



wwPDB X-ray Structure Validation Summary Report

Feb 27, 2014 – 07:16 AM GMT

PDB ID : 3Q3B
Title : 6-Amino-4-(pyrimidin-4-yl)pyridones:Novel Glycogen Synthase Kinase-3 Inhibitors
Authors : Pandit, J
Deposited on : 2010-12-21
Resolution : 2.70 Å(reported)

This is a wwPDB validation summary report for a publicly released PDB entry.

We welcome your comments at validation@mail.wwpdb.org

A user guide is available at <http://wwpdb.org/ValidationPDFNotes.html>

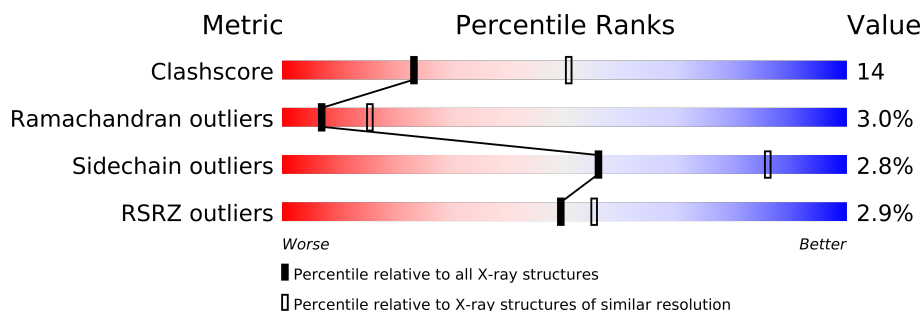
The following versions of software and data (see [references](#)) were used in the production of this report:

MolProbity	:	4.02b-467
Mogul	:	1.15 2013
Xtriage (Phenix)	:	dev-1323
EDS	:	stable22639
Percentile statistics	:	21963
Refmac	:	5.8.0049
CCP4	:	6.3.0 (Settle)
Ideal geometry (proteins)	:	Engh & Huber (2001)
Ideal geometry (DNA, RNA)	:	Parkinson et. al. (1996)
Validation Pipeline (wwPDB-VP)	:	stable22683

1 Overall quality at a glance

The reported resolution of this entry is 2.70 Å.

Percentile scores (ranging between 0-100) for global validation metrics of the entry are shown in the following graphic. The table shows the number of entries on which the scores are based.



Metric	Whole archive (#Entries)	Similar resolution (#Entries, resolution range(Å))
Clashscore	79885	1939 (2.70-2.70)
Ramachandran outliers	78287	1905 (2.70-2.70)
Sidechain outliers	78261	1905 (2.70-2.70)
RSRZ outliers	66119	1559 (2.70-2.70)

The table below summarises the geometric issues observed across the polymeric chains and their fit to the electron density. The red, orange, yellow and green segments on the lower bar indicate the fraction of residues that contain outliers for ≥ 3 , 2, 1 and 0 types of geometric quality criteria. The upper red bar (where present) indicates the fraction of residues that have poor fit to the electron density.

Mol	Chain	Length	Quality of chain
1	A	424	
1	B	424	

The following table lists non-polymeric compounds that are outliers for geometric or electron-density-fit criteria:

Mol	Type	Chain	Res	Geometry	Electron density
2	55E	B	421	-	X

2 Entry composition

There are 3 unique types of molecules in this entry. The entry contains 5521 atoms, of which 0 are hydrogen and 0 are deuterium.

In the tables below, the ZeroOcc column contains the number of atoms modelled with zero occupancy, the AltConf column contains the number of residues with at least one atom in alternate conformation and the Trace column contains the number of residues modelled with at most 2 atoms.

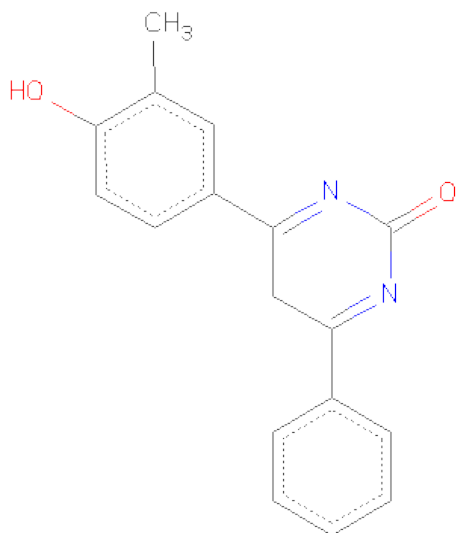
- Molecule 1 is a protein called Glycogen synthase kinase-3 beta.

Mol	Chain	Residues	Atoms					ZeroOcc	AltConf	Trace
1	A	344	Total	C	N	O	S	0	0	0
			2730	1756	470	493	11			
1	B	341	Total	C	N	O	S	0	0	0
			2708	1742	465	490	11			

There are 10 discrepancies between the modelled and reference sequences:

Chain	Residue	Modelled	Actual	Comment	Reference
A	-3	GLY	-	EXPRESSION TAG	UNP P49841
A	-2	PRO	-	EXPRESSION TAG	UNP P49841
A	-1	LEU	-	EXPRESSION TAG	UNP P49841
A	0	GLY	-	EXPRESSION TAG	UNP P49841
A	1	SER	-	EXPRESSION TAG	UNP P49841
B	-3	GLY	-	EXPRESSION TAG	UNP P49841
B	-2	PRO	-	EXPRESSION TAG	UNP P49841
B	-1	LEU	-	EXPRESSION TAG	UNP P49841
B	0	GLY	-	EXPRESSION TAG	UNP P49841
B	1	SER	-	EXPRESSION TAG	UNP P49841

- Molecule 2 is 4-(4-HYDROXY-3-METHYLPHENYL)-6-PHENYLPYRIMIDIN-2(5H)-ONE (three-letter code: 55E) (formula: C₁₇H₁₄N₂O₂).



Mol	Chain	Residues	Atoms				ZeroOcc	AltConf
2	A	1	Total	C	N	O	0	0
			21	17	2	2		
2	B	1	Total	C	N	O	0	0
			21	17	2	2		

- Molecule 3 is water.

Mol	Chain	Residues	Atoms		ZeroOcc	AltConf
3	A	16	Total	O	0	0
			16	16		
3	B	25	Total	O	0	0
			25	25		

4 Data and refinement statistics

Property	Value	Source
Space group	P 21 21 21	Depositor
Cell constants a, b, c, α , β , γ	83.45Å 85.65Å 178.80Å 90.00° 90.00° 90.00°	Depositor
Resolution (Å)	30.00 – 2.70 29.89 – 2.70	Depositor EDS
% Data completeness (in resolution range)	(Not available) (30.00-2.70) 88.9 (29.89-2.70)	Depositor EDS
R_{merge}	0.10	Depositor
R_{sym}	(Not available)	Depositor
$\langle I/\sigma(I) \rangle$ ¹	1.88 (at 2.68Å)	Xtriage
Refinement program	CNX 2000	Depositor
R, R_{free}	0.228 , 0.259 0.219 , (Not available)	Depositor DCC
R_{free} test set	No test flags present.	DCC
Wilson B-factor (Å ²)	45.3	Xtriage
Anisotropy	0.571	Xtriage
Bulk solvent k_{sol} (e/Å ³), B_{sol} (Å ²)	0.30 , 27.9	EDS
Estimated twinning fraction	0.017 for k,h,-l	Xtriage
L-test for twinning	$\langle L \rangle = 0.50$, $\langle L^2 \rangle = 0.33$	Xtriage
Outliers	0 of 35231 reflections	Xtriage
F_o, F_c correlation	0.93	EDS
Total number of atoms	5521	wwPDB-VP
Average B, all atoms (Å ²)	55.0	wwPDB-VP

Xtriage's analysis on translational NCS is as follows: *The largest off-origin peak in the Patterson function is 3.41% of the height of the origin peak. No significant pseudotranslation is detected.*

¹Intensities estimated from amplitudes.

5 Model quality

5.1 Standard geometry

Bond lengths and bond angles in the following residue types are not validated in this section: 55E

The Z score for a bond length (or angle) is the number of standard deviations the observed value is removed from the expected value. A bond length (or angle) with $|Z| > 5$ is considered an outlier worth inspection. RMSZ is the root-mean-square of all Z scores of the bond lengths (or angles).

Mol	Chain	Bond lengths		Bond angles	
		RMSZ	$\# Z > 5$	RMSZ	$\# Z > 5$
1	A	0.51	0/2797	0.73	1/3806 (0.0%)
1	B	0.55	0/2775	0.76	0/3776
All	All	0.53	0/5572	0.74	1/7582 (0.0%)

There are no bond length outliers.

All (1) bond angle outliers are listed below:

Mol	Chain	Res	Type	Atoms	Z	Observed(°)	Ideal(°)
1	A	190	ASP	N-CA-C	-5.01	97.48	111.00

There are no chirality outliers.

There are no planarity outliers.

5.2 Close contacts

In the following table, the Non-H and H(model) columns list the number of non-hydrogen atoms and hydrogen atoms in the chain respectively. The H(added) column lists the number of hydrogens added by MolProbity. The Clashes column lists the number of clashes within the asymmetric unit, and the number in parentheses is this value normalized per 1000 atoms of the molecule in the chain. The Symm-Clashes column gives symmetry related clashes, in the same way as for the Clashes column.

Mol	Chain	Non-H	H(model)	H(added)	Clashes	Symm-Clashes
1	A	2730	0	2752	80	0
1	B	2708	0	2726	82	0
2	A	21	0	14	0	0
2	B	21	0	13	0	0
3	A	16	0	0	0	0
3	B	25	0	0	0	0

Continued on next page...

Continued from previous page...

Mol	Chain	Non-H	H(model)	H(added)	Clashes	Symm-Clashes
All	All	5521	0	5505	159	0

Clashscore is defined as the number of clashes calculated for the entry per 1000 atoms (including hydrogens) of the entry. The overall clashscore for this entry is 14.

The worst 5 of 159 close contacts within the same asymmetric unit are listed below.

Atom-1	Atom-2	Distance(Å)	Clash(Å)
1:A:385:GLN:HG3	1:A:386:ALA:H	1.17	1.06
1:B:285:ASN:HB3	1:B:286:PRO:HD3	1.38	1.02
1:A:220:ARG:HD2	1:A:221:TYR:H	1.24	1.01
1:A:220:ARG:CD	1:A:221:TYR:H	1.74	0.99
1:A:307:PRO:O	1:A:308:ARG:HB2	1.69	0.92

There are no symmetry-related clashes.

5.3 Torsion angles

5.3.1 Protein backbone ⓘ

In the following table, the Percentiles column shows the percent Ramachandran outliers of the chain as a percentile score with respect to all X-ray entries followed by that with respect to entries of similar resolution. The Analysed column shows the number of residues for which the backbone conformation was analysed, and the total number of residues.

Mol	Chain	Analysed	Favoured	Allowed	Outliers	Percentiles	
1	A	338/424 (80%)	310 (92%)	17 (5%)	11 (3%)	6	13
1	B	335/424 (79%)	314 (94%)	12 (4%)	9 (3%)	8	19
All	All	673/848 (79%)	624 (93%)	29 (4%)	20 (3%)	7	15

5 of 20 Ramachandran outliers are listed below:

Mol	Chain	Res	Type
1	A	220	ARG
1	A	285	ASN
1	B	77	ASP
1	B	149	ALA
1	B	220	ARG

5.3.2 Protein sidechains ⓘ

In the following table, the Percentiles column shows the percent sidechain outliers of the chain as a percentile score with respect to all X-ray entries followed by that with respect to entries of similar resolution. The Analysed column shows the number of residues for which the sidechain conformation was analysed, and the total number of residues.

Mol	Chain	Analysed	Rotameric	Outliers	Percentiles	
1	A	302/366 (82%)	294 (97%)	8 (3%)	59	88
1	B	300/366 (82%)	291 (97%)	9 (3%)	53	84
All	All	602/732 (82%)	585 (97%)	17 (3%)	56	86

5 of 17 residues with a non-rotameric sidechain are listed below:

Mol	Chain	Res	Type
1	A	370	ASN
1	B	66	SER
1	B	293	PHE
1	A	287	ASN
1	B	295	GLN

Some sidechains can be flipped to improve hydrogen bonding and reduce clashes. 5 of 16 such sidechains are listed below:

Mol	Chain	Res	Type
1	A	299	HIS
1	A	365	GLN
1	B	145	HIS
1	A	285	ASN
1	B	285	ASN

5.3.3 RNA ⓘ

There are no RNA chains in this entry.

5.4 Non-standard residues in protein, DNA, RNA chains ⓘ

There are no non-standard protein/DNA/RNA residues in this entry.

5.5 Carbohydrates ⓘ

There are no carbohydrates in this entry.

5.6 Ligand geometry ⓘ

2 ligands are modelled in this entry.

In the following table, the Counts columns list the number of bonds (or angles) for which Mogul statistics could be retrieved, the number of bonds (or angles) that are observed in the model and the number of bonds (or angles) that are defined in the chemical component dictionary. The Link column lists molecule types, if any, to which the group is linked. The Z score for a bond length (or angle) is the number of standard deviations the observed value is removed from the expected value. A bond length (or angle) with $|Z| > 2$ is considered an outlier worth inspection. RMSZ is the root-mean-square of all Z scores of the bond lengths (or angles).

Mol	Type	Chain	Res	Link	Bond lengths			Bond angles		
					Counts	RMSZ	# $ Z > 2$	Counts	RMSZ	# $ Z > 2$
2	55E	A	421	-	23,23,23	2.72	8 (34%)	32,32,32	1.21	5 (15%)
2	55E	B	421	-	23,23,23	2.98	11 (47%)	32,32,32	1.23	5 (15%)

In the following table, the Chirals column lists the number of chiral outliers, the number of chiral centers analysed, the number of these observed in the model and the number defined in the chemical component dictionary. Similar counts are reported in the Torsion and Rings columns. '-' means no outliers of that kind were identified.

Mol	Type	Chain	Res	Link	Chirals	Torsions	Rings
2	55E	A	421	-	-	0/8/20/20	0/2/3/3
2	55E	B	421	-	-	0/8/20/20	0/2/3/3

The worst 5 of 19 bond length outliers are listed below:

Mol	Chain	Res	Type	Atoms	Z	Observed(Å)	Ideal(Å)
2	B	421	55E	C8-N1	8.64	1.51	1.31
2	A	421	55E	C8-N1	8.02	1.50	1.31
2	B	421	55E	C2-N4	6.75	1.48	1.38
2	A	421	55E	C2-N4	5.64	1.47	1.38
2	A	421	55E	C7-C8	-3.58	1.38	1.50

The worst 5 of 10 bond angle outliers are listed below:

Mol	Chain	Res	Type	Atoms	Z	Observed(°)	Ideal(°)
2	B	421	55E	C7-C8-C9	3.00	123.38	120.11
2	B	421	55E	N1-C2-N4	-2.60	117.51	122.70
2	A	421	55E	C7-C8-C9	2.50	122.84	120.11
2	B	421	55E	O18-C17-C19	2.49	122.01	117.54
2	A	421	55E	C21-C19-C17	2.47	119.32	117.55

There are no chirality outliers.

There are no torsion outliers.

There are no ring outliers.

5.7 Other polymers ⓘ

There are no such residues in this entry.

5.8 Polymer linkage issues

There are no chain breaks in this entry.

6 Fit of model and data

6.1 Protein, DNA and RNA chains

In the following table, the column labelled ‘#RSRZ> 2’ contains the number (and percentage) of RSRZ outliers, followed by percent RSRZ outliers for the chain as percentile scores relative to all X-ray entries and entries of similar resolution. The OWAB column contains the minimum, median, 95th percentile and maximum values of the occupancy-weighted average B-factor per residue. The column labelled ‘Q< 0.9’ lists the number of (and percentage) of residues with an average occupancy less than 0.9.

Mol	Chain	Analysed	<RSRZ>	#RSRZ>2	OWAB(Å ²)	Q<0.9
1	A	344/424 (81%)	-0.19	11 (3%) 45 50	26, 51, 111, 164	0
1	B	341/424 (80%)	-0.21	9 (2%) 53 59	25, 45, 99, 156	0
All	All	685/848 (80%)	-0.20	20 (2%) 49 55	25, 47, 107, 164	0

The worst 5 of 20 RSRZ outliers are listed below:

Mol	Chain	Res	Type	RSRZ
1	A	386	ALA	4.2
1	B	208	VAL	3.6
1	B	120	GLY	3.2
1	B	285	ASN	3.0
1	A	296	ILE	2.7

6.2 Non-standard residues in protein, DNA, RNA chains

There are no non-standard protein/DNA/RNA residues in this entry.

6.3 Carbohydrates

There are no carbohydrates in this entry.

6.4 Ligands

In the following table, the Atoms column lists the number of modelled atoms in the group and the number defined in the chemical component dictionary. LLDF column lists the quality of electron density of the group with respect to its neighbouring residues in protein, DNA or RNA chains. The B-factors column lists the minimum, median, 95th percentile and maximum values of B factors of atoms in the group. The column labelled ‘Q< 0.9’ lists the number of atoms with occupancy less than 0.9.

Mol	Type	Chain	Res	Atoms	RSR	LLDF	B-factors(\AA^2)	Q<0.9
2	55E	B	421	21/21	0.22	6.13	45,45,45,45	0
2	55E	A	421	21/21	0.18	1.13	48,48,48,48	0

6.5 Other polymers ⓘ

There are no such residues in this entry.