



wwPDB X-ray Structure Validation Summary Report i

Oct 29, 2014 – 06:49 PM EDT

PDB ID : 4Q4X
Title : Crystal structure of Cocksackievirus A24v soaked with 6'-Sialyllactose (6SL)
Authors : Zocher, G.; Stehle, T.
Deposited on : 2014-04-15
Resolution : 1.65 Å(reported)

This is a wwPDB validation summary report for a publicly released PDB entry.

We welcome your comments at validation@mail.wwpdb.org

A user guide is available at <http://wwpdb.org/ValidationPDFNotes.html>

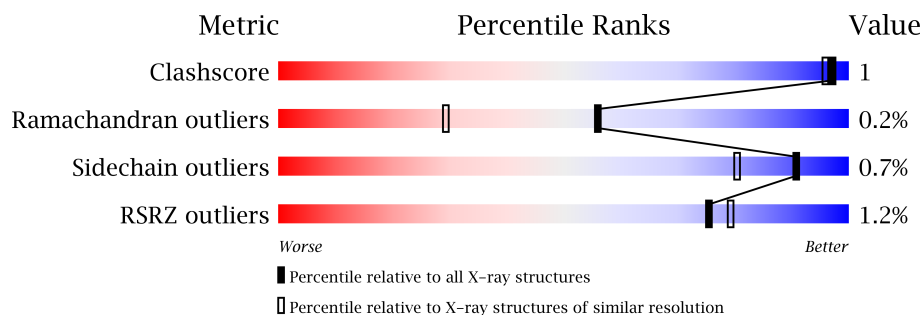
The following versions of software and data (see [references](#)) were used in the production of this report:

MolProbity : 4.02b-467
Mogul : 1.16 November 2013
Xtriage (Phenix) : dev-1439
EDS : stable24103
Percentile statistics : 21963
Refmac : 5.8.0049
CCP4 : 6.1.3
Ideal geometry (proteins) : Engh & Huber (2001)
Ideal geometry (DNA, RNA) : Parkinson et. al. (1996)
Validation Pipeline (wwPDB-VP) : stable24103

1 Overall quality at a glance

The reported resolution of this entry is 1.65 Å.

Percentile scores (ranging between 0-100) for global validation metrics of the entry are shown in the following graphic. The table shows the number of entries on which the scores are based.



Metric	Whole archive (#Entries)	Similar resolution (#Entries, resolution range(Å))
Clashscore	79885	1001 (1.66-1.66)
Ramachandran outliers	78287	1581 (1.68-1.64)
Sidechain outliers	78261	1580 (1.68-1.64)
RSRZ outliers	66119	1404 (1.68-1.64)

The table below summarises the geometric issues observed across the polymeric chains and their fit to the electron density. The red, orange, yellow and green segments on the lower bar indicate the fraction of residues that contain outliers for ≥ 3 , 2, 1 and 0 types of geometric quality criteria. The upper red bar (where present) indicates the fraction of residues that have poor fit to the electron density.

Mol	Chain	Length	Quality of chain
1	1	305	
2	2	271	
3	3	240	
4	4	69	

The following table lists non-polymeric compounds that are outliers for geometric or electron-density-fit criteria:

Mol	Type	Chain	Res	Geometry	Electron density
6	HEZ	1	5002	-	X
6	HEZ	1	5003	-	X
7	NA	1	5004	-	X

2 Entry composition

There are 10 unique types of molecules in this entry. The entry contains 7443 atoms, of which 0 are hydrogen and 0 are deuterium.

In the tables below, the ZeroOcc column contains the number of atoms modelled with zero occupancy, the AltConf column contains the number of residues with at least one atom in alternate conformation and the Trace column contains the number of residues modelled with at most 2 atoms.

- Molecule 1 is a protein called Cocksackievirus capsid protein VP1.

Mol	Chain	Residues	Atoms					ZeroOcc	AltConf	Trace
1	1	281	Total	C	N	O	S	0	8	0
			2281	1454	382	437	8			

- Molecule 2 is a protein called Cocksackievirus capsid protein VP2.

Mol	Chain	Residues	Atoms					ZeroOcc	AltConf	Trace
2	2	264	Total	C	N	O	S	0	5	0
			2072	1323	342	393	14			

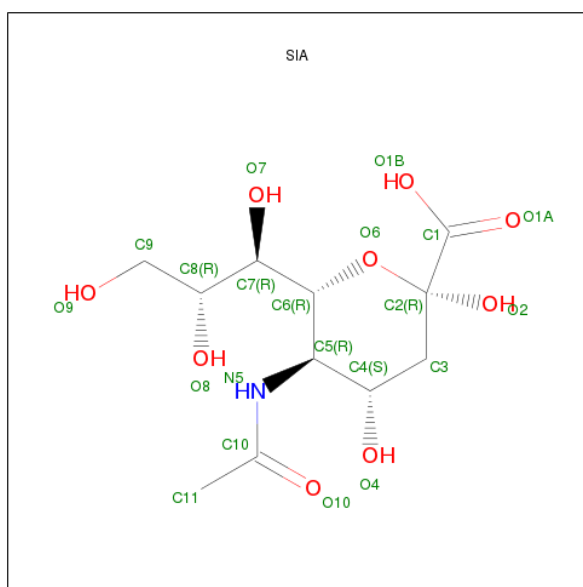
- Molecule 3 is a protein called Cocksackievirus capsid protein VP3.

Mol	Chain	Residues	Atoms					ZeroOcc	AltConf	Trace
3	3	234	Total	C	N	O	S	0	9	0
			1844	1184	291	347	22			

- Molecule 4 is a protein called Cocksackievirus capsid protein VP4.

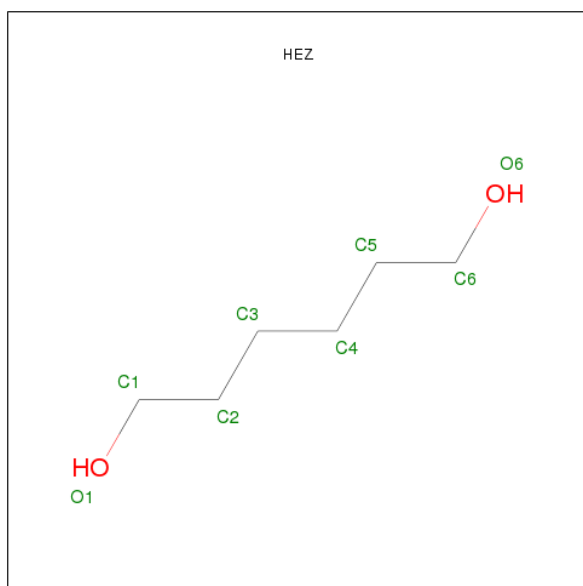
Mol	Chain	Residues	Atoms					ZeroOcc	AltConf	Trace
4	4	56	Total	C	N	O	S	0	1	0
			416	261	67	87	1			

- Molecule 5 is SUGAR (O-SIALIC ACID) (three-letter code: SIA) (formula: C₁₁H₁₉NO₉).



Mol	Chain	Residues	Atoms			ZeroOcc	AltConf
5	1	1	Total	C	N	O	0
			21	11	1	9	

- Molecule 6 is HEXANE-1,6-DIOL (three-letter code: HEZ) (formula: $C_6H_{14}O_2$).



Mol	Chain	Residues	Atoms			ZeroOcc	AltConf
6	1	1	Total	C	O	0	0
			8	6	2		
6	1	1	Total	C	O	0	0
			8	6	2		

- Molecule 7 is SODIUM ION (three-letter code: NA) (formula: Na).

Mol	Chain	Residues	Atoms	ZeroOcc	AltConf
7	1	1	Total Na 1 1	0	0

- Molecule 8 is CALCIUM ION (three-letter code: CA) (formula: Ca).

Mol	Chain	Residues	Atoms	ZeroOcc	AltConf
8	2	1	Total Ca 1 1	0	0
8	1	3	Total Ca 3 3	0	0
8	3	1	Total Ca 1 1	0	0

- Molecule 9 is CHLORIDE ION (three-letter code: CL) (formula: Cl).

Mol	Chain	Residues	Atoms	ZeroOcc	AltConf
9	2	1	Total Cl 1 1	0	0
9	1	3	Total Cl 3 3	0	0
9	3	1	Total Cl 1 1	0	0

- Molecule 10 is water.

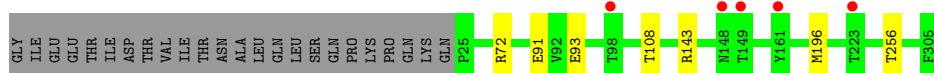
Mol	Chain	Residues	Atoms	ZeroOcc	AltConf
10	1	275	Total O 275 275	0	0
10	2	226	Total O 226 226	0	0
10	3	222	Total O 222 222	0	0
10	4	59	Total O 59 59	0	0

3 Residue-property plots

These plots are drawn for all protein, RNA and DNA chains in the entry. The first graphic for a chain summarises the proportions of errors displayed in the second graphic. The second graphic shows the sequence view annotated by issues in geometry and electron density. Residues are color-coded according to the number of geometric quality criteria for which they contain at least one outlier: green = 0, yellow = 1, orange = 2 and red = 3 or more. A red dot above a residue indicates a poor fit to the electron density ($RSRZ > 2$). Stretches of 2 or more consecutive residues without any outlier are shown as a green connector. Residues present in the sample, but not in the model, are shown in grey.

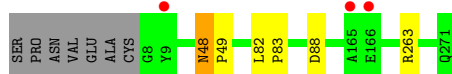
- Molecule 1: Cocksackievirus capsid protein VP1

Chain 1: 



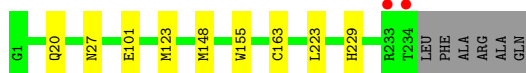
- Molecule 2: Cocksackievirus capsid protein VP2

Chain 2: 



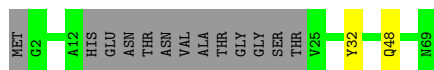
- Molecule 3: Cocksackievirus capsid protein VP3

Chain 3: 



- Molecule 4: Cocksackievirus capsid protein VP4

Chain 4: 



4 Data and refinement statistics

Property	Value	Source
Space group	I 2 2 2	Depositor
Cell constants a, b, c, α , β , γ	306.40Å 366.10Å 367.70Å 90.00° 90.00° 90.00°	Depositor
Resolution (Å)	49.95 – 1.65 49.95 – 1.65	Depositor EDS
% Data completeness (in resolution range)	99.2 (49.95-1.65) 99.2 (49.95-1.65)	Depositor EDS
R_{merge}	(Not available)	Depositor
R_{sym}	(Not available)	Depositor
$\langle I/\sigma(I) \rangle$ ¹	1.26 (at 1.65Å)	Xtriage
Refinement program	REFMAC 5.8.0049	Depositor
R, R_{free}	0.149 , (Not available) 0.168 , (Not available)	Depositor DCC
R_{free} test set	No test flags present.	DCC
Wilson B-factor (Å ²)	14.9	Xtriage
Anisotropy	0.121	Xtriage
Bulk solvent k_{sol} (e/Å ³), B_{sol} (Å ²)	0.38 , 42.8	EDS
Estimated twinning fraction	0.006 for -h,-l,-k	Xtriage
L-test for twinning	$\langle L \rangle = 0.49$, $\langle L^2 \rangle = 0.33$	Xtriage
Outliers	9 of 2413464 reflections (0.000%)	Xtriage
F_o, F_c correlation	0.96	EDS
Total number of atoms	7443	wwPDB-VP
Average B, all atoms (Å ²)	24.0	wwPDB-VP

Xtriage's analysis on translational NCS is as follows: *The largest off-origin peak in the Patterson function is 1.48% of the height of the origin peak. No significant pseudotranslation is detected.*

¹Intensities estimated from amplitudes.

5 Model quality ⓘ

5.1 Standard geometry ⓘ

Bond lengths and bond angles in the following residue types are not validated in this section: NA, CA, SIA, HEZ, CL

The Z score for a bond length (or angle) is the number of standard deviations the observed value is removed from the expected value. A bond length (or angle) with $|Z| > 5$ is considered an outlier worth inspection. RMSZ is the root-mean-square of all Z scores of the bond lengths (or angles).

Mol	Chain	Bond lengths		Bond angles	
		RMSZ	$\# Z > 5$	RMSZ	$\# Z > 5$
1	1	0.33	0/2369	0.57	0/3236
2	2	0.28	0/2143	0.58	0/2927
3	3	0.29	0/1921	0.57	0/2617
4	4	0.34	0/425	0.49	0/575
All	All	0.30	0/6858	0.57	0/9355

Chiral center outliers are detected by calculating the chiral volume of a chiral center and verifying if the center is modelled as a planar moiety or with the opposite hand. A planarity outlier is detected by checking planarity of atoms in a peptide group, atoms in a mainchain group or atoms of a sidechain that are expected to be planar.

Mol	Chain	#Chirality outliers	#Planarity outliers
2	2	0	2

There are no bond length outliers.

There are no bond angle outliers.

There are no chirality outliers.

All (2) planarity outliers are listed below:

Mol	Chain	Res	Type	Group
2	2	82	LEU	Mainchain,Peptide

5.2 Close contacts ⓘ

In the following table, the Non-H and H(model) columns list the number of non-hydrogen atoms and hydrogen atoms in the chain respectively. The H(added) column lists the number of hydrogens added by MolProbity. The Clashes column lists the number of clashes within the asymmetric unit, and the number in parentheses is this value normalized per 1000 atoms of the molecule in the chain. The Symm-Clashes column gives symmetry related clashes, in the same way as for the

Clashes column.

Mol	Chain	Non-H	H(model)	H(added)	Clashes	Symm-Clashes
1	1	2281	0	2214	5	0
2	2	2072	0	2000	2	0
3	3	1844	0	1843	5	0
4	4	416	0	396	2	0
5	1	21	0	18	0	0
6	1	16	0	28	0	0
7	1	1	0	0	0	0
8	1	3	0	0	0	0
8	2	1	0	0	0	0
8	3	1	0	0	0	0
9	1	3	0	0	0	0
9	2	1	0	0	1	0
9	3	1	0	0	0	0
10	1	275	0	0	1	0
10	2	226	0	0	1	0
10	3	222	0	0	0	0
10	4	59	0	0	0	0
All	All	7443	0	6499	12	0

Clashscore is defined as the number of clashes calculated for the entry per 1000 atoms (including hydrogens) of the entry. The overall clashscore for this entry is 1.

The worst 5 of 12 close contacts within the same asymmetric unit are listed below.

Atom-1	Atom-2	Distance(Å)	Clash(Å)
3:3:20:GLN:HE22	4:4:32:TYR:H	1.34	0.76
1:1:91:GLU:O	1:1:108[B]:THR:HG21	1.98	0.64
3:3:101:GLU:OE1	3:3:229:HIS:HD2	1.82	0.62
1:1:256[B]:THR:HG22	10:1:6252:HOH:O	2.00	0.61
1:1:72:ARG:HH11	4:4:48:GLN:HE22	1.52	0.58

There are no symmetry-related clashes.

5.3 Torsion angles

5.3.1 Protein backbone ⓘ

In the following table, the Percentiles column shows the percent Ramachandran outliers of the chain as a percentile score with respect to all X-ray entries followed by that with respect to entries of similar resolution.

The Analysed column shows the number of residues for which the backbone conformation was

analysed, and the total number of residues.

Mol	Chain	Analysed	Favoured	Allowed	Outliers	Percentiles	
1	1	287/305 (94%)	280 (98%)	7 (2%)	0	100	100
2	2	267/271 (98%)	254 (95%)	11 (4%)	2 (1%)	30	8
3	3	241/240 (100%)	230 (95%)	11 (5%)	0	100	100
4	4	53/69 (77%)	51 (96%)	2 (4%)	0	100	100
All	All	848/885 (96%)	815 (96%)	31 (4%)	2 (0%)	56	29

All (2) Ramachandran outliers are listed below:

Mol	Chain	Res	Type
2	2	48	ASN
2	2	83	PRO

5.3.2 Protein sidechains ⓘ

In the following table, the Percentiles column shows the percent sidechain outliers of the chain as a percentile score with respect to all X-ray entries followed by that with respect to entries of similar resolution. The Analysed column shows the number of residues for which the sidechain conformation was analysed, and the total number of residues.

Mol	Chain	Analysed	Rotameric	Outliers	Percentiles	
1	1	254/268 (95%)	252 (99%)	2 (1%)	89	78
2	2	223/225 (99%)	222 (100%)	1 (0%)	95	91
3	3	216/212 (102%)	214 (99%)	2 (1%)	87	74
4	4	44/57 (77%)	44 (100%)	0	100	100
All	All	737/762 (97%)	732 (99%)	5 (1%)	91	80

All (5) residues with a non-rotameric sidechain are listed below:

Mol	Chain	Res	Type
1	1	143	ARG
1	1	196	MET
2	2	263	ARG
3	3	148	MET
3	3	223	LEU

Some sidechains can be flipped to improve hydrogen bonding and reduce clashes. 5 of 6 such sidechains are listed below:

Mol	Chain	Res	Type
2	2	225	ASN
4	4	48	GLN
3	3	20	GLN
2	2	61	ASN
3	3	229	HIS

5.3.3 RNA ⓘ

There are no RNA chains in this entry.

5.4 Non-standard residues in protein, DNA, RNA chains ⓘ

There are no non-standard protein/DNA/RNA residues in this entry.

5.5 Carbohydrates ⓘ

There are no carbohydrates in this entry.

5.6 Ligand geometry ⓘ

Of 14 ligands modelled in this entry, 11 are monoatomic - leaving 3 for Mogul analysis.

In the following table, the Counts columns list the number of bonds (or angles) for which Mogul statistics could be retrieved, the number of bonds (or angles) that are observed in the model and the number of bonds (or angles) that are defined in the chemical component dictionary. The Link column lists molecule types, if any, to which the group is linked. The Z score for a bond length (or angle) is the number of standard deviations the observed value is removed from the expected value. A bond length (or angle) with $|Z| > 2$ is considered an outlier worth inspection. RMSZ is the root-mean-square of all Z scores of the bond lengths (or angles).

Mol	Type	Chain	Res	Link	Bond lengths			Bond angles		
					Counts	RMSZ	$\# Z > 2$	Counts	RMSZ	$\# Z > 2$
5	SIA	1	5001	-	21,21,21	0.95	1 (4%)	31,31,31	1.08	3 (9%)
6	HEZ	1	5002	-	7,7,7	0.23	0	6,6,6	0.60	0
6	HEZ	1	5003	-	7,7,7	0.27	0	6,6,6	0.51	0

In the following table, the Chirals column lists the number of chiral outliers, the number of chiral centers analysed, the number of these observed in the model and the number defined in the chemical component dictionary. Similar counts are reported in the Torsion and Rings columns. '-' means no outliers of that kind were identified.

Mol	Type	Chain	Res	Link	Chirals	Torsions	Rings
5	SIA	1	5001	-	-	0/20/38/38	0/1/1/1
6	HEZ	1	5002	-	-	0/5/5/5	0/0/0/0
6	HEZ	1	5003	-	-	0/5/5/5	0/0/0/0

All (1) bond length outliers are listed below:

Mol	Chain	Res	Type	Atoms	Z	Observed(Å)	Ideal(Å)
5	1	5001	SIA	O2-C2	3.00	1.43	1.39

All (3) bond angle outliers are listed below:

Mol	Chain	Res	Type	Atoms	Z	Observed(°)	Ideal(°)
5	1	5001	SIA	O1A-C1-C2	-2.78	119.61	123.48
5	1	5001	SIA	O6-C2-C3	2.18	111.50	110.22
5	1	5001	SIA	C2-O6-C6	2.14	117.31	113.91

There are no chirality outliers.

There are no torsion outliers.

There are no ring outliers.

5.7 Other polymers ⓘ

There are no such residues in this entry.

5.8 Polymer linkage issues

There are no chain breaks in this entry.

6 Fit of model and data ⓘ

6.1 Protein, DNA and RNA chains ⓘ

In the following table, the column labelled ‘#RSRZ> 2’ contains the number (and percentage) of RSRZ outliers, followed by percent RSRZ outliers for the chain as percentile scores relative to all X-ray entries and entries of similar resolution. The OWAB column contains the minimum, median, 95th percentile and maximum values of the occupancy-weighted average B-factor per residue. The column labelled ‘Q< 0.9’ lists the number of (and percentage) of residues with an average occupancy less than 0.9.

Mol	Chain	Analysed	<RSRZ>	#RSRZ>2	OWAB(Å ²)	Q<0.9
1	1	281/305 (92%)	-0.33	5 (1%) 65 67	20, 23, 37, 54	0
2	2	264/271 (97%)	-0.45	3 (1%) 77 81	19, 21, 33, 57	0
3	3	234/240 (97%)	-0.49	2 (0%) 81 85	19, 21, 29, 58	0
4	4	56/69 (81%)	-0.02	0 100 100	20, 28, 37, 51	0
All	All	835/885 (94%)	-0.39	10 (1%) 75 79	19, 22, 35, 58	0

The worst 5 of 10 RSRZ outliers are listed below:

Mol	Chain	Res	Type	RSRZ
3	3	234	THR	6.3
2	2	9	TYR	4.8
1	1	148	ASN	4.2
1	1	98	THR	3.1
1	1	223	THR	3.0

6.2 Non-standard residues in protein, DNA, RNA chains ⓘ

There are no non-standard protein/DNA/RNA residues in this entry.

6.3 Carbohydrates ⓘ

There are no carbohydrates in this entry.

6.4 Ligands ⓘ

In the following table, the Atoms column lists the number of modelled atoms in the group and the number defined in the chemical component dictionary. LLDF column lists the quality of electron density of the group with respect to its neighbouring residues in protein, DNA or RNA chains. The B-factors column lists the minimum, median, 95th percentile and maximum values of B factors

of atoms in the group. The column labelled 'Q< 0.9' lists the number of atoms with occupancy less than 0.9.

Mol	Type	Chain	Res	Atoms	RSR	LLDF	B-factors(\AA^2)	Q<0.9
6	HEZ	1	5003	8/8	0.23	19.70	54,59,64,71	0
6	HEZ	1	5002	8/8	0.19	15.58	38,39,49,53	0
7	NA	1	5004	1/1	0.19	4.44	27,27,27,27	0
9	CL	2	402	1/1	0.09	1.56	36,36,36,36	0
5	SIA	1	5001	21/21	0.32	1.49	33,45,53,65	0
8	CA	1	5007	1/1	0.10	1.13	25,25,25,25	0
8	CA	3	601	1/1	0.09	1.07	43,43,43,43	1
9	CL	3	602	1/1	0.09	0.75	38,38,38,38	0
9	CL	1	5010	1/1	0.12	0.25	50,50,50,50	0
8	CA	2	401	1/1	0.07	-0.39	27,27,27,27	1
8	CA	1	5005	1/1	0.04	-1.35	23,23,23,23	0
8	CA	1	5006	1/1	0.04	-1.49	27,27,27,27	0
9	CL	1	5009	1/1	0.03	-4.29	27,27,27,27	0
9	CL	1	5008	1/1	0.03	-5.02	24,24,24,24	0

6.5 Other polymers ⓘ

There are no such residues in this entry.