



# Full wwPDB X-ray Structure Validation Report

Feb 26, 2014 – 03:31 PM GMT

PDB ID : 2Q7T  
Title : Crystal Structure of the F plasmid TraI Relaxase Domain with the Scissile Thymidine Base  
Authors : Lujan, S.A.; Redinbo, M.R.  
Deposited on : 2007-06-07  
Resolution : 2.42 Å(reported)

This is a full wwPDB validation report for a publicly released PDB entry.  
We welcome your comments at [validation@mail.wwpdb.org](mailto:validation@mail.wwpdb.org)  
A user guide is available at <http://wwpdb.org/ValidationPDFNotes.html>

---

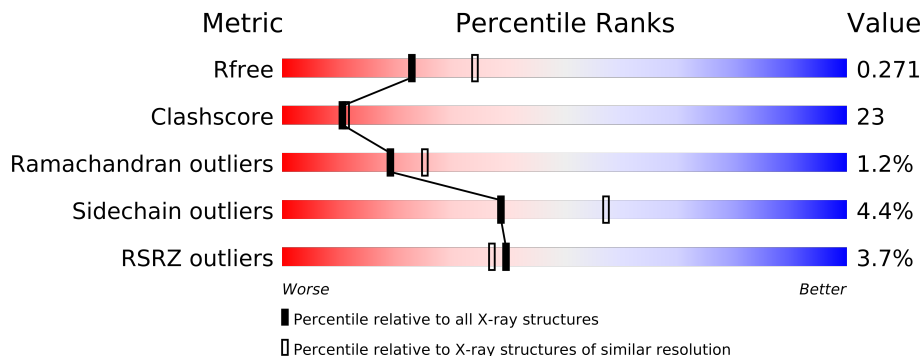
The following versions of software and data (see [references](#)) were used in the production of this report:

MolProbity : 4.02b-467  
Mogul : 1.15 2013  
Xtriage (Phenix) : dev-1323  
EDS : stable22639  
Percentile statistics : 21963  
Refmac : 5.8.0049  
CCP4 : 6.3.0 (Settle)  
Ideal geometry (proteins) : Engh & Huber (2001)  
Ideal geometry (DNA, RNA) : Parkinson et. al. (1996)  
Validation Pipeline (wwPDB-VP) : stable22683

# 1 Overall quality at a glance

The reported resolution of this entry is 2.42 Å.

Percentile scores (ranging between 0-100) for global validation metrics of the entry are shown in the following graphic. The table shows the number of entries on which the scores are based.



Metric	Whole archive (#Entries)	Similar resolution (#Entries, resolution range(Å))
$R_{free}$	66092	2496 (2.44-2.40)
Clashscore	79885	3124 (2.44-2.40)
Ramachandran outliers	78287	3067 (2.44-2.40)
Sidechain outliers	78261	3068 (2.44-2.40)
RSRZ outliers	66119	2499 (2.44-2.40)

The table below summarises the geometric issues observed across the polymeric chains and their fit to the electron density. The red, orange, yellow and green segments on the lower bar indicate the fraction of residues that contain outliers for  $\geq 3$ , 2, 1 and 0 types of geometric quality criteria. The upper red bar (where present) indicates the fraction of residues that have poor fit to the electron density.

Mol	Chain	Length	Quality of chain
1	A	301	
1	B	301	

The following table lists non-polymeric compounds that are outliers for geometric or electron-density-fit criteria:

Mol	Type	Chain	Res	Geometry	Electron density
2	MG	A	5001	-	X
2	MG	B	5002	-	X
3	TMP	B	2001	-	X

## 2 Entry composition

There are 4 unique types of molecules in this entry. The entry contains 4321 atoms, of which 0 are hydrogen and 0 are deuterium.

In the tables below, the ZeroOcc column contains the number of atoms modelled with zero occupancy, the AltConf column contains the number of residues with at least one atom in alternate conformation and the Trace column contains the number of residues modelled with at most 2 atoms.

- Molecule 1 is a protein called Protein traI.

Mol	Chain	Residues	Atoms					ZeroOcc	AltConf	Trace
1	A	267	Total	C	N	O	S	0	0	0
			2077	1288	372	404	13			
1	B	265	Total	C	N	O	S	9	0	0
			2065	1281	370	402	12			

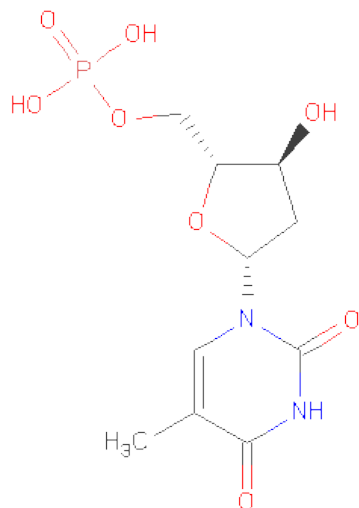
There are 4 discrepancies between the modelled and reference sequences:

Chain	Residue	Modelled	Actual	Comment	Reference
A	16	PHE	TYR	ENGINEERED	UNP P14565
A	301	SER	-	EXPRESSION TAG	UNP P14565
B	1016	PHE	TYR	ENGINEERED	UNP P14565
B	1301	SER	-	EXPRESSION TAG	UNP P14565

- Molecule 2 is MAGNESIUM ION (three-letter code: MG) (formula: Mg).

Mol	Chain	Residues	Atoms		ZeroOcc	AltConf
2	B	1	Total	Mg	0	0
			1	1		
2	A	1	Total	Mg	0	0
			1	1		

- Molecule 3 is THYMIDINE-5'-PHOSPHATE (three-letter code: TMP) (formula: C<sub>10</sub>H<sub>15</sub>N<sub>2</sub>O<sub>8</sub>P).



Mol	Chain	Residues	Atoms					ZeroOcc	AltConf
3	B	1	Total	C	N	O	P	0	0
			20	10	2	7	1		

- Molecule 4 is water.

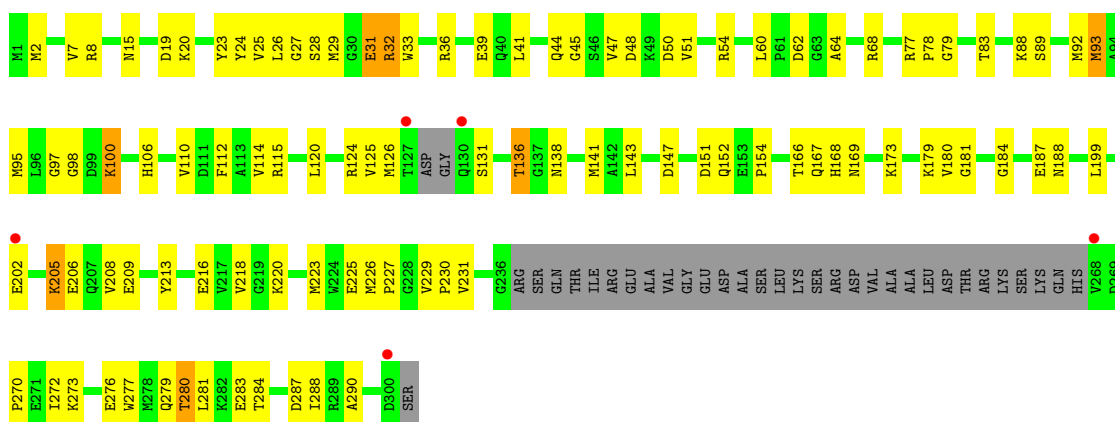
Mol	Chain	Residues	Atoms		ZeroOcc	AltConf
4	A	89	Total	O	0	0
			89	89		
4	B	68	Total	O	0	0
			68	68		

### 3 Residue-property plots

These plots are drawn for all protein, RNA and DNA chains in the entry. The first graphic for a chain summarises the proportions of errors displayed in the second graphic. The second graphic shows the sequence view annotated by issues in geometry and electron density. Residues are color-coded according to the number of geometric quality criteria for which they contain at least one outlier: green = 0, yellow = 1, orange = 2 and red = 3 or more. A red dot above a residue indicates a poor fit to the electron density ( $RSRZ > 2$ ). Stretches of 2 or more consecutive residues without any outlier are shown as a green connector. Residues present in the sample, but not in the model, are shown in grey.

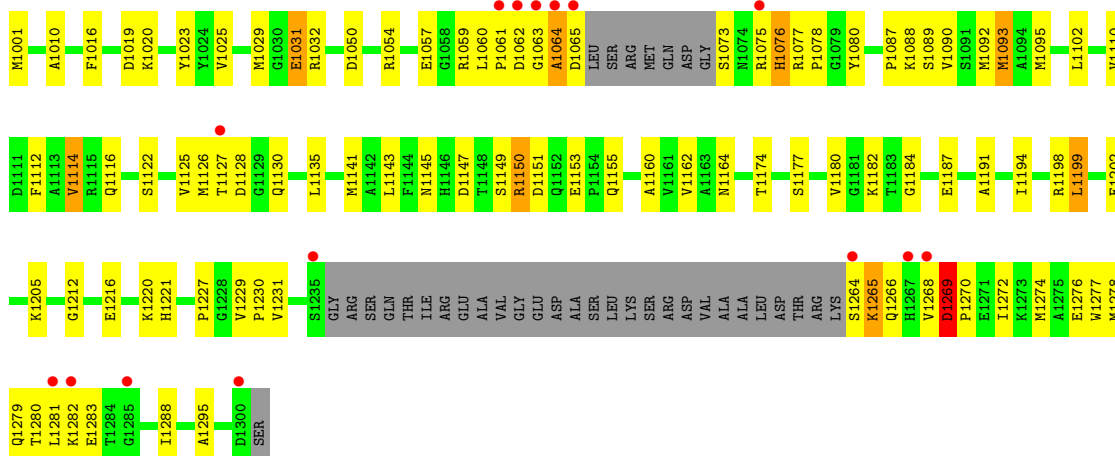
#### • Molecule 1: Protein traI

Chain A:



#### • Molecule 1: Protein traI

Chain B:



## 4 Data and refinement statistics

Property	Value	Source
Space group	P 21 21 21	Depositor
Cell constants a, b, c, $\alpha$ , $\beta$ , $\gamma$	44.89Å 88.26Å 127.29Å 90.00° 90.00° 90.00°	Depositor
Resolution (Å)	44.13 – 2.42 44.13 – 2.42	Depositor EDS
% Data completeness (in resolution range)	98.3 (44.13-2.42) 98.0 (44.13-2.42)	Depositor EDS
$R_{merge}$	(Not available)	Depositor
$R_{sym}$	0.10	Depositor
$\langle I/\sigma(I) \rangle$ <sup>1</sup>	3.53 (at 2.42Å)	Xtriage
Refinement program	CNS	Depositor
R, $R_{free}$	0.211 , 0.270 0.211 , 0.271	Depositor DCC
$R_{free}$ test set	1007 reflections (5.12%)	DCC
Wilson B-factor (Å <sup>2</sup> )	38.2	Xtriage
Anisotropy	0.468	Xtriage
Bulk solvent $k_{sol}$ (e/Å <sup>3</sup> ), $B_{sol}$ (Å <sup>2</sup> )	0.34 , 34.3	EDS
Estimated twinning fraction	No twinning to report.	Xtriage
L-test for twinning	$\langle  L  \rangle = 0.50$ , $\langle L^2 \rangle = 0.33$	Xtriage
Outliers	0 of 19698 reflections	Xtriage
$F_o, F_c$ correlation	0.94	EDS
Total number of atoms	4321	wwPDB-VP
Average B, all atoms (Å <sup>2</sup> )	44.0	wwPDB-VP

Xtriage's analysis on translational NCS is as follows: *The largest off-origin peak in the Patterson function is 7.20% of the height of the origin peak. No significant pseudotranslation is detected.*

<sup>1</sup>Intensities estimated from amplitudes.

## 5 Model quality i

### 5.1 Standard geometry i

Bond lengths and bond angles in the following residue types are not validated in this section: TMP, MG

The Z score for a bond length (or angle) is the number of standard deviations the observed value is removed from the expected value. A bond length (or angle) with  $|Z| > 5$  is considered an outlier worth inspection. RMSZ is the root-mean-square of all Z scores of the bond lengths (or angles).

Mol	Chain	Bond lengths		Bond angles	
		RMSZ	$\# Z  > 5$	RMSZ	$\# Z  > 5$
1	A	0.35	0/2113	0.57	0/2847
1	B	0.34	0/2102	0.60	1/2833 (0.0%)
All	All	0.35	0/4215	0.58	1/5680 (0.0%)

There are no bond length outliers.

All (1) bond angle outliers are listed below:

Mol	Chain	Res	Type	Atoms	Z	Observed(°)	Ideal(°)
1	B	1063	GLY	N-CA-C	-6.53	96.78	113.10

There are no chirality outliers.

There are no planarity outliers.

### 5.2 Close contacts i

In the following table, the Non-H and H(model) columns list the number of non-hydrogen atoms and hydrogen atoms in the chain respectively. The H(added) column lists the number of hydrogens added by MolProbity. The Clashes column lists the number of clashes within the asymmetric unit, and the number in parentheses is this value normalized per 1000 atoms of the molecule in the chain. The Symm-Clashes column gives symmetry related clashes, in the same way as for the Clashes column.

Mol	Chain	Non-H	H(model)	H(added)	Clashes	Symm-Clashes
1	A	2077	0	2010	89	0
1	B	2065	0	1991	105	0
2	A	1	0	0	0	0
2	B	1	0	0	0	0
3	B	20	0	13	12	0
4	A	89	0	0	4	0

*Continued on next page...*

*Continued from previous page...*

Mol	Chain	Non-H	H(model)	H(added)	Clashes	Symm-Clashes
4	B	68	0	0	8	0
All	All	4321	0	4014	188	0

Clashscore is defined as the number of clashes calculated for the entry per 1000 atoms (including hydrogens) of the entry. The overall clashscore for this entry is 23.

All (188) close contacts within the same asymmetric unit are listed below.

Atom-1	Atom-2	Distance(Å)	Clash(Å)
1:B:1265:LYS:CB	3:B:2001:TMP:H53	1.55	1.34
1:B:1265:LYS:HB2	3:B:2001:TMP:C5M	1.65	1.25
1:A:281:LEU:HD21	1:A:288:ILE:HD11	1.30	1.12
1:A:136:THR:HG21	1:A:166:THR:OG1	1.58	1.03
1:B:1150:ARG:H	1:B:1150:ARG:HD3	1.25	1.01
1:A:7:VAL:HG13	1:A:78:PRO:HB2	1.49	0.94
1:B:1265:LYS:CG	3:B:2001:TMP:H53	1.99	0.92
1:B:1265:LYS:HB2	3:B:2001:TMP:H53	0.92	0.89
1:B:1088:LYS:HG2	1:B:1231:VAL:HG13	1.59	0.82
1:B:1029:MET:HB2	1:B:1031:GLU:HG3	1.61	0.81
1:B:1088:LYS:HG3	1:B:1092:MET:HE2	1.63	0.81
1:A:136:THR:HG23	1:A:138:ASN:OD1	1.83	0.78
1:A:126:MET:HA	1:A:131:SER:HA	1.66	0.78
1:B:1128:ASP:HB2	1:B:1130:GLN:HE21	1.51	0.76
1:B:1265:LYS:CG	3:B:2001:TMP:C5M	2.64	0.76
1:B:1281:LEU:HD11	1:B:1288:ILE:HD11	1.67	0.75
1:A:7:VAL:CG1	1:A:78:PRO:HB2	2.18	0.74
1:A:93:MET:HA	1:A:93:MET:HE3	1.68	0.74
1:A:138:ASN:HD21	1:A:167:GLN:H	1.36	0.73
1:B:1075:ARG:NH2	1:B:1080:TYR:OH	2.20	0.73
1:B:1016:PHE:CZ	3:B:2001:TMP:H2'2	2.24	0.73
1:A:44:GLN:HB3	1:B:1180:VAL:HG12	1.71	0.72
1:B:1077:ARG:HG2	4:B:6005:HOH:O	1.88	0.72
1:A:7:VAL:HG12	1:A:79:GLY:O	1.90	0.71
1:A:272:ILE:O	1:A:276:GLU:HG2	1.90	0.71
1:A:93:MET:CE	1:A:93:MET:HA	2.20	0.70
1:B:1265:LYS:CB	3:B:2001:TMP:C5M	2.43	0.69
1:A:29:MET:HG2	1:A:31:GLU:HG3	1.74	0.69
1:A:180:VAL:HG23	1:A:181:GLY:N	2.08	0.68
1:B:1278:MET:O	1:B:1282:LYS:HG3	1.94	0.68
1:A:180:VAL:HG23	1:A:181:GLY:H	1.58	0.68
1:A:20:LYS:HG2	1:B:1220:LYS:HZ1	1.59	0.66
1:A:20:LYS:HE2	1:B:1220:LYS:NZ	2.12	0.65
1:A:136:THR:HG22	1:A:138:ASN:H	1.61	0.65

*Continued on next page...*

*Continued from previous page...*

Atom-1	Atom-2	Distance(Å)	Clash(Å)
1:B:1089:SER:HA	1:B:1092:MET:HE3	1.79	0.65
1:B:1075:ARG:HG3	4:B:6005:HOH:O	1.96	0.64
1:A:89:SER:HA	1:A:92:MET:HE3	1.78	0.64
1:B:1141:MET:HG2	1:B:1162:VAL:HG22	1.79	0.64
1:A:281:LEU:HD21	1:A:288:ILE:CD1	2.19	0.63
1:B:1088:LYS:CG	1:B:1231:VAL:HG13	2.29	0.63
1:A:93:MET:HE2	1:A:97:GLY:HA3	1.81	0.63
1:A:205:LYS:HE2	4:A:6081:HOH:O	1.98	0.62
1:B:1150:ARG:CD	1:B:1150:ARG:H	2.00	0.62
1:A:126:MET:HB3	1:A:131:SER:OG	1.99	0.62
1:B:1060:LEU:O	1:B:1064:ALA:HB2	2.00	0.62
1:B:1075:ARG:HG3	1:B:1164:ASN:HD21	1.65	0.62
1:A:208:VAL:HG12	1:A:213:TYR:HB2	1.82	0.62
1:B:1265:LYS:HG2	3:B:2001:TMP:C5	2.35	0.61
1:B:1061:PRO:HA	4:B:6039:HOH:O	2.00	0.61
1:A:184:GLY:HA3	1:A:187:GLU:OE1	2.00	0.61
1:B:1269:ASP:HB3	1:B:1272:ILE:HD12	1.83	0.60
1:B:1180:VAL:HG23	1:B:1180:VAL:O	2.02	0.60
1:B:1060:LEU:HB2	1:B:1064:ALA:HA	1.84	0.60
1:A:220:LYS:O	1:A:223:MET:HG2	2.02	0.59
1:A:48:ASP:OD2	1:A:51:VAL:HG23	2.02	0.59
1:B:1265:LYS:HG2	3:B:2001:TMP:H53	1.83	0.59
1:B:1116:GLN:HG3	1:B:1199:LEU:HD11	1.85	0.59
1:B:1054:ARG:CD	1:B:1059:ARG:HH12	2.15	0.58
1:B:1265:LYS:HG2	3:B:2001:TMP:C5M	2.34	0.58
1:A:24:TYR:CG	1:A:270:PRO:HB2	2.39	0.58
1:A:95:MET:SD	1:A:147:ASP:HB2	2.45	0.57
1:B:1073:SER:C	1:B:1075:ARG:H	2.08	0.57
1:B:1010:ALA:CB	1:B:1057:GLU:HG3	2.34	0.57
1:B:1054:ARG:HD2	1:B:1059:ARG:HH12	1.69	0.57
1:A:125:VAL:O	1:A:125:VAL:HG13	2.04	0.57
1:A:205:LYS:O	1:A:209:GLU:HG3	2.04	0.56
1:A:31:GLU:HA	1:A:143:LEU:O	2.05	0.56
1:A:26:LEU:HG	1:A:147:ASP:HB3	1.85	0.56
1:B:1216:GLU:HG2	1:B:1227:PRO:HG3	1.87	0.56
1:B:1264:SER:O	1:B:1265:LYS:HB3	2.06	0.56
1:B:1054:ARG:HB3	1:B:1059:ARG:NH1	2.21	0.56
1:A:168:HIS:HB3	1:A:173:LYS:HE2	1.88	0.55
1:B:1155:GLN:HG3	4:B:6054:HOH:O	2.06	0.55
1:A:88:LYS:HG3	1:A:92:MET:HE2	1.88	0.55
1:A:32:ARG:HA	1:A:45:GLY:O	2.06	0.55
1:A:115:ARG:HG3	1:A:115:ARG:HH11	1.70	0.55

*Continued on next page...*

*Continued from previous page...*

Atom-1	Atom-2	Distance(Å)	Clash(Å)
1:B:1288:ILE:HD12	1:B:1288:ILE:N	2.22	0.55
1:A:27:GLY:O	1:B:1194:ILE:HD12	2.06	0.55
1:A:126:MET:CA	1:A:131:SER:HA	2.37	0.54
1:A:287:ASP:OD2	1:A:290:ALA:HB2	2.06	0.54
1:B:1127:THR:O	1:B:1130:GLN:HG2	2.07	0.54
1:B:1220:LYS:HE2	1:B:1221:HIS:NE2	2.23	0.54
1:A:202:GLU:O	1:A:206:GLU:HG3	2.08	0.54
1:B:1020:LYS:HA	1:B:1023:TYR:CE2	2.43	0.53
1:B:1031:GLU:HA	1:B:1143:LEU:O	2.08	0.53
1:B:1125:VAL:O	1:B:1125:VAL:HG13	2.08	0.53
1:A:112:PHE:CE2	1:A:199:LEU:HD21	2.43	0.53
1:B:1265:LYS:HD3	3:B:2001:TMP:H51	1.91	0.53
1:B:1279:GLN:O	1:B:1283:GLU:HG3	2.08	0.53
1:B:1016:PHE:CZ	3:B:2001:TMP:C2'	2.92	0.52
1:B:1276:GLU:O	1:B:1280:THR:HG22	2.10	0.52
1:B:1126:MET:HG3	1:B:1126:MET:O	2.08	0.52
1:B:1076:HIS:N	4:B:6005:HOH:O	2.40	0.52
1:B:1114:VAL:HG13	1:B:1141:MET:CE	2.40	0.52
1:B:1032:ARG:HG2	1:B:1032:ARG:HH11	1.74	0.52
1:A:124:ARG:HH11	1:A:124:ARG:HG3	1.74	0.52
1:A:15:ASN:O	1:A:19:ASP:HB2	2.10	0.51
1:B:1184:GLY:HA3	1:B:1187:GLU:OE1	2.10	0.51
1:A:92:MET:HE2	1:A:231:VAL:HG22	1.92	0.51
1:B:1150:ARG:HD3	1:B:1150:ARG:N	2.09	0.51
1:A:29:MET:CG	1:A:31:GLU:HG3	2.39	0.51
1:B:1032:ARG:NH1	4:B:6125:HOH:O	2.43	0.51
1:A:151:ASP:O	1:A:152:GLN:HB2	2.10	0.51
1:A:218:VAL:HG21	1:A:225:GLU:HG2	1.93	0.51
1:B:1095:MET:SD	1:B:1147:ASP:HB2	2.51	0.50
1:A:7:VAL:HG12	1:A:79:GLY:C	2.31	0.50
1:A:120:LEU:HD13	1:A:188:ASN:HB3	1.93	0.50
1:A:28:SER:HB3	1:B:1191:ALA:O	2.11	0.50
1:B:1025:VAL:HG21	1:B:1277:TRP:CZ3	2.47	0.49
1:B:1093:MET:HB3	1:B:1102:LEU:CD1	2.42	0.49
1:A:136:THR:HG21	1:A:166:THR:HG1	1.72	0.49
1:A:33:TRP:CZ2	1:A:47:VAL:HG13	2.47	0.49
1:B:1202:GLU:O	1:B:1205:LYS:HB3	2.12	0.49
1:A:20:LYS:HE2	1:B:1220:LYS:HZ3	1.78	0.49
1:B:1010:ALA:HB3	1:B:1057:GLU:HG3	1.94	0.49
1:A:29:MET:HE3	1:A:31:GLU:HG3	1.95	0.49
1:A:29:MET:HE3	1:A:31:GLU:CG	2.43	0.48
1:B:1264:SER:O	1:B:1265:LYS:CB	2.61	0.48

*Continued on next page...*

*Continued from previous page...*

Atom-1	Atom-2	Distance(Å)	Clash(Å)
1:A:98:GLY:O	1:A:100:LYS:HD2	2.12	0.48
1:A:92:MET:CE	1:A:231:VAL:HG22	2.44	0.48
1:B:1023:TYR:CD2	1:B:1029:MET:HG2	2.48	0.48
1:B:1092:MET:HE1	1:B:1229:VAL:HG12	1.96	0.47
1:B:1050:ASP:O	1:B:1054:ARG:HG3	2.15	0.47
1:B:1054:ARG:HB3	1:B:1059:ARG:HH12	1.77	0.47
1:B:1073:SER:C	1:B:1075:ARG:N	2.68	0.47
1:B:1112:PHE:HE2	1:B:1199:LEU:HD21	1.80	0.47
1:A:154:PRO:HG3	1:A:277:TRP:CD2	2.50	0.47
1:A:106:HIS:O	1:A:110:VAL:HG23	2.15	0.47
1:A:88:LYS:O	1:A:92:MET:HG3	2.15	0.46
1:B:1020:LYS:HA	1:B:1023:TYR:CZ	2.49	0.46
1:B:1155:GLN:HA	4:B:6054:HOH:O	2.14	0.46
1:A:36:ARG:O	1:A:39:GLU:HG2	2.15	0.46
1:B:1029:MET:O	1:B:1145:ASN:HB2	2.15	0.46
1:B:1182:LYS:HA	1:B:1187:GLU:HG2	1.97	0.46
1:B:1288:ILE:HD12	1:B:1288:ILE:H	1.80	0.46
1:B:1087:PRO:HG2	1:B:1090:VAL:HG23	1.98	0.46
1:A:77:ARG:HB3	4:A:6008:HOH:O	2.15	0.46
1:A:50:ASP:O	1:A:54:ARG:HG3	2.16	0.45
1:A:2:MET:HA	1:A:83:THR:O	2.16	0.45
1:B:1076:HIS:C	1:B:1077:ARG:HD3	2.37	0.45
1:A:25:VAL:HG21	1:A:277:TRP:CZ3	2.51	0.45
1:A:216:GLU:HB2	1:A:227:PRO:HG3	1.97	0.45
1:A:180:VAL:CG2	1:A:181:GLY:H	2.27	0.45
1:A:180:VAL:CG2	1:A:181:GLY:N	2.77	0.45
1:B:1128:ASP:CB	1:B:1130:GLN:HE21	2.27	0.45
1:A:88:LYS:HG2	1:A:231:VAL:HG13	1.99	0.44
1:B:1087:PRO:HG2	1:B:1090:VAL:CG2	2.47	0.44
1:B:1149:SER:OG	1:B:1153:GLU:HB2	2.17	0.44
1:A:68:ARG:NH2	4:A:6123:HOH:O	2.51	0.44
1:B:1077:ARG:HD3	1:B:1077:ARG:N	2.32	0.44
1:B:1269:ASP:HA	1:B:1270:PRO:HD3	1.57	0.44
1:B:1112:PHE:CE2	1:B:1199:LEU:HD21	2.53	0.43
1:B:1075:ARG:CG	1:B:1164:ASN:HD21	2.30	0.43
1:A:199:LEU:HD23	1:A:199:LEU:O	2.18	0.43
1:A:124:ARG:NH1	1:A:124:ARG:HG3	2.33	0.43
1:A:114:VAL:HG13	1:A:141:MET:SD	2.58	0.43
1:B:1122:SER:HB3	1:B:1135:LEU:HD23	2.01	0.43
1:B:1229:VAL:HA	1:B:1230:PRO:HD3	1.82	0.43
1:A:229:VAL:HA	1:A:230:PRO:HD3	1.82	0.43
1:A:112:PHE:CD2	1:A:199:LEU:HD21	2.53	0.43

*Continued on next page...*

Continued from previous page...

Atom-1	Atom-2	Distance(Å)	Clash(Å)
1:A:60:LEU:HD12	1:A:64:ALA:HB3	2.00	0.43
1:A:93:MET:CE	1:A:288:ILE:HG23	2.49	0.43
1:A:179:LYS:HE2	1:A:179:LYS:HB2	1.85	0.42
1:B:1075:ARG:HG2	1:B:1174:THR:CB	2.49	0.42
1:A:279:GLN:HG3	1:A:283:GLU:OE2	2.19	0.42
1:B:1092:MET:CE	1:B:1231:VAL:HG22	2.49	0.42
1:B:1061:PRO:O	1:B:1062:ASP:C	2.58	0.42
1:A:77:ARG:HA	1:A:78:PRO:HD3	1.94	0.42
1:B:1220:LYS:HG2	1:B:1221:HIS:CD2	2.54	0.42
1:A:89:SER:HB2	1:A:226:MET:HE2	2.00	0.42
1:A:41:LEU:CD2	1:A:62:ASP:HB2	2.49	0.42
1:B:1025:VAL:HG22	1:B:1274:MET:CG	2.50	0.42
1:B:1268:VAL:O	1:B:1268:VAL:HG23	2.19	0.42
1:A:92:MET:CE	1:A:231:VAL:HA	2.50	0.41
1:B:1075:ARG:NH1	1:B:1177:SER:HB2	2.35	0.41
1:A:20:LYS:HA	1:A:23:TYR:CZ	2.56	0.41
1:B:1077:ARG:HA	1:B:1078:PRO:HD3	1.91	0.41
1:B:1110:VAL:O	1:B:1114:VAL:HB	2.20	0.41
1:B:1143:LEU:CD2	1:B:1160:ALA:HA	2.51	0.41
1:B:1060:LEU:C	1:B:1061:PRO:O	2.58	0.41
1:A:220:LYS:HA	4:A:6027:HOH:O	2.20	0.41
1:B:1221:HIS:HD2	4:B:6101:HOH:O	2.04	0.41
1:A:273:LYS:HB3	1:A:273:LYS:HE2	1.80	0.41
1:A:280:THR:O	1:A:284:THR:HG23	2.21	0.40
1:B:1212:GLY:HA3	1:B:1295:ALA:O	2.21	0.40
1:A:32:ARG:N	1:A:32:ARG:HD3	2.37	0.40
1:B:1023:TYR:HA	1:B:1147:ASP:OD2	2.21	0.40
1:B:1075:ARG:HG2	1:B:1174:THR:HB	2.03	0.40

There are no symmetry-related clashes.

## 5.3 Torsion angles

### 5.3.1 Protein backbone ⓘ

In the following table, the Percentiles column shows the percent Ramachandran outliers of the chain as a percentile score with respect to all X-ray entries followed by that with respect to entries of similar resolution. The Analysed column shows the number of residues for which the backbone conformation was analysed, and the total number of residues.

Mol	Chain	Analysed	Favoured	Allowed	Outliers	Percentiles
1	A	261/301 (87%)	252 (97%)	8 (3%)	1 (0%)	43 60

Continued on next page...

*Continued from previous page...*

Mol	Chain	Analysed	Favoured	Allowed	Outliers	Percentiles	
1	B	259/301 (86%)	238 (92%)	16 (6%)	5 (2%)	12	14
All	All	520/602 (86%)	490 (94%)	24 (5%)	6 (1%)	19	25

All (6) Ramachandran outliers are listed below:

Mol	Chain	Res	Type
1	A	8	ARG
1	B	1076	HIS
1	B	1269	ASP
1	B	1064	ALA
1	B	1265	LYS
1	B	1266	GLN

### 5.3.2 Protein sidechains ⓘ

In the following table, the Percentiles column shows the percent sidechain outliers of the chain as a percentile score with respect to all X-ray entries followed by that with respect to entries of similar resolution. The Analysed column shows the number of residues for which the sidechain conformation was analysed, and the total number of residues.

Mol	Chain	Analysed	Rotameric	Outliers	Percentiles	
1	A	217/245 (89%)	209 (96%)	8 (4%)	45	66
1	B	216/245 (88%)	205 (95%)	11 (5%)	33	50
All	All	433/490 (88%)	414 (96%)	19 (4%)	39	57

All (19) residues with a non-rotameric sidechain are listed below:

Mol	Chain	Res	Type
1	A	31	GLU
1	A	32	ARG
1	A	93	MET
1	A	100	LYS
1	A	136	THR
1	A	169	ASN
1	A	205	LYS
1	A	280	THR
1	B	1001	MET
1	B	1019	ASP
1	B	1031	GLU
1	B	1065	ASP

*Continued on next page...*

*Continued from previous page...*

Mol	Chain	Res	Type
1	B	1093	MET
1	B	1114	VAL
1	B	1150	ARG
1	B	1151	ASP
1	B	1198	ARG
1	B	1199	LEU
1	B	1269	ASP

Some sidechains can be flipped to improve hydrogen bonding and reduce clashes. All (7) such sidechains are listed below:

Mol	Chain	Res	Type
1	A	138	ASN
1	A	188	ASN
1	A	193	GLN
1	B	1074	ASN
1	B	1108	GLN
1	B	1130	GLN
1	B	1146	HIS

### 5.3.3 RNA ⓘ

There are no RNA chains in this entry.

## 5.4 Non-standard residues in protein, DNA, RNA chains ⓘ

There are no non-standard protein/DNA/RNA residues in this entry.

## 5.5 Carbohydrates ⓘ

There are no carbohydrates in this entry.

## 5.6 Ligand geometry ⓘ

Of 3 ligands modelled in this entry, 2 are monoatomic - leaving 1 for Mogul analysis.

In the following table, the Counts columns list the number of bonds (or angles) for which Mogul statistics could be retrieved, the number of bonds (or angles) that are observed in the model and the number of bonds (or angles) that are defined in the chemical component dictionary. The Link column lists molecule types, if any, to which the group is linked. The Z score for a bond length

(or angle) is the number of standard deviations the observed value is removed from the expected value. A bond length (or angle) with  $|Z| > 2$  is considered an outlier worth inspection. RMSZ is the root-mean-square of all Z scores of the bond lengths (or angles).

Mol	Type	Chain	Res	Link	Bond lengths			Bond angles		
					Counts	RMSZ	$\# Z  > 2$	Counts	RMSZ	$\# Z  > 2$
3	TMP	B	2001	-	19,21,22	0.90	2 (10%)	22,30,33	2.21	4 (18%)

In the following table, the Chirals column lists the number of chiral outliers, the number of chiral centers analysed, the number of these observed in the model and the number defined in the chemical component dictionary. Similar counts are reported in the Torsion and Rings columns. '-' means no outliers of that kind were identified.

Mol	Type	Chain	Res	Link	Chirals	Torsions	Rings
3	TMP	B	2001	-	-	0/5/21/22	0/2/2/2

All (2) bond length outliers are listed below:

Mol	Chain	Res	Type	Atoms	Z	Observed(Å)	Ideal(Å)
3	B	2001	TMP	P-O1P	2.12	1.49	1.46
3	B	2001	TMP	C6-C5	-2.07	1.34	1.40

All (4) bond angle outliers are listed below:

Mol	Chain	Res	Type	Atoms	Z	Observed(°)	Ideal(°)
3	B	2001	TMP	O4'-C1'-N1	7.04	120.91	107.68
3	B	2001	TMP	C6-N1-C2	-5.23	120.92	122.41
3	B	2001	TMP	C2'-C1'-N1	2.66	121.00	114.08
3	B	2001	TMP	C5-C6-N1	2.40	123.92	121.59

There are no chirality outliers.

There are no torsion outliers.

There are no ring outliers.

## 5.7 Other polymers ⓘ

There are no such residues in this entry.

## 5.8 Polymer linkage issues

There are no chain breaks in this entry.

## 6 Fit of model and data ⓘ

### 6.1 Protein, DNA and RNA chains ⓘ

In the following table, the column labelled ‘#RSRZ> 2’ contains the number (and percentage) of RSRZ outliers, followed by percent RSRZ outliers for the chain as percentile scores relative to all X-ray entries and entries of similar resolution. The OWAB column contains the minimum, median, 95<sup>th</sup> percentile and maximum values of the occupancy-weighted average B-factor per residue. The column labelled ‘Q< 0.9’ lists the number of (and percentage) of residues with an average occupancy less than 0.9.

Mol	Chain	Analysed	<RSRZ>	#RSRZ>2	OWAB(Å <sup>2</sup> )	Q<0.9
1	A	267/301 (88%)	-0.11	5 (1%) 64 61	20, 37, 59, 83	0
1	B	264/301 (87%)	0.22	15 (5%) 23 20	23, 44, 82, 107	0
All	All	531/602 (88%)	0.05	20 (3%) 39 35	20, 39, 76, 107	0

All (20) RSRZ outliers are listed below:

Mol	Chain	Res	Type	RSRZ
1	B	1064	ALA	8.0
1	B	1063	GLY	7.3
1	B	1267	HIS	6.4
1	A	300	ASP	6.0
1	A	268	VAL	5.5
1	B	1062	ASP	4.5
1	B	1268	VAL	3.9
1	B	1264	SER	3.6
1	B	1075	ARG	3.3
1	B	1127	THR	3.2
1	B	1285	GLY	2.9
1	B	1061	PRO	2.8
1	B	1282	LYS	2.6
1	A	130	GLN	2.5
1	B	1065	ASP	2.4
1	B	1235	SER	2.4
1	B	1281	LEU	2.3
1	A	127	THR	2.1
1	B	1300	ASP	2.1
1	A	202	GLU	2.0

## 6.2 Non-standard residues in protein, DNA, RNA chains ⓘ

There are no non-standard protein/DNA/RNA residues in this entry.

## 6.3 Carbohydrates ⓘ

There are no carbohydrates in this entry.

## 6.4 Ligands ⓘ

In the following table, the Atoms column lists the number of modelled atoms in the group and the number defined in the chemical component dictionary. LLDF column lists the quality of electron density of the group with respect to its neighbouring residues in protein, DNA or RNA chains. The B-factors column lists the minimum, median, 95<sup>th</sup> percentile and maximum values of B factors of atoms in the group. The column labelled 'Q< 0.9' lists the number of atoms with occupancy less than 0.9.

Mol	Type	Chain	Res	Atoms	RSR	LLDF	B-factors(Å <sup>2</sup> )	Q<0.9
2	MG	B	5002	1/1	0.20	5.78	47,47,47,47	0
2	MG	A	5001	1/1	0.17	3.86	48,48,48,48	0
3	TMP	B	2001	20/21	0.48	2.73	99,101,107,107	0

## 6.5 Other polymers ⓘ

There are no such residues in this entry.