



Full wwPDB X-ray Structure Validation Report ⓘ

May 14, 2014 – 07:00 PM EDT

PDB ID : 4Q7N
Title : Crystal structure of the complex of Buffalo Signalling protein SPB-40 with 4-N-trimethylaminobutyraldehyde at 1.79 Angstrom Resolution
Authors : Chaudhary, A.; Tyagi, T.K.; Singh, A.; Sinha, M.; Bhushan, A.; Kaur, P.; Sharma, S.; Singh, T.P.
Deposited on : 2014-04-25
Resolution : 1.79 Å (reported)

This is a full wwPDB validation report for a publicly released PDB entry.
We welcome your comments at validation@mail.wwpdb.org
A user guide is available at <http://wwpdb.org/ValidationPDFNotes.html>

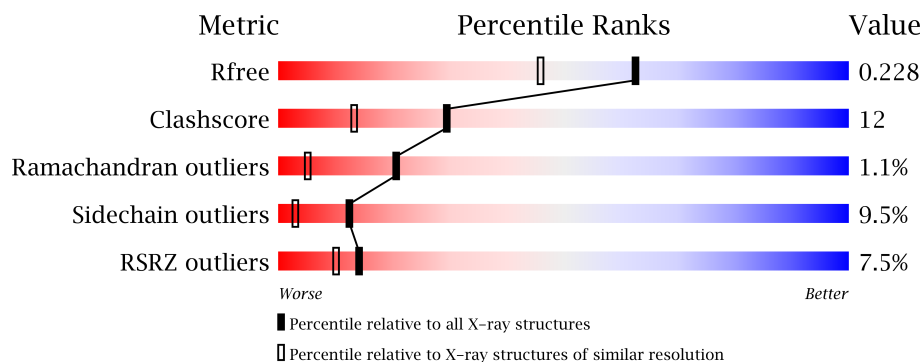
The following versions of software and data (see [references](#)) were used in the production of this report:

MolProbity : 4.02b-467
Mogul : 1.16 November 2013
Xtriage (Phenix) : dev-1439
EDS : stable22978
Percentile statistics : 21963
Refmac : 5.8.0049
CCP4 : 6.3.0 (Settle)
Ideal geometry (proteins) : Engh & Huber (2001)
Ideal geometry (DNA, RNA) : Parkinson et. al. (1996)
Validation Pipeline (wwPDB-VP) : stable22978

1 Overall quality at a glance

The reported resolution of this entry is 1.79 Å.

Percentile scores (ranging between 0-100) for global validation metrics of the entry are shown in the following graphic. The table shows the number of entries on which the scores are based.



Metric	Whole archive (#Entries)	Similar resolution (#Entries, resolution range(Å))
R_{free}	66092	3513 (1.80-1.80)
Clashscore	79885	4461 (1.80-1.80)
Ramachandran outliers	78287	4404 (1.80-1.80)
Sidechain outliers	78261	4403 (1.80-1.80)
RSRZ outliers	66119	3515 (1.80-1.80)

The table below summarises the geometric issues observed across the polymeric chains and their fit to the electron density. The red, orange, yellow and green segments on the lower bar indicate the fraction of residues that contain outliers for ≥ 3 , 2, 1 and 0 types of geometric quality criteria. The upper red bar (where present) indicates the fraction of residues that have poor fit to the electron density.

Mol	Chain	Length	Quality of chain
1	A	361	

The following table lists non-polymeric compounds that are outliers for geometric or electron-density-fit criteria:

Mol	Type	Chain	Res	Geometry	Electron density
2	NAG	A	401	-	X

2 Entry composition i

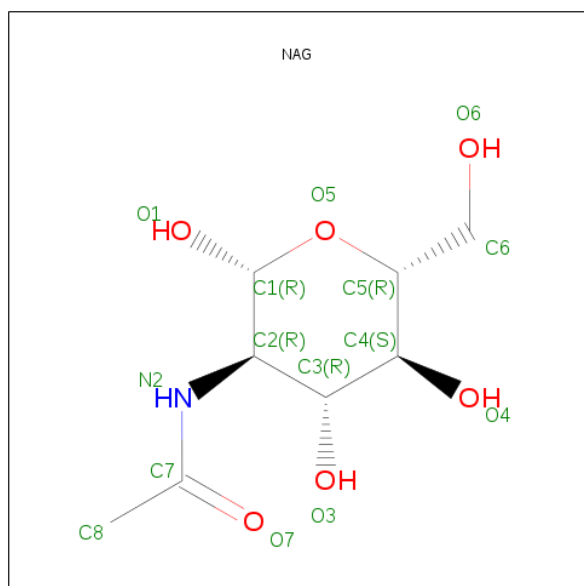
There are 4 unique types of molecules in this entry. The entry contains 3236 atoms, of which 0 are hydrogen and 0 are deuterium.

In the tables below, the ZeroOcc column contains the number of atoms modelled with zero occupancy, the AltConf column contains the number of residues with at least one atom in alternate conformation and the Trace column contains the number of residues modelled with at most 2 atoms.

- Molecule 1 is a protein called Chitinase-3-like protein 1.

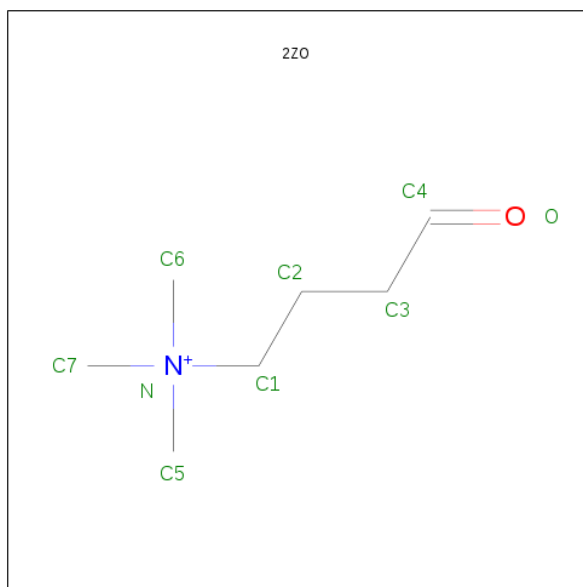
Mol	Chain	Residues	Atoms					ZeroOcc	AltConf	Trace
			Total	C	N	O	S			
1	A	361	2894	1851	507	527	9	0	0	0

- Molecule 2 is SUGAR (N-ACETYL-D-GLUCOSAMINE) (three-letter code: NAG) (formula: $C_8H_{15}NO_6$).



Mol	Chain	Residues	Atoms				ZeroOcc	AltConf
			Total	C	N	O		
2	A	1	14	8	1	5	0	0

- Molecule 3 is N,N,N-TRIMETHYL-4-OXOBUTAN-1-AMINIUM (three-letter code: 2ZO) (formula: $C_7H_{16}NO$).



Mol	Chain	Residues	Atoms				ZeroOcc	AltConf
3	A	1	Total	C	N	O	0	0
			9	7	1	1		

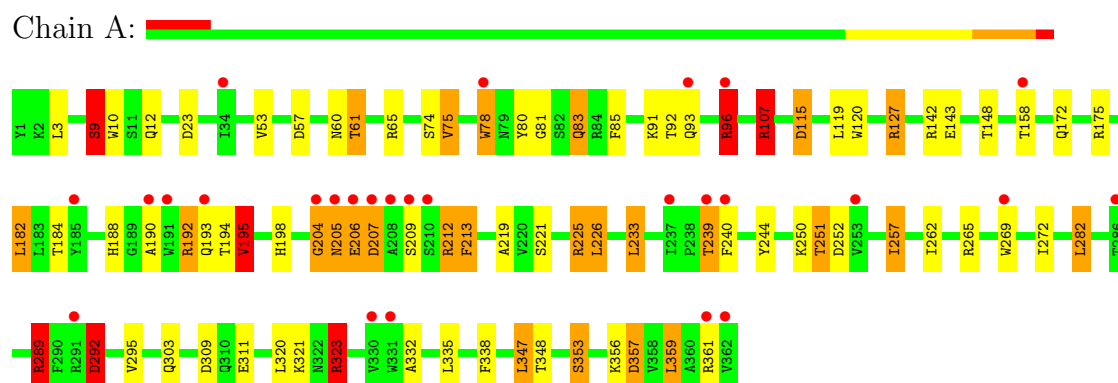
- Molecule 4 is water.

Mol	Chain	Residues	Atoms		ZeroOcc	AltConf
4	A	319	Total	O	0	0
			319	319		

3 Residue-property plots

These plots are drawn for all protein, RNA and DNA chains in the entry. The first graphic for a chain summarises the proportions of errors displayed in the second graphic. The second graphic shows the sequence view annotated by issues in geometry and electron density. Residues are color-coded according to the number of geometric quality criteria for which they contain at least one outlier: green = 0, yellow = 1, orange = 2 and red = 3 or more. A red dot above a residue indicates a poor fit to the electron density ($RSRZ > 2$). Stretches of 2 or more consecutive residues without any outlier are shown as a green connector. Residues present in the sample, but not in the model, are shown in grey.

● Molecule 1: Chitinase-3-like protein 1



4 Data and refinement statistics

Property	Value	Source
Space group	P 21 21 21	Depositor
Cell constants a, b, c, α , β , γ	61.07Å 66.73Å 106.07Å 90.00° 90.00° 90.00°	Depositor
Resolution (Å)	56.49 – 1.79 31.24 – 1.79	Depositor EDS
% Data completeness (in resolution range)	98.7 (56.49-1.79) 98.7 (31.24-1.79)	Depositor EDS
R_{merge}	(Not available)	Depositor
R_{sym}	0.06	Depositor
$\langle I/\sigma(I) \rangle$ ¹	2.39 (at 1.79Å)	Xtriage
Refinement program	REFMAC 5.5.0109	Depositor
R, R_{free}	0.185 , 0.229 0.185 , 0.228	Depositor DCC
R_{free} test set	2050 reflections (5.30%)	DCC
Wilson B-factor (Å ²)	23.6	Xtriage
Anisotropy	0.252	Xtriage
Bulk solvent k_{sol} (e/Å ³), B_{sol} (Å ²)	0.35 , 36.1	EDS
Estimated twinning fraction	No twinning to report.	Xtriage
L-test for twinning	$\langle L \rangle = 0.49$, $\langle L^2 \rangle = 0.32$	Xtriage
Outliers	1 of 40878 reflections (0.002%)	Xtriage
F_o, F_c correlation	0.96	EDS
Total number of atoms	3236	wwPDB-VP
Average B, all atoms (Å ²)	27.0	wwPDB-VP

Xtriage's analysis on translational NCS is as follows: *The largest off-origin peak in the Patterson function is 5.57% of the height of the origin peak. No significant pseudotranslation is detected.*

¹Intensities estimated from amplitudes.

5 Model quality i

5.1 Standard geometry i

Bond lengths and bond angles in the following residue types are not validated in this section: 2ZO, NAG

The Z score for a bond length (or angle) is the number of standard deviations the observed value is removed from the expected value. A bond length (or angle) with $|Z| > 5$ is considered an outlier worth inspection. RMSZ is the root-mean-square of all Z scores of the bond lengths (or angles).

Mol	Chain	Bond lengths		Bond angles	
		RMSZ	$\# Z > 5$	RMSZ	$\# Z > 5$
1	A	1.28	7/2974 (0.2%)	1.41	41/4037 (1.0%)

All (7) bond length outliers are listed below:

Mol	Chain	Res	Type	Atoms	Z	Observed(Å)	Ideal(Å)
1	A	353	SER	CB-OG	15.20	1.62	1.42
1	A	9	SER	CB-OG	-5.75	1.34	1.42
1	A	353	SER	CA-CB	5.63	1.61	1.52
1	A	219	ALA	CA-CB	5.58	1.64	1.52
1	A	127	ARG	CG-CD	5.42	1.65	1.51
1	A	239	THR	CB-CG2	-5.35	1.34	1.52
1	A	295	VAL	CB-CG1	5.14	1.63	1.52

All (41) bond angle outliers are listed below:

Mol	Chain	Res	Type	Atoms	Z	Observed(°)	Ideal(°)
1	A	107	ARG	NE-CZ-NH1	25.44	133.02	120.30
1	A	289	ARG	NE-CZ-NH2	-20.75	109.92	120.30
1	A	107	ARG	NE-CZ-NH2	-18.97	110.82	120.30
1	A	289	ARG	NE-CZ-NH1	11.99	126.30	120.30
1	A	107	ARG	CD-NE-CZ	10.70	138.58	123.60
1	A	323	ARG	NE-CZ-NH2	-10.54	115.03	120.30
1	A	107	ARG	CB-CG-CD	9.42	136.10	111.60
1	A	182	LEU	CB-CG-CD2	8.78	125.93	111.00
1	A	265	ARG	NE-CZ-NH2	-8.75	115.93	120.30
1	A	289	ARG	CG-CD-NE	-8.58	93.79	111.80
1	A	3	LEU	CB-CG-CD2	8.42	125.31	111.00
1	A	75	VAL	CB-CA-C	-8.18	95.87	111.40
1	A	75	VAL	CA-CB-CG2	8.10	123.05	110.90
1	A	195	VAL	CG1-CB-CG2	8.10	123.85	110.90

Continued on next page...

Continued from previous page...

Mol	Chain	Res	Type	Atoms	Z	Observed(°)	Ideal(°)
1	A	226	LEU	CB-CG-CD1	7.75	124.17	111.00
1	A	265	ARG	CG-CD-NE	-7.52	96.01	111.80
1	A	65	ARG	NE-CZ-NH2	-7.05	116.77	120.30
1	A	282	LEU	CB-CG-CD1	6.73	122.44	111.00
1	A	107	ARG	CA-CB-CG	6.37	127.41	113.40
1	A	65	ARG	NE-CZ-NH1	6.34	123.47	120.30
1	A	75	VAL	CG1-CB-CG2	6.17	120.78	110.90
1	A	357	ASP	CB-CG-OD1	6.16	123.84	118.30
1	A	347	LEU	CA-CB-CG	6.15	129.44	115.30
1	A	289	ARG	CD-NE-CZ	6.01	132.02	123.60
1	A	182	LEU	CB-CA-C	-6.01	98.78	110.20
1	A	115	ASP	CB-CG-OD1	6.00	123.70	118.30
1	A	127	ARG	CG-CD-NE	5.89	124.16	111.80
1	A	96	ARG	NE-CZ-NH2	-5.69	117.46	120.30
1	A	359	LEU	CB-CG-CD1	5.59	120.50	111.00
1	A	292	ASP	CB-CG-OD2	5.50	123.25	118.30
1	A	309	ASP	CB-CG-OD1	5.50	123.25	118.30
1	A	80	TYR	C-N-CA	-5.49	110.77	122.30
1	A	23	ASP	CB-CG-OD2	5.44	123.20	118.30
1	A	212	ARG	N-CA-C	-5.38	96.47	111.00
1	A	233	LEU	CB-CG-CD1	5.38	120.14	111.00
1	A	356	LYS	CD-CE-NZ	-5.26	99.59	111.70
1	A	91	LYS	CD-CE-NZ	5.14	123.52	111.70
1	A	9	SER	CA-CB-OG	-5.12	97.38	111.20
1	A	323	ARG	CG-CD-NE	-5.04	101.22	111.80
1	A	195	VAL	CA-CB-CG1	5.03	118.45	110.90
1	A	96	ARG	NE-CZ-NH1	5.02	122.81	120.30

There are no chirality outliers.

There are no planarity outliers.

5.2 Close contacts ⓘ

In the following table, the Non-H and H(model) columns list the number of non-hydrogen atoms and hydrogen atoms in the chain respectively. The H(added) column lists the number of hydrogens added by MolProbity. The Clashes column lists the number of clashes within the asymmetric unit, and the number in parentheses is this value normalized per 1000 atoms of the molecule in the chain. The Symm-Clashes column gives symmetry related clashes, in the same way as for the Clashes column.

Mol	Chain	Non-H	H(model)	H(added)	Clashes	Symm-Clashes
1	A	2894	0	2818	69	1

Continued on next page...

Continued from previous page...

Mol	Chain	Non-H	H(model)	H(added)	Clashes	Symm-Clashes
2	A	14	0	13	0	0
3	A	9	0	0	2	0
4	A	319	0	0	19	1
All	All	3236	0	2831	70	1

Clashscore is defined as the number of clashes calculated for the entry per 1000 atoms (including hydrogens) of the entry. The overall clashscore for this entry is 12.

All (70) close contacts within the same asymmetric unit are listed below.

Atom-1	Atom-2	Distance(Å)	Clash(Å)
1:A:81:GLY:HA3	4:A:813:HOH:O	1.08	1.21
1:A:206:GLU:C	1:A:207:ASP:OD2	1.82	1.18
1:A:107:ARG:HD3	1:A:143:GLU:OE2	1.51	1.08
1:A:195:VAL:HG23	1:A:257:ILE:HD11	1.38	1.05
1:A:206:GLU:O	1:A:207:ASP:OD2	1.74	1.04
1:A:60:ASN:HB3	4:A:767:HOH:O	1.55	1.03
1:A:195:VAL:HG23	1:A:257:ILE:CD1	1.95	0.97
1:A:142:ARG:HD2	4:A:773:HOH:O	1.64	0.95
1:A:204:GLY:HA2	1:A:292:ASP:HB2	1.46	0.94
1:A:311:GLU:HG2	4:A:782:HOH:O	1.72	0.89
1:A:212:ARG:O	1:A:213:PHE:HB2	1.75	0.87
1:A:93:GLN:CD	1:A:96:ARG:HH22	1.81	0.83
1:A:212:ARG:O	1:A:213:PHE:CB	2.30	0.79
1:A:207:ASP:HB2	4:A:618:HOH:O	1.83	0.77
1:A:204:GLY:CA	1:A:292:ASP:HB2	2.15	0.77
1:A:198:HIS:CD2	1:A:198:HIS:H	2.05	0.74
1:A:251:THR:HG23	4:A:700:HOH:O	1.86	0.73
1:A:250:LYS:HZ3	1:A:252:ASP:HB3	1.56	0.69
1:A:93:GLN:NE2	1:A:96:ARG:HH22	1.91	0.68
1:A:225:ARG:NE	1:A:225:ARG:O	2.26	0.68
1:A:148:THR:HG23	4:A:819:HOH:O	1.93	0.67
1:A:10:TRP:HE1	3:A:402:2ZO:C7	2.08	0.66
1:A:57:ASP:O	1:A:61:THR:HG23	1.95	0.65
1:A:120:TRP:CZ3	1:A:158:THR:HB	2.31	0.65
1:A:207:ASP:OD2	1:A:207:ASP:N	2.30	0.64
1:A:338:PHE:O	1:A:348:THR:OG1	2.13	0.64
1:A:221:SER:OG	1:A:323:ARG:NH2	2.29	0.64
1:A:251:THR:CG2	4:A:700:HOH:O	2.44	0.63
1:A:225:ARG:HA	1:A:225:ARG:HE	1.65	0.61
1:A:250:LYS:NZ	1:A:252:ASP:HB3	2.16	0.61
1:A:61:THR:HG22	4:A:727:HOH:O	2.03	0.59
1:A:225:ARG:CA	1:A:225:ARG:HE	2.17	0.58

Continued on next page...

Continued from previous page...

Atom-1	Atom-2	Distance(Å)	Clash(Å)
1:A:323:ARG:HD2	4:A:816:HOH:O	2.04	0.57
1:A:188:HIS:HE1	1:A:194:THR:O	1.88	0.57
1:A:195:VAL:HG23	1:A:257:ILE:HD13	1.83	0.56
1:A:239:THR:HG22	1:A:332:ALA:H	1.71	0.56
1:A:239:THR:HG21	1:A:332:ALA:O	2.05	0.55
1:A:269:TRP:CE3	1:A:272:ILE:HG13	2.41	0.55
1:A:190:ALA:O	1:A:192:ARG:O	2.25	0.55
1:A:53:VAL:CG2	4:A:811:HOH:O	2.55	0.54
1:A:289:ARG:HD3	4:A:815:HOH:O	2.07	0.54
1:A:53:VAL:HG22	4:A:811:HOH:O	2.07	0.54
1:A:119:LEU:HD22	1:A:120:TRP:CZ3	2.43	0.54
1:A:195:VAL:CG2	1:A:257:ILE:HD11	2.26	0.54
1:A:348:THR:HG22	4:A:562:HOH:O	2.08	0.53
1:A:209:SER:N	4:A:618:HOH:O	2.34	0.53
1:A:269:TRP:HE3	1:A:272:ILE:HG13	1.73	0.53
1:A:172:GLN:OE1	1:A:175:ARG:NH1	2.41	0.52
3:A:402:2ZO:C7	4:A:756:HOH:O	2.57	0.52
1:A:262:ILE:H	1:A:303:GLN:HE22	1.59	0.51
1:A:239:THR:HG23	1:A:335:LEU:HB2	1.94	0.49
1:A:206:GLU:HG2	1:A:292:ASP:OD1	2.13	0.48
1:A:57:ASP:O	1:A:61:THR:CG2	2.62	0.47
1:A:204:GLY:HA2	1:A:292:ASP:CB	2.33	0.47
1:A:74:SER:HA	1:A:115:ASP:HB3	1.97	0.46
1:A:212:ARG:O	1:A:213:PHE:CG	2.70	0.45
1:A:239:THR:HG22	1:A:332:ALA:N	2.31	0.45
1:A:205:ASN:O	1:A:206:GLU:C	2.55	0.45
1:A:320:LEU:HD12	1:A:320:LEU:C	2.37	0.44
1:A:78:TRP:CD1	1:A:119:LEU:HD12	2.52	0.44
1:A:142:ARG:CD	4:A:773:HOH:O	2.44	0.42
1:A:321:LYS:CE	4:A:809:HOH:O	2.68	0.42
1:A:240:PHE:HB3	1:A:335:LEU:HD13	2.02	0.41
1:A:83:GLN:HE21	1:A:83:GLN:H	1.68	0.41
1:A:9:SER:O	1:A:12:GLN:HG2	2.20	0.41
1:A:192:ARG:HD3	4:A:762:HOH:O	2.20	0.41
1:A:239:THR:CG2	1:A:332:ALA:H	2.32	0.40
1:A:244:TYR:HB3	1:A:257:ILE:CG1	2.52	0.40
1:A:78:TRP:CD1	1:A:119:LEU:CD1	3.05	0.40
1:A:204:GLY:CA	1:A:292:ASP:CB	2.94	0.40

All (1) symmetry-related close contacts are listed below. The label for Atom-2 includes the symmetry operator and encoded unit-cell translations to be applied.

Atom-1	Atom-2	Distance(Å)	Clash(Å)
1:A:357:ASP:OD2	4:A:615:HOH:O[4_445]	1.91	0.29

5.3 Torsion angles

5.3.1 Protein backbone ⓘ

In the following table, the Percentiles column shows the percent Ramachandran outliers of the chain as a percentile score with respect to all X-ray entries followed by that with respect to entries of similar resolution. The Analysed column shows the number of residues for which the backbone conformation was analysed, and the total number of residues.

Mol	Chain	Analysed	Favoured	Allowed	Outliers	Percentiles
1	A	359/361 (99%)	346 (96%)	9 (2%)	4 (1%)	21 5

All (4) Ramachandran outliers are listed below:

Mol	Chain	Res	Type
1	A	205	ASN
1	A	204	GLY
1	A	213	PHE
1	A	206	GLU

5.3.2 Protein sidechains ⓘ

In the following table, the Percentiles column shows the percent sidechain outliers of the chain as a percentile score with respect to all X-ray entries followed by that with respect to entries of similar resolution. The Analysed column shows the number of residues for which the sidechain conformation was analysed, and the total number of residues.

Mol	Chain	Analysed	Rotameric	Outliers	Percentiles
1	A	304/304 (100%)	275 (90%)	29 (10%)	12 3

All (29) residues with a non-rotameric sidechain are listed below:

Mol	Chain	Res	Type
1	A	9	SER
1	A	61	THR
1	A	75	VAL
1	A	78	TRP
1	A	83	GLN
1	A	85	PHE

Continued on next page...

Continued from previous page...

Mol	Chain	Res	Type
1	A	92	THR
1	A	96	ARG
1	A	107	ARG
1	A	127	ARG
1	A	182	LEU
1	A	184	THR
1	A	192	ARG
1	A	193	GLN
1	A	195	VAL
1	A	207	ASP
1	A	225	ARG
1	A	226	LEU
1	A	233	LEU
1	A	251	THR
1	A	257	ILE
1	A	282	LEU
1	A	289	ARG
1	A	292	ASP
1	A	323	ARG
1	A	347	LEU
1	A	353	SER
1	A	359	LEU
1	A	361	ARG

Some sidechains can be flipped to improve hydrogen bonding and reduce clashes. All (9) such sidechains are listed below:

Mol	Chain	Res	Type
1	A	60	ASN
1	A	83	GLN
1	A	188	HIS
1	A	193	GLN
1	A	198	HIS
1	A	205	ASN
1	A	294	GLN
1	A	303	GLN
1	A	315	ASN

5.3.3 RNA ⓘ

There are no RNA chains in this entry.

5.4 Non-standard residues in protein, DNA, RNA chains ⓘ

There are no non-standard protein/DNA/RNA residues in this entry.

5.5 Carbohydrates ⓘ

There are no carbohydrates in this entry.

5.6 Ligand geometry ⓘ

2 ligands are modelled in this entry.

In the following table, the Counts columns list the number of bonds (or angles) for which Mogul statistics could be retrieved, the number of bonds (or angles) that are observed in the model and the number of bonds (or angles) that are defined in the chemical component dictionary. The Link column lists molecule types, if any, to which the group is linked. The Z score for a bond length (or angle) is the number of standard deviations the observed value is removed from the expected value. A bond length (or angle) with $|Z| > 2$ is considered an outlier worth inspection. RMSZ is the root-mean-square of all Z scores of the bond lengths (or angles).

Mol	Type	Chain	Res	Link	Bond lengths			Bond angles		
					Counts	RMSZ	$\# Z > 2$	Counts	RMSZ	$\# Z > 2$
2	NAG	A	401	1	12,14,15	0.95	1 (8%)	15,19,21	1.77	2 (13%)
3	2ZO	A	402	-	8,8,8	0.86	0	10,10,10	4.14	5 (50%)

In the following table, the Chirals column lists the number of chiral outliers, the number of chiral centers analysed, the number of these observed in the model and the number defined in the chemical component dictionary. Similar counts are reported in the Torsion and Rings columns. '-' means no outliers of that kind were identified.

Mol	Type	Chain	Res	Link	Chirals	Torsions	Rings
2	NAG	A	401	1	-	0/6/23/26	0/1/1/1
3	2ZO	A	402	-	-	0/6/6/6	0/0/0/0

All (1) bond length outliers are listed below:

Mol	Chain	Res	Type	Atoms	Z	Observed(Å)	Ideal(Å)
2	A	401	NAG	C3-C2	3.00	1.57	1.52

All (7) bond angle outliers are listed below:

Mol	Chain	Res	Type	Atoms	Z	Observed(°)	Ideal(°)
3	A	402	2ZO	C2-C3-C4	-10.93	80.32	113.18

Continued on next page...

Continued from previous page...

Mol	Chain	Res	Type	Atoms	Z	Observed(°)	Ideal(°)
3	A	402	2ZO	C1-C2-C3	-5.26	103.23	109.73
2	A	401	NAG	C3-C2-N2	-4.80	104.42	111.62
3	A	402	2ZO	C2-C1-N	-3.72	99.14	116.25
2	A	401	NAG	O7-C7-C8	-2.45	117.35	122.04
3	A	402	2ZO	C7-N-C1	-2.14	101.41	109.92
3	A	402	2ZO	C5-N-C6	2.11	114.61	108.99

There are no chirality outliers.

There are no torsion outliers.

There are no ring outliers.

5.7 Other polymers ⓘ

There are no such residues in this entry.

5.8 Polymer linkage issues

There are no chain breaks in this entry.

6 Fit of model and data ⓘ

6.1 Protein, DNA and RNA chains ⓘ

In the following table, the column labelled ‘#RSRZ> 2’ contains the number (and percentage) of RSRZ outliers, followed by percent RSRZ outliers for the chain as percentile scores relative to all X-ray entries and entries of similar resolution. The OWAB column contains the minimum, median, 95th percentile and maximum values of the occupancy-weighted average B-factor per residue. The column labelled ‘Q< 0.9’ lists the number of (and percentage) of residues with an average occupancy less than 0.9.

Mol	Chain	Analysed	<RSRZ>	#RSRZ>2		OWAB(Å ²)	Q<0.9
1	A	361/361 (100%)	0.39	27 (7%)	14 10	14, 23, 44, 91	0

All (27) RSRZ outliers are listed below:

Mol	Chain	Res	Type	RSRZ
1	A	209	SER	11.8
1	A	208	ALA	11.3
1	A	362	VAL	11.2
1	A	269	TRP	6.2
1	A	205	ASN	5.8
1	A	207	ASP	5.7
1	A	204	GLY	5.6
1	A	206	GLU	4.9
1	A	210	SER	3.6
1	A	253	VAL	3.4
1	A	78	TRP	3.2
1	A	361	ARG	3.1
1	A	193	GLN	3.1
1	A	185	TYR	3.0
1	A	239	THR	2.7
1	A	331	TRP	2.5
1	A	291	ARG	2.4
1	A	330	VAL	2.3
1	A	34	ILE	2.3
1	A	286	THR	2.2
1	A	237	ILE	2.2
1	A	191	TRP	2.1
1	A	93	GLN	2.1
1	A	96	ARG	2.1
1	A	190	ALA	2.0
1	A	158	THR	2.0
1	A	240	PHE	2.0

6.2 Non-standard residues in protein, DNA, RNA chains ⓘ

There are no non-standard protein/DNA/RNA residues in this entry.

6.3 Carbohydrates ⓘ

There are no carbohydrates in this entry.

6.4 Ligands ⓘ

In the following table, the Atoms column lists the number of modelled atoms in the group and the number defined in the chemical component dictionary. LLDF column lists the quality of electron density of the group with respect to its neighbouring residues in protein, DNA or RNA chains. The B-factors column lists the minimum, median, 95th percentile and maximum values of B factors of atoms in the group. The column labelled 'Q< 0.9' lists the number of atoms with occupancy less than 0.9.

Mol	Type	Chain	Res	Atoms	RSR	LLDF	B-factors(Å ²)	Q<0.9
2	NAG	A	401	14/15	0.12	2.56	24,32,39,42	0
3	2ZO	A	402	9/9	0.13	-0.19	18,26,28,33	0

6.5 Other polymers ⓘ

There are no such residues in this entry.