



Full wwPDB X-ray Structure Validation Report

Feb 28, 2014 – 01:22 PM GMT

PDB ID : 1QAB
Title : The structure of human retinol binding protein with its carrier protein transthyretin reveals interaction with the carboxy terminus of RBP
Authors : Naylor, H.M.; Newcomer, M.E.
Deposited on : 1999-02-03
Resolution : 3.20 Å(reported)

This is a full wwPDB validation report for a publicly released PDB entry.
We welcome your comments at validation@mail.wwpdb.org
A user guide is available at <http://wwpdb.org/ValidationPDFNotes.html>

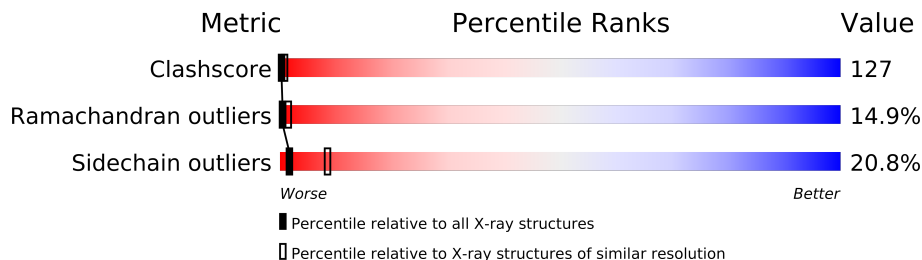
The following versions of software and data (see [references](#)) were used in the production of this report:

MolProbity : 4.02b-467
Mogul : 1.15 2013
Xtriage (Phenix) : **NOT EXECUTED**
EDS : **NOT EXECUTED**
Percentile statistics : 21963
Ideal geometry (proteins) : Engh & Huber (2001)
Ideal geometry (DNA, RNA) : Parkinson et. al. (1996)
Validation Pipeline (wwPDB-VP) : stable22683

1 Overall quality at a glance

The reported resolution of this entry is 3.20 Å.

Percentile scores (ranging between 0-100) for global validation metrics of the entry are shown in the following graphic. The table shows the number of entries on which the scores are based.



Metric	Whole archive (#Entries)	Similar resolution (#Entries, resolution range(Å))
Clashscore	79885	1078 (3.26-3.14)
Ramachandran outliers	78287	1059 (3.26-3.14)
Sidechain outliers	78261	1058 (3.26-3.14)

The table below summarises the geometric issues observed across the polymeric chains and their fit to the electron density. The red, orange, yellow and green segments on the lower bar indicate the fraction of residues that contain outliers for ≥ 3 , 2, 1 and 0 types of geometric quality criteria. The upper red bar (where present) indicates the fraction of residues that have poor fit to the electron density.

Note EDS was not executed.

Mol	Chain	Length	Quality of chain
1	A	127	
1	B	127	
1	C	127	
1	D	127	
2	E	180	
2	F	180	

2 Entry composition

There are 3 unique types of molecules in this entry. The entry contains 6454 atoms, of which 0 are hydrogen and 0 are deuterium.

In the tables below, the ZeroOcc column contains the number of atoms modelled with zero occupancy, the AltConf column contains the number of residues with at least one atom in alternate conformation and the Trace column contains the number of residues modelled with at most 2 atoms.

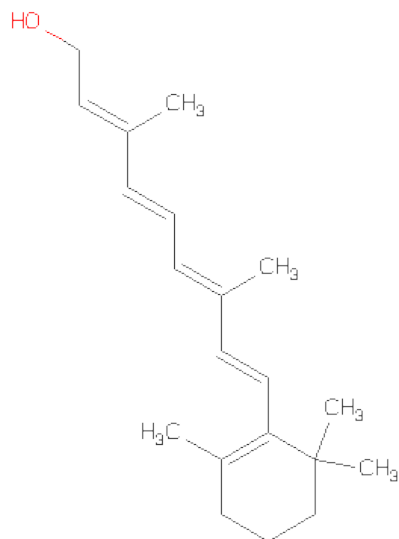
- Molecule 1 is a protein called PROTEIN (transthyretin).

Mol	Chain	Residues	Atoms					ZeroOcc	AltConf	Trace
1	A	124	Total	C	N	O	S	0	0	0
			946	601	157	186	2			
1	B	118	Total	C	N	O	S	0	0	0
			915	584	151	178	2			
1	C	114	Total	C	N	O	S	0	0	0
			881	564	145	170	2			
1	D	113	Total	C	N	O	S	0	0	0
			874	560	144	168	2			

- Molecule 2 is a protein called PROTEIN (retinol binding protein).

Mol	Chain	Residues	Atoms					ZeroOcc	AltConf	Trace
2	E	180	Total	C	N	O	S	0	0	0
			1435	902	245	278	10			
2	F	171	Total	C	N	O	S	0	0	0
			1361	860	229	262	10			

- Molecule 3 is RETINOL (three-letter code: RTL) (formula: C₂₀H₃₀O).



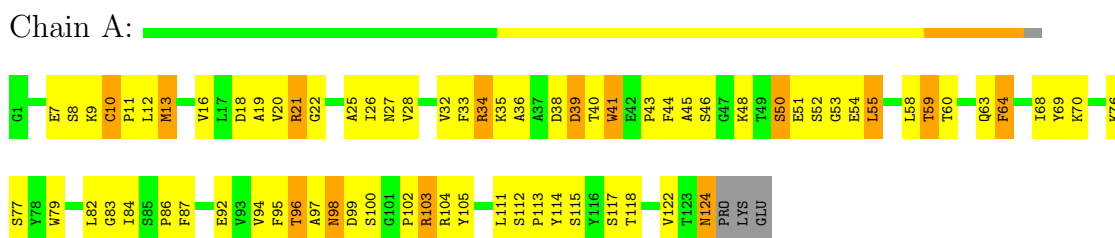
Mol	Chain	Residues	Atoms			ZeroOcc	AltConf
3	E	1	Total	C	O	0	0
			21	20	1		
3	F	1	Total	C	O	0	0
			21	20	1		

3 Residue-property plots

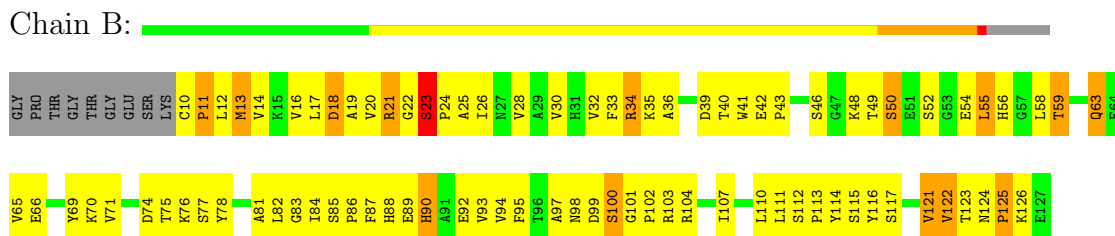
These plots are drawn for all protein, RNA and DNA chains in the entry. The first graphic for a chain summarises the proportions of errors displayed in the second graphic. The second graphic shows the sequence view annotated by issues in geometry and electron density. Residues are color-coded according to the number of geometric quality criteria for which they contain at least one outlier: green = 0, yellow = 1, orange = 2 and red = 3 or more. A red dot above a residue indicates a poor fit to the electron density ($RSRZ > 2$). Stretches of 2 or more consecutive residues without any outlier are shown as a green connector. Residues present in the sample, but not in the model, are shown in grey.

Note EDS was not executed.

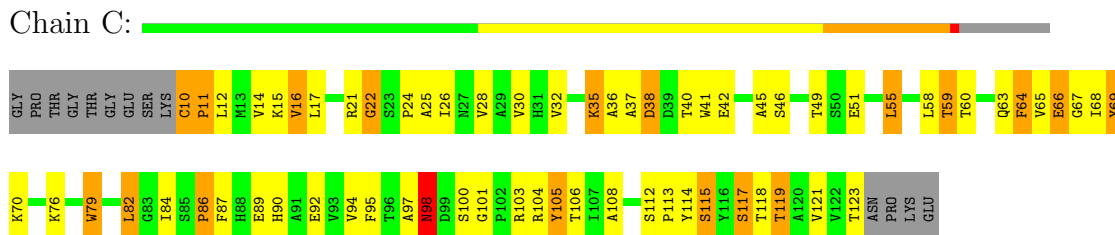
• Molecule 1: PROTEIN (transthyretin)



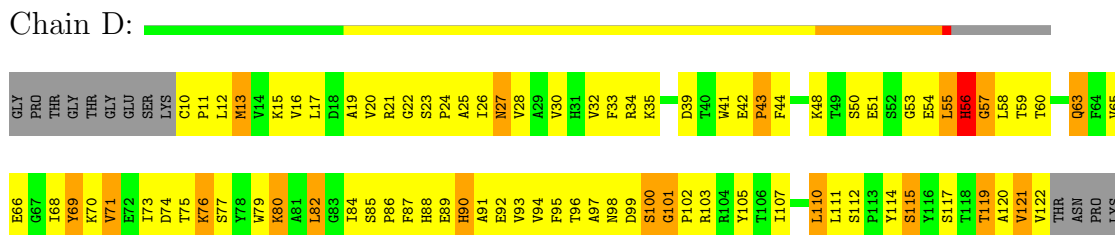
• Molecule 1: PROTEIN (transthyretin)



• Molecule 1: PROTEIN (transthyretin)



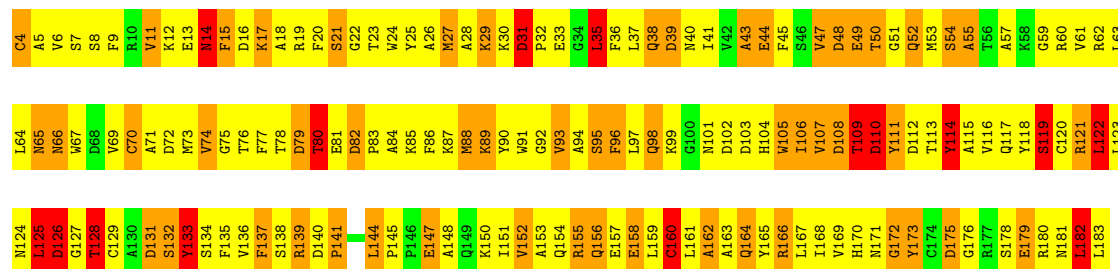
• Molecule 1: PROTEIN (transthyretin)



GLU

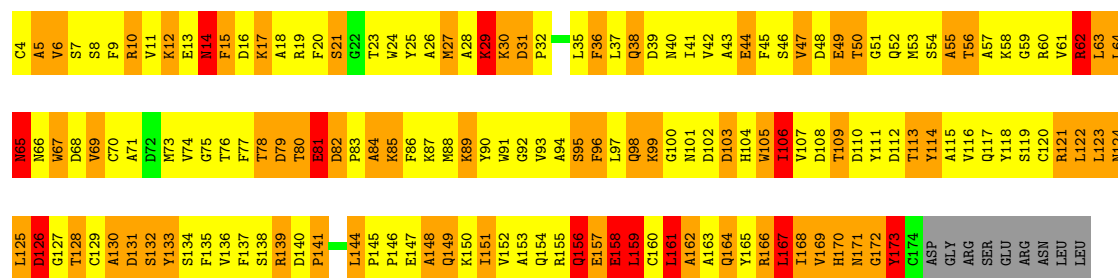
- Molecule 2: PROTEIN (retinol binding protein)

Chain E:



- Molecule 2: PROTEIN (retinol binding protein)

Chain F:



4 Data and refinement statistics

Xtriage (Phenix) and EDS were not executed - this section will therefore be incomplete.

Property	Value	Source
Space group	P 41 21 2	Depositor
Cell constants a, b, c, α , β , γ	140.23Å 140.23Å 124.08Å 90.00° 90.00° 90.00°	Depositor
Resolution (Å)	6.20 – 3.20	Depositor
% Data completeness (in resolution range)	(Not available) (6.20-3.20)	Depositor
R_{merge}	0.12	Depositor
R_{sym}	(Not available)	Depositor
Refinement program	CNS 0.4	Depositor
R, R_{free}	0.278 , 0.403	Depositor
Estimated twinning fraction	No twinning to report.	Xtriage
Total number of atoms	6454	wwPDB-VP
Average B, all atoms (Å ²)	51.0	wwPDB-VP

5 Model quality

5.1 Standard geometry

Bond lengths and bond angles in the following residue types are not validated in this section: RTL

The Z score for a bond length (or angle) is the number of standard deviations the observed value is removed from the expected value. A bond length (or angle) with $|Z| > 5$ is considered an outlier worth inspection. RMSZ is the root-mean-square of all Z scores of the bond lengths (or angles).

Mol	Chain	Bond lengths		Bond angles	
		RMSZ	$\# Z > 5$	RMSZ	$\# Z > 5$
1	A	0.55	0/970	0.81	0/1322
1	B	0.53	0/939	0.82	0/1279
1	C	0.57	0/904	0.84	0/1233
1	D	0.59	0/897	0.85	0/1223
2	E	0.56	0/1467	0.92	1/1984 (0.1%)
2	F	0.58	0/1393	0.89	1/1887 (0.1%)
All	All	0.56	0/6570	0.86	2/8928 (0.0%)

There are no bond length outliers.

All (2) bond angle outliers are listed below:

Mol	Chain	Res	Type	Atoms	Z	Observed(°)	Ideal(°)
2	E	166	ARG	N-CA-C	-5.56	95.99	111.00
2	F	106	ILE	N-CA-C	-5.12	97.18	111.00

There are no chirality outliers.

There are no planarity outliers.

5.2 Close contacts

In the following table, the Non-H and H(model) columns list the number of non-hydrogen atoms and hydrogen atoms in the chain respectively. The H(added) column lists the number of hydrogens added by MolProbity. The Clashes column lists the number of clashes within the asymmetric unit, and the number in parentheses is this value normalized per 1000 atoms of the molecule in the chain. The Symm-Clashes column gives symmetry related clashes, in the same way as for the Clashes column.

Mol	Chain	Non-H	H(model)	H(added)	Clashes	Symm-Clashes
1	A	946	0	921	143	0

Continued on next page...

Continued from previous page...

Mol	Chain	Non-H	H(model)	H(added)	Clashes	Symm-Clashes
1	B	915	0	890	202	0
1	C	881	0	856	106	0
1	D	874	0	851	201	0
2	E	1435	0	1356	511	15
2	F	1361	0	1285	526	16
3	E	21	0	29	12	0
3	F	21	0	29	15	0
All	All	6454	0	6217	1608	16

Clashscore is defined as the number of clashes calculated for the entry per 1000 atoms (including hydrogens) of the entry. The overall clashscore for this entry is 127.

All (1608) close contacts within the same asymmetric unit are listed below.

Atom-1	Atom-2	Distance(Å)	Clash(Å)
2:F:20:PHE:HE2	2:F:45:PHE:CE1	1.20	1.56
2:F:28:ALA:HB3	2:F:136:VAL:CG2	1.38	1.51
2:F:6:VAL:CG1	2:F:129:CYS:HB2	1.43	1.45
1:B:18:ASP:OD2	1:B:21:ARG:CG	1.64	1.43
2:F:20:PHE:CE2	2:F:45:PHE:CE1	2.07	1.40
2:F:103:ASP:OD1	2:F:105:TRP:CH2	1.75	1.39
2:E:32:PRO:HG3	2:E:133:TYR:CB	1.54	1.35
2:F:122:LEU:HD23	2:F:123:LEU:N	1.39	1.34
2:F:30:LYS:HE3	2:F:31:ASP:N	1.41	1.34
1:B:104:ARG:O	1:B:122:VAL:CG2	1.74	1.34
1:B:18:ASP:CG	1:B:21:ARG:HG3	1.47	1.32
2:F:133:TYR:HD1	2:F:133:TYR:O	1.06	1.32
2:E:38:GLN:CB	2:E:60:ARG:O	1.75	1.32
2:F:160:CYS:C	2:F:161:LEU:HD23	1.50	1.31
2:F:85:LYS:HD3	2:F:105:TRP:CD1	1.65	1.31
2:F:77:PHE:HE2	2:F:104:HIS:CD2	1.49	1.31
2:F:28:ALA:CB	2:F:136:VAL:HG21	1.58	1.30
2:E:123:LEU:HD12	2:E:128:THR:O	1.33	1.29
2:F:133:TYR:O	2:F:133:TYR:CD1	1.87	1.28
2:E:32:PRO:HB3	2:E:132:SER:O	1.31	1.28
2:F:160:CYS:C	2:F:161:LEU:CD2	2.02	1.28
1:B:104:ARG:O	1:B:122:VAL:HG21	1.19	1.26
2:F:28:ALA:O	2:F:29:LYS:HG2	1.24	1.26
2:F:90:TYR:HE1	2:F:102:ASP:OD2	1.10	1.26
2:F:5:ALA:HA	2:F:128:THR:OG1	1.34	1.25
1:B:102:PRO:CB	1:B:123:THR:O	1.84	1.25
1:B:102:PRO:CG	1:B:123:THR:O	1.84	1.24
2:E:164:GLN:O	2:E:165:TYR:CG	1.92	1.22

Continued on next page...

Continued from previous page...

Atom-1	Atom-2	Distance(Å)	Clash(Å)
2:F:37:LEU:HA	2:F:61:VAL:CG2	1.68	1.22
1:A:64:PHE:HE1	1:A:69:TYR:CE2	1.56	1.22
1:D:87:PHE:HD2	1:D:88:HIS:CD2	1.55	1.22
2:F:38:GLN:HB2	2:F:60:ARG:O	1.31	1.21
1:B:102:PRO:HG3	1:B:123:THR:O	1.33	1.21
2:F:103:ASP:OD1	2:F:105:TRP:CZ2	1.93	1.21
2:E:9:PHE:CE2	2:E:160:CYS:HB3	1.74	1.21
2:E:153:ALA:N	2:E:156:GLN:HE22	1.40	1.20
2:E:38:GLN:HE21	2:E:60:ARG:NH2	1.37	1.19
2:E:6:VAL:H	2:E:128:THR:HB	1.08	1.18
1:A:13:MET:CE	1:A:104:ARG:HH12	1.57	1.18
1:A:79:TRP:CH2	1:A:113:PRO:HD3	1.78	1.17
1:A:64:PHE:CE1	1:A:69:TYR:CE2	2.32	1.17
1:D:87:PHE:CD2	1:D:88:HIS:CD2	2.32	1.17
1:A:26:ILE:HG13	1:A:50:SER:O	1.42	1.17
1:B:13:MET:HG3	1:B:56:HIS:CD2	1.78	1.17
2:E:114:TYR:CG	2:E:114:TYR:O	1.98	1.15
1:D:114:TYR:OH	2:E:95:SER:HB2	1.43	1.15
1:A:18:ASP:OD2	1:A:21:ARG:CD	1.92	1.15
2:E:29:LYS:HB2	2:E:29:LYS:NZ	1.57	1.15
1:B:102:PRO:HB2	1:B:122:VAL:HG12	1.29	1.14
1:A:18:ASP:OD2	1:A:21:ARG:HD3	1.46	1.14
1:A:79:TRP:CZ2	1:A:113:PRO:HD3	1.80	1.14
2:E:108:ASP:O	2:E:109:THR:HG22	1.45	1.14
2:F:88:MET:SD	2:F:104:HIS:HD2	1.70	1.13
2:F:37:LEU:HD23	2:F:61:VAL:CG2	1.78	1.13
2:E:152:VAL:C	2:E:156:GLN:HE22	1.51	1.13
2:F:90:TYR:CE1	2:F:102:ASP:OD2	2.02	1.13
1:B:12:LEU:HD11	1:B:107:ILE:CD1	1.79	1.12
2:F:85:LYS:HD3	2:F:105:TRP:NE1	1.64	1.12
2:E:9:PHE:HE2	2:E:160:CYS:HB3	1.02	1.12
1:B:20:VAL:HG11	2:F:64:LEU:HD21	1.16	1.12
1:B:75:THR:HG22	1:B:111:LEU:CD1	1.80	1.12
2:F:157:GLU:CA	2:F:157:GLU:OE2	1.97	1.12
2:F:5:ALA:HA	2:F:128:THR:CB	1.79	1.12
2:E:153:ALA:CA	2:E:156:GLN:HE22	1.61	1.12
1:C:115:SER:HB2	1:D:119:THR:OG1	1.47	1.12
2:F:66:ASN:CG	2:F:67:TRP:H	1.52	1.12
2:E:116:VAL:HG12	2:E:117:GLN:H	1.05	1.12
2:E:19:ARG:O	2:E:111:TYR:CB	1.97	1.12
1:B:121:VAL:CG1	1:B:122:VAL:H	1.60	1.11
2:E:78:THR:OG1	2:E:87:LYS:HB2	1.48	1.11

Continued on next page...

Continued from previous page...

Atom-1	Atom-2	Distance(Å)	Clash(Å)
1:A:18:ASP:OD2	1:A:21:ARG:NE	1.83	1.11
1:C:65:VAL:O	1:C:69:TYR:OH	1.67	1.11
2:E:170:HIS:O	2:E:171:ASN:ND2	1.82	1.10
2:F:160:CYS:O	2:F:161:LEU:HD22	1.51	1.10
1:B:121:VAL:HG12	1:B:122:VAL:N	1.58	1.10
1:D:16:VAL:O	1:D:17:LEU:HD23	1.49	1.10
2:F:77:PHE:CE2	2:F:104:HIS:CD2	2.39	1.09
1:B:104:ARG:C	1:B:122:VAL:HG21	1.73	1.09
2:E:182:LEU:CD2	2:E:183:LEU:H	1.64	1.09
1:B:87:PHE:CD2	1:B:88:HIS:HD2	1.69	1.09
2:E:159:LEU:HD12	2:E:162:ALA:N	1.67	1.09
2:E:69:VAL:HA	2:E:182:LEU:HG	1.34	1.09
1:B:34:ARG:NH2	1:B:65:VAL:HG23	1.67	1.09
2:F:37:LEU:HA	2:F:61:VAL:HG22	1.34	1.09
1:B:87:PHE:CD2	1:B:88:HIS:CD2	2.41	1.09
1:B:87:PHE:HD2	1:B:88:HIS:CD2	1.69	1.09
2:F:13:GLU:O	2:F:15:PHE:N	1.83	1.09
1:D:54:GLU:HB3	1:D:56:HIS:CE1	1.86	1.09
2:F:6:VAL:HG12	2:F:129:CYS:HB2	1.35	1.09
2:E:181:ASN:O	2:E:182:LEU:HB2	1.50	1.09
2:F:6:VAL:CG1	2:F:129:CYS:CB	2.29	1.08
2:E:6:VAL:HG13	2:E:129:CYS:HB2	1.14	1.08
1:B:75:THR:CG2	1:B:111:LEU:HD13	1.83	1.08
1:D:99:ASP:O	1:D:101:GLY:N	1.86	1.08
1:D:66:GLU:OE2	1:D:99:ASP:N	1.85	1.08
2:F:156:GLN:HG3	2:F:161:LEU:CD1	1.84	1.08
2:E:29:LYS:HG3	2:E:168:ILE:HD11	1.10	1.08
1:B:102:PRO:HB3	1:B:123:THR:O	1.50	1.08
2:E:29:LYS:HB2	2:E:29:LYS:HZ2	1.02	1.08
1:A:117:SER:HB3	1:B:117:SER:HB3	1.34	1.07
2:E:29:LYS:HG3	2:E:168:ILE:CD1	1.84	1.07
1:C:10:CYS:O	1:C:104:ARG:HD2	1.52	1.07
2:E:159:LEU:O	2:E:161:LEU:N	1.87	1.07
2:F:95:SER:O	2:F:97:LEU:N	1.86	1.07
2:F:66:ASN:O	2:F:67:TRP:O	1.73	1.07
2:E:116:VAL:CG1	2:E:117:GLN:H	1.68	1.07
2:E:116:VAL:HG12	2:E:117:GLN:N	1.59	1.07
1:C:64:PHE:HE1	1:C:69:TYR:CE2	1.71	1.07
1:D:12:LEU:HG	1:D:12:LEU:O	1.39	1.06
1:C:112:SER:HB2	1:C:115:SER:O	1.55	1.06
2:F:28:ALA:O	2:F:29:LYS:CG	2.02	1.06
1:D:54:GLU:HB3	1:D:56:HIS:HE1	1.15	1.06

Continued on next page...

Continued from previous page...

Atom-1	Atom-2	Distance(Å)	Clash(Å)
2:E:182:LEU:HD22	2:E:183:LEU:N	1.70	1.06
2:F:122:LEU:C	2:F:122:LEU:HD23	1.72	1.06
2:F:41:ILE:HG22	2:F:41:ILE:O	1.50	1.06
1:B:102:PRO:HG3	1:B:123:THR:C	1.75	1.06
2:F:169:VAL:O	2:F:170:HIS:CG	2.08	1.05
2:F:65:ASN:HD22	2:F:65:ASN:C	1.60	1.05
2:F:38:GLN:HA	2:F:38:GLN:OE1	1.55	1.05
2:E:38:GLN:HB2	2:E:60:ARG:O	0.88	1.05
1:D:68:ILE:HD13	1:D:96:THR:OG1	1.54	1.05
2:F:17:LYS:NZ	2:F:51:GLY:O	1.89	1.04
2:F:6:VAL:HG11	2:F:129:CYS:HB2	1.38	1.04
2:E:19:ARG:O	2:E:111:TYR:HB3	1.52	1.04
2:E:39:ASP:OD1	2:E:60:ARG:NH1	1.88	1.04
2:E:114:TYR:H	2:E:138:SER:HA	1.18	1.03
2:F:5:ALA:C	2:F:128:THR:HB	1.79	1.03
2:E:152:VAL:C	2:E:156:GLN:NE2	2.11	1.03
1:A:98:ASN:OD1	1:A:102:PRO:HA	1.57	1.03
2:E:28:ALA:HB1	2:E:165:TYR:HB3	1.41	1.02
1:C:115:SER:CB	1:D:119:THR:OG1	2.07	1.02
2:F:159:LEU:O	2:F:159:LEU:CD1	2.07	1.02
1:A:26:ILE:HD12	1:A:51:GLU:HA	1.04	1.02
1:C:64:PHE:CE1	1:C:69:TYR:CE2	2.47	1.02
2:E:182:LEU:HD22	2:E:183:LEU:H	0.91	1.02
2:E:31:ASP:OD2	2:E:31:ASP:O	1.77	1.02
1:A:13:MET:HE1	1:A:104:ARG:HH12	1.22	1.02
1:A:36:ALA:HB3	1:A:40:THR:HG22	1.41	1.02
2:E:32:PRO:CG	2:E:133:TYR:HB2	1.88	1.01
2:F:17:LYS:HD3	2:F:53:MET:HB2	1.42	1.01
1:B:85:SER:OG	2:F:96:PHE:HA	1.59	1.01
1:B:20:VAL:CG1	2:F:64:LEU:HD21	1.89	1.01
1:D:13:MET:SD	1:D:54:GLU:HG2	2.01	1.01
2:E:40:ASN:ND2	2:E:173:TYR:HB2	1.74	1.01
2:F:37:LEU:CD2	2:F:61:VAL:HG23	1.91	1.00
2:E:110:ASP:O	2:E:112:ASP:N	1.94	1.00
1:A:26:ILE:CD1	1:A:51:GLU:HA	1.91	1.00
1:B:12:LEU:CD1	1:B:107:ILE:HD12	1.90	1.00
2:E:175:ASP:HB3	2:E:180:ARG:HD2	1.43	1.00
2:F:28:ALA:HB3	2:F:136:VAL:HG23	1.40	1.00
2:E:65:ASN:HB3	2:E:66:ASN:ND2	1.76	1.00
1:A:32:VAL:HG23	1:A:45:ALA:O	1.61	1.00
2:E:29:LYS:CG	2:E:168:ILE:HD11	1.91	1.00
2:F:161:LEU:HD23	2:F:161:LEU:N	1.71	1.00

Continued on next page...

Continued from previous page...

Atom-1	Atom-2	Distance(Å)	Clash(Å)
2:F:159:LEU:O	2:F:159:LEU:HD13	1.60	1.00
2:E:123:LEU:HD22	2:E:123:LEU:N	1.76	1.00
1:B:41:TRP:CE2	1:B:70:LYS:HE2	1.97	1.00
2:F:123:LEU:CD2	2:F:123:LEU:N	2.23	0.99
1:D:70:LYS:HD2	1:D:92:GLU:OE1	1.60	0.99
2:F:20:PHE:CE2	2:F:45:PHE:CD1	2.49	0.99
1:B:66:GLU:HG3	1:B:99:ASP:OD1	1.61	0.99
2:E:164:GLN:O	2:E:165:TYR:CD1	2.16	0.99
1:C:38:ASP:OD1	1:C:40:THR:HG22	1.60	0.99
2:F:11:VAL:CG2	2:F:84:ALA:CB	2.40	0.99
2:F:38:GLN:CB	2:F:60:ARG:O	2.11	0.98
2:E:29:LYS:CB	2:E:29:LYS:NZ	2.24	0.98
1:D:114:TYR:OH	2:E:95:SER:CB	2.11	0.98
2:F:14:ASN:O	2:F:15:PHE:O	1.81	0.98
2:F:40:ASN:OD1	2:F:170:HIS:HA	1.61	0.98
2:E:152:VAL:O	2:E:156:GLN:OE1	1.82	0.98
2:F:30:LYS:CE	2:F:31:ASP:N	2.27	0.98
1:A:13:MET:CE	1:A:104:ARG:NH1	2.27	0.98
1:A:118:THR:O	1:B:115:SER:OG	1.82	0.97
2:F:169:VAL:O	2:F:170:HIS:CD2	2.17	0.97
2:E:6:VAL:CG1	2:E:129:CYS:HB2	1.93	0.97
1:B:121:VAL:HG13	1:D:24:PRO:HD3	1.45	0.97
2:E:47:VAL:HG12	2:E:48:ASP:N	1.79	0.97
2:E:135:PHE:HB3	2:E:137:PHE:CE1	2.00	0.97
2:F:77:PHE:CE2	2:F:88:MET:SD	2.57	0.97
1:B:88:HIS:CE1	1:B:116:TYR:CD2	2.53	0.97
2:E:109:THR:HB	2:E:115:ALA:CB	1.94	0.96
2:F:11:VAL:HG23	2:F:84:ALA:CB	1.94	0.96
1:D:66:GLU:HA	1:D:97:ALA:O	1.66	0.96
2:E:156:GLN:HA	2:E:162:ALA:HB3	1.47	0.96
1:B:121:VAL:HG12	1:B:122:VAL:H	0.81	0.96
1:C:95:PHE:HA	1:D:89:GLU:HG2	1.47	0.96
1:D:16:VAL:CG1	1:D:111:LEU:HD11	1.95	0.95
2:E:108:ASP:OD1	2:E:155:ARG:NE	1.99	0.95
1:B:123:THR:HG23	1:B:125:PRO:HD3	1.48	0.95
2:E:182:LEU:HD22	2:E:183:LEU:HG	1.46	0.95
2:F:156:GLN:HG3	2:F:161:LEU:HG	1.47	0.95
2:E:38:GLN:HE21	2:E:60:ARG:HH22	1.14	0.95
2:F:156:GLN:HG3	2:F:161:LEU:CG	1.96	0.95
2:F:37:LEU:CA	2:F:61:VAL:HG22	1.96	0.94
1:D:68:ILE:CD1	1:D:96:THR:OG1	2.14	0.94
1:C:38:ASP:OD1	1:C:40:THR:CG2	2.14	0.94

Continued on next page...

Continued from previous page...

Atom-1	Atom-2	Distance(Å)	Clash(Å)
2:F:26:ALA:HB2	2:F:41:ILE:HG22	1.49	0.94
2:F:20:PHE:CE2	2:F:45:PHE:HE1	1.64	0.94
2:E:159:LEU:CG	2:E:162:ALA:HB2	1.97	0.94
2:F:27:MET:N	2:F:168:ILE:HD11	1.83	0.94
2:F:37:LEU:HD23	2:F:61:VAL:HG21	1.50	0.94
2:E:32:PRO:HG3	2:E:133:TYR:HB2	0.96	0.94
1:D:66:GLU:CD	1:D:99:ASP:H	1.71	0.94
2:F:123:LEU:HD23	2:F:123:LEU:N	1.82	0.94
2:E:138:SER:OG	2:E:144:LEU:HD22	1.68	0.94
1:C:36:ALA:HB2	1:C:42:GLU:HG3	1.47	0.94
2:E:153:ALA:CA	2:E:156:GLN:NE2	2.29	0.94
2:E:64:LEU:O	2:E:65:ASN:HB2	1.66	0.94
2:F:160:CYS:O	2:F:161:LEU:CD2	2.12	0.93
2:F:122:LEU:C	2:F:123:LEU:HD22	1.87	0.93
2:E:70:CYS:H	2:E:182:LEU:CD1	1.80	0.93
1:B:75:THR:HG22	1:B:111:LEU:HD13	0.94	0.93
1:A:100:SER:HB2	2:F:91:TRP:CG	2.04	0.93
1:B:12:LEU:HD11	1:B:107:ILE:HD12	0.96	0.93
2:F:173:TYR:O	2:F:173:TYR:HD1	1.48	0.93
1:B:20:VAL:HG11	2:F:64:LEU:CD2	1.99	0.93
2:E:38:GLN:NE2	2:E:60:ARG:NH2	2.15	0.93
1:A:36:ALA:CB	1:A:40:THR:HG22	1.98	0.93
2:F:11:VAL:HG21	2:F:84:ALA:HB3	1.51	0.92
2:E:155:ARG:HH21	2:E:155:ARG:CG	1.81	0.92
2:E:159:LEU:HB3	2:E:162:ALA:HB2	1.52	0.92
2:E:40:ASN:HD21	2:E:173:TYR:HB2	1.35	0.92
1:B:34:ARG:NH2	1:B:66:GLU:O	2.03	0.92
2:F:169:VAL:C	2:F:170:HIS:CD2	2.43	0.92
2:E:156:GLN:HG2	2:E:163:ALA:HB3	1.48	0.92
1:B:104:ARG:O	1:B:122:VAL:CB	2.18	0.92
2:E:6:VAL:N	2:E:128:THR:HB	1.84	0.92
2:E:120:CYS:C	2:E:121:ARG:NH1	2.23	0.91
1:A:95:PHE:HD2	1:A:96:THR:O	1.53	0.91
1:B:21:ARG:HD3	1:B:82:LEU:HD21	1.53	0.91
2:E:131:ASP:OD2	2:E:131:ASP:C	2.06	0.91
2:F:88:MET:SD	2:F:104:HIS:CD2	2.62	0.91
2:F:11:VAL:CG2	2:F:84:ALA:HB3	2.00	0.91
1:B:18:ASP:OD2	1:B:21:ARG:HG3	0.74	0.91
1:D:16:VAL:HG11	1:D:111:LEU:HD11	1.53	0.91
1:B:88:HIS:CE1	1:B:116:TYR:CE2	2.58	0.91
2:E:178:SER:O	2:E:180:ARG:N	2.04	0.91
2:F:28:ALA:CB	2:F:136:VAL:CG2	2.30	0.91

Continued on next page...

Continued from previous page...

Atom-1	Atom-2	Distance(Å)	Clash(Å)
1:D:55:LEU:HD22	1:D:55:LEU:C	1.91	0.91
2:E:165:TYR:O	2:E:165:TYR:HD1	1.54	0.91
2:F:122:LEU:C	2:F:123:LEU:CD2	2.40	0.90
2:E:153:ALA:N	2:E:156:GLN:NE2	2.18	0.90
2:E:40:ASN:ND2	2:E:173:TYR:CB	2.34	0.90
2:E:120:CYS:O	2:E:121:ARG:CZ	2.20	0.90
2:E:47:VAL:O	2:E:48:ASP:HB2	1.70	0.90
1:A:32:VAL:HG13	1:A:70:LYS:O	1.72	0.90
2:F:122:LEU:C	2:F:122:LEU:CD2	2.39	0.90
2:F:77:PHE:CZ	2:F:88:MET:SD	2.64	0.90
2:E:113:THR:O	2:E:114:TYR:HB3	1.71	0.90
2:E:159:LEU:HD12	2:E:162:ALA:CA	2.00	0.90
2:E:108:ASP:O	2:E:109:THR:CG2	2.19	0.90
2:E:103:ASP:O	2:E:119:SER:HB2	1.70	0.90
2:E:24:TRP:CH2	2:E:139:ARG:HD2	2.07	0.90
2:F:80:THR:O	2:F:81:GLU:O	1.89	0.89
2:F:20:PHE:CD2	2:F:45:PHE:CD1	2.60	0.89
2:F:118:TYR:CD2	2:F:159:LEU:HD21	2.08	0.89
2:E:127:GLY:O	2:E:128:THR:OG1	1.91	0.89
2:E:159:LEU:CB	2:E:162:ALA:HB2	2.02	0.89
2:E:77:PHE:CE1	2:E:88:MET:HG3	2.08	0.89
1:B:85:SER:OG	2:F:96:PHE:CA	2.20	0.89
2:F:41:ILE:O	2:F:41:ILE:CG2	2.19	0.89
2:E:123:LEU:CD1	2:E:128:THR:O	2.20	0.89
2:F:28:ALA:HB3	2:F:136:VAL:HG21	0.90	0.88
2:F:157:GLU:HA	2:F:157:GLU:OE2	1.09	0.88
2:E:52:GLN:NE2	2:E:77:PHE:O	2.05	0.88
2:E:43:ALA:O	2:E:44:GLU:HB2	1.71	0.88
2:F:104:HIS:C	2:F:117:GLN:NE2	2.25	0.88
2:F:129:CYS:SG	2:F:130:ALA:N	2.45	0.88
2:E:32:PRO:CG	2:E:133:TYR:CB	2.46	0.88
2:E:32:PRO:HG3	2:E:133:TYR:HB3	1.52	0.88
2:F:48:ASP:O	2:F:50:THR:N	2.06	0.88
1:B:23:SER:HB2	1:B:24:PRO:CD	2.04	0.88
1:D:73:ILE:HB	1:D:91:ALA:HB3	1.56	0.88
2:F:37:LEU:CD2	2:F:61:VAL:CG2	2.50	0.88
2:E:11:VAL:HB	2:E:84:ALA:CB	2.04	0.88
2:F:138:SER:HB2	2:F:144:LEU:HD21	1.56	0.88
2:F:74:VAL:HG12	2:F:91:TRP:O	1.74	0.88
2:E:24:TRP:CZ2	2:E:139:ARG:HD2	2.10	0.87
2:E:38:GLN:HB2	2:E:60:ARG:C	1.93	0.87
2:E:38:GLN:NE2	2:E:60:ARG:HH22	1.69	0.87

Continued on next page...

Continued from previous page...

Atom-1	Atom-2	Distance(Å)	Clash(Å)
1:A:41:TRP:HD1	1:A:41:TRP:H	1.20	0.87
1:D:16:VAL:CG1	1:D:111:LEU:CD1	2.52	0.87
1:D:54:GLU:CB	1:D:56:HIS:HE1	1.86	0.87
2:E:108:ASP:OD2	2:E:109:THR:N	2.06	0.87
1:A:16:VAL:HG11	1:A:111:LEU:HD11	1.56	0.87
2:F:26:ALA:HB2	2:F:41:ILE:CG2	2.02	0.87
2:F:40:ASN:OD1	2:F:170:HIS:CA	2.21	0.87
2:E:132:SER:O	2:E:133:TYR:HB3	1.72	0.87
2:E:66:ASN:ND2	2:E:66:ASN:N	2.19	0.87
1:D:70:LYS:HA	1:D:93:VAL:O	1.75	0.87
2:E:16:ASP:OD2	2:E:18:ALA:N	2.08	0.87
2:E:17:LYS:HB3	2:E:53:MET:SD	2.15	0.87
1:C:10:CYS:O	1:C:104:ARG:CD	2.23	0.87
2:F:104:HIS:CA	2:F:117:GLN:HE22	1.86	0.86
1:B:41:TRP:NE1	1:B:70:LYS:HE2	1.90	0.86
2:E:153:ALA:HA	2:E:156:GLN:NE2	1.90	0.86
2:F:112:ASP:O	2:F:113:THR:OG1	1.92	0.86
1:D:65:VAL:O	1:D:69:TYR:OH	1.91	0.86
2:E:4:CYS:SG	2:E:5:ALA:N	2.48	0.86
1:D:114:TYR:HH	2:E:95:SER:HB2	1.40	0.86
2:E:79:ASP:O	2:E:80:THR:HG22	1.74	0.86
2:F:5:ALA:CA	2:F:128:THR:CB	2.53	0.86
1:D:12:LEU:HD23	1:D:58:LEU:HB2	1.56	0.86
2:F:30:LYS:HD3	2:F:164:GLN:HE21	1.41	0.86
2:E:165:TYR:O	2:E:165:TYR:CD1	2.28	0.85
2:F:67:TRP:HD1	2:F:68:ASP:N	1.74	0.85
1:D:87:PHE:CD2	1:D:88:HIS:HD2	1.91	0.85
2:F:5:ALA:CA	2:F:128:THR:HB	2.05	0.85
2:E:113:THR:H	2:E:139:ARG:HD3	1.41	0.85
2:F:111:TYR:O	2:F:139:ARG:NE	2.09	0.85
2:E:13:GLU:O	2:E:15:PHE:N	2.10	0.85
1:D:26:ILE:O	1:D:27:ASN:HB2	1.73	0.85
2:E:9:PHE:HE2	2:E:160:CYS:CB	1.87	0.85
2:E:114:TYR:O	2:E:114:TYR:CD2	2.29	0.85
2:E:124:ASN:O	2:E:126:ASP:N	2.09	0.85
2:E:153:ALA:HA	2:E:156:GLN:HE22	1.42	0.85
2:E:152:VAL:HG12	2:E:152:VAL:O	1.76	0.84
2:E:36:PHE:HE2	3:E:1:RTL:C19	1.90	0.84
2:F:113:THR:H	2:F:139:ARG:HD3	1.41	0.84
2:F:158:GLU:OE2	2:F:158:GLU:N	2.10	0.84
2:E:26:ALA:HB1	2:E:168:ILE:HD13	1.57	0.84
1:C:97:ALA:HB1	1:C:98:ASN:ND2	1.90	0.84

Continued on next page...

Continued from previous page...

Atom-1	Atom-2	Distance(Å)	Clash(Å)
2:F:30:LYS:NZ	2:F:31:ASP:O	2.09	0.84
2:F:94:ALA:O	2:F:97:LEU:HD12	1.77	0.84
2:E:159:LEU:CD1	2:E:159:LEU:O	2.24	0.84
2:F:9:PHE:O	2:F:10:ARG:O	1.96	0.84
2:E:114:TYR:CD1	2:E:114:TYR:O	2.31	0.84
2:E:120:CYS:O	2:E:121:ARG:NH2	2.10	0.84
2:E:30:LYS:HB2	2:E:134:SER:H	1.43	0.84
2:E:135:PHE:CB	2:E:137:PHE:CE1	2.59	0.84
2:F:114:TYR:HD1	2:F:114:TYR:C	1.81	0.83
2:E:109:THR:HB	2:E:115:ALA:HB1	1.59	0.83
2:E:65:ASN:HB3	2:E:66:ASN:HD21	1.39	0.83
2:F:11:VAL:HG21	2:F:84:ALA:CB	2.07	0.83
2:E:152:VAL:O	2:E:156:GLN:CD	2.17	0.83
2:E:5:ALA:HA	2:E:129:CYS:N	1.92	0.83
2:E:114:TYR:N	2:E:138:SER:HA	1.92	0.83
2:E:159:LEU:HD13	2:E:159:LEU:O	1.77	0.83
1:B:66:GLU:CG	1:B:99:ASP:OD1	2.25	0.83
2:F:6:VAL:HG13	2:F:129:CYS:CB	2.09	0.83
1:D:12:LEU:HD21	1:D:58:LEU:CD1	2.08	0.83
2:E:118:TYR:CD1	2:E:119:SER:N	2.46	0.83
2:E:164:GLN:O	2:E:165:TYR:CD2	2.32	0.83
2:F:104:HIS:O	2:F:117:GLN:NE2	2.11	0.83
2:F:84:ALA:O	2:F:85:LYS:O	1.97	0.83
1:B:104:ARG:CB	1:B:122:VAL:HG21	2.09	0.82
2:E:70:CYS:HB2	2:E:182:LEU:HD12	1.58	0.82
2:F:30:LYS:HE3	2:F:30:LYS:C	2.00	0.82
2:F:65:ASN:ND2	2:F:65:ASN:C	2.30	0.82
2:E:107:VAL:HG11	2:E:159:LEU:HD23	1.61	0.82
1:A:26:ILE:CG1	1:A:50:SER:O	2.27	0.82
2:E:155:ARG:HG3	2:E:155:ARG:HH21	1.39	0.82
2:E:107:VAL:O	2:E:107:VAL:HG12	1.79	0.82
1:B:102:PRO:HB2	1:B:122:VAL:CG1	2.08	0.82
2:E:114:TYR:HA	2:E:137:PHE:O	1.79	0.82
2:E:152:VAL:O	2:E:156:GLN:NE2	2.13	0.82
1:C:84:ILE:HD11	2:F:67:TRP:CE3	2.14	0.81
2:E:105:TRP:O	2:E:106:ILE:HG13	1.80	0.81
2:E:5:ALA:HB1	2:E:128:THR:OG1	1.80	0.81
1:B:54:GLU:HB3	1:B:56:HIS:CE1	2.14	0.81
2:E:107:VAL:HG21	2:E:159:LEU:CD2	2.10	0.81
2:E:32:PRO:CB	2:E:132:SER:O	2.24	0.81
1:A:100:SER:HB2	2:F:91:TRP:CD2	2.15	0.81
1:A:16:VAL:CG1	1:A:111:LEU:HD11	2.10	0.81

Continued on next page...

Continued from previous page...

Atom-1	Atom-2	Distance(Å)	Clash(Å)
2:E:107:VAL:HG21	2:E:159:LEU:HD21	1.63	0.81
1:A:84:ILE:O	1:A:86:PRO:HD3	1.80	0.81
2:F:6:VAL:HG13	2:F:129:CYS:HB2	1.58	0.81
2:F:11:VAL:O	2:F:12:LYS:O	1.99	0.81
1:A:122:VAL:HG11	1:B:114:TYR:HE2	1.46	0.81
2:F:104:HIS:ND1	2:F:104:HIS:O	2.14	0.81
2:E:120:CYS:O	2:E:121:ARG:NH1	2.13	0.81
2:E:72:ASP:O	2:E:93:VAL:HG22	1.80	0.81
2:F:109:THR:OG1	2:F:115:ALA:HB2	1.81	0.81
1:A:122:VAL:CG1	1:B:114:TYR:HE2	1.93	0.81
1:D:33:PHE:O	1:D:69:TYR:HA	1.80	0.81
2:E:113:THR:HG23	2:E:138:SER:OG	1.81	0.80
1:A:79:TRP:CZ2	1:A:113:PRO:CD	2.63	0.80
2:E:122:LEU:C	2:E:123:LEU:HD22	2.02	0.80
2:E:173:TYR:O	2:E:173:TYR:HD2	1.64	0.80
2:E:159:LEU:HG	2:E:162:ALA:HB2	1.63	0.80
2:F:37:LEU:HD22	2:F:61:VAL:HG23	1.62	0.80
2:E:173:TYR:HE2	2:E:181:ASN:HB2	1.44	0.80
2:F:66:ASN:CG	2:F:67:TRP:N	2.26	0.80
2:F:67:TRP:CD1	2:F:68:ASP:N	2.50	0.80
1:A:13:MET:HE3	1:A:104:ARG:NH1	1.96	0.80
1:D:56:HIS:O	1:D:58:LEU:N	2.15	0.80
2:F:154:GLN:O	2:F:155:ARG:NH2	2.15	0.80
1:B:16:VAL:HB	1:B:25:ALA:HB3	1.63	0.80
2:F:79:ASP:O	2:F:80:THR:HG22	1.82	0.79
2:F:23:THR:O	2:F:139:ARG:NH1	2.15	0.79
2:E:73:MET:HE1	2:E:97:LEU:HD13	1.64	0.79
1:B:66:GLU:HG3	1:B:99:ASP:CG	2.03	0.79
2:F:5:ALA:HA	2:F:128:THR:HB	1.62	0.79
2:F:63:LEU:HD23	2:F:69:VAL:HG11	1.65	0.79
1:A:26:ILE:HD12	1:A:51:GLU:CA	2.01	0.79
1:A:7:GLU:HG2	1:A:8:SER:H	1.47	0.79
2:E:108:ASP:C	2:E:109:THR:HG22	2.02	0.79
2:E:80:THR:OG1	2:E:81:GLU:N	2.08	0.79
2:F:133:TYR:C	2:F:133:TYR:CD1	2.56	0.79
1:C:76:LYS:HB2	1:C:89:GLU:O	1.82	0.79
2:F:156:GLN:O	2:F:161:LEU:HD23	1.82	0.79
2:E:38:GLN:HG2	2:E:61:VAL:HA	1.63	0.79
2:F:88:MET:O	2:F:101:ASN:HA	1.82	0.78
1:D:66:GLU:HG2	1:D:103:ARG:HH12	1.48	0.78
2:F:85:LYS:CD	2:F:105:TRP:NE1	2.46	0.78
2:F:124:ASN:HB2	2:F:130:ALA:HB2	1.63	0.78

Continued on next page...

Continued from previous page...

Atom-1	Atom-2	Distance(Å)	Clash(Å)
2:E:157:GLU:HG3	2:E:157:GLU:O	1.81	0.78
2:F:156:GLN:CD	2:F:165:TYR:HE2	1.86	0.78
1:A:79:TRP:CH2	1:A:113:PRO:CD	2.66	0.78
1:B:13:MET:CG	1:B:56:HIS:CD2	2.63	0.78
2:F:48:ASP:O	2:F:50:THR:HG23	1.84	0.78
2:E:29:LYS:CB	2:E:29:LYS:HZ3	1.96	0.78
1:B:88:HIS:HE1	1:B:116:TYR:CD2	1.98	0.78
1:B:21:ARG:C	1:C:114:TYR:CD1	2.57	0.78
2:F:133:TYR:HD1	2:F:133:TYR:C	1.85	0.78
2:F:81:GLU:O	2:F:82:ASP:O	2.01	0.78
2:E:69:VAL:HG23	2:E:182:LEU:HD21	1.64	0.78
2:F:156:GLN:HG3	2:F:161:LEU:HD12	1.65	0.78
2:E:106:ILE:O	2:E:106:ILE:HG22	1.83	0.78
2:E:104:HIS:CE1	2:E:117:GLN:HE21	2.02	0.78
2:E:66:ASN:N	2:E:66:ASN:HD22	1.77	0.78
1:A:64:PHE:HE1	1:A:69:TYR:CD2	2.02	0.78
2:E:5:ALA:HA	2:E:129:CYS:H	1.49	0.78
2:E:175:ASP:HB3	2:E:180:ARG:CD	2.13	0.78
2:F:107:VAL:HG21	2:F:159:LEU:HD23	1.65	0.77
2:F:122:LEU:HD23	2:F:123:LEU:CA	2.13	0.77
2:E:24:TRP:NE1	2:E:139:ARG:NH1	2.33	0.77
2:F:118:TYR:CD1	2:F:119:SER:N	2.52	0.77
1:D:55:LEU:CD2	1:D:55:LEU:C	2.53	0.77
1:B:90:HIS:NE2	1:B:92:GLU:OE2	2.17	0.77
2:F:109:THR:O	2:F:109:THR:CG2	2.32	0.77
2:F:38:GLN:NE2	2:F:62:ARG:NH1	2.32	0.77
2:F:159:LEU:O	2:F:159:LEU:HD12	1.85	0.77
2:F:29:LYS:HG3	2:F:168:ILE:CG2	2.13	0.77
2:F:29:LYS:H	2:F:165:TYR:HD1	1.30	0.77
2:F:73:MET:CE	2:F:97:LEU:HB3	2.15	0.77
2:F:89:LYS:O	2:F:89:LYS:CG	2.32	0.77
2:F:104:HIS:O	2:F:105:TRP:O	2.03	0.77
2:F:114:TYR:CD1	2:F:114:TYR:C	2.52	0.77
2:E:66:ASN:H	2:E:66:ASN:HD22	1.33	0.77
1:A:7:GLU:HG2	1:A:8:SER:N	1.99	0.77
2:F:124:ASN:ND2	2:F:125:LEU:HG	2.00	0.77
2:E:82:ASP:O	2:E:84:ALA:N	2.18	0.77
2:F:109:THR:O	2:F:109:THR:HG23	1.85	0.76
2:E:16:ASP:C	2:E:16:ASP:OD2	2.20	0.76
2:E:19:ARG:O	2:E:111:TYR:CG	2.38	0.76
2:F:171:ASN:O	2:F:172:GLY:C	2.22	0.76
2:F:103:ASP:H	2:F:121:ARG:HD3	1.50	0.76

Continued on next page...

Continued from previous page...

Atom-1	Atom-2	Distance(Å)	Clash(Å)
1:B:54:GLU:HB3	1:B:56:HIS:HE1	1.49	0.76
2:E:39:ASP:CB	2:E:169:VAL:HG13	2.16	0.76
1:D:76:LYS:HA	1:D:86:PRO:HG3	1.66	0.76
2:E:47:VAL:HG12	2:E:48:ASP:H	1.49	0.76
1:C:98:ASN:N	1:C:98:ASN:ND2	2.33	0.76
2:F:168:ILE:O	2:F:170:HIS:NE2	2.19	0.76
2:E:15:PHE:CE1	2:E:17:LYS:HA	2.19	0.76
1:A:117:SER:HB3	1:B:117:SER:CB	2.15	0.76
2:F:104:HIS:HA	2:F:117:GLN:HE22	1.51	0.76
1:D:69:TYR:CD1	1:D:69:TYR:N	2.53	0.76
2:F:94:ALA:O	2:F:95:SER:O	2.04	0.76
1:B:18:ASP:OD1	1:B:21:ARG:CB	2.34	0.75
2:E:28:ALA:HB1	2:E:165:TYR:CB	2.17	0.75
2:E:63:LEU:HD12	2:E:64:LEU:N	2.01	0.75
2:E:65:ASN:CB	2:E:66:ASN:ND2	2.48	0.75
2:E:75:GLY:HA3	2:E:88:MET:SD	2.26	0.75
2:F:168:ILE:HD13	2:F:168:ILE:H	1.51	0.75
2:E:120:CYS:C	2:E:121:ARG:HH12	1.88	0.75
2:E:76:THR:O	2:E:88:MET:HG2	1.87	0.75
2:E:123:LEU:N	2:E:123:LEU:CD2	2.46	0.75
1:B:18:ASP:OD2	1:B:21:ARG:CD	2.35	0.75
1:B:23:SER:HB2	1:B:24:PRO:HD2	1.67	0.75
2:E:15:PHE:CE2	2:E:106:ILE:HD12	2.20	0.75
2:F:28:ALA:HB2	2:F:136:VAL:HG21	1.68	0.75
2:F:11:VAL:HG23	2:F:84:ALA:HB2	1.68	0.75
2:E:113:THR:HA	2:E:139:ARG:H	1.52	0.75
1:D:25:ALA:HB1	1:D:28:VAL:HG21	1.67	0.75
1:C:84:ILE:HD11	2:F:67:TRP:CZ3	2.22	0.75
2:F:66:ASN:ND2	2:F:67:TRP:H	1.85	0.75
2:F:77:PHE:CE2	2:F:104:HIS:HD2	2.03	0.75
2:F:20:PHE:CD2	2:F:45:PHE:HD1	2.04	0.75
1:D:16:VAL:HG11	1:D:111:LEU:CD1	2.15	0.74
2:F:27:MET:CE	2:F:144:LEU:HD11	2.16	0.74
2:F:27:MET:HE1	2:F:144:LEU:HD11	1.67	0.74
2:F:30:LYS:HE3	2:F:31:ASP:CA	2.17	0.74
1:B:22:GLY:O	1:D:121:VAL:HA	1.87	0.74
2:F:156:GLN:CG	2:F:161:LEU:HG	2.16	0.74
2:F:30:LYS:HE3	2:F:31:ASP:H	1.49	0.74
2:F:85:LYS:CD	2:F:105:TRP:CD1	2.60	0.74
2:F:169:VAL:C	2:F:170:HIS:CG	2.57	0.74
2:E:118:TYR:CE1	2:E:132:SER:HB2	2.22	0.74
2:E:137:PHE:CD1	2:E:137:PHE:N	2.54	0.74

Continued on next page...

Continued from previous page...

Atom-1	Atom-2	Distance(Å)	Clash(Å)
1:A:41:TRP:CD1	1:A:41:TRP:N	2.53	0.74
2:F:85:LYS:CD	2:F:105:TRP:HE1	2.01	0.74
2:F:122:LEU:HD22	2:F:130:ALA:HB3	1.70	0.74
2:F:160:CYS:CA	2:F:161:LEU:HD23	2.18	0.73
2:F:156:GLN:HA	2:F:161:LEU:HD21	1.69	0.73
2:E:107:VAL:O	2:E:108:ASP:HB2	1.88	0.73
2:E:138:SER:CB	2:E:144:LEU:HD22	2.19	0.73
2:E:36:PHE:HE2	3:E:1:RTL:H193	1.53	0.73
1:D:25:ALA:O	1:D:28:VAL:HG23	1.88	0.73
2:F:29:LYS:N	2:F:165:TYR:HD1	1.86	0.73
1:A:64:PHE:CE1	1:A:69:TYR:CZ	2.75	0.73
2:F:48:ASP:O	2:F:50:THR:CG2	2.36	0.73
2:E:38:GLN:HE21	2:E:60:ARG:HH21	1.31	0.73
2:E:82:ASP:OD1	2:E:82:ASP:N	2.21	0.73
2:F:74:VAL:CG1	2:F:91:TRP:O	2.35	0.73
1:A:16:VAL:HG12	1:A:25:ALA:HB2	1.71	0.73
2:F:20:PHE:CD2	2:F:45:PHE:CE1	2.76	0.73
2:E:156:GLN:HG2	2:E:163:ALA:CB	2.18	0.73
2:F:29:LYS:N	2:F:165:TYR:CD1	2.55	0.73
2:E:28:ALA:CB	2:E:165:TYR:HB3	2.17	0.73
1:A:16:VAL:HG12	1:A:25:ALA:CB	2.19	0.73
2:F:5:ALA:CA	2:F:128:THR:OG1	2.27	0.72
1:B:98:ASN:C	1:B:103:ARG:NH1	2.43	0.72
2:F:57:ALA:HB2	3:F:2:RTL:H173	1.70	0.72
2:E:134:SER:HB3	2:E:162:ALA:O	1.88	0.72
2:F:38:GLN:HE22	2:F:62:ARG:NH1	1.88	0.72
2:E:135:PHE:CB	2:E:137:PHE:HE1	2.01	0.72
1:B:22:GLY:HA3	1:C:114:TYR:CG	2.24	0.72
2:F:123:LEU:HD13	2:F:129:CYS:H	1.54	0.72
2:F:156:GLN:O	2:F:161:LEU:CD2	2.38	0.72
2:E:85:LYS:HG2	2:E:105:TRP:CD1	2.24	0.72
2:E:25:TYR:CE2	2:E:141:PRO:HD3	2.24	0.72
2:E:70:CYS:H	2:E:182:LEU:HD12	1.54	0.72
2:F:85:LYS:HD3	2:F:105:TRP:HE1	1.48	0.72
2:E:4:CYS:N	2:E:129:CYS:O	2.22	0.72
1:B:13:MET:SD	1:B:56:HIS:NE2	2.62	0.72
1:C:64:PHE:HE1	1:C:69:TYR:CD2	2.06	0.72
1:D:66:GLU:CA	1:D:97:ALA:O	2.38	0.72
2:F:171:ASN:O	2:F:172:GLY:O	2.08	0.72
1:B:121:VAL:CG1	1:B:122:VAL:N	2.33	0.72
1:A:16:VAL:HB	1:A:25:ALA:HB3	1.71	0.72
1:D:102:PRO:HG2	1:D:122:VAL:HG12	1.71	0.72

Continued on next page...

Continued from previous page...

Atom-1	Atom-2	Distance(Å)	Clash(Å)
2:F:27:MET:N	2:F:168:ILE:CD1	2.53	0.72
1:C:11:PRO:HA	1:C:104:ARG:HG2	1.71	0.72
2:F:36:PHE:O	2:F:61:VAL:CG2	2.38	0.71
1:A:97:ALA:O	1:A:99:ASP:N	2.22	0.71
2:E:73:MET:CE	2:E:97:LEU:HD13	2.20	0.71
1:B:16:VAL:O	1:B:17:LEU:HD23	1.90	0.71
2:F:38:GLN:NE2	2:F:62:ARG:CZ	2.53	0.71
2:E:11:VAL:HB	2:E:84:ALA:HB1	1.71	0.71
1:A:7:GLU:OE2	1:A:9:LYS:HB2	1.90	0.71
2:F:122:LEU:CD2	2:F:123:LEU:N	2.35	0.71
2:F:53:MET:CE	2:F:86:PHE:CE2	2.73	0.71
2:E:155:ARG:HG3	2:E:155:ARG:NH2	2.00	0.71
2:F:29:LYS:C	2:F:165:TYR:HD1	1.93	0.71
1:B:41:TRP:CE2	1:B:70:LYS:CE	2.74	0.71
1:D:73:ILE:HD12	1:D:91:ALA:O	1.91	0.71
1:D:121:VAL:HG23	1:D:121:VAL:O	1.91	0.71
2:F:122:LEU:O	2:F:123:LEU:HD22	1.89	0.71
1:B:88:HIS:CE1	1:B:116:TYR:HD2	2.06	0.71
1:D:66:GLU:OE2	1:D:99:ASP:CB	2.39	0.71
1:C:70:LYS:HD2	1:C:92:GLU:OE1	1.91	0.71
2:F:12:LYS:HE2	2:F:109:THR:O	1.90	0.70
1:D:12:LEU:HD21	1:D:58:LEU:HD12	1.73	0.70
2:E:103:ASP:HB2	2:E:121:ARG:NH2	2.06	0.70
2:E:15:PHE:CD1	2:E:15:PHE:C	2.64	0.70
1:D:84:ILE:O	1:D:86:PRO:HD3	1.90	0.70
2:E:133:TYR:CD1	2:E:133:TYR:C	2.63	0.70
1:D:13:MET:SD	1:D:54:GLU:CG	2.79	0.70
2:F:52:GLN:OE1	2:F:77:PHE:O	2.09	0.70
2:E:6:VAL:H	2:E:128:THR:CB	1.96	0.70
2:E:107:VAL:CG1	2:E:159:LEU:HD23	2.21	0.70
2:E:125:LEU:O	2:E:127:GLY:N	2.25	0.70
1:B:63:GLN:HA	1:B:63:GLN:OE1	1.91	0.70
2:E:92:GLY:C	2:E:94:ALA:H	1.94	0.70
1:A:19:ALA:CB	1:A:111:LEU:O	2.40	0.70
2:E:131:ASP:OD2	2:E:132:SER:N	2.25	0.70
2:E:15:PHE:HE1	2:E:17:LYS:HA	1.57	0.70
1:B:25:ALA:O	1:B:28:VAL:HG23	1.91	0.70
2:F:105:TRP:O	2:F:117:GLN:NE2	2.24	0.70
2:E:92:GLY:C	2:E:94:ALA:N	2.38	0.70
1:D:12:LEU:CG	1:D:12:LEU:O	2.25	0.70
2:E:77:PHE:CD1	2:E:88:MET:HG3	2.27	0.69
2:E:139:ARG:HH11	2:E:139:ARG:CG	2.05	0.69

Continued on next page...

Continued from previous page...

Atom-1	Atom-2	Distance(Å)	Clash(Å)
1:D:76:LYS:CG	1:D:80:LYS:HE2	2.22	0.69
1:B:17:LEU:HB2	1:B:110:LEU:HD13	1.74	0.69
2:F:73:MET:HE3	2:F:97:LEU:HB3	1.74	0.69
2:E:22:GLY:O	2:E:24:TRP:CD1	2.45	0.69
2:E:69:VAL:CA	2:E:182:LEU:HG	2.18	0.69
1:B:84:ILE:HG23	2:F:96:PHE:HB2	1.74	0.69
1:D:12:LEU:HD21	1:D:58:LEU:HD13	1.73	0.69
1:B:18:ASP:OD1	1:B:21:ARG:N	2.26	0.69
2:F:38:GLN:CA	2:F:38:GLN:OE1	2.38	0.69
2:E:127:GLY:C	2:E:128:THR:OG1	2.29	0.69
2:E:45:PHE:CE2	2:E:55:ALA:HB1	2.28	0.69
2:F:5:ALA:HA	2:F:128:THR:HG1	1.53	0.69
1:A:115:SER:HB3	1:D:19:ALA:HB1	1.72	0.69
2:E:24:TRP:CZ2	2:E:139:ARG:CD	2.76	0.69
2:E:39:ASP:HB2	2:E:169:VAL:HG13	1.74	0.69
1:A:41:TRP:HD1	1:A:41:TRP:N	1.91	0.69
1:D:76:LYS:HG3	1:D:80:LYS:HE2	1.74	0.69
1:D:71:VAL:O	1:D:93:VAL:HG23	1.91	0.69
2:F:36:PHE:O	2:F:61:VAL:HG22	1.93	0.69
2:E:164:GLN:C	2:E:165:TYR:CG	2.66	0.69
2:E:182:LEU:CD2	2:E:183:LEU:N	2.44	0.69
2:F:85:LYS:HD3	2:F:105:TRP:HD1	1.49	0.69
1:C:115:SER:HB3	1:D:119:THR:OG1	1.91	0.69
2:E:138:SER:CB	2:E:144:LEU:CD2	2.71	0.69
1:D:66:GLU:OE2	1:D:99:ASP:HB2	1.93	0.69
1:B:90:HIS:CD2	1:B:92:GLU:HG3	2.28	0.68
2:F:148:ALA:O	2:F:151:ILE:N	2.25	0.68
2:E:125:LEU:C	2:E:127:GLY:H	1.97	0.68
1:B:10:CYS:N	1:B:11:PRO:CD	2.56	0.68
1:C:21:ARG:O	1:C:22:GLY:O	2.11	0.68
2:F:24:TRP:CZ2	2:F:111:TYR:O	2.47	0.68
2:F:140:ASP:OD2	2:F:141:PRO:HD2	1.93	0.68
2:F:173:TYR:CD1	2:F:173:TYR:O	2.39	0.68
1:B:34:ARG:HH21	1:B:65:VAL:HG23	1.56	0.68
2:E:89:LYS:HB3	2:E:101:ASN:OD1	1.93	0.68
1:B:19:ALA:O	1:C:114:TYR:HB2	1.93	0.68
2:F:70:CYS:SG	2:F:173:TYR:O	2.52	0.68
1:A:95:PHE:CD2	1:A:96:THR:O	2.42	0.68
1:A:16:VAL:CG1	1:A:111:LEU:CD1	2.71	0.68
2:F:89:LYS:O	2:F:89:LYS:HG3	1.93	0.68
2:F:5:ALA:C	2:F:128:THR:CB	2.60	0.68
1:B:104:ARG:H	1:B:122:VAL:HG11	1.56	0.68

Continued on next page...

Continued from previous page...

Atom-1	Atom-2	Distance(Å)	Clash(Å)
2:E:110:ASP:C	2:E:112:ASP:H	1.97	0.68
2:E:118:TYR:CG	2:E:119:SER:N	2.62	0.68
1:A:114:TYR:CD2	1:D:22:GLY:HA3	2.29	0.68
1:A:18:ASP:CG	1:A:21:ARG:HD3	2.14	0.68
1:D:34:ARG:HH11	1:D:34:ARG:HG2	1.58	0.68
1:C:30:VAL:HG21	1:C:55:LEU:HD12	1.76	0.68
2:F:38:GLN:N	2:F:60:ARG:O	2.27	0.68
2:F:80:THR:O	2:F:81:GLU:C	2.29	0.68
2:E:30:LYS:HB2	2:E:134:SER:N	2.09	0.67
2:F:66:ASN:O	2:F:67:TRP:C	2.32	0.67
2:F:26:ALA:C	2:F:168:ILE:HD11	2.13	0.67
2:F:53:MET:CE	2:F:86:PHE:CD2	2.77	0.67
2:E:151:ILE:C	2:E:153:ALA:H	1.97	0.67
2:E:171:ASN:O	2:E:172:GLY:C	2.33	0.67
1:B:98:ASN:C	1:B:103:ARG:HH11	1.97	0.67
2:F:167:LEU:HD22	2:F:167:LEU:O	1.94	0.67
2:F:65:ASN:HD22	2:F:66:ASN:N	1.92	0.67
2:F:6:VAL:N	2:F:128:THR:HB	2.09	0.67
2:F:85:LYS:O	2:F:86:PHE:CG	2.48	0.67
1:B:104:ARG:CA	1:B:122:VAL:HG21	2.24	0.67
1:D:66:GLU:CG	1:D:99:ASP:H	2.07	0.67
2:F:150:LYS:O	2:F:150:LYS:HG3	1.95	0.67
2:F:155:ARG:O	2:F:157:GLU:N	2.27	0.67
2:E:118:TYR:HE1	2:E:132:SER:HB2	1.60	0.67
2:E:179:GLU:HG3	2:E:182:LEU:O	1.93	0.67
2:F:78:THR:O	2:F:87:LYS:HE3	1.95	0.67
2:E:137:PHE:HD1	2:E:137:PHE:N	1.93	0.67
1:D:13:MET:HG3	1:D:56:HIS:CG	2.30	0.67
2:E:15:PHE:CE2	2:E:106:ILE:CD1	2.78	0.67
2:E:36:PHE:CE2	3:E:1:RTL:C19	2.78	0.67
1:D:90:HIS:O	1:D:90:HIS:CD2	2.48	0.67
2:F:147:GLU:O	2:F:148:ALA:O	2.13	0.67
2:F:29:LYS:HG3	2:F:168:ILE:HG23	1.75	0.67
2:F:67:TRP:HD1	2:F:68:ASP:H	1.41	0.67
1:A:16:VAL:CG1	1:A:25:ALA:CB	2.73	0.67
2:F:25:TYR:O	2:F:137:PHE:HA	1.95	0.67
2:E:182:LEU:CD2	2:E:183:LEU:HG	2.23	0.67
1:A:87:PHE:CZ	1:B:95:PHE:CG	2.82	0.67
2:F:113:THR:O	2:F:138:SER:HA	1.94	0.66
2:F:148:ALA:O	2:F:150:LYS:N	2.28	0.66
2:F:11:VAL:O	2:F:12:LYS:C	2.31	0.66
2:E:108:ASP:O	2:E:109:THR:CB	2.44	0.66

Continued on next page...

Continued from previous page...

Atom-1	Atom-2	Distance(Å)	Clash(Å)
2:F:168:ILE:HG12	2:F:170:HIS:CE1	2.31	0.66
2:F:98:GLN:HG2	2:F:98:GLN:O	1.93	0.66
1:B:18:ASP:CG	1:B:21:ARG:CG	2.34	0.66
2:F:53:MET:HE1	2:F:86:PHE:CE2	2.30	0.66
2:E:22:GLY:O	2:E:139:ARG:NH1	2.27	0.66
1:B:40:THR:CG2	1:B:41:TRP:N	2.58	0.66
1:B:18:ASP:OD1	1:B:21:ARG:CA	2.43	0.66
2:F:95:SER:C	2:F:97:LEU:H	1.95	0.66
2:E:36:PHE:CE2	3:E:1:RTL:H193	2.30	0.66
2:F:20:PHE:HD2	2:F:45:PHE:HD1	1.41	0.66
1:D:16:VAL:C	1:D:17:LEU:HD23	2.16	0.66
2:E:76:THR:O	2:E:88:MET:CG	2.44	0.66
1:C:100:SER:HB2	2:E:91:TRP:CG	2.31	0.66
2:F:30:LYS:O	2:F:32:PRO:HD3	1.96	0.65
2:E:38:GLN:CG	2:E:60:ARG:O	2.43	0.65
1:C:14:VAL:HG12	1:C:14:VAL:O	1.96	0.65
2:E:33:GLU:O	2:E:33:GLU:HG3	1.95	0.65
2:F:73:MET:HG3	3:F:2:RTL:H10	1.78	0.65
2:F:73:MET:HE1	2:F:97:LEU:HD22	1.78	0.65
1:A:32:VAL:CG1	1:A:70:LYS:O	2.42	0.65
1:A:52:SER:OG	1:A:54:GLU:HB2	1.95	0.65
2:E:4:CYS:O	2:E:129:CYS:O	2.15	0.65
2:E:168:ILE:O	2:E:168:ILE:HG22	1.96	0.65
2:F:104:HIS:C	2:F:117:GLN:HE22	1.93	0.65
2:F:19:ARG:HD2	2:F:111:TYR:CE2	2.32	0.65
2:E:114:TYR:CD1	2:E:152:VAL:CG2	2.80	0.65
2:E:13:GLU:O	2:E:14:ASN:C	2.35	0.65
2:F:53:MET:HE1	2:F:86:PHE:CD2	2.32	0.65
1:C:97:ALA:HB1	1:C:98:ASN:HD21	1.61	0.65
2:F:6:VAL:HG23	2:F:7:SER:N	2.10	0.65
2:E:47:VAL:O	2:E:48:ASP:CB	2.45	0.65
2:F:14:ASN:O	2:F:15:PHE:C	2.36	0.65
2:F:19:ARG:HD2	2:F:111:TYR:CD2	2.32	0.64
1:D:12:LEU:CD2	1:D:58:LEU:HD12	2.27	0.64
2:F:30:LYS:CE	2:F:31:ASP:H	2.04	0.64
1:A:32:VAL:O	1:A:44:PHE:N	2.28	0.64
2:F:114:TYR:HD2	2:F:148:ALA:CB	2.10	0.64
1:B:25:ALA:HB1	1:B:28:VAL:HG21	1.80	0.64
2:E:70:CYS:H	2:E:182:LEU:CG	2.10	0.64
1:D:26:ILE:HG23	1:D:50:SER:O	1.97	0.64
1:B:104:ARG:O	1:B:122:VAL:HB	1.96	0.64
1:B:58:LEU:O	1:B:59:THR:HB	1.97	0.64

Continued on next page...

Continued from previous page...

Atom-1	Atom-2	Distance(Å)	Clash(Å)
1:C:38:ASP:OD1	1:C:40:THR:HG21	1.97	0.64
2:F:160:CYS:C	2:F:161:LEU:HD22	1.88	0.64
1:D:12:LEU:HD23	1:D:58:LEU:CB	2.26	0.64
1:D:10:CYS:HB3	1:D:56:HIS:HB3	1.79	0.64
2:F:107:VAL:HG21	2:F:159:LEU:CD2	2.28	0.64
1:D:87:PHE:CE2	1:D:88:HIS:CD2	2.84	0.64
2:F:14:ASN:C	2:F:15:PHE:O	2.33	0.64
2:F:45:PHE:CE2	2:F:55:ALA:HB1	2.32	0.64
2:E:57:ALA:HB3	3:E:1:RTL:H41	1.80	0.64
1:B:34:ARG:HB2	1:B:69:TYR:CE2	2.32	0.64
2:F:155:ARG:C	2:F:157:GLU:H	1.99	0.64
2:F:155:ARG:O	2:F:158:GLU:N	2.31	0.64
2:E:70:CYS:N	2:E:182:LEU:CD1	2.57	0.64
1:D:13:MET:HG3	1:D:56:HIS:CE1	2.33	0.64
2:F:118:TYR:HD2	2:F:159:LEU:HD21	1.62	0.64
1:A:64:PHE:CD1	1:A:69:TYR:CE2	2.84	0.64
2:F:20:PHE:CD2	2:F:20:PHE:O	2.52	0.63
2:F:161:LEU:O	2:F:164:GLN:CB	2.46	0.63
2:F:81:GLU:O	2:F:82:ASP:C	2.36	0.63
1:D:54:GLU:OE1	1:D:56:HIS:CE1	2.51	0.63
1:A:117:SER:CB	1:B:117:SER:HB3	2.20	0.63
2:F:36:PHE:CE1	2:F:135:PHE:CZ	2.86	0.63
2:F:29:LYS:C	2:F:165:TYR:CD1	2.71	0.63
2:E:6:VAL:HG13	2:E:129:CYS:CB	2.09	0.63
1:D:79:TRP:HD1	1:D:86:PRO:HB3	1.64	0.63
1:D:13:MET:HG3	1:D:56:HIS:CD2	2.33	0.63
1:D:16:VAL:HB	1:D:25:ALA:HB3	1.80	0.63
1:C:36:ALA:HB2	1:C:42:GLU:CG	2.25	0.63
1:C:21:ARG:O	1:C:22:GLY:C	2.37	0.63
2:E:113:THR:N	2:E:139:ARG:HD3	2.13	0.63
2:E:166:ARG:HG3	2:E:167:LEU:N	2.14	0.63
1:B:121:VAL:HA	1:D:22:GLY:O	1.98	0.63
1:D:87:PHE:CD2	1:D:88:HIS:NE2	2.65	0.63
1:A:19:ALA:HB3	1:A:111:LEU:O	1.97	0.63
1:B:98:ASN:O	1:B:103:ARG:NH1	2.29	0.63
1:A:100:SER:O	1:A:103:ARG:NH2	2.32	0.63
2:F:118:TYR:HD1	2:F:119:SER:H	1.44	0.63
2:E:24:TRP:CZ2	2:E:139:ARG:NE	2.66	0.63
2:F:70:CYS:SG	2:F:173:TYR:CD1	2.92	0.63
1:A:19:ALA:CB	1:A:112:SER:OG	2.47	0.63
1:B:102:PRO:HD3	1:B:124:ASN:HA	1.79	0.63
2:F:161:LEU:HD12	2:F:165:TYR:CE2	2.33	0.62

Continued on next page...

Continued from previous page...

Atom-1	Atom-2	Distance(Å)	Clash(Å)
2:E:135:PHE:HB2	2:E:137:PHE:HE1	1.64	0.62
2:E:9:PHE:CZ	2:E:160:CYS:HB3	2.32	0.62
2:F:29:LYS:HD3	2:F:41:ILE:CD1	2.29	0.62
1:D:16:VAL:HG13	1:D:111:LEU:HD11	1.80	0.62
2:E:124:ASN:O	2:E:125:LEU:C	2.37	0.62
2:E:138:SER:OG	2:E:144:LEU:CD2	2.44	0.62
1:A:12:LEU:HD12	1:A:13:MET:H	1.64	0.62
1:D:13:MET:SD	1:D:56:HIS:NE2	2.73	0.62
1:C:115:SER:HB2	1:D:119:THR:CB	2.28	0.62
2:F:9:PHE:O	2:F:10:ARG:C	2.36	0.62
2:E:72:ASP:HB3	2:E:93:VAL:HG21	1.80	0.62
2:F:109:THR:OG1	2:F:115:ALA:CB	2.48	0.62
2:F:113:THR:N	2:F:139:ARG:HD3	2.11	0.62
2:E:92:GLY:O	2:E:94:ALA:N	2.31	0.62
1:D:102:PRO:HG2	1:D:122:VAL:CG1	2.29	0.62
2:E:109:THR:OG1	2:E:110:ASP:N	2.32	0.62
2:F:114:TYR:HD2	2:F:148:ALA:HB1	1.64	0.62
2:F:17:LYS:HZ3	2:F:53:MET:H	1.46	0.62
1:B:84:ILE:CG2	2:F:96:PHE:HB2	2.29	0.62
2:E:135:PHE:HB2	2:E:137:PHE:CE1	2.34	0.62
1:B:71:VAL:HB	1:B:93:VAL:HB	1.81	0.62
2:F:155:ARG:C	2:F:157:GLU:N	2.52	0.61
2:F:98:GLN:HB3	3:F:2:RTL:H151	1.82	0.61
1:A:33:PHE:HD2	1:A:43:PRO:HA	1.65	0.61
1:C:76:LYS:HG2	1:C:76:LYS:O	1.99	0.61
2:E:137:PHE:HD1	2:E:137:PHE:H	1.48	0.61
2:E:39:ASP:CG	2:E:60:ARG:NH1	2.52	0.61
1:B:88:HIS:CE1	1:B:116:TYR:HE2	2.19	0.61
1:D:70:LYS:CD	1:D:92:GLU:OE1	2.43	0.61
2:F:37:LEU:CA	2:F:61:VAL:CG2	2.56	0.61
2:E:12:LYS:CG	2:E:15:PHE:HB2	2.29	0.61
2:E:39:ASP:HB2	2:E:169:VAL:O	2.00	0.61
1:D:33:PHE:O	1:D:69:TYR:CA	2.49	0.61
1:C:97:ALA:CB	1:C:98:ASN:ND2	2.62	0.61
2:E:25:TYR:CD2	2:E:141:PRO:HD3	2.35	0.61
1:C:16:VAL:HB	1:C:25:ALA:HB3	1.82	0.61
2:E:4:CYS:SG	2:E:129:CYS:HB3	2.41	0.61
1:B:20:VAL:HA	1:C:113:PRO:HD2	1.81	0.61
2:E:29:LYS:HZ3	2:E:29:LYS:HB3	1.64	0.61
1:D:21:ARG:HD2	2:E:65:ASN:HD21	1.64	0.61
2:E:67:TRP:CG	2:E:67:TRP:O	2.51	0.61
1:A:102:PRO:C	1:A:103:ARG:HG2	2.21	0.61

Continued on next page...

Continued from previous page...

Atom-1	Atom-2	Distance(Å)	Clash(Å)
1:A:16:VAL:CG1	1:A:25:ALA:HB3	2.31	0.61
2:F:162:ALA:O	2:F:163:ALA:HB3	2.01	0.61
2:E:155:ARG:HH21	2:E:155:ARG:HG2	1.66	0.61
1:C:30:VAL:CG2	1:C:55:LEU:HD12	2.31	0.61
1:A:55:LEU:HD13	1:A:58:LEU:HD11	1.82	0.61
1:C:79:TRP:HZ2	1:C:112:SER:C	2.04	0.61
2:E:32:PRO:CG	2:E:133:TYR:HB3	2.24	0.61
2:E:138:SER:HB2	2:E:144:LEU:CD2	2.31	0.61
2:E:17:LYS:NZ	2:E:51:GLY:O	2.33	0.61
1:A:70:LYS:HD3	1:A:94:VAL:HG22	1.82	0.61
1:A:55:LEU:HD22	1:A:58:LEU:HD21	1.81	0.61
1:B:23:SER:CB	1:B:24:PRO:CD	2.76	0.60
2:F:123:LEU:HD13	2:F:129:CYS:N	2.15	0.60
2:F:156:GLN:CD	2:F:165:TYR:CE2	2.71	0.60
1:C:100:SER:HB2	2:E:91:TRP:CD2	2.37	0.60
2:E:114:TYR:HD1	2:E:152:VAL:CG2	2.13	0.60
2:E:4:CYS:C	2:E:129:CYS:O	2.40	0.60
1:B:88:HIS:ND1	1:B:116:TYR:CD2	2.69	0.60
1:B:18:ASP:OD1	1:B:21:ARG:CG	2.49	0.60
2:E:79:ASP:O	2:E:80:THR:CG2	2.48	0.60
2:F:42:VAL:HG12	2:F:43:ALA:N	2.16	0.60
2:E:30:LYS:HD2	2:E:164:GLN:HB3	1.84	0.60
2:E:36:PHE:HE2	3:E:1:RTL:H191	1.65	0.60
2:F:110:ASP:O	2:F:111:TYR:HB2	2.02	0.60
2:F:114:TYR:HD1	2:F:114:TYR:O	1.85	0.60
2:F:138:SER:HB2	2:F:144:LEU:CD2	2.29	0.60
2:E:108:ASP:CG	2:E:109:THR:H	2.05	0.60
2:E:125:LEU:C	2:E:127:GLY:N	2.52	0.60
1:D:69:TYR:HD1	1:D:69:TYR:N	2.00	0.60
1:A:33:PHE:CD2	1:A:43:PRO:HA	2.37	0.60
1:D:98:ASN:C	1:D:103:ARG:HH11	2.03	0.60
1:B:41:TRP:CH2	1:B:70:LYS:HB2	2.37	0.60
1:A:122:VAL:CG1	1:B:114:TYR:CE2	2.80	0.60
1:A:16:VAL:CB	1:A:25:ALA:HB3	2.31	0.60
2:E:157:GLU:O	2:E:157:GLU:CG	2.49	0.60
2:F:167:LEU:HD22	2:F:167:LEU:C	2.21	0.60
2:F:150:LYS:O	2:F:150:LYS:CG	2.49	0.59
2:F:36:PHE:O	2:F:61:VAL:CG1	2.50	0.59
1:D:16:VAL:CG1	1:D:111:LEU:HD12	2.31	0.59
2:F:6:VAL:HG13	2:F:128:THR:C	2.22	0.59
2:F:4:CYS:O	2:F:5:ALA:CB	2.49	0.59
2:F:79:ASP:C	2:F:80:THR:CG2	2.70	0.59

Continued on next page...

Continued from previous page...

Atom-1	Atom-2	Distance(Å)	Clash(Å)
2:F:156:GLN:HA	2:F:161:LEU:CD2	2.32	0.59
2:F:5:ALA:O	2:F:7:SER:N	2.36	0.59
2:E:113:THR:CG2	2:E:138:SER:OG	2.50	0.59
1:B:55:LEU:HD13	1:B:58:LEU:HD11	1.82	0.59
2:E:175:ASP:CG	2:E:176:GLY:N	2.55	0.59
2:F:118:TYR:CG	2:F:159:LEU:HD11	2.37	0.59
2:F:64:LEU:O	2:F:66:ASN:N	2.35	0.59
2:E:173:TYR:CE2	2:E:181:ASN:HB2	2.33	0.59
2:E:95:SER:O	2:E:97:LEU:N	2.35	0.59
1:B:88:HIS:ND1	1:B:116:TYR:CE2	2.70	0.59
2:F:99:LYS:CD	2:F:99:LYS:O	2.50	0.59
2:E:95:SER:O	2:E:96:PHE:CD1	2.56	0.59
2:E:113:THR:O	2:E:114:TYR:CB	2.47	0.59
1:B:104:ARG:CB	1:B:122:VAL:CG2	2.79	0.59
2:E:73:MET:O	2:E:74:VAL:HB	2.02	0.59
2:F:99:LYS:O	2:F:99:LYS:HD2	2.02	0.59
1:D:107:ILE:HG22	1:D:107:ILE:O	2.03	0.59
2:F:160:CYS:O	2:F:161:LEU:CB	2.50	0.59
1:A:114:TYR:CG	1:D:22:GLY:HA3	2.37	0.59
2:F:18:ALA:O	2:F:21:SER:HB3	2.02	0.59
2:E:109:THR:HB	2:E:115:ALA:HB2	1.81	0.59
2:E:38:GLN:CG	2:E:61:VAL:HA	2.32	0.59
2:F:4:CYS:O	2:F:5:ALA:HB2	2.03	0.59
2:E:22:GLY:C	2:E:139:ARG:HH12	2.05	0.59
1:A:36:ALA:CB	1:A:40:THR:CG2	2.79	0.59
1:D:12:LEU:HA	1:D:105:TYR:O	2.03	0.58
1:D:35:LYS:HB2	1:D:41:TRP:CZ3	2.37	0.58
2:E:134:SER:CB	2:E:162:ALA:O	2.50	0.58
1:A:124:ASN:C	1:A:124:ASN:HD22	2.05	0.58
2:F:122:LEU:C	2:F:123:LEU:HD23	2.14	0.58
2:F:156:GLN:OE1	2:F:165:TYR:CE2	2.56	0.58
2:F:99:LYS:HD2	2:F:99:LYS:H	1.67	0.58
2:E:69:VAL:HA	2:E:182:LEU:CG	2.22	0.58
1:D:34:ARG:HH21	1:D:65:VAL:HG23	1.67	0.58
2:F:160:CYS:O	2:F:161:LEU:HB3	2.02	0.58
2:E:4:CYS:SG	2:E:5:ALA:O	2.62	0.58
1:D:68:ILE:HD11	1:D:96:THR:OG1	2.02	0.58
1:B:114:TYR:O	1:B:115:SER:HB2	2.02	0.58
2:E:48:ASP:O	2:E:50:THR:N	2.36	0.58
1:A:20:VAL:HG23	1:A:79:TRP:HH2	1.68	0.58
1:B:89:GLU:O	1:B:90:HIS:HB3	2.03	0.58
2:F:119:SER:C	2:F:132:SER:HB2	2.24	0.58

Continued on next page...

Continued from previous page...

Atom-1	Atom-2	Distance(Å)	Clash(Å)
2:F:160:CYS:CA	2:F:161:LEU:CD2	2.80	0.58
2:F:73:MET:CE	3:F:2:RTL:H14	2.33	0.58
2:E:155:ARG:O	2:E:159:LEU:HB2	2.04	0.58
2:E:19:ARG:O	2:E:111:TYR:HB2	1.99	0.58
2:E:61:VAL:HG12	2:E:63:LEU:H	1.68	0.58
2:E:97:LEU:O	2:E:98:GLN:C	2.42	0.58
2:F:53:MET:HE2	2:F:86:PHE:CD2	2.39	0.58
2:F:77:PHE:CD2	2:F:88:MET:HG3	2.39	0.58
2:E:79:ASP:C	2:E:80:THR:CG2	2.72	0.58
2:E:84:ALA:O	2:E:86:PHE:CE2	2.57	0.57
2:F:13:GLU:C	2:F:15:PHE:N	2.57	0.57
1:A:100:SER:CB	2:F:91:TRP:CG	2.84	0.57
1:A:97:ALA:C	1:A:99:ASP:N	2.57	0.57
2:E:76:THR:O	2:E:88:MET:HA	2.04	0.57
1:A:55:LEU:CD2	1:A:58:LEU:HD21	2.33	0.57
2:E:102:ASP:OD1	2:E:121:ARG:HD2	2.03	0.57
1:A:70:LYS:HD2	1:A:92:GLU:CD	2.25	0.57
1:C:97:ALA:O	1:C:98:ASN:C	2.42	0.57
2:E:181:ASN:O	2:E:182:LEU:CB	2.35	0.57
2:E:70:CYS:H	2:E:182:LEU:HG	1.70	0.57
1:D:59:THR:OG1	1:D:60:THR:N	2.37	0.57
2:F:40:ASN:OD1	2:F:170:HIS:C	2.43	0.57
1:B:22:GLY:N	1:C:114:TYR:CD1	2.71	0.57
2:F:73:MET:HE1	2:F:97:LEU:HB3	1.87	0.57
2:E:112:ASP:O	2:E:113:THR:HB	2.04	0.57
1:D:21:ARG:NH1	1:D:82:LEU:HD11	2.19	0.57
1:A:70:LYS:HD2	1:A:92:GLU:OE1	2.04	0.57
2:F:160:CYS:N	2:F:161:LEU:CD2	2.68	0.57
2:E:182:LEU:O	2:E:183:LEU:C	2.42	0.57
2:E:15:PHE:HA	2:E:111:TYR:OH	2.04	0.57
2:E:24:TRP:CE2	2:E:139:ARG:NH1	2.72	0.57
2:E:159:LEU:HD12	2:E:162:ALA:HA	1.86	0.57
2:E:64:LEU:O	2:E:65:ASN:CB	2.44	0.57
2:E:29:LYS:HG3	2:E:168:ILE:CG1	2.35	0.57
1:B:83:GLY:HA3	2:F:35:LEU:HD12	1.86	0.56
2:F:85:LYS:O	2:F:86:PHE:CD2	2.58	0.56
2:E:113:THR:HG23	2:E:138:SER:HG	1.67	0.56
2:E:159:LEU:HD12	2:E:159:LEU:O	2.04	0.56
1:D:56:HIS:N	1:D:56:HIS:ND1	2.52	0.56
1:D:66:GLU:OE2	1:D:99:ASP:CA	2.53	0.56
1:C:79:TRP:CZ2	1:C:112:SER:C	2.79	0.56
2:E:121:ARG:N	2:E:121:ARG:NH1	2.53	0.56

Continued on next page...

Continued from previous page...

Atom-1	Atom-2	Distance(Å)	Clash(Å)
1:A:100:SER:HB2	2:F:91:TRP:CD1	2.40	0.56
2:E:109:THR:CB	2:E:115:ALA:CB	2.77	0.56
1:C:94:VAL:HG12	1:D:89:GLU:HG3	1.86	0.56
1:D:90:HIS:O	1:D:90:HIS:HD2	1.87	0.56
2:E:107:VAL:CG2	2:E:159:LEU:CD2	2.84	0.56
2:E:127:GLY:O	2:E:128:THR:CB	2.53	0.56
2:E:170:HIS:O	2:E:171:ASN:CG	2.43	0.56
2:F:20:PHE:HD2	2:F:45:PHE:CD1	2.18	0.56
2:E:9:PHE:HB3	2:E:158:GLU:O	2.06	0.56
1:B:121:VAL:CG1	1:D:24:PRO:HD3	2.27	0.56
2:E:40:ASN:ND2	2:E:173:TYR:HB3	2.19	0.56
1:B:16:VAL:CB	1:B:25:ALA:HB3	2.34	0.56
2:F:156:GLN:HA	2:F:161:LEU:CG	2.36	0.56
2:E:133:TYR:HD1	2:E:133:TYR:C	2.07	0.56
1:B:104:ARG:HB2	1:B:122:VAL:CG2	2.35	0.56
1:B:13:MET:CG	1:B:56:HIS:NE2	2.69	0.56
1:A:25:ALA:O	1:A:53:GLY:HA2	2.05	0.56
2:F:124:ASN:HD22	2:F:125:LEU:HG	1.69	0.56
2:E:109:THR:CB	2:E:115:ALA:HB2	2.36	0.56
2:F:161:LEU:O	2:F:162:ALA:C	2.44	0.56
2:F:37:LEU:C	2:F:61:VAL:HG22	2.25	0.56
1:C:105:TYR:CD2	1:C:105:TYR:N	2.73	0.56
2:F:128:THR:O	2:F:129:CYS:HB3	2.06	0.56
2:F:52:GLN:HE22	2:F:76:THR:HG22	1.71	0.56
1:D:20:VAL:CG1	2:E:64:LEU:HD21	2.36	0.56
1:B:21:ARG:O	1:C:114:TYR:CE1	2.59	0.56
2:E:77:PHE:CZ	2:E:88:MET:HG3	2.41	0.56
2:E:136:VAL:CG2	2:E:163:ALA:HB2	2.36	0.55
1:B:104:ARG:HB2	1:B:122:VAL:HG21	1.88	0.55
1:D:76:LYS:O	1:D:80:LYS:HB2	2.05	0.55
1:D:16:VAL:O	1:D:17:LEU:CD2	2.40	0.55
1:D:66:GLU:HG2	1:D:99:ASP:N	2.21	0.55
2:E:20:PHE:HD1	2:E:111:TYR:CD1	2.23	0.55
1:A:83:GLY:O	2:E:67:TRP:HA	2.06	0.55
1:D:21:ARG:CZ	1:D:82:LEU:HD21	2.36	0.55
2:F:57:ALA:HB2	3:F:2:RTL:H41	1.88	0.55
2:E:139:ARG:NH1	2:E:139:ARG:CG	2.67	0.55
1:D:98:ASN:C	1:D:103:ARG:NH1	2.59	0.55
1:A:7:GLU:CG	1:A:8:SER:H	2.17	0.55
2:F:38:GLN:CA	2:F:60:ARG:O	2.55	0.55
2:E:182:LEU:O	2:E:183:LEU:OXT	2.25	0.55
1:B:21:ARG:HD3	1:B:82:LEU:CD2	2.32	0.55

Continued on next page...

Continued from previous page...

Atom-1	Atom-2	Distance(Å)	Clash(Å)
2:F:45:PHE:CE2	2:F:55:ALA:CB	2.90	0.55
2:F:6:VAL:CG2	2:F:7:SER:N	2.68	0.55
2:E:6:VAL:CG2	2:E:128:THR:HG22	2.36	0.55
2:F:114:TYR:HB3	2:F:144:LEU:HD22	1.88	0.55
1:A:68:ILE:HD13	1:B:89:GLU:HG3	1.88	0.55
2:E:108:ASP:OD1	2:E:155:ARG:CZ	2.55	0.55
2:E:169:VAL:CG2	2:E:171:ASN:OD1	2.55	0.55
1:C:95:PHE:CA	1:D:89:GLU:HG2	2.29	0.55
1:A:34:ARG:CG	1:A:34:ARG:O	2.55	0.55
2:F:161:LEU:O	2:F:164:GLN:HB3	2.05	0.55
1:B:10:CYS:SG	1:B:104:ARG:NH1	2.80	0.55
2:F:11:VAL:CG2	2:F:84:ALA:HB1	2.36	0.54
2:F:124:ASN:C	2:F:124:ASN:HD22	2.10	0.54
2:F:158:GLU:O	2:F:160:CYS:N	2.40	0.54
1:A:19:ALA:HB3	1:A:112:SER:OG	2.07	0.54
2:E:35:LEU:HD22	2:E:62:ARG:CZ	2.37	0.54
1:A:60:THR:OG1	1:A:63:GLN:HB3	2.07	0.54
2:F:130:ALA:O	2:F:131:ASP:HB3	2.07	0.54
1:D:76:LYS:HD3	1:D:80:LYS:HE2	1.88	0.54
1:B:32:VAL:HG13	1:B:71:VAL:HG22	1.88	0.54
2:F:126:ASP:N	2:F:126:ASP:OD1	2.40	0.54
2:F:53:MET:HE2	2:F:86:PHE:CE2	2.43	0.54
1:A:32:VAL:O	1:A:33:PHE:CD2	2.60	0.54
1:B:13:MET:HG3	1:B:56:HIS:NE2	2.19	0.54
1:B:26:ILE:HG23	1:B:50:SER:O	2.07	0.54
2:F:122:LEU:HD23	2:F:123:LEU:C	2.28	0.54
2:E:15:PHE:HE2	2:E:106:ILE:HD12	1.69	0.54
1:A:113:PRO:HG2	1:D:20:VAL:HG13	1.89	0.54
1:D:79:TRP:HA	1:D:79:TRP:CE3	2.43	0.54
2:F:156:GLN:CA	2:F:161:LEU:HD21	2.36	0.54
2:F:29:LYS:CA	2:F:165:TYR:HD1	2.20	0.54
2:F:19:ARG:CD	2:F:111:TYR:CD2	2.91	0.54
2:E:159:LEU:HD13	2:E:159:LEU:C	2.27	0.54
2:F:99:LYS:HD2	2:F:99:LYS:N	2.23	0.54
2:E:113:THR:H	2:E:139:ARG:CD	2.17	0.54
2:E:159:LEU:HB3	2:E:162:ALA:CB	2.31	0.54
3:E:1:RTL:H8	3:E:1:RTL:C18	2.37	0.54
2:F:118:TYR:HE1	2:F:132:SER:CB	2.21	0.54
2:F:39:ASP:OD2	2:F:60:ARG:HB3	2.08	0.54
2:E:166:ARG:HG3	2:E:167:LEU:H	1.71	0.54
1:A:22:GLY:HA3	1:D:114:TYR:CD2	2.43	0.54
2:E:155:ARG:O	2:E:159:LEU:CB	2.56	0.54

Continued on next page...

Continued from previous page...

Atom-1	Atom-2	Distance(Å)	Clash(Å)
2:E:107:VAL:CG2	2:E:159:LEU:HD21	2.37	0.54
1:D:19:ALA:HB2	1:D:110:LEU:HD11	1.88	0.54
1:C:98:ASN:HD22	1:C:98:ASN:N	2.06	0.54
1:D:39:ASP:OD1	1:D:39:ASP:O	2.25	0.54
1:B:20:VAL:O	1:C:114:TYR:HD1	1.89	0.54
2:F:112:ASP:O	2:F:113:THR:CB	2.56	0.54
2:F:147:GLU:O	2:F:148:ALA:C	2.45	0.54
2:F:32:PRO:HB3	2:F:133:TYR:HB3	1.89	0.54
2:F:92:GLY:C	2:F:94:ALA:N	2.55	0.54
2:E:36:PHE:CE2	3:E:1:RTL:H191	2.42	0.54
1:D:66:GLU:HG2	1:D:98:ASN:HA	1.88	0.54
2:F:48:ASP:OD1	2:F:50:THR:HG22	2.08	0.54
1:D:74:ASP:OD2	1:D:77:SER:HB2	2.07	0.54
1:D:10:CYS:CB	1:D:56:HIS:HD2	2.21	0.54
1:A:34:ARG:O	1:A:34:ARG:HG2	2.08	0.54
2:F:114:TYR:CD1	2:F:114:TYR:O	2.59	0.53
2:F:5:ALA:O	2:F:7:SER:O	2.27	0.53
1:B:34:ARG:NH2	1:B:65:VAL:CG2	2.59	0.53
1:A:35:LYS:HE3	1:A:39:ASP:OD1	2.08	0.53
2:F:103:ASP:N	2:F:121:ARG:HD3	2.20	0.53
2:F:90:TYR:HE2	2:F:98:GLN:O	1.91	0.53
1:B:121:VAL:O	1:B:122:VAL:O	2.25	0.53
2:E:24:TRP:CZ3	2:E:139:ARG:HD2	2.43	0.53
1:D:21:ARG:HD3	2:E:64:LEU:CD1	2.38	0.53
1:D:13:MET:SD	1:D:56:HIS:CE1	3.02	0.53
1:D:99:ASP:C	1:D:101:GLY:N	2.60	0.53
1:B:16:VAL:HG12	1:B:17:LEU:H	1.73	0.53
1:C:35:LYS:N	1:C:41:TRP:CZ3	2.77	0.53
2:F:17:LYS:CD	2:F:53:MET:HB2	2.28	0.53
2:F:53:MET:O	2:F:77:PHE:CD1	2.62	0.53
2:F:60:ARG:HD3	2:F:173:TYR:CD2	2.42	0.53
2:E:107:VAL:O	2:E:107:VAL:CG1	2.52	0.53
1:B:124:ASN:O	1:B:126:LYS:N	2.41	0.53
2:E:39:ASP:HB3	2:E:169:VAL:CG1	2.39	0.53
1:A:50:SER:OG	1:A:52:SER:N	2.37	0.53
1:D:66:GLU:CG	1:D:103:ARG:HH12	2.18	0.53
1:D:69:TYR:H	1:D:69:TYR:HD1	1.55	0.53
1:D:119:THR:HG23	1:D:120:ALA:N	2.24	0.53
2:F:164:GLN:O	2:F:164:GLN:CG	2.56	0.53
2:E:15:PHE:HD1	2:E:16:ASP:N	2.07	0.53
1:A:18:ASP:OD1	1:A:20:VAL:N	2.41	0.53
2:E:81:GLU:HA	2:E:81:GLU:OE1	2.09	0.53

Continued on next page...

Continued from previous page...

Atom-1	Atom-2	Distance(Å)	Clash(Å)
2:F:30:LYS:HE3	2:F:31:ASP:C	2.28	0.53
2:E:139:ARG:HG3	2:E:139:ARG:HH11	1.74	0.53
1:D:20:VAL:HG12	2:E:64:LEU:HD21	1.91	0.53
2:E:78:THR:HG1	2:E:87:LYS:HB2	1.71	0.53
2:F:99:LYS:CD	2:F:99:LYS:C	2.77	0.53
2:F:124:ASN:HD22	2:F:125:LEU:N	2.07	0.52
2:F:6:VAL:HA	2:F:9:PHE:CE1	2.44	0.52
2:F:108:ASP:O	2:F:109:THR:HB	2.08	0.52
2:F:77:PHE:CD1	2:F:77:PHE:N	2.76	0.52
2:E:52:GLN:OE1	2:E:52:GLN:HA	2.09	0.52
1:C:79:TRP:CE3	1:C:79:TRP:HA	2.44	0.52
2:E:159:LEU:CD1	2:E:162:ALA:CA	2.81	0.52
2:E:20:PHE:HB2	2:E:111:TYR:CD1	2.44	0.52
2:E:63:LEU:HG	2:E:67:TRP:CE3	2.45	0.52
1:D:70:LYS:CA	1:D:93:VAL:O	2.54	0.52
1:B:17:LEU:HB2	1:B:110:LEU:CD1	2.38	0.52
2:F:124:ASN:CB	2:F:130:ALA:HB2	2.36	0.52
2:F:67:TRP:C	2:F:67:TRP:CD1	2.83	0.52
2:F:52:GLN:NE2	2:F:76:THR:HG22	2.24	0.52
2:F:124:ASN:HB2	2:F:130:ALA:CB	2.38	0.52
2:F:79:ASP:C	2:F:80:THR:HG22	2.30	0.52
1:D:41:TRP:HZ3	1:D:68:ILE:O	1.92	0.52
1:A:112:SER:O	1:A:115:SER:O	2.27	0.52
1:D:26:ILE:HG23	1:D:50:SER:C	2.30	0.52
1:A:87:PHE:CE2	1:B:95:PHE:CB	2.93	0.52
2:E:124:ASN:O	2:E:127:GLY:N	2.42	0.52
1:A:26:ILE:HG13	1:A:50:SER:C	2.24	0.52
2:F:118:TYR:CG	2:F:159:LEU:HD21	2.44	0.52
1:B:87:PHE:HD2	1:B:88:HIS:NE2	2.03	0.52
1:B:97:ALA:C	1:B:103:ARG:HH12	2.13	0.52
1:D:99:ASP:N	1:D:103:ARG:NH1	2.57	0.52
1:A:28:VAL:O	1:A:48:LYS:HA	2.10	0.52
1:C:26:ILE:HD11	1:C:51:GLU:CD	2.30	0.52
2:E:20:PHE:CD1	2:E:111:TYR:HD1	2.28	0.52
2:E:63:LEU:HD23	2:E:69:VAL:HG11	1.92	0.52
2:E:90:TYR:OH	2:E:98:GLN:NE2	2.40	0.52
1:D:15:LYS:HA	1:D:53:GLY:O	2.10	0.52
2:F:25:TYR:O	2:F:137:PHE:HD1	1.93	0.52
1:D:34:ARG:CG	1:D:34:ARG:HH11	2.21	0.52
1:D:39:ASP:CG	1:D:39:ASP:O	2.48	0.52
1:C:87:PHE:HB2	1:C:114:TYR:CD2	2.45	0.51
2:E:32:PRO:CB	2:E:133:TYR:HB3	2.40	0.51

Continued on next page...

Continued from previous page...

Atom-1	Atom-2	Distance(Å)	Clash(Å)
2:E:173:TYR:CD2	2:E:173:TYR:C	2.83	0.51
1:D:12:LEU:CD2	1:D:58:LEU:CD1	2.82	0.51
1:B:114:TYR:CD2	1:C:22:GLY:HA3	2.45	0.51
1:D:73:ILE:HG22	1:D:75:THR:CG2	2.40	0.51
2:F:29:LYS:O	2:F:165:TYR:HD1	1.93	0.51
2:F:82:ASP:HB2	2:F:85:LYS:HG3	1.92	0.51
2:E:57:ALA:HB3	3:E:1:RTL:H173	1.92	0.51
2:E:74:VAL:HG12	2:E:91:TRP:O	2.09	0.51
1:B:116:TYR:CD1	1:B:116:TYR:O	2.63	0.51
2:E:54:SER:O	2:E:55:ALA:HB2	2.10	0.51
2:F:38:GLN:HB2	2:F:60:ARG:C	2.22	0.51
2:F:78:THR:O	2:F:79:ASP:O	2.28	0.51
2:E:24:TRP:CE2	2:E:139:ARG:CZ	2.93	0.51
1:B:30:VAL:O	1:B:46:SER:HA	2.10	0.51
2:E:103:ASP:HB2	2:E:121:ARG:CZ	2.41	0.51
1:D:25:ALA:HB1	1:D:28:VAL:CG2	2.37	0.51
1:C:97:ALA:C	1:C:98:ASN:HD22	2.14	0.51
1:C:28:VAL:HB	1:C:49:THR:CG2	2.40	0.51
2:F:118:TYR:CD2	2:F:159:LEU:HD11	2.45	0.51
2:E:106:ILE:O	2:E:106:ILE:CG2	2.56	0.51
2:E:24:TRP:HZ3	2:E:114:TYR:H	1.58	0.51
2:E:159:LEU:O	2:E:160:CYS:C	2.49	0.51
1:B:40:THR:HG22	1:B:41:TRP:N	2.25	0.51
1:C:103:ARG:HB2	1:C:105:TYR:CE2	2.46	0.51
2:F:118:TYR:CD2	2:F:159:LEU:CD2	2.87	0.51
2:F:122:LEU:CD2	2:F:123:LEU:C	2.79	0.51
2:F:36:PHE:O	2:F:61:VAL:HG13	2.10	0.51
2:E:114:TYR:CD1	2:E:152:VAL:HG22	2.46	0.51
2:E:20:PHE:HD1	2:E:111:TYR:HD1	1.57	0.51
2:E:94:ALA:O	2:E:95:SER:O	2.28	0.51
1:A:102:PRO:O	1:A:103:ARG:HG2	2.11	0.51
1:A:95:PHE:HA	1:B:89:GLU:HG2	1.93	0.51
2:E:145:PRO:HB2	2:E:147:GLU:OE1	2.10	0.51
2:F:4:CYS:N	2:F:160:CYS:HG	2.09	0.51
1:A:64:PHE:CD1	1:A:69:TYR:CZ	2.98	0.51
1:A:98:ASN:OD1	1:A:102:PRO:CA	2.45	0.51
2:E:47:VAL:CG1	2:E:48:ASP:H	2.10	0.51
2:E:52:GLN:NE2	2:E:76:THR:HG22	2.25	0.51
1:A:9:LYS:O	1:A:10:CYS:C	2.49	0.51
2:F:110:ASP:O	2:F:111:TYR:CB	2.59	0.51
2:E:108:ASP:C	2:E:109:THR:CG2	2.73	0.51
2:E:39:ASP:CB	2:E:169:VAL:CG1	2.88	0.51

Continued on next page...

Continued from previous page...

Atom-1	Atom-2	Distance(Å)	Clash(Å)
2:E:84:ALA:O	2:E:86:PHE:CD2	2.64	0.51
1:D:99:ASP:N	1:D:103:ARG:HH11	2.09	0.51
1:C:64:PHE:CD1	1:C:69:TYR:CE2	2.99	0.51
2:E:52:GLN:CD	2:E:77:PHE:O	2.49	0.51
1:B:16:VAL:HG12	1:B:17:LEU:N	2.26	0.51
1:B:16:VAL:CG2	1:B:49:THR:HG21	2.41	0.51
1:B:78:TYR:O	1:B:81:ALA:HB3	2.10	0.51
1:D:55:LEU:HD11	1:D:58:LEU:HD21	1.92	0.51
1:D:66:GLU:CG	1:D:99:ASP:N	2.71	0.51
1:A:98:ASN:OD1	1:A:103:ARG:N	2.44	0.51
2:E:159:LEU:HG	2:E:162:ALA:CB	2.37	0.50
1:A:79:TRP:HE3	1:A:84:ILE:HD12	1.77	0.50
1:D:55:LEU:HD22	1:D:55:LEU:O	2.10	0.50
1:A:16:VAL:HG11	1:A:111:LEU:CD1	2.30	0.50
1:B:18:ASP:CG	1:B:21:ARG:CB	2.77	0.50
2:F:11:VAL:C	2:F:12:LYS:O	2.47	0.50
2:E:64:LEU:HG	2:E:64:LEU:O	2.11	0.50
2:F:48:ASP:O	2:F:49:GLU:C	2.49	0.50
1:C:79:TRP:CD1	1:C:86:PRO:HB3	2.46	0.50
2:E:85:LYS:HG2	2:E:105:TRP:CG	2.45	0.50
2:E:30:LYS:HE2	2:E:161:LEU:HG	1.94	0.50
2:F:124:ASN:C	2:F:124:ASN:ND2	2.65	0.50
1:B:10:CYS:N	1:B:11:PRO:HD3	2.27	0.50
2:E:41:ILE:HD13	2:E:135:PHE:HE2	1.77	0.50
2:E:39:ASP:O	2:E:40:ASN:C	2.50	0.50
1:A:33:PHE:O	1:A:69:TYR:HA	2.11	0.50
1:D:99:ASP:O	1:D:100:SER:C	2.45	0.50
1:C:79:TRP:CZ2	1:C:113:PRO:N	2.80	0.50
2:E:24:TRP:CE2	2:E:139:ARG:HD2	2.45	0.50
2:E:71:ALA:HB1	2:E:73:MET:HE1	1.93	0.50
1:D:54:GLU:OE1	1:D:56:HIS:NE2	2.44	0.50
2:F:74:VAL:HG22	2:F:75:GLY:N	2.27	0.50
1:B:85:SER:OG	2:F:96:PHE:C	2.49	0.50
2:F:28:ALA:C	2:F:29:LYS:CG	2.78	0.50
1:D:76:LYS:CD	1:D:80:LYS:HE2	2.42	0.50
1:B:69:TYR:O	1:B:94:VAL:HA	2.12	0.50
1:D:89:GLU:O	1:D:90:HIS:HB3	2.12	0.50
2:E:77:PHE:CE2	2:E:88:MET:HB2	2.47	0.50
2:F:147:GLU:OE1	2:F:147:GLU:N	2.36	0.50
2:F:63:LEU:CD2	2:F:96:PHE:HE1	2.25	0.50
2:E:15:PHE:CE1	2:E:17:LYS:CA	2.93	0.50
1:B:98:ASN:HB3	1:B:100:SER:OG	2.12	0.50

Continued on next page...

Continued from previous page...

Atom-1	Atom-2	Distance(Å)	Clash(Å)
1:D:74:ASP:OD2	1:D:77:SER:CB	2.60	0.50
1:D:10:CYS:HB3	1:D:56:HIS:CD2	2.47	0.49
2:F:140:ASP:OD2	2:F:141:PRO:CD	2.59	0.49
2:E:72:ASP:HB3	2:E:93:VAL:CG2	2.43	0.49
2:E:35:LEU:HD22	2:E:62:ARG:NE	2.27	0.49
2:E:156:GLN:CG	2:E:163:ALA:HB3	2.33	0.49
1:D:28:VAL:O	1:D:30:VAL:HG23	2.12	0.49
1:C:28:VAL:HB	1:C:49:THR:HG21	1.93	0.49
2:F:38:GLN:CG	2:F:62:ARG:HD2	2.42	0.49
1:C:94:VAL:HG12	1:D:89:GLU:HB2	1.93	0.49
1:C:97:ALA:CB	1:C:98:ASN:HD22	2.25	0.49
2:E:73:MET:HG3	3:E:1:RTL:H10	1.95	0.49
1:B:66:GLU:HG2	1:B:99:ASP:OD1	2.12	0.49
2:E:45:PHE:CD2	2:E:55:ALA:HB1	2.47	0.49
2:F:89:LYS:HA	2:F:100:GLY:O	2.12	0.49
1:B:123:THR:HG23	1:B:125:PRO:CD	2.32	0.49
1:B:34:ARG:CZ	1:B:65:VAL:HG23	2.40	0.49
2:E:44:GLU:O	2:E:55:ALA:HA	2.12	0.49
1:C:87:PHE:HB2	1:C:114:TYR:CE2	2.47	0.49
1:B:83:GLY:O	2:F:63:LEU:HD11	2.12	0.49
2:E:86:PHE:C	2:E:87:LYS:HG2	2.33	0.49
2:F:27:MET:O	2:F:27:MET:HG2	2.11	0.49
2:E:9:PHE:CE2	2:E:160:CYS:CB	2.68	0.49
1:D:21:ARG:HD3	1:D:82:LEU:HD21	1.93	0.49
1:A:103:ARG:O	1:A:105:TYR:CE2	2.65	0.49
1:A:8:SER:O	1:A:8:SER:OG	2.29	0.49
1:C:123:THR:OG1	1:C:123:THR:O	2.30	0.49
2:F:78:THR:O	2:F:87:LYS:HG3	2.13	0.49
2:F:77:PHE:CE2	2:F:88:MET:CG	2.96	0.49
2:E:45:PHE:CD2	2:E:55:ALA:CB	2.96	0.49
1:D:102:PRO:CG	1:D:122:VAL:HG12	2.41	0.49
2:F:44:GLU:HB3	2:F:56:THR:HG23	1.95	0.49
1:C:79:TRP:HZ2	1:C:112:SER:CA	2.26	0.49
2:F:107:VAL:CG2	2:F:159:LEU:HD23	2.40	0.49
1:A:79:TRP:CE3	1:A:84:ILE:HD12	2.48	0.49
1:B:102:PRO:HD2	1:B:124:ASN:ND2	2.28	0.49
1:C:69:TYR:CD1	1:C:69:TYR:N	2.81	0.49
2:F:138:SER:OG	2:F:144:LEU:HD23	2.13	0.48
1:D:32:VAL:C	1:D:33:PHE:CD1	2.86	0.48
1:C:26:ILE:HD11	1:C:51:GLU:OE2	2.13	0.48
2:F:118:TYR:CB	2:F:159:LEU:HD21	2.42	0.48
2:F:73:MET:HE2	3:F:2:RTL:H12	1.95	0.48

Continued on next page...

Continued from previous page...

Atom-1	Atom-2	Distance(Å)	Clash(Å)
2:E:6:VAL:HG22	2:E:128:THR:HG22	1.95	0.48
1:A:50:SER:OG	1:A:51:GLU:N	2.45	0.48
1:C:87:PHE:O	1:D:95:PHE:HB2	2.14	0.48
2:F:134:SER:O	2:F:165:TYR:HE1	1.96	0.48
2:E:13:GLU:C	2:E:15:PHE:N	2.66	0.48
1:A:26:ILE:O	1:A:27:ASN:HB2	2.12	0.48
1:A:105:TYR:CD2	1:A:105:TYR:N	2.81	0.48
2:E:35:LEU:HD23	2:E:35:LEU:H	1.79	0.48
2:F:54:SER:O	2:F:55:ALA:HB2	2.14	0.48
2:E:30:LYS:HG2	2:E:134:SER:HB3	1.95	0.48
1:D:90:HIS:C	1:D:90:HIS:CD2	2.86	0.48
2:F:104:HIS:C	2:F:105:TRP:O	2.52	0.48
2:E:159:LEU:HD12	2:E:161:LEU:C	2.31	0.48
1:A:7:GLU:CG	1:A:8:SER:N	2.70	0.48
2:E:118:TYR:HE1	2:E:132:SER:CB	2.25	0.48
2:E:95:SER:C	2:E:97:LEU:H	2.17	0.48
1:C:17:LEU:HD23	1:C:24:PRO:HA	1.95	0.48
2:E:116:VAL:CG1	2:E:117:GLN:N	2.30	0.48
1:B:34:ARG:HB2	1:B:69:TYR:CD2	2.49	0.48
1:B:41:TRP:CD1	1:B:70:LYS:HE2	2.49	0.48
1:B:70:LYS:HA	1:B:93:VAL:O	2.14	0.48
2:F:37:LEU:HD13	2:F:59:GLY:HA3	1.95	0.48
2:E:15:PHE:CD1	2:E:16:ASP:N	2.81	0.48
2:E:82:ASP:C	2:E:84:ALA:H	2.17	0.48
2:E:49:GLU:O	2:E:50:THR:C	2.51	0.48
1:A:87:PHE:CE2	1:B:95:PHE:HB3	2.48	0.48
2:F:85:LYS:HD2	2:F:105:TRP:HE1	1.78	0.48
2:E:173:TYR:C	2:E:173:TYR:HD2	2.14	0.48
1:D:85:SER:HA	1:D:86:PRO:HD2	1.51	0.48
3:E:1:RTL:C8	3:E:1:RTL:C18	2.89	0.48
1:A:59:THR:HG23	1:A:60:THR:N	2.28	0.48
2:F:144:LEU:HD12	2:F:149:GLN:OE1	2.14	0.48
2:E:23:THR:O	2:E:139:ARG:HG3	2.13	0.48
2:F:26:ALA:HB1	2:F:168:ILE:CD1	2.44	0.47
2:E:19:ARG:O	2:E:19:ARG:HG2	2.14	0.47
2:E:95:SER:O	2:E:96:PHE:CG	2.67	0.47
1:B:39:ASP:CG	1:B:39:ASP:O	2.53	0.47
1:B:21:ARG:HB2	1:B:23:SER:OG	2.13	0.47
2:F:104:HIS:CG	2:F:104:HIS:O	2.66	0.47
2:F:118:TYR:HE1	2:F:132:SER:OG	1.97	0.47
2:E:107:VAL:HG21	2:E:159:LEU:HD23	1.94	0.47
1:B:102:PRO:CD	1:B:124:ASN:ND2	2.77	0.47

Continued on next page...

Continued from previous page...

Atom-1	Atom-2	Distance(Å)	Clash(Å)
1:D:21:ARG:HD3	2:E:64:LEU:HD11	1.96	0.47
3:E:1:RTL:H181	3:E:1:RTL:C8	2.44	0.47
2:F:159:LEU:CD1	2:F:159:LEU:C	2.81	0.47
2:F:29:LYS:HD3	2:F:41:ILE:HD13	1.96	0.47
2:E:159:LEU:CD1	2:E:162:ALA:HB2	2.43	0.47
2:F:21:SER:O	2:F:21:SER:OG	2.32	0.47
2:F:92:GLY:HA3	2:F:97:LEU:HD12	1.97	0.47
2:E:20:PHE:CD1	2:E:111:TYR:CD1	3.02	0.47
2:E:32:PRO:HB3	2:E:133:TYR:HB3	1.96	0.47
2:F:99:LYS:HD3	2:F:99:LYS:O	2.15	0.47
2:F:36:PHE:HE2	3:F:2:RTL:H191	1.78	0.47
2:E:147:GLU:O	2:E:150:LYS:CB	2.62	0.47
1:C:118:THR:O	1:D:115:SER:HA	2.15	0.47
1:B:18:ASP:OD1	1:B:21:ARG:HB2	2.11	0.47
2:F:63:LEU:HD23	2:F:69:VAL:CG1	2.38	0.47
2:E:24:TRP:HZ3	2:E:114:TYR:N	2.13	0.47
2:E:138:SER:HB2	2:E:144:LEU:HD21	1.96	0.47
2:E:29:LYS:H	2:E:165:TYR:HA	1.80	0.47
1:D:21:ARG:O	1:D:22:GLY:C	2.53	0.47
2:F:157:GLU:HB3	2:F:158:GLU:OE2	2.14	0.47
2:F:36:PHE:HE2	3:F:2:RTL:C19	2.27	0.47
2:F:105:TRP:O	2:F:117:GLN:HG2	2.14	0.47
2:E:12:LYS:HG2	2:E:15:PHE:HB2	1.95	0.47
2:E:182:LEU:HD22	2:E:183:LEU:CG	2.32	0.47
1:A:97:ALA:C	1:A:99:ASP:H	2.18	0.47
2:E:35:LEU:HD13	2:E:62:ARG:HG3	1.96	0.47
2:F:6:VAL:HG12	2:F:129:CYS:CB	2.20	0.47
2:F:77:PHE:HE2	2:F:104:HIS:NE2	2.03	0.47
2:E:164:GLN:HG2	2:E:165:TYR:N	2.20	0.47
2:E:30:LYS:O	2:E:32:PRO:HD2	2.15	0.47
1:D:13:MET:HG3	1:D:56:HIS:ND1	2.29	0.47
2:E:24:TRP:NE1	2:E:139:ARG:CZ	2.78	0.47
1:D:66:GLU:CB	1:D:97:ALA:O	2.63	0.47
1:B:35:LYS:HE3	1:B:35:LYS:HB2	1.58	0.47
2:F:28:ALA:HB1	2:F:165:TYR:CG	2.50	0.47
2:E:107:VAL:O	2:E:108:ASP:CB	2.60	0.47
1:B:104:ARG:HB3	1:B:122:VAL:HG21	1.96	0.47
1:D:84:ILE:HG23	2:E:96:PHE:HB2	1.97	0.47
2:E:78:THR:O	2:E:79:ASP:O	2.33	0.47
1:D:44:PHE:HE2	1:D:59:THR:HB	1.80	0.47
1:C:79:TRP:HA	1:C:79:TRP:HE3	1.78	0.46
2:F:38:GLN:HB2	2:F:61:VAL:HA	1.96	0.46

Continued on next page...

Continued from previous page...

Atom-1	Atom-2	Distance(Å)	Clash(Å)
1:B:123:THR:C	1:B:125:PRO:HD3	2.35	0.46
2:E:82:ASP:C	2:E:84:ALA:N	2.69	0.46
2:F:151:ILE:C	2:F:153:ALA:N	2.67	0.46
2:F:6:VAL:HG11	2:F:129:CYS:CB	2.22	0.46
2:E:26:ALA:O	2:E:27:MET:HE3	2.16	0.46
1:B:123:THR:OG1	1:B:124:ASN:N	2.46	0.46
1:A:36:ALA:HB3	1:A:40:THR:CG2	2.30	0.46
1:B:16:VAL:HG23	1:B:49:THR:HG21	1.98	0.46
1:C:35:LYS:HD2	1:C:41:TRP:CZ2	2.51	0.46
1:C:58:LEU:HD23	1:C:58:LEU:HA	1.62	0.46
1:B:21:ARG:C	1:C:114:TYR:CE1	2.89	0.46
2:F:146:PRO:HD2	2:F:147:GLU:OE1	2.15	0.46
2:F:77:PHE:CE2	2:F:88:MET:HG3	2.49	0.46
1:C:106:THR:HB	1:C:121:VAL:HB	1.96	0.46
2:F:156:GLN:CB	2:F:161:LEU:HG	2.45	0.46
2:F:163:ALA:C	2:F:165:TYR:H	2.18	0.46
2:F:173:TYR:C	2:F:173:TYR:CD1	2.88	0.46
2:F:38:GLN:NE2	2:F:62:ARG:HD2	2.31	0.46
2:F:71:ALA:HB1	2:F:97:LEU:HD22	1.97	0.46
2:E:108:ASP:OD1	2:E:155:ARG:NH1	2.48	0.46
1:A:32:VAL:C	1:A:33:PHE:CD2	2.88	0.46
1:B:66:GLU:HA	1:B:97:ALA:O	2.15	0.46
1:C:66:GLU:HB3	1:C:98:ASN:O	2.16	0.46
2:F:113:THR:O	2:F:138:SER:CA	2.60	0.46
2:E:138:SER:HB2	2:E:144:LEU:HD22	1.92	0.46
2:E:52:GLN:HE21	2:E:76:THR:HG22	1.81	0.46
1:B:82:LEU:HB3	1:B:84:ILE:HD12	1.97	0.46
2:F:29:LYS:O	2:F:165:TYR:HA	2.16	0.46
2:F:17:LYS:HD3	2:F:53:MET:CB	2.29	0.46
2:F:29:LYS:O	2:F:165:TYR:CD1	2.68	0.46
1:C:67:GLY:O	1:C:69:TYR:CE1	2.68	0.46
1:A:97:ALA:O	1:A:98:ASN:C	2.52	0.46
2:F:44:GLU:O	2:F:44:GLU:HG3	2.15	0.46
2:F:106:ILE:O	2:F:106:ILE:HG22	2.15	0.46
2:E:132:SER:OG	2:E:133:TYR:N	2.49	0.46
2:E:159:LEU:CD1	2:E:162:ALA:HA	2.45	0.46
2:E:40:ASN:O	2:E:59:GLY:HA2	2.16	0.46
1:A:32:VAL:HB	1:A:45:ALA:H	1.80	0.46
2:E:92:GLY:O	2:E:93:VAL:C	2.55	0.46
1:C:67:GLY:O	1:C:69:TYR:CD1	2.69	0.46
2:F:74:VAL:CG2	2:F:75:GLY:N	2.79	0.46
1:C:94:VAL:O	1:D:89:GLU:HB2	2.16	0.46

Continued on next page...

Continued from previous page...

Atom-1	Atom-2	Distance(Å)	Clash(Å)
2:E:120:CYS:SG	2:E:131:ASP:O	2.74	0.46
1:D:21:ARG:HG2	2:E:64:LEU:HD11	1.98	0.46
1:B:17:LEU:CB	1:B:110:LEU:HD13	2.43	0.46
2:F:156:GLN:C	2:F:161:LEU:CD2	2.85	0.45
2:E:95:SER:C	2:E:97:LEU:N	2.69	0.45
1:A:87:PHE:CD2	1:A:87:PHE:C	2.89	0.45
1:C:59:THR:OG1	1:C:60:THR:N	2.48	0.45
2:F:27:MET:CA	2:F:168:ILE:CD1	2.95	0.45
2:E:70:CYS:N	2:E:182:LEU:HD12	2.26	0.45
1:C:60:THR:OG1	1:C:63:GLN:HB2	2.15	0.45
1:D:13:MET:CG	1:D:56:HIS:CE1	3.00	0.45
1:C:26:ILE:HD11	1:C:51:GLU:OE1	2.16	0.45
1:B:24:PRO:CB	1:B:52:SER:O	2.65	0.45
2:E:151:ILE:C	2:E:153:ALA:N	2.66	0.45
2:E:107:VAL:CG2	2:E:159:LEU:HD23	2.46	0.45
2:E:9:PHE:CB	2:E:158:GLU:O	2.65	0.45
2:E:70:CYS:N	2:E:182:LEU:HG	2.31	0.45
2:E:11:VAL:CB	2:E:84:ALA:HB1	2.43	0.45
1:D:25:ALA:O	1:D:28:VAL:CG2	2.62	0.45
1:D:28:VAL:HG12	1:D:28:VAL:O	2.17	0.45
1:C:10:CYS:HA	1:C:11:PRO:HD3	1.75	0.45
1:D:60:THR:OG1	1:D:63:GLN:HB2	2.16	0.45
2:F:156:GLN:CA	2:F:161:LEU:HG	2.46	0.45
2:E:159:LEU:HD12	2:E:162:ALA:CB	2.44	0.45
1:D:56:HIS:O	1:D:57:GLY:C	2.54	0.45
1:D:66:GLU:HG2	1:D:103:ARG:NH1	2.26	0.45
2:F:37:LEU:HA	2:F:61:VAL:HG21	1.84	0.45
2:E:136:VAL:CG1	2:E:152:VAL:HG11	2.46	0.45
2:E:20:PHE:CB	2:E:111:TYR:HD1	2.30	0.45
1:B:10:CYS:SG	1:B:104:ARG:CZ	3.05	0.45
2:E:35:LEU:HD23	2:E:35:LEU:N	2.32	0.45
1:A:12:LEU:O	1:A:13:MET:HG2	2.17	0.45
2:E:89:LYS:HB2	2:E:89:LYS:HE2	1.39	0.45
2:F:32:PRO:HG3	2:F:133:TYR:HB3	1.99	0.45
2:F:30:LYS:CE	2:F:31:ASP:C	2.86	0.45
1:A:55:LEU:HD22	1:A:58:LEU:CD2	2.47	0.45
2:F:18:ALA:O	2:F:21:SER:N	2.48	0.45
2:F:102:ASP:HA	2:F:121:ARG:HH11	1.83	0.44
2:F:26:ALA:CB	2:F:168:ILE:HD11	2.47	0.44
2:E:111:TYR:O	2:E:139:ARG:NE	2.38	0.44
1:D:21:ARG:NE	1:D:82:LEU:HD21	2.33	0.44
1:D:76:LYS:HD3	1:D:80:LYS:CE	2.47	0.44

Continued on next page...

Continued from previous page...

Atom-1	Atom-2	Distance(Å)	Clash(Å)
2:E:24:TRP:CD1	2:E:139:ARG:NH1	2.84	0.44
2:E:64:LEU:HB3	2:E:67:TRP:HE3	1.81	0.44
1:C:92:GLU:OE2	1:D:92:GLU:OE2	2.35	0.44
1:C:26:ILE:CD1	1:C:51:GLU:OE1	2.65	0.44
2:F:120:CYS:HA	2:F:132:SER:HB2	1.99	0.44
2:E:90:TYR:HE2	2:E:98:GLN:O	2.00	0.44
1:A:36:ALA:CB	1:A:40:THR:O	2.66	0.44
2:F:73:MET:HE2	3:F:2:RTL:H14	1.99	0.44
2:F:73:MET:HE3	3:F:2:RTL:H14	1.98	0.44
2:F:81:GLU:C	2:F:82:ASP:O	2.55	0.44
2:F:121:ARG:HD2	2:F:121:ARG:HA	1.37	0.44
2:F:84:ALA:O	2:F:86:PHE:CE2	2.71	0.44
1:B:102:PRO:CB	1:B:122:VAL:HG12	2.21	0.44
2:E:65:ASN:CB	2:E:66:ASN:HD21	2.17	0.44
1:B:88:HIS:ND1	1:B:116:TYR:HD2	2.11	0.44
1:B:90:HIS:HD2	1:B:92:GLU:HG3	1.76	0.44
1:C:79:TRP:O	1:C:82:LEU:HB2	2.17	0.44
1:C:100:SER:CB	2:E:91:TRP:CG	3.01	0.44
2:E:140:ASP:OD2	2:E:141:PRO:HD2	2.18	0.44
2:F:24:TRP:CZ2	2:F:139:ARG:NE	2.86	0.44
2:E:85:LYS:HA	2:E:105:TRP:HA	2.00	0.44
1:D:20:VAL:HG12	1:D:20:VAL:O	2.17	0.44
1:A:124:ASN:ND2	1:A:124:ASN:C	2.71	0.44
2:F:115:ALA:O	2:F:116:VAL:CG2	2.65	0.44
2:F:63:LEU:HD21	2:F:96:PHE:CE1	2.52	0.44
2:E:70:CYS:CB	2:E:182:LEU:HD12	2.38	0.44
1:D:79:TRP:HE3	1:D:79:TRP:HA	1.83	0.44
2:E:11:VAL:HB	2:E:84:ALA:HB2	1.95	0.44
1:D:71:VAL:HG23	1:D:93:VAL:HB	1.98	0.44
1:A:16:VAL:HG13	1:A:111:LEU:HD11	1.99	0.44
2:F:105:TRP:O	2:F:106:ILE:HG13	2.18	0.44
2:F:120:CYS:N	2:F:132:SER:HB2	2.32	0.44
2:F:90:TYR:HB3	3:F:2:RTL:H181	1.98	0.44
2:F:65:ASN:ND2	2:F:65:ASN:O	2.51	0.44
1:B:85:SER:OG	2:F:96:PHE:N	2.50	0.44
2:E:77:PHE:CE1	2:E:88:MET:CG	2.92	0.44
1:A:34:ARG:O	1:A:35:LYS:C	2.55	0.44
1:C:90:HIS:NE2	1:D:94:VAL:HG21	2.33	0.44
2:F:98:GLN:HB3	3:F:2:RTL:C13	2.48	0.43
2:E:24:TRP:CZ2	2:E:139:ARG:CZ	3.01	0.43
1:A:18:ASP:CG	1:A:21:ARG:H	2.21	0.43
1:A:41:TRP:CE3	1:A:70:LYS:NZ	2.72	0.43

Continued on next page...

Continued from previous page...

Atom-1	Atom-2	Distance(Å)	Clash(Å)
1:D:76:LYS:O	1:D:80:LYS:CB	2.66	0.43
1:B:88:HIS:ND1	1:B:116:TYR:HE2	2.16	0.43
1:D:11:PRO:O	1:D:12:LEU:C	2.56	0.43
2:E:77:PHE:CZ	2:E:88:MET:CG	3.01	0.43
2:E:30:LYS:HA	2:E:30:LYS:HD2	1.57	0.43
1:D:21:ARG:O	1:D:23:SER:HB3	2.18	0.43
1:B:66:GLU:OE2	1:B:98:ASN:OD1	2.37	0.43
1:B:11:PRO:HB2	1:B:59:THR:CG2	2.49	0.43
2:E:21:SER:O	2:E:45:PHE:O	2.36	0.43
1:D:73:ILE:HG22	1:D:75:THR:HG23	1.99	0.43
2:F:120:CYS:CA	2:F:132:SER:HB2	2.48	0.43
2:F:154:GLN:O	2:F:155:ARG:HG2	2.18	0.43
2:E:126:ASP:N	2:E:126:ASP:OD1	2.51	0.43
1:D:87:PHE:CE2	1:D:88:HIS:NE2	2.86	0.43
1:B:40:THR:HG23	1:B:41:TRP:N	2.32	0.43
2:F:29:LYS:HB3	2:F:29:LYS:NZ	2.34	0.43
2:F:38:GLN:NE2	2:F:62:ARG:CD	2.81	0.43
2:E:156:GLN:HG2	2:E:163:ALA:H	1.83	0.43
2:E:19:ARG:O	2:E:19:ARG:CG	2.66	0.43
2:E:30:LYS:NZ	2:E:161:LEU:HD11	2.34	0.43
1:A:79:TRP:CZ3	1:A:113:PRO:HG3	2.52	0.43
1:B:54:GLU:CB	1:B:56:HIS:HE1	2.25	0.43
2:E:48:ASP:O	2:E:49:GLU:C	2.57	0.43
1:B:33:PHE:CD1	1:B:33:PHE:N	2.86	0.43
2:F:8:SER:C	2:F:10:ARG:H	2.22	0.43
2:F:112:ASP:HA	2:F:139:ARG:HE	1.83	0.43
2:F:70:CYS:SG	2:F:173:TYR:C	2.97	0.43
1:D:66:GLU:HG2	1:D:98:ASN:CA	2.49	0.43
1:B:28:VAL:O	1:B:48:LYS:HA	2.18	0.43
1:A:87:PHE:CZ	1:B:95:PHE:CD2	3.06	0.43
2:F:131:ASP:O	2:F:131:ASP:OD2	2.36	0.43
2:F:92:GLY:HA3	2:F:97:LEU:CD1	2.49	0.43
2:E:104:HIS:CE1	2:E:117:GLN:NE2	2.80	0.43
1:C:70:LYS:HD2	1:C:92:GLU:CD	2.38	0.43
1:C:36:ALA:O	1:C:37:ALA:C	2.56	0.43
2:E:24:TRP:CH2	2:E:139:ARG:CD	2.90	0.43
2:F:15:PHE:HB3	2:F:83:PRO:HB2	2.01	0.43
1:B:82:LEU:O	2:F:35:LEU:HD12	2.18	0.43
2:F:24:TRP:CH2	2:F:111:TYR:O	2.72	0.43
2:F:124:ASN:O	2:F:125:LEU:C	2.57	0.43
2:F:6:VAL:HG12	2:F:118:TYR:OH	2.19	0.43
2:E:136:VAL:HG11	2:E:152:VAL:HG11	2.01	0.43

Continued on next page...

Continued from previous page...

Atom-1	Atom-2	Distance(Å)	Clash(Å)
2:F:42:VAL:CG1	2:F:43:ALA:N	2.80	0.43
2:F:119:SER:HB3	2:F:133:TYR:CE1	2.54	0.43
2:F:151:ILE:HG22	2:F:152:VAL:N	2.33	0.43
2:E:39:ASP:OD2	2:E:60:ARG:NH1	2.52	0.43
1:D:13:MET:HG3	1:D:56:HIS:NE2	2.34	0.43
1:B:85:SER:H	2:F:96:PHE:C	2.21	0.42
2:F:123:LEU:CD1	2:F:129:CYS:H	2.28	0.42
2:F:168:ILE:HG12	2:F:168:ILE:O	2.18	0.42
2:E:63:LEU:HD21	2:E:67:TRP:CH2	2.54	0.42
1:D:66:GLU:HG3	1:D:99:ASP:CG	2.40	0.42
1:D:34:ARG:CG	1:D:34:ARG:NH1	2.79	0.42
1:B:16:VAL:O	1:B:17:LEU:CD2	2.66	0.42
1:B:76:LYS:HG3	1:B:86:PRO:HG2	2.00	0.42
2:F:29:LYS:CA	2:F:165:TYR:CD1	3.01	0.42
2:F:66:ASN:C	2:F:67:TRP:O	2.48	0.42
2:F:79:ASP:O	2:F:87:LYS:HE3	2.19	0.42
2:F:90:TYR:CE2	2:F:98:GLN:O	2.71	0.42
2:E:117:GLN:HE22	2:E:133:TYR:HE1	1.65	0.42
1:C:69:TYR:N	1:C:69:TYR:HD1	2.16	0.42
1:C:94:VAL:HG12	1:D:89:GLU:CG	2.49	0.42
1:B:36:ALA:HB2	1:B:42:GLU:CD	2.39	0.42
2:F:19:ARG:HG2	2:F:111:TYR:CG	2.54	0.42
2:F:115:ALA:C	2:F:116:VAL:HG23	2.40	0.42
2:F:30:LYS:CE	2:F:31:ASP:O	2.67	0.42
1:A:11:PRO:HG2	1:A:12:LEU:H	1.84	0.42
2:F:156:GLN:HA	2:F:161:LEU:HD11	2.00	0.42
2:F:6:VAL:HA	2:F:9:PHE:CD1	2.54	0.42
2:F:90:TYR:HE2	2:F:98:GLN:HG2	1.84	0.42
2:E:9:PHE:CE2	2:E:160:CYS:N	2.88	0.42
2:F:48:ASP:O	2:F:50:THR:HG22	2.16	0.42
2:F:124:ASN:HD21	2:F:125:LEU:HG	1.80	0.42
2:F:156:GLN:C	2:F:161:LEU:HD21	2.40	0.42
2:F:60:ARG:HD3	2:F:173:TYR:CE2	2.54	0.42
2:E:173:TYR:CD2	2:E:173:TYR:O	2.55	0.42
1:B:98:ASN:O	1:B:103:ARG:HD3	2.18	0.42
2:F:89:LYS:O	2:F:89:LYS:HG2	2.17	0.42
2:E:5:ALA:CB	2:E:128:THR:OG1	2.59	0.42
2:E:148:ALA:O	2:E:152:VAL:HG23	2.20	0.42
1:D:76:LYS:O	1:D:80:LYS:HG3	2.19	0.42
1:C:94:VAL:HG12	1:D:89:GLU:CB	2.49	0.42
1:C:117:SER:HB2	1:D:117:SER:CB	2.49	0.42
1:B:24:PRO:HB3	1:B:52:SER:O	2.20	0.42

Continued on next page...

Continued from previous page...

Atom-1	Atom-2	Distance(Å)	Clash(Å)
2:F:158:GLU:CA	2:F:158:GLU:OE2	2.67	0.42
3:F:2:RTL:H152	3:F:2:RTL:H201	1.73	0.42
2:E:15:PHE:HA	2:E:111:TYR:HH	1.85	0.42
1:D:82:LEU:HA	1:D:82:LEU:HD12	1.73	0.42
1:C:100:SER:HB2	2:E:91:TRP:CD1	2.54	0.42
1:D:16:VAL:HG12	1:D:111:LEU:HD12	2.00	0.42
1:B:25:ALA:HB1	1:B:28:VAL:CG2	2.48	0.42
1:C:108:ALA:HB3	1:C:119:THR:HG22	2.02	0.42
1:C:32:VAL:HB	1:C:45:ALA:HB3	2.02	0.42
2:F:52:GLN:NE2	2:F:76:THR:CG2	2.83	0.42
2:E:5:ALA:HB1	2:E:128:THR:CB	2.48	0.42
2:E:6:VAL:HG23	2:E:128:THR:HG22	2.01	0.42
2:E:69:VAL:CG2	2:E:182:LEU:HD21	2.43	0.42
1:B:116:TYR:CD1	1:B:116:TYR:C	2.91	0.42
1:D:26:ILE:O	1:D:27:ASN:CB	2.53	0.42
2:F:28:ALA:CB	2:F:136:VAL:HG23	2.27	0.42
2:F:138:SER:CB	2:F:144:LEU:CD2	2.96	0.42
2:F:169:VAL:O	2:F:170:HIS:ND1	2.46	0.42
2:E:24:TRP:HB3	2:E:137:PHE:HD2	1.85	0.42
1:D:21:ARG:CG	2:E:64:LEU:HD11	2.50	0.42
1:A:112:SER:HB2	1:A:115:SER:O	2.19	0.42
2:E:37:LEU:HA	2:E:37:LEU:HD23	1.60	0.42
2:E:151:ILE:O	2:E:153:ALA:N	2.51	0.42
2:E:28:ALA:HB1	2:E:165:TYR:CA	2.50	0.42
2:E:69:VAL:HG23	2:E:182:LEU:HD11	2.01	0.42
2:E:11:VAL:CG1	2:E:84:ALA:HB1	2.50	0.42
2:F:24:TRP:HE3	2:F:137:PHE:HB3	1.85	0.41
2:F:169:VAL:O	2:F:170:HIS:CE1	2.73	0.41
3:F:2:RTL:C8	3:F:2:RTL:C18	2.98	0.41
1:B:55:LEU:HA	1:B:55:LEU:HD23	1.80	0.41
1:A:19:ALA:HB2	1:A:111:LEU:O	2.15	0.41
1:D:44:PHE:C	1:D:44:PHE:CD2	2.93	0.41
2:F:46:SER:O	2:F:47:VAL:HB	2.19	0.41
1:B:20:VAL:O	1:C:114:TYR:CD1	2.72	0.41
2:F:23:THR:H	2:F:139:ARG:HH12	1.67	0.41
2:E:135:PHE:CB	2:E:137:PHE:CZ	3.03	0.41
1:B:18:ASP:HB2	1:B:78:TYR:OH	2.20	0.41
2:F:19:ARG:HG2	2:F:111:TYR:HB3	2.03	0.41
2:F:66:ASN:OD1	2:F:66:ASN:N	2.52	0.41
2:E:5:ALA:C	2:E:129:CYS:HB3	2.41	0.41
1:B:14:VAL:HA	1:B:107:ILE:O	2.20	0.41
2:E:52:GLN:OE1	2:E:77:PHE:O	2.38	0.41

Continued on next page...

Continued from previous page...

Atom-1	Atom-2	Distance(Å)	Clash(Å)
1:D:73:ILE:HG22	1:D:75:THR:HG22	2.02	0.41
1:D:34:ARG:NH1	1:D:34:ARG:HG2	2.33	0.41
1:C:105:TYR:H	1:C:105:TYR:HD2	1.67	0.41
1:B:36:ALA:HB2	1:B:42:GLU:OE1	2.20	0.41
1:B:75:THR:O	1:B:78:TYR:HB3	2.20	0.41
2:F:120:CYS:HA	2:F:132:SER:CB	2.50	0.41
2:F:148:ALA:O	2:F:149:GLN:C	2.58	0.41
2:F:5:ALA:O	2:F:6:VAL:C	2.59	0.41
2:F:95:SER:HB2	2:F:96:PHE:H	1.50	0.41
2:F:45:PHE:CD2	2:F:55:ALA:CB	3.03	0.41
1:C:79:TRP:NE1	1:C:113:PRO:HA	2.36	0.41
2:F:92:GLY:C	2:F:94:ALA:H	2.23	0.41
2:E:108:ASP:HB2	2:E:155:ARG:HD3	2.02	0.41
2:E:114:TYR:CD1	2:E:114:TYR:C	2.89	0.41
1:A:70:LYS:HD3	1:A:94:VAL:CG2	2.46	0.41
1:A:114:TYR:CB	1:D:22:GLY:HA3	2.51	0.41
1:D:16:VAL:C	1:D:17:LEU:CD2	2.88	0.41
1:C:12:LEU:HD12	1:C:105:TYR:HB2	2.01	0.41
2:E:120:CYS:SG	2:E:122:LEU:O	2.79	0.41
2:E:29:LYS:NZ	2:E:166:ARG:HB3	2.35	0.41
2:E:73:MET:HA	2:E:73:MET:HE2	2.02	0.41
2:E:45:PHE:CE2	2:E:55:ALA:CB	3.01	0.41
1:B:82:LEU:O	2:F:35:LEU:CD1	2.69	0.41
2:F:60:ARG:HD2	2:F:68:ASP:OD1	2.21	0.41
2:E:24:TRP:HZ2	2:E:111:TYR:HA	1.86	0.41
2:E:144:LEU:HD23	2:E:144:LEU:N	2.36	0.41
1:D:21:ARG:CD	1:D:82:LEU:HD21	2.51	0.41
2:F:13:GLU:HB3	2:F:14:ASN:H	1.47	0.41
1:B:22:GLY:CA	1:C:114:TYR:CG	3.01	0.41
2:F:73:MET:CE	3:F:2:RTL:H12	2.51	0.41
2:F:81:GLU:CD	2:F:82:ASP:N	2.74	0.41
2:F:124:ASN:N	2:F:130:ALA:HB2	2.36	0.41
2:F:39:ASP:O	2:F:40:ASN:HB2	2.21	0.41
2:E:133:TYR:HD1	2:E:134:SER:N	2.19	0.41
1:A:20:VAL:CG2	1:A:79:TRP:HH2	2.32	0.41
1:D:79:TRP:CD1	1:D:86:PRO:HB3	2.50	0.41
2:F:15:PHE:CG	2:F:16:ASP:N	2.88	0.41
1:B:16:VAL:CG1	1:B:25:ALA:HB3	2.51	0.41
1:B:25:ALA:CB	1:B:28:VAL:HG21	2.50	0.41
2:F:99:LYS:HD3	2:F:99:LYS:C	2.40	0.41
1:D:74:ASP:OD2	1:D:77:SER:OG	2.37	0.41
1:B:76:LYS:O	1:B:77:SER:C	2.59	0.41

Continued on next page...

Continued from previous page...

Atom-1	Atom-2	Distance(Å)	Clash(Å)
1:D:42:GLU:O	1:D:43:PRO:C	2.57	0.41
1:B:20:VAL:CG2	1:B:113:PRO:HD3	2.51	0.41
2:F:109:THR:HA	2:F:114:TYR:CE1	2.56	0.41
2:F:29:LYS:HD2	2:F:135:PHE:CE1	2.56	0.41
2:E:112:ASP:O	2:E:113:THR:CB	2.69	0.41
2:E:11:VAL:CB	2:E:84:ALA:CB	2.89	0.41
2:F:81:GLU:CD	2:F:81:GLU:C	2.79	0.40
2:F:92:GLY:O	2:F:93:VAL:C	2.57	0.40
2:E:20:PHE:HB2	2:E:111:TYR:HD1	1.87	0.40
2:E:139:ARG:NH1	2:E:139:ARG:HG2	2.35	0.40
2:E:26:ALA:O	2:E:27:MET:CE	2.70	0.40
1:B:102:PRO:HD3	1:B:124:ASN:CA	2.49	0.40
1:A:32:VAL:HB	1:A:44:PHE:HB3	2.03	0.40
1:D:10:CYS:CB	1:D:56:HIS:CD2	3.02	0.40
1:C:101:GLY:O	1:C:103:ARG:HG2	2.22	0.40
1:C:105:TYR:N	1:C:105:TYR:HD2	2.19	0.40
2:F:53:MET:O	2:F:77:PHE:HB2	2.22	0.40
2:F:92:GLY:HA3	2:F:97:LEU:HB2	2.04	0.40
2:E:32:PRO:HD3	2:E:133:TYR:HA	2.03	0.40
1:A:33:PHE:O	1:A:70:LYS:N	2.54	0.40
1:B:97:ALA:C	1:B:103:ARG:NH1	2.75	0.40
1:D:12:LEU:CD2	1:D:58:LEU:CB	2.95	0.40
1:C:28:VAL:O	1:C:49:THR:HG23	2.22	0.40
2:E:23:THR:O	2:E:139:ARG:NH1	2.54	0.40
2:E:38:GLN:HG3	2:E:60:ARG:NH2	2.37	0.40
1:A:12:LEU:C	1:A:13:MET:CG	2.90	0.40

All (16) symmetry-related close contacts are listed below. The label for Atom-2 includes the symmetry operator and encoded unit-cell translations to be applied.

Atom-1	Atom-2	Distance(Å)	Clash(Å)
2:E:154:GLN:O	2:F:164:GLN:OE1[8_455]	1.44	0.76
2:E:8:SER:OG	2:F:128:THR:O[8_455]	1.57	0.63
2:F:27:MET:SD	2:F:126:ASP:OD1[4_444]	1.58	0.62
2:E:160:CYS:N	2:F:4:CYS:N[8_455]	1.74	0.46
2:E:163:ALA:N	2:F:157:GLU:OE1[8_455]	1.78	0.42
2:E:9:PHE:CE2	2:F:4:CYS:N[8_455]	1.82	0.38
2:E:157:GLU:OE2	2:F:160:CYS:O[8_455]	1.85	0.35
2:E:4:CYS:O	2:F:8:SER:OG[8_455]	1.87	0.33
2:E:158:GLU:O	2:F:4:CYS:SG[8_455]	1.87	0.33
2:E:157:GLU:CB	2:F:161:LEU:CA[8_455]	1.88	0.32
2:E:160:CYS:O	2:F:158:GLU:O[8_455]	1.89	0.31

Continued on next page...

Continued from previous page...

Atom-1	Atom-2	Distance(Å)	Clash(Å)
2:E:9:PHE:CD2	2:F:4:CYS:N[8_455]	1.95	0.25
2:E:156:GLN:O	2:F:161:LEU:N[8_455]	1.96	0.24
2:E:157:GLU:CA	2:F:161:LEU:N[8_455]	2.02	0.18
2:E:153:ALA:O	2:F:164:GLN:N[8_455]	2.09	0.11
2:E:5:ALA:CB	2:F:5:ALA:CB[8_455]	2.12	0.08

5.3 Torsion angles

5.3.1 Protein backbone ⓘ

In the following table, the Percentiles column shows the percent Ramachandran outliers of the chain as a percentile score with respect to all X-ray entries followed by that with respect to entries of similar resolution. The Analysed column shows the number of residues for which the backbone conformation was analysed, and the total number of residues.

Mol	Chain	Analysed	Favoured	Allowed	Outliers	Percentiles	
1	A	122/127 (96%)	102 (84%)	17 (14%)	3 (2%)	9	49
1	B	116/127 (91%)	84 (72%)	21 (18%)	11 (10%)	1	7
1	C	112/127 (88%)	94 (84%)	13 (12%)	5 (4%)	4	29
1	D	111/127 (87%)	94 (85%)	9 (8%)	8 (7%)	2	13
2	E	178/180 (99%)	96 (54%)	39 (22%)	43 (24%)	0	0
2	F	169/180 (94%)	90 (53%)	29 (17%)	50 (30%)	0	0
All	All	808/868 (93%)	560 (69%)	128 (16%)	120 (15%)	0	1

All (120) Ramachandran outliers are listed below:

Mol	Chain	Res	Type
1	A	98	ASN
1	B	50	SER
1	B	100	SER
1	C	11	PRO
1	D	57	GLY
1	D	100	SER
2	E	14	ASN
2	E	38	GLN
2	E	44	GLU
2	E	48	ASP
2	E	49	GLU
2	E	74	VAL

Continued on next page...

Continued from previous page...

Mol	Chain	Res	Type
2	E	79	ASP
2	E	83	PRO
2	E	95	SER
2	E	96	PHE
2	E	105	TRP
2	E	106	ILE
2	E	108	ASP
2	E	109	THR
2	E	111	TYR
2	E	114	TYR
2	E	125	LEU
2	E	126	ASP
2	E	128	THR
2	E	133	TYR
2	E	160	CYS
2	E	179	GLU
2	E	182	LEU
2	F	5	ALA
2	F	6	VAL
2	F	10	ARG
2	F	12	LYS
2	F	14	ASN
2	F	15	PHE
2	F	49	GLU
2	F	64	LEU
2	F	65	ASN
2	F	67	TRP
2	F	79	ASP
2	F	81	GLU
2	F	85	LYS
2	F	95	SER
2	F	96	PHE
2	F	105	TRP
2	F	113	THR
2	F	125	LEU
2	F	126	ASP
2	F	128	THR
2	F	145	PRO
2	F	148	ALA
2	F	149	GLN
2	F	161	LEU
1	B	90	HIS

Continued on next page...

Continued from previous page...

Mol	Chain	Res	Type
1	B	122	VAL
1	C	22	GLY
1	C	64	PHE
2	E	7	SER
2	E	21	SER
2	E	43	ALA
2	E	98	GLN
2	E	122	LEU
2	E	152	VAL
2	E	172	GLY
2	F	82	ASP
2	F	84	ALA
2	F	109	THR
2	F	131	ASP
2	F	156	GLN
2	F	159	LEU
2	F	162	ALA
2	F	169	VAL
2	F	170	HIS
2	F	172	GLY
1	A	50	SER
1	B	59	THR
1	B	125	PRO
2	E	55	ALA
2	E	65	ASN
2	E	80	THR
2	E	110	ASP
2	E	119	SER
2	E	162	ALA
2	F	27	MET
2	F	55	ALA
2	F	98	GLN
2	F	164	GLN
2	F	167	LEU
1	B	11	PRO
1	C	98	ASN
1	D	27	ASN
1	D	43	PRO
1	D	56	HIS
1	D	90	HIS
2	E	107	VAL
2	F	17	LYS

Continued on next page...

Continued from previous page...

Mol	Chain	Res	Type
2	F	130	ALA
2	F	158	GLU
2	E	31	ASP
2	E	35	LEU
2	E	132	SER
2	F	47	VAL
2	F	62	ARG
2	F	166	ARG
2	F	173	TYR
1	B	23	SER
1	C	86	PRO
2	E	47	VAL
2	F	29	LYS
1	B	43	PRO
1	A	10	CYS
1	B	121	VAL
2	F	127	GLY
1	D	101	GLY
1	D	121	VAL
2	E	93	VAL
2	E	141	PRO
2	F	106	ILE
1	B	101	GLY
2	F	141	PRO

5.3.2 Protein sidechains ⓘ

In the following table, the Percentiles column shows the percent sidechain outliers of the chain as a percentile score with respect to all X-ray entries followed by that with respect to entries of similar resolution. The Analysed column shows the number of residues for which the sidechain conformation was analysed, and the total number of residues.

Mol	Chain	Analysed	Rotameric	Outliers	Percentiles	
1	A	102/105 (97%)	86 (84%)	16 (16%)	4	17
1	B	99/105 (94%)	90 (91%)	9 (9%)	14	47
1	C	95/105 (90%)	77 (81%)	18 (19%)	2	11
1	D	94/105 (90%)	79 (84%)	15 (16%)	3	16
2	E	153/153 (100%)	110 (72%)	43 (28%)	0	2
2	F	145/153 (95%)	103 (71%)	42 (29%)	0	1
All	All	688/726 (95%)	545 (79%)	143 (21%)	2	8

All (143) residues with a non-rotameric sidechain are listed below:

Mol	Chain	Res	Type
1	A	13	MET
1	A	21	ARG
1	A	34	ARG
1	A	38	ASP
1	A	39	ASP
1	A	41	TRP
1	A	46	SER
1	A	55	LEU
1	A	59	THR
1	A	64	PHE
1	A	76	LYS
1	A	77	SER
1	A	82	LEU
1	A	96	THR
1	A	103	ARG
1	A	124	ASN
1	B	13	MET
1	B	18	ASP
1	B	21	ARG
1	B	23	SER
1	B	34	ARG
1	B	55	LEU
1	B	63	GLN
1	B	74	ASP
1	B	112	SER
1	C	10	CYS
1	C	15	LYS
1	C	16	VAL
1	C	35	LYS
1	C	38	ASP
1	C	46	SER
1	C	55	LEU
1	C	59	THR
1	C	66	GLU
1	C	68	ILE
1	C	69	TYR
1	C	79	TRP
1	C	82	LEU
1	C	98	ASN
1	C	105	TYR
1	C	115	SER
1	C	117	SER

Continued on next page...

Continued from previous page...

Mol	Chain	Res	Type
1	C	119	THR
1	D	13	MET
1	D	48	LYS
1	D	51	GLU
1	D	55	LEU
1	D	56	HIS
1	D	63	GLN
1	D	69	TYR
1	D	71	VAL
1	D	76	LYS
1	D	80	LYS
1	D	82	LEU
1	D	110	LEU
1	D	112	SER
1	D	115	SER
1	D	119	THR
2	E	4	CYS
2	E	11	VAL
2	E	14	ASN
2	E	15	PHE
2	E	17	LYS
2	E	27	MET
2	E	29	LYS
2	E	31	ASP
2	E	35	LEU
2	E	39	ASP
2	E	50	THR
2	E	52	GLN
2	E	54	SER
2	E	66	ASN
2	E	70	CYS
2	E	80	THR
2	E	82	ASP
2	E	88	MET
2	E	89	LYS
2	E	99	LYS
2	E	109	THR
2	E	110	ASP
2	E	114	TYR
2	E	119	SER
2	E	121	ARG
2	E	122	LEU

Continued on next page...

Continued from previous page...

Mol	Chain	Res	Type
2	E	125	LEU
2	E	126	ASP
2	E	128	THR
2	E	131	ASP
2	E	133	TYR
2	E	137	PHE
2	E	139	ARG
2	E	144	LEU
2	E	147	GLU
2	E	155	ARG
2	E	156	GLN
2	E	158	GLU
2	E	160	CYS
2	E	164	GLN
2	E	173	TYR
2	E	175	ASP
2	E	182	LEU
2	F	14	ASN
2	F	21	SER
2	F	29	LYS
2	F	30	LYS
2	F	31	ASP
2	F	36	PHE
2	F	38	GLN
2	F	44	GLU
2	F	50	THR
2	F	56	THR
2	F	58	LYS
2	F	62	ARG
2	F	63	LEU
2	F	65	ASN
2	F	69	VAL
2	F	78	THR
2	F	80	THR
2	F	81	GLU
2	F	89	LYS
2	F	99	LYS
2	F	103	ASP
2	F	114	TYR
2	F	121	ARG
2	F	122	LEU
2	F	123	LEU

Continued on next page...

Continued from previous page...

Mol	Chain	Res	Type
2	F	124	ASN
2	F	126	ASP
2	F	132	SER
2	F	133	TYR
2	F	139	ARG
2	F	144	LEU
2	F	151	ILE
2	F	156	GLN
2	F	157	GLU
2	F	158	GLU
2	F	159	LEU
2	F	161	LEU
2	F	166	ARG
2	F	167	LEU
2	F	168	ILE
2	F	171	ASN
2	F	173	TYR

Some sidechains can be flipped to improve hydrogen bonding and reduce clashes. All (21) such sidechains are listed below:

Mol	Chain	Res	Type
1	A	90	HIS
1	A	124	ASN
1	B	88	HIS
1	C	98	ASN
1	D	27	ASN
1	D	88	HIS
1	D	90	HIS
2	E	14	ASN
2	E	38	GLN
2	E	65	ASN
2	E	66	ASN
2	E	98	GLN
2	E	104	HIS
2	E	156	GLN
2	F	14	ASN
2	F	38	GLN
2	F	52	GLN
2	F	65	ASN
2	F	98	GLN
2	F	124	ASN
2	F	164	GLN

5.3.3 RNA ⓘ

There are no RNA chains in this entry.

5.4 Non-standard residues in protein, DNA, RNA chains ⓘ

There are no non-standard protein/DNA/RNA residues in this entry.

5.5 Carbohydrates ⓘ

There are no carbohydrates in this entry.

5.6 Ligand geometry ⓘ

2 ligands are modelled in this entry.

In the following table, the Counts columns list the number of bonds (or angles) for which Mogul statistics could be retrieved, the number of bonds (or angles) that are observed in the model and the number of bonds (or angles) that are defined in the chemical component dictionary. The Link column lists molecule types, if any, to which the group is linked. The Z score for a bond length (or angle) is the number of standard deviations the observed value is removed from the expected value. A bond length (or angle) with $|Z| > 2$ is considered an outlier worth inspection. RMSZ is the root-mean-square of all Z scores of the bond lengths (or angles).

Mol	Type	Chain	Res	Link	Bond lengths			Bond angles		
					Counts	RMSZ	$\# Z > 2$	Counts	RMSZ	$\# Z > 2$
3	RTL	E	1	-	21,21,21	1.29	2 (9%)	28,28,28	6.16	19 (67%)
3	RTL	F	2	-	21,21,21	1.41	2 (9%)	28,28,28	6.06	19 (67%)

In the following table, the Chirals column lists the number of chiral outliers, the number of chiral centers analysed, the number of these observed in the model and the number defined in the chemical component dictionary. Similar counts are reported in the Torsion and Rings columns. '-' means no outliers of that kind were identified.

Mol	Type	Chain	Res	Link	Chirals	Torsions	Rings
3	RTL	E	1	-	-	0/14/31/31	0/1/1/1
3	RTL	F	2	-	-	0/14/31/31	0/1/1/1

All (4) bond length outliers are listed below:

Mol	Chain	Res	Type	Atoms	Z	Observed(Å)	Ideal(Å)
3	E	1	RTL	C15-C14	-3.55	1.45	1.50

Continued on next page...

Continued from previous page...

Mol	Chain	Res	Type	Atoms	Z	Observed(Å)	Ideal(Å)
3	F	2	RTL	C15-C14	-2.99	1.45	1.50
3	F	2	RTL	C5-C6	2.61	1.38	1.34
3	E	1	RTL	C5-C6	2.15	1.37	1.34

All (38) bond angle outliers are listed below:

Mol	Chain	Res	Type	Atoms	Z	Observed(°)	Ideal(°)
3	E	1	RTL	C15-C14-C13	-15.14	109.36	126.55
3	F	2	RTL	C15-C14-C13	-14.46	110.13	126.55
3	E	1	RTL	C19-C9-C10	13.10	141.50	122.92
3	F	2	RTL	C11-C10-C9	-12.80	108.86	127.29
3	F	2	RTL	C19-C9-C10	12.77	141.03	122.92
3	E	1	RTL	C11-C10-C9	-12.53	109.23	127.29
3	E	1	RTL	C1-C6-C5	-11.71	105.64	122.60
3	F	2	RTL	C1-C6-C5	-11.11	106.51	122.60
3	F	2	RTL	C7-C8-C9	-8.52	113.47	126.22
3	E	1	RTL	C8-C9-C10	-8.16	106.43	118.97
3	E	1	RTL	C20-C13-C14	-7.84	107.70	123.66
3	F	2	RTL	C20-C13-C14	-7.69	108.02	123.66
3	E	1	RTL	C7-C8-C9	-7.36	115.20	126.22
3	F	2	RTL	C8-C9-C10	-7.30	107.76	118.97
3	E	1	RTL	C12-C13-C14	-6.77	107.02	118.52
3	F	2	RTL	C12-C13-C14	-6.44	107.58	118.52
3	F	2	RTL	C17-C1-C6	4.99	118.60	110.33
3	E	1	RTL	C17-C1-C6	4.74	118.17	110.33
3	F	2	RTL	C11-C12-C13	-4.73	112.89	126.38
3	E	1	RTL	C11-C12-C13	-4.58	113.29	126.38
3	E	1	RTL	C10-C11-C12	-4.46	108.20	123.24
3	F	2	RTL	C19-C9-C8	-4.26	111.21	118.09
3	F	2	RTL	C10-C11-C12	-3.89	110.12	123.24
3	E	1	RTL	C16-C1-C6	-3.87	103.93	110.33
3	E	1	RTL	C19-C9-C8	-3.73	112.07	118.09
3	F	2	RTL	C16-C1-C6	-3.55	104.45	110.33
3	F	2	RTL	C7-C6-C5	-3.19	113.94	121.57
3	E	1	RTL	C7-C6-C5	-2.90	114.64	121.57
3	F	2	RTL	C18-C5-C4	-2.88	108.05	113.34
3	E	1	RTL	C18-C5-C4	-2.81	108.19	113.34
3	E	1	RTL	C2-C1-C6	2.65	114.84	110.44
3	F	2	RTL	C2-C1-C6	2.56	114.69	110.44
3	F	2	RTL	C16-C1-C2	-2.48	98.67	108.73
3	F	2	RTL	C20-C13-C12	-2.47	114.10	118.09
3	F	2	RTL	C4-C5-C6	2.41	126.06	122.84

Continued on next page...

Continued from previous page...

Mol	Chain	Res	Type	Atoms	Z	Observed(°)	Ideal(°)
3	E	1	RTL	C16-C1-C2	-2.36	99.18	108.73
3	E	1	RTL	C4-C5-C6	2.36	125.99	122.84
3	E	1	RTL	C20-C13-C12	-2.32	114.34	118.09

There are no chirality outliers.

There are no torsion outliers.

There are no ring outliers.

5.7 Other polymers ⓘ

There are no such residues in this entry.

5.8 Polymer linkage issues

There are no chain breaks in this entry.

6 Fit of model and data ⓘ

6.1 Protein, DNA and RNA chains ⓘ

EDS was not executed - this section will therefore be empty.

6.2 Non-standard residues in protein, DNA, RNA chains ⓘ

EDS was not executed - this section will therefore be empty.

6.3 Carbohydrates ⓘ

EDS was not executed - this section will therefore be empty.

6.4 Ligands ⓘ

EDS was not executed - this section will therefore be empty.

6.5 Other polymers ⓘ

EDS was not executed - this section will therefore be empty.