



Full wwPDB X-ray Structure Validation Report ⓘ

Feb 27, 2014 – 12:17 AM GMT

PDB ID : 2QA8
Title : Crystal Structure of the Estrogen Receptor Alpha Ligand Binding Domain Mutant 537S Complexed with Genistein
Authors : Nettles, K.W.; Bruning, J.B.; Nowak, J.; Sharma, S.K.; Hahm, J.B.; Shi, Y.; Kulp, K.; Hochberg, R.B.; Zhou, H.; Katzenellenbogen, J.A.; Katzenellenbogen, B.S.; Kim, Y.; Joachmiak, A.; Greene, G.L.
Deposited on : 2007-06-14
Resolution : 1.85 Å(reported)

This is a full wwPDB validation report for a publicly released PDB entry.
We welcome your comments at validation@mail.wwpdb.org
A user guide is available at <http://wwpdb.org/ValidationPDFNotes.html>

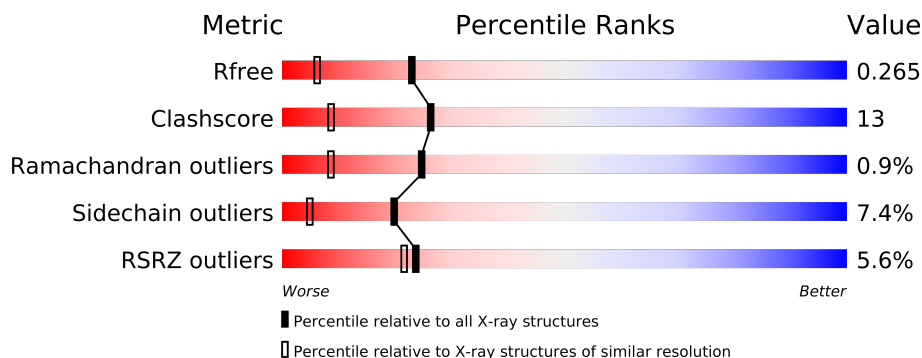
The following versions of software and data (see [references](#)) were used in the production of this report:

MolProbity : 4.02b-467
Mogul : 1.15 2013
Xtriage (Phenix) : dev-1323
EDS : stable22639
Percentile statistics : 21963
Refmac : 5.8.0049
CCP4 : 6.3.0 (Settle)
Ideal geometry (proteins) : Engh & Huber (2001)
Ideal geometry (DNA, RNA) : Parkinson et. al. (1996)
Validation Pipeline (wwPDB-VP) : stable22683

1 Overall quality at a glance

The reported resolution of this entry is 1.85 Å.

Percentile scores (ranging between 0-100) for global validation metrics of the entry are shown in the following graphic. The table shows the number of entries on which the scores are based.



Metric	Whole archive (#Entries)	Similar resolution (#Entries, resolution range(Å))
R_{free}	66092	1269 (1.86-1.86)
Clashscore	79885	1470 (1.86-1.86)
Ramachandran outliers	78287	1451 (1.86-1.86)
Sidechain outliers	78261	1451 (1.86-1.86)
RSRZ outliers	66119	1269 (1.86-1.86)

The table below summarises the geometric issues observed across the polymeric chains and their fit to the electron density. The red, orange, yellow and green segments on the lower bar indicate the fraction of residues that contain outliers for ≥ 3 , 2, 1 and 0 types of geometric quality criteria. The upper red bar (where present) indicates the fraction of residues that have poor fit to the electron density.

Mol	Chain	Length	Quality of chain
1	A	258	
2	B	258	
3	C	13	
3	D	13	

2 Entry composition

There are 5 unique types of molecules in this entry. The entry contains 4015 atoms, of which 0 are hydrogen and 0 are deuterium.

In the tables below, the ZeroOcc column contains the number of atoms modelled with zero occupancy, the AltConf column contains the number of residues with at least one atom in alternate conformation and the Trace column contains the number of residues modelled with at most 2 atoms.

- Molecule 1 is a protein called Estrogen receptor.

Mol	Chain	Residues	Atoms					ZeroOcc	AltConf	Trace
1	A	230	Total	C	N	O	S	0	2	0
			1843	1178	314	330	21			

There are 3 discrepancies between the modelled and reference sequences:

Chain	Residue	Modelled	Actual	Comment	Reference
A	297	SER	-	CLONING ARTIFACT	UNP P03372
A	530	CME	CYS	MODIFIED RESIDUE	UNP P03372
A	537	SER	TYR	ENGINEERED	UNP P03372

- Molecule 2 is a protein called Estrogen receptor.

Mol	Chain	Residues	Atoms					ZeroOcc	AltConf	Trace
2	B	235	Total	C	N	O	S	0	4	0
			1894	1215	322	336	21			

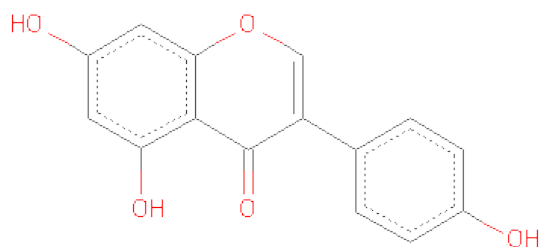
There are 3 discrepancies between the modelled and reference sequences:

Chain	Residue	Modelled	Actual	Comment	Reference
B	297	SER	-	CLONING ARTIFACT	UNP P03372
B	381	CME	CYS	MODIFIED RESIDUE	UNP P03372
B	537	SER	TYR	ENGINEERED	UNP P03372

- Molecule 3 is a protein called nuclear receptor coactivator 2.

Mol	Chain	Residues	Atoms				ZeroOcc	AltConf	Trace
3	C	10	Total	C	N	O	0	0	0
			89	57	19	13			
3	D	9	Total	C	N	O	0	0	0
			79	51	16	12			

- Molecule 4 is GENISTEIN (three-letter code: GEN) (formula: C₁₅H₁₀O₅).



Mol	Chain	Residues	Atoms			ZeroOcc	AltConf
4	A	1	Total	C	O	0	0
			20	15	5		
4	B	1	Total	C	O	0	0
			20	15	5		

- Molecule 5 is water.

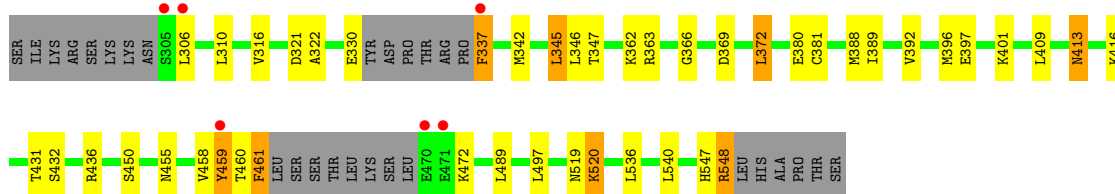
Mol	Chain	Residues	Atoms		ZeroOcc	AltConf
5	A	38	Total	O	0	0
			38	38		
5	B	32	Total	O	0	0
			32	32		

3 Residue-property plots

These plots are drawn for all protein, RNA and DNA chains in the entry. The first graphic for a chain summarises the proportions of errors displayed in the second graphic. The second graphic shows the sequence view annotated by issues in geometry and electron density. Residues are color-coded according to the number of geometric quality criteria for which they contain at least one outlier: green = 0, yellow = 1, orange = 2 and red = 3 or more. A red dot above a residue indicates a poor fit to the electron density ($RSRZ > 2$). Stretches of 2 or more consecutive residues without any outlier are shown as a green connector. Residues present in the sample, but not in the model, are shown in grey.

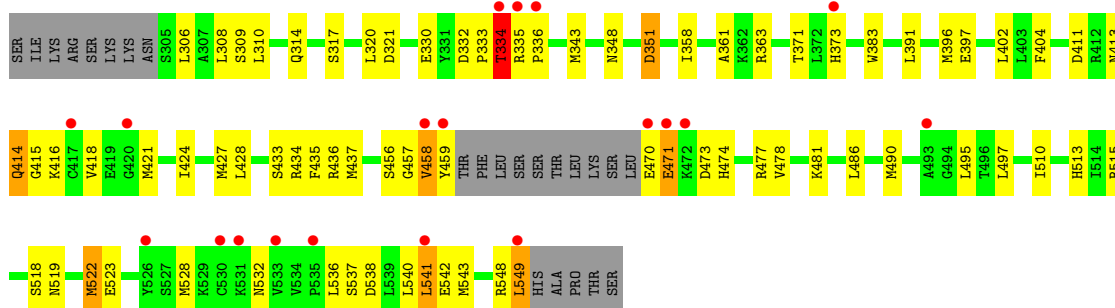
- Molecule 1: Estrogen receptor

Chain A: 



- Molecule 2: Estrogen receptor

Chain B: 



- Molecule 3: nuclear receptor coactivator 2

Chain C: 



- Molecule 3: nuclear receptor coactivator 2

Chain D: 



4 Data and refinement statistics

Property	Value	Source
Space group	P 1 21 1	Depositor
Cell constants a, b, c, α , β , γ	55.67Å 77.96Å 58.00Å 90.00° 109.05° 90.00°	Depositor
Resolution (Å)	19.89 – 1.85 19.89 – 1.85	Depositor EDS
% Data completeness (in resolution range)	96.8 (19.89-1.85) 96.9 (19.89-1.85)	Depositor EDS
R_{merge}	0.05	Depositor
R_{sym}	0.05	Depositor
$\langle I/\sigma(I) \rangle$ ¹	2.18 (at 1.85Å)	Xtriage
Refinement program	REFMAC 5.2.0005	Depositor
R, R_{free}	0.211 , 0.264 0.211 , 0.265	Depositor DCC
R_{free} test set	1935 reflections (5.29%)	DCC
Wilson B-factor (Å ²)	26.5	Xtriage
Anisotropy	0.237	Xtriage
Bulk solvent k_{sol} (e/Å ³), B_{sol} (Å ²)	0.37 , 62.8	EDS
Estimated twinning fraction	0.035 for l,-k,h	Xtriage
L-test for twinning	$\langle L \rangle = 0.47$, $\langle L^2 \rangle = 0.30$	Xtriage
Outliers	0 of 38516 reflections	Xtriage
F_o, F_c correlation	0.95	EDS
Total number of atoms	4015	wwPDB-VP
Average B, all atoms (Å ²)	48.0	wwPDB-VP

Xtriage's analysis on translational NCS is as follows: *The largest off-origin peak in the Patterson function is 7.97% of the height of the origin peak. No significant pseudotranslation is detected.*

¹Intensities estimated from amplitudes.

5 Model quality

5.1 Standard geometry

Bond lengths and bond angles in the following residue types are not validated in this section: CME, GEN

The Z score for a bond length (or angle) is the number of standard deviations the observed value is removed from the expected value. A bond length (or angle) with $|Z| > 5$ is considered an outlier worth inspection. RMSZ is the root-mean-square of all Z scores of the bond lengths (or angles).

Mol	Chain	Bond lengths		Bond angles	
		RMSZ	$\# Z > 5$	RMSZ	$\# Z > 5$
1	A	0.48	0/1870	0.66	0/2518
2	B	0.43	0/1933	0.60	0/2609
3	C	0.48	0/90	0.61	0/119
3	D	0.36	0/79	0.63	0/104
All	All	0.46	0/3972	0.63	0/5350

There are no bond length outliers.

There are no bond angle outliers.

There are no chirality outliers.

There are no planarity outliers.

5.2 Close contacts

In the following table, the Non-H and H(model) columns list the number of non-hydrogen atoms and hydrogen atoms in the chain respectively. The H(added) column lists the number of hydrogens added by MolProbity. The Clashes column lists the number of clashes within the asymmetric unit, and the number in parentheses is this value normalized per 1000 atoms of the molecule in the chain. The Symm-Clashes column gives symmetry related clashes, in the same way as for the Clashes column.

Mol	Chain	Non-H	H(model)	H(added)	Clashes	Symm-Clashes
1	A	1843	0	1887	37	0
2	B	1894	0	1953	74	0
3	C	89	0	95	4	0
3	D	79	0	88	4	0
4	A	20	0	8	0	0
4	B	20	0	9	0	0
5	A	38	0	0	1	0
5	B	32	0	0	4	0

Continued on next page...

Continued from previous page...

Mol	Chain	Non-H	H(model)	H(added)	Clashes	Symm-Clashes
All	All	4015	0	4040	106	0

Clashscore is defined as the number of clashes calculated for the entry per 1000 atoms (including hydrogens) of the entry. The overall clashscore for this entry is 13.

All (106) close contacts within the same asymmetric unit are listed below.

Atom-1	Atom-2	Distance(Å)	Clash(Å)
2:B:391[B]:LEU:CD1	2:B:402[B]:LEU:HD22	1.57	1.35
1:A:547:HIS:O	1:A:548:ARG:HG3	1.60	1.00
1:A:519:ASN:ND2	2:B:519:ASN:HD22	1.60	1.00
1:A:519:ASN:HD22	2:B:519:ASN:ND2	1.61	0.99
2:B:391[B]:LEU:CD1	2:B:402[B]:LEU:CD2	2.42	0.97
2:B:391[B]:LEU:HD11	2:B:402[B]:LEU:CD2	1.94	0.97
2:B:391[B]:LEU:HD11	2:B:402[B]:LEU:HD22	0.97	0.95
1:A:396:MET:O	1:A:436:ARG:HD3	1.68	0.94
1:A:519:ASN:HD22	2:B:519:ASN:HD22	0.95	0.90
2:B:457:GLY:O	2:B:459:TYR:N	2.08	0.87
2:B:332:ASP:OD2	2:B:334:THR:HG23	1.82	0.80
2:B:351:ASP:OD2	2:B:537:SER:HB2	1.82	0.80
2:B:391[B]:LEU:HD13	2:B:402[B]:LEU:HD22	1.61	0.79
3:C:687:HIS:CE1	3:C:691:HIS:HB3	2.18	0.79
1:A:497:LEU:HD11	2:B:497:LEU:HD11	1.67	0.77
2:B:391[B]:LEU:HD13	2:B:402[B]:LEU:CD2	2.14	0.75
2:B:473:ASP:O	2:B:477:ARG:HG3	1.86	0.74
1:A:372:LEU:HD21	3:C:691:HIS:NE2	2.02	0.74
2:B:413:ASN:HA	2:B:416:LYS:HE3	1.68	0.74
2:B:538:ASP:O	2:B:542:GLU:HG3	1.88	0.73
2:B:411:ASP:H	2:B:414:GLN:HE21	1.34	0.72
1:A:397:GLU:HG2	5:A:605:HOH:O	1.91	0.70
2:B:486:LEU:O	2:B:490:MET:HG3	1.91	0.70
2:B:334:THR:O	2:B:334:THR:OG1	2.09	0.70
1:A:413:ASN:HD22	1:A:416:LYS:NZ	1.90	0.70
2:B:456:SER:HA	2:B:515:ARG:NH2	2.08	0.69
1:A:388:MET:O	1:A:392:VAL:HG12	1.93	0.68
2:B:548:ARG:O	2:B:549:LEU:HB2	1.97	0.65
2:B:309:SER:HB2	5:B:659:HOH:O	1.97	0.64
2:B:396:MET:O	2:B:436:ARG:HD3	1.99	0.63
2:B:333:PRO:O	2:B:335:ARG:N	2.31	0.62
2:B:397:GLU:HG2	5:B:648:HOH:O	1.99	0.62
1:A:459:TYR:CZ	2:B:513:HIS:HB2	2.36	0.60
2:B:434:ARG:HH11	2:B:437:MET:HE3	1.67	0.59
2:B:456:SER:HB2	5:B:635:HOH:O	2.03	0.57

Continued on next page...

Continued from previous page...

Atom-1	Atom-2	Distance(Å)	Clash(Å)
2:B:470:GLU:N	2:B:473:ASP:HB3	2.19	0.57
2:B:433:SER:O	2:B:437:MET:HG3	2.03	0.57
1:A:392:VAL:HG23	1:A:432:SER:CA	2.36	0.56
1:A:459:TYR:CE2	2:B:513:HIS:HB2	2.41	0.55
1:A:413:ASN:HD22	1:A:416:LYS:HZ2	1.52	0.55
1:A:337:PHE:HE1	1:A:345:LEU:CD2	2.20	0.55
2:B:343:MET:HE1	2:B:421:MET:HE2	1.89	0.54
2:B:343:MET:HE1	2:B:421:MET:CE	2.37	0.54
2:B:310:LEU:HD22	2:B:314:GLN:HB3	1.90	0.54
2:B:536:LEU:HB2	2:B:541:LEU:HD13	1.90	0.54
2:B:358:ILE:HD11	3:D:690:LEU:HD12	1.89	0.53
1:A:389:ILE:HA	1:A:392:VAL:CG1	2.39	0.53
2:B:383:TRP:NE1	2:B:543:MET:HB3	2.24	0.52
2:B:358:ILE:HG23	3:D:694:LEU:HD13	1.92	0.52
2:B:434:ARG:HH11	2:B:437:MET:CE	2.23	0.52
2:B:308:LEU:HA	2:B:481:LYS:HD2	1.92	0.52
1:A:401:LYS:HD3	1:A:409:LEU:HG	1.90	0.51
1:A:347:THR:HG21	1:A:536:LEU:CD2	2.41	0.51
2:B:456:SER:HA	2:B:515:ARG:HH22	1.75	0.51
1:A:413:ASN:ND2	1:A:416:LYS:NZ	2.59	0.51
1:A:389:ILE:HA	1:A:392:VAL:HG12	1.91	0.51
2:B:518:SER:O	2:B:522[A]:MET:HG2	2.11	0.50
1:A:392:VAL:HG23	1:A:432:SER:HA	1.94	0.50
2:B:519:ASN:O	2:B:523:GLU:HG2	2.12	0.50
2:B:424:ILE:HA	2:B:427:MET:CE	2.42	0.49
2:B:358:ILE:HD11	3:D:690:LEU:CD1	2.43	0.49
2:B:424:ILE:HA	2:B:427:MET:HE2	1.94	0.49
2:B:330:GLU:HG2	2:B:348:ASN:ND2	2.28	0.49
1:A:372:LEU:HD21	3:C:691:HIS:HE2	1.78	0.49
2:B:474:HIS:O	2:B:478:VAL:HG23	2.13	0.48
2:B:348:ASN:ND2	5:B:613:HOH:O	2.28	0.48
1:A:316:VAL:HG21	1:A:489:LEU:HD21	1.96	0.48
1:A:413:ASN:ND2	1:A:416:LYS:HZ1	2.13	0.47
2:B:343:MET:HE1	2:B:418:VAL:HG11	1.96	0.47
1:A:322:ALA:HB1	1:A:363:ARG:HB2	1.97	0.46
2:B:402[B]:LEU:HD21	2:B:428:LEU:HB3	1.98	0.46
2:B:373:HIS:C	2:B:373:HIS:ND1	2.68	0.46
2:B:435:PHE:HE1	2:B:510:ILE:HG21	1.81	0.45
2:B:343:MET:SD	2:B:528:MET:HG3	2.55	0.45
2:B:371:THR:HG23	2:B:471:GLU:OE1	2.16	0.45
1:A:520:LYS:N	1:A:520:LYS:HD2	2.31	0.45
2:B:537:SER:HB3	2:B:540:LEU:HB2	1.98	0.45

Continued on next page...

Continued from previous page...

Atom-1	Atom-2	Distance(Å)	Clash(Å)
2:B:481:LYS:HE3	2:B:481:LYS:HB3	1.78	0.44
2:B:332:ASP:C	2:B:332:ASP:OD2	2.56	0.44
1:A:392:VAL:HG21	1:A:431:THR:HG22	1.99	0.44
1:A:337:PHE:HE1	1:A:345:LEU:HD22	1.83	0.43
1:A:540:LEU:HA	1:A:540:LEU:HD12	1.76	0.43
2:B:343:MET:CE	2:B:421:MET:HE1	2.49	0.43
2:B:358:ILE:CD1	3:D:690:LEU:HD12	2.48	0.43
2:B:391[A]:LEU:HD13	2:B:404:PHE:HA	2.00	0.43
1:A:459:TYR:C	1:A:461:PHE:H	2.22	0.43
1:A:306:LEU:HD22	1:A:306:LEU:H	1.83	0.43
2:B:458:VAL:O	2:B:458:VAL:HG22	2.19	0.42
2:B:415:GLY:O	2:B:421:MET:HB3	2.19	0.42
2:B:414:GLN:HG2	2:B:414:GLN:H	1.61	0.42
1:A:366:GLY:O	1:A:369:ASP:HB2	2.19	0.42
2:B:361:ALA:C	2:B:363:ARG:N	2.73	0.42
2:B:490:MET:HB3	2:B:495[A]:LEU:HD12	2.02	0.41
1:A:455:ASN:O	1:A:458:VAL:HG12	2.20	0.41
2:B:434:ARG:HD2	2:B:437:MET:HE3	2.02	0.41
1:A:380:GLU:HG3	3:C:690:LEU:HD23	2.02	0.41
2:B:457:GLY:C	2:B:459:TYR:N	2.73	0.41
1:A:458:VAL:HG13	1:A:459:TYR:N	2.36	0.41
2:B:373:HIS:ND1	2:B:373:HIS:O	2.54	0.41
2:B:343:MET:CE	2:B:421:MET:CE	2.99	0.41
1:A:392:VAL:CG2	1:A:432:SER:HA	2.51	0.40
1:A:461:PHE:HB2	1:A:472:LYS:HE3	2.02	0.40
2:B:320:LEU:HA	2:B:320:LEU:HD23	1.90	0.40
2:B:306:LEU:HD13	2:B:306:LEU:HA	1.82	0.40

There are no symmetry-related clashes.

5.3 Torsion angles

5.3.1 Protein backbone ⓘ

In the following table, the Percentiles column shows the percent Ramachandran outliers of the chain as a percentile score with respect to all X-ray entries followed by that with respect to entries of similar resolution. The Analysed column shows the number of residues for which the backbone conformation was analysed, and the total number of residues.

Mol	Chain	Analysed	Favoured	Allowed	Outliers	Percentiles
1	A	224/258 (87%)	222 (99%)	1 (0%)	1 (0%)	43 24

Continued on next page...

Continued from previous page...

Mol	Chain	Analysed	Favoured	Allowed	Outliers	Percentiles	
2	B	234/258 (91%)	223 (95%)	8 (3%)	3 (1%)	18	4
3	C	8/13 (62%)	8 (100%)	0	0	100	100
3	D	7/13 (54%)	7 (100%)	0	0	100	100
All	All	473/542 (87%)	460 (97%)	9 (2%)	4 (1%)	25	10

All (4) Ramachandran outliers are listed below:

Mol	Chain	Res	Type
2	B	334	THR
2	B	458	VAL
1	A	460	THR
2	B	336	PRO

5.3.2 Protein sidechains ⓘ

In the following table, the Percentiles column shows the percent sidechain outliers of the chain as a percentile score with respect to all X-ray entries followed by that with respect to entries of similar resolution. The Analysed column shows the number of residues for which the sidechain conformation was analysed, and the total number of residues.

Mol	Chain	Analysed	Rotameric	Outliers	Percentiles	
1	A	207/232 (89%)	190 (92%)	17 (8%)	17	3
2	B	214/232 (92%)	203 (95%)	11 (5%)	33	13
3	C	10/13 (77%)	8 (80%)	2 (20%)	2	0
3	D	9/13 (69%)	5 (56%)	4 (44%)	0	0
All	All	440/490 (90%)	406 (92%)	34 (8%)	20	4

All (34) residues with a non-rotameric sidechain are listed below:

Mol	Chain	Res	Type
1	A	310	LEU
1	A	321	ASP
1	A	330[A]	GLU
1	A	330[B]	GLU
1	A	337	PHE
1	A	342	MET
1	A	345	LEU
1	A	346	LEU

Continued on next page...

Continued from previous page...

Mol	Chain	Res	Type
1	A	362	LYS
1	A	372	LEU
1	A	381	CYS
1	A	413	ASN
1	A	450	SER
1	A	459	TYR
1	A	461	PHE
1	A	520	LYS
1	A	548	ARG
2	B	317	SER
2	B	321	ASP
2	B	334	THR
2	B	351	ASP
2	B	414	GLN
2	B	471	GLU
2	B	522[A]	MET
2	B	522[B]	MET
2	B	532	ASN
2	B	541	LEU
2	B	549	LEU
3	C	687	HIS
3	C	695	GLN
3	D	692	ARG
3	D	693	LEU
3	D	694	LEU
3	D	696	ASP

Some sidechains can be flipped to improve hydrogen bonding and reduce clashes. All (12) such sidechains are listed below:

Mol	Chain	Res	Type
1	A	356	HIS
1	A	413	ASN
1	A	455	ASN
1	A	474	HIS
1	A	498	GLN
1	A	519	ASN
2	B	398	HIS
2	B	414	GLN
2	B	513	HIS
2	B	532	ASN
3	C	687	HIS
3	C	695	GLN

5.3.3 RNA ⓘ

There are no RNA chains in this entry.

5.4 Non-standard residues in protein, DNA, RNA chains ⓘ

2 non-standard protein/DNA/RNA residues are modelled in this entry.

In the following table, the Counts columns list the number of bonds (or angles) for which Mogul statistics could be retrieved, the number of bonds (or angles) that are observed in the model and the number of bonds (or angles) that are defined in the chemical component dictionary. The Link column lists molecule types, if any, to which the group is linked. The Z score for a bond length (or angle) is the number of standard deviations the observed value is removed from the expected value. A bond length (or angle) with $|Z| > 2$ is considered an outlier worth inspection. RMSZ is the root-mean-square of all Z scores of the bond lengths (or angles).

Mol	Type	Chain	Res	Link	Bond lengths			Bond angles		
					Counts	RMSZ	$\# Z > 2$	Counts	RMSZ	$\# Z > 2$
1	CME	A	530	1	9,9,10	5.65	2 (22%)	7,9,11	1.33	1 (14%)
2	CME	B	381	2	9,9,10	5.52	1 (11%)	7,9,11	1.59	1 (14%)

In the following table, the Chirals column lists the number of chiral outliers, the number of chiral centers analysed, the number of these observed in the model and the number defined in the chemical component dictionary. Similar counts are reported in the Torsion and Rings columns. '-' means no outliers of that kind were identified.

Mol	Type	Chain	Res	Link	Chirals	Torsions	Rings
1	CME	A	530	1	-	0/6/8/10	0/0/0/0
2	CME	B	381	2	-	0/6/8/10	0/0/0/0

All (3) bond length outliers are listed below:

Mol	Chain	Res	Type	Atoms	Z	Observed(Å)	Ideal(Å)
1	A	530	CME	O-C	16.66	1.22	1.11
2	B	381	CME	O-C	16.40	1.22	1.11
1	A	530	CME	CA-C	2.59	1.53	1.48

All (2) bond angle outliers are listed below:

Mol	Chain	Res	Type	Atoms	Z	Observed(°)	Ideal(°)
2	B	381	CME	CA-CB-SG	-2.26	106.28	113.36
1	A	530	CME	CB-SG-SD	2.08	108.03	103.87

There are no chirality outliers.

There are no torsion outliers.

There are no ring outliers.

5.5 Carbohydrates

There are no carbohydrates in this entry.

5.6 Ligand geometry

2 ligands are modelled in this entry.

In the following table, the Counts columns list the number of bonds (or angles) for which Mogul statistics could be retrieved, the number of bonds (or angles) that are observed in the model and the number of bonds (or angles) that are defined in the chemical component dictionary. The Link column lists molecule types, if any, to which the group is linked. The Z score for a bond length (or angle) is the number of standard deviations the observed value is removed from the expected value. A bond length (or angle) with $|Z| > 2$ is considered an outlier worth inspection. RMSZ is the root-mean-square of all Z scores of the bond lengths (or angles).

Mol	Type	Chain	Res	Link	Bond lengths			Bond angles		
					Counts	RMSZ	$\# Z > 2$	Counts	RMSZ	$\# Z > 2$
4	GEN	A	600	-	22,22,22	1.97	3 (13%)	30,32,32	1.27	3 (10%)
4	GEN	B	600	-	22,22,22	1.95	4 (18%)	30,32,32	1.35	6 (20%)

In the following table, the Chirals column lists the number of chiral outliers, the number of chiral centers analysed, the number of these observed in the model and the number defined in the chemical component dictionary. Similar counts are reported in the Torsion and Rings columns. '-' means no outliers of that kind were identified.

Mol	Type	Chain	Res	Link	Chirals	Torsions	Rings
4	GEN	A	600	-	-	1/4/4/4	0/1/3/3
4	GEN	B	600	-	-	1/4/4/4	0/1/3/3

All (7) bond length outliers are listed below:

Mol	Chain	Res	Type	Atoms	Z	Observed(Å)	Ideal(Å)
4	A	600	GEN	C6-C5	6.96	1.51	1.40
4	B	600	GEN	C6-C5	6.17	1.50	1.40
4	B	600	GEN	O9-C8	4.73	1.43	1.34
4	A	600	GEN	O9-C8	4.03	1.42	1.34
4	B	600	GEN	C6-C7	3.14	1.49	1.39
4	A	600	GEN	C6-C7	3.09	1.49	1.39
4	B	600	GEN	O6-C6	2.22	1.26	1.23

All (9) bond angle outliers are listed below:

Mol	Chain	Res	Type	Atoms	Z	Observed(°)	Ideal(°)
4	A	600	GEN	C6-C7-C11	4.47	125.81	121.00
4	B	600	GEN	C6-C7-C11	3.18	124.42	121.00
4	B	600	GEN	C7-C6-C5	-2.65	116.98	121.04
4	A	600	GEN	O9-C10-C1	2.64	119.30	115.90
4	B	600	GEN	O9-C10-C1	2.56	119.20	115.90
4	B	600	GEN	C1-C10-C5	-2.38	120.19	123.10
4	A	600	GEN	C1-C10-C5	-2.36	120.21	123.10
4	B	600	GEN	C16-C11-C7	-2.25	117.06	120.85
4	B	600	GEN	C4-C5-C10	2.05	120.30	117.77

There are no chirality outliers.

All (2) torsion outliers are listed below:

Mol	Chain	Res	Type	Atoms
4	B	600	GEN	C12-C11-C7-C6
4	A	600	GEN	C16-C11-C7-C6

There are no ring outliers.

5.7 Other polymers ⓘ

There are no such residues in this entry.

5.8 Polymer linkage issues

There are no chain breaks in this entry.

6 Fit of model and data ⓘ

6.1 Protein, DNA and RNA chains ⓘ

In the following table, the column labelled ‘#RSRZ> 2’ contains the number (and percentage) of RSRZ outliers, followed by percent RSRZ outliers for the chain as percentile scores relative to all X-ray entries and entries of similar resolution. The OWAB column contains the minimum, median, 95th percentile and maximum values of the occupancy-weighted average B-factor per residue. The column labelled ‘Q< 0.9’ lists the number of (and percentage) of residues with an average occupancy less than 0.9.

Mol	Chain	Analysed	<RSRZ>	#RSRZ>2	OWAB(Å ²)	Q<0.9
1	A	230/258 (89%)	-0.02	6 (2%) 53 50	37, 44, 71, 96	1 (0%)
2	B	235/258 (91%)	0.32	19 (8%) 12 11	35, 45, 77, 97	0
3	C	10/13 (76%)	1.01	1 (10%) 8 8	40, 48, 59, 68	0
3	D	9/13 (69%)	1.11	1 (11%) 6 6	29, 37, 49, 50	0
All	All	484/542 (89%)	0.19	27 (5%) 24 21	29, 45, 74, 97	1 (0%)

All (27) RSRZ outliers are listed below:

Mol	Chain	Res	Type	RSRZ
2	B	549	LEU	8.4
2	B	471	GLU	6.3
1	A	471	GLU	5.7
2	B	470	GLU	5.2
2	B	459	TYR	5.0
1	A	306	LEU	4.4
3	C	687	HIS	4.2
1	A	470	GLU	3.9
2	B	533	VAL	3.9
3	D	696	ASP	3.7
2	B	458	VAL	3.6
2	B	535	PRO	3.4
2	B	472	LYS	3.4
1	A	337	PHE	3.3
2	B	541	LEU	3.0
1	A	459	TYR	2.9
2	B	336	PRO	2.9
2	B	335	ARG	2.8
2	B	531	LYS	2.7
2	B	526	TYR	2.7
2	B	420	GLY	2.5

Continued on next page...

Continued from previous page...

Mol	Chain	Res	Type	RSRZ
1	A	305	SER	2.3
2	B	493	ALA	2.3
2	B	530	CYS	2.2
2	B	373	HIS	2.2
2	B	334	THR	2.0
2	B	417	CYS	2.0

6.2 Non-standard residues in protein, DNA, RNA chains ⓘ

In the following table, the Atoms column lists the number of modelled atoms in the group and the number defined in the chemical component dictionary. LLDF column lists the quality of electron density of the group with respect to its neighbouring residues in protein, DNA or RNA chains. The B-factors column lists the minimum, median, 95th percentile and maximum values of B factors of atoms in the group. The column labelled 'Q < 0.9' lists the number of atoms with occupancy less than 0.9.

Mol	Type	Chain	Res	Atoms	RSR	LLDF	B-factors(Å ²)	Q<0.9
2	CME	B	381	10/11	0.12	-0.02	39,44,74,76	1
1	CME	A	530	10/11	0.10	-0.47	33,46,76,78	2

6.3 Carbohydrates ⓘ

There are no carbohydrates in this entry.

6.4 Ligands ⓘ

In the following table, the Atoms column lists the number of modelled atoms in the group and the number defined in the chemical component dictionary. LLDF column lists the quality of electron density of the group with respect to its neighbouring residues in protein, DNA or RNA chains. The B-factors column lists the minimum, median, 95th percentile and maximum values of B factors of atoms in the group. The column labelled 'Q < 0.9' lists the number of atoms with occupancy less than 0.9.

Mol	Type	Chain	Res	Atoms	RSR	LLDF	B-factors(Å ²)	Q<0.9
4	GEN	B	600	20/20	0.17	1.77	11,30,39,46	0
4	GEN	A	600	20/20	0.12	0.73	16,23,35,37	0

6.5 Other polymers ⓘ

There are no such residues in this entry.