



# Full wwPDB X-ray Structure Validation Report

Oct 15, 2014 – 03:42 PM EDT

PDB ID : 4QA8  
Title : Crystal structure of LprF from Mycobacterium bovis  
Authors : Ha, N.C.; Jiao, L.; Kim, J.S.  
Deposited on : 2014-05-02  
Resolution : 1.10 Å(reported)

This is a full wwPDB validation report for a publicly released PDB entry.  
We welcome your comments at [validation@mail.wwpdb.org](mailto:validation@mail.wwpdb.org)  
A user guide is available at <http://wwpdb.org/ValidationPDFNotes.html>

---

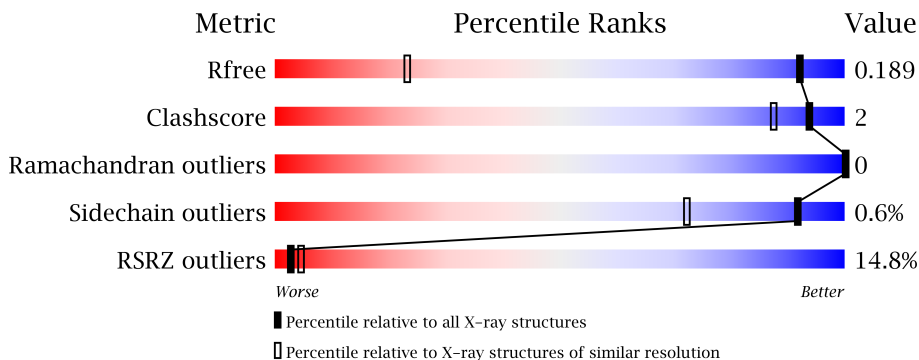
The following versions of software and data (see [references](#)) were used in the production of this report:

MolProbity : 4.02b-467  
Mogul : 1.16 November 2013  
Xtriage (Phenix) : dev-1439  
EDS : trunk24003  
Percentile statistics : 23426  
Refmac : 5.8.0049  
CCP4 : 6.3.0 (Settle)  
Ideal geometry (proteins) : Engh & Huber (2001)  
Ideal geometry (DNA, RNA) : Parkinson et. al. (1996)  
Validation Pipeline (wwPDB-VP) : trunk24003

# 1 Overall quality at a glance


The reported resolution of this entry is 1.10 Å.

Percentile scores (ranging between 0-100) for global validation metrics of the entry are shown in the following graphic. The table shows the number of entries on which the scores are based.



Metric	Whole archive (#Entries)	Similar resolution (#Entries, resolution range(Å))
$R_{free}$	77520	1041 (1.18-1.02)
Clashscore	88313	1006 (1.16-1.04)
Ramachandran outliers	86584	1058 (1.18-1.02)
C $\alpha$ geometry	86677	1053 (1.18-1.02)
Sidechain outliers	86556	1056 (1.18-1.02)
RSRZ outliers	77580	1040 (1.18-1.02)

The table below summarises the geometric issues observed across the polymeric chains and their fit to the electron density. The red, orange, yellow and green segments on the lower bar indicate the fraction of residues that contain outliers for  $\geq 3$ , 2, 1 and 0 types of geometric quality criteria. The upper red bar (where present) indicates the fraction of residues that have poor fit to the electron density.

Mol	Chain	Length	Quality of chain
1	A	229	

The following table lists non-polymeric compounds that are outliers for geometric or electron-density-fit criteria:

Mol	Type	Chain	Res	Geometry	Electron density
2	PJZ	A	301	-	X

## 2 Entry composition i

There are 3 unique types of molecules in this entry. The entry contains 1803 atoms, of which 0 are hydrogen and 0 are deuterium.

In the tables below, the ZeroOcc column contains the number of atoms modelled with zero occupancy, the AltConf column contains the number of residues with at least one atom in alternate conformation and the Trace column contains the number of residues modelled with at most 2 atoms.

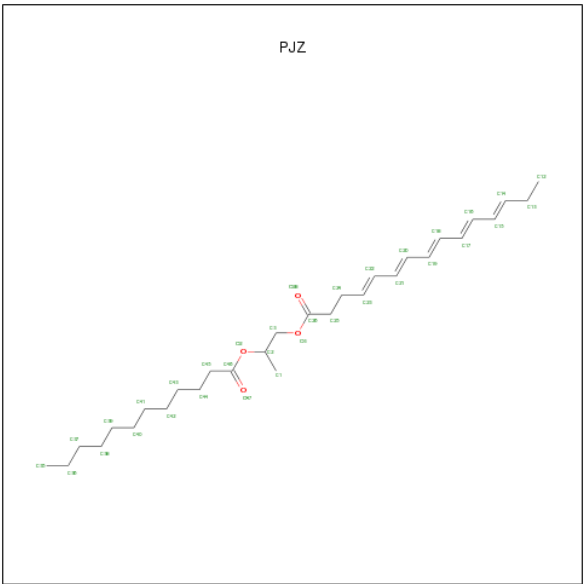
- Molecule 1 is a protein called Putative lipoprotein LprF.

Mol	Chain	Residues	Atoms					ZeroOcc	AltConf	Trace
			Total	C	N	O	S			
1	A	210	1613	1009	282	318	4	0	10	0

There are 7 discrepancies between the modelled and reference sequences:

Chain	Residue	Modelled	Actual	Comment	Reference
A	33	GLY	-	EXPRESSION TAG	UNP P65315
A	34	ALA	-	EXPRESSION TAG	UNP P65315
A	35	MET	-	EXPRESSION TAG	UNP P65315
A	36	ASP	-	EXPRESSION TAG	UNP P65315
A	37	PRO	-	EXPRESSION TAG	UNP P65315
A	38	GLU	-	EXPRESSION TAG	UNP P65315
A	39	PHE	-	EXPRESSION TAG	UNP P65315

- Molecule 2 is (2R)-2-(DODECANOYLOXY)PROPYL(4E,6E,8E,10E,12E)-PENTADEC-4,6,8,10,12-PENTAENOATE (three-letter code: PJZ) (formula: C<sub>30</sub>H<sub>48</sub>O<sub>4</sub>).



Mol	Chain	Residues	Atoms			ZeroOcc	AltConf
2	A	1	Total	C	O	0	0
			34	30	4		

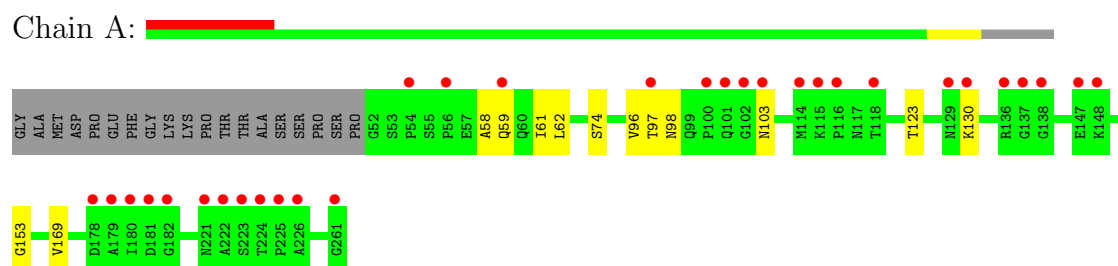
- Molecule 3 is water.

Mol	Chain	Residues	Atoms		ZeroOcc	AltConf
3	A	156	Total	O	0	0
			156	156		

### 3 Residue-property plots i

These plots are drawn for all protein, RNA and DNA chains in the entry. The first graphic for a chain summarises the proportions of errors displayed in the second graphic. The second graphic shows the sequence view annotated by issues in geometry and electron density. Residues are color-coded according to the number of geometric quality criteria for which they contain at least one outlier: green = 0, yellow = 1, orange = 2 and red = 3 or more. A red dot above a residue indicates a poor fit to the electron density ( $RSRZ > 2$ ). Stretches of 2 or more consecutive residues without any outlier are shown as a green connector. Residues present in the sample, but not in the model, are shown in grey.

- Molecule 1: Putative lipoprotein LprF



## 4 Data and refinement statistics

Property	Value	Source
Space group	P 1	Depositor
Cell constants a, b, c, $\alpha$ , $\beta$ , $\gamma$	31.51Å 32.38Å 51.72Å 76.40° 80.79° 71.23°	Depositor
Resolution (Å)	18.56 – 1.10 18.56 – 1.10	Depositor EDS
% Data completeness (in resolution range)	90.4 (18.56-1.10) 90.2 (18.56-1.10)	Depositor EDS
$R_{merge}$	(Not available)	Depositor
$R_{sym}$	(Not available)	Depositor
$\langle I/\sigma(I) \rangle$ <sup>1</sup>	3.65 (at 1.10Å)	Xtriage
Refinement program	PHENIX (phenix.refine: 1.8.4_1496)	Depositor
R, $R_{free}$	0.164 , 0.189 0.164 , 0.189	Depositor DCC
$R_{free}$ test set	3450 reflections (5.02%)	DCC
Wilson B-factor (Å <sup>2</sup> )	11.2	Xtriage
Anisotropy	0.376	Xtriage
Bulk solvent $k_{sol}$ (e/Å <sup>3</sup> ), $B_{sol}$ (Å <sup>2</sup> )	0.45 , 48.1	EDS
Estimated twinning fraction	No twinning to report.	Xtriage
L-test for twinning <sup>2</sup>	$\langle  L  \rangle = 0.49$ , $\langle L^2 \rangle = 0.32$	Xtriage
Outliers	0 of 68866 reflections	Xtriage
$F_o, F_c$ correlation	0.97	EDS
Total number of atoms	1803	wwPDB-VP
Average B, all atoms (Å <sup>2</sup> )	23.0	wwPDB-VP

Xtriage's analysis on translational NCS is as follows: *The largest off-origin peak in the Patterson function is 11.07% of the height of the origin peak. No significant pseudotranslation is detected.*

<sup>1</sup>Intensities estimated from amplitudes.

<sup>2</sup>Theoretical values of  $\langle |L| \rangle$ ,  $\langle L^2 \rangle$  for acentric reflections are 0.5, 0.375 respectively for untwinned datasets, and 0.333, 0.2 for perfectly twinned datasets.

## 5 Model quality

### 5.1 Standard geometry

Bond lengths and bond angles in the following residue types are not validated in this section: PJZ

The Z score for a bond length (or angle) is the number of standard deviations the observed value is removed from the expected value. A bond length (or angle) with  $|Z| > 5$  is considered an outlier worth inspection. RMSZ is the root-mean-square of all Z scores of the bond lengths (or angles).

Mol	Chain	Bond lengths		Bond angles	
		RMSZ	$\# Z  > 5$	RMSZ	$\# Z  > 5$
1	A	0.32	0/1640	0.55	1/2242 (0.0%)

There are no bond length outliers.

All (1) bond angle outliers are listed below:

Mol	Chain	Res	Type	Atoms	Z	Observed( $^{\circ}$ )	Ideal( $^{\circ}$ )
1	A	59	GLN	CA-CB-CG	5.13	124.69	113.40

There are no chirality outliers.

There are no planarity outliers.

### 5.2 Close contacts

In the following table, the Non-H and H(model) columns list the number of non-hydrogen atoms and hydrogen atoms in the chain respectively. The H(added) column lists the number of hydrogens added by MolProbity. The Clashes column lists the number of clashes within the asymmetric unit, and the number in parentheses is this value normalized per 1000 atoms of the molecule in the chain. The Symm-Clashes column gives symmetry related clashes, in the same way as for the Clashes column.

Mol	Chain	Non-H	H(model)	H(added)	Clashes	Symm-Clashes
1	A	1613	0	1637	7	0
2	A	34	0	0	2	0
3	A	156	0	0	0	0
All	All	1803	0	1637	7	0

Clashscore is defined as the number of clashes calculated for the entry per 1000 atoms (including hydrogens) of the entry. The overall clashscore for this entry is 2.

All (7) close contacts within the same asymmetric unit are listed below.

Atom-1	Atom-2	Distance(Å)	Clash(Å)
1:A:96:VAL:HG22	2:A:301:PJZ:C12	2.35	0.56
1:A:74:SER:HB3	1:A:97:THR:HG22	2.00	0.44
1:A:98:ASN:OD1	1:A:153:GLY:HA2	2.19	0.42
1:A:58:ALA:O	1:A:61[A]:ILE:HG22	2.19	0.42
1:A:123:THR:HG21	2:A:301:PJZ:C21	2.49	0.41
1:A:130:LYS:HE3	1:A:130:LYS:HB3	1.47	0.41
1:A:62:LEU:HD13	1:A:169:VAL:HB	2.03	0.40

There are no symmetry-related clashes.

## 5.3 Torsion angles

### 5.3.1 Protein backbone ⓘ

In the following table, the Percentiles column shows the percent Ramachandran outliers of the chain as a percentile score with respect to all X-ray entries followed by that with respect to entries of similar resolution.

The Analysed column shows the number of residues for which the backbone conformation was analysed, and the total number of residues.

Mol	Chain	Analysed	Favoured	Allowed	Outliers	Percentiles	
1	A	218/229 (95%)	208 (95%)	10 (5%)	0	100	100

There are no Ramachandran outliers to report.

### 5.3.2 Protein sidechains ⓘ

In the following table, the Percentiles column shows the percent sidechain outliers of the chain as a percentile score with respect to all X-ray entries followed by that with respect to entries of similar resolution. The Analysed column shows the number of residues for which the sidechain conformation was analysed, and the total number of residues.

Mol	Chain	Analysed	Rotameric	Outliers	Percentiles	
1	A	180/185 (97%)	179 (99%)	1 (1%)	92	72

All (1) residues with a non-rotameric sidechain are listed below:

Mol	Chain	Res	Type
1	A	103	ASN

Some sidechains can be flipped to improve hydrogen bonding and reduce clashes. All (1) such sidechains are listed below:

Mol	Chain	Res	Type
1	A	73	HIS

### 5.3.3 RNA ⓘ

There are no RNA chains in this entry.

## 5.4 Non-standard residues in protein, DNA, RNA chains ⓘ

There are no non-standard protein/DNA/RNA residues in this entry.

## 5.5 Carbohydrates ⓘ

There are no carbohydrates in this entry.

## 5.6 Ligand geometry ⓘ

1 ligand is modelled in this entry.

In the following table, the Counts columns list the number of bonds (or angles) for which Mogul statistics could be retrieved, the number of bonds (or angles) that are observed in the model and the number of bonds (or angles) that are defined in the chemical component dictionary. The Link column lists molecule types, if any, to which the group is linked. The Z score for a bond length (or angle) is the number of standard deviations the observed value is removed from the expected value. A bond length (or angle) with  $|Z| > 2$  is considered an outlier worth inspection. RMSZ is the root-mean-square of all Z scores of the bond lengths (or angles).

Mol	Type	Chain	Res	Link	Bond lengths			Bond angles		
					Counts	RMSZ	$\# Z  > 2$	Counts	RMSZ	$\# Z  > 2$
2	PJZ	A	301	-	33,33,33	2.76	9 (27%)	35,35,35	2.39	16 (45%)

In the following table, the Chirals column lists the number of chiral outliers, the number of chiral centers analysed, the number of these observed in the model and the number defined in the chemical component dictionary. Similar counts are reported in the Torsion and Rings columns. '-' means no outliers of that kind were identified.

Mol	Type	Chain	Res	Link	Chirals	Torsions	Rings
2	PJZ	A	301	-	1/1/3/13	0/34/34/34	0/0/0/0

All (9) bond length outliers are listed below:

Mol	Chain	Res	Type	Atoms	Z	Observed(Å)	Ideal(Å)
2	A	301	PJZ	C22-C23	5.78	1.49	1.32
2	A	301	PJZ	C15-C14	5.47	1.48	1.32
2	A	301	PJZ	C20-C21	5.31	1.49	1.35
2	A	301	PJZ	C18-C19	5.27	1.49	1.35
2	A	301	PJZ	C16-C17	5.24	1.49	1.35
2	A	301	PJZ	O47-C46	5.13	1.37	1.22
2	A	301	PJZ	O28-C26	5.11	1.37	1.22
2	A	301	PJZ	O2-C2	-4.69	1.38	1.47
2	A	301	PJZ	O3-C3	-3.13	1.38	1.45

All (16) bond angle outliers are listed below:

Mol	Chain	Res	Type	Atoms	Z	Observed(°)	Ideal(°)
2	A	301	PJZ	O2-C2-C3	6.99	121.39	105.88
2	A	301	PJZ	O2-C2-C1	4.78	119.40	107.87
2	A	301	PJZ	O3-C3-C2	3.99	119.15	108.71
2	A	301	PJZ	C15-C16-C17	-2.99	118.27	124.94
2	A	301	PJZ	O2-C46-C45	2.97	117.88	111.54
2	A	301	PJZ	C2-O2-C46	2.92	121.68	117.96
2	A	301	PJZ	C20-C19-C18	-2.66	119.00	124.94
2	A	301	PJZ	C17-C18-C19	-2.58	119.16	124.94
2	A	301	PJZ	C19-C20-C21	-2.56	119.21	124.94
2	A	301	PJZ	C13-C14-C15	-2.49	118.71	125.60
2	A	301	PJZ	C18-C17-C16	-2.45	119.46	124.94
2	A	301	PJZ	C25-C24-C23	2.43	118.94	112.66
2	A	301	PJZ	C22-C21-C20	-2.18	120.06	124.94
2	A	301	PJZ	O3-C26-C25	2.05	118.18	111.90
2	A	301	PJZ	C24-C25-C26	2.01	119.69	113.00
2	A	301	PJZ	O2-C46-O47	-2.01	118.30	123.66

All (1) chirality outliers are listed below:

Mol	Chain	Res	Type	Atom
2	A	301	PJZ	C2

There are no torsion outliers.

There are no ring outliers.

## 5.7 Other polymers ⓘ

There are no such residues in this entry.

## 5.8 Polymer linkage issues

There are no chain breaks in this entry.

## 6 Fit of model and data ⓘ

### 6.1 Protein, DNA and RNA chains ⓘ

In the following table, the column labelled ‘#RSRZ> 2’ contains the number (and percentage) of RSRZ outliers, followed by percent RSRZ outliers for the chain as percentile scores relative to all X-ray entries and entries of similar resolution. The OWAB column contains the minimum, median, 95<sup>th</sup> percentile and maximum values of the occupancy-weighted average B-factor per residue. The column labelled ‘Q< 0.9’ lists the number of (and percentage) of residues with an average occupancy less than 0.9.

Mol	Chain	Analysed	<RSRZ>	#RSRZ>2	OWAB(Å <sup>2</sup> )	Q<0.9
1	A	210/229 (91%)	0.71	31 (14%) 3 4	9, 16, 57, 111	0

All (31) RSRZ outliers are listed below:

Mol	Chain	Res	Type	RSRZ
1	A	224	THR	9.2
1	A	102	GLY	8.7
1	A	225	PRO	8.3
1	A	100	PRO	6.8
1	A	137	GLY	6.2
1	A	56	PRO	4.9
1	A	115	LYS	4.9
1	A	103	ASN	4.4
1	A	101	GLN	4.4
1	A	59	GLN	4.1
1	A	221	ASN	3.9
1	A	222	ALA	3.7
1	A	226	ALA	3.7
1	A	129	ASN	3.7
1	A	181	ASP	3.6
1	A	223	SER	3.0
1	A	147	GLU	2.8
1	A	116	PRO	2.8
1	A	180	ILE	2.8
1	A	261	GLY	2.8
1	A	148	LYS	2.7
1	A	138	GLY	2.6
1	A	182	GLY	2.6
1	A	178	ASP	2.4
1	A	179	ALA	2.3
1	A	97	THR	2.3
1	A	118	THR	2.2

*Continued on next page...*

*Continued from previous page...*

Mol	Chain	Res	Type	RSRZ
1	A	114	MET	2.1
1	A	54	PRO	2.1
1	A	130	LYS	2.1
1	A	136	ARG	2.1

## 6.2 Non-standard residues in protein, DNA, RNA chains ⓘ

There are no non-standard protein/DNA/RNA residues in this entry.

## 6.3 Carbohydrates ⓘ

There are no carbohydrates in this entry.

## 6.4 Ligands ⓘ

In the following table, the Atoms column lists the number of modelled atoms in the group and the number defined in the chemical component dictionary. LLDF column lists the quality of electron density of the group with respect to its neighbouring residues in protein, DNA or RNA chains. The B-factors column lists the minimum, median, 95<sup>th</sup> percentile and maximum values of B factors of atoms in the group. The column labelled 'Q< 0.9' lists the number of atoms with occupancy less than 0.9.

Mol	Type	Chain	Res	Atoms	RSR	LLDF	B-factors(Å <sup>2</sup> )	Q<0.9
2	PJZ	A	301	34/34	0.18	5.07	19,35,116,132	0

## 6.5 Other polymers ⓘ

There are no such residues in this entry.