



Full wwPDB X-ray Structure Validation Report

Feb 27, 2014 – 04:09 PM GMT

PDB ID : 2QLQ
Title : Crystal structure of SRC kinase domain with covalent inhibitor RL3
Authors : Michalczyk, A.; Rode, H.B.; Gruetter, C.; Rauh, D.
Deposited on : 2007-07-13
Resolution : 2.33 Å(reported)

This is a full wwPDB validation report for a publicly released PDB entry.
We welcome your comments at validation@mail.wwpdb.org
A user guide is available at <http://wwpdb.org/ValidationPDFNotes.html>

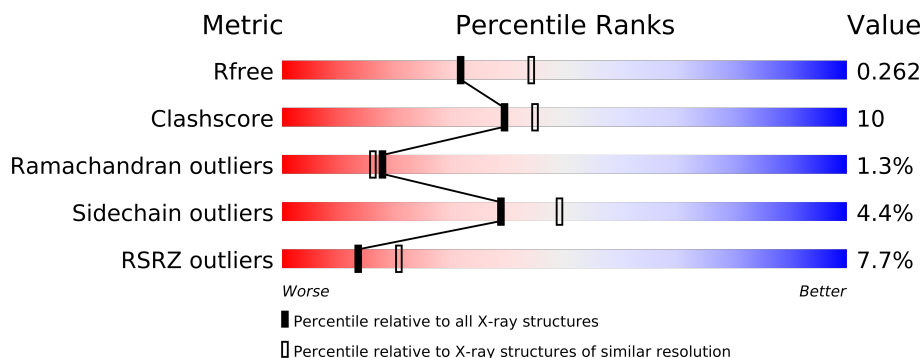
The following versions of software and data (see [references](#)) were used in the production of this report:

MolProbity : 4.02b-467
Mogul : 1.15 2013
Xtriage (Phenix) : dev-1323
EDS : stable22639
Percentile statistics : 21963
Refmac : 5.8.0049
CCP4 : 6.3.0 (Settle)
Ideal geometry (proteins) : Engh & Huber (2001)
Ideal geometry (DNA, RNA) : Parkinson et. al. (1996)
Validation Pipeline (wwPDB-VP) : stable22683

1 Overall quality at a glance

The reported resolution of this entry is 2.33 Å.

Percentile scores (ranging between 0-100) for global validation metrics of the entry are shown in the following graphic. The table shows the number of entries on which the scores are based.



Metric	Whole archive (#Entries)	Similar resolution (#Entries, resolution range(Å))
R_{free}	66092	4049 (2.38-2.30)
Clashscore	79885	1094 (2.36-2.32)
Ramachandran outliers	78287	1080 (2.36-2.32)
Sidechain outliers	78261	1081 (2.36-2.32)
RSRZ outliers	66119	4050 (2.38-2.30)

The table below summarises the geometric issues observed across the polymeric chains and their fit to the electron density. The red, orange, yellow and green segments on the lower bar indicate the fraction of residues that contain outliers for ≥ 3 , 2, 1 and 0 types of geometric quality criteria. The upper red bar (where present) indicates the fraction of residues that have poor fit to the electron density.

Mol	Chain	Length	Quality of chain
1	A	286	
1	B	286	

The following table lists non-polymeric compounds that are outliers for geometric or electron-density-fit criteria:

Mol	Type	Chain	Res	Geometry	Electron density
2	SR2	A	1483	-	X
2	SR2	B	1345	-	X

2 Entry composition

There are 3 unique types of molecules in this entry. The entry contains 4084 atoms, of which 0 are hydrogen and 0 are deuterium.

In the tables below, the ZeroOcc column contains the number of atoms modelled with zero occupancy, the AltConf column contains the number of residues with at least one atom in alternate conformation and the Trace column contains the number of residues modelled with at most 2 atoms.

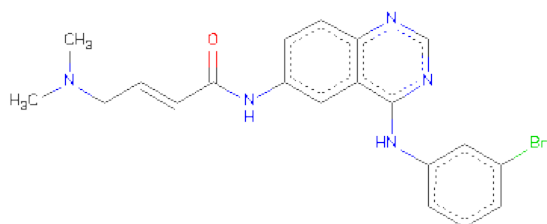
- Molecule 1 is a protein called Proto-oncogene tyrosine-protein kinase Src.

Mol	Chain	Residues	Atoms					ZeroOcc	AltConf	Trace
1	A	245	Total	C	N	O	S	0	0	0
			1923	1237	318	351	17			
1	B	248	Total	C	N	O	S	0	1	0
			1969	1264	325	363	17			

There are 8 discrepancies between the modelled and reference sequences:

Chain	Residue	Modelled	Actual	Comment	Reference
A	248	GLY	-	EXPRESSION TAG	UNP P00523
A	249	HIS	-	EXPRESSION TAG	UNP P00523
A	250	MET	-	EXPRESSION TAG	UNP P00523
A	345	CYS	SER	ENGINEERED	UNP P00523
B	248	GLY	-	EXPRESSION TAG	UNP P00523
B	249	HIS	-	EXPRESSION TAG	UNP P00523
B	250	MET	-	EXPRESSION TAG	UNP P00523
B	345	CYS	SER	ENGINEERED	UNP P00523

- Molecule 2 is (2E)-N-{4-[(3-BROMOPHENYL)AMINO]QUINAZOLIN-6-YL}-4-(DIMETHYLAMINO)BUT-2-ENAMIDE (three-letter code: SR2) (formula: C₂₀H₂₀BrN₅O).



Mol	Chain	Residues	Atoms					ZeroOcc	AltConf
2	A	1	Total	Br	C	N	O	0	1
			54	2	40	10	2		
2	A	1	Total	C	N	O		0	0
			12	9	2	1			
2	B	1	Total	Br	C	N	O	0	0
			27	1	20	5	1		

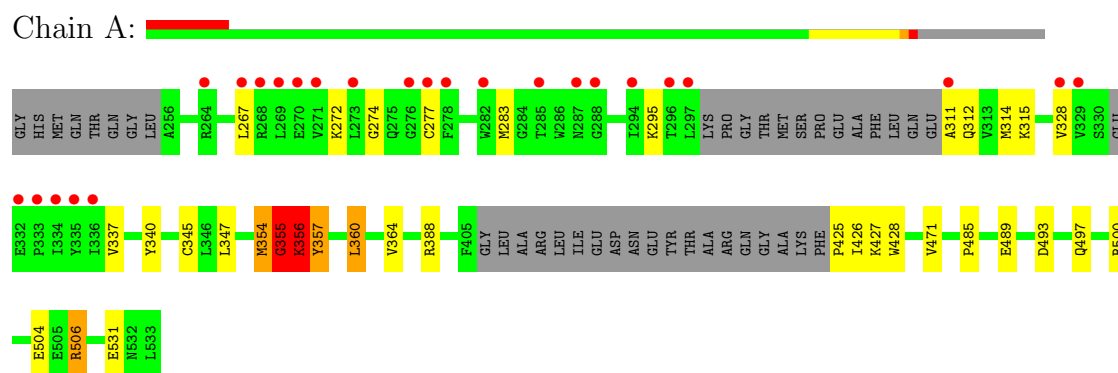
- Molecule 3 is water.

Mol	Chain	Residues	Atoms		ZeroOcc	AltConf
3	A	51	Total	O	0	0
			51	51		
3	B	48	Total	O	0	0
			48	48		

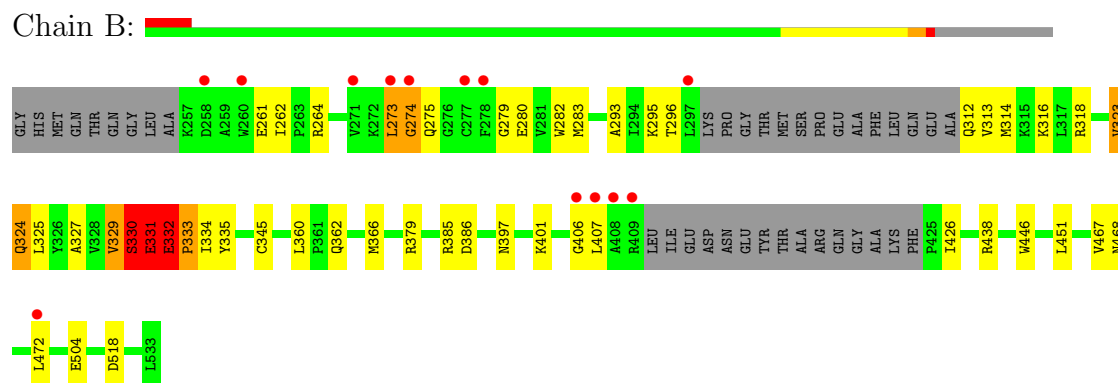
3 Residue-property plots

These plots are drawn for all protein, RNA and DNA chains in the entry. The first graphic for a chain summarises the proportions of errors displayed in the second graphic. The second graphic shows the sequence view annotated by issues in geometry and electron density. Residues are color-coded according to the number of geometric quality criteria for which they contain at least one outlier: green = 0, yellow = 1, orange = 2 and red = 3 or more. A red dot above a residue indicates a poor fit to the electron density ($RSRZ > 2$). Stretches of 2 or more consecutive residues without any outlier are shown as a green connector. Residues present in the sample, but not in the model, are shown in grey.

- Molecule 1: Proto-oncogene tyrosine-protein kinase Src



- Molecule 1: Proto-oncogene tyrosine-protein kinase Src



4 Data and refinement statistics

Property	Value	Source
Space group	P 1	Depositor
Cell constants a, b, c, α , β , γ	41.94Å 63.53Å 74.50Å 78.28° 90.37° 89.45°	Depositor
Resolution (Å)	72.93 – 2.33 52.94 – 2.33	Depositor EDS
% Data completeness (in resolution range)	90.7 (72.93-2.33) 90.7 (52.94-2.33)	Depositor EDS
R_{merge}	0.06	Depositor
R_{sym}	0.06	Depositor
$\langle I/\sigma(I) \rangle$ ¹	2.96 (at 2.34Å)	Xtriage
Refinement program	REFMAC 5.2.0005	Depositor
R, R_{free}	0.212 , 0.267 0.212 , 0.262	Depositor DCC
R_{free} test set	1463 reflections (5.28%)	DCC
Wilson B-factor (Å ²)	33.1	Xtriage
Anisotropy	0.138	Xtriage
Bulk solvent k_{sol} (e/Å ³), B_{sol} (Å ²)	0.36 , 26.7	EDS
Estimated twinning fraction	0.035 for h,-k,-l	Xtriage
L-test for twinning	$\langle L \rangle = 0.49$, $\langle L^2 \rangle = 0.32$	Xtriage
Outliers	0 of 29166 reflections	Xtriage
F_o, F_c correlation	0.93	EDS
Total number of atoms	4084	wwPDB-VP
Average B, all atoms (Å ²)	32.0	wwPDB-VP

Xtriage's analysis on translational NCS is as follows: *The largest off-origin peak in the Patterson function is 7.40% of the height of the origin peak. No significant pseudotranslation is detected.*

¹Intensities estimated from amplitudes.

5 Model quality

5.1 Standard geometry

Bond lengths and bond angles in the following residue types are not validated in this section: SR2

The Z score for a bond length (or angle) is the number of standard deviations the observed value is removed from the expected value. A bond length (or angle) with $|Z| > 5$ is considered an outlier worth inspection. RMSZ is the root-mean-square of all Z scores of the bond lengths (or angles).

Mol	Chain	Bond lengths		Bond angles	
		RMSZ	$\# Z > 5$	RMSZ	$\# Z > 5$
1	A	0.77	0/1968	0.82	1/2668 (0.0%)
1	B	0.78	1/2018 (0.0%)	0.80	2/2735 (0.1%)
All	All	0.77	1/3986 (0.0%)	0.81	3/5403 (0.1%)

Chiral center outliers are detected by calculating the chiral volume of a chiral center and verifying if the center is modelled as a planar moiety or with the opposite hand. A planarity outlier is detected by checking planarity of atoms in a peptide group, atoms in a mainchain group or atoms of a sidechain that are expected to be planar.

Mol	Chain	#Chirality outliers	#Planarity outliers
1	A	0	4
1	B	0	4
All	All	0	8

All (1) bond length outliers are listed below:

Mol	Chain	Res	Type	Atoms	Z	Observed(Å)	Ideal(Å)
1	B	273	LEU	C-O	7.16	1.36	1.23

All (3) bond angle outliers are listed below:

Mol	Chain	Res	Type	Atoms	Z	Observed(°)	Ideal(°)
1	B	273	LEU	CA-C-N	6.58	129.36	116.20
1	A	506	ARG	NE-CZ-NH1	5.84	123.22	120.30
1	B	518	ASP	CB-CG-OD1	5.07	122.86	118.30

There are no chirality outliers.

All (8) planarity outliers are listed below:

Mol	Chain	Res	Type	Group
1	A	354	MET	Peptide
1	A	355	GLY	Peptide
1	A	356	LYS	Peptide
1	A	425	PRO	Peptide
1	B	329	VAL	Peptide
1	B	330	SER	Peptide
1	B	331	GLU	Peptide
1	B	332	GLU	Peptide

5.2 Close contacts ⓘ

In the following table, the Non-H and H(model) columns list the number of non-hydrogen atoms and hydrogen atoms in the chain respectively. The H(added) column lists the number of hydrogens added by MolProbity. The Clashes column lists the number of clashes within the asymmetric unit, and the number in parentheses is this value normalized per 1000 atoms of the molecule in the chain. The Symm-Clashes column gives symmetry related clashes, in the same way as for the Clashes column.

Mol	Chain	Non-H	H(model)	H(added)	Clashes	Symm-Clashes
1	A	1923	0	1865	28	0
1	B	1969	0	1922	42	1
2	A	66	0	48	14	0
2	B	27	0	19	3	0
3	A	51	0	0	0	0
3	B	48	0	0	1	0
All	All	4084	0	3854	75	1

Clashscore is defined as the number of clashes calculated for the entry per 1000 atoms (including hydrogens) of the entry. The overall clashscore for this entry is 10.

All (75) close contacts within the same asymmetric unit are listed below.

Atom-1	Atom-2	Distance(Å)	Clash(Å)
1:B:261:GLU:OE1	1:B:330:SER:HB2	1.46	1.16
1:B:406:GLY:N	1:B:407:LEU:HA	1.60	1.12
1:A:355:GLY:HA2	1:A:357:TYR:H	1.08	1.09
1:A:355:GLY:HA2	1:A:357:TYR:N	1.77	0.98
2:A:1345[B]:SR2:H8	2:A:1345[B]:SR2:O61	1.66	0.93
1:B:406:GLY:H	1:B:407:LEU:HA	1.33	0.92
1:A:345:CYS:SG	2:A:1345[A]:SR2:H653	2.10	0.90
1:A:345:CYS:SG	2:A:1345[B]:SR2:H653	2.11	0.89
2:A:1345[A]:SR2:H8	2:A:1345[A]:SR2:O61	1.70	0.88
1:A:356:LYS:O	1:A:357:TYR:CD1	2.31	0.84

Continued on next page...

Continued from previous page...

Atom-1	Atom-2	Distance(Å)	Clash(Å)
1:A:355:GLY:CA	1:A:357:TYR:H	1.89	0.83
1:B:312:GLN:N	1:B:313:VAL:HA	1.93	0.83
1:A:356:LYS:O	1:A:357:TYR:CG	2.30	0.83
1:B:345:CYS:HB3	2:B:1345:SR2:O61	1.78	0.83
1:B:331:GLU:O	1:B:332:GLU:HB3	1.77	0.82
1:A:295:LYS:HB2	2:A:1345[B]:SR2:BRR1	2.34	0.81
1:B:331:GLU:O	1:B:332:GLU:CB	2.29	0.79
1:A:356:LYS:O	1:A:356:LYS:CG	2.30	0.78
1:B:273:LEU:H	1:B:274:GLY:HA2	1.49	0.77
1:A:356:LYS:HG3	1:A:356:LYS:O	1.86	0.73
2:A:1345[A]:SR2:C8	2:A:1345[A]:SR2:O61	2.30	0.73
1:B:426:ILE:HD13	1:B:472:LEU:HG	1.75	0.67
1:B:273:LEU:H	1:B:274:GLY:CA	2.07	0.67
1:B:406:GLY:N	1:B:407:LEU:CA	2.47	0.65
1:A:345:CYS:SG	2:A:1345[A]:SR2:C65	2.79	0.65
1:A:345:CYS:SG	2:A:1345[B]:SR2:C65	2.79	0.64
1:B:329:VAL:O	1:B:334:ILE:HG23	1.97	0.63
2:A:1345[B]:SR2:O61	2:A:1345[B]:SR2:C8	2.30	0.62
1:A:283:MET:HG3	1:A:340:TYR:CE1	2.35	0.62
1:B:385:ARG:HD2	1:B:407:LEU:O	2.00	0.61
1:B:332:GLU:HA	1:B:333:PRO:C	2.23	0.59
1:B:323:VAL:HG12	1:B:401:LYS:HB2	1.84	0.59
1:B:312:GLN:HG3	1:B:314:MET:H	1.68	0.59
1:B:262:ILE:HG12	1:B:327:ALA:HB1	1.85	0.59
1:A:295:LYS:CB	2:A:1345[B]:SR2:BRR1	3.06	0.56
1:A:355:GLY:CA	1:A:357:TYR:N	2.60	0.56
1:B:467:VAL:HG12	1:B:468:ASN:N	2.18	0.56
1:B:318:ARG:HG3	1:B:324:GLN:NE2	2.19	0.56
1:B:406:GLY:H	1:B:407:LEU:CA	2.15	0.56
1:B:261:GLU:OE1	1:B:330:SER:CB	2.38	0.56
1:B:312:GLN:N	1:B:313:VAL:CA	2.67	0.55
1:B:273:LEU:N	1:B:274:GLY:CA	2.69	0.55
1:A:489:GLU:HB2	2:A:1483:SR2:H652	1.90	0.54
1:A:493:ASP:O	1:A:497:GLN:HG3	2.09	0.53
1:A:388:ARG:HB3	1:A:428:TRP:CD1	2.44	0.52
1:B:329:VAL:HB	1:B:335:TYR:HB2	1.91	0.52
1:A:272:LYS:HG2	1:A:274:GLY:HA3	1.93	0.51
2:A:1483:SR2:H611	2:A:1483:SR2:HN11	1.76	0.50
1:A:485:PRO:HA	2:A:1483:SR2:C13	2.43	0.48
1:B:379:ARG:NH1	3:B:79:HOH:O	2.33	0.48
1:B:273:LEU:HD11	1:B:283:MET:N	2.30	0.47
1:A:311:ALA:HA	1:A:314:MET:HB2	1.96	0.47

Continued on next page...

Continued from previous page...

Atom-1	Atom-2	Distance(Å)	Clash(Å)
1:B:467:VAL:CG1	1:B:468:ASN:N	2.78	0.47
1:B:280:GLU:OE1	1:B:282:TRP:NE1	2.22	0.47
1:A:427:LYS:HD3	1:A:471:VAL:HG21	1.96	0.47
1:B:264:ARG:HH22	1:B:333:PRO:HD2	1.80	0.47
1:B:293:ALA:HB2	2:B:1345:SR2:H19	1.97	0.47
1:A:311:ALA:O	1:A:315:LYS:HG3	2.15	0.46
1:B:504:GLU:CD	1:B:504:GLU:H	2.19	0.46
1:B:273:LEU:CD1	1:B:282:TRP:C	2.85	0.45
1:B:386:ASP:HB2	1:B:406:GLY:O	2.16	0.45
1:B:362:GLN:O	1:B:366:MET:HG3	2.17	0.45
1:B:312:GLN:HG3	1:B:314:MET:N	2.32	0.45
1:B:312:GLN:CG	1:B:314:MET:H	2.30	0.45
1:A:500:ARG:O	1:A:506:ARG:HD2	2.16	0.45
1:A:295:LYS:HB2	2:A:1345[A]:SR2:C21	2.47	0.44
1:B:446:TRP:CD1	1:B:446:TRP:C	2.92	0.43
1:B:279:GLY:HA3	1:B:296:THR:O	2.19	0.42
1:A:360:LEU:HD22	1:A:364:VAL:HG23	2.02	0.42
1:B:313:VAL:CB	1:B:316:LYS:HD2	2.50	0.41
1:B:334:ILE:HG22	1:B:335:TYR:N	2.35	0.41
1:A:356:LYS:O	1:A:357:TYR:CD2	2.73	0.41
1:B:293:ALA:HB2	2:B:1345:SR2:C19	2.51	0.40
1:B:280:GLU:O	1:B:295:LYS:HA	2.21	0.40
1:A:267:LEU:HD21	1:A:337:VAL:HG21	2.03	0.40

All (1) symmetry-related close contacts are listed below. The label for Atom-2 includes the symmetry operator and encoded unit-cell translations to be applied.

Atom-1	Atom-2	Distance(Å)	Clash(Å)
1:B:397:ASN:OD1	1:B:438:ARG:NE[1_455]	2.13	0.07

5.3 Torsion angles

5.3.1 Protein backbone ⓘ

In the following table, the Percentiles column shows the percent Ramachandran outliers of the chain as a percentile score with respect to all X-ray entries followed by that with respect to entries of similar resolution. The Analysed column shows the number of residues for which the backbone conformation was analysed, and the total number of residues.

Mol	Chain	Analysed	Favoured	Allowed	Outliers	Percentiles
1	A	237/286 (83%)	226 (95%)	8 (3%)	3 (1%)	18 16

Continued on next page...

Continued from previous page...

Mol	Chain	Analysed	Favoured	Allowed	Outliers	Percentiles	
1	B	243/286 (85%)	228 (94%)	12 (5%)	3 (1%)	19	18
All	All	480/572 (84%)	454 (95%)	20 (4%)	6 (1%)	18	16

All (6) Ramachandran outliers are listed below:

Mol	Chain	Res	Type
1	A	356	LYS
1	B	332	GLU
1	B	333	PRO
1	B	274	GLY
1	A	355	GLY
1	A	357	TYR

5.3.2 Protein sidechains ⓘ

In the following table, the Percentiles column shows the percent sidechain outliers of the chain as a percentile score with respect to all X-ray entries followed by that with respect to entries of similar resolution. The Analysed column shows the number of residues for which the sidechain conformation was analysed, and the total number of residues.

Mol	Chain	Analysed	Rotameric	Outliers	Percentiles	
1	A	199/245 (81%)	189 (95%)	10 (5%)	34	42
1	B	207/245 (84%)	199 (96%)	8 (4%)	43	57
All	All	406/490 (83%)	388 (96%)	18 (4%)	39	49

All (18) residues with a non-rotameric sidechain are listed below:

Mol	Chain	Res	Type
1	A	277	CYS
1	A	312	GLN
1	A	328	VAL
1	A	347	LEU
1	A	354	MET
1	A	356	LYS
1	A	360	LEU
1	A	426	ILE
1	A	504	GLU
1	A	531	GLU
1	B	275	GLN
1	B	323	VAL

Continued on next page...

Continued from previous page...

Mol	Chain	Res	Type
1	B	324	GLN
1	B	325	LEU
1	B	330	SER
1	B	331	GLU
1	B	360	LEU
1	B	451	LEU

Some sidechains can be flipped to improve hydrogen bonding and reduce clashes. All (2) such sidechains are listed below:

Mol	Chain	Res	Type
1	A	391	ASN
1	B	275	GLN

5.3.3 RNA ⓘ

There are no RNA chains in this entry.

5.4 Non-standard residues in protein, DNA, RNA chains ⓘ

There are no non-standard protein/DNA/RNA residues in this entry.

5.5 Carbohydrates ⓘ

There are no carbohydrates in this entry.

5.6 Ligand geometry ⓘ

4 ligands are modelled in this entry.

In the following table, the Counts columns list the number of bonds (or angles) for which Mogul statistics could be retrieved, the number of bonds (or angles) that are observed in the model and the number of bonds (or angles) that are defined in the chemical component dictionary. The Link column lists molecule types, if any, to which the group is linked. The Z score for a bond length (or angle) is the number of standard deviations the observed value is removed from the expected value. A bond length (or angle) with $|Z| > 2$ is considered an outlier worth inspection. RMSZ is the root-mean-square of all Z scores of the bond lengths (or angles).

Mol	Type	Chain	Res	Link	Bond lengths			Bond angles		
					Counts	RMSZ	$\# Z > 2$	Counts	RMSZ	$\# Z > 2$
2	SR2	A	1345[A]	1	29,29,29	1.96	5 (17%)	39,39,39	3.86	24 (61%)

Mol	Type	Chain	Res	Link	Bond lengths			Bond angles		
					Counts	RMSZ	# Z > 2	Counts	RMSZ	# Z > 2
2	SR2	A	1345[B]	1	29,29,29	2.40	11 (37%)	39,39,39	3.33	18 (46%)
2	SR2	A	1483	1	9,11,29	3.11	3 (33%)	9,13,39	2.12	3 (33%)
2	SR2	B	1345	1	29,29,29	2.26	6 (20%)	39,39,39	2.83	12 (30%)

In the following table, the Chirals column lists the number of chiral outliers, the number of chiral centers analysed, the number of these observed in the model and the number defined in the chemical component dictionary. Similar counts are reported in the Torsion and Rings columns. '-' means no outliers of that kind were identified.

Mol	Type	Chain	Res	Link	Chirals	Torsions	Rings
2	SR2	A	1345[A]	1	-	0/14/14/14	0/1/3/3
2	SR2	A	1345[B]	1	-	0/14/14/14	0/1/3/3
2	SR2	A	1483	1	-	1/8/10/14	0/0/0/3
2	SR2	B	1345	1	-	1/14/14/14	0/1/3/3

All (25) bond length outliers are listed below:

Mol	Chain	Res	Type	Atoms	Z	Observed(Å)	Ideal(Å)
2	B	1345	SR2	C11-C51	9.48	1.59	1.31
2	A	1483	SR2	C11-C51	8.24	1.56	1.31
2	A	1345[A]	SR2	C11-C51	7.33	1.53	1.31
2	A	1345[B]	SR2	C11-C51	7.18	1.52	1.31
2	A	1345[B]	SR2	C9-N11	-4.28	1.33	1.41
2	A	1345[B]	SR2	C6-C7	-4.20	1.39	1.45
2	A	1345[A]	SR2	C9-N11	-4.07	1.33	1.41
2	A	1345[B]	SR2	C5-N1	-4.01	1.32	1.40
2	B	1345	SR2	C11-C10	3.58	1.55	1.48
2	A	1345[B]	SR2	BRR1-C3	-3.24	1.82	1.90
2	B	1345	SR2	C61-C51	2.95	1.57	1.50
2	A	1345[B]	SR2	C4-C5	-2.94	1.34	1.39
2	A	1345[B]	SR2	C7-C18	-2.89	1.38	1.42
2	A	1483	SR2	C11-C10	2.73	1.54	1.48
2	B	1345	SR2	C6-C7	-2.50	1.41	1.45
2	B	1345	SR2	C5-N1	-2.49	1.35	1.40
2	A	1345[A]	SR2	C18-N2	-2.42	1.33	1.37
2	A	1345[A]	SR2	C11-C10	2.36	1.53	1.48
2	A	1345[B]	SR2	C6-N1	-2.32	1.31	1.36
2	A	1345[B]	SR2	C17-C18	-2.31	1.37	1.41
2	A	1345[B]	SR2	C18-N2	-2.28	1.33	1.37
2	B	1345	SR2	C9-N11	-2.25	1.37	1.41
2	A	1345[B]	SR2	C11-C10	2.20	1.52	1.48
2	A	1483	SR2	C61-C51	2.19	1.55	1.50

Continued on next page...

Continued from previous page...

Mol	Chain	Res	Type	Atoms	Z	Observed(Å)	Ideal(Å)
2	A	1345[A]	SR2	C17-C18	-2.12	1.38	1.41

All (57) bond angle outliers are listed below:

Mol	Chain	Res	Type	Atoms	Z	Observed(°)	Ideal(°)
2	B	1345	SR2	C19-N3-C6	9.34	122.56	116.69
2	A	1345[A]	SR2	C9-N11-C10	-9.28	114.34	128.41
2	B	1345	SR2	N2-C19-N3	-9.08	121.11	128.71
2	A	1345[A]	SR2	C19-N3-C6	9.07	122.39	116.69
2	A	1345[B]	SR2	C9-N11-C10	-8.75	115.15	128.41
2	A	1345[B]	SR2	N2-C19-N3	-7.92	122.08	128.71
2	A	1345[A]	SR2	C7-C6-N1	7.76	126.33	119.62
2	A	1345[B]	SR2	C19-N2-C18	7.71	121.34	115.37
2	A	1345[A]	SR2	N2-C19-N3	-7.51	122.43	128.71
2	A	1345[B]	SR2	C61-C51-C11	-7.16	99.76	125.73
2	A	1345[A]	SR2	C61-C51-C11	-7.12	99.92	125.73
2	A	1345[A]	SR2	C19-N2-C18	6.67	120.53	115.37
2	A	1345[A]	SR2	C7-C6-N3	-6.26	117.03	121.31
2	B	1345	SR2	C19-N2-C18	6.21	120.17	115.37
2	A	1345[A]	SR2	C11-C10-N11	5.47	123.60	114.19
2	A	1345[B]	SR2	C11-C10-N11	5.25	123.22	114.19
2	A	1345[B]	SR2	C19-N3-C6	4.80	119.71	116.69
2	B	1345	SR2	C7-C6-N3	-4.58	118.17	121.31
2	A	1483	SR2	C61-C51-C11	-4.25	110.31	125.73
2	A	1345[B]	SR2	BRR1-C3-C4	-4.12	113.06	119.28
2	A	1345[B]	SR2	O61-C10-C11	-4.02	115.42	123.13
2	A	1345[A]	SR2	O61-C10-C11	-3.81	115.83	123.13
2	A	1345[A]	SR2	C5-C4-C3	3.64	122.89	118.83
2	A	1345[B]	SR2	C21-C20-C5	3.59	124.36	119.73
2	B	1345	SR2	C61-C51-C11	-3.51	113.01	125.73
2	A	1345[B]	SR2	C6-C7-C18	3.41	117.57	115.63
2	A	1345[B]	SR2	C7-C18-N2	-3.31	119.44	122.91
2	A	1345[A]	SR2	C6-C7-C18	3.25	117.48	115.63
2	A	1345[B]	SR2	C8-C7-C6	-3.14	123.30	124.98
2	A	1345[A]	SR2	C21-C20-C5	3.09	123.72	119.73
2	A	1345[A]	SR2	BRR1-C3-C4	3.04	123.87	119.28
2	B	1345	SR2	C8-C7-C6	-2.99	123.37	124.98
2	A	1345[A]	SR2	C22-C3-C4	-2.98	116.78	121.42
2	B	1345	SR2	C6-C7-C18	2.94	117.30	115.63
2	B	1345	SR2	C9-N11-C10	-2.89	124.02	128.41
2	A	1345[A]	SR2	C20-C5-C4	-2.79	116.39	119.66
2	A	1345[A]	SR2	C51-C11-C10	2.67	125.61	121.58

Continued on next page...

Continued from previous page...

Mol	Chain	Res	Type	Atoms	Z	Observed(°)	Ideal(°)
2	A	1345[B]	SR2	C5-N1-C6	-2.66	123.28	128.67
2	A	1345[A]	SR2	C7-C18-N2	-2.65	120.14	122.91
2	A	1345[B]	SR2	C22-C3-C4	2.63	125.53	121.42
2	A	1483	SR2	C65-N63-C61	2.57	117.61	110.75
2	B	1345	SR2	O61-C10-C11	-2.46	118.41	123.13
2	B	1345	SR2	C5-C4-C3	2.36	121.47	118.83
2	A	1345[B]	SR2	C65-N63-C61	2.31	116.92	110.75
2	A	1345[A]	SR2	C65-N63-C61	2.29	116.88	110.75
2	A	1345[A]	SR2	O61-C10-N11	-2.29	119.92	122.88
2	B	1345	SR2	C7-C6-N1	2.27	121.58	119.62
2	A	1483	SR2	O61-C10-C11	-2.26	118.80	123.13
2	A	1345[A]	SR2	N1-C6-N3	-2.24	116.63	118.92
2	A	1345[B]	SR2	C51-C11-C10	2.19	124.88	121.58
2	A	1345[A]	SR2	C8-C7-C6	2.17	126.15	124.98
2	B	1345	SR2	C7-C18-N2	-2.14	120.67	122.91
2	A	1345[B]	SR2	C7-C6-N3	-2.12	119.85	121.31
2	A	1345[A]	SR2	C17-C18-C7	2.07	121.53	119.08
2	A	1345[A]	SR2	C21-C22-C3	2.06	123.14	118.64
2	A	1345[A]	SR2	C22-C21-C20	-2.06	117.07	120.25
2	A	1345[B]	SR2	C20-C5-C4	-2.06	117.25	119.66

There are no chirality outliers.

All (2) torsion outliers are listed below:

Mol	Chain	Res	Type	Atoms
2	B	1345	SR2	C10-C11-C51-C61
2	A	1483	SR2	C10-C11-C51-C61

There are no ring outliers.

5.7 Other polymers ⓘ

There are no such residues in this entry.

5.8 Polymer linkage issues

There are no chain breaks in this entry.

6 Fit of model and data ⓘ

6.1 Protein, DNA and RNA chains ⓘ

In the following table, the column labelled ‘#RSRZ > 2’ contains the number (and percentage) of RSRZ outliers, followed by percent RSRZ outliers for the chain as percentile scores relative to all X-ray entries and entries of similar resolution. The OWAB column contains the minimum, median, 95th percentile and maximum values of the occupancy-weighted average B-factor per residue. The column labelled ‘Q < 0.9’ lists the number of (and percentage) of residues with an average occupancy less than 0.9.

Mol	Chain	Analysed	<RSRZ>	#RSRZ>2	OWAB(Å ²)	Q<0.9
1	A	245/286 (85%)	0.35	25 (10%) 7 12	14, 27, 63, 74	1 (0%)
1	B	248/286 (86%)	0.27	13 (5%) 26 37	15, 29, 60, 71	1 (0%)
All	All	493/572 (86%)	0.31	38 (7%) 13 21	14, 28, 63, 74	2 (0%)

All (38) RSRZ outliers are listed below:

Mol	Chain	Res	Type	RSRZ
1	A	311	ALA	5.7
1	B	409	ARG	5.2
1	B	273	LEU	5.0
1	A	335	TYR	4.8
1	A	276	GLY	4.7
1	A	267	LEU	4.6
1	A	333	PRO	4.3
1	A	269	LEU	4.3
1	B	277	CYS	4.0
1	B	278	PHE	3.7
1	B	407	LEU	3.5
1	B	408	ALA	3.5
1	A	297	LEU	3.3
1	A	328	VAL	3.2
1	A	332	GLU	3.2
1	A	271	VAL	3.2
1	B	271	VAL	3.0
1	A	334	ILE	2.9
1	A	329	VAL	2.8
1	A	264	ARG	2.7
1	A	270	GLU	2.6
1	A	273	LEU	2.6
1	A	282	TRP	2.5
1	A	278	PHE	2.5

Continued on next page...

Continued from previous page...

Mol	Chain	Res	Type	RSRZ
1	A	277	CYS	2.5
1	B	406	GLY	2.4
1	B	472	LEU	2.3
1	A	294	ILE	2.3
1	B	258	ASP	2.2
1	B	260	TRP	2.2
1	A	287	ASN	2.2
1	A	268	ARG	2.1
1	A	288	GLY	2.1
1	B	274	GLY	2.1
1	A	285	THR	2.0
1	B	297	LEU	2.0
1	A	296	THR	2.0
1	A	336	ILE	2.0

6.2 Non-standard residues in protein, DNA, RNA chains ⓘ

There are no non-standard protein/DNA/RNA residues in this entry.

6.3 Carbohydrates ⓘ

There are no carbohydrates in this entry.

6.4 Ligands ⓘ

In the following table, the Atoms column lists the number of modelled atoms in the group and the number defined in the chemical component dictionary. LLDF column lists the quality of electron density of the group with respect to its neighbouring residues in protein, DNA or RNA chains. The B-factors column lists the minimum, median, 95th percentile and maximum values of B factors of atoms in the group. The column labelled 'Q< 0.9' lists the number of atoms with occupancy less than 0.9.

Mol	Type	Chain	Res	Atoms	RSR	LLDF	B-factors(Å ²)	Q<0.9
2	SR2	A	1483	12/27	0.21	3.99	38,43,48,48	0
2	SR2	B	1345	27/27	0.34	2.85	48,63,72,74	27
2	SR2	A	1345[A]	27/27	0.17	0.41	27,39,53,56	27
2	SR2	A	1345[B]	27/27	0.17	0.36	27,39,53,56	27

6.5 Other polymers ⓘ

There are no such residues in this entry.