



Full wwPDB X-ray Structure Validation Report

Feb 26, 2014 – 09:04 PM GMT

PDB ID : 2QTK
Title : Crystal Structure of the outer membrane protein opdK from *Pseudomonas aeruginosa*
Authors : Biswas, S.; Van den Berg, B.
Deposited on : 2007-08-02
Resolution : 2.80 Å(reported)

This is a full wwPDB validation report for a publicly released PDB entry.
We welcome your comments at validation@mail.wwpdb.org
A user guide is available at <http://wwpdb.org/ValidationPDFNotes.html>

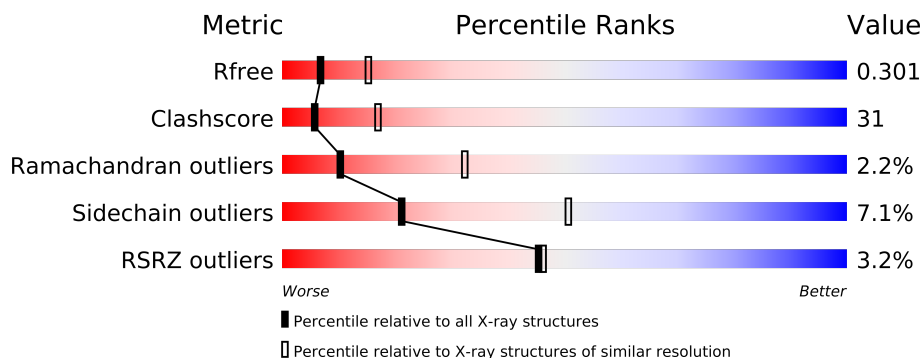
The following versions of software and data (see [references](#)) were used in the production of this report:

MolProbity : 4.02b-467
Mogul : 1.15 2013
Xtriage (Phenix) : dev-1323
EDS : stable22639
Percentile statistics : 21963
Refmac : 5.8.0049
CCP4 : 6.3.0 (Settle)
Ideal geometry (proteins) : Engh & Huber (2001)
Ideal geometry (DNA, RNA) : Parkinson et. al. (1996)
Validation Pipeline (wwPDB-VP) : stable22683

1 Overall quality at a glance

The reported resolution of this entry is 2.80 Å.

Percentile scores (ranging between 0-100) for global validation metrics of the entry are shown in the following graphic. The table shows the number of entries on which the scores are based.



Metric	Whole archive (#Entries)	Similar resolution (#Entries, resolution range(Å))
R_{free}	66092	1799 (2.80-2.80)
Clashscore	79885	2295 (2.80-2.80)
Ramachandran outliers	78287	2252 (2.80-2.80)
Sidechain outliers	78261	2254 (2.80-2.80)
RSRZ outliers	66119	1802 (2.80-2.80)

The table below summarises the geometric issues observed across the polymeric chains and their fit to the electron density. The red, orange, yellow and green segments on the lower bar indicate the fraction of residues that contain outliers for ≥ 3 , 2, 1 and 0 types of geometric quality criteria. The upper red bar (where present) indicates the fraction of residues that have poor fit to the electron density.

Mol	Chain	Length	Quality of chain
1	A	390	
1	B	390	

The following table lists non-polymeric compounds that are outliers for geometric or electron-density-fit criteria:

Mol	Type	Chain	Res	Geometry	Electron density
2	C8E	A	391	-	X
2	C8E	A	392	-	X
2	C8E	A	393	-	X
2	C8E	A	394	-	X
2	C8E	A	395	-	X
2	C8E	A	397	-	X

Continued on next page...

Continued from previous page...

Mol	Type	Chain	Res	Geometry	Electron density
2	C8E	A	398	-	X
2	C8E	A	399	-	X
2	C8E	A	400	-	X
2	C8E	A	401	-	X
2	C8E	A	402	-	X
2	C8E	B	391	-	X
2	C8E	B	392	-	X
2	C8E	B	393	-	X
2	C8E	B	394	-	X
2	C8E	B	395	-	X
2	C8E	B	396	-	X
2	C8E	B	397	-	X
2	C8E	B	398	-	X
2	C8E	B	399	-	X
2	C8E	B	400	-	X

2 Entry composition i

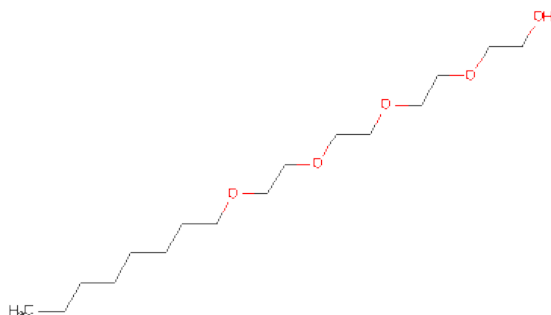
There are 2 unique types of molecules in this entry. The entry contains 6068 atoms, of which 0 are hydrogen and 0 are deuterium.

In the tables below, the ZeroOcc column contains the number of atoms modelled with zero occupancy, the AltConf column contains the number of residues with at least one atom in alternate conformation and the Trace column contains the number of residues modelled with at most 2 atoms.

- Molecule 1 is a protein called Probable porin.

Mol	Chain	Residues	Atoms					ZeroOcc	AltConf	Trace
1	A	371	Total	C	N	O	S	0	0	0
			2907	1836	519	547	5			
1	B	368	Total	C	N	O	S	0	0	0
			2888	1825	515	543	5			

- Molecule 2 is (HYDROXYETHYLOXY)TRI(ETHYLOXY)OCTANE (three-letter code: C8E) (formula: C₁₆H₃₄O₅).



Mol	Chain	Residues	Atoms			ZeroOcc	AltConf
2	B	1	Total	C	O	0	0
			20	15	5		
2	A	1	Total	C	O	0	0
			13	8	5		
2	B	1	Total	C	O	0	0
			13	8	5		
2	A	1	Total	C	O	0	0
			13	11	2		

Continued on next page...

Continued from previous page...

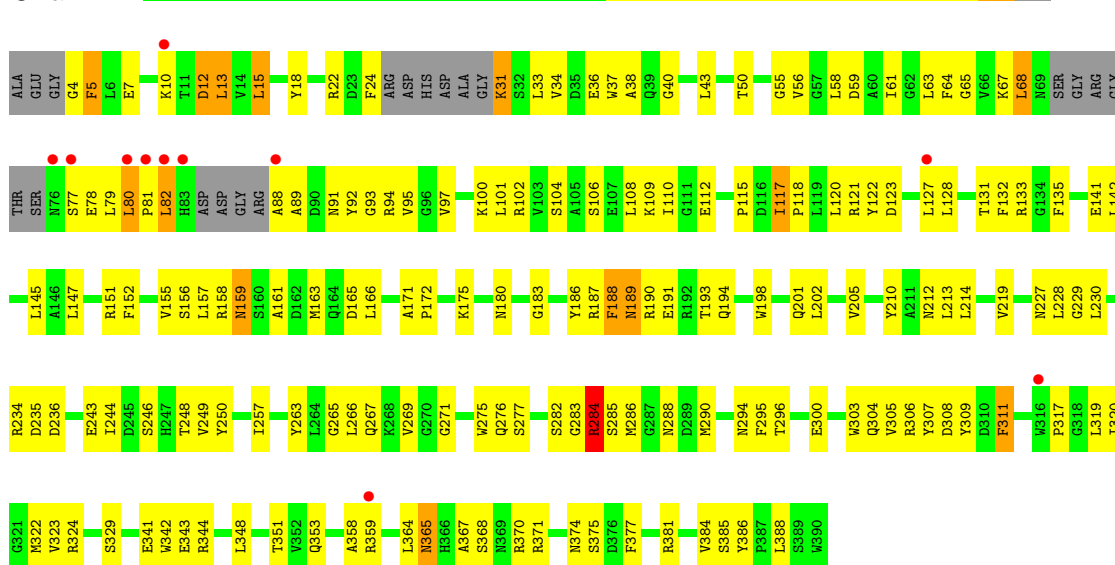
Mol	Chain	Residues	Atoms			ZeroOcc	AltConf
2	A	1	Total	C	O	0	0
			15	10	5		
2	A	1	Total	C	O	0	0
			13	11	2		
2	A	1	Total	C	O	0	0
			17	13	4		
2	A	1	Total	C		0	0
			6	6			
2	A	1	Total	C	O	0	0
			9	8	1		
2	A	1	Total	C	O	0	0
			12	10	2		
2	A	1	Total	C	O	0	0
			12	10	2		
2	A	1	Total	C	O	0	0
			12	10	2		
2	A	1	Total	C	O	0	0
			12	10	2		
2	A	1	Total	C	O	0	0
			14	12	2		
2	B	1	Total	C	O	0	0
			8	7	1		
2	B	1	Total	C	O	0	0
			12	10	2		
2	B	1	Total	C	O	0	0
			15	12	3		
2	B	1	Total	C	O	0	0
			15	12	3		
2	B	1	Total	C	O	0	0
			9	8	1		
2	B	1	Total	C		0	0
			7	7			
2	B	1	Total	C	O	0	0
			13	11	2		
2	B	1	Total	C	O	0	0
			13	11	2		

3 Residue-property plots

These plots are drawn for all protein, RNA and DNA chains in the entry. The first graphic for a chain summarises the proportions of errors displayed in the second graphic. The second graphic shows the sequence view annotated by issues in geometry and electron density. Residues are color-coded according to the number of geometric quality criteria for which they contain at least one outlier: green = 0, yellow = 1, orange = 2 and red = 3 or more. A red dot above a residue indicates a poor fit to the electron density ($RSRZ > 2$). Stretches of 2 or more consecutive residues without any outlier are shown as a green connector. Residues present in the sample, but not in the model, are shown in grey.

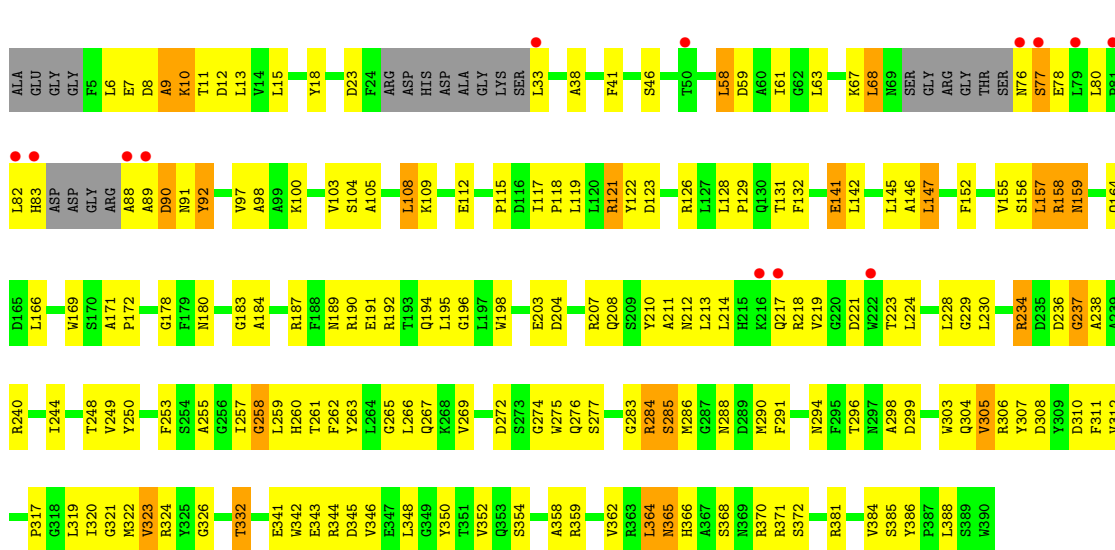
• Molecule 1: Probable porin

Chain A:



• Molecule 1: Probable porin

Chain B:



4 Data and refinement statistics i

Property	Value	Source
Space group	P 21 21 21	Depositor
Cell constants a, b, c, α , β , γ	81.89Å 96.70Å 121.41Å 90.00° 90.00° 90.00°	Depositor
Resolution (Å)	10.00 – 2.80 48.77 – 2.81	Depositor EDS
% Data completeness (in resolution range)	97.4 (10.00-2.80) 98.7 (48.77-2.81)	Depositor EDS
R_{merge}	(Not available)	Depositor
R_{sym}	(Not available)	Depositor
$\langle I/\sigma(I) \rangle$ ¹	2.88 (at 2.81Å)	Xtriage
Refinement program	CNS 1.1	Depositor
R, R_{free}	0.233 , 0.295 0.243 , 0.301	Depositor DCC
R_{free} test set	1826 reflections (7.88%)	DCC
Wilson B-factor (Å ²)	38.5	Xtriage
Anisotropy	0.252	Xtriage
Bulk solvent k_{sol} (e/Å ³), B_{sol} (Å ²)	0.34 , 22.4	EDS
Estimated twinning fraction	No twinning to report.	Xtriage
L-test for twinning	$\langle L \rangle = 0.49$, $\langle L^2 \rangle = 0.32$	Xtriage
Outliers	4 of 23772 reflections (0.017%)	Xtriage
F_o, F_c correlation	0.91	EDS
Total number of atoms	6068	wwPDB-VP
Average B, all atoms (Å ²)	32.0	wwPDB-VP

Xtriage's analysis on translational NCS is as follows: *The analyses of the Patterson function reveals a significant off-origin peak that is 42.15 % of the origin peak, indicating pseudo translational symmetry. The chance of finding a peak of this or larger height randomly in a structure without pseudo translational symmetry is equal to 2.1285e-04. The detected translational NCS is most likely also responsible for the elevated intensity ratio.*

¹Intensities estimated from amplitudes.

5 Model quality

5.1 Standard geometry

Bond lengths and bond angles in the following residue types are not validated in this section: C8E

The Z score for a bond length (or angle) is the number of standard deviations the observed value is removed from the expected value. A bond length (or angle) with $|Z| > 5$ is considered an outlier worth inspection. RMSZ is the root-mean-square of all Z scores of the bond lengths (or angles).

Mol	Chain	Bond lengths		Bond angles	
		RMSZ	$\# Z > 5$	RMSZ	$\# Z > 5$
1	A	0.41	0/2974	0.67	0/4019
1	B	0.41	0/2955	0.66	0/3995
All	All	0.41	0/5929	0.67	0/8014

There are no bond length outliers.

There are no bond angle outliers.

There are no chirality outliers.

There are no planarity outliers.

5.2 Close contacts

In the following table, the Non-H and H(model) columns list the number of non-hydrogen atoms and hydrogen atoms in the chain respectively. The H(added) column lists the number of hydrogens added by MolProbity. The Clashes column lists the number of clashes within the asymmetric unit, and the number in parentheses is this value normalized per 1000 atoms of the molecule in the chain. The Symm-Clashes column gives symmetry related clashes, in the same way as for the Clashes column.

Mol	Chain	Non-H	H(model)	H(added)	Clashes	Symm-Clashes
1	A	2907	0	2782	186	0
1	B	2888	0	2761	192	0
2	A	148	0	237	10	0
2	B	125	0	201	7	0
All	All	6068	0	5981	379	0

Clashscore is defined as the number of clashes calculated for the entry per 1000 atoms (including hydrogens) of the entry. The overall clashscore for this entry is 31.

All (379) close contacts within the same asymmetric unit are listed below.

Atom-1	Atom-2	Distance(Å)	Clash(Å)
1:A:77:SER:HB3	1:A:82:LEU:HG	1.37	1.02
1:A:13:LEU:HD23	1:A:43:LEU:HD13	1.44	0.98
1:A:365:ASN:HD21	1:A:381:ARG:HD3	1.28	0.97
1:B:142:LEU:HD12	1:B:142:LEU:H	1.28	0.95
1:A:36:GLU:OE1	1:A:78:GLU:HB2	1.72	0.90
1:B:119:LEU:HD22	1:B:208:GLN:HE21	1.37	0.89
1:A:344:ARG:HH11	2:A:392:C8E:H101	1.38	0.88
1:B:77:SER:HB3	1:B:82:LEU:HG	1.55	0.87
1:B:298:ALA:HB3	1:B:332:THR:HG23	1.58	0.85
1:A:159:ASN:HD22	1:A:159:ASN:H	1.22	0.83
1:B:290:MET:HE3	1:B:326:GLY:HA3	1.61	0.83
1:B:155:VAL:CG2	1:B:166:LEU:HG	2.09	0.82
1:B:207:ARG:HE	1:B:234:ARG:HD2	1.44	0.82
1:B:145:LEU:HD21	1:B:147:LEU:HD13	1.59	0.82
1:B:159:ASN:H	1:B:159:ASN:HD22	1.25	0.82
1:A:117:ILE:HD11	1:A:120:LEU:HB3	1.62	0.81
1:B:121:ARG:HD3	1:B:284:ARG:HD2	1.63	0.81
1:B:119:LEU:HD22	1:B:208:GLN:NE2	1.98	0.79
1:B:344:ARG:NH2	1:B:366:HIS:HD2	1.80	0.79
1:B:207:ARG:NE	1:B:234:ARG:HD2	1.97	0.79
1:A:80:LEU:HD23	1:A:81:PRO:HD2	1.64	0.78
1:A:80:LEU:HG	1:A:92:TYR:CE1	2.20	0.77
1:B:145:LEU:CD2	1:B:147:LEU:HD13	2.14	0.76
1:B:155:VAL:HG21	1:B:166:LEU:HG	1.67	0.76
1:B:145:LEU:HD23	1:B:146:ALA:N	2.00	0.76
1:B:204:ASP:HA	1:B:237:GLY:O	1.86	0.76
1:A:371:ARG:HH21	1:A:374:ASN:HD22	1.35	0.75
1:B:142:LEU:CD1	1:B:142:LEU:H	2.01	0.74
1:B:142:LEU:HD12	1:B:142:LEU:N	2.02	0.73
1:B:299:ASP:OD2	1:B:332:THR:HG21	1.89	0.72
1:B:323:VAL:HG12	1:B:346:VAL:HG22	1.70	0.71
1:A:290:MET:HE1	1:A:343:GLU:HB3	1.72	0.71
1:B:159:ASN:HD22	1:B:159:ASN:N	1.84	0.71
1:B:344:ARG:HH22	1:B:366:HIS:HD2	1.37	0.71
1:A:344:ARG:NH1	2:A:392:C8E:H101	2.06	0.70
1:A:159:ASN:HD22	1:A:159:ASN:N	1.85	0.70
1:A:13:LEU:CD2	1:A:43:LEU:HD13	2.21	0.70
1:A:267:GLN:HE22	1:A:286:MET:HG3	1.54	0.70
1:A:290:MET:CE	1:A:343:GLU:HB3	2.21	0.70
1:B:157:LEU:HD22	1:B:164:GLN:HE22	1.56	0.70
1:A:132:PHE:CD1	1:A:155:VAL:HG12	2.26	0.70
1:A:159:ASN:ND2	1:A:159:ASN:H	1.88	0.70
1:A:31:LYS:HZ1	1:A:34:VAL:HG23	1.56	0.70

Continued on next page...

Continued from previous page...

Atom-1	Atom-2	Distance(Å)	Clash(Å)
1:A:121:ARG:HD3	1:A:284:ARG:HD2	1.73	0.69
1:A:31:LYS:HE2	1:A:33:LEU:H	1.58	0.69
1:B:230:LEU:HD13	1:B:249:VAL:HG12	1.74	0.69
1:B:121:ARG:HB3	1:B:284:ARG:NH1	2.08	0.68
1:A:304:GLN:HG2	1:A:305:VAL:N	2.07	0.68
1:A:219:VAL:HG23	1:A:219:VAL:O	1.94	0.68
1:A:306:ARG:HG3	1:A:324:ARG:HB3	1.76	0.68
1:B:131:THR:HG22	1:B:156:SER:HB3	1.75	0.68
1:B:306:ARG:HG3	1:B:324:ARG:HB3	1.76	0.68
1:A:386:TYR:HE1	1:A:388:LEU:HG	1.58	0.67
1:A:365:ASN:HD22	1:A:365:ASN:C	1.98	0.67
1:B:67:LYS:HB2	1:B:80:LEU:CD1	2.24	0.67
1:A:10:LYS:HG3	1:A:12:ASP:OD1	1.93	0.67
1:B:219:VAL:O	1:B:219:VAL:HG23	1.95	0.67
1:B:105:ALA:HB3	1:B:141:GLU:OE2	1.94	0.67
1:A:155:VAL:HG11	1:A:166:LEU:HG	1.76	0.66
1:A:133:ARG:HB2	1:A:163:MET:HE1	1.76	0.66
1:A:77:SER:HB2	1:A:80:LEU:O	1.95	0.66
1:B:159:ASN:H	1:B:159:ASN:ND2	1.90	0.66
1:B:344:ARG:HD2	2:B:391:C8E:H41	1.78	0.66
1:B:265:GLY:O	1:B:303:TRP:HA	1.95	0.65
1:B:58:LEU:C	1:B:58:LEU:HD23	2.17	0.65
1:A:358:ALA:O	1:A:359:ARG:HB2	1.96	0.65
1:B:365:ASN:HD22	1:B:365:ASN:C	2.01	0.65
1:A:371:ARG:HH21	1:A:374:ASN:ND2	1.96	0.64
1:B:131:THR:CG2	1:B:156:SER:HB3	2.28	0.64
1:B:320:ILE:HG22	1:B:321:GLY:N	2.12	0.64
1:A:189:ASN:OD1	1:A:190:ARG:N	2.30	0.64
1:B:299:ASP:HB2	1:B:332:THR:HG22	1.80	0.64
1:B:237:GLY:O	1:B:238:ALA:HB3	1.97	0.64
1:B:218:ARG:HG3	1:B:218:ARG:HH11	1.63	0.63
1:B:323:VAL:HG11	2:B:391:C8E:H81	1.79	0.63
1:A:58:LEU:HD11	1:A:97:VAL:HG13	1.79	0.63
1:A:59:ASP:OD2	1:A:100:LYS:HD3	1.98	0.63
1:A:67:LYS:HB2	1:A:80:LEU:HD13	1.81	0.63
1:A:67:LYS:NZ	1:A:88:ALA:HB1	2.14	0.63
1:A:228:LEU:HB3	2:A:398:C8E:H51	1.80	0.62
1:A:155:VAL:CG1	1:A:166:LEU:HG	2.28	0.62
1:B:283:GLY:O	1:B:285:SER:N	2.32	0.62
1:A:311:PHE:HB2	1:A:319:LEU:O	2.00	0.62
1:B:145:LEU:HD23	1:B:146:ALA:H	1.65	0.62
1:B:77:SER:CB	1:B:82:LEU:HG	2.29	0.61

Continued on next page...

Continued from previous page...

Atom-1	Atom-2	Distance(Å)	Clash(Å)
1:B:221:ASP:HB3	1:B:257:ILE:CD1	2.30	0.61
1:B:290:MET:CE	1:B:326:GLY:HA3	2.29	0.61
1:A:290:MET:HE2	1:A:295:PHE:CE1	2.36	0.61
1:B:8:ASP:O	1:B:9:ALA:HB2	2.00	0.61
1:B:132:PHE:CD1	1:B:155:VAL:HG22	2.36	0.61
1:B:67:LYS:HD3	1:B:89:ALA:O	2.01	0.61
1:B:352:VAL:HG12	1:B:358:ALA:HA	1.83	0.60
1:B:221:ASP:HB3	1:B:257:ILE:HD13	1.84	0.60
1:B:304:GLN:HG2	1:B:305:VAL:N	2.16	0.60
1:B:298:ALA:CB	1:B:332:THR:HG23	2.29	0.60
1:A:275:TRP:HB3	1:A:296:THR:HB	1.84	0.60
1:A:55:GLY:O	1:A:101:LEU:HA	2.02	0.60
1:B:228:LEU:HB3	2:B:400:C8E:H111	1.84	0.59
1:B:298:ALA:O	1:B:332:THR:HG22	2.01	0.59
2:A:391:C8E:H172	2:A:399:C8E:H102	1.84	0.59
1:A:133:ARG:HB2	1:A:163:MET:CE	2.33	0.58
1:A:80:LEU:HD23	1:A:81:PRO:CD	2.34	0.58
1:B:261:THR:HB	1:B:308:ASP:HB2	1.86	0.58
1:A:151:ARG:HD2	1:A:180:ASN:ND2	2.17	0.58
1:A:50:THR:OG1	1:A:56:VAL:HG22	2.02	0.58
1:B:67:LYS:HB2	1:B:80:LEU:HD11	1.85	0.58
1:A:230:LEU:HD13	1:A:249:VAL:HG12	1.86	0.58
1:B:344:ARG:HH22	1:B:366:HIS:CD2	2.20	0.58
1:A:10:LYS:HE2	1:A:12:ASP:CG	2.24	0.57
1:B:10:LYS:O	1:B:10:LYS:HD3	2.03	0.57
1:B:123:ASP:OD1	1:B:158:ARG:NH1	2.36	0.57
1:A:267:GLN:HE22	1:A:288:ASN:H	1.52	0.57
1:B:157:LEU:HD22	1:B:164:GLN:NE2	2.19	0.57
1:B:229:GLY:HA3	1:B:250:TYR:CE2	2.39	0.57
1:A:117:ILE:CD1	1:A:120:LEU:HB3	2.35	0.57
1:A:65:GLY:O	1:A:91:ASN:HB2	2.04	0.57
1:B:122:TYR:O	1:B:284:ARG:NH2	2.38	0.56
1:B:342:TRP:CZ2	1:B:370:ARG:HG3	2.40	0.56
1:A:267:GLN:NE2	1:A:288:ASN:H	2.03	0.56
1:A:322:MET:HG2	1:A:323:VAL:N	2.19	0.56
1:B:187:ARG:NH2	1:B:194:GLN:NE2	2.53	0.56
1:A:117:ILE:O	1:A:121:ARG:HG2	2.06	0.56
1:B:230:LEU:CD1	1:B:249:VAL:HG12	2.36	0.56
1:B:67:LYS:HB2	1:B:80:LEU:HD13	1.87	0.56
1:A:61:ILE:HG12	1:A:63:LEU:HD21	1.88	0.56
1:A:31:LYS:HE2	1:A:33:LEU:N	2.20	0.56
1:A:117:ILE:HD13	1:A:120:LEU:O	2.04	0.55

Continued on next page...

Continued from previous page...

Atom-1	Atom-2	Distance(Å)	Clash(Å)
1:B:178:GLY:O	1:B:203:GLU:HG3	2.06	0.55
1:B:105:ALA:HB3	1:B:141:GLU:CD	2.27	0.55
1:B:92:TYR:OH	1:B:128:LEU:HD23	2.06	0.55
1:A:165:ASP:HB2	1:A:175:LYS:HD2	1.87	0.55
1:A:37:TRP:CE3	1:A:68:LEU:HD12	2.41	0.55
1:A:186:TYR:CE2	1:A:188:PHE:HB3	2.41	0.55
1:B:253:PHE:HZ	2:B:394:C8E:H61	1.71	0.55
1:A:18:TYR:CD2	1:A:79:LEU:HD21	2.41	0.55
1:A:344:ARG:HG3	1:A:344:ARG:HH11	1.72	0.55
1:A:121:ARG:HB3	1:A:284:ARG:NH1	2.22	0.55
1:B:59:ASP:OD2	1:B:100:LYS:HD3	2.07	0.55
1:A:31:LYS:NZ	1:A:34:VAL:HG23	2.21	0.54
1:A:40:GLY:N	1:A:127:LEU:HD11	2.22	0.54
1:B:263:TYR:HB2	1:B:306:ARG:HB3	1.88	0.54
1:A:386:TYR:CE1	1:A:388:LEU:HG	2.41	0.54
1:A:351:THR:HG21	1:A:359:ARG:HH21	1.73	0.54
1:A:265:GLY:O	1:A:303:TRP:HA	2.08	0.54
1:B:145:LEU:HD21	1:B:147:LEU:CD1	2.32	0.54
1:B:267:GLN:HB3	1:B:288:ASN:HD22	1.73	0.54
1:B:189:ASN:O	1:B:190:ARG:HG2	2.08	0.53
1:A:67:LYS:HZ3	1:A:88:ALA:HB1	1.73	0.53
1:A:92:TYR:CZ	1:A:128:LEU:HD23	2.43	0.53
1:B:155:VAL:HG23	1:B:166:LEU:HG	1.88	0.53
1:B:307:TYR:HB3	1:B:323:VAL:HG23	1.90	0.53
1:B:237:GLY:O	1:B:238:ALA:CB	2.57	0.53
1:A:263:TYR:HB2	1:A:306:ARG:HB3	1.89	0.53
1:B:189:ASN:O	1:B:192:ARG:HG2	2.08	0.53
1:B:306:ARG:HD3	1:B:322:MET:HG3	1.91	0.53
1:A:101:LEU:O	1:A:101:LEU:HD12	2.09	0.53
1:B:155:VAL:HG23	1:B:166:LEU:CD1	2.39	0.53
1:A:117:ILE:HD13	1:A:117:ILE:H	1.70	0.53
1:B:91:ASN:O	1:B:92:TYR:HB3	2.08	0.53
1:A:365:ASN:ND2	1:A:381:ARG:HD3	2.11	0.53
1:A:24:PHE:CD1	1:A:377:PHE:HB3	2.43	0.53
1:A:319:LEU:HD11	1:A:348:LEU:HD22	1.91	0.53
1:B:97:VAL:HG12	1:B:98:ALA:N	2.24	0.53
1:A:300:GLU:OE2	1:A:341:GLU:OE1	2.26	0.52
1:A:61:ILE:CD1	1:A:63:LEU:HD21	2.39	0.52
1:A:276:GLN:O	1:A:277:SER:HB3	2.09	0.52
1:A:306:ARG:HD3	1:A:308:ASP:OD1	2.09	0.52
1:B:207:ARG:HG3	1:B:234:ARG:HG3	1.92	0.52
1:B:15:LEU:O	1:B:385:SER:HA	2.10	0.52

Continued on next page...

Continued from previous page...

Atom-1	Atom-2	Distance(Å)	Clash(Å)
1:A:269:VAL:HG21	1:A:296:THR:HA	1.91	0.52
1:B:115:PRO:HG3	1:B:152:PHE:CZ	2.45	0.52
1:B:112:GLU:OE1	1:B:131:THR:HG21	2.10	0.52
1:A:188:PHE:O	1:A:189:ASN:HB3	2.10	0.52
1:B:190:ARG:HD3	1:B:192:ARG:HH21	1.73	0.52
1:B:103:VAL:O	1:B:104:SER:HB3	2.10	0.52
1:B:10:LYS:C	1:B:10:LYS:HD3	2.29	0.51
1:A:157:LEU:HB3	1:A:159:ASN:ND2	2.25	0.51
1:B:118:PRO:HB3	1:B:210:TYR:CE2	2.45	0.51
1:A:93:GLY:O	1:A:161:ALA:HB1	2.10	0.51
1:B:255:ALA:HB3	1:B:262:PHE:HB2	1.93	0.51
1:B:184:ALA:O	1:B:196:GLY:HA2	2.11	0.51
1:A:306:ARG:HG2	1:A:307:TYR:N	2.25	0.51
1:A:351:THR:HG21	1:A:359:ARG:NH2	2.26	0.51
1:A:187:ARG:O	1:A:188:PHE:CD1	2.64	0.51
1:B:224:LEU:HD23	2:B:395:C8E:H61	1.91	0.51
1:B:210:TYR:CZ	1:B:212:ASN:HB2	2.45	0.51
1:A:234:ARG:HG2	1:A:234:ARG:HH11	1.75	0.51
1:B:364:LEU:HD23	1:B:365:ASN:N	2.25	0.51
1:B:218:ARG:HG3	1:B:218:ARG:NH1	2.25	0.51
1:A:257:ILE:O	1:A:257:ILE:HG23	2.10	0.51
1:A:213:LEU:HD12	1:A:214:LEU:N	2.25	0.51
1:B:240:ARG:HG3	1:B:240:ARG:HH11	1.75	0.51
1:B:207:ARG:CD	1:B:234:ARG:HD2	2.40	0.50
1:B:68:LEU:HD12	1:B:68:LEU:O	2.11	0.50
1:B:207:ARG:NH1	1:B:236:ASP:OD1	2.44	0.50
1:B:121:ARG:HB3	1:B:284:ARG:HH11	1.77	0.50
1:A:323:VAL:HG11	2:A:392:C8E:H41	1.93	0.50
1:A:92:TYR:OH	1:A:128:LEU:HD23	2.11	0.50
1:B:320:ILE:CG2	1:B:321:GLY:N	2.74	0.50
1:B:46:SER:HA	1:B:59:ASP:OD1	2.11	0.50
1:A:95:VAL:HG23	2:A:396:C8E:H51	1.93	0.50
1:B:219:VAL:O	1:B:219:VAL:CG2	2.59	0.50
1:A:365:ASN:HD21	1:A:381:ARG:HB2	1.76	0.49
1:B:207:ARG:HE	1:B:234:ARG:NH1	2.09	0.49
1:A:265:GLY:C	1:A:266:LEU:HD12	2.32	0.49
1:B:224:LEU:N	1:B:224:LEU:HD12	2.27	0.49
1:B:108:LEU:HD23	1:B:109:LYS:N	2.27	0.49
1:A:365:ASN:ND2	1:A:381:ARG:HB2	2.28	0.49
1:A:94:ARG:HH11	1:A:94:ARG:HG3	1.78	0.49
1:B:41:PHE:CD1	1:B:41:PHE:N	2.80	0.49
1:B:155:VAL:HG12	1:B:156:SER:N	2.28	0.49

Continued on next page...

Continued from previous page...

Atom-1	Atom-2	Distance(Å)	Clash(Å)
1:B:386:TYR:HE1	1:B:388:LEU:HG	1.78	0.49
1:B:159:ASN:ND2	1:B:159:ASN:N	2.53	0.48
1:B:97:VAL:HG12	1:B:98:ALA:H	1.77	0.48
1:B:195:LEU:HD21	1:B:213:LEU:HD13	1.95	0.48
1:B:67:LYS:HE2	1:B:88:ALA:HB1	1.94	0.48
1:B:105:ALA:HB3	1:B:141:GLU:HA	1.95	0.48
1:A:159:ASN:N	1:A:159:ASN:ND2	2.53	0.48
1:A:267:GLN:NE2	1:A:286:MET:HG3	2.26	0.48
1:B:263:TYR:CD1	1:B:306:ARG:HD2	2.48	0.48
1:B:126:ARG:HG3	1:B:158:ARG:NE	2.29	0.48
1:B:100:LYS:HG2	1:B:109:LYS:HG2	1.95	0.48
1:B:6:LEU:O	1:B:7:GLU:C	2.51	0.48
1:A:131:THR:CG2	1:A:156:SER:HB3	2.43	0.48
1:B:258:GLY:C	1:B:260:HIS:H	2.16	0.48
1:A:108:LEU:CD2	1:A:110:ILE:HG13	2.43	0.48
1:B:267:GLN:HB3	1:B:288:ASN:ND2	2.29	0.48
1:A:309:TYR:O	1:A:320:ILE:HG13	2.14	0.48
1:B:258:GLY:O	1:B:260:HIS:N	2.47	0.48
1:B:354:SER:C	1:B:358:ALA:HB2	2.34	0.48
1:A:131:THR:HG22	1:A:156:SER:HB3	1.94	0.48
1:B:10:LYS:HG2	1:B:11:THR:N	2.29	0.48
1:A:122:TYR:O	1:A:284:ARG:NH2	2.47	0.47
1:A:121:ARG:HB3	1:A:284:ARG:HH11	1.77	0.47
1:A:151:ARG:CD	1:A:180:ASN:ND2	2.78	0.47
1:A:290:MET:HE2	1:A:295:PHE:CZ	2.48	0.47
1:A:38:ALA:CB	1:A:127:LEU:HD22	2.45	0.47
1:A:4:GLY:O	1:A:7:GLU:N	2.47	0.47
1:B:207:ARG:CG	1:B:234:ARG:HD2	2.44	0.47
1:B:298:ALA:O	1:B:332:THR:CG2	2.63	0.47
1:B:240:ARG:NH1	1:B:240:ARG:HG3	2.30	0.47
1:A:210:TYR:CZ	1:A:212:ASN:HB2	2.49	0.47
1:A:290:MET:HE2	1:A:295:PHE:HE1	1.79	0.47
1:A:108:LEU:HD23	1:A:109:LYS:N	2.30	0.47
1:B:365:ASN:ND2	1:B:381:ARG:HB2	2.30	0.47
1:B:145:LEU:CD2	1:B:146:ALA:N	2.77	0.47
1:B:352:VAL:CG1	1:B:358:ALA:HA	2.45	0.47
1:A:80:LEU:HG	1:A:92:TYR:HE1	1.72	0.47
1:A:151:ARG:HE	1:A:180:ASN:HD21	1.63	0.47
1:A:282:SER:OG	1:A:284:ARG:HB3	2.16	0.46
1:A:307:TYR:CD2	2:A:394:C8E:H111	2.51	0.46
1:A:228:LEU:CD1	1:A:228:LEU:N	2.78	0.46
1:B:306:ARG:HD3	1:B:308:ASP:OD1	2.16	0.46

Continued on next page...

Continued from previous page...

Atom-1	Atom-2	Distance(Å)	Clash(Å)
1:B:92:TYR:CZ	1:B:128:LEU:HD23	2.50	0.46
1:A:246:SER:HA	1:A:271:GLY:HA3	1.97	0.46
1:B:218:ARG:CG	1:B:223:THR:HG23	2.46	0.46
1:A:112:GLU:OE1	1:A:131:THR:HG21	2.15	0.46
1:A:38:ALA:HB1	1:A:127:LEU:HD22	1.98	0.46
1:B:386:TYR:CE1	1:B:388:LEU:HG	2.51	0.46
1:B:323:VAL:HG22	2:B:392:C8E:H201	1.97	0.46
1:B:224:LEU:H	1:B:224:LEU:HD12	1.81	0.46
1:A:193:THR:HG22	1:A:194:GLN:N	2.30	0.46
1:A:31:LYS:HE3	1:A:33:LEU:O	2.16	0.46
1:B:126:ARG:HB2	1:B:158:ARG:HD3	1.97	0.45
1:B:207:ARG:HE	1:B:234:ARG:CD	2.21	0.45
1:A:229:GLY:HA3	1:A:250:TYR:CE2	2.52	0.45
1:B:311:PHE:HB2	1:B:319:LEU:O	2.15	0.45
1:A:190:ARG:O	1:A:191:GLU:HB2	2.16	0.45
1:B:61:ILE:HD11	1:B:63:LEU:HD21	1.98	0.45
1:B:90:ASP:OD2	1:B:90:ASP:N	2.49	0.45
1:A:171:ALA:N	1:A:172:PRO:HD3	2.32	0.45
1:B:291:PHE:CE1	1:B:345:ASP:HB3	2.51	0.45
1:A:359:ARG:CZ	1:A:359:ARG:HA	2.46	0.45
1:A:343:GLU:HA	1:A:368:SER:O	2.17	0.45
1:B:365:ASN:HD21	1:B:381:ARG:HB2	1.81	0.45
1:B:76:ASN:O	1:B:77:SER:O	2.35	0.45
1:A:248:THR:HG21	1:A:286:MET:HE1	1.97	0.45
1:A:104:SER:HG	1:A:141:GLU:CD	2.19	0.45
1:B:117:ILE:HB	1:B:118:PRO:HD2	1.97	0.44
1:B:276:GLN:O	1:B:277:SER:HB2	2.17	0.44
1:B:8:ASP:O	1:B:9:ALA:CB	2.64	0.44
1:A:214:LEU:HD23	1:A:227:ASN:HA	2.00	0.44
1:B:260:HIS:ND1	1:B:307:TYR:OH	2.50	0.44
1:A:115:PRO:HG3	1:A:152:PHE:CZ	2.52	0.44
1:A:234:ARG:HA	1:A:244:ILE:O	2.17	0.44
1:B:38:ALA:HA	1:B:68:LEU:HG	1.99	0.44
1:A:135:PHE:CE2	2:A:395:C8E:H141	2.52	0.44
1:B:275:TRP:HB3	1:B:296:THR:HB	1.99	0.44
1:B:257:ILE:O	1:B:258:GLY:O	2.36	0.44
1:A:13:LEU:HD12	1:A:15:LEU:CD1	2.47	0.44
1:A:235:ASP:HB3	1:A:244:ILE:HB	1.99	0.44
1:A:186:TYR:CZ	1:A:188:PHE:HB3	2.53	0.44
1:A:61:ILE:HD11	1:A:63:LEU:HD21	2.00	0.44
1:B:117:ILE:HB	1:B:118:PRO:CD	2.48	0.44
1:B:80:LEU:HD23	1:B:92:TYR:CE1	2.53	0.43

Continued on next page...

Continued from previous page...

Atom-1	Atom-2	Distance(Å)	Clash(Å)
1:A:193:THR:HG22	1:A:194:GLN:H	1.82	0.43
1:B:303:TRP:HZ3	1:B:305:VAL:HG22	1.83	0.43
1:A:365:ASN:ND2	1:A:365:ASN:C	2.68	0.43
1:A:300:GLU:HA	1:A:329:SER:O	2.19	0.43
1:A:290:MET:HE3	1:A:343:GLU:HB3	1.96	0.43
1:A:359:ARG:HH11	1:A:359:ARG:HG2	1.83	0.43
1:A:344:ARG:O	1:A:367:ALA:HA	2.17	0.43
1:B:108:LEU:HD12	2:B:396:C8E:H71	2.00	0.43
1:A:22:ARG:HG3	1:A:377:PHE:CD2	2.53	0.43
1:B:341:GLU:OE2	1:B:371:ARG:HD2	2.18	0.43
1:B:269:VAL:O	1:B:299:ASP:HA	2.19	0.43
1:B:250:TYR:C	1:B:250:TYR:CD1	2.91	0.43
1:A:235:ASP:OD2	1:A:243:GLU:HA	2.19	0.43
1:A:118:PRO:HB3	1:A:210:TYR:CE2	2.54	0.43
1:A:202:LEU:HD23	1:A:205:VAL:HG11	1.99	0.43
1:A:93:GLY:O	1:A:94:ARG:HB2	2.18	0.43
1:A:145:LEU:C	1:A:145:LEU:HD13	2.38	0.43
1:A:10:LYS:HE2	1:A:12:ASP:OD1	2.18	0.43
1:A:37:TRP:CD2	1:A:68:LEU:HD11	2.54	0.43
1:A:155:VAL:HG13	1:A:166:LEU:CD1	2.48	0.43
1:A:31:LYS:CE	1:A:33:LEU:H	2.29	0.43
1:B:310:ASP:HA	1:B:320:ILE:HD13	2.01	0.43
1:A:151:ARG:NE	1:A:180:ASN:HD21	2.17	0.43
1:A:61:ILE:CG1	1:A:63:LEU:HD21	2.48	0.42
1:A:101:LEU:C	1:A:101:LEU:HD12	2.40	0.42
1:B:306:ARG:CG	1:B:324:ARG:HB3	2.45	0.42
1:B:304:GLN:CG	1:B:305:VAL:N	2.83	0.42
1:B:365:ASN:HD21	1:B:381:ARG:HD3	1.82	0.42
1:A:228:LEU:N	1:A:228:LEU:HD12	2.35	0.42
1:A:229:GLY:HA3	1:A:250:TYR:CZ	2.55	0.42
1:B:183:GLY:HA3	1:B:198:TRP:CE3	2.55	0.42
1:A:304:GLN:CG	1:A:305:VAL:N	2.80	0.42
1:B:364:LEU:C	1:B:364:LEU:CD2	2.88	0.42
1:A:187:ARG:O	1:A:188:PHE:O	2.38	0.42
1:B:190:ARG:O	1:B:191:GLU:HB2	2.20	0.42
1:B:180:ASN:ND2	1:B:203:GLU:OE2	2.53	0.42
1:A:22:ARG:HG3	1:A:377:PHE:HD2	1.84	0.42
1:B:213:LEU:O	1:B:214:LEU:HD23	2.20	0.42
1:A:187:ARG:HA	1:A:194:GLN:HG3	2.02	0.42
1:A:151:ARG:HD2	1:A:180:ASN:HD21	1.85	0.42
1:A:187:ARG:O	1:A:193:THR:O	2.38	0.42
1:A:342:TRP:CZ2	1:A:370:ARG:HG3	2.55	0.42

Continued on next page...

Continued from previous page...

Atom-1	Atom-2	Distance(Å)	Clash(Å)
1:B:365:ASN:C	1:B:365:ASN:ND2	2.68	0.41
1:B:10:LYS:HE3	1:B:12:ASP:OD1	2.19	0.41
1:B:63:LEU:HD22	1:B:129:PRO:HD2	2.01	0.41
1:B:274:GLY:O	1:B:276:GLN:NE2	2.52	0.41
1:A:351:THR:O	1:A:353:GLN:NE2	2.50	0.41
1:A:13:LEU:HD22	1:A:13:LEU:HA	1.92	0.41
1:B:77:SER:HB3	1:B:82:LEU:CG	2.39	0.41
1:B:155:VAL:HG23	1:B:166:LEU:CG	2.51	0.41
1:A:151:ARG:CD	1:A:180:ASN:HD21	2.33	0.41
1:A:94:ARG:HG3	1:A:94:ARG:NH1	2.35	0.41
1:B:343:GLU:HA	1:B:368:SER:O	2.20	0.41
1:A:102:ARG:HG2	1:A:106:SER:O	2.19	0.41
1:B:310:ASP:C	1:B:312:VAL:H	2.23	0.41
1:A:283:GLY:O	1:A:285:SER:N	2.53	0.41
1:B:204:ASP:O	1:B:240:ARG:HG2	2.20	0.41
1:B:211:ALA:HB3	1:B:230:LEU:HB3	2.02	0.41
1:A:384:VAL:HG21	2:A:391:C8E:H191	2.02	0.41
1:A:123:ASP:OD1	1:A:158:ARG:HD3	2.21	0.41
1:B:244:ILE:HD13	1:B:276:GLN:CD	2.40	0.41
1:A:341:GLU:CB	1:A:371:ARG:HG3	2.51	0.41
1:A:4:GLY:O	1:A:5:PHE:C	2.59	0.41
1:A:102:ARG:HB3	1:A:102:ARG:CZ	2.50	0.41
1:A:374:ASN:CG	1:A:375:SER:H	2.24	0.41
1:B:218:ARG:HG2	1:B:223:THR:HG23	2.03	0.41
1:B:358:ALA:O	1:B:359:ARG:CB	2.69	0.41
1:A:235:ASP:OD2	1:A:244:ILE:N	2.42	0.41
1:B:248:THR:HG21	1:B:286:MET:CE	2.51	0.41
1:B:362:VAL:HG22	1:B:384:VAL:HG22	2.02	0.41
1:B:348:LEU:HA	1:B:348:LEU:HD23	1.93	0.41
1:B:169:TRP:O	1:B:172:PRO:HD3	2.21	0.41
1:B:219:VAL:HG22	1:B:224:LEU:CD1	2.51	0.41
1:B:171:ALA:N	1:B:172:PRO:HD3	2.36	0.41
1:A:67:LYS:O	1:A:68:LEU:HB3	2.21	0.40
1:B:319:LEU:HD13	1:B:350:TYR:HB2	2.03	0.40
1:A:183:GLY:HA3	1:A:198:TRP:CE3	2.56	0.40
1:A:15:LEU:O	1:A:385:SER:HA	2.22	0.40
1:B:58:LEU:C	1:B:58:LEU:CD2	2.88	0.40
1:A:61:ILE:HG12	1:A:63:LEU:CD2	2.51	0.40
1:A:64:PHE:HB2	2:A:396:C8E:H32	2.02	0.40
1:A:4:GLY:N	1:A:7:GLU:HB2	2.36	0.40
1:A:201:GLN:HE21	1:A:236:ASP:CG	2.25	0.40
1:B:33:LEU:C	1:B:33:LEU:HD12	2.42	0.40

There are no symmetry-related clashes.

5.3 Torsion angles

5.3.1 Protein backbone ⓘ

In the following table, the Percentiles column shows the percent Ramachandran outliers of the chain as a percentile score with respect to all X-ray entries followed by that with respect to entries of similar resolution. The Analysed column shows the number of residues for which the backbone conformation was analysed, and the total number of residues.

Mol	Chain	Analysed	Favoured	Allowed	Outliers	Percentiles	
1	A	363/390 (93%)	319 (88%)	37 (10%)	7 (2%)	12	37
1	B	360/390 (92%)	320 (89%)	31 (9%)	9 (2%)	9	28
All	All	723/780 (93%)	639 (88%)	68 (9%)	16 (2%)	10	32

All (16) Ramachandran outliers are listed below:

Mol	Chain	Res	Type
1	A	5	PHE
1	A	89	ALA
1	A	188	PHE
1	B	9	ALA
1	B	77	SER
1	B	237	GLY
1	B	258	GLY
1	B	284	ARG
1	A	311	PHE
1	A	317	PRO
1	A	189	ASN
1	A	284	ARG
1	B	141	GLU
1	B	259	LEU
1	B	317	PRO
1	B	78	GLU

5.3.2 Protein sidechains ⓘ

In the following table, the Percentiles column shows the percent sidechain outliers of the chain as a percentile score with respect to all X-ray entries followed by that with respect to entries of similar resolution. The Analysed column shows the number of residues for which the sidechain conformation was analysed, and the total number of residues.

Mol	Chain	Analysed	Rotameric	Outliers	Percentiles	
1	A	297/309 (96%)	282 (95%)	15 (5%)	33	69
1	B	295/309 (96%)	268 (91%)	27 (9%)	13	36
All	All	592/618 (96%)	550 (93%)	42 (7%)	21	51

All (42) residues with a non-rotameric sidechain are listed below:

Mol	Chain	Res	Type
1	A	12	ASP
1	A	13	LEU
1	A	15	LEU
1	A	31	LYS
1	A	68	LEU
1	A	80	LEU
1	A	82	LEU
1	A	117	ILE
1	A	142	LEU
1	A	147	LEU
1	A	159	ASN
1	A	284	ARG
1	A	294	ASN
1	A	364	LEU
1	A	365	ASN
1	B	10	LYS
1	B	13	LEU
1	B	18	TYR
1	B	23	ASP
1	B	58	LEU
1	B	68	LEU
1	B	83	HIS
1	B	90	ASP
1	B	92	TYR
1	B	108	LEU
1	B	121	ARG
1	B	147	LEU
1	B	157	LEU
1	B	158	ARG
1	B	159	ASN
1	B	217	GLN
1	B	234	ARG
1	B	266	LEU
1	B	272	ASP
1	B	285	SER

Continued on next page...

Continued from previous page...

Mol	Chain	Res	Type
1	B	294	ASN
1	B	305	VAL
1	B	323	VAL
1	B	332	THR
1	B	364	LEU
1	B	365	ASN
1	B	372	SER

Some sidechains can be flipped to improve hydrogen bonding and reduce clashes. All (26) such sidechains are listed below:

Mol	Chain	Res	Type
1	A	159	ASN
1	A	164	GLN
1	A	180	ASN
1	A	208	GLN
1	A	267	GLN
1	A	288	ASN
1	A	297	ASN
1	A	304	GLN
1	A	365	ASN
1	A	374	ASN
1	B	21	ASN
1	B	159	ASN
1	B	164	GLN
1	B	174	GLN
1	B	189	ASN
1	B	194	GLN
1	B	201	GLN
1	B	208	GLN
1	B	215	HIS
1	B	288	ASN
1	B	294	ASN
1	B	304	GLN
1	B	330	ASN
1	B	353	GLN
1	B	365	ASN
1	B	366	HIS

5.3.3 RNA ⓘ

There are no RNA chains in this entry.

5.4 Non-standard residues in protein, DNA, RNA chains ⓘ

There are no non-standard protein/DNA/RNA residues in this entry.

5.5 Carbohydrates ⓘ

There are no carbohydrates in this entry.

5.6 Ligand geometry ⓘ

22 ligands are modelled in this entry.

In the following table, the Counts columns list the number of bonds (or angles) for which Mogul statistics could be retrieved, the number of bonds (or angles) that are observed in the model and the number of bonds (or angles) that are defined in the chemical component dictionary. The Link column lists molecule types, if any, to which the group is linked. The Z score for a bond length (or angle) is the number of standard deviations the observed value is removed from the expected value. A bond length (or angle) with $|Z| > 2$ is considered an outlier worth inspection. RMSZ is the root-mean-square of all Z scores of the bond lengths (or angles).

Mol	Type	Chain	Res	Link	Bond lengths			Bond angles		
					Counts	RMSZ	$\# Z > 2$	Counts	RMSZ	$\# Z > 2$
2	C8E	A	391	-	12,12,20	0.95	0	11,11,19	2.31	5 (45%)
2	C8E	A	392	-	11,12,20	0.57	0	10,11,19	1.79	2 (20%)
2	C8E	A	393	-	14,14,20	4.67	1 (7%)	12,13,19	1.97	4 (33%)
2	C8E	A	394	-	11,12,20	0.55	0	10,11,19	1.76	2 (20%)
2	C8E	A	395	-	16,16,20	5.07	1 (6%)	15,15,19	2.32	6 (40%)
2	C8E	A	396	-	5,5,20	10.77	1 (20%)	4,4,19	1.18	0
2	C8E	A	397	-	8,8,20	0.72	0	7,7,19	1.78	2 (28%)
2	C8E	A	398	-	11,11,20	0.68	0	10,10,19	1.79	2 (20%)
2	C8E	A	399	-	11,11,20	0.73	0	10,10,19	1.85	2 (20%)
2	C8E	A	400	-	11,11,20	0.69	0	10,10,19	1.81	2 (20%)
2	C8E	A	401	-	11,11,20	0.71	0	10,10,19	1.90	2 (20%)
2	C8E	A	402	-	13,13,20	1.14	1 (7%)	11,12,19	1.77	2 (18%)
2	C8E	B	391	-	19,19,20	4.85	1 (5%)	18,18,19	2.32	7 (38%)
2	C8E	B	392	-	12,12,20	1.03	0	11,11,19	2.26	5 (45%)
2	C8E	B	393	-	7,7,20	7.01	1 (14%)	6,6,19	2.11	3 (50%)
2	C8E	B	394	-	11,11,20	0.67	0	10,10,19	1.78	2 (20%)
2	C8E	B	395	-	14,14,20	0.90	0	13,13,19	2.28	4 (30%)
2	C8E	B	396	-	14,14,20	0.86	0	13,13,19	2.33	4 (30%)

Mol	Type	Chain	Res	Link	Bond lengths			Bond angles		
					Counts	RMSZ	# Z > 2	Counts	RMSZ	# Z > 2
2	C8E	B	397	-	8,8,20	0.68	0	7,7,19	1.68	2 (28%)
2	C8E	B	398	-	6,6,20	9.25	1 (16%)	5,5,19	2.83	1 (20%)
2	C8E	B	399	-	11,12,20	0.48	0	10,11,19	1.78	2 (20%)
2	C8E	B	400	-	11,12,20	0.66	0	10,11,19	1.65	2 (20%)

In the following table, the Chirals column lists the number of chiral outliers, the number of chiral centers analysed, the number of these observed in the model and the number defined in the chemical component dictionary. Similar counts are reported in the Torsion and Rings columns. '-' means no outliers of that kind were identified.

Mol	Type	Chain	Res	Link	Chirals	Torsions	Rings
2	C8E	A	391	-	-	0/10/10/18	0/0/0/0
2	C8E	A	392	-	-	0/10/10/18	0/0/0/0
2	C8E	A	393	-	-	0/12/12/18	0/0/0/0
2	C8E	A	394	-	-	0/10/10/18	0/0/0/0
2	C8E	A	395	-	-	0/14/14/18	0/0/0/0
2	C8E	A	396	-	-	0/3/3/18	0/0/0/0
2	C8E	A	397	-	-	0/6/6/18	0/0/0/0
2	C8E	A	398	-	-	0/9/9/18	0/0/0/0
2	C8E	A	399	-	-	0/9/9/18	0/0/0/0
2	C8E	A	400	-	-	0/9/9/18	0/0/0/0
2	C8E	A	401	-	-	0/9/9/18	0/0/0/0
2	C8E	A	402	-	-	0/11/11/18	0/0/0/0
2	C8E	B	391	-	-	0/17/17/18	0/0/0/0
2	C8E	B	392	-	-	0/10/10/18	0/0/0/0
2	C8E	B	393	-	-	0/5/5/18	0/0/0/0
2	C8E	B	394	-	-	0/9/9/18	0/0/0/0
2	C8E	B	395	-	-	0/12/12/18	0/0/0/0
2	C8E	B	396	-	-	0/12/12/18	0/0/0/0
2	C8E	B	397	-	-	0/6/6/18	0/0/0/0
2	C8E	B	398	-	-	0/4/4/18	0/0/0/0
2	C8E	B	399	-	-	0/10/10/18	0/0/0/0
2	C8E	B	400	-	-	0/10/10/18	0/0/0/0

All (7) bond length outliers are listed below:

Mol	Chain	Res	Type	Atoms	Z	Observed(Å)	Ideal(Å)
2	A	396	C8E	C6-C5	-24.03	1.45	1.55
2	B	398	C8E	C7-C6	-22.56	1.46	1.55
2	B	391	C8E	C2-C3	-20.70	1.46	1.55
2	A	395	C8E	C2-C3	-19.88	1.47	1.55

Continued on next page...

Continued from previous page...

Mol	Chain	Res	Type	Atoms	Z	Observed(Å)	Ideal(Å)
2	B	393	C8E	C2-C3	-18.40	1.47	1.55
2	A	393	C8E	C7-C8	-17.22	1.48	1.55
2	A	402	C8E	C14-C13	3.46	1.56	1.55

All (63) bond angle outliers are listed below:

Mol	Chain	Res	Type	Atoms	Z	Observed(°)	Ideal(°)
2	B	398	C8E	C7-C6-C5	-6.12	100.72	114.46
2	B	391	C8E	O15-C14-C13	5.02	133.26	110.47
2	B	394	C8E	O9-C8-C7	4.78	128.84	109.88
2	A	391	C8E	O15-C14-C13	4.75	132.03	110.47
2	B	396	C8E	O9-C8-C7	4.75	128.72	109.88
2	B	396	C8E	O15-C14-C13	4.74	130.95	114.71
2	A	401	C8E	O9-C8-C7	4.66	128.35	109.88
2	B	395	C8E	O15-C14-C13	4.62	130.54	114.71
2	A	395	C8E	O15-C14-C13	4.53	131.01	110.47
2	B	392	C8E	O15-C14-C13	4.51	130.93	110.47
2	A	399	C8E	O9-C8-C7	4.49	127.69	109.88
2	A	402	C8E	O9-C8-C7	4.49	127.67	109.88
2	B	399	C8E	O9-C8-C7	4.41	127.35	109.88
2	B	395	C8E	O9-C8-C7	4.40	127.31	109.88
2	A	392	C8E	O9-C8-C7	4.37	127.22	109.88
2	A	400	C8E	O9-C8-C7	4.33	127.03	109.88
2	A	395	C8E	O9-C8-C7	4.32	127.01	109.88
2	A	394	C8E	O9-C8-C7	4.29	126.89	109.88
2	A	398	C8E	O9-C8-C7	4.28	126.85	109.88
2	B	391	C8E	O9-C8-C7	4.17	126.42	109.88
2	A	393	C8E	O15-C14-C13	4.15	129.28	110.47
2	B	400	C8E	O9-C8-C7	4.10	126.12	109.88
2	B	395	C8E	O12-C13-C14	3.67	126.03	109.44
2	B	392	C8E	O12-C13-C14	3.46	126.15	110.47
2	A	397	C8E	O9-C8-C7	3.45	126.53	114.71
2	B	391	C8E	O12-C13-C14	3.45	126.13	110.47
2	A	395	C8E	O12-C13-C14	3.39	125.84	110.47
2	B	396	C8E	O12-C13-C14	3.35	124.62	109.44
2	B	391	C8E	C2-C3-C4	-3.23	107.20	114.46
2	A	391	C8E	O12-C13-C14	3.22	125.10	110.47
2	A	393	C8E	O12-C13-C14	3.20	124.98	110.47
2	B	391	C8E	O18-C17-C16	3.19	124.95	110.47
2	B	393	C8E	O9-C8-C7	3.15	125.51	114.71
2	B	397	C8E	O9-C8-C7	3.05	125.14	114.71
2	A	391	C8E	O18-C17-C16	2.94	123.83	110.47

Continued on next page...

Continued from previous page...

Mol	Chain	Res	Type	Atoms	Z	Observed(°)	Ideal(°)
2	B	392	C8E	O18-C17-C16	2.91	123.66	110.47
2	A	395	C8E	C2-C3-C4	-2.90	107.94	114.46
2	A	395	C8E	C7-C6-C5	-2.87	99.07	114.61
2	B	396	C8E	C7-C6-C5	-2.79	99.52	114.61
2	A	398	C8E	C7-C6-C5	-2.78	99.57	114.61
2	B	393	C8E	C7-C6-C5	-2.77	99.61	114.61
2	B	391	C8E	C7-C6-C5	-2.73	99.85	114.61
2	A	400	C8E	C7-C6-C5	-2.73	99.86	114.61
2	A	391	C8E	O18-C19-C20	2.72	123.67	110.61
2	A	399	C8E	C7-C6-C5	-2.71	99.93	114.61
2	A	391	C8E	O9-C10-C11	-2.66	105.61	114.71
2	B	397	C8E	C7-C6-C5	-2.66	100.23	114.61
2	A	401	C8E	C7-C6-C5	-2.66	100.23	114.61
2	B	391	C8E	O18-C19-C20	2.65	123.34	110.61
2	A	402	C8E	C7-C6-C5	-2.64	100.31	114.61
2	A	397	C8E	C7-C6-C5	-2.63	100.38	114.61
2	B	399	C8E	C7-C6-C5	-2.63	100.39	114.61
2	B	392	C8E	O18-C19-C20	2.59	123.08	110.61
2	A	393	C8E	O18-C19-C20	2.57	122.95	110.61
2	A	394	C8E	C7-C6-C5	-2.55	100.81	114.61
2	A	392	C8E	C7-C6-C5	-2.47	101.25	114.61
2	A	393	C8E	O18-C17-C16	2.47	121.66	110.47
2	B	392	C8E	O9-C10-C11	-2.46	106.27	114.71
2	B	393	C8E	C2-C3-C4	-2.44	108.98	114.46
2	B	394	C8E	C7-C6-C5	-2.40	101.63	114.61
2	B	395	C8E	C7-C6-C5	-2.39	101.68	114.61
2	B	400	C8E	C7-C6-C5	-2.36	101.84	114.61
2	A	395	C8E	O18-C17-C16	2.31	122.61	114.71

There are no chirality outliers.

There are no torsion outliers.

There are no ring outliers.

5.7 Other polymers ⓘ

There are no such residues in this entry.

5.8 Polymer linkage issues

There are no chain breaks in this entry.

6 Fit of model and data ⓘ

6.1 Protein, DNA and RNA chains ⓘ

In the following table, the column labelled ‘#RSRZ > 2’ contains the number (and percentage) of RSRZ outliers, followed by percent RSRZ outliers for the chain as percentile scores relative to all X-ray entries and entries of similar resolution. The OWAB column contains the minimum, median, 95th percentile and maximum values of the occupancy-weighted average B-factor per residue. The column labelled ‘Q < 0.9’ lists the number of (and percentage) of residues with an average occupancy less than 0.9.

Mol	Chain	Analysed	<RSRZ>	#RSRZ>2	OWAB(Å ²)	Q<0.9
1	A	371/390 (95%)	0.01	11 (2%) 48 49	15, 29, 50, 69	0
1	B	368/390 (94%)	-0.03	13 (3%) 42 42	15, 29, 53, 73	0
All	All	739/780 (94%)	-0.01	24 (3%) 45 46	15, 29, 51, 73	0

All (24) RSRZ outliers are listed below:

Mol	Chain	Res	Type	RSRZ
1	B	77	SER	9.6
1	B	82	LEU	6.3
1	A	82	LEU	5.7
1	A	77	SER	5.2
1	B	76	ASN	4.2
1	B	88	ALA	4.0
1	A	83	HIS	3.5
1	A	10	LYS	3.1
1	B	33	LEU	3.0
1	B	83	HIS	3.0
1	A	80	LEU	2.9
1	A	88	ALA	2.7
1	B	89	ALA	2.7
1	A	76	ASN	2.5
1	A	316	TRP	2.4
1	B	217	GLN	2.3
1	B	222	TRP	2.3
1	B	81	PRO	2.1
1	A	81	PRO	2.1
1	B	50	THR	2.1
1	B	216	LYS	2.1
1	B	79	LEU	2.0
1	A	359	ARG	2.0
1	A	127	LEU	2.0

6.2 Non-standard residues in protein, DNA, RNA chains ⓘ

There are no non-standard protein/DNA/RNA residues in this entry.

6.3 Carbohydrates ⓘ

There are no carbohydrates in this entry.

6.4 Ligands ⓘ

In the following table, the Atoms column lists the number of modelled atoms in the group and the number defined in the chemical component dictionary. LLDF column lists the quality of electron density of the group with respect to its neighbouring residues in protein, DNA or RNA chains. The B-factors column lists the minimum, median, 95th percentile and maximum values of B factors of atoms in the group. The column labelled 'Q< 0.9' lists the number of atoms with occupancy less than 0.9.

Mol	Type	Chain	Res	Atoms	RSR	LLDF	B-factors(Å ²)	Q<0.9
2	C8E	A	393	15/21	0.67	17.97	43,54,59,60	0
2	C8E	B	400	13/21	0.70	14.28	73,76,79,79	0
2	C8E	A	401	12/21	0.60	12.42	63,73,74,74	0
2	C8E	A	400	12/21	0.63	12.42	61,66,67,67	0
2	C8E	A	395	17/21	0.65	11.37	59,71,73,73	0
2	C8E	B	394	12/21	0.42	10.46	61,66,69,69	0
2	C8E	A	402	14/21	0.60	10.41	67,71,74,74	0
2	C8E	B	393	8/21	0.31	9.56	52,54,55,55	0
2	C8E	B	399	13/21	0.43	9.17	52,64,68,68	0
2	C8E	B	398	7/21	0.66	8.38	54,56,57,58	0
2	C8E	B	392	13/21	0.61	7.44	61,66,69,69	0
2	C8E	A	399	12/21	0.58	6.89	51,53,58,59	0
2	C8E	B	391	20/21	0.56	5.90	41,57,63,64	0
2	C8E	B	396	15/21	0.46	5.52	63,65,70,70	0
2	C8E	A	398	12/21	0.51	5.46	51,56,59,59	0
2	C8E	A	392	13/21	0.39	5.21	39,46,49,49	0
2	C8E	A	391	13/21	0.32	3.41	49,51,54,54	0
2	C8E	A	397	9/21	0.47	3.11	44,46,51,52	0
2	C8E	A	394	13/21	0.31	3.02	39,41,50,51	0
2	C8E	B	397	9/21	0.45	2.76	64,66,68,68	0
2	C8E	B	395	15/21	0.36	2.13	66,72,73,74	0
2	C8E	A	396	6/21	0.25	0.81	44,45,46,46	0

6.5 Other polymers ⓘ

There are no such residues in this entry.