



# Full wwPDB X-ray Structure Validation Report i

Feb 28, 2014 – 02:10 PM GMT

PDB ID : 2QWE  
Title : THE X-RAY STRUCTURE OF A COMPLEX OF 4-GUANIDINO-NEU5  
AC2ENAND A DRUG RESISTANT VARIANT R292K OF TERN N9 IN-  
FLUENZA VIRUS NEURAMINIDASE  
Authors : Varghese, J.N.  
Deposited on : 1998-04-07  
Resolution : 2.00 Å(reported)

This is a full wwPDB validation report for a publicly released PDB entry.  
We welcome your comments at [validation@mail.wwpdb.org](mailto:validation@mail.wwpdb.org)  
A user guide is available at <http://wwpdb.org/ValidationPDFNotes.html>

---

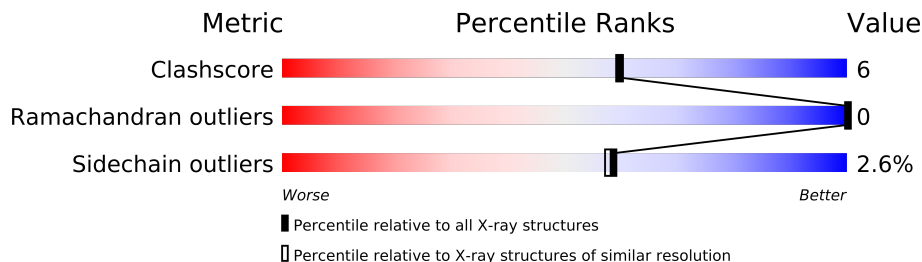
The following versions of software and data (see [references](#)) were used in the production of this report:

MolProbity : 4.02b-467  
Mogul : 1.15 2013  
Xtriage (Phenix) : **NOT EXECUTED**  
EDS : **NOT EXECUTED**  
Percentile statistics : 21963  
Ideal geometry (proteins) : Engh & Huber (2001)  
Ideal geometry (DNA, RNA) : Parkinson et. al. (1996)  
Validation Pipeline (wwPDB-VP) : stable22683

# 1 Overall quality at a glance

The reported resolution of this entry is 2.00 Å.


Percentile scores (ranging between 0-100) for global validation metrics of the entry are shown in the following graphic. The table shows the number of entries on which the scores are based.



Metric	Whole archive (#Entries)	Similar resolution (#Entries, resolution range(Å))
Clashscore	79885	6188 (2.00-2.00)
Ramachandran outliers	78287	6102 (2.00-2.00)
Sidechain outliers	78261	6100 (2.00-2.00)

The table below summarises the geometric issues observed across the polymeric chains and their fit to the electron density. The red, orange, yellow and green segments on the lower bar indicate the fraction of residues that contain outliers for  $\geq 3$ , 2, 1 and 0 types of geometric quality criteria. The upper red bar (where present) indicates the fraction of residues that have poor fit to the electron density.

Note EDS was not executed.

Mol	Chain	Length	Quality of chain
1	A	388	

## 2 Entry composition

There are 7 unique types of molecules in this entry. The entry contains 3611 atoms, of which 0 are hydrogen and 0 are deuterium.

In the tables below, the ZeroOcc column contains the number of atoms modelled with zero occupancy, the AltConf column contains the number of residues with at least one atom in alternate conformation and the Trace column contains the number of residues modelled with at most 2 atoms.

- Molecule 1 is a protein called NEURAMINIDASE.

Mol	Chain	Residues	Atoms					ZeroOcc	AltConf	Trace
1	A	388	Total	C	N	O	S	21	0	0
			3065	1914	536	592	23			

There is a discrepancy between the modelled and reference sequences:

Chain	Residue	Modelled	Actual	Comment	Reference
A	292	LYS	ARG	ENGINEERED	UNP P03472

- Molecule 2 is a polymer of unknown type called SUGAR (7-MER).

Mol	Chain	Residues	Atoms				ZeroOcc	AltConf
2	A	7	Total	C	N	O	0	0
			83	46	2	35		

There is a discrepancy between the modelled and reference sequences:

Chain	Residue	Modelled	Actual	Comment	Reference
A	292	LYS	ARG	ENGINEERED	UNP P03472

- Molecule 3 is a polymer of unknown type called SUGAR (2-MER).

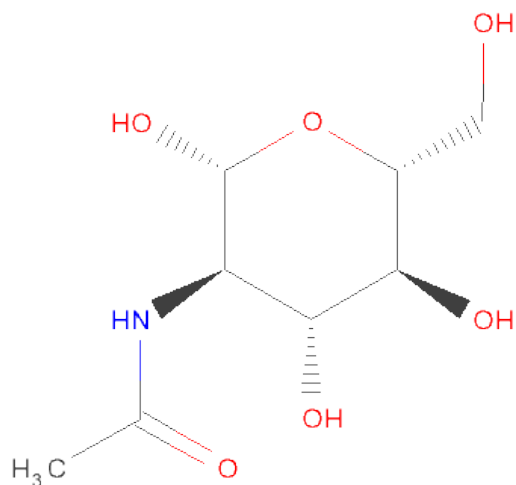
Mol	Chain	Residues	Atoms				ZeroOcc	AltConf
3	A	2	Total	C	N	O	0	0
			28	16	2	10		

There is a discrepancy between the modelled and reference sequences:

Chain	Residue	Modelled	Actual	Comment	Reference
A	292	LYS	ARG	ENGINEERED	UNP P03472

- Molecule 4 is SUGAR (N-ACETYL-D-GLUCOSAMINE) (three-letter code: NAG) (formula:

C<sub>8</sub>H<sub>15</sub>NO<sub>6</sub>).

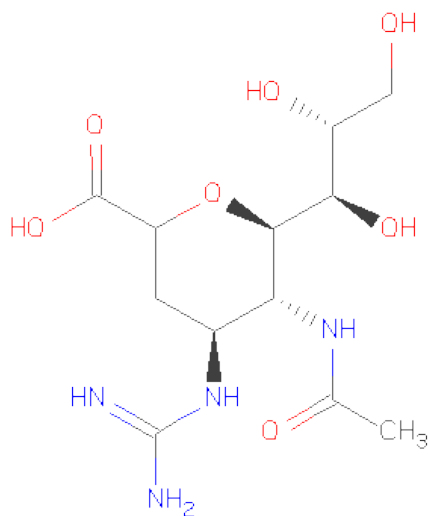


Mol	Chain	Residues	Atoms				ZeroOcc	AltConf
4	A	1	Total	C	N	O	0	0
			14	8	1	5		

- Molecule 5 is CALCIUM ION (three-letter code: CA) (formula: Ca).

Mol	Chain	Residues	Atoms		ZeroOcc	AltConf
5	A	2	Total	Ca	0	0
			2	2		

- Molecule 6 is 2,4-DEOXY-4-GUANIDINO-5-N-ACETYL-NEURAMINICACID (three-letter code: GNA) (formula: C<sub>12</sub>H<sub>22</sub>N<sub>4</sub>O<sub>7</sub>).



Mol	Chain	Residues	Atoms				ZeroOcc	AltConf
6	A	1	Total	C	N	O	0	0
			23	12	4	7		

- Molecule 7 is water.

Mol	Chain	Residues	Atoms		ZeroOcc	AltConf
7	A	396	Total	O	0	0
			396	396		

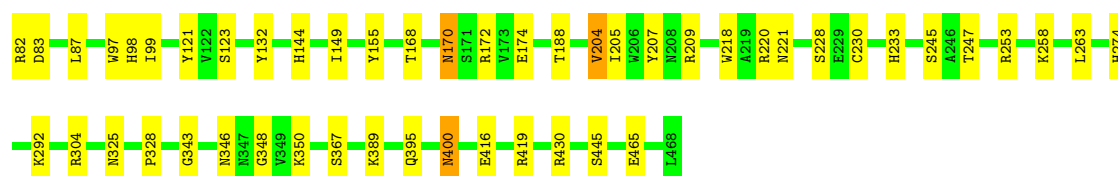
### 3 Residue-property plots

These plots are drawn for all protein, RNA and DNA chains in the entry. The first graphic for a chain summarises the proportions of errors displayed in the second graphic. The second graphic shows the sequence view annotated by issues in geometry and electron density. Residues are color-coded according to the number of geometric quality criteria for which they contain at least one outlier: green = 0, yellow = 1, orange = 2 and red = 3 or more. A red dot above a residue indicates a poor fit to the electron density ( $RSRZ > 2$ ). Stretches of 2 or more consecutive residues without any outlier are shown as a green connector. Residues present in the sample, but not in the model, are shown in grey.

Note EDS was not executed.

#### • Molecule 1: NEURAMINIDASE

Chain A: 



## 4 Data and refinement statistics

Xtriage (Phenix) and EDS were not executed - this section will therefore be incomplete.

Property	Value	Source
Space group	I 4 3 2	Depositor
Cell constants a, b, c, $\alpha$ , $\beta$ , $\gamma$	180.85Å 180.85Å 180.85Å 90.00° 90.00° 90.00°	Depositor
Resolution (Å)	6.00 – 2.00	Depositor
% Data completeness (in resolution range)	73.0 (6.00-2.00)	Depositor
$R_{merge}$	0.10	Depositor
$R_{sym}$	0.08	Depositor
Refinement program	X-PLOR 3.0	Depositor
R, $R_{free}$	0.149 , (Not available)	Depositor
Estimated twinning fraction	No twinning to report.	Xtriage
Total number of atoms	3611	wwPDB-VP
Average B, all atoms (Å <sup>2</sup> )	18.0	wwPDB-VP

## 5 Model quality

### 5.1 Standard geometry

Bond lengths and bond angles in the following residue types are not validated in this section: CA, BMA, GNA, NAG, MAN

The Z score for a bond length (or angle) is the number of standard deviations the observed value is removed from the expected value. A bond length (or angle) with  $|Z| > 5$  is considered an outlier worth inspection. RMSZ is the root-mean-square of all Z scores of the bond lengths (or angles).

Mol	Chain	Bond lengths		Bond angles	
		RMSZ	$\# Z  > 5$	RMSZ	$\# Z  > 5$
1	A	0.61	0/3148	0.82	0/4287

Chiral center outliers are detected by calculating the chiral volume of a chiral center and verifying if the center is modelled as a planar moiety or with the opposite hand. A planarity outlier is detected by checking planarity of atoms in a peptide group, atoms in a mainchain group or atoms of a sidechain that are expected to be planar.

Mol	Chain	#Chirality outliers	#Planarity outliers
1	A	0	1

There are no bond length outliers.

There are no bond angle outliers.

There are no chirality outliers.

All (1) planarity outliers are listed below:

Mol	Chain	Res	Type	Group
1	A	155	TYR	Sidechain

### 5.2 Close contacts

In the following table, the Non-H and H(model) columns list the number of non-hydrogen atoms and hydrogen atoms in the chain respectively. The H(added) column lists the number of hydrogens added by MolProbity. The Clashes column lists the number of clashes within the asymmetric unit, and the number in parentheses is this value normalized per 1000 atoms of the molecule in the chain. The Symm-Clashes column gives symmetry related clashes, in the same way as for the Clashes column.

Mol	Chain	Non-H	H(model)	H(added)	Clashes	Symm-Clashes
1	A	3065	0	2893	37	1

*Continued on next page...*



*Continued from previous page...*

Mol	Chain	Non-H	H(model)	H(added)	Clashes	Symm-Clashes
2	A	83	0	70	0	0
3	A	28	0	23	0	0
4	A	14	0	13	0	0
5	A	2	0	0	0	0
6	A	23	0	18	0	0
7	A	396	0	0	7	6
All	All	3611	0	3017	37	6

Clashscore is defined as the number of clashes calculated for the entry per 1000 atoms (including hydrogens) of the entry. The overall clashscore for this entry is 6.

All (37) close contacts within the same asymmetric unit are listed below.

Atom-1	Atom-2	Distance(Å)	Clash(Å)
1:A:172:ARG:HD3	1:A:209:ARG:NH2	1.89	0.87
1:A:168:THR:H	1:A:170:ASN:HD21	1.21	0.87
1:A:87:LEU:H	1:A:233:HIS:HD2	1.26	0.82
1:A:98:HIS:HE1	1:A:419:ARG:HH11	1.29	0.78
1:A:98:HIS:CE1	1:A:419:ARG:HH11	2.09	0.71
1:A:168:THR:H	1:A:170:ASN:ND2	1.90	0.68
1:A:97:TRP:H	1:A:395:GLN:HE22	1.45	0.64
1:A:247:THR:HG22	1:A:346:ASN:HB3	1.81	0.62
1:A:170:ASN:HB3	7:A:1309(P):HOH:O	2.00	0.60
1:A:172:ARG:CD	1:A:209:ARG:NH2	2.66	0.57
1:A:87:LEU:H	1:A:233:HIS:CD2	2.16	0.55
1:A:245:SER:O	1:A:274:HIS:HE1	1.91	0.53
1:A:445:SER:HB2	7:A:1371(S):HOH:O	2.09	0.52
1:A:228:SER:HB3	1:A:350:LYS:HE2	1.92	0.51
1:A:82:ARG:N	7:A:1175(G):HOH:O	2.44	0.50
1:A:367:SER:HB2	1:A:400:ASN:HD21	1.78	0.48
1:A:121:TYR:CG	1:A:228:SER:HA	2.49	0.48
1:A:188:THR:HG22	1:A:207:TYR:CZ	2.50	0.47
1:A:204:VAL:HG13	7:A:1043(W):HOH:O	2.15	0.47
1:A:172:ARG:HD3	1:A:209:ARG:CZ	2.43	0.47
1:A:325:ASN:O	1:A:348:GLY:HA2	2.15	0.46
1:A:98:HIS:HD2	1:A:99:ILE:O	1.98	0.46
1:A:465:GLU:HG2	7:A:1384(S):HOH:O	2.16	0.45
1:A:172:ARG:HD2	1:A:174:GLU:OE2	2.17	0.45
1:A:98:HIS:CE1	1:A:419:ARG:NH1	2.81	0.45
1:A:188:THR:CG2	1:A:207:TYR:CZ	3.01	0.43
1:A:258:LYS:HB2	1:A:263:LEU:HD11	2.00	0.43
1:A:304:ARG:HD3	7:A:1138(F):HOH:O	2.19	0.43
1:A:205:ILE:N	1:A:205:ILE:HD12	2.34	0.43

*Continued on next page...*

Continued from previous page...

Atom-1	Atom-2	Distance(Å)	Clash(Å)
1:A:149:ILE:HD12	1:A:430:ARG:HB3	2.01	0.42
1:A:174:GLU:OE1	1:A:209:ARG:NH2	2.52	0.42
1:A:174:GLU:CD	1:A:209:ARG:HH22	2.23	0.42
1:A:218:TRP:CZ2	1:A:253:ARG:HD2	2.55	0.42
1:A:346:ASN:N	1:A:346:ASN:ND2	2.64	0.42
1:A:328:PRO:HG3	1:A:343:GLY:HA3	2.03	0.41
1:A:123:SER:HB3	1:A:132:TYR:CE1	2.55	0.41
1:A:144:HIS:HD2	7:A:1036(W):HOH:O	2.03	0.40

All (6) symmetry-related close contacts are listed below. The label for Atom-2 includes the symmetry operator and encoded unit-cell translations to be applied.

Atom-1	Atom-2	Distance(Å)	Clash(Å)
7:A:1313(Q):HOH:O	7:A:1314(Q):HOH:O[48_555]	0.56	1.64
7:A:1350(R):HOH:O	7:A:1353(R):HOH:O[31_555]	0.63	1.57
7:A:1324(Q):HOH:O	7:A:1324(Q):HOH:O[48_555]	0.76	1.44
7:A:1270(N):HOH:O	7:A:1270(N):HOH:O[48_555]	0.80	1.40
7:A:1363(R):HOH:O	7:A:1366(R):HOH:O[48_555]	1.00	1.20
1:A:389:LYS:NZ	7:A:1363(R):HOH:O[48_555]	2.09	0.11

## 5.3 Torsion angles

### 5.3.1 Protein backbone ⓘ

In the following table, the Percentiles column shows the percent Ramachandran outliers of the chain as a percentile score with respect to all X-ray entries followed by that with respect to entries of similar resolution. The Analysed column shows the number of residues for which the backbone conformation was analysed, and the total number of residues.

Mol	Chain	Analysed	Favoured	Allowed	Outliers	Percentiles	
1	A	386/388 (100%)	367 (95%)	19 (5%)	0	100	100

There are no Ramachandran outliers to report.

### 5.3.2 Protein sidechains ⓘ

In the following table, the Percentiles column shows the percent sidechain outliers of the chain as a percentile score with respect to all X-ray entries followed by that with respect to entries of similar resolution. The Analysed column shows the number of residues for which the sidechain conformation was analysed, and the total number of residues.

Mol	Chain	Analysed	Rotameric	Outliers	Percentiles	
1	A	341/341 (100%)	332 (97%)	9 (3%)	59	58

All (9) residues with a non-rotameric sidechain are listed below:

Mol	Chain	Res	Type
1	A	83	ASP
1	A	170	ASN
1	A	204	VAL
1	A	220	ARG
1	A	221	ASN
1	A	230	CYS
1	A	292	LYS
1	A	400	ASN
1	A	416	GLU

Some sidechains can be flipped to improve hydrogen bonding and reduce clashes. All (11) such sidechains are listed below:

Mol	Chain	Res	Type
1	A	95	ASN
1	A	98	HIS
1	A	144	HIS
1	A	170	ASN
1	A	221	ASN
1	A	233	HIS
1	A	274	HIS
1	A	346	ASN
1	A	392	GLN
1	A	395	GLN
1	A	400	ASN

### 5.3.3 RNA ⓘ

There are no RNA chains in this entry.

## 5.4 Non-standard residues in protein, DNA, RNA chains ⓘ

There are no non-standard protein/DNA/RNA residues in this entry.

## 5.5 Carbohydrates ⓘ

9 carbohydrates are modelled in this entry.

In the following table, the Counts columns list the number of bonds (or angles) for which Mogul statistics could be retrieved, the number of bonds (or angles) that are observed in the model and the number of bonds (or angles) that are defined in the chemical component dictionary. The Link column lists molecule types, if any, to which the group is linked. The Z score for a bond length (or angle) is the number of standard deviations the observed value is removed from the expected value. A bond length (or angle) with  $|Z| > 2$  is considered an outlier worth inspection. RMSZ is the root-mean-square of all Z scores of the bond lengths (or angles).

Mol	Type	Chain	Res	Link	Bond lengths			Bond angles		
					Counts	RMSZ	$\# Z  > 2$	Counts	RMSZ	$\# Z  > 2$
2	NAG	A	469(A)	1,2	12,14,15	0.99	1 (8%)	15,19,21	1.10	1 (6%)
2	NAG	A	470(B)	2	12,14,15	1.42	2 (16%)	15,19,21	1.67	4 (26%)
2	BMA	A	471(C)	2	10,11,12	0.89	0	11,15,17	1.25	2 (18%)
2	MAN	A	472(D)	2	10,11,12	1.50	2 (20%)	11,15,17	1.42	1 (9%)
2	MAN	A	473(E)	2	10,11,12	1.17	1 (10%)	11,15,17	1.11	1 (9%)
2	MAN	A	474(F)	2	10,11,12	1.34	1 (10%)	11,15,17	1.05	1 (9%)
2	MAN	A	475(G)	2	10,11,12	1.21	1 (10%)	11,15,17	1.17	1 (9%)
3	NAG	A	476(A)	1,3	12,14,15	0.82	0	15,19,21	1.83	5 (33%)
3	NAG	A	477(B)	3	12,14,15	1.40	2 (16%)	15,19,21	3.45	6 (40%)

In the following table, the Chirals column lists the number of chiral outliers, the number of chiral centers analysed, the number of these observed in the model and the number defined in the chemical component dictionary. Similar counts are reported in the Torsion and Rings columns. '-' means no outliers of that kind were identified.

Mol	Type	Chain	Res	Link	Chirals	Torsions	Rings
2	NAG	A	469(A)	1,2	-	0/6/23/26	0/1/1/1
2	NAG	A	470(B)	2	-	0/6/23/26	0/1/1/1
2	BMA	A	471(C)	2	-	0/2/19/22	0/1/1/1
2	MAN	A	472(D)	2	-	0/2/19/22	0/1/1/1
2	MAN	A	473(E)	2	-	0/2/19/22	0/1/1/1
2	MAN	A	474(F)	2	-	0/2/19/22	0/1/1/1
2	MAN	A	475(G)	2	-	0/2/19/22	0/1/1/1
3	NAG	A	476(A)	1,3	-	0/6/23/26	0/1/1/1
3	NAG	A	477(B)	3	-	0/6/23/26	0/1/1/1

All (10) bond length outliers are listed below:

Mol	Chain	Res	Type	Atoms	Z	Observed(Å)	Ideal(Å)
3	A	477(B)	NAG	C4-C3	3.68	1.62	1.52
2	A	470(B)	NAG	O5-C5	-3.39	1.39	1.45
2	A	472(D)	MAN	C4-C5	-3.32	1.45	1.53
2	A	474(F)	MAN	C4-C5	3.01	1.59	1.53
2	A	472(D)	MAN	C3-C2	2.70	1.58	1.52
2	A	475(G)	MAN	O5-C5	-2.59	1.40	1.45
3	A	477(B)	NAG	C4-C5	2.50	1.58	1.53
2	A	473(E)	MAN	O5-C5	-2.47	1.40	1.45
2	A	470(B)	NAG	C3-C2	-2.21	1.48	1.52
2	A	469(A)	NAG	C4-C5	2.02	1.57	1.53

All (22) bond angle outliers are listed below:

Mol	Chain	Res	Type	Atoms	Z	Observed(°)	Ideal(°)
3	A	477(B)	NAG	C2-N2-C7	8.94	138.09	123.09
3	A	477(B)	NAG	C3-C2-N2	5.96	120.83	111.76
3	A	477(B)	NAG	C4-C3-C2	-4.24	100.94	111.32
2	A	470(B)	NAG	C3-C2-N2	-3.88	105.85	111.76
3	A	477(B)	NAG	C8-C7-N2	-3.74	108.79	116.11
3	A	477(B)	NAG	O3-C3-C4	3.58	118.37	110.35
3	A	476(A)	NAG	C3-C2-N2	-3.18	106.92	111.76
3	A	476(A)	NAG	C6-C5-C4	-3.08	105.56	113.00
3	A	476(A)	NAG	C3-C4-C5	2.97	115.51	110.20
2	A	472(D)	MAN	O6-C6-C5	-2.94	101.25	111.36
3	A	477(B)	NAG	O7-C7-C8	2.82	127.55	122.04
3	A	476(A)	NAG	O6-C6-C5	-2.73	101.97	111.36
2	A	469(A)	NAG	O5-C5-C4	-2.58	107.38	110.65
2	A	470(B)	NAG	O7-C7-C8	-2.24	117.67	122.04
2	A	475(G)	MAN	O4-C4-C3	-2.23	105.34	110.35
2	A	471(C)	BMA	O5-C5-C6	2.22	109.31	106.98
2	A	470(B)	NAG	C4-C3-C2	-2.22	105.89	111.32
2	A	470(B)	NAG	O3-C3-C4	2.15	115.17	110.35
2	A	473(E)	MAN	C4-C3-C2	-2.13	107.64	110.50
2	A	474(F)	MAN	O4-C4-C3	2.12	115.11	110.35
2	A	471(C)	BMA	O3-C3-C2	-2.07	106.15	109.94
3	A	476(A)	NAG	O4-C4-C5	-2.03	103.93	109.28

There are no chirality outliers.

There are no torsion outliers.

There are no ring outliers.

## 5.6 Ligand geometry

Of 4 ligands modelled in this entry, 2 are monoatomic - leaving 2 for Mogul analysis.

In the following table, the Counts columns list the number of bonds (or angles) for which Mogul statistics could be retrieved, the number of bonds (or angles) that are observed in the model and the number of bonds (or angles) that are defined in the chemical component dictionary. The Link column lists molecule types, if any, to which the group is linked. The Z score for a bond length (or angle) is the number of standard deviations the observed value is removed from the expected value. A bond length (or angle) with  $|Z| > 2$  is considered an outlier worth inspection. RMSZ is the root-mean-square of all Z scores of the bond lengths (or angles).

Mol	Type	Chain	Res	Link	Bond lengths			Bond angles		
					Counts	RMSZ	# Z  > 2	Counts	RMSZ	# Z  > 2
4	NAG	A	478(A)	1	12,14,15	1.55	2 (16%)	15,19,21	1.98	4 (26%)
6	GNA	A	800	-	23,23,23	2.48	3 (13%)	32,32,32	2.45	7 (21%)

In the following table, the Chirals column lists the number of chiral outliers, the number of chiral centers analysed, the number of these observed in the model and the number defined in the chemical component dictionary. Similar counts are reported in the Torsion and Rings columns. '-' means no outliers of that kind were identified.

Mol	Type	Chain	Res	Link	Chirals	Torsions	Rings
4	NAG	A	478(A)	1	-	0/6/23/26	0/1/1/1
6	GNA	A	800	-	1/1/9/11	0/22/38/38	0/1/1/1

All (5) bond length outliers are listed below:

Mol	Chain	Res	Type	Atoms	Z	Observed(Å)	Ideal(Å)
6	A	800	GNA	C2-C1	-8.45	1.40	1.51
6	A	800	GNA	C3-C2	-6.57	1.40	1.52
4	A	478(A)	NAG	O5-C5	-3.43	1.39	1.45
4	A	478(A)	NAG	C8-C7	3.36	1.57	1.50
6	A	800	GNA	O8-C8	-2.92	1.36	1.43

All (11) bond angle outliers are listed below:

Mol	Chain	Res	Type	Atoms	Z	Observed(°)	Ideal(°)
6	A	800	GNA	C3-C2-C1	7.24	121.68	111.88
6	A	800	GNA	O6-C2-C1	5.95	119.93	107.60
6	A	800	GNA	O6-C2-C3	5.92	118.38	110.57
6	A	800	GNA	C2-C3-C4	4.92	123.51	108.95
4	A	478(A)	NAG	C2-N2-C7	-4.42	115.67	123.09
4	A	478(A)	NAG	C3-C2-N2	-3.03	107.14	111.76

*Continued on next page...*

*Continued from previous page...*

Mol	Chain	Res	Type	Atoms	Z	Observed(°)	Ideal(°)
4	A	478(A)	NAG	C3-C4-C5	-2.60	105.56	110.20
4	A	478(A)	NAG	O5-C5-C4	-2.39	107.62	110.65
6	A	800	GNA	O1B-C1-C2	2.18	122.26	114.12
6	A	800	GNA	C6-O6-C2	2.18	118.59	112.46
6	A	800	GNA	C3-C4-C5	-2.17	107.59	110.81

All (1) chirality outliers are listed below:

Mol	Chain	Res	Type	Atom
6	A	800	GNA	C2

There are no torsion outliers.

There are no ring outliers.

## 5.7 Other polymers ⓘ

There are no such residues in this entry.

## 5.8 Polymer linkage issues

There are no chain breaks in this entry.

## 6 Fit of model and data ⓘ

### 6.1 Protein, DNA and RNA chains ⓘ

EDS was not executed - this section will therefore be empty.

### 6.2 Non-standard residues in protein, DNA, RNA chains ⓘ

EDS was not executed - this section will therefore be empty.

### 6.3 Carbohydrates ⓘ

EDS was not executed - this section will therefore be empty.

### 6.4 Ligands ⓘ

EDS was not executed - this section will therefore be empty.

### 6.5 Other polymers ⓘ

EDS was not executed - this section will therefore be empty.