



Full wwPDB X-ray Structure Validation Report

Feb 28, 2014 – 02:09 PM GMT

PDB ID : 2QWI
Title : THE X-RAY STRUCTURE OF A COMPLEX OF N-ACETYL-4-GUANIDINO-6-METHYL(PROPYL)CARBOXAMIDE-4,5-DIHYDRO-2H-PYRAN-2-CARBOXYLICACID AND WILDTYPE TERN N9 INFLUENZA VIRUS NEURAMINIDASE
Authors : Varghese, J.N.
Deposited on : 1998-04-07
Resolution : 2.00 Å(reported)

This is a full wwPDB validation report for a publicly released PDB entry.
We welcome your comments at validation@mail.wwpdb.org
A user guide is available at <http://wwpdb.org/ValidationPDFNotes.html>

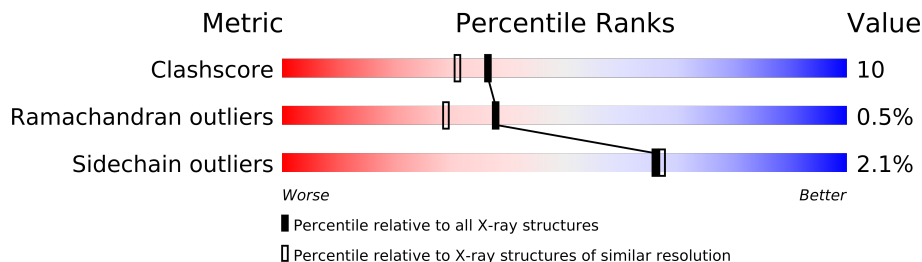
The following versions of software and data (see [references](#)) were used in the production of this report:

MolProbity : 4.02b-467
Mogul : 1.15 2013
Xtriage (Phenix) : **NOT EXECUTED**
EDS : **NOT EXECUTED**
Percentile statistics : 21963
Ideal geometry (proteins) : Engh & Huber (2001)
Ideal geometry (DNA, RNA) : Parkinson et. al. (1996)
Validation Pipeline (wwPDB-VP) : stable22683

1 Overall quality at a glance

The reported resolution of this entry is 2.00 Å.

Percentile scores (ranging between 0-100) for global validation metrics of the entry are shown in the following graphic. The table shows the number of entries on which the scores are based.



Metric	Whole archive (#Entries)	Similar resolution (#Entries, resolution range(Å))
Clashscore	79885	6188 (2.00-2.00)
Ramachandran outliers	78287	6102 (2.00-2.00)
Sidechain outliers	78261	6100 (2.00-2.00)

The table below summarises the geometric issues observed across the polymeric chains and their fit to the electron density. The red, orange, yellow and green segments on the lower bar indicate the fraction of residues that contain outliers for ≥ 3 , 2, 1 and 0 types of geometric quality criteria. The upper red bar (where present) indicates the fraction of residues that have poor fit to the electron density.

Note EDS was not executed.

Mol	Chain	Length	Quality of chain
1	A	388	

2 Entry composition i

There are 7 unique types of molecules in this entry. The entry contains 3399 atoms, of which 0 are hydrogen and 0 are deuterium.

In the tables below, the ZeroOcc column contains the number of atoms modelled with zero occupancy, the AltConf column contains the number of residues with at least one atom in alternate conformation and the Trace column contains the number of residues modelled with at most 2 atoms.

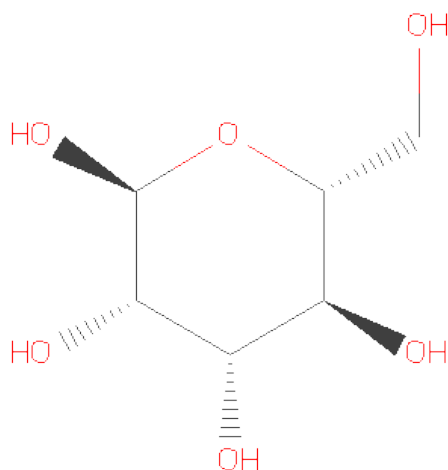
- Molecule 1 is a protein called NEURAMINIDASE.

Mol	Chain	Residues	Atoms					ZeroOcc	AltConf	Trace
			Total	C	N	O	S			
1	A	388	3067	1914	538	592	23	0	0	0

- Molecule 2 is a polymer of unknown type called SUGAR (6-MER).

Mol	Chain	Residues	Atoms				ZeroOcc	AltConf
			Total	C	N	O		
2	A	6	72	40	2	30	0	0

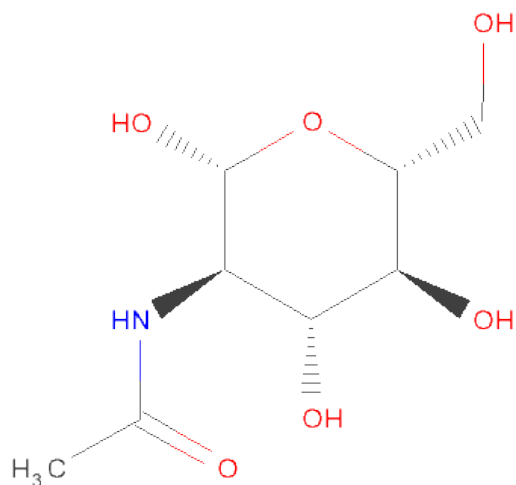
- Molecule 3 is SUGAR (ALPHA-D-MANNOSE) (three-letter code: MAN) (formula: C₆H₁₂O₆).



Mol	Chain	Residues	Atoms			ZeroOcc	AltConf
			Total	C	O		
3	A	1	11	6	5	0	0

- Molecule 4 is SUGAR (N-ACETYL-D-GLUCOSAMINE) (three-letter code: NAG) (formula:

C₈H₁₅NO₆).

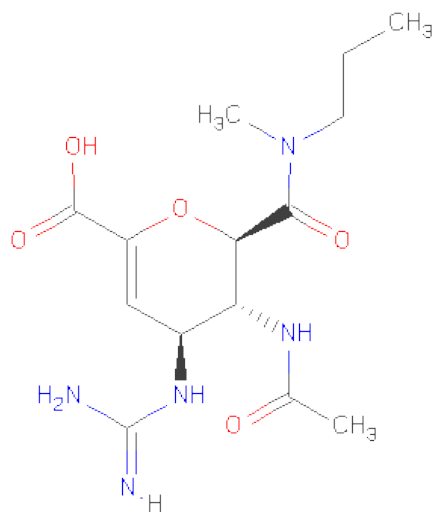


Mol	Chain	Residues	Atoms				ZeroOcc	AltConf
4	A	1	Total	C	N	O	0	0
			14	8	1	5		
4	A	1	Total	C	N	O	0	0
			14	8	1	5		

- Molecule 5 is CALCIUM ION (three-letter code: CA) (formula: Ca).

Mol	Chain	Residues	Atoms		ZeroOcc	AltConf
5	A	1	Total	Ca	0	0
			1	1		

- Molecule 6 is 4-ACETYL-4-GUANIDINO-6-METHYL(PROPYL)CARBOXAMIDE-4,5-DIHYDRO-2H-PYRAN-2-CARBOXYLICACID (three-letter code: G20) (formula: C₁₄H₂₃N₅O₅).



Mol	Chain	Residues	Atoms				ZeroOcc	AltConf
			Total	C	N	O		
6	A	1	24	14	5	5	0	0

- Molecule 7 is water.

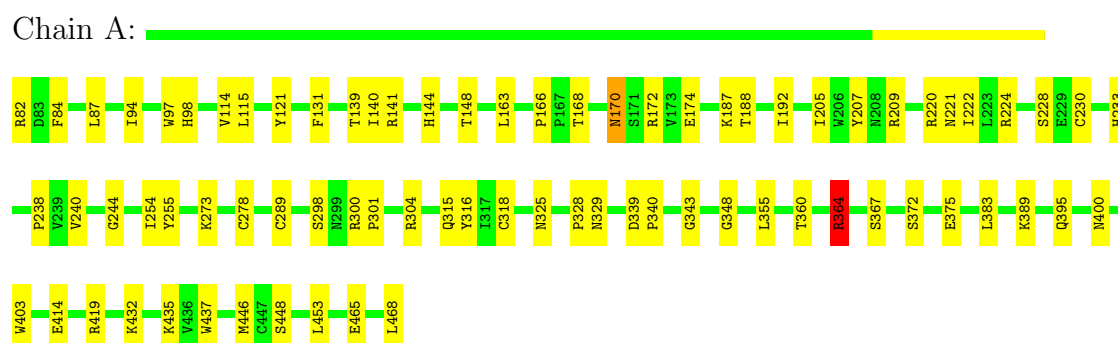
Mol	Chain	Residues	Atoms		ZeroOcc	AltConf
			Total	O		
7	A	196	196	196	0	0

3 Residue-property plots

These plots are drawn for all protein, RNA and DNA chains in the entry. The first graphic for a chain summarises the proportions of errors displayed in the second graphic. The second graphic shows the sequence view annotated by issues in geometry and electron density. Residues are color-coded according to the number of geometric quality criteria for which they contain at least one outlier: green = 0, yellow = 1, orange = 2 and red = 3 or more. A red dot above a residue indicates a poor fit to the electron density ($RSRZ > 2$). Stretches of 2 or more consecutive residues without any outlier are shown as a green connector. Residues present in the sample, but not in the model, are shown in grey.

Note EDS was not executed.

• Molecule 1: NEURAMINIDASE



4 Data and refinement statistics

Xtriage (Phenix) and EDS were not executed - this section will therefore be incomplete.

Property	Value	Source
Space group	I 4 3 2	Depositor
Cell constants a, b, c, α , β , γ	182.80Å 182.80Å 182.80Å 90.00° 90.00° 90.00°	Depositor
Resolution (Å)	6.00 – 2.00	Depositor
% Data completeness (in resolution range)	76.8 (6.00-2.00)	Depositor
R_{merge}	0.09	Depositor
R_{sym}	0.06	Depositor
Refinement program	X-PLOR 3.0	Depositor
R, R_{free}	0.184 , (Not available)	Depositor
Estimated twinning fraction	No twinning to report.	Xtriage
Total number of atoms	3399	wwPDB-VP
Average B, all atoms (Å ²)	35.0	wwPDB-VP

5 Model quality

5.1 Standard geometry

Bond lengths and bond angles in the following residue types are not validated in this section: CA, BMA, NAG, G20, MAN

The Z score for a bond length (or angle) is the number of standard deviations the observed value is removed from the expected value. A bond length (or angle) with $|Z| > 5$ is considered an outlier worth inspection. RMSZ is the root-mean-square of all Z scores of the bond lengths (or angles).

Mol	Chain	Bond lengths		Bond angles	
		RMSZ	$\# Z > 5$	RMSZ	$\# Z > 5$
1	A	0.69	1/3150 (0.0%)	0.85	1/4290 (0.0%)

All (1) bond length outliers are listed below:

Mol	Chain	Res	Type	Atoms	Z	Observed(Å)	Ideal(Å)
1	A	414	GLU	CG-CD	5.91	1.60	1.51

All (1) bond angle outliers are listed below:

Mol	Chain	Res	Type	Atoms	Z	Observed(°)	Ideal(°)
1	A	364	ARG	NE-CZ-NH1	5.45	123.02	120.30

There are no chirality outliers.

There are no planarity outliers.

5.2 Close contacts

In the following table, the Non-H and H(model) columns list the number of non-hydrogen atoms and hydrogen atoms in the chain respectively. The H(added) column lists the number of hydrogens added by MolProbity. The Clashes column lists the number of clashes within the asymmetric unit, and the number in parentheses is this value normalized per 1000 atoms of the molecule in the chain. The Symm-Clashes column gives symmetry related clashes, in the same way as for the Clashes column.

Mol	Chain	Non-H	H(model)	H(added)	Clashes	Symm-Clashes
1	A	3067	0	2893	63	0
2	A	72	0	61	3	0
3	A	11	0	10	0	0
4	A	28	0	26	1	0

Continued on next page...

Continued from previous page...

Mol	Chain	Non-H	H(model)	H(added)	Clashes	Symm-Clashes
5	A	1	0	0	0	0
6	A	24	0	21	2	0
7	A	196	0	0	9	3
All	All	3399	0	3011	64	3

Clashscore is defined as the number of clashes calculated for the entry per 1000 atoms (including hydrogens) of the entry. The overall clashscore for this entry is 10.

All (64) close contacts within the same asymmetric unit are listed below.

Atom-1	Atom-2	Distance(Å)	Clash(Å)
1:A:435:LYS:HD2	1:A:468:LEU:HD11	1.64	0.77
1:A:98:HIS:HE1	1:A:419:ARG:HH11	1.36	0.74
1:A:168:THR:H	1:A:170:ASN:HD21	1.31	0.74
1:A:465:GLU:HB2	7:A:1195(G):HOH:O	1.89	0.72
1:A:209:ARG:HH11	1:A:209:ARG:HG3	1.56	0.70
1:A:84:PHE:CE1	1:A:187:LYS:HD2	2.28	0.69
1:A:87:LEU:H	1:A:233:HIS:HD2	1.42	0.66
1:A:315:GLN:HG3	1:A:316:TYR:N	2.09	0.65
1:A:328:PRO:HG3	1:A:343:GLY:HA3	1.78	0.64
1:A:221:ASN:HB3	1:A:244:GLY:HA2	1.82	0.61
1:A:140:ILE:HD11	7:A:1018(W):HOH:O	2.00	0.61
1:A:435:LYS:HB3	1:A:468:LEU:HD21	1.83	0.60
1:A:87:LEU:H	1:A:233:HIS:CD2	2.19	0.60
1:A:98:HIS:CE1	1:A:419:ARG:HH11	2.17	0.59
1:A:364:ARG:HD2	1:A:375:GLU:OE2	2.03	0.59
1:A:209:ARG:NH1	1:A:209:ARG:HG3	2.19	0.57
1:A:435:LYS:HD2	1:A:468:LEU:CD1	2.35	0.56
1:A:328:PRO:CG	1:A:343:GLY:HA3	2.35	0.56
1:A:97:TRP:H	1:A:395:GLN:HE22	1.52	0.56
1:A:94:ILE:HG23	1:A:448:SER:HB2	1.87	0.56
1:A:170:ASN:HD22	1:A:170:ASN:H	1.55	0.55
1:A:403:TRP:CZ3	1:A:432:LYS:HG3	2.41	0.54
1:A:240:VAL:HG22	1:A:254:ILE:CD1	2.39	0.52
1:A:273:LYS:HE2	7:A:1066(W):HOH:O	2.10	0.52
1:A:240:VAL:HG22	1:A:254:ILE:HD13	1.93	0.51
1:A:192:ILE:HG12	1:A:205:ILE:HG13	1.93	0.51
1:A:437:TRP:CZ2	4:A:477(A):NAG:H3	2.46	0.51
1:A:172:ARG:NH1	1:A:209:ARG:HH21	2.09	0.50
1:A:318:CYS:SG	1:A:383:LEU:O	2.69	0.50
1:A:131:PHE:CE1	1:A:163:LEU:HD12	2.47	0.50
1:A:144:HIS:HD2	7:A:1036(W):HOH:O	1.94	0.49
1:A:188:THR:HG22	1:A:207:TYR:CZ	2.48	0.49

Continued on next page...

Continued from previous page...

Atom-1	Atom-2	Distance(Å)	Clash(Å)
1:A:278:CYS:HB3	1:A:289:CYS:HB3	1.93	0.49
1:A:367:SER:HB2	1:A:400:ASN:HD21	1.78	0.49
1:A:172:ARG:HD2	1:A:174:GLU:OE2	2.13	0.48
1:A:238:PRO:HA	1:A:255:TYR:O	2.13	0.48
1:A:355:LEU:HD23	1:A:360:THR:HG23	1.96	0.48
1:A:94:ILE:HG23	1:A:448:SER:CB	2.46	0.46
1:A:389:LYS:HE2	7:A:1110(E):HOH:O	2.15	0.46
1:A:395:GLN:NE2	7:A:1079(W):HOH:O	2.48	0.46
1:A:221:ASN:HB3	1:A:244:GLY:CA	2.46	0.45
1:A:372:SER:OG	1:A:400:ASN:ND2	2.50	0.45
1:A:273:LYS:HG3	1:A:340:PRO:HD3	1.98	0.44
1:A:121:TYR:CG	1:A:228:SER:HA	2.54	0.43
1:A:205:ILE:N	1:A:205:ILE:HD12	2.34	0.43
1:A:166:PRO:HD3	7:A:1004(W):HOH:O	2.18	0.43
1:A:220:ARG:HH21	2:A:469(A):NAG:H82	1.84	0.43
1:A:84:PHE:CZ	1:A:187:LYS:HD2	2.53	0.42
1:A:98:HIS:HB3	1:A:453:LEU:CD1	2.49	0.42
1:A:325:ASN:O	1:A:348:GLY:HA2	2.20	0.42
6:A:800:G20:O7	6:A:800:G20:C91	2.67	0.42
1:A:188:THR:CG2	1:A:207:TYR:CZ	3.03	0.42
1:A:168:THR:OG1	1:A:170:ASN:ND2	2.53	0.42
1:A:82:ARG:N	7:A:1182(G):HOH:O	2.52	0.41
1:A:325:ASN:ND2	1:A:367:SER:O	2.53	0.41
1:A:220:ARG:HH22	2:A:469(A):NAG:HN2	1.67	0.41
1:A:115:LEU:HA	1:A:115:LEU:HD23	1.87	0.41
1:A:298:SER:OG	1:A:328:PRO:HD3	2.20	0.41
1:A:114:VAL:O	1:A:139:THR:HA	2.20	0.41
1:A:98:HIS:CE1	1:A:419:ARG:NH1	2.85	0.41
1:A:220:ARG:NH2	2:A:469(A):NAG:H82	2.35	0.41
1:A:329:ASN:ND2	7:A:1175(F):HOH:O	2.54	0.40
1:A:300:ARG:HA	1:A:301:PRO:HD2	1.88	0.40
1:A:224:ARG:CD	6:A:800:G20:H922	2.51	0.40

All (3) symmetry-related close contacts are listed below. The label for Atom-2 includes the symmetry operator and encoded unit-cell translations to be applied.

Atom-1	Atom-2	Distance(Å)	Clash(Å)
7:A:1192(G):HOH:O	7:A:1193(G):HOH:O[48_555]	0.33	1.87
7:A:1173(F):HOH:O	7:A:1175(F):HOH:O[48_555]	0.67	1.53
7:A:1183(G):HOH:O	7:A:1183(G):HOH:O[48_555]	1.05	1.15

5.3 Torsion angles

5.3.1 Protein backbone ⓘ

In the following table, the Percentiles column shows the percent Ramachandran outliers of the chain as a percentile score with respect to all X-ray entries followed by that with respect to entries of similar resolution. The Analysed column shows the number of residues for which the backbone conformation was analysed, and the total number of residues.

Mol	Chain	Analysed	Favoured	Allowed	Outliers	Percentiles
1	A	386/388 (100%)	365 (95%)	19 (5%)	2 (0%)	38 29

All (2) Ramachandran outliers are listed below:

Mol	Chain	Res	Type
1	A	148	THR
1	A	222	ILE

5.3.2 Protein sidechains ⓘ

In the following table, the Percentiles column shows the percent sidechain outliers of the chain as a percentile score with respect to all X-ray entries followed by that with respect to entries of similar resolution. The Analysed column shows the number of residues for which the sidechain conformation was analysed, and the total number of residues.

Mol	Chain	Analysed	Rotameric	Outliers	Percentiles
1	A	341/341 (100%)	334 (98%)	7 (2%)	66 67

All (7) residues with a non-rotameric sidechain are listed below:

Mol	Chain	Res	Type
1	A	141	ARG
1	A	170	ASN
1	A	230	CYS
1	A	304	ARG
1	A	339	ASP
1	A	364	ARG
1	A	446	MET

Some sidechains can be flipped to improve hydrogen bonding and reduce clashes. All (10) such sidechains are listed below:

Mol	Chain	Res	Type
1	A	95	ASN
1	A	98	HIS
1	A	144	HIS
1	A	170	ASN
1	A	216	ASN
1	A	233	HIS
1	A	346	ASN
1	A	392	GLN
1	A	395	GLN
1	A	400	ASN

5.3.3 RNA ⓘ

There are no RNA chains in this entry.

5.4 Non-standard residues in protein, DNA, RNA chains ⓘ

There are no non-standard protein/DNA/RNA residues in this entry.

5.5 Carbohydrates ⓘ

6 carbohydrates are modelled in this entry.

In the following table, the Counts columns list the number of bonds (or angles) for which Mogul statistics could be retrieved, the number of bonds (or angles) that are observed in the model and the number of bonds (or angles) that are defined in the chemical component dictionary. The Link column lists molecule types, if any, to which the group is linked. The Z score for a bond length (or angle) is the number of standard deviations the observed value is removed from the expected value. A bond length (or angle) with $|Z| > 2$ is considered an outlier worth inspection. RMSZ is the root-mean-square of all Z scores of the bond lengths (or angles).

Mol	Type	Chain	Res	Link	Bond lengths			Bond angles		
					Counts	RMSZ	# $ Z > 2$	Counts	RMSZ	# $ Z > 2$
2	NAG	A	469(A)	1,2	12,14,15	1.83	4 (33%)	15,19,21	2.08	6 (40%)
2	NAG	A	470(B)	2	12,14,15	2.11	4 (33%)	15,19,21	1.98	3 (20%)
2	BMA	A	471(C)	2	10,11,12	0.78	0	11,15,17	1.48	1 (9%)
2	MAN	A	472(D)	2	10,11,12	2.00	2 (20%)	11,15,17	2.55	7 (63%)
2	MAN	A	473(E)	2	10,11,12	0.82	0	11,15,17	1.10	1 (9%)
2	MAN	A	474(F)	2	10,11,12	0.82	0	11,15,17	1.22	2 (18%)

In the following table, the Chirals column lists the number of chiral outliers, the number of chiral

centers analysed, the number of these observed in the model and the number defined in the chemical component dictionary. Similar counts are reported in the Torsion and Rings columns. '-' means no outliers of that kind were identified.

Mol	Type	Chain	Res	Link	Chirals	Torsions	Rings
2	NAG	A	469(A)	1,2	-	0/6/23/26	0/1/1/1
2	NAG	A	470(B)	2	-	0/6/23/26	0/1/1/1
2	BMA	A	471(C)	2	-	0/2/19/22	0/1/1/1
2	MAN	A	472(D)	2	-	0/2/19/22	0/1/1/1
2	MAN	A	473(E)	2	-	0/2/19/22	0/1/1/1
2	MAN	A	474(F)	2	-	0/2/19/22	0/1/1/1

All (10) bond length outliers are listed below:

Mol	Chain	Res	Type	Atoms	Z	Observed(Å)	Ideal(Å)
2	A	472(D)	MAN	C4-C5	-5.37	1.41	1.53
2	A	470(B)	NAG	C2-N2	-4.67	1.40	1.46
2	A	469(A)	NAG	C4-C3	4.06	1.63	1.52
2	A	470(B)	NAG	O5-C5	-3.74	1.38	1.45
2	A	469(A)	NAG	O4-C4	2.82	1.49	1.43
2	A	472(D)	MAN	C3-C2	2.74	1.58	1.52
2	A	470(B)	NAG	C3-C2	-2.65	1.47	1.52
2	A	469(A)	NAG	O5-C5	-2.62	1.40	1.45
2	A	469(A)	NAG	C4-C5	2.27	1.58	1.53
2	A	470(B)	NAG	C8-C7	2.13	1.55	1.50

All (20) bond angle outliers are listed below:

Mol	Chain	Res	Type	Atoms	Z	Observed(°)	Ideal(°)
2	A	470(B)	NAG	C3-C2-N2	-5.31	103.67	111.76
2	A	469(A)	NAG	C2-N2-C7	-4.38	115.74	123.09
2	A	472(D)	MAN	C6-C5-C4	-4.06	103.19	113.00
2	A	472(D)	MAN	O5-C5-C6	3.79	110.96	106.98
2	A	471(C)	BMA	O5-C5-C6	3.69	110.85	106.98
2	A	472(D)	MAN	C3-C4-C5	-3.45	104.05	110.20
2	A	473(E)	MAN	O3-C3-C2	-2.91	104.62	109.94
2	A	469(A)	NAG	O5-C5-C4	-2.88	107.00	110.65
2	A	472(D)	MAN	O3-C3-C4	-2.71	104.28	110.35
2	A	470(B)	NAG	C8-C7-N2	2.67	121.33	116.11
2	A	469(A)	NAG	O4-C4-C3	2.67	116.34	110.35
2	A	470(B)	NAG	O7-C7-C8	-2.54	117.08	122.04
2	A	469(A)	NAG	O3-C3-C2	-2.50	103.84	109.09
2	A	472(D)	MAN	O4-C4-C3	2.41	115.75	110.35
2	A	472(D)	MAN	C4-C3-C2	2.39	113.71	110.50

Continued on next page...

Continued from previous page...

Mol	Chain	Res	Type	Atoms	Z	Observed(°)	Ideal(°)
2	A	474(F)	MAN	C3-C4-C5	-2.36	105.98	110.20
2	A	474(F)	MAN	O4-C4-C5	2.35	115.47	109.28
2	A	469(A)	NAG	C3-C2-N2	-2.28	108.29	111.76
2	A	469(A)	NAG	O7-C7-C8	-2.22	117.70	122.04
2	A	472(D)	MAN	O2-C2-C3	2.08	114.67	110.18

There are no chirality outliers.

There are no torsion outliers.

There are no ring outliers.

5.6 Ligand geometry ⓘ

Of 5 ligands modelled in this entry, 1 is monoatomic - leaving 4 for Mogul analysis.

In the following table, the Counts columns list the number of bonds (or angles) for which Mogul statistics could be retrieved, the number of bonds (or angles) that are observed in the model and the number of bonds (or angles) that are defined in the chemical component dictionary. The Link column lists molecule types, if any, to which the group is linked. The Z score for a bond length (or angle) is the number of standard deviations the observed value is removed from the expected value. A bond length (or angle) with $|Z| > 2$ is considered an outlier worth inspection. RMSZ is the root-mean-square of all Z scores of the bond lengths (or angles).

Mol	Type	Chain	Res	Link	Bond lengths			Bond angles		
					Counts	RMSZ	$\# Z > 2$	Counts	RMSZ	$\# Z > 2$
3	MAN	A	475(G)	-	10,11,12	1.31	1 (10%)	11,15,17	1.80	2 (18%)
4	NAG	A	476(A)	1	12,14,15	1.12	1 (8%)	15,19,21	1.23	2 (13%)
4	NAG	A	477(A)	1	12,14,15	1.34	1 (8%)	15,19,21	2.68	7 (46%)
6	G20	A	800	-	24,24,24	1.25	2 (8%)	33,33,33	2.36	9 (27%)

In the following table, the Chirals column lists the number of chiral outliers, the number of chiral centers analysed, the number of these observed in the model and the number defined in the chemical component dictionary. Similar counts are reported in the Torsion and Rings columns. '-' means no outliers of that kind were identified.

Mol	Type	Chain	Res	Link	Chirals	Torsions	Rings
3	MAN	A	475(G)	-	-	0/2/19/22	0/1/1/1
4	NAG	A	476(A)	1	-	0/6/23/26	0/1/1/1
4	NAG	A	477(A)	1	-	0/6/23/26	0/1/1/1
6	G20	A	800	-	-	0/23/39/39	0/1/1/1

All (5) bond length outliers are listed below:

Mol	Chain	Res	Type	Atoms	Z	Observed(Å)	Ideal(Å)
6	A	800	G20	C4-C5	-3.77	1.50	1.54
3	A	475(G)	MAN	O5-C5	-3.48	1.39	1.45
4	A	477(A)	NAG	C4-C5	2.95	1.59	1.53
4	A	476(A)	NAG	C2-N2	-2.75	1.43	1.46
6	A	800	G20	O6-C6	-2.14	1.42	1.46

All (20) bond angle outliers are listed below:

Mol	Chain	Res	Type	Atoms	Z	Observed(°)	Ideal(°)
6	A	800	G20	O6-C2-C3	-8.91	112.79	124.33
4	A	477(A)	NAG	C3-C2-N2	-5.09	104.01	111.76
3	A	475(G)	MAN	O5-C5-C6	-5.09	101.64	106.98
4	A	477(A)	NAG	C6-C5-C4	4.58	124.07	113.00
6	A	800	G20	O6-C2-C1	4.47	120.70	111.88
4	A	477(A)	NAG	O5-C5-C6	-4.17	102.61	106.98
6	A	800	G20	C81-N8-C9	-3.81	108.61	115.81
6	A	800	G20	O6-C6-C5	-3.65	103.77	110.10
6	A	800	G20	C81-N8-C7	3.44	134.98	121.88
4	A	477(A)	NAG	O7-C7-C8	-3.08	116.03	122.04
4	A	477(A)	NAG	C2-N2-C7	-3.01	118.04	123.09
4	A	477(A)	NAG	C8-C7-N2	2.95	121.88	116.11
6	A	800	G20	O10-C10-C11	-2.52	117.12	122.04
3	A	475(G)	MAN	O5-C5-C4	2.48	113.80	110.65
6	A	800	G20	C9-N8-C7	-2.22	116.09	123.88
4	A	476(A)	NAG	O3-C3-C2	2.16	113.63	109.09
6	A	800	G20	O1B-C1-C2	2.07	119.87	114.66
4	A	477(A)	NAG	O4-C4-C3	-2.07	105.71	110.35
6	A	800	G20	C5-C6-C7	-2.05	106.35	111.44
4	A	476(A)	NAG	C3-C2-N2	-2.05	108.64	111.76

There are no chirality outliers.

There are no torsion outliers.

There are no ring outliers.

5.7 Other polymers ⓘ

There are no such residues in this entry.

5.8 Polymer linkage issues

There are no chain breaks in this entry.

6 Fit of model and data ⓘ

6.1 Protein, DNA and RNA chains ⓘ

EDS was not executed - this section will therefore be empty.

6.2 Non-standard residues in protein, DNA, RNA chains ⓘ

EDS was not executed - this section will therefore be empty.

6.3 Carbohydrates ⓘ

EDS was not executed - this section will therefore be empty.

6.4 Ligands ⓘ

EDS was not executed - this section will therefore be empty.

6.5 Other polymers ⓘ

EDS was not executed - this section will therefore be empty.