



Full wwPDB X-ray Structure Validation Report

Feb 26, 2014 – 04:00 PM GMT

PDB ID : 2QYN
Title : Crystal structure of PDE4D2 in complex with inhibitor NPV
Authors : Ke, H.
Deposited on : 2007-08-15
Resolution : 1.57 Å(reported)

This is a full wwPDB validation report for a publicly released PDB entry.
We welcome your comments at validation@mail.wwpdb.org
A user guide is available at <http://wwpdb.org/ValidationPDFNotes.html>

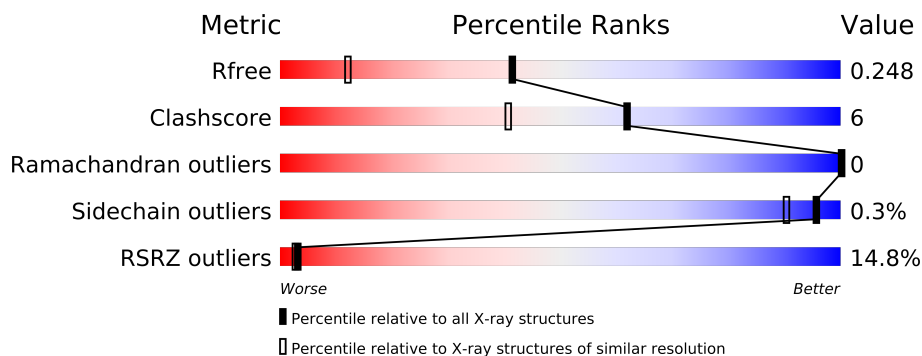
The following versions of software and data (see [references](#)) were used in the production of this report:

MolProbity : 4.02b-467
Mogul : 1.15 2013
Xtriage (Phenix) : dev-1323
EDS : stable22639
Percentile statistics : 21963
Refmac : 5.8.0049
CCP4 : 6.3.0 (Settle)
Ideal geometry (proteins) : Engh & Huber (2001)
Ideal geometry (DNA, RNA) : Parkinson et. al. (1996)
Validation Pipeline (wwPDB-VP) : stable22683

1 Overall quality at a glance

The reported resolution of this entry is 1.57 Å.

Percentile scores (ranging between 0-100) for global validation metrics of the entry are shown in the following graphic. The table shows the number of entries on which the scores are based.



Metric	Whole archive (#Entries)	Similar resolution (#Entries, resolution range(Å))
R_{free}	66092	2778 (1.60-1.56)
Clashscore	79885	3207 (1.60-1.56)
Ramachandran outliers	78287	3107 (1.60-1.56)
Sidechain outliers	78261	3104 (1.60-1.56)
RSRZ outliers	66119	2778 (1.60-1.56)

The table below summarises the geometric issues observed across the polymeric chains and their fit to the electron density. The red, orange, yellow and green segments on the lower bar indicate the fraction of residues that contain outliers for ≥ 3 , 2, 1 and 0 types of geometric quality criteria. The upper red bar (where present) indicates the fraction of residues that have poor fit to the electron density.

Mol	Chain	Length	Quality of chain
1	A	328	
1	B	328	

The following table lists non-polymeric compounds that are outliers for geometric or electron-density-fit criteria:

Mol	Type	Chain	Res	Geometry	Electron density
2	NPV	B	1	-	X

2 Entry composition i

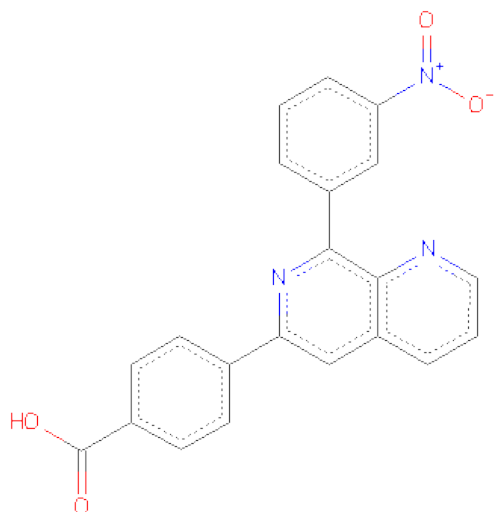
There are 5 unique types of molecules in this entry. The entry contains 5694 atoms, of which 0 are hydrogen and 0 are deuterium.

In the tables below, the ZeroOcc column contains the number of atoms modelled with zero occupancy, the AltConf column contains the number of residues with at least one atom in alternate conformation and the Trace column contains the number of residues modelled with at most 2 atoms.

- Molecule 1 is a protein called cAMP-specific 3',5'-cyclic phosphodiesterase 4D.

Mol	Chain	Residues	Atoms					ZeroOcc	AltConf	Trace
1	A	326	Total	C	N	O	S	0	0	0
			2638	1668	450	506	14			
1	B	325	Total	C	N	O	S	0	0	0
			2631	1664	450	503	14			

- Molecule 2 is 4-[8-(3-NITROPHENYL)-1,7-NAPHTHYRIDIN-6-YL]BENZOICACID (three-letter code: NPV) (formula: C₂₁H₁₃N₃O₄).



Mol	Chain	Residues	Atoms				ZeroOcc	AltConf
2	A	1	Total	C	N	O	0	0
			28	21	3	4		
2	B	1	Total	C	N	O	0	0
			28	21	3	4		

- Molecule 3 is ZINC ION (three-letter code: ZN) (formula: Zn).

Mol	Chain	Residues	Atoms		ZeroOcc	AltConf
3	B	1	Total 1	Zn 1	0	0
3	A	1	Total 1	Zn 1	0	0

- Molecule 4 is MAGNESIUM ION (three-letter code: MG) (formula: Mg).

Mol	Chain	Residues	Atoms		ZeroOcc	AltConf
4	B	1	Total 1	Mg 1	0	0
4	A	1	Total 1	Mg 1	0	0

- Molecule 5 is water.

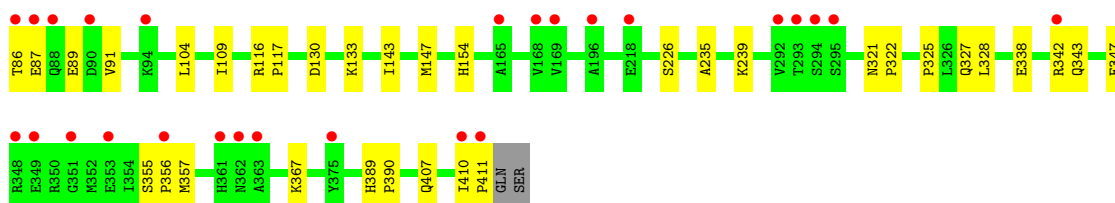
Mol	Chain	Residues	Atoms		ZeroOcc	AltConf
5	A	225	Total 225	O 225	0	0
5	B	140	Total 140	O 140	0	0

3 Residue-property plots

These plots are drawn for all protein, RNA and DNA chains in the entry. The first graphic for a chain summarises the proportions of errors displayed in the second graphic. The second graphic shows the sequence view annotated by issues in geometry and electron density. Residues are color-coded according to the number of geometric quality criteria for which they contain at least one outlier: green = 0, yellow = 1, orange = 2 and red = 3 or more. A red dot above a residue indicates a poor fit to the electron density ($\text{RSRZ} > 2$). Stretches of 2 or more consecutive residues without any outlier are shown as a green connector. Residues present in the sample, but not in the model, are shown in grey.

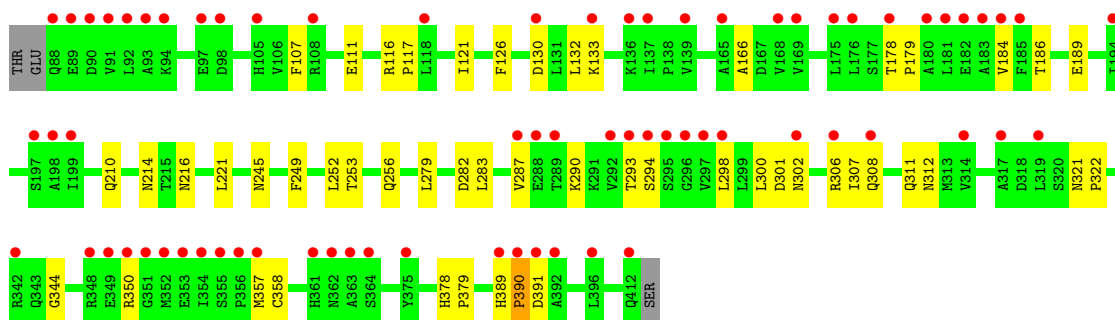
- Molecule 1: cAMP-specific 3',5'-cyclic phosphodiesterase 4D

Chain A: 



- Molecule 1: cAMP-specific 3',5'-cyclic phosphodiesterase 4D

Chain B: 



4 Data and refinement statistics

Property	Value	Source
Space group	P 21 21 21	Depositor
Cell constants a, b, c, α , β , γ	58.10Å 80.63Å 163.31Å 90.00° 90.00° 90.00°	Depositor
Resolution (Å)	30.00 – 1.57 32.40 – 1.57	Depositor EDS
% Data completeness (in resolution range)	(Not available) (30.00-1.57) 92.6 (32.40-1.57)	Depositor EDS
R_{merge}	0.05	Depositor
R_{sym}	(Not available)	Depositor
$\langle I/\sigma(I) \rangle$ ¹	2.32 (at 1.57Å)	Xtriage
Refinement program	CNS 1.2	Depositor
R, R_{free}	0.225 , 0.248 0.224 , 0.248	Depositor DCC
R_{free} test set	10042 reflections (10.06%)	DCC
Wilson B-factor (Å ²)	19.3	Xtriage
Anisotropy	0.325	Xtriage
Bulk solvent k_{sol} (e/Å ³), B_{sol} (Å ²)	0.39 , 42.7	EDS
Estimated twinning fraction	No twinning to report.	Xtriage
L-test for twinning	$\langle L \rangle = 0.50$, $\langle L^2 \rangle = 0.33$	Xtriage
Outliers	0 of 103855 reflections	Xtriage
F_o, F_c correlation	0.95	EDS
Total number of atoms	5694	wwPDB-VP
Average B, all atoms (Å ²)	26.0	wwPDB-VP

Xtriage's analysis on translational NCS is as follows: *The largest off-origin peak in the Patterson function is 4.02% of the height of the origin peak. No significant pseudotranslation is detected.*

¹Intensities estimated from amplitudes.

5 Model quality

5.1 Standard geometry

Bond lengths and bond angles in the following residue types are not validated in this section: ZN, NPV, MG

The Z score for a bond length (or angle) is the number of standard deviations the observed value is removed from the expected value. A bond length (or angle) with $|Z| > 5$ is considered an outlier worth inspection. RMSZ is the root-mean-square of all Z scores of the bond lengths (or angles).

Mol	Chain	Bond lengths		Bond angles	
		RMSZ	$\# Z > 5$	RMSZ	$\# Z > 5$
1	A	0.30	0/2692	0.53	0/3658
1	B	0.27	0/2685	0.50	0/3648
All	All	0.28	0/5377	0.51	0/7306

There are no bond length outliers.

There are no bond angle outliers.

There are no chirality outliers.

There are no planarity outliers.

5.2 Close contacts

In the following table, the Non-H and H(model) columns list the number of non-hydrogen atoms and hydrogen atoms in the chain respectively. The H(added) column lists the number of hydrogens added by MolProbity. The Clashes column lists the number of clashes within the asymmetric unit, and the number in parentheses is this value normalized per 1000 atoms of the molecule in the chain. The Symm-Clashes column gives symmetry related clashes, in the same way as for the Clashes column.

Mol	Chain	Non-H	H(model)	H(added)	Clashes	Symm-Clashes
1	A	2638	0	2591	23	0
1	B	2631	0	2586	39	0
2	A	28	0	12	1	0
2	B	28	0	12	1	0
3	A	1	0	0	0	0
3	B	1	0	0	0	0
4	A	1	0	0	0	0
4	B	1	0	0	0	0
5	A	225	0	0	2	0
5	B	140	0	0	3	0

Continued on next page...

Continued from previous page...

Mol	Chain	Non-H	H(model)	H(added)	Clashes	Symm-Clashes
All	All	5694	0	5201	60	0

Clashscore is defined as the number of clashes calculated for the entry per 1000 atoms (including hydrogens) of the entry. The overall clashscore for this entry is 6.

All (60) close contacts within the same asymmetric unit are listed below.

Atom-1	Atom-2	Distance(Å)	Clash(Å)
1:B:293:THR:HG22	1:B:294:SER:H	1.30	0.93
1:A:226:SER:HB2	5:A:661:HOH:O	1.75	0.87
1:A:239:LYS:HG2	1:B:221:LEU:HD21	1.55	0.86
1:B:184:VAL:HG11	1:B:300:LEU:HD12	1.69	0.73
1:B:210:GLN:HG3	1:B:214:ASN:HD21	1.55	0.71
1:A:239:LYS:HG2	1:B:221:LEU:CD2	2.21	0.69
1:B:282:ASP:HB3	1:B:308:GLN:NE2	2.07	0.69
1:A:104:LEU:HD11	1:A:109:ILE:HD11	1.75	0.68
1:A:154:HIS:NE2	5:A:660:HOH:O	2.27	0.67
1:B:321:ASN:HB2	1:B:322:PRO:HD3	1.79	0.64
1:B:293:THR:HG22	1:B:294:SER:N	2.10	0.63
1:A:356:PRO:HB2	1:A:357:MET:HE2	1.79	0.63
1:B:179:PRO:HD2	1:B:391:ASP:CG	2.19	0.63
1:B:302:ASN:O	1:B:306:ARG:HG3	1.98	0.62
1:A:389:HIS:CE1	1:A:390:PRO:HB3	2.37	0.60
1:B:178:THR:HG23	1:B:391:ASP:OD2	2.02	0.59
1:B:210:GLN:HG3	1:B:214:ASN:ND2	2.18	0.58
1:B:283:LEU:O	1:B:287:VAL:HG23	2.04	0.58
1:B:301:ASP:OD1	5:B:606:HOH:O	2.17	0.58
1:B:107:PHE:O	1:B:111:GLU:HG3	2.02	0.57
1:B:253:THR:OG1	1:B:256:GLN:HG3	2.07	0.55
1:B:282:ASP:HB3	1:B:308:GLN:CD	2.28	0.54
1:A:343:GLN:O	1:A:347:GLU:HG3	2.06	0.54
1:B:184:VAL:CG1	1:B:300:LEU:HD12	2.37	0.54
1:A:235:ALA:O	1:A:239:LYS:HG3	2.08	0.53
1:B:189:GLU:OE1	1:B:306:ARG:NH2	2.41	0.53
1:B:186:THR:HG23	1:B:306:ARG:HH22	1.73	0.52
1:B:121:ILE:HD12	1:B:166:ALA:HB1	1.93	0.51
1:B:186:THR:OG1	1:B:189:GLU:HG3	2.10	0.50
1:A:130:ASP:OD1	1:A:133:LYS:HD2	2.11	0.50
1:B:357:MET:SD	2:B:1:NPV:C23	3.01	0.49
1:A:321:ASN:HB2	1:A:322:PRO:HD3	1.93	0.49
1:B:130:ASP:OD1	1:B:133:LYS:HD2	2.13	0.49
1:B:389:HIS:CE1	1:B:390:PRO:HB3	2.47	0.49
1:B:344:GLY:HA3	1:B:358:CYS:O	2.12	0.49

Continued on next page...

Continued from previous page...

Atom-1	Atom-2	Distance(Å)	Clash(Å)
1:A:87:GLU:O	1:A:91:VAL:HG23	2.13	0.49
1:A:86:THR:HA	1:A:89:GLU:OE2	2.14	0.48
1:B:307:ILE:O	1:B:311:GLN:HG3	2.13	0.47
1:A:410:ILE:HB	1:A:411:PRO:HD3	1.95	0.47
1:B:293:THR:CG2	1:B:294:SER:H	2.11	0.47
1:B:179:PRO:HD2	1:B:391:ASP:OD2	2.15	0.47
1:B:290:LYS:HG3	1:B:298:LEU:CD1	2.44	0.46
1:B:378:HIS:HB3	1:B:379:PRO:HD3	1.97	0.46
1:A:357:MET:SD	2:A:1:NPV:C23	3.04	0.46
1:A:355:SER:HB3	1:A:356:PRO:HD2	1.98	0.46
1:B:126:PHE:HB3	1:B:132:LEU:CD1	2.46	0.45
1:A:116:ARG:N	1:A:117:PRO:CD	2.80	0.45
1:B:249:PHE:HA	1:B:252:LEU:HD13	1.98	0.45
1:A:407:GLN:O	1:A:411:PRO:HD3	2.17	0.45
1:B:389:HIS:HA	1:B:390:PRO:HA	1.71	0.45
1:A:143:ILE:O	1:A:147:MET:HG3	2.16	0.44
1:B:116:ARG:N	1:B:117:PRO:CD	2.80	0.44
1:B:350:ARG:HD3	5:B:577:HOH:O	2.18	0.44
1:A:327:GLN:NE2	1:A:328:LEU:HG	2.33	0.43
1:B:216:ASN:HA	5:B:637:HOH:O	2.19	0.42
1:B:279:LEU:HG	1:B:312:ASN:OD1	2.20	0.41
1:A:367:LYS:HG2	1:A:410:ILE:HD13	2.03	0.41
1:A:338:GLU:OE2	1:A:342:ARG:NH2	2.55	0.40
1:B:132:LEU:HD12	1:B:132:LEU:H	1.87	0.40
1:A:325:PRO:HB2	1:A:327:GLN:HE22	1.86	0.40

There are no symmetry-related clashes.

5.3 Torsion angles

5.3.1 Protein backbone ⓘ

In the following table, the Percentiles column shows the percent Ramachandran outliers of the chain as a percentile score with respect to all X-ray entries followed by that with respect to entries of similar resolution. The Analysed column shows the number of residues for which the backbone conformation was analysed, and the total number of residues.

Mol	Chain	Analysed	Favoured	Allowed	Outliers	Percentiles	
1	A	324/328 (99%)	316 (98%)	8 (2%)	0	100	100
1	B	323/328 (98%)	312 (97%)	11 (3%)	0	100	100
All	All	647/656 (99%)	628 (97%)	19 (3%)	0	100	100

There are no Ramachandran outliers to report.

5.3.2 Protein sidechains ⓘ

In the following table, the Percentiles column shows the percent sidechain outliers of the chain as a percentile score with respect to all X-ray entries followed by that with respect to entries of similar resolution. The Analysed column shows the number of residues for which the sidechain conformation was analysed, and the total number of residues.

Mol	Chain	Analysed	Rotameric	Outliers	Percentiles	
1	A	298/300 (99%)	298 (100%)	0	100	100
1	B	297/300 (99%)	295 (99%)	2 (1%)	91	80
All	All	595/600 (99%)	593 (100%)	2 (0%)	96	90

All (2) residues with a non-rotameric sidechain are listed below:

Mol	Chain	Res	Type
1	B	245	ASN
1	B	390	PRO

Some sidechains can be flipped to improve hydrogen bonding and reduce clashes. All (11) such sidechains are listed below:

Mol	Chain	Res	Type
1	A	127	GLN
1	A	242	GLN
1	A	362	ASN
1	B	210	GLN
1	B	214	ASN
1	B	242	GLN
1	B	245	ASN
1	B	258	GLN
1	B	302	ASN
1	B	308	GLN
1	B	362	ASN

5.3.3 RNA ⓘ

There are no RNA chains in this entry.

5.4 Non-standard residues in protein, DNA, RNA chains ⓘ

There are no non-standard protein/DNA/RNA residues in this entry.

5.5 Carbohydrates ⓘ

There are no carbohydrates in this entry.

5.6 Ligand geometry ⓘ

Of 6 ligands modelled in this entry, 4 are monoatomic - leaving 2 for Mogul analysis.

In the following table, the Counts columns list the number of bonds (or angles) for which Mogul statistics could be retrieved, the number of bonds (or angles) that are observed in the model and the number of bonds (or angles) that are defined in the chemical component dictionary. The Link column lists molecule types, if any, to which the group is linked. The Z score for a bond length (or angle) is the number of standard deviations the observed value is removed from the expected value. A bond length (or angle) with $|Z| > 2$ is considered an outlier worth inspection. RMSZ is the root-mean-square of all Z scores of the bond lengths (or angles).

Mol	Type	Chain	Res	Link	Bond lengths			Bond angles		
					Counts	RMSZ	$\# Z > 2$	Counts	RMSZ	$\# Z > 2$
2	NPV	A	1	-	31,31,31	2.68	6 (19%)	44,44,44	1.57	10 (22%)
2	NPV	B	1	-	31,31,31	2.69	7 (22%)	44,44,44	1.64	9 (20%)

In the following table, the Chirals column lists the number of chiral outliers, the number of chiral centers analysed, the number of these observed in the model and the number defined in the chemical component dictionary. Similar counts are reported in the Torsion and Rings columns. '-' means no outliers of that kind were identified.

Mol	Type	Chain	Res	Link	Chirals	Torsions	Rings
2	NPV	A	1	-	-	0/16/16/16	0/2/4/4
2	NPV	B	1	-	-	0/16/16/16	0/2/4/4

All (13) bond length outliers are listed below:

Mol	Chain	Res	Type	Atoms	Z	Observed(Å)	Ideal(Å)
2	B	1	NPV	C24-N26	-8.35	1.33	1.46
2	A	1	NPV	C24-N26	-8.33	1.33	1.46
2	B	1	NPV	C20-C18	-7.33	1.39	1.49
2	A	1	NPV	C20-C18	-7.26	1.39	1.49
2	B	1	NPV	C7-C10	-5.64	1.39	1.48
2	A	1	NPV	C7-C10	-5.58	1.39	1.48

Continued on next page...

Continued from previous page...

Mol	Chain	Res	Type	Atoms	Z	Observed(Å)	Ideal(Å)
2	B	1	NPV	C4-C3	-5.49	1.38	1.49
2	A	1	NPV	C4-C3	-5.47	1.38	1.49
2	A	1	NPV	C11-C10	3.82	1.39	1.37
2	B	1	NPV	C11-C10	3.71	1.39	1.37
2	B	1	NPV	O28-N26	-2.31	1.21	1.25
2	A	1	NPV	O28-N26	-2.30	1.21	1.25
2	B	1	NPV	C18-N19	2.00	1.34	1.32

All (19) bond angle outliers are listed below:

Mol	Chain	Res	Type	Atoms	Z	Observed(°)	Ideal(°)
2	B	1	NPV	C11-C10-C7	-4.58	121.41	123.42
2	B	1	NPV	C20-C18-N19	3.90	118.96	115.42
2	A	1	NPV	C20-C18-N19	3.63	118.72	115.42
2	A	1	NPV	C15-N16-C17	3.62	121.65	117.40
2	B	1	NPV	C15-N16-C17	3.57	121.59	117.40
2	A	1	NPV	C11-C10-C7	-3.09	122.07	123.42
2	A	1	NPV	O28-N26-C24	2.96	120.10	114.42
2	A	1	NPV	C10-C11-C12	-2.93	119.05	120.76
2	B	1	NPV	O28-N26-C24	2.88	119.96	114.42
2	B	1	NPV	C10-C11-C12	-2.82	119.12	120.76
2	A	1	NPV	C18-N19-C10	2.72	122.43	118.62
2	A	1	NPV	C11-C10-N19	-2.64	119.82	121.25
2	B	1	NPV	C18-N19-C10	2.58	122.25	118.62
2	B	1	NPV	C11-C10-N19	-2.41	119.94	121.25
2	A	1	NPV	C18-C17-N16	-2.24	120.65	124.99
2	B	1	NPV	C18-C17-N16	-2.24	120.65	124.99
2	A	1	NPV	C14-C15-N16	-2.10	120.72	123.89
2	B	1	NPV	C14-C15-N16	-2.06	120.78	123.89
2	A	1	NPV	C17-C18-N19	-2.01	120.05	122.59

There are no chirality outliers.

There are no torsion outliers.

There are no ring outliers.

5.7 Other polymers ⓘ

There are no such residues in this entry.

5.8 Polymer linkage issues

There are no chain breaks in this entry.

6 Fit of model and data ⓘ

6.1 Protein, DNA and RNA chains ⓘ

In the following table, the column labelled ‘#RSRZ> 2’ contains the number (and percentage) of RSRZ outliers, followed by percent RSRZ outliers for the chain as percentile scores relative to all X-ray entries and entries of similar resolution. The OWAB column contains the minimum, median, 95th percentile and maximum values of the occupancy-weighted average B-factor per residue. The column labelled ‘Q< 0.9’ lists the number of (and percentage) of residues with an average occupancy less than 0.9.

Mol	Chain	Analysed	<RSRZ>	#RSRZ>2	OWAB(Å ²)	Q<0.9
1	A	326/328 (99%)	0.43	26 (7%) 12 12	11, 21, 41, 50	0
1	B	325/328 (99%)	1.21	71 (21%) 1 1	13, 29, 51, 58	0
All	All	651/656 (99%)	0.82	97 (14%) 3 3	11, 24, 46, 58	0

All (97) RSRZ outliers are listed below:

Mol	Chain	Res	Type	RSRZ
1	A	86	THR	7.8
1	B	294	SER	7.2
1	B	353	GLU	6.2
1	B	295	SER	5.9
1	B	412	GLN	5.8
1	A	294	SER	5.8
1	B	354	ILE	5.7
1	B	296	GLY	5.4
1	B	91	VAL	5.1
1	B	293	THR	5.1
1	B	88	GLN	4.9
1	B	183	ALA	4.8
1	B	137	ILE	4.7
1	A	87	GLU	4.7
1	B	356	PRO	4.6
1	B	297	VAL	4.5
1	B	363	ALA	4.4
1	B	94	LYS	4.4
1	B	314	VAL	4.3
1	B	348	ARG	4.3
1	B	90	ASP	4.2
1	B	89	GLU	4.2
1	B	139	VAL	4.1
1	A	90	ASP	4.0

Continued on next page...

Continued from previous page...

Mol	Chain	Res	Type	RSRZ
1	B	375	TYR	3.9
1	B	181	LEU	3.7
1	B	92	LEU	3.7
1	B	349	GLU	3.6
1	B	355	SER	3.5
1	B	169	VAL	3.4
1	B	389	HIS	3.3
1	B	168	VAL	3.3
1	B	288	GLU	3.3
1	B	93	ALA	3.2
1	B	133	LYS	3.2
1	A	410	ILE	3.2
1	B	182	GLU	3.2
1	B	362	ASN	3.2
1	B	391	ASP	3.2
1	B	292	VAL	3.2
1	B	298	LEU	3.2
1	A	168	VAL	3.1
1	A	356	PRO	3.0
1	B	352	MET	3.0
1	B	319	LEU	3.0
1	A	362	ASN	3.0
1	B	390	PRO	2.9
1	B	287	VAL	2.9
1	A	363	ALA	2.9
1	B	98	ASP	2.9
1	A	88	GLN	2.9
1	B	194	ILE	2.8
1	B	108	ARG	2.8
1	B	199	ILE	2.8
1	B	357	MET	2.8
1	B	289	THR	2.8
1	B	396	LEU	2.8
1	A	292	VAL	2.8
1	B	130	ASP	2.8
1	B	350	ARG	2.7
1	B	184	VAL	2.6
1	A	349	GLU	2.6
1	B	317	ALA	2.6
1	A	353	GLU	2.6
1	A	169	VAL	2.6
1	B	136	LYS	2.6

Continued on next page...

Continued from previous page...

Mol	Chain	Res	Type	RSRZ
1	B	197	SER	2.5
1	A	295	SER	2.4
1	B	342	ARG	2.4
1	A	375	TYR	2.4
1	B	180	ALA	2.4
1	A	411	PRO	2.4
1	B	306	ARG	2.3
1	B	392	ALA	2.3
1	B	175	LEU	2.3
1	B	351	GLY	2.3
1	A	165	ALA	2.3
1	B	97	GLU	2.2
1	A	293	THR	2.2
1	B	165	ALA	2.2
1	A	218	GLU	2.2
1	A	361	HIS	2.2
1	B	118	LEU	2.2
1	B	176	LEU	2.2
1	B	308	GLN	2.2
1	A	342	ARG	2.1
1	B	178	THR	2.1
1	A	94	LYS	2.1
1	A	196	ALA	2.1
1	B	105	HIS	2.1
1	B	361	HIS	2.1
1	B	364	SER	2.1
1	A	348	ARG	2.0
1	B	185	PHE	2.0
1	B	198	ALA	2.0
1	A	351	GLY	2.0
1	B	302	ASN	2.0

6.2 Non-standard residues in protein, DNA, RNA chains ⓘ

There are no non-standard protein/DNA/RNA residues in this entry.

6.3 Carbohydrates ⓘ

There are no carbohydrates in this entry.

6.4 Ligands

In the following table, the Atoms column lists the number of modelled atoms in the group and the number defined in the chemical component dictionary. LLDF column lists the quality of electron density of the group with respect to its neighbouring residues in protein, DNA or RNA chains. The B-factors column lists the minimum, median, 95th percentile and maximum values of B factors of atoms in the group. The column labelled 'Q < 0.9' lists the number of atoms with occupancy less than 0.9.

Mol	Type	Chain	Res	Atoms	RSR	LLDF	B-factors(Å ²)	Q<0.9
2	NPV	B	1	28/28	0.18	2.15	22,25,40,41	0
2	NPV	A	1	28/28	0.14	1.42	17,21,38,41	0
4	MG	B	502	1/1	0.14	0.43	14,14,14,14	0
4	MG	A	502	1/1	0.12	-0.12	12,12,12,12	0
3	ZN	A	501	1/1	0.06	-3.67	14,14,14,14	0
3	ZN	B	501	1/1	0.04	-4.05	18,18,18,18	0

6.5 Other polymers

There are no such residues in this entry.