



Full wwPDB X-ray Structure Validation Report i

Mar 1, 2014 – 12:15 AM GMT

PDB ID : 1R0X
Title : Cystic fibrosis transmembrane conductance regulator (CFTR) nucleotide-binding domain one (NBD1) with ATP
Authors : Lewis, H.A.; Buchanan, S.G.; Burley, S.K.; Conners, K.; Dickey, M.; Dorwart, M.; Fowler, R.; Gao, X.; Guggino, W.B.; Hendrickson, W.A.
Deposited on : 2003-09-23
Resolution : 2.20 Å(reported)

This is a full wwPDB validation report for a publicly released PDB entry.
We welcome your comments at validation@mail.wwpdb.org
A user guide is available at <http://wwpdb.org/ValidationPDFNotes.html>

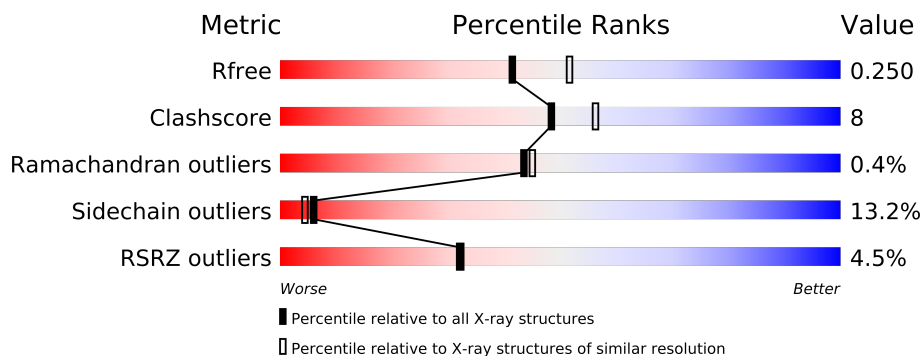
The following versions of software and data (see [references](#)) were used in the production of this report:

MolProbity	:	4.02b-467
Mogul	:	1.15 2013
Xtriage (Phenix)	:	dev-1323
EDS	:	stable22639
Percentile statistics	:	21963
Refmac	:	5.8.0049
CCP4	:	6.3.0 (Settle)
Ideal geometry (proteins)	:	Engh & Huber (2001)
Ideal geometry (DNA, RNA)	:	Parkinson et. al. (1996)
Validation Pipeline (wwPDB-VP)	:	stable22683

1 Overall quality at a glance

The reported resolution of this entry is 2.20 Å.

Percentile scores (ranging between 0-100) for global validation metrics of the entry are shown in the following graphic. The table shows the number of entries on which the scores are based.



Metric	Whole archive (#Entries)	Similar resolution (#Entries, resolution range(Å))
R_{free}	66092	2938 (2.20-2.20)
Clashscore	79885	3751 (2.20-2.20)
Ramachandran outliers	78287	3681 (2.20-2.20)
Sidechain outliers	78261	3682 (2.20-2.20)
RSRZ outliers	66119	2939 (2.20-2.20)

The table below summarises the geometric issues observed across the polymeric chains and their fit to the electron density. The red, orange, yellow and green segments on the lower bar indicate the fraction of residues that contain outliers for ≥ 3 , 2, 1 and 0 types of geometric quality criteria. The upper red bar (where present) indicates the fraction of residues that have poor fit to the electron density.

Mol	Chain	Length	Quality of chain
1	A	286	
1	B	286	
1	C	286	
1	D	286	

The following table lists non-polymeric compounds that are outliers for geometric or electron-density-fit criteria:

Mol	Type	Chain	Res	Geometry	Electron density
4	ACY	D	8	-	X

2 Entry composition

There are 5 unique types of molecules in this entry. The entry contains 8852 atoms, of which 0 are hydrogen and 0 are deuterium.

In the tables below, the ZeroOcc column contains the number of atoms modelled with zero occupancy, the AltConf column contains the number of residues with at least one atom in alternate conformation and the Trace column contains the number of residues modelled with at most 2 atoms.

- Molecule 1 is a protein called Cystic fibrosis transmembrane conductance regulator.

Mol	Chain	Residues	Atoms					ZeroOcc	AltConf	Trace
1	A	264	Total	C	N	O	S	0	0	0
			2082	1326	344	400	12			
1	B	265	Total	C	N	O	S	0	0	0
			2089	1330	345	402	12			
1	C	265	Total	C	N	O	S	0	0	0
			2089	1330	345	402	12			
1	D	263	Total	C	N	O	S	0	0	0
			2076	1323	343	398	12			

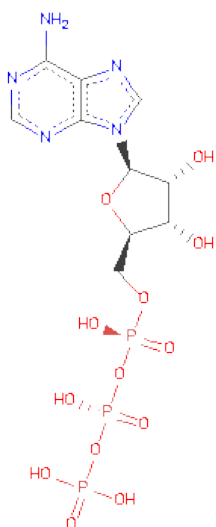
There are 4 discrepancies between the modelled and reference sequences:

Chain	Residue	Modelled	Actual	Comment	Reference
A	388	SER	-	CLONING ARTIFACT	UNP P26361
B	388	SER	-	CLONING ARTIFACT	UNP P26361
C	388	SER	-	CLONING ARTIFACT	UNP P26361
D	388	SER	-	CLONING ARTIFACT	UNP P26361

- Molecule 2 is MAGNESIUM ION (three-letter code: MG) (formula: Mg).

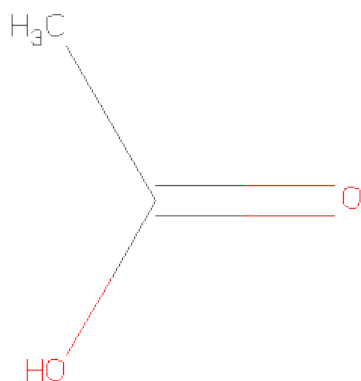
Mol	Chain	Residues	Atoms		ZeroOcc	AltConf
2	B	1	Total	Mg	0	0
			1	1		
2	A	1	Total	Mg	0	0
			1	1		
2	D	1	Total	Mg	0	0
			1	1		
2	C	1	Total	Mg	0	0
			1	1		

- Molecule 3 is ADENOSINE-5'-TRIPHOSPHATE (three-letter code: ATP) (formula: C₁₀H₁₆N₅O₁₃P₃).



Mol	Chain	Residues	Atoms					ZeroOcc	AltConf
3	A	1	Total	C	N	O	P	0	0
			31	10	5	13	3		
3	B	1	Total	C	N	O	P	0	0
			31	10	5	13	3		
3	C	1	Total	C	N	O	P	0	0
			31	10	5	13	3		
3	D	1	Total	C	N	O	P	0	0
			31	10	5	13	3		

- Molecule 4 is ACETIC ACID (three-letter code: ACY) (formula: C₂H₄O₂).



Mol	Chain	Residues	Atoms	ZeroOcc	AltConf
4	A	1	Total C O 4 2 2	0	0
4	B	1	Total C O 4 2 2	0	0
4	C	1	Total C O 4 2 2	0	0
4	D	1	Total C O 4 2 2	0	0
4	D	1	Total C O 4 2 2	0	0
4	A	1	Total C O 4 2 2	0	0

- Molecule 5 is water.

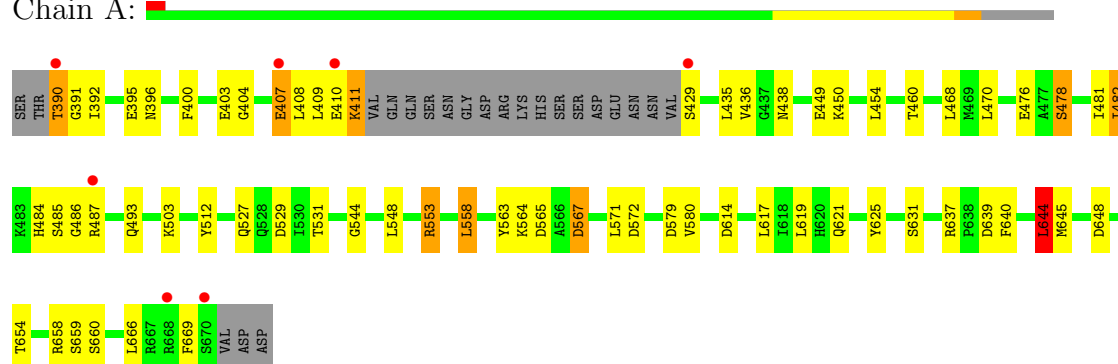
Mol	Chain	Residues	Atoms	ZeroOcc	AltConf
5	A	95	Total O 95 95	0	0
5	B	96	Total O 96 96	0	0
5	C	105	Total O 105 105	0	0
5	D	68	Total O 68 68	0	0

3 Residue-property plots

These plots are drawn for all protein, RNA and DNA chains in the entry. The first graphic for a chain summarises the proportions of errors displayed in the second graphic. The second graphic shows the sequence view annotated by issues in geometry and electron density. Residues are color-coded according to the number of geometric quality criteria for which they contain at least one outlier: green = 0, yellow = 1, orange = 2 and red = 3 or more. A red dot above a residue indicates a poor fit to the electron density ($RSRZ > 2$). Stretches of 2 or more consecutive residues without any outlier are shown as a green connector. Residues present in the sample, but not in the model, are shown in grey.

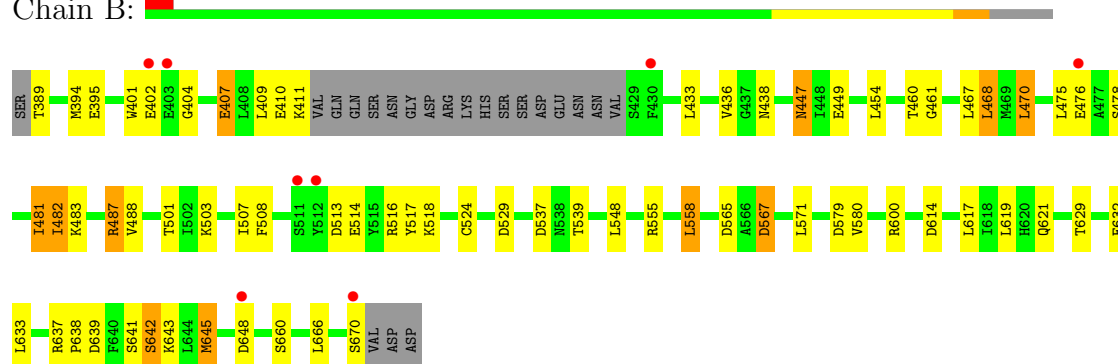
- Molecule 1: Cystic fibrosis transmembrane conductance regulator

Chain A:



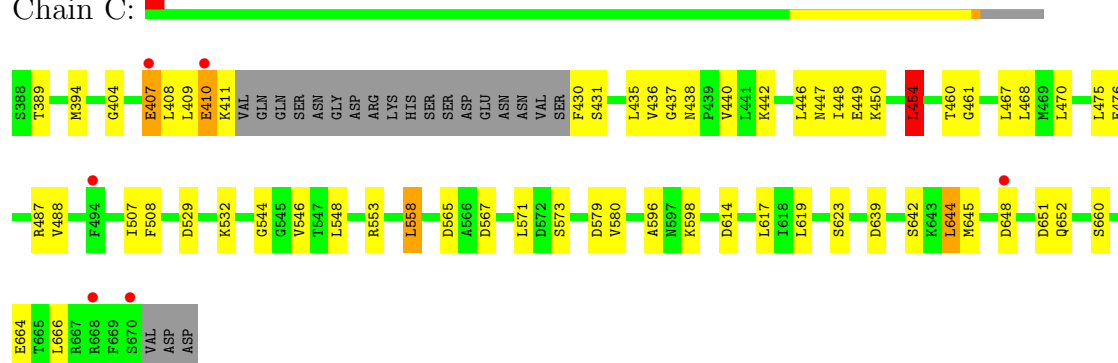
- Molecule 1: Cystic fibrosis transmembrane conductance regulator

Chain B:



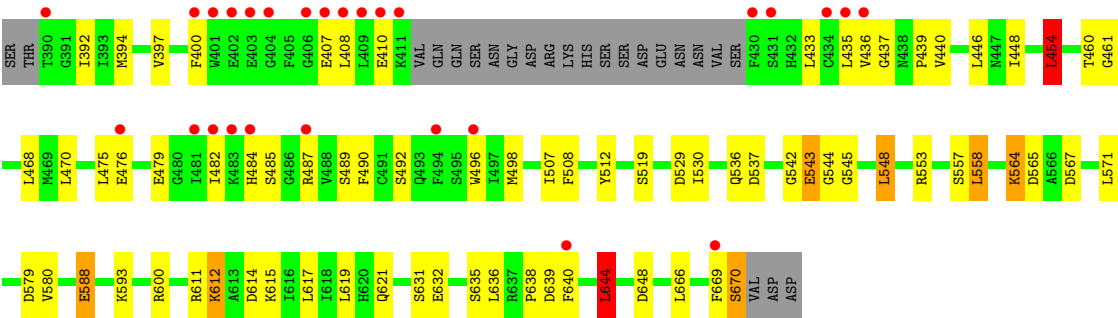
- Molecule 1: Cystic fibrosis transmembrane conductance regulator

Chain C:



● Molecule 1: Cystic fibrosis transmembrane conductance regulator

Chain D: 



4 Data and refinement statistics

Property	Value	Source
Space group	P 4 21 2	Depositor
Cell constants a, b, c, α , β , γ	173.29Å 173.29Å 110.46Å 90.00° 90.00° 90.00°	Depositor
Resolution (Å)	39.20 – 2.20 39.28 – 2.20	Depositor EDS
% Data completeness (in resolution range)	(Not available) (39.20-2.20) 98.5 (39.28-2.20)	Depositor EDS
R_{merge}	(Not available)	Depositor
R_{sym}	0.07	Depositor
$\langle I/\sigma(I) \rangle$ ¹	2.11 (at 2.20Å)	Xtriage
Refinement program	REFMAC	Depositor
R, R_{free}	0.211 , 0.266 0.210 , 0.250	Depositor DCC
R_{free} test set	4208 reflections (5.27%)	DCC
Wilson B-factor (Å ²)	37.9	Xtriage
Anisotropy	0.117	Xtriage
Bulk solvent k_{sol} (e/Å ³), B_{sol} (Å ²)	0.38 , 40.6	EDS
Estimated twinning fraction	No twinning to report.	Xtriage
L-test for twinning	$\langle L \rangle = 0.50$, $\langle L^2 \rangle = 0.33$	Xtriage
Outliers	0 of 85406 reflections	Xtriage
F_o, F_c correlation	0.94	EDS
Total number of atoms	8852	wwPDB-VP
Average B, all atoms (Å ²)	39.0	wwPDB-VP

Xtriage's analysis on translational NCS is as follows: *The largest off-origin peak in the Patterson function is 3.50% of the height of the origin peak. No significant pseudotranslation is detected.*

¹Intensities estimated from amplitudes.

5 Model quality

5.1 Standard geometry

Bond lengths and bond angles in the following residue types are not validated in this section: MG, ACY, ATP

The Z score for a bond length (or angle) is the number of standard deviations the observed value is removed from the expected value. A bond length (or angle) with $|Z| > 5$ is considered an outlier worth inspection. RMSZ is the root-mean-square of all Z scores of the bond lengths (or angles).

Mol	Chain	Bond lengths		Bond angles	
		RMSZ	# $ Z > 5$	RMSZ	# $ Z > 5$
1	A	0.82	1/2117 (0.0%)	0.93	10/2846 (0.4%)
1	B	0.81	0/2124	0.95	12/2856 (0.4%)
1	C	0.84	0/2124	0.97	13/2856 (0.5%)
1	D	0.71	0/2111	0.89	10/2838 (0.4%)
All	All	0.80	1/8476 (0.0%)	0.93	45/11396 (0.4%)

All (1) bond length outliers are listed below:

Mol	Chain	Res	Type	Atoms	Z	Observed(Å)	Ideal(Å)
1	A	563	TYR	CE2-CZ	5.29	1.45	1.38

All (45) bond angle outliers are listed below:

Mol	Chain	Res	Type	Atoms	Z	Observed(°)	Ideal(°)
1	A	565	ASP	CB-CG-OD2	7.87	125.39	118.30
1	B	513	ASP	CB-CG-OD2	7.28	124.85	118.30
1	A	614	ASP	CB-CG-OD2	7.10	124.69	118.30
1	C	579	ASP	CB-CG-OD2	6.93	124.54	118.30
1	C	651	ASP	CB-CG-OD2	6.92	124.53	118.30
1	B	579	ASP	CB-CG-OD2	6.77	124.40	118.30
1	C	639	ASP	CB-CG-OD2	6.76	124.38	118.30
1	D	579	ASP	CB-CG-OD2	6.75	124.38	118.30
1	B	614	ASP	CB-CG-OD2	6.67	124.30	118.30
1	C	614	ASP	CB-CG-OD2	6.61	124.25	118.30
1	D	558	LEU	CB-CG-CD2	6.57	122.17	111.00
1	C	567	ASP	CB-CG-OD2	6.57	124.21	118.30
1	B	558	LEU	CB-CG-CD2	6.50	122.04	111.00
1	D	644	LEU	CA-CB-CG	-6.50	100.36	115.30
1	D	529	ASP	CB-CG-OD2	6.48	124.13	118.30
1	B	537	ASP	CB-CG-OD2	6.38	124.04	118.30

Continued on next page...

Continued from previous page...

Mol	Chain	Res	Type	Atoms	Z	Observed(°)	Ideal(°)
1	B	529	ASP	CB-CG-OD2	6.32	123.99	118.30
1	A	644	LEU	CA-CB-CG	-6.31	100.79	115.30
1	C	644	LEU	CA-CB-CG	-6.18	101.09	115.30
1	B	567	ASP	CB-CG-OD2	6.12	123.81	118.30
1	C	565	ASP	CB-CG-OD2	5.90	123.61	118.30
1	A	470	LEU	CA-CB-CG	5.83	128.72	115.30
1	A	572	ASP	CB-CG-OD2	5.83	123.55	118.30
1	D	565	ASP	CB-CG-OD2	5.78	123.50	118.30
1	D	648	ASP	CB-CG-OD2	5.76	123.48	118.30
1	B	648	ASP	CB-CG-OD2	5.76	123.48	118.30
1	B	470	LEU	CA-CB-CG	5.75	128.52	115.30
1	C	558	LEU	CB-CG-CD2	5.72	120.73	111.00
1	C	529	ASP	CB-CG-OD2	5.70	123.43	118.30
1	C	470	LEU	CA-CB-CG	5.64	128.28	115.30
1	A	567	ASP	CB-CG-OD2	5.62	123.36	118.30
1	D	614	ASP	CB-CG-OD2	5.55	123.29	118.30
1	C	558	LEU	CA-CB-CG	5.50	127.96	115.30
1	C	648	ASP	CB-CG-OD2	5.48	123.23	118.30
1	A	553	ARG	NE-CZ-NH2	-5.41	117.59	120.30
1	B	600	ARG	NE-CZ-NH1	5.39	123.00	120.30
1	B	639	ASP	CB-CG-OD2	5.27	123.05	118.30
1	D	567	ASP	CB-CG-OD2	5.27	123.04	118.30
1	D	454	LEU	CA-CB-CG	5.22	127.32	115.30
1	C	454	LEU	CA-CB-CG	5.21	127.29	115.30
1	A	558	LEU	CA-CB-CG	5.21	127.28	115.30
1	A	579	ASP	CB-CG-OD2	5.10	122.89	118.30
1	A	529	ASP	CB-CG-OD2	5.08	122.87	118.30
1	D	558	LEU	CA-CB-CG	5.07	126.95	115.30
1	B	468	LEU	CB-CG-CD1	5.06	119.60	111.00

There are no chirality outliers.

There are no planarity outliers.

5.2 Close contacts ⓘ

In the following table, the Non-H and H(model) columns list the number of non-hydrogen atoms and hydrogen atoms in the chain respectively. The H(added) column lists the number of hydrogens added by MolProbity. The Clashes column lists the number of clashes within the asymmetric unit, and the number in parentheses is this value normalized per 1000 atoms of the molecule in the chain. The Symm-Clashes column gives symmetry related clashes, in the same way as for the Clashes column.

Mol	Chain	Non-H	H(model)	H(added)	Clashes	Symm-Clashes
1	A	2082	0	2078	26	0
1	B	2089	0	2085	41	0
1	C	2089	0	2086	33	0
1	D	2076	0	2074	32	0
2	A	1	0	0	0	0
2	B	1	0	0	0	0
2	C	1	0	0	0	0
2	D	1	0	0	0	0
3	A	31	0	12	2	0
3	B	31	0	12	1	0
3	C	31	0	12	1	0
3	D	31	0	12	1	0
4	A	8	0	6	0	0
4	B	4	0	3	0	0
4	C	4	0	3	0	0
4	D	8	0	6	2	0
5	A	95	0	0	2	0
5	B	96	0	0	2	0
5	C	105	0	0	7	0
5	D	68	0	0	3	0
All	All	8852	0	8389	132	0

Clashscore is defined as the number of clashes calculated for the entry per 1000 atoms (including hydrogens) of the entry. The overall clashscore for this entry is 8.

All (132) close contacts within the same asymmetric unit are listed below.

Atom-1	Atom-2	Distance(Å)	Clash(Å)
1:C:467:LEU:HG	5:C:282:HOH:O	1.26	1.35
4:D:9:ACY:H1	5:D:318:HOH:O	1.69	0.93
1:C:436:VAL:HB	1:C:438:ASN:HD21	1.32	0.92
1:A:527:GLN:HB2	5:A:189:HOH:O	1.77	0.85
1:C:389:THR:HG21	1:C:598:LYS:HA	1.60	0.81
1:C:580:VAL:CG2	5:C:245:HOH:O	2.31	0.78
1:B:487:ARG:NH2	1:B:567:ASP:OD1	2.17	0.77
1:D:496:TRP:HH2	1:D:508:PHE:CZ	2.03	0.76
1:C:436:VAL:HB	1:C:438:ASN:ND2	2.05	0.72
1:C:440:VAL:HG11	1:C:475:LEU:HD21	1.69	0.72
1:D:397:VAL:HG11	1:D:470:LEU:HD21	1.71	0.70
1:D:496:TRP:CH2	1:D:508:PHE:CZ	2.79	0.70
1:B:436:VAL:HB	1:B:438:ASN:HD21	1.55	0.70
1:D:400:PHE:HA	1:D:439:PRO:HA	1.73	0.70
1:B:487:ARG:NH2	1:B:567:ASP:CG	2.45	0.70
1:A:395:GLU:HB2	1:A:481:ILE:HB	1.74	0.68

Continued on next page...

Continued from previous page...

Atom-1	Atom-2	Distance(Å)	Clash(Å)
1:D:437:GLY:HA2	5:D:374:HOH:O	1.94	0.67
1:B:516:ARG:HH11	1:B:516:ARG:HG3	1.61	0.66
1:B:629:THR:OG1	1:B:632:GLU:HG3	1.95	0.65
1:A:482:ILE:HD11	1:A:484:HIS:HD2	1.61	0.63
1:C:580:VAL:HG23	5:C:245:HOH:O	1.96	0.63
1:C:404:GLY:HA2	1:C:407:GLU:HG2	1.81	0.62
1:D:487:ARG:HH21	1:D:487:ARG:HG3	1.64	0.62
1:A:390:THR:HA	1:A:450:LYS:NZ	2.15	0.61
1:C:430:PHE:N	5:C:258:HOH:O	2.33	0.61
1:B:476:GLU:HG2	5:B:93:HOH:O	2.00	0.61
1:A:544:GLY:O	1:A:553:ARG:HD3	2.00	0.61
1:D:588:GLU:HG2	5:D:355:HOH:O	2.00	0.61
1:C:389:THR:O	1:C:450:LYS:HE3	2.01	0.60
5:A:62:HOH:O	1:B:621:GLN:HG2	2.01	0.60
1:B:476:GLU:H	1:B:476:GLU:CD	2.02	0.59
1:B:404:GLY:O	1:B:407:GLU:HG2	2.04	0.58
1:A:482:ILE:HD11	1:A:484:HIS:CD2	2.38	0.57
1:A:436:VAL:CG1	1:A:438:ASN:HD21	2.18	0.57
1:A:390:THR:HG21	1:A:485:SER:H	1.68	0.57
1:D:448:ILE:HD13	1:D:615:LYS:HD2	1.87	0.57
1:C:409:LEU:C	1:C:411:LYS:H	2.07	0.56
1:A:409:LEU:HD13	3:A:1:ATP:C8	2.41	0.56
1:A:390:THR:HG23	1:A:391:GLY:O	2.06	0.55
1:B:404:GLY:HA2	1:B:407:GLU:HG2	1.88	0.55
1:B:461:GLY:O	3:B:2:ATP:H3'	2.08	0.54
1:D:436:VAL:O	1:D:436:VAL:HG12	2.08	0.53
1:B:516:ARG:NH1	1:B:516:ARG:HG3	2.20	0.53
1:B:395:GLU:HB2	1:B:481:ILE:HG23	1.90	0.53
1:B:487:ARG:HG3	1:B:487:ARG:NH2	2.24	0.53
1:D:635:SER:O	1:D:638:PRO:HD3	2.09	0.53
1:A:436:VAL:HG12	1:A:438:ASN:HD21	1.73	0.52
1:C:394:MET:HB2	1:C:446:LEU:HG	1.90	0.52
1:D:543:GLU:HG3	1:D:544:GLY:N	2.24	0.52
1:D:640:PHE:CE2	1:D:644:LEU:HD13	2.45	0.52
1:C:436:VAL:O	1:C:436:VAL:HG12	2.10	0.52
1:B:436:VAL:HB	1:B:438:ASN:ND2	2.25	0.52
1:C:448:ILE:HD11	1:C:454:LEU:HG	1.92	0.51
1:B:409:LEU:C	1:B:411:LYS:H	2.13	0.51
1:C:404:GLY:HA2	1:C:407:GLU:CG	2.40	0.51
1:C:461:GLY:O	3:C:3:ATP:H3'	2.11	0.51
1:D:507:ILE:CD1	1:D:512:TYR:HD1	2.24	0.51
1:A:436:VAL:HG12	1:A:438:ASN:ND2	2.25	0.51

Continued on next page...

Continued from previous page...

Atom-1	Atom-2	Distance(Å)	Clash(Å)
1:B:487:ARG:HG3	1:B:487:ARG:HH21	1.76	0.50
1:A:409:LEU:C	1:A:411:LYS:H	2.14	0.50
1:B:638:PRO:O	1:B:642:SER:HB3	2.11	0.50
1:A:503:LYS:NZ	1:A:512:TYR:CE1	2.80	0.50
1:D:542:GLY:N	4:D:8:ACY:OXT	2.39	0.50
1:C:404:GLY:O	1:C:407:GLU:HG2	2.12	0.50
1:B:633:LEU:HD12	1:B:637:ARG:HB2	1.93	0.50
1:C:596:ALA:O	5:C:295:HOH:O	2.19	0.50
1:B:394:MET:CE	1:B:467:LEU:HD11	2.42	0.50
1:B:487:ARG:HH11	1:B:565:ASP:CG	2.14	0.50
1:D:394:MET:HB2	1:D:446:LEU:HG	1.93	0.50
1:C:404:GLY:CA	1:C:407:GLU:HG2	2.42	0.50
1:B:447:ASN:HD22	1:B:447:ASN:C	2.15	0.50
1:C:448:ILE:CD1	1:C:454:LEU:HG	2.42	0.49
1:A:639:ASP:HB3	1:A:669:PHE:CE1	2.47	0.49
1:C:440:VAL:HG11	1:C:475:LEU:CD2	2.38	0.49
1:C:440:VAL:CG1	1:C:475:LEU:HD21	2.39	0.49
1:D:507:ILE:HD13	1:D:512:TYR:HD1	1.78	0.49
1:A:654:THR:O	1:A:658:ARG:HG3	2.13	0.49
1:A:476:GLU:CD	1:A:476:GLU:H	2.15	0.49
1:C:409:LEU:O	1:C:411:LYS:N	2.46	0.48
1:B:507:ILE:HD11	1:B:517:TYR:CD1	2.48	0.48
1:B:487:ARG:CG	1:B:567:ASP:OD2	2.62	0.48
1:D:639:ASP:HB3	1:D:669:PHE:CD1	2.48	0.48
1:D:490:PHE:CE2	1:D:492:SER:HB3	2.48	0.48
1:A:436:VAL:HB	1:A:438:ASN:HD21	1.79	0.48
1:B:470:LEU:HD12	1:B:475:LEU:O	2.14	0.47
1:B:389:THR:N	1:B:567:ASP:OD1	2.48	0.47
1:D:448:ILE:CD1	1:D:615:LYS:HD2	2.43	0.47
1:B:482:ILE:HD11	5:B:198:HOH:O	2.13	0.47
1:D:545:GLY:O	1:D:548:LEU:HB2	2.14	0.47
1:B:487:ARG:HG3	1:B:567:ASP:OD2	2.15	0.46
1:C:409:LEU:C	1:C:411:LYS:N	2.68	0.46
1:A:486:GLY:HA3	1:A:567:ASP:OD2	2.16	0.46
1:B:487:ARG:HH21	1:B:487:ARG:CG	2.29	0.46
1:D:507:ILE:CD1	1:D:512:TYR:CD1	2.98	0.46
1:A:487:ARG:HG3	1:A:487:ARG:HH21	1.80	0.46
1:C:437:GLY:HA2	5:C:262:HOH:O	2.16	0.45
1:A:400:PHE:HD2	1:A:478:SER:HG	1.64	0.45
1:D:440:VAL:HG11	1:D:475:LEU:HD21	1.99	0.45
1:A:390:THR:HA	1:A:450:LYS:HZ3	1.79	0.45
1:C:430:PHE:CA	5:C:258:HOH:O	2.65	0.45

Continued on next page...

Continued from previous page...

Atom-1	Atom-2	Distance(Å)	Clash(Å)
1:B:501:THR:HA	1:B:539:THR:O	2.17	0.45
1:D:489:SER:HB2	1:D:564:LYS:HD2	1.99	0.45
1:B:503:LYS:HD2	1:B:517:TYR:CZ	2.52	0.44
1:C:404:GLY:C	1:C:407:GLU:HG2	2.37	0.44
1:C:580:VAL:HG21	1:C:652:GLN:HG2	2.00	0.44
1:C:475:LEU:HD12	1:C:476:GLU:OE1	2.17	0.44
1:D:496:TRP:HH2	1:D:508:PHE:CE2	2.35	0.44
1:D:530:ILE:O	1:D:536:GLN:HA	2.17	0.44
1:A:640:PHE:CZ	1:A:644:LEU:HD13	2.52	0.44
1:B:514:GLU:O	1:B:518:LYS:HG3	2.18	0.43
1:B:401:TRP:CE2	1:B:433:LEU:HD13	2.54	0.43
1:C:436:VAL:CB	1:C:438:ASN:HD21	2.15	0.43
1:D:588:GLU:OE2	1:D:593:LYS:NZ	2.48	0.43
1:D:448:ILE:HD11	1:D:454:LEU:HG	2.01	0.43
1:D:612:LYS:HD2	1:D:612:LYS:HA	1.72	0.43
1:B:436:VAL:CB	1:B:438:ASN:HD21	2.29	0.42
1:A:404:GLY:HA2	1:A:407:GLU:HG2	2.00	0.42
1:D:461:GLY:O	3:D:4:ATP:H2'	2.20	0.42
1:D:487:ARG:HG3	1:D:487:ARG:NH2	2.32	0.42
1:D:544:GLY:O	1:D:553:ARG:HD3	2.20	0.42
1:B:507:ILE:O	1:B:508:PHE:C	2.58	0.42
1:A:625:TYR:CE1	1:A:637:ARG:HD2	2.55	0.42
1:B:524:CYS:O	1:B:555:ARG:HD2	2.20	0.41
1:B:641:SER:O	1:B:645:MET:HB2	2.21	0.41
1:B:404:GLY:HA2	1:B:407:GLU:CG	2.49	0.41
1:C:544:GLY:O	1:C:553:ARG:HD3	2.19	0.41
1:B:389:THR:HG22	1:C:449:GLU:HG3	2.03	0.41
1:B:487:ARG:HH21	1:B:567:ASP:CG	2.13	0.41
1:A:409:LEU:HD13	3:A:1:ATP:H8	1.83	0.41
1:B:394:MET:HE3	1:B:467:LEU:HD11	2.03	0.40
1:D:669:PHE:O	1:D:670:SER:HB2	2.21	0.40
1:C:394:MET:CE	1:C:467:LEU:HD11	2.51	0.40

There are no symmetry-related clashes.

5.3 Torsion angles

5.3.1 Protein backbone ⓘ

In the following table, the Percentiles column shows the percent Ramachandran outliers of the chain as a percentile score with respect to all X-ray entries followed by that with respect to entries

of similar resolution. The Analysed column shows the number of residues for which the backbone conformation was analysed, and the total number of residues.

Mol	Chain	Analysed	Favoured	Allowed	Outliers	Percentiles	
1	A	260/286 (91%)	251 (96%)	8 (3%)	1 (0%)	43	45
1	B	261/286 (91%)	252 (97%)	8 (3%)	1 (0%)	43	45
1	C	261/286 (91%)	249 (95%)	10 (4%)	2 (1%)	27	24
1	D	259/286 (91%)	245 (95%)	14 (5%)	0	100	100
All	All	1041/1144 (91%)	997 (96%)	40 (4%)	4 (0%)	43	45

All (4) Ramachandran outliers are listed below:

Mol	Chain	Res	Type
1	C	410	GLU
1	C	508	PHE
1	A	410	GLU
1	B	410	GLU

5.3.2 Protein sidechains ⓘ

In the following table, the Percentiles column shows the percent sidechain outliers of the chain as a percentile score with respect to all X-ray entries followed by that with respect to entries of similar resolution. The Analysed column shows the number of residues for which the sidechain conformation was analysed, and the total number of residues.

Mol	Chain	Analysed	Rotameric	Outliers	Percentiles	
1	A	231/252 (92%)	199 (86%)	32 (14%)	5	4
1	B	232/252 (92%)	207 (89%)	25 (11%)	9	8
1	C	232/252 (92%)	204 (88%)	28 (12%)	7	6
1	D	230/252 (91%)	193 (84%)	37 (16%)	3	2
All	All	925/1008 (92%)	803 (87%)	122 (13%)	6	4

All (122) residues with a non-rotameric sidechain are listed below:

Mol	Chain	Res	Type
1	A	390	THR
1	A	392	ILE
1	A	396	ASN
1	A	403	GLU
1	A	407	GLU

Continued on next page...

Continued from previous page...

Mol	Chain	Res	Type
1	A	408	LEU
1	A	411	LYS
1	A	429	SER
1	A	435	LEU
1	A	449	GLU
1	A	454	LEU
1	A	460	THR
1	A	468	LEU
1	A	478	SER
1	A	482	ILE
1	A	493	GLN
1	A	531	THR
1	A	548	LEU
1	A	558	LEU
1	A	564	LYS
1	A	571	LEU
1	A	580	VAL
1	A	617	LEU
1	A	619	LEU
1	A	621	GLN
1	A	631	SER
1	A	644	LEU
1	A	645	MET
1	A	648	ASP
1	A	659	SER
1	A	660	SER
1	A	666	LEU
1	B	402	GLU
1	B	407	GLU
1	B	447	ASN
1	B	449	GLU
1	B	454	LEU
1	B	460	THR
1	B	468	LEU
1	B	478	SER
1	B	481	ILE
1	B	482	ILE
1	B	483	LYS
1	B	487	ARG
1	B	488	VAL
1	B	548	LEU
1	B	558	LEU

Continued on next page...

Continued from previous page...

Mol	Chain	Res	Type
1	B	571	LEU
1	B	580	VAL
1	B	617	LEU
1	B	619	LEU
1	B	642	SER
1	B	643	LYS
1	B	645	MET
1	B	660	SER
1	B	666	LEU
1	B	670	SER
1	C	407	GLU
1	C	408	LEU
1	C	410	GLU
1	C	431	SER
1	C	435	LEU
1	C	442	LYS
1	C	447	ASN
1	C	454	LEU
1	C	460	THR
1	C	468	LEU
1	C	487	ARG
1	C	488	VAL
1	C	507	ILE
1	C	532	LYS
1	C	546	VAL
1	C	548	LEU
1	C	558	LEU
1	C	571	LEU
1	C	573	SER
1	C	617	LEU
1	C	619	LEU
1	C	623	SER
1	C	642	SER
1	C	644	LEU
1	C	645	MET
1	C	660	SER
1	C	664	GLU
1	C	666	LEU
1	D	392	ILE
1	D	407	GLU
1	D	408	LEU
1	D	410	GLU

Continued on next page...

Continued from previous page...

Mol	Chain	Res	Type
1	D	433	LEU
1	D	435	LEU
1	D	454	LEU
1	D	460	THR
1	D	468	LEU
1	D	476	GLU
1	D	479	GLU
1	D	482	ILE
1	D	484	HIS
1	D	485	SER
1	D	498	MET
1	D	519	SER
1	D	537	ASP
1	D	543	GLU
1	D	548	LEU
1	D	557	SER
1	D	558	LEU
1	D	564	LYS
1	D	571	LEU
1	D	580	VAL
1	D	588	GLU
1	D	600	ARG
1	D	611	ARG
1	D	612	LYS
1	D	617	LEU
1	D	619	LEU
1	D	621	GLN
1	D	631	SER
1	D	632	GLU
1	D	636	LEU
1	D	644	LEU
1	D	666	LEU
1	D	670	SER

Some sidechains can be flipped to improve hydrogen bonding and reduce clashes. All (11) such sidechains are listed below:

Mol	Chain	Res	Type
1	A	438	ASN
1	A	484	HIS
1	A	538	ASN
1	B	438	ASN
1	B	447	ASN

Continued on next page...

Continued from previous page...

Mol	Chain	Res	Type
1	B	538	ASN
1	C	438	ASN
1	C	447	ASN
1	C	538	ASN
1	D	438	ASN
1	D	538	ASN

5.3.3 RNA ⓘ

There are no RNA chains in this entry.

5.4 Non-standard residues in protein, DNA, RNA chains ⓘ

There are no non-standard protein/DNA/RNA residues in this entry.

5.5 Carbohydrates ⓘ

There are no carbohydrates in this entry.

5.6 Ligand geometry ⓘ

Of 14 ligands modelled in this entry, 4 are monoatomic - leaving 10 for Mogul analysis.

In the following table, the Counts columns list the number of bonds (or angles) for which Mogul statistics could be retrieved, the number of bonds (or angles) that are observed in the model and the number of bonds (or angles) that are defined in the chemical component dictionary. The Link column lists molecule types, if any, to which the group is linked. The Z score for a bond length (or angle) is the number of standard deviations the observed value is removed from the expected value. A bond length (or angle) with $|Z| > 2$ is considered an outlier worth inspection. RMSZ is the root-mean-square of all Z scores of the bond lengths (or angles).

Mol	Type	Chain	Res	Link	Bond lengths			Bond angles		
					Counts	RMSZ	$\# Z > 2$	Counts	RMSZ	$\# Z > 2$
3	ATP	A	1	2	33,33,33	1.06	2 (6%)	52,52,52	2.03	10 (19%)
4	ACY	A	10	-	3,3,3	0.77	0	3,3,3	0.74	0
4	ACY	A	5	-	3,3,3	0.69	0	3,3,3	0.75	0
3	ATP	B	2	2	33,33,33	0.94	2 (6%)	52,52,52	1.88	8 (15%)
4	ACY	B	6	-	3,3,3	0.82	0	3,3,3	0.49	0
3	ATP	C	3	2	33,33,33	1.03	2 (6%)	52,52,52	1.92	6 (11%)
4	ACY	C	7	-	3,3,3	0.60	0	3,3,3	0.71	0

Mol	Type	Chain	Res	Link	Bond lengths			Bond angles		
					Counts	RMSZ	# Z > 2	Counts	RMSZ	# Z > 2
3	ATP	D	4	2	33,33,33	1.06	2 (6%)	52,52,52	2.03	8 (15%)
4	ACY	D	8	-	3,3,3	0.71	0	3,3,3	0.54	0
4	ACY	D	9	-	3,3,3	0.36	0	3,3,3	1.24	0

In the following table, the Chirals column lists the number of chiral outliers, the number of chiral centers analysed, the number of these observed in the model and the number defined in the chemical component dictionary. Similar counts are reported in the Torsion and Rings columns. '-' means no outliers of that kind were identified.

Mol	Type	Chain	Res	Link	Chirals	Torsions	Rings
3	ATP	A	1	2	-	0/22/38/38	0/1/3/3
4	ACY	A	10	-	-	0/0/0/0	0/0/0/0
4	ACY	A	5	-	-	0/0/0/0	0/0/0/0
3	ATP	B	2	2	-	0/22/38/38	0/1/3/3
4	ACY	B	6	-	-	0/0/0/0	0/0/0/0
3	ATP	C	3	2	-	0/22/38/38	0/1/3/3
4	ACY	C	7	-	-	0/0/0/0	0/0/0/0
3	ATP	D	4	2	-	0/22/38/38	0/1/3/3
4	ACY	D	8	-	-	0/0/0/0	0/0/0/0
4	ACY	D	9	-	-	0/0/0/0	0/0/0/0

All (8) bond length outliers are listed below:

Mol	Chain	Res	Type	Atoms	Z	Observed(Å)	Ideal(Å)
3	D	4	ATP	C2-N3	3.73	1.39	1.32
3	A	1	ATP	C2-N3	3.42	1.38	1.32
3	C	3	ATP	C2-N3	3.07	1.38	1.32
3	B	2	ATP	C2-N3	2.99	1.38	1.32
3	D	4	ATP	C2-N1	2.84	1.39	1.33
3	C	3	ATP	C2-N1	2.69	1.39	1.33
3	A	1	ATP	C2-N1	2.59	1.39	1.33
3	B	2	ATP	C2-N1	2.24	1.38	1.33

All (32) bond angle outliers are listed below:

Mol	Chain	Res	Type	Atoms	Z	Observed(°)	Ideal(°)
3	C	3	ATP	N3-C2-N1	-11.07	119.45	128.71
3	B	2	ATP	N3-C2-N1	-10.40	120.02	128.71
3	D	4	ATP	N3-C2-N1	-10.01	120.34	128.71
3	A	1	ATP	N3-C2-N1	-9.11	121.09	128.71
3	A	1	ATP	O4'-C1'-N9	5.01	113.10	108.44
3	A	1	ATP	N3-C4-N9	4.38	133.34	125.43

Continued on next page...

Continued from previous page...

Mol	Chain	Res	Type	Atoms	Z	Observed(°)	Ideal(°)
3	D	4	ATP	O4'-C1'-N9	4.38	112.52	108.44
3	D	4	ATP	N3-C4-N9	4.31	133.21	125.43
3	B	2	ATP	N3-C4-N9	3.72	132.15	125.43
3	C	3	ATP	N3-C4-N9	3.70	132.10	125.43
3	D	4	ATP	PB-O3B-PG	-3.69	120.86	131.68
3	C	3	ATP	PA-O3A-PB	-3.51	121.39	131.68
3	A	1	ATP	O2'-C2'-C1'	-3.09	101.88	111.23
3	A	1	ATP	C4'-O4'-C1'	3.04	113.05	109.75
3	D	4	ATP	C3'-C2'-C1'	2.87	105.40	100.91
3	A	1	ATP	C3'-C2'-C1'	2.84	105.36	100.91
3	A	1	ATP	C5-C4-N3	-2.77	119.67	125.70
3	D	4	ATP	C5-C4-N3	-2.65	119.92	125.70
3	A	1	ATP	PA-O3A-PB	-2.47	124.44	131.68
3	C	3	ATP	O3A-PB-O3B	2.45	106.65	101.66
3	D	4	ATP	PA-O3A-PB	-2.45	124.51	131.68
3	B	2	ATP	C5-C4-N3	-2.41	120.45	125.70
3	B	2	ATP	C2-N3-C4	2.31	120.58	114.01
3	D	4	ATP	C2-N3-C4	2.20	120.26	114.01
3	C	3	ATP	C2-N3-C4	2.19	120.25	114.01
3	C	3	ATP	C5-C4-N3	-2.18	120.95	125.70
3	B	2	ATP	PA-O3A-PB	-2.16	125.35	131.68
3	A	1	ATP	C2-N3-C4	2.09	119.96	114.01
3	B	2	ATP	O2B-PB-O3A	2.08	115.02	105.14
3	B	2	ATP	PB-O3B-PG	-2.07	125.60	131.68
3	A	1	ATP	PB-O3B-PG	-2.05	125.66	131.68
3	B	2	ATP	O3A-PB-O3B	-2.00	97.59	101.66

There are no chirality outliers.

There are no torsion outliers.

There are no ring outliers.

5.7 Other polymers ⓘ

There are no such residues in this entry.

5.8 Polymer linkage issues

There are no chain breaks in this entry.

6 Fit of model and data ⓘ

6.1 Protein, DNA and RNA chains ⓘ

In the following table, the column labelled ‘#RSRZ > 2’ contains the number (and percentage) of RSRZ outliers, followed by percent RSRZ outliers for the chain as percentile scores relative to all X-ray entries and entries of similar resolution. The OWAB column contains the minimum, median, 95th percentile and maximum values of the occupancy-weighted average B-factor per residue. The column labelled ‘Q < 0.9’ lists the number of (and percentage) of residues with an average occupancy less than 0.9.

Mol	Chain	Analysed	<RSRZ>	#RSRZ>2	OWAB(Å ²)	Q<0.9
1	A	264/286 (92%)	-0.19	7 (2%) 52 52	19, 35, 55, 65	0
1	B	265/286 (92%)	-0.05	8 (3%) 48 48	20, 35, 56, 64	0
1	C	265/286 (92%)	-0.22	6 (2%) 57 58	19, 33, 53, 67	0
1	D	263/286 (91%)	0.30	27 (10%) 7 6	22, 44, 84, 91	0
All	All	1057/1144 (92%)	-0.04	48 (4%) 32 32	19, 35, 64, 91	0

All (48) RSRZ outliers are listed below:

Mol	Chain	Res	Type	RSRZ
1	D	430	PHE	8.1
1	A	390	THR	5.6
1	B	648	ASP	5.2
1	D	403	GLU	4.9
1	D	401	TRP	4.9
1	D	408	LEU	4.8
1	D	407	GLU	4.7
1	D	404	GLY	4.6
1	D	481	ILE	4.5
1	D	410	GLU	4.3
1	C	670	SER	4.0
1	D	431	SER	4.0
1	D	482	ILE	3.8
1	B	670	SER	3.7
1	B	403	GLU	3.4
1	D	406	GLY	3.2
1	C	410	GLU	3.2
1	D	476	GLU	3.1
1	A	487	ARG	3.0
1	D	487	ARG	2.9
1	A	668	ARG	2.9

Continued on next page...

Continued from previous page...

Mol	Chain	Res	Type	RSRZ
1	D	411	LYS	2.9
1	D	435	LEU	2.8
1	C	668	ARG	2.8
1	D	496	TRP	2.7
1	D	484	HIS	2.6
1	D	390	THR	2.6
1	A	429	SER	2.6
1	D	400	PHE	2.6
1	B	402	GLU	2.5
1	B	430	PHE	2.5
1	A	410	GLU	2.5
1	D	434	CYS	2.5
1	A	670	SER	2.4
1	B	511	SER	2.4
1	D	402	GLU	2.4
1	D	669	PHE	2.4
1	D	436	VAL	2.3
1	C	407	GLU	2.3
1	D	409	LEU	2.3
1	D	483	LYS	2.2
1	C	494	PHE	2.2
1	D	640	PHE	2.2
1	B	512	TYR	2.1
1	D	494	PHE	2.1
1	A	407	GLU	2.1
1	B	476	GLU	2.1
1	C	648	ASP	2.0

6.2 Non-standard residues in protein, DNA, RNA chains ⓘ

There are no non-standard protein/DNA/RNA residues in this entry.

6.3 Carbohydrates ⓘ

There are no carbohydrates in this entry.

6.4 Ligands ⓘ

In the following table, the Atoms column lists the number of modelled atoms in the group and the number defined in the chemical component dictionary. LLDF column lists the quality of electron density of the group with respect to its neighbouring residues in protein, DNA or RNA chains.

The B-factors column lists the minimum, median, 95th percentile and maximum values of B factors of atoms in the group. The column labelled 'Q< 0.9' lists the number of atoms with occupancy less than 0.9.

Mol	Type	Chain	Res	Atoms	RSR	LLDF	B-factors(Å ²)	Q<0.9
4	ACY	D	8	4/4	0.18	4.58	43,44,45,45	0
4	ACY	A	10	4/4	0.13	1.88	41,41,41,42	0
4	ACY	A	5	4/4	0.12	0.63	31,31,32,32	0
3	ATP	A	1	31/31	0.18	0.47	33,55,70,71	0
4	ACY	D	9	4/4	0.10	0.34	33,35,35,36	0
4	ACY	C	7	4/4	0.13	0.25	34,35,35,35	0
3	ATP	D	4	31/31	0.19	0.18	42,72,86,86	0
2	MG	D	14	1/1	0.12	-0.05	62,62,62,62	0
4	ACY	B	6	4/4	0.11	-0.11	36,36,36,36	0
3	ATP	B	2	31/31	0.14	-0.16	27,48,66,67	0
3	ATP	C	3	31/31	0.12	-0.33	31,50,66,68	0
2	MG	B	11	1/1	0.10	-1.39	39,39,39,39	0
2	MG	A	13	1/1	0.05	-4.83	35,35,35,35	0
2	MG	C	12	1/1	0.07	-4.83	37,37,37,37	0

6.5 Other polymers ⓘ

There are no such residues in this entry.