



# Full wwPDB X-ray Structure Validation Report

Nov 27, 2014 – 09:09 AM EST

PDB ID : 4R3A  
Title : Erythrobacter litoralis EL346 blue-light activated histidine kinase  
Authors : Tomchick, D.R.; Rivera-Cancel, G.; Gardner, K.H.  
Deposited on : 2014-08-14  
Resolution : 2.92 Å(reported)

This is a full wwPDB validation report for a publicly released PDB entry.  
We welcome your comments at [validation@mail.wwpdb.org](mailto:validation@mail.wwpdb.org)  
A user guide is available at <http://wwpdb.org/ValidationPDFNotes.html>

---

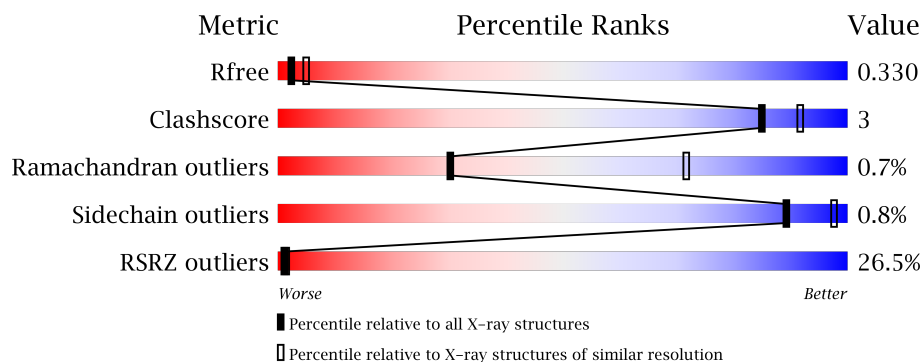
The following versions of software and data (see [references](#)) were used in the production of this report:

MolProbity : 4.02b-467  
Mogul : 1.16 November 2013  
Xtriage (Phenix) : dev-1439  
EDS : stable24195  
Percentile statistics : 21963  
Refmac : 5.8.0049  
CCP4 : 6.1.3  
Ideal geometry (proteins) : Engh & Huber (2001)  
Ideal geometry (DNA, RNA) : Parkinson et. al. (1996)  
Validation Pipeline (wwPDB-VP) : stable24195

# 1 Overall quality at a glance



The reported resolution of this entry is 2.92 Å.

Percentile scores (ranging between 0-100) for global validation metrics of the entry are shown in the following graphic. The table shows the number of entries on which the scores are based.



Metric	Whole archive (#Entries)	Similar resolution (#Entries, resolution range(Å))
$R_{free}$	66092	1172 (2.94-2.90)
Clashscore	79885	1461 (2.94-2.90)
Ramachandran outliers	78287	1419 (2.94-2.90)
Sidechain outliers	78261	1421 (2.94-2.90)
RSRZ outliers	66119	1173 (2.94-2.90)

The table below summarises the geometric issues observed across the polymeric chains and their fit to the electron density. The red, orange, yellow and green segments on the lower bar indicate the fraction of residues that contain outliers for  $\geq 3$ , 2, 1 and 0 types of geometric quality criteria. The upper red bar (where present) indicates the fraction of residues that have poor fit to the electron density.

Mol	Chain	Length	Quality of chain
1	A	352	
1	B	352	

## 2 Entry composition

There are 4 unique types of molecules in this entry. The entry contains 9372 atoms, of which 4639 are hydrogens and 0 are deuterium.

In the tables below, the ZeroOcc column contains the number of atoms modelled with zero occupancy, the AltConf column contains the number of residues with at least one atom in alternate conformation and the Trace column contains the number of residues modelled with at most 2 atoms.

- Molecule 1 is a protein called Blue-light-activated histidine kinase 2.

Mol	Chain	Residues	Atoms						ZeroOcc	AltConf	Trace
1	A	318	Total	C	H	N	O	S	0	0	0
			4903	1525	2437	449	481	11			
1	B	278	Total	C	H	N	O	S	0	0	0
			4285	1336	2136	386	416	11			

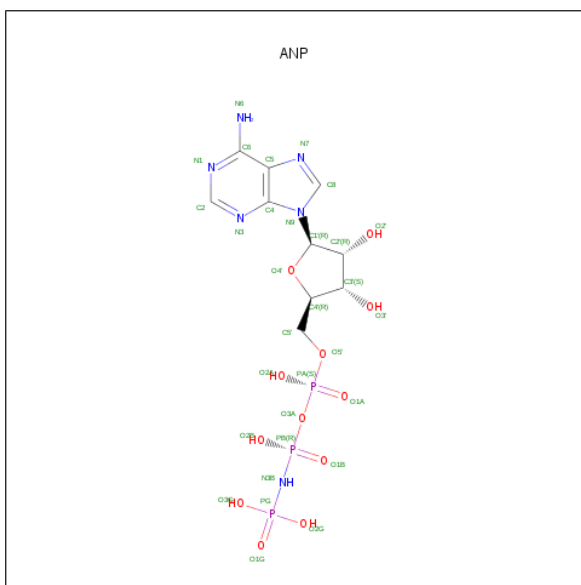
There are 12 discrepancies between the modelled and reference sequences:

Chain	Residue	Modelled	Actual	Comment	Reference
A	-5	GLY	-	EXPRESSION TAG	UNP Q2NB77
A	-4	GLU	-	EXPRESSION TAG	UNP Q2NB77
A	-3	PHE	-	EXPRESSION TAG	UNP Q2NB77
A	-2	LYS	-	EXPRESSION TAG	UNP Q2NB77
A	-1	GLY	-	EXPRESSION TAG	UNP Q2NB77
A	0	LEU	-	EXPRESSION TAG	UNP Q2NB77
B	-5	GLY	-	EXPRESSION TAG	UNP Q2NB77
B	-4	GLU	-	EXPRESSION TAG	UNP Q2NB77
B	-3	PHE	-	EXPRESSION TAG	UNP Q2NB77
B	-2	LYS	-	EXPRESSION TAG	UNP Q2NB77
B	-1	GLY	-	EXPRESSION TAG	UNP Q2NB77
B	0	LEU	-	EXPRESSION TAG	UNP Q2NB77

- Molecule 2 is MAGNESIUM ION (three-letter code: MG) (formula: Mg).

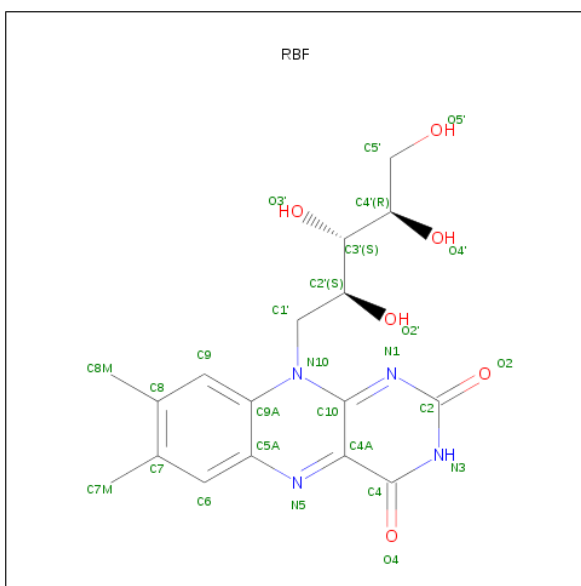
Mol	Chain	Residues	Atoms		ZeroOcc	AltConf
2	B	1	Total	Mg	0	0
			1	1		
2	A	1	Total	Mg	0	0
			1	1		

- Molecule 3 is PHOSPHOAMINOPHOSPHONICACID-ADENYLATE ESTER (three-letter code: ANP) (formula: C<sub>10</sub>H<sub>17</sub>N<sub>6</sub>O<sub>12</sub>P<sub>3</sub>).



Mol	Chain	Residues	Atoms						ZeroOcc	AltConf
3	A	1	Total 44	C 10	H 13	N 6	O 12	P 3	0	0
3	B	1	Total 44	C 10	H 13	N 6	O 12	P 3	0	0

- Molecule 4 is RIBOFLAVIN (three-letter code: RBF) (formula:  $\text{C}_{17}\text{H}_{20}\text{N}_4\text{O}_6$ ).



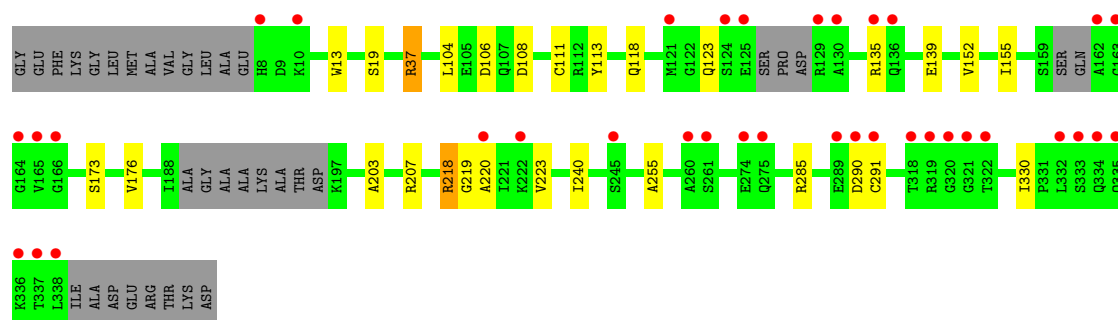
Mol	Chain	Residues	Atoms					ZeroOcc	AltConf
4	A	1	Total 47	C 17	H 20	N 4	O 6	0	0
4	B	1	Total 47	C 17	H 20	N 4	O 6	0	0

### 3 Residue-property plots

These plots are drawn for all protein, RNA and DNA chains in the entry. The first graphic for a chain summarises the proportions of errors displayed in the second graphic. The second graphic shows the sequence view annotated by issues in geometry and electron density. Residues are color-coded according to the number of geometric quality criteria for which they contain at least one outlier: green = 0, yellow = 1, orange = 2 and red = 3 or more. A red dot above a residue indicates a poor fit to the electron density ( $RSRZ > 2$ ). Stretches of 2 or more consecutive residues without any outlier are shown as a green connector. Residues present in the sample, but not in the model, are shown in grey.

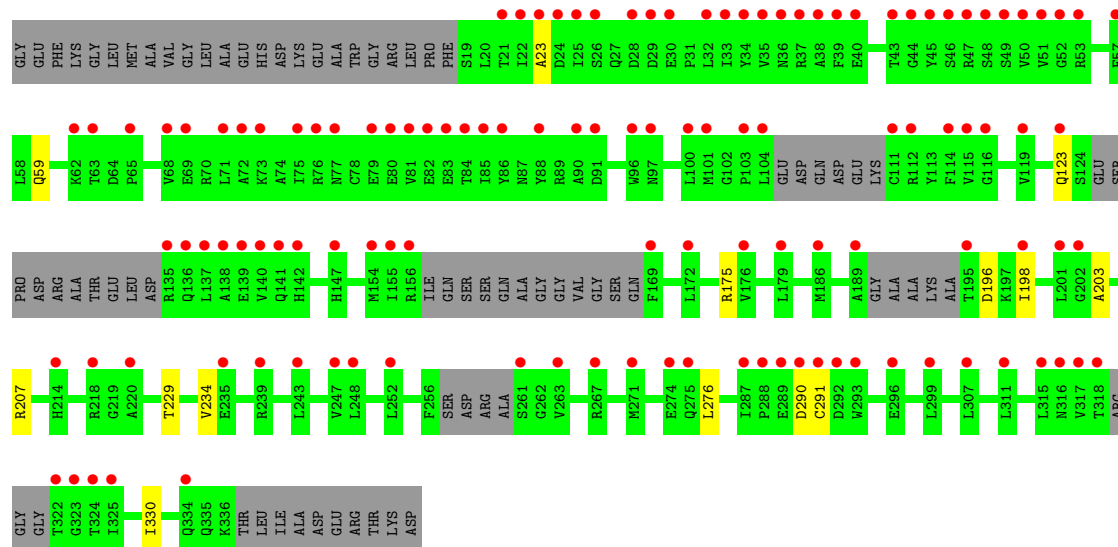
- Molecule 1: Blue-light-activated histidine kinase 2

Chain A: 



- Molecule 1: Blue-light-activated histidine kinase 2

Chain B: 



## 4 Data and refinement statistics

Property	Value	Source
Space group	H 3 2	Depositor
Cell constants a, b, c, $\alpha$ , $\beta$ , $\gamma$	98.88Å 98.88Å 422.25Å 90.00° 90.00° 120.00°	Depositor
Resolution (Å)	46.60 – 2.92 46.65 – 2.92	Depositor EDS
% Data completeness (in resolution range)	94.7 (46.60-2.92) 94.7 (46.65-2.92)	Depositor EDS
$R_{merge}$	0.09	Depositor
$R_{sym}$	(Not available)	Depositor
$\langle I/\sigma(I) \rangle$ <sup>1</sup>	2.42 (at 2.91Å)	Xtriage
Refinement program	PHENIX	Depositor
R, $R_{free}$	0.290 , 0.330 0.291 , 0.330	Depositor DCC
$R_{free}$ test set	1692 reflections (10.01%)	DCC
Wilson B-factor (Å <sup>2</sup> )	53.1	Xtriage
Anisotropy	0.073	Xtriage
Bulk solvent $k_{sol}$ (e/Å <sup>3</sup> ), $B_{sol}$ (Å <sup>2</sup> )	0.36 , 40.2	EDS
Estimated twinning fraction	No twinning to report.	Xtriage
L-test for twinning	$\langle  L  \rangle = 0.50$ , $\langle L^2 \rangle = 0.33$	Xtriage
Outliers	1 of 16913 reflections (0.006%)	Xtriage
$F_o, F_c$ correlation	0.85	EDS
Total number of atoms	9372	wwPDB-VP
Average B, all atoms (Å <sup>2</sup> )	98.0	wwPDB-VP

Xtriage's analysis on translational NCS is as follows: *The largest off-origin peak in the Patterson function is 3.62% of the height of the origin peak. No significant pseudotranslation is detected.*

<sup>1</sup>Intensities estimated from amplitudes.

## 5 Model quality

### 5.1 Standard geometry

Bond lengths and bond angles in the following residue types are not validated in this section: RBF, MG, ANP

The Z score for a bond length (or angle) is the number of standard deviations the observed value is removed from the expected value. A bond length (or angle) with  $|Z| > 5$  is considered an outlier worth inspection. RMSZ is the root-mean-square of all Z scores of the bond lengths (or angles).

Mol	Chain	Bond lengths		Bond angles	
		RMSZ	$\# Z  > 5$	RMSZ	$\# Z  > 5$
1	A	0.29	0/2497	0.57	0/3370
1	B	0.24	0/2172	0.49	0/2931
All	All	0.27	0/4669	0.54	0/6301

There are no bond length outliers.

There are no bond angle outliers.

There are no chirality outliers.

There are no planarity outliers.

### 5.2 Close contacts

In the following table, the Non-H and H(model) columns list the number of non-hydrogen atoms and hydrogen atoms in the chain respectively. The H(added) column lists the number of hydrogens added by MolProbity. The Clashes column lists the number of clashes within the asymmetric unit, and the number in parentheses is this value normalized per 1000 atoms of the molecule in the chain. The Symm-Clashes column gives symmetry related clashes, in the same way as for the Clashes column.

Mol	Chain	Non-H	H(model)	H(added)	Clashes	Symm-Clashes
1	A	2466	2437	2437	19	0
1	B	2149	2136	2134	10	0
2	A	1	0	0	0	0
2	B	1	0	0	0	0
3	A	31	13	13	1	0
3	B	31	13	13	1	0
4	A	27	20	20	0	0
4	B	27	20	20	2	0
All	All	4733	4639	4637	26	0

Clashscore is defined as the number of clashes calculated for the entry per 1000 atoms (including hydrogens) of the entry. The overall clashscore for this entry is 3.

All (26) close contacts within the same asymmetric unit are listed below.

Atom-1	Atom-2	Distance(Å)	Clash(Å)
1:B:23:ALA:HB3	4:B:402:RBF:HC82	1.87	0.56
1:A:123:GLN:O	1:B:123:GLN:NE2	2.40	0.55
1:A:135:ARG:NH1	1:A:139:GLU:OE2	2.44	0.51
1:A:13:TRP:HB3	1:A:37:ARG:HG3	1.94	0.50
1:A:218:ARG:N	1:A:218:ARG:HD3	2.27	0.49
1:A:104:LEU:HG	1:A:152:VAL:HG11	1.94	0.48
1:A:255:ALA:O	1:A:285:ARG:N	2.45	0.48
1:A:37:ARG:CD	1:A:37:ARG:H	2.27	0.48
1:A:207:ARG:HG2	1:B:203:ALA:HB1	1.97	0.46
1:B:276:LEU:N	1:B:330:ILE:O	2.44	0.46
1:A:290:ASP:OD1	1:A:291:CYS:N	2.49	0.46
1:A:152:VAL:O	1:A:155:ILE:HG13	2.16	0.45
1:B:290:ASP:OD1	1:B:291:CYS:N	2.49	0.45
1:B:59:GLN:OE1	4:B:402:RBF:O4'	2.35	0.45
3:A:401:ANP:O2G	3:A:401:ANP:O3A	2.33	0.45
1:A:203:ALA:HB1	1:B:207:ARG:HG2	1.98	0.45
1:B:175:ARG:NH2	3:B:401:ANP:O1G	2.47	0.44
1:A:223:VAL:HB	1:B:229:THR:CG2	2.47	0.44
1:A:104:LEU:N	1:A:113:TYR:O	2.45	0.44
1:A:240:ILE:HG12	1:A:330:ILE:HD13	1.99	0.43
1:A:37:ARG:HD3	1:A:37:ARG:H	1.84	0.43
1:A:104:LEU:HD12	1:A:104:LEU:HA	1.95	0.42
1:A:37:ARG:HH12	1:A:173:SER:HB3	1.83	0.42
1:A:19:SER:HB3	1:A:118:GLN:HB2	2.02	0.42
1:B:198:ILE:HD11	1:B:234:VAL:CG2	2.51	0.41
1:A:176:VAL:HG12	1:A:176:VAL:O	2.21	0.41

There are no symmetry-related clashes.

## 5.3 Torsion angles

### 5.3.1 Protein backbone ⓘ

In the following table, the Percentiles column shows the percent Ramachandran outliers of the chain as a percentile score with respect to all X-ray entries followed by that with respect to entries of similar resolution.

The Analysed column shows the number of residues for which the backbone conformation was analysed, and the total number of residues.



Mol	Chain	Analysed	Favoured	Allowed	Outliers	Percentiles	
1	A	310/352 (88%)	295 (95%)	11 (4%)	4 (1%)	18	54
1	B	264/352 (75%)	257 (97%)	7 (3%)	0	100	100
All	All	574/704 (82%)	552 (96%)	18 (3%)	4 (1%)	30	72

All (4) Ramachandran outliers are listed below:

Mol	Chain	Res	Type
1	A	106	ASP
1	A	219	GLY
1	A	108	ASP
1	A	220	ALA

### 5.3.2 Protein sidechains ⓘ

In the following table, the Percentiles column shows the percent sidechain outliers of the chain as a percentile score with respect to all X-ray entries followed by that with respect to entries of similar resolution. The Analysed column shows the number of residues for which the sidechain conformation was analysed, and the total number of residues.

Mol	Chain	Analysed	Rotameric	Outliers	Percentiles	
1	A	266/289 (92%)	263 (99%)	3 (1%)	84	97
1	B	234/289 (81%)	233 (100%)	1 (0%)	95	99
All	All	500/578 (86%)	496 (99%)	4 (1%)	89	97

All (4) residues with a non-rotameric sidechain are listed below:

Mol	Chain	Res	Type
1	A	37	ARG
1	A	111	CYS
1	A	218	ARG
1	B	196	ASP

Some sidechains can be flipped to improve hydrogen bonding and reduce clashes. There are no such sidechains identified.

### 5.3.3 RNA ⓘ

There are no RNA chains in this entry.

## 5.4 Non-standard residues in protein, DNA, RNA chains ⓘ

There are no non-standard protein/DNA/RNA residues in this entry.

## 5.5 Carbohydrates ⓘ

There are no carbohydrates in this entry.

## 5.6 Ligand geometry ⓘ

Of 6 ligands modelled in this entry, 2 are monoatomic - leaving 4 for Mogul analysis.

In the following table, the Counts columns list the number of bonds (or angles) for which Mogul statistics could be retrieved, the number of bonds (or angles) that are observed in the model and the number of bonds (or angles) that are defined in the chemical component dictionary. The Link column lists molecule types, if any, to which the group is linked. The Z score for a bond length (or angle) is the number of standard deviations the observed value is removed from the expected value. A bond length (or angle) with  $|Z| > 2$  is considered an outlier worth inspection. RMSZ is the root-mean-square of all Z scores of the bond lengths (or angles).

Mol	Type	Chain	Res	Link	Bond lengths			Bond angles		
					Counts	RMSZ	$\# Z  > 2$	Counts	RMSZ	$\# Z  > 2$
3	ANP	A	401	2	33,33,33	1.62	5 (15%)	48,52,52	2.24	3 (6%)
4	RBF	A	402	-	29,29,29	0.83	0	39,43,43	1.89	7 (17%)
3	ANP	B	401	2	33,33,33	1.78	5 (15%)	48,52,52	1.88	3 (6%)
4	RBF	B	402	-	29,29,29	0.88	0	39,43,43	1.96	8 (20%)

In the following table, the Chirals column lists the number of chiral outliers, the number of chiral centers analysed, the number of these observed in the model and the number defined in the chemical component dictionary. Similar counts are reported in the Torsion and Rings columns. '-' means no outliers of that kind were identified.

Mol	Type	Chain	Res	Link	Chirals	Torsions	Rings
3	ANP	A	401	2	-	1/18/38/38	0/3/3/3
4	RBF	A	402	-	-	0/14/14/14	0/3/3/3
3	ANP	B	401	2	-	0/18/38/38	0/3/3/3
4	RBF	B	402	-	-	0/14/14/14	0/3/3/3

All (10) bond length outliers are listed below:

Mol	Chain	Res	Type	Atoms	Z	Observed(Å)	Ideal(Å)
3	B	401	ANP	PG-N3B	6.79	1.70	1.64
3	A	401	ANP	PG-N3B	5.61	1.69	1.64

*Continued on next page...*

*Continued from previous page...*

Mol	Chain	Res	Type	Atoms	Z	Observed(Å)	Ideal(Å)
3	B	401	ANP	PB-N3B	4.63	1.68	1.64
3	A	401	ANP	PB-N3B	4.30	1.68	1.64
3	A	401	ANP	PB-O1B	3.97	1.50	1.46
3	B	401	ANP	PG-O1G	3.52	1.50	1.46
3	B	401	ANP	PB-O1B	3.47	1.50	1.46
3	A	401	ANP	PG-O1G	2.97	1.49	1.46
3	B	401	ANP	PB-O3A	-2.13	1.56	1.59
3	A	401	ANP	PB-O3A	-2.10	1.56	1.59

All (21) bond angle outliers are listed below:

Mol	Chain	Res	Type	Atoms	Z	Observed(°)	Ideal(°)
3	A	401	ANP	PB-N3B-PG	-14.19	106.20	130.07
3	B	401	ANP	PB-N3B-PG	-11.42	110.87	130.07
4	B	402	RBF	C2-N1-C10	7.02	121.71	114.95
4	A	402	RBF	C2-N1-C10	6.83	121.53	114.95
4	B	402	RBF	C1'-N10-C9A	4.57	123.47	118.67
4	A	402	RBF	C9A-N10-C10	-4.39	117.44	121.77
4	A	402	RBF	C1'-N10-C9A	4.14	123.02	118.67
4	B	402	RBF	C9A-N10-C10	-3.91	117.91	121.77
4	B	402	RBF	C4A-N5-C5A	3.70	121.00	116.68
4	A	402	RBF	C5A-C9A-N10	3.40	120.14	117.63
3	B	401	ANP	PA-O3A-PB	-3.37	120.47	132.05
4	B	402	RBF	C4A-C10-N1	-3.29	118.36	123.00
4	A	402	RBF	C4A-N5-C5A	3.28	120.50	116.68
4	A	402	RBF	C4A-C10-N1	-3.23	118.44	123.00
4	B	402	RBF	C5A-C9A-N10	3.00	119.84	117.63
3	A	401	ANP	PA-O3A-PB	-2.98	121.83	132.05
3	A	401	ANP	O1G-PG-N3B	-2.51	108.04	111.83
4	B	402	RBF	C4-N3-C2	-2.46	120.33	125.39
4	A	402	RBF	C4-N3-C2	-2.30	120.67	125.39
4	B	402	RBF	C10-C4A-N5	-2.22	120.19	122.57
3	B	401	ANP	O1G-PG-N3B	-2.04	108.75	111.83

There are no chirality outliers.

All (1) torsion outliers are listed below:

Mol	Chain	Res	Type	Atoms
3	A	401	ANP	O1G-PG-N3B-PB

There are no ring outliers.

## 5.7 Other polymers ⓘ

There are no such residues in this entry.

## 5.8 Polymer linkage issues

There are no chain breaks in this entry.

## 6 Fit of model and data

### 6.1 Protein, DNA and RNA chains

In the following table, the column labelled ‘#RSRZ> 2’ contains the number (and percentage) of RSRZ outliers, followed by percent RSRZ outliers for the chain as percentile scores relative to all X-ray entries and entries of similar resolution. The OWAB column contains the minimum, median, 95<sup>th</sup> percentile and maximum values of the occupancy-weighted average B-factor per residue. The column labelled ‘Q< 0.9’ lists the number of (and percentage) of residues with an average occupancy less than 0.9.

Mol	Chain	Analysed	<RSRZ>	#RSRZ>2	OWAB(Å <sup>2</sup> )	Q<0.9
1	A	318/352 (90%)	0.74	36 (11%) <b>6</b> <b>7</b>	20, 54, 125, 170	0
1	B	278/352 (78%)	2.15	122 (43%) <b>1</b> <b>0</b>	69, 119, 168, 195	0
All	All	596/704 (84%)	1.40	158 (26%) <b>1</b> <b>1</b>	20, 87, 161, 195	0

All (158) RSRZ outliers are listed below:

Mol	Chain	Res	Type	RSRZ
1	B	50	VAL	9.0
1	B	111	CYS	8.1
1	B	104	LEU	8.0
1	B	287	ILE	7.5
1	B	45	TYR	7.0
1	B	83	GLU	6.7
1	B	48	SER	6.6
1	B	34	TYR	6.5
1	B	186	MET	6.4
1	A	165	VAL	6.3
1	B	63	THR	6.2
1	B	51	VAL	6.1
1	B	53	ARG	6.0
1	B	39	PHE	6.0
1	A	8	HIS	5.8
1	B	47	ARG	5.8
1	A	261	SER	5.8
1	B	44	GLY	5.7
1	B	29	ASP	5.7
1	B	28	ASP	5.7
1	A	319	ARG	5.4
1	B	84	THR	5.3
1	B	141	GLN	5.3
1	B	81	VAL	5.1

*Continued on next page...*

*Continued from previous page...*

Mol	Chain	Res	Type	RSRZ
1	B	155	ILE	5.1
1	A	124	SER	4.8
1	B	30	GLU	4.8
1	B	156	ARG	4.8
1	B	76	ARG	4.8
1	B	293	TRP	4.7
1	B	138	ALA	4.6
1	B	220	ALA	4.6
1	B	37	ARG	4.5
1	B	79	GLU	4.4
1	B	252	LEU	4.4
1	A	320	GLY	4.4
1	B	322	THR	4.4
1	B	275	GLN	4.4
1	B	62	LYS	4.3
1	B	25	ILE	4.3
1	B	123	GLN	4.3
1	B	114	PHE	4.3
1	A	289	GLU	4.2
1	B	33	ILE	4.2
1	A	337	THR	4.2
1	B	26	SER	4.1
1	B	135	ARG	4.1
1	B	103	PRO	4.0
1	A	334	GLN	4.0
1	A	125	GLU	4.0
1	B	112	ARG	3.9
1	A	130	ALA	3.8
1	B	21	THR	3.8
1	A	129	ARG	3.7
1	B	35	VAL	3.7
1	B	96	TRP	3.7
1	B	291	CYS	3.7
1	B	73	LYS	3.7
1	B	189	ALA	3.6
1	B	116	GLY	3.6
1	B	38	ALA	3.6
1	B	85	ILE	3.6
1	A	290	ASP	3.5
1	A	321	GLY	3.5
1	B	179	LEU	3.5
1	A	10	LYS	3.5

*Continued on next page...*

*Continued from previous page...*

Mol	Chain	Res	Type	RSRZ
1	B	52	GLY	3.4
1	A	338	LEU	3.4
1	B	82	GLU	3.4
1	B	274	GLU	3.4
1	A	333	SER	3.4
1	A	336	LYS	3.3
1	A	260	ALA	3.3
1	B	65	PRO	3.3
1	B	325	ILE	3.3
1	B	115	VAL	3.3
1	B	40	GLU	3.2
1	B	147	HIS	3.2
1	B	248	LEU	3.2
1	B	137	LEU	3.2
1	B	324	THR	3.2
1	B	290	ASP	3.1
1	B	71	LEU	3.0
1	A	164	GLY	3.0
1	B	49	SER	3.0
1	B	198	ILE	3.0
1	A	220	ALA	3.0
1	B	176	VAL	3.0
1	B	77	ASN	3.0
1	A	335	GLN	3.0
1	B	136	GLN	3.0
1	B	100	LEU	2.9
1	B	97	ASN	2.9
1	B	318	THR	2.9
1	B	46	SER	2.9
1	B	267	ARG	2.9
1	A	275	GLN	2.8
1	B	75	ILE	2.8
1	B	140	VAL	2.8
1	B	307	LEU	2.8
1	B	261	SER	2.8
1	A	162	ALA	2.8
1	A	291	CYS	2.8
1	B	22	ILE	2.8
1	B	80	GLU	2.8
1	B	292	ASP	2.8
1	B	72	ALA	2.8
1	B	32	LEU	2.8

*Continued on next page...*

*Continued from previous page...*

Mol	Chain	Res	Type	RSRZ
1	B	86	TYR	2.7
1	B	316	ASN	2.7
1	B	172	LEU	2.7
1	B	36	ASN	2.6
1	B	57	PHE	2.6
1	B	154	MET	2.6
1	B	311	LEU	2.6
1	B	91	ASP	2.6
1	A	166	GLY	2.6
1	B	169	PHE	2.6
1	B	263	VAL	2.6
1	B	68	VAL	2.5
1	B	271	MET	2.5
1	A	121	MET	2.5
1	B	90	ALA	2.5
1	B	323	GLY	2.5
1	B	315	LEU	2.5
1	B	195	THR	2.5
1	B	24	ASP	2.5
1	B	23	ALA	2.4
1	B	235	GLU	2.4
1	B	288	PRO	2.4
1	A	222	LYS	2.4
1	B	202	GLY	2.4
1	B	218	ARG	2.3
1	B	317	VAL	2.3
1	A	163	GLY	2.3
1	B	247	VAL	2.3
1	A	322	THR	2.3
1	A	332	LEU	2.3
1	B	214	HIS	2.2
1	A	136	GLN	2.2
1	B	142	HIS	2.2
1	B	289	GLU	2.2
1	B	43	THR	2.2
1	A	274	GLU	2.1
1	B	299	LEU	2.1
1	B	69	GLU	2.1
1	B	201	LEU	2.1
1	B	139	GLU	2.1
1	B	88	TYR	2.1
1	B	239	ARG	2.1

*Continued on next page...*



*Continued from previous page...*

Mol	Chain	Res	Type	RSRZ
1	B	296	GLU	2.1
1	A	245	SER	2.1
1	B	334	GLN	2.0
1	A	135	ARG	2.0
1	B	101	MET	2.0
1	B	243	LEU	2.0
1	A	318	THR	2.0
1	B	119	VAL	2.0

## 6.2 Non-standard residues in protein, DNA, RNA chains ⓘ

There are no non-standard protein/DNA/RNA residues in this entry.

## 6.3 Carbohydrates ⓘ

There are no carbohydrates in this entry.

## 6.4 Ligands ⓘ

In the following table, the Atoms column lists the number of modelled atoms in the group and the number defined in the chemical component dictionary. LLDF column lists the quality of electron density of the group with respect to its neighbouring residues in protein, DNA or RNA chains. The B-factors column lists the minimum, median, 95<sup>th</sup> percentile and maximum values of B factors of atoms in the group. The column labelled 'Q< 0.9' lists the number of atoms with occupancy less than 0.9.

Mol	Type	Chain	Res	Atoms	RSR	LLDF	B-factors(Å <sup>2</sup> )	Q<0.9
3	ANP	A	401	31/31	0.29	1.32	23,52,185,217	0
2	MG	A	400	1/1	0.27	1.15	24,24,24,24	0
4	RBF	B	402	27/27	0.43	0.18	121,148,228,236	0
4	RBF	A	402	27/27	0.17	-0.91	12,37,74,86	0
3	ANP	B	401	31/31	0.19	-1.06	42,106,139,160	0
2	MG	B	400	1/1	0.13	-1.22	79,79,79,79	0

## 6.5 Other polymers ⓘ

There are no such residues in this entry.