



wwPDB X-ray Structure Validation Summary Report i

Oct 23, 2014 – 07:15 PM EDT

PDB ID : 4R3Z
Title : Crystal structure of human ArgRS-GlnRS-AIMP1 complex
Authors : Fu, Y.; Kim, Y.; Cho, Y.
Deposited on : 2014-08-18
Resolution : 4.03 Å(reported)

This is a wwPDB validation summary report for a publicly released PDB entry.

We welcome your comments at validation@mail.wwpdb.org

A user guide is available at <http://wwpdb.org/ValidationPDFNotes.html>

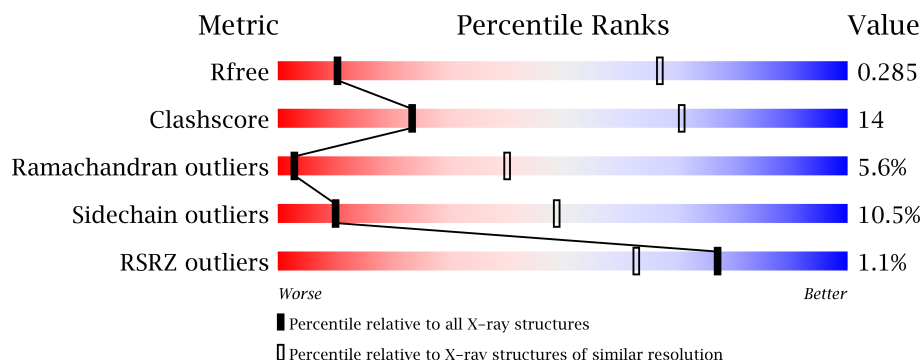
The following versions of software and data (see [references](#)) were used in the production of this report:

MolProbity : 4.02b-467
Mogul : 1.16 November 2013
Xtriage (Phenix) : dev-1439
EDS : stable24103
Percentile statistics : 21963
Refmac : 5.8.0049
CCP4 : 6.3.0 (Settle)
Ideal geometry (proteins) : Engh & Huber (2001)
Ideal geometry (DNA, RNA) : Parkinson et. al. (1996)
Validation Pipeline (wwPDB-VP) : stable24103

1 Overall quality at a glance

The reported resolution of this entry is 4.03 Å.

Percentile scores (ranging between 0-100) for global validation metrics of the entry are shown in the following graphic. The table shows the number of entries on which the scores are based.



Metric	Whole archive (#Entries)	Similar resolution (#Entries, resolution range(Å))
R_{free}	66092	1039 (4.60-3.46)
Clashscore	79885	1240 (4.52-3.50)
Ramachandran outliers	78287	1175 (4.52-3.50)
Sidechain outliers	78261	1160 (4.52-3.50)
RSRZ outliers	66119	1039 (4.60-3.46)

The table below summarises the geometric issues observed across the polymeric chains and their fit to the electron density. The red, orange, yellow and green segments on the lower bar indicate the fraction of residues that contain outliers for ≥ 3 , 2, 1 and 0 types of geometric quality criteria. The upper red bar (where present) indicates the fraction of residues that have poor fit to the electron density.

Mol	Chain	Length	Quality of chain
1	A	312	
2	B	675	
3	C	799	

2 Entry composition

There are 3 unique types of molecules in this entry. The entry contains 10242 atoms, of which 0 are hydrogen and 0 are deuterium.

In the tables below, the ZeroOcc column contains the number of atoms modelled with zero occupancy, the AltConf column contains the number of residues with at least one atom in alternate conformation and the Trace column contains the number of residues modelled with at most 2 atoms.

- Molecule 1 is a protein called Aminoacyl tRNA synthase complex-interacting multifunctional protein 1.

Mol	Chain	Residues	Atoms				ZeroOcc	AltConf	Trace
1	A	76	Total	C	N	O	0	0	0
			617	393	108	116			

- Molecule 2 is a protein called Arginine-tRNA ligase, cytoplasmic.

Mol	Chain	Residues	Atoms					ZeroOcc	AltConf	Trace
2	B	659	Total	C	N	O	S	0	0	0
			5286	3364	905	987	30			

There are 15 discrepancies between the modelled and reference sequences:

Chain	Residue	Modelled	Actual	Comment	Reference
B	-14	MET	-	EXPRESSION TAG	UNP P54136
B	-13	GLY	-	EXPRESSION TAG	UNP P54136
B	-12	SER	-	EXPRESSION TAG	UNP P54136
B	-11	SER	-	EXPRESSION TAG	UNP P54136
B	-10	HIS	-	EXPRESSION TAG	UNP P54136
B	-9	HIS	-	EXPRESSION TAG	UNP P54136
B	-8	HIS	-	EXPRESSION TAG	UNP P54136
B	-7	HIS	-	EXPRESSION TAG	UNP P54136
B	-6	HIS	-	EXPRESSION TAG	UNP P54136
B	-5	HIS	-	EXPRESSION TAG	UNP P54136
B	-4	SER	-	EXPRESSION TAG	UNP P54136
B	-3	GLN	-	EXPRESSION TAG	UNP P54136
B	-2	ASP	-	EXPRESSION TAG	UNP P54136
B	-1	PRO	-	EXPRESSION TAG	UNP P54136
B	0	MET	-	EXPRESSION TAG	UNP P54136

- Molecule 3 is a protein called Glutamine-tRNA ligase.

Mol	Chain	Residues	Atoms					ZeroOcc	AltConf	Trace
3	C	538	Total	C	N	O	S	0	0	0
			4339	2786	753	774	26			

There are 24 discrepancies between the modelled and reference sequences:

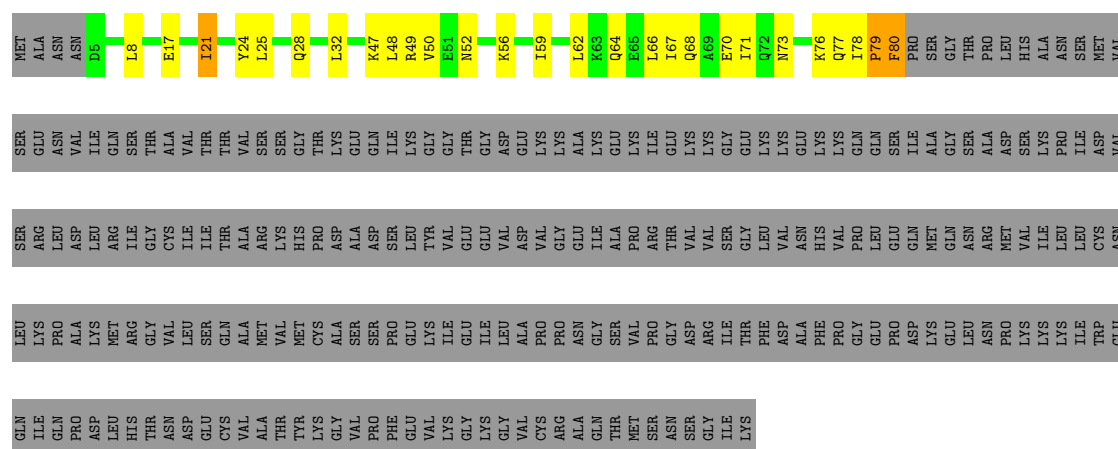
Chain	Residue	Modelled	Actual	Comment	Reference
C	-23	HIS	-	EXPRESSION TAG	UNP P47897
C	-22	GLY	-	EXPRESSION TAG	UNP P47897
C	-21	SER	-	EXPRESSION TAG	UNP P47897
C	-20	SER	-	EXPRESSION TAG	UNP P47897
C	-19	HIS	-	EXPRESSION TAG	UNP P47897
C	-18	HIS	-	EXPRESSION TAG	UNP P47897
C	-17	HIS	-	EXPRESSION TAG	UNP P47897
C	-16	HIS	-	EXPRESSION TAG	UNP P47897
C	-15	HIS	-	EXPRESSION TAG	UNP P47897
C	-14	HIS	-	EXPRESSION TAG	UNP P47897
C	-13	SER	-	EXPRESSION TAG	UNP P47897
C	-12	SER	-	EXPRESSION TAG	UNP P47897
C	-11	GLY	-	EXPRESSION TAG	UNP P47897
C	-10	LEU	-	EXPRESSION TAG	UNP P47897
C	-9	VAL	-	EXPRESSION TAG	UNP P47897
C	-8	PRO	-	EXPRESSION TAG	UNP P47897
C	-7	ARG	-	EXPRESSION TAG	UNP P47897
C	-6	GLY	-	EXPRESSION TAG	UNP P47897
C	-5	SER	-	EXPRESSION TAG	UNP P47897
C	-4	HIS	-	EXPRESSION TAG	UNP P47897
C	-3	MET	-	EXPRESSION TAG	UNP P47897
C	-2	ALA	-	EXPRESSION TAG	UNP P47897
C	-1	SER	-	EXPRESSION TAG	UNP P47897
C	0	MET	-	EXPRESSION TAG	UNP P47897

3 Residue-property plots

These plots are drawn for all protein, RNA and DNA chains in the entry. The first graphic for a chain summarises the proportions of errors displayed in the second graphic. The second graphic shows the sequence view annotated by issues in geometry and electron density. Residues are color-coded according to the number of geometric quality criteria for which they contain at least one outlier: green = 0, yellow = 1, orange = 2 and red = 3 or more. A red dot above a residue indicates a poor fit to the electron density ($RSRZ > 2$). Stretches of 2 or more consecutive residues without any outlier are shown as a green connector. Residues present in the sample, but not in the model, are shown in grey.

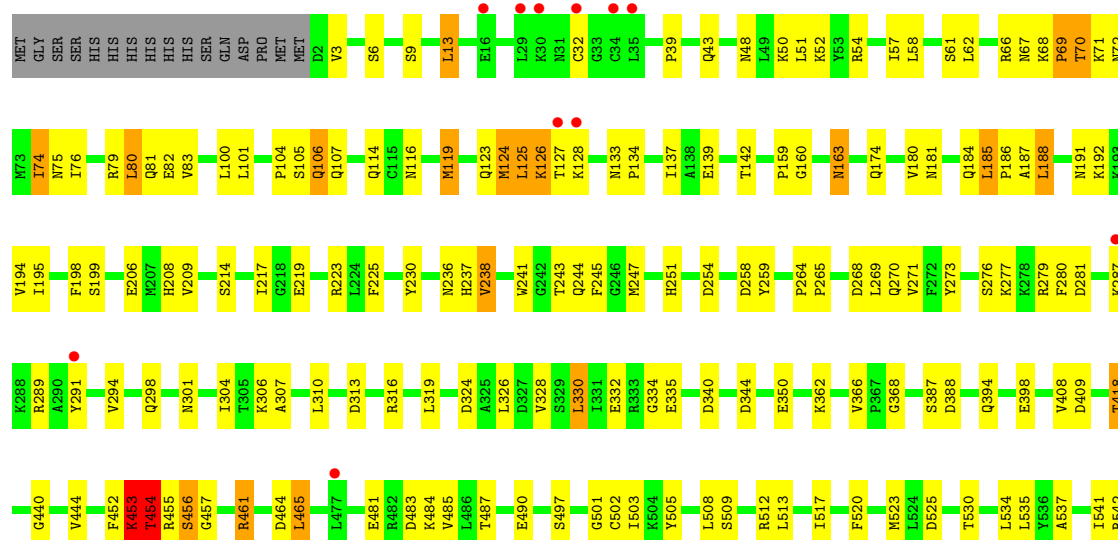
- Molecule 1: Aminoacyl tRNA synthase complex-interacting multifunctional protein 1

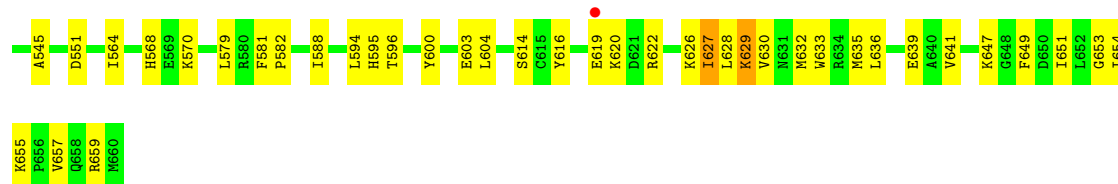
Chain A: 



- Molecule 2: Arginine-tRNA ligase, cytoplasmic

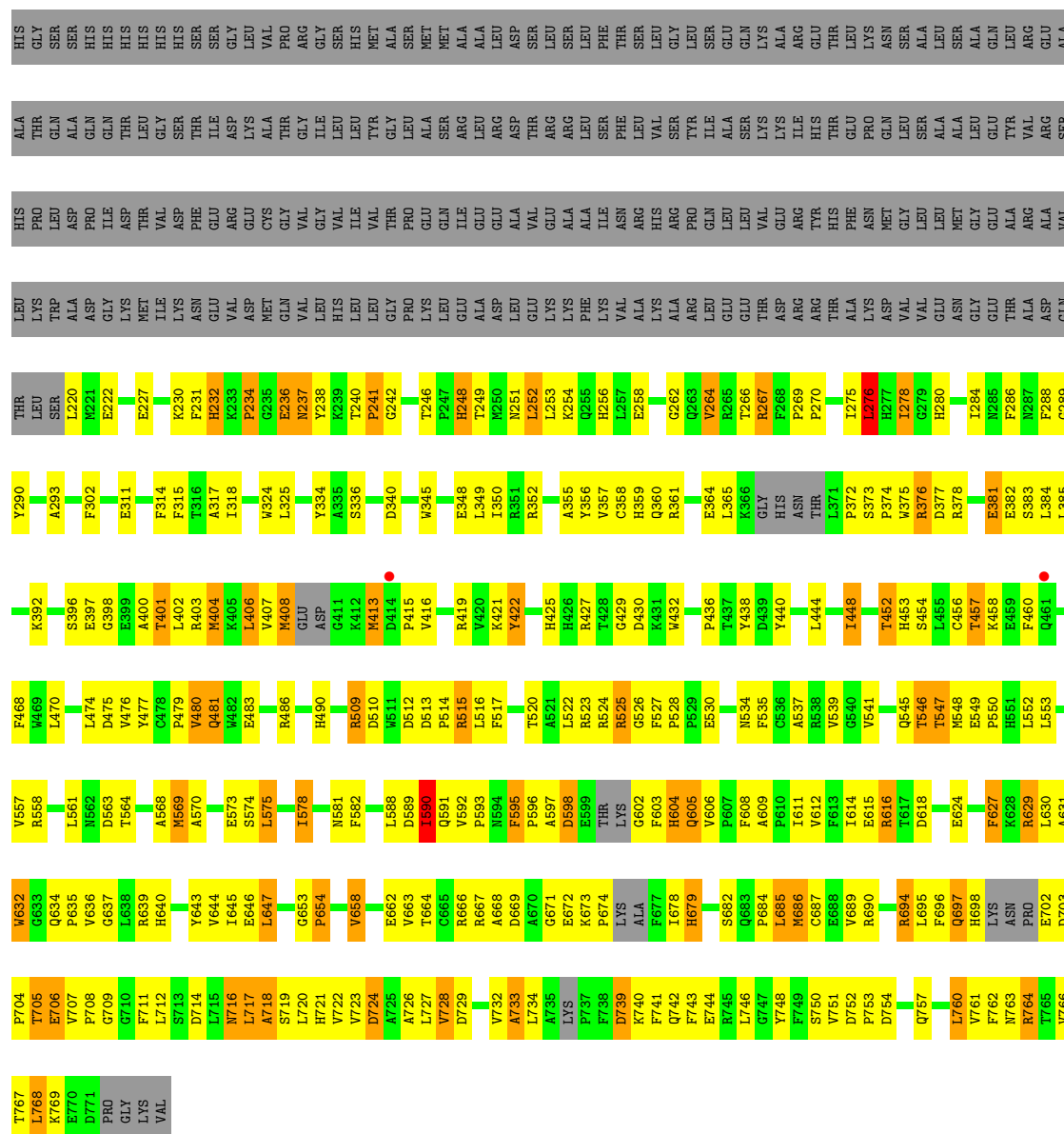
Chain B: 





• Molecule 3: Glutamine-tRNA ligase

Chain C:



4 Data and refinement statistics

Property	Value	Source
Space group	C 2 2 21	Depositor
Cell constants a, b, c, α , β , γ	102.64Å 313.25Å 161.76Å 90.00° 90.00° 90.00°	Depositor
Resolution (Å)	37.92 – 4.03 37.92 – 4.03	Depositor EDS
% Data completeness (in resolution range)	70.1 (37.92-4.03) 70.2 (37.92-4.03)	Depositor EDS
R_{merge}	(Not available)	Depositor
R_{sym}	(Not available)	Depositor
$\langle I/\sigma(I) \rangle$ ¹	11.20 (at 3.99Å)	Xtriage
Refinement program	PHENIX (phenix.refine: dev_1745)	Depositor
R, R_{free}	0.229 , 0.285 0.229 , 0.285	Depositor DCC
R_{free} test set	765 reflections (4.98%)	DCC
Wilson B-factor (Å ²)	102.7	Xtriage
Anisotropy	0.178	Xtriage
Bulk solvent k_{sol} (e/Å ³), B_{sol} (Å ²)	0.26 , 109.8	EDS
Estimated twinning fraction	No twinning to report.	Xtriage
L-test for twinning	$\langle L \rangle = 0.55$, $\langle L^2 \rangle = 0.39$	Xtriage
Outliers	1 of 15382 reflections (0.007%)	Xtriage
F_o, F_c correlation	0.89	EDS
Total number of atoms	10242	wwPDB-VP
Average B, all atoms (Å ²)	153.0	wwPDB-VP

Xtriage's analysis on translational NCS is as follows: *The largest off-origin peak in the Patterson function is 3.96% of the height of the origin peak. No significant pseudotranslation is detected.*

¹Intensities estimated from amplitudes.

5 Model quality

5.1 Standard geometry

The Z score for a bond length (or angle) is the number of standard deviations the observed value is removed from the expected value. A bond length (or angle) with $|Z| > 5$ is considered an outlier worth inspection. RMSZ is the root-mean-square of all Z scores of the bond lengths (or angles).

Mol	Chain	Bond lengths		Bond angles	
		RMSZ	$\# Z > 5$	RMSZ	$\# Z > 5$
1	A	0.28	0/619	0.48	0/824
2	B	0.28	0/5379	0.47	0/7246
3	C	0.32	0/4457	0.53	0/6044
All	All	0.30	0/10455	0.50	0/14114

There are no bond length outliers.

There are no bond angle outliers.

There are no chirality outliers.

There are no planarity outliers.

5.2 Close contacts

In the following table, the Non-H and H(model) columns list the number of non-hydrogen atoms and hydrogen atoms in the chain respectively. The H(added) column lists the number of hydrogens added by MolProbity. The Clashes column lists the number of clashes within the asymmetric unit, and the number in parentheses is this value normalized per 1000 atoms of the molecule in the chain. The Symm-Clashes column gives symmetry related clashes, in the same way as for the Clashes column.

Mol	Chain	Non-H	H(model)	H(added)	Clashes	Symm-Clashes
1	A	617	0	668	19	0
2	B	5286	0	5347	119	0
3	C	4339	0	4255	162	0
All	All	10242	0	10270	295	0

Clashscore is defined as the number of clashes calculated for the entry per 1000 atoms (including hydrogens) of the entry. The overall clashscore for this entry is 14.

The worst 5 of 295 close contacts within the same asymmetric unit are listed below.

Atom-1	Atom-2	Distance(Å)	Clash(Å)
3:C:733:ALA:H	3:C:734:LEU:HG	1.29	0.96

Continued on next page...

Continued from previous page...

Atom-1	Atom-2	Distance(Å)	Clash(Å)
2:B:620:LYS:HG2	2:B:629:LYS:HB2	1.55	0.87
3:C:637:GLY:HA2	3:C:644:VAL:HG22	1.59	0.82
3:C:558:ARG:HD3	3:C:769:LYS:HA	1.63	0.80
3:C:276:LEU:HD11	3:C:318:ILE:HG12	1.63	0.79

There are no symmetry-related clashes.

5.3 Torsion angles

5.3.1 Protein backbone ⓘ

In the following table, the Percentiles column shows the percent Ramachandran outliers of the chain as a percentile score with respect to all X-ray entries followed by that with respect to entries of similar resolution.

The Analysed column shows the number of residues for which the backbone conformation was analysed, and the total number of residues.

Mol	Chain	Analysed	Favoured	Allowed	Outliers	Percentiles	
1	A	74/312 (24%)	69 (93%)	4 (5%)	1 (1%)	16	74
2	B	657/675 (97%)	586 (89%)	58 (9%)	13 (2%)	11	68
3	C	524/799 (66%)	372 (71%)	96 (18%)	56 (11%)	1	17
All	All	1255/1786 (70%)	1027 (82%)	158 (13%)	70 (6%)	3	40

5 of 70 Ramachandran outliers are listed below:

Mol	Chain	Res	Type
2	B	187	ALA
3	C	264	VAL
3	C	269	PRO
3	C	372	PRO
3	C	397	GLU

5.3.2 Protein sidechains ⓘ

In the following table, the Percentiles column shows the percent sidechain outliers of the chain as a percentile score with respect to all X-ray entries followed by that with respect to entries of similar resolution. The Analysed column shows the number of residues for which the sidechain conformation was analysed, and the total number of residues.

Mol	Chain	Analysed	Rotameric	Outliers	Percentiles	
1	A	66/269 (24%)	61 (92%)	5 (8%)	19	66
2	B	579/594 (98%)	539 (93%)	40 (7%)	22	69
3	C	466/685 (68%)	394 (84%)	72 (16%)	4	28
All	All	1111/1548 (72%)	994 (90%)	117 (10%)	10	49

5 of 117 residues with a non-rotameric sidechain are listed below:

Mol	Chain	Res	Type
3	C	267	ARG
3	C	406	LEU
3	C	724	ASP
3	C	276	LEU
3	C	340	ASP

Some sidechains can be flipped to improve hydrogen bonding and reduce clashes. 5 of 19 such sidechains are listed below:

Mol	Chain	Res	Type
3	C	263	GLN
3	C	426	HIS
3	C	679	HIS
2	B	631	ASN
3	C	697	GLN

5.3.3 RNA ⓘ

There are no RNA chains in this entry.

5.4 Non-standard residues in protein, DNA, RNA chains ⓘ

There are no non-standard protein/DNA/RNA residues in this entry.

5.5 Carbohydrates ⓘ

There are no carbohydrates in this entry.

5.6 Ligand geometry ⓘ

There are no ligands in this entry.

5.7 Other polymers ⓘ

There are no such residues in this entry.

5.8 Polymer linkage issues

There are no chain breaks in this entry.

6 Fit of model and data ⓘ

6.1 Protein, DNA and RNA chains ⓘ

In the following table, the column labelled ‘#RSRZ> 2’ contains the number (and percentage) of RSRZ outliers, followed by percent RSRZ outliers for the chain as percentile scores relative to all X-ray entries and entries of similar resolution. The OWAB column contains the minimum, median, 95th percentile and maximum values of the occupancy-weighted average B-factor per residue. The column labelled ‘Q< 0.9’ lists the number of (and percentage) of residues with an average occupancy less than 0.9.

Mol	Chain	Analysed	<RSRZ>	#RSRZ>2	OWAB(Å ²)	Q<0.9
1	A	76/312 (24%)	0.17	0 100 100	89, 159, 206, 234	0
2	B	659/675 (97%)	0.19	12 (1%) 65 52	77, 161, 235, 299	0
3	C	538/799 (67%)	0.09	2 (0%) 90 82	67, 129, 231, 318	4 (0%)
All	All	1273/1786 (71%)	0.14	14 (1%) 77 63	67, 150, 232, 318	4 (0%)

The worst 5 of 14 RSRZ outliers are listed below:

Mol	Chain	Res	Type	RSRZ
2	B	34	CYS	4.1
2	B	128	LYS	3.5
2	B	35	LEU	2.9
2	B	29	LEU	2.6
2	B	287	LYS	2.5

6.2 Non-standard residues in protein, DNA, RNA chains ⓘ

There are no non-standard protein/DNA/RNA residues in this entry.

6.3 Carbohydrates ⓘ

There are no carbohydrates in this entry.

6.4 Ligands ⓘ

There are no ligands in this entry.

6.5 Other polymers ⓘ

There are no such residues in this entry.