



Full wwPDB X-ray Structure Validation Report

Feb 28, 2014 – 02:38 PM GMT

PDB ID : 3R5Q
Title : Crystal structure of sheep lactoperoxidase in complex with tetrahydrofuran at 2.7 Å resolution
Authors : Yamini,S.; Singh, R.P.; Singh, A.K.; Sinha, M.; Kaur, P.; Sharma, S.; Singh, T.P.
Deposited on : 2011-03-19
Resolution : 2.70 Å(reported)

This is a full wwPDB validation report for a publicly released PDB entry.
We welcome your comments at validation@mail.wwpdb.org
A user guide is available at <http://wwpdb.org/ValidationPDFNotes.html>

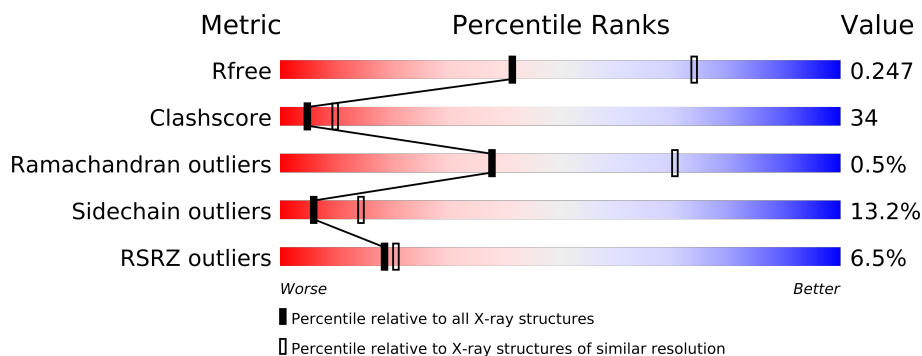
The following versions of software and data (see [references](#)) were used in the production of this report:

MolProbity : 4.02b-467
Mogul : 1.15 2013
Xtriage (Phenix) : dev-1323
EDS : stable22639
Percentile statistics : 21963
Refmac : 5.8.0049
CCP4 : 6.3.0 (Settle)
Ideal geometry (proteins) : Engh & Huber (2001)
Ideal geometry (DNA, RNA) : Parkinson et. al. (1996)
Validation Pipeline (wwPDB-VP) : stable22683

1 Overall quality at a glance

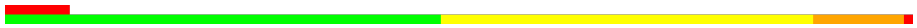
The reported resolution of this entry is 2.70 Å.

Percentile scores (ranging between 0-100) for global validation metrics of the entry are shown in the following graphic. The table shows the number of entries on which the scores are based.



Metric	Whole archive (#Entries)	Similar resolution (#Entries, resolution range(Å))
R_{free}	66092	1557 (2.70-2.70)
Clashscore	79885	1939 (2.70-2.70)
Ramachandran outliers	78287	1905 (2.70-2.70)
Sidechain outliers	78261	1905 (2.70-2.70)
RSRZ outliers	66119	1559 (2.70-2.70)

The table below summarises the geometric issues observed across the polymeric chains and their fit to the electron density. The red, orange, yellow and green segments on the lower bar indicate the fraction of residues that contain outliers for ≥ 3 , 2, 1 and 0 types of geometric quality criteria. The upper red bar (where present) indicates the fraction of residues that have poor fit to the electron density.

Mol	Chain	Length	Quality of chain
1	A	595	

The following table lists non-polymeric compounds that are outliers for geometric or electron-density-fit criteria:

Mol	Type	Chain	Res	Geometry	Electron density
2	NAG	A	602	-	X
7	SCN	A	615	-	X
8	FU1	A	596	-	X
8	FU1	A	597	-	X

2 Entry composition i

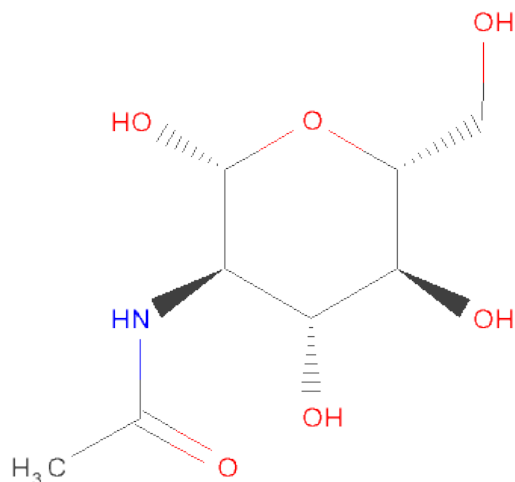
There are 9 unique types of molecules in this entry. The entry contains 5024 atoms, of which 0 are hydrogen and 0 are deuterium.

In the tables below, the ZeroOcc column contains the number of atoms modelled with zero occupancy, the AltConf column contains the number of residues with at least one atom in alternate conformation and the Trace column contains the number of residues modelled with at most 2 atoms.

- Molecule 1 is a protein called Airway lactoperoxidase.

Mol	Chain	Residues	Atoms						ZeroOcc	AltConf	Trace
			Total	C	N	O	P	S			
1	A	595	4768	3024	853	864	1	26	0	0	0

- Molecule 2 is SUGAR (N-ACETYL-D-GLUCOSAMINE) (three-letter code: NAG) (formula: $C_8H_{15}NO_6$).



Mol	Chain	Residues	Atoms				ZeroOcc	AltConf
			Total	C	N	O		
2	A	1	14	8	1	5	0	0
2	A	1	14	8	1	5	0	0

- Molecule 3 is CALCIUM ION (three-letter code: CA) (formula: Ca).

Mol	Chain	Residues	Atoms		ZeroOcc	AltConf
3	A	1	Total	Ca	0	0
			1	1		

- Molecule 4 is PROTOPORPHYRIN IX CONTAINING FE (three-letter code: HEM) (formula: $C_{34}H_{32}FeN_4O_4$).



Mol	Chain	Residues	Atoms					ZeroOcc	AltConf
4	A	1	Total	C	Fe	N	O	0	0
			43	34	1	4	4		

- Molecule 5 is IODIDE ION (three-letter code: IOD) (formula: I).

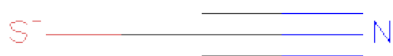
Mol	Chain	Residues	Atoms		ZeroOcc	AltConf
5	A	10	Total	I	0	0
			10	10		

- Molecule 6 is 1,2-ETHANEDIOL (three-letter code: EDO) (formula: $C_2H_6O_2$).



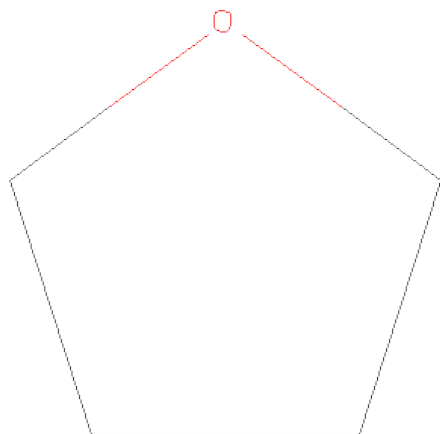
Mol	Chain	Residues	Atoms			ZeroOcc	AltConf
6	A	1	Total	C	O	0	0
			4	2	2		

- Molecule 7 is THIOCYANATE ION (three-letter code: SCN) (formula: CNS).



Mol	Chain	Residues	Atoms				ZeroOcc	AltConf
7	A	1	Total	C	N	S	0	0
			3	1	1	1		

- Molecule 8 is TETRAHYDROFURAN (three-letter code: FU1) (formula: C₄H₈O).



Mol	Chain	Residues	Atoms			ZeroOcc	AltConf
8	A	1	Total	C	O	0	0
			5	4	1		
8	A	1	Total	C	O	0	0
			5	4	1		

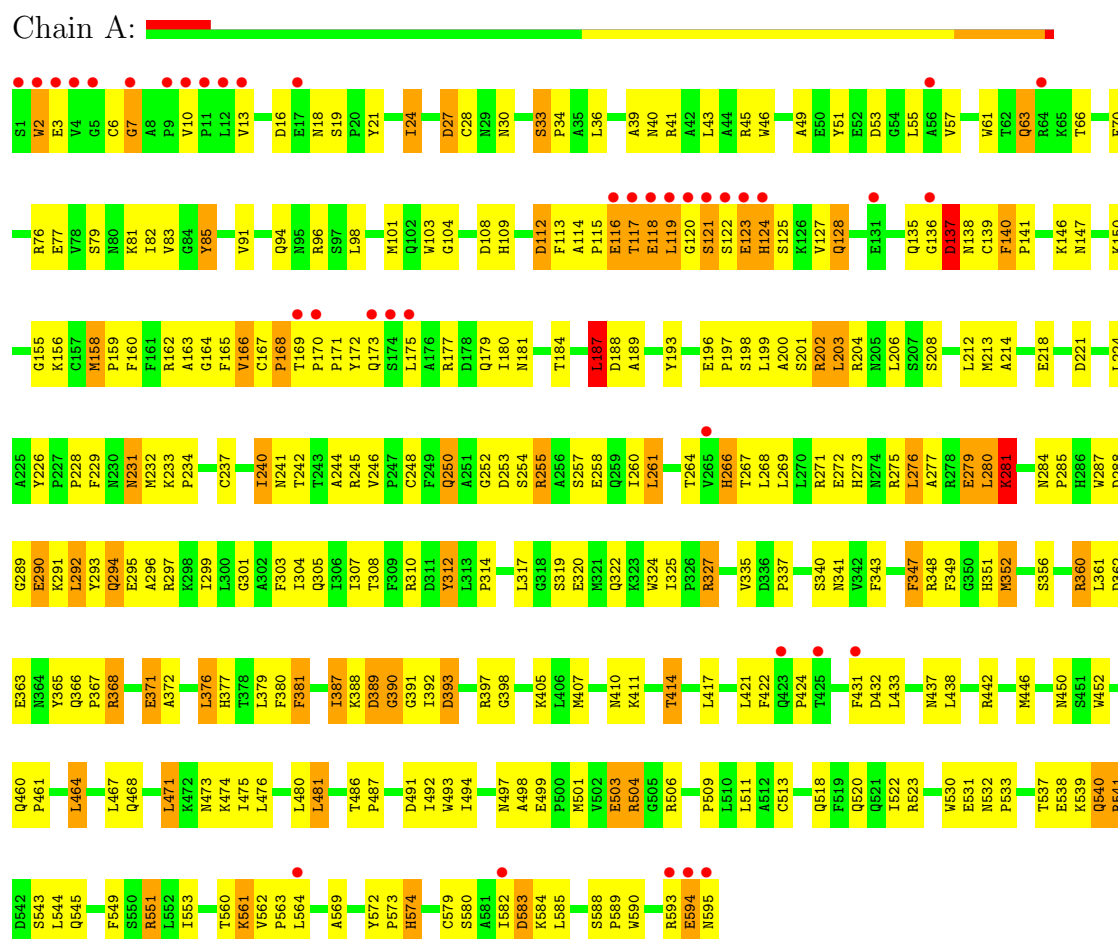
- Molecule 9 is water.

Mol	Chain	Residues	Atoms		ZeroOcc	AltConf
9	A	157	Total	O	0	0
			157	157		

3 Residue-property plots

These plots are drawn for all protein, RNA and DNA chains in the entry. The first graphic for a chain summarises the proportions of errors displayed in the second graphic. The second graphic shows the sequence view annotated by issues in geometry and electron density. Residues are color-coded according to the number of geometric quality criteria for which they contain at least one outlier: green = 0, yellow = 1, orange = 2 and red = 3 or more. A red dot above a residue indicates a poor fit to the electron density ($RSRZ > 2$). Stretches of 2 or more consecutive residues without any outlier are shown as a green connector. Residues present in the sample, but not in the model, are shown in grey.

• Molecule 1: Airway lactoperoxidase



4 Data and refinement statistics

Property	Value	Source
Space group	P 1 21 1	Depositor
Cell constants a, b, c, α , β , γ	53.94Å 80.18Å 76.12Å 90.00° 102.86° 90.00°	Depositor
Resolution (Å)	43.98 – 2.70 43.97 – 2.70	Depositor EDS
% Data completeness (in resolution range)	97.6 (43.98-2.70) 97.7 (43.97-2.70)	Depositor EDS
R_{merge}	(Not available)	Depositor
R_{sym}	0.08	Depositor
$\langle I/\sigma(I) \rangle$ ¹	11.71 (at 2.69Å)	Xtriage
Refinement program	CNS 1.1	Depositor
R, R_{free}	0.230 , 0.250 0.246 , 0.247	Depositor DCC
R_{free} test set	860 reflections (5.30%)	DCC
Wilson B-factor (Å ²)	48.8	Xtriage
Anisotropy	0.820	Xtriage
Bulk solvent k_{sol} (e/Å ³), B_{sol} (Å ²)	0.26 , 24.4	EDS
Estimated twinning fraction	No twinning to report.	Xtriage
L-test for twinning	$\langle L \rangle = 0.50$, $\langle L^2 \rangle = 0.34$	Xtriage
Outliers	0 of 17093 reflections	Xtriage
F_o, F_c correlation	0.92	EDS
Total number of atoms	5024	wwPDB-VP
Average B, all atoms (Å ²)	51.0	wwPDB-VP

Xtriage's analysis on translational NCS is as follows: *The largest off-origin peak in the Patterson function is 5.46% of the height of the origin peak. No significant pseudotranslation is detected.*

¹Intensities estimated from amplitudes.

5 Model quality

5.1 Standard geometry

Bond lengths and bond angles in the following residue types are not validated in this section: SCN, NAG, SEP, CA, FU1, EDO, HEM, IOD

The Z score for a bond length (or angle) is the number of standard deviations the observed value is removed from the expected value. A bond length (or angle) with $|Z| > 5$ is considered an outlier worth inspection. RMSZ is the root-mean-square of all Z scores of the bond lengths (or angles).

Mol	Chain	Bond lengths		Bond angles	
		RMSZ	$\# Z > 5$	RMSZ	$\# Z > 5$
1	A	0.69	3/4882 (0.1%)	0.97	26/6618 (0.4%)

Chiral center outliers are detected by calculating the chiral volume of a chiral center and verifying if the center is modelled as a planar moiety or with the opposite hand. A planarity outlier is detected by checking planarity of atoms in a peptide group, atoms in a mainchain group or atoms of a sidechain that are expected to be planar.

Mol	Chain	#Chirality outliers	#Planarity outliers
1	A	0	4

All (3) bond length outliers are listed below:

Mol	Chain	Res	Type	Atoms	Z	Observed(Å)	Ideal(Å)
1	A	312	TYR	CD1-CE1	-5.88	1.30	1.39
1	A	381	PHE	CB-CG	-5.24	1.42	1.51
1	A	312	TYR	CD2-CE2	-5.08	1.31	1.39

All (26) bond angle outliers are listed below:

Mol	Chain	Res	Type	Atoms	Z	Observed(°)	Ideal(°)
1	A	266	HIS	O-C-N	9.48	137.87	122.70
1	A	281	LYS	CB-CA-C	-9.48	91.45	110.40
1	A	583	ASP	N-CA-C	-7.40	91.03	111.00
1	A	266	HIS	CA-C-N	-7.37	100.98	117.20
1	A	371	GLU	N-CA-C	-7.17	91.64	111.00
1	A	140	PHE	N-CA-C	-7.08	91.87	111.00
1	A	390	GLY	N-CA-C	6.74	129.94	113.10
1	A	123	GLU	CB-CA-C	6.69	123.78	110.40
1	A	166	VAL	N-CA-C	6.54	128.65	111.00
1	A	158	MET	N-CA-C	-6.12	94.46	111.00

Continued on next page...

Continued from previous page...

Mol	Chain	Res	Type	Atoms	Z	Observed(°)	Ideal(°)
1	A	240	ILE	CB-CA-C	5.94	123.48	111.60
1	A	187	LEU	N-CA-C	-5.70	95.62	111.00
1	A	119	LEU	N-CA-C	-5.66	95.72	111.00
1	A	33	SER	N-CA-C	-5.64	95.78	111.00
1	A	112	ASP	CB-CA-C	-5.63	99.14	110.40
1	A	85	TYR	CB-CA-C	5.58	121.55	110.40
1	A	241	ASN	N-CA-C	-5.46	96.27	111.00
1	A	206	LEU	CA-CB-CG	-5.44	102.78	115.30
1	A	124	HIS	CB-CA-C	-5.43	99.53	110.40
1	A	280	LEU	CB-CA-C	-5.37	100.00	110.20
1	A	137	ASP	CB-CG-OD1	-5.34	113.49	118.30
1	A	114	ALA	CB-CA-C	5.34	118.11	110.10
1	A	114	ALA	N-CA-C	-5.34	96.59	111.00
1	A	119	LEU	CA-CB-CG	-5.28	103.15	115.30
1	A	281	LYS	N-CA-C	5.09	124.75	111.00
1	A	325	ILE	N-CA-C	-5.07	97.30	111.00

There are no chirality outliers.

All (4) planarity outliers are listed below:

Mol	Chain	Res	Type	Group
1	A	117	THR	Peptide
1	A	118	GLU	Mainchain
1	A	196	GLU	Mainchain
1	A	294	GLN	Peptide

5.2 Close contacts ⓘ

In the following table, the Non-H and H(model) columns list the number of non-hydrogen atoms and hydrogen atoms in the chain respectively. The H(added) column lists the number of hydrogens added by MolProbity. The Clashes column lists the number of clashes within the asymmetric unit, and the number in parentheses is this value normalized per 1000 atoms of the molecule in the chain. The Symm-Clashes column gives symmetry related clashes, in the same way as for the Clashes column.

Mol	Chain	Non-H	H(model)	H(added)	Clashes	Symm-Clashes
1	A	4768	0	4684	326	0
2	A	28	0	26	1	0
3	A	1	0	0	0	0
4	A	43	0	30	12	0
5	A	10	0	0	4	0

Continued on next page...

Continued from previous page...

Mol	Chain	Non-H	H(model)	H(added)	Clashes	Symm-Clashes
6	A	4	0	6	4	0
7	A	3	0	0	1	0
8	A	10	0	16	14	0
9	A	157	0	0	4	0
All	All	5024	0	4762	328	0

Clashscore is defined as the number of clashes calculated for the entry per 1000 atoms (including hydrogens) of the entry. The overall clashscore for this entry is 34.

All (328) close contacts within the same asymmetric unit are listed below.

Atom-1	Atom-2	Distance(Å)	Clash(Å)
1:A:213:MET:HG2	1:A:273:HIS:CD2	1.68	1.27
1:A:169:THR:CG2	1:A:170:PRO:HD3	1.66	1.25
1:A:258:GLU:HG3	8:A:596:FU1:H3A	1.28	1.16
1:A:117:THR:CG2	1:A:118:GLU:H	1.59	1.15
1:A:293:TYR:O	1:A:294:GLN:HG2	1.46	1.14
1:A:117:THR:CG2	1:A:118:GLU:N	2.05	1.13
1:A:280:LEU:O	1:A:284:ASN:HB2	1.49	1.11
1:A:117:THR:HG22	1:A:118:GLU:N	1.47	1.08
1:A:172:TYR:O	1:A:173:GLN:HG2	1.53	1.08
1:A:169:THR:HG22	1:A:170:PRO:HD3	1.34	1.07
1:A:327:ARG:H	1:A:327:ARG:CD	1.66	1.07
1:A:169:THR:HG23	1:A:170:PRO:HD3	1.38	1.03
1:A:168:PRO:CB	1:A:172:TYR:HB2	1.88	1.02
1:A:582:ILE:HB	1:A:583:ASP:HB2	1.05	1.02
1:A:290:GLU:O	1:A:290:GLU:HG3	1.60	1.01
1:A:294:GLN:O	1:A:294:GLN:HG3	1.59	1.01
1:A:368:ARG:HH11	1:A:368:ARG:HG3	1.22	1.01
1:A:564:LEU:HD12	1:A:582:ILE:HD11	1.44	0.99
1:A:213:MET:CG	1:A:273:HIS:CD2	2.45	0.99
1:A:169:THR:CG2	1:A:170:PRO:CD	2.43	0.97
1:A:327:ARG:HD2	1:A:327:ARG:N	1.80	0.96
1:A:255:ARG:HA	8:A:597:FU1:H5A	1.48	0.96
1:A:368:ARG:HH11	1:A:368:ARG:CG	1.79	0.96
1:A:574:HIS:HD2	1:A:574:HIS:O	1.49	0.96
1:A:504:ARG:HD3	6:A:722:EDO:H22	1.47	0.96
1:A:228:PRO:O	1:A:250:GLN:HB3	1.64	0.96
1:A:213:MET:CG	1:A:273:HIS:HD2	1.79	0.95
1:A:351:HIS:HD1	1:A:437:ASN:HD21	0.96	0.95
1:A:564:LEU:HD11	1:A:582:ILE:HD13	1.47	0.95
1:A:27:ASP:O	1:A:28:CYS:HB2	1.68	0.92
1:A:582:ILE:CB	1:A:583:ASP:HB2	1.97	0.92

Continued on next page...

Continued from previous page...

Atom-1	Atom-2	Distance(Å)	Clash(Å)
1:A:213:MET:HG2	1:A:273:HIS:HD2	1.20	0.92
1:A:582:ILE:HB	1:A:583:ASP:CB	1.97	0.91
1:A:24:ILE:HD13	1:A:200:ALA:HB1	1.53	0.91
1:A:574:HIS:C	1:A:574:HIS:CD2	2.43	0.91
1:A:116:GLU:HA	1:A:163:ALA:HA	1.53	0.91
1:A:327:ARG:HD2	1:A:327:ARG:H	1.36	0.91
1:A:169:THR:N	1:A:170:PRO:HD2	1.85	0.89
1:A:258:GLU:OE2	4:A:605:HEM:HMB3	1.73	0.89
1:A:117:THR:HG22	1:A:118:GLU:H	0.74	0.89
1:A:272:GLU:HG3	1:A:276:LEU:HD22	1.54	0.88
1:A:327:ARG:CD	1:A:327:ARG:N	2.33	0.86
1:A:118:GLU:OE1	1:A:118:GLU:HA	1.74	0.86
1:A:327:ARG:HD3	1:A:327:ARG:H	1.41	0.86
1:A:167:CYS:HB2	1:A:168:PRO:HD3	1.58	0.85
1:A:294:GLN:HB2	9:A:742:HOH:O	1.74	0.85
1:A:53:ASP:OD1	1:A:57:VAL:HG22	1.75	0.85
1:A:169:THR:HG22	1:A:170:PRO:CD	2.08	0.84
1:A:140:PHE:O	1:A:160:PHE:HB3	1.78	0.84
1:A:564:LEU:CD1	1:A:582:ILE:CD1	2.56	0.83
1:A:258:GLU:HG3	8:A:596:FU1:C3	2.06	0.83
1:A:169:THR:HG23	1:A:170:PRO:CD	2.07	0.83
1:A:2:TRP:O	1:A:3:GLU:HG2	1.80	0.82
1:A:501:MET:HG2	1:A:506:ARG:O	1.78	0.82
1:A:168:PRO:CG	1:A:172:TYR:HB2	2.10	0.81
1:A:574:HIS:O	1:A:574:HIS:CD2	2.34	0.81
1:A:124:HIS:CD2	1:A:128:GLN:HB2	2.16	0.79
1:A:468:GLN:OE1	1:A:474:LYS:HG3	1.84	0.78
1:A:564:LEU:CD1	1:A:582:ILE:HD13	2.14	0.77
1:A:450:ASN:OD1	1:A:461:PRO:HD2	1.84	0.76
1:A:351:HIS:HD1	1:A:437:ASN:ND2	1.78	0.76
1:A:450:ASN:HD21	1:A:487:PRO:HB2	1.50	0.76
1:A:293:TYR:O	1:A:294:GLN:CG	2.30	0.76
1:A:564:LEU:HD12	1:A:582:ILE:CD1	2.12	0.76
1:A:108:ASP:OD2	4:A:605:HEM:CMD	2.34	0.75
1:A:258:GLU:CG	8:A:596:FU1:H3A	2.13	0.74
1:A:120:GLY:HA3	1:A:123:GLU:HB3	1.69	0.74
1:A:199:LEU:O	1:A:200:ALA:C	2.25	0.74
1:A:169:THR:N	1:A:170:PRO:CD	2.50	0.74
1:A:123:GLU:HG3	1:A:125:SER:HB3	1.70	0.73
1:A:63:GLN:CD	1:A:63:GLN:H	1.89	0.73
1:A:167:CYS:HB2	1:A:168:PRO:CD	2.19	0.73
1:A:168:PRO:HG3	1:A:172:TYR:CB	2.19	0.73

Continued on next page...

Continued from previous page...

Atom-1	Atom-2	Distance(Å)	Clash(Å)
1:A:117:THR:CG2	1:A:118:GLU:HB2	2.19	0.72
1:A:504:ARG:HD3	6:A:722:EDO:C2	2.20	0.72
1:A:564:LEU:CD1	1:A:582:ILE:HD11	2.18	0.71
1:A:574:HIS:HD2	1:A:574:HIS:C	1.88	0.71
1:A:301:GLY:O	1:A:305:GLN:HG3	1.91	0.71
1:A:233:LYS:HA	1:A:234:PRO:C	2.09	0.70
1:A:260:ILE:HG21	1:A:379:LEU:HD13	1.73	0.70
1:A:258:GLU:OE2	4:A:605:HEM:CMB	2.38	0.70
1:A:117:THR:HB	1:A:162:ARG:O	1.91	0.70
1:A:530:TRP:CZ2	1:A:531:GLU:HG3	2.27	0.70
1:A:193:TYR:CE2	1:A:297:ARG:HG3	2.26	0.69
1:A:356:SER:HB3	1:A:414:THR:HG21	1.75	0.69
1:A:503:GLU:HG3	1:A:504:ARG:HB2	1.74	0.69
1:A:280:LEU:O	1:A:284:ASN:CB	2.35	0.69
1:A:352:MET:O	1:A:405:LYS:HE2	1.91	0.68
1:A:290:GLU:OE2	1:A:294:GLN:NE2	2.27	0.68
1:A:368:ARG:HG3	1:A:368:ARG:NH1	1.99	0.67
1:A:255:ARG:CA	8:A:597:FU1:H5A	2.25	0.67
1:A:118:GLU:CA	1:A:118:GLU:OE1	2.43	0.67
1:A:242:THR:O	1:A:245:ARG:HB3	1.94	0.67
1:A:213:MET:HG2	1:A:273:HIS:NE2	2.08	0.66
1:A:168:PRO:HB2	1:A:172:TYR:HB2	1.75	0.66
1:A:199:LEU:O	1:A:201:SER:N	2.29	0.66
1:A:562:VAL:HB	1:A:563:PRO:HD2	1.79	0.65
1:A:564:LEU:HD11	1:A:582:ILE:CD1	2.19	0.65
1:A:212:LEU:HD23	1:A:277:ALA:HB3	1.76	0.65
1:A:120:GLY:CA	1:A:123:GLU:HB3	2.25	0.65
1:A:551:ARG:HG3	1:A:583:ASP:O	1.95	0.65
1:A:294:GLN:O	1:A:294:GLN:CG	2.29	0.65
1:A:255:ARG:HG2	8:A:596:FU1:H4A	1.77	0.65
1:A:473:ASN:OD1	1:A:475:ILE:HG22	1.97	0.65
1:A:389:ASP:O	1:A:391:GLY:N	2.27	0.65
1:A:46:TRP:CE2	1:A:340:SER:HB3	2.32	0.64
1:A:168:PRO:HB3	1:A:172:TYR:HB2	1.80	0.64
1:A:168:PRO:HG3	1:A:172:TYR:HB2	1.77	0.64
1:A:108:ASP:OD2	4:A:605:HEM:HMD3	1.98	0.63
1:A:503:GLU:O	1:A:503:GLU:CG	2.45	0.63
1:A:272:GLU:O	1:A:272:GLU:HG3	1.98	0.63
1:A:275:ARG:HH12	1:A:276:LEU:HD13	1.63	0.63
1:A:253:ASP:OD2	1:A:255:ARG:HD3	1.99	0.62
4:A:605:HEM:HMB1	4:A:605:HEM:HBB2	1.81	0.62
1:A:61:TRP:HH2	1:A:136:GLY:O	1.83	0.62

Continued on next page...

Continued from previous page...

Atom-1	Atom-2	Distance(Å)	Clash(Å)
1:A:124:HIS:HD2	1:A:128:GLN:HB2	1.62	0.62
1:A:117:THR:HG23	1:A:118:GLU:N	2.09	0.61
1:A:79:SER:O	1:A:83:VAL:HB	2.00	0.61
1:A:594:GLU:O	1:A:595:ASN:HB2	2.00	0.61
1:A:450:ASN:ND2	1:A:487:PRO:HB2	2.13	0.61
1:A:296:ALA:O	1:A:299:ILE:N	2.35	0.60
1:A:424:PRO:O	5:A:719:IOD:I	2.90	0.60
1:A:407:MET:CB	1:A:501:MET:CE	2.80	0.60
1:A:579:CYS:O	1:A:582:ILE:O	2.20	0.59
1:A:407:MET:HB2	1:A:501:MET:CE	2.32	0.59
1:A:61:TRP:CH2	1:A:136:GLY:O	2.55	0.59
1:A:310:ARG:O	1:A:314:PRO:HG2	2.02	0.59
1:A:368:ARG:CG	1:A:368:ARG:NH1	2.49	0.59
1:A:335:VAL:O	1:A:337:PRO:HD3	2.02	0.59
1:A:172:TYR:C	1:A:173:GLN:HG2	2.19	0.59
1:A:30:ASN:O	1:A:34:PRO:HA	2.02	0.59
1:A:166:VAL:HG23	1:A:167:CYS:H	1.69	0.58
1:A:267:THR:O	1:A:271:ARG:HG3	2.04	0.58
1:A:551:ARG:HD2	1:A:584:LYS:HA	1.85	0.58
1:A:588:SER:N	1:A:589:PRO:CD	2.66	0.58
1:A:452:TRP:CD1	1:A:492:ILE:HD12	2.37	0.58
1:A:253:ASP:OD1	1:A:255:ARG:NH1	2.37	0.57
1:A:172:TYR:O	1:A:173:GLN:CG	2.42	0.57
1:A:197:PRO:O	1:A:198:SEP:C	2.52	0.57
1:A:123:GLU:HG3	1:A:125:SER:CB	2.34	0.57
1:A:294:GLN:HA	1:A:297:ARG:HB3	1.87	0.56
1:A:188:ASP:O	1:A:189:ALA:HB3	2.05	0.56
1:A:572:TYR:CE2	1:A:573:PRO:HB3	2.40	0.56
1:A:53:ASP:CG	1:A:57:VAL:HG22	2.25	0.56
1:A:221:ASP:O	1:A:224:LEU:HB2	2.05	0.56
1:A:467:LEU:HG	1:A:471:LEU:HD22	1.88	0.56
1:A:421:LEU:O	1:A:431:PHE:HB2	2.05	0.56
1:A:167:CYS:CB	1:A:168:PRO:HD3	2.32	0.56
1:A:117:THR:HG23	1:A:118:GLU:HB2	1.85	0.56
1:A:272:GLU:CG	1:A:276:LEU:HD22	2.33	0.56
1:A:117:THR:CG2	1:A:118:GLU:CB	2.85	0.55
1:A:159:PRO:HD2	1:A:431:PHE:HE2	1.72	0.55
1:A:158:MET:HE1	1:A:432:ASP:H	1.72	0.55
1:A:264:THR:HG23	1:A:392:ILE:HB	1.87	0.55
1:A:169:THR:H	1:A:170:PRO:HD2	1.67	0.55
1:A:288:ASP:HB3	1:A:291:LYS:HB2	1.89	0.55
1:A:560:THR:HA	1:A:579:CYS:SG	2.47	0.55

Continued on next page...

Continued from previous page...

Atom-1	Atom-2	Distance(Å)	Clash(Å)
1:A:187:LEU:HD13	1:A:305:GLN:HA	1.89	0.54
1:A:287:TRP:HB3	1:A:292:LEU:HD13	1.90	0.54
1:A:481:LEU:HD11	1:A:487:PRO:HD3	1.91	0.53
1:A:499:GLU:OE2	1:A:509:PRO:HD2	2.07	0.53
1:A:137:ASP:OD1	1:A:137:ASP:N	2.40	0.53
1:A:303:PHE:O	1:A:307:ILE:HG12	2.08	0.53
1:A:159:PRO:HD2	1:A:431:PHE:CE2	2.43	0.53
1:A:108:ASP:OD2	4:A:605:HEM:HMD2	2.06	0.53
1:A:295:GLU:O	1:A:299:ILE:HG13	2.09	0.53
1:A:51:TYR:CD2	1:A:55:LEU:O	2.62	0.52
1:A:248:CYS:HB2	7:A:615:SCN:S	2.49	0.52
1:A:376:LEU:HD22	1:A:376:LEU:O	2.09	0.52
1:A:117:THR:HG21	1:A:138:ASN:HB3	1.91	0.52
1:A:170:PRO:HB2	1:A:171:PRO:HD2	1.90	0.52
1:A:284:ASN:N	1:A:285:PRO:HD3	2.23	0.52
1:A:377:HIS:HA	1:A:380:PHE:CE2	2.46	0.52
1:A:361:LEU:O	1:A:397:ARG:NH1	2.42	0.52
1:A:77:GLU:HG3	5:A:708:IOD:I	2.81	0.51
1:A:343:PHE:CG	1:A:518:GLN:HG2	2.45	0.51
1:A:343:PHE:CD1	1:A:518:GLN:HG2	2.46	0.51
1:A:424:PRO:HG3	8:A:597:FU1:H4A	1.91	0.51
1:A:204:ARG:HH22	1:A:290:GLU:HB2	1.76	0.51
1:A:407:MET:HB3	1:A:501:MET:HE3	1.93	0.51
1:A:140:PHE:N	1:A:141:PRO:HD3	2.25	0.51
1:A:424:PRO:HG3	8:A:597:FU1:H2	1.92	0.50
1:A:417:LEU:HD21	4:A:605:HEM:HMB1	1.93	0.50
1:A:407:MET:CB	1:A:501:MET:HE3	2.40	0.50
1:A:94:GLN:O	1:A:569:ALA:CB	2.59	0.50
1:A:255:ARG:CG	8:A:596:FU1:H4A	2.42	0.50
1:A:240:ILE:HG12	1:A:381:PHE:O	2.11	0.50
1:A:187:LEU:HD22	1:A:304:ILE:HG22	1.94	0.50
1:A:561:LYS:HG2	5:A:711:IOD:I	2.82	0.50
1:A:204:ARG:O	1:A:214:ALA:HB2	2.11	0.50
1:A:199:LEU:HG	1:A:203:LEU:HD22	1.93	0.50
1:A:540:GLN:HG2	1:A:590:TRP:CZ2	2.46	0.50
1:A:347:PHE:HB3	4:A:605:HEM:HMD2	1.93	0.49
1:A:117:THR:CG2	1:A:118:GLU:CA	2.89	0.49
1:A:324:TRP:CE2	1:A:513:CYS:HA	2.47	0.49
1:A:167:CYS:CB	1:A:168:PRO:CD	2.87	0.49
1:A:203:LEU:HD21	1:A:252:GLY:HA2	1.94	0.49
1:A:123:GLU:HA	1:A:123:GLU:OE2	2.12	0.49
1:A:503:GLU:O	1:A:503:GLU:HG3	1.99	0.49

Continued on next page...

Continued from previous page...

Atom-1	Atom-2	Distance(Å)	Clash(Å)
1:A:271:ARG:O	1:A:272:GLU:C	2.46	0.49
1:A:117:THR:HG22	1:A:118:GLU:CB	2.41	0.49
1:A:155:GLY:HA3	9:A:663:HOH:O	2.13	0.49
1:A:169:THR:HG23	1:A:170:PRO:N	2.27	0.49
1:A:294:GLN:CA	1:A:297:ARG:HB3	2.42	0.49
1:A:281:LYS:HD2	1:A:285:PRO:HA	1.95	0.49
1:A:407:MET:HB3	1:A:501:MET:CE	2.43	0.49
1:A:260:ILE:CG2	1:A:261:LEU:N	2.76	0.48
1:A:356:SER:HB3	1:A:414:THR:CG2	2.42	0.48
1:A:82:ILE:CG2	1:A:82:ILE:O	2.59	0.48
1:A:109:HIS:CE1	8:A:596:FU1:O1	2.66	0.48
1:A:228:PRO:HG2	1:A:250:GLN:HG2	1.94	0.48
1:A:45:ARG:CZ	1:A:49:ALA:HB2	2.43	0.48
1:A:288:ASP:HB3	1:A:291:LYS:CB	2.43	0.48
1:A:572:TYR:CZ	1:A:573:PRO:HB3	2.49	0.48
1:A:213:MET:HG3	1:A:273:HIS:CD2	2.42	0.48
1:A:363:GLU:H	1:A:363:GLU:CD	2.16	0.47
1:A:30:ASN:HB3	1:A:33:SER:O	2.14	0.47
1:A:476:LEU:HD21	1:A:498:ALA:HB1	1.97	0.47
1:A:468:GLN:CD	1:A:474:LYS:HG3	2.35	0.47
1:A:410:ASN:ND2	9:A:616:HOH:O	2.42	0.47
1:A:518:GLN:O	1:A:522:ILE:HG23	2.14	0.46
1:A:407:MET:CB	1:A:501:MET:HE1	2.45	0.46
1:A:63:GLN:NE2	1:A:63:GLN:H	2.12	0.46
1:A:349:PHE:CB	1:A:497:ASN:HD21	2.29	0.46
1:A:381:PHE:CD2	1:A:422:PHE:HD2	2.33	0.46
1:A:168:PRO:HG3	1:A:172:TYR:HB3	1.94	0.46
1:A:284:ASN:ND2	1:A:287:TRP:CH2	2.84	0.46
1:A:229:PHE:HZ	1:A:387:ILE:HD12	1.81	0.46
1:A:284:ASN:ND2	1:A:287:TRP:CZ2	2.85	0.45
1:A:540:GLN:HG2	1:A:590:TRP:CE2	2.51	0.45
1:A:530:TRP:CH2	1:A:531:GLU:HG3	2.51	0.45
1:A:98:LEU:HD12	1:A:98:LEU:O	2.17	0.45
1:A:61:TRP:CH2	1:A:135:GLN:HG2	2.51	0.45
1:A:208:SER:CB	2:A:598:NAG:H62	2.47	0.45
1:A:476:LEU:O	1:A:480:LEU:HB2	2.16	0.45
1:A:166:VAL:HG23	1:A:167:CYS:N	2.32	0.45
1:A:117:THR:CB	1:A:162:ARG:O	2.62	0.45
1:A:398:GLY:HA3	9:A:691:HOH:O	2.17	0.45
1:A:112:ASP:OD2	4:A:605:HEM:O1D	2.35	0.45
1:A:253:ASP:CG	1:A:255:ARG:HH11	2.20	0.45
1:A:594:GLU:O	1:A:595:ASN:CB	2.65	0.45

Continued on next page...

Continued from previous page...

Atom-1	Atom-2	Distance(Å)	Clash(Å)
1:A:66:THR:HB	1:A:70:PHE:N	2.32	0.45
1:A:504:ARG:HA	6:A:722:EDO:H22	1.98	0.44
1:A:85:TYR:CD2	1:A:411:LYS:HA	2.52	0.44
1:A:197:PRO:HA	1:A:200:ALA:HB3	1.99	0.44
1:A:260:ILE:HG23	1:A:261:LEU:N	2.32	0.44
1:A:96:ARG:HH22	6:A:722:EDO:H21	1.83	0.44
1:A:139:CYS:C	1:A:141:PRO:HD3	2.38	0.44
1:A:530:TRP:CE2	1:A:531:GLU:HG3	2.52	0.44
1:A:180:ILE:HG22	1:A:181:ASN:N	2.33	0.44
1:A:165:PHE:CD1	1:A:165:PHE:N	2.86	0.44
1:A:6:CYS:HB2	1:A:7:GLY:HA3	1.98	0.44
1:A:368:ARG:O	1:A:372:ALA:HB2	2.18	0.44
1:A:360:ARG:NH2	1:A:371:GLU:O	2.51	0.44
1:A:202:ARG:HG3	1:A:202:ARG:O	2.18	0.44
1:A:438:LEU:HD21	1:A:493:TRP:HE3	1.83	0.44
1:A:79:SER:HA	1:A:83:VAL:CG2	2.47	0.43
1:A:76:ARG:NH2	1:A:150:LYS:HD2	2.32	0.43
1:A:108:ASP:CG	4:A:605:HEM:HMD3	2.37	0.43
1:A:279:GLU:H	1:A:279:GLU:HG2	1.65	0.43
1:A:43:LEU:HG	1:A:181:ASN:HB2	2.01	0.43
1:A:348:ARG:NH1	4:A:605:HEM:HBA2	2.34	0.43
1:A:474:LYS:HB2	1:A:474:LYS:HE3	1.52	0.43
1:A:103:TRP:HD1	1:A:312:TYR:CG	2.36	0.43
1:A:255:ARG:HG2	8:A:596:FU1:C4	2.45	0.43
1:A:117:THR:HG22	1:A:118:GLU:CA	2.36	0.43
1:A:21:TYR:CZ	1:A:294:GLN:O	2.71	0.43
1:A:281:LYS:HD3	1:A:292:LEU:HD21	1.99	0.43
1:A:116:GLU:H	1:A:116:GLU:HG3	1.58	0.43
1:A:120:GLY:CA	1:A:123:GLU:CB	2.96	0.43
1:A:351:HIS:CE1	1:A:433:LEU:HD21	2.54	0.43
1:A:367:PRO:HG3	5:A:713:IOD:I	2.89	0.43
1:A:258:GLU:CD	4:A:605:HEM:HMB3	2.36	0.43
1:A:237:CYS:HA	1:A:381:PHE:O	2.19	0.43
1:A:121:SER:HA	1:A:122:SER:HA	1.57	0.43
1:A:288:ASP:OD1	1:A:289:GLY:N	2.52	0.43
1:A:246:VAL:CG2	1:A:388:LYS:HE2	2.49	0.43
1:A:537:THR:O	1:A:538:GLU:C	2.58	0.42
1:A:366:GLN:O	1:A:367:PRO:C	2.55	0.42
1:A:362:ASP:O	1:A:365:TYR:N	2.47	0.42
1:A:168:PRO:HB2	1:A:170:PRO:O	2.19	0.42
1:A:464:LEU:HD22	1:A:468:GLN:HG3	2.00	0.42
1:A:572:TYR:CG	1:A:573:PRO:HA	2.54	0.42

Continued on next page...

Continued from previous page...

Atom-1	Atom-2	Distance(Å)	Clash(Å)
1:A:322:GLN:HE21	1:A:327:ARG:HH21	1.68	0.42
1:A:572:TYR:HA	1:A:573:PRO:HA	1.71	0.42
1:A:541:ARG:HA	1:A:544:LEU:HB2	2.01	0.42
1:A:21:TYR:CE1	1:A:294:GLN:O	2.72	0.42
1:A:24:ILE:HD13	1:A:200:ALA:CB	2.36	0.42
1:A:188:ASP:O	1:A:189:ALA:CB	2.68	0.42
1:A:308:THR:HA	1:A:312:TYR:HB3	2.00	0.42
1:A:341:ASN:HB3	1:A:446:MET:HE1	2.01	0.42
1:A:16:ASP:HB2	1:A:19:SER:HB2	2.00	0.42
1:A:164:GLY:O	1:A:179:GLN:HA	2.19	0.42
1:A:113:PHE:CE2	1:A:115:PRO:HG3	2.55	0.42
1:A:289:GLY:O	1:A:292:LEU:HB2	2.20	0.42
1:A:221:ASP:HB2	1:A:226:TYR:CZ	2.54	0.42
1:A:175:LEU:HD23	1:A:175:LEU:HA	1.92	0.42
1:A:549:PHE:O	1:A:553:ILE:HG13	2.19	0.42
1:A:442:ARG:NH2	1:A:491:ASP:OD2	2.51	0.42
1:A:104:GLY:O	1:A:108:ASP:HB2	2.20	0.42
1:A:319:SER:HB3	1:A:503:GLU:HG2	2.01	0.42
1:A:257:SER:O	1:A:381:PHE:HA	2.20	0.42
1:A:39:ALA:O	1:A:40:ASN:HB2	2.19	0.42
1:A:202:ARG:HH12	1:A:231:ASN:HB2	1.85	0.41
1:A:124:HIS:O	1:A:128:GLN:N	2.47	0.41
1:A:255:ARG:HA	8:A:597:FU1:C5	2.35	0.41
1:A:98:LEU:HD11	1:A:101:MET:HE2	2.01	0.41
1:A:244:ALA:HB1	1:A:388:LYS:HE3	2.01	0.41
1:A:255:ARG:HG2	8:A:596:FU1:H2	2.01	0.41
1:A:392:ILE:HG13	1:A:393:ASP:N	2.33	0.41
1:A:27:ASP:O	1:A:28:CYS:CB	2.42	0.41
1:A:198:SEP:O2P	1:A:199:LEU:CD1	2.69	0.41
1:A:275:ARG:NH1	1:A:276:LEU:HD13	2.34	0.41
1:A:537:THR:OG1	1:A:540:GLN:HB2	2.20	0.41
1:A:199:LEU:C	1:A:201:SER:N	2.73	0.41
1:A:460:GLN:HA	1:A:461:PRO:HD2	1.95	0.41
1:A:494:ILE:HA	1:A:494:ILE:HD12	1.81	0.41
1:A:272:GLU:HG3	1:A:276:LEU:CD2	2.39	0.41
1:A:464:LEU:O	1:A:468:GLN:HG3	2.21	0.41
1:A:187:LEU:HA	1:A:187:LEU:HD23	1.90	0.41
1:A:10:VAL:HG21	1:A:41:ARG:NH2	2.36	0.41
8:A:596:FU1:H2	8:A:597:FU1:H3	2.03	0.40
1:A:146:LYS:HE3	1:A:147:ASN:OD1	2.21	0.40
1:A:532:ASN:OD1	1:A:533:PRO:HD2	2.21	0.40
1:A:198:SEP:O2P	1:A:199:LEU:HD12	2.21	0.40

Continued on next page...

Continued from previous page...

Atom-1	Atom-2	Distance(Å)	Clash(Å)
1:A:184:THR:OG1	1:A:188:ASP:OD2	2.39	0.40
1:A:158:MET:CE	1:A:432:ASP:H	2.34	0.40
1:A:82:ILE:O	1:A:82:ILE:HG22	2.22	0.40

There are no symmetry-related clashes.

5.3 Torsion angles

5.3.1 Protein backbone ⓘ

In the following table, the Percentiles column shows the percent Ramachandran outliers of the chain as a percentile score with respect to all X-ray entries followed by that with respect to entries of similar resolution. The Analysed column shows the number of residues for which the backbone conformation was analysed, and the total number of residues.

Mol	Chain	Analysed	Favoured	Allowed	Outliers	Percentiles
1	A	592/595 (100%)	561 (95%)	28 (5%)	3 (0%)	38 70

All (3) Ramachandran outliers are listed below:

Mol	Chain	Res	Type
1	A	390	GLY
1	A	168	PRO
1	A	7	GLY

5.3.2 Protein sidechains ⓘ

In the following table, the Percentiles column shows the percent sidechain outliers of the chain as a percentile score with respect to all X-ray entries followed by that with respect to entries of similar resolution. The Analysed column shows the number of residues for which the sidechain conformation was analysed, and the total number of residues.

Mol	Chain	Analysed	Rotameric	Outliers	Percentiles
1	A	517/517 (100%)	449 (87%)	68 (13%)	6 14

All (68) residues with a non-rotameric sidechain are listed below:

Mol	Chain	Res	Type
1	A	2	TRP
1	A	13	VAL

Continued on next page...

Continued from previous page...

Mol	Chain	Res	Type
1	A	18	ASN
1	A	24	ILE
1	A	27	ASP
1	A	36	LEU
1	A	63	GLN
1	A	81	LYS
1	A	91	VAL
1	A	116	GLU
1	A	119	LEU
1	A	121	SER
1	A	127	VAL
1	A	128	GLN
1	A	137	ASP
1	A	156	LYS
1	A	177	ARG
1	A	187	LEU
1	A	202	ARG
1	A	203	LEU
1	A	218	GLU
1	A	231	ASN
1	A	232	MET
1	A	250	GLN
1	A	254	SER
1	A	255	ARG
1	A	261	LEU
1	A	266	HIS
1	A	268	LEU
1	A	269	LEU
1	A	276	LEU
1	A	279	GLU
1	A	281	LYS
1	A	290	GLU
1	A	292	LEU
1	A	317	LEU
1	A	320	GLU
1	A	327	ARG
1	A	347	PHE
1	A	352	MET
1	A	360	ARG
1	A	368	ARG
1	A	376	LEU
1	A	387	ILE

Continued on next page...

Continued from previous page...

Mol	Chain	Res	Type
1	A	389	ASP
1	A	393	ASP
1	A	414	THR
1	A	464	LEU
1	A	471	LEU
1	A	481	LEU
1	A	486	THR
1	A	503	GLU
1	A	504	ARG
1	A	511	LEU
1	A	520	GLN
1	A	523	ARG
1	A	539	LYS
1	A	540	GLN
1	A	541	ARG
1	A	543	SER
1	A	545	GLN
1	A	551	ARG
1	A	561	LYS
1	A	574	HIS
1	A	580	SER
1	A	585	LEU
1	A	593	ARG
1	A	594	GLU

Some sidechains can be flipped to improve hydrogen bonding and reduce clashes. All (16) such sidechains are listed below:

Mol	Chain	Res	Type
1	A	18	ASN
1	A	63	GLN
1	A	124	HIS
1	A	138	ASN
1	A	147	ASN
1	A	217	GLN
1	A	250	GLN
1	A	266	HIS
1	A	273	HIS
1	A	322	GLN
1	A	497	ASN
1	A	520	GLN
1	A	545	GLN
1	A	558	HIS

Continued on next page...

Continued from previous page...

Mol	Chain	Res	Type
1	A	570	ASN
1	A	574	HIS

5.3.3 RNA ⓘ

There are no RNA chains in this entry.

5.4 Non-standard residues in protein, DNA, RNA chains ⓘ

1 non-standard protein/DNA/RNA residue is modelled in this entry.

In the following table, the Counts columns list the number of bonds (or angles) for which Mogul statistics could be retrieved, the number of bonds (or angles) that are observed in the model and the number of bonds (or angles) that are defined in the chemical component dictionary. The Link column lists molecule types, if any, to which the group is linked. The Z score for a bond length (or angle) is the number of standard deviations the observed value is removed from the expected value. A bond length (or angle) with $|Z| > 2$ is considered an outlier worth inspection. RMSZ is the root-mean-square of all Z scores of the bond lengths (or angles).

Mol	Type	Chain	Res	Link	Bond lengths			Bond angles		
					Counts	RMSZ	$\# Z > 2$	Counts	RMSZ	$\# Z > 2$
1	SEP	A	198	1	9,9,10	4.82	1 (11%)	10,12,14	4.37	6 (60%)

In the following table, the Chirals column lists the number of chiral outliers, the number of chiral centers analysed, the number of these observed in the model and the number defined in the chemical component dictionary. Similar counts are reported in the Torsion and Rings columns. '-' means no outliers of that kind were identified.

Mol	Type	Chain	Res	Link	Chirals	Torsions	Rings
1	SEP	A	198	1	-	0/6/8/10	0/0/0/0

All (1) bond length outliers are listed below:

Mol	Chain	Res	Type	Atoms	Z	Observed(Å)	Ideal(Å)
1	A	198	SEP	O-C	14.21	1.21	1.11

All (6) bond angle outliers are listed below:

Mol	Chain	Res	Type	Atoms	Z	Observed(°)	Ideal(°)
1	A	198	SEP	C-CA-N	-8.86	104.98	113.83
1	A	198	SEP	O3P-P-O1P	-6.33	89.75	110.44

Continued on next page...

Continued from previous page...

Mol	Chain	Res	Type	Atoms	Z	Observed(°)	Ideal(°)
1	A	198	SEP	O3P-P-OG	5.15	120.87	106.65
1	A	198	SEP	OG-CB-CA	4.78	115.46	108.69
1	A	198	SEP	O2P-P-OG	3.08	115.16	106.65
1	A	198	SEP	OG-P-O1P	2.67	114.54	106.71

There are no chirality outliers.

There are no torsion outliers.

There are no ring outliers.

5.5 Carbohydrates

There are no carbohydrates in this entry.

5.6 Ligand geometry

Of 18 ligands modelled in this entry, 11 are monoatomic - leaving 7 for Mogul analysis.

In the following table, the Counts columns list the number of bonds (or angles) for which Mogul statistics could be retrieved, the number of bonds (or angles) that are observed in the model and the number of bonds (or angles) that are defined in the chemical component dictionary. The Link column lists molecule types, if any, to which the group is linked. The Z score for a bond length (or angle) is the number of standard deviations the observed value is removed from the expected value. A bond length (or angle) with $|Z| > 2$ is considered an outlier worth inspection. RMSZ is the root-mean-square of all Z scores of the bond lengths (or angles).

Mol	Type	Chain	Res	Link	Bond lengths			Bond angles		
					Counts	RMSZ	$\# Z > 2$	Counts	RMSZ	$\# Z > 2$
8	FU1	A	596	-	5,5,5	0.50	0	5,5,5	0.44	0
8	FU1	A	597	-	5,5,5	0.51	0	5,5,5	0.44	0
2	NAG	A	598	1	12,14,15	0.95	0	15,19,21	1.44	1 (6%)
2	NAG	A	602	1	12,14,15	0.61	0	15,19,21	0.72	0
4	HEM	A	605	1	49,50,50	3.60	21 (42%)	46,82,82	3.46	23 (50%)
7	SCN	A	615	-	2,2,2	1.58	1 (50%)	1,1,1	0.39	0
6	EDO	A	722	-	3,3,3	0.90	0	2,2,2	1.24	0

In the following table, the Chirals column lists the number of chiral outliers, the number of chiral centers analysed, the number of these observed in the model and the number defined in the chemical component dictionary. Similar counts are reported in the Torsion and Rings columns. '-' means no outliers of that kind were identified.

Mol	Type	Chain	Res	Link	Chirals	Torsions	Rings
8	FU1	A	596	-	-	0/0/5/5	0/1/1/1
8	FU1	A	597	-	-	0/0/5/5	0/1/1/1
2	NAG	A	598	1	-	0/6/23/26	0/1/1/1
2	NAG	A	602	1	-	0/6/23/26	0/1/1/1
4	HEM	A	605	1	-	0/14/114/114	0/0/8/8
7	SCN	A	615	-	-	0/0/0/0	0/0/0/0
6	EDO	A	722	-	-	0/1/1/1	0/0/0/0

All (22) bond length outliers are listed below:

Mol	Chain	Res	Type	Atoms	Z	Observed(Å)	Ideal(Å)
4	A	605	HEM	C2D-C1D	10.48	1.47	1.44
4	A	605	HEM	C4A-C3A	8.79	1.51	1.40
4	A	605	HEM	CHB-C1B	8.67	1.48	1.35
4	A	605	HEM	C1A-C2A	7.52	1.56	1.43
4	A	605	HEM	C2B-C1B	6.74	1.46	1.44
4	A	605	HEM	C3B-CAB	5.72	1.58	1.40
4	A	605	HEM	C3D-C4D	-5.33	1.43	1.44
4	A	605	HEM	CMC-C2C	5.17	1.63	1.47
4	A	605	HEM	FE-NC	4.73	2.15	1.97
4	A	605	HEM	C3C-C2C	-4.60	1.35	1.43
4	A	605	HEM	C3C-CAC	4.50	1.54	1.40
4	A	605	HEM	FE-NB	4.04	2.12	1.97
4	A	605	HEM	C3D-C2D	3.24	1.49	1.43
4	A	605	HEM	CMB-C2B	3.14	1.57	1.47
4	A	605	HEM	CBD-CGD	3.08	1.58	1.50
4	A	605	HEM	FE-NA	3.05	2.05	1.92
4	A	605	HEM	O1D-CGD	2.58	1.31	1.22
4	A	605	HEM	C4C-NC	2.54	1.41	1.38
4	A	605	HEM	C2A-C3A	-2.21	1.31	1.37
7	A	615	SCN	C-S	2.21	1.78	1.63
4	A	605	HEM	CHD-C1D	2.15	1.44	1.39
4	A	605	HEM	CMD-C2D	2.01	1.53	1.47

All (24) bond angle outliers are listed below:

Mol	Chain	Res	Type	Atoms	Z	Observed(°)	Ideal(°)
4	A	605	HEM	C3A-C4A-NA	-8.89	102.70	109.41
4	A	605	HEM	C4A-C3A-C2A	7.54	112.24	107.00
4	A	605	HEM	CHC-C1C-NC	6.66	130.52	124.73
4	A	605	HEM	C3B-C4B-NB	-6.49	109.35	114.00
4	A	605	HEM	C4A-NA-C1A	6.45	115.25	106.76
4	A	605	HEM	CBD-CAD-C3D	-6.07	101.12	114.37

Continued on next page...

Continued from previous page...

Mol	Chain	Res	Type	Atoms	Z	Observed(°)	Ideal(°)
4	A	605	HEM	CHC-C4B-NB	5.18	128.88	124.58
4	A	605	HEM	C1B-NB-C4B	5.02	110.30	105.16
4	A	605	HEM	C4C-NC-C1C	4.88	110.61	105.53
4	A	605	HEM	CHA-C1A-NA	4.73	132.49	124.58
4	A	605	HEM	CHD-C4C-NC	4.28	128.45	124.73
4	A	605	HEM	CHD-C1D-ND	3.80	127.75	124.58
4	A	605	HEM	C2D-C1D-ND	-3.73	108.53	112.93
4	A	605	HEM	C2A-C1A-NA	-3.68	104.63	109.73
2	A	598	NAG	C3-C2-N2	-3.66	106.19	111.76
4	A	605	HEM	CAD-C3D-C4D	3.15	130.19	124.53
4	A	605	HEM	C4D-ND-C1D	2.90	108.13	105.16
4	A	605	HEM	CMA-C3A-C4A	-2.64	124.56	128.62
4	A	605	HEM	C4A-CHB-C1B	-2.64	124.00	127.47
4	A	605	HEM	O1D-CGD-CBD	-2.57	114.18	123.03
4	A	605	HEM	CHB-C4A-NA	2.44	128.66	124.58
4	A	605	HEM	C1D-CHD-C4C	-2.28	120.56	126.57
4	A	605	HEM	CMD-C2D-C3D	-2.22	120.58	125.60
4	A	605	HEM	CMC-C2C-C3C	2.09	131.08	126.16

There are no chirality outliers.

There are no torsion outliers.

There are no ring outliers.

5.7 Other polymers ⓘ

There are no such residues in this entry.

5.8 Polymer linkage issues

There are no chain breaks in this entry.

6 Fit of model and data ⓘ

6.1 Protein, DNA and RNA chains ⓘ

In the following table, the column labelled ‘#RSRZ> 2’ contains the number (and percentage) of RSRZ outliers, followed by percent RSRZ outliers for the chain as percentile scores relative to all X-ray entries and entries of similar resolution. The OWAB column contains the minimum, median, 95th percentile and maximum values of the occupancy-weighted average B-factor per residue. The column labelled ‘Q< 0.9’ lists the number of (and percentage) of residues with an average occupancy less than 0.9.

Mol	Chain	Analysed	<RSRZ>	#RSRZ>2		OWAB(Å ²)	Q<0.9
1	A	595/595 (100%)	0.21	39 (6%)	18 20	27, 49, 86, 101	0

All (39) RSRZ outliers are listed below:

Mol	Chain	Res	Type	RSRZ
1	A	1	SER	23.0
1	A	2	TRP	13.6
1	A	9	PRO	10.2
1	A	13	VAL	8.1
1	A	11	PRO	7.4
1	A	174	SER	6.9
1	A	12	LEU	6.7
1	A	3	GLU	6.4
1	A	4	VAL	6.1
1	A	119	LEU	5.3
1	A	10	VAL	5.2
1	A	595	ASN	5.2
1	A	120	GLY	5.0
1	A	169	THR	4.4
1	A	175	LEU	4.3
1	A	122	SER	3.4
1	A	17	GLU	3.4
1	A	594	GLU	3.4
1	A	170	PRO	3.3
1	A	582	ILE	3.3
1	A	423	GLN	3.1
1	A	118	GLU	3.0
1	A	7	GLY	2.8
1	A	5	GLY	2.8
1	A	431	PHE	2.8
1	A	117	THR	2.8
1	A	425	THR	2.7

Continued on next page...

Continued from previous page...

Mol	Chain	Res	Type	RSRZ
1	A	116	GLU	2.7
1	A	265	VAL	2.7
1	A	131	GLU	2.6
1	A	173	GLN	2.6
1	A	121	SER	2.5
1	A	136	GLY	2.5
1	A	564	LEU	2.4
1	A	64	ARG	2.4
1	A	56	ALA	2.2
1	A	593	ARG	2.2
1	A	124	HIS	2.0
1	A	123	GLU	2.0

6.2 Non-standard residues in protein, DNA, RNA chains ⓘ

In the following table, the Atoms column lists the number of modelled atoms in the group and the number defined in the chemical component dictionary. LLDF column lists the quality of electron density of the group with respect to its neighbouring residues in protein, DNA or RNA chains. The B-factors column lists the minimum, median, 95th percentile and maximum values of B factors of atoms in the group. The column labelled 'Q< 0.9' lists the number of atoms with occupancy less than 0.9.

Mol	Type	Chain	Res	Atoms	RSR	LLDF	B-factors(Å ²)	Q<0.9
1	SEP	A	198	10/11	0.19	0.25	49,55,64,64	0

6.3 Carbohydrates ⓘ

There are no carbohydrates in this entry.

6.4 Ligands ⓘ

In the following table, the Atoms column lists the number of modelled atoms in the group and the number defined in the chemical component dictionary. LLDF column lists the quality of electron density of the group with respect to its neighbouring residues in protein, DNA or RNA chains. The B-factors column lists the minimum, median, 95th percentile and maximum values of B factors of atoms in the group. The column labelled 'Q< 0.9' lists the number of atoms with occupancy less than 0.9.

Mol	Type	Chain	Res	Atoms	RSR	LLDF	B-factors(Å ²)	Q<0.9
8	FU1	A	597	5/5	0.52	8.47	53,54,55,55	5

Continued on next page...

Continued from previous page...

Mol	Type	Chain	Res	Atoms	RSR	LLDF	B-factors(\AA^2)	Q<0.9
8	FU1	A	596	5/5	0.67	7.96	46,47,48,48	5
7	SCN	A	615	3/3	0.58	7.64	33,33,33,34	3
2	NAG	A	602	14/15	0.34	2.06	31,33,36,36	14
2	NAG	A	598	14/15	0.29	1.93	38,42,43,44	14
3	CA	A	1001	1/1	0.20	0.91	42,42,42,42	0
5	IOD	A	715	1/1	0.15	0.89	99,99,99,99	0
4	HEM	A	605	43/43	0.23	0.26	26,28,33,34	0
6	EDO	A	722	4/4	0.13	-0.67	36,37,39,44	0
5	IOD	A	713	1/1	0.10	-1.07	99,99,99,99	0
5	IOD	A	711	1/1	0.07	-1.51	96,96,96,96	0
5	IOD	A	707	1/1	0.08	-2.19	57,57,57,57	0
5	IOD	A	712	1/1	0.12	-2.29	99,99,99,99	0
5	IOD	A	719	1/1	0.05	-2.31	69,69,69,69	0
5	IOD	A	710	1/1	0.06	-2.36	58,58,58,58	0
5	IOD	A	718	1/1	0.04	-2.89	97,97,97,97	0
5	IOD	A	708	1/1	0.09	-2.97	73,73,73,73	0
5	IOD	A	720	1/1	0.05	-4.38	99,99,99,99	0

6.5 Other polymers ⓘ

There are no such residues in this entry.