



# Full wwPDB X-ray Structure Validation Report ⓘ

Feb 28, 2014 – 12:38 AM GMT

PDB ID : 1R6T  
Title : crystal structure of human tryptophanyl-tRNA synthetase  
Authors : Yang, X.-L.; Otero, F.J.; Skene, R.J.; McRee, D.E.; Ribas de Pouplana, L.; Schimmel, P.  
Deposited on : 2003-10-16  
Resolution : 2.10 Å(reported)

This is a full wwPDB validation report for a publicly released PDB entry.  
We welcome your comments at [validation@mail.wwpdb.org](mailto:validation@mail.wwpdb.org)  
A user guide is available at <http://wwpdb.org/ValidationPDFNotes.html>

---

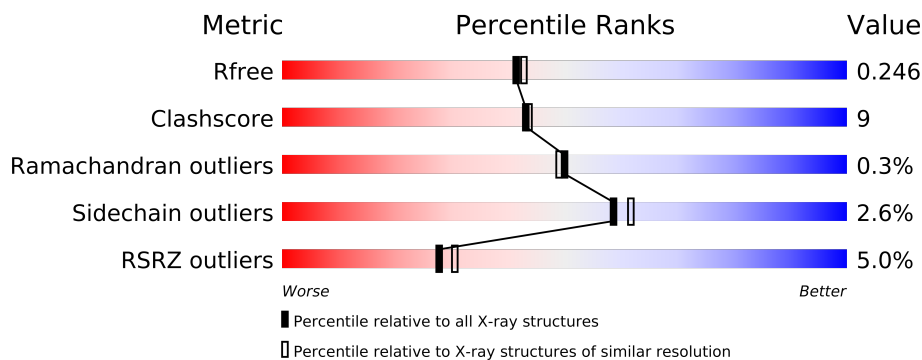
The following versions of software and data (see [references](#)) were used in the production of this report:

MolProbity : 4.02b-467  
Mogul : 1.15 2013  
Xtriage (Phenix) : dev-1323  
EDS : stable22639  
Percentile statistics : 21963  
Refmac : 5.8.0049  
CCP4 : 6.3.0 (Settle)  
Ideal geometry (proteins) : Engh & Huber (2001)  
Ideal geometry (DNA, RNA) : Parkinson et. al. (1996)  
Validation Pipeline (wwPDB-VP) : stable22683

# 1 Overall quality at a glance

The reported resolution of this entry is 2.10 Å.

Percentile scores (ranging between 0-100) for global validation metrics of the entry are shown in the following graphic. The table shows the number of entries on which the scores are based.



Metric	Whole archive (#Entries)	Similar resolution (#Entries, resolution range(Å))
$R_{free}$	66092	3012 (2.10-2.10)
Clashscore	79885	3649 (2.10-2.10)
Ramachandran outliers	78287	3610 (2.10-2.10)
Sidechain outliers	78261	3611 (2.10-2.10)
RSRZ outliers	66119	3013 (2.10-2.10)

The table below summarises the geometric issues observed across the polymeric chains and their fit to the electron density. The red, orange, yellow and green segments on the lower bar indicate the fraction of residues that contain outliers for  $\geq 3$ , 2, 1 and 0 types of geometric quality criteria. The upper red bar (where present) indicates the fraction of residues that have poor fit to the electron density.

Mol	Chain	Length	Quality of chain
1	A	477	
1	B	477	

The following table lists non-polymeric compounds that are outliers for geometric or electron-density-fit criteria:

Mol	Type	Chain	Res	Geometry	Electron density
3	GOL	A	602	-	X
3	GOL	B	601	-	X

## 2 Entry composition

There are 4 unique types of molecules in this entry. The entry contains 6778 atoms, of which 0 are hydrogen and 0 are deuterium.

In the tables below, the ZeroOcc column contains the number of atoms modelled with zero occupancy, the AltConf column contains the number of residues with at least one atom in alternate conformation and the Trace column contains the number of residues modelled with at most 2 atoms.

- Molecule 1 is a protein called Tryptophanyl-tRNA synthetase.

Mol	Chain	Residues	Atoms						ZeroOcc	AltConf	Trace
1	A	440	Total	C	N	O	S	Se	0	0	0
			3509	2242	592	658	5	12			
1	B	362	Total	C	N	O	S	Se	0	0	0
			2926	1879	497	536	5	9			

There are 50 discrepancies between the modelled and reference sequences:

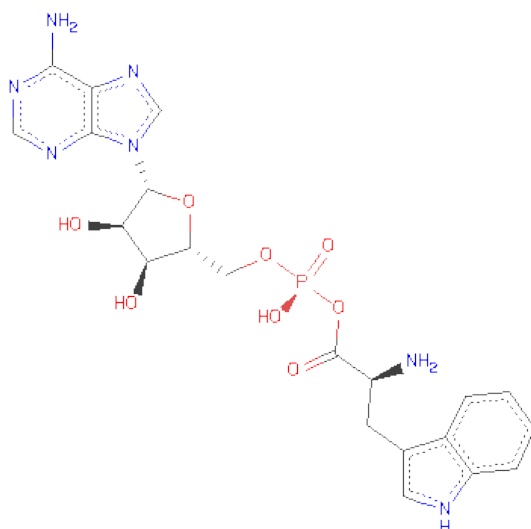
Chain	Residue	Modelled	Actual	Comment	Reference
A	42	MSE	MET	MODIFIED RESIDUE	UNP P23381
A	48	MSE	MET	MODIFIED RESIDUE	UNP P23381
A	143	MSE	MET	MODIFIED RESIDUE	UNP P23381
A	169	MSE	MET	MODIFIED RESIDUE	UNP P23381
A	195	MSE	MET	MODIFIED RESIDUE	UNP P23381
A	213	GLY	SER	ENGINEERED	UNP P23381
A	214	ASP	TYR	ENGINEERED	UNP P23381
A	241	MSE	MET	MODIFIED RESIDUE	UNP P23381
A	243	MSE	MET	MODIFIED RESIDUE	UNP P23381
A	319	MSE	MET	MODIFIED RESIDUE	UNP P23381
A	350	MSE	MET	MODIFIED RESIDUE	UNP P23381
A	401	MSE	MET	MODIFIED RESIDUE	UNP P23381
A	425	MSE	MET	MODIFIED RESIDUE	UNP P23381
A	461	MSE	MET	MODIFIED RESIDUE	UNP P23381
A	467	ALA	-	CLONING ARTIFACT	UNP P23381
A	468	ALA	-	CLONING ARTIFACT	UNP P23381
A	469	ALA	-	CLONING ARTIFACT	UNP P23381
A	470	LEU	-	CLONING ARTIFACT	UNP P23381
A	471	GLU	-	CLONING ARTIFACT	UNP P23381
A	472	HIS	-	EXPRESSION TAG	UNP P23381
A	473	HIS	-	EXPRESSION TAG	UNP P23381
A	474	HIS	-	EXPRESSION TAG	UNP P23381
A	475	HIS	-	EXPRESSION TAG	UNP P23381
A	476	HIS	-	EXPRESSION TAG	UNP P23381
A	477	HIS	-	EXPRESSION TAG	UNP P23381

*Continued on next page...*

Continued from previous page...

Chain	Residue	Modelled	Actual	Comment	Reference
B	42	MSE	MET	MODIFIED RESIDUE	UNP P23381
B	48	MSE	MET	MODIFIED RESIDUE	UNP P23381
B	143	MSE	MET	MODIFIED RESIDUE	UNP P23381
B	169	MSE	MET	MODIFIED RESIDUE	UNP P23381
B	195	MSE	MET	MODIFIED RESIDUE	UNP P23381
B	213	GLY	SER	ENGINEERED	UNP P23381
B	214	ASP	TYR	ENGINEERED	UNP P23381
B	241	MSE	MET	MODIFIED RESIDUE	UNP P23381
B	243	MSE	MET	MODIFIED RESIDUE	UNP P23381
B	319	MSE	MET	MODIFIED RESIDUE	UNP P23381
B	350	MSE	MET	MODIFIED RESIDUE	UNP P23381
B	401	MSE	MET	MODIFIED RESIDUE	UNP P23381
B	425	MSE	MET	MODIFIED RESIDUE	UNP P23381
B	461	MSE	MET	MODIFIED RESIDUE	UNP P23381
B	467	ALA	-	CLONING ARTIFACT	UNP P23381
B	468	ALA	-	CLONING ARTIFACT	UNP P23381
B	469	ALA	-	CLONING ARTIFACT	UNP P23381
B	470	LEU	-	CLONING ARTIFACT	UNP P23381
B	471	GLU	-	CLONING ARTIFACT	UNP P23381
B	472	HIS	-	EXPRESSION TAG	UNP P23381
B	473	HIS	-	EXPRESSION TAG	UNP P23381
B	474	HIS	-	EXPRESSION TAG	UNP P23381
B	475	HIS	-	EXPRESSION TAG	UNP P23381
B	476	HIS	-	EXPRESSION TAG	UNP P23381
B	477	HIS	-	EXPRESSION TAG	UNP P23381

- Molecule 2 is TRYPTOPHANYL-5'AMP (three-letter code: TYM) (formula:  $C_{21}H_{24}N_7O_8P$ ).



Mol	Chain	Residues	Atoms					ZeroOcc	AltConf
2	A	1	Total	C	N	O	P	0	0
			37	21	7	8	1		

- Molecule 3 is GLYCEROL (three-letter code: GOL) (formula:  $C_3H_8O_3$ ).



Mol	Chain	Residues	Atoms			ZeroOcc	AltConf
3	B	1	Total	C	O	0	0
			6	3	3		
3	A	1	Total	C	O	0	0
			6	3	3		

- Molecule 4 is water.

Mol	Chain	Residues	Atoms		ZeroOcc	AltConf
4	A	195	Total	O	0	0
			195	195		
4	B	99	Total	O	0	0
			99	99		



## 4 Data and refinement statistics

Property	Value	Source
Space group	C 1 2 1	Depositor
Cell constants a, b, c, $\alpha$ , $\beta$ , $\gamma$	152.15Å 95.71Å 98.51Å 90.00° 91.62° 90.00°	Depositor
Resolution (Å)	20.00 – 2.10 18.46 – 2.10	Depositor EDS
% Data completeness (in resolution range)	(Not available) (20.00-2.10) 92.3 (18.46-2.10)	Depositor EDS
$R_{merge}$	0.10	Depositor
$R_{sym}$	0.10	Depositor
$\langle I/\sigma(I) \rangle$ <sup>1</sup>	0.80 (at 2.09Å)	Xtriage
Refinement program	CNS	Depositor
R, $R_{free}$	0.208 , 0.239 0.217 , 0.246	Depositor DCC
$R_{free}$ test set	3755 reflections (4.94%)	DCC
Wilson B-factor (Å <sup>2</sup> )	29.6	Xtriage
Anisotropy	0.177	Xtriage
Bulk solvent $k_{sol}$ (e/Å <sup>3</sup> ), $B_{sol}$ (Å <sup>2</sup> )	0.36 , 42.2	EDS
Estimated twinning fraction	0.015 for -h,-k,l	Xtriage
L-test for twinning	$\langle  L  \rangle = 0.49$ , $\langle L^2 \rangle = 0.32$	Xtriage
Outliers	1 of 153939 reflections (0.001%)	Xtriage
$F_o, F_c$ correlation	0.95	EDS
Total number of atoms	6778	wwPDB-VP
Average B, all atoms (Å <sup>2</sup> )	40.0	wwPDB-VP

Xtriage's analysis on translational NCS is as follows: *The largest off-origin peak in the Patterson function is 3.99% of the height of the origin peak. No significant pseudotranslation is detected.*

<sup>1</sup>Intensities estimated from amplitudes.

## 5 Model quality

### 5.1 Standard geometry

Bond lengths and bond angles in the following residue types are not validated in this section: GOL, TYM

The Z score for a bond length (or angle) is the number of standard deviations the observed value is removed from the expected value. A bond length (or angle) with  $|Z| > 5$  is considered an outlier worth inspection. RMSZ is the root-mean-square of all Z scores of the bond lengths (or angles).

Mol	Chain	Bond lengths		Bond angles	
		RMSZ	# Z  >5	RMSZ	# Z  >5
1	A	0.35	0/3574	0.58	0/4800
1	B	0.33	0/2987	0.55	0/4013
All	All	0.34	0/6561	0.57	0/8813

There are no bond length outliers.

There are no bond angle outliers.

There are no chirality outliers.

There are no planarity outliers.

### 5.2 Close contacts

In the following table, the Non-H and H(model) columns list the number of non-hydrogen atoms and hydrogen atoms in the chain respectively. The H(added) column lists the number of hydrogens added by MolProbity. The Clashes column lists the number of clashes within the asymmetric unit, and the number in parentheses is this value normalized per 1000 atoms of the molecule in the chain. The Symm-Clashes column gives symmetry related clashes, in the same way as for the Clashes column.

Mol	Chain	Non-H	H(model)	H(added)	Clashes	Symm-Clashes
1	A	3509	0	3475	67	0
1	B	2926	0	2893	51	0
2	A	37	0	23	1	0
3	A	6	0	7	0	0
3	B	6	0	7	1	0
4	A	195	0	0	2	0
4	B	99	0	0	3	0
All	All	6778	0	6405	114	0

Clashscore is defined as the number of clashes calculated for the entry per 1000 atoms (including



hydrogens) of the entry. The overall clashscore for this entry is 9.

All (114) close contacts within the same asymmetric unit are listed below.

Atom-1	Atom-2	Distance(Å)	Clash(Å)
1:A:24:ARG:HH11	1:A:24:ARG:HB3	1.31	0.94
1:A:24:ARG:NH1	1:A:24:ARG:HB3	1.86	0.89
1:B:393:ASN:HD22	1:B:396:VAL:HG22	1.38	0.88
1:A:102:LYS:HE2	1:A:102:LYS:HA	1.58	0.84
1:B:164:PRO:HB2	4:B:1293:HOH:O	1.87	0.73
1:A:254:ILE:HD11	1:A:289:PHE:HE2	1.55	0.71
1:A:432:LYS:O	1:A:436:GLU:HG3	1.90	0.71
1:A:169:MSE:HE2	1:A:173:HIS:HB3	1.73	0.71
1:B:113:ASP:OD1	1:B:115:GLU:HG2	1.93	0.69
1:B:393:ASN:ND2	1:B:396:VAL:HG22	2.06	0.69
1:B:139:SER:HB3	1:B:336:HIS:HB2	1.74	0.68
1:A:364:THR:OG1	1:A:367:GLN:HG3	1.95	0.67
1:A:295:GLN:HG3	1:A:463:PRO:HB2	1.75	0.67
1:B:140:HIS:HD2	1:B:143:MSE:H	1.43	0.66
1:B:140:HIS:CD2	1:B:143:MSE:H	2.15	0.64
1:A:175:ILE:HB	1:A:176:PRO:HD3	1.79	0.63
1:A:440:PRO:O	1:A:444:GLU:HG3	1.98	0.63
1:B:100:TYR:HA	1:B:103:LEU:HD23	1.81	0.62
1:A:9:LEU:HD11	1:A:54:ALA:HB2	1.80	0.60
1:A:254:ILE:HD11	1:A:289:PHE:CE2	2.37	0.60
1:A:33:LYS:HE3	1:A:205:ASP:O	2.01	0.59
1:A:274:CYS:SG	1:A:277:LYS:HG3	2.43	0.58
1:B:199:GLU:HB2	1:B:280:PHE:CZ	2.39	0.58
1:A:381:ARG:H	1:A:387:HIS:HD2	1.52	0.58
1:B:381:ARG:H	1:B:387:HIS:HD2	1.51	0.58
1:B:144:ASN:HB2	4:B:1005:HOH:O	2.04	0.57
1:A:145:GLN:HE21	1:A:145:GLN:H	1.52	0.56
1:A:207:THR:OG1	1:A:210:GLN:HG3	2.05	0.56
1:B:162:ARG:HH11	1:B:162:ARG:HG2	1.70	0.56
1:A:50:TYR:HD2	1:A:57:ASP:O	1.90	0.55
1:A:310:ALA:HB3	2:A:501:TYM:O2'	2.06	0.55
1:A:255:GLN:NE2	4:A:1296:HOH:O	2.41	0.53
1:B:164:PRO:HA	1:B:218:ASN:OD1	2.09	0.53
1:A:147:LEU:O	1:A:151:GLU:HG3	2.10	0.52
1:B:431:LYS:O	1:B:435:ILE:HG13	2.10	0.52
1:A:442:ILE:O	1:A:446:GLN:HG3	2.10	0.52
1:A:234:ILE:O	1:A:461:MSE:HA	2.10	0.52
1:B:169:MSE:HE2	1:B:361:LEU:CD1	2.40	0.52
1:A:383:THR:OG1	1:A:386:GLU:HG3	2.09	0.52
1:B:435:ILE:O	1:B:439:GLN:HG3	2.10	0.52

*Continued on next page...*

*Continued from previous page...*

Atom-1	Atom-2	Distance(Å)	Clash(Å)
1:A:145:GLN:HE21	1:A:145:GLN:N	2.08	0.51
1:A:259:THR:HA	1:B:274:CYS:HA	1.93	0.51
1:A:169:MSE:HE2	1:A:173:HIS:CB	2.40	0.50
1:B:381:ARG:H	1:B:387:HIS:CD2	2.29	0.50
1:B:234:ILE:O	1:B:461:MSE:HA	2.11	0.50
1:A:137:PHE:CZ	1:A:337:SER:HB3	2.48	0.49
1:B:160:THR:O	1:B:193:ILE:HA	2.12	0.49
1:B:454:ASP:HA	1:B:457:VAL:HG12	1.94	0.49
1:A:294:PRO:HG2	1:A:295:GLN:NE2	2.28	0.49
1:B:444:GLU:HB3	1:B:448:ARG:HH12	1.76	0.49
1:B:162:ARG:HD3	1:B:163:GLY:N	2.28	0.48
1:B:364:THR:O	1:B:368:ILE:HG13	2.13	0.48
1:A:417:ARG:HH11	1:A:417:ARG:HG2	1.78	0.48
1:A:240:TYR:OH	1:A:295:GLN:NE2	2.47	0.48
1:A:383:THR:HG1	1:A:386:GLU:HG3	1.79	0.47
1:A:29:GLY:O	1:A:204:LYS:HE3	2.14	0.47
1:B:115:GLU:CD	1:B:115:GLU:H	2.18	0.46
1:B:397:ASP:O	1:B:401:MSE:HG3	2.15	0.46
1:A:164:PRO:O	1:A:200:LYS:HE3	2.15	0.46
1:A:103:LEU:HD13	1:A:311:ILE:HD13	1.97	0.46
1:A:133:ARG:NH1	1:A:410:ASP:OD2	2.49	0.46
1:A:253:LYS:HE3	1:B:208:LEU:HD22	1.97	0.46
1:B:440:PRO:O	1:B:444:GLU:HG3	2.16	0.46
1:B:162:ARG:NH1	1:B:162:ARG:HG2	2.31	0.46
1:B:356:ASN:HD22	1:B:371:LYS:HE2	1.80	0.46
1:A:397:ASP:O	1:A:401:MSE:HG3	2.15	0.45
1:B:393:ASN:HD22	1:B:396:VAL:CG2	2.18	0.45
1:A:102:LYS:CE	1:A:102:LYS:HA	2.38	0.45
1:B:344:GLN:HA	1:B:377:PHE:HB2	1.98	0.45
1:A:297:PHE:O	1:A:298:ARG:HB2	2.16	0.45
1:A:126:GLN:HG3	1:A:186:VAL:HG12	1.99	0.45
1:B:442:ILE:O	1:B:446:GLN:HG3	2.16	0.45
1:A:302:ASP:N	1:A:302:ASP:OD2	2.50	0.45
1:A:231:LYS:NZ	1:A:231:LYS:HB2	2.32	0.45
1:B:297:PHE:O	1:B:298:ARG:HB2	2.18	0.44
1:A:143:MSE:CG	1:A:335:LEU:HD21	2.48	0.44
1:A:141:ARG:HD2	1:A:334:LEU:HD13	2.00	0.44
1:B:444:GLU:HB3	1:B:448:ARG:NH1	2.32	0.44
1:B:381:ARG:HB2	1:B:387:HIS:HB2	1.99	0.43
1:B:384:ILE:O	1:B:388:ARG:HG2	2.18	0.43
1:B:129:HIS:HB2	1:B:182:TRP:CD2	2.52	0.43
1:A:251:VAL:O	1:A:255:GLN:HG3	2.19	0.43

*Continued on next page...*

*Continued from previous page...*

Atom-1	Atom-2	Distance(Å)	Clash(Å)
1:A:294:PRO:HA	1:A:298:ARG:O	2.18	0.43
1:A:417:ARG:HG2	1:A:417:ARG:NH1	2.33	0.43
1:B:330:PRO:HD2	4:B:1214:HOH:O	2.19	0.43
1:A:206:LEU:HD13	1:A:211:ALA:HB2	2.01	0.43
1:B:207:THR:HA	3:B:601:GOL:H12	2.01	0.43
1:A:449:ARG:HD2	4:A:1297:HOH:O	2.18	0.43
1:A:384:ILE:O	1:A:388:ARG:HG2	2.19	0.43
1:A:173:HIS:O	1:A:176:PRO:HD2	2.19	0.42
1:A:241:MSE:SE	1:A:247:PHE:HD2	2.52	0.42
1:A:164:PRO:HG3	1:A:195:MSE:HE3	2.01	0.42
1:B:233:PHE:CZ	1:B:235:PHE:HB3	2.55	0.42
1:B:113:ASP:CG	1:B:115:GLU:HG2	2.40	0.42
1:B:397:ASP:OD2	1:B:399:SER:HB2	2.20	0.42
1:B:153:LYS:HZ3	1:B:153:LYS:HA	1.85	0.42
1:A:162:ARG:O	1:A:164:PRO:HD3	2.20	0.41
1:A:250:ASN:O	1:A:254:ILE:HG12	2.20	0.41
1:B:457:VAL:HG13	1:B:458:LYS:N	2.34	0.41
1:A:295:GLN:HG3	1:A:463:PRO:CB	2.46	0.41
1:B:153:LYS:O	1:B:155:PRO:HD3	2.21	0.41
1:A:86:ASP:OD2	1:A:86:ASP:C	2.59	0.41
1:B:196:THR:HB	1:B:199:GLU:HB3	2.02	0.41
1:A:248:TYR:CG	1:B:241:MSE:HG2	2.56	0.41
1:A:169:MSE:CE	1:A:173:HIS:HB3	2.48	0.41
1:A:52:ALA:C	1:A:54:ALA:H	2.23	0.41
1:B:372:VAL:O	1:B:376:ALA:HB3	2.21	0.40
1:A:153:LYS:N	1:A:153:LYS:HE2	2.36	0.40
1:A:52:ALA:C	1:A:54:ALA:N	2.75	0.40
1:A:255:GLN:HB3	1:B:276:GLY:CA	2.52	0.40
1:A:164:PRO:O	1:A:200:LYS:HG3	2.21	0.40
1:A:159:TYR:CZ	1:A:287:PRO:HB2	2.57	0.40
1:A:175:ILE:N	1:A:175:ILE:HD12	2.37	0.40
1:B:425:MSE:HG3	1:B:429:GLU:CD	2.42	0.40

There are no symmetry-related clashes.

## 5.3 Torsion angles

### 5.3.1 Protein backbone ⓘ

In the following table, the Percentiles column shows the percent Ramachandran outliers of the chain as a percentile score with respect to all X-ray entries followed by that with respect to entries

of similar resolution. The Analysed column shows the number of residues for which the backbone conformation was analysed, and the total number of residues.

Mol	Chain	Analysed	Favoured	Allowed	Outliers	Percentiles	
1	A	436/477 (91%)	423 (97%)	11 (2%)	2 (0%)	38	33
1	B	358/477 (75%)	346 (97%)	12 (3%)	0	100	100
All	All	794/954 (83%)	769 (97%)	23 (3%)	2 (0%)	50	49

All (2) Ramachandran outliers are listed below:

Mol	Chain	Res	Type
1	A	58	TYR
1	A	166	SER

### 5.3.2 Protein sidechains ⓘ

In the following table, the Percentiles column shows the percent sidechain outliers of the chain as a percentile score with respect to all X-ray entries followed by that with respect to entries of similar resolution. The Analysed column shows the number of residues for which the sidechain conformation was analysed, and the total number of residues.

Mol	Chain	Analysed	Rotameric	Outliers	Percentiles	
1	A	382/400 (96%)	368 (96%)	14 (4%)	45	45
1	B	319/400 (80%)	315 (99%)	4 (1%)	80	85
All	All	701/800 (88%)	683 (97%)	18 (3%)	59	62

All (18) residues with a non-rotameric sidechain are listed below:

Mol	Chain	Res	Type
1	A	12	LEU
1	A	102	LYS
1	A	103	LEU
1	A	143	MSE
1	A	145	GLN
1	A	153	LYS
1	A	156	PHE
1	A	159	TYR
1	A	218	ASN
1	A	236	SER
1	A	295	GLN
1	A	361	LEU
1	A	385	GLU

*Continued on next page...*

*Continued from previous page...*

Mol	Chain	Res	Type
1	A	464	ARG
1	B	153	LYS
1	B	162	ARG
1	B	236	SER
1	B	415	GLN

Some sidechains can be flipped to improve hydrogen bonding and reduce clashes. All (13) such sidechains are listed below:

Mol	Chain	Res	Type
1	A	118	ASN
1	A	130	HIS
1	A	145	GLN
1	A	295	GLN
1	A	387	HIS
1	B	140	HIS
1	B	255	GLN
1	B	261	ASN
1	B	284	GLN
1	B	336	HIS
1	B	356	ASN
1	B	387	HIS
1	B	393	ASN

### 5.3.3 RNA ⓘ

There are no RNA chains in this entry.

## 5.4 Non-standard residues in protein, DNA, RNA chains ⓘ

There are no non-standard protein/DNA/RNA residues in this entry.

### 5.5 Carbohydrates ⓘ

There are no carbohydrates in this entry.

### 5.6 Ligand geometry ⓘ

3 ligands are modelled in this entry.

In the following table, the Counts columns list the number of bonds (or angles) for which Mogul statistics could be retrieved, the number of bonds (or angles) that are observed in the model and the number of bonds (or angles) that are defined in the chemical component dictionary. The Link column lists molecule types, if any, to which the group is linked. The Z score for a bond length (or angle) is the number of standard deviations the observed value is removed from the expected value. A bond length (or angle) with  $|Z| > 2$  is considered an outlier worth inspection. RMSZ is the root-mean-square of all Z scores of the bond lengths (or angles).

Mol	Type	Chain	Res	Link	Bond lengths			Bond angles		
					Counts	RMSZ	$\# Z  > 2$	Counts	RMSZ	$\# Z  > 2$
2	TYM	A	501	-	41,41,41	1.28	2 (4%)	61,61,61	0.86	1 (1%)
3	GOL	A	602	-	5,5,5	0.22	0	5,5,5	1.85	3 (60%)
3	GOL	B	601	-	5,5,5	0.27	0	5,5,5	1.86	3 (60%)

In the following table, the Chirals column lists the number of chiral outliers, the number of chiral centers analysed, the number of these observed in the model and the number defined in the chemical component dictionary. Similar counts are reported in the Torsion and Rings columns. '-' means no outliers of that kind were identified.

Mol	Type	Chain	Res	Link	Chirals	Torsions	Rings
2	TYM	A	501	-	-	0/21/39/39	0/1/5/5
3	GOL	A	602	-	-	0/4/4/4	0/0/0/0
3	GOL	B	601	-	-	0/4/4/4	0/0/0/0

All (2) bond length outliers are listed below:

Mol	Chain	Res	Type	Atoms	Z	Observed(Å)	Ideal(Å)
2	A	501	TYM	OPP-C	6.10	1.45	1.37
2	A	501	TYM	CZ3-CE3	2.15	1.41	1.36

All (7) bond angle outliers are listed below:

Mol	Chain	Res	Type	Atoms	Z	Observed(°)	Ideal(°)
3	A	602	GOL	O2-C2-C1	2.54	119.78	108.22
3	B	601	GOL	O2-C2-C1	2.46	119.41	108.22
3	A	602	GOL	O2-C2-C3	2.44	119.36	108.22
3	B	601	GOL	O2-C2-C3	2.42	119.26	108.22
3	B	601	GOL	C3-C2-C1	2.28	121.33	111.26
3	A	602	GOL	C3-C2-C1	2.18	120.86	111.26
2	A	501	TYM	O4'-C1'-N9	-2.01	106.57	108.44

There are no chirality outliers.

There are no torsion outliers.

There are no ring outliers.

## 5.7 Other polymers ⓘ

There are no such residues in this entry.

## 5.8 Polymer linkage issues

There are no chain breaks in this entry.

## 6 Fit of model and data ⓘ

### 6.1 Protein, DNA and RNA chains ⓘ

In the following table, the column labelled ‘#RSRZ > 2’ contains the number (and percentage) of RSRZ outliers, followed by percent RSRZ outliers for the chain as percentile scores relative to all X-ray entries and entries of similar resolution. The OWAB column contains the minimum, median, 95<sup>th</sup> percentile and maximum values of the occupancy-weighted average B-factor per residue. The column labelled ‘Q < 0.9’ lists the number of (and percentage) of residues with an average occupancy less than 0.9.

Mol	Chain	Analysed	<RSRZ>	#RSRZ > 2		OWAB(Å <sup>2</sup> )	Q < 0.9
1	A	440/477 (92%)	0.00	15 (3%)	43 47	22, 35, 63, 96	7 (1%)
1	B	362/477 (75%)	0.26	25 (6%)	17 18	22, 38, 72, 92	7 (1%)
All	All	802/954 (84%)	0.12	40 (4%)	28 30	22, 36, 72, 96	14 (1%)

All (40) RSRZ outliers are listed below:

Mol	Chain	Res	Type	RSRZ
1	B	167	GLU	7.2
1	B	390	PHE	5.4
1	B	383	THR	5.2
1	A	56	GLU	5.1
1	A	7	ALA	5.0
1	A	467	ALA	4.3
1	B	345	GLY	4.2
1	B	97	GLY	4.2
1	B	166	SER	4.1
1	B	382	ASP	3.9
1	A	167	GLU	3.5
1	B	389	GLN	3.5
1	A	59	LYS	3.4
1	B	298	ARG	3.3
1	B	385	GLU	3.2
1	A	298	ARG	3.0
1	B	316	TYR	2.9
1	B	366	LYS	2.8
1	B	163	GLY	2.8
1	B	420	TYR	2.7
1	A	299	ASP	2.7
1	B	386	GLU	2.7
1	B	467	ALA	2.6
1	B	168	ALA	2.4

*Continued on next page...*



*Continued from previous page...*

Mol	Chain	Res	Type	RSRZ
1	B	368	ILE	2.4
1	B	434	LEU	2.4
1	B	359	ILE	2.3
1	A	57	ASP	2.3
1	A	52	ALA	2.2
1	B	381	ARG	2.2
1	A	166	SER	2.2
1	B	387	HIS	2.1
1	B	377	PHE	2.1
1	A	55	GLY	2.0
1	B	299	ASP	2.0
1	A	12	LEU	2.0
1	B	344	GLN	2.0
1	A	10	LEU	2.0
1	A	11	GLU	2.0
1	A	8	SER	2.0

## 6.2 Non-standard residues in protein, DNA, RNA chains ⓘ

There are no non-standard protein/DNA/RNA residues in this entry.

## 6.3 Carbohydrates ⓘ

There are no carbohydrates in this entry.

## 6.4 Ligands ⓘ

In the following table, the Atoms column lists the number of modelled atoms in the group and the number defined in the chemical component dictionary. LLDF column lists the quality of electron density of the group with respect to its neighbouring residues in protein, DNA or RNA chains. The B-factors column lists the minimum, median, 95<sup>th</sup> percentile and maximum values of B factors of atoms in the group. The column labelled 'Q < 0.9' lists the number of atoms with occupancy less than 0.9.

Mol	Type	Chain	Res	Atoms	RSR	LLDF	B-factors(Å <sup>2</sup> )	Q<0.9
3	GOL	A	602	6/6	0.20	4.77	55,56,58,60	0
3	GOL	B	601	6/6	0.21	3.75	56,59,60,61	0
2	TYM	A	501	37/37	0.07	-2.01	21,25,32,33	0

## 6.5 Other polymers ⓘ

There are no such residues in this entry.