



Full wwPDB X-ray Structure Validation Report

Feb 28, 2014 – 03:38 PM GMT

PDB ID : 3RBU
Title : N-terminally AviTEV-tagged Human Glutamate Carboxypeptidase II in complex with 2-PMPA
Authors : Tykvart, J.; Sacha, P.; Barinka, C.; Starkova, J.; Knedlik, T.; Lubkowski, J.; Konvalinka, J.
Deposited on : 2011-03-30
Resolution : 1.60 Å(reported)

This is a full wwPDB validation report for a publicly released PDB entry.
We welcome your comments at validation@mail.wwpdb.org
A user guide is available at <http://wwpdb.org/ValidationPDFNotes.html>

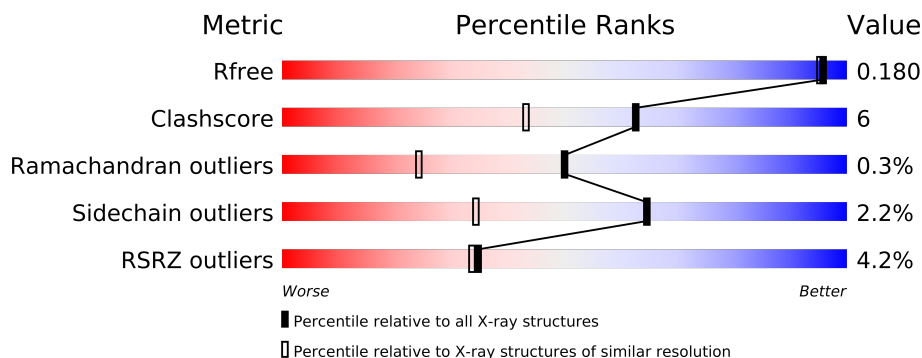
The following versions of software and data (see [references](#)) were used in the production of this report:

MolProbity : 4.02b-467
Mogul : 1.15 2013
Xtriage (Phenix) : dev-1323
EDS : stable22639
Percentile statistics : 21963
Refmac : 5.8.0049
CCP4 : 6.3.0 (Settle)
Ideal geometry (proteins) : Engh & Huber (2001)
Ideal geometry (DNA, RNA) : Parkinson et. al. (1996)
Validation Pipeline (wwPDB-VP) : stable22683

1 Overall quality at a glance

The reported resolution of this entry is 1.60 Å.

Percentile scores (ranging between 0-100) for global validation metrics of the entry are shown in the following graphic. The table shows the number of entries on which the scores are based.



Metric	Whole archive (#Entries)	Similar resolution (#Entries, resolution range(Å))
R_{free}	66092	1872 (1.60-1.60)
Clashscore	79885	2199 (1.60-1.60)
Ramachandran outliers	78287	2126 (1.60-1.60)
Sidechain outliers	78261	2125 (1.60-1.60)
RSRZ outliers	66119	1872 (1.60-1.60)

The table below summarises the geometric issues observed across the polymeric chains and their fit to the electron density. The red, orange, yellow and green segments on the lower bar indicate the fraction of residues that contain outliers for ≥ 3 , 2, 1 and 0 types of geometric quality criteria. The upper red bar (where present) indicates the fraction of residues that have poor fit to the electron density.

Mol	Chain	Length	Quality of chain
1	A	739	

The following table lists non-polymeric compounds that are outliers for geometric or electron-density-fit criteria:

Mol	Type	Chain	Res	Geometry	Electron density
3	NAG	A	1759	-	X
3	NAG	A	1760	-	X
9	G88	A	1800	-	X

2 Entry composition

There are 10 unique types of molecules in this entry. The entry contains 6770 atoms, of which 0 are hydrogen and 0 are deuterium.

In the tables below, the ZeroOcc column contains the number of atoms modelled with zero occupancy, the AltConf column contains the number of residues with at least one atom in alternate conformation and the Trace column contains the number of residues modelled with at most 2 atoms.

- Molecule 1 is a protein called Glutamate carboxypeptidase 2.

Mol	Chain	Residues	Atoms					ZeroOcc	AltConf	Trace
			Total	C	N	O	S			
1	A	691	5863	3779	972	1088	24	0	64	0

There are 32 discrepancies between the modelled and reference sequences:

Chain	Residue	Modelled	Actual	Comment	Reference
A	12	ARG	-	EXPRESSION TAG	UNP Q04609
A	13	SER	-	EXPRESSION TAG	UNP Q04609
A	14	GLY	-	EXPRESSION TAG	UNP Q04609
A	15	LEU	-	EXPRESSION TAG	UNP Q04609
A	16	ASN	-	EXPRESSION TAG	UNP Q04609
A	17	ASP	-	EXPRESSION TAG	UNP Q04609
A	18	ILE	-	EXPRESSION TAG	UNP Q04609
A	19	PHE	-	EXPRESSION TAG	UNP Q04609
A	20	GLU	-	EXPRESSION TAG	UNP Q04609
A	21	ALA	-	EXPRESSION TAG	UNP Q04609
A	22	GLN	-	EXPRESSION TAG	UNP Q04609
A	23	LYS	-	EXPRESSION TAG	UNP Q04609
A	24	ILE	-	EXPRESSION TAG	UNP Q04609
A	25	GLU	-	EXPRESSION TAG	UNP Q04609
A	26	TRP	-	EXPRESSION TAG	UNP Q04609
A	27	HIS	-	EXPRESSION TAG	UNP Q04609
A	28	GLU	-	EXPRESSION TAG	UNP Q04609
A	29	GLY	-	EXPRESSION TAG	UNP Q04609
A	30	SER	-	EXPRESSION TAG	UNP Q04609
A	31	GLY	-	EXPRESSION TAG	UNP Q04609
A	32	SER	-	EXPRESSION TAG	UNP Q04609
A	33	GLY	-	EXPRESSION TAG	UNP Q04609
A	34	SER	-	EXPRESSION TAG	UNP Q04609
A	35	GLU	-	EXPRESSION TAG	UNP Q04609
A	36	ASN	-	EXPRESSION TAG	UNP Q04609
A	37	LEU	-	EXPRESSION TAG	UNP Q04609
A	38	TYR	-	EXPRESSION TAG	UNP Q04609

Continued on next page...

Continued from previous page...

Chain	Residue	Modelled	Actual	Comment	Reference
A	39	PHE	-	EXPRESSION TAG	UNP Q04609
A	40	GLN	-	EXPRESSION TAG	UNP Q04609
A	41	GLY	-	EXPRESSION TAG	UNP Q04609
A	42	ARG	-	EXPRESSION TAG	UNP Q04609
A	43	SER	-	EXPRESSION TAG	UNP Q04609

- Molecule 2 is a polymer of unknown type called SUGAR (2-MER).

Mol	Chain	Residues	Atoms				ZeroOcc	AltConf
2	A	2	Total	C	N	O	0	0
			28	16	2	10		
2	A	2	Total	C	N	O	0	0
			28	16	2	10		

There are 64 discrepancies between the modelled and reference sequences:

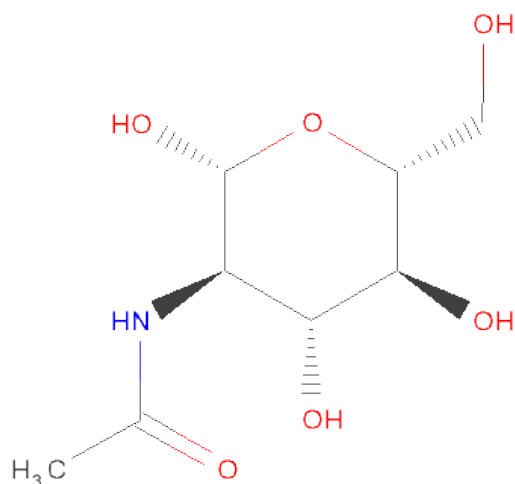
Chain	Residue	Modelled	Actual	Comment	Reference
A	12	ARG	-	EXPRESSION TAG	UNP Q04609
A	13	SER	-	EXPRESSION TAG	UNP Q04609
A	14	GLY	-	EXPRESSION TAG	UNP Q04609
A	15	LEU	-	EXPRESSION TAG	UNP Q04609
A	16	ASN	-	EXPRESSION TAG	UNP Q04609
A	17	ASP	-	EXPRESSION TAG	UNP Q04609
A	18	ILE	-	EXPRESSION TAG	UNP Q04609
A	19	PHE	-	EXPRESSION TAG	UNP Q04609
A	20	GLU	-	EXPRESSION TAG	UNP Q04609
A	21	ALA	-	EXPRESSION TAG	UNP Q04609
A	22	GLN	-	EXPRESSION TAG	UNP Q04609
A	23	LYS	-	EXPRESSION TAG	UNP Q04609
A	24	ILE	-	EXPRESSION TAG	UNP Q04609
A	25	GLU	-	EXPRESSION TAG	UNP Q04609
A	26	TRP	-	EXPRESSION TAG	UNP Q04609
A	27	HIS	-	EXPRESSION TAG	UNP Q04609
A	28	GLU	-	EXPRESSION TAG	UNP Q04609
A	29	GLY	-	EXPRESSION TAG	UNP Q04609
A	30	SER	-	EXPRESSION TAG	UNP Q04609
A	31	GLY	-	EXPRESSION TAG	UNP Q04609
A	32	SER	-	EXPRESSION TAG	UNP Q04609
A	33	GLY	-	EXPRESSION TAG	UNP Q04609
A	34	SER	-	EXPRESSION TAG	UNP Q04609
A	35	GLU	-	EXPRESSION TAG	UNP Q04609
A	36	ASN	-	EXPRESSION TAG	UNP Q04609

Continued on next page...

Continued from previous page...

Chain	Residue	Modelled	Actual	Comment	Reference
A	37	LEU	-	EXPRESSION TAG	UNP Q04609
A	38	TYR	-	EXPRESSION TAG	UNP Q04609
A	39	PHE	-	EXPRESSION TAG	UNP Q04609
A	40	GLN	-	EXPRESSION TAG	UNP Q04609
A	41	GLY	-	EXPRESSION TAG	UNP Q04609
A	42	ARG	-	EXPRESSION TAG	UNP Q04609
A	43	SER	-	EXPRESSION TAG	UNP Q04609
A	12	ARG	-	EXPRESSION TAG	UNP Q04609
A	13	SER	-	EXPRESSION TAG	UNP Q04609
A	14	GLY	-	EXPRESSION TAG	UNP Q04609
A	15	LEU	-	EXPRESSION TAG	UNP Q04609
A	16	ASN	-	EXPRESSION TAG	UNP Q04609
A	17	ASP	-	EXPRESSION TAG	UNP Q04609
A	18	ILE	-	EXPRESSION TAG	UNP Q04609
A	19	PHE	-	EXPRESSION TAG	UNP Q04609
A	20	GLU	-	EXPRESSION TAG	UNP Q04609
A	21	ALA	-	EXPRESSION TAG	UNP Q04609
A	22	GLN	-	EXPRESSION TAG	UNP Q04609
A	23	LYS	-	EXPRESSION TAG	UNP Q04609
A	24	ILE	-	EXPRESSION TAG	UNP Q04609
A	25	GLU	-	EXPRESSION TAG	UNP Q04609
A	26	TRP	-	EXPRESSION TAG	UNP Q04609
A	27	HIS	-	EXPRESSION TAG	UNP Q04609
A	28	GLU	-	EXPRESSION TAG	UNP Q04609
A	29	GLY	-	EXPRESSION TAG	UNP Q04609
A	30	SER	-	EXPRESSION TAG	UNP Q04609
A	31	GLY	-	EXPRESSION TAG	UNP Q04609
A	32	SER	-	EXPRESSION TAG	UNP Q04609
A	33	GLY	-	EXPRESSION TAG	UNP Q04609
A	34	SER	-	EXPRESSION TAG	UNP Q04609
A	35	GLU	-	EXPRESSION TAG	UNP Q04609
A	36	ASN	-	EXPRESSION TAG	UNP Q04609
A	37	LEU	-	EXPRESSION TAG	UNP Q04609
A	38	TYR	-	EXPRESSION TAG	UNP Q04609
A	39	PHE	-	EXPRESSION TAG	UNP Q04609
A	40	GLN	-	EXPRESSION TAG	UNP Q04609
A	41	GLY	-	EXPRESSION TAG	UNP Q04609
A	42	ARG	-	EXPRESSION TAG	UNP Q04609
A	43	SER	-	EXPRESSION TAG	UNP Q04609

- Molecule 3 is SUGAR (N-ACETYL-D-GLUCOSAMINE) (three-letter code: NAG) (formula: $C_8H_{15}NO_6$).



Mol	Chain	Residues	Atoms				ZeroOcc	AltConf
3	A	1	Total	C	N	O	0	0
			14	8	1	5		
3	A	1	Total	C	N	O	0	0
			14	8	1	5		
3	A	1	Total	C	N	O	0	0
			14	8	1	5		

- Molecule 4 is a polymer of unknown type called SUGAR (3-MER).

Mol	Chain	Residues	Atoms				ZeroOcc	AltConf
4	A	3	Total	C	N	O	0	0
			39	22	2	15		

There are 32 discrepancies between the modelled and reference sequences:

Chain	Residue	Modelled	Actual	Comment	Reference
A	12	ARG	-	EXPRESSION TAG	UNP Q04609
A	13	SER	-	EXPRESSION TAG	UNP Q04609
A	14	GLY	-	EXPRESSION TAG	UNP Q04609
A	15	LEU	-	EXPRESSION TAG	UNP Q04609
A	16	ASN	-	EXPRESSION TAG	UNP Q04609
A	17	ASP	-	EXPRESSION TAG	UNP Q04609
A	18	ILE	-	EXPRESSION TAG	UNP Q04609
A	19	PHE	-	EXPRESSION TAG	UNP Q04609
A	20	GLU	-	EXPRESSION TAG	UNP Q04609
A	21	ALA	-	EXPRESSION TAG	UNP Q04609
A	22	GLN	-	EXPRESSION TAG	UNP Q04609

Continued on next page...

Continued from previous page...

Chain	Residue	Modelled	Actual	Comment	Reference
A	23	LYS	-	EXPRESSION TAG	UNP Q04609
A	24	ILE	-	EXPRESSION TAG	UNP Q04609
A	25	GLU	-	EXPRESSION TAG	UNP Q04609
A	26	TRP	-	EXPRESSION TAG	UNP Q04609
A	27	HIS	-	EXPRESSION TAG	UNP Q04609
A	28	GLU	-	EXPRESSION TAG	UNP Q04609
A	29	GLY	-	EXPRESSION TAG	UNP Q04609
A	30	SER	-	EXPRESSION TAG	UNP Q04609
A	31	GLY	-	EXPRESSION TAG	UNP Q04609
A	32	SER	-	EXPRESSION TAG	UNP Q04609
A	33	GLY	-	EXPRESSION TAG	UNP Q04609
A	34	SER	-	EXPRESSION TAG	UNP Q04609
A	35	GLU	-	EXPRESSION TAG	UNP Q04609
A	36	ASN	-	EXPRESSION TAG	UNP Q04609
A	37	LEU	-	EXPRESSION TAG	UNP Q04609
A	38	TYR	-	EXPRESSION TAG	UNP Q04609
A	39	PHE	-	EXPRESSION TAG	UNP Q04609
A	40	GLN	-	EXPRESSION TAG	UNP Q04609
A	41	GLY	-	EXPRESSION TAG	UNP Q04609
A	42	ARG	-	EXPRESSION TAG	UNP Q04609
A	43	SER	-	EXPRESSION TAG	UNP Q04609

- Molecule 5 is a polymer of unknown type called SUGAR (4-MER).

Mol	Chain	Residues	Atoms				ZeroOcc	AltConf
5	A	4	Total	C	N	O	0	0
			50	28	2	20		

There are 32 discrepancies between the modelled and reference sequences:

Chain	Residue	Modelled	Actual	Comment	Reference
A	12	ARG	-	EXPRESSION TAG	UNP Q04609
A	13	SER	-	EXPRESSION TAG	UNP Q04609
A	14	GLY	-	EXPRESSION TAG	UNP Q04609
A	15	LEU	-	EXPRESSION TAG	UNP Q04609
A	16	ASN	-	EXPRESSION TAG	UNP Q04609
A	17	ASP	-	EXPRESSION TAG	UNP Q04609
A	18	ILE	-	EXPRESSION TAG	UNP Q04609
A	19	PHE	-	EXPRESSION TAG	UNP Q04609
A	20	GLU	-	EXPRESSION TAG	UNP Q04609
A	21	ALA	-	EXPRESSION TAG	UNP Q04609
A	22	GLN	-	EXPRESSION TAG	UNP Q04609

Continued on next page...

Continued from previous page...

Chain	Residue	Modelled	Actual	Comment	Reference
A	23	LYS	-	EXPRESSION TAG	UNP Q04609
A	24	ILE	-	EXPRESSION TAG	UNP Q04609
A	25	GLU	-	EXPRESSION TAG	UNP Q04609
A	26	TRP	-	EXPRESSION TAG	UNP Q04609
A	27	HIS	-	EXPRESSION TAG	UNP Q04609
A	28	GLU	-	EXPRESSION TAG	UNP Q04609
A	29	GLY	-	EXPRESSION TAG	UNP Q04609
A	30	SER	-	EXPRESSION TAG	UNP Q04609
A	31	GLY	-	EXPRESSION TAG	UNP Q04609
A	32	SER	-	EXPRESSION TAG	UNP Q04609
A	33	GLY	-	EXPRESSION TAG	UNP Q04609
A	34	SER	-	EXPRESSION TAG	UNP Q04609
A	35	GLU	-	EXPRESSION TAG	UNP Q04609
A	36	ASN	-	EXPRESSION TAG	UNP Q04609
A	37	LEU	-	EXPRESSION TAG	UNP Q04609
A	38	TYR	-	EXPRESSION TAG	UNP Q04609
A	39	PHE	-	EXPRESSION TAG	UNP Q04609
A	40	GLN	-	EXPRESSION TAG	UNP Q04609
A	41	GLY	-	EXPRESSION TAG	UNP Q04609
A	42	ARG	-	EXPRESSION TAG	UNP Q04609
A	43	SER	-	EXPRESSION TAG	UNP Q04609

- Molecule 6 is ZINC ION (three-letter code: ZN) (formula: Zn).

Mol	Chain	Residues	Atoms	ZeroOcc	AltConf
6	A	2	Total Zn 2 2	0	0

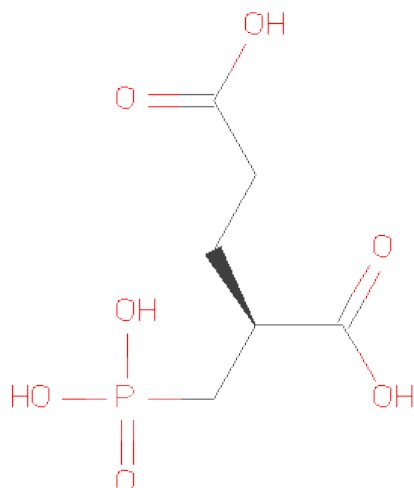
- Molecule 7 is CALCIUM ION (three-letter code: CA) (formula: Ca).

Mol	Chain	Residues	Atoms	ZeroOcc	AltConf
7	A	1	Total Ca 1 1	0	0

- Molecule 8 is CHLORIDE ION (three-letter code: CL) (formula: Cl).

Mol	Chain	Residues	Atoms	ZeroOcc	AltConf
8	A	1	Total Cl 1 1	0	0

- Molecule 9 is (2S)-2-(PHOSPHONOMETHYL)PENTANEDIOICACID (three-letter code: G88) (formula: C₆H₁₁O₇P).



Mol	Chain	Residues	Atoms				ZeroOcc	AltConf
9	A	1	Total	C	O	P	0	0
			14	6	7	1		

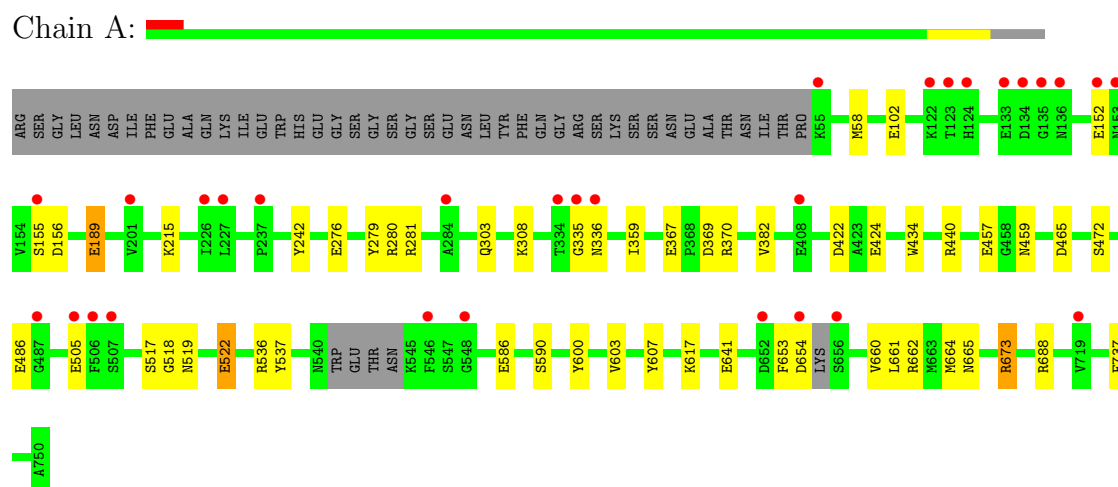
- Molecule 10 is water.

Mol	Chain	Residues	Atoms		ZeroOcc	AltConf
10	A	696	Total	O	0	11
			702	702		

3 Residue-property plots

These plots are drawn for all protein, RNA and DNA chains in the entry. The first graphic for a chain summarises the proportions of errors displayed in the second graphic. The second graphic shows the sequence view annotated by issues in geometry and electron density. Residues are color-coded according to the number of geometric quality criteria for which they contain at least one outlier: green = 0, yellow = 1, orange = 2 and red = 3 or more. A red dot above a residue indicates a poor fit to the electron density ($RSRZ > 2$). Stretches of 2 or more consecutive residues without any outlier are shown as a green connector. Residues present in the sample, but not in the model, are shown in grey.

- Molecule 1: Glutamate carboxypeptidase 2



4 Data and refinement statistics

Property	Value	Source
Space group	I 2 2 2	Depositor
Cell constants a, b, c, α , β , γ	101.25Å 130.56Å 158.90Å 90.00° 90.00° 90.00°	Depositor
Resolution (Å)	28.46 – 1.60 29.46 – 1.60	Depositor EDS
% Data completeness (in resolution range)	98.3 (28.46-1.60) 98.3 (29.46-1.60)	Depositor EDS
R_{merge}	0.08	Depositor
R_{sym}	(Not available)	Depositor
$\langle I/\sigma(I) \rangle$ ¹	2.82 (at 1.60Å)	Xtriage
Refinement program	REFMAC 5.5.0109	Depositor
R, R_{free}	0.157 , 0.182 0.156 , 0.180	Depositor DCC
R_{free} test set	1363 reflections (1.01%)	DCC
Wilson B-factor (Å ²)	20.9	Xtriage
Anisotropy	0.491	Xtriage
Bulk solvent k_{sol} (e/Å ³), B_{sol} (Å ²)	0.35 , 47.0	EDS
Estimated twinning fraction	No twinning to report.	Xtriage
L-test for twinning	$\langle L \rangle = 0.51$, $\langle L^2 \rangle = 0.35$	Xtriage
Outliers	0 of 135783 reflections	Xtriage
F_o, F_c correlation	0.97	EDS
Total number of atoms	6770	wwPDB-VP
Average B, all atoms (Å ²)	30.0	wwPDB-VP

Xtriage's analysis on translational NCS is as follows: *The largest off-origin peak in the Patterson function is 3.32% of the height of the origin peak. No significant pseudotranslation is detected.*

¹Intensities estimated from amplitudes.

5 Model quality

5.1 Standard geometry

Bond lengths and bond angles in the following residue types are not validated in this section: ZN, BMA, NAG, CL, CA, G88, MAN

The Z score for a bond length (or angle) is the number of standard deviations the observed value is removed from the expected value. A bond length (or angle) with $|Z| > 5$ is considered an outlier worth inspection. RMSZ is the root-mean-square of all Z scores of the bond lengths (or angles).

Mol	Chain	Bond lengths		Bond angles	
		RMSZ	$\# Z > 5$	RMSZ	$\# Z > 5$
1	A	0.87	1/6173 (0.0%)	0.86	7/8346 (0.1%)

All (1) bond length outliers are listed below:

Mol	Chain	Res	Type	Atoms	Z	Observed(Å)	Ideal(Å)
1	A	737	PHE	CD2-CE2	5.08	1.49	1.39

All (7) bond angle outliers are listed below:

Mol	Chain	Res	Type	Atoms	Z	Observed(°)	Ideal(°)
1	A	673	ARG	NE-CZ-NH2	-9.19	115.70	120.30
1	A	440	ARG	NE-CZ-NH2	-8.63	115.99	120.30
1	A	688	ARG	NE-CZ-NH1	-7.48	116.56	120.30
1	A	370	ARG	NE-CZ-NH1	7.29	123.94	120.30
1	A	673	ARG	NE-CZ-NH1	6.02	123.31	120.30
1	A	465	ASP	CB-CG-OD1	5.20	122.98	118.30
1	A	422	ASP	CB-CG-OD1	5.03	122.83	118.30

There are no chirality outliers.

There are no planarity outliers.

5.2 Close contacts

In the following table, the Non-H and H(model) columns list the number of non-hydrogen atoms and hydrogen atoms in the chain respectively. The H(added) column lists the number of hydrogens added by MolProbity. The Clashes column lists the number of clashes within the asymmetric unit, and the number in parentheses is this value normalized per 1000 atoms of the molecule in the chain. The Symm-Clashes column gives symmetry related clashes, in the same way as for the Clashes column.

Mol	Chain	Non-H	H(model)	H(added)	Clashes	Symm-Clashes
1	A	5863	0	0	34	3
2	A	56	0	0	0	0
3	A	42	0	0	0	0
4	A	39	0	0	0	0
5	A	50	0	0	0	1
6	A	2	0	0	0	0
7	A	1	0	0	0	0
8	A	1	0	0	0	0
9	A	14	0	0	1	0
10	A	702	0	0	10	4
All	All	6770	0	0	34	5

Clashscore is defined as the number of clashes calculated for the entry per 1000 atoms (including hydrogens) of the entry. The overall clashscore for this entry is 6.

All (34) close contacts within the same asymmetric unit are listed below.

Atom-1	Atom-2	Distance(Å)	Clash(Å)
1:A:215[A]:LYS:NZ	10:A:2439:HOH:O	1.85	1.09
1:A:653[B]:PHE:O	1:A:654[B]:ASP:O	1.74	1.05
1:A:457[A]:GLU:CD	1:A:536[A]:ARG:NH1	2.11	1.04
1:A:457[A]:GLU:OE2	1:A:536[A]:ARG:NH1	2.02	0.91
1:A:242:TYR:OH	10:A:2576:HOH:O	1.93	0.87
1:A:660[A]:VAL:O	1:A:664[A]:MET:CG	2.26	0.82
1:A:280[B]:ARG:CA	1:A:281:ARG:N	2.43	0.82
1:A:472[A]:SER:OG	10:A:2795:HOH:O	2.10	0.69
1:A:617:LYS:NZ	10:A:2411:HOH:O	2.25	0.69
1:A:189:GLU:OE2	10:A:2525:HOH:O	2.14	0.65
1:A:280[C]:ARG:N	1:A:280[C]:ARG:C	2.52	0.63
1:A:603[B]:VAL:CG1	1:A:607:TYR:CZ	2.82	0.62
1:A:280[C]:ARG:CB	1:A:280[C]:ARG:N	2.63	0.62
1:A:517:SER:OG	1:A:522[B]:GLU:OE1	2.19	0.60
1:A:457[A]:GLU:OE1	1:A:536[A]:ARG:NH1	2.34	0.59
1:A:156:ASP:N	10:A:2752:HOH:O	2.35	0.58
1:A:308:LYS:NZ	10:A:2351:HOH:O	2.37	0.57
1:A:641[A]:GLU:CG	10:A:2634:HOH:O	2.53	0.56
1:A:369:ASP:OD2	1:A:662[B]:ARG:NH2	2.39	0.55
1:A:654[B]:ASP:OD1	1:A:654[B]:ASP:C	2.46	0.54
1:A:424:GLU:OE2	9:A:1800:G88:C1	2.55	0.54
1:A:603[B]:VAL:CG1	1:A:607:TYR:CE2	2.91	0.54
1:A:280[C]:ARG:CB	1:A:280[C]:ARG:C	2.76	0.53
1:A:359[B]:ILE:CD1	1:A:434:TRP:NE1	2.73	0.52
1:A:653[B]:PHE:O	1:A:654[B]:ASP:C	2.46	0.49
1:A:654[A]:ASP:C	1:A:654[A]:ASP:OD1	2.52	0.47

Continued on next page...

Continued from previous page...

Atom-1	Atom-2	Distance(Å)	Clash(Å)
1:A:459:ASN:ND2	10:A:2707:HOH:O	2.48	0.45
1:A:367:GLU:OE1	1:A:662[A]:ARG:NH1	2.51	0.43
1:A:586[B]:GLU:CD	1:A:590[B]:SER:OG	2.57	0.43
1:A:662[B]:ARG:NE	10:A:2038:HOH:O	2.52	0.42
1:A:661[A]:LEU:O	1:A:665:ASN:N	2.53	0.41
1:A:517:SER:OG	1:A:518:GLY:N	2.54	0.41

All (5) symmetry-related close contacts are listed below. The label for Atom-2 includes the symmetry operator and encoded unit-cell translations to be applied.

Atom-1	Atom-2	Distance(Å)	Clash(Å)
10:A:2125:HOH:O	10:A:2211:HOH:O[2_455]	1.15	1.05
1:A:279[A]:TYR:OH	10:A:2643:HOH:O[2_455]	1.97	0.23
1:A:276[B]:GLU:OE1	5:A:1765:BMA:O2[2_455]	2.02	0.18
10:A:2211:HOH:O	10:A:2767[B]:HOH:O[2_455]	2.06	0.14
1:A:152:GLU:OE2	10:A:2790:HOH:O[7_455]	2.19	0.01

5.3 Torsion angles

5.3.1 Protein backbone ⓘ

In the following table, the Percentiles column shows the percent Ramachandran outliers of the chain as a percentile score with respect to all X-ray entries followed by that with respect to entries of similar resolution. The Analysed column shows the number of residues for which the backbone conformation was analysed, and the total number of residues.

Mol	Chain	Analysed	Favoured	Allowed	Outliers	Percentiles
1	A	746/739 (101%)	732 (98%)	12 (2%)	2 (0%)	50 24

All (2) Ramachandran outliers are listed below:

Mol	Chain	Res	Type
1	A	335	GLY
1	A	382	VAL

5.3.2 Protein sidechains ⓘ

In the following table, the Percentiles column shows the percent sidechain outliers of the chain as a percentile score with respect to all X-ray entries followed by that with respect to entries of similar resolution. The Analysed column shows the number of residues for which the sidechain conformation was analysed, and the total number of residues.

Mol	Chain	Analysed	Rotameric	Outliers	Percentiles	
1	A	651/629 (104%)	635 (98%)	16 (2%)	60	29

All (16) residues with a non-rotameric sidechain are listed below:

Mol	Chain	Res	Type
1	A	58[A]	MET
1	A	58[B]	MET
1	A	102[A]	GLU
1	A	102[B]	GLU
1	A	155	SER
1	A	189	GLU
1	A	303	GLN
1	A	336	ASN
1	A	486	GLU
1	A	505	GLU
1	A	519	ASN
1	A	522[A]	GLU
1	A	522[B]	GLU
1	A	537	TYR
1	A	600	TYR
1	A	673	ARG

Some sidechains can be flipped to improve hydrogen bonding and reduce clashes. There are no such sidechains identified.

5.3.3 RNA ⓘ

There are no RNA chains in this entry.

5.4 Non-standard residues in protein, DNA, RNA chains ⓘ

There are no non-standard protein/DNA/RNA residues in this entry.

5.5 Carbohydrates ⓘ

11 carbohydrates are modelled in this entry.

In the following table, the Counts columns list the number of bonds (or angles) for which Mogul statistics could be retrieved, the number of bonds (or angles) that are observed in the model and the number of bonds (or angles) that are defined in the chemical component dictionary. The Link column lists molecule types, if any, to which the group is linked. The Z score for a bond length

(or angle) is the number of standard deviations the observed value is removed from the expected value. A bond length (or angle) with $|Z| > 2$ is considered an outlier worth inspection. RMSZ is the root-mean-square of all Z scores of the bond lengths (or angles).

Mol	Type	Chain	Res	Link	Bond lengths			Bond angles		
					Counts	RMSZ	$\# Z > 2$	Counts	RMSZ	$\# Z > 2$
2	NAG	A	1755	1,2	12,14,15	0.63	0	15,19,21	1.11	1 (6%)
2	NAG	A	1756	2	12,14,15	0.52	0	15,19,21	0.97	1 (6%)
2	NAG	A	1758	1,2	12,14,15	0.73	0	15,19,21	1.01	0
4	NAG	A	1761	1,4	12,14,15	1.19	1 (8%)	15,19,21	1.43	2 (13%)
4	NAG	A	1762	4	12,14,15	0.59	0	15,19,21	0.83	0
5	NAG	A	1763	1,5	12,14,15	0.93	1 (8%)	15,19,21	1.01	1 (6%)
5	NAG	A	1764	5	12,14,15	0.79	1 (8%)	15,19,21	1.67	4 (26%)
5	BMA	A	1765	5	10,11,12	0.62	0	11,15,17	1.13	2 (18%)
5	MAN	A	1766	5	10,11,12	0.66	0	11,15,17	1.77	2 (18%)
2	NAG	A	1767	2	12,14,15	0.50	0	15,19,21	1.25	2 (13%)
4	BMA	A	1768	4	10,11,12	0.74	0	11,15,17	1.42	1 (9%)

In the following table, the Chirals column lists the number of chiral outliers, the number of chiral centers analysed, the number of these observed in the model and the number defined in the chemical component dictionary. Similar counts are reported in the Torsion and Rings columns. '-' means no outliers of that kind were identified.

Mol	Type	Chain	Res	Link	Chirals	Torsions	Rings
2	NAG	A	1755	1,2	-	0/6/23/26	0/1/1/1
2	NAG	A	1756	2	-	0/6/23/26	0/1/1/1
2	NAG	A	1758	1,2	-	0/6/23/26	0/1/1/1
4	NAG	A	1761	1,4	-	0/6/23/26	0/1/1/1
4	NAG	A	1762	4	-	0/6/23/26	0/1/1/1
5	NAG	A	1763	1,5	-	0/6/23/26	0/1/1/1
5	NAG	A	1764	5	-	0/6/23/26	0/1/1/1
5	BMA	A	1765	5	-	0/2/19/22	0/1/1/1
5	MAN	A	1766	5	-	0/2/19/22	0/1/1/1
2	NAG	A	1767	2	-	0/6/23/26	0/1/1/1
4	BMA	A	1768	4	-	0/2/19/22	0/1/1/1

All (3) bond length outliers are listed below:

Mol	Chain	Res	Type	Atoms	Z	Observed(Å)	Ideal(Å)
4	A	1761	NAG	O7-C7	3.11	1.30	1.23
5	A	1763	NAG	O5-C5	-2.39	1.41	1.45
5	A	1764	NAG	O5-C5	-2.39	1.41	1.45

All (16) bond angle outliers are listed below:

Mol	Chain	Res	Type	Atoms	Z	Observed(°)	Ideal(°)
5	A	1766	MAN	O5-C5-C6	5.25	112.48	106.98
4	A	1768	BMA	O5-C5-C6	3.91	111.08	106.98
5	A	1764	NAG	O5-C5-C4	-3.51	106.20	110.65
4	A	1761	NAG	O5-C5-C4	-3.48	106.24	110.65
2	A	1767	NAG	O5-C5-C6	2.90	110.03	106.98
5	A	1764	NAG	C8-C7-N2	2.71	121.40	116.11
4	A	1761	NAG	O4-C4-C3	-2.51	104.72	110.35
5	A	1764	NAG	C3-C2-N2	-2.45	108.03	111.76
2	A	1756	NAG	C3-C2-N2	-2.37	108.16	111.76
2	A	1755	NAG	O5-C5-C6	2.28	109.37	106.98
2	A	1767	NAG	O4-C4-C5	2.27	115.26	109.28
5	A	1765	BMA	O5-C5-C4	-2.22	107.84	110.65
5	A	1764	NAG	C3-C4-C5	-2.21	106.25	110.20
5	A	1765	BMA	O3-C3-C2	-2.17	105.96	109.94
5	A	1763	NAG	O4-C4-C5	-2.03	103.92	109.28
5	A	1766	MAN	O3-C3-C2	2.00	113.60	109.94

There are no chirality outliers.

There are no torsion outliers.

There are no ring outliers.

5.6 Ligand geometry ⓘ

Of 8 ligands modelled in this entry, 4 are monoatomic - leaving 4 for Mogul analysis.

In the following table, the Counts columns list the number of bonds (or angles) for which Mogul statistics could be retrieved, the number of bonds (or angles) that are observed in the model and the number of bonds (or angles) that are defined in the chemical component dictionary. The Link column lists molecule types, if any, to which the group is linked. The Z score for a bond length (or angle) is the number of standard deviations the observed value is removed from the expected value. A bond length (or angle) with $|Z| > 2$ is considered an outlier worth inspection. RMSZ is the root-mean-square of all Z scores of the bond lengths (or angles).

Mol	Type	Chain	Res	Link	Bond lengths			Bond angles		
					Counts	RMSZ	$\# Z > 2$	Counts	RMSZ	$\# Z > 2$
3	NAG	A	1757	1	12,14,15	0.63	0	15,19,21	1.59	2 (13%)
3	NAG	A	1759	1	12,14,15	0.59	0	15,19,21	1.25	1 (6%)
3	NAG	A	1760	1	12,14,15	0.67	0	15,19,21	1.75	2 (13%)
9	G88	A	1800	6	13,13,13	3.89	3 (23%)	18,18,18	2.63	11 (61%)

In the following table, the Chirals column lists the number of chiral outliers, the number of chiral centers analysed, the number of these observed in the model and the number defined in the chemical component dictionary. Similar counts are reported in the Torsion and Rings columns. '-' means no outliers of that kind were identified.

Mol	Type	Chain	Res	Link	Chirals	Torsions	Rings
3	NAG	A	1757	1	-	0/6/23/26	0/1/1/1
3	NAG	A	1759	1	-	0/6/23/26	0/1/1/1
3	NAG	A	1760	1	-	0/6/23/26	0/1/1/1
9	G88	A	1800	6	-	0/14/14/14	0/0/0/0

All (3) bond length outliers are listed below:

Mol	Chain	Res	Type	Atoms	Z	Observed(Å)	Ideal(Å)
9	A	1800	G88	P1-C1	11.66	1.91	1.79
9	A	1800	G88	C5-C6	-6.41	1.34	1.50
9	A	1800	G88	C1-C2	3.08	1.59	1.54

All (16) bond angle outliers are listed below:

Mol	Chain	Res	Type	Atoms	Z	Observed(°)	Ideal(°)
3	A	1760	NAG	O5-C5-C6	5.71	112.97	106.98
9	A	1800	G88	O3-P1-O2	-5.25	98.55	112.56
3	A	1757	NAG	O5-C5-C6	4.86	112.08	106.98
9	A	1800	G88	O1-P1-O2	-4.02	101.84	112.56
3	A	1759	NAG	O5-C5-C6	3.98	111.16	106.98
9	A	1800	G88	C4-C2-C1	3.61	120.37	110.12
9	A	1800	G88	O3-P1-O1	3.58	119.71	108.35
9	A	1800	G88	O3-P1-C1	3.35	114.82	106.86
9	A	1800	G88	C4-C5-C6	2.73	119.51	112.88
9	A	1800	G88	C4-C2-C3	-2.64	106.18	110.93
3	A	1757	NAG	O5-C5-C4	-2.30	107.73	110.65
9	A	1800	G88	O1-P1-C1	2.26	112.24	106.86
9	A	1800	G88	P1-C1-C2	-2.16	107.00	114.24
9	A	1800	G88	O2-P1-C1	-2.12	106.73	111.20
9	A	1800	G88	O7-C6-C5	2.06	121.50	114.22
3	A	1760	NAG	O7-C7-C8	-2.00	118.13	122.04

There are no chirality outliers.

There are no torsion outliers.

There are no ring outliers.

5.7 Other polymers ⓘ

There are no such residues in this entry.

5.8 Polymer linkage issues

There are no chain breaks in this entry.

6 Fit of model and data ⓘ

6.1 Protein, DNA and RNA chains ⓘ

In the following table, the column labelled ‘#RSRZ> 2’ contains the number (and percentage) of RSRZ outliers, followed by percent RSRZ outliers for the chain as percentile scores relative to all X-ray entries and entries of similar resolution. The OWAB column contains the minimum, median, 95th percentile and maximum values of the occupancy-weighted average B-factor per residue. The column labelled ‘Q< 0.9’ lists the number of (and percentage) of residues with an average occupancy less than 0.9.

Mol	Chain	Analysed	<RSRZ>	#RSRZ>2	OWAB(Å ²)	Q<0.9
1	A	691/739 (93%)	-0.15	30 (4%) 34 33	15, 26, 47, 67	4 (0%)

All (30) RSRZ outliers are listed below:

Mol	Chain	Res	Type	RSRZ
1	A	335	GLY	3.8
1	A	336	ASN	3.8
1	A	506	PHE	3.8
1	A	155	SER	3.7
1	A	153	ASN	3.7
1	A	656[A]	SER	3.6
1	A	226	ILE	3.5
1	A	507	SER	3.5
1	A	505	GLU	3.5
1	A	55	LYS	3.4
1	A	719	VAL	3.3
1	A	487	GLY	3.2
1	A	133	GLU	2.9
1	A	134	ASP	2.9
1	A	201[A]	VAL	2.8
1	A	237	PRO	2.8
1	A	334	THR	2.8
1	A	135	GLY	2.7
1	A	123	THR	2.5
1	A	548	GLY	2.4
1	A	136	ASN	2.3
1	A	122	LYS	2.3
1	A	152	GLU	2.3
1	A	546	PHE	2.3
1	A	654[A]	ASP	2.2
1	A	408	GLU	2.2
1	A	124	HIS	2.2

Continued on next page...

Continued from previous page...

Mol	Chain	Res	Type	RSRZ
1	A	652	ASP	2.1
1	A	284	ALA	2.1
1	A	227	LEU	2.0

6.2 Non-standard residues in protein, DNA, RNA chains ⓘ

There are no non-standard protein/DNA/RNA residues in this entry.

6.3 Carbohydrates ⓘ

In the following table, the Atoms column lists the number of modelled atoms in the group and the number defined in the chemical component dictionary. LLDF column lists the quality of electron density of the group with respect to its neighbouring residues in protein, DNA or RNA chains. The B-factors column lists the minimum, median, 95th percentile and maximum values of B factors of atoms in the group. The column labelled 'Q < 0.9' lists the number of atoms with occupancy less than 0.9.

Mol	Type	Chain	Res	Atoms	RSR	LLDF	B-factors(Å ²)	Q<0.9
4	BMA	A	1768	11/12	0.35	13.44	62,67,69,71	0
2	NAG	A	1756	14/15	0.29	5.36	39,50,55,55	0
5	NAG	A	1764	14/15	0.23	3.14	37,41,51,53	0
2	NAG	A	1767	14/15	0.32	2.97	57,63,69,70	0
2	NAG	A	1755	14/15	0.09	2.15	31,39,47,50	0
5	MAN	A	1766	11/12	0.20	1.75	45,47,51,53	0
2	NAG	A	1758	14/15	0.13	1.70	43,46,55,56	0
5	BMA	A	1765	11/12	0.14	1.02	39,41,44,45	0
4	NAG	A	1762	14/15	0.18	0.31	38,46,51,56	0
5	NAG	A	1763	14/15	0.07	0.29	22,27,36,44	0
4	NAG	A	1761	14/15	0.07	-0.21	28,33,39,42	0

6.4 Ligands ⓘ

In the following table, the Atoms column lists the number of modelled atoms in the group and the number defined in the chemical component dictionary. LLDF column lists the quality of electron density of the group with respect to its neighbouring residues in protein, DNA or RNA chains. The B-factors column lists the minimum, median, 95th percentile and maximum values of B factors of atoms in the group. The column labelled 'Q < 0.9' lists the number of atoms with occupancy less than 0.9.

Continued on next page...

Continued from previous page...

Mol	Type	Chain	Res	Atoms	RSR	LLDF	B-factors(\AA^2)	Q<0.9
-----	------	-------	-----	-------	-----	------	-----------------------------	-------

Mol	Type	Chain	Res	Atoms	RSR	LLDF	B-factors(\AA^2)	Q<0.9
3	NAG	A	1759	14/15	0.23	6.26	68,73,76,77	0
3	NAG	A	1760	14/15	0.18	5.36	31,45,53,54	0
9	G88	A	1800	14/14	0.13	2.25	20,23,42,48	0
3	NAG	A	1757	14/15	0.25	2.00	46,52,58,61	0
7	CA	A	1753	1/1	0.05	0.11	16,16,16,16	0
6	ZN	A	1752	1/1	0.05	-1.47	18,18,18,18	0
8	CL	A	1754	1/1	0.04	-1.82	22,22,22,22	0
6	ZN	A	1751	1/1	0.05	-2.43	19,19,19,19	0

6.5 Other polymers ⓘ

There are no such residues in this entry.