



Full wwPDB X-ray Structure Validation Report ⓘ

Feb 28, 2014 – 12:03 PM GMT

PDB ID : 3ROD
Title : Methyltransferase
Authors : Peng, Y.; Yee, V.C.
Deposited on : 2011-04-25
Resolution : 2.72 Å(reported)

This is a full wwPDB validation report for a publicly released PDB entry.
We welcome your comments at validation@mail.wwpdb.org
A user guide is available at <http://wwpdb.org/ValidationPDFNotes.html>

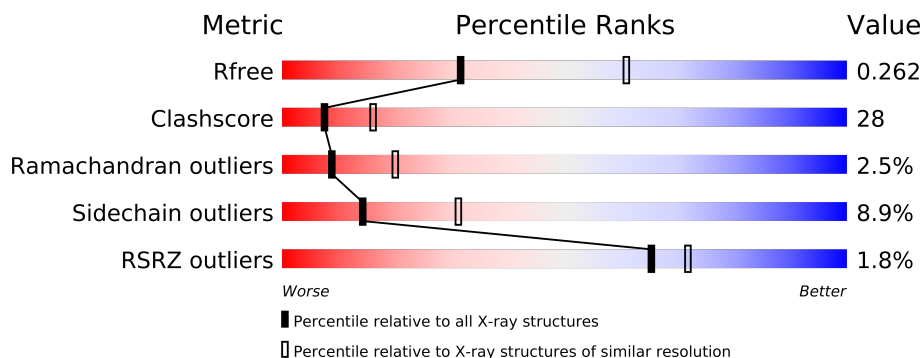
The following versions of software and data (see [references](#)) were used in the production of this report:

MolProbity : 4.02b-467
Mogul : 1.15 2013
Xtriage (Phenix) : dev-1323
EDS : stable22639
Percentile statistics : 21963
Refmac : 5.8.0049
CCP4 : 6.3.0 (Settle)
Ideal geometry (proteins) : Engh & Huber (2001)
Ideal geometry (DNA, RNA) : Parkinson et. al. (1996)
Validation Pipeline (wwPDB-VP) : stable22683

1 Overall quality at a glance

The reported resolution of this entry is 2.72 Å.

Percentile scores (ranging between 0-100) for global validation metrics of the entry are shown in the following graphic. The table shows the number of entries on which the scores are based.



Metric	Whole archive (#Entries)	Similar resolution (#Entries, resolution range(Å))
R_{free}	66092	1770 (2.74-2.70)
Clashscore	79885	2183 (2.74-2.70)
Ramachandran outliers	78287	2147 (2.74-2.70)
Sidechain outliers	78261	2148 (2.74-2.70)
RSRZ outliers	66119	1772 (2.74-2.70)

The table below summarises the geometric issues observed across the polymeric chains and their fit to the electron density. The red, orange, yellow and green segments on the lower bar indicate the fraction of residues that contain outliers for ≥ 3 , 2, 1 and 0 types of geometric quality criteria. The upper red bar (where present) indicates the fraction of residues that have poor fit to the electron density.

Mol	Chain	Length	Quality of chain
1	A	283	
1	B	283	
1	C	283	
1	D	283	

The following table lists non-polymeric compounds that are outliers for geometric or electron-density-fit criteria:

Mol	Type	Chain	Res	Geometry	Electron density
3	NCA	A	302	-	X
3	NCA	B	302	-	X
3	NCA	C	302	-	X
3	NCA	D	302	-	X

2 Entry composition

There are 4 unique types of molecules in this entry. The entry contains 8272 atoms, of which 0 are hydrogen and 0 are deuterium.

In the tables below, the ZeroOcc column contains the number of atoms modelled with zero occupancy, the AltConf column contains the number of residues with at least one atom in alternate conformation and the Trace column contains the number of residues modelled with at most 2 atoms.

- Molecule 1 is a protein called Nicotinamide N-methyltransferase.

Mol	Chain	Residues	Atoms					ZeroOcc	AltConf	Trace
1	A	259	Total	C	N	O	S	0	0	0
			2023	1299	329	384	11			
1	B	259	Total	C	N	O	S	0	0	0
			2023	1299	329	384	11			
1	C	259	Total	C	N	O	S	0	0	0
			2023	1299	329	384	11			
1	D	257	Total	C	N	O	S	0	0	0
			2013	1294	327	381	11			

There are 88 discrepancies between the modelled and reference sequences:

Chain	Residue	Modelled	Actual	Comment	Reference
A	-18	MET	-	EXPRESSION TAG	UNP P40261
A	-17	GLY	-	EXPRESSION TAG	UNP P40261
A	-16	SER	-	EXPRESSION TAG	UNP P40261
A	-15	SER	-	EXPRESSION TAG	UNP P40261
A	-14	HIS	-	EXPRESSION TAG	UNP P40261
A	-13	HIS	-	EXPRESSION TAG	UNP P40261
A	-12	HIS	-	EXPRESSION TAG	UNP P40261
A	-11	HIS	-	EXPRESSION TAG	UNP P40261
A	-10	HIS	-	EXPRESSION TAG	UNP P40261
A	-9	HIS	-	EXPRESSION TAG	UNP P40261
A	-8	SER	-	EXPRESSION TAG	UNP P40261
A	-7	SER	-	EXPRESSION TAG	UNP P40261
A	-6	GLY	-	EXPRESSION TAG	UNP P40261
A	-5	LEU	-	EXPRESSION TAG	UNP P40261
A	-4	VAL	-	EXPRESSION TAG	UNP P40261
A	-3	PRO	-	EXPRESSION TAG	UNP P40261
A	-2	ARG	-	EXPRESSION TAG	UNP P40261
A	-1	GLY	-	EXPRESSION TAG	UNP P40261
A	0	SER	-	EXPRESSION TAG	UNP P40261
A	100	ALA	LYS	ENGINEERED MUTATION	UNP P40261
A	101	ALA	GLU	ENGINEERED MUTATION	UNP P40261

Continued on next page...

Continued from previous page...

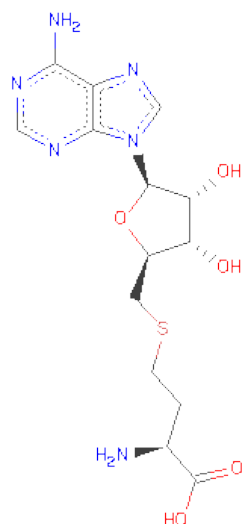
Chain	Residue	Modelled	Actual	Comment	Reference
A	103	ALA	GLU	ENGINEERED MUTATION	UNP P40261
B	-18	MET	-	EXPRESSION TAG	UNP P40261
B	-17	GLY	-	EXPRESSION TAG	UNP P40261
B	-16	SER	-	EXPRESSION TAG	UNP P40261
B	-15	SER	-	EXPRESSION TAG	UNP P40261
B	-14	HIS	-	EXPRESSION TAG	UNP P40261
B	-13	HIS	-	EXPRESSION TAG	UNP P40261
B	-12	HIS	-	EXPRESSION TAG	UNP P40261
B	-11	HIS	-	EXPRESSION TAG	UNP P40261
B	-10	HIS	-	EXPRESSION TAG	UNP P40261
B	-9	HIS	-	EXPRESSION TAG	UNP P40261
B	-8	SER	-	EXPRESSION TAG	UNP P40261
B	-7	SER	-	EXPRESSION TAG	UNP P40261
B	-6	GLY	-	EXPRESSION TAG	UNP P40261
B	-5	LEU	-	EXPRESSION TAG	UNP P40261
B	-4	VAL	-	EXPRESSION TAG	UNP P40261
B	-3	PRO	-	EXPRESSION TAG	UNP P40261
B	-2	ARG	-	EXPRESSION TAG	UNP P40261
B	-1	GLY	-	EXPRESSION TAG	UNP P40261
B	0	SER	-	EXPRESSION TAG	UNP P40261
B	100	ALA	LYS	ENGINEERED MUTATION	UNP P40261
B	101	ALA	GLU	ENGINEERED MUTATION	UNP P40261
B	103	ALA	GLU	ENGINEERED MUTATION	UNP P40261
C	-18	MET	-	EXPRESSION TAG	UNP P40261
C	-17	GLY	-	EXPRESSION TAG	UNP P40261
C	-16	SER	-	EXPRESSION TAG	UNP P40261
C	-15	SER	-	EXPRESSION TAG	UNP P40261
C	-14	HIS	-	EXPRESSION TAG	UNP P40261
C	-13	HIS	-	EXPRESSION TAG	UNP P40261
C	-12	HIS	-	EXPRESSION TAG	UNP P40261
C	-11	HIS	-	EXPRESSION TAG	UNP P40261
C	-10	HIS	-	EXPRESSION TAG	UNP P40261
C	-9	HIS	-	EXPRESSION TAG	UNP P40261
C	-8	SER	-	EXPRESSION TAG	UNP P40261
C	-7	SER	-	EXPRESSION TAG	UNP P40261
C	-6	GLY	-	EXPRESSION TAG	UNP P40261
C	-5	LEU	-	EXPRESSION TAG	UNP P40261
C	-4	VAL	-	EXPRESSION TAG	UNP P40261
C	-3	PRO	-	EXPRESSION TAG	UNP P40261
C	-2	ARG	-	EXPRESSION TAG	UNP P40261
C	-1	GLY	-	EXPRESSION TAG	UNP P40261
C	0	SER	-	EXPRESSION TAG	UNP P40261

Continued on next page...

Continued from previous page...

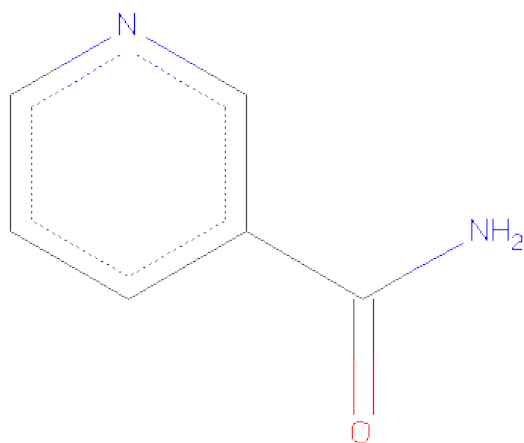
Chain	Residue	Modelled	Actual	Comment	Reference
C	100	ALA	LYS	ENGINEERED MUTATION	UNP P40261
C	101	ALA	GLU	ENGINEERED MUTATION	UNP P40261
C	103	ALA	GLU	ENGINEERED MUTATION	UNP P40261
D	-18	MET	-	EXPRESSION TAG	UNP P40261
D	-17	GLY	-	EXPRESSION TAG	UNP P40261
D	-16	SER	-	EXPRESSION TAG	UNP P40261
D	-15	SER	-	EXPRESSION TAG	UNP P40261
D	-14	HIS	-	EXPRESSION TAG	UNP P40261
D	-13	HIS	-	EXPRESSION TAG	UNP P40261
D	-12	HIS	-	EXPRESSION TAG	UNP P40261
D	-11	HIS	-	EXPRESSION TAG	UNP P40261
D	-10	HIS	-	EXPRESSION TAG	UNP P40261
D	-9	HIS	-	EXPRESSION TAG	UNP P40261
D	-8	SER	-	EXPRESSION TAG	UNP P40261
D	-7	SER	-	EXPRESSION TAG	UNP P40261
D	-6	GLY	-	EXPRESSION TAG	UNP P40261
D	-5	LEU	-	EXPRESSION TAG	UNP P40261
D	-4	VAL	-	EXPRESSION TAG	UNP P40261
D	-3	PRO	-	EXPRESSION TAG	UNP P40261
D	-2	ARG	-	EXPRESSION TAG	UNP P40261
D	-1	GLY	-	EXPRESSION TAG	UNP P40261
D	0	SER	-	EXPRESSION TAG	UNP P40261
D	100	ALA	LYS	ENGINEERED MUTATION	UNP P40261
D	101	ALA	GLU	ENGINEERED MUTATION	UNP P40261
D	103	ALA	GLU	ENGINEERED MUTATION	UNP P40261

- Molecule 2 is S-ADENOSYL-L-HOMOCYSTEINE (three-letter code: SAH) (formula: $C_{14}H_{20}N_6O_5S$).



Mol	Chain	Residues	Atoms					ZeroOcc	AltConf
2	A	1	Total	C	N	O	S	0	0
			26	14	6	5	1		
2	B	1	Total	C	N	O	S	0	0
			26	14	6	5	1		
2	C	1	Total	C	N	O	S	0	0
			26	14	6	5	1		
2	D	1	Total	C	N	O	S	0	0
			26	14	6	5	1		

- Molecule 3 is NICOTINAMIDE (three-letter code: NCA) (formula: C₆H₆N₂O).



Mol	Chain	Residues	Atoms				ZeroOcc	AltConf
3	A	1	Total	C	N	O	0	0
			9	6	2	1		
3	B	1	Total	C	N	O	0	0
			9	6	2	1		
3	C	1	Total	C	N	O	0	0
			9	6	2	1		
3	D	1	Total	C	N	O	0	0
			9	6	2	1		

- Molecule 4 is water.

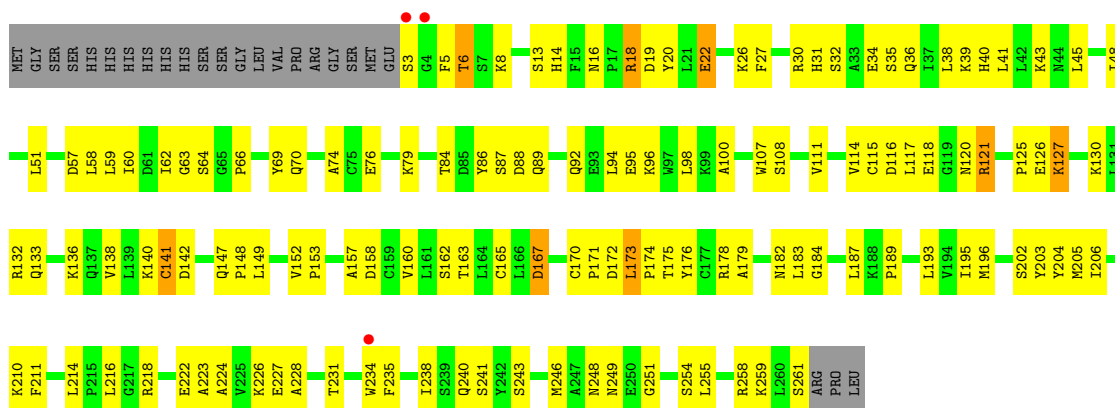
Mol	Chain	Residues	Atoms		ZeroOcc	AltConf
4	A	18	Total	O	0	0
			18	18		
4	B	13	Total	O	0	0
			13	13		
4	C	16	Total	O	0	0
			16	16		
4	D	3	Total	O	0	0
			3	3		

3 Residue-property plots

These plots are drawn for all protein, RNA and DNA chains in the entry. The first graphic for a chain summarises the proportions of errors displayed in the second graphic. The second graphic shows the sequence view annotated by issues in geometry and electron density. Residues are color-coded according to the number of geometric quality criteria for which they contain at least one outlier: green = 0, yellow = 1, orange = 2 and red = 3 or more. A red dot above a residue indicates a poor fit to the electron density ($RSRZ > 2$). Stretches of 2 or more consecutive residues without any outlier are shown as a green connector. Residues present in the sample, but not in the model, are shown in grey.

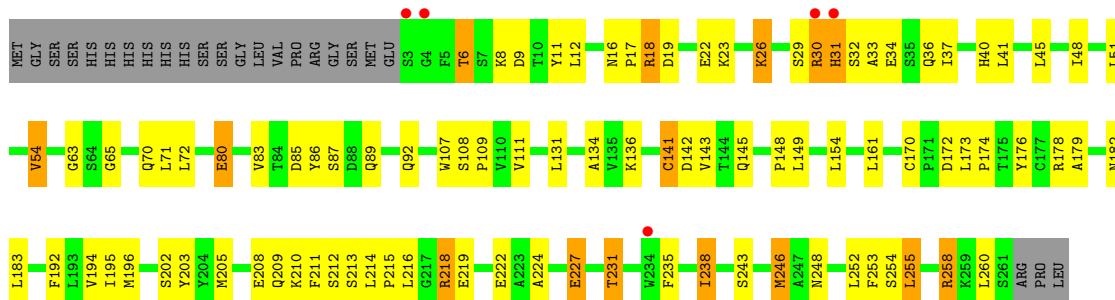
• Molecule 1: Nicotinamide N-methyltransferase

Chain A: 



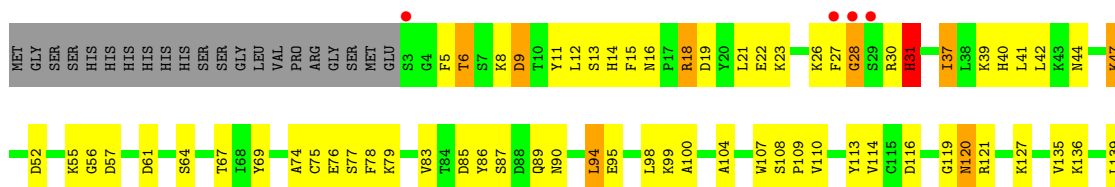
• Molecule 1: Nicotinamide N-methyltransferase

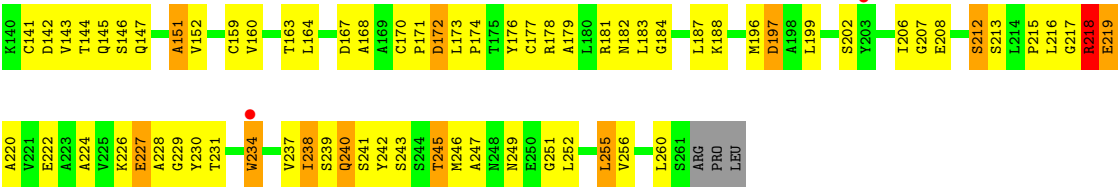
Chain B: 



• Molecule 1: Nicotinamide N-methyltransferase

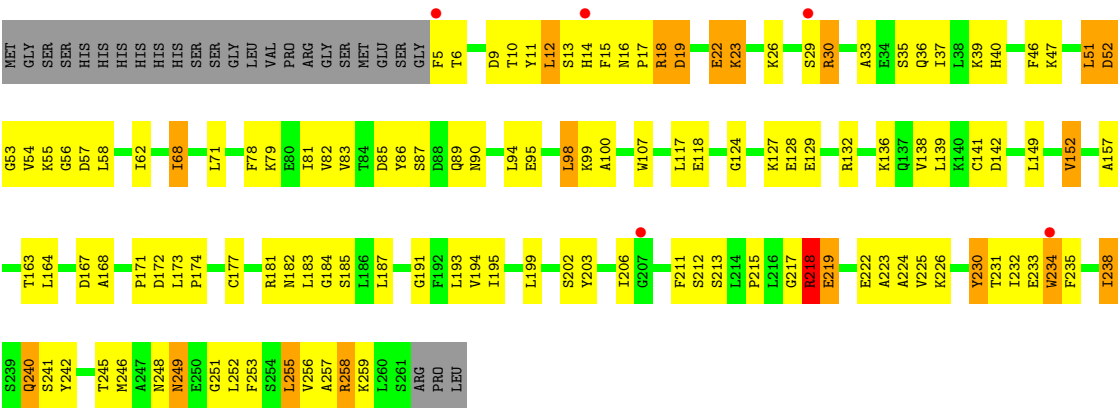
Chain C: 





● Molecule 1: Nicotinamide N-methyltransferase

Chain D:



4 Data and refinement statistics

Property	Value	Source
Space group	P 1	Depositor
Cell constants a, b, c, α , β , γ	60.66Å 61.79Å 74.34Å 106.57° 103.98° 104.14°	Depositor
Resolution (Å)	39.67 – 2.72 39.67 – 2.72	Depositor EDS
% Data completeness (in resolution range)	98.0 (39.67-2.72) 98.1 (39.67-2.72)	Depositor EDS
R_{merge}	0.09	Depositor
R_{sym}	0.09	Depositor
$\langle I/\sigma(I) \rangle$ ¹	2.20 (at 2.73Å)	Xtriage
Refinement program	REFMAC 5.2.0005	Depositor
R, R_{free}	0.205 , 0.264 0.206 , 0.262	Depositor DCC
R_{free} test set	1272 reflections (5.37%)	DCC
Wilson B-factor (Å ²)	41.6	Xtriage
Anisotropy	0.099	Xtriage
Bulk solvent k_{sol} (e/Å ³), B_{sol} (Å ²)	0.32 , 19.3	EDS
Estimated twinning fraction	0.000 for -k,-h,-l	Xtriage
L-test for twinning	$\langle L \rangle = 0.50$, $\langle L^2 \rangle = 0.33$	Xtriage
Outliers	0 of 24956 reflections	Xtriage
F_o, F_c correlation	0.93	EDS
Total number of atoms	8272	wwPDB-VP
Average B, all atoms (Å ²)	36.0	wwPDB-VP

Xtriage's analysis on translational NCS is as follows: *The largest off-origin peak in the Patterson function is 7.52% of the height of the origin peak. No significant pseudotranslation is detected.*

¹Intensities estimated from amplitudes.

5 Model quality

5.1 Standard geometry

Bond lengths and bond angles in the following residue types are not validated in this section: NCA, SAH

The Z score for a bond length (or angle) is the number of standard deviations the observed value is removed from the expected value. A bond length (or angle) with $|Z| > 5$ is considered an outlier worth inspection. RMSZ is the root-mean-square of all Z scores of the bond lengths (or angles).

Mol	Chain	Bond lengths		Bond angles	
		RMSZ	$\# Z > 5$	RMSZ	$\# Z > 5$
1	A	0.85	0/2067	0.81	0/2799
1	B	0.82	0/2067	0.81	0/2799
1	C	0.79	1/2067 (0.0%)	0.83	0/2799
1	D	0.77	0/2057	0.78	0/2786
All	All	0.81	1/8258 (0.0%)	0.81	0/11183

All (1) bond length outliers are listed below:

Mol	Chain	Res	Type	Atoms	Z	Observed(Å)	Ideal(Å)
1	C	47	LYS	CD-CE	5.70	1.65	1.51

There are no bond angle outliers.

There are no chirality outliers.

There are no planarity outliers.

5.2 Close contacts

In the following table, the Non-H and H(model) columns list the number of non-hydrogen atoms and hydrogen atoms in the chain respectively. The H(added) column lists the number of hydrogens added by MolProbity. The Clashes column lists the number of clashes within the asymmetric unit, and the number in parentheses is this value normalized per 1000 atoms of the molecule in the chain. The Symm-Clashes column gives symmetry related clashes, in the same way as for the Clashes column.

Mol	Chain	Non-H	H(model)	H(added)	Clashes	Symm-Clashes
1	A	2023	0	2029	101	0
1	B	2023	0	2029	90	0
1	C	2023	0	2029	133	0
1	D	2013	0	2021	138	0

Continued on next page...

Continued from previous page...

Mol	Chain	Non-H	H(model)	H(added)	Clashes	Symm-Clashes
2	A	26	0	19	2	0
2	B	26	0	19	4	0
2	C	26	0	19	2	0
2	D	26	0	19	2	0
3	A	9	0	6	1	0
3	B	9	0	6	0	0
3	C	9	0	6	1	0
3	D	9	0	6	2	0
4	A	18	0	0	0	0
4	B	13	0	0	0	0
4	C	16	0	0	0	0
4	D	3	0	0	0	0
All	All	8272	0	8208	455	0

Clashscore is defined as the number of clashes calculated for the entry per 1000 atoms (including hydrogens) of the entry. The overall clashscore for this entry is 28.

All (455) close contacts within the same asymmetric unit are listed below.

Atom-1	Atom-2	Distance(Å)	Clash(Å)
1:B:205:MET:SD	1:B:210:LYS:HE2	1.96	1.05
1:A:196:MET:HG2	1:A:254:SER:HB2	1.40	1.03
1:C:47:LYS:HD2	1:C:234:TRP:CH2	1.94	1.02
1:B:45:LEU:HD21	1:B:196:MET:HE2	1.43	0.99
1:C:199:LEU:HD22	1:C:217:GLY:HA2	1.43	0.97
1:C:41:LEU:HD22	1:C:196:MET:HE3	1.46	0.97
1:D:36:GLN:HE22	1:D:39:LYS:HD2	1.32	0.95
1:C:47:LYS:HD2	1:C:234:TRP:CZ3	2.02	0.95
1:A:94:LEU:O	1:A:98:LEU:HD13	1.66	0.95
1:D:47:LYS:HG2	1:D:234:TRP:HH2	1.30	0.93
1:D:172:ASP:OD1	1:D:174:PRO:HD2	1.73	0.87
1:A:121:ARG:NH1	1:A:121:ARG:HB3	1.88	0.87
1:D:57:ASP:HA	1:D:79:LYS:HE2	1.57	0.87
1:D:12:LEU:HD12	1:D:12:LEU:H	1.38	0.87
1:C:47:LYS:HG3	1:D:47:LYS:HD3	1.55	0.87
1:A:202:SER:HB3	1:A:248:ASN:HD21	1.40	0.85
1:D:182:ASN:O	1:D:185:SER:HB3	1.76	0.84
1:D:9:ASP:HA	1:D:12:LEU:HD13	1.60	0.82
1:A:121:ARG:HH21	1:C:30:ARG:HB3	1.44	0.82
1:D:226:LYS:HA	1:D:230:TYR:O	1.79	0.81
1:C:27:PHE:CG	1:C:28:GLY:N	2.49	0.81
1:D:230:TYR:HB3	1:D:258:ARG:O	1.82	0.80
1:A:121:ARG:HH11	1:A:121:ARG:HB3	1.45	0.80

Continued on next page...

Continued from previous page...

Atom-1	Atom-2	Distance(Å)	Clash(Å)
1:D:47:LYS:HG2	1:D:234:TRP:CH2	2.17	0.79
1:D:206:ILE:O	1:D:206:ILE:HG22	1.82	0.79
1:C:41:LEU:HD22	1:C:196:MET:CE	2.13	0.79
1:D:62:ILE:HD12	1:D:141:CYS:SG	2.22	0.79
1:C:23:LYS:HD2	1:C:207:GLY:HA2	1.64	0.78
1:C:47:LYS:CG	1:D:47:LYS:HD3	2.13	0.78
1:C:40:HIS:NE2	1:C:238:ILE:HG21	1.99	0.78
1:B:214:LEU:HD23	1:B:216:LEU:HD11	1.65	0.77
1:A:18:ARG:H	1:A:18:ARG:CD	1.98	0.77
1:A:45:LEU:HD21	1:A:196:MET:CE	2.15	0.77
1:D:187:LEU:HD22	1:D:191:GLY:HA3	1.67	0.77
1:D:13:SER:HB3	1:D:14:HIS:CE1	2.19	0.76
1:D:225:VAL:HG21	1:D:255:LEU:HD21	1.68	0.76
1:D:238:ILE:HD13	1:D:238:ILE:H	1.51	0.76
1:C:219:GLU:H	1:C:219:GLU:CD	1.88	0.76
1:D:5:PHE:N	1:D:212:SER:HG	1.84	0.75
1:B:18:ARG:H	1:B:18:ARG:CD	1.99	0.75
1:D:233:GLU:HB2	1:D:256:VAL:O	1.86	0.74
1:C:47:LYS:HD2	1:C:234:TRP:HH2	1.49	0.74
1:D:255:LEU:HD12	1:D:256:VAL:N	2.02	0.74
1:D:164:LEU:O	3:D:302:NCA:N7	2.20	0.74
1:C:27:PHE:CD2	1:C:28:GLY:N	2.54	0.74
1:D:18:ARG:O	1:D:22:GLU:HB2	1.86	0.74
1:A:205:MET:SD	1:A:210:LYS:HB2	2.27	0.74
1:B:45:LEU:HD21	1:B:196:MET:CE	2.17	0.74
1:C:242:TYR:O	1:C:243:SER:C	2.25	0.72
1:B:194:VAL:O	1:B:195:ILE:HD13	1.90	0.71
1:D:18:ARG:HB2	1:D:18:ARG:HH21	1.56	0.71
1:D:193:LEU:HD11	1:D:195:ILE:HD11	1.73	0.71
1:C:18:ARG:O	1:C:22:GLU:HB2	1.92	0.70
1:D:219:GLU:H	1:D:219:GLU:CD	1.94	0.69
1:D:251:GLY:C	1:D:252:LEU:HD12	2.13	0.69
1:A:45:LEU:HD21	1:A:196:MET:HE2	1.75	0.69
1:A:214:LEU:HD23	1:A:216:LEU:HD11	1.75	0.69
1:A:235:PHE:CE1	1:A:255:LEU:HD23	2.29	0.68
1:D:238:ILE:HD11	1:D:252:LEU:HB2	1.74	0.68
1:D:36:GLN:NE2	1:D:39:LYS:HD2	2.07	0.68
1:A:218:ARG:HD3	1:B:218:ARG:NH2	2.09	0.68
1:D:234:TRP:HB3	1:D:256:VAL:HB	1.74	0.67
1:C:240:GLN:O	1:C:251:GLY:HA2	1.94	0.67
1:B:89:GLN:HA	1:B:92:GLN:HG3	1.76	0.67
1:D:149:LEU:O	1:D:152:VAL:HG22	1.93	0.67

Continued on next page...

Continued from previous page...

Atom-1	Atom-2	Distance(Å)	Clash(Å)
1:A:36:GLN:OE1	1:A:39:LYS:NZ	2.27	0.67
1:B:16:ASN:OD1	1:B:18:ARG:HD3	1.94	0.67
1:D:12:LEU:HD12	1:D:12:LEU:N	2.09	0.67
1:C:160:VAL:HG23	1:C:187:LEU:HG	1.77	0.67
1:B:108:SER:N	1:B:109:PRO:CD	2.58	0.66
1:C:42:LEU:HD13	1:C:113:TYR:HD2	1.60	0.66
1:B:37:ILE:HD13	1:B:252:LEU:HD11	1.77	0.66
1:B:71:LEU:HD11	1:B:83:VAL:CG1	2.25	0.66
1:B:218:ARG:HG2	1:B:235:PHE:CE2	2.31	0.66
1:A:173:LEU:HB3	1:A:174:PRO:HD3	1.78	0.65
1:D:230:TYR:HD1	1:D:258:ARG:O	1.79	0.65
1:C:234:TRP:CD1	1:C:234:TRP:C	2.69	0.65
1:C:61:ASP:OD2	1:C:64:SER:HB3	1.97	0.65
1:C:5:PHE:HD1	1:C:171:PRO:HB3	1.62	0.64
1:B:9:ASP:HA	1:B:12:LEU:HB2	1.79	0.64
1:D:118:GLU:OE1	1:D:127:LYS:NZ	2.25	0.64
1:D:33:ALA:O	1:D:37:ILE:HG13	1.97	0.64
1:C:41:LEU:CD2	1:C:196:MET:HE3	2.27	0.64
1:B:238:ILE:HD13	1:B:238:ILE:O	1.98	0.64
1:D:163:THR:O	2:D:301:SAH:N	2.31	0.63
1:D:234:TRP:CD1	1:D:234:TRP:C	2.70	0.63
1:D:94:LEU:HD22	1:D:98:LEU:HD22	1.80	0.63
1:A:121:ARG:HD2	1:A:121:ARG:H	1.64	0.63
1:D:10:THR:HA	1:D:13:SER:HB2	1.81	0.63
1:D:26:LYS:HB2	1:D:30:ARG:NH2	2.14	0.63
1:C:170:CYS:SG	1:C:176:TYR:HA	2.40	0.62
1:A:107:TRP:O	1:A:111:VAL:HG23	2.00	0.61
1:D:85:ASP:O	1:D:141:CYS:N	2.33	0.61
1:A:27:PHE:HD2	1:A:38:LEU:HD23	1.66	0.61
1:C:163:THR:O	2:C:301:SAH:N	2.34	0.61
1:D:37:ILE:O	1:D:40:HIS:N	2.33	0.61
1:B:71:LEU:HD11	1:B:83:VAL:HG11	1.82	0.61
1:A:27:PHE:CD2	1:A:38:LEU:HD23	2.36	0.61
1:A:223:ALA:O	1:A:227:GLU:HG2	2.00	0.61
1:C:224:ALA:HA	1:C:227:GLU:HB2	1.80	0.61
1:A:45:LEU:HD21	1:A:196:MET:HE1	1.81	0.61
1:C:172:ASP:OD2	1:C:174:PRO:HD2	2.01	0.61
1:D:36:GLN:NE2	1:D:36:GLN:HA	2.15	0.60
1:D:167:ASP:O	1:D:213:SER:HA	2.02	0.60
1:A:63:GLY:O	2:A:301:SAH:N	2.34	0.60
1:D:230:TYR:CD1	1:D:258:ARG:O	2.54	0.60
1:C:37:ILE:CD1	1:C:240:GLN:HG3	2.31	0.60

Continued on next page...

Continued from previous page...

Atom-1	Atom-2	Distance(Å)	Clash(Å)
1:B:8:LYS:HB2	1:B:86:TYR:CE2	2.37	0.60
1:C:255:LEU:HD12	1:C:255:LEU:C	2.21	0.60
1:C:99:LYS:O	1:C:100:ALA:HB3	2.02	0.60
1:B:255:LEU:HD23	1:B:255:LEU:O	2.02	0.59
1:D:240:GLN:O	1:D:251:GLY:HA2	2.01	0.59
1:A:40:HIS:CD2	1:A:238:ILE:HG21	2.36	0.59
1:B:248:ASN:CG	1:B:248:ASN:O	2.40	0.59
1:D:258:ARG:HG2	1:D:258:ARG:NH1	2.17	0.59
1:D:12:LEU:HD11	1:D:86:TYR:CE2	2.37	0.59
1:D:6:THR:H	1:D:212:SER:HB3	1.66	0.59
1:C:15:PHE:HD2	1:C:90:ASN:HD21	1.49	0.59
1:C:56:GLY:O	1:C:78:PHE:HA	2.03	0.59
1:A:167:ASP:OD1	1:A:216:LEU:HD12	2.03	0.59
1:C:94:LEU:O	1:C:98:LEU:HD22	2.02	0.59
1:D:139:LEU:HD12	1:D:149:LEU:HD13	1.83	0.58
1:B:143:VAL:HG12	1:B:183:LEU:HD21	1.84	0.58
1:B:179:ALA:O	1:B:183:LEU:HG	2.03	0.58
1:C:40:HIS:CD2	1:C:238:ILE:HG21	2.38	0.58
1:A:171:PRO:HD2	1:A:175:THR:HG21	1.85	0.58
1:C:164:LEU:HD23	1:C:197:ASP:HA	1.85	0.58
1:B:30:ARG:HD3	1:B:31:HIS:N	2.18	0.58
1:B:30:ARG:O	1:B:32:SER:N	2.37	0.58
1:A:206:ILE:HD12	1:A:211:PHE:CE2	2.38	0.58
1:C:184:GLY:CA	1:C:230:TYR:OH	2.51	0.58
1:B:141:CYS:SG	1:B:142:ASP:N	2.76	0.58
1:B:80:GLU:HB3	1:B:136:LYS:HG3	1.86	0.57
1:D:258:ARG:HG2	1:D:258:ARG:HH11	1.70	0.57
1:A:40:HIS:NE2	1:A:238:ILE:HG21	2.19	0.57
1:D:11:TYR:OH	1:D:168:ALA:HB1	2.04	0.57
1:B:202:SER:HA	1:B:213:SER:O	2.04	0.57
1:C:243:SER:C	1:C:245:THR:H	2.07	0.57
1:C:170:CYS:HB3	1:C:176:TYR:HB2	1.86	0.57
1:A:238:ILE:HG13	1:A:238:ILE:O	2.04	0.57
1:D:19:ASP:O	1:D:23:LYS:HB2	2.05	0.57
1:C:41:LEU:HD21	1:C:252:LEU:HD23	1.85	0.57
1:C:255:LEU:HD12	1:C:256:VAL:N	2.19	0.57
1:D:12:LEU:HD11	1:D:86:TYR:HE2	1.70	0.56
1:C:37:ILE:HD11	1:C:240:GLN:HG3	1.87	0.56
1:D:53:GLY:O	1:D:55:LYS:HG3	2.05	0.56
1:B:161:LEU:CD1	1:B:194:VAL:HB	2.35	0.56
1:B:194:VAL:C	1:B:195:ILE:HD13	2.26	0.56
1:A:170:CYS:SG	1:A:176:TYR:HA	2.45	0.56

Continued on next page...

Continued from previous page...

Atom-1	Atom-2	Distance(Å)	Clash(Å)
1:C:16:ASN:OD1	1:C:18:ARG:HD3	2.06	0.56
1:A:60:ILE:HD13	1:A:157:ALA:HB2	1.88	0.56
1:D:89:GLN:N	1:D:89:GLN:OE1	2.35	0.56
1:A:238:ILE:HD12	1:A:240:GLN:HB3	1.88	0.55
1:D:234:TRP:CD1	1:D:235:PHE:N	2.74	0.55
1:C:18:ARG:HH21	1:C:18:ARG:HB2	1.71	0.55
1:B:214:LEU:HD21	1:B:216:LEU:HD21	1.88	0.55
1:C:47:LYS:HD2	1:C:234:TRP:HZ3	1.65	0.55
1:B:161:LEU:HD13	1:B:194:VAL:HB	1.88	0.55
1:D:213:SER:O	1:D:215:PRO:HD3	2.07	0.55
1:B:218:ARG:HG3	1:B:218:ARG:HH11	1.71	0.55
1:B:196:MET:HG2	1:B:254:SER:HB2	1.89	0.55
1:C:5:PHE:CD1	1:C:171:PRO:HB3	2.41	0.55
1:B:30:ARG:HD3	1:B:31:HIS:H	1.72	0.55
1:B:218:ARG:NE	1:B:222:GLU:OE2	2.40	0.55
1:D:219:GLU:OE1	1:D:219:GLU:N	2.38	0.55
1:C:23:LYS:HZ3	1:C:246:MET:CG	2.19	0.55
1:B:18:ARG:H	1:B:18:ARG:HD2	1.70	0.55
1:C:13:SER:HB2	1:C:14:HIS:ND1	2.22	0.55
1:C:47:LYS:HG3	1:D:47:LYS:CD	2.33	0.55
1:D:5:PHE:N	1:D:171:PRO:HB3	2.22	0.55
1:D:47:LYS:HE2	1:D:52:ASP:OD2	2.07	0.54
1:A:240:GLN:O	1:A:251:GLY:HA2	2.07	0.54
1:B:80:GLU:HB3	1:B:136:LYS:CG	2.38	0.54
1:C:207:GLY:O	1:C:208:GLU:HG2	2.08	0.54
1:D:16:ASN:OD1	1:D:18:ARG:HD3	2.08	0.54
1:B:208:GLU:O	1:B:208:GLU:HG3	2.07	0.54
1:C:42:LEU:HD13	1:C:113:TYR:CD2	2.39	0.54
1:C:173:LEU:N	1:C:174:PRO:HD3	2.23	0.54
1:C:31:HIS:CE1	1:C:39:LYS:NZ	2.76	0.53
1:C:142:ASP:HA	2:C:301:SAH:N1	2.22	0.53
1:A:64:SER:O	2:A:301:SAH:HA	2.08	0.53
1:A:76:GLU:OE2	1:A:130:LYS:HD3	2.09	0.53
1:C:173:LEU:N	1:C:174:PRO:CD	2.71	0.53
1:B:107:TRP:O	1:B:111:VAL:HG23	2.08	0.53
1:C:47:LYS:CD	1:C:234:TRP:HH2	2.21	0.53
1:A:115:CYS:O	1:A:120:ASN:HA	2.08	0.53
1:C:215:PRO:O	1:C:216:LEU:HD23	2.08	0.53
1:D:157:ALA:O	1:D:187:LEU:HD23	2.08	0.53
1:C:15:PHE:CE1	1:C:206:ILE:HD11	2.44	0.53
1:C:234:TRP:HD1	1:C:234:TRP:C	2.12	0.53
1:B:231:THR:HG22	1:B:260:LEU:CD2	2.38	0.53

Continued on next page...

Continued from previous page...

Atom-1	Atom-2	Distance(Å)	Clash(Å)
1:A:18:ARG:H	1:A:18:ARG:HD2	1.71	0.52
1:D:193:LEU:CD1	1:D:195:ILE:HD11	2.39	0.52
1:D:193:LEU:HD22	1:D:230:TYR:CE1	2.44	0.52
1:C:216:LEU:HD22	1:C:220:ALA:HB1	1.91	0.52
1:A:203:TYR:CD1	1:A:203:TYR:C	2.82	0.52
1:A:22:GLU:O	1:A:26:LYS:HD3	2.09	0.52
1:D:202:SER:HA	1:D:213:SER:O	2.08	0.52
1:C:179:ALA:HA	1:C:182:ASN:HB2	1.90	0.52
1:A:196:MET:HG2	1:A:254:SER:CB	2.25	0.52
1:D:206:ILE:O	1:D:206:ILE:CG2	2.55	0.52
1:B:148:PRO:O	1:B:149:LEU:HD23	2.09	0.52
1:D:6:THR:H	1:D:212:SER:CB	2.22	0.52
1:D:12:LEU:CD1	1:D:12:LEU:H	2.15	0.52
1:D:62:ILE:HG13	1:D:183:LEU:CD2	2.40	0.52
1:C:61:ASP:OD2	1:C:64:SER:CB	2.57	0.52
1:D:11:TYR:O	1:D:15:PHE:HB3	2.10	0.52
1:B:22:GLU:O	1:B:26:LYS:HG2	2.10	0.52
1:A:66:PRO:C	1:A:94:LEU:HD21	2.31	0.52
1:D:17:PRO:HG3	1:D:90:ASN:OD1	2.10	0.52
1:B:149:LEU:HD12	1:B:154:LEU:HD12	1.93	0.51
1:D:127:LYS:HG3	1:D:127:LYS:O	2.10	0.51
1:B:203:TYR:CD1	1:B:203:TYR:C	2.84	0.51
1:A:63:GLY:HA3	1:A:165:CYS:SG	2.49	0.51
1:B:203:TYR:CE2	1:B:248:ASN:HB3	2.46	0.51
1:C:170:CYS:CB	1:C:176:TYR:HB2	2.40	0.51
1:A:8:LYS:NZ	1:A:142:ASP:OD2	2.41	0.51
1:A:16:ASN:OD1	1:A:18:ARG:HD3	2.10	0.51
1:B:218:ARG:HG3	1:B:218:ARG:NH1	2.25	0.51
1:D:195:ILE:HD13	1:D:195:ILE:N	2.25	0.51
1:A:8:LYS:HB3	1:A:86:TYR:CE2	2.46	0.51
1:C:145:GLN:OE1	1:C:145:GLN:HA	2.10	0.51
1:C:242:TYR:O	1:C:243:SER:O	2.28	0.51
1:C:69:TYR:HB3	1:C:107:TRP:CZ3	2.45	0.51
1:C:119:GLY:O	1:C:121:ARG:N	2.44	0.51
1:C:246:MET:O	1:C:247:ALA:HB2	2.12	0.51
1:A:41:LEU:O	1:A:45:LEU:HG	2.11	0.50
1:B:33:ALA:O	1:B:37:ILE:HG13	2.11	0.50
1:C:234:TRP:HB3	1:C:256:VAL:HB	1.94	0.50
1:B:41:LEU:O	1:B:45:LEU:HG	2.10	0.50
1:A:39:LYS:O	1:A:43:LYS:HG3	2.12	0.50
1:A:13:SER:HG	1:A:14:HIS:HD1	1.53	0.50
1:A:172:ASP:OD1	1:A:174:PRO:HD2	2.11	0.50

Continued on next page...

Continued from previous page...

Atom-1	Atom-2	Distance(Å)	Clash(Å)
1:C:9:ASP:HA	1:C:12:LEU:HD12	1.93	0.50
1:B:205:MET:SD	1:B:210:LYS:CE	2.86	0.50
1:D:194:VAL:C	1:D:195:ILE:HD13	2.32	0.50
1:C:57:ASP:HA	1:C:79:LYS:HG2	1.93	0.50
1:D:187:LEU:O	1:D:259:LYS:NZ	2.44	0.50
1:D:68:ILE:HD11	1:D:107:TRP:CG	2.47	0.50
1:A:62:ILE:HG13	1:A:183:LEU:HD22	1.94	0.50
1:D:149:LEU:O	1:D:152:VAL:CG2	2.59	0.49
1:A:222:GLU:O	1:A:226:LYS:HG3	2.12	0.49
1:C:168:ALA:HB2	3:C:302:NCA:N7	2.27	0.49
1:C:206:ILE:O	1:C:208:GLU:N	2.45	0.49
1:B:255:LEU:HD23	1:B:255:LEU:C	2.33	0.49
1:A:58:LEU:HD21	1:A:60:ILE:HD11	1.95	0.49
1:A:241:SER:HA	1:A:249:ASN:HD21	1.77	0.49
1:D:68:ILE:HD11	1:D:107:TRP:CD2	2.47	0.49
1:D:129:GLU:HA	1:D:129:GLU:OE1	2.11	0.49
1:A:48:ILE:HG12	1:A:234:TRP:HZ2	1.77	0.49
1:D:37:ILE:HD12	1:D:242:TYR:CE1	2.46	0.49
1:A:95:GLU:OE2	1:A:138:VAL:HG21	2.12	0.49
1:D:95:GLU:HA	1:D:98:LEU:HB2	1.94	0.49
1:A:114:VAL:O	1:A:118:GLU:HG3	2.13	0.49
1:C:238:ILE:HG12	1:C:238:ILE:O	2.13	0.49
1:C:23:LYS:HD3	1:C:207:GLY:H	1.78	0.49
1:D:99:LYS:O	1:D:100:ALA:C	2.50	0.49
1:C:113:TYR:O	1:C:116:ASP:HB2	2.13	0.48
1:D:203:TYR:HA	1:D:211:PHE:O	2.13	0.48
1:C:151:ALA:O	1:C:152:VAL:C	2.51	0.48
1:B:71:LEU:HB3	1:B:131:LEU:HD11	1.95	0.48
1:B:231:THR:HG22	1:B:260:LEU:HD23	1.93	0.48
1:B:173:LEU:HA	1:B:173:LEU:HD12	1.63	0.48
1:C:21:LEU:CD2	1:C:67:THR:HG22	2.43	0.48
1:C:219:GLU:N	1:C:219:GLU:CD	2.61	0.48
1:A:173:LEU:O	1:A:176:TYR:HB3	2.14	0.48
1:D:234:TRP:C	1:D:234:TRP:HD1	2.14	0.48
1:A:5:PHE:O	1:A:6:THR:C	2.51	0.48
1:A:116:ASP:O	1:A:117:LEU:C	2.52	0.48
1:C:127:LYS:O	1:C:127:LYS:HG3	2.14	0.48
1:C:237:VAL:O	1:C:238:ILE:CG2	2.62	0.48
1:B:253:PHE:CD1	1:B:253:PHE:C	2.86	0.48
1:A:224:ALA:O	1:A:228:ALA:HB2	2.14	0.48
1:D:171:PRO:O	1:D:172:ASP:HB3	2.14	0.48
1:A:76:GLU:CG	1:A:127:LYS:HZ1	2.27	0.48

Continued on next page...

Continued from previous page...

Atom-1	Atom-2	Distance(Å)	Clash(Å)
1:C:85:ASP:N	1:C:141:CYS:HB2	2.29	0.48
1:C:242:TYR:C	1:C:243:SER:O	2.53	0.47
1:C:27:PHE:HZ	1:C:113:TYR:CD1	2.32	0.47
1:C:173:LEU:O	1:C:177:CYS:HB2	2.14	0.47
1:D:248:ASN:C	1:D:248:ASN:OD1	2.52	0.47
1:B:31:HIS:ND1	1:B:36:GLN:NE2	2.62	0.47
1:D:238:ILE:N	1:D:238:ILE:HD13	2.23	0.47
1:B:40:HIS:NE2	1:B:238:ILE:HG21	2.29	0.47
1:A:178:ARG:HH21	1:A:178:ARG:HG3	1.79	0.47
1:A:160:VAL:HG23	1:A:187:LEU:HG	1.95	0.47
1:D:255:LEU:C	1:D:255:LEU:HD12	2.34	0.47
1:C:234:TRP:O	1:C:255:LEU:HA	2.15	0.47
1:A:176:TYR:O	1:A:179:ALA:HB3	2.14	0.47
1:A:35:SER:O	1:A:39:LYS:HG3	2.14	0.47
1:B:196:MET:HG2	1:B:254:SER:CB	2.45	0.47
1:C:239:SER:O	1:C:240:GLN:C	2.54	0.47
1:D:40:HIS:CE1	1:D:238:ILE:HG21	2.50	0.47
1:B:72:LEU:HD23	1:B:131:LEU:HD22	1.97	0.47
1:A:100:ALA:HB2	1:A:132:ARG:CZ	2.45	0.47
1:C:243:SER:C	1:C:245:THR:N	2.68	0.46
1:B:173:LEU:N	1:B:174:PRO:CD	2.79	0.46
1:A:20:TYR:OH	3:A:302:NCA:H6	2.15	0.46
1:D:234:TRP:HD1	1:D:235:PHE:N	2.12	0.46
1:A:193:LEU:HD21	1:A:195:ILE:HD11	1.96	0.46
1:C:95:GLU:HA	1:C:98:LEU:HD23	1.96	0.46
1:D:142:ASP:HA	2:D:301:SAH:N1	2.30	0.46
1:C:11:TYR:OH	1:C:168:ALA:HB1	2.15	0.46
1:D:128:GLU:HB3	1:D:132:ARG:NH1	2.30	0.46
1:B:34:GLU:OE2	1:B:246:MET:HG3	2.15	0.46
1:B:208:GLU:O	1:B:208:GLU:CG	2.63	0.46
1:C:171:PRO:O	1:C:172:ASP:HB3	2.16	0.46
1:C:119:GLY:O	1:C:120:ASN:C	2.54	0.46
1:D:47:LYS:CG	1:D:234:TRP:CH2	2.95	0.46
1:B:218:ARG:HG2	1:B:235:PHE:HE2	1.78	0.46
1:D:71:LEU:HD13	1:D:81:ILE:HG21	1.96	0.46
1:A:184:GLY:O	1:A:259:LYS:NZ	2.41	0.46
1:D:230:TYR:N	1:D:230:TYR:CD2	2.84	0.46
1:D:164:LEU:HB3	3:D:302:NCA:C2	2.45	0.46
1:B:85:ASP:OD2	2:B:301:SAH:O2'	2.32	0.46
1:A:203:TYR:HD1	1:A:204:TYR:N	2.14	0.45
1:A:189:PRO:CB	1:A:261:SER:HA	2.46	0.45
1:C:13:SER:CB	1:C:14:HIS:CE1	2.99	0.45

Continued on next page...

Continued from previous page...

Atom-1	Atom-2	Distance(Å)	Clash(Å)
1:C:75:CYS:SG	1:C:75:CYS:O	2.74	0.45
1:A:60:ILE:HD12	1:A:60:ILE:N	2.31	0.45
1:C:231:THR:OG1	1:C:260:LEU:HD21	2.16	0.45
1:C:83:VAL:HG21	1:C:94:LEU:HD13	1.98	0.45
1:B:65:GLY:HA3	2:B:301:SAH:HB1	1.98	0.45
1:D:57:ASP:CG	1:D:79:LYS:NZ	2.70	0.45
1:C:139:LEU:HD11	1:C:152:VAL:HG11	1.98	0.45
1:B:134:ALA:O	1:B:136:LYS:HE2	2.17	0.45
1:D:258:ARG:HG3	1:D:259:LYS:H	1.82	0.45
1:C:238:ILE:HD11	1:C:252:LEU:HB2	1.98	0.45
1:D:202:SER:HB3	1:D:248:ASN:HD21	1.82	0.45
1:B:178:ARG:O	1:B:182:ASN:N	2.47	0.45
1:A:84:THR:HB	1:A:141:CYS:HB3	1.99	0.45
1:A:45:LEU:CD2	1:A:196:MET:HE1	2.46	0.45
1:D:225:VAL:HG11	1:D:257:ALA:HB2	1.97	0.45
1:D:241:SER:HA	1:D:249:ASN:HD21	1.82	0.45
1:D:249:ASN:ND2	1:D:251:GLY:H	2.14	0.45
1:D:46:PHE:CE2	1:D:51:LEU:CD2	2.99	0.45
1:C:74:ALA:C	1:C:76:GLU:H	2.19	0.45
1:C:47:LYS:HG2	1:D:47:LYS:HD3	1.96	0.44
1:A:121:ARG:CZ	1:A:121:ARG:HB3	2.47	0.44
1:D:218:ARG:HE	1:D:218:ARG:HB3	1.37	0.44
1:B:205:MET:HE1	1:B:208:GLU:OE1	2.16	0.44
1:B:142:ASP:O	1:B:148:PRO:HB3	2.17	0.44
1:B:6:THR:HG21	1:B:211:PHE:HD1	1.82	0.44
1:A:189:PRO:HB2	1:A:261:SER:HA	1.99	0.44
1:D:199:LEU:HD22	1:D:217:GLY:HA2	2.00	0.44
1:C:87:SER:OG	1:C:89:GLN:HG2	2.17	0.44
1:D:56:GLY:O	1:D:78:PHE:HA	2.18	0.44
1:B:258:ARG:HG2	1:B:258:ARG:NH1	2.32	0.44
1:C:47:LYS:O	1:C:47:LYS:HD3	2.18	0.44
1:D:37:ILE:HD13	1:D:252:LEU:HD11	1.99	0.44
1:B:71:LEU:CD1	1:B:83:VAL:HG11	2.48	0.44
1:D:173:LEU:N	1:D:174:PRO:CD	2.81	0.44
1:A:30:ARG:O	1:A:32:SER:N	2.50	0.44
1:D:258:ARG:CG	1:D:259:LYS:H	2.31	0.44
1:D:57:ASP:CG	1:D:79:LYS:HZ3	2.20	0.44
1:B:108:SER:N	1:B:109:PRO:HD2	2.32	0.44
1:A:62:ILE:HG13	1:A:183:LEU:CD2	2.47	0.44
1:A:30:ARG:HD3	1:A:30:ARG:HA	1.79	0.44
1:B:170:CYS:SG	1:B:176:TYR:HA	2.58	0.44
1:D:177:CYS:O	1:D:181:ARG:NH1	2.50	0.44

Continued on next page...

Continued from previous page...

Atom-1	Atom-2	Distance(Å)	Clash(Å)
1:C:222:GLU:O	1:C:226:LYS:HG3	2.18	0.44
1:B:214:LEU:HG	1:B:216:LEU:HG	2.00	0.43
1:C:121:ARG:HH11	1:C:121:ARG:HA	1.83	0.43
1:D:252:LEU:N	1:D:252:LEU:HD12	2.33	0.43
1:D:83:VAL:O	1:D:138:VAL:HA	2.18	0.43
1:D:258:ARG:HH11	1:D:258:ARG:CG	2.29	0.43
1:C:207:GLY:O	1:C:208:GLU:OE1	2.35	0.43
1:C:136:LYS:HA	1:C:136:LYS:HD3	1.57	0.43
1:D:253:PHE:CD1	1:D:253:PHE:C	2.90	0.43
1:D:35:SER:O	1:D:39:LYS:HB2	2.17	0.43
1:D:184:GLY:O	1:D:259:LYS:HE3	2.18	0.43
1:C:110:VAL:O	1:C:114:VAL:HG23	2.19	0.43
1:D:83:VAL:HG23	1:D:138:VAL:HG13	1.99	0.43
1:A:60:ILE:CD1	1:A:157:ALA:HB2	2.48	0.43
1:D:29:SER:O	1:D:30:ARG:C	2.56	0.43
1:D:46:PHE:CE2	1:D:51:LEU:HD22	2.54	0.43
1:D:255:LEU:HD12	1:D:257:ALA:N	2.34	0.43
1:B:45:LEU:HD13	1:B:70:GLN:HA	2.01	0.43
1:D:256:VAL:HG12	1:D:256:VAL:O	2.18	0.43
1:D:241:SER:OG	1:D:249:ASN:O	2.21	0.43
1:B:192:PHE:CE1	1:B:258:ARG:HD2	2.53	0.43
1:A:163:THR:HG22	1:A:196:MET:HE3	2.01	0.42
1:D:136:LYS:HD3	1:D:136:LYS:HA	1.71	0.42
1:A:243:SER:O	1:A:246:MET:HB2	2.19	0.42
1:C:144:THR:O	1:C:182:ASN:ND2	2.52	0.42
1:B:23:LYS:HZ2	1:B:23:LYS:HG2	1.76	0.42
1:B:224:ALA:HA	1:B:227:GLU:HG3	2.01	0.42
1:D:62:ILE:HG13	1:D:183:LEU:HD21	2.01	0.42
1:B:72:LEU:HA	1:B:72:LEU:HD23	1.87	0.42
1:A:60:ILE:HD13	1:A:157:ALA:CB	2.49	0.42
1:C:13:SER:HB3	1:C:14:HIS:CE1	2.54	0.42
1:D:58:LEU:HD11	1:D:82:VAL:HG23	2.02	0.42
1:C:251:GLY:O	1:C:252:LEU:HD12	2.19	0.42
1:A:255:LEU:HD12	1:A:255:LEU:C	2.40	0.42
1:C:202:SER:C	1:C:213:SER:HB3	2.40	0.42
1:D:230:TYR:HB2	1:D:257:ALA:HB1	2.02	0.42
1:A:108:SER:HA	1:A:111:VAL:HB	2.01	0.42
1:A:240:GLN:NE2	1:A:241:SER:O	2.50	0.42
1:D:83:VAL:O	1:D:83:VAL:HG23	2.19	0.42
1:C:30:ARG:O	1:C:31:HIS:HB2	2.18	0.42
1:B:31:HIS:CE1	1:B:36:GLN:HE21	2.37	0.42
1:A:178:ARG:O	1:A:182:ASN:ND2	2.53	0.42

Continued on next page...

Continued from previous page...

Atom-1	Atom-2	Distance(Å)	Clash(Å)
1:C:23:LYS:NZ	1:C:246:MET:CG	2.82	0.42
1:C:108:SER:HB2	1:C:109:PRO:CD	2.50	0.42
1:C:217:GLY:O	1:C:218:ARG:C	2.58	0.41
1:C:237:VAL:C	1:C:238:ILE:HG23	2.40	0.41
1:A:66:PRO:C	1:A:94:LEU:CD2	2.88	0.41
1:D:11:TYR:CE2	1:D:211:PHE:CD1	3.08	0.41
1:B:243:SER:O	1:B:246:MET:HB2	2.20	0.41
1:B:145:GLN:O	1:B:148:PRO:HG3	2.20	0.41
1:B:45:LEU:CD2	1:B:196:MET:CE	2.95	0.41
1:D:98:LEU:HA	1:D:98:LEU:HD12	1.92	0.41
1:B:141:CYS:HA	1:B:148:PRO:O	2.20	0.41
1:B:63:GLY:O	2:B:301:SAH:N	2.53	0.41
1:C:13:SER:C	1:C:14:HIS:ND1	2.73	0.41
1:C:13:SER:CB	1:C:14:HIS:ND1	2.84	0.41
1:A:92:GLN:O	1:A:96:LYS:HG3	2.20	0.41
1:C:41:LEU:O	1:C:44:ASN:HB2	2.20	0.41
1:C:5:PHE:HB3	1:C:171:PRO:HB3	2.03	0.41
1:A:34:GLU:OE2	1:A:246:MET:HG3	2.20	0.41
1:C:8:LYS:HB3	1:C:86:TYR:CZ	2.56	0.41
1:C:6:THR:N	1:C:212:SER:OG	2.53	0.41
1:D:37:ILE:HD12	1:D:242:TYR:CD1	2.56	0.41
1:A:235:PHE:CD1	1:A:255:LEU:HD23	2.56	0.41
1:A:172:ASP:HA	1:A:214:LEU:HD13	2.01	0.41
1:C:241:SER:HA	1:C:249:ASN:HD21	1.85	0.41
1:B:29:SER:CB	1:C:104:ALA:O	2.69	0.41
1:A:69:TYR:CD1	1:A:70:GLN:N	2.88	0.41
1:A:147:GLN:HA	1:A:148:PRO:HD2	1.78	0.41
1:C:146:SER:HB2	1:C:147:GLN:NE2	2.35	0.41
1:C:238:ILE:N	1:C:238:ILE:HD13	2.36	0.41
1:C:31:HIS:CE1	1:C:39:LYS:HZ2	2.39	0.41
1:C:184:GLY:HA2	1:C:230:TYR:OH	2.21	0.41
1:C:13:SER:HB2	1:C:14:HIS:CE1	2.56	0.41
1:A:141:CYS:HB2	1:A:149:LEU:HD23	2.03	0.41
1:A:57:ASP:N	1:A:158:ASP:OD2	2.52	0.41
1:C:16:ASN:HB3	1:C:19:ASP:HB2	2.03	0.41
1:A:87:SER:OG	1:A:89:GLN:OE1	2.37	0.41
1:D:36:GLN:OE1	1:D:39:LYS:NZ	2.44	0.40
1:A:136:LYS:HA	1:A:136:LYS:HD3	1.82	0.40
1:C:207:GLY:O	1:C:208:GLU:CG	2.69	0.40
1:B:17:PRO:HD2	1:B:18:ARG:HD2	2.03	0.40
1:B:142:ASP:HA	2:B:301:SAH:N1	2.36	0.40
1:B:19:ASP:O	1:B:22:GLU:HB3	2.21	0.40

Continued on next page...

Continued from previous page...

Atom-1	Atom-2	Distance(Å)	Clash(Å)
1:D:222:GLU:O	1:D:223:ALA:C	2.58	0.40
1:C:181:ARG:HB3	1:C:228:ALA:HB1	2.02	0.40
1:B:8:LYS:O	1:B:11:TYR:N	2.45	0.40
1:A:203:TYR:CD1	1:A:204:TYR:N	2.88	0.40
1:A:86:TYR:O	1:A:86:TYR:CG	2.74	0.40
1:A:34:GLU:CD	1:A:34:GLU:H	2.25	0.40
1:A:152:VAL:HG13	1:A:153:PRO:HD2	2.03	0.40
1:D:62:ILE:HG13	1:D:183:LEU:HD22	2.03	0.40
1:D:218:ARG:O	1:D:222:GLU:HG3	2.21	0.40
1:C:229:GLY:O	1:C:260:LEU:HG	2.21	0.40
1:B:48:ILE:O	1:B:54:VAL:HG23	2.21	0.40
1:C:143:VAL:HG12	1:C:183:LEU:HD21	2.04	0.40

There are no symmetry-related clashes.

5.3 Torsion angles

5.3.1 Protein backbone ⓘ

In the following table, the Percentiles column shows the percent Ramachandran outliers of the chain as a percentile score with respect to all X-ray entries followed by that with respect to entries of similar resolution. The Analysed column shows the number of residues for which the backbone conformation was analysed, and the total number of residues.

Mol	Chain	Analysed	Favoured	Allowed	Outliers	Percentiles	
1	A	257/283 (91%)	226 (88%)	28 (11%)	3 (1%)	19	44
1	B	257/283 (91%)	232 (90%)	21 (8%)	4 (2%)	14	34
1	C	257/283 (91%)	209 (81%)	37 (14%)	11 (4%)	4	7
1	D	255/283 (90%)	215 (84%)	32 (12%)	8 (3%)	7	14
All	All	1026/1132 (91%)	882 (86%)	118 (12%)	26 (2%)	9	20

All (26) Ramachandran outliers are listed below:

Mol	Chain	Res	Type
1	A	31	HIS
1	B	31	HIS
1	C	120	ASN
1	C	218	ARG
1	A	6	THR
1	A	74	ALA

Continued on next page...

Continued from previous page...

Mol	Chain	Res	Type
1	C	9	ASP
1	C	31	HIS
1	C	52	ASP
1	C	240	GLN
1	D	52	ASP
1	D	249	ASN
1	C	6	THR
1	D	224	ALA
1	B	6	THR
1	B	212	SER
1	C	172	ASP
1	C	151	ALA
1	D	68	ILE
1	D	124	GLY
1	D	218	ARG
1	D	240	GLN
1	B	215	PRO
1	C	28	GLY
1	D	54	VAL
1	C	135	VAL

5.3.2 Protein sidechains ⓘ

In the following table, the Percentiles column shows the percent sidechain outliers of the chain as a percentile score with respect to all X-ray entries followed by that with respect to entries of similar resolution. The Analysed column shows the number of residues for which the sidechain conformation was analysed, and the total number of residues.

Mol	Chain	Analysed	Rotameric	Outliers	Percentiles	
1	A	224/245 (91%)	204 (91%)	20 (9%)	14	31
1	B	224/245 (91%)	206 (92%)	18 (8%)	17	37
1	C	224/245 (91%)	204 (91%)	20 (9%)	14	31
1	D	223/245 (91%)	201 (90%)	22 (10%)	11	25
All	All	895/980 (91%)	815 (91%)	80 (9%)	14	31

All (80) residues with a non-rotameric sidechain are listed below:

Mol	Chain	Res	Type
1	A	3	SER
1	A	18	ARG

Continued on next page...

Continued from previous page...

Mol	Chain	Res	Type
1	A	19	ASP
1	A	22	GLU
1	A	51	LEU
1	A	59	LEU
1	A	79	LYS
1	A	88	ASP
1	A	121	ARG
1	A	125	PRO
1	A	126	GLU
1	A	127	LYS
1	A	133	GLN
1	A	140	LYS
1	A	141	CYS
1	A	162	SER
1	A	167	ASP
1	A	173	LEU
1	A	231	THR
1	A	258	ARG
1	B	18	ARG
1	B	26	LYS
1	B	30	ARG
1	B	51	LEU
1	B	54	VAL
1	B	80	GLU
1	B	87	SER
1	B	141	CYS
1	B	172	ASP
1	B	209	GLN
1	B	218	ARG
1	B	219	GLU
1	B	227	GLU
1	B	231	THR
1	B	238	ILE
1	B	246	MET
1	B	255	LEU
1	B	258	ARG
1	C	18	ARG
1	C	26	LYS
1	C	31	HIS
1	C	37	ILE
1	C	55	LYS
1	C	77	SER

Continued on next page...

Continued from previous page...

Mol	Chain	Res	Type
1	C	94	LEU
1	C	159	CYS
1	C	167	ASP
1	C	178	ARG
1	C	188	LYS
1	C	197	ASP
1	C	212	SER
1	C	218	ARG
1	C	219	GLU
1	C	227	GLU
1	C	234	TRP
1	C	238	ILE
1	C	245	THR
1	C	255	LEU
1	D	12	LEU
1	D	18	ARG
1	D	19	ASP
1	D	22	GLU
1	D	23	LYS
1	D	30	ARG
1	D	51	LEU
1	D	87	SER
1	D	98	LEU
1	D	117	LEU
1	D	152	VAL
1	D	218	ARG
1	D	219	GLU
1	D	230	TYR
1	D	231	THR
1	D	232	ILE
1	D	234	TRP
1	D	238	ILE
1	D	245	THR
1	D	246	MET
1	D	255	LEU
1	D	258	ARG

Some sidechains can be flipped to improve hydrogen bonding and reduce clashes. All (9) such sidechains are listed below:

Mol	Chain	Res	Type
1	A	120	ASN
1	A	209	GLN

Continued on next page...

Continued from previous page...

Mol	Chain	Res	Type
1	B	36	GLN
1	B	90	ASN
1	C	31	HIS
1	C	147	GLN
1	D	120	ASN
1	D	133	GLN
1	D	147	GLN

5.3.3 RNA ⓘ

There are no RNA chains in this entry.

5.4 Non-standard residues in protein, DNA, RNA chains ⓘ

There are no non-standard protein/DNA/RNA residues in this entry.

5.5 Carbohydrates ⓘ

There are no carbohydrates in this entry.

5.6 Ligand geometry ⓘ

8 ligands are modelled in this entry.

In the following table, the Counts columns list the number of bonds (or angles) for which Mogul statistics could be retrieved, the number of bonds (or angles) that are observed in the model and the number of bonds (or angles) that are defined in the chemical component dictionary. The Link column lists molecule types, if any, to which the group is linked. The Z score for a bond length (or angle) is the number of standard deviations the observed value is removed from the expected value. A bond length (or angle) with $|Z| > 2$ is considered an outlier worth inspection. RMSZ is the root-mean-square of all Z scores of the bond lengths (or angles).

Mol	Type	Chain	Res	Link	Bond lengths			Bond angles		
					Counts	RMSZ	# Z > 2	Counts	RMSZ	# Z > 2
2	SAH	A	301	-	28,28,28	1.26	5 (17%)	40,40,40	2.80	15 (37%)
3	NCA	A	302	-	9,9,9	0.85	1 (11%)	11,11,11	1.85	3 (27%)
2	SAH	B	301	-	28,28,28	0.98	1 (3%)	40,40,40	2.03	9 (22%)
3	NCA	B	302	-	9,9,9	0.53	0	11,11,11	1.88	4 (36%)
2	SAH	C	301	-	28,28,28	1.12	1 (3%)	40,40,40	2.52	12 (30%)

Mol	Type	Chain	Res	Link	Bond lengths			Bond angles		
					Counts	RMSZ	# Z > 2	Counts	RMSZ	# Z > 2
3	NCA	C	302	-	9,9,9	1.02	1 (11%)	11,11,11	1.82	3 (27%)
2	SAH	D	301	-	28,28,28	0.99	1 (3%)	40,40,40	3.24	9 (22%)
3	NCA	D	302	-	9,9,9	0.96	1 (11%)	11,11,11	1.83	3 (27%)

In the following table, the Chirals column lists the number of chiral outliers, the number of chiral centers analysed, the number of these observed in the model and the number defined in the chemical component dictionary. Similar counts are reported in the Torsion and Rings columns. '-' means no outliers of that kind were identified.

Mol	Type	Chain	Res	Link	Chirals	Torsions	Rings
2	SAH	A	301	-	-	0/15/31/31	0/1/3/3
3	NCA	A	302	-	-	0/4/4/4	0/1/1/1
2	SAH	B	301	-	-	0/15/31/31	0/1/3/3
3	NCA	B	302	-	-	0/4/4/4	0/1/1/1
2	SAH	C	301	-	-	0/15/31/31	0/1/3/3
3	NCA	C	302	-	-	0/4/4/4	0/1/1/1
2	SAH	D	301	-	-	0/15/31/31	0/1/3/3
3	NCA	D	302	-	-	0/4/4/4	0/1/1/1

All (11) bond length outliers are listed below:

Mol	Chain	Res	Type	Atoms	Z	Observed(Å)	Ideal(Å)
2	A	301	SAH	C2'-C1'	-3.16	1.49	1.53
2	B	301	SAH	C4-N9	-3.00	1.33	1.37
2	C	301	SAH	O4'-C1'	2.78	1.45	1.41
3	C	302	NCA	C3-C7	2.77	1.55	1.50
2	A	301	SAH	C4-N3	-2.47	1.31	1.35
3	D	302	NCA	C3-C7	2.39	1.54	1.50
2	A	301	SAH	C4-N9	-2.31	1.34	1.37
2	A	301	SAH	O4'-C1'	2.30	1.44	1.41
3	A	302	NCA	C3-C7	2.30	1.54	1.50
2	D	301	SAH	C4-N9	-2.21	1.34	1.37
2	A	301	SAH	OXT-C	-2.10	1.22	1.30

All (58) bond angle outliers are listed below:

Mol	Chain	Res	Type	Atoms	Z	Observed(°)	Ideal(°)
2	D	301	SAH	O4'-C1'-N9	-14.03	95.39	108.44
2	A	301	SAH	N3-C2-N1	-10.31	120.09	128.71
2	B	301	SAH	N3-C2-N1	-8.27	121.79	128.71
2	D	301	SAH	N3-C2-N1	-8.23	121.83	128.71

Continued on next page...

Continued from previous page...

Mol	Chain	Res	Type	Atoms	Z	Observed(°)	Ideal(°)
2	C	301	SAH	N3-C2-N1	-7.72	122.26	128.71
2	C	301	SAH	O4'-C1'-N9	-6.93	101.99	108.44
2	C	301	SAH	N3-C4-N9	6.05	136.36	125.43
2	D	301	SAH	C4'-O4'-C1'	-5.78	103.47	109.75
2	A	301	SAH	O4'-C1'-C2'	-5.49	98.36	106.77
2	D	301	SAH	N3-C4-N9	5.42	135.22	125.43
2	A	301	SAH	C4'-O4'-C1'	-4.99	104.33	109.75
2	A	301	SAH	O4'-C1'-N9	-4.77	104.00	108.44
2	B	301	SAH	C4'-O4'-C1'	-4.69	104.66	109.75
2	A	301	SAH	N3-C4-N9	4.58	133.69	125.43
2	D	301	SAH	O4'-C1'-C2'	-4.43	99.98	106.77
2	C	301	SAH	C5-C4-N3	-4.38	116.16	125.70
2	B	301	SAH	N3-C4-N9	4.36	133.31	125.43
3	D	302	NCA	O7-C7-C3	3.95	124.03	119.58
2	D	301	SAH	C5-C4-N3	-3.93	117.14	125.70
2	C	301	SAH	O4'-C1'-C2'	-3.84	100.88	106.77
2	A	301	SAH	OXT-C-O	-3.73	115.63	124.07
2	D	301	SAH	C4-C5-N7	-3.69	106.36	109.52
3	C	302	NCA	O7-C7-N7	-3.51	117.52	122.59
3	A	302	NCA	C6-N1-C2	3.32	122.81	116.85
2	A	301	SAH	C5-C4-N3	-3.32	118.48	125.70
3	B	302	NCA	C3-C7-N7	3.29	121.52	117.77
3	A	302	NCA	O7-C7-N7	-3.27	117.86	122.59
3	B	302	NCA	C6-N1-C2	3.25	122.69	116.85
2	A	301	SAH	C2-N3-C4	3.24	123.23	114.01
2	C	301	SAH	C4'-O4'-C1'	-3.24	106.23	109.75
3	B	302	NCA	O7-C7-N7	-3.20	117.97	122.59
3	C	302	NCA	C6-N1-C2	3.02	122.27	116.85
2	A	301	SAH	C4-C5-N7	-2.94	107.00	109.52
2	B	301	SAH	C5-C4-N3	-2.89	119.41	125.70
3	D	302	NCA	C6-N1-C2	2.87	122.01	116.85
3	A	302	NCA	O7-C7-C3	2.84	122.78	119.58
2	D	301	SAH	C2-N3-C4	2.84	122.09	114.01
2	C	301	SAH	C2-N3-C4	2.76	121.88	114.01
2	C	301	SAH	OXT-C-O	-2.67	118.02	124.07
2	A	301	SAH	CG-CB-CA	-2.61	108.85	113.22
2	C	301	SAH	C4-C5-N7	-2.61	107.29	109.52
2	C	301	SAH	C1'-N9-C4	2.59	131.11	126.64
3	C	302	NCA	C3-C7-N7	2.54	120.67	117.77
2	A	301	SAH	C8-N9-C4	2.54	108.84	106.90
2	D	301	SAH	C-CA-N	-2.49	105.24	109.36
2	A	301	SAH	O4'-C4'-C5'	-2.45	102.37	108.91

Continued on next page...

Continued from previous page...

Mol	Chain	Res	Type	Atoms	Z	Observed(°)	Ideal(°)
2	A	301	SAH	N7-C8-N9	-2.35	107.70	114.36
2	B	301	SAH	C4-C5-N7	-2.32	107.54	109.52
3	D	302	NCA	O7-C7-N7	-2.31	119.26	122.59
2	B	301	SAH	O4'-C1'-C2'	-2.27	103.30	106.77
2	B	301	SAH	C5'-C4'-C3'	-2.25	109.16	114.98
2	B	301	SAH	C2-N3-C4	2.24	120.40	114.01
2	A	301	SAH	C5'-C4'-C3'	2.24	120.78	114.98
2	C	301	SAH	C8-N9-C1'	-2.14	122.16	126.38
2	B	301	SAH	OXT-C-CA	2.14	121.68	116.88
2	C	301	SAH	O-C-CA	2.13	124.51	118.36
3	B	302	NCA	C3-C2-N1	-2.07	120.49	123.51
2	A	301	SAH	O4'-C4'-C3'	-2.05	101.02	105.17

There are no chirality outliers.

There are no torsion outliers.

There are no ring outliers.

5.7 Other polymers ⓘ

There are no such residues in this entry.

5.8 Polymer linkage issues

There are no chain breaks in this entry.

6 Fit of model and data

6.1 Protein, DNA and RNA chains

In the following table, the column labelled ‘#RSRZ> 2’ contains the number (and percentage) of RSRZ outliers, followed by percent RSRZ outliers for the chain as percentile scores relative to all X-ray entries and entries of similar resolution. The OWAB column contains the minimum, median, 95th percentile and maximum values of the occupancy-weighted average B-factor per residue. The column labelled ‘Q< 0.9’ lists the number of (and percentage) of residues with an average occupancy less than 0.9.

Mol	Chain	Analysed	<RSRZ>	#RSRZ>2	OWAB(Å ²)	Q<0.9
1	A	259/283 (91%)	-0.48	3 (1%) 75 81	14, 30, 46, 63	1 (0%)
1	B	259/283 (91%)	-0.45	5 (1%) 64 70	11, 31, 49, 65	1 (0%)
1	C	259/283 (91%)	-0.17	6 (2%) 57 64	17, 42, 69, 80	1 (0%)
1	D	257/283 (90%)	-0.22	5 (1%) 64 70	13, 44, 70, 81	1 (0%)
All	All	1034/1132 (91%)	-0.33	19 (1%) 65 72	11, 34, 62, 81	4 (0%)

All (19) RSRZ outliers are listed below:

Mol	Chain	Res	Type	RSRZ
1	D	5	PHE	4.7
1	C	28	GLY	4.4
1	A	234	TRP	4.1
1	A	4	GLY	4.0
1	D	234	TRP	3.9
1	C	234	TRP	3.2
1	C	3	SER	3.2
1	B	234	TRP	3.1
1	B	3	SER	2.9
1	A	3	SER	2.9
1	B	4	GLY	2.6
1	C	27	PHE	2.5
1	D	207	GLY	2.2
1	D	14	HIS	2.2
1	D	29	SER	2.1
1	B	30	ARG	2.1
1	B	31	HIS	2.1
1	C	203	TYR	2.0
1	C	29	SER	2.0

6.2 Non-standard residues in protein, DNA, RNA chains ⓘ

There are no non-standard protein/DNA/RNA residues in this entry.

6.3 Carbohydrates ⓘ

There are no carbohydrates in this entry.

6.4 Ligands ⓘ

In the following table, the Atoms column lists the number of modelled atoms in the group and the number defined in the chemical component dictionary. LLDF column lists the quality of electron density of the group with respect to its neighbouring residues in protein, DNA or RNA chains. The B-factors column lists the minimum, median, 95th percentile and maximum values of B factors of atoms in the group. The column labelled 'Q< 0.9' lists the number of atoms with occupancy less than 0.9.

Mol	Type	Chain	Res	Atoms	RSR	LLDF	B-factors(Å ²)	Q<0.9
3	NCA	A	302	9/9	0.27	8.61	29,30,33,33	0
3	NCA	D	302	9/9	0.38	7.77	66,66,68,68	0
3	NCA	B	302	9/9	0.28	4.59	35,37,42,43	0
3	NCA	C	302	9/9	0.40	3.84	56,57,57,58	0
2	SAH	C	301	26/26	0.15	0.30	37,42,43,45	0
2	SAH	B	301	26/26	0.13	0.03	19,20,25,25	0
2	SAH	A	301	26/26	0.12	-0.20	24,26,27,29	0
2	SAH	D	301	26/26	0.12	-0.46	36,38,39,39	0

6.5 Other polymers ⓘ

There are no such residues in this entry.