



wwPDB X-ray Structure Validation Summary Report

Feb 28, 2014 – 05:06 AM GMT

PDB ID : 1RS6
Title : Rat neuronal NOS heme domain with D-lysine-D-nitroarginineamide bound
Authors : Flinspach, M.; Li, H.; Jamal, J.; Yang, W.; Huang, H.; Silverman, R.B.; Poulos, T.L.
Deposited on : 2003-12-09
Resolution : 1.95 Å(reported)

This is a wwPDB validation summary report for a publicly released PDB entry.

We welcome your comments at validation@mail.wwpdb.org

A user guide is available at <http://wwpdb.org/ValidationPDFNotes.html>

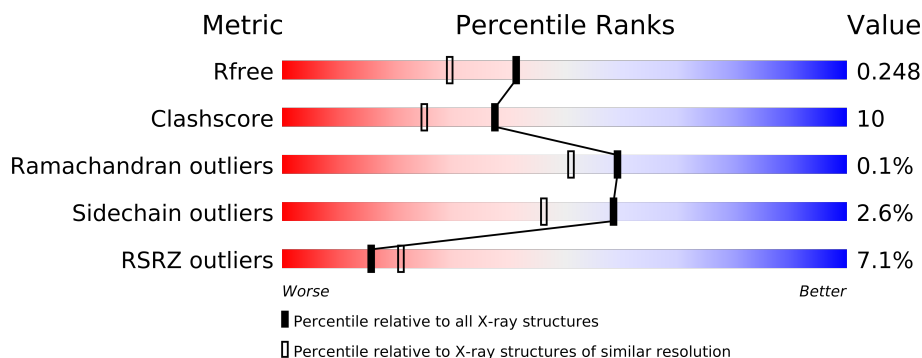
The following versions of software and data (see [references](#)) were used in the production of this report:

MolProbity	:	4.02b-467
Mogul	:	1.15 2013
Xtriage (Phenix)	:	dev-1323
EDS	:	stable22639
Percentile statistics	:	21963
Refmac	:	5.8.0049
CCP4	:	6.3.0 (Settle)
Ideal geometry (proteins)	:	Engh & Huber (2001)
Ideal geometry (DNA, RNA)	:	Parkinson et. al. (1996)
Validation Pipeline (wwPDB-VP)	:	stable22683

1 Overall quality at a glance

The reported resolution of this entry is 1.95 Å.

Percentile scores (ranging between 0-100) for global validation metrics of the entry are shown in the following graphic. The table shows the number of entries on which the scores are based.



Metric	Whole archive (#Entries)	Similar resolution (#Entries, resolution range(Å))
R_{free}	66092	1321 (1.96-1.96)
Clashscore	79885	1488 (1.96-1.96)
Ramachandran outliers	78287	1475 (1.96-1.96)
Sidechain outliers	78261	1475 (1.96-1.96)
RSRZ outliers	66119	1321 (1.96-1.96)

The table below summarises the geometric issues observed across the polymeric chains and their fit to the electron density. The red, orange, yellow and green segments on the lower bar indicate the fraction of residues that contain outliers for ≥ 3 , 2, 1 and 0 types of geometric quality criteria. The upper red bar (where present) indicates the fraction of residues that have poor fit to the electron density.

Mol	Chain	Length	Quality of chain
1	A	421	
1	B	421	

The following table lists non-polymeric compounds that are outliers for geometric or electron-density-fit criteria:

Mol	Type	Chain	Res	Geometry	Electron density
2	MTL	A	870	-	X
2	MTL	B	871	-	X
3	ACT	A	860	-	X

2 Entry composition i

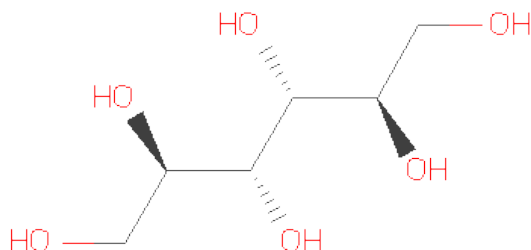
There are 8 unique types of molecules in this entry. The entry contains 7401 atoms, of which 0 are hydrogen and 0 are deuterium.

In the tables below, the ZeroOcc column contains the number of atoms modelled with zero occupancy, the AltConf column contains the number of residues with at least one atom in alternate conformation and the Trace column contains the number of residues modelled with at most 2 atoms.

- Molecule 1 is a protein called Nitric-oxide synthase, brain.

Mol	Chain	Residues	Atoms					ZeroOcc	AltConf	Trace
1	A	407	Total	C	N	O	S	0	2	0
			3315	2121	566	606	22			
1	B	410	Total	C	N	O	S	0	2	0
			3343	2138	573	611	21			

- Molecule 2 is D-MANNITOL (three-letter code: MTL) (formula: C₆H₁₄O₆).



Mol	Chain	Residues	Atoms			ZeroOcc	AltConf
2	A	1	Total	C	O	0	0
			12	6	6		
2	B	1	Total	C	O	0	0
			12	6	6		

- Molecule 3 is ACETATE ION (three-letter code: ACT) (formula: C₂H₃O₂).



Mol	Chain	Residues	Atoms			ZeroOcc	AltConf
3	A	1	Total	C	O	0	0
			4	2	2		
3	B	1	Total	C	O	0	0
			4	2	2		

- Molecule 4 is ZINC ION (three-letter code: ZN) (formula: Zn).

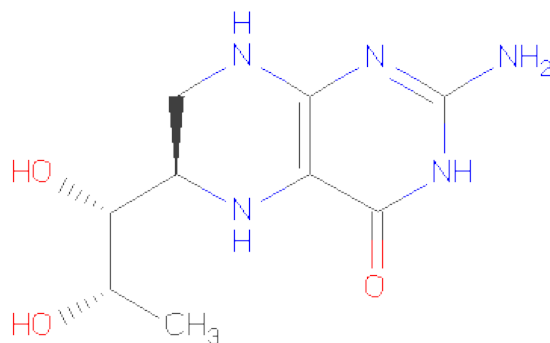
Mol	Chain	Residues	Atoms		ZeroOcc	AltConf
4	A	1	Total	Zn	0	0
			1	1		

- Molecule 5 is PROTOPORPHYRIN IX CONTAINING FE (three-letter code: HEM) (formula: C₃₄H₃₂FeN₄O₄).



Mol	Chain	Residues	Atoms					ZeroOcc	AltConf
5	A	1	Total	C	Fe	N	O	0	0
			43	34	1	4	4		
5	B	1	Total	C	Fe	N	O	0	0
			43	34	1	4	4		

- Molecule 6 is 5,6,7,8-TETRAHYDROBIOPTERIN (three-letter code: H4B) (formula: $C_9H_{15}N_5O_3$).



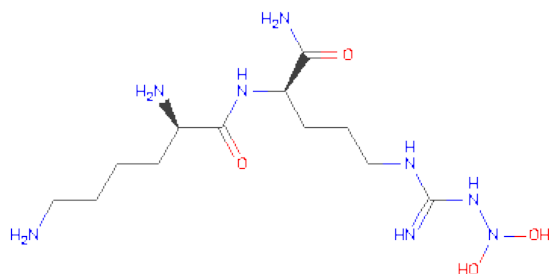
Mol	Chain	Residues	Atoms				ZeroOcc	AltConf
6	A	1	Total	C	N	O	0	0
			17	9	5	3		

Continued on next page...

Continued from previous page...

Mol	Chain	Residues	Atoms				ZeroOcc	AltConf
6	B	1	Total	C	N	O	0	0
			17	9	5	3		

- Molecule 7 is L-LYSYL-N 5 -[(Z)-(2,2-DIHYDROXYHYDRAZINO)(IMINO)METHYL]-L-ORNITHINAMIDE (three-letter code: DP2) (formula: C₁₂H₂₈N₈O₄).



Mol	Chain	Residues	Atoms				ZeroOcc	AltConf
7	A	1	Total	C	N	O	0	0
			24	12	8	4		
7	B	1	Total	C	N	O	0	0
			24	12	8	4		

- Molecule 8 is water.

Mol	Chain	Residues	Atoms		ZeroOcc	AltConf
8	A	230	Total	O	0	0
			230	230		
8	B	312	Total	O	0	0
			312	312		

4 Data and refinement statistics

Property	Value	Source
Space group	P 21 21 21	Depositor
Cell constants a, b, c, α , β , γ	51.59Å 109.81Å 164.67Å 90.00° 90.00° 90.00°	Depositor
Resolution (Å)	27.08 – 1.95 27.08 – 1.90	Depositor EDS
% Data completeness (in resolution range)	92.4 (27.08-1.95) 91.8 (27.08-1.90)	Depositor EDS
R_{merge}	0.06	Depositor
R_{sym}	0.06	Depositor
$\langle I/\sigma(I) \rangle$ ¹	1.47 (at 1.89Å)	Xtriage
Refinement program	CNS 1.1	Depositor
R, R_{free}	0.221 , 0.254 0.218 , 0.248	Depositor DCC
R_{free} test set	3434 reflections (5.25%)	DCC
Wilson B-factor (Å ²)	27.9	Xtriage
Anisotropy	0.736	Xtriage
Bulk solvent k_{sol} (e/Å ³), B_{sol} (Å ²)	0.36 , 44.4	EDS
Estimated twinning fraction	No twinning to report.	Xtriage
L-test for twinning	$\langle L \rangle = 0.50$, $\langle L^2 \rangle = 0.33$	Xtriage
Outliers	1 of 68862 reflections (0.001%)	Xtriage
F_o, F_c correlation	0.95	EDS
Total number of atoms	7401	wwPDB-VP
Average B, all atoms (Å ²)	38.0	wwPDB-VP

Xtriage's analysis on translational NCS is as follows: *The largest off-origin peak in the Patterson function is 5.04% of the height of the origin peak. No significant pseudotranslation is detected.*

¹Intensities estimated from amplitudes.

5 Model quality i

5.1 Standard geometry i

Bond lengths and bond angles in the following residue types are not validated in this section: ZN, DP2, MTL, ACT, HEM, H4B

The Z score for a bond length (or angle) is the number of standard deviations the observed value is removed from the expected value. A bond length (or angle) with $|Z| > 5$ is considered an outlier worth inspection. RMSZ is the root-mean-square of all Z scores of the bond lengths (or angles).

Mol	Chain	Bond lengths		Bond angles	
		RMSZ	$\# Z > 5$	RMSZ	$\# Z > 5$
1	A	0.45	0/3418	0.67	1/4637 (0.0%)
1	B	0.47	0/3446	0.68	2/4672 (0.0%)
All	All	0.46	0/6864	0.67	3/9309 (0.0%)

There are no bond length outliers.

All (3) bond angle outliers are listed below:

Mol	Chain	Res	Type	Atoms	Z	Observed(°)	Ideal(°)
1	B	589	MET	N-CA-C	-5.91	95.04	111.00
1	B	326	CYS	CA-CB-SG	5.88	124.59	114.00
1	A	589	MET	N-CA-C	-5.46	96.26	111.00

There are no chirality outliers.

There are no planarity outliers.

5.2 Close contacts i

In the following table, the Non-H and H(model) columns list the number of non-hydrogen atoms and hydrogen atoms in the chain respectively. The H(added) column lists the number of hydrogens added by MolProbity. The Clashes column lists the number of clashes within the asymmetric unit, and the number in parentheses is this value normalized per 1000 atoms of the molecule in the chain. The Symm-Clashes column gives symmetry related clashes, in the same way as for the Clashes column.

Mol	Chain	Non-H	H(model)	H(added)	Clashes	Symm-Clashes
1	A	3315	0	3223	89	0
1	B	3343	0	3258	51	0
2	A	12	0	14	1	0
2	B	12	0	14	0	0

Continued on next page...

Continued from previous page...

Mol	Chain	Non-H	H(model)	H(added)	Clashes	Symm-Clashes
3	A	4	0	3	0	0
3	B	4	0	3	0	0
4	A	1	0	0	0	0
5	A	43	0	30	2	0
5	B	43	0	30	3	0
6	A	17	0	15	0	0
6	B	17	0	15	1	0
7	A	24	0	28	1	0
7	B	24	0	27	0	0
8	A	230	0	0	7	0
8	B	312	0	0	8	0
All	All	7401	0	6660	135	0

Clashscore is defined as the number of clashes calculated for the entry per 1000 atoms (including hydrogens) of the entry. The overall clashscore for this entry is 10.

The worst 5 of 135 close contacts within the same asymmetric unit are listed below.

Atom-1	Atom-2	Distance(Å)	Clash(Å)
1:B:523:LEU:HD22	1:B:531:PRO:HB2	1.43	1.00
1:A:523:LEU:HD22	1:A:531:PRO:HB2	1.55	0.89
1:B:350:THR:HB	1:B:353:GLN:OE1	1.79	0.82
1:B:350:THR:HG22	1:B:352:ASP:H	1.47	0.78
1:A:350:THR:HB	1:A:353:GLN:HG3	1.64	0.78

There are no symmetry-related clashes.

5.3 Torsion angles

5.3.1 Protein backbone ⓘ

In the following table, the Percentiles column shows the percent Ramachandran outliers of the chain as a percentile score with respect to all X-ray entries followed by that with respect to entries of similar resolution. The Analysed column shows the number of residues for which the backbone conformation was analysed, and the total number of residues.

Mol	Chain	Analysed	Favoured	Allowed	Outliers	Percentiles	
1	A	405/421 (96%)	384 (95%)	20 (5%)	1 (0%)	56	46
1	B	408/421 (97%)	394 (97%)	14 (3%)	0	100	100
All	All	813/842 (97%)	778 (96%)	34 (4%)	1 (0%)	59	51

All (1) Ramachandran outliers are listed below:

Mol	Chain	Res	Type
1	A	489	ASP

5.3.2 Protein sidechains ⓘ

In the following table, the Percentiles column shows the percent sidechain outliers of the chain as a percentile score with respect to all X-ray entries followed by that with respect to entries of similar resolution. The Analysed column shows the number of residues for which the sidechain conformation was analysed, and the total number of residues.

Mol	Chain	Analysed	Rotameric	Outliers	Percentiles	
1	A	365/377 (97%)	354 (97%)	11 (3%)	53	39
1	B	368/377 (98%)	360 (98%)	8 (2%)	64	55
All	All	733/754 (97%)	714 (97%)	19 (3%)	59	46

5 of 19 residues with a non-rotameric sidechain are listed below:

Mol	Chain	Res	Type
1	A	616	LEU
1	A	635	ILE
1	B	454	ASN
1	A	555	LYS
1	B	523	LEU

Some sidechains can be flipped to improve hydrogen bonding and reduce clashes. 5 of 14 such sidechains are listed below:

Mol	Chain	Res	Type
1	B	425	GLN
1	B	440	ASN
1	B	535	GLN
1	B	364	GLN
1	B	527	ASN

5.3.3 RNA ⓘ

There are no RNA chains in this entry.

5.4 Non-standard residues in protein, DNA, RNA chains ⓘ

There are no non-standard protein/DNA/RNA residues in this entry.

5.5 Carbohydrates ⓘ

There are no carbohydrates in this entry.

5.6 Ligand geometry ⓘ

Of 11 ligands modelled in this entry, 1 is monoatomic - leaving 10 for Mogul analysis.

In the following table, the Counts columns list the number of bonds (or angles) for which Mogul statistics could be retrieved, the number of bonds (or angles) that are observed in the model and the number of bonds (or angles) that are defined in the chemical component dictionary. The Link column lists molecule types, if any, to which the group is linked. The Z score for a bond length (or angle) is the number of standard deviations the observed value is removed from the expected value. A bond length (or angle) with $|Z| > 2$ is considered an outlier worth inspection. RMSZ is the root-mean-square of all Z scores of the bond lengths (or angles).

Mol	Type	Chain	Res	Link	Bond lengths			Bond angles		
					Counts	RMSZ	# Z > 2	Counts	RMSZ	# Z > 2
5	HEM	A	750	1	49,50,50	2.18	14 (28%)	46,82,82	1.60	6 (13%)
6	H4B	A	760	-	18,18,18	1.94	4 (22%)	24,26,26	2.49	9 (37%)
7	DP2	A	792	-	20,23,23	0.93	0	24,28,28	1.20	2 (8%)
3	ACT	A	860	-	1,3,3	2.93	1 (100%)	0,3,3	0.00	-
2	MTL	A	870	-	11,11,11	1.02	0	14,14,14	0.62	0
5	HEM	B	750	1	49,50,50	2.13	14 (28%)	46,82,82	1.80	9 (19%)
6	H4B	B	761	-	18,18,18	1.78	4 (22%)	24,26,26	2.45	7 (29%)
7	DP2	B	793	-	20,23,23	1.08	3 (15%)	24,28,28	1.44	3 (12%)
3	ACT	B	861	-	1,3,3	2.53	1 (100%)	0,3,3	0.00	-
2	MTL	B	871	-	11,11,11	1.02	0	14,14,14	0.58	0

In the following table, the Chirals column lists the number of chiral outliers, the number of chiral centers analysed, the number of these observed in the model and the number defined in the chemical component dictionary. Similar counts are reported in the Torsion and Rings columns. '-' means no outliers of that kind were identified.

Mol	Type	Chain	Res	Link	Chirals	Torsions	Rings
5	HEM	A	750	1	-	0/14/114/114	0/0/8/8
6	H4B	A	760	-	-	0/8/17/17	0/0/2/2
7	DP2	A	792	-	-	0/24/28/28	0/0/0/0

Continued on next page...

Continued from previous page...

Mol	Type	Chain	Res	Link	Chirals	Torsions	Rings
3	ACT	A	860	-	-	0/0/0/0	0/0/0/0
2	MTL	A	870	-	-	0/16/16/16	0/0/0/0
5	HEM	B	750	1	-	0/14/114/114	0/0/8/8
6	H4B	B	761	-	-	0/8/17/17	0/0/2/2
7	DP2	B	793	-	-	0/24/28/28	0/0/0/0
3	ACT	B	861	-	-	0/0/0/0	0/0/0/0
2	MTL	B	871	-	-	0/16/16/16	0/0/0/0

The worst 5 of 41 bond length outliers are listed below:

Mol	Chain	Res	Type	Atoms	Z	Observed(Å)	Ideal(Å)
5	A	750	HEM	C2D-C1D	8.59	1.46	1.44
5	B	750	HEM	CHB-C1B	6.14	1.44	1.35
5	A	750	HEM	C4A-C3A	5.76	1.47	1.40
5	B	750	HEM	C3C-C2C	-4.52	1.35	1.43
5	B	750	HEM	C2B-C1B	-4.49	1.43	1.44

The worst 5 of 36 bond angle outliers are listed below:

Mol	Chain	Res	Type	Atoms	Z	Observed(°)	Ideal(°)
6	B	761	H4B	C4-C4A-C8A	8.76	122.68	114.56
6	A	760	H4B	C4-C4A-C8A	8.22	122.18	114.56
5	B	750	HEM	C3B-C4B-NB	-5.12	110.34	114.00
5	A	750	HEM	C3B-C4B-NB	-4.83	110.54	114.00
5	B	750	HEM	C4A-CHB-C1B	-4.47	121.59	127.47

There are no chirality outliers.

There are no torsion outliers.

There are no ring outliers.

5.7 Other polymers ⓘ

There are no such residues in this entry.

5.8 Polymer linkage issues

There are no chain breaks in this entry.

6 Fit of model and data ⓘ

6.1 Protein, DNA and RNA chains ⓘ

In the following table, the column labelled ‘#RSRZ> 2’ contains the number (and percentage) of RSRZ outliers, followed by percent RSRZ outliers for the chain as percentile scores relative to all X-ray entries and entries of similar resolution. The OWAB column contains the minimum, median, 95th percentile and maximum values of the occupancy-weighted average B-factor per residue. The column labelled ‘Q< 0.9’ lists the number of (and percentage) of residues with an average occupancy less than 0.9.

Mol	Chain	Analysed	<RSRZ>	#RSRZ>2	OWAB(Å ²)	Q<0.9
1	A	407/421 (96%)	0.64	38 (9%) 9 11	23, 38, 62, 77	0
1	B	410/421 (97%)	0.29	21 (5%) 27 33	22, 33, 54, 70	0
All	All	817/842 (97%)	0.46	59 (7%) 16 20	22, 36, 59, 77	0

The worst 5 of 59 RSRZ outliers are listed below:

Mol	Chain	Res	Type	RSRZ
1	A	300	PHE	5.1
1	B	348	VAL	5.1
1	B	619	ARG	4.8
1	A	299	ARG	4.6
1	A	486	LYS	4.5

6.2 Non-standard residues in protein, DNA, RNA chains ⓘ

There are no non-standard protein/DNA/RNA residues in this entry.

6.3 Carbohydrates ⓘ

There are no carbohydrates in this entry.

6.4 Ligands ⓘ

In the following table, the Atoms column lists the number of modelled atoms in the group and the number defined in the chemical component dictionary. LLDF column lists the quality of electron density of the group with respect to its neighbouring residues in protein, DNA or RNA chains. The B-factors column lists the minimum, median, 95th percentile and maximum values of B factors of atoms in the group. The column labelled ‘Q< 0.9’ lists the number of atoms with occupancy less than 0.9.

Mol	Type	Chain	Res	Atoms	RSR	LLDF	B-factors(\AA^2)	Q<0.9
2	MTL	A	870	12/12	0.26	5.16	46,50,52,52	0
3	ACT	A	860	4/4	0.19	4.15	57,58,58,58	0
2	MTL	B	871	12/12	0.20	4.06	45,49,50,50	0
7	DP2	A	792	24/24	0.17	1.48	33,39,42,43	0
7	DP2	B	793	24/24	0.15	0.17	29,39,42,43	0
5	HEM	B	750	43/43	0.10	-0.37	22,23,26,28	0
3	ACT	B	861	4/4	0.08	-0.41	38,38,39,39	0
5	HEM	A	750	43/43	0.10	-0.80	23,26,27,28	0
6	H4B	B	761	17/17	0.09	-0.84	24,25,27,28	0
6	H4B	A	760	17/17	0.09	-1.25	23,25,27,28	0
4	ZN	A	900	1/1	0.05	-2.38	33,33,33,33	0

6.5 Other polymers ⓘ

There are no such residues in this entry.