



# Full wwPDB X-ray Structure Validation Report

Feb 27, 2014 – 06:01 AM GMT

PDB ID : 3RSC  
Title : Crystal Structure of CalG2, Calicheamicin Glycosyltransferase, TDP and calicheamicin T0 bound form  
Authors : Chang, A.; Helmich, K.E.; Singh, S.; Bingman, C.A.; Thorson, J.S.; Phillips Jr., G.N.; Center for Eukaryotic Structural Genomics (CESG); Enzyme Discovery for Natural Product Biosynthesis (NatPro)  
Deposited on : 2011-05-02  
Resolution : 2.19 Å(reported)

This is a full wwPDB validation report for a publicly released PDB entry.  
We welcome your comments at [validation@mail.wwpdb.org](mailto:validation@mail.wwpdb.org)  
A user guide is available at <http://wwpdb.org/ValidationPDFNotes.html>

---

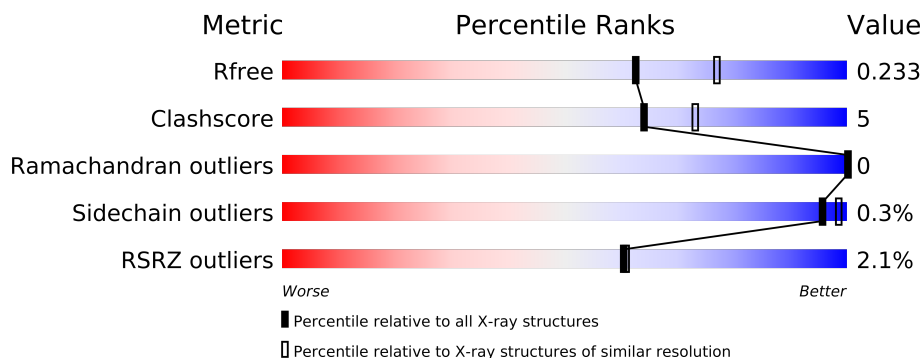
The following versions of software and data (see [references](#)) were used in the production of this report:

MolProbity : 4.02b-467  
Mogul : 1.15 2013  
Xtriage (Phenix) : dev-1323  
EDS : stable22639  
Percentile statistics : 21963  
Refmac : 5.8.0049  
CCP4 : 6.3.0 (Settle)  
Ideal geometry (proteins) : Engh & Huber (2001)  
Ideal geometry (DNA, RNA) : Parkinson et. al. (1996)  
Validation Pipeline (wwPDB-VP) : stable22683

# 1 Overall quality at a glance

The reported resolution of this entry is 2.19 Å.

Percentile scores (ranging between 0-100) for global validation metrics of the entry are shown in the following graphic. The table shows the number of entries on which the scores are based.



Metric	Whole archive (#Entries)	Similar resolution (#Entries, resolution range(Å))
$R_{free}$	66092	2938 (2.20-2.20)
Clashscore	79885	3751 (2.20-2.20)
Ramachandran outliers	78287	3681 (2.20-2.20)
Sidechain outliers	78261	3682 (2.20-2.20)
RSRZ outliers	66119	2939 (2.20-2.20)

The table below summarises the geometric issues observed across the polymeric chains and their fit to the electron density. The red, orange, yellow and green segments on the lower bar indicate the fraction of residues that contain outliers for  $\geq 3$ , 2, 1 and 0 types of geometric quality criteria. The upper red bar (where present) indicates the fraction of residues that have poor fit to the electron density.

Mol	Chain	Length	Quality of chain
1	A	415	
1	B	415	

The following table lists non-polymeric compounds that are outliers for geometric or electron-density-fit criteria:

Mol	Type	Chain	Res	Geometry	Electron density
4	PO4	A	399	-	X
4	PO4	A	401	-	X
4	PO4	B	400	-	X
4	PO4	B	401	-	X
4	PO4	B	402	-	X
4	PO4	B	403	-	X

## 2 Entry composition

There are 5 unique types of molecules in this entry. The entry contains 6578 atoms, of which 0 are hydrogen and 0 are deuterium.

In the tables below, the ZeroOcc column contains the number of atoms modelled with zero occupancy, the AltConf column contains the number of residues with at least one atom in alternate conformation and the Trace column contains the number of residues modelled with at most 2 atoms.

- Molecule 1 is a protein called CalG2.

Mol	Chain	Residues	Atoms						ZeroOcc	AltConf	Trace
1	A	397	Total	C	N	O	S	Se	0	0	0
			3037	1931	543	551	4	8			
1	B	397	Total	C	N	O	S	Se	0	0	0
			3037	1931	543	551	4	8			

There are 38 discrepancies between the modelled and reference sequences:

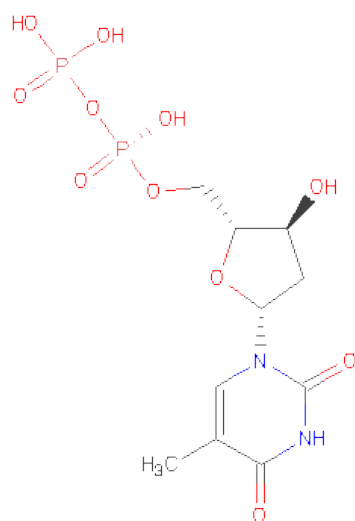
Chain	Residue	Modelled	Actual	Comment	Reference
A	-18	MSE	-	EXPRESSION TAG	UNP Q8KNE0
A	-17	GLY	-	EXPRESSION TAG	UNP Q8KNE0
A	-16	HIS	-	EXPRESSION TAG	UNP Q8KNE0
A	-15	HIS	-	EXPRESSION TAG	UNP Q8KNE0
A	-14	HIS	-	EXPRESSION TAG	UNP Q8KNE0
A	-13	HIS	-	EXPRESSION TAG	UNP Q8KNE0
A	-12	HIS	-	EXPRESSION TAG	UNP Q8KNE0
A	-11	HIS	-	EXPRESSION TAG	UNP Q8KNE0
A	-10	HIS	-	EXPRESSION TAG	UNP Q8KNE0
A	-9	HIS	-	EXPRESSION TAG	UNP Q8KNE0
A	-8	SER	-	EXPRESSION TAG	UNP Q8KNE0
A	-7	SER	-	EXPRESSION TAG	UNP Q8KNE0
A	-6	GLY	-	EXPRESSION TAG	UNP Q8KNE0
A	-5	HIS	-	EXPRESSION TAG	UNP Q8KNE0
A	-4	ILE	-	EXPRESSION TAG	UNP Q8KNE0
A	-3	GLU	-	EXPRESSION TAG	UNP Q8KNE0
A	-2	GLY	-	EXPRESSION TAG	UNP Q8KNE0
A	-1	ARG	-	EXPRESSION TAG	UNP Q8KNE0
A	0	HIS	-	EXPRESSION TAG	UNP Q8KNE0
B	-18	MSE	-	EXPRESSION TAG	UNP Q8KNE0
B	-17	GLY	-	EXPRESSION TAG	UNP Q8KNE0
B	-16	HIS	-	EXPRESSION TAG	UNP Q8KNE0
B	-15	HIS	-	EXPRESSION TAG	UNP Q8KNE0
B	-14	HIS	-	EXPRESSION TAG	UNP Q8KNE0
B	-13	HIS	-	EXPRESSION TAG	UNP Q8KNE0

*Continued on next page...*

Continued from previous page...

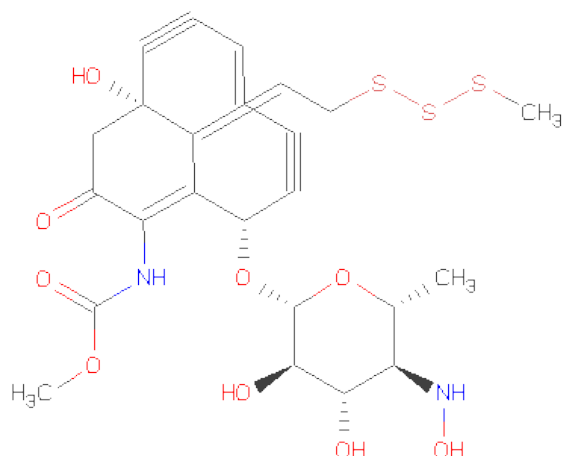
Chain	Residue	Modelled	Actual	Comment	Reference
B	-12	HIS	-	EXPRESSION TAG	UNP Q8KNE0
B	-11	HIS	-	EXPRESSION TAG	UNP Q8KNE0
B	-10	HIS	-	EXPRESSION TAG	UNP Q8KNE0
B	-9	HIS	-	EXPRESSION TAG	UNP Q8KNE0
B	-8	SER	-	EXPRESSION TAG	UNP Q8KNE0
B	-7	SER	-	EXPRESSION TAG	UNP Q8KNE0
B	-6	GLY	-	EXPRESSION TAG	UNP Q8KNE0
B	-5	HIS	-	EXPRESSION TAG	UNP Q8KNE0
B	-4	ILE	-	EXPRESSION TAG	UNP Q8KNE0
B	-3	GLU	-	EXPRESSION TAG	UNP Q8KNE0
B	-2	GLY	-	EXPRESSION TAG	UNP Q8KNE0
B	-1	ARG	-	EXPRESSION TAG	UNP Q8KNE0
B	0	HIS	-	EXPRESSION TAG	UNP Q8KNE0

- Molecule 2 is THYMIDINE-5'-DIPHOSPHATE (three-letter code: TYD) (formula:  $C_{10}H_{16}N_2O_{11}P_2$ ).



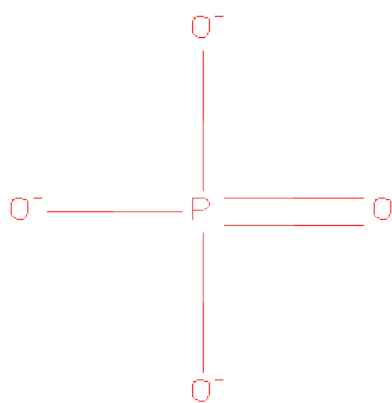
Mol	Chain	Residues	Atoms					ZeroOcc	AltConf
2	A	1	Total	C	N	O	P	0	0
			25	10	2	11	2		
2	B	1	Total	C	N	O	P	0	0
			25	10	2	11	2		

- Molecule 3 is CALICHEAMICIN T0 (three-letter code: C0T) (formula:  $C_{24}H_{28}N_2O_9S_3$ ).



Mol	Chain	Residues	Atoms					ZeroOcc	AltConf
3	A	1	Total	C	N	O	S	0	0
			38	24	2	9	3		
3	B	1	Total	C	N	O	S	0	0
			38	24	2	9	3		

- Molecule 4 is PHOSPHATE ION (three-letter code: PO4) (formula: O<sub>4</sub>P).



Mol	Chain	Residues	Atoms		ZeroOcc	AltConf
4	A	1	Total	O P	0	0
			5	4 1		
4	A	1	Total	O P	0	0
			5	4 1		

*Continued on next page...*

*Continued from previous page...*

Mol	Chain	Residues	Atoms			ZeroOcc	AltConf
4	A	1	Total	O	P	0	0
			5	4	1		
4	B	1	Total	O	P	0	0
			5	4	1		
4	B	1	Total	O	P	0	0
			5	4	1		
4	B	1	Total	O	P	0	0
			5	4	1		
4	B	1	Total	O	P	0	0
			5	4	1		
4	B	1	Total	O	P	0	0
			5	4	1		

- Molecule 5 is water.

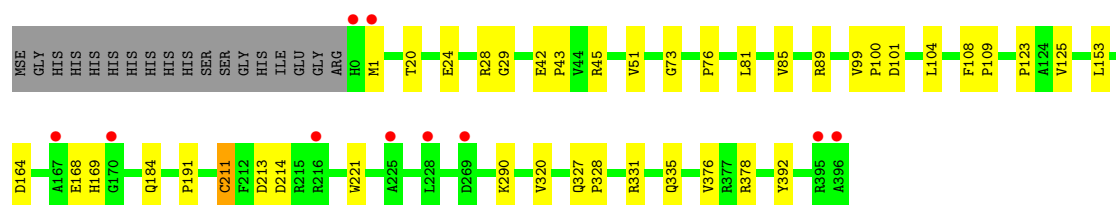
Mol	Chain	Residues	Atoms		ZeroOcc	AltConf
5	A	166	Total	O	0	0
			166	166		
5	B	172	Total	O	0	0
			172	172		

### 3 Residue-property plots

These plots are drawn for all protein, RNA and DNA chains in the entry. The first graphic for a chain summarises the proportions of errors displayed in the second graphic. The second graphic shows the sequence view annotated by issues in geometry and electron density. Residues are color-coded according to the number of geometric quality criteria for which they contain at least one outlier: green = 0, yellow = 1, orange = 2 and red = 3 or more. A red dot above a residue indicates a poor fit to the electron density ( $RSRZ > 2$ ). Stretches of 2 or more consecutive residues without any outlier are shown as a green connector. Residues present in the sample, but not in the model, are shown in grey.

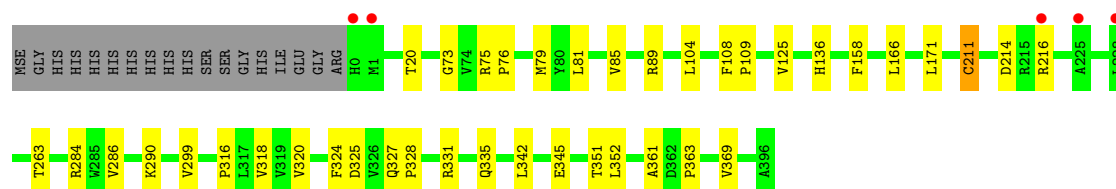
#### • Molecule 1: CalG2

Chain A: 



#### • Molecule 1: CalG2

Chain B: 



## 4 Data and refinement statistics

Property	Value	Source
Space group	P 1 21 1	Depositor
Cell constants a, b, c, $\alpha$ , $\beta$ , $\gamma$	88.29Å 48.59Å 108.39Å 90.00° 101.71° 90.00°	Depositor
Resolution (Å)	37.47 – 2.19 44.18 – 2.19	Depositor EDS
% Data completeness (in resolution range)	94.3 (37.47-2.19) 93.6 (44.18-2.19)	Depositor EDS
$R_{merge}$	0.11	Depositor
$R_{sym}$	(Not available)	Depositor
$\langle I/\sigma(I) \rangle$ <sup>1</sup>	2.65 (at 2.20Å)	Xtriage
Refinement program	PHENIX (phenix.refine: 1.6.4_486)	Depositor
R, $R_{free}$	0.197 , 0.239 0.192 , 0.233	Depositor DCC
$R_{free}$ test set	1883 reflections (4.29%)	DCC
Wilson B-factor (Å <sup>2</sup> )	27.1	Xtriage
Anisotropy	0.531	Xtriage
Bulk solvent $k_{sol}$ (e/Å <sup>3</sup> ), $B_{sol}$ (Å <sup>2</sup> )	0.37 , 33.9	EDS
Estimated twinning fraction	No twinning to report.	Xtriage
L-test for twinning	$\langle  L  \rangle = 0.49$ , $\langle L^2 \rangle = 0.32$	Xtriage
Outliers	2 of 46608 reflections (0.004%)	Xtriage
$F_o, F_c$ correlation	0.95	EDS
Total number of atoms	6578	wwPDB-VP
Average B, all atoms (Å <sup>2</sup> )	32.0	wwPDB-VP

Xtriage's analysis on translational NCS is as follows: *The largest off-origin peak in the Patterson function is 4.85% of the height of the origin peak. No significant pseudotranslation is detected.*

<sup>1</sup>Intensities estimated from amplitudes.



## 5 Model quality

### 5.1 Standard geometry

Bond lengths and bond angles in the following residue types are not validated in this section: TYD, PO4, C0T

The Z score for a bond length (or angle) is the number of standard deviations the observed value is removed from the expected value. A bond length (or angle) with  $|Z| > 5$  is considered an outlier worth inspection. RMSZ is the root-mean-square of all Z scores of the bond lengths (or angles).

Mol	Chain	Bond lengths		Bond angles	
		RMSZ	# Z  >5	RMSZ	# Z  >5
1	A	0.24	0/3103	0.42	0/4226
1	B	0.24	0/3103	0.42	0/4226
All	All	0.24	0/6206	0.42	0/8452

There are no bond length outliers.

There are no bond angle outliers.

There are no chirality outliers.

There are no planarity outliers.

### 5.2 Close contacts

In the following table, the Non-H and H(model) columns list the number of non-hydrogen atoms and hydrogen atoms in the chain respectively. The H(added) column lists the number of hydrogens added by MolProbity. The Clashes column lists the number of clashes within the asymmetric unit, and the number in parentheses is this value normalized per 1000 atoms of the molecule in the chain. The Symm-Clashes column gives symmetry related clashes, in the same way as for the Clashes column.

Mol	Chain	Non-H	H(model)	H(added)	Clashes	Symm-Clashes
1	A	3037	0	2996	27	0
1	B	3037	0	2996	30	0
2	A	25	0	13	0	0
2	B	25	0	13	0	0
3	A	38	0	28	5	0
3	B	38	0	28	8	0
4	A	15	0	0	0	0
4	B	25	0	0	1	0
5	A	166	0	0	2	0
5	B	172	0	0	2	0

*Continued on next page...*

*Continued from previous page...*

Mol	Chain	Non-H	H(model)	H(added)	Clashes	Symm-Clashes
All	All	6578	0	6074	67	0

Clashscore is defined as the number of clashes calculated for the entry per 1000 atoms (including hydrogens) of the entry. The overall clashscore for this entry is 5.

All (67) close contacts within the same asymmetric unit are listed below.

Atom-1	Atom-2	Distance(Å)	Clash(Å)
3:B:398:C0T:O5	3:B:398:C0T:H17	1.85	0.76
3:B:398:C0T:O5	3:B:398:C0T:C17	2.32	0.75
3:A:398:C0T:C17	3:A:398:C0T:O5	2.37	0.71
1:B:284:ARG:N	4:B:403:PO4:O2	2.23	0.70
1:A:42:GLU:HB3	1:A:43:PRO:HD3	1.75	0.68
1:A:211:CYS:HB3	5:A:560:HOH:O	1.94	0.66
3:A:398:C0T:H15	3:A:398:C0T:C7	2.27	0.64
3:B:398:C0T:H15	3:B:398:C0T:C7	2.28	0.63
1:B:104:LEU:HG	1:B:125:VAL:HB	1.84	0.60
1:B:211:CYS:HB3	5:B:561:HOH:O	2.02	0.60
1:B:108:PHE:HB3	1:B:109:PRO:HD3	1.84	0.60
1:B:81:LEU:HG	1:B:158:PHE:CE2	2.37	0.59
1:A:378:ARG:HD2	5:A:444:HOH:O	2.03	0.59
1:B:166:LEU:HG	1:B:171:LEU:HD23	1.86	0.58
1:A:213:ASP:CG	1:A:214:ASP:H	2.07	0.57
1:A:20:THR:OG1	1:A:211:CYS:HB2	2.05	0.57
3:A:398:C0T:H17A	3:A:398:C0T:O5	2.05	0.56
1:A:108:PHE:HB3	1:A:109:PRO:HD3	1.88	0.56
3:A:398:C0T:O5	3:A:398:C0T:H17	2.06	0.55
1:A:24:GLU:O	1:A:28:ARG:HG3	2.08	0.54
1:B:20:THR:OG1	1:B:211:CYS:HB2	2.07	0.54
1:A:331:ARG:O	1:A:335:GLN:HG3	2.10	0.51
1:B:299:VAL:HG22	1:B:318:VAL:HB	1.92	0.51
1:B:331:ARG:O	1:B:335:GLN:HG3	2.10	0.51
1:A:221:TRP:H	1:A:290:LYS:NZ	2.09	0.50
1:B:263:THR:HG22	1:B:286:VAL:HG22	1.92	0.49
1:A:153:LEU:HD12	1:B:136:HIS:CE1	2.48	0.49
1:A:85:VAL:O	1:A:89:ARG:HG2	2.12	0.49
1:B:216:ARG:HE	1:B:290:LYS:NZ	2.10	0.49
1:A:213:ASP:CG	1:A:214:ASP:N	2.68	0.47
1:B:320:VAL:HG11	1:B:352:LEU:HD11	1.96	0.47
1:A:168:GLU:HG3	1:A:169:HIS:ND1	2.30	0.46
1:A:1:MSE:CE	1:A:29:GLY:HA3	2.45	0.46
1:B:320:VAL:HG23	1:B:320:VAL:O	2.16	0.46
1:B:325:ASP:OD2	3:B:398:C0T:O6	2.27	0.45

*Continued on next page...*

*Continued from previous page...*

Atom-1	Atom-2	Distance(Å)	Clash(Å)
1:B:214:ASP:O	1:B:290:LYS:HE3	2.16	0.45
1:A:99:VAL:HA	1:A:100:PRO:HD3	1.76	0.44
1:B:214:ASP:HB3	1:B:216:ARG:HH21	1.83	0.44
1:A:73:GLY:O	1:A:76:PRO:HG2	2.17	0.44
1:B:73:GLY:O	1:B:76:PRO:HG2	2.18	0.44
1:B:327:GLN:HB2	1:B:328:PRO:HD3	2.00	0.43
1:B:85:VAL:O	1:B:89:ARG:HG2	2.18	0.43
1:B:108:PHE:HB3	1:B:109:PRO:CD	2.49	0.43
1:B:345:GLU:HG3	5:B:575:HOH:O	2.19	0.43
3:A:398:C0T:H15	3:A:398:C0T:O2	2.19	0.42
1:A:81:LEU:HD23	1:A:81:LEU:HA	1.75	0.42
1:B:316:PRO:HA	1:B:369:VAL:HG21	2.01	0.42
1:A:1:MSE:HE1	1:A:29:GLY:HA3	2.01	0.42
1:A:89:ARG:HH12	1:A:169:HIS:HE1	1.68	0.42
1:A:101:ASP:O	1:A:123:PRO:HD2	2.19	0.42
3:B:398:C0T:O5	3:B:398:C0T:H17A	2.16	0.42
1:B:79:MSE:SE	3:B:398:C0T:S3	3.28	0.42
1:A:191:PRO:HG3	1:A:376:VAL:HG22	2.01	0.42
3:B:398:C0T:O6	3:B:398:C0T:H24	2.21	0.41
1:B:324:PHE:HA	1:B:327:GLN:HG3	2.03	0.41
1:A:320:VAL:O	1:A:320:VAL:HG23	2.20	0.41
1:A:45:ARG:HG3	1:A:51:VAL:HG23	2.03	0.41
1:B:75:ARG:N	1:B:76:PRO:HD2	2.36	0.41
1:B:104:LEU:HD12	1:B:104:LEU:N	2.36	0.41
1:B:342:LEU:HD13	1:B:351:THR:HG22	2.03	0.41
1:A:327:GLN:N	1:A:328:PRO:CD	2.83	0.40
1:B:216:ARG:HE	1:B:290:LYS:HZ1	1.68	0.40
1:B:361:ALA:O	1:B:363:PRO:HD3	2.22	0.40
1:A:184:GLN:HB2	1:A:392:TYR:OH	2.22	0.40
1:A:104:LEU:HG	1:A:125:VAL:HB	2.02	0.40
3:B:398:C0T:H15	3:B:398:C0T:O2	2.21	0.40
1:A:164:ASP:O	1:A:168:GLU:HG2	2.21	0.40

There are no symmetry-related clashes.

## 5.3 Torsion angles

### 5.3.1 Protein backbone ⓘ

In the following table, the Percentiles column shows the percent Ramachandran outliers of the chain as a percentile score with respect to all X-ray entries followed by that with respect to entries

of similar resolution. The Analysed column shows the number of residues for which the backbone conformation was analysed, and the total number of residues.

Mol	Chain	Analysed	Favoured	Allowed	Outliers	Percentiles	
1	A	395/415 (95%)	384 (97%)	11 (3%)	0	100	100
1	B	395/415 (95%)	380 (96%)	15 (4%)	0	100	100
All	All	790/830 (95%)	764 (97%)	26 (3%)	0	100	100

There are no Ramachandran outliers to report.

### 5.3.2 Protein sidechains ⓘ

In the following table, the Percentiles column shows the percent sidechain outliers of the chain as a percentile score with respect to all X-ray entries followed by that with respect to entries of similar resolution. The Analysed column shows the number of residues for which the sidechain conformation was analysed, and the total number of residues.

Mol	Chain	Analysed	Rotameric	Outliers	Percentiles	
1	A	313/319 (98%)	312 (100%)	1 (0%)	96	98
1	B	313/319 (98%)	312 (100%)	1 (0%)	96	98
All	All	626/638 (98%)	624 (100%)	2 (0%)	96	98

All (2) residues with a non-rotameric sidechain are listed below:

Mol	Chain	Res	Type
1	A	211	CYS
1	B	211	CYS

Some sidechains can be flipped to improve hydrogen bonding and reduce clashes. There are no such sidechains identified.

### 5.3.3 RNA ⓘ

There are no RNA chains in this entry.

## 5.4 Non-standard residues in protein, DNA, RNA chains ⓘ

There are no non-standard protein/DNA/RNA residues in this entry.

## 5.5 Carbohydrates

There are no carbohydrates in this entry.

## 5.6 Ligand geometry

12 ligands are modelled in this entry.

In the following table, the Counts columns list the number of bonds (or angles) for which Mogul statistics could be retrieved, the number of bonds (or angles) that are observed in the model and the number of bonds (or angles) that are defined in the chemical component dictionary. The Link column lists molecule types, if any, to which the group is linked. The Z score for a bond length (or angle) is the number of standard deviations the observed value is removed from the expected value. A bond length (or angle) with  $|Z| > 2$  is considered an outlier worth inspection. RMSZ is the root-mean-square of all Z scores of the bond lengths (or angles).

Mol	Type	Chain	Res	Link	Bond lengths			Bond angles		
					Counts	RMSZ	# $ Z  > 2$	Counts	RMSZ	# $ Z  > 2$
2	TYD	A	397	-	26,26,26	1.15	3 (11%)	35,40,40	1.64	4 (11%)
3	C0T	A	398	-	40,40,40	1.78	8 (20%)	56,56,56	1.99	10 (17%)
4	PO4	A	399	-	4,4,4	0.18	0	6,6,6	0.31	0
4	PO4	A	400	-	4,4,4	0.24	0	6,6,6	0.30	0
4	PO4	A	401	-	4,4,4	0.20	0	6,6,6	0.31	0
2	TYD	B	397	-	26,26,26	1.13	3 (11%)	35,40,40	1.84	4 (11%)
3	C0T	B	398	-	40,40,40	1.80	8 (20%)	56,56,56	2.01	11 (19%)
4	PO4	B	399	-	4,4,4	0.27	0	6,6,6	0.32	0
4	PO4	B	400	-	4,4,4	0.11	0	6,6,6	0.31	0
4	PO4	B	401	-	4,4,4	0.17	0	6,6,6	0.32	0
4	PO4	B	402	-	4,4,4	0.11	0	6,6,6	0.31	0
4	PO4	B	403	-	4,4,4	0.20	0	6,6,6	0.31	0

In the following table, the Chirals column lists the number of chiral outliers, the number of chiral centers analysed, the number of these observed in the model and the number defined in the chemical component dictionary. Similar counts are reported in the Torsion and Rings columns. '-' means no outliers of that kind were identified.

Mol	Type	Chain	Res	Link	Chirals	Torsions	Rings
2	TYD	A	397	-	-	0/13/28/28	0/2/2/2
3	C0T	A	398	-	-	0/31/75/75	0/1/3/3
4	PO4	A	399	-	-	0/0/0/0	0/0/0/0
4	PO4	A	400	-	-	0/0/0/0	0/0/0/0
4	PO4	A	401	-	-	0/0/0/0	0/0/0/0
2	TYD	B	397	-	-	0/13/28/28	0/2/2/2
3	C0T	B	398	-	-	0/31/75/75	0/1/3/3

*Continued on next page...*

*Continued from previous page...*

Mol	Type	Chain	Res	Link	Chirals	Torsions	Rings
4	PO4	B	399	-	-	0/0/0/0	0/0/0/0
4	PO4	B	400	-	-	0/0/0/0	0/0/0/0
4	PO4	B	401	-	-	0/0/0/0	0/0/0/0
4	PO4	B	402	-	-	0/0/0/0	0/0/0/0
4	PO4	B	403	-	-	0/0/0/0	0/0/0/0

All (22) bond length outliers are listed below:

Mol	Chain	Res	Type	Atoms	Z	Observed(Å)	Ideal(Å)
3	A	398	C0T	O3-C7	7.83	1.45	1.34
3	B	398	C0T	O3-C7	7.75	1.45	1.34
2	A	397	TYD	C2-N1	3.57	1.42	1.38
2	B	397	TYD	C2-N1	3.36	1.42	1.38
3	B	398	C0T	C2-N1	-3.18	1.33	1.41
3	A	398	C0T	C2-N1	-3.11	1.33	1.41
3	B	398	C0T	C17-S1	-3.01	1.76	1.82
3	A	398	C0T	C17-S1	-2.99	1.76	1.82
3	B	398	C0T	C18-S3	-2.87	1.76	1.80
3	A	398	C0T	C18-S3	-2.86	1.76	1.80
2	B	397	TYD	C4-C5	2.71	1.48	1.42
2	A	397	TYD	C4-C5	2.65	1.48	1.42
3	B	398	C0T	S3-S2	-2.63	1.99	2.03
3	B	398	C0T	C7-N1	-2.52	1.33	1.37
3	A	398	C0T	C7-N1	-2.40	1.33	1.37
3	B	398	C0T	S1-S2	-2.40	2.00	2.03
3	A	398	C0T	O6-N2	-2.39	1.25	1.43
3	B	398	C0T	O6-N2	-2.39	1.25	1.43
2	B	397	TYD	C4-N3	-2.30	1.33	1.37
3	A	398	C0T	S1-S2	-2.27	2.00	2.03
3	A	398	C0T	S3-S2	-2.25	2.00	2.03
2	A	397	TYD	C4-N3	-2.04	1.33	1.37

All (29) bond angle outliers are listed below:

Mol	Chain	Res	Type	Atoms	Z	Observed(°)	Ideal(°)
3	B	398	C0T	O3-C7-N1	9.60	118.87	109.20
3	A	398	C0T	O3-C7-N1	9.27	118.54	109.20
2	B	397	TYD	N3-C2-N1	6.68	121.55	115.97
2	B	397	TYD	C6-N1-C2	-6.25	120.63	122.41
2	A	397	TYD	N3-C2-N1	6.03	121.00	115.97
2	A	397	TYD	C6-N1-C2	-5.17	120.94	122.41
3	B	398	C0T	O3-C7-O2	-5.04	118.17	124.64

*Continued on next page...*

*Continued from previous page...*

Mol	Chain	Res	Type	Atoms	Z	Observed(°)	Ideal(°)
3	A	398	C0T	O3-C7-O2	-5.01	118.21	124.64
3	B	398	C0T	C18-S3-S2	3.98	110.08	103.20
3	A	398	C0T	C18-S3-S2	3.87	109.89	103.20
3	A	398	C0T	C8-O3-C7	3.74	120.48	115.66
3	B	398	C0T	C8-O3-C7	3.47	120.13	115.66
3	A	398	C0T	C23-C22-N2	-2.92	105.01	111.78
3	B	398	C0T	C23-C22-N2	-2.83	105.21	111.78
3	A	398	C0T	C17-S1-S2	2.76	110.40	104.14
2	B	397	TYD	C5-C6-N1	-2.66	119.00	121.59
3	B	398	C0T	C21-C22-N2	-2.48	104.52	111.65
3	A	398	C0T	C21-C22-N2	-2.43	104.68	111.65
3	B	398	C0T	C17-C16-C4	-2.38	123.63	126.57
2	A	397	TYD	C5-C6-N1	-2.28	119.37	121.59
2	A	397	TYD	C4-N3-C2	-2.21	120.86	125.39
2	B	397	TYD	C4-N3-C2	-2.19	120.90	125.39
3	B	398	C0T	C17-S1-S2	2.18	109.09	104.14
3	B	398	C0T	O1-C1-C2	-2.18	119.43	122.64
3	A	398	C0T	C15-O5-C19	-2.17	110.43	114.49
3	A	398	C0T	O6-N2-C22	2.06	120.15	108.47
3	B	398	C0T	O6-N2-C22	2.06	120.14	108.47
3	B	398	C0T	C6-C1-C2	2.06	120.58	115.81
3	A	398	C0T	C16-C4-C3	2.05	128.68	123.44

There are no chirality outliers.

There are no torsion outliers.

There are no ring outliers.

## 5.7 Other polymers ⓘ

There are no such residues in this entry.

## 5.8 Polymer linkage issues

There are no chain breaks in this entry.

## 6 Fit of model and data ⓘ

### 6.1 Protein, DNA and RNA chains ⓘ

In the following table, the column labelled ‘#RSRZ > 2’ contains the number (and percentage) of RSRZ outliers, followed by percent RSRZ outliers for the chain as percentile scores relative to all X-ray entries and entries of similar resolution. The OWAB column contains the minimum, median, 95<sup>th</sup> percentile and maximum values of the occupancy-weighted average B-factor per residue. The column labelled ‘Q < 0.9’ lists the number of (and percentage) of residues with an average occupancy less than 0.9.

Mol	Chain	Analysed	<RSRZ>	#RSRZ>2	OWAB(Å <sup>2</sup> )	Q<0.9
1	A	397/415 (95%)	0.24	10 (2%) 54 55	20, 31, 49, 79	3 (0%)
1	B	397/415 (95%)	0.18	5 (1%) 74 74	19, 30, 45, 61	4 (1%)
All	All	794/830 (95%)	0.21	15 (1%) 60 64	19, 30, 46, 79	7 (0%)

All (15) RSRZ outliers are listed below:

Mol	Chain	Res	Type	RSRZ
1	A	0	HIS	5.6
1	A	396	ALA	5.3
1	A	225	ALA	5.1
1	B	216	ARG	3.7
1	B	225	ALA	2.9
1	B	1	MSE	2.8
1	A	1	MSE	2.8
1	A	216	ARG	2.6
1	A	170	GLY	2.6
1	B	228	LEU	2.3
1	A	269	ASP	2.2
1	A	228	LEU	2.1
1	A	167	ALA	2.1
1	A	395	ARG	2.1
1	B	0	HIS	2.1

### 6.2 Non-standard residues in protein, DNA, RNA chains ⓘ

There are no non-standard protein/DNA/RNA residues in this entry.

### 6.3 Carbohydrates ⓘ

There are no carbohydrates in this entry.



## 6.4 Ligands ⓘ

In the following table, the Atoms column lists the number of modelled atoms in the group and the number defined in the chemical component dictionary. LLDF column lists the quality of electron density of the group with respect to its neighbouring residues in protein, DNA or RNA chains. The B-factors column lists the minimum, median, 95<sup>th</sup> percentile and maximum values of B factors of atoms in the group. The column labelled 'Q< 0.9' lists the number of atoms with occupancy less than 0.9.

Mol	Type	Chain	Res	Atoms	RSR	LLDF	B-factors(Å <sup>2</sup> )	Q<0.9
4	PO4	B	403	5/5	0.50	14.77	45,50,62,67	0
4	PO4	A	399	5/5	0.26	12.10	36,37,50,50	0
4	PO4	B	400	5/5	0.34	11.91	37,40,50,50	0
4	PO4	B	402	5/5	0.43	10.27	47,47,65,71	0
4	PO4	B	401	5/5	0.32	8.28	45,51,56,63	0
4	PO4	A	401	5/5	0.27	7.48	49,56,61,63	0
3	C0T	B	398	38/38	0.16	1.53	21,32,37,42	1
3	C0T	A	398	38/38	0.14	0.42	21,32,39,45	1
4	PO4	B	399	5/5	0.15	-0.35	40,42,47,48	0
2	TYD	A	397	25/25	0.11	-0.45	20,24,30,31	0
2	TYD	B	397	25/25	0.11	-0.50	20,24,28,31	0
4	PO4	A	400	5/5	0.13	-0.89	45,46,50,51	0

## 6.5 Other polymers ⓘ

There are no such residues in this entry.