



Full wwPDB X-ray Structure Validation Report i

Feb 27, 2014 – 04:13 PM GMT

PDB ID : 3RV8
Title : Structure of a M. tuberculosis Salicylate Synthase, MbtI, in Complex with an Inhibitor with Cyclopropyl R-Group
Authors : Chi, G.; Bulloch, E.M.M.; Manos-Turvey, A.; Payne, R.J.; Lott, J.S.; TB Structural Genomics Consortium (TBSGC)
Deposited on : 2011-05-06
Resolution : 2.29 Å(reported)

This is a full wwPDB validation report for a publicly released PDB entry.
We welcome your comments at validation@mail.wwpdb.org
A user guide is available at <http://wwpdb.org/ValidationPDFNotes.html>

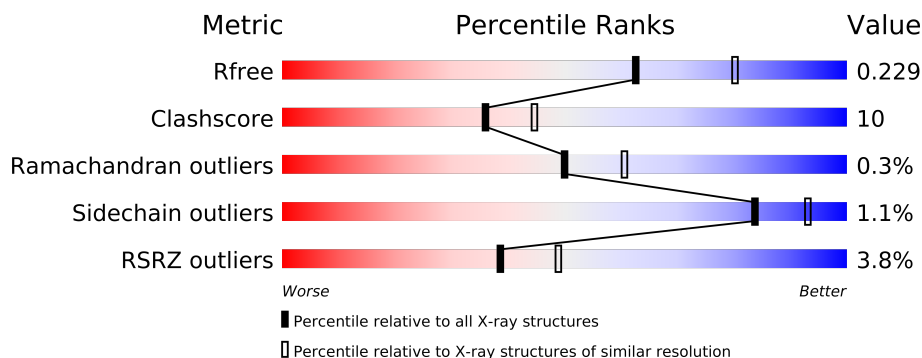
The following versions of software and data (see [references](#)) were used in the production of this report:

MolProbity	:	4.02b-467
Mogul	:	1.15 2013
Xtriage (Phenix)	:	dev-1323
EDS	:	stable22639
Percentile statistics	:	21963
Refmac	:	5.8.0049
CCP4	:	6.3.0 (Settle)
Ideal geometry (proteins)	:	Engh & Huber (2001)
Ideal geometry (DNA, RNA)	:	Parkinson et. al. (1996)
Validation Pipeline (wwPDB-VP)	:	stable22683

1 Overall quality at a glance

The reported resolution of this entry is 2.29 Å.

Percentile scores (ranging between 0-100) for global validation metrics of the entry are shown in the following graphic. The table shows the number of entries on which the scores are based.



Metric	Whole archive (#Entries)	Similar resolution (#Entries, resolution range(Å))
R_{free}	66092	2929 (2.30-2.30)
Clashscore	79885	3679 (2.30-2.30)
Ramachandran outliers	78287	3642 (2.30-2.30)
Sidechain outliers	78261	3641 (2.30-2.30)
RSRZ outliers	66119	2930 (2.30-2.30)

The table below summarises the geometric issues observed across the polymeric chains and their fit to the electron density. The red, orange, yellow and green segments on the lower bar indicate the fraction of residues that contain outliers for ≥ 3 , 2, 1 and 0 types of geometric quality criteria. The upper red bar (where present) indicates the fraction of residues that have poor fit to the electron density.

Mol	Chain	Length	Quality of chain
1	A	450	
1	B	450	
1	C	450	
1	D	450	

2 Entry composition i

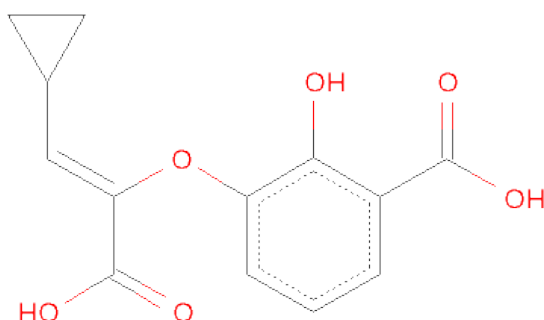
There are 4 unique types of molecules in this entry. The entry contains 13158 atoms, of which 0 are hydrogen and 0 are deuterium.

In the tables below, the ZeroOcc column contains the number of atoms modelled with zero occupancy, the AltConf column contains the number of residues with at least one atom in alternate conformation and the Trace column contains the number of residues modelled with at most 2 atoms.

- Molecule 1 is a protein called Isochorismate synthase/isochorismate-pyruvatelyase mbtI.

Mol	Chain	Residues	Atoms					ZeroOcc	AltConf	Trace
1	A	418	Total	C	N	O	S	0	1	0
			3143	1977	559	597	10			
1	B	432	Total	C	N	O	S	0	0	0
			3231	2027	580	614	10			
1	C	430	Total	C	N	O	S	0	0	0
			3241	2035	579	617	10			
1	D	420	Total	C	N	O	S	0	0	0
			3130	1971	552	597	10			

- Molecule 2 is 3-{[(Z)-1-CARBOXY-2-CYCLOPROPYLETHENYL]OXY}-2-HYDROXYB ENZOICACID (three-letter code: RVC) (formula: C₁₃H₁₂O₆).



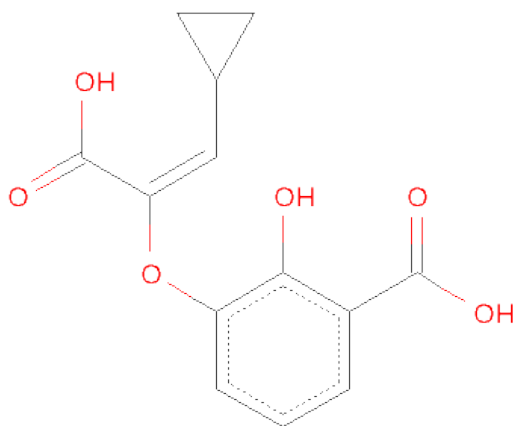
Mol	Chain	Residues	Atoms			ZeroOcc	AltConf
2	A	1	Total	C	O	0	0
			19	13	6		
2	B	1	Total	C	O	0	0
			19	13	6		

Continued on next page...

Continued from previous page...

Mol	Chain	Residues	Atoms			ZeroOcc	AltConf
2	C	1	Total	C	O	0	1
			19	13	6		
2	D	1	Total	C	O	0	0
			19	13	6		

- Molecule 3 is 3-{[(E)-1-CARBOXY-2-CYCLOPROPYLETHENYL]OXY}-2-HYDROXYB ENZOICACID (three-letter code: VCE) (formula: C₁₃H₁₂O₆).



Mol	Chain	Residues	Atoms			ZeroOcc	AltConf
3	C	1	Total	C	O	0	1
			19	13	6		

- Molecule 4 is water.

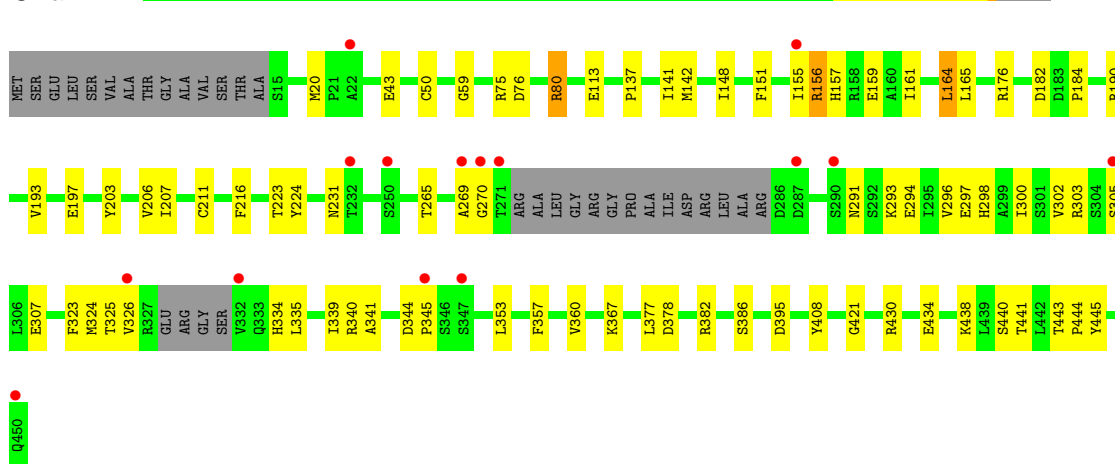
Mol	Chain	Residues	Atoms		ZeroOcc	AltConf
4	A	70	Total	O	0	0
			70	70		
4	B	89	Total	O	0	0
			89	89		
4	C	109	Total	O	0	0
			109	109		
4	D	50	Total	O	0	0
			50	50		

3 Residue-property plots

These plots are drawn for all protein, RNA and DNA chains in the entry. The first graphic for a chain summarises the proportions of errors displayed in the second graphic. The second graphic shows the sequence view annotated by issues in geometry and electron density. Residues are color-coded according to the number of geometric quality criteria for which they contain at least one outlier: green = 0, yellow = 1, orange = 2 and red = 3 or more. A red dot above a residue indicates a poor fit to the electron density ($RSRZ > 2$). Stretches of 2 or more consecutive residues without any outlier are shown as a green connector. Residues present in the sample, but not in the model, are shown in grey.

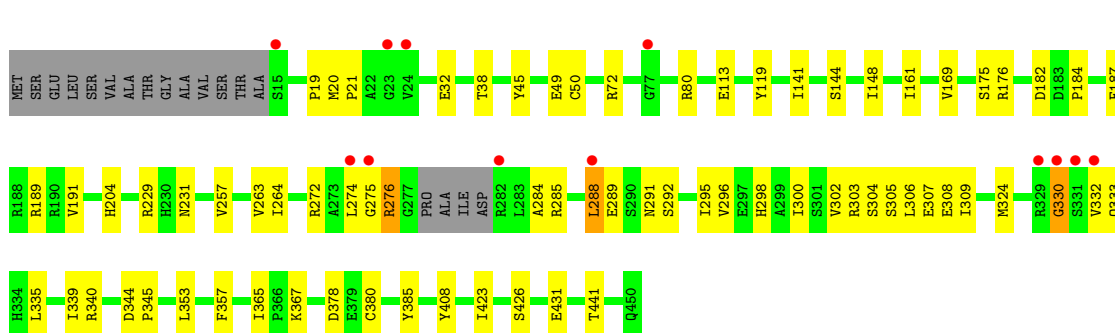
- Molecule 1: Isochorismate synthase/isochorismate-pyruvatelyase mbtI

Chain A:



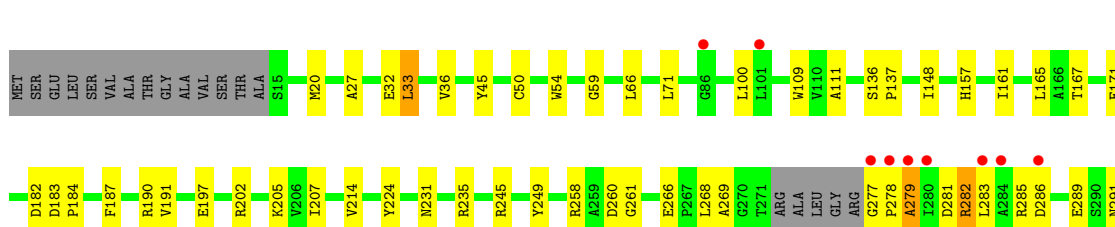
- Molecule 1: Isochorismate synthase/isochorismate-pyruvatelyase mbtI

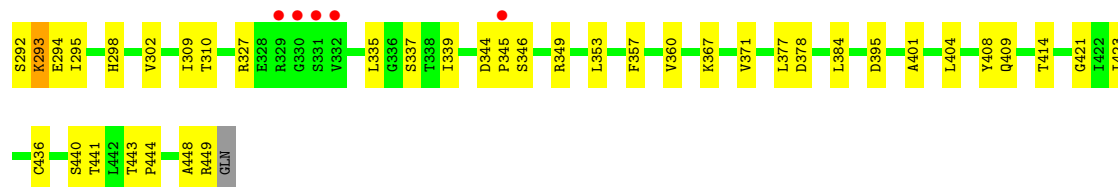
Chain B:



- Molecule 1: Isochorismate synthase/isochorismate-pyruvatelyase mbtI

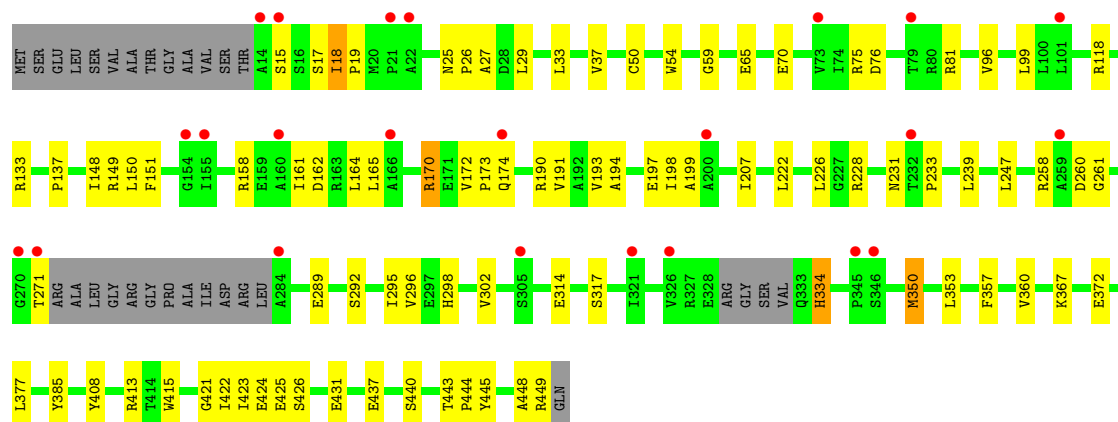
Chain C:





- Molecule 1: Isochorismate synthase/isochorismate-pyruvatelyase mbtI

Chain D:



4 Data and refinement statistics

Property	Value	Source
Space group	P 1 21 1	Depositor
Cell constants a, b, c, α , β , γ	87.15Å 115.94Å 95.85Å 90.00° 91.44° 90.00°	Depositor
Resolution (Å)	19.73 – 2.29 19.64 – 2.29	Depositor EDS
% Data completeness (in resolution range)	(Not available) (19.73-2.29) 99.1 (19.64-2.29)	Depositor EDS
R_{merge}	(Not available)	Depositor
R_{sym}	(Not available)	Depositor
$\langle I/\sigma(I) \rangle$ ¹	1.58 (at 2.30Å)	Xtriage
Refinement program	BUSTER 2.8.0	Depositor
R, R_{free}	0.199 , 0.231 0.213 , 0.229	Depositor DCC
R_{free} test set	4239 reflections (5.27%)	DCC
Wilson B-factor (Å ²)	37.7	Xtriage
Anisotropy	0.063	Xtriage
Bulk solvent k_{sol} (e/Å ³), B_{sol} (Å ²)	0.35 , 40.5	EDS
Estimated twinning fraction	0.012 for h,-k,-l	Xtriage
L-test for twinning	$\langle L \rangle = 0.53$, $\langle L^2 \rangle = 0.38$	Xtriage
Outliers	4 of 84651 reflections (0.005%)	Xtriage
F_o, F_c correlation	0.95	EDS
Total number of atoms	13158	wwPDB-VP
Average B, all atoms (Å ²)	42.0	wwPDB-VP

Xtriage's analysis on translational NCS is as follows: *The largest off-origin peak in the Patterson function is 3.73% of the height of the origin peak. No significant pseudotranslation is detected.*

¹Intensities estimated from amplitudes.

5 Model quality ⓘ

5.1 Standard geometry ⓘ

Bond lengths and bond angles in the following residue types are not validated in this section: RVC, VCE

The Z score for a bond length (or angle) is the number of standard deviations the observed value is removed from the expected value. A bond length (or angle) with $|Z| > 5$ is considered an outlier worth inspection. RMSZ is the root-mean-square of all Z scores of the bond lengths (or angles).

Mol	Chain	Bond lengths		Bond angles	
		RMSZ	$\# Z > 5$	RMSZ	$\# Z > 5$
1	A	1.50	5/3198 (0.2%)	0.79	1/4350 (0.0%)
1	B	1.51	8/3287 (0.2%)	0.79	1/4472 (0.0%)
1	C	1.54	7/3298 (0.2%)	0.80	1/4483 (0.0%)
1	D	1.37	6/3185 (0.2%)	0.76	0/4335
All	All	1.48	26/12968 (0.2%)	0.79	3/17640 (0.0%)

Chiral center outliers are detected by calculating the chiral volume of a chiral center and verifying if the center is modelled as a planar moiety or with the opposite hand. A planarity outlier is detected by checking planarity of atoms in a peptide group, atoms in a mainchain group or atoms of a sidechain that are expected to be planar.

Mol	Chain	#Chirality outliers	#Planarity outliers
1	A	0	1

All (26) bond length outliers are listed below:

Mol	Chain	Res	Type	Atoms	Z	Observed(Å)	Ideal(Å)
1	B	408	TYR	CD1-CE1	-6.34	1.29	1.39
1	C	436	CYS	CB-SG	-6.11	1.71	1.82
1	C	50	CYS	CB-SG	-6.05	1.72	1.82
1	D	50	CYS	CB-SG	-5.87	1.72	1.81
1	C	408	TYR	CD1-CE1	-5.84	1.30	1.39
1	B	50	CYS	CB-SG	-5.73	1.72	1.81
1	B	408	TYR	CD2-CE2	-5.63	1.30	1.39
1	A	211	CYS	CB-SG	-5.61	1.72	1.81
1	A	408	TYR	CD1-CE1	-5.58	1.30	1.39
1	B	385	TYR	CD2-CE2	-5.57	1.30	1.39
1	D	408	TYR	CD1-CE1	-5.57	1.31	1.39
1	C	249	TYR	CD2-CE2	-5.52	1.31	1.39
1	A	50	CYS	CB-SG	-5.50	1.72	1.81
1	A	224	TYR	CD1-CE1	-5.46	1.31	1.39

Continued on next page...

Continued from previous page...

Mol	Chain	Res	Type	Atoms	Z	Observed(Å)	Ideal(Å)
1	B	49	GLU	CD-OE2	-5.43	1.19	1.25
1	C	45	TYR	CD2-CE2	-5.40	1.31	1.39
1	D	385	TYR	CD2-CE2	-5.38	1.31	1.39
1	D	372	GLU	CD-OE2	-5.25	1.19	1.25
1	C	224	TYR	CD1-CE1	-5.19	1.31	1.39
1	B	45	TYR	CD2-CE2	-5.19	1.31	1.39
1	D	408	TYR	CD2-CE2	-5.18	1.31	1.39
1	C	249	TYR	CD1-CE1	-5.18	1.31	1.39
1	B	380	CYS	CB-SG	-5.16	1.73	1.81
1	A	113	GLU	CD-OE2	-5.11	1.20	1.25
1	D	385	TYR	CD1-CE1	-5.08	1.31	1.39
1	B	113	GLU	CD-OE2	-5.05	1.20	1.25

All (3) bond angle outliers are listed below:

Mol	Chain	Res	Type	Atoms	Z	Observed(°)	Ideal(°)
1	C	395	ASP	CB-CG-OD1	5.55	123.30	118.30
1	A	395	ASP	CB-CG-OD1	5.42	123.18	118.30
1	B	189	ARG	NE-CZ-NH1	-5.07	117.76	120.30

There are no chirality outliers.

All (1) planarity outliers are listed below:

Mol	Chain	Res	Type	Group
1	A	80[A]	ARG	Mainchain

5.2 Close contacts ⓘ

In the following table, the Non-H and H(model) columns list the number of non-hydrogen atoms and hydrogen atoms in the chain respectively. The H(added) column lists the number of hydrogens added by MolProbity. The Clashes column lists the number of clashes within the asymmetric unit, and the number in parentheses is this value normalized per 1000 atoms of the molecule in the chain. The Symm-Clashes column gives symmetry related clashes, in the same way as for the Clashes column.

Mol	Chain	Non-H	H(model)	H(added)	Clashes	Symm-Clashes
1	A	3143	0	3087	66	0
1	B	3231	0	3174	49	0
1	C	3241	0	3210	75	0
1	D	3130	0	3061	75	0
2	A	19	0	9	1	0

Continued on next page...

Continued from previous page...

Mol	Chain	Non-H	H(model)	H(added)	Clashes	Symm-Clashes
2	B	19	0	9	0	0
2	C	19	0	9	2	0
2	D	19	0	9	0	0
3	C	19	0	9	1	0
4	A	70	0	0	0	0
4	B	89	0	0	2	0
4	C	109	0	0	2	0
4	D	50	0	0	3	0
All	All	13158	0	12577	264	0

Clashscore is defined as the number of clashes calculated for the entry per 1000 atoms (including hydrogens) of the entry. The overall clashscore for this entry is 10.

All (264) close contacts within the same asymmetric unit are listed below.

Atom-1	Atom-2	Distance(Å)	Clash(Å)
1:A:80[B]:ARG:HG2	1:A:80[B]:ARG:HH11	1.00	1.09
1:D:271:THR:H	1:D:334:HIS:HB3	1.17	1.02
1:D:174:GLN:HG3	4:D:501:HOH:O	1.59	1.01
1:A:80[B]:ARG:CG	1:A:80[B]:ARG:HH11	1.72	1.00
1:A:80[B]:ARG:HG2	1:A:80[B]:ARG:NH1	1.66	0.93
1:A:20:MET:CE	1:A:148:ILE:HG13	1.99	0.92
1:D:18:ILE:HD12	1:D:19:PRO:O	1.68	0.91
1:A:303:ARG:O	1:A:307:GLU:HG3	1.71	0.89
1:D:158:ARG:O	1:D:161:ILE:HG22	1.74	0.85
1:C:283:LEU:HD22	1:C:286:ASP:OD2	1.77	0.84
1:C:448:ALA:O	1:C:449:ARG:HB2	1.76	0.84
1:B:292:SER:O	1:B:296:VAL:HG23	1.76	0.84
1:D:118:ARG:HH21	1:D:118:ARG:HG3	1.41	0.84
1:D:170:ARG:HD2	1:D:222:LEU:HD21	1.58	0.84
1:D:431:GLU:HA	1:D:431:GLU:OE2	1.79	0.82
1:A:164:LEU:O	1:A:164:LEU:HD13	1.79	0.81
1:A:20:MET:HE1	1:A:148:ILE:CG1	2.10	0.81
1:D:33:LEU:HD22	1:D:164:LEU:HD23	1.61	0.81
1:C:20:MET:CE	1:C:148:ILE:HG13	2.12	0.80
1:B:231:ASN:OD1	1:B:441:THR:HG23	1.82	0.80
1:A:156:ARG:HD3	1:A:156:ARG:H	1.47	0.79
1:D:33:LEU:HD22	1:D:164:LEU:CD2	2.13	0.79
1:A:291:ASN:HD22	1:A:294:GLU:HG2	1.49	0.76
1:D:33:LEU:CD2	1:D:164:LEU:HD23	2.16	0.76
1:A:20:MET:HE1	1:A:148:ILE:HG13	1.65	0.75
1:B:288:LEU:HD13	1:B:289:GLU:H	1.51	0.75
1:A:231:ASN:OD1	1:A:441:THR:HG23	1.86	0.75

Continued on next page...

Continued from previous page...

Atom-1	Atom-2	Distance(Å)	Clash(Å)
1:D:33:LEU:O	1:D:37:VAL:HG23	1.87	0.75
1:D:33:LEU:HD12	1:D:37:VAL:HG21	1.69	0.74
1:C:279:ALA:O	1:C:282:ARG:HB2	1.87	0.74
1:A:20:MET:CE	1:A:148:ILE:CG1	2.64	0.73
1:D:18:ILE:HD11	1:D:148:ILE:HD12	1.69	0.73
1:A:291:ASN:ND2	1:A:294:GLU:HG2	2.04	0.72
1:A:156:ARG:N	1:A:156:ARG:HD3	2.05	0.71
1:C:205:LYS:HG3	1:C:423:ILE:HG22	1.71	0.70
1:D:25:ASN:OD1	1:D:26:PRO:HD2	1.90	0.70
1:A:20:MET:HE2	1:A:148:ILE:CD1	2.22	0.70
1:D:161:ILE:HG23	1:D:162:ASP:N	2.06	0.70
1:B:229:ARG:HH21	1:C:171:GLU:HG3	1.55	0.70
1:D:448:ALA:O	1:D:449:ARG:HB2	1.92	0.69
1:B:288:LEU:HD13	1:B:289:GLU:N	2.06	0.69
1:B:285:ARG:O	1:B:288:LEU:CD1	2.40	0.69
1:D:18:ILE:CD1	1:D:19:PRO:O	2.41	0.69
1:C:157:HIS:O	1:C:161:ILE:HG13	1.92	0.68
1:D:170:ARG:HH11	1:D:222:LEU:HD21	1.57	0.68
1:B:19:PRO:O	1:B:21:PRO:HD3	1.94	0.67
1:A:164:LEU:CD1	1:A:164:LEU:C	2.63	0.67
1:A:20:MET:CE	1:A:148:ILE:HD11	2.26	0.65
1:A:305:SER:HB2	1:A:339:ILE:HD12	1.78	0.65
1:B:274:LEU:CB	1:B:330:GLY:O	2.44	0.65
1:A:20:MET:HE2	1:A:148:ILE:HD11	1.79	0.65
1:D:258:ARG:NH1	1:D:260:ASP:OD2	2.29	0.65
1:D:174:GLN:CG	4:D:501:HOH:O	2.32	0.65
1:C:197:GLU:HB3	1:C:202:ARG:HD3	1.79	0.64
1:A:20:MET:CE	1:A:148:ILE:CD1	2.75	0.64
1:D:437:GLU:O	1:D:440:SER:HB2	1.98	0.64
1:D:413:ARG:HD3	1:D:415:TRP:CE3	2.33	0.64
1:A:156:ARG:CD	1:A:156:ARG:H	2.03	0.63
1:D:425:GLU:OE1	1:D:425:GLU:N	2.30	0.63
1:C:281:ASP:O	1:C:283:LEU:N	2.28	0.63
1:A:164:LEU:C	1:A:164:LEU:HD13	2.19	0.62
1:C:20:MET:HE1	1:C:148:ILE:HG13	1.82	0.62
1:C:231:ASN:OD1	1:C:441:THR:HG23	2.00	0.62
1:A:305:SER:HB2	1:A:339:ILE:CD1	2.28	0.62
1:C:298:HIS:HE2	1:C:337:SER:HG	1.44	0.62
1:D:260:ASP:OD1	1:D:260:ASP:C	2.37	0.61
1:B:285:ARG:O	1:B:288:LEU:HD13	2.01	0.61
1:C:283:LEU:C	1:C:285:ARG:H	2.03	0.61
1:C:260:ASP:OD1	1:C:260:ASP:C	2.39	0.60

Continued on next page...

Continued from previous page...

Atom-1	Atom-2	Distance(Å)	Clash(Å)
1:A:270:GLY:HA2	1:A:334:HIS:CE1	2.35	0.60
1:D:75:ARG:O	1:D:76:ASP:HB2	2.01	0.60
1:A:161:ILE:HG22	1:A:165:LEU:HD12	1.84	0.60
1:C:20:MET:HE2	1:C:148:ILE:HG13	1.83	0.59
1:A:155:ILE:HG22	1:A:159:GLU:OE2	2.02	0.59
1:D:423:ILE:O	1:D:426:SER:HB2	2.02	0.59
1:C:20:MET:HE1	1:C:148:ILE:CG1	2.32	0.59
1:C:344:ASP:CG	1:C:345:PRO:HD2	2.23	0.58
1:C:33:LEU:O	1:C:33:LEU:HD12	2.03	0.58
1:D:194:ALA:O	1:D:198:ILE:HG13	2.04	0.58
1:A:190:ARG:HD2	1:A:377:LEU:O	2.04	0.58
1:D:271:THR:N	1:D:334:HIS:HB3	2.03	0.58
1:D:161:ILE:CG2	1:D:162:ASP:N	2.67	0.58
1:D:350:MET:CE	1:D:353:LEU:HD23	2.33	0.57
1:C:278:PRO:O	1:C:279:ALA:HB3	2.02	0.57
1:C:245:ARG:NH1	1:C:409:GLN:OE1	2.36	0.57
1:A:75:ARG:O	1:A:76:ASP:HB2	2.05	0.57
1:B:305:SER:HB3	1:B:339:ILE:HD13	1.86	0.56
1:A:207:ILE:HG13	1:A:421:GLY:HA2	1.88	0.56
1:C:182:ASP:OD2	1:C:184:PRO:HG3	2.05	0.55
1:D:33:LEU:CD1	1:D:37:VAL:HG21	2.37	0.55
1:C:440:SER:HA	1:C:443:THR:OG1	2.07	0.55
1:C:292:SER:HB3	1:C:293:LYS:HZ2	1.71	0.55
1:B:176:ARG:NH2	4:B:473:HOH:O	2.34	0.55
1:B:119:TYR:OH	1:B:367:LYS:HD2	2.07	0.55
1:D:360:VAL:HG23	1:D:367:LYS:HE2	1.88	0.55
1:B:306:LEU:O	1:B:309:ILE:HG22	2.06	0.55
1:D:207:ILE:HG13	1:D:421:GLY:HA2	1.89	0.55
1:C:205:LYS:HG3	1:C:423:ILE:CG2	2.37	0.55
1:D:158:ARG:HA	1:D:161:ILE:HG22	1.88	0.55
1:B:303:ARG:O	1:B:307:GLU:HG3	2.07	0.55
1:D:353:LEU:O	1:D:357:PHE:HB2	2.07	0.54
1:D:59:GLY:O	1:D:137:PRO:HA	2.08	0.54
1:C:291:ASN:O	1:C:295:ILE:HG13	2.07	0.54
1:B:175:SER:O	1:C:167:THR:O	2.26	0.54
1:D:118:ARG:NH2	1:D:118:ARG:HG3	2.14	0.54
1:D:193:VAL:O	1:D:197:GLU:HG3	2.08	0.54
1:A:269:ALA:HB3	1:A:335:LEU:HB2	1.90	0.54
1:C:283:LEU:C	1:C:285:ARG:N	2.61	0.53
1:D:25:ASN:OD1	1:D:26:PRO:CD	2.54	0.53
1:C:187:PHE:O	1:C:191:VAL:HG23	2.09	0.52
1:B:187:PHE:O	1:B:191:VAL:HG23	2.10	0.52

Continued on next page...

Continued from previous page...

Atom-1	Atom-2	Distance(Å)	Clash(Å)
1:A:176:ARG:HG2	1:A:216:PHE:CZ	2.45	0.52
1:C:109:TRP:CD2	1:C:384:LEU:HD11	2.45	0.52
1:D:15:SER:HB3	1:D:151:PHE:CE1	2.45	0.52
1:A:265:THR:HG22	1:A:339:ILE:HB	1.90	0.52
1:C:235:ARG:HG3	1:C:401:ALA:HB2	1.92	0.51
1:C:59:GLY:O	1:C:137:PRO:HA	2.10	0.51
1:D:70:GLU:OE1	1:D:81:ARG:NH1	2.43	0.51
1:B:141:ILE:HD11	1:B:161:ILE:HD11	1.92	0.51
1:C:302:VAL:HG13	1:C:339:ILE:HD11	1.91	0.51
1:D:27:ALA:HB2	1:D:54:TRP:CZ2	2.45	0.51
1:C:269:ALA:O	1:C:335:LEU:HB2	2.10	0.51
1:D:149:ARG:C	1:D:150:LEU:HD23	2.31	0.51
1:D:18:ILE:HG13	1:D:18:ILE:O	2.10	0.51
1:D:199:ALA:HA	1:D:424:GLU:OE2	2.11	0.51
1:A:305:SER:CB	1:A:339:ILE:HD12	2.41	0.51
1:A:353:LEU:O	1:A:357:PHE:HB2	2.10	0.51
1:D:174:GLN:NE2	4:D:501:HOH:O	2.34	0.51
1:A:340:ARG:HG2	1:A:341:ALA:N	2.26	0.51
1:A:323:PHE:CZ	1:A:324:MET:HG3	2.46	0.50
1:C:353:LEU:O	1:C:357:PHE:HB2	2.12	0.50
1:C:367:LYS:O	1:C:371:VAL:HG23	2.11	0.50
1:B:275:GLY:O	1:B:276:ARG:CB	2.60	0.50
1:A:142:MET:HG3	1:A:151:PHE:HE2	1.77	0.50
1:B:264:ILE:CD1	1:B:340:ARG:HG3	2.42	0.50
1:D:226:LEU:HG	1:D:445:TYR:HB3	1.93	0.50
1:A:223:THR:HG23	1:A:445:TYR:O	2.13	0.49
1:A:440:SER:HA	1:A:443:THR:OG1	2.12	0.49
1:A:141:ILE:HD11	1:A:161:ILE:HD11	1.93	0.49
1:C:214:VAL:HB	1:C:414:THR:HG22	1.94	0.49
1:A:434:GLU:HG2	1:A:438:LYS:HE3	1.94	0.49
1:B:284:ALA:O	1:B:288:LEU:HD12	2.13	0.49
1:B:32:GLU:HG3	1:B:169:VAL:HB	1.94	0.49
1:C:109:TRP:CE2	1:C:384:LEU:HD11	2.48	0.48
1:C:291:ASN:OD1	1:C:294:GLU:HG2	2.13	0.48
1:B:204:HIS:HB3	1:B:365:ILE:HG22	1.94	0.48
1:C:404:LEU:HD13	2:C:451[A]:RVC:C1	2.43	0.48
1:D:413:ARG:HD3	1:D:415:TRP:CZ3	2.47	0.48
1:D:96:VAL:O	1:D:99:LEU:HB2	2.13	0.48
1:D:334:HIS:N	1:D:334:HIS:CD2	2.81	0.48
1:D:289:GLU:O	1:D:295:ILE:HD11	2.14	0.48
1:A:298:HIS:CD2	1:A:324:MET:HG2	2.48	0.48
1:B:38:THR:OG1	4:B:503:HOH:O	2.20	0.48

Continued on next page...

Continued from previous page...

Atom-1	Atom-2	Distance(Å)	Clash(Å)
1:C:344:ASP:OD1	1:C:346:SER:OG	2.30	0.48
1:B:304:SER:O	1:B:308:GLU:HG3	2.14	0.48
1:B:332:VAL:HG13	1:B:333:GLN:N	2.29	0.48
1:A:20:MET:HE2	1:A:20:MET:HA	1.95	0.47
1:D:190:ARG:HD2	1:D:377:LEU:O	2.14	0.47
1:A:164:LEU:CD1	1:A:164:LEU:O	2.56	0.47
1:B:272:ARG:O	1:B:333:GLN:N	2.38	0.47
1:C:409:GLN:NE2	4:C:503:HOH:O	2.22	0.47
1:B:288:LEU:C	1:B:288:LEU:HD22	2.35	0.47
1:D:239:LEU:HD12	1:D:239:LEU:O	2.14	0.47
1:D:425:GLU:CD	1:D:425:GLU:N	2.68	0.47
1:D:443:THR:N	1:D:444:PRO:CD	2.77	0.47
1:D:292:SER:O	1:D:296:VAL:HG23	2.15	0.47
1:A:43:GLU:HB2	1:A:59:GLY:HA2	1.97	0.47
1:D:18:ILE:HD12	1:D:19:PRO:N	2.29	0.47
1:B:288:LEU:HD23	1:B:335:LEU:HG	1.96	0.47
1:C:258:ARG:NH2	1:C:260:ASP:OD2	2.47	0.47
1:C:281:ASP:C	1:C:283:LEU:N	2.68	0.47
1:C:344:ASP:OD1	1:C:345:PRO:HD2	2.15	0.47
1:A:325:THR:CG2	1:A:326:VAL:N	2.77	0.47
1:C:20:MET:CE	1:C:148:ILE:CG1	2.85	0.47
1:D:298:HIS:O	1:D:302:VAL:HG23	2.15	0.47
1:A:296:VAL:O	1:A:300:ILE:HG13	2.15	0.46
1:D:165:LEU:HA	1:D:165:LEU:HD23	1.57	0.46
1:A:344:ASP:OD1	1:A:345:PRO:HD2	2.14	0.46
1:C:269:ALA:HB3	1:C:298:HIS:HB2	1.97	0.46
1:B:431:GLU:HA	1:B:431:GLU:OE2	2.16	0.46
2:A:451:RVC:O2	2:A:451:RVC:OB	2.29	0.46
1:C:278:PRO:HA	1:C:282:ARG:CG	2.44	0.46
1:A:193:VAL:O	1:A:197:GLU:HG3	2.16	0.46
1:B:353:LEU:O	1:B:357:PHE:HB2	2.15	0.46
1:C:309:ILE:CG2	1:C:310:THR:N	2.78	0.46
1:D:18:ILE:HD12	1:D:18:ILE:C	2.37	0.46
1:D:260:ASP:OD1	1:D:261:GLY:N	2.49	0.46
1:B:344:ASP:HA	1:B:345:PRO:HD3	1.82	0.46
1:D:65:GLU:HG2	1:D:133:ARG:HD2	1.97	0.46
1:A:182:ASP:HB3	1:A:184:PRO:HD3	1.98	0.45
1:C:404:LEU:HD13	3:C:1451[B]:VCE:C1	2.46	0.45
1:B:182:ASP:HB3	1:B:184:PRO:HD3	1.98	0.45
1:C:278:PRO:O	1:C:279:ALA:CB	2.64	0.45
1:C:293:LYS:NZ	4:C:553:HOH:O	2.46	0.45
1:A:298:HIS:O	1:A:302:VAL:HG23	2.16	0.45

Continued on next page...

Continued from previous page...

Atom-1	Atom-2	Distance(Å)	Clash(Å)
1:D:239:LEU:HD12	1:D:239:LEU:C	2.38	0.45
1:A:325:THR:HG22	1:A:326:VAL:N	2.30	0.45
1:C:277:GLY:HA2	1:C:278:PRO:HD3	1.76	0.45
1:B:20:MET:HE1	1:B:148:ILE:CG1	2.46	0.44
1:C:260:ASP:OD1	1:C:261:GLY:N	2.50	0.44
1:D:247:LEU:C	1:D:247:LEU:HD12	2.38	0.44
1:B:288:LEU:CD2	1:B:335:LEU:HG	2.48	0.44
1:B:19:PRO:O	1:B:21:PRO:CD	2.65	0.44
1:B:291:ASN:O	1:B:295:ILE:HG13	2.18	0.44
1:A:156:ARG:HH11	1:A:157:HIS:CE1	2.35	0.44
1:C:66:LEU:HD13	1:C:71:LEU:HD23	1.98	0.44
1:D:158:ARG:O	1:D:161:ILE:CG2	2.58	0.44
1:C:298:HIS:O	1:C:302:VAL:HG23	2.17	0.44
1:A:269:ALA:HB3	1:A:335:LEU:CB	2.48	0.44
1:C:27:ALA:HB2	1:C:54:TRP:CZ2	2.52	0.44
1:D:314:GLU:O	1:D:317:SER:OG	2.29	0.44
1:C:100:LEU:HD12	1:C:349:ARG:NH2	2.33	0.44
1:D:158:ARG:C	1:D:161:ILE:HG22	2.36	0.43
1:C:100:LEU:CD1	1:C:349:ARG:HH22	2.31	0.43
1:D:118:ARG:NH2	1:D:118:ARG:CG	2.75	0.43
1:A:443:THR:N	1:A:444:PRO:CD	2.81	0.43
1:B:141:ILE:CD1	1:B:161:ILE:HD11	2.48	0.43
1:B:72:ARG:HA	1:B:80:ARG:O	2.19	0.43
1:C:190:ARG:HD2	1:C:377:LEU:O	2.19	0.43
1:C:291:ASN:HD21	1:C:293:LYS:HD2	1.83	0.43
1:A:176:ARG:HG2	1:A:216:PHE:CE2	2.53	0.43
1:D:425:GLU:CD	1:D:425:GLU:H	2.18	0.43
1:A:296:VAL:HG13	1:A:297:GLU:N	2.34	0.43
1:A:20:MET:HE1	1:A:148:ILE:CD1	2.45	0.43
1:A:344:ASP:CG	1:A:345:PRO:HD2	2.39	0.43
1:C:100:LEU:HD12	1:C:349:ARG:HH22	1.84	0.43
1:C:285:ARG:O	1:C:289:GLU:HG3	2.18	0.43
1:B:264:ILE:HD11	1:B:340:ARG:HG3	2.01	0.43
1:C:207:ILE:HG13	1:C:421:GLY:HA2	2.01	0.43
1:B:298:HIS:O	1:B:302:VAL:HG23	2.18	0.43
1:B:20:MET:HA	1:B:21:PRO:HD2	1.71	0.43
1:A:298:HIS:HD2	1:A:324:MET:HG2	1.83	0.43
1:A:59:GLY:O	1:A:137:PRO:HA	2.18	0.42
1:B:257:VAL:HG22	1:B:263:VAL:HG13	2.00	0.42
1:D:29:LEU:O	1:D:33:LEU:HD23	2.19	0.42
1:A:382:ARG:HD3	1:A:386:SER:OG	2.19	0.42
1:C:266:GLU:OE1	1:C:327:ARG:NH1	2.51	0.42

Continued on next page...

Continued from previous page...

Atom-1	Atom-2	Distance(Å)	Clash(Å)
1:B:20:MET:HE3	1:B:144:SER:O	2.19	0.42
1:C:183:ASP:N	1:C:184:PRO:HD3	2.33	0.42
1:B:288:LEU:CD1	1:B:288:LEU:N	2.82	0.42
1:B:423:ILE:O	1:B:426:SER:HB2	2.19	0.42
1:C:109:TRP:HZ3	1:C:111:ALA:HB2	1.85	0.42
1:B:298:HIS:CD2	1:B:324:MET:HG3	2.55	0.42
1:A:360:VAL:HG23	1:A:367:LYS:HE2	2.02	0.42
1:B:264:ILE:HD13	1:B:340:ARG:HG3	2.02	0.41
1:A:203:TYR:CE1	1:A:206:VAL:HG13	2.54	0.41
1:D:33:LEU:O	1:D:37:VAL:CG2	2.64	0.41
1:D:228:ARG:NH1	1:D:231:ASN:O	2.54	0.41
1:C:360:VAL:HG23	1:C:367:LYS:HE3	2.01	0.41
1:C:165:LEU:HA	1:C:165:LEU:HD23	1.91	0.41
1:B:300:ILE:HG21	1:B:300:ILE:HD13	1.84	0.41
1:D:17:SER:C	1:D:18:ILE:CG2	2.89	0.41
1:C:136:SER:HA	1:C:137:PRO:HD3	1.96	0.41
1:C:360:VAL:CG2	1:C:367:LYS:HE3	2.51	0.41
1:C:404:LEU:HD13	2:C:451[A]:RVC:C2	2.51	0.41
1:A:293:LYS:O	1:A:296:VAL:HG12	2.21	0.41
1:A:161:ILE:HG22	1:A:165:LEU:CD1	2.50	0.41
1:C:293:LYS:H	1:C:293:LYS:NZ	2.18	0.41
1:B:298:HIS:HD2	1:B:324:MET:HG3	1.86	0.41
1:C:32:GLU:O	1:C:36:VAL:HG23	2.21	0.41
1:C:283:LEU:HA	1:C:283:LEU:HD23	1.90	0.40
1:C:443:THR:N	1:C:444:PRO:CD	2.84	0.40
1:D:172:VAL:HA	1:D:173:PRO:HD3	1.91	0.40
1:D:191:VAL:HG13	1:D:422:ILE:HG12	2.04	0.40

There are no symmetry-related clashes.

5.3 Torsion angles

5.3.1 Protein backbone ⓘ

In the following table, the Percentiles column shows the percent Ramachandran outliers of the chain as a percentile score with respect to all X-ray entries followed by that with respect to entries of similar resolution. The Analysed column shows the number of residues for which the backbone conformation was analysed, and the total number of residues.

Mol	Chain	Analysed	Favoured	Allowed	Outliers	Percentiles	
1	A	413/450 (92%)	410 (99%)	3 (1%)	0	100	100

Continued on next page...

Continued from previous page...

Mol	Chain	Analysed	Favoured	Allowed	Outliers	Percentiles	
1	B	428/450 (95%)	421 (98%)	5 (1%)	2 (0%)	38	45
1	C	426/450 (95%)	418 (98%)	6 (1%)	2 (0%)	38	45
1	D	414/450 (92%)	408 (99%)	5 (1%)	1 (0%)	56	68
All	All	1681/1800 (93%)	1657 (99%)	19 (1%)	5 (0%)	50	60

All (5) Ramachandran outliers are listed below:

Mol	Chain	Res	Type
1	B	276	ARG
1	C	282	ARG
1	B	330	GLY
1	C	279	ALA
1	D	233	PRO

5.3.2 Protein sidechains ⓘ

In the following table, the Percentiles column shows the percent sidechain outliers of the chain as a percentile score with respect to all X-ray entries followed by that with respect to entries of similar resolution. The Analysed column shows the number of residues for which the sidechain conformation was analysed, and the total number of residues.

Mol	Chain	Analysed	Rotameric	Outliers	Percentiles	
1	A	318/358 (89%)	314 (99%)	4 (1%)	80	91
1	B	326/358 (91%)	324 (99%)	2 (1%)	92	97
1	C	332/358 (93%)	328 (99%)	4 (1%)	82	92
1	D	314/358 (88%)	310 (99%)	4 (1%)	80	91
All	All	1290/1432 (90%)	1276 (99%)	14 (1%)	84	93

All (14) residues with a non-rotameric sidechain are listed below:

Mol	Chain	Res	Type
1	A	156	ARG
1	A	164	LEU
1	A	378	ASP
1	A	430	ARG
1	B	288	LEU
1	B	378	ASP
1	C	33	LEU

Continued on next page...

Continued from previous page...

Mol	Chain	Res	Type
1	C	268	LEU
1	C	293	LYS
1	C	378	ASP
1	D	18	ILE
1	D	170	ARG
1	D	334	HIS
1	D	350	MET

Some sidechains can be flipped to improve hydrogen bonding and reduce clashes. All (1) such sidechains are listed below:

Mol	Chain	Res	Type
1	A	291	ASN

5.3.3 RNA ⓘ

There are no RNA chains in this entry.

5.4 Non-standard residues in protein, DNA, RNA chains ⓘ

There are no non-standard protein/DNA/RNA residues in this entry.

5.5 Carbohydrates ⓘ

There are no carbohydrates in this entry.

5.6 Ligand geometry ⓘ

5 ligands are modelled in this entry.

In the following table, the Counts columns list the number of bonds (or angles) for which Mogul statistics could be retrieved, the number of bonds (or angles) that are observed in the model and the number of bonds (or angles) that are defined in the chemical component dictionary. The Link column lists molecule types, if any, to which the group is linked. The Z score for a bond length (or angle) is the number of standard deviations the observed value is removed from the expected value. A bond length (or angle) with $|Z| > 2$ is considered an outlier worth inspection. RMSZ is the root-mean-square of all Z scores of the bond lengths (or angles).

Mol	Type	Chain	Res	Link	Bond lengths			Bond angles		
					Counts	RMSZ	$\# Z > 2$	Counts	RMSZ	$\# Z > 2$
2	RVC	A	451	-	20,20,20	2.91	12 (60%)	28,28,28	3.20	14 (50%)

Mol	Type	Chain	Res	Link	Bond lengths			Bond angles		
					Counts	RMSZ	# Z > 2	Counts	RMSZ	# Z > 2
2	RVC	B	451	-	20,20,20	2.67	10 (50%)	28,28,28	2.51	12 (42%)
3	VCE	C	1451[B]	-	20,20,20	3.42	12 (60%)	28,28,28	3.98	10 (35%)
2	RVC	C	451[A]	-	20,20,20	2.47	12 (60%)	28,28,28	2.73	13 (46%)
2	RVC	D	451	-	20,20,20	2.28	7 (35%)	28,28,28	2.62	7 (25%)

In the following table, the Chirals column lists the number of chiral outliers, the number of chiral centers analysed, the number of these observed in the model and the number defined in the chemical component dictionary. Similar counts are reported in the Torsion and Rings columns. '-' means no outliers of that kind were identified.

Mol	Type	Chain	Res	Link	Chirals	Torsions	Rings
2	RVC	A	451	-	-	0/16/18/18	0/1/2/2
2	RVC	B	451	-	-	0/16/18/18	0/1/2/2
3	VCE	C	1451[B]	-	-	0/16/18/18	0/1/2/2
2	RVC	C	451[A]	-	-	0/16/18/18	0/1/2/2
2	RVC	D	451	-	-	0/16/18/18	0/1/2/2

All (53) bond length outliers are listed below:

Mol	Chain	Res	Type	Atoms	Z	Observed(Å)	Ideal(Å)
3	C	1451[B]	VCE	O3-C7	-7.67	1.29	1.39
2	A	451	RVC	C1-C	-5.98	1.36	1.49
2	D	451	RVC	C1-C	-5.86	1.36	1.49
3	C	1451[B]	VCE	C1-C	-5.44	1.37	1.49
2	B	451	RVC	O3-C7	-5.36	1.32	1.39
3	C	1451[B]	VCE	O3-C3	-5.24	1.30	1.40
3	C	1451[B]	VCE	C7-C'	5.02	1.61	1.48
2	C	451[A]	RVC	C1-C	-4.88	1.38	1.49
2	B	451	RVC	C1-C	-4.83	1.38	1.49
2	A	451	RVC	C10-C9	-4.34	1.45	1.51
2	A	451	RVC	O3-C7	-4.19	1.33	1.39
2	B	451	RVC	C10-C9	-4.19	1.45	1.51
3	C	1451[B]	VCE	C3-C2	-4.17	1.34	1.40
3	C	1451[B]	VCE	C1-C2	-3.96	1.34	1.41
2	A	451	RVC	O3-C3	-3.87	1.32	1.40
2	B	451	RVC	O3-C3	-3.60	1.33	1.40
2	D	451	RVC	O3-C3	-3.53	1.33	1.40
2	A	451	RVC	C1-C2	-3.50	1.35	1.41
2	A	451	RVC	C3-C2	-3.48	1.35	1.40
2	C	451[A]	RVC	O3-C3	-3.33	1.34	1.40
2	A	451	RVC	C11-C9	-3.33	1.46	1.51

Continued on next page...

Continued from previous page...

Mol	Chain	Res	Type	Atoms	Z	Observed(Å)	Ideal(Å)
2	C	451[A]	RVC	O2-C2	-3.28	1.29	1.37
3	C	1451[B]	VCE	O2-C2	-3.25	1.29	1.37
3	C	1451[B]	VCE	C8-C7	-3.23	1.29	1.32
2	C	451[A]	RVC	O3-C7	-3.21	1.34	1.39
2	B	451	RVC	C1-C2	-3.18	1.36	1.41
2	D	451	RVC	OB-C	-3.18	1.20	1.30
3	C	1451[B]	VCE	OB-C	-3.17	1.20	1.30
2	A	451	RVC	OB-C	-3.16	1.20	1.30
2	C	451[A]	RVC	C10-C9	-3.12	1.47	1.51
2	D	451	RVC	O3-C7	-3.11	1.35	1.39
2	C	451[A]	RVC	C7-C'	3.09	1.56	1.48
2	C	451[A]	RVC	C1-C2	-3.07	1.36	1.41
2	C	451[A]	RVC	C11-C9	-3.07	1.47	1.51
2	C	451[A]	RVC	OA'-C'	-3.02	1.20	1.30
2	A	451	RVC	O2-C2	-2.90	1.30	1.37
2	B	451	RVC	C11-C9	-2.86	1.47	1.51
2	A	451	RVC	C8-C7	-2.83	1.30	1.32
2	B	451	RVC	O2-C2	-2.81	1.30	1.37
2	B	451	RVC	OB-C	-2.76	1.21	1.30
2	A	451	RVC	OA'-C'	-2.71	1.21	1.30
2	B	451	RVC	OA'-C'	-2.70	1.21	1.30
2	D	451	RVC	C1-C2	-2.69	1.37	1.41
3	C	1451[B]	VCE	OA'-C'	-2.66	1.21	1.30
2	A	451	RVC	C6-C1	-2.49	1.35	1.39
2	C	451[A]	RVC	OB-C	-2.47	1.22	1.30
3	C	1451[B]	VCE	C11-C9	-2.44	1.48	1.51
2	B	451	RVC	C8-C7	-2.31	1.30	1.32
2	D	451	RVC	OA'-C'	-2.30	1.23	1.30
2	C	451[A]	RVC	C3-C2	-2.26	1.37	1.40
2	D	451	RVC	O2-C2	-2.11	1.31	1.37
3	C	1451[B]	VCE	C6-C1	-2.02	1.36	1.39
2	C	451[A]	RVC	C6-C1	-2.01	1.36	1.39

All (56) bond angle outliers are listed below:

Mol	Chain	Res	Type	Atoms	Z	Observed(°)	Ideal(°)
3	C	1451[B]	VCE	C3-O3-C7	-12.30	108.91	117.57
3	C	1451[B]	VCE	O3-C7-C8	-9.96	101.96	119.60
2	A	451	RVC	C3-O3-C7	-8.87	111.33	117.57
3	C	1451[B]	VCE	C10-C9-C8	-8.55	110.04	119.10
2	A	451	RVC	C10-C9-C8	-7.97	110.66	119.10
2	D	451	RVC	C3-O3-C7	-7.92	111.99	117.57

Continued on next page...

Continued from previous page...

Mol	Chain	Res	Type	Atoms	Z	Observed(°)	Ideal(°)
2	C	451[A]	RVC	C10-C9-C8	-7.20	111.47	119.10
2	D	451	RVC	C9-C8-C7	-6.57	117.59	125.66
3	C	1451[B]	VCE	C11-C9-C8	-6.13	112.61	119.10
2	B	451	RVC	C10-C9-C8	-5.82	112.93	119.10
2	B	451	RVC	C9-C8-C7	-5.68	118.68	125.66
2	C	451[A]	RVC	C1-C2-C3	5.59	124.63	119.66
2	A	451	RVC	C1-C2-C3	5.51	124.56	119.66
2	C	451[A]	RVC	C11-C9-C8	-5.45	113.33	119.10
2	D	451	RVC	C10-C9-C8	-4.87	113.94	119.10
2	A	451	RVC	C8-C7-C'	-4.76	113.90	122.48
2	C	451[A]	RVC	C9-C8-C7	-4.74	119.84	125.66
3	C	1451[B]	VCE	C1-C2-C3	4.38	123.55	119.66
2	A	451	RVC	C11-C9-C8	-4.10	114.75	119.10
2	A	451	RVC	C9-C8-C7	-4.08	120.64	125.66
2	B	451	RVC	C3-O3-C7	-4.05	114.72	117.57
2	B	451	RVC	C1-C2-C3	4.05	123.26	119.66
2	D	451	RVC	C8-C7-C'	-4.03	115.21	122.48
3	C	1451[B]	VCE	OA'-C'-OB'	-3.85	114.50	123.62
2	D	451	RVC	C11-C9-C8	-3.80	115.07	119.10
2	C	451[A]	RVC	C8-C7-C'	-3.30	116.52	122.48
2	B	451	RVC	C8-C7-C'	-3.13	116.84	122.48
2	C	451[A]	RVC	O2-C2-C1	-3.03	115.51	120.98
2	B	451	RVC	O2-C2-C1	-3.03	115.52	120.98
2	B	451	RVC	OA'-C'-C7	2.90	121.95	114.66
2	A	451	RVC	C10-C11-C9	-2.79	59.23	60.70
3	C	1451[B]	VCE	C6-C1-C2	-2.75	115.73	118.70
2	D	451	RVC	C2-C1-C	2.70	122.67	119.93
2	C	451[A]	RVC	O3-C7-C'	2.63	122.26	114.55
2	B	451	RVC	C6-C1-C2	-2.61	115.88	118.70
2	B	451	RVC	C11-C9-C8	-2.61	116.33	119.10
2	B	451	RVC	OA'-C'-OB'	-2.58	117.52	123.62
2	C	451[A]	RVC	OA'-C'-OB'	-2.55	117.58	123.62
2	A	451	RVC	C11-C9-C10	2.51	60.60	58.20
2	B	451	RVC	C2-C1-C	2.45	122.42	119.93
2	C	451[A]	RVC	OA'-C'-C7	2.45	120.83	114.66
3	C	1451[B]	VCE	OA'-C'-C7	2.36	120.61	114.66
3	C	1451[B]	VCE	O3-C3-C4	2.36	124.70	118.75
2	A	451	RVC	O2-C2-C1	-2.31	116.81	120.98
2	B	451	RVC	OB-C-OA	-2.30	118.12	123.35
2	A	451	RVC	OB-C-OA	-2.26	118.22	123.35
3	C	1451[B]	VCE	C6-C1-C	2.23	123.62	118.56
2	C	451[A]	RVC	OB-C-OA	-2.22	118.31	123.35

Continued on next page...

Continued from previous page...

Mol	Chain	Res	Type	Atoms	Z	Observed(°)	Ideal(°)
2	A	451	RVC	O3-C3-C4	2.21	124.32	118.75
2	C	451[A]	RVC	OB-C-C1	2.20	122.05	115.47
2	C	451[A]	RVC	C6-C1-C2	-2.20	116.33	118.70
2	A	451	RVC	C4-C3-C2	-2.17	117.79	119.98
2	D	451	RVC	OA'-C'-C7	2.08	119.89	114.66
2	A	451	RVC	C6-C5-C4	2.07	123.44	120.25
2	A	451	RVC	O3-C7-C8	2.03	123.19	119.60
2	C	451[A]	RVC	O3-C3-C4	2.00	123.81	118.75

There are no chirality outliers.

There are no torsion outliers.

There are no ring outliers.

5.7 Other polymers ⓘ

There are no such residues in this entry.

5.8 Polymer linkage issues

There are no chain breaks in this entry.

6 Fit of model and data ⓘ

6.1 Protein, DNA and RNA chains ⓘ

In the following table, the column labelled ‘#RSRZ> 2’ contains the number (and percentage) of RSRZ outliers, followed by percent RSRZ outliers for the chain as percentile scores relative to all X-ray entries and entries of similar resolution. The OWAB column contains the minimum, median, 95th percentile and maximum values of the occupancy-weighted average B-factor per residue. The column labelled ‘Q< 0.9’ lists the number of (and percentage) of residues with an average occupancy less than 0.9.

Mol	Chain	Analysed	<RSRZ>	#RSRZ>2		OWAB(Å ²)	Q<0.9
1	A	418/450 (92%)	-0.10	15 (3%)	41 51	19, 39, 62, 88	8 (1%)
1	B	432/450 (96%)	-0.09	12 (2%)	50 60	20, 37, 67, 77	8 (1%)
1	C	430/450 (95%)	-0.14	14 (3%)	44 54	20, 36, 62, 91	8 (1%)
1	D	420/450 (93%)	0.22	23 (5%)	24 33	23, 49, 80, 90	7 (1%)
All	All	1700/1800 (94%)	-0.03	64 (3%)	38 49	19, 40, 69, 91	31 (1%)

All (64) RSRZ outliers are listed below:

Mol	Chain	Res	Type	RSRZ
1	D	22	ALA	6.0
1	A	155	ILE	5.2
1	C	283	LEU	5.1
1	C	279	ALA	4.7
1	D	345	PRO	4.7
1	D	79	THR	4.6
1	B	282	ARG	4.3
1	C	329	ARG	4.3
1	B	331	SER	4.0
1	D	14	ALA	4.0
1	B	23	GLY	4.0
1	C	277	GLY	3.9
1	D	232	THR	3.8
1	A	347	SER	3.7
1	D	346	SER	3.7
1	C	278	PRO	3.6
1	D	160	ALA	3.5
1	B	274	LEU	3.4
1	D	259	ALA	3.4
1	B	330	GLY	3.3
1	A	305	SER	3.3

Continued on next page...

Continued from previous page...

Mol	Chain	Res	Type	RSRZ
1	B	77	GLY	3.3
1	A	332	VAL	3.3
1	A	345	PRO	3.1
1	B	288	LEU	3.1
1	D	166	ALA	3.0
1	B	275	GLY	2.9
1	D	174	GLN	2.9
1	C	332	VAL	2.9
1	A	22	ALA	2.8
1	C	330	GLY	2.8
1	D	155	ILE	2.7
1	A	270	GLY	2.6
1	C	86	GLY	2.6
1	A	271	THR	2.6
1	B	332	VAL	2.6
1	C	280	ILE	2.5
1	D	270	GLY	2.5
1	C	286	ASP	2.5
1	A	290	SER	2.5
1	D	200	ALA	2.5
1	D	73	VAL	2.4
1	D	284	ALA	2.4
1	D	271	THR	2.4
1	D	305	SER	2.4
1	A	287	ASP	2.4
1	D	321	ILE	2.4
1	B	15	SER	2.3
1	C	284	ALA	2.3
1	D	101	LEU	2.3
1	C	331	SER	2.3
1	B	329	ARG	2.2
1	A	326	VAL	2.2
1	D	15	SER	2.2
1	C	345	PRO	2.2
1	D	154	GLY	2.1
1	A	450	GLN	2.1
1	A	269	ALA	2.1
1	B	24	VAL	2.1
1	C	101	LEU	2.0
1	A	232	THR	2.0
1	A	250	SER	2.0
1	D	326	VAL	2.0

Continued on next page...

Continued from previous page...

Mol	Chain	Res	Type	RSRZ
1	D	21	PRO	2.0

6.2 Non-standard residues in protein, DNA, RNA chains ⓘ

There are no non-standard protein/DNA/RNA residues in this entry.

6.3 Carbohydrates ⓘ

There are no carbohydrates in this entry.

6.4 Ligands ⓘ

In the following table, the Atoms column lists the number of modelled atoms in the group and the number defined in the chemical component dictionary. LLDF column lists the quality of electron density of the group with respect to its neighbouring residues in protein, DNA or RNA chains. The B-factors column lists the minimum, median, 95th percentile and maximum values of B factors of atoms in the group. The column labelled 'Q< 0.9' lists the number of atoms with occupancy less than 0.9.

Mol	Type	Chain	Res	Atoms	RSR	LLDF	B-factors(Å ²)	Q<0.9
3	VCE	C	1451[B]	19/19	0.13	0.67	29,36,45,46	19
2	RVC	C	451[A]	19/19	0.12	0.28	29,36,45,46	19
2	RVC	D	451	19/19	0.14	0.05	32,44,62,63	0
2	RVC	A	451	19/19	0.14	-0.00	24,27,31,34	0
2	RVC	B	451	19/19	0.08	-1.12	22,31,44,48	0

6.5 Other polymers ⓘ

There are no such residues in this entry.