



Full wwPDB X-ray Structure Validation Report

Feb 28, 2014 – 01:20 AM GMT

PDB ID : 1RXO
Title : ACTIVATED SPINACH RUBISCO IN COMPLEX WITH ITS SUBSTRATE
RIBULOSE-1,5-BISPHOSPHATE AND CALCIUM
Authors : Taylor, T.C.; Andersson, I.
Deposited on : 1996-12-06
Resolution : 2.20 Å (reported)

This is a full wwPDB validation report for a publicly released PDB entry.
We welcome your comments at validation@mail.wwpdb.org
A user guide is available at <http://wwpdb.org/ValidationPDFNotes.html>

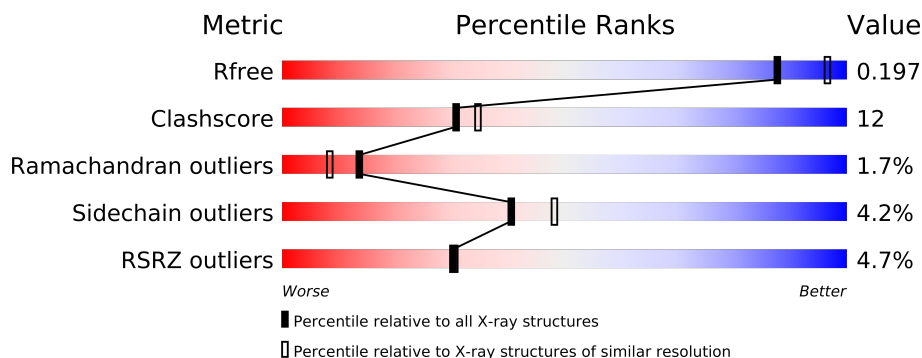
The following versions of software and data (see [references](#)) were used in the production of this report:

MolProbity : 4.02b-467
Mogul : 1.15 2013
Xtriage (Phenix) : dev-1323
EDS : stable22639
Percentile statistics : 21963
Refmac : 5.8.0049
CCP4 : 6.3.0 (Settle)
Ideal geometry (proteins) : Engh & Huber (2001)
Ideal geometry (DNA, RNA) : Parkinson et. al. (1996)
Validation Pipeline (wwPDB-VP) : stable22683

1 Overall quality at a glance

The reported resolution of this entry is 2.20 Å.

Percentile scores (ranging between 0-100) for global validation metrics of the entry are shown in the following graphic. The table shows the number of entries on which the scores are based.



Metric	Whole archive (#Entries)	Similar resolution (#Entries, resolution range(Å))
R_{free}	66092	2938 (2.20-2.20)
Clashscore	79885	3751 (2.20-2.20)
Ramachandran outliers	78287	3681 (2.20-2.20)
Sidechain outliers	78261	3682 (2.20-2.20)
RSRZ outliers	66119	2939 (2.20-2.20)

The table below summarises the geometric issues observed across the polymeric chains and their fit to the electron density. The red, orange, yellow and green segments on the lower bar indicate the fraction of residues that contain outliers for ≥ 3 , 2, 1 and 0 types of geometric quality criteria. The upper red bar (where present) indicates the fraction of residues that have poor fit to the electron density.

Mol	Chain	Length	Quality of chain
1	B	475	
1	E	475	
1	H	475	
1	L	475	
2	C	123	
2	F	123	
2	I	123	
2	S	123	

The following table lists non-polymeric compounds that are outliers for geometric or electron-density-fit criteria:

Mol	Type	Chain	Res	Geometry	Electron density
4	CA	B	477	-	X

2 Entry composition

There are 5 unique types of molecules in this entry. The entry contains 19440 atoms, of which 0 are hydrogen and 0 are deuterium.

In the tables below, the ZeroOcc column contains the number of atoms modelled with zero occupancy, the AltConf column contains the number of residues with at least one atom in alternate conformation and the Trace column contains the number of residues modelled with at most 2 atoms.

- Molecule 1 is a protein called RIBULOSE BISPHOSPHATE CARBOXYLASE/OXYGEN ASE.

Mol	Chain	Residues	Atoms					ZeroOcc	AltConf	Trace
1	L	455	Total	C	N	O	S	0	0	0
			3552	2250	627	658	17			
1	B	455	Total	C	N	O	S	0	0	0
			3552	2250	627	658	17			
1	E	455	Total	C	N	O	S	0	0	0
			3552	2250	627	658	17			
1	H	455	Total	C	N	O	S	0	0	0
			3552	2250	627	658	17			

There are 4 discrepancies between the modelled and reference sequences:

Chain	Residue	Modelled	Actual	Comment	Reference
L	201	KCX	LYS	MODIFIED RESIDUE	UNP P00875
B	201	KCX	LYS	MODIFIED RESIDUE	UNP P00875
E	201	KCX	LYS	MODIFIED RESIDUE	UNP P00875
H	201	KCX	LYS	MODIFIED RESIDUE	UNP P00875

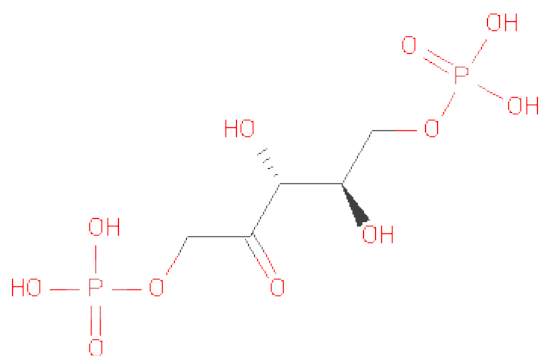
- Molecule 2 is a protein called RIBULOSE BISPHOSPHATE CARBOXYLASE/OXYGEN ASE.

Mol	Chain	Residues	Atoms					ZeroOcc	AltConf	Trace
2	S	123	Total	C	N	O	S	0	0	0
			1033	673	167	186	7			
2	C	123	Total	C	N	O	S	0	0	0
			1033	673	167	186	7			
2	F	123	Total	C	N	O	S	0	0	0
			1033	673	167	186	7			
2	I	123	Total	C	N	O	S	0	0	0
			1033	673	167	186	7			

There are 28 discrepancies between the modelled and reference sequences:

Chain	Residue	Modelled	Actual	Comment	Reference
S	2	GLN	LYS	CONFLICT	UNP P00870
S	6	ILE	THR	CONFLICT	UNP P00870
S	7	LEU	GLN	CONFLICT	UNP P00870
S	9	LEU	MET	CONFLICT	UNP P00870
S	11	LYS	ARG	CONFLICT	UNP P00870
S	109	GLU	GLN	CONFLICT	UNP P00870
S	113	ILE	VAL	CONFLICT	UNP P00870
C	2	GLN	LYS	CONFLICT	UNP P00870
C	6	ILE	THR	CONFLICT	UNP P00870
C	7	LEU	GLN	CONFLICT	UNP P00870
C	9	LEU	MET	CONFLICT	UNP P00870
C	11	LYS	ARG	CONFLICT	UNP P00870
C	109	GLU	GLN	CONFLICT	UNP P00870
C	113	ILE	VAL	CONFLICT	UNP P00870
F	2	GLN	LYS	CONFLICT	UNP P00870
F	6	ILE	THR	CONFLICT	UNP P00870
F	7	LEU	GLN	CONFLICT	UNP P00870
F	9	LEU	MET	CONFLICT	UNP P00870
F	11	LYS	ARG	CONFLICT	UNP P00870
F	109	GLU	GLN	CONFLICT	UNP P00870
F	113	ILE	VAL	CONFLICT	UNP P00870
I	2	GLN	LYS	CONFLICT	UNP P00870
I	6	ILE	THR	CONFLICT	UNP P00870
I	7	LEU	GLN	CONFLICT	UNP P00870
I	9	LEU	MET	CONFLICT	UNP P00870
I	11	LYS	ARG	CONFLICT	UNP P00870
I	109	GLU	GLN	CONFLICT	UNP P00870
I	113	ILE	VAL	CONFLICT	UNP P00870

- Molecule 3 is SUGAR (RIBULOSE-1,5-DIPHOSPHATE) (three-letter code: RUB) (formula: $C_5H_{12}O_{11}P_2$).



Mol	Chain	Residues	Atoms				ZeroOcc	AltConf
3	L	1	Total	C	O	P	0	0
			18	5	11	2		
3	B	1	Total	C	O	P	0	0
			18	5	11	2		
3	E	1	Total	C	O	P	0	0
			18	5	11	2		
3	H	1	Total	C	O	P	0	0
			18	5	11	2		

- Molecule 4 is CALCIUM ION (three-letter code: CA) (formula: Ca).

Mol	Chain	Residues	Atoms		ZeroOcc	AltConf
4	H	1	Total	Ca	0	0
			1	1		
4	B	1	Total	Ca	0	0
			1	1		
4	L	1	Total	Ca	0	0
			1	1		
4	E	1	Total	Ca	0	0
			1	1		

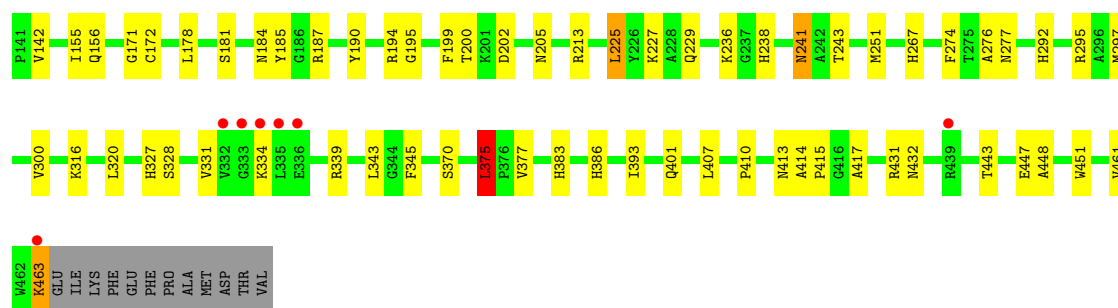
- Molecule 5 is water.

Mol	Chain	Residues	Atoms		ZeroOcc	AltConf
5	B	209	Total	O	0	0
			209	209		

Continued on next page...

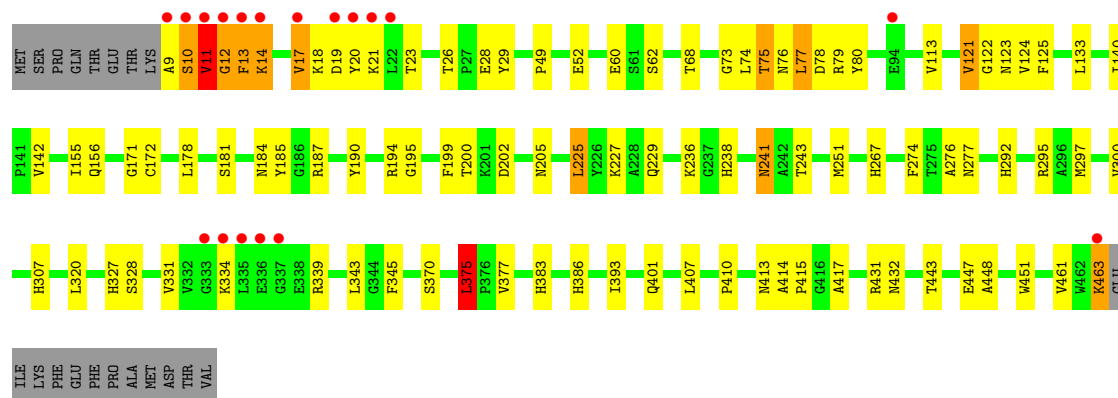
Continued from previous page...

Mol	Chain	Residues	Atoms		ZeroOcc	AltConf
5	C	48	Total 48	O 48	0	0
5	E	208	Total 208	O 208	0	0
5	F	48	Total 48	O 48	0	0
5	H	208	Total 208	O 208	0	0
5	I	48	Total 48	O 48	0	0
5	L	207	Total 207	O 207	0	0
5	S	48	Total 48	O 48	0	0



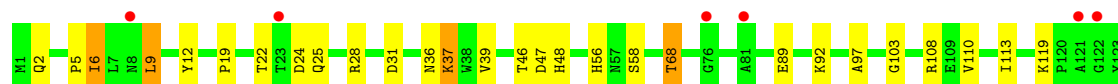
• Molecule 1: RIBULOSE BISPHOSPHATE CARBOXYLASE/OXYGENASE

Chain H:



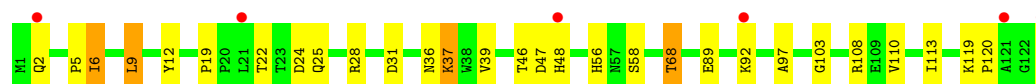
• Molecule 2: RIBULOSE BISPHOSPHATE CARBOXYLASE/OXYGENASE

Chain S:



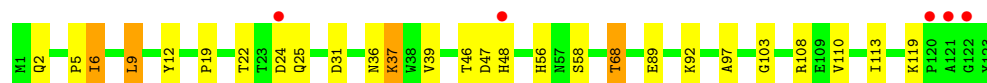
• Molecule 2: RIBULOSE BISPHOSPHATE CARBOXYLASE/OXYGENASE

Chain C:



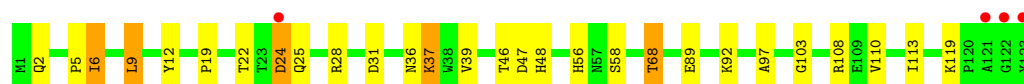
• Molecule 2: RIBULOSE BISPHOSPHATE CARBOXYLASE/OXYGENASE

Chain F:



• Molecule 2: RIBULOSE BISPHOSPHATE CARBOXYLASE/OXYGENASE

Chain I:



4 Data and refinement statistics

Property	Value	Source
Space group	C 2 2 21	Depositor
Cell constants a, b, c, α , β , γ	157.60Å 158.50Å 202.60Å 90.00° 90.00° 90.00°	Depositor
Resolution (Å)	7.00 – 2.20 19.87 – 2.20	Depositor EDS
% Data completeness (in resolution range)	88.0 (7.00-2.20) 87.9 (19.87-2.20)	Depositor EDS
R_{merge}	0.14	Depositor
R_{sym}	(Not available)	Depositor
$\langle I/\sigma(I) \rangle$ ¹	11.14 (at 2.19Å)	Xtriage
Refinement program	X-PLOR 3.1	Depositor
R, R_{free}	0.205 , 0.229 0.197 , 0.197	Depositor DCC
R_{free} test set	5494 reflections (5.04%)	DCC
Wilson B-factor (Å ²)	17.7	Xtriage
Anisotropy	0.144	Xtriage
Bulk solvent k_{sol} (e/Å ³), B_{sol} (Å ²)	0.37 , 55.3	EDS
Estimated twinning fraction	0.000 for -k,-h,-l	Xtriage
L-test for twinning	$\langle L \rangle = 0.49$, $\langle L^2 \rangle = 0.32$	Xtriage
Outliers	1 of 112360 reflections (0.001%)	Xtriage
F_o, F_c correlation	0.95	EDS
Total number of atoms	19440	wwPDB-VP
Average B, all atoms (Å ²)	20.0	wwPDB-VP

Xtriage's analysis on translational NCS is as follows: *The analyses of the Patterson function reveals a significant off-origin peak that is 47.82 % of the origin peak, indicating pseudo translational symmetry. The chance of finding a peak of this or larger height randomly in a structure without pseudo translational symmetry is equal to 9.3901e-05. The detected translational NCS is most likely also responsible for the elevated intensity ratio.*

¹Intensities estimated from amplitudes.

5 Model quality

5.1 Standard geometry

Bond lengths and bond angles in the following residue types are not validated in this section: RUB, CA, KCX

The Z score for a bond length (or angle) is the number of standard deviations the observed value is removed from the expected value. A bond length (or angle) with $|Z| > 5$ is considered an outlier worth inspection. RMSZ is the root-mean-square of all Z scores of the bond lengths (or angles).

Mol	Chain	Bond lengths		Bond angles	
		RMSZ	# $ Z > 5$	RMSZ	# $ Z > 5$
1	B	0.56	0/3626	0.79	3/4919 (0.1%)
1	E	0.56	0/3626	0.79	3/4919 (0.1%)
1	H	0.56	0/3626	0.79	3/4919 (0.1%)
1	L	0.56	0/3626	0.79	3/4919 (0.1%)
2	C	0.55	0/1068	0.74	0/1453
2	F	0.55	0/1068	0.74	0/1453
2	I	0.55	0/1068	0.74	0/1453
2	S	0.55	0/1068	0.74	0/1453
All	All	0.56	0/18776	0.78	12/25488 (0.0%)

There are no bond length outliers.

All (12) bond angle outliers are listed below:

Mol	Chain	Res	Type	Atoms	Z	Observed(°)	Ideal(°)
1	H	12	GLY	N-CA-C	-10.09	87.88	113.10
1	L	12	GLY	N-CA-C	-10.08	87.91	113.10
1	B	12	GLY	N-CA-C	-10.08	87.91	113.10
1	E	12	GLY	N-CA-C	-10.07	87.92	113.10
1	B	225	LEU	CA-CB-CG	5.32	127.53	115.30
1	E	225	LEU	CA-CB-CG	5.30	127.49	115.30
1	L	225	LEU	CA-CB-CG	5.30	127.48	115.30
1	H	225	LEU	CA-CB-CG	5.29	127.48	115.30
1	L	375	LEU	CA-CB-CG	5.25	127.37	115.30
1	B	375	LEU	CA-CB-CG	5.24	127.36	115.30
1	H	375	LEU	CA-CB-CG	5.24	127.36	115.30
1	E	375	LEU	CA-CB-CG	5.23	127.33	115.30

There are no chirality outliers.

There are no planarity outliers.

5.2 Close contacts ⓘ

In the following table, the Non-H and H(model) columns list the number of non-hydrogen atoms and hydrogen atoms in the chain respectively. The H(added) column lists the number of hydrogens added by MolProbity. The Clashes column lists the number of clashes within the asymmetric unit, and the number in parentheses is this value normalized per 1000 atoms of the molecule in the chain. The Symm-Clashes column gives symmetry related clashes, in the same way as for the Clashes column.

Mol	Chain	Non-H	H(model)	H(added)	Clashes	Symm-Clashes
1	B	3552	0	3467	93	0
1	E	3552	0	3467	92	0
1	H	3552	0	3467	89	0
1	L	3552	0	3467	91	0
2	C	1033	0	990	21	0
2	F	1033	0	990	21	0
2	I	1033	0	990	24	5
2	S	1033	0	990	22	0
3	B	18	0	7	0	0
3	E	18	0	7	0	0
3	H	18	0	7	0	0
3	L	18	0	7	0	0
4	B	1	0	0	0	0
4	E	1	0	0	0	0
4	H	1	0	0	0	0
4	L	1	0	0	0	0
5	B	209	0	0	23	1
5	C	48	0	0	2	0
5	E	208	0	0	22	0
5	F	48	0	0	2	0
5	H	208	0	0	22	0
5	I	48	0	0	2	2
5	L	207	0	0	23	0
5	S	48	0	0	2	0
All	All	19440	0	17856	427	6

Clashscore is defined as the number of clashes calculated for the entry per 1000 atoms (including hydrogens) of the entry. The overall clashscore for this entry is 12.

All (427) close contacts within the same asymmetric unit are listed below.

Atom-1	Atom-2	Distance(Å)	Clash(Å)
1:H:156:GLN:HG3	2:I:110:VAL:HG11	1.38	1.04
1:E:156:GLN:HG3	2:F:110:VAL:HG11	1.38	1.04
1:B:156:GLN:HG3	2:C:110:VAL:HG11	1.38	1.03

Continued on next page...

Continued from previous page...

Atom-1	Atom-2	Distance(Å)	Clash(Å)
1:L:156:GLN:HG3	2:S:110:VAL:HG11	1.38	1.02
1:B:267:HIS:HD2	1:B:277:ASN:HD22	1.08	0.98
1:L:267:HIS:HD2	1:L:277:ASN:HD22	1.08	0.98
1:H:267:HIS:HD2	1:H:277:ASN:HD22	1.08	0.96
1:E:267:HIS:HD2	1:E:277:ASN:HD22	1.08	0.92
1:H:9:ALA:HB2	1:H:77:LEU:H	1.41	0.86
1:B:370:SER:HB2	5:B:503:HOH:O	1.76	0.86
1:E:9:ALA:HB2	1:E:77:LEU:H	1.41	0.85
1:E:370:SER:HB2	5:E:542:HOH:O	1.76	0.85
1:L:9:ALA:HB2	1:L:77:LEU:H	1.41	0.85
1:L:370:SER:HB2	5:L:502:HOH:O	1.76	0.84
1:H:370:SER:HB2	5:H:505:HOH:O	1.76	0.84
1:B:9:ALA:HB2	1:B:77:LEU:H	1.41	0.84
1:B:274:PHE:HD2	5:B:571:HOH:O	1.62	0.81
1:E:274:PHE:HD2	5:E:615:HOH:O	1.62	0.81
1:H:274:PHE:HD2	5:H:573:HOH:O	1.63	0.80
1:L:274:PHE:HD2	5:L:570:HOH:O	1.62	0.80
1:L:156:GLN:HG3	2:S:110:VAL:CG1	2.12	0.79
2:I:22:THR:H	2:I:25:GLN:HE21	1.30	0.79
1:E:10:SER:HA	1:E:73:GLY:HA2	1.64	0.79
2:C:22:THR:H	2:C:25:GLN:HE21	1.30	0.79
2:S:22:THR:H	2:S:25:GLN:HE21	1.30	0.79
1:H:10:SER:HA	1:H:73:GLY:HA2	1.64	0.79
1:L:10:SER:HA	1:L:73:GLY:HA2	1.64	0.79
1:E:156:GLN:HG3	2:F:110:VAL:CG1	2.12	0.79
1:H:156:GLN:HG3	2:I:110:VAL:CG1	2.12	0.78
2:F:22:THR:H	2:F:25:GLN:HE21	1.30	0.78
1:B:10:SER:HA	1:B:73:GLY:HA2	1.64	0.78
1:L:80:TYR:HB3	5:L:675:HOH:O	1.83	0.78
1:B:156:GLN:HG3	2:C:110:VAL:CG1	2.12	0.77
1:H:383:HIS:H	1:H:386:HIS:HD2	1.31	0.77
1:E:383:HIS:H	1:E:386:HIS:HD2	1.31	0.77
1:B:80:TYR:HB3	5:B:676:HOH:O	1.83	0.77
1:E:80:TYR:HB3	5:E:724:HOH:O	1.83	0.76
1:H:80:TYR:HB3	5:H:678:HOH:O	1.83	0.76
1:L:383:HIS:H	1:L:386:HIS:HD2	1.31	0.75
1:B:383:HIS:H	1:B:386:HIS:HD2	1.31	0.75
1:B:123:ASN:HA	5:B:678:HOH:O	1.87	0.74
1:L:123:ASN:HA	5:L:677:HOH:O	1.87	0.74
2:I:89:GLU:HA	2:I:92:LYS:HE3	1.70	0.74
1:E:123:ASN:HA	5:E:726:HOH:O	1.87	0.73
1:L:121:VAL:HG22	1:L:125:PHE:CE1	2.24	0.73

Continued on next page...

Continued from previous page...

Atom-1	Atom-2	Distance(Å)	Clash(Å)
1:H:121:VAL:HG22	1:H:125:PHE:CE1	2.24	0.73
2:S:89:GLU:HA	2:S:92:LYS:HE3	1.70	0.72
1:H:123:ASN:HA	5:H:680:HOH:O	1.87	0.72
1:E:121:VAL:HG22	1:E:125:PHE:CE1	2.24	0.72
2:C:89:GLU:HA	2:C:92:LYS:HE3	1.70	0.72
1:B:121:VAL:HG22	1:B:125:PHE:CE1	2.24	0.72
2:F:89:GLU:HA	2:F:92:LYS:HE3	1.70	0.71
1:B:463:LYS:NZ	1:B:463:LYS:H	1.90	0.70
1:E:463:LYS:NZ	1:E:463:LYS:H	1.90	0.70
1:H:463:LYS:NZ	1:H:463:LYS:H	1.90	0.69
1:L:463:LYS:NZ	1:L:463:LYS:H	1.90	0.69
1:E:431:ARG:HH21	1:E:432:ASN:HD21	1.41	0.68
1:H:431:ARG:HH21	1:H:432:ASN:HD21	1.41	0.68
1:B:431:ARG:HH21	1:B:432:ASN:HD21	1.41	0.67
2:C:46:THR:HG22	2:C:97:ALA:HB2	1.77	0.67
2:S:46:THR:HG22	2:S:97:ALA:HB2	1.77	0.66
1:L:431:ARG:HH21	1:L:432:ASN:HD21	1.41	0.66
1:H:9:ALA:HB2	1:H:77:LEU:N	2.10	0.66
2:F:46:THR:HG22	2:F:97:ALA:HB2	1.77	0.66
2:I:46:THR:HG22	2:I:97:ALA:HB2	1.77	0.66
1:E:68:THR:N	5:E:725:HOH:O	2.29	0.66
1:B:300:VAL:N	5:B:670:HOH:O	2.29	0.66
1:L:13:PHE:HE1	1:L:68:THR:HG22	1.61	0.65
1:H:13:PHE:HE1	1:H:68:THR:HG22	1.61	0.65
1:B:68:THR:N	5:B:677:HOH:O	2.29	0.65
1:E:13:PHE:HE1	1:E:68:THR:HG22	1.61	0.65
1:L:68:THR:N	5:L:676:HOH:O	2.29	0.64
1:H:68:THR:N	5:H:679:HOH:O	2.29	0.64
1:E:300:VAL:N	5:E:718:HOH:O	2.29	0.64
1:B:13:PHE:HE1	1:B:68:THR:HG22	1.61	0.64
1:H:300:VAL:N	5:H:672:HOH:O	2.29	0.64
1:L:267:HIS:CD2	1:L:277:ASN:HD22	2.01	0.64
1:L:9:ALA:HB2	1:L:77:LEU:N	2.10	0.64
1:L:300:VAL:N	5:L:669:HOH:O	2.29	0.64
1:E:9:ALA:HB2	1:E:77:LEU:N	2.10	0.64
1:B:267:HIS:CD2	1:B:277:ASN:HD22	2.01	0.63
1:H:181:SER:N	5:H:556:HOH:O	2.32	0.63
1:H:267:HIS:CD2	1:H:277:ASN:HD22	2.01	0.63
1:B:9:ALA:HB2	1:B:77:LEU:N	2.10	0.63
1:E:79:ARG:HH11	1:E:79:ARG:HG2	1.64	0.63
1:L:79:ARG:HG2	1:L:79:ARG:HH11	1.64	0.63
1:B:26:THR:HG22	1:B:29:TYR:HB2	1.81	0.63

Continued on next page...

Continued from previous page...

Atom-1	Atom-2	Distance(Å)	Clash(Å)
1:B:79:ARG:HH11	1:B:79:ARG:HG2	1.64	0.63
1:H:331:VAL:O	1:H:334:LYS:HG2	1.99	0.63
1:L:181:SER:N	5:L:553:HOH:O	2.32	0.62
1:B:331:VAL:O	1:B:334:LYS:HG2	1.99	0.62
1:H:79:ARG:HH11	1:H:79:ARG:HG2	1.64	0.62
1:E:26:THR:HG22	1:E:29:TYR:HB2	1.81	0.62
1:B:181:SER:N	5:B:554:HOH:O	2.32	0.62
1:H:10:SER:CA	1:H:73:GLY:HA2	2.29	0.62
1:E:331:VAL:O	1:E:334:LYS:HG2	1.99	0.62
1:L:10:SER:CA	1:L:73:GLY:HA2	2.29	0.62
1:H:26:THR:HG22	1:H:29:TYR:HB2	1.81	0.61
1:E:267:HIS:CD2	1:E:277:ASN:HD22	2.01	0.61
1:E:181:SER:N	5:E:597:HOH:O	2.32	0.61
1:H:463:LYS:H	1:H:463:LYS:HZ2	1.48	0.61
1:B:10:SER:CA	1:B:73:GLY:HA2	2.29	0.61
1:L:331:VAL:O	1:L:334:LYS:HG2	1.99	0.61
1:L:26:THR:HG22	1:L:29:TYR:HB2	1.81	0.61
1:E:10:SER:CA	1:E:73:GLY:HA2	2.29	0.60
1:L:407:LEU:HD23	1:L:413:ASN:OD1	2.02	0.60
1:B:407:LEU:HD23	1:B:413:ASN:OD1	2.02	0.60
1:B:267:HIS:CE1	5:B:674:HOH:O	2.56	0.59
1:E:407:LEU:HD23	1:E:413:ASN:OD1	2.02	0.59
1:B:463:LYS:HZ2	1:B:463:LYS:H	1.50	0.59
1:L:267:HIS:CE1	5:L:673:HOH:O	2.56	0.59
1:H:407:LEU:HD23	1:H:413:ASN:OD1	2.02	0.59
1:E:267:HIS:CE1	5:E:722:HOH:O	2.56	0.58
1:L:463:LYS:HZ2	1:L:463:LYS:H	1.51	0.58
1:H:26:THR:CG2	1:H:29:TYR:HB2	2.33	0.58
1:L:26:THR:CG2	1:L:29:TYR:HB2	2.33	0.58
1:E:26:THR:CG2	1:E:29:TYR:HB2	2.33	0.58
1:H:267:HIS:CE1	5:H:676:HOH:O	2.56	0.58
1:L:410:PRO:HD3	1:L:461:VAL:HG21	1.87	0.57
1:H:410:PRO:HD3	1:H:461:VAL:HG21	1.87	0.57
1:B:410:PRO:HD3	1:B:461:VAL:HG21	1.87	0.57
2:S:39:VAL:HG23	5:S:155:HOH:O	2.05	0.57
1:E:156:GLN:NE2	1:H:181:SER:HB2	2.20	0.57
1:B:26:THR:CG2	1:B:29:TYR:HB2	2.33	0.57
1:H:178:LEU:HD12	5:H:583:HOH:O	2.05	0.57
1:E:410:PRO:HD3	1:E:461:VAL:HG21	1.87	0.57
1:B:200:THR:OG1	1:B:238:HIS:HD2	1.88	0.57
1:E:200:THR:OG1	1:E:238:HIS:HD2	1.88	0.57
1:H:200:THR:OG1	1:H:238:HIS:HD2	1.88	0.57

Continued on next page...

Continued from previous page...

Atom-1	Atom-2	Distance(Å)	Clash(Å)
1:L:156:GLN:NE2	1:B:181:SER:HB2	2.21	0.56
1:E:414:ALA:HB3	1:E:415:PRO:HD3	1.86	0.56
2:I:37:LYS:N	2:I:37:LYS:HD2	2.20	0.56
1:B:414:ALA:HB3	1:B:415:PRO:HD3	1.86	0.56
1:L:178:LEU:HD12	5:L:580:HOH:O	2.05	0.56
2:I:39:VAL:HG23	5:I:160:HOH:O	2.05	0.56
1:H:414:ALA:HB3	1:H:415:PRO:HD3	1.86	0.56
2:F:39:VAL:HG23	5:F:757:HOH:O	2.05	0.56
2:S:37:LYS:N	2:S:37:LYS:HD2	2.20	0.56
2:C:39:VAL:HG23	5:C:501:HOH:O	2.05	0.56
1:E:229:GLN:HE21	1:E:236:LYS:H	1.54	0.56
1:E:178:LEU:HD12	5:E:625:HOH:O	2.05	0.56
1:H:229:GLN:HE21	1:H:236:LYS:H	1.54	0.56
2:F:37:LYS:N	2:F:37:LYS:HD2	2.20	0.56
2:C:37:LYS:HD2	2:C:37:LYS:N	2.20	0.55
1:L:414:ALA:HB3	1:L:415:PRO:HD3	1.86	0.55
1:L:229:GLN:HE21	1:L:236:LYS:H	1.54	0.55
1:L:200:THR:OG1	1:L:238:HIS:HD2	1.88	0.55
1:B:229:GLN:HE21	1:B:236:LYS:H	1.54	0.55
1:H:276:ALA:HB3	5:H:676:HOH:O	2.07	0.55
1:H:155:ILE:HG12	1:H:375:LEU:HD13	1.89	0.55
1:B:184:ASN:ND2	5:B:600:HOH:O	2.40	0.55
1:E:155:ILE:HG12	1:E:375:LEU:HD13	1.89	0.55
1:B:276:ALA:HB3	5:B:674:HOH:O	2.07	0.55
1:E:276:ALA:HB3	5:E:722:HOH:O	2.07	0.55
1:B:155:ILE:HG12	1:B:375:LEU:HD13	1.89	0.55
1:L:276:ALA:HB3	5:L:673:HOH:O	2.07	0.54
1:L:155:ILE:HG12	1:L:375:LEU:HD13	1.89	0.54
1:H:184:ASN:ND2	5:H:602:HOH:O	2.40	0.54
1:L:171:GLY:HA3	1:L:401:GLN:HE21	1.73	0.54
1:L:184:ASN:ND2	5:L:599:HOH:O	2.40	0.54
1:B:178:LEU:HD12	5:B:581:HOH:O	2.05	0.54
1:B:123:ASN:HB3	5:B:518:HOH:O	2.08	0.54
1:H:171:GLY:HA3	1:H:401:GLN:HE21	1.73	0.54
1:E:123:ASN:HB3	5:E:558:HOH:O	2.08	0.54
1:E:184:ASN:ND2	5:E:644:HOH:O	2.40	0.53
1:B:171:GLY:HA3	1:B:401:GLN:HE21	1.73	0.53
1:L:181:SER:HB2	1:H:156:GLN:NE2	2.23	0.53
1:L:123:ASN:HB3	5:L:517:HOH:O	2.08	0.52
1:H:123:ASN:HB3	5:H:520:HOH:O	2.08	0.52
1:E:171:GLY:HA3	1:E:401:GLN:HE21	1.73	0.52
2:F:56:HIS:CE1	2:F:58:SER:HG	2.28	0.52

Continued on next page...

Continued from previous page...

Atom-1	Atom-2	Distance(Å)	Clash(Å)
1:L:202:ASP:OD1	1:L:238:HIS:HE1	1.93	0.52
1:E:9:ALA:CB	1:E:77:LEU:H	2.19	0.52
1:B:202:ASP:OD1	1:B:238:HIS:HE1	1.93	0.52
2:F:103:GLY:N	2:F:113:ILE:HG13	2.25	0.52
1:H:17:VAL:HG13	1:H:18:LYS:H	1.76	0.51
1:B:17:VAL:HG13	1:B:18:LYS:H	1.76	0.51
1:E:463:LYS:HZ2	1:E:463:LYS:H	1.55	0.51
1:E:202:ASP:OD1	1:E:238:HIS:HE1	1.93	0.51
1:E:17:VAL:HG13	1:E:18:LYS:H	1.76	0.51
1:L:17:VAL:HG13	1:L:18:LYS:H	1.76	0.51
2:I:103:GLY:N	2:I:113:ILE:HG13	2.25	0.51
1:B:331:VAL:HG11	1:B:339:ARG:HG3	1.93	0.51
1:E:205:ASN:ND2	5:E:590:HOH:O	2.44	0.51
2:C:103:GLY:N	2:C:113:ILE:HG13	2.25	0.51
1:H:202:ASP:OD1	1:H:238:HIS:HE1	1.93	0.51
1:L:331:VAL:HG11	1:L:339:ARG:HG3	1.93	0.50
2:S:103:GLY:N	2:S:113:ILE:HG13	2.25	0.50
1:H:113:VAL:N	5:H:492:HOH:O	2.40	0.50
1:L:205:ASN:ND2	5:L:546:HOH:O	2.44	0.50
1:H:331:VAL:HG11	1:H:339:ARG:HG3	1.93	0.50
1:H:274:PHE:CD2	5:H:573:HOH:O	2.50	0.50
1:H:331:VAL:HG21	1:H:393:ILE:HG21	1.94	0.50
1:H:205:ASN:ND2	5:H:549:HOH:O	2.44	0.50
1:E:331:VAL:HG11	1:E:339:ARG:HG3	1.93	0.49
1:E:113:VAL:N	5:E:527:HOH:O	2.40	0.49
1:L:113:VAL:N	5:L:489:HOH:O	2.40	0.49
1:B:156:GLN:NE2	1:E:181:SER:HB2	2.27	0.49
1:B:205:ASN:ND2	5:B:547:HOH:O	2.44	0.49
1:H:194:ARG:NH1	2:I:6:ILE:HD12	2.27	0.49
1:B:9:ALA:CB	1:B:77:LEU:H	2.19	0.49
1:B:195:GLY:HA3	1:B:417:ALA:HB3	1.94	0.49
1:L:9:ALA:CB	1:L:77:LEU:H	2.20	0.49
1:B:113:VAL:N	5:B:490:HOH:O	2.40	0.49
2:S:108:ARG:O	2:S:110:VAL:HG13	2.12	0.49
1:L:331:VAL:HG21	1:L:393:ILE:HG21	1.94	0.49
1:H:443:THR:O	1:H:447:GLU:HG3	2.13	0.49
1:E:194:ARG:NH1	2:F:6:ILE:HD12	2.27	0.49
1:E:463:LYS:HZ3	1:E:463:LYS:H	1.61	0.49
1:H:9:ALA:CB	1:H:77:LEU:H	2.19	0.49
1:L:194:ARG:NH1	2:S:6:ILE:HD12	2.27	0.49
2:C:108:ARG:O	2:C:110:VAL:HG13	2.12	0.48
1:E:331:VAL:HG21	1:E:393:ILE:HG21	1.94	0.48

Continued on next page...

Continued from previous page...

Atom-1	Atom-2	Distance(Å)	Clash(Å)
1:L:195:GLY:HA3	1:L:417:ALA:HB3	1.94	0.48
1:B:194:ARG:NH1	2:C:6:ILE:HD12	2.27	0.48
2:I:56:HIS:CE1	2:I:58:SER:HG	2.31	0.48
1:E:195:GLY:HA3	1:E:417:ALA:HB3	1.94	0.48
2:F:108:ARG:O	2:F:110:VAL:HG13	2.12	0.48
1:B:331:VAL:HG21	1:B:393:ILE:HG21	1.94	0.48
1:B:75:THR:HG22	1:B:76:ASN:H	1.79	0.48
1:L:443:THR:O	1:L:447:GLU:HG3	2.13	0.48
2:I:108:ARG:O	2:I:110:VAL:HG13	2.12	0.48
1:E:75:THR:HG22	1:E:76:ASN:H	1.79	0.48
2:C:56:HIS:CE1	2:C:58:SER:HG	2.31	0.48
1:H:75:THR:HG22	1:H:76:ASN:H	1.79	0.48
1:E:443:THR:O	1:E:447:GLU:HG3	2.13	0.48
1:B:274:PHE:CD2	5:B:571:HOH:O	2.49	0.48
1:H:195:GLY:HA3	1:H:417:ALA:HB3	1.94	0.48
1:B:9:ALA:O	1:B:10:SER:O	2.32	0.48
1:L:75:THR:HG22	1:L:76:ASN:H	1.79	0.48
1:L:274:PHE:CD2	5:L:570:HOH:O	2.50	0.48
1:B:443:THR:O	1:B:447:GLU:HG3	2.13	0.48
1:L:297:MET:O	1:L:297:MET:HG2	2.15	0.47
1:E:9:ALA:O	1:E:10:SER:O	2.32	0.47
1:H:297:MET:O	1:H:297:MET:HG2	2.15	0.47
2:S:56:HIS:CE1	2:S:58:SER:HG	2.33	0.47
1:B:297:MET:O	1:B:297:MET:HG2	2.15	0.47
1:H:49:PRO:HG2	1:H:52:GLU:HB2	1.97	0.47
1:E:297:MET:O	1:E:297:MET:HG2	2.15	0.47
1:L:9:ALA:O	1:L:10:SER:O	2.32	0.47
1:L:49:PRO:HG2	1:L:52:GLU:HB2	1.97	0.47
1:E:49:PRO:HG2	1:E:52:GLU:HB2	1.97	0.47
1:H:26:THR:HG23	1:H:28:GLU:OE2	2.15	0.46
1:L:60:GLU:HB2	1:L:124:VAL:HG12	1.97	0.46
1:H:60:GLU:HB2	1:H:124:VAL:HG12	1.97	0.46
1:B:26:THR:HG23	1:B:28:GLU:OE2	2.15	0.46
1:E:26:THR:HG23	1:E:28:GLU:OE2	2.15	0.46
1:L:26:THR:HG23	1:L:28:GLU:OE2	2.15	0.46
1:E:74:LEU:HB3	5:E:716:HOH:O	2.15	0.46
1:B:74:LEU:HB3	5:B:668:HOH:O	2.15	0.46
1:E:267:HIS:HE1	5:E:722:HOH:O	1.97	0.46
1:L:431:ARG:HE	1:L:432:ASN:ND2	2.14	0.46
2:S:68:THR:HG21	2:C:6:ILE:HG12	1.98	0.46
1:H:74:LEU:HB3	5:H:670:HOH:O	2.15	0.46
1:H:9:ALA:O	1:H:10:SER:O	2.32	0.46

Continued on next page...

Continued from previous page...

Atom-1	Atom-2	Distance(Å)	Clash(Å)
1:H:431:ARG:HE	1:H:432:ASN:ND2	2.14	0.46
1:E:60:GLU:HB2	1:E:124:VAL:HG12	1.97	0.46
1:L:122:GLY:HA3	5:L:679:HOH:O	2.16	0.46
1:B:431:ARG:HE	1:B:432:ASN:ND2	2.14	0.45
1:L:74:LEU:HB3	5:L:667:HOH:O	2.15	0.45
1:B:60:GLU:HB2	1:B:124:VAL:HG12	1.97	0.45
1:H:156:GLN:HB2	5:H:486:HOH:O	2.16	0.45
1:E:122:GLY:HA3	5:E:728:HOH:O	2.16	0.45
1:B:49:PRO:HG2	1:B:52:GLU:HB2	1.97	0.45
1:B:251:MET:HE2	1:B:251:MET:HB3	1.85	0.45
1:H:122:GLY:HA3	5:H:682:HOH:O	2.16	0.45
1:H:13:PHE:CE1	1:H:68:THR:HG22	2.47	0.45
2:I:22:THR:OG1	2:I:25:GLN:HG3	2.16	0.45
1:L:156:GLN:HB2	5:L:483:HOH:O	2.16	0.45
1:H:331:VAL:HB	1:H:393:ILE:HD13	1.98	0.45
1:L:13:PHE:CE1	1:L:68:THR:HG22	2.48	0.45
2:S:22:THR:OG1	2:S:25:GLN:HG3	2.16	0.45
2:F:22:THR:OG1	2:F:25:GLN:HG3	2.16	0.45
1:E:431:ARG:HE	1:E:432:ASN:ND2	2.14	0.45
1:B:122:GLY:HA3	5:B:680:HOH:O	2.16	0.45
1:E:11:VAL:CG1	1:E:13:PHE:HA	2.47	0.45
1:E:13:PHE:CE1	1:E:68:THR:HG22	2.47	0.45
1:B:11:VAL:CG1	1:B:13:PHE:HA	2.47	0.45
1:L:463:LYS:HZ3	1:L:463:LYS:H	1.65	0.45
1:B:331:VAL:HB	1:B:393:ILE:HD13	1.99	0.45
1:E:343:LEU:HD21	1:E:393:ILE:HG23	1.99	0.45
1:E:156:GLN:HB2	5:E:521:HOH:O	2.16	0.44
1:L:11:VAL:HG12	1:L:13:PHE:HA	1.99	0.44
1:B:300:VAL:HG23	5:B:670:HOH:O	2.16	0.44
1:L:343:LEU:HD21	1:L:393:ILE:HG23	1.99	0.44
1:H:267:HIS:HE1	5:H:676:HOH:O	1.97	0.44
1:L:328:SER:HB2	1:L:345:PHE:HE1	1.83	0.44
2:C:22:THR:OG1	2:C:25:GLN:HG3	2.16	0.44
1:L:300:VAL:HG23	5:L:669:HOH:O	2.17	0.44
1:B:11:VAL:HG12	1:B:13:PHE:HA	1.99	0.44
1:E:331:VAL:HB	1:E:393:ILE:HD13	1.98	0.44
1:B:328:SER:HB2	1:B:345:PHE:HE1	1.83	0.44
1:E:10:SER:O	1:E:11:VAL:HG22	2.18	0.44
1:E:300:VAL:HG23	5:E:718:HOH:O	2.17	0.44
1:B:267:HIS:HE1	5:B:674:HOH:O	1.97	0.44
1:H:267:HIS:HD2	1:H:277:ASN:ND2	1.93	0.44
1:H:11:VAL:HG12	1:H:13:PHE:HA	1.99	0.44

Continued on next page...

Continued from previous page...

Atom-1	Atom-2	Distance(Å)	Clash(Å)
2:I:22:THR:N	2:I:25:GLN:HE21	2.08	0.44
1:H:300:VAL:HG23	5:H:672:HOH:O	2.17	0.44
1:H:343:LEU:HD21	1:H:393:ILE:HG23	1.99	0.44
2:S:36:ASN:O	2:S:37:LYS:HB2	2.18	0.44
1:B:156:GLN:HB2	5:B:484:HOH:O	2.16	0.44
1:H:10:SER:O	1:H:11:VAL:HG22	2.18	0.44
2:C:22:THR:N	2:C:25:GLN:HE21	2.08	0.44
1:B:343:LEU:HD21	1:B:393:ILE:HG23	1.99	0.44
1:E:328:SER:HB2	1:E:345:PHE:HE1	1.83	0.44
1:H:11:VAL:CG1	1:H:13:PHE:HA	2.47	0.44
1:L:331:VAL:HB	1:L:393:ILE:HD13	1.98	0.44
1:B:13:PHE:CE1	1:B:68:THR:HG22	2.47	0.43
2:F:36:ASN:O	2:F:37:LYS:HB2	2.18	0.43
1:H:328:SER:HB2	1:H:345:PHE:HE1	1.83	0.43
1:E:190:TYR:CZ	1:E:227:LYS:HE3	2.53	0.43
1:L:11:VAL:CG1	1:L:13:PHE:HA	2.47	0.43
1:B:10:SER:O	1:B:11:VAL:HG22	2.18	0.43
1:L:190:TYR:CZ	1:L:227:LYS:HE3	2.54	0.43
2:S:5:PRO:HB2	2:S:9:LEU:HG	2.00	0.43
1:E:251:MET:HB3	1:E:251:MET:HE2	1.87	0.43
2:F:68:THR:HG21	2:I:6:ILE:HD11	2.01	0.43
2:F:5:PRO:HB2	2:F:9:LEU:HG	2.00	0.43
1:B:339:ARG:NH2	1:B:393:ILE:HG12	2.34	0.43
1:L:339:ARG:NH2	1:L:393:ILE:HG12	2.34	0.43
2:I:68:THR:CG2	5:I:163:HOH:O	2.66	0.43
2:I:12:TYR:CE1	2:I:119:LYS:HD3	2.54	0.43
2:F:12:TYR:CE1	2:F:119:LYS:HD3	2.54	0.43
2:I:5:PRO:HB2	2:I:9:LEU:HG	2.00	0.43
1:E:267:HIS:HD2	1:E:277:ASN:ND2	1.93	0.43
1:L:10:SER:O	1:L:11:VAL:HG22	2.18	0.43
2:I:36:ASN:O	2:I:37:LYS:HB2	2.18	0.43
2:C:36:ASN:O	2:C:37:LYS:HB2	2.18	0.43
2:S:6:ILE:HD11	2:I:68:THR:HG21	2.00	0.43
2:S:68:THR:CG2	5:S:158:HOH:O	2.66	0.43
1:B:190:TYR:CZ	1:B:227:LYS:HE3	2.54	0.43
1:E:11:VAL:HG12	1:E:13:PHE:HA	1.99	0.43
1:B:128:LYS:HA	1:B:128:LYS:HD2	1.82	0.43
1:H:18:LYS:HG2	1:H:19:ASP:H	1.84	0.42
1:H:190:TYR:CZ	1:H:227:LYS:HE3	2.54	0.42
1:B:295:ARG:HD3	1:B:327:HIS:O	2.19	0.42
1:L:18:LYS:HG2	1:L:19:ASP:H	1.84	0.42
1:H:295:ARG:HD3	1:H:327:HIS:O	2.19	0.42

Continued on next page...

Continued from previous page...

Atom-1	Atom-2	Distance(Å)	Clash(Å)
2:C:68:THR:CG2	5:C:504:HOH:O	2.66	0.42
2:C:12:TYR:CE1	2:C:119:LYS:HD3	2.54	0.42
1:L:142:VAL:HG22	5:L:507:HOH:O	2.19	0.42
1:L:295:ARG:HD3	1:L:327:HIS:O	2.19	0.42
2:C:5:PRO:HB2	2:C:9:LEU:HG	2.00	0.42
1:L:267:HIS:HE1	5:L:673:HOH:O	1.97	0.42
1:H:11:VAL:HG23	1:H:73:GLY:HA3	2.01	0.42
2:S:22:THR:N	2:S:25:GLN:HE21	2.08	0.42
1:B:18:LYS:HG2	1:B:19:ASP:H	1.84	0.42
1:E:18:LYS:HG2	1:E:19:ASP:H	1.84	0.42
1:L:251:MET:HB3	1:L:251:MET:HE2	1.88	0.42
2:F:22:THR:N	2:F:25:GLN:HE21	2.08	0.42
1:L:11:VAL:HG23	1:L:73:GLY:HA3	2.01	0.42
2:F:68:THR:CG2	5:F:760:HOH:O	2.66	0.42
2:S:12:TYR:CE1	2:S:119:LYS:HD3	2.54	0.42
1:E:448:ALA:HA	1:E:451:TRP:NE1	2.35	0.42
1:H:142:VAL:HG22	5:H:510:HOH:O	2.19	0.42
1:H:124:VAL:HG22	5:H:503:HOH:O	2.20	0.42
1:H:292:HIS:NE2	1:H:327:HIS:HE1	2.18	0.42
1:E:451:TRP:CH2	2:F:19:PRO:HD3	2.55	0.42
1:E:295:ARG:HD3	1:E:327:HIS:O	2.19	0.42
1:E:11:VAL:HG23	1:E:73:GLY:HA3	2.01	0.42
1:H:339:ARG:NH2	1:H:393:ILE:HG12	2.34	0.42
1:H:451:TRP:CH2	2:I:19:PRO:HD3	2.55	0.42
1:B:451:TRP:CH2	2:C:19:PRO:HD3	2.55	0.42
1:H:171:GLY:HA2	1:H:199:PHE:O	2.20	0.42
1:B:377:VAL:CG1	1:B:401:GLN:HG3	2.50	0.42
1:B:448:ALA:HA	1:B:451:TRP:NE1	2.35	0.42
1:E:213:ARG:HD3	1:E:213:ARG:HA	1.91	0.42
1:B:11:VAL:HG23	1:B:73:GLY:HA3	2.01	0.41
1:E:339:ARG:NH2	1:E:393:ILE:HG12	2.34	0.41
1:E:187:ARG:HG3	1:E:187:ARG:HH11	1.85	0.41
2:C:28:ARG:HH11	2:C:28:ARG:HG2	1.85	0.41
1:L:448:ALA:HA	1:L:451:TRP:NE1	2.35	0.41
1:B:142:VAL:HG22	5:B:508:HOH:O	2.19	0.41
1:E:463:LYS:HZ3	1:E:463:LYS:N	2.18	0.41
1:L:377:VAL:CG1	1:L:401:GLN:HG3	2.50	0.41
2:S:6:ILE:CD1	2:I:68:THR:HG21	2.51	0.41
1:B:124:VAL:HG22	5:B:501:HOH:O	2.20	0.41
1:E:142:VAL:HG22	5:E:547:HOH:O	2.19	0.41
1:H:140:ILE:HD13	1:H:320:LEU:HD11	2.03	0.41
1:L:292:HIS:NE2	1:L:327:HIS:HE1	2.18	0.41

Continued on next page...

Continued from previous page...

Atom-1	Atom-2	Distance(Å)	Clash(Å)
1:H:377:VAL:CG1	1:H:401:GLN:HG3	2.50	0.41
1:H:448:ALA:HA	1:H:451:TRP:NE1	2.35	0.41
1:E:26:THR:HG22	1:E:26:THR:O	2.21	0.41
1:H:26:THR:HG22	1:H:26:THR:O	2.21	0.41
1:L:124:VAL:HG22	5:L:500:HOH:O	2.20	0.41
1:E:140:ILE:HD13	1:E:320:LEU:HD11	2.02	0.41
1:E:138:LEU:O	1:E:316:LYS:NZ	2.52	0.41
2:S:28:ARG:HG2	2:S:28:ARG:HH11	1.85	0.41
1:L:140:ILE:HD13	1:L:320:LEU:HD11	2.03	0.41
1:L:123:ASN:CB	5:L:517:HOH:O	2.68	0.41
1:L:26:THR:O	1:L:26:THR:HG22	2.21	0.41
1:E:124:VAL:HG22	5:E:540:HOH:O	2.20	0.41
1:E:292:HIS:NE2	1:E:327:HIS:HE1	2.18	0.41
1:L:187:ARG:HG3	1:L:187:ARG:HH11	1.85	0.41
1:B:187:ARG:HG3	1:B:187:ARG:HH11	1.85	0.41
1:H:187:ARG:HH11	1:H:187:ARG:HG3	1.85	0.41
1:B:138:LEU:O	1:B:316:LYS:NZ	2.52	0.41
1:E:274:PHE:CD2	5:E:615:HOH:O	2.50	0.41
1:E:185:TYR:OH	1:E:202:ASP:HA	2.21	0.41
1:L:171:GLY:HA2	1:L:199:PHE:O	2.20	0.41
1:L:451:TRP:CH2	2:S:19:PRO:HD3	2.55	0.41
2:I:28:ARG:HH11	2:I:28:ARG:HG2	1.85	0.41
1:B:463:LYS:HZ3	1:B:463:LYS:H	1.66	0.40
1:B:185:TYR:OH	1:B:202:ASP:HA	2.21	0.40
1:E:171:GLY:HA2	1:E:199:PHE:O	2.20	0.40
1:E:377:VAL:CG1	1:E:401:GLN:HG3	2.50	0.40
1:L:133:LEU:O	1:L:307:HIS:HA	2.21	0.40
1:H:251:MET:HE2	1:H:251:MET:HB3	1.89	0.40
1:L:79:ARG:HH11	1:L:79:ARG:CG	2.33	0.40
1:H:185:TYR:OH	1:H:202:ASP:HA	2.21	0.40
1:L:185:TYR:OH	1:L:202:ASP:HA	2.21	0.40
1:H:133:LEU:O	1:H:307:HIS:HA	2.21	0.40
1:B:123:ASN:CB	5:B:518:HOH:O	2.68	0.40
1:B:171:GLY:HA2	1:B:199:PHE:O	2.20	0.40
2:F:68:THR:HG21	2:I:6:ILE:CD1	2.51	0.40
1:B:292:HIS:NE2	1:B:327:HIS:HE1	2.18	0.40
1:B:241:ASN:ND2	1:B:243:THR:H	2.20	0.40
1:E:241:ASN:ND2	1:E:243:THR:H	2.20	0.40
1:B:146:LYS:HA	1:B:146:LYS:HD2	1.85	0.40
1:H:241:ASN:ND2	1:H:243:THR:H	2.19	0.40
2:F:68:THR:HG21	2:I:6:ILE:HG12	2.04	0.40
1:B:336:GLU:HG2	1:B:337:GLY:H	1.87	0.40

Continued on next page...

Continued from previous page...

Atom-1	Atom-2	Distance(Å)	Clash(Å)
1:L:128:LYS:HD2	1:L:128:LYS:HA	1.82	0.40
1:B:315:ALA:HB1	1:B:349:LEU:HD21	2.04	0.40
2:C:120:PRO:HG2	2:C:123:TYR:CD2	2.57	0.40
1:B:140:ILE:HD13	1:B:320:LEU:HD11	2.03	0.40

All (6) symmetry-related close contacts are listed below. The label for Atom-2 includes the symmetry operator and encoded unit-cell translations to be applied.

Atom-1	Atom-2	Distance(Å)	Clash(Å)
2:I:24:ASP:CB	5:I:143:HOH:O[4_555]	1.57	0.63
2:I:24:ASP:CB	2:I:24:ASP:OD2[4_555]	1.94	0.26
2:I:24:ASP:CA	5:I:143:HOH:O[4_555]	1.96	0.24
2:I:24:ASP:CG	2:I:24:ASP:CG[4_555]	2.00	0.20
2:I:24:ASP:OD1	2:I:24:ASP:OD1[4_555]	2.08	0.12
5:B:550:HOH:O	5:B:677:HOH:O[3_555]	2.09	0.11

5.3 Torsion angles

5.3.1 Protein backbone ⓘ

In the following table, the Percentiles column shows the percent Ramachandran outliers of the chain as a percentile score with respect to all X-ray entries followed by that with respect to entries of similar resolution. The Analysed column shows the number of residues for which the backbone conformation was analysed, and the total number of residues.

Mol	Chain	Analysed	Favoured	Allowed	Outliers	Percentiles	
1	B	452/475 (95%)	430 (95%)	12 (3%)	10 (2%)	10	5
1	E	452/475 (95%)	430 (95%)	12 (3%)	10 (2%)	10	5
1	H	452/475 (95%)	430 (95%)	12 (3%)	10 (2%)	10	5
1	L	452/475 (95%)	430 (95%)	12 (3%)	10 (2%)	10	5
2	C	121/123 (98%)	117 (97%)	4 (3%)	0	100	100
2	F	121/123 (98%)	117 (97%)	4 (3%)	0	100	100
2	I	121/123 (98%)	117 (97%)	4 (3%)	0	100	100
2	S	121/123 (98%)	117 (97%)	4 (3%)	0	100	100
All	All	2292/2392 (96%)	2188 (96%)	64 (3%)	40 (2%)	14	8

All (40) Ramachandran outliers are listed below:

Mol	Chain	Res	Type
1	L	10	SER
1	L	13	PHE
1	L	21	LYS
1	B	10	SER
1	B	13	PHE
1	B	21	LYS
1	E	10	SER
1	E	13	PHE
1	E	21	LYS
1	H	10	SER
1	H	13	PHE
1	H	21	LYS
1	L	17	VAL
1	L	20	TYR
1	L	23	THR
1	B	17	VAL
1	B	20	TYR
1	B	23	THR
1	E	17	VAL
1	E	20	TYR
1	E	23	THR
1	H	17	VAL
1	H	20	TYR
1	H	23	THR
1	L	11	VAL
1	L	12	GLY
1	B	11	VAL
1	B	12	GLY
1	E	11	VAL
1	E	12	GLY
1	H	11	VAL
1	H	12	GLY
1	L	62	SER
1	B	62	SER
1	E	62	SER
1	H	62	SER
1	L	14	LYS
1	B	14	LYS
1	E	14	LYS
1	H	14	LYS

5.3.2 Protein sidechains ⓘ

In the following table, the Percentiles column shows the percent sidechain outliers of the chain as a percentile score with respect to all X-ray entries followed by that with respect to entries of similar resolution. The Analysed column shows the number of residues for which the sidechain conformation was analysed, and the total number of residues.

Mol	Chain	Analysed	Rotameric	Outliers	Percentiles	
1	B	366/385 (95%)	355 (97%)	11 (3%)	53	64
1	E	366/385 (95%)	355 (97%)	11 (3%)	53	64
1	H	366/385 (95%)	355 (97%)	11 (3%)	53	64
1	L	366/385 (95%)	355 (97%)	11 (3%)	53	64
2	C	112/112 (100%)	103 (92%)	9 (8%)	17	16
2	F	112/112 (100%)	103 (92%)	9 (8%)	17	16
2	I	112/112 (100%)	103 (92%)	9 (8%)	17	16
2	S	112/112 (100%)	103 (92%)	9 (8%)	17	16
All	All	1912/1988 (96%)	1832 (96%)	80 (4%)	40	48

All (80) residues with a non-rotameric sidechain are listed below:

Mol	Chain	Res	Type
1	L	11	VAL
1	L	14	LYS
1	L	75	THR
1	L	77	LEU
1	L	78	ASP
1	L	121	VAL
1	L	172	CYS
1	L	225	LEU
1	L	241	ASN
1	L	375	LEU
1	L	463	LYS
2	S	2	GLN
2	S	6	ILE
2	S	9	LEU
2	S	24	ASP
2	S	31	ASP
2	S	37	LYS
2	S	47	ASP
2	S	48	HIS
2	S	68	THR
1	B	11	VAL

Continued on next page...

Continued from previous page...

Mol	Chain	Res	Type
1	B	14	LYS
1	B	75	THR
1	B	77	LEU
1	B	78	ASP
1	B	121	VAL
1	B	172	CYS
1	B	225	LEU
1	B	241	ASN
1	B	375	LEU
1	B	463	LYS
2	C	2	GLN
2	C	6	ILE
2	C	9	LEU
2	C	24	ASP
2	C	31	ASP
2	C	37	LYS
2	C	47	ASP
2	C	48	HIS
2	C	68	THR
1	E	11	VAL
1	E	14	LYS
1	E	75	THR
1	E	77	LEU
1	E	78	ASP
1	E	121	VAL
1	E	172	CYS
1	E	225	LEU
1	E	241	ASN
1	E	375	LEU
1	E	463	LYS
2	F	2	GLN
2	F	6	ILE
2	F	9	LEU
2	F	24	ASP
2	F	31	ASP
2	F	37	LYS
2	F	47	ASP
2	F	48	HIS
2	F	68	THR
1	H	11	VAL
1	H	14	LYS
1	H	75	THR

Continued on next page...

Continued from previous page...

Mol	Chain	Res	Type
1	H	77	LEU
1	H	78	ASP
1	H	121	VAL
1	H	172	CYS
1	H	225	LEU
1	H	241	ASN
1	H	375	LEU
1	H	463	LYS
2	I	2	GLN
2	I	6	ILE
2	I	9	LEU
2	I	24	ASP
2	I	31	ASP
2	I	37	LYS
2	I	47	ASP
2	I	48	HIS
2	I	68	THR

Some sidechains can be flipped to improve hydrogen bonding and reduce clashes. All (76) such sidechains are listed below:

Mol	Chain	Res	Type
1	L	153	HIS
1	L	163	ASN
1	L	184	ASN
1	L	205	ASN
1	L	207	ASN
1	L	229	GLN
1	L	238	HIS
1	L	241	ASN
1	L	267	HIS
1	L	277	ASN
1	L	282	HIS
1	L	304	GLN
1	L	327	HIS
1	L	386	HIS
1	L	420	ASN
1	L	432	ASN
2	S	25	GLN
2	S	29	GLN
2	S	55	HIS
1	B	153	HIS
1	B	163	ASN

Continued on next page...

Continued from previous page...

Mol	Chain	Res	Type
1	B	184	ASN
1	B	205	ASN
1	B	207	ASN
1	B	229	GLN
1	B	238	HIS
1	B	241	ASN
1	B	267	HIS
1	B	277	ASN
1	B	282	HIS
1	B	304	GLN
1	B	327	HIS
1	B	386	HIS
1	B	420	ASN
1	B	432	ASN
2	C	25	GLN
2	C	29	GLN
2	C	55	HIS
1	E	153	HIS
1	E	163	ASN
1	E	184	ASN
1	E	205	ASN
1	E	207	ASN
1	E	229	GLN
1	E	238	HIS
1	E	241	ASN
1	E	267	HIS
1	E	277	ASN
1	E	282	HIS
1	E	304	GLN
1	E	327	HIS
1	E	386	HIS
1	E	420	ASN
1	E	432	ASN
2	F	25	GLN
2	F	29	GLN
2	F	55	HIS
1	H	153	HIS
1	H	163	ASN
1	H	184	ASN
1	H	205	ASN
1	H	207	ASN
1	H	229	GLN

Continued on next page...

Continued from previous page...

Mol	Chain	Res	Type
1	H	238	HIS
1	H	241	ASN
1	H	267	HIS
1	H	277	ASN
1	H	282	HIS
1	H	304	GLN
1	H	327	HIS
1	H	386	HIS
1	H	420	ASN
1	H	432	ASN
2	I	25	GLN
2	I	29	GLN
2	I	55	HIS

5.3.3 RNA ⓘ

There are no RNA chains in this entry.

5.4 Non-standard residues in protein, DNA, RNA chains ⓘ

4 non-standard protein/DNA/RNA residues are modelled in this entry.

In the following table, the Counts columns list the number of bonds (or angles) for which Mogul statistics could be retrieved, the number of bonds (or angles) that are observed in the model and the number of bonds (or angles) that are defined in the chemical component dictionary. The Link column lists molecule types, if any, to which the group is linked. The Z score for a bond length (or angle) is the number of standard deviations the observed value is removed from the expected value. A bond length (or angle) with $|Z| > 2$ is considered an outlier worth inspection. RMSZ is the root-mean-square of all Z scores of the bond lengths (or angles).

Mol	Type	Chain	Res	Link	Bond lengths			Bond angles		
					Counts	RMSZ	$\# Z > 2$	Counts	RMSZ	$\# Z > 2$
1	KCX	B	201	1,4	11,11,12	5.72	2 (18%)	10,12,14	2.07	4 (40%)
1	KCX	E	201	1,4	11,11,12	5.74	3 (27%)	10,12,14	2.09	4 (40%)
1	KCX	H	201	1,4	11,11,12	5.76	3 (27%)	10,12,14	2.08	4 (40%)
1	KCX	L	201	1,4	11,11,12	5.75	3 (27%)	10,12,14	2.09	4 (40%)

In the following table, the Chirals column lists the number of chiral outliers, the number of chiral centers analysed, the number of these observed in the model and the number defined in the chemical component dictionary. Similar counts are reported in the Torsion and Rings columns. '-' means no outliers of that kind were identified.

Mol	Type	Chain	Res	Link	Chirals	Torsions	Rings
1	KCX	B	201	1,4	-	0/8/10/12	0/0/0/0
1	KCX	E	201	1,4	-	0/8/10/12	0/0/0/0
1	KCX	H	201	1,4	-	0/8/10/12	0/0/0/0
1	KCX	L	201	1,4	-	0/8/10/12	0/0/0/0

All (11) bond length outliers are listed below:

Mol	Chain	Res	Type	Atoms	Z	Observed(Å)	Ideal(Å)
1	H	201	KCX	O-C	18.71	1.24	1.11
1	L	201	KCX	O-C	18.64	1.24	1.11
1	E	201	KCX	O-C	18.60	1.24	1.11
1	B	201	KCX	O-C	18.54	1.24	1.11
1	L	201	KCX	CA-C	2.76	1.53	1.48
1	B	201	KCX	CA-C	2.76	1.53	1.48
1	E	201	KCX	CA-C	2.75	1.53	1.48
1	H	201	KCX	CA-C	2.73	1.53	1.48
1	L	201	KCX	OQ1-CX	2.03	1.25	1.21
1	H	201	KCX	OQ1-CX	2.02	1.25	1.21
1	E	201	KCX	OQ1-CX	2.00	1.25	1.21

All (16) bond angle outliers are listed below:

Mol	Chain	Res	Type	Atoms	Z	Observed(°)	Ideal(°)
1	E	201	KCX	OQ2-CX-NZ	3.43	120.61	116.33
1	L	201	KCX	OQ2-CX-NZ	3.43	120.60	116.33
1	H	201	KCX	OQ2-CX-NZ	3.42	120.58	116.33
1	B	201	KCX	OQ2-CX-NZ	3.39	120.55	116.33
1	E	201	KCX	OQ2-CX-OQ1	-3.16	118.22	122.17
1	L	201	KCX	OQ2-CX-OQ1	-3.15	118.23	122.17
1	B	201	KCX	OQ2-CX-OQ1	-3.15	118.24	122.17
1	H	201	KCX	OQ2-CX-OQ1	-3.14	118.25	122.17
1	E	201	KCX	C-CA-N	3.02	116.84	113.83
1	H	201	KCX	C-CA-N	3.00	116.82	113.83
1	L	201	KCX	C-CA-N	3.00	116.82	113.83
1	B	201	KCX	C-CA-N	2.96	116.79	113.83
1	E	201	KCX	OQ1-CX-NZ	-2.27	121.17	124.94
1	H	201	KCX	OQ1-CX-NZ	-2.27	121.17	124.94
1	L	201	KCX	OQ1-CX-NZ	-2.26	121.17	124.94
1	B	201	KCX	OQ1-CX-NZ	-2.24	121.21	124.94

There are no chirality outliers.

There are no torsion outliers.

There are no ring outliers.

5.5 Carbohydrates

There are no carbohydrates in this entry.

5.6 Ligand geometry

Of 8 ligands modelled in this entry, 4 are monoatomic - leaving 4 for Mogul analysis.

In the following table, the Counts columns list the number of bonds (or angles) for which Mogul statistics could be retrieved, the number of bonds (or angles) that are observed in the model and the number of bonds (or angles) that are defined in the chemical component dictionary. The Link column lists molecule types, if any, to which the group is linked. The Z score for a bond length (or angle) is the number of standard deviations the observed value is removed from the expected value. A bond length (or angle) with $|Z| > 2$ is considered an outlier worth inspection. RMSZ is the root-mean-square of all Z scores of the bond lengths (or angles).

Mol	Type	Chain	Res	Link	Bond lengths			Bond angles		
					Counts	RMSZ	$\# Z > 2$	Counts	RMSZ	$\# Z > 2$
3	RUB	B	476	4	17,17,17	1.91	4 (23%)	25,25,25	1.77	4 (16%)
3	RUB	E	476	4	17,17,17	1.88	4 (23%)	25,25,25	1.77	4 (16%)
3	RUB	H	476	4	17,17,17	1.90	4 (23%)	25,25,25	1.77	4 (16%)
3	RUB	L	476	4	17,17,17	1.89	4 (23%)	25,25,25	1.77	4 (16%)

In the following table, the Chirals column lists the number of chiral outliers, the number of chiral centers analysed, the number of these observed in the model and the number defined in the chemical component dictionary. Similar counts are reported in the Torsion and Rings columns. '-' means no outliers of that kind were identified.

Mol	Type	Chain	Res	Link	Chirals	Torsions	Rings
3	RUB	B	476	4	-	0/20/20/20	0/0/0/0
3	RUB	E	476	4	-	0/20/20/20	0/0/0/0
3	RUB	H	476	4	-	0/20/20/20	0/0/0/0
3	RUB	L	476	4	-	0/20/20/20	0/0/0/0

All (16) bond length outliers are listed below:

Mol	Chain	Res	Type	Atoms	Z	Observed(Å)	Ideal(Å)
3	B	476	RUB	C3-C2	4.13	1.58	1.52
3	L	476	RUB	C3-C2	4.09	1.58	1.52
3	H	476	RUB	C3-C2	4.07	1.58	1.52
3	E	476	RUB	C3-C2	4.04	1.58	1.52

Continued on next page...

Continued from previous page...

Mol	Chain	Res	Type	Atoms	Z	Observed(Å)	Ideal(Å)
3	B	476	RUB	O1-C1	3.85	1.45	1.43
3	H	476	RUB	O1-C1	3.84	1.45	1.43
3	L	476	RUB	O1-C1	3.79	1.45	1.43
3	E	476	RUB	O1-C1	3.72	1.45	1.43
3	H	476	RUB	P1-O3P	-2.29	1.46	1.54
3	L	476	RUB	P1-O3P	-2.28	1.46	1.54
3	B	476	RUB	P1-O3P	-2.27	1.46	1.54
3	E	476	RUB	P1-O3P	-2.27	1.46	1.54
3	B	476	RUB	O2-C2	2.05	1.25	1.21
3	L	476	RUB	O2-C2	2.04	1.25	1.21
3	H	476	RUB	O2-C2	2.03	1.25	1.21
3	E	476	RUB	O2-C2	2.02	1.25	1.21

All (16) bond angle outliers are listed below:

Mol	Chain	Res	Type	Atoms	Z	Observed(°)	Ideal(°)
3	E	476	RUB	O1-C1-C2	5.97	119.80	110.31
3	H	476	RUB	O1-C1-C2	5.96	119.80	110.31
3	L	476	RUB	O1-C1-C2	5.95	119.77	110.31
3	B	476	RUB	O1-C1-C2	5.92	119.72	110.31
3	E	476	RUB	O6P-P2-O4P	2.99	120.21	110.44
3	L	476	RUB	O6P-P2-O4P	2.98	120.19	110.44
3	B	476	RUB	O6P-P2-O4P	2.98	120.19	110.44
3	H	476	RUB	O6P-P2-O4P	2.97	120.15	110.44
3	H	476	RUB	C4-C3-C2	2.96	114.59	110.77
3	L	476	RUB	C4-C3-C2	2.94	114.58	110.77
3	E	476	RUB	C4-C3-C2	2.94	114.57	110.77
3	B	476	RUB	C4-C3-C2	2.93	114.55	110.77
3	B	476	RUB	O3P-P1-O1P	2.84	119.72	110.44
3	E	476	RUB	O3P-P1-O1P	2.83	119.69	110.44
3	L	476	RUB	O3P-P1-O1P	2.83	119.69	110.44
3	H	476	RUB	O3P-P1-O1P	2.83	119.69	110.44

There are no chirality outliers.

There are no torsion outliers.

There are no ring outliers.

5.7 Other polymers ⓘ

There are no such residues in this entry.

5.8 Polymer linkage issues

There are no chain breaks in this entry.

6 Fit of model and data ⓘ

6.1 Protein, DNA and RNA chains ⓘ

In the following table, the column labelled ‘#RSRZ> 2’ contains the number (and percentage) of RSRZ outliers, followed by percent RSRZ outliers for the chain as percentile scores relative to all X-ray entries and entries of similar resolution. The OWAB column contains the minimum, median, 95th percentile and maximum values of the occupancy-weighted average B-factor per residue. The column labelled ‘Q< 0.9’ lists the number of (and percentage) of residues with an average occupancy less than 0.9.

Mol	Chain	Analysed	<RSRZ>	#RSRZ>2	OWAB(Å ²)	Q<0.9
1	B	455/475 (95%)	-0.15	28 (6%) 20 19	4, 13, 45, 58	0
1	E	455/475 (95%)	-0.33	20 (4%) 33 33	4, 13, 45, 58	0
1	H	455/475 (95%)	-0.40	18 (3%) 36 37	4, 13, 45, 58	0
1	L	455/475 (95%)	-0.35	23 (5%) 27 27	4, 13, 45, 58	0
2	C	123/123 (100%)	0.15	6 (4%) 28 28	7, 26, 44, 51	0
2	F	123/123 (100%)	-0.04	5 (4%) 35 36	7, 26, 44, 51	0
2	I	123/123 (100%)	0.00	4 (3%) 44 45	7, 26, 44, 51	0
2	S	123/123 (100%)	0.30	6 (4%) 28 28	7, 26, 44, 51	0
All	All	2312/2392 (96%)	-0.22	110 (4%) 30 29	4, 16, 45, 58	0

All (110) RSRZ outliers are listed below:

Mol	Chain	Res	Type	RSRZ
1	E	10	SER	12.7
1	B	10	SER	11.1
1	B	11	VAL	10.6
1	B	9	ALA	10.6
1	L	10	SER	10.2
1	L	9	ALA	10.1
1	E	11	VAL	9.5
1	H	9	ALA	9.1
1	E	9	ALA	8.9
1	H	10	SER	8.3
1	B	335	LEU	8.0
1	B	12	GLY	8.0
1	H	11	VAL	7.8
1	L	11	VAL	7.1
1	H	333	GLY	6.8
1	E	17	VAL	5.9

Continued on next page...

Continued from previous page...

Mol	Chain	Res	Type	RSRZ
1	L	12	GLY	5.7
1	H	335	LEU	5.7
1	L	17	VAL	5.4
1	L	333	GLY	5.3
1	B	333	GLY	5.3
1	E	92	GLY	5.3
1	L	335	LEU	5.3
1	B	22	LEU	5.1
1	L	22	LEU	4.9
1	E	335	LEU	4.9
1	E	12	GLY	4.8
1	H	337	GLY	4.6
1	L	13	PHE	4.5
2	I	121	ALA	4.5
1	H	12	GLY	4.5
2	S	76	GLY	4.2
1	B	14	LYS	4.2
2	S	122	GLY	4.1
1	B	337	GLY	3.8
2	F	121	ALA	3.8
1	L	14	LYS	3.7
1	H	22	LEU	3.7
1	B	336	GLU	3.6
1	E	14	LYS	3.6
1	E	333	GLY	3.5
1	B	21	LYS	3.5
1	L	19	ASP	3.4
1	L	337	GLY	3.4
1	E	20	TYR	3.4
1	H	20	TYR	3.3
1	L	21	LYS	3.3
1	L	92	GLY	3.3
2	C	121	ALA	3.3
1	E	336	GLU	3.3
1	H	336	GLU	3.2
1	L	20	TYR	3.2
2	S	121	ALA	3.2
1	E	22	LEU	3.1
1	E	18	LYS	3.1
1	H	17	VAL	3.1
1	H	14	LYS	3.0
1	E	439	ARG	3.0

Continued on next page...

Continued from previous page...

Mol	Chain	Res	Type	RSRZ
1	L	439	ARG	3.0
1	B	439	ARG	2.9
1	L	18	LYS	2.9
1	B	19	ASP	2.9
1	B	92	GLY	2.9
2	S	81	ALA	2.9
2	I	122	GLY	2.8
1	B	451	TRP	2.8
1	L	463	LYS	2.8
1	E	19	ASP	2.8
1	B	47	GLY	2.8
1	L	336	GLU	2.7
1	B	20	TYR	2.7
1	E	21	LYS	2.6
1	B	15	ALA	2.6
2	F	122	GLY	2.6
2	C	48	HIS	2.6
2	I	24	ASP	2.5
2	C	123	TYR	2.4
2	S	23	THR	2.4
1	B	450	LYS	2.4
2	C	92	LYS	2.4
2	I	123	TYR	2.4
1	L	331	VAL	2.4
1	L	332	VAL	2.4
2	F	24	ASP	2.4
2	S	8	ASN	2.4
1	E	332	VAL	2.4
2	C	2	GLN	2.3
1	H	94	GLU	2.3
1	E	13	PHE	2.3
1	L	334	LYS	2.3
1	B	331	VAL	2.3
2	F	120	PRO	2.3
1	L	16	GLY	2.3
1	B	18	LYS	2.3
1	B	463	LYS	2.2
1	H	21	LYS	2.2
2	C	21	LEU	2.2
1	H	334	LYS	2.2
1	H	19	ASP	2.2
1	B	94	GLU	2.2

Continued on next page...

Continued from previous page...

Mol	Chain	Res	Type	RSRZ
1	H	13	PHE	2.2
1	B	13	PHE	2.2
1	E	334	LYS	2.2
1	B	46	PRO	2.1
1	B	332	VAL	2.1
1	H	463	LYS	2.1
1	E	463	LYS	2.1
1	B	449	THR	2.1
2	F	48	HIS	2.0
1	B	17	VAL	2.0

6.2 Non-standard residues in protein, DNA, RNA chains ⓘ

In the following table, the Atoms column lists the number of modelled atoms in the group and the number defined in the chemical component dictionary. LLDF column lists the quality of electron density of the group with respect to its neighbouring residues in protein, DNA or RNA chains. The B-factors column lists the minimum, median, 95th percentile and maximum values of B factors of atoms in the group. The column labelled 'Q< 0.9' lists the number of atoms with occupancy less than 0.9.

Mol	Type	Chain	Res	Atoms	RSR	LLDF	B-factors(Å ²)	Q<0.9
1	KCX	B	201	12/13	0.13	1.50	7,12,22,25	0
1	KCX	H	201	12/13	0.10	0.73	7,12,22,25	0
1	KCX	L	201	12/13	0.10	0.33	7,12,22,25	0
1	KCX	E	201	12/13	0.09	-0.08	7,12,22,25	0

6.3 Carbohydrates ⓘ

There are no carbohydrates in this entry.

6.4 Ligands ⓘ

In the following table, the Atoms column lists the number of modelled atoms in the group and the number defined in the chemical component dictionary. LLDF column lists the quality of electron density of the group with respect to its neighbouring residues in protein, DNA or RNA chains. The B-factors column lists the minimum, median, 95th percentile and maximum values of B factors of atoms in the group. The column labelled 'Q< 0.9' lists the number of atoms with occupancy less than 0.9.

Mol	Type	Chain	Res	Atoms	RSR	LLDF	B-factors(Å ²)	Q<0.9
4	CA	B	477	1/1	0.17	2.02	32,32,32,32	0

Continued on next page...

Continued from previous page...

Mol	Type	Chain	Res	Atoms	RSR	LLDF	B-factors(\AA^2)	Q<0.9
3	RUB	L	476	18/18	0.16	1.77	24,33,39,41	0
3	RUB	E	476	18/18	0.15	1.42	24,33,39,41	0
3	RUB	H	476	18/18	0.13	0.91	24,33,39,41	0
3	RUB	B	476	18/18	0.14	0.84	24,33,39,41	0
4	CA	H	477	1/1	0.09	-0.66	32,32,32,32	0
4	CA	E	477	1/1	0.08	-1.19	32,32,32,32	0
4	CA	L	477	1/1	0.06	-12.31	32,32,32,32	0

6.5 Other polymers ⓘ

There are no such residues in this entry.