



wwPDB X-ray Structure Validation Summary Report

Feb 28, 2014 – 01:31 AM GMT

PDB ID : 1S17
Title : Identification of Novel Potent Bicyclic Peptide Deformylase Inhibitors
Authors : Molteni, V.; He, X.; Nabakka, J.; Yang, K.; Kreusch, A.; Gordon, P.; Bursulaya, B.; Ryder, N.S.; Goldberg, R.; He, Y.
Deposited on : 2004-01-05
Resolution : 1.95 Å(reported)

This is a wwPDB validation summary report for a publicly released PDB entry.

We welcome your comments at validation@mail.wwpdb.org

A user guide is available at <http://wwpdb.org/ValidationPDFNotes.html>

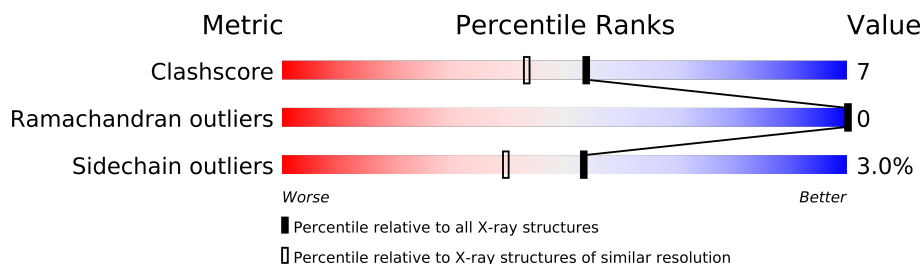
The following versions of software and data (see [references](#)) were used in the production of this report:

MolProbity	:	4.02b-467
Mogul	:	1.15 2013
Xtriage (Phenix)	:	NOT EXECUTED
EDS	:	NOT EXECUTED
Percentile statistics	:	21963
Ideal geometry (proteins)	:	Engh & Huber (2001)
Ideal geometry (DNA, RNA)	:	Parkinson et. al. (1996)
Validation Pipeline (wwPDB-VP)	:	stable22683

1 Overall quality at a glance

The reported resolution of this entry is 1.95 Å.

Percentile scores (ranging between 0-100) for global validation metrics of the entry are shown in the following graphic. The table shows the number of entries on which the scores are based.



Metric	Whole archive (#Entries)	Similar resolution (#Entries, resolution range(Å))
Clashscore	79885	1488 (1.96-1.96)
Ramachandran outliers	78287	1475 (1.96-1.96)
Sidechain outliers	78261	1475 (1.96-1.96)

The table below summarises the geometric issues observed across the polymeric chains and their fit to the electron density. The red, orange, yellow and green segments on the lower bar indicate the fraction of residues that contain outliers for ≥ 3 , 2, 1 and 0 types of geometric quality criteria. The upper red bar (where present) indicates the fraction of residues that have poor fit to the electron density.

Note EDS was not executed.

Mol	Chain	Length	Quality of chain
1	A	180	
1	B	180	

The following table lists non-polymeric compounds that are outliers for geometric or electron-density-fit criteria:

Mol	Type	Chain	Res	Geometry	Electron density
4	GOL	A	401	X	-

2 Entry composition

There are 5 unique types of molecules in this entry. The entry contains 2918 atoms, of which 0 are hydrogen and 0 are deuterium.

In the tables below, the ZeroOcc column contains the number of atoms modelled with zero occupancy, the AltConf column contains the number of residues with at least one atom in alternate conformation and the Trace column contains the number of residues modelled with at most 2 atoms.

- Molecule 1 is a protein called Peptide deformylase.

Mol	Chain	Residues	Atoms					ZeroOcc	AltConf	Trace
1	A	166	Total	C	N	O	S	0	0	0
			1342	846	234	255	7			
1	B	164	Total	C	N	O	S	0	0	0
			1328	838	231	252	7			

There are 26 discrepancies between the modelled and reference sequences:

Chain	Residue	Modelled	Actual	Comment	Reference
A	-11	MET	-	EXPRESSION TAG	UNP Q9I7A8
A	-10	GLY	-	EXPRESSION TAG	UNP Q9I7A8
A	-9	SER	-	EXPRESSION TAG	UNP Q9I7A8
A	-8	ASP	-	EXPRESSION TAG	UNP Q9I7A8
A	-7	LYS	-	EXPRESSION TAG	UNP Q9I7A8
A	-6	ILE	-	EXPRESSION TAG	UNP Q9I7A8
A	-5	HIS	-	EXPRESSION TAG	UNP Q9I7A8
A	-4	HIS	-	EXPRESSION TAG	UNP Q9I7A8
A	-3	HIS	-	EXPRESSION TAG	UNP Q9I7A8
A	-2	HIS	-	EXPRESSION TAG	UNP Q9I7A8
A	-1	HIS	-	EXPRESSION TAG	UNP Q9I7A8
A	0	HIS	-	EXPRESSION TAG	UNP Q9I7A8
A	84	GLU	ASP	CONFLICT	UNP Q9I7A8
B	-11	MET	-	EXPRESSION TAG	UNP Q9I7A8
B	-10	GLY	-	EXPRESSION TAG	UNP Q9I7A8
B	-9	SER	-	EXPRESSION TAG	UNP Q9I7A8
B	-8	ASP	-	EXPRESSION TAG	UNP Q9I7A8
B	-7	LYS	-	EXPRESSION TAG	UNP Q9I7A8
B	-6	ILE	-	EXPRESSION TAG	UNP Q9I7A8
B	-5	HIS	-	EXPRESSION TAG	UNP Q9I7A8
B	-4	HIS	-	EXPRESSION TAG	UNP Q9I7A8
B	-3	HIS	-	EXPRESSION TAG	UNP Q9I7A8
B	-2	HIS	-	EXPRESSION TAG	UNP Q9I7A8
B	-1	HIS	-	EXPRESSION TAG	UNP Q9I7A8
B	0	HIS	-	EXPRESSION TAG	UNP Q9I7A8

Continued on next page...

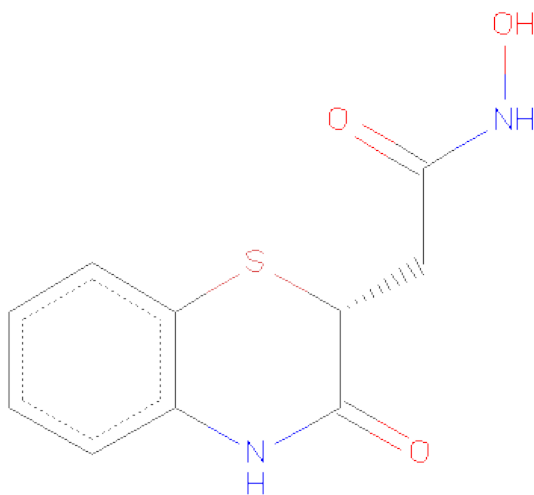
Continued from previous page...

Chain	Residue	Modelled	Actual	Comment	Reference
B	84	GLU	ASP	CONFLICT	UNP Q9I7A8

- Molecule 2 is NICKEL (II) ION (three-letter code: NI) (formula: Ni).

Mol	Chain	Residues	Atoms	ZeroOcc	AltConf
2	B	1	Total Ni 1 1	0	0
2	A	1	Total Ni 1 1	0	0

- Molecule 3 is 2-(3,4-DIHYDRO-3-OXO-2H-BENZO[B][1,4]THIAZIN-2-YL)-N-HYDROXY ACETAMIDE (three-letter code: GNR) (formula: C₁₀H₁₀N₂O₃S).



Mol	Chain	Residues	Atoms	ZeroOcc	AltConf
3	A	1	Total C N O S 16 10 2 3 1	0	0
3	B	1	Total C N O S 16 10 2 3 1	0	0

- Molecule 4 is GLYCEROL (three-letter code: GOL) (formula: C₃H₈O₃).



Mol	Chain	Residues	Atoms			ZeroOcc	AltConf
4	A	1	Total	C	O	0	0
			6	3	3		

- Molecule 5 is water.

Mol	Chain	Residues	Atoms		ZeroOcc	AltConf
5	A	122	Total	O	0	0
			122	122		
5	B	86	Total	O	0	0
			86	86		

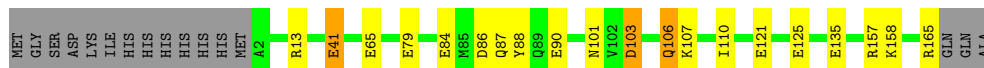
i

Note EDS was not executed.

- Chain A:



Chain B:



4 Data and refinement statistics

Xtriage (Phenix) and EDS were not executed - this section will therefore be incomplete.

Property	Value	Source
Space group	P 21 21 21	Depositor
Cell constants a, b, c, α , β , γ	69.01Å 73.99Å 76.86Å 90.00° 90.00° 90.00°	Depositor
Resolution (Å)	25.68 – 1.95	Depositor
% Data completeness (in resolution range)	98.7 (25.68-1.95)	Depositor
R_{merge}	(Not available)	Depositor
R_{sym}	0.07	Depositor
Refinement program	CNS	Depositor
R, R_{free}	0.196 , 0.233	Depositor
Estimated twinning fraction	No twinning to report.	Xtriage
Total number of atoms	2918	wwPDB-VP
Average B, all atoms (Å ²)	26.0	wwPDB-VP

5 Model quality

5.1 Standard geometry

Bond lengths and bond angles in the following residue types are not validated in this section: GNR, GOL, NI

The Z score for a bond length (or angle) is the number of standard deviations the observed value is removed from the expected value. A bond length (or angle) with $|Z| > 5$ is considered an outlier worth inspection. RMSZ is the root-mean-square of all Z scores of the bond lengths (or angles).

Mol	Chain	Bond lengths		Bond angles	
		RMSZ	$\# Z > 5$	RMSZ	$\# Z > 5$
1	A	0.84	0/1366	0.88	1/1846 (0.1%)
1	B	0.81	0/1352	0.92	2/1827 (0.1%)
All	All	0.83	0/2718	0.90	3/3673 (0.1%)

There are no bond length outliers.

All (3) bond angle outliers are listed below:

Mol	Chain	Res	Type	Atoms	Z	Observed(°)	Ideal(°)
1	B	13	ARG	NE-CZ-NH1	-6.28	117.16	120.30
1	A	61	MET	CG-SD-CE	5.72	109.34	100.20
1	B	157	ARG	NE-CZ-NH1	5.42	123.01	120.30

There are no chirality outliers.

There are no planarity outliers.

5.2 Close contacts

In the following table, the Non-H and H(model) columns list the number of non-hydrogen atoms and hydrogen atoms in the chain respectively. The H(added) column lists the number of hydrogens added by MolProbity. The Clashes column lists the number of clashes within the asymmetric unit, and the number in parentheses is this value normalized per 1000 atoms of the molecule in the chain. The Symm-Clashes column gives symmetry related clashes, in the same way as for the Clashes column.

Mol	Chain	Non-H	H(model)	H(added)	Clashes	Symm-Clashes
1	A	1342	0	1334	21	0
1	B	1328	0	1324	16	0
2	A	1	0	0	0	0
2	B	1	0	0	0	0

Continued on next page...

Continued from previous page...

Mol	Chain	Non-H	H(model)	H(added)	Clashes	Symm-Clashes
3	A	16	0	9	4	0
3	B	16	0	9	5	0
4	A	6	0	3	1	0
5	A	122	0	0	1	0
5	B	86	0	0	5	0
All	All	2918	0	2679	37	0

Clashscore is defined as the number of clashes calculated for the entry per 1000 atoms (including hydrogens) of the entry. The overall clashscore for this entry is 7.

The worst 5 of 37 close contacts within the same asymmetric unit are listed below.

Atom-1	Atom-2	Distance(Å)	Clash(Å)
1:A:86:ASP:HB2	1:A:106:GLN:HG2	1.15	1.10
1:B:106:GLN:HG2	5:B:674:HOH:O	1.65	0.95
1:B:88:TYR:HE2	3:B:601:GNR:HAB	1.34	0.93
1:A:86:ASP:HB2	1:A:106:GLN:CG	2.01	0.90
1:B:88:TYR:CE2	3:B:601:GNR:HAB	2.11	0.86

There are no symmetry-related clashes.

5.3 Torsion angles

5.3.1 Protein backbone ⓘ

In the following table, the Percentiles column shows the percent Ramachandran outliers of the chain as a percentile score with respect to all X-ray entries followed by that with respect to entries of similar resolution. The Analysed column shows the number of residues for which the backbone conformation was analysed, and the total number of residues.

Mol	Chain	Analysed	Favoured	Allowed	Outliers	Percentiles	
1	A	164/180 (91%)	163 (99%)	1 (1%)	0	100	100
1	B	162/180 (90%)	160 (99%)	2 (1%)	0	100	100
All	All	326/360 (91%)	323 (99%)	3 (1%)	0	100	100

There are no Ramachandran outliers to report.

5.3.2 Protein sidechains ⓘ

In the following table, the Percentiles column shows the percent sidechain outliers of the chain as a percentile score with respect to all X-ray entries followed by that with respect to entries of

similar resolution. The Analysed column shows the number of residues for which the sidechain conformation was analysed, and the total number of residues.

Mol	Chain	Analysed	Rotameric	Outliers	Percentiles	
1	A	149/162 (92%)	145 (97%)	4 (3%)	57	45
1	B	148/162 (91%)	143 (97%)	5 (3%)	49	34
All	All	297/324 (92%)	288 (97%)	9 (3%)	53	39

5 of 9 residues with a non-rotameric sidechain are listed below:

Mol	Chain	Res	Type
1	B	41	GLU
1	B	165	ARG
1	B	103	ASP
1	A	82	THR
1	B	65	GLU

Some sidechains can be flipped to improve hydrogen bonding and reduce clashes. All (2) such sidechains are listed below:

Mol	Chain	Res	Type
1	A	87	GLN
1	A	106	GLN

5.3.3 RNA ⓘ

There are no RNA chains in this entry.

5.4 Non-standard residues in protein, DNA, RNA chains ⓘ

There are no non-standard protein/DNA/RNA residues in this entry.

5.5 Carbohydrates ⓘ

There are no carbohydrates in this entry.

5.6 Ligand geometry ⓘ

Of 5 ligands modelled in this entry, 2 are monoatomic - leaving 3 for Mogul analysis.

In the following table, the Counts columns list the number of bonds (or angles) for which Mogul statistics could be retrieved, the number of bonds (or angles) that are observed in the model and

the number of bonds (or angles) that are defined in the chemical component dictionary. The Link column lists molecule types, if any, to which the group is linked. The Z score for a bond length (or angle) is the number of standard deviations the observed value is removed from the expected value. A bond length (or angle) with $|Z| > 2$ is considered an outlier worth inspection. RMSZ is the root-mean-square of all Z scores of the bond lengths (or angles).

Mol	Type	Chain	Res	Link	Bond lengths			Bond angles		
					Counts	RMSZ	# Z > 2	Counts	RMSZ	# Z > 2
4	GOL	A	401	-	5,5,5	4.41	5 (100%)	5,5,5	2.49	3 (60%)
3	GNR	A	501	2	17,17,17	1.40	4 (23%)	23,23,23	0.96	0
3	GNR	B	601	2	17,17,17	1.40	3 (17%)	23,23,23	0.98	0

In the following table, the Chirals column lists the number of chiral outliers, the number of chiral centers analysed, the number of these observed in the model and the number defined in the chemical component dictionary. Similar counts are reported in the Torsion and Rings columns. '-' means no outliers of that kind were identified.

Mol	Type	Chain	Res	Link	Chirals	Torsions	Rings
4	GOL	A	401	-	-	0/4/4/4	0/0/0/0
3	GNR	A	501	2	-	0/6/18/18	0/0/2/2
3	GNR	B	601	2	-	0/6/18/18	0/0/2/2

The worst 5 of 12 bond length outliers are listed below:

Mol	Chain	Res	Type	Atoms	Z	Observed(Å)	Ideal(Å)
4	A	401	GOL	O2-C2	-5.67	1.25	1.43
4	A	401	GOL	C1-C2	-5.59	1.29	1.52
4	A	401	GOL	O1-C1	-3.57	1.26	1.42
4	A	401	GOL	O3-C3	3.51	1.57	1.42
3	B	601	GNR	OAP-NAO	-3.09	1.34	1.39

All (3) bond angle outliers are listed below:

Mol	Chain	Res	Type	Atoms	Z	Observed(°)	Ideal(°)
4	A	401	GOL	O1-C1-C2	3.52	126.89	109.71
4	A	401	GOL	O2-C2-C1	2.87	121.31	108.22
4	A	401	GOL	O2-C2-C3	2.39	119.09	108.22

There are no chirality outliers.

There are no torsion outliers.

There are no ring outliers.

5.7 Other polymers ⓘ

There are no such residues in this entry.

5.8 Polymer linkage issues

There are no chain breaks in this entry.

6 Fit of model and data ⓘ

6.1 Protein, DNA and RNA chains ⓘ

EDS was not executed - this section will therefore be empty.

6.2 Non-standard residues in protein, DNA, RNA chains ⓘ

EDS was not executed - this section will therefore be empty.

6.3 Carbohydrates ⓘ

EDS was not executed - this section will therefore be empty.

6.4 Ligands ⓘ

EDS was not executed - this section will therefore be empty.

6.5 Other polymers ⓘ

EDS was not executed - this section will therefore be empty.