



# wwPDB X-ray Structure Validation Summary Report

Feb 28, 2014 – 03:05 PM GMT

PDB ID : 3S12  
Title : Crystal structure of H5N1 influenza virus hemagglutinin, strain YU562 crystal form 1  
Authors : DuBois, R.M.; Zaraket, H.; Reddivari, M.; Heath, R.J.; White, S.W.; Russell, C.J.  
Deposited on : 2011-05-14  
Resolution : 3.10 Å(reported)

This is a wwPDB validation summary report for a publicly released PDB entry.  
We welcome your comments at [validation@mail.wwpdb.org](mailto:validation@mail.wwpdb.org)  
A user guide is available at <http://wwpdb.org/ValidationPDFNotes.html>

---

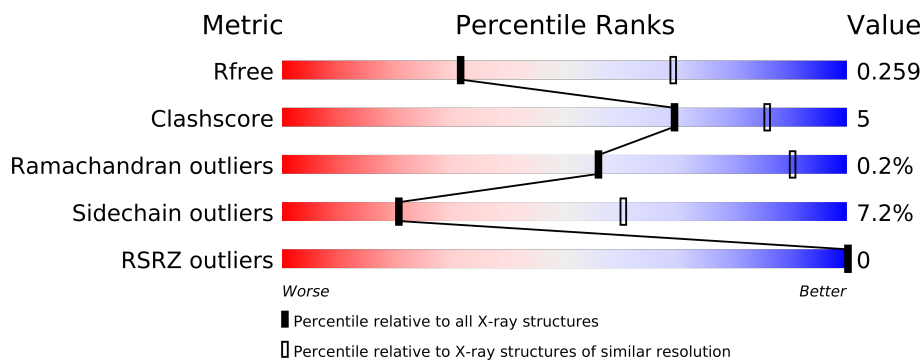
The following versions of software and data (see [references](#)) were used in the production of this report:

MolProbity : 4.02b-467  
Mogul : 1.15 2013  
Xtriage (Phenix) : dev-1323  
EDS : stable22639  
Percentile statistics : 21963  
Refmac : 5.8.0049  
CCP4 : 6.3.0 (Settle)  
Ideal geometry (proteins) : Engh & Huber (2001)  
Ideal geometry (DNA, RNA) : Parkinson et. al. (1996)  
Validation Pipeline (wwPDB-VP) : stable22683

# 1 Overall quality at a glance



The reported resolution of this entry is 3.10 Å.

Percentile scores (ranging between 0-100) for global validation metrics of the entry are shown in the following graphic. The table shows the number of entries on which the scores are based.



Metric	Whole archive (#Entries)	Similar resolution (#Entries, resolution range(Å))
$R_{free}$	66092	1007 (3.18-3.02)
Clashscore	79885	1078 (3.16-3.04)
Ramachandran outliers	78287	1044 (3.16-3.04)
Sidechain outliers	78261	1044 (3.16-3.04)
RSRZ outliers	66119	1008 (3.18-3.02)

The table below summarises the geometric issues observed across the polymeric chains and their fit to the electron density. The red, orange, yellow and green segments on the lower bar indicate the fraction of residues that contain outliers for  $\geq 3$ , 2, 1 and 0 types of geometric quality criteria. The upper red bar (where present) indicates the fraction of residues that have poor fit to the electron density.

Mol	Chain	Length	Quality of chain
1	A	336	
2	B	182	

## 2 Entry composition

There are 6 unique types of molecules in this entry. The entry contains 3860 atoms, of which 0 are hydrogen and 0 are deuterium.

In the tables below, the ZeroOcc column contains the number of atoms modelled with zero occupancy, the AltConf column contains the number of residues with at least one atom in alternate conformation and the Trace column contains the number of residues modelled with at most 2 atoms.

- Molecule 1 is a protein called Hemagglutinin HA1 chain.

Mol	Chain	Residues	Atoms					ZeroOcc	AltConf	Trace
1	A	318	Total	C	N	O	S	0	0	0
			2506	1581	433	477	15			

There are 13 discrepancies between the modelled and reference sequences:

Chain	Residue	Modelled	Actual	Comment	Reference
A	-2	ASP	-	EXPRESSION TAG	UNP Q80A30
A	-1	LEU	-	EXPRESSION TAG	UNP Q80A30
A	0	GLY	-	EXPRESSION TAG	UNP Q80A30
A	1	SER	-	EXPRESSION TAG	UNP Q80A30
A	2	MET	-	EXPRESSION TAG	UNP Q80A30
A	3	ALA	-	EXPRESSION TAG	UNP Q80A30
A	4	ASP	-	EXPRESSION TAG	UNP Q80A30
A	5	PRO	-	EXPRESSION TAG	UNP Q80A30
A	6	GLY	-	EXPRESSION TAG	UNP Q80A30
A	7	TYR	-	EXPRESSION TAG	UNP Q80A30
A	8	LEU	-	EXPRESSION TAG	UNP Q80A30
A	9	LEU	-	EXPRESSION TAG	UNP Q80A30
A	10	GLU	-	EXPRESSION TAG	UNP Q80A30

- Molecule 2 is a protein called Hemagglutinin HA2 chain.

Mol	Chain	Residues	Atoms					ZeroOcc	AltConf	Trace
2	B	158	Total	C	N	O	S	0	0	0
			1286	797	222	259	8			

There are 6 discrepancies between the modelled and reference sequences:

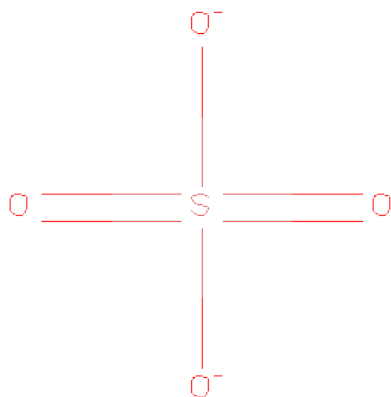
Chain	Residue	Modelled	Actual	Comment	Reference
B	177	ARG	-	EXPRESSION TAG	UNP Q80A30
B	178	SER	-	EXPRESSION TAG	UNP Q80A30
B	179	LEU	-	EXPRESSION TAG	UNP Q80A30

*Continued on next page...*

*Continued from previous page...*

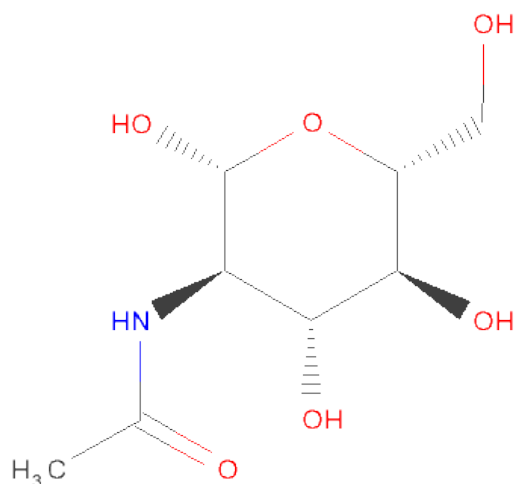
Chain	Residue	Modelled	Actual	Comment	Reference
B	180	VAL	-	EXPRESSION TAG	UNP Q80A30
B	181	PRO	-	EXPRESSION TAG	UNP Q80A30
B	182	ARG	-	EXPRESSION TAG	UNP Q80A30

- Molecule 3 is SULFATE ION (three-letter code: SO4) (formula: O<sub>4</sub>S).



Mol	Chain	Residues	Atoms			ZeroOcc	AltConf
3	A	1	Total	O	S	0	0
			5	4	1		
3	A	1	Total	O	S	0	0
			5	4	1		

- Molecule 4 is SUGAR (N-ACETYL-D-GLUCOSAMINE) (three-letter code: NAG) (formula: C<sub>8</sub>H<sub>15</sub>NO<sub>6</sub>).



Mol	Chain	Residues	Atoms				ZeroOcc	AltConf
4	A	1	Total	C	N	O	0	0
			14	8	1	5		

- Molecule 5 is a polymer of unknown type called SUGAR (2-MER).

Mol	Chain	Residues	Atoms				ZeroOcc	AltConf
5	A	2	Total	C	N	O	0	0
			28	16	2	10		

There are 13 discrepancies between the modelled and reference sequences:

Chain	Residue	Modelled	Actual	Comment	Reference
A	-2	ASP	-	EXPRESSION TAG	UNP Q80A30
A	-1	LEU	-	EXPRESSION TAG	UNP Q80A30
A	0	GLY	-	EXPRESSION TAG	UNP Q80A30
A	1	SER	-	EXPRESSION TAG	UNP Q80A30
A	2	MET	-	EXPRESSION TAG	UNP Q80A30
A	3	ALA	-	EXPRESSION TAG	UNP Q80A30
A	4	ASP	-	EXPRESSION TAG	UNP Q80A30
A	5	PRO	-	EXPRESSION TAG	UNP Q80A30
A	6	GLY	-	EXPRESSION TAG	UNP Q80A30
A	7	TYR	-	EXPRESSION TAG	UNP Q80A30
A	8	LEU	-	EXPRESSION TAG	UNP Q80A30
A	9	LEU	-	EXPRESSION TAG	UNP Q80A30
A	10	GLU	-	EXPRESSION TAG	UNP Q80A30

- Molecule 6 is water.

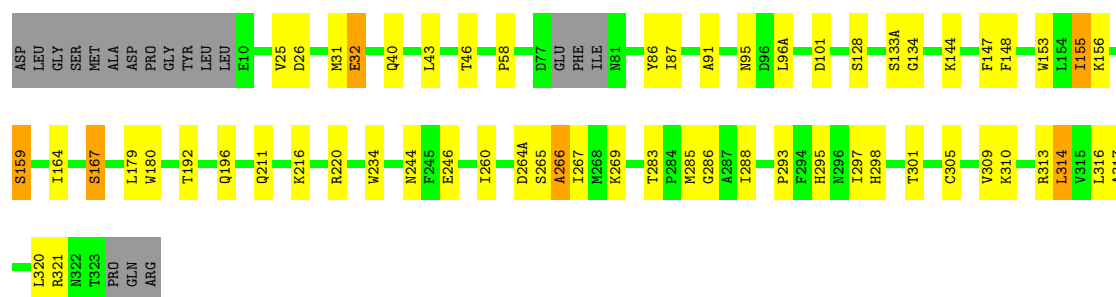
Mol	Chain	Residues	Atoms		ZeroOcc	AltConf
6	A	12	Total 12	O 12	0	0
6	B	4	Total 4	O 4	0	0

### 3 Residue-property plots

These plots are drawn for all protein, RNA and DNA chains in the entry. The first graphic for a chain summarises the proportions of errors displayed in the second graphic. The second graphic shows the sequence view annotated by issues in geometry and electron density. Residues are color-coded according to the number of geometric quality criteria for which they contain at least one outlier: green = 0, yellow = 1, orange = 2 and red = 3 or more. A red dot above a residue indicates a poor fit to the electron density ( $RSRZ > 2$ ). Stretches of 2 or more consecutive residues without any outlier are shown as a green connector. Residues present in the sample, but not in the model, are shown in grey.

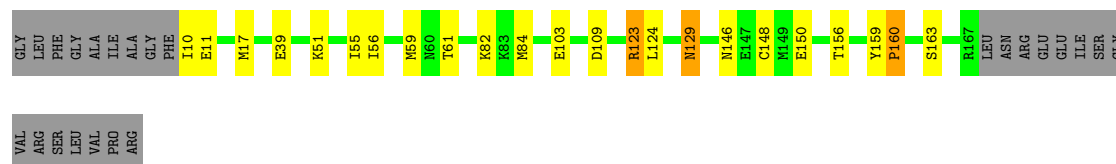
#### ● Molecule 1: Hemagglutinin HA1 chain

Chain A: 



#### ● Molecule 2: Hemagglutinin HA2 chain

Chain B: 



## 4 Data and refinement statistics

Property	Value	Source
Space group	P 3 2 1	Depositor
Cell constants a, b, c, $\alpha$ , $\beta$ , $\gamma$	112.55Å 112.55Å 134.69Å 90.00° 90.00° 120.00°	Depositor
Resolution (Å)	134.69 – 3.10 48.74 – 3.10	Depositor EDS
% Data completeness (in resolution range)	99.7 (134.69-3.10) 99.7 (48.74-3.10)	Depositor EDS
$R_{merge}$	0.15	Depositor
$R_{sym}$	(Not available)	Depositor
$\langle I/\sigma(I) \rangle$ <sup>1</sup>	4.72 (at 3.12Å)	Xtriage
Refinement program	REFMAC 5.5.0102	Depositor
R, $R_{free}$	0.217 , 0.264 0.216 , 0.259	Depositor DCC
$R_{free}$ test set	940 reflections (5.41%)	DCC
Wilson B-factor (Å <sup>2</sup> )	40.6	Xtriage
Anisotropy	0.134	Xtriage
Bulk solvent $k_{sol}$ (e/Å <sup>3</sup> ), $B_{sol}$ (Å <sup>2</sup> )	0.32 , -1.6	EDS
Estimated twinning fraction	0.019 for -h,-k,l	Xtriage
L-test for twinning	$\langle  L  \rangle = 0.50$ , $\langle L^2 \rangle = 0.33$	Xtriage
Outliers	1 of 18331 reflections (0.005%)	Xtriage
$F_o, F_c$ correlation	0.89	EDS
Total number of atoms	3860	wwPDB-VP
Average B, all atoms (Å <sup>2</sup> )	37.0	wwPDB-VP

Xtriage's analysis on translational NCS is as follows: *The largest off-origin peak in the Patterson function is 4.14% of the height of the origin peak. No significant pseudotranslation is detected.*

<sup>1</sup>Intensities estimated from amplitudes.



## 5 Model quality

### 5.1 Standard geometry

Bond lengths and bond angles in the following residue types are not validated in this section: NAG, SO4

The Z score for a bond length (or angle) is the number of standard deviations the observed value is removed from the expected value. A bond length (or angle) with  $|Z| > 5$  is considered an outlier worth inspection. RMSZ is the root-mean-square of all Z scores of the bond lengths (or angles).

Mol	Chain	Bond lengths		Bond angles	
		RMSZ	$\# Z  > 5$	RMSZ	$\# Z  > 5$
1	A	0.39	0/2565	0.57	1/3482 (0.0%)
2	B	0.41	0/1311	0.54	0/1764
All	All	0.39	0/3876	0.56	1/5246 (0.0%)

There are no bond length outliers.

All (1) bond angle outliers are listed below:

Mol	Chain	Res	Type	Atoms	Z	Observed(°)	Ideal(°)
1	A	266	ALA	N-CA-CB	-5.19	102.84	110.10

There are no chirality outliers.

There are no planarity outliers.

### 5.2 Close contacts

In the following table, the Non-H and H(model) columns list the number of non-hydrogen atoms and hydrogen atoms in the chain respectively. The H(added) column lists the number of hydrogens added by MolProbity. The Clashes column lists the number of clashes within the asymmetric unit, and the number in parentheses is this value normalized per 1000 atoms of the molecule in the chain. The Symm-Clashes column gives symmetry related clashes, in the same way as for the Clashes column.

Mol	Chain	Non-H	H(model)	H(added)	Clashes	Symm-Clashes
1	A	2506	0	2445	27	0
2	B	1286	0	1186	11	0
3	A	10	0	0	0	0
4	A	14	0	13	0	0
5	A	28	0	25	0	0
6	A	12	0	0	0	0

*Continued on next page...*

*Continued from previous page...*

Mol	Chain	Non-H	H(model)	H(added)	Clashes	Symm-Clashes
6	B	4	0	0	0	0
All	All	3860	0	3669	35	0

Clashscore is defined as the number of clashes calculated for the entry per 1000 atoms (including hydrogens) of the entry. The overall clashscore for this entry is 5.

The worst 5 of 35 close contacts within the same asymmetric unit are listed below.

Atom-1	Atom-2	Distance(Å)	Clash(Å)
1:A:283:THR:HG22	1:A:285:MET:H	1.30	0.92
1:A:283:THR:HB	1:A:286:GLY:O	1.81	0.80
1:A:265:SER:OG	1:A:266:ALA:N	2.22	0.71
1:A:32:GLU:OE1	1:A:321:ARG:NH2	2.24	0.70
2:B:10:ILE:HG22	2:B:11:GLU:H	1.57	0.69

There are no symmetry-related clashes.

## 5.3 Torsion angles

### 5.3.1 Protein backbone ⓘ

In the following table, the Percentiles column shows the percent Ramachandran outliers of the chain as a percentile score with respect to all X-ray entries followed by that with respect to entries of similar resolution. The Analysed column shows the number of residues for which the backbone conformation was analysed, and the total number of residues.

Mol	Chain	Analysed	Favoured	Allowed	Outliers	Percentiles	
1	A	314/336 (94%)	292 (93%)	22 (7%)	0	100	100
2	B	156/182 (86%)	146 (94%)	9 (6%)	1 (1%)	33	78
All	All	470/518 (91%)	438 (93%)	31 (7%)	1 (0%)	56	90

All (1) Ramachandran outliers are listed below:

Mol	Chain	Res	Type
2	B	160	PRO

### 5.3.2 Protein sidechains ⓘ

In the following table, the Percentiles column shows the percent sidechain outliers of the chain as a percentile score with respect to all X-ray entries followed by that with respect to entries of

similar resolution. The Analysed column shows the number of residues for which the sidechain conformation was analysed, and the total number of residues.

Mol	Chain	Analysed	Rotameric	Outliers	Percentiles	
1	A	282/298 (95%)	262 (93%)	20 (7%)	21	61
2	B	137/156 (88%)	127 (93%)	10 (7%)	20	59
All	All	419/454 (92%)	389 (93%)	30 (7%)	21	60

5 of 30 residues with a non-rotameric sidechain are listed below:

Mol	Chain	Res	Type
1	A	260	ILE
1	A	310	LYS
2	B	148	CYS
1	A	309	VAL
1	A	313	ARG

Some sidechains can be flipped to improve hydrogen bonding and reduce clashes. 5 of 11 such sidechains are listed below:

Mol	Chain	Res	Type
1	A	224	ASN
1	A	240	ASN
2	B	117	ASN
1	A	211	GLN
2	B	95	ASN

### 5.3.3 RNA ⓘ

There are no RNA chains in this entry.

## 5.4 Non-standard residues in protein, DNA, RNA chains ⓘ

There are no non-standard protein/DNA/RNA residues in this entry.

## 5.5 Carbohydrates ⓘ

2 carbohydrates are modelled in this entry.

In the following table, the Counts columns list the number of bonds (or angles) for which Mogul statistics could be retrieved, the number of bonds (or angles) that are observed in the model and the number of bonds (or angles) that are defined in the chemical component dictionary. The Link

column lists molecule types, if any, to which the group is linked. The Z score for a bond length (or angle) is the number of standard deviations the observed value is removed from the expected value. A bond length (or angle) with  $|Z| > 2$  is considered an outlier worth inspection. RMSZ is the root-mean-square of all Z scores of the bond lengths (or angles).

Mol	Type	Chain	Res	Link	Bond lengths			Bond angles		
					Counts	RMSZ	# $ Z  > 2$	Counts	RMSZ	# $ Z  > 2$
5	NAG	A	330	1,5	12,14,15	0.76	0	15,19,21	1.28	1 (6%)
5	NAG	A	331	5	12,14,15	0.57	0	15,19,21	1.22	2 (13%)

In the following table, the Chirals column lists the number of chiral outliers, the number of chiral centers analysed, the number of these observed in the model and the number defined in the chemical component dictionary. Similar counts are reported in the Torsion and Rings columns. '-' means no outliers of that kind were identified.

Mol	Type	Chain	Res	Link	Chirals	Torsions	Rings
5	NAG	A	330	1,5	-	0/6/23/26	0/1/1/1
5	NAG	A	331	5	-	0/6/23/26	0/1/1/1

There are no bond length outliers.

All (3) bond angle outliers are listed below:

Mol	Chain	Res	Type	Atoms	Z	Observed(°)	Ideal(°)
5	A	330	NAG	C3-C2-N2	-3.72	106.09	111.76
5	A	331	NAG	O5-C5-C6	2.45	109.55	106.98
5	A	331	NAG	C3-C4-C5	2.44	114.55	110.20

There are no chirality outliers.

There are no torsion outliers.

There are no ring outliers.

## 5.6 Ligand geometry

3 ligands are modelled in this entry.

In the following table, the Counts columns list the number of bonds (or angles) for which Mogul statistics could be retrieved, the number of bonds (or angles) that are observed in the model and the number of bonds (or angles) that are defined in the chemical component dictionary. The Link column lists molecule types, if any, to which the group is linked. The Z score for a bond length (or angle) is the number of standard deviations the observed value is removed from the expected value. A bond length (or angle) with  $|Z| > 2$  is considered an outlier worth inspection. RMSZ is the root-mean-square of all Z scores of the bond lengths (or angles).

Mol	Type	Chain	Res	Link	Bond lengths			Bond angles		
					Counts	RMSZ	# Z  > 2	Counts	RMSZ	# Z  > 2
3	SO4	A	327	-	4,4,4	0.26	0	6,6,6	0.34	0
3	SO4	A	328	-	4,4,4	0.23	0	6,6,6	0.19	0
4	NAG	A	329	1	12,14,15	0.61	0	15,19,21	1.45	2 (13%)

In the following table, the Chirals column lists the number of chiral outliers, the number of chiral centers analysed, the number of these observed in the model and the number defined in the chemical component dictionary. Similar counts are reported in the Torsion and Rings columns. '-' means no outliers of that kind were identified.

Mol	Type	Chain	Res	Link	Chirals	Torsions	Rings
3	SO4	A	327	-	-	0/0/0/0	0/0/0/0
3	SO4	A	328	-	-	0/0/0/0	0/0/0/0
4	NAG	A	329	1	-	0/6/23/26	0/1/1/1

There are no bond length outliers.

All (2) bond angle outliers are listed below:

Mol	Chain	Res	Type	Atoms	Z	Observed(°)	Ideal(°)
4	A	329	NAG	O5-C5-C6	3.93	111.11	106.98
4	A	329	NAG	C3-C2-N2	-3.05	107.11	111.76

There are no chirality outliers.

There are no torsion outliers.

There are no ring outliers.

## 5.7 Other polymers ⓘ

There are no such residues in this entry.

## 5.8 Polymer linkage issues

There are no chain breaks in this entry.

## 6 Fit of model and data ⓘ

### 6.1 Protein, DNA and RNA chains ⓘ

In the following table, the column labelled ‘#RSRZ> 2’ contains the number (and percentage) of RSRZ outliers, followed by percent RSRZ outliers for the chain as percentile scores relative to all X-ray entries and entries of similar resolution. The OWAB column contains the minimum, median, 95<sup>th</sup> percentile and maximum values of the occupancy-weighted average B-factor per residue. The column labelled ‘Q< 0.9’ lists the number of (and percentage) of residues with an average occupancy less than 0.9.

Mol	Chain	Analysed	<RSRZ>	#RSRZ>2	OWAB(Å <sup>2</sup> )	Q<0.9
1	A	318/336 (94%)	-0.24	0 100 100	13, 28, 47, 53	0
2	B	158/182 (86%)	0.01	0 100 100	23, 48, 92, 100	0
All	All	476/518 (91%)	-0.15	0 100 100	13, 34, 72, 100	0

There are no RSRZ outliers to report.

### 6.2 Non-standard residues in protein, DNA, RNA chains ⓘ

There are no non-standard protein/DNA/RNA residues in this entry.

### 6.3 Carbohydrates ⓘ

In the following table, the Atoms column lists the number of modelled atoms in the group and the number defined in the chemical component dictionary. LLDF column lists the quality of electron density of the group with respect to its neighbouring residues in protein, DNA or RNA chains. The B-factors column lists the minimum, median, 95<sup>th</sup> percentile and maximum values of B factors of atoms in the group. The column labelled ‘Q< 0.9’ lists the number of atoms with occupancy less than 0.9.

Mol	Type	Chain	Res	Atoms	RSR	LLDF	B-factors(Å <sup>2</sup> )	Q<0.9
5	NAG	A	331	14/15	0.41	-	58,61,62,62	0
5	NAG	A	330	14/15	0.25	-	44,46,50,54	0

### 6.4 Ligands ⓘ

In the following table, the Atoms column lists the number of modelled atoms in the group and the number defined in the chemical component dictionary. LLDF column lists the quality of electron density of the group with respect to its neighbouring residues in protein, DNA or RNA chains. The B-factors column lists the minimum, median, 95<sup>th</sup> percentile and maximum values of B factors

of atoms in the group. The column labelled 'Q < 0.9' lists the number of atoms with occupancy less than 0.9.

Mol	Type	Chain	Res	Atoms	RSR	LLDF	B-factors( $\text{\AA}^2$ )	Q<0.9
4	NAG	A	329	14/15	0.32	-	61,64,65,65	0
3	SO4	A	328	5/5	0.10	-	37,37,38,38	0
3	SO4	A	327	5/5	0.17	-	42,42,42,42	0

## 6.5 Other polymers

There are no such residues in this entry.