



# wwPDB X-ray Structure Validation Summary Report

Feb 28, 2014 – 03:08 PM GMT

PDB ID : 3S1Q  
Title : RNA Polymerase II Initiation Complex with a 5-nt 3'-deoxy RNA soaked with ATP  
Authors : Liu, X.; Bushnell, D.A.; Silva, D.A.; Huang, X.; Kornberg, R.D.  
Deposited on : 2011-05-16  
Resolution : 3.30 Å(reported)

This is a wwPDB validation summary report for a publicly released PDB entry.

We welcome your comments at [validation@mail.wwpdb.org](mailto:validation@mail.wwpdb.org)

A user guide is available at <http://wwpdb.org/ValidationPDFNotes.html>

---

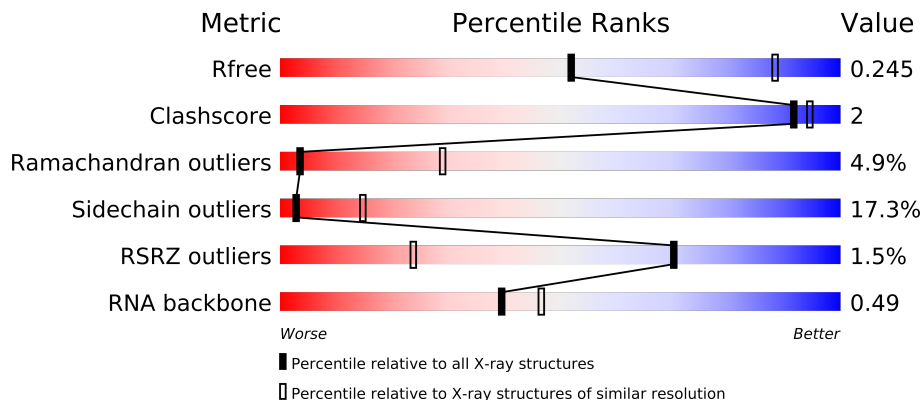
The following versions of software and data (see [references](#)) were used in the production of this report:

MolProbity	:	4.02b-467
Mogul	:	1.15 2013
Xtriage (Phenix)	:	dev-1323
EDS	:	stable22639
Percentile statistics	:	21963
Refmac	:	5.8.0049
CCP4	:	6.3.0 (Settle)
Ideal geometry (proteins)	:	Engh & Huber (2001)
Ideal geometry (DNA, RNA)	:	Parkinson et. al. (1996)
Validation Pipeline (wwPDB-VP)	:	stable22683

# 1 Overall quality at a glance

The reported resolution of this entry is 3.30 Å.

Percentile scores (ranging between 0-100) for global validation metrics of the entry are shown in the following graphic. The table shows the number of entries on which the scores are based.



Metric	Whole archive (#Entries)	Similar resolution (#Entries, resolution range(Å))
$R_{free}$	66092	1341 (3.40-3.20)
Clashscore	79885	1696 (3.40-3.20)
Ramachandran outliers	78287	1664 (3.40-3.20)
Sidechain outliers	78261	1662 (3.40-3.20)
RSRZ outliers	66119	1342 (3.40-3.20)
RNA backbone	1838	1042 (3.90-2.70)

The table below summarises the geometric issues observed across the polymeric chains and their fit to the electron density. The red, orange, yellow and green segments on the lower bar indicate the fraction of residues that contain outliers for  $\geq 3$ , 2, 1 and 0 types of geometric quality criteria. The upper red bar (where present) indicates the fraction of residues that have poor fit to the electron density.

Mol	Chain	Length	Quality of chain
1	A	1733	
2	B	1224	
3	C	318	
4	E	215	
5	F	155	
6	H	146	
7	I	122	
8	J	70	
9	K	120	
10	L	70	
11	R	5	
12	T	29	

## 2 Entry composition

There are 15 unique types of molecules in this entry. The entry contains 28703 atoms, of which 0 are hydrogen and 0 are deuterium.

In the tables below, the ZeroOcc column contains the number of atoms modelled with zero occupancy, the AltConf column contains the number of residues with at least one atom in alternate conformation and the Trace column contains the number of residues modelled with at most 2 atoms.

- Molecule 1 is a protein called DNA-directed RNA polymerase II subunit RPB1.

Mol	Chain	Residues	Atoms					ZeroOcc	AltConf	Trace
1	A	1405	Total	C	N	O	S	0	0	0
			11043	6965	1936	2081	61			

- Molecule 2 is a protein called DNA-directed RNA polymerase II subunit RPB2.

Mol	Chain	Residues	Atoms					ZeroOcc	AltConf	Trace
2	B	1114	Total	C	N	O	S	0	0	0
			8861	5610	1549	1647	55			

- Molecule 3 is a protein called DNA-directed RNA polymerase II subunit RPB3.

Mol	Chain	Residues	Atoms					ZeroOcc	AltConf	Trace
3	C	266	Total	C	N	O	S	0	0	0
			2095	1317	348	417	13			

- Molecule 4 is a protein called DNA-directed RNA polymerases I, II, and III subunit RPABC1.

Mol	Chain	Residues	Atoms					ZeroOcc	AltConf	Trace
4	E	214	Total	C	N	O	S	0	0	0
			1752	1111	309	321	11			

- Molecule 5 is a protein called DNA-directed RNA polymerases I, II, and III subunit RPABC2.

Mol	Chain	Residues	Atoms					ZeroOcc	AltConf	Trace
5	F	85	Total	C	N	O	S	0	0	0
			688	439	116	130	3			

- Molecule 6 is a protein called DNA-directed RNA polymerases I, II, and III subunit RPABC3.

Mol	Chain	Residues	Atoms					ZeroOcc	AltConf	Trace
6	H	133	Total	C	N	O	S	0	0	0
			1068	673	180	211	4			

- Molecule 7 is a protein called DNA-directed RNA polymerase II subunit RPB9.

Mol	Chain	Residues	Atoms					ZeroOcc	AltConf	Trace
7	I	119	Total	C	N	O	S	0	0	0
			971	596	179	186	10			

- Molecule 8 is a protein called DNA-directed RNA polymerases I, II, and III subunit RPABC5.

Mol	Chain	Residues	Atoms					ZeroOcc	AltConf	Trace
8	J	65	Total	C	N	O	S	0	0	0
			532	339	93	94	6			

- Molecule 9 is a protein called DNA-directed RNA polymerase II subunit RPB11.

Mol	Chain	Residues	Atoms					ZeroOcc	AltConf	Trace
9	K	114	Total	C	N	O	S	0	0	0
			919	590	156	171	2			

- Molecule 10 is a protein called DNA-directed RNA polymerases I, II, and III subunit RPABC4.

Mol	Chain	Residues	Atoms					ZeroOcc	AltConf	Trace
10	L	46	Total	C	N	O	S	0	0	0
			363	224	72	63	4			

- Molecule 11 is a RNA chain called RNA (5'-R(\*AP\*GP\*AP\*GP\*G)-3').

Mol	Chain	Residues	Atoms					ZeroOcc	AltConf	Trace
11	R	5	Total	C	N	O	P	0	0	0
			109	50	25	30	4			

- Molecule 12 is a DNA chain called DNA (5'-D(\*CP\*TP\*AP\*CP\*CP\*GP\*AP\*TP\*AP\*AP\*GP\*CP\*AP\*GP\*AP\*CP\*GP\*AP\*TP\*CP\*CP\*TP\*CP\*TP\*CP\*GP\*AP\*TP\*G)-3').

Mol	Chain	Residues	Atoms					ZeroOcc	AltConf	Trace
12	T	13	Total	C	N	O	P	0	0	0
			261	125	43	80	13			

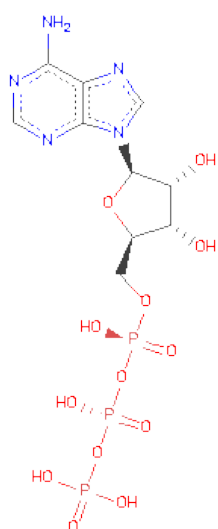
- Molecule 13 is MAGNESIUM ION (three-letter code: MG) (formula: Mg).

Mol	Chain	Residues	Atoms		ZeroOcc	AltConf
13	A	2	Total	Mg	0	0
			2	2		

- Molecule 14 is ZINC ION (three-letter code: ZN) (formula: Zn).

Mol	Chain	Residues	Atoms		ZeroOcc	AltConf
14	J	1	Total	Zn	0	0
			1	1		
14	B	1	Total	Zn	0	0
			1	1		
14	I	2	Total	Zn	0	0
			2	2		
14	C	1	Total	Zn	0	0
			1	1		
14	A	2	Total	Zn	0	0
			2	2		
14	L	1	Total	Zn	0	0
			1	1		

- Molecule 15 is ADENOSINE-5'-TRIPHOSPHATE (three-letter code: ATP) (formula: C<sub>10</sub>H<sub>16</sub>N<sub>5</sub>O<sub>13</sub>P<sub>3</sub>).



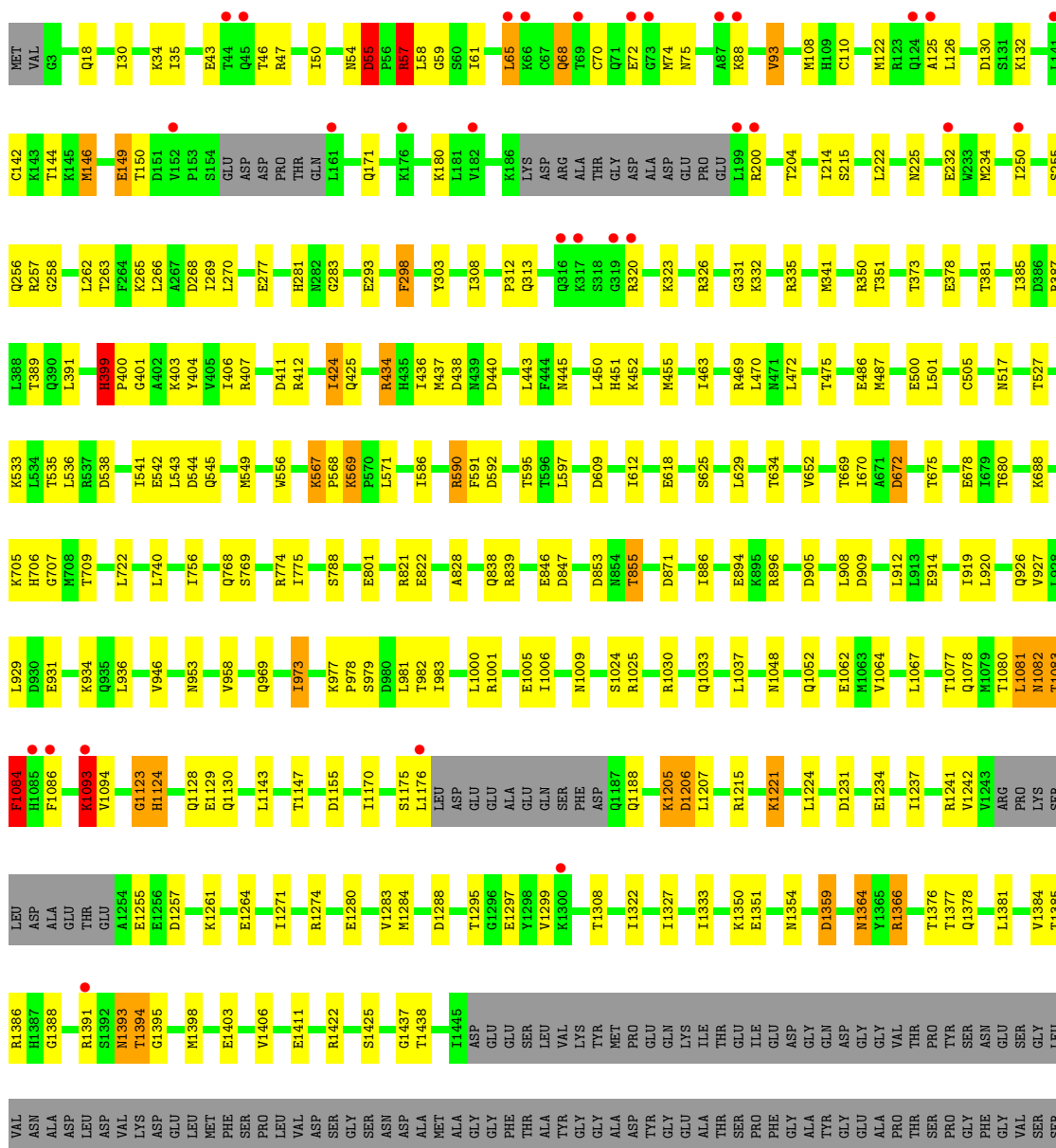
Mol	Chain	Residues	Atoms					ZeroOcc	AltConf
15	A	1	Total	C	N	O	P	0	0
			31	10	5	13	3		

### 3 Residue-property plots

These plots are drawn for all protein, RNA and DNA chains in the entry. The first graphic for a chain summarises the proportions of errors displayed in the second graphic. The second graphic shows the sequence view annotated by issues in geometry and electron density. Residues are color-coded according to the number of geometric quality criteria for which they contain at least one outlier: green = 0, yellow = 1, orange = 2 and red = 3 or more. A red dot above a residue indicates a poor fit to the electron density ( $RSRZ > 2$ ). Stretches of 2 or more consecutive residues without any outlier are shown as a green connector. Residues present in the sample, but not in the model, are shown in grey.

- Molecule 1: DNA-directed RNA polymerase II subunit RPB1

Chain A: 





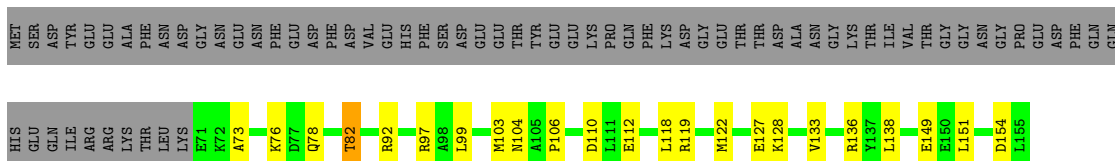
- Molecule 4: DNA-directed RNA polymerases I, II, and III subunit RPABC1

Chain E:



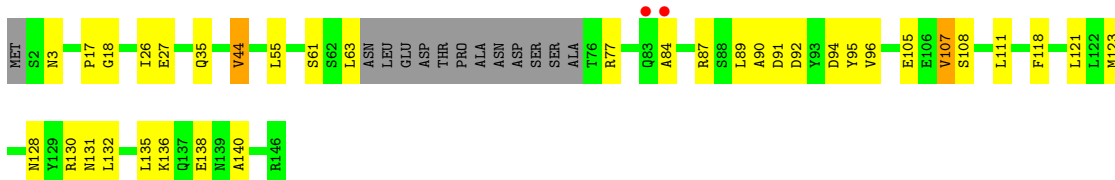
- Molecule 5: DNA-directed RNA polymerases I, II, and III subunit RPABC2

Chain F:



- Molecule 6: DNA-directed RNA polymerases I, II, and III subunit RPABC3

Chain H:



- Molecule 7: DNA-directed RNA polymerase II subunit RPB9

Chain I:



- Molecule 8: DNA-directed RNA polymerases I, II, and III subunit RPABC5

Chain J:



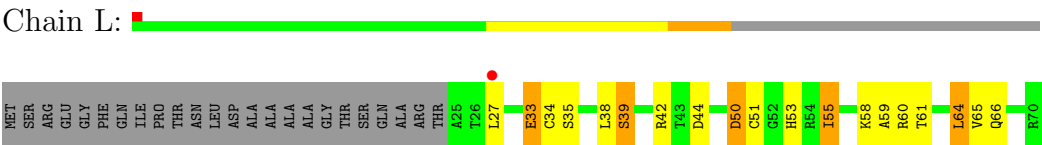
- Molecule 9: DNA-directed RNA polymerase II subunit RPB11

Chain K:



- Molecule 10: DNA-directed RNA polymerases I, II, and III subunit RPABC4



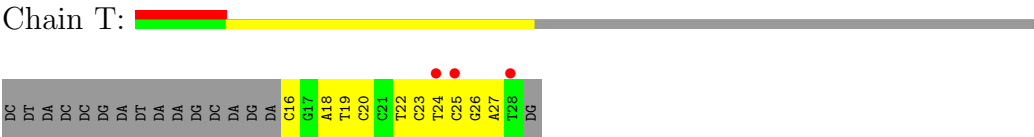


● Molecule 11: RNA (5'-R(\*AP\*GP\*AP\*GP\*G)-3')



There are no outlier residues recorded for this chain.

● Molecule 12: DNA (5'-D(\*CP\*TP\*AP\*CP\*CP\*GP\*AP\*TP\*AP\*AP\*GP\*CP\*AP\*GP\*AP\*CP\*GP\*AP\*TP\*CP\*CP\*TP\*CP\*TP\*CP\*GP\*AP\*TP\*G)-3')



## 4 Data and refinement statistics

Property	Value	Source
Space group	C 1 2 1	Depositor
Cell constants a, b, c, $\alpha$ , $\beta$ , $\gamma$	161.94Å 220.53Å 193.72Å 90.00° 98.48° 90.00°	Depositor
Resolution (Å)	29.67 – 3.30 29.67 – 3.30	Depositor EDS
% Data completeness (in resolution range)	(Not available) (29.67-3.30) 99.3 (29.67-3.30)	Depositor EDS
$R_{merge}$	0.12	Depositor
$R_{sym}$	(Not available)	Depositor
$\langle I/\sigma(I) \rangle$ <sup>1</sup>	1.63 (at 3.31Å)	Xtriage
Refinement program	BUSTER 2.8.0	Depositor
R, $R_{free}$	0.176 , 0.229 0.194 , 0.245	Depositor DCC
$R_{free}$ test set	4990 reflections (5.00%)	DCC
Wilson B-factor (Å <sup>2</sup> )	97.3	Xtriage
Anisotropy	0.589	Xtriage
Bulk solvent $k_{sol}$ (e/Å <sup>3</sup> ), $B_{sol}$ (Å <sup>2</sup> )	0.30 , 110.3	EDS
Estimated twinning fraction	No twinning to report.	Xtriage
L-test for twinning	$\langle  L  \rangle = 0.47$ , $\langle L^2 \rangle = 0.30$	Xtriage
Outliers	0 of 99956 reflections	Xtriage
$F_o, F_c$ correlation	0.95	EDS
Total number of atoms	28703	wwPDB-VP
Average B, all atoms (Å <sup>2</sup> )	136.0	wwPDB-VP

Xtriage's analysis on translational NCS is as follows: *The largest off-origin peak in the Patterson function is 2.80% of the height of the origin peak. No significant pseudotranslation is detected.*

<sup>1</sup>Intensities estimated from amplitudes.

## 5 Model quality ⓘ

### 5.1 Standard geometry ⓘ

Bond lengths and bond angles in the following residue types are not validated in this section: ZN, MG, ATP

The Z score for a bond length (or angle) is the number of standard deviations the observed value is removed from the expected value. A bond length (or angle) with  $|Z| > 5$  is considered an outlier worth inspection. RMSZ is the root-mean-square of all Z scores of the bond lengths (or angles).

Mol	Chain	Bond lengths		Bond angles	
		RMSZ	$\# Z  > 5$	RMSZ	$\# Z  > 5$
1	A	0.51	0/11241	0.83	6/15199 (0.0%)
2	B	0.54	0/9033	0.83	3/12181 (0.0%)
3	C	0.49	0/2133	0.84	1/2891 (0.0%)
4	E	0.46	0/1788	0.72	0/2406
5	F	0.49	0/700	0.74	0/945
6	H	0.49	0/1086	0.82	0/1470
7	I	0.50	0/989	0.81	0/1331
8	J	0.59	0/541	0.93	0/727
9	K	0.46	0/937	0.74	0/1265
10	L	0.58	0/365	1.05	0/485
11	R	0.93	0/123	1.42	0/191
12	T	1.14	0/290	2.13	17/444 (3.8%)
All	All	0.53	0/29226	0.85	27/39535 (0.1%)

There are no bond length outliers.

The worst 5 of 27 bond angle outliers are listed below:

Mol	Chain	Res	Type	Atoms	Z	Observed(°)	Ideal(°)
12	T	16	DC	P-O3'-C3'	10.52	132.32	119.70
12	T	25	DC	O4'-C1'-N1	9.54	114.68	108.00
12	T	23	DC	O4'-C1'-N1	8.20	113.74	108.00
12	T	22	DT	C4'-C3'-C2'	-8.13	95.78	103.10
12	T	24	DT	O4'-C1'-N1	8.12	113.69	108.00

There are no chirality outliers.

There are no planarity outliers.

## 5.2 Close contacts ⓘ

In the following table, the Non-H and H(model) columns list the number of non-hydrogen atoms and hydrogen atoms in the chain respectively. The H(added) column lists the number of hydrogens added by MolProbity. The Clashes column lists the number of clashes within the asymmetric unit, and the number in parentheses is this value normalized per 1000 atoms of the molecule in the chain. The Symm-Clashes column gives symmetry related clashes, in the same way as for the Clashes column.

Mol	Chain	Non-H	H(model)	H(added)	Clashes	Symm-Clashes
1	A	11043	0	23	19	0
2	B	8861	0	0	16	0
3	C	2095	0	0	7	0
4	E	1752	0	0	0	0
5	F	688	0	5	3	0
6	H	1068	0	0	2	0
7	I	971	0	0	3	0
8	J	532	0	0	4	0
9	K	919	0	0	3	0
10	L	363	0	0	1	0
11	R	109	0	0	0	0
12	T	261	0	0	0	0
13	A	2	0	0	0	0
14	A	2	0	0	0	0
14	B	1	0	0	0	0
14	C	1	0	0	0	0
14	I	2	0	0	0	0
14	J	1	0	0	0	0
14	L	1	0	0	0	0
15	A	31	0	0	1	0
All	All	28703	0	28	52	0

Clashscore is defined as the number of clashes calculated for the entry per 1000 atoms (including hydrogens) of the entry. The overall clashscore for this entry is 2.

The worst 5 of 52 close contacts within the same asymmetric unit are listed below.

Atom-1	Atom-2	Distance(Å)	Clash(Å)
2:B:744:HIS:CD2	2:B:746:SER:OG	2.41	0.73
1:A:469:ARG:NH2	2:B:991:GLY:O	2.27	0.68
1:A:399:HIS:O	1:A:401:GLY:N	2.30	0.64
1:A:55:ASP:O	1:A:57:ARG:N	2.32	0.62
1:A:1083:THR:N	1:A:1084:PHE:O	2.33	0.61

There are no symmetry-related clashes.

## 5.3 Torsion angles

### 5.3.1 Protein backbone ⓘ

In the following table, the Percentiles column shows the percent Ramachandran outliers of the chain as a percentile score with respect to all X-ray entries followed by that with respect to entries of similar resolution. The Analysed column shows the number of residues for which the backbone conformation was analysed, and the total number of residues.

Mol	Chain	Analysed	Favoured	Allowed	Outliers	Percentiles	
1	A	1395/1733 (80%)	1177 (84%)	149 (11%)	69 (5%)	3	29
2	B	1096/1224 (90%)	927 (85%)	110 (10%)	59 (5%)	3	26
3	C	264/318 (83%)	235 (89%)	19 (7%)	10 (4%)	5	37
4	E	212/215 (99%)	199 (94%)	11 (5%)	2 (1%)	25	76
5	F	83/155 (54%)	73 (88%)	7 (8%)	3 (4%)	5	40
6	H	129/146 (88%)	93 (72%)	24 (19%)	12 (9%)	1	9
7	I	117/122 (96%)	103 (88%)	10 (8%)	4 (3%)	6	42
8	J	63/70 (90%)	55 (87%)	6 (10%)	2 (3%)	6	43
9	K	112/120 (93%)	101 (90%)	8 (7%)	3 (3%)	8	49
10	L	44/70 (63%)	28 (64%)	7 (16%)	9 (20%)	0	1
All	All	3515/4173 (84%)	2991 (85%)	351 (10%)	173 (5%)	3	29

5 of 173 Ramachandran outliers are listed below:

Mol	Chain	Res	Type
1	A	68	GLN
1	A	215	SER
1	A	250	ILE
1	A	312	PRO
1	A	556	TRP

### 5.3.2 Protein sidechains ⓘ

In the following table, the Percentiles column shows the percent sidechain outliers of the chain as a percentile score with respect to all X-ray entries followed by that with respect to entries of similar resolution. The Analysed column shows the number of residues for which the sidechain conformation was analysed, and the total number of residues.

Mol	Chain	Analysed	Rotameric	Outliers	Percentiles	
1	A	1225/1520 (81%)	1008 (82%)	217 (18%)	3	13

*Continued on next page...*

Continued from previous page...

Mol	Chain	Analysed	Rotameric	Outliers	Percentiles	
2	B	967/1061 (91%)	811 (84%)	156 (16%)	3	17
3	C	234/274 (85%)	191 (82%)	43 (18%)	2	12
4	E	196/197 (100%)	173 (88%)	23 (12%)	8	35
5	F	75/137 (55%)	60 (80%)	15 (20%)	2	9
6	H	117/128 (91%)	96 (82%)	21 (18%)	2	13
7	I	113/116 (97%)	91 (80%)	22 (20%)	2	9
8	J	60/65 (92%)	46 (77%)	14 (23%)	1	5
9	K	99/102 (97%)	83 (84%)	16 (16%)	3	17
10	L	40/57 (70%)	26 (65%)	14 (35%)	0	1
All	All	3126/3657 (86%)	2585 (83%)	541 (17%)	3	15

5 of 541 residues with a non-rotameric sidechain are listed below:

Mol	Chain	Res	Type
2	B	273	LEU
2	B	743	ILE
8	J	9	SER
2	B	322	PHE
2	B	469	GLN

Some sidechains can be flipped to improve hydrogen bonding and reduce clashes. There are no such sidechains identified.

### 5.3.3 RNA ⓘ

Mol	Chain	Analysed	Backbone Outliers	Pucker Outliers
11	R	3/5 (60%)	0	0

There are no RNA backbone outliers to report.

There are no RNA pucker outliers to report.

## 5.4 Non-standard residues in protein, DNA, RNA chains ⓘ

There are no non-standard protein/DNA/RNA residues in this entry.

## 5.5 Carbohydrates ⓘ

There are no carbohydrates in this entry.

## 5.6 Ligand geometry ⓘ

Of 11 ligands modelled in this entry, 10 are monoatomic - leaving 1 for Mogul analysis.

In the following table, the Counts columns list the number of bonds (or angles) for which Mogul statistics could be retrieved, the number of bonds (or angles) that are observed in the model and the number of bonds (or angles) that are defined in the chemical component dictionary. The Link column lists molecule types, if any, to which the group is linked. The Z score for a bond length (or angle) is the number of standard deviations the observed value is removed from the expected value. A bond length (or angle) with  $|Z| > 2$  is considered an outlier worth inspection. RMSZ is the root-mean-square of all Z scores of the bond lengths (or angles).

Mol	Type	Chain	Res	Link	Bond lengths			Bond angles		
					Counts	RMSZ	$\# Z  > 2$	Counts	RMSZ	$\# Z  > 2$
15	ATP	A	1736	13	33,33,33	1.23	4 (12%)	52,52,52	1.66	11 (21%)

In the following table, the Chirals column lists the number of chiral outliers, the number of chiral centers analysed, the number of these observed in the model and the number defined in the chemical component dictionary. Similar counts are reported in the Torsion and Rings columns. '-' means no outliers of that kind were identified.

Mol	Type	Chain	Res	Link	Chirals	Torsions	Rings
15	ATP	A	1736	13	-	0/22/38/38	0/1/3/3

All (4) bond length outliers are listed below:

Mol	Chain	Res	Type	Atoms	Z	Observed(Å)	Ideal(Å)
15	A	1736	ATP	C2-N3	2.80	1.37	1.32
15	A	1736	ATP	C2-N1	2.20	1.38	1.33
15	A	1736	ATP	C8-N9	2.05	1.39	1.36
15	A	1736	ATP	PB-O1B	2.01	1.59	1.51

The worst 5 of 11 bond angle outliers are listed below:

Mol	Chain	Res	Type	Atoms	Z	Observed(°)	Ideal(°)
15	A	1736	ATP	O4'-C1'-N9	6.22	114.22	108.44
15	A	1736	ATP	O3'-C3'-C2'	3.26	122.43	111.83
15	A	1736	ATP	C8-N9-C1'	3.04	132.37	126.38
15	A	1736	ATP	C8-N9-C4	-3.01	104.60	106.90
15	A	1736	ATP	O4'-C1'-C2'	-2.99	102.18	106.77

There are no chirality outliers.

There are no torsion outliers.

There are no ring outliers.

## 5.7 Other polymers ⓘ

There are no such residues in this entry.

## 5.8 Polymer linkage issues

There are no chain breaks in this entry.



## 6 Fit of model and data ⓘ

### 6.1 Protein, DNA and RNA chains ⓘ

In the following table, the column labelled ‘#RSRZ> 2’ contains the number (and percentage) of RSRZ outliers, followed by percent RSRZ outliers for the chain as percentile scores relative to all X-ray entries and entries of similar resolution. The OWAB column contains the minimum, median, 95<sup>th</sup> percentile and maximum values of the occupancy-weighted average B-factor per residue. The column labelled ‘Q< 0.9’ lists the number of (and percentage) of residues with an average occupancy less than 0.9.

Mol	Chain	Analysed	<RSRZ>	#RSRZ>2	OWAB(Å <sup>2</sup> )	Q<0.9
1	A	1405/1733 (81%)	-0.03	30 (2%) 60 17	78, 133, 223, 254	0
2	B	1114/1224 (91%)	-0.10	18 (1%) 68 22	71, 115, 183, 241	0
3	C	266/318 (83%)	-0.19	0 100 100	87, 113, 153, 215	0
4	E	214/215 (99%)	-0.10	0 100 100	102, 159, 206, 216	0
5	F	85/155 (54%)	-0.16	0 100 100	109, 139, 178, 196	0
6	H	133/146 (91%)	0.17	2 (1%) 70 24	131, 172, 202, 222	0
7	I	119/122 (97%)	-0.16	0 100 100	93, 138, 185, 200	0
8	J	65/70 (92%)	-0.17	0 100 100	81, 104, 136, 151	0
9	K	114/120 (95%)	-0.19	0 100 100	87, 123, 150, 175	0
10	L	46/70 (65%)	0.08	1 (2%) 59 16	99, 155, 188, 214	0
11	R	5/5 (100%)	0.11	0 100 100	148, 153, 180, 183	0
12	T	13/29 (44%)	1.07	3 (23%) 1 1	150, 170, 237, 245	0
All	All	3579/4207 (85%)	-0.07	54 (1%) 70 24	71, 128, 208, 254	0

The worst 5 of 54 RSRZ outliers are listed below:

Mol	Chain	Res	Type	RSRZ
12	T	28	DT	5.2
1	A	66	LYS	5.1
1	A	69	THR	4.7
2	B	1222	ARG	4.5
1	A	72	GLU	4.3

### 6.2 Non-standard residues in protein, DNA, RNA chains ⓘ

There are no non-standard protein/DNA/RNA residues in this entry.

### 6.3 Carbohydrates ⓘ

There are no carbohydrates in this entry.

### 6.4 Ligands ⓘ

In the following table, the Atoms column lists the number of modelled atoms in the group and the number defined in the chemical component dictionary. LLDF column lists the quality of electron density of the group with respect to its neighbouring residues in protein, DNA or RNA chains. The B-factors column lists the minimum, median, 95<sup>th</sup> percentile and maximum values of B factors of atoms in the group. The column labelled 'Q< 0.9' lists the number of atoms with occupancy less than 0.9.

Mol	Type	Chain	Res	Atoms	RSR	LLDF	B-factors(Å <sup>2</sup> )	Q<0.9
15	ATP	A	1736	31/31	0.21	-0.16	162,165,195,197	0
14	ZN	I	203	1/1	0.08	-0.81	134,134,134,134	0
14	ZN	J	101	1/1	0.20	-0.87	102,102,102,102	0
14	ZN	C	319	1/1	0.10	-0.96	113,113,113,113	0
14	ZN	I	204	1/1	0.07	-1.18	112,112,112,112	0
14	ZN	A	1735	1/1	0.14	-1.32	198,198,198,198	0
14	ZN	B	1307	1/1	0.11	-1.51	221,221,221,221	0
14	ZN	L	105	1/1	0.03	-1.51	142,142,142,142	0
13	MG	A	2002	1/1	0.14	-1.63	131,131,131,131	0
14	ZN	A	1734	1/1	0.10	-2.69	300,300,300,300	0
13	MG	A	2001	1/1	0.06	-3.18	102,102,102,102	0

### 6.5 Other polymers ⓘ

There are no such residues in this entry.