



Full wwPDB X-ray Structure Validation Report

Feb 28, 2014 – 01:17 PM GMT

PDB ID : 1S3U
Title : Structure Determination of TetrahydroquinazolineAntifolates in Complex with Human and Pneumocystis carinii Dihydrofolate Reductase: Correlations of Enzyme Selectivity and Stereochemistry
Authors : Cody, V.; Luft, J.R.; Pangborn, W.; Gangjee, A.; Queener, S.F.
Deposited on : 2004-01-14
Resolution : 2.50 Å(reported)

This is a full wwPDB validation report for a publicly released PDB entry.
We welcome your comments at validation@mail.wwpdb.org
A user guide is available at <http://wwpdb.org/ValidationPDFNotes.html>

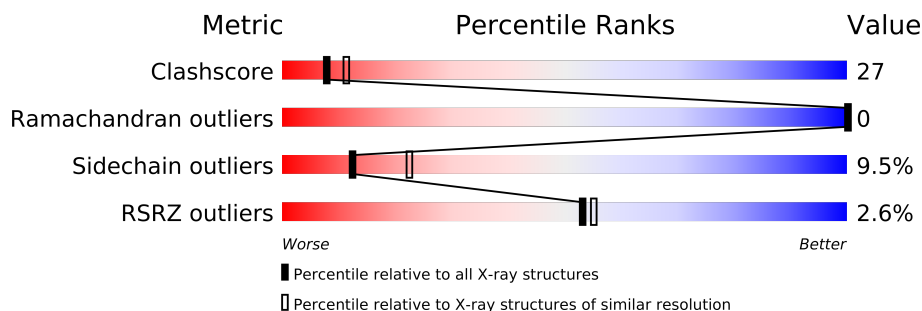
The following versions of software and data (see [references](#)) were used in the production of this report:

MolProbity : 4.02b-467
Mogul : 1.15 2013
Xtriage (Phenix) : dev-1323
EDS : stable22639
Percentile statistics : 21963
Refmac : 5.8.0049
CCP4 : 6.3.0 (Settle)
Ideal geometry (proteins) : Engh & Huber (2001)
Ideal geometry (DNA, RNA) : Parkinson et. al. (1996)
Validation Pipeline (wwPDB-VP) : stable22683

1 Overall quality at a glance

The reported resolution of this entry is 2.50 Å.

Percentile scores (ranging between 0-100) for global validation metrics of the entry are shown in the following graphic. The table shows the number of entries on which the scores are based.



Metric	Whole archive (#Entries)	Similar resolution (#Entries, resolution range(Å))
Clashscore	79885	3562 (2.50-2.50)
Ramachandran outliers	78287	3480 (2.50-2.50)
Sidechain outliers	78261	3482 (2.50-2.50)
RSRZ outliers	66119	2785 (2.50-2.50)

The table below summarises the geometric issues observed across the polymeric chains and their fit to the electron density. The red, orange, yellow and green segments on the lower bar indicate the fraction of residues that contain outliers for ≥ 3 , 2, 1 and 0 types of geometric quality criteria. The upper red bar (where present) indicates the fraction of residues that have poor fit to the electron density.

Mol	Chain	Length	Quality of chain
1	A	186	

2 Entry composition i

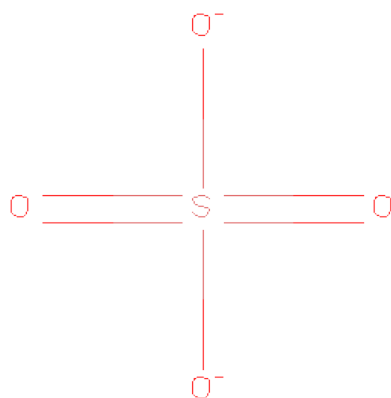
There are 4 unique types of molecules in this entry. The entry contains 1591 atoms, of which 0 are hydrogen and 0 are deuterium.

In the tables below, the ZeroOcc column contains the number of atoms modelled with zero occupancy, the AltConf column contains the number of residues with at least one atom in alternate conformation and the Trace column contains the number of residues modelled with at most 2 atoms.

- Molecule 1 is a protein called Dihydrofolate reductase.

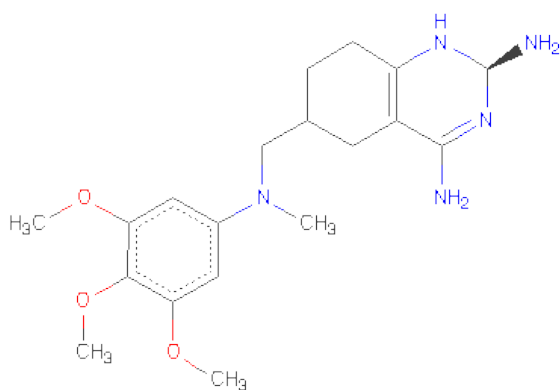
Mol	Chain	Residues	Atoms					ZeroOcc	AltConf	Trace
1	A	186	Total	C	N	O	S	0	0	0
			1502	963	253	279	7			

- Molecule 2 is SULFATE ION (three-letter code: SO4) (formula: O₄S).



Mol	Chain	Residues	Atoms			ZeroOcc	AltConf
2	A	1	Total	O	S	0	0
			5	4	1		
2	A	1	Total	O	S	0	0
			5	4	1		

- Molecule 3 is (2R,6S)-6-{[METHYL(3,4,5-TRIMETHOXYPHENYL)AMINO]METHYL}-1,2,5,6,7,8-HEXAHYDROQUINAZOLINE-2,4-DIAMINE (three-letter code: TQD) (formula: C₁₉H₂₉N₅O₃).



Mol	Chain	Residues	Atoms				ZeroOcc	AltConf
3	A	1	Total	C	N	O	0	0
			27	19	5	3		

- Molecule 4 is water.

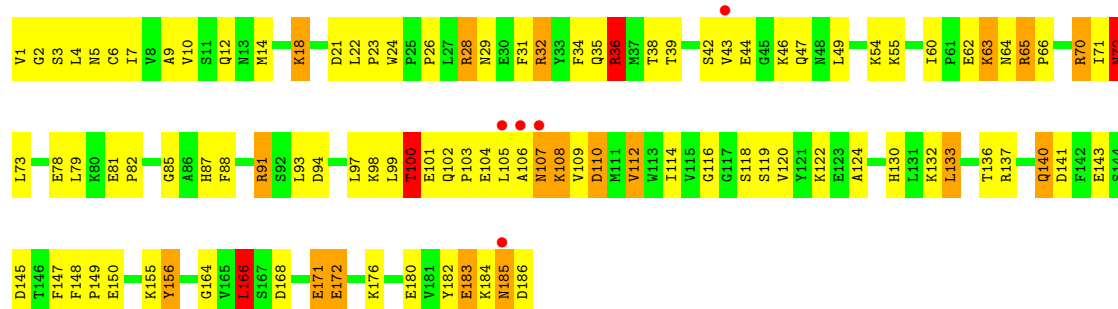
Mol	Chain	Residues	Atoms		ZeroOcc	AltConf
4	A	52	Total	O	0	0
			52	52		

3 Residue-property plots i

These plots are drawn for all protein, RNA and DNA chains in the entry. The first graphic for a chain summarises the proportions of errors displayed in the second graphic. The second graphic shows the sequence view annotated by issues in geometry and electron density. Residues are color-coded according to the number of geometric quality criteria for which they contain at least one outlier: green = 0, yellow = 1, orange = 2 and red = 3 or more. A red dot above a residue indicates a poor fit to the electron density ($\text{RSRZ} > 2$). Stretches of 2 or more consecutive residues without any outlier are shown as a green connector. Residues present in the sample, but not in the model, are shown in grey.

- Molecule 1: Dihydrofolate reductase

Chain A:



4 Data and refinement statistics

Property	Value	Source
Space group	H 3	Depositor
Cell constants a, b, c, α , β , γ	85.17Å 85.17Å 77.86Å 90.00° 90.00° 120.00°	Depositor
Resolution (Å)	50.00 – 2.50 33.33 – 2.50	Depositor EDS
% Data completeness (in resolution range)	(Not available) (50.00-2.50) 96.7 (33.33-2.50)	Depositor EDS
R_{merge}	0.05	Depositor
R_{sym}	(Not available)	Depositor
$\langle I/\sigma(I) \rangle$ ¹	3.02 (at 2.51Å)	Xtriage
Refinement program	PROFFT	Depositor
R, R_{free}	0.165 , 0.182 0.185 , (Not available)	Depositor DCC
R_{free} test set	No test flags present.	DCC
Wilson B-factor (Å ²)	29.1	Xtriage
Anisotropy	0.121	Xtriage
Bulk solvent k_{sol} (e/Å ³), B_{sol} (Å ²)	0.36 , 47.9	EDS
Estimated twinning fraction	0.045 for h,-h-k,-l	Xtriage
L-test for twinning	$\langle L \rangle = 0.48$, $\langle L^2 \rangle = 0.31$	Xtriage
Outliers	0 of 7225 reflections	Xtriage
F_o, F_c correlation	0.94	EDS
Total number of atoms	1591	wwPDB-VP
Average B, all atoms (Å ²)	19.0	wwPDB-VP

Xtriage's analysis on translational NCS is as follows: *The largest off-origin peak in the Patterson function is 6.38% of the height of the origin peak. No significant pseudotranslation is detected.*

¹Intensities estimated from amplitudes.

5 Model quality

5.1 Standard geometry

Bond lengths and bond angles in the following residue types are not validated in this section: TQD, SO4

The Z score for a bond length (or angle) is the number of standard deviations the observed value is removed from the expected value. A bond length (or angle) with $|Z| > 5$ is considered an outlier worth inspection. RMSZ is the root-mean-square of all Z scores of the bond lengths (or angles).

Mol	Chain	Bond lengths		Bond angles	
		RMSZ	$\# Z > 5$	RMSZ	$\# Z > 5$
1	A	1.01	1/1537 (0.1%)	2.10	55/2073 (2.7%)

Chiral center outliers are detected by calculating the chiral volume of a chiral center and verifying if the center is modelled as a planar moiety or with the opposite hand. A planarity outlier is detected by checking planarity of atoms in a peptide group, atoms in a mainchain group or atoms of a sidechain that are expected to be planar.

Mol	Chain	#Chirality outliers	#Planarity outliers
1	A	0	2

All (1) bond length outliers are listed below:

Mol	Chain	Res	Type	Atoms	Z	Observed(Å)	Ideal(Å)
1	A	100	THR	C-N	9.79	1.56	1.34

All (55) bond angle outliers are listed below:

Mol	Chain	Res	Type	Atoms	Z	Observed(°)	Ideal(°)
1	A	137	ARG	NE-CZ-NH2	12.22	126.41	120.30
1	A	28	ARG	CD-NE-CZ	11.39	139.55	123.60
1	A	65	ARG	NE-CZ-NH1	11.03	125.81	120.30
1	A	78	GLU	CA-CB-CG	10.30	136.06	113.40
1	A	110	ASP	CB-CG-OD1	9.97	127.28	118.30
1	A	180	GLU	OE1-CD-OE2	-9.80	111.53	123.30
1	A	137	ARG	NE-CZ-NH1	-9.56	115.52	120.30
1	A	171	GLU	OE1-CD-OE2	9.34	134.50	123.30
1	A	32	ARG	NE-CZ-NH1	9.19	124.89	120.30
1	A	108	LYS	O-C-N	-8.18	109.62	122.70
1	A	150	GLU	OE1-CD-OE2	7.66	132.49	123.30
1	A	36	ARG	CD-NE-CZ	-7.35	113.31	123.60

Continued on next page...

Continued from previous page...

Mol	Chain	Res	Type	Atoms	Z	Observed(°)	Ideal(°)
1	A	70	ARG	CB-CA-C	-6.95	96.50	110.40
1	A	70	ARG	NE-CZ-NH2	-6.89	116.85	120.30
1	A	168	ASP	CB-CG-OD2	6.79	124.42	118.30
1	A	18	LYS	O-C-N	6.68	133.39	122.70
1	A	36	ARG	CA-CB-CG	6.60	127.92	113.40
1	A	150	GLU	CG-CD-OE2	-6.44	105.42	118.30
1	A	91	ARG	CD-NE-CZ	6.28	132.39	123.60
1	A	156	TYR	CB-CG-CD1	-6.20	117.28	121.00
1	A	145	ASP	CB-CA-C	6.13	122.67	110.40
1	A	172	GLU	CG-CD-OE2	-6.12	106.05	118.30
1	A	22	LEU	CA-CB-CG	6.10	129.33	115.30
1	A	140	GLN	N-CA-CB	5.95	121.30	110.60
1	A	166	LEU	CA-CB-CG	5.88	128.82	115.30
1	A	21	ASP	CB-CG-OD1	5.83	123.55	118.30
1	A	7	ILE	CB-CA-C	5.78	123.15	111.60
1	A	6	CYS	N-CA-CB	5.75	120.96	110.60
1	A	136	THR	N-CA-CB	5.74	121.20	110.30
1	A	39	THR	CA-CB-OG1	-5.69	97.06	109.00
1	A	9	ALA	CB-CA-C	5.67	118.60	110.10
1	A	140	GLN	CG-CD-OE1	-5.64	110.31	121.60
1	A	65	ARG	NE-CZ-NH2	-5.61	117.49	120.30
1	A	180	GLU	CG-CD-OE1	5.57	129.43	118.30
1	A	6	CYS	O-C-N	5.50	131.50	122.70
1	A	35	GLN	O-C-N	-5.47	113.95	122.70
1	A	140	GLN	CB-CG-CD	-5.43	97.47	111.60
1	A	93	LEU	CA-CB-CG	5.39	127.70	115.30
1	A	116	GLY	CA-C-O	-5.38	110.91	120.60
1	A	3	SER	O-C-N	5.38	131.30	122.70
1	A	18	LYS	N-CA-CB	5.36	120.24	110.60
1	A	14	MET	CG-SD-CE	5.34	108.74	100.20
1	A	132	LYS	CA-C-N	-5.33	105.48	117.20
1	A	91	ARG	CB-CG-CD	5.32	125.43	111.60
1	A	120	VAL	O-C-N	5.30	131.18	122.70
1	A	72	ASN	CB-CA-C	5.29	120.99	110.40
1	A	18	LYS	CA-C-O	-5.29	109.00	120.10
1	A	55	LYS	CD-CE-NZ	-5.28	99.56	111.70
1	A	183	GLU	CA-CB-CG	5.25	124.95	113.40
1	A	172	GLU	CA-CB-CG	5.24	124.92	113.40
1	A	137	ARG	CD-NE-CZ	-5.19	116.33	123.60
1	A	133	LEU	CB-CG-CD1	-5.18	102.20	111.00
1	A	100	THR	CA-C-N	-5.11	105.95	117.20
1	A	143	GLU	CG-CD-OE1	5.11	128.52	118.30

Continued on next page...

Continued from previous page...

Mol	Chain	Res	Type	Atoms	Z	Observed(°)	Ideal(°)
1	A	141	ASP	O-C-N	5.10	130.86	122.70

There are no chirality outliers.

All (2) planarity outliers are listed below:

Mol	Chain	Res	Type	Group
1	A	108	LYS	Mainchain
1	A	70	ARG	Sidechain

5.2 Close contacts ⓘ

In the following table, the Non-H and H(model) columns list the number of non-hydrogen atoms and hydrogen atoms in the chain respectively. The H(added) column lists the number of hydrogens added by MolProbity. The Clashes column lists the number of clashes within the asymmetric unit, and the number in parentheses is this value normalized per 1000 atoms of the molecule in the chain. The Symm-Clashes column gives symmetry related clashes, in the same way as for the Clashes column.

Mol	Chain	Non-H	H(model)	H(added)	Clashes	Symm-Clashes
1	A	1502	0	1511	80	0
2	A	10	0	0	1	0
3	A	27	0	28	7	0
4	A	52	0	0	6	0
All	All	1591	0	1539	83	0

Clashscore is defined as the number of clashes calculated for the entry per 1000 atoms (including hydrogens) of the entry. The overall clashscore for this entry is 27.

All (83) close contacts within the same asymmetric unit are listed below.

Atom-1	Atom-2	Distance(Å)	Clash(Å)
1:A:1:VAL:HG21	1:A:100:THR:CG2	1.71	1.20
1:A:1:VAL:HG21	1:A:100:THR:HG23	1.11	1.07
3:A:187:TQD:H4B3	3:A:187:TQD:O3'	1.62	1.00
1:A:1:VAL:CG2	1:A:100:THR:HG23	1.94	0.98
1:A:36:ARG:NH2	1:A:164:GLY:O	2.06	0.88
1:A:103:PRO:HA	1:A:106:ALA:HB2	1.54	0.88
1:A:2:GLY:N	1:A:110:ASP:O	2.07	0.87
1:A:87:HIS:HE1	4:A:204:HOH:O	1.57	0.87
1:A:130:HIS:HE1	1:A:183:GLU:HG3	1.45	0.80
1:A:31:PHE:HE1	3:A:187:TQD:H7'1	1.45	0.79
1:A:130:HIS:HB2	4:A:210:HOH:O	1.83	0.77

Continued on next page...

Continued from previous page...

Atom-1	Atom-2	Distance(Å)	Clash(Å)
1:A:79:LEU:O	1:A:91:ARG:NH1	2.19	0.75
1:A:155:LYS:HD3	1:A:186:ASP:OD2	1.87	0.74
3:A:187:TQD:C4B	3:A:187:TQD:O3'	2.36	0.73
1:A:28:ARG:O	1:A:32:ARG:HG3	1.88	0.73
1:A:54:LYS:HE2	2:A:189:SO4:O4	1.89	0.72
1:A:4:LEU:HD12	1:A:112:VAL:HG22	1.71	0.72
1:A:26:PRO:HB2	1:A:28:ARG:HH11	1.54	0.72
1:A:31:PHE:HE1	3:A:187:TQD:C7'	2.07	0.67
1:A:156:TYR:CE2	1:A:184:LYS:HB2	2.29	0.67
1:A:72:ASN:H	1:A:87:HIS:CD2	2.12	0.66
1:A:130:HIS:CE1	1:A:183:GLU:HG3	2.29	0.66
1:A:103:PRO:HA	1:A:106:ALA:CB	2.25	0.66
1:A:184:LYS:HG2	1:A:185:ASN:N	2.11	0.65
1:A:72:ASN:H	1:A:87:HIS:HD2	1.43	0.65
1:A:62:GLU:HG3	1:A:65:ARG:NH1	2.12	0.64
1:A:43:VAL:CG1	1:A:46:LYS:HG3	2.29	0.63
1:A:186:ASP:OD1	1:A:186:ASP:C	2.34	0.62
1:A:103:PRO:CA	1:A:106:ALA:HB2	2.28	0.62
1:A:186:ASP:OD1	1:A:186:ASP:OXT	2.19	0.61
1:A:42:SER:OG	1:A:110:ASP:OD1	2.17	0.57
1:A:102:GLN:O	1:A:106:ALA:HB2	2.04	0.57
1:A:31:PHE:CE1	3:A:187:TQD:C7'	2.88	0.56
1:A:156:TYR:CD2	1:A:184:LYS:HB2	2.41	0.55
1:A:31:PHE:CE1	3:A:187:TQD:H7'1	2.35	0.55
1:A:43:VAL:HG12	1:A:46:LYS:HG3	1.90	0.54
1:A:71:ILE:CG2	1:A:88:PHE:HE2	2.21	0.54
1:A:29:ASN:HB2	1:A:172:GLU:OE1	2.09	0.53
1:A:107:ASN:N	1:A:107:ASN:OD1	2.42	0.52
1:A:26:PRO:HB2	1:A:28:ARG:NH1	2.24	0.52
1:A:130:HIS:ND1	1:A:184:LYS:O	2.43	0.51
1:A:106:ALA:HB3	1:A:107:ASN:OD1	2.10	0.51
1:A:133:LEU:HB2	1:A:182:TYR:HB2	1.93	0.51
1:A:43:VAL:HG11	1:A:46:LYS:HG3	1.93	0.51
1:A:63:LYS:HG3	1:A:64:ASN:N	2.26	0.50
1:A:71:ILE:HG21	1:A:88:PHE:HE2	1.75	0.50
1:A:166:LEU:HB2	4:A:227:HOH:O	2.11	0.50
1:A:34:PHE:O	1:A:38:THR:HG23	2.13	0.49
1:A:147:PHE:CD1	1:A:147:PHE:N	2.81	0.49
1:A:94:ASP:O	1:A:98:LYS:HE3	2.12	0.48
1:A:99:LEU:HA	1:A:102:GLN:HG3	1.95	0.48
1:A:23:PRO:HD2	1:A:24:TRP:CZ3	2.49	0.48
3:A:187:TQD:H2'1	3:A:187:TQD:H9'1	1.49	0.47

Continued on next page...

Continued from previous page...

Atom-1	Atom-2	Distance(Å)	Clash(Å)
1:A:66:PRO:HG3	1:A:85:GLY:O	2.15	0.47
1:A:81:GLU:HB2	1:A:82:PRO:HD2	1.96	0.46
1:A:36:ARG:HG3	1:A:36:ARG:HH11	1.80	0.46
1:A:32:ARG:O	1:A:36:ARG:HB3	2.16	0.46
1:A:130:HIS:HE1	1:A:183:GLU:CG	2.21	0.46
1:A:47:GLN:O	1:A:109:VAL:HA	2.16	0.46
1:A:36:ARG:HG3	1:A:36:ARG:NH1	2.32	0.45
1:A:18:LYS:HE2	1:A:18:LYS:HB3	1.48	0.45
1:A:99:LEU:HD22	1:A:105:LEU:HD12	1.98	0.45
1:A:171:GLU:CD	1:A:176:LYS:HZ3	2.20	0.45
1:A:99:LEU:HA	1:A:102:GLN:CG	2.48	0.43
1:A:43:VAL:N	4:A:232:HOH:O	2.52	0.43
1:A:114:ILE:HD13	1:A:124:ALA:HB2	2.00	0.43
1:A:97:LEU:O	1:A:100:THR:HB	2.18	0.43
1:A:185:ASN:HD22	1:A:185:ASN:C	2.17	0.43
1:A:148:PHE:CD1	1:A:149:PRO:HD2	2.54	0.42
1:A:133:LEU:HD22	1:A:156:TYR:CD2	2.54	0.42
1:A:36:ARG:CG	1:A:36:ARG:NH1	2.79	0.42
1:A:97:LEU:O	1:A:101:GLU:HG2	2.18	0.42
1:A:1:VAL:HG21	1:A:100:THR:CB	2.44	0.41
1:A:97:LEU:O	1:A:100:THR:HG22	2.20	0.41
1:A:49:LEU:HD11	1:A:73:LEU:HB2	2.03	0.41
1:A:87:HIS:CE1	4:A:204:HOH:O	2.46	0.41
1:A:60:ILE:O	1:A:65:ARG:NH2	2.52	0.41
1:A:71:ILE:CG2	1:A:88:PHE:CE2	3.01	0.41
1:A:102:GLN:C	1:A:104:GLU:H	2.24	0.41
1:A:98:LYS:HA	1:A:101:GLU:CG	2.51	0.40
1:A:1:VAL:HG23	4:A:198:HOH:O	2.20	0.40
1:A:94:ASP:O	1:A:98:LYS:HG3	2.21	0.40
1:A:148:PHE:CG	1:A:149:PRO:HD2	2.56	0.40

There are no symmetry-related clashes.

5.3 Torsion angles

5.3.1 Protein backbone ⓘ

In the following table, the Percentiles column shows the percent Ramachandran outliers of the chain as a percentile score with respect to all X-ray entries followed by that with respect to entries of similar resolution. The Analysed column shows the number of residues for which the backbone conformation was analysed, and the total number of residues.

Mol	Chain	Analysed	Favoured	Allowed	Outliers	Percentiles	
1	A	184/186 (99%)	177 (96%)	7 (4%)	0	100	100

There are no Ramachandran outliers to report.

5.3.2 Protein sidechains ⓘ

In the following table, the Percentiles column shows the percent sidechain outliers of the chain as a percentile score with respect to all X-ray entries followed by that with respect to entries of similar resolution. The Analysed column shows the number of residues for which the sidechain conformation was analysed, and the total number of residues.

Mol	Chain	Analysed	Rotameric	Outliers	Percentiles	
1	A	168/168 (100%)	152 (90%)	16 (10%)	12	22

All (16) residues with a non-rotameric sidechain are listed below:

Mol	Chain	Res	Type
1	A	5	ASN
1	A	10	VAL
1	A	12	GLN
1	A	36	ARG
1	A	44	GLU
1	A	63	LYS
1	A	72	ASN
1	A	100	THR
1	A	107	ASN
1	A	112	VAL
1	A	118	SER
1	A	119	SER
1	A	122	LYS
1	A	140	GLN
1	A	166	LEU
1	A	185	ASN

Some sidechains can be flipped to improve hydrogen bonding and reduce clashes. All (2) such sidechains are listed below:

Mol	Chain	Res	Type
1	A	87	HIS
1	A	185	ASN

5.3.3 RNA ⓘ

There are no RNA chains in this entry.

5.4 Non-standard residues in protein, DNA, RNA chains ⓘ

There are no non-standard protein/DNA/RNA residues in this entry.

5.5 Carbohydrates ⓘ

There are no carbohydrates in this entry.

5.6 Ligand geometry ⓘ

3 ligands are modelled in this entry.

In the following table, the Counts columns list the number of bonds (or angles) for which Mogul statistics could be retrieved, the number of bonds (or angles) that are observed in the model and the number of bonds (or angles) that are defined in the chemical component dictionary. The Link column lists molecule types, if any, to which the group is linked. The Z score for a bond length (or angle) is the number of standard deviations the observed value is removed from the expected value. A bond length (or angle) with $|Z| > 2$ is considered an outlier worth inspection. RMSZ is the root-mean-square of all Z scores of the bond lengths (or angles).

Mol	Type	Chain	Res	Link	Bond lengths			Bond angles		
					Counts	RMSZ	# $ Z > 2$	Counts	RMSZ	# $ Z > 2$
3	TQD	A	187	-	29,29,29	2.78	7 (24%)	40,41,41	3.57	20 (50%)
2	SO4	A	188	-	4,4,4	0.89	0	6,6,6	0.68	0
2	SO4	A	189	-	4,4,4	1.17	0	6,6,6	0.74	0

In the following table, the Chirals column lists the number of chiral outliers, the number of chiral centers analysed, the number of these observed in the model and the number defined in the chemical component dictionary. Similar counts are reported in the Torsion and Rings columns. '-' means no outliers of that kind were identified.

Mol	Type	Chain	Res	Link	Chirals	Torsions	Rings
3	TQD	A	187	-	1/1/6/7	0/14/39/39	0/1/3/3
2	SO4	A	188	-	-	0/0/0/0	0/0/0/0
2	SO4	A	189	-	-	0/0/0/0	0/0/0/0

All (7) bond length outliers are listed below:

Mol	Chain	Res	Type	Atoms	Z	Observed(Å)	Ideal(Å)
3	A	187	TQD	C5D-C6D	-7.95	1.40	1.53
3	A	187	TQD	C8-C8A	-7.85	1.39	1.49
3	A	187	TQD	C5D-C4A	-4.92	1.42	1.51
3	A	187	TQD	C7'-C8	-4.14	1.42	1.52
3	A	187	TQD	O5'-C5'	4.11	1.43	1.37
3	A	187	TQD	C7'-C6D	-4.04	1.41	1.52
3	A	187	TQD	C8A-C4A	2.80	1.42	1.37

All (20) bond angle outliers are listed below:

Mol	Chain	Res	Type	Atoms	Z	Observed(°)	Ideal(°)
3	A	187	TQD	C7'-C6D-C5D	12.24	120.61	108.94
3	A	187	TQD	C5B-O5'-C5'	-7.36	106.69	117.59
3	A	187	TQD	C2'-C1'-N9'	-7.16	114.21	121.72
3	A	187	TQD	C8A-C4A-C4D	-6.69	114.14	119.61
3	A	187	TQD	N2'-C2D-N3'	-5.87	117.22	119.44
3	A	187	TQD	C9'-N9'-C8'	4.83	122.62	116.87
3	A	187	TQD	C7'-C8-C8A	4.66	119.61	108.98
3	A	187	TQD	O5'-C5'-C4'	-4.34	107.77	115.31
3	A	187	TQD	O5'-C5'-C6'	4.13	131.41	124.23
3	A	187	TQD	C7'-C6D-C8'	3.41	122.29	111.73
3	A	187	TQD	C6D-C5D-C4A	3.29	119.64	112.26
3	A	187	TQD	C5D-C4A-C8A	-3.03	116.53	120.99
3	A	187	TQD	C5D-C4A-C4D	2.90	123.72	117.71
3	A	187	TQD	N4'-C4D-N3'	-2.88	114.17	118.72
3	A	187	TQD	C1'-C6'-C5'	-2.41	116.25	120.29
3	A	187	TQD	C4A-C4D-N3'	-2.30	118.51	121.01
3	A	187	TQD	C6'-C1'-C2'	2.20	123.46	119.48
3	A	187	TQD	C8-C7'-C6D	2.09	118.48	113.08
3	A	187	TQD	C4B-O4'-C4'	-2.09	109.19	114.90
3	A	187	TQD	C8-C8A-N1'	2.00	118.34	115.26

All (1) chirality outliers are listed below:

Mol	Chain	Res	Type	Atom
3	A	187	TQD	C6D

There are no torsion outliers.

There are no ring outliers.

5.7 Other polymers ⓘ

There are no such residues in this entry.

5.8 Polymer linkage issues

There are no chain breaks in this entry.

6 Fit of model and data

6.1 Protein, DNA and RNA chains

In the following table, the column labelled ‘#RSRZ> 2’ contains the number (and percentage) of RSRZ outliers, followed by percent RSRZ outliers for the chain as percentile scores relative to all X-ray entries and entries of similar resolution. The OWAB column contains the minimum, median, 95th percentile and maximum values of the occupancy-weighted average B-factor per residue. The column labelled ‘Q< 0.9’ lists the number of (and percentage) of residues with an average occupancy less than 0.9.

Mol	Chain	Analysed	<RSRZ>	#RSRZ>2	OWAB(Å ²)	Q<0.9
1	A	186/186 (100%)	-0.19	5 (2%) 52 54	4, 17, 36, 50	0

All (5) RSRZ outliers are listed below:

Mol	Chain	Res	Type	RSRZ
1	A	105	LEU	3.8
1	A	107	ASN	2.6
1	A	106	ALA	2.6
1	A	185	ASN	2.2
1	A	43	VAL	2.1

6.2 Non-standard residues in protein, DNA, RNA chains

There are no non-standard protein/DNA/RNA residues in this entry.

6.3 Carbohydrates

There are no carbohydrates in this entry.

6.4 Ligands

In the following table, the Atoms column lists the number of modelled atoms in the group and the number defined in the chemical component dictionary. LLDF column lists the quality of electron density of the group with respect to its neighbouring residues in protein, DNA or RNA chains. The B-factors column lists the minimum, median, 95th percentile and maximum values of B factors of atoms in the group. The column labelled ‘Q< 0.9’ lists the number of atoms with occupancy less than 0.9.

Mol	Type	Chain	Res	Atoms	RSR	LLDF	B-factors(Å ²)	Q<0.9
3	TQD	A	187	27/27	0.14	0.42	9,15,18,19	0

Continued on next page...

Continued from previous page...

Mol	Type	Chain	Res	Atoms	RSR	LLDF	B-factors(\AA^2)	Q<0.9
2	SO4	A	188	5/5	0.10	-0.38	19,19,20,20	0
2	SO4	A	189	5/5	0.09	-1.16	34,35,35,35	0

6.5 Other polymers ⓘ

There are no such residues in this entry.