



Full wwPDB X-ray Structure Validation Report

Feb 28, 2014 – 09:01 AM GMT

PDB ID : 3S8B
Title : Structure of Yeast Ribonucleotide Reductase 1 with AMPPNP and CDP
Authors : Ahmad, M.F.; Kaushal, P.S.; Wan, Q.; Wijeratna, S.R.; Huang, M.; Dealwis, C.D.
Deposited on : 2011-05-27
Resolution : 2.80 Å(reported)

This is a full wwPDB validation report for a publicly released PDB entry.
We welcome your comments at validation@mail.wwpdb.org
A user guide is available at <http://wwpdb.org/ValidationPDFNotes.html>

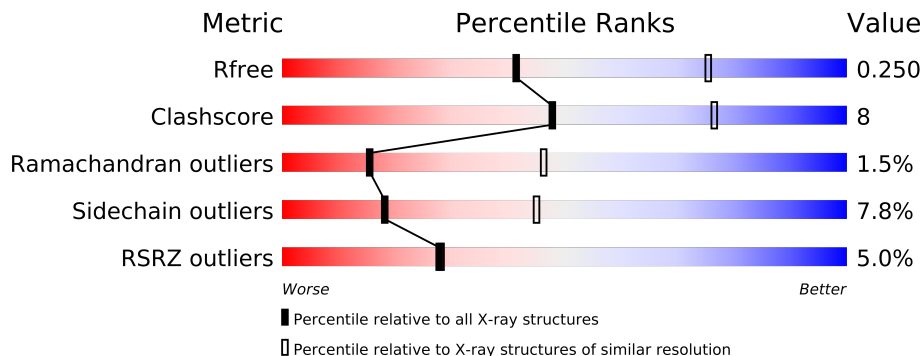
The following versions of software and data (see [references](#)) were used in the production of this report:

MolProbity : 4.02b-467
Mogul : 1.15 2013
Xtriage (Phenix) : dev-1323
EDS : stable22639
Percentile statistics : 21963
Refmac : 5.8.0049
CCP4 : 6.3.0 (Settle)
Ideal geometry (proteins) : Engh & Huber (2001)
Ideal geometry (DNA, RNA) : Parkinson et. al. (1996)
Validation Pipeline (wwPDB-VP) : stable22683

1 Overall quality at a glance

The reported resolution of this entry is 2.80 Å.

Percentile scores (ranging between 0-100) for global validation metrics of the entry are shown in the following graphic. The table shows the number of entries on which the scores are based.



Metric	Whole archive (#Entries)	Similar resolution (#Entries, resolution range(Å))
R_{free}	66092	1799 (2.80-2.80)
Clashscore	79885	2295 (2.80-2.80)
Ramachandran outliers	78287	2252 (2.80-2.80)
Sidechain outliers	78261	2254 (2.80-2.80)
RSRZ outliers	66119	1802 (2.80-2.80)

The table below summarises the geometric issues observed across the polymeric chains and their fit to the electron density. The red, orange, yellow and green segments on the lower bar indicate the fraction of residues that contain outliers for ≥ 3 , 2, 1 and 0 types of geometric quality criteria. The upper red bar (where present) indicates the fraction of residues that have poor fit to the electron density.

Mol	Chain	Length	Quality of chain
1	A	888	

The following table lists non-polymeric compounds that are outliers for geometric or electron-density-fit criteria:

Mol	Type	Chain	Res	Geometry	Electron density
4	MG	A	891	-	X

2 Entry composition i

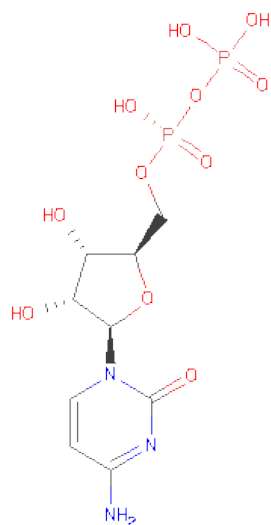
There are 5 unique types of molecules in this entry. The entry contains 5322 atoms, of which 0 are hydrogen and 0 are deuterium.

In the tables below, the ZeroOcc column contains the number of atoms modelled with zero occupancy, the AltConf column contains the number of residues with at least one atom in alternate conformation and the Trace column contains the number of residues modelled with at most 2 atoms.

- Molecule 1 is a protein called Ribonucleoside-diphosphatereductase large chain 1.

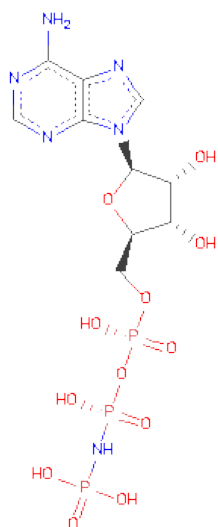
Mol	Chain	Residues	Atoms					ZeroOcc	AltConf	Trace
			Total	C	N	O	S			
1	A	659	5223	3324	885	983	31	9	0	0

- Molecule 2 is CYTIDINE-5'-DIPHOSPHATE (three-letter code: CDP) (formula: $C_9H_{15}N_3O_{11}P_2$).



Mol	Chain	Residues	Atoms					ZeroOcc	AltConf
			Total	C	N	O	P		
2	A	1	25	9	3	11	2	0	0

- Molecule 3 is PHOSPHOAMINOPHOSPHONICACID-ADENYLATE ESTER (three-letter code: ANP) (formula: $C_{10}H_{17}N_6O_{12}P_3$).



Mol	Chain	Residues	Atoms					ZeroOcc	AltConf
3	A	1	Total	C	N	O	P	0	0
			31	10	6	12	3		

- Molecule 4 is MAGNESIUM ION (three-letter code: MG) (formula: Mg).

Mol	Chain	Residues	Atoms		ZeroOcc	AltConf
4	A	1	Total	Mg	0	0
			1	1		

- Molecule 5 is water.

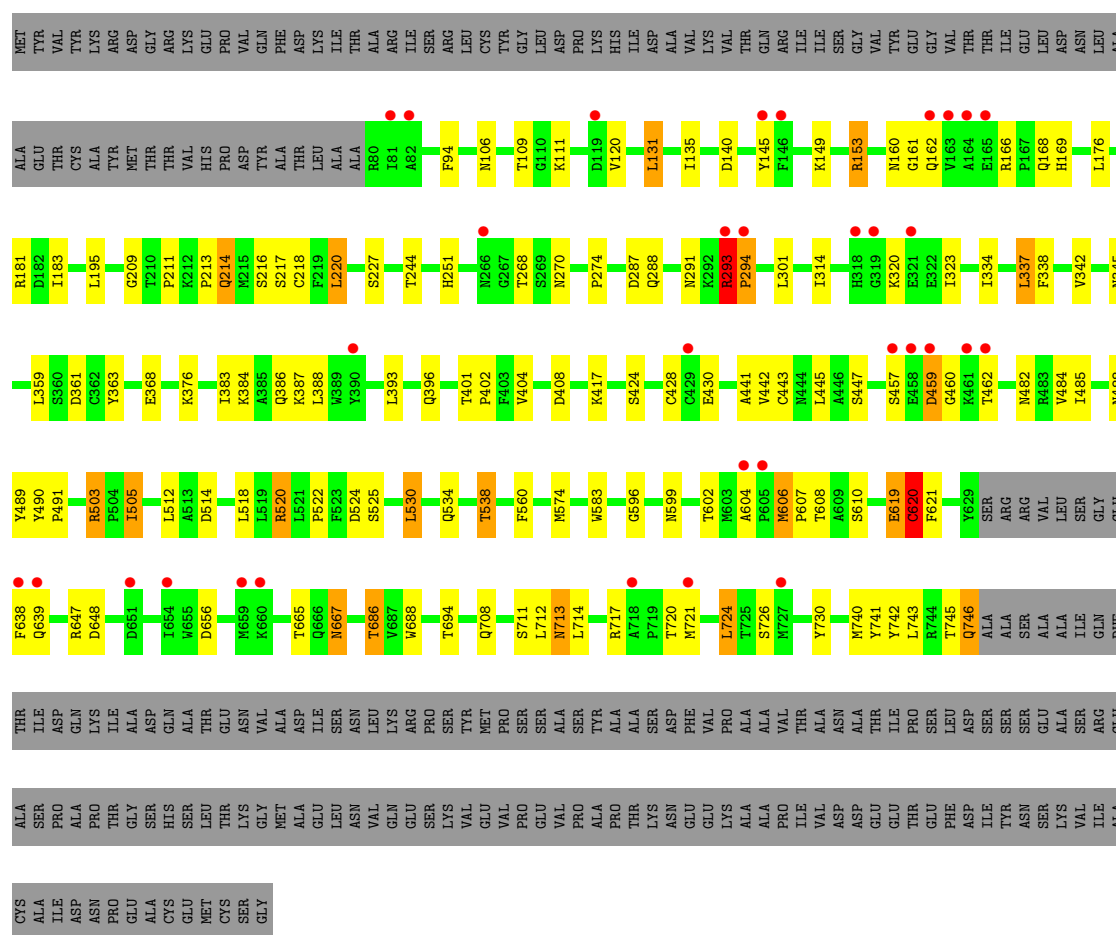
Mol	Chain	Residues	Atoms		ZeroOcc	AltConf
5	A	42	Total	O	0	0
			42	42		

3 Residue-property plots

These plots are drawn for all protein, RNA and DNA chains in the entry. The first graphic for a chain summarises the proportions of errors displayed in the second graphic. The second graphic shows the sequence view annotated by issues in geometry and electron density. Residues are color-coded according to the number of geometric quality criteria for which they contain at least one outlier: green = 0, yellow = 1, orange = 2 and red = 3 or more. A red dot above a residue indicates a poor fit to the electron density ($RSRZ > 2$). Stretches of 2 or more consecutive residues without any outlier are shown as a green connector. Residues present in the sample, but not in the model, are shown in grey.

- Molecule 1: Ribonucleoside-diphosphatereductase large chain 1

Chain A: 



4 Data and refinement statistics

Property	Value	Source
Space group	P 21 21 2	Depositor
Cell constants a, b, c, α , β , γ	107.87Å 117.57Å 64.97Å 90.00° 90.00° 90.00°	Depositor
Resolution (Å)	49.03 – 2.80 49.02 – 2.80	Depositor EDS
% Data completeness (in resolution range)	98.8 (49.03-2.80) 98.7 (49.02-2.80)	Depositor EDS
R_{merge}	0.13	Depositor
R_{sym}	(Not available)	Depositor
$\langle I/\sigma(I) \rangle$ ¹	4.72 (at 2.81Å)	Xtriage
Refinement program	REFMAC 5.2.0019	Depositor
R, R_{free}	0.209 , 0.250 0.210 , 0.250	Depositor DCC
R_{free} test set	2083 reflections (11.17%)	DCC
Wilson B-factor (Å ²)	46.1	Xtriage
Anisotropy	0.053	Xtriage
Bulk solvent k_{sol} (e/Å ³), B_{sol} (Å ²)	0.33 , 20.5	EDS
Estimated twinning fraction	No twinning to report.	Xtriage
L-test for twinning	$\langle L \rangle = 0.50$, $\langle L^2 \rangle = 0.34$	Xtriage
Outliers	0 of 20734 reflections	Xtriage
F_o, F_c correlation	0.92	EDS
Total number of atoms	5322	wwPDB-VP
Average B, all atoms (Å ²)	47.0	wwPDB-VP

Xtriage's analysis on translational NCS is as follows: *The largest off-origin peak in the Patterson function is 6.63% of the height of the origin peak. No significant pseudotranslation is detected.*

¹Intensities estimated from amplitudes.

5 Model quality

5.1 Standard geometry

Bond lengths and bond angles in the following residue types are not validated in this section: ANP, MG, CDP

The Z score for a bond length (or angle) is the number of standard deviations the observed value is removed from the expected value. A bond length (or angle) with $|Z| > 5$ is considered an outlier worth inspection. RMSZ is the root-mean-square of all Z scores of the bond lengths (or angles).

Mol	Chain	Bond lengths		Bond angles	
		RMSZ	$\# Z > 5$	RMSZ	$\# Z > 5$
1	A	0.56	4/5343 (0.1%)	0.61	2/7242 (0.0%)

Chiral center outliers are detected by calculating the chiral volume of a chiral center and verifying if the center is modelled as a planar moiety or with the opposite hand. A planarity outlier is detected by checking planarity of atoms in a peptide group, atoms in a mainchain group or atoms of a sidechain that are expected to be planar.

Mol	Chain	#Chirality outliers	#Planarity outliers
1	A	0	3

All (4) bond length outliers are listed below:

Mol	Chain	Res	Type	Atoms	Z	Observed(Å)	Ideal(Å)
1	A	376	LYS	CG-CD	12.36	1.94	1.52
1	A	620	CYS	CB-SG	-11.01	1.63	1.82
1	A	294	PRO	CA-CB	7.61	1.68	1.53
1	A	294	PRO	N-CA	5.99	1.57	1.47

All (2) bond angle outliers are listed below:

Mol	Chain	Res	Type	Atoms	Z	Observed(°)	Ideal(°)
1	A	294	PRO	N-CA-CB	-6.04	95.95	102.60
1	A	620	CYS	N-CA-CB	-5.70	100.34	110.60

There are no chirality outliers.

All (3) planarity outliers are listed below:

Mol	Chain	Res	Type	Group
1	A	293	ARG	Peptide

Continued on next page...

Continued from previous page...

Mol	Chain	Res	Type	Group
1	A	401	THR	Peptide
1	A	619	GLU	Peptide

5.2 Close contacts ⓘ

In the following table, the Non-H and H(model) columns list the number of non-hydrogen atoms and hydrogen atoms in the chain respectively. The H(added) column lists the number of hydrogens added by MolProbity. The Clashes column lists the number of clashes within the asymmetric unit, and the number in parentheses is this value normalized per 1000 atoms of the molecule in the chain. The Symm-Clashes column gives symmetry related clashes, in the same way as for the Clashes column.

Mol	Chain	Non-H	H(model)	H(added)	Clashes	Symm-Clashes
1	A	5223	0	5108	80	0
2	A	25	0	12	2	0
3	A	31	0	13	7	0
4	A	1	0	0	0	0
5	A	42	0	0	1	0
All	All	5322	0	5133	82	0

Clashscore is defined as the number of clashes calculated for the entry per 1000 atoms (including hydrogens) of the entry. The overall clashscore for this entry is 8.

All (82) close contacts within the same asymmetric unit are listed below.

Atom-1	Atom-2	Distance(Å)	Clash(Å)
1:A:106:ASN:HB3	1:A:109:THR:HG22	1.46	0.97
1:A:619:GLU:O	1:A:620:CYS:HB3	1.66	0.93
1:A:417:LYS:HE3	1:A:574:MET:HE1	1.60	0.82
1:A:291:ASN:CB	1:A:293:ARG:HG2	2.13	0.77
1:A:619:GLU:O	1:A:620:CYS:CB	2.30	0.76
1:A:393:LEU:HD22	1:A:724:LEU:HD13	1.69	0.74
1:A:109:THR:HG23	1:A:111:LYS:H	1.54	0.73
1:A:251:HIS:HB3	1:A:424:SER:HB3	1.71	0.73
1:A:227:SER:HA	3:A:890:ANP:O2A	1.89	0.72
1:A:291:ASN:HB3	1:A:293:ARG:HG2	1.72	0.70
1:A:337:LEU:HG	1:A:368:GLU:HG2	1.76	0.68
1:A:291:ASN:HB2	1:A:293:ARG:HG2	1.77	0.67
1:A:166:ARG:HB2	1:A:169:HIS:ND1	2.09	0.67
1:A:220:LEU:HB2	1:A:441:ALA:HB3	1.77	0.67
1:A:520:ARG:NH2	1:A:648:ASP:OD2	2.28	0.67
1:A:383:ILE:HG13	1:A:384:LYS:H	1.61	0.65

Continued on next page...

Continued from previous page...

Atom-1	Atom-2	Distance(Å)	Clash(Å)
1:A:608:THR:N	2:A:889:CDP:O1A	2.29	0.64
1:A:227:SER:CB	3:A:890:ANP:O2A	2.46	0.63
1:A:396:GLN:HG3	1:A:402:PRO:HD2	1.81	0.62
1:A:106:ASN:HB3	1:A:109:THR:CG2	2.25	0.62
1:A:131:LEU:O	1:A:135:ILE:HD12	2.00	0.61
1:A:606:MET:HB2	1:A:607:PRO:HD2	1.83	0.61
1:A:217:SER:HB3	2:A:889:CDP:H4'	1.82	0.60
1:A:211:PRO:O	1:A:213:PRO:HD3	2.03	0.59
1:A:94:PHE:HD1	1:A:169:HIS:HD2	1.51	0.58
1:A:560:PHE:CZ	1:A:596:GLY:HA2	2.38	0.58
1:A:534:GLN:O	1:A:538:THR:HG23	2.04	0.58
1:A:396:GLN:HG3	1:A:402:PRO:CD	2.34	0.57
1:A:383:ILE:CG1	1:A:384:LYS:H	2.18	0.56
1:A:120:VAL:HG21	1:A:209:GLY:HA2	1.86	0.55
1:A:447:SER:HB3	1:A:606:MET:CE	2.38	0.54
1:A:227:SER:CA	3:A:890:ANP:O2A	2.54	0.54
1:A:505:ILE:HG22	1:A:602:THR:HA	1.90	0.53
1:A:213:PRO:HD2	1:A:489:TYR:HB2	1.92	0.52
1:A:482:ASN:HD22	1:A:599:ASN:HD21	1.57	0.52
1:A:740:MET:SD	1:A:743:LEU:HB2	2.51	0.51
1:A:227:SER:HB2	3:A:890:ANP:O2A	2.10	0.51
1:A:181:ARG:O	1:A:183:ILE:HD12	2.10	0.51
1:A:396:GLN:CG	1:A:402:PRO:HD2	2.41	0.51
1:A:334:ILE:HD12	1:A:404:VAL:HG13	1.93	0.51
1:A:524:ASP:HB3	1:A:694:THR:HG21	1.93	0.50
1:A:338:PHE:O	1:A:342:VAL:HG23	2.11	0.50
1:A:713:ASN:ND2	1:A:742:TYR:HB2	2.26	0.49
1:A:724:LEU:HD21	1:A:740:MET:HE1	1.93	0.48
1:A:270:ASN:HB3	1:A:274:PRO:HG2	1.94	0.48
1:A:505:ILE:HD12	1:A:599:ASN:ND2	2.29	0.47
1:A:428:CYS:HB2	1:A:430:GLU:OE2	2.13	0.47
1:A:447:SER:HB3	1:A:606:MET:HE1	1.97	0.47
1:A:604:ALA:HB2	1:A:708:GLN:HB2	1.97	0.46
1:A:713:ASN:HD22	1:A:713:ASN:HA	1.61	0.45
1:A:288:GLN:O	1:A:291:ASN:HB2	2.16	0.45
1:A:140:ASP:OD2	1:A:168:GLN:HG2	2.15	0.45
1:A:485:ILE:HD13	1:A:503:ARG:HB3	1.98	0.45
1:A:522:PRO:HG2	1:A:525:SER:HB3	1.99	0.45
1:A:323:ILE:O	1:A:323:ILE:HG22	2.17	0.44
1:A:287:ASP:HA	5:A:923:HOH:O	2.17	0.44
1:A:686:THR:CG2	1:A:688:TRP:HD1	2.31	0.44
1:A:160:ASN:C	1:A:162:GLN:H	2.20	0.44

Continued on next page...

Continued from previous page...

Atom-1	Atom-2	Distance(Å)	Clash(Å)
1:A:383:ILE:HG13	1:A:384:LYS:N	2.28	0.43
1:A:490:TYR:HA	1:A:491:PRO:HD3	1.90	0.43
1:A:530:LEU:O	1:A:534:GLN:HG3	2.18	0.43
1:A:214:GLN:NE2	1:A:216:SER:H	2.16	0.43
1:A:383:ILE:CG1	1:A:384:LYS:N	2.82	0.43
1:A:534:GLN:O	1:A:538:THR:CG2	2.65	0.43
3:A:890:ANP:C8	3:A:890:ANP:C4'	2.97	0.43
1:A:383:ILE:HG12	1:A:387:LYS:HD3	2.00	0.43
1:A:745:THR:HG23	1:A:746:GLN:NE2	2.33	0.43
1:A:538:THR:HB	1:A:583:TRP:NE1	2.34	0.42
1:A:445:LEU:HD23	1:A:606:MET:HG3	2.01	0.42
1:A:145:TYR:O	1:A:149:LYS:HG2	2.19	0.42
1:A:149:LYS:O	1:A:153:ARG:HB3	2.19	0.42
3:A:890:ANP:C8	3:A:890:ANP:H4'	2.50	0.42
1:A:726:SER:O	1:A:730:TYR:HB2	2.20	0.42
1:A:218:CYS:O	1:A:442:VAL:HA	2.20	0.42
1:A:538:THR:HB	1:A:583:TRP:HE1	1.86	0.41
1:A:363:TYR:HB2	1:A:408:ASP:OD1	2.21	0.41
1:A:484:VAL:O	1:A:488:ASN:HB2	2.21	0.41
1:A:94:PHE:CD1	1:A:169:HIS:HD2	2.35	0.40
1:A:214:GLN:HE22	1:A:216:SER:CB	2.34	0.40
1:A:345:ASN:HD22	1:A:386:GLN:CD	2.24	0.40
1:A:746:GLN:HB3	1:A:746:GLN:HE21	1.68	0.40
1:A:227:SER:HA	3:A:890:ANP:H5'2	2.03	0.40

There are no symmetry-related clashes.

5.3 Torsion angles

5.3.1 Protein backbone ⓘ

In the following table, the Percentiles column shows the percent Ramachandran outliers of the chain as a percentile score with respect to all X-ray entries followed by that with respect to entries of similar resolution. The Analysed column shows the number of residues for which the backbone conformation was analysed, and the total number of residues.

Mol	Chain	Analysed	Favoured	Allowed	Outliers	Percentiles
1	A	655/888 (74%)	621 (95%)	24 (4%)	10 (2%)	15 46

All (10) Ramachandran outliers are listed below:

Mol	Chain	Res	Type
1	A	457	SER
1	A	459	ASP
1	A	294	PRO
1	A	620	CYS
1	A	667	ASN
1	A	741	TYR
1	A	639	GLN
1	A	717	ARG
1	A	460	GLY
1	A	161	GLY

5.3.2 Protein sidechains ⓘ

In the following table, the Percentiles column shows the percent sidechain outliers of the chain as a percentile score with respect to all X-ray entries followed by that with respect to entries of similar resolution. The Analysed column shows the number of residues for which the sidechain conformation was analysed, and the total number of residues.

Mol	Chain	Analysed	Rotameric	Outliers	Percentiles	
1	A	561/761 (74%)	517 (92%)	44 (8%)	18	45

All (44) residues with a non-rotameric sidechain are listed below:

Mol	Chain	Res	Type
1	A	131	LEU
1	A	153	ARG
1	A	176	LEU
1	A	195	LEU
1	A	214	GLN
1	A	220	LEU
1	A	244	THR
1	A	268	THR
1	A	293	ARG
1	A	301	LEU
1	A	314	ILE
1	A	320	LYS
1	A	337	LEU
1	A	359	LEU
1	A	361	ASP
1	A	388	LEU
1	A	443	CYS
1	A	459	ASP

Continued on next page...

Continued from previous page...

Mol	Chain	Res	Type
1	A	462	THR
1	A	503	ARG
1	A	505	ILE
1	A	512	LEU
1	A	514	ASP
1	A	518	LEU
1	A	520	ARG
1	A	530	LEU
1	A	538	THR
1	A	606	MET
1	A	610	SER
1	A	621	PHE
1	A	638	PHE
1	A	647	ARG
1	A	656	ASP
1	A	665	THR
1	A	667	ASN
1	A	686	THR
1	A	711	SER
1	A	712	LEU
1	A	713	ASN
1	A	714	LEU
1	A	720	THR
1	A	721	MET
1	A	724	LEU
1	A	746	GLN

Some sidechains can be flipped to improve hydrogen bonding and reduce clashes. All (9) such sidechains are listed below:

Mol	Chain	Res	Type
1	A	168	GLN
1	A	214	GLN
1	A	251	HIS
1	A	345	ASN
1	A	444	ASN
1	A	482	ASN
1	A	692	GLN
1	A	713	ASN
1	A	746	GLN

5.3.3 RNA ⓘ

There are no RNA chains in this entry.

5.4 Non-standard residues in protein, DNA, RNA chains ⓘ

There are no non-standard protein/DNA/RNA residues in this entry.

5.5 Carbohydrates ⓘ

There are no carbohydrates in this entry.

5.6 Ligand geometry ⓘ

Of 3 ligands modelled in this entry, 1 is monoatomic - leaving 2 for Mogul analysis.

In the following table, the Counts columns list the number of bonds (or angles) for which Mogul statistics could be retrieved, the number of bonds (or angles) that are observed in the model and the number of bonds (or angles) that are defined in the chemical component dictionary. The Link column lists molecule types, if any, to which the group is linked. The Z score for a bond length (or angle) is the number of standard deviations the observed value is removed from the expected value. A bond length (or angle) with $|Z| > 2$ is considered an outlier worth inspection. RMSZ is the root-mean-square of all Z scores of the bond lengths (or angles).

Mol	Type	Chain	Res	Link	Bond lengths			Bond angles		
					Counts	RMSZ	# $ Z > 2$	Counts	RMSZ	# $ Z > 2$
2	CDP	A	889	-	26,26,26	1.86	8 (30%)	37,40,40	1.32	3 (8%)
3	ANP	A	890	4	33,33,33	3.06	6 (18%)	51,52,52	2.26	11 (21%)

In the following table, the Chirals column lists the number of chiral outliers, the number of chiral centers analysed, the number of these observed in the model and the number defined in the chemical component dictionary. Similar counts are reported in the Torsion and Rings columns. '-' means no outliers of that kind were identified.

Mol	Type	Chain	Res	Link	Chirals	Torsions	Rings
2	CDP	A	889	-	-	0/14/32/32	0/2/2/2
3	ANP	A	890	4	1/1/7/8	0/18/38/38	0/1/3/3

All (14) bond length outliers are listed below:

Mol	Chain	Res	Type	Atoms	Z	Observed(Å)	Ideal(Å)
3	A	890	ANP	PB-N3B	11.11	1.74	1.64

Continued on next page...

Continued from previous page...

Mol	Chain	Res	Type	Atoms	Z	Observed(Å)	Ideal(Å)
3	A	890	ANP	PG-N3B	10.65	1.73	1.64
3	A	890	ANP	PG-O1G	4.38	1.51	1.46
3	A	890	ANP	PB-O1B	4.04	1.51	1.46
2	A	889	CDP	C6-N1	3.99	1.42	1.35
2	A	889	CDP	PB-O1B	3.76	1.63	1.51
3	A	890	ANP	C5-C4	3.47	1.48	1.40
2	A	889	CDP	O4'-C1'	3.27	1.46	1.41
2	A	889	CDP	C4-N3	3.06	1.41	1.35
2	A	889	CDP	C2-N1	3.02	1.41	1.38
2	A	889	CDP	PB-O2B	2.72	1.64	1.54
3	A	890	ANP	C4-N9	-2.66	1.33	1.37
2	A	889	CDP	C2-N3	2.33	1.41	1.35
2	A	889	CDP	PB-O3A	2.15	1.63	1.60

All (14) bond angle outliers are listed below:

Mol	Chain	Res	Type	Atoms	Z	Observed(°)	Ideal(°)
3	A	890	ANP	PB-N3B-PG	-6.70	118.79	130.07
3	A	890	ANP	N3-C2-N1	-5.89	123.78	128.71
3	A	890	ANP	C4'-O4'-C1'	-5.84	103.40	109.75
3	A	890	ANP	N3-C4-N9	5.17	134.78	125.43
2	A	889	CDP	C6-C5-C4	5.14	119.60	117.47
3	A	890	ANP	O2B-PB-O1B	4.54	120.36	109.89
3	A	890	ANP	O1G-PG-N3B	-4.38	105.21	111.83
2	A	889	CDP	C2-N3-C4	3.30	120.35	115.57
3	A	890	ANP	C3'-C2'-C1'	3.26	106.00	100.91
3	A	890	ANP	O3G-PG-O2G	2.95	116.11	107.66
3	A	890	ANP	C5-C4-N3	-2.89	119.41	125.70
3	A	890	ANP	C4-C5-N7	-2.53	107.36	109.52
3	A	890	ANP	C2-N3-C4	2.20	120.27	114.01
2	A	889	CDP	N4-C4-N3	2.05	120.53	116.59

All (1) chirality outliers are listed below:

Mol	Chain	Res	Type	Atom
3	A	890	ANP	C4'

There are no torsion outliers.

There are no ring outliers.

5.7 Other polymers ⓘ

There are no such residues in this entry.

5.8 Polymer linkage issues

There are no chain breaks in this entry.

6 Fit of model and data ⓘ

6.1 Protein, DNA and RNA chains ⓘ

In the following table, the column labelled ‘#RSRZ> 2’ contains the number (and percentage) of RSRZ outliers, followed by percent RSRZ outliers for the chain as percentile scores relative to all X-ray entries and entries of similar resolution. The OWAB column contains the minimum, median, 95th percentile and maximum values of the occupancy-weighted average B-factor per residue. The column labelled ‘Q< 0.9’ lists the number of (and percentage) of residues with an average occupancy less than 0.9.

Mol	Chain	Analysed	<RSRZ>	#RSRZ>2	OWAB(Å ²)	Q<0.9
1	A	659/888 (74%)	0.17	33 (5%) 28 28	30, 44, 75, 87	3 (0%)

All (33) RSRZ outliers are listed below:

Mol	Chain	Res	Type	RSRZ
1	A	638	PHE	5.8
1	A	294	PRO	5.2
1	A	146	PHE	5.1
1	A	457	SER	4.8
1	A	145	TYR	4.5
1	A	165	GLU	4.5
1	A	639	GLN	4.3
1	A	659	MET	4.3
1	A	293	ARG	3.5
1	A	459	ASP	3.2
1	A	718	ALA	3.0
1	A	163	VAL	3.0
1	A	82	ALA	2.7
1	A	458	GLU	2.7
1	A	81	ILE	2.6
1	A	162	GLN	2.6
1	A	462	THR	2.5
1	A	266	ASN	2.5
1	A	727	MET	2.4
1	A	721	MET	2.4
1	A	654	ILE	2.3
1	A	604	ALA	2.3
1	A	390	TYR	2.3
1	A	321	GLU	2.3
1	A	605	PRO	2.2
1	A	429	CYS	2.2
1	A	319	GLY	2.2

Continued on next page...

Continued from previous page...

Mol	Chain	Res	Type	RSRZ
1	A	318	HIS	2.1
1	A	461	LYS	2.1
1	A	119	ASP	2.1
1	A	164	ALA	2.1
1	A	660	LYS	2.1
1	A	651	ASP	2.1

6.2 Non-standard residues in protein, DNA, RNA chains ⓘ

There are no non-standard protein/DNA/RNA residues in this entry.

6.3 Carbohydrates ⓘ

There are no carbohydrates in this entry.

6.4 Ligands ⓘ

In the following table, the Atoms column lists the number of modelled atoms in the group and the number defined in the chemical component dictionary. LLDF column lists the quality of electron density of the group with respect to its neighbouring residues in protein, DNA or RNA chains. The B-factors column lists the minimum, median, 95th percentile and maximum values of B factors of atoms in the group. The column labelled 'Q< 0.9' lists the number of atoms with occupancy less than 0.9.

Mol	Type	Chain	Res	Atoms	RSR	LLDF	B-factors(Å ²)	Q<0.9
4	MG	A	891	1/1	0.27	21.35	42,42,42,42	0
2	CDP	A	889	25/25	0.27	1.22	78,80,82,83	0
3	ANP	A	890	31/31	0.15	-0.33	45,48,50,52	0

6.5 Other polymers ⓘ

There are no such residues in this entry.