



Full wwPDB X-ray Structure Validation Report

Feb 26, 2014 – 02:41 PM GMT

PDB ID : 1SDK
Title : CROSS-LINKED, CARBONMONOXY HEMOGLOBIN A
Authors : Schumacher, M.A.; Dixon, M.M.; Kluger, R.; Jones, R.T.; Brennan, R.G.
Deposited on : 1996-02-26
Resolution : 1.80 Å(reported)

This is a full wwPDB validation report for a publicly released PDB entry.
We welcome your comments at validation@mail.wwpdb.org
A user guide is available at <http://wwpdb.org/ValidationPDFNotes.html>

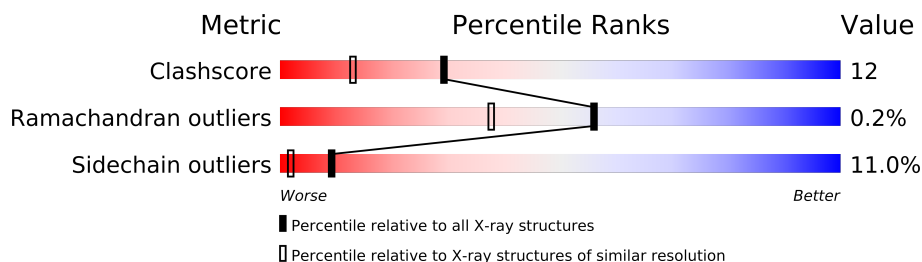
The following versions of software and data (see [references](#)) were used in the production of this report:

MolProbity : 4.02b-467
Mogul : 1.15 2013
Xtriage (Phenix) : **NOT EXECUTED**
EDS : **NOT EXECUTED**
Percentile statistics : 21963
Ideal geometry (proteins) : Engh & Huber (2001)
Ideal geometry (DNA, RNA) : Parkinson et. al. (1996)
Validation Pipeline (wwPDB-VP) : stable22683

1 Overall quality at a glance

The reported resolution of this entry is 1.80 Å.

Percentile scores (ranging between 0-100) for global validation metrics of the entry are shown in the following graphic. The table shows the number of entries on which the scores are based.



Metric	Whole archive (#Entries)	Similar resolution (#Entries, resolution range(Å))
Clashscore	79885	4461 (1.80-1.80)
Ramachandran outliers	78287	4404 (1.80-1.80)
Sidechain outliers	78261	4403 (1.80-1.80)

The table below summarises the geometric issues observed across the polymeric chains and their fit to the electron density. The red, orange, yellow and green segments on the lower bar indicate the fraction of residues that contain outliers for ≥ 3 , 2, 1 and 0 types of geometric quality criteria. The upper red bar (where present) indicates the fraction of residues that have poor fit to the electron density.

Note EDS was not executed.

Mol	Chain	Length	Quality of chain
1	A	141	
1	C	141	
2	B	146	
2	D	146	

2 Entry composition

There are 6 unique types of molecules in this entry. The entry contains 5015 atoms, of which 0 are hydrogen and 0 are deuterium.

In the tables below, the ZeroOcc column contains the number of atoms modelled with zero occupancy, the AltConf column contains the number of residues with at least one atom in alternate conformation and the Trace column contains the number of residues modelled with at most 2 atoms.

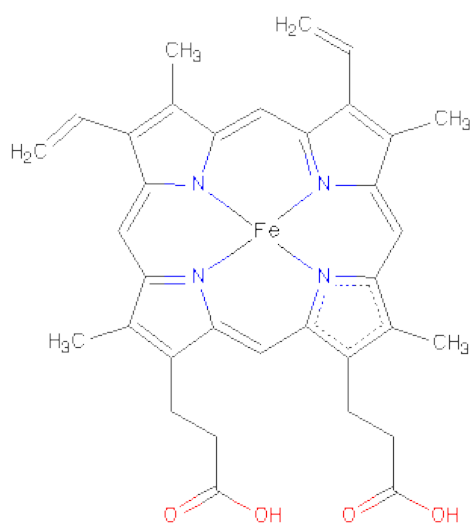
- Molecule 1 is a protein called HEMOGLOBIN A.

Mol	Chain	Residues	Atoms					ZeroOcc	AltConf	Trace
1	A	141	Total	C	N	O	S	0	0	0
			1069	685	187	194	3			
1	C	141	Total	C	N	O	S	0	0	0
			1069	685	187	194	3			

- Molecule 2 is a protein called HEMOGLOBIN A.

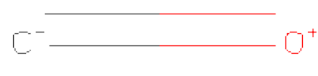
Mol	Chain	Residues	Atoms					ZeroOcc	AltConf	Trace
2	B	146	Total	C	N	O	S	0	0	0
			1123	724	195	201	3			
2	D	146	Total	C	N	O	S	0	0	0
			1123	724	195	201	3			

- Molecule 3 is PROTOPORPHYRIN IX CONTAINING FE (three-letter code: HEM) (formula: $C_{34}H_{32}FeN_4O_4$).



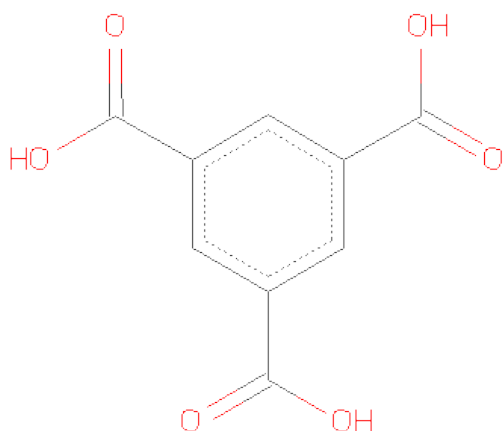
Mol	Chain	Residues	Atoms					ZeroOcc	AltConf
3	A	1	Total	C	Fe	N	O	0	0
			43	34	1	4	4		
3	B	1	Total	C	Fe	N	O	0	0
			43	34	1	4	4		
3	C	1	Total	C	Fe	N	O	0	0
			43	34	1	4	4		
3	D	1	Total	C	Fe	N	O	0	0
			43	34	1	4	4		

- Molecule 4 is CARBON MONOXIDE (three-letter code: CMO) (formula: CO).



Mol	Chain	Residues	Atoms			ZeroOcc	AltConf
4	A	1	Total	C	O	0	0
			2	1	1		
4	B	1	Total	C	O	0	0
			2	1	1		
4	C	1	Total	C	O	0	0
			2	1	1		
4	D	1	Total	C	O	0	0
			2	1	1		

- Molecule 5 is 1,3,5-BENZENETRICARBOXYLICACID (three-letter code: TMM) (formula: C₉H₆O₆).



Mol	Chain	Residues	Atoms			ZeroOcc	AltConf
5	D	1	Total	C	O	0	0
			12	9	3		

- Molecule 6 is water.

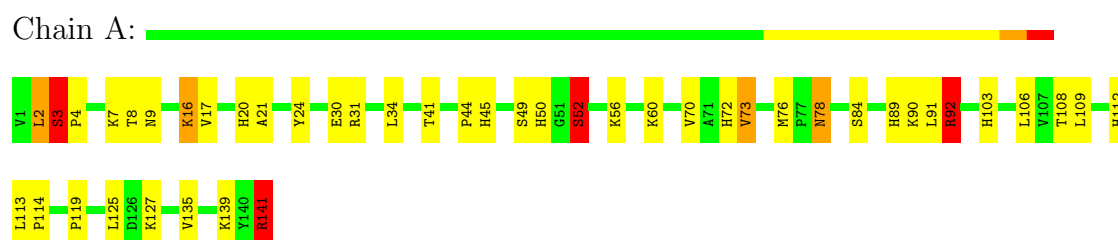
Mol	Chain	Residues	Atoms		ZeroOcc	AltConf
6	A	102	Total	O	0	0
			102	102		
6	B	118	Total	O	0	0
			118	118		
6	C	99	Total	O	0	0
			99	99		
6	D	120	Total	O	0	0
			120	120		

3 Residue-property plots

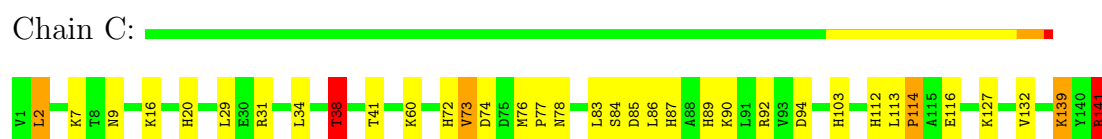
These plots are drawn for all protein, RNA and DNA chains in the entry. The first graphic for a chain summarises the proportions of errors displayed in the second graphic. The second graphic shows the sequence view annotated by issues in geometry and electron density. Residues are color-coded according to the number of geometric quality criteria for which they contain at least one outlier: green = 0, yellow = 1, orange = 2 and red = 3 or more. A red dot above a residue indicates a poor fit to the electron density ($RSRZ > 2$). Stretches of 2 or more consecutive residues without any outlier are shown as a green connector. Residues present in the sample, but not in the model, are shown in grey.

Note EDS was not executed.

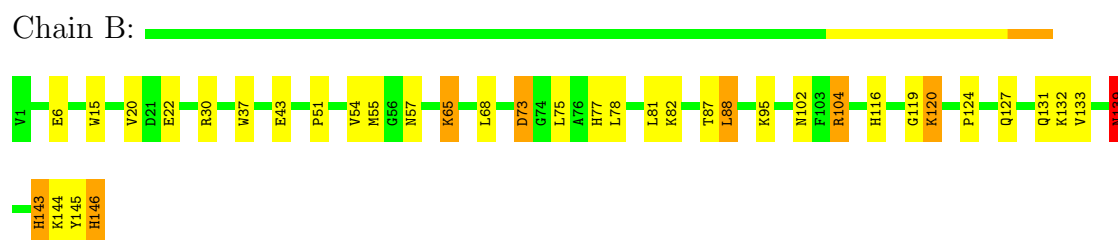
• Molecule 1: HEMOGLOBIN A



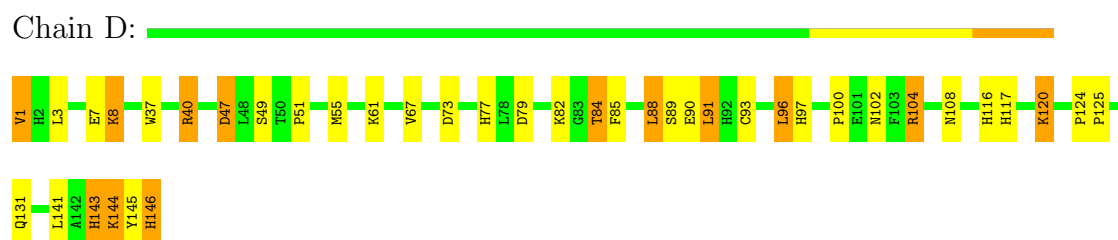
• Molecule 1: HEMOGLOBIN A



• Molecule 2: HEMOGLOBIN A



• Molecule 2: HEMOGLOBIN A



4 Data and refinement statistics

Xtriage (Phenix) and EDS were not executed - this section will therefore be incomplete.

Property	Value	Source
Space group	C 1 2 1	Depositor
Cell constants a, b, c, α , β , γ	104.43Å 72.16Å 88.03Å 90.00° 108.25° 90.00°	Depositor
Resolution (Å)	8.00 – 1.80	Depositor
% Data completeness (in resolution range)	(Not available) (8.00-1.80)	Depositor
R_{merge}	(Not available)	Depositor
R_{sym}	(Not available)	Depositor
Refinement program	TNT	Depositor
R, R_{free}	0.139 , (Not available)	Depositor
Estimated twinning fraction	No twinning to report.	Xtriage
Total number of atoms	5015	wwPDB-VP
Average B, all atoms (Å ²)	24.0	wwPDB-VP

5 Model quality

5.1 Standard geometry

Bond lengths and bond angles in the following residue types are not validated in this section: CMO, HEM, TMM

The Z score for a bond length (or angle) is the number of standard deviations the observed value is removed from the expected value. A bond length (or angle) with $|Z| > 5$ is considered an outlier worth inspection. RMSZ is the root-mean-square of all Z scores of the bond lengths (or angles).

Mol	Chain	Bond lengths		Bond angles	
		RMSZ	# Z >5	RMSZ	# Z >5
1	A	1.13	2/1097 (0.2%)	1.34	12/1491 (0.8%)
1	C	1.15	4/1097 (0.4%)	1.22	6/1491 (0.4%)
2	B	1.11	2/1153 (0.2%)	1.27	5/1566 (0.3%)
2	D	1.16	2/1153 (0.2%)	1.23	7/1566 (0.4%)
All	All	1.13	10/4500 (0.2%)	1.27	30/6114 (0.5%)

Chiral center outliers are detected by calculating the chiral volume of a chiral center and verifying if the center is modelled as a planar moiety or with the opposite hand. A planarity outlier is detected by checking planarity of atoms in a peptide group, atoms in a mainchain group or atoms of a sidechain that are expected to be planar.

Mol	Chain	#Chirality outliers	#Planarity outliers
1	A	0	1
1	C	1	0
2	B	0	1
2	D	2	0
All	All	3	2

All (10) bond length outliers are listed below:

Mol	Chain	Res	Type	Atoms	Z	Observed(Å)	Ideal(Å)
2	B	22	GLU	CG-CD	6.04	1.61	1.51
2	D	8	LYS	CB-CG	-5.77	1.36	1.52
2	B	139	ASN	CB-CG	-5.65	1.38	1.51
1	C	132	VAL	CB-CG1	5.60	1.64	1.52
1	A	20	HIS	CA-CB	-5.58	1.41	1.53
2	D	67	VAL	CB-CG1	5.50	1.64	1.52
1	C	132	VAL	CB-CG2	5.49	1.64	1.52
1	C	87	HIS	CA-CB	5.10	1.65	1.53
1	A	78	ASN	CB-CG	5.02	1.62	1.51
1	C	20	HIS	CA-CB	-5.02	1.43	1.53

All (30) bond angle outliers are listed below:

Mol	Chain	Res	Type	Atoms	Z	Observed(°)	Ideal(°)
1	A	2	LEU	CA-C-N	-9.15	97.06	117.20
2	B	30	ARG	NE-CZ-NH2	-8.77	115.92	120.30
2	B	30	ARG	NE-CZ-NH1	7.71	124.16	120.30
2	D	1	VAL	CB-CA-C	6.86	124.43	111.40
1	A	21	ALA	CB-CA-C	6.73	120.19	110.10
2	B	82	LYS	CD-CE-NZ	-6.59	96.54	111.70
1	A	141	ARG	NE-CZ-NH1	6.54	123.57	120.30
2	D	40	ARG	NE-CZ-NH1	6.40	123.50	120.30
1	C	94	ASP	CB-CG-OD1	6.29	123.96	118.30
1	A	2	LEU	CB-CA-C	6.25	122.07	110.20
1	C	29	LEU	CB-CG-CD1	-6.05	100.72	111.00
1	A	91	LEU	CB-CG-CD2	-5.75	101.22	111.00
1	A	92	ARG	NE-CZ-NH1	5.72	123.16	120.30
1	C	31	ARG	NE-CZ-NH1	5.68	123.14	120.30
1	C	38	THR	OG1-CB-CG2	5.56	122.78	110.00
2	D	96	LEU	CB-CG-CD2	-5.48	101.69	111.00
1	A	3	SER	N-CA-CB	-5.48	102.29	110.50
2	D	40	ARG	NE-CZ-NH2	-5.42	117.59	120.30
1	A	106	LEU	CB-CG-CD2	5.39	120.17	111.00
1	C	34	LEU	CB-CG-CD2	-5.35	101.90	111.00
2	D	47	ASP	CB-CA-C	5.29	120.97	110.40
2	D	96	LEU	CA-CB-CG	-5.28	103.16	115.30
2	D	146	HIS	N-CA-C	5.26	125.20	111.00
1	A	2	LEU	N-CA-CB	5.23	120.87	110.40
2	B	20	VAL	CB-CA-C	-5.22	101.49	111.40
1	C	141	ARG	CB-CA-C	5.20	120.80	110.40
1	A	72	HIS	CB-CA-C	-5.12	100.16	110.40
1	A	141	ARG	NE-CZ-NH2	-5.08	117.76	120.30
1	A	7	LYS	CB-CA-C	-5.07	100.27	110.40
2	B	54	VAL	CB-CA-C	-5.05	101.80	111.40

All (3) chirality outliers are listed below:

Mol	Chain	Res	Type	Atom
1	C	38	THR	CB
2	D	1	VAL	CA
2	D	146	HIS	CA

All (2) planarity outliers are listed below:

Mol	Chain	Res	Type	Group
1	A	2	LEU	Mainchain
2	B	139	ASN	Sidechain

5.2 Close contacts ⓘ

In the following table, the Non-H and H(model) columns list the number of non-hydrogen atoms and hydrogen atoms in the chain respectively. The H(added) column lists the number of hydrogens added by MolProbity. The Clashes column lists the number of clashes within the asymmetric unit, and the number in parentheses is this value normalized per 1000 atoms of the molecule in the chain. The Symm-Clashes column gives symmetry related clashes, in the same way as for the Clashes column.

Mol	Chain	Non-H	H(model)	H(added)	Clashes	Symm-Clashes
1	A	1069	0	1073	33	2
1	C	1069	0	1073	26	0
2	B	1123	0	1116	30	1
2	D	1123	0	1113	38	0
3	A	43	0	30	0	0
3	B	43	0	30	0	0
3	C	43	0	30	1	0
3	D	43	0	30	2	0
4	A	2	0	0	0	0
4	B	2	0	0	0	0
4	C	2	0	0	0	0
4	D	2	0	0	0	0
5	D	12	0	3	0	0
6	A	102	0	0	10	2
6	B	118	0	0	7	0
6	C	99	0	0	5	1
6	D	120	0	0	10	1
All	All	5015	0	4498	112	4

Clashscore is defined as the number of clashes calculated for the entry per 1000 atoms (including hydrogens) of the entry. The overall clashscore for this entry is 12.

All (112) close contacts within the same asymmetric unit are listed below.

Atom-1	Atom-2	Distance(Å)	Clash(Å)
1:A:92:ARG:HH11	1:A:92:ARG:HG3	1.07	1.07
1:A:127:LYS:HE3	1:C:141:ARG:HD2	1.53	0.90
1:A:92:ARG:NH1	1:A:92:ARG:HG3	1.80	0.89
2:D:79:ASP:HB3	6:D:352:HOH:O	1.73	0.88
2:B:119:GLY:HA3	2:B:120:LYS:HE2	1.56	0.88

Continued on next page...

Continued from previous page...

Atom-1	Atom-2	Distance(Å)	Clash(Å)
1:A:127:LYS:HE3	1:C:141:ARG:CD	2.07	0.85
6:A:272:HOH:O	2:B:124:PRO:HA	1.75	0.84
2:B:132:LYS:HA	2:D:146:HIS:HE1	1.46	0.81
2:B:120:LYS:H	2:B:120:LYS:CD	1.95	0.78
2:D:120:LYS:HE3	6:D:386:HOH:O	1.86	0.75
1:A:31:ARG:HG2	6:A:272:HOH:O	1.87	0.74
2:D:97:HIS:ND1	6:D:350:HOH:O	2.22	0.73
2:D:117:HIS:NE2	6:D:356:HOH:O	2.22	0.73
1:C:103:HIS:HE1	2:D:131:GLN:OE1	1.71	0.72
2:B:51:PRO:O	2:B:55:MET:HG2	1.90	0.71
2:D:61:LYS:HB3	6:D:331:HOH:O	1.91	0.71
1:A:49:SER:O	1:A:52:SER:HB3	1.91	0.71
2:B:132:LYS:HA	2:D:146:HIS:CE1	2.27	0.70
2:B:120:LYS:HE2	2:B:120:LYS:H	1.56	0.70
1:A:31:ARG:NH1	6:A:272:HOH:O	2.26	0.69
1:A:141:ARG:C	1:C:127:LYS:HD3	2.13	0.68
2:B:120:LYS:CE	2:B:120:LYS:H	2.07	0.66
1:C:112:HIS:O	1:C:113:LEU:HD23	1.96	0.65
2:D:55:MET:HE3	6:D:405:HOH:O	1.95	0.65
2:B:143:HIS:CD2	6:B:212:HOH:O	2.50	0.64
2:B:57:ASN:ND2	6:B:285:HOH:O	2.28	0.64
1:A:103:HIS:HE1	2:B:131:GLN:OE1	1.81	0.64
2:B:143:HIS:HB3	6:B:239:HOH:O	1.98	0.62
2:B:146:HIS:OXT	2:D:1:VAL:HG22	2.00	0.62
1:C:73:VAL:HG12	1:C:74:ASP:OD1	2.00	0.62
2:D:93:CYS:HB2	2:D:145:TYR:CE1	2.34	0.61
1:A:112:HIS:O	1:A:113:LEU:HD23	2.01	0.61
2:D:84:THR:HG23	6:D:353:HOH:O	2.01	0.60
2:B:75:LEU:HD21	2:B:133:VAL:HG11	1.85	0.59
2:D:144:LYS:N	2:D:144:LYS:HZ3	2.00	0.59
1:A:108:THR:O	1:A:112:HIS:HD2	1.87	0.58
2:D:141:LEU:CD1	3:D:200:HEM:CBB	2.83	0.57
2:B:104:ARG:NH1	6:B:282:HOH:O	2.38	0.57
2:D:144:LYS:HA	2:D:144:LYS:NZ	2.19	0.56
2:D:120:LYS:N	2:D:120:LYS:HD3	2.20	0.56
1:A:103:HIS:HD2	6:A:227:HOH:O	1.89	0.56
1:C:7:LYS:HG2	1:C:73:VAL:HG11	1.86	0.56
2:D:91:LEU:HD22	2:D:91:LEU:O	2.05	0.56
2:D:73:ASP:O	2:D:77:HIS:HD2	1.89	0.56
2:D:108:ASN:ND2	6:D:344:HOH:O	2.38	0.55
1:C:86:LEU:CD2	3:C:200:HEM:HBA2	2.38	0.54
2:D:143:HIS:C	2:D:144:LYS:HZ3	2.12	0.53

Continued on next page...

Continued from previous page...

Atom-1	Atom-2	Distance(Å)	Clash(Å)
2:B:43:GLU:OE2	1:C:92:ARG:NH2	2.34	0.53
2:D:3:LEU:HA	2:D:7:GLU:OE1	2.10	0.52
2:B:144:LYS:HA	2:B:144:LYS:HE2	1.90	0.52
6:B:202:HOH:O	1:C:38:THR:HG23	2.09	0.52
2:D:141:LEU:HD12	3:D:200:HEM:CBB	2.40	0.51
2:D:84:THR:HG22	2:D:85:PHE:CD2	2.46	0.51
1:A:34:LEU:HD13	6:A:296:HOH:O	2.11	0.51
1:C:2:LEU:HD23	1:C:2:LEU:N	2.27	0.50
6:A:272:HOH:O	2:B:127:GLN:HB3	2.12	0.50
6:B:202:HOH:O	1:C:38:THR:CG2	2.58	0.50
2:D:89:SER:OG	2:D:144:LYS:HG2	2.12	0.50
2:B:120:LYS:HE2	2:B:120:LYS:N	2.26	0.50
1:A:70:VAL:O	1:A:73:VAL:HG22	2.12	0.50
2:D:144:LYS:HZ2	2:D:144:LYS:HA	1.76	0.49
1:A:89:HIS:NE2	1:A:139:LYS:HG3	2.28	0.49
2:B:119:GLY:CA	2:B:120:LYS:HE2	2.36	0.48
1:C:73:VAL:O	1:C:73:VAL:HG13	2.13	0.48
1:A:17:VAL:HG13	1:A:24:TYR:CD2	2.48	0.47
1:C:38:THR:HG22	6:C:266:HOH:O	2.14	0.47
2:D:100:PRO:HB2	2:D:104:ARG:HH12	1.81	0.46
2:D:91:LEU:HD22	2:D:91:LEU:C	2.36	0.46
2:B:73:ASP:O	2:B:77:HIS:HD2	1.99	0.46
2:B:145:TYR:O	2:B:146:HIS:HB3	2.16	0.46
2:B:65:LYS:HE3	2:B:65:LYS:HB2	1.61	0.46
1:A:56:LYS:HG3	6:A:263:HOH:O	2.15	0.45
1:C:103:HIS:CE1	2:D:131:GLN:OE1	2.61	0.45
1:A:41:THR:HG21	2:D:40:ARG:HH12	1.82	0.44
1:A:41:THR:CG2	2:D:40:ARG:HH12	2.30	0.44
1:A:89:HIS:NE2	1:A:139:LYS:CG	2.80	0.44
2:D:37:TRP:HE1	2:D:102:ASN:HD21	1.64	0.44
1:A:139:LYS:HA	1:A:139:LYS:HD2	1.67	0.43
1:A:16:LYS:H	1:A:16:LYS:HG2	1.02	0.43
1:C:89:HIS:CE1	1:C:139:LYS:HD2	2.53	0.43
2:D:96:LEU:O	2:D:97:HIS:HB2	2.19	0.43
1:A:135:VAL:HG23	6:A:250:HOH:O	2.18	0.43
1:A:44:PRO:HG2	1:A:45:HIS:N	2.34	0.43
1:C:114:PRO:HA	2:D:116:HIS:CD2	2.53	0.43
1:A:44:PRO:HG2	1:A:45:HIS:H	1.83	0.43
1:C:89:HIS:CE1	1:C:139:LYS:CD	3.01	0.43
1:A:76:MET:HE2	6:A:292:HOH:O	2.18	0.43
2:B:37:TRP:HE1	2:B:102:ASN:HD21	1.65	0.43
1:A:114:PRO:HA	2:B:116:HIS:CD2	2.54	0.42

Continued on next page...

Continued from previous page...

Atom-1	Atom-2	Distance(Å)	Clash(Å)
2:D:88:LEU:HD12	2:D:88:LEU:HA	1.85	0.42
2:B:73:ASP:O	2:B:77:HIS:CD2	2.73	0.42
1:A:30:GLU:OE2	1:A:50:HIS:CD2	2.72	0.42
2:D:84:THR:CA	6:D:353:HOH:O	2.67	0.42
2:D:144:LYS:CA	2:D:144:LYS:NZ	2.83	0.42
2:D:146:HIS:HB2	6:D:355:HOH:O	2.19	0.42
1:C:127:LYS:HE2	6:C:290:HOH:O	2.19	0.41
1:A:45:HIS:N	1:A:45:HIS:ND1	2.66	0.41
1:C:9:ASN:HD22	1:C:9:ASN:HA	1.60	0.41
2:B:75:LEU:HA	2:B:75:LEU:HD23	1.86	0.41
1:C:116:GLU:HB2	6:C:217:HOH:O	2.20	0.41
2:D:124:PRO:HB2	2:D:125:PRO:HD3	2.02	0.41
1:A:3:SER:HA	1:A:4:PRO:HD3	1.92	0.41
1:C:89:HIS:HB3	6:C:208:HOH:O	2.20	0.41
2:B:15:TRP:HD1	6:B:314:HOH:O	2.03	0.41
1:C:2:LEU:HA	1:C:2:LEU:HD22	1.84	0.41
1:A:109:LEU:HD12	1:A:125:LEU:HD13	2.03	0.41
2:B:78:LEU:HA	2:B:78:LEU:HD23	1.85	0.41
1:A:127:LYS:NZ	6:A:253:HOH:O	2.29	0.40
1:C:72:HIS:HE1	6:C:262:HOH:O	2.04	0.40
1:C:76:MET:HB2	1:C:77:PRO:HD3	2.04	0.40
1:A:127:LYS:HE3	1:C:141:ARG:HD3	1.99	0.40
2:B:88:LEU:HA	2:B:88:LEU:HD12	1.92	0.40

All (4) symmetry-related close contacts are listed below. The label for Atom-2 includes the symmetry operator and encoded unit-cell translations to be applied.

Atom-1	Atom-2	Distance(Å)	Clash(Å)
1:A:8:THR:CG2	6:A:267:HOH:O[4_555]	0.71	1.49
6:D:408:HOH:O	6:D:408:HOH:O[2_655]	1.80	0.40
1:A:8:THR:CB	6:A:267:HOH:O[4_555]	1.95	0.25
2:B:6:GLU:OE1	6:C:228:HOH:O[3_445]	2.13	0.07

5.3 Torsion angles

5.3.1 Protein backbone ⓘ

In the following table, the Percentiles column shows the percent Ramachandran outliers of the chain as a percentile score with respect to all X-ray entries followed by that with respect to entries of similar resolution. The Analysed column shows the number of residues for which the backbone conformation was analysed, and the total number of residues.

Mol	Chain	Analysed	Favoured	Allowed	Outliers	Percentiles	
1	A	139/141 (99%)	129 (93%)	9 (6%)	1 (1%)	30	13
1	C	139/141 (99%)	138 (99%)	1 (1%)	0	100	100
2	B	144/146 (99%)	142 (99%)	2 (1%)	0	100	100
2	D	144/146 (99%)	142 (99%)	2 (1%)	0	100	100
All	All	566/574 (99%)	551 (97%)	14 (2%)	1 (0%)	56	38

All (1) Ramachandran outliers are listed below:

Mol	Chain	Res	Type
1	A	52	SER

5.3.2 Protein sidechains ⓘ

In the following table, the Percentiles column shows the percent sidechain outliers of the chain as a percentile score with respect to all X-ray entries followed by that with respect to entries of similar resolution. The Analysed column shows the number of residues for which the sidechain conformation was analysed, and the total number of residues.

Mol	Chain	Analysed	Rotameric	Outliers	Percentiles	
1	A	113/113 (100%)	101 (89%)	12 (11%)	10	2
1	C	113/113 (100%)	99 (88%)	14 (12%)	7	1
2	B	118/118 (100%)	106 (90%)	12 (10%)	11	2
2	D	118/118 (100%)	105 (89%)	13 (11%)	9	2
All	All	462/462 (100%)	411 (89%)	51 (11%)	9	2

All (51) residues with a non-rotameric sidechain are listed below:

Mol	Chain	Res	Type
1	A	3	SER
1	A	9	ASN
1	A	16	LYS
1	A	52	SER
1	A	60	LYS
1	A	73	VAL
1	A	78	ASN
1	A	84	SER
1	A	90	LYS
1	A	92	ARG
1	A	119	PRO

Continued on next page...

Continued from previous page...

Mol	Chain	Res	Type
1	A	141	ARG
2	B	65	LYS
2	B	68	LEU
2	B	73	ASP
2	B	81	LEU
2	B	87	THR
2	B	88	LEU
2	B	95	LYS
2	B	104	ARG
2	B	120	LYS
2	B	139	ASN
2	B	143	HIS
2	B	146	HIS
1	C	2	LEU
1	C	16	LYS
1	C	38	THR
1	C	41	THR
1	C	60	LYS
1	C	73	VAL
1	C	78	ASN
1	C	83	LEU
1	C	84	SER
1	C	85	ASP
1	C	90	LYS
1	C	114	PRO
1	C	139	LYS
1	C	141	ARG
2	D	8	LYS
2	D	47	ASP
2	D	49	SER
2	D	51	PRO
2	D	82	LYS
2	D	84	THR
2	D	88	LEU
2	D	90	GLU
2	D	91	LEU
2	D	104	ARG
2	D	120	LYS
2	D	143	HIS
2	D	144	LYS

Some sidechains can be flipped to improve hydrogen bonding and reduce clashes. All (17) such sidechains are listed below:

Mol	Chain	Res	Type
1	A	9	ASN
1	A	50	HIS
1	A	97	ASN
1	A	103	HIS
2	B	77	HIS
2	B	102	ASN
2	B	108	ASN
1	C	9	ASN
1	C	68	ASN
1	C	97	ASN
1	C	103	HIS
2	D	77	HIS
2	D	80	ASN
2	D	97	HIS
2	D	102	ASN
2	D	108	ASN
2	D	146	HIS

5.3.3 RNA ⓘ

There are no RNA chains in this entry.

5.4 Non-standard residues in protein, DNA, RNA chains ⓘ

There are no non-standard protein/DNA/RNA residues in this entry.

5.5 Carbohydrates ⓘ

There are no carbohydrates in this entry.

5.6 Ligand geometry ⓘ

9 ligands are modelled in this entry.

In the following table, the Counts columns list the number of bonds (or angles) for which Mogul statistics could be retrieved, the number of bonds (or angles) that are observed in the model and the number of bonds (or angles) that are defined in the chemical component dictionary. The Link column lists molecule types, if any, to which the group is linked. The Z score for a bond length (or angle) is the number of standard deviations the observed value is removed from the expected value. A bond length (or angle) with $|Z| > 2$ is considered an outlier worth inspection. RMSZ is the root-mean-square of all Z scores of the bond lengths (or angles).

Mol	Type	Chain	Res	Link	Bond lengths			Bond angles		
					Counts	RMSZ	# Z > 2	Counts	RMSZ	# Z > 2
3	HEM	A	200	1,4	49,50,50	2.85	15 (30%)	46,82,82	2.15	13 (28%)
4	CMO	A	201	3	0,1,1	0.00	-	0,0,0	0.00	-
3	HEM	B	200	2,4	49,50,50	4.07	16 (32%)	46,82,82	2.00	15 (32%)
4	CMO	B	201	3	0,1,1	0.00	-	0,0,0	0.00	-
3	HEM	C	200	1,4	49,50,50	2.82	15 (30%)	46,82,82	2.41	16 (34%)
4	CMO	C	201	3	0,1,1	0.00	-	0,0,0	0.00	-
3	HEM	D	200	2,4	49,50,50	2.93	18 (36%)	46,82,82	2.26	18 (39%)
4	CMO	D	201	3	0,1,1	0.00	-	0,0,0	0.00	-
5	TMM	D	300	2	12,12,15	1.97	3 (25%)	6,15,21	0.49	0

In the following table, the Chirals column lists the number of chiral outliers, the number of chiral centers analysed, the number of these observed in the model and the number defined in the chemical component dictionary. Similar counts are reported in the Torsion and Rings columns. '-' means no outliers of that kind were identified.

Mol	Type	Chain	Res	Link	Chirals	Torsions	Rings
3	HEM	A	200	1,4	-	0/14/114/114	0/0/8/8
4	CMO	A	201	3	-	0/0/0/0	0/0/0/0
3	HEM	B	200	2,4	-	0/14/114/114	0/0/8/8
4	CMO	B	201	3	-	0/0/0/0	0/0/0/0
3	HEM	C	200	1,4	-	0/14/114/114	0/0/8/8
4	CMO	C	201	3	-	0/0/0/0	0/0/0/0
3	HEM	D	200	2,4	-	0/14/114/114	0/0/8/8
4	CMO	D	201	3	-	0/0/0/0	0/0/0/0
5	TMM	D	300	2	-	0/0/6/12	0/1/1/1

All (67) bond length outliers are listed below:

Mol	Chain	Res	Type	Atoms	Z	Observed(Å)	Ideal(Å)
3	B	200	HEM	C2D-C1D	18.54	1.49	1.44
3	D	200	HEM	C2D-C1D	11.62	1.47	1.44
3	C	200	HEM	C2B-C1B	10.80	1.47	1.44
3	B	200	HEM	C3D-C4D	-10.79	1.41	1.44
3	A	200	HEM	C2D-C1D	10.71	1.47	1.44
3	B	200	HEM	C2B-C1B	-9.97	1.42	1.44
3	A	200	HEM	C3D-C2D	-7.11	1.31	1.43
3	D	200	HEM	C3D-C2D	-6.63	1.32	1.43
3	B	200	HEM	C4A-C3A	6.58	1.48	1.40
3	C	200	HEM	C3D-C2D	-6.41	1.32	1.43
3	A	200	HEM	C3C-C2C	-6.23	1.32	1.43
3	A	200	HEM	C4A-C3A	5.93	1.47	1.40

Continued on next page...

Continued from previous page...

Mol	Chain	Res	Type	Atoms	Z	Observed(Å)	Ideal(Å)
3	D	200	HEM	C3C-C2C	-5.79	1.33	1.43
3	D	200	HEM	C2B-C1B	5.67	1.46	1.44
3	A	200	HEM	C3B-C2B	-5.40	1.34	1.43
3	C	200	HEM	C3C-C2C	-5.40	1.34	1.43
3	B	200	HEM	C3B-C2B	-5.21	1.34	1.43
3	C	200	HEM	C3B-C2B	-5.14	1.34	1.43
3	B	200	HEM	C3C-C2C	-5.07	1.34	1.43
3	B	200	HEM	C3B-CAB	5.02	1.56	1.40
3	D	200	HEM	C3B-CAB	5.00	1.56	1.40
3	B	200	HEM	C3D-C2D	-4.94	1.35	1.43
3	C	200	HEM	C3D-C4D	-4.92	1.43	1.44
3	C	200	HEM	C3C-CAC	4.67	1.55	1.40
3	B	200	HEM	C3C-CAC	4.67	1.55	1.40
3	D	200	HEM	C3B-C2B	-4.57	1.35	1.43
3	C	200	HEM	C3B-CAB	4.49	1.54	1.40
3	D	200	HEM	C4A-C3A	4.45	1.45	1.40
3	A	200	HEM	C3B-CAB	4.31	1.54	1.40
3	D	200	HEM	C3C-CAC	4.17	1.53	1.40
3	A	200	HEM	C3C-CAC	4.14	1.53	1.40
3	D	200	HEM	C3B-C4B	3.77	1.48	1.44
3	A	200	HEM	CHB-C1B	3.75	1.41	1.35
3	C	200	HEM	C4A-C3A	3.65	1.44	1.40
3	D	200	HEM	FE-NA	3.48	2.07	1.92
3	C	200	HEM	C2D-C1D	-3.45	1.43	1.44
5	D	300	TMM	C5-C5A	3.41	1.52	1.41
3	B	200	HEM	FE-NA	3.35	2.06	1.92
5	D	300	TMM	C3-C3A	3.34	1.52	1.41
3	A	200	HEM	C2B-C1B	-3.27	1.43	1.44
3	C	200	HEM	CMC-C2C	3.25	1.57	1.47
5	D	300	TMM	C1-C1A	3.19	1.52	1.41
3	A	200	HEM	CMD-C2D	3.09	1.57	1.47
3	A	200	HEM	CAA-C2A	3.08	1.57	1.52
3	C	200	HEM	CMA-C3A	3.03	1.58	1.51
3	A	200	HEM	FE-NA	3.02	2.05	1.92
3	C	200	HEM	CMB-C2B	2.97	1.56	1.47
3	B	200	HEM	CMD-C2D	2.92	1.56	1.47
3	C	200	HEM	CHA-C4D	2.84	1.39	1.35
3	D	200	HEM	C3D-C4D	-2.79	1.43	1.44
3	B	200	HEM	CMB-C2B	2.61	1.55	1.47
3	B	200	HEM	C4C-NC	-2.51	1.34	1.38
3	D	200	HEM	CMA-C3A	2.48	1.56	1.51
3	C	200	HEM	FE-NA	2.46	2.02	1.92

Continued on next page...

Continued from previous page...

Mol	Chain	Res	Type	Atoms	Z	Observed(Å)	Ideal(Å)
3	B	200	HEM	C3B-C4B	-2.42	1.41	1.44
3	A	200	HEM	C1A-NA	2.40	1.41	1.36
3	D	200	HEM	CMD-C2D	2.37	1.54	1.47
3	D	200	HEM	FE-NC	2.25	2.06	1.97
3	B	200	HEM	CHB-C1B	2.25	1.39	1.35
3	B	200	HEM	CMC-C2C	2.21	1.54	1.47
3	A	200	HEM	CMC-C2C	2.16	1.54	1.47
3	C	200	HEM	C1C-NC	2.15	1.41	1.38
3	D	200	HEM	C1A-C2A	2.11	1.47	1.43
3	D	200	HEM	CMB-C2B	2.10	1.53	1.47
3	D	200	HEM	CHB-C1B	2.09	1.38	1.35
3	D	200	HEM	CMC-C2C	2.03	1.53	1.47
3	A	200	HEM	CHA-C4D	2.02	1.38	1.35

All (62) bond angle outliers are listed below:

Mol	Chain	Res	Type	Atoms	Z	Observed(°)	Ideal(°)
3	A	200	HEM	C3B-C4B-NB	-9.38	107.29	114.00
3	C	200	HEM	C3B-C4B-NB	-8.76	107.73	114.00
3	D	200	HEM	C3B-C4B-NB	-6.51	109.34	114.00
3	C	200	HEM	C4A-C3A-C2A	-5.06	103.48	107.00
3	D	200	HEM	C2D-C1D-ND	-4.43	107.69	112.93
3	C	200	HEM	C1A-C2A-C3A	4.43	111.51	106.92
3	D	200	HEM	CBA-CAA-C2A	-4.36	105.01	112.69
3	B	200	HEM	CBD-CAD-C3D	-4.35	104.87	114.37
3	C	200	HEM	CHD-C1D-ND	4.14	128.02	124.58
3	B	200	HEM	CMA-C3A-C4A	-4.09	122.34	128.62
3	B	200	HEM	C3B-C4B-NB	-4.00	111.14	114.00
3	C	200	HEM	C2D-C1D-ND	-3.93	108.28	112.93
3	A	200	HEM	CMA-C3A-C4A	-3.82	122.74	128.62
3	B	200	HEM	CBA-CAA-C2A	-3.80	106.00	112.69
3	D	200	HEM	CHC-C1C-NC	-3.79	121.44	124.73
3	D	200	HEM	CBD-CAD-C3D	-3.75	106.19	114.37
3	B	200	HEM	CMA-C3A-C2A	3.54	131.61	124.94
3	C	200	HEM	O1D-CGD-CBD	-3.54	110.87	123.03
3	D	200	HEM	CHD-C4C-NC	-3.35	121.82	124.73
3	B	200	HEM	C1A-CHA-C4D	-3.33	123.09	127.47
3	A	200	HEM	CBD-CAD-C3D	-3.31	107.16	114.37
3	D	200	HEM	C1A-C2A-C3A	3.30	110.33	106.92
3	A	200	HEM	CHB-C1B-NB	3.18	128.67	124.31
3	C	200	HEM	CBD-CAD-C3D	-3.15	107.49	114.37
3	B	200	HEM	O2A-CGA-O1A	3.12	131.24	123.30

Continued on next page...

Continued from previous page...

Mol	Chain	Res	Type	Atoms	Z	Observed(°)	Ideal(°)
3	A	200	HEM	C1B-NB-C4B	3.10	108.33	105.16
3	D	200	HEM	CMC-C2C-C3C	3.09	133.45	126.16
3	D	200	HEM	CHC-C4B-NB	-3.09	122.02	124.58
3	D	200	HEM	C4A-C3A-C2A	-3.04	104.88	107.00
3	C	200	HEM	C1A-CHA-C4D	-2.89	123.67	127.47
3	B	200	HEM	CAD-C3D-C4D	-2.87	119.37	124.53
3	C	200	HEM	O1A-CGA-CBA	-2.81	113.37	123.03
3	B	200	HEM	C1A-C2A-C3A	2.77	109.79	106.92
3	C	200	HEM	C4D-ND-C1D	2.77	108.00	105.16
3	A	200	HEM	CMB-C2B-C3B	2.71	132.54	126.16
3	B	200	HEM	CHA-C4D-ND	2.70	128.02	124.31
3	A	200	HEM	C4A-CHB-C1B	-2.68	123.95	127.47
3	B	200	HEM	C2D-C1D-ND	-2.65	109.81	112.93
3	D	200	HEM	CHA-C4D-ND	2.59	127.86	124.31
3	A	200	HEM	C2D-C1D-ND	-2.57	109.89	112.93
3	A	200	HEM	O1D-CGD-CBD	-2.53	114.31	123.03
3	B	200	HEM	O1D-CGD-CBD	-2.52	114.36	123.03
3	A	200	HEM	C4A-C3A-C2A	2.51	108.74	107.00
3	A	200	HEM	CAD-C3D-C4D	2.49	129.01	124.53
3	C	200	HEM	CMD-C2D-C3D	2.48	131.21	125.60
3	B	200	HEM	C4C-NC-C1C	2.47	108.10	105.53
3	B	200	HEM	CMB-C2B-C3B	2.46	131.96	126.16
3	D	200	HEM	CMA-C3A-C2A	2.39	129.45	124.94
3	D	200	HEM	C3A-C4A-NA	2.33	111.17	109.41
3	C	200	HEM	O2D-CGD-O1D	2.32	129.20	123.30
3	A	200	HEM	O1A-CGA-CBA	-2.29	115.15	123.03
3	C	200	HEM	CMB-C2B-C3B	2.26	131.48	126.16
3	C	200	HEM	C2A-C1A-NA	-2.18	106.71	109.73
3	B	200	HEM	O1A-CGA-CBA	-2.15	115.64	123.03
3	D	200	HEM	O1D-CGD-CBD	-2.14	115.68	123.03
3	A	200	HEM	O2D-CGD-O1D	2.14	128.73	123.30
3	D	200	HEM	CHB-C1B-NB	2.12	127.22	124.31
3	C	200	HEM	CMA-C3A-C2A	2.10	128.90	124.94
3	D	200	HEM	C4B-CHC-C1C	2.07	132.01	126.57
3	D	200	HEM	CMA-C3A-C4A	-2.05	125.47	128.62
3	D	200	HEM	C1A-CHA-C4D	-2.05	124.78	127.47
3	C	200	HEM	C1B-NB-C4B	2.05	107.26	105.16

There are no chirality outliers.

There are no torsion outliers.

There are no ring outliers.

5.7 Other polymers ⓘ

There are no such residues in this entry.

5.8 Polymer linkage issues

There are no chain breaks in this entry.

6 Fit of model and data ⓘ

6.1 Protein, DNA and RNA chains ⓘ

EDS was not executed - this section will therefore be empty.

6.2 Non-standard residues in protein, DNA, RNA chains ⓘ

EDS was not executed - this section will therefore be empty.

6.3 Carbohydrates ⓘ

EDS was not executed - this section will therefore be empty.

6.4 Ligands ⓘ

EDS was not executed - this section will therefore be empty.

6.5 Other polymers ⓘ

EDS was not executed - this section will therefore be empty.