



Full wwPDB X-ray Structure Validation Report ⓘ

Feb 28, 2014 – 01:20 AM GMT

PDB ID : 3SDF
Title : Crystal Structure of C-lobe of Bovine lactoferrin Complexed with Lipoteichoic acid at 2.1 Å Resolution
Authors : Shukla, P.K.; Gautam, L.; Sinha, M.; Bhushan, A.; Kaur, P.; Sharma, S.; Singh, T.P.
Deposited on : 2011-06-09
Resolution : 2.10 Å(reported)

This is a full wwPDB validation report for a publicly released PDB entry.
We welcome your comments at validation@mail.wwpdb.org
A user guide is available at <http://wwpdb.org/ValidationPDFNotes.html>

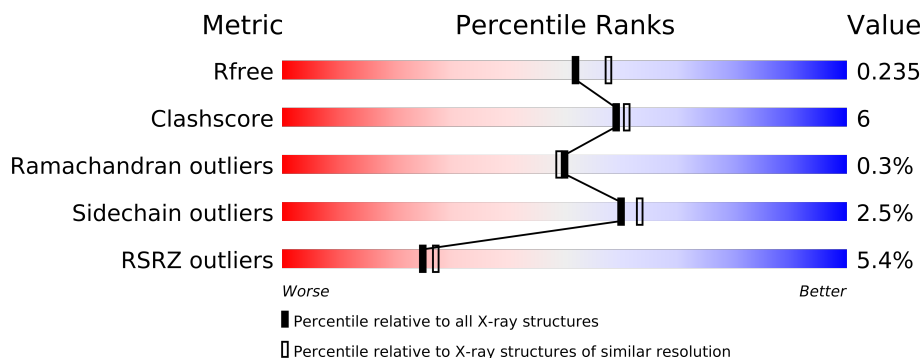
The following versions of software and data (see [references](#)) were used in the production of this report:

MolProbity : 4.02b-467
Mogul : 1.15 2013
Xtriage (Phenix) : dev-1323
EDS : stable22639
Percentile statistics : 21963
Refmac : 5.8.0049
CCP4 : 6.3.0 (Settle)
Ideal geometry (proteins) : Engh & Huber (2001)
Ideal geometry (DNA, RNA) : Parkinson et. al. (1996)
Validation Pipeline (wwPDB-VP) : stable22683

1 Overall quality at a glance

The reported resolution of this entry is 2.10 Å.

Percentile scores (ranging between 0-100) for global validation metrics of the entry are shown in the following graphic. The table shows the number of entries on which the scores are based.



Metric	Whole archive (#Entries)	Similar resolution (#Entries, resolution range(Å))
R_{free}	66092	3012 (2.10-2.10)
Clashscore	79885	3649 (2.10-2.10)
Ramachandran outliers	78287	3610 (2.10-2.10)
Sidechain outliers	78261	3611 (2.10-2.10)
RSRZ outliers	66119	3013 (2.10-2.10)

The table below summarises the geometric issues observed across the polymeric chains and their fit to the electron density. The red, orange, yellow and green segments on the lower bar indicate the fraction of residues that contain outliers for ≥ 3 , 2, 1 and 0 types of geometric quality criteria. The upper red bar (where present) indicates the fraction of residues that have poor fit to the electron density.

Mol	Chain	Length	Quality of chain
1	A	345	

The following table lists non-polymeric compounds that are outliers for geometric or electron-density-fit criteria:

Mol	Type	Chain	Res	Geometry	Electron density
5	SO4	A	692	-	X

2 Entry composition

There are 10 unique types of molecules in this entry. The entry contains 3038 atoms, of which 0 are hydrogen and 0 are deuterium.

In the tables below, the ZeroOcc column contains the number of atoms modelled with zero occupancy, the AltConf column contains the number of residues with at least one atom in alternate conformation and the Trace column contains the number of residues modelled with at most 2 atoms.

- Molecule 1 is a protein called Lactotransferrin.

Mol	Chain	Residues	Atoms					ZeroOcc	AltConf	Trace
1	A	341	Total	C	N	O	S	0	0	0
			2604	1622	454	507	21			

There are 2 discrepancies between the modelled and reference sequences:

Chain	Residue	Modelled	Actual	Comment	Reference
A	565	LYS	ASN	SEE REMARK 999	UNP P24627
A	608	GLU	LYS	SEE REMARK 999	UNP P24627

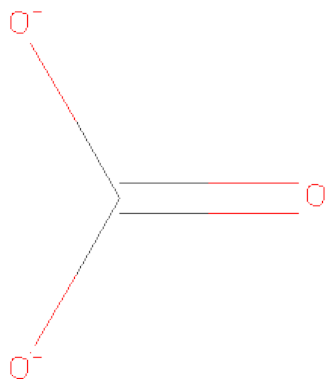
- Molecule 2 is ZINC ION (three-letter code: ZN) (formula: Zn).

Mol	Chain	Residues	Atoms		ZeroOcc	AltConf
2	A	2	Total	Zn	0	0
			2	2		

- Molecule 3 is FE (III) ION (three-letter code: FE) (formula: Fe).

Mol	Chain	Residues	Atoms		ZeroOcc	AltConf
3	A	1	Total	Fe	0	0
			1	1		

- Molecule 4 is CARBONATE ION (three-letter code: CO3) (formula: CO₃).



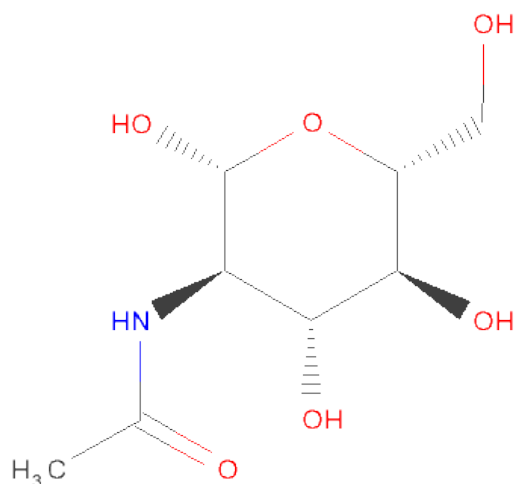
Mol	Chain	Residues	Atoms			ZeroOcc	AltConf
4	A	1	Total	C	O	0	0
			4	1	3		

- Molecule 5 is SULFATE ION (three-letter code: SO4) (formula: O₄S).



Mol	Chain	Residues	Atoms			ZeroOcc	AltConf
5	A	1	Total	O	S	0	0
			5	4	1		

- Molecule 6 is SUGAR (N-ACETYL-D-GLUCOSAMINE) (three-letter code: NAG) (formula: C₈H₁₅NO₆).



Mol	Chain	Residues	Atoms				ZeroOcc	AltConf
6	A	1	Total	C	N	O	0	0
			14	8	1	5		

- Molecule 7 is a polymer of unknown type called SUGAR (3-MER).

Mol	Chain	Residues	Atoms				ZeroOcc	AltConf
7	A	3	Total	C	N	O	0	0
			39	22	2	15		

There are 2 discrepancies between the modelled and reference sequences:

Chain	Residue	Modelled	Actual	Comment	Reference
A	565	LYS	ASN	SEE REMARK 999	UNP P24627
A	608	GLU	LYS	SEE REMARK 999	UNP P24627

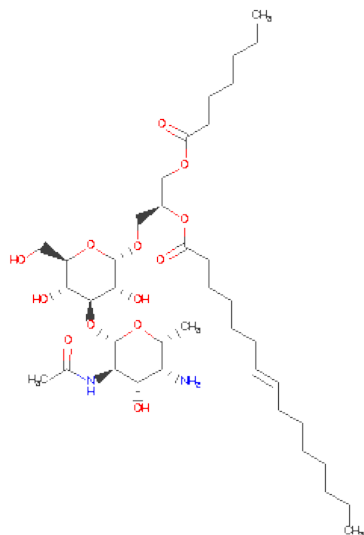
- Molecule 8 is a polymer of unknown type called SUGAR (2-MER).

Mol	Chain	Residues	Atoms				ZeroOcc	AltConf
8	A	2	Total	C	N	O	0	0
			28	16	2	10		

There are 2 discrepancies between the modelled and reference sequences:

Chain	Residue	Modelled	Actual	Comment	Reference
A	565	LYS	ASN	SEE REMARK 999	UNP P24627
A	608	GLU	LYS	SEE REMARK 999	UNP P24627

- Molecule 9 is (2S)-1-({3-O-[2-(ACETYLAMINO)-4-AMINO-2,4,6-TRIDEOXY-BETA-D-GALACTOPYRANOSYL]-ALPHA-D-GLUCOPYRANOSYL}OXY)-3-(HEPTANOYLOXY)PROPAN-2-YL(7Z)-PENTADEC-7-ENOATE (three-letter code: LTC) (formula: $C_{39}H_{70}N_2O_{13}$).



Mol	Chain	Residues	Atoms				ZeroOcc	AltConf
9	A	1	Total	C	N	O	0	0
			54	39	2	13		

- Molecule 10 is water.

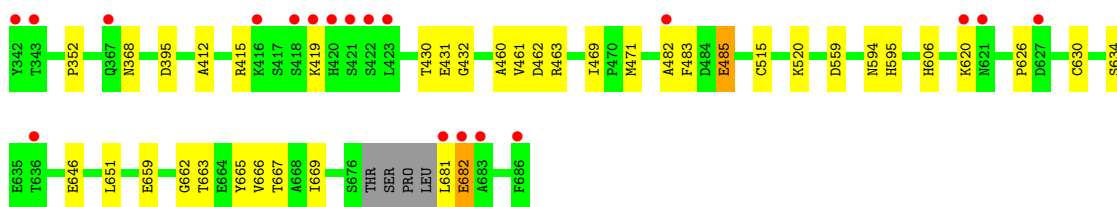
Mol	Chain	Residues	Atoms		ZeroOcc	AltConf
10	A	287	Total	O	0	0
			287	287		

3 Residue-property plots

These plots are drawn for all protein, RNA and DNA chains in the entry. The first graphic for a chain summarises the proportions of errors displayed in the second graphic. The second graphic shows the sequence view annotated by issues in geometry and electron density. Residues are color-coded according to the number of geometric quality criteria for which they contain at least one outlier: green = 0, yellow = 1, orange = 2 and red = 3 or more. A red dot above a residue indicates a poor fit to the electron density ($\text{RSRZ} > 2$). Stretches of 2 or more consecutive residues without any outlier are shown as a green connector. Residues present in the sample, but not in the model, are shown in grey.

- Molecule 1: Lactotransferrin

Chain A:



4 Data and refinement statistics

Property	Value	Source
Space group	P 1 21 1	Depositor
Cell constants a, b, c, α , β , γ	63.42Å 50.40Å 65.94Å 90.00° 107.72° 90.00°	Depositor
Resolution (Å)	62.00 – 2.10 39.31 – 2.10	Depositor EDS
% Data completeness (in resolution range)	95.7 (62.00-2.10) 95.8 (39.31-2.10)	Depositor EDS
R_{merge}	0.00	Depositor
R_{sym}	0.06	Depositor
$\langle I/\sigma(I) \rangle$ ¹	2.14 (at 2.10Å)	Xtriage
Refinement program	REFMAC 5.5.0109	Depositor
R, R_{free}	0.197 , 0.234 0.199 , 0.235	Depositor DCC
R_{free} test set	1167 reflections (5.49%)	DCC
Wilson B-factor (Å ²)	32.0	Xtriage
Anisotropy	0.188	Xtriage
Bulk solvent k_{sol} (e/Å ³), B_{sol} (Å ²)	0.35 , 50.5	EDS
Estimated twinning fraction	0.028 for l,-k,h	Xtriage
L-test for twinning	$\langle L \rangle = 0.48$, $\langle L^2 \rangle = 0.31$	Xtriage
Outliers	0 of 22451 reflections	Xtriage
F_o, F_c correlation	0.95	EDS
Total number of atoms	3038	wwPDB-VP
Average B, all atoms (Å ²)	36.0	wwPDB-VP

Xtriage's analysis on translational NCS is as follows: *The largest off-origin peak in the Patterson function is 6.47% of the height of the origin peak. No significant pseudotranslation is detected.*

¹Intensities estimated from amplitudes.

5 Model quality

5.1 Standard geometry

Bond lengths and bond angles in the following residue types are not validated in this section: ZN, BMA, NAG, CO3, LTC, FE, SO4

The Z score for a bond length (or angle) is the number of standard deviations the observed value is removed from the expected value. A bond length (or angle) with $|Z| > 5$ is considered an outlier worth inspection. RMSZ is the root-mean-square of all Z scores of the bond lengths (or angles).

Mol	Chain	Bond lengths		Bond angles	
		RMSZ	# Z >5	RMSZ	# Z >5
1	A	0.35	0/2652	0.53	0/3591

There are no bond length outliers.

There are no bond angle outliers.

There are no chirality outliers.

There are no planarity outliers.

5.2 Close contacts

In the following table, the Non-H and H(model) columns list the number of non-hydrogen atoms and hydrogen atoms in the chain respectively. The H(added) column lists the number of hydrogens added by MolProbity. The Clashes column lists the number of clashes within the asymmetric unit, and the number in parentheses is this value normalized per 1000 atoms of the molecule in the chain. The Symm-Clashes column gives symmetry related clashes, in the same way as for the Clashes column.

Mol	Chain	Non-H	H(model)	H(added)	Clashes	Symm-Clashes
1	A	2604	0	2519	28	0
2	A	2	0	0	0	0
3	A	1	0	0	0	0
4	A	4	0	0	0	0
5	A	5	0	0	0	0
6	A	14	0	13	3	0
7	A	39	0	34	1	0
8	A	28	0	25	0	0
9	A	54	0	70	12	0
10	A	287	0	0	0	0
All	All	3038	0	2661	33	0

Clashscore is defined as the number of clashes calculated for the entry per 1000 atoms (including hydrogens) of the entry. The overall clashscore for this entry is 6.

All (33) close contacts within the same asymmetric unit are listed below.

Atom-1	Atom-2	Distance(Å)	Clash(Å)
1:A:368:ASN:HD21	6:A:1:NAG:C1	1.82	0.91
1:A:659:GLU:O	9:A:172:LTC:H17A	1.70	0.91
1:A:662:GLY:HA2	9:A:172:LTC:H15	1.65	0.78
1:A:663:THR:HG22	9:A:172:LTC:H14A	1.66	0.75
1:A:662:GLY:O	1:A:666:VAL:HG23	1.88	0.74
1:A:471:MET:CE	1:A:483:PHE:HB2	2.20	0.70
9:A:172:LTC:H20	9:A:172:LTC:H49B	1.76	0.66
1:A:352:PRO:HG2	1:A:520:LYS:HD3	1.78	0.66
1:A:415:ARG:NH2	1:A:432:GLY:O	2.35	0.59
1:A:431:GLU:O	9:A:172:LTC:H47A	2.04	0.58
1:A:368:ASN:HD21	6:A:1:NAG:C2	2.17	0.57
1:A:482:ALA:HB1	1:A:485:GLU:HG3	1.87	0.56
1:A:471:MET:HE3	1:A:483:PHE:HB2	1.88	0.56
9:A:172:LTC:H1	9:A:172:LTC:C26	2.39	0.53
1:A:626:PRO:HA	1:A:630:CYS:SG	2.50	0.51
1:A:430:THR:HB	1:A:594:ASN:ND2	2.26	0.51
1:A:681:LEU:HB2	1:A:682:GLU:OE2	2.12	0.49
9:A:172:LTC:H49	9:A:172:LTC:H14	1.94	0.49
9:A:172:LTC:H26	9:A:172:LTC:H1	1.95	0.48
1:A:471:MET:HE2	1:A:483:PHE:HB2	1.94	0.48
1:A:352:PRO:CG	1:A:520:LYS:HD3	2.42	0.48
1:A:461:VAL:O	1:A:462:ASP:HB2	2.13	0.48
1:A:432:GLY:HA3	9:A:172:LTC:H47	1.96	0.47
9:A:172:LTC:H21	9:A:172:LTC:H24	1.67	0.47
1:A:460:ALA:HB3	1:A:463:ARG:HD3	1.96	0.47
1:A:663:THR:H	9:A:172:LTC:H14A	1.80	0.47
1:A:368:ASN:ND2	6:A:1:NAG:C1	2.63	0.46
1:A:620:LYS:HD3	1:A:646:GLU:HG3	1.99	0.45
1:A:667:THR:HG21	7:A:4:NAG:H2	2.00	0.43
1:A:665:TYR:CE2	1:A:669:ILE:HD11	2.54	0.42
1:A:412:ALA:HB2	1:A:651:LEU:HD21	2.02	0.41
1:A:432:GLY:HA3	9:A:172:LTC:C47	2.50	0.41
1:A:395:ASP:HA	1:A:595:HIS:CD2	2.55	0.41

There are no symmetry-related clashes.

5.3 Torsion angles

5.3.1 Protein backbone ⓘ

In the following table, the Percentiles column shows the percent Ramachandran outliers of the chain as a percentile score with respect to all X-ray entries followed by that with respect to entries of similar resolution. The Analysed column shows the number of residues for which the backbone conformation was analysed, and the total number of residues.

Mol	Chain	Analysed	Favoured	Allowed	Outliers	Percentiles	
1	A	337/345 (98%)	318 (94%)	18 (5%)	1 (0%)	50	49

All (1) Ramachandran outliers are listed below:

Mol	Chain	Res	Type
1	A	634	SER

5.3.2 Protein sidechains ⓘ

In the following table, the Percentiles column shows the percent sidechain outliers of the chain as a percentile score with respect to all X-ray entries followed by that with respect to entries of similar resolution. The Analysed column shows the number of residues for which the sidechain conformation was analysed, and the total number of residues.

Mol	Chain	Analysed	Rotameric	Outliers	Percentiles	
1	A	282/286 (99%)	275 (98%)	7 (2%)	60	63

All (7) residues with a non-rotameric sidechain are listed below:

Mol	Chain	Res	Type
1	A	419	LYS
1	A	469	ILE
1	A	485	GLU
1	A	515	CYS
1	A	559	ASP
1	A	606	HIS
1	A	682	GLU

Some sidechains can be flipped to improve hydrogen bonding and reduce clashes. All (3) such sidechains are listed below:

Mol	Chain	Res	Type
1	A	359	GLN

Continued on next page...

Continued from previous page...

Mol	Chain	Res	Type
1	A	368	ASN
1	A	585	GLN

5.3.3 RNA ⓘ

There are no RNA chains in this entry.

5.4 Non-standard residues in protein, DNA, RNA chains ⓘ

There are no non-standard protein/DNA/RNA residues in this entry.

5.5 Carbohydrates ⓘ

5 carbohydrates are modelled in this entry.

In the following table, the Counts columns list the number of bonds (or angles) for which Mogul statistics could be retrieved, the number of bonds (or angles) that are observed in the model and the number of bonds (or angles) that are defined in the chemical component dictionary. The Link column lists molecule types, if any, to which the group is linked. The Z score for a bond length (or angle) is the number of standard deviations the observed value is removed from the expected value. A bond length (or angle) with $|Z| > 2$ is considered an outlier worth inspection. RMSZ is the root-mean-square of all Z scores of the bond lengths (or angles).

Mol	Type	Chain	Res	Link	Bond lengths			Bond angles		
					Counts	RMSZ	$\# Z > 2$	Counts	RMSZ	$\# Z > 2$
7	NAG	A	3	1,7	12,14,15	1.71	2 (16%)	15,19,21	1.35	2 (13%)
7	NAG	A	4	7	12,14,15	0.54	0	15,19,21	1.32	2 (13%)
7	BMA	A	5	7	10,11,12	1.34	1 (10%)	11,15,17	2.04	2 (18%)
8	NAG	A	8	1,8	12,14,15	0.93	0	15,19,21	1.18	1 (6%)
8	NAG	A	9	8	12,14,15	0.55	0	15,19,21	1.30	2 (13%)

In the following table, the Chirals column lists the number of chiral outliers, the number of chiral centers analysed, the number of these observed in the model and the number defined in the chemical component dictionary. Similar counts are reported in the Torsion and Rings columns. '-' means no outliers of that kind were identified.

Mol	Type	Chain	Res	Link	Chirals	Torsions	Rings
7	NAG	A	3	1,7	-	0/6/23/26	0/1/1/1
7	NAG	A	4	7	-	0/6/23/26	0/1/1/1
7	BMA	A	5	7	-	0/2/19/22	0/1/1/1

Continued on next page...

Continued from previous page...

Mol	Type	Chain	Res	Link	Chirals	Torsions	Rings
8	NAG	A	8	1,8	-	0/6/23/26	0/1/1/1
8	NAG	A	9	8	-	0/6/23/26	0/1/1/1

All (3) bond length outliers are listed below:

Mol	Chain	Res	Type	Atoms	Z	Observed(Å)	Ideal(Å)
7	A	3	NAG	C2-N2	-4.37	1.41	1.46
7	A	3	NAG	O5-C5	-2.83	1.40	1.45
7	A	5	BMA	O5-C5	-2.64	1.40	1.45

All (9) bond angle outliers are listed below:

Mol	Chain	Res	Type	Atoms	Z	Observed(°)	Ideal(°)
7	A	5	BMA	O5-C5-C6	5.56	112.81	106.98
8	A	8	NAG	O5-C5-C6	3.51	110.67	106.98
8	A	9	NAG	C3-C2-N2	-2.73	107.60	111.76
8	A	9	NAG	O5-C5-C6	2.68	109.80	106.98
7	A	4	NAG	O5-C5-C4	2.57	113.91	110.65
7	A	4	NAG	O4-C4-C3	-2.35	105.09	110.35
7	A	3	NAG	C3-C4-C5	-2.32	106.06	110.20
7	A	5	BMA	O4-C4-C5	-2.10	103.75	109.28
7	A	3	NAG	O5-C5-C6	2.04	109.12	106.98

There are no chirality outliers.

There are no torsion outliers.

There are no ring outliers.

5.6 Ligand geometry

Of 7 ligands modelled in this entry, 3 are monoatomic - leaving 4 for Mogul analysis.

In the following table, the Counts columns list the number of bonds (or angles) for which Mogul statistics could be retrieved, the number of bonds (or angles) that are observed in the model and the number of bonds (or angles) that are defined in the chemical component dictionary. The Link column lists molecule types, if any, to which the group is linked. The Z score for a bond length (or angle) is the number of standard deviations the observed value is removed from the expected value. A bond length (or angle) with $|Z| > 2$ is considered an outlier worth inspection. RMSZ is the root-mean-square of all Z scores of the bond lengths (or angles).

Mol	Type	Chain	Res	Link	Bond lengths			Bond angles		
					Counts	RMSZ	# Z > 2	Counts	RMSZ	# Z > 2
6	NAG	A	1	-	12,14,15	0.60	0	15,19,21	1.27	2 (13%)
9	LTC	A	172	-	55,55,55	1.27	4 (7%)	70,70,70	1.93	20 (28%)
5	SO4	A	692	-	4,4,4	0.21	0	6,6,6	0.08	0
4	CO3	A	85	3	0,3,3	0.00	-	0,3,3	0.00	-

In the following table, the Chirals column lists the number of chiral outliers, the number of chiral centers analysed, the number of these observed in the model and the number defined in the chemical component dictionary. Similar counts are reported in the Torsion and Rings columns. '-' means no outliers of that kind were identified.

Mol	Type	Chain	Res	Link	Chirals	Torsions	Rings
6	NAG	A	1	-	-	0/6/23/26	0/1/1/1
9	LTC	A	172	-	-	0/44/84/84	0/2/2/2
5	SO4	A	692	-	-	0/0/0/0	0/0/0/0
4	CO3	A	85	3	-	0/0/0/0	0/0/0/0

All (4) bond length outliers are listed below:

Mol	Chain	Res	Type	Atoms	Z	Observed(Å)	Ideal(Å)
9	A	172	LTC	O10-C25	4.64	1.48	1.34
9	A	172	LTC	C19-C18	3.97	1.53	1.31
9	A	172	LTC	O12-C29	3.79	1.45	1.33
9	A	172	LTC	O11-C5	2.31	1.44	1.40

All (22) bond angle outliers are listed below:

Mol	Chain	Res	Type	Atoms	Z	Observed(°)	Ideal(°)
9	A	172	LTC	O41-C41-C42	4.81	119.15	110.01
9	A	172	LTC	C45-O41-C41	4.76	121.48	113.55
9	A	172	LTC	O10-C25-C24	4.67	121.78	111.56
9	A	172	LTC	C45-C44-N44	-4.45	102.60	111.02
9	A	172	LTC	C47-C41-C42	-3.87	106.96	113.87
9	A	172	LTC	O2-C3-C2	3.74	116.76	107.16
9	A	172	LTC	C43-C42-C41	3.64	116.54	110.17
9	A	172	LTC	C28-O12-C29	3.59	127.64	117.13
9	A	172	LTC	C41-C42-N42	-3.22	104.29	110.79
9	A	172	LTC	O12-C28-C26	-3.08	100.75	108.83
6	A	1	NAG	C3-C4-C5	3.05	115.66	110.20
9	A	172	LTC	O42-C43-C44	2.76	115.27	109.61
9	A	172	LTC	O4-C2-C3	-2.57	103.85	109.85
9	A	172	LTC	C20-C19-C18	-2.46	111.51	125.43
9	A	172	LTC	O10-C25-O9	-2.42	117.17	123.65

Continued on next page...

Continued from previous page...

Mol	Chain	Res	Type	Atoms	Z	Observed(°)	Ideal(°)
9	A	172	LTC	C32-C31-C30	-2.28	104.67	113.28
6	A	1	NAG	O5-C5-C4	2.27	113.54	110.65
9	A	172	LTC	O1-C1-C2	2.24	113.91	109.76
9	A	172	LTC	O12-C29-C30	2.24	118.97	111.94
9	A	172	LTC	O11-C5-C4	2.14	110.90	108.18
9	A	172	LTC	O12-C29-O13	-2.13	117.63	123.43
9	A	172	LTC	C27-O11-C5	2.05	117.89	113.81

There are no chirality outliers.

There are no torsion outliers.

There are no ring outliers.

5.7 Other polymers ⓘ

There are no such residues in this entry.

5.8 Polymer linkage issues

There are no chain breaks in this entry.

6 Fit of model and data ⓘ

6.1 Protein, DNA and RNA chains ⓘ

In the following table, the column labelled ‘#RSRZ> 2’ contains the number (and percentage) of RSRZ outliers, followed by percent RSRZ outliers for the chain as percentile scores relative to all X-ray entries and entries of similar resolution. The OWAB column contains the minimum, median, 95th percentile and maximum values of the occupancy-weighted average B-factor per residue. The column labelled ‘Q< 0.9’ lists the number of (and percentage) of residues with an average occupancy less than 0.9.

Mol	Chain	Analysed	<RSRZ>	#RSRZ>2	OWAB(Å ²)	Q<0.9
1	A	341/345 (98%)	0.40	19 (5%) 24 26	19, 31, 53, 77	0

All (19) RSRZ outliers are listed below:

Mol	Chain	Res	Type	RSRZ
1	A	342	TYR	8.6
1	A	681	LEU	7.5
1	A	419	LYS	5.8
1	A	683	ALA	5.2
1	A	621	ASN	4.4
1	A	682	GLU	4.2
1	A	420	HIS	4.1
1	A	343	THR	3.4
1	A	422	SER	3.3
1	A	367	GLN	3.0
1	A	418	SER	2.8
1	A	482	ALA	2.7
1	A	416	LYS	2.6
1	A	423	LEU	2.6
1	A	627	ASP	2.4
1	A	636	THR	2.3
1	A	421	SER	2.2
1	A	620	LYS	2.2
1	A	686	PHE	2.2

6.2 Non-standard residues in protein, DNA, RNA chains ⓘ

There are no non-standard protein/DNA/RNA residues in this entry.

6.3 Carbohydrates ⓘ

In the following table, the Atoms column lists the number of modelled atoms in the group and the number defined in the chemical component dictionary. LLDF column lists the quality of electron density of the group with respect to its neighbouring residues in protein, DNA or RNA chains. The B-factors column lists the minimum, median, 95th percentile and maximum values of B factors of atoms in the group. The column labelled 'Q< 0.9' lists the number of atoms with occupancy less than 0.9.

Mol	Type	Chain	Res	Atoms	RSR	LLDF	B-factors(Å ²)	Q<0.9
7	NAG	A	4	14/15	0.30	3.51	61,63,65,68	0
7	NAG	A	3	14/15	0.16	0.84	49,53,55,58	0
8	NAG	A	8	14/15	0.14	-0.13	39,39,42,45	0
8	NAG	A	9	14/15	0.15	-0.61	47,50,50,50	0
7	BMA	A	5	11/12	0.33	-	71,73,73,73	0

6.4 Ligands ⓘ

In the following table, the Atoms column lists the number of modelled atoms in the group and the number defined in the chemical component dictionary. LLDF column lists the quality of electron density of the group with respect to its neighbouring residues in protein, DNA or RNA chains. The B-factors column lists the minimum, median, 95th percentile and maximum values of B factors of atoms in the group. The column labelled 'Q< 0.9' lists the number of atoms with occupancy less than 0.9.

Mol	Type	Chain	Res	Atoms	RSR	LLDF	B-factors(Å ²)	Q<0.9
5	SO4	A	692	5/5	0.25	3.89	56,56,57,57	0
6	NAG	A	1	14/15	0.27	1.73	55,58,58,58	0
9	LTC	A	172	54/54	0.32	1.05	33,51,54,54	54
2	ZN	A	82	1/1	0.11	-0.26	37,37,37,37	0
4	CO3	A	85	4/4	0.11	-0.97	19,19,20,20	0
2	ZN	A	81	1/1	0.11	-1.38	32,32,32,32	0
3	FE	A	84	1/1	0.09	-2.09	21,21,21,21	0

6.5 Other polymers ⓘ

There are no such residues in this entry.