



Full wwPDB X-ray Structure Validation Report

Nov 2, 2014 – 11:06 PM EST

PDB ID : 3SFC
Title : Structure-Based Optimization of Potent 4- and 6-Azaindole-3-Carboxamide
sas Renin Inhibitors
Authors : Scheiper, B.; Matter, H.; Steinhagen, H.; Bocskei, Z.; Fleury, V.; McCort, G.
Deposited on : 2011-06-13
Resolution : 2.10 Å(reported)

This is a full wwPDB validation report for a publicly released PDB entry.
We welcome your comments at validation@mail.wwpdb.org
A user guide is available at <http://wwpdb.org/ValidationPDFNotes.html>

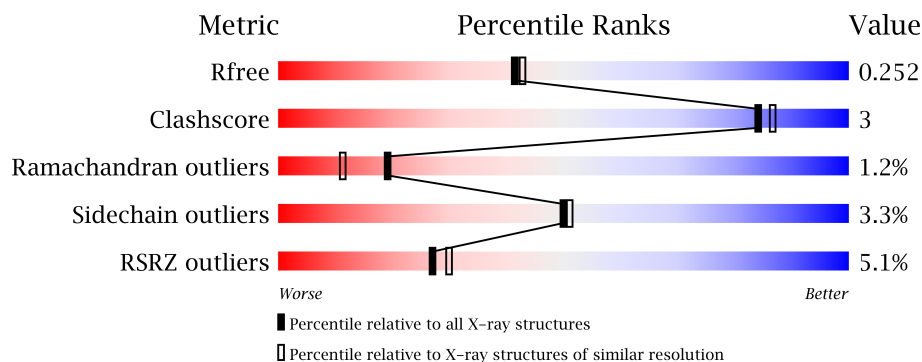
The following versions of software and data (see [references](#)) were used in the production of this report:

MolProbity : 4.02b-467
Mogul : 1.16 November 2013
Xtriage (Phenix) : dev-1439
EDS : stable24103
Percentile statistics : 21963
Refmac : 5.8.0049
CCP4 : 6.1.3
Ideal geometry (proteins) : Engh & Huber (2001)
Ideal geometry (DNA, RNA) : Parkinson et. al. (1996)
Validation Pipeline (wwPDB-VP) : stable24103

1 Overall quality at a glance

The reported resolution of this entry is 2.10 Å.

Percentile scores (ranging between 0-100) for global validation metrics of the entry are shown in the following graphic. The table shows the number of entries on which the scores are based.



Metric	Whole archive (#Entries)	Similar resolution (#Entries, resolution range(Å))
R_{free}	66092	3012 (2.10-2.10)
Clashscore	79885	3649 (2.10-2.10)
Ramachandran outliers	78287	3610 (2.10-2.10)
Sidechain outliers	78261	3611 (2.10-2.10)
RSRZ outliers	66119	3013 (2.10-2.10)

The table below summarises the geometric issues observed across the polymeric chains and their fit to the electron density. The red, orange, yellow and green segments on the lower bar indicate the fraction of residues that contain outliers for ≥ 3 , 2, 1 and 0 types of geometric quality criteria. The upper red bar (where present) indicates the fraction of residues that have poor fit to the electron density.

Mol	Chain	Length	Quality of chain
1	A	340	
1	B	340	

2 Entry composition i

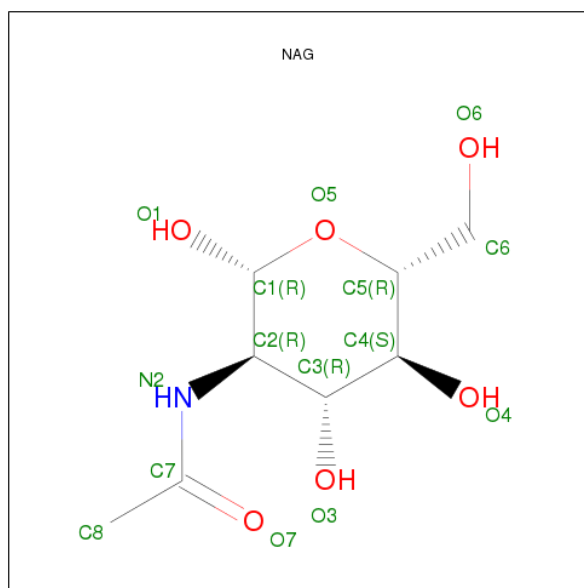
There are 5 unique types of molecules in this entry. The entry contains 5894 atoms, of which 0 are hydrogen and 0 are deuterium.

In the tables below, the ZeroOcc column contains the number of atoms modelled with zero occupancy, the AltConf column contains the number of residues with at least one atom in alternate conformation and the Trace column contains the number of residues modelled with at most 2 atoms.

- Molecule 1 is a protein called Renin.

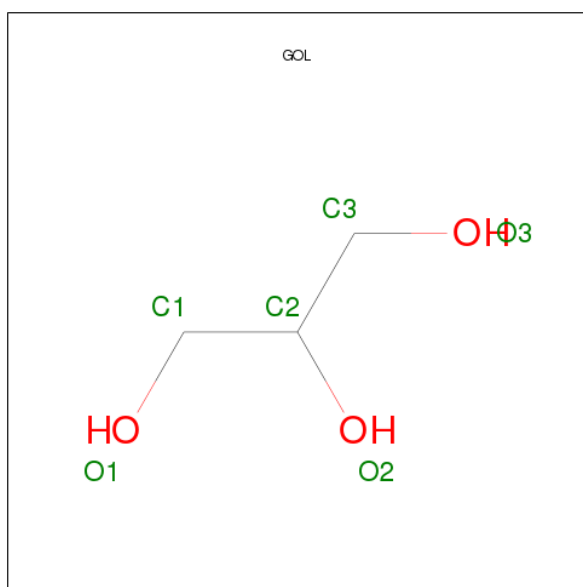
Mol	Chain	Residues	Atoms					ZeroOcc	AltConf	Trace
1	A	340	Total	C	N	O	S	0	0	0
			2621	1672	424	511	14			
1	B	340	Total	C	N	O	S	0	0	0
			2621	1672	424	511	14			

- Molecule 2 is SUGAR (N-ACETYL-D-GLUCOSAMINE) (three-letter code: NAG) (formula: $C_8H_{15}NO_6$).



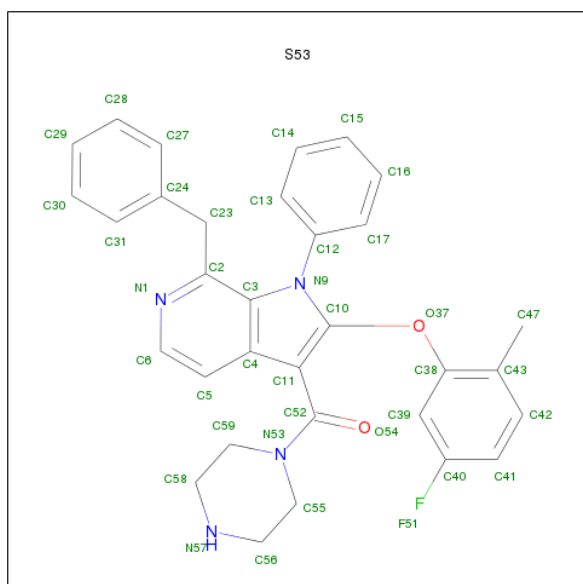
Mol	Chain	Residues	Atoms				ZeroOcc	AltConf
2	A	1	Total	C	N	O	0	0
			14	8	1	5		
2	B	1	Total	C	N	O	0	0
			14	8	1	5		

- Molecule 3 is GLYCEROL (three-letter code: GOL) (formula: $C_3H_8O_3$).



Mol	Chain	Residues	Atoms			ZeroOcc	AltConf
3	A	1	Total	C	O	0	0
			6	3	3		
3	A	1	Total	C	O	0	0
			6	3	3		
3	A	1	Total	C	O	0	0
			6	3	3		
3	B	1	Total	C	O	0	0
			6	3	3		

- Molecule 4 is [7-BENZYL-2-(5-FLUORO-2-METHYLPHENOXY)-1-PHENYL-1H-PYRR OLO[2,3-C]PYRIDIN-3-YL](PIPERAZIN-1-YL)METHANONE (three-letter code: S53) (formula: C₃₂H₂₉FN₄O₂).



Mol	Chain	Residues	Atoms					ZeroOcc	AltConf
4	A	1	Total	C	F	N	O	0	0
			39	32	1	4	2		
4	A	1	Total	C	F	N	O	0	0
			39	32	1	4	2		
4	B	1	Total	C	F	N	O	0	0
			39	32	1	4	2		

- Molecule 5 is water.

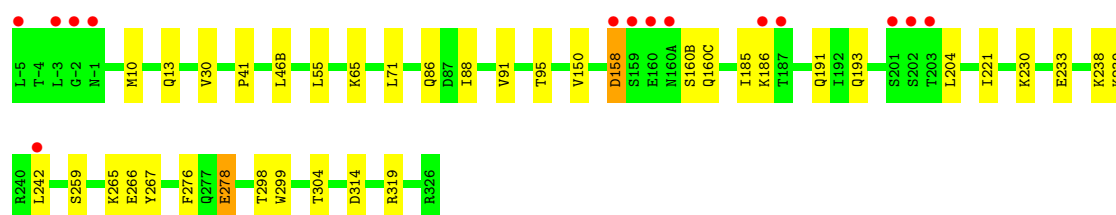
Mol	Chain	Residues	Atoms		ZeroOcc	AltConf
5	A	259	Total	O	0	0
			259	259		
5	B	224	Total	O	0	0
			224	224		

3 Residue-property plots

These plots are drawn for all protein, RNA and DNA chains in the entry. The first graphic for a chain summarises the proportions of errors displayed in the second graphic. The second graphic shows the sequence view annotated by issues in geometry and electron density. Residues are color-coded according to the number of geometric quality criteria for which they contain at least one outlier: green = 0, yellow = 1, orange = 2 and red = 3 or more. A red dot above a residue indicates a poor fit to the electron density ($RSRZ > 2$). Stretches of 2 or more consecutive residues without any outlier are shown as a green connector. Residues present in the sample, but not in the model, are shown in grey.

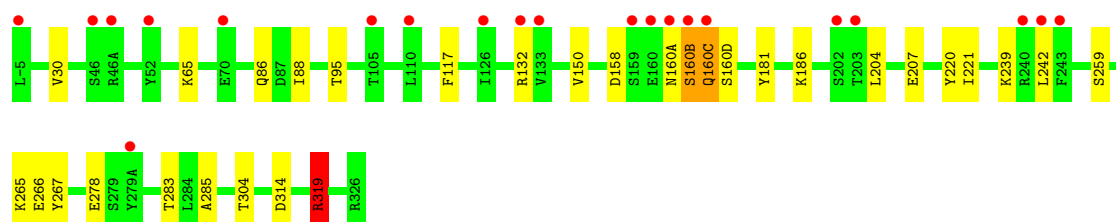
• Molecule 1: Renin

Chain A: 



• Molecule 1: Renin

Chain B: 



4 Data and refinement statistics

Property	Value	Source
Space group	P 21 3	Depositor
Cell constants a, b, c, α , β , γ	138.79Å 138.79Å 138.79Å 90.00° 90.00° 90.00°	Depositor
Resolution (Å)	62.07 – 2.10 62.07 – 2.10	Depositor EDS
% Data completeness (in resolution range)	97.7 (62.07-2.10) 97.1 (62.07-2.10)	Depositor EDS
R_{merge}	0.16	Depositor
R_{sym}	(Not available)	Depositor
$\langle I/\sigma(I) \rangle$ ¹	1.45 (at 2.10Å)	Xtriage
Refinement program	BUSTER 2.9.7	Depositor
R, R_{free}	0.211 , 0.243 0.212 , 0.252	Depositor DCC
R_{free} test set	2576 reflections (5.37%)	DCC
Wilson B-factor (Å ²)	37.4	Xtriage
Anisotropy	0.000	Xtriage
Bulk solvent k_{sol} (e/Å ³), B_{sol} (Å ²)	0.37 , 57.5	EDS
Estimated twinning fraction	0.055 for l,-k,h	Xtriage
L-test for twinning	$\langle L \rangle = 0.46$, $\langle L^2 \rangle = 0.29$	Xtriage
Outliers	0 of 50884 reflections	Xtriage
F_o, F_c correlation	0.94	EDS
Total number of atoms	5894	wwPDB-VP
Average B, all atoms (Å ²)	48.0	wwPDB-VP

Xtriage's analysis on translational NCS is as follows: *The largest off-origin peak in the Patterson function is 3.36% of the height of the origin peak. No significant pseudotranslation is detected.*

¹Intensities estimated from amplitudes.

5 Model quality

5.1 Standard geometry

Bond lengths and bond angles in the following residue types are not validated in this section: GOL, S53, NAG

The Z score for a bond length (or angle) is the number of standard deviations the observed value is removed from the expected value. A bond length (or angle) with $|Z| > 5$ is considered an outlier worth inspection. RMSZ is the root-mean-square of all Z scores of the bond lengths (or angles).

Mol	Chain	Bond lengths		Bond angles	
		RMSZ	$\# Z > 5$	RMSZ	$\# Z > 5$
1	A	0.46	0/2681	0.69	0/3636
1	B	0.46	0/2681	0.71	1/3636 (0.0%)
All	All	0.46	0/5362	0.70	1/7272 (0.0%)

There are no bond length outliers.

All (1) bond angle outliers are listed below:

Mol	Chain	Res	Type	Atoms	Z	Observed(°)	Ideal(°)
1	B	319	ARG	CD-NE-CZ	5.81	131.73	123.60

There are no chirality outliers.

There are no planarity outliers.

5.2 Close contacts

In the following table, the Non-H and H(model) columns list the number of non-hydrogen atoms and hydrogen atoms in the chain respectively. The H(added) column lists the number of hydrogens added by MolProbity. The Clashes column lists the number of clashes within the asymmetric unit, and the number in parentheses is this value normalized per 1000 atoms of the molecule in the chain. The Symm-Clashes column gives symmetry related clashes, in the same way as for the Clashes column.

Mol	Chain	Non-H	H(model)	H(added)	Clashes	Symm-Clashes
1	A	2621	0	2555	18	0
1	B	2621	0	2555	15	0
2	A	14	0	13	0	0
2	B	14	0	13	0	0
3	A	18	0	24	3	0
3	B	6	0	8	1	0

Continued on next page...

Continued from previous page...

Mol	Chain	Non-H	H(model)	H(added)	Clashes	Symm-Clashes
4	A	78	0	58	0	0
4	B	39	0	29	0	0
5	A	259	0	0	0	0
5	B	224	0	0	2	0
All	All	5894	0	5255	31	0

Clashscore is defined as the number of clashes calculated for the entry per 1000 atoms (including hydrogens) of the entry. The overall clashscore for this entry is 3.

All (31) close contacts within the same asymmetric unit are listed below.

Atom-1	Atom-2	Distance(Å)	Clash(Å)
1:A:158:ASP:HA	1:B:160(D):SER:HA	1.30	1.09
1:A:191:GLN:HE21	1:A:298:THR:HG21	1.38	0.89
1:A:13:GLN:HA	3:A:328:GOL:H2	1.79	0.64
1:B:181:TYR:CD1	1:B:319:ARG:HD3	2.36	0.61
1:B:314:ASP:OD2	1:B:319:ARG:HD2	2.04	0.57
1:A:298:THR:HG22	1:A:299:TRP:O	2.07	0.54
1:A:191:GLN:NE2	1:A:298:THR:HG21	2.18	0.51
1:B:259:SER:HB3	1:B:266:GLU:HG3	1.94	0.50
1:B:186:LYS:NZ	5:B:509:HOH:O	2.47	0.46
1:B:65:LYS:HB2	1:B:86:GLN:HB3	1.98	0.46
1:B:88:ILE:HG23	1:B:95:THR:HG23	1.98	0.46
1:A:259:SER:HB3	1:A:266:GLU:HG3	1.99	0.45
1:A:30:VAL:HG21	3:A:328:GOL:H11	1.99	0.45
1:B:150:VAL:HG12	1:B:314:ASP:HA	1.98	0.44
1:A:150:VAL:HG12	1:A:314:ASP:HA	1.98	0.44
1:A:65:LYS:HB2	1:A:86:GLN:HB3	1.99	0.44
1:A:221:ILE:HG13	1:A:304:THR:HB	2.00	0.43
1:B:220:TYR:HB3	1:B:285:ALA:O	2.18	0.43
1:A:185:ILE:HD13	1:A:193:GLN:HB2	2.00	0.43
1:B:221:ILE:HG13	1:B:304:THR:HB	2.00	0.43
3:B:327:GOL:H12	5:B:371:HOH:O	2.17	0.43
1:A:41:PRO:HB2	1:A:55:LEU:HD23	2.01	0.42
1:B:160(B):SER:O	1:B:160(C):GLN:HB2	2.20	0.42
1:A:88:ILE:HG23	1:A:95:THR:HG23	2.01	0.42
1:B:30:VAL:HG23	1:B:117:PHE:CG	2.55	0.42
1:A:278:GLU:HA	1:B:160(A):ASN:HA	2.01	0.41
1:A:158:ASP:N	1:B:160(C):GLN:O	2.51	0.41
1:B:265:LYS:HD2	1:B:267:TYR:CZ	2.55	0.41
1:A:191:GLN:HE21	1:A:298:THR:CG2	2.21	0.41
1:A:276:PHE:CE1	3:A:327:GOL:H31	2.56	0.41
1:A:265:LYS:HD2	1:A:267:TYR:CZ	2.56	0.41

There are no symmetry-related clashes.

5.3 Torsion angles

5.3.1 Protein backbone ⓘ

In the following table, the Percentiles column shows the percent Ramachandran outliers of the chain as a percentile score with respect to all X-ray entries followed by that with respect to entries of similar resolution.

The Analysed column shows the number of residues for which the backbone conformation was analysed, and the total number of residues.

Mol	Chain	Analysed	Favoured	Allowed	Outliers	Percentiles	
1	A	338/340 (99%)	327 (97%)	7 (2%)	4 (1%)	19	11
1	B	338/340 (99%)	327 (97%)	7 (2%)	4 (1%)	19	11
All	All	676/680 (99%)	654 (97%)	14 (2%)	8 (1%)	19	11

All (8) Ramachandran outliers are listed below:

Mol	Chain	Res	Type
1	B	160(B)	SER
1	A	158	ASP
1	A	242	LEU
1	B	158	ASP
1	B	160(C)	GLN
1	A	160(C)	GLN
1	B	242	LEU
1	A	160(B)	SER

5.3.2 Protein sidechains ⓘ

In the following table, the Percentiles column shows the percent sidechain outliers of the chain as a percentile score with respect to all X-ray entries followed by that with respect to entries of similar resolution. The Analysed column shows the number of residues for which the sidechain conformation was analysed, and the total number of residues.

Mol	Chain	Analysed	Rotameric	Outliers	Percentiles	
1	A	290/290 (100%)	278 (96%)	12 (4%)	41	40
1	B	290/290 (100%)	283 (98%)	7 (2%)	61	65
All	All	580/580 (100%)	561 (97%)	19 (3%)	50	51

All (19) residues with a non-rotameric sidechain are listed below:

Mol	Chain	Res	Type
1	A	10	MET
1	A	46(B)	LEU
1	A	71	LEU
1	A	91	VAL
1	A	186	LYS
1	A	204	LEU
1	A	230	LYS
1	A	233	GLU
1	A	238	LYS
1	A	239	LYS
1	A	278	GLU
1	A	319	ARG
1	B	132	ARG
1	B	204	LEU
1	B	207	GLU
1	B	239	LYS
1	B	278	GLU
1	B	283	THR
1	B	319	ARG

Some sidechains can be flipped to improve hydrogen bonding and reduce clashes. All (5) such sidechains are listed below:

Mol	Chain	Res	Type
1	A	191	GLN
1	A	193	GLN
1	A	318	ASN
1	B	183	ASN
1	B	287	HIS

5.3.3 RNA ⓘ

There are no RNA chains in this entry.

5.4 Non-standard residues in protein, DNA, RNA chains ⓘ

There are no non-standard protein/DNA/RNA residues in this entry.

5.5 Carbohydrates

There are no carbohydrates in this entry.

5.6 Ligand geometry

9 ligands are modelled in this entry.

In the following table, the Counts columns list the number of bonds (or angles) for which Mogul statistics could be retrieved, the number of bonds (or angles) that are observed in the model and the number of bonds (or angles) that are defined in the chemical component dictionary. The Link column lists molecule types, if any, to which the group is linked. The Z score for a bond length (or angle) is the number of standard deviations the observed value is removed from the expected value. A bond length (or angle) with $|Z| > 2$ is considered an outlier worth inspection. RMSZ is the root-mean-square of all Z scores of the bond lengths (or angles).

Mol	Type	Chain	Res	Link	Bond lengths			Bond angles		
					Counts	RMSZ	$\# Z > 2$	Counts	RMSZ	$\# Z > 2$
3	GOL	A	327	-	5,5,5	0.50	0	5,5,5	1.03	0
3	GOL	A	328	-	5,5,5	0.50	0	5,5,5	0.45	0
3	GOL	A	329	-	5,5,5	0.44	0	5,5,5	0.59	0
4	S53	A	330	-	44,44,44	1.75	5 (11%)	57,62,62	2.46	17 (29%)
4	S53	A	331	-	44,44,44	1.78	4 (9%)	57,62,62	2.08	19 (33%)
2	NAG	A	367	1	12,14,15	1.38	2 (16%)	15,19,21	2.10	5 (33%)
3	GOL	B	327	-	5,5,5	0.48	0	5,5,5	0.44	0
4	S53	B	328	-	44,44,44	1.71	3 (6%)	57,62,62	2.39	17 (29%)
2	NAG	B	367	1	12,14,15	1.44	3 (25%)	15,19,21	2.01	5 (33%)

In the following table, the Chirals column lists the number of chiral outliers, the number of chiral centers analysed, the number of these observed in the model and the number defined in the chemical component dictionary. Similar counts are reported in the Torsion and Rings columns. '-' means no outliers of that kind were identified.

Mol	Type	Chain	Res	Link	Chirals	Torsions	Rings
3	GOL	A	327	-	-	0/4/4/4	0/0/0/0
3	GOL	A	328	-	-	0/4/4/4	0/0/0/0
3	GOL	A	329	-	-	0/4/4/4	0/0/0/0
4	S53	A	330	-	-	0/15/28/28	0/6/6/6
4	S53	A	331	-	-	0/15/28/28	0/6/6/6
2	NAG	A	367	1	-	0/6/23/26	0/1/1/1
3	GOL	B	327	-	-	0/4/4/4	0/0/0/0
4	S53	B	328	-	-	0/15/28/28	0/6/6/6
2	NAG	B	367	1	-	0/6/23/26	0/1/1/1

All (17) bond length outliers are listed below:

Mol	Chain	Res	Type	Atoms	Z	Observed(Å)	Ideal(Å)
4	A	331	S53	C12-N9	-9.07	1.34	1.46
4	B	328	S53	C12-N9	-8.61	1.35	1.46
4	A	330	S53	C12-N9	-8.41	1.35	1.46
4	A	330	S53	C11-C52	-3.32	1.49	1.51
4	A	330	S53	C5-C6	3.16	1.40	1.36
4	B	328	S53	C5-C6	2.99	1.40	1.36
4	A	331	S53	C5-C6	2.87	1.40	1.36
4	A	331	S53	C11-C52	-2.57	1.50	1.51
2	B	367	NAG	C2-N2	2.53	1.49	1.46
4	A	330	S53	C11-C10	-2.50	1.37	1.42
2	B	367	NAG	C3-C2	2.43	1.56	1.52
4	A	331	S53	C3-N9	-2.30	1.36	1.39
4	B	328	S53	C3-N9	-2.28	1.36	1.39
2	A	367	NAG	C2-N2	2.24	1.48	1.46
2	A	367	NAG	C4-C3	2.20	1.58	1.52
2	B	367	NAG	C4-C5	2.10	1.57	1.53
4	A	330	S53	C13-C12	2.10	1.41	1.38

All (63) bond angle outliers are listed below:

Mol	Chain	Res	Type	Atoms	Z	Observed(°)	Ideal(°)
4	B	328	S53	C11-C52-N53	9.52	126.86	117.87
4	A	330	S53	C11-C52-N53	9.30	126.66	117.87
4	A	330	S53	C3-C2-N1	-6.78	117.98	122.86
4	A	331	S53	C3-C2-N1	-6.54	118.15	122.86
4	B	328	S53	C3-C2-N1	-6.12	118.45	122.86
4	A	330	S53	C23-C2-C3	5.95	126.56	121.18
2	B	367	NAG	O5-C5-C4	5.10	117.13	110.65
2	A	367	NAG	O5-C5-C4	5.07	117.09	110.65
4	B	328	S53	C23-C2-C3	4.75	125.48	121.18
4	A	330	S53	C6-N1-C2	4.55	123.60	117.75
4	A	331	S53	C11-C52-N53	4.40	122.03	117.87
4	A	331	S53	C23-C2-C3	4.35	125.12	121.18
4	A	330	S53	O54-C52-C11	-4.30	113.37	118.25
4	A	331	S53	C6-N1-C2	4.12	123.05	117.75
4	B	328	S53	C17-C12-C13	-4.06	115.16	121.24
4	B	328	S53	C6-N1-C2	4.00	122.89	117.75
4	A	331	S53	C17-C12-C13	-3.85	115.47	121.24
4	A	330	S53	C5-C6-N1	-3.83	120.39	123.89
4	A	330	S53	C17-C12-C13	-3.78	115.58	121.24
4	B	328	S53	O54-C52-C11	-3.71	114.04	118.25
2	A	367	NAG	C3-C4-C5	3.62	116.66	110.17

Continued on next page...

Continued from previous page...

Mol	Chain	Res	Type	Atoms	Z	Observed(°)	Ideal(°)
2	B	367	NAG	C3-C4-C5	3.57	116.58	110.17
4	B	328	S53	C5-C6-N1	-3.56	120.64	123.89
4	A	331	S53	C38-O37-C10	3.48	127.19	119.97
4	A	331	S53	C5-C6-N1	-3.46	120.72	123.89
4	B	328	S53	C14-C13-C12	3.30	123.08	118.73
4	A	331	S53	C58-N57-C56	3.30	121.69	110.25
4	A	331	S53	C14-C13-C12	3.24	123.00	118.73
4	B	328	S53	C16-C17-C12	3.18	122.92	118.73
4	A	330	S53	C14-C13-C12	3.15	122.89	118.73
4	A	331	S53	C16-C17-C12	3.08	122.79	118.73
4	A	330	S53	C13-C12-N9	3.06	123.55	119.24
4	B	328	S53	C58-N57-C56	3.00	120.64	110.25
4	A	331	S53	C4-C11-C52	-2.82	121.29	125.80
4	B	328	S53	C56-C55-N53	-2.78	104.41	109.78
4	A	330	S53	C59-N53-C55	2.77	117.82	112.57
2	A	367	NAG	O5-C5-C6	2.76	109.88	106.98
4	B	328	S53	C11-C10-N9	2.74	108.97	106.67
4	B	328	S53	C41-C40-C39	-2.74	119.67	123.32
4	A	330	S53	C11-C10-N9	2.71	108.94	106.67
4	A	330	S53	C16-C17-C12	2.69	122.27	118.73
2	A	367	NAG	C3-C2-N2	2.68	115.64	111.62
4	B	328	S53	C17-C12-N9	2.67	123.00	119.24
2	B	367	NAG	C4-C3-C2	2.66	116.32	110.74
2	A	367	NAG	C4-C3-C2	2.53	116.05	110.74
4	A	330	S53	C4-C3-N9	-2.33	106.42	108.73
4	A	331	S53	C41-C40-C39	-2.33	120.21	123.32
4	A	330	S53	C41-C40-C39	-2.33	120.22	123.32
4	A	331	S53	O54-C52-C11	-2.33	115.61	118.25
4	A	331	S53	C5-C4-C3	2.30	121.02	116.73
2	B	367	NAG	C3-C2-N2	2.27	115.03	111.62
4	A	330	S53	C5-C4-C3	2.26	120.95	116.73
4	A	331	S53	C17-C12-N9	2.25	122.41	119.24
4	B	328	S53	C4-C11-C52	-2.25	122.21	125.80
4	A	330	S53	C58-N57-C56	2.23	117.99	110.25
4	A	330	S53	C4-C11-C52	-2.17	122.33	125.80
4	A	331	S53	C4-C3-N9	-2.14	106.61	108.73
4	A	331	S53	C56-C55-N53	-2.13	105.66	109.78
4	A	331	S53	C38-C39-C40	2.08	120.27	115.85
2	B	367	NAG	O5-C5-C6	2.08	109.16	106.98
4	A	331	S53	C13-C12-N9	2.03	122.10	119.24
4	B	328	S53	C38-C39-C40	2.02	120.13	115.85
4	B	328	S53	C4-C3-N9	-2.00	106.75	108.73

There are no chirality outliers.

There are no torsion outliers.

There are no ring outliers.

5.7 Other polymers ⓘ

There are no such residues in this entry.

5.8 Polymer linkage issues

There are no chain breaks in this entry.

6 Fit of model and data ⓘ

6.1 Protein, DNA and RNA chains ⓘ

In the following table, the column labelled ‘#RSRZ> 2’ contains the number (and percentage) of RSRZ outliers, followed by percent RSRZ outliers for the chain as percentile scores relative to all X-ray entries and entries of similar resolution. The OWAB column contains the minimum, median, 95th percentile and maximum values of the occupancy-weighted average B-factor per residue. The column labelled ‘Q< 0.9’ lists the number of (and percentage) of residues with an average occupancy less than 0.9.

Mol	Chain	Analysed	<RSRZ>	#RSRZ>2		OWAB(Å ²)	Q<0.9
1	A	340/340 (100%)	0.15	14 (4%)	35 40	26, 40, 70, 112	0
1	B	340/340 (100%)	0.32	21 (6%)	20 22	27, 51, 81, 108	0
All	All	680/680 (100%)	0.23	35 (5%)	27 30	26, 45, 79, 112	0

All (35) RSRZ outliers are listed below:

Mol	Chain	Res	Type	RSRZ
1	A	160	GLU	6.6
1	A	158	ASP	5.8
1	B	160(B)	SER	5.4
1	B	-5	LEU	4.8
1	A	187	THR	4.7
1	B	132	ARG	4.7
1	B	242	LEU	4.6
1	B	160(C)	GLN	4.5
1	B	160(A)	ASN	4.0
1	B	203	THR	3.9
1	B	160	GLU	3.8
1	A	-1	ASN	3.8
1	B	159	SER	3.6
1	B	70	GLU	3.6
1	A	159	SER	3.2
1	B	52	TYR	3.2
1	B	133	VAL	3.1
1	A	186	LYS	3.0
1	B	110	LEU	3.0
1	A	201	SER	3.0
1	A	-2	GLY	2.9
1	A	-5	LEU	2.8
1	B	279(A)	TYR	2.7
1	A	242	LEU	2.7

Continued on next page...

Continued from previous page...

Mol	Chain	Res	Type	RSRZ
1	B	105	THR	2.4
1	B	126	ILE	2.4
1	B	202	SER	2.4
1	B	240	ARG	2.3
1	A	202	SER	2.3
1	A	203	THR	2.3
1	B	46	SER	2.3
1	B	243	PHE	2.3
1	A	-3	LEU	2.2
1	B	46(A)	ARG	2.1
1	A	160(A)	ASN	2.1

6.2 Non-standard residues in protein, DNA, RNA chains ⓘ

There are no non-standard protein/DNA/RNA residues in this entry.

6.3 Carbohydrates ⓘ

There are no carbohydrates in this entry.

6.4 Ligands ⓘ

In the following table, the Atoms column lists the number of modelled atoms in the group and the number defined in the chemical component dictionary. LLDF column lists the quality of electron density of the group with respect to its neighbouring residues in protein, DNA or RNA chains. The B-factors column lists the minimum, median, 95th percentile and maximum values of B factors of atoms in the group. The column labelled 'Q < 0.9' lists the number of atoms with occupancy less than 0.9.

Mol	Type	Chain	Res	Atoms	RSR	LLDF	B-factors(Å ²)	Q<0.9
3	GOL	A	327	6/6	0.24	-	59,60,61,61	0
3	GOL	A	329	6/6	0.24	-	71,72,72,72	0
3	GOL	B	327	6/6	0.20	-	59,59,60,60	0
4	S53	B	328	39/39	0.11	-	42,51,67,67	0
2	NAG	A	367	14/15	0.14	-	59,62,65,65	0
4	S53	A	331	39/39	0.63	-	35,49,60,61	39
2	NAG	B	367	14/15	0.25	-	80,84,86,86	0
4	S53	A	330	39/39	0.11	-	26,31,35,37	0
3	GOL	A	328	6/6	0.28	-	49,49,50,51	0

6.5 Other polymers ⓘ

There are no such residues in this entry.