



# Full wwPDB X-ray Structure Validation Report

Mar 1, 2014 – 12:47 AM GMT

PDB ID : 3SFD  
Title : crystal structure of porcine mitochondrial respiratory complex II bound with oxaloacetate and pentachlorophenol  
Authors : Zhou, Q.J.; Zhai, Y.J.; Liu, M.; Sun, F.  
Deposited on : 2011-06-13  
Resolution : 2.61 Å(reported)

This is a full wwPDB validation report for a publicly released PDB entry.  
We welcome your comments at [validation@mail.wwpdb.org](mailto:validation@mail.wwpdb.org)  
A user guide is available at <http://wwpdb.org/ValidationPDFNotes.html>

---

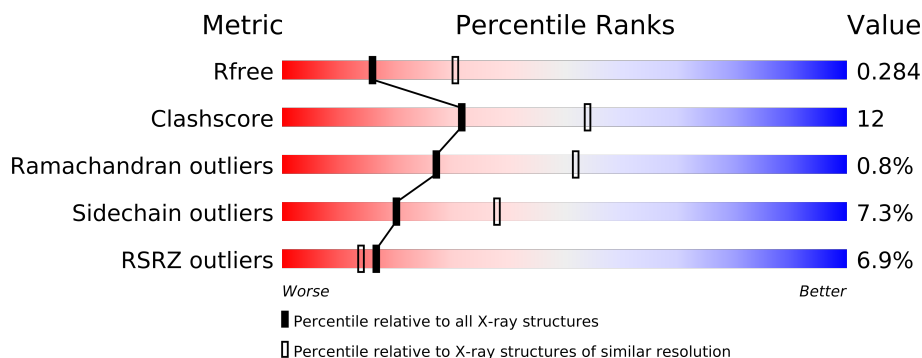
The following versions of software and data (see [references](#)) were used in the production of this report:

MolProbity : 4.02b-467  
Mogul : 1.15 2013  
Xtriage (Phenix) : dev-1323  
EDS : stable22639  
Percentile statistics : 21963  
Refmac : 5.8.0049  
CCP4 : 6.3.0 (Settle)  
Ideal geometry (proteins) : Engh & Huber (2001)  
Ideal geometry (DNA, RNA) : Parkinson et. al. (1996)  
Validation Pipeline (wwPDB-VP) : stable22683

# 1 Overall quality at a glance

The reported resolution of this entry is 2.61 Å.

Percentile scores (ranging between 0-100) for global validation metrics of the entry are shown in the following graphic. The table shows the number of entries on which the scores are based.



Metric	Whole archive (#Entries)	Similar resolution (#Entries, resolution range(Å))
$R_{free}$	66092	1940 (2.64-2.60)
Clashscore	79885	2404 (2.64-2.60)
Ramachandran outliers	78287	2360 (2.64-2.60)
Sidechain outliers	78261	2360 (2.64-2.60)
RSRZ outliers	66119	1939 (2.64-2.60)

The table below summarises the geometric issues observed across the polymeric chains and their fit to the electron density. The red, orange, yellow and green segments on the lower bar indicate the fraction of residues that contain outliers for  $\geq 3$ , 2, 1 and 0 types of geometric quality criteria. The upper red bar (where present) indicates the fraction of residues that have poor fit to the electron density.

Mol	Chain	Length	Quality of chain
1	A	622	
2	B	252	
3	C	140	
4	D	103	

## 2 Entry composition

There are 12 unique types of molecules in this entry. The entry contains 8746 atoms, of which 0 are hydrogen and 0 are deuterium.

In the tables below, the ZeroOcc column contains the number of atoms modelled with zero occupancy, the AltConf column contains the number of residues with at least one atom in alternate conformation and the Trace column contains the number of residues modelled with at most 2 atoms.

- Molecule 1 is a protein called Succinate dehydrogenase [ubiquinone] flavoprotein subunit, mitochondrial.

Mol	Chain	Residues	Atoms					ZeroOcc	AltConf	Trace
1	A	613	Total	C	N	O	S	0	0	0
			4729	2954	848	895	32			

- Molecule 2 is a protein called Succinate dehydrogenase [ubiquinone] iron-sulfur subunit, mitochondrial.

Mol	Chain	Residues	Atoms					ZeroOcc	AltConf	Trace
2	B	239	Total	C	N	O	S	0	0	0
			1922	1214	326	360	22			

There is a discrepancy between the modelled and reference sequences:

Chain	Residue	Modelled	Actual	Comment	Reference
B	252	VAL	ALA	SEE REMARK 999	UNP Q007T0

- Molecule 3 is a protein called Succinate dehydrogenase cytochrome b560 subunit, mitochondrial.

Mol	Chain	Residues	Atoms					ZeroOcc	AltConf	Trace
3	C	138	Total	C	N	O	S	0	0	0
			1064	695	179	183	7			

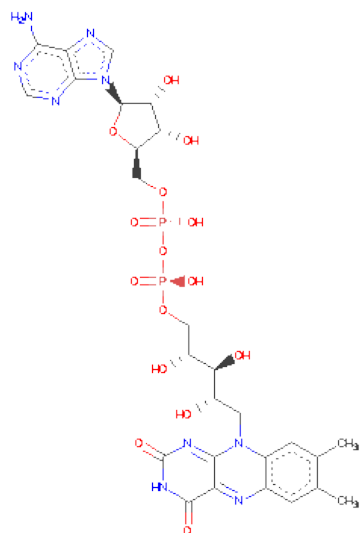
- Molecule 4 is a protein called Succinate dehydrogenase [ubiquinone] cytochrome b small subunit, mitochondrial.

Mol	Chain	Residues	Atoms					ZeroOcc	AltConf	Trace
4	D	102	Total	C	N	O	S	0	0	0
			765	499	128	133	5			

There is a discrepancy between the modelled and reference sequences:

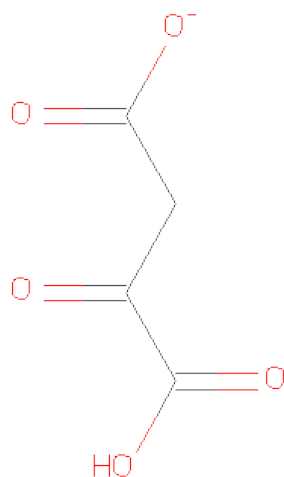
Chain	Residue	Modelled	Actual	Comment	Reference
D	100	ALA	VAL	SEE REMARK 999	UNP A5GZW8

- Molecule 5 is FLAVIN-ADENINE DINUCLEOTIDE (three-letter code: FAD) (formula:  $C_{27}H_{33}N_9O_{15}P_2$ ).



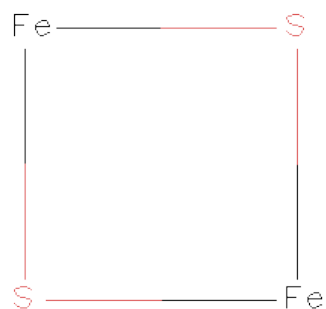
Mol	Chain	Residues	Atoms					ZeroOcc	AltConf
			Total	C	N	O	P		
5	A	1	53	27	9	15	2	0	0

- Molecule 6 is OXALOACETATE ION (three-letter code: OAA) (formula:  $C_4H_3O_5$ ).



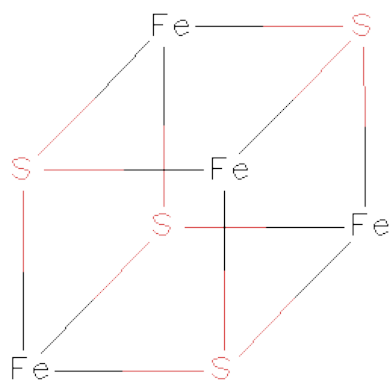
Mol	Chain	Residues	Atoms			ZeroOcc	AltConf
6	A	1	Total	C	O	0	0
			9	4	5		

- Molecule 7 is FE2/S2 (INORGANIC) CLUSTER (three-letter code: FES) (formula:  $\text{Fe}_2\text{S}_2$ ).



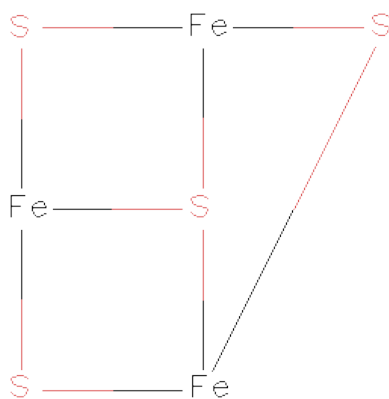
Mol	Chain	Residues	Atoms			ZeroOcc	AltConf
7	B	1	Total	Fe	S	0	0
			4	2	2		

- Molecule 8 is IRON/SULFUR CLUSTER (three-letter code: SF4) (formula:  $\text{Fe}_4\text{S}_4$ ).



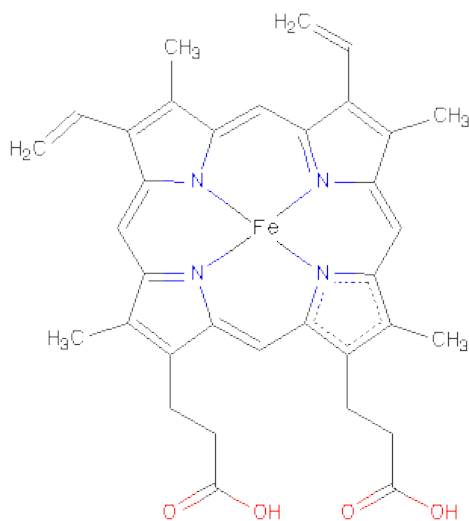
Mol	Chain	Residues	Atoms			ZeroOcc	AltConf
8	B	1	Total	Fe	S	0	0
			8	4	4		

- Molecule 9 is FE3-S4 CLUSTER (three-letter code: F3S) (formula:  $\text{Fe}_3\text{S}_4$ ).



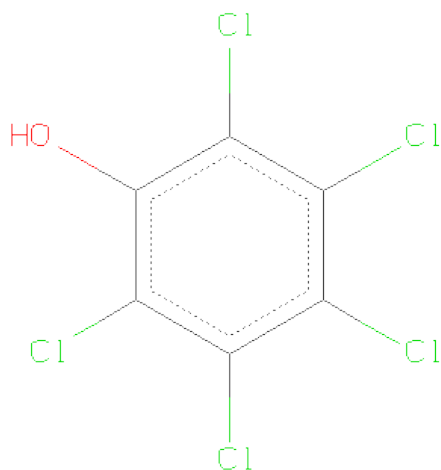
Mol	Chain	Residues	Atoms			ZeroOcc	AltConf
9	B	1	Total	Fe	S	0	0
			7	3	4		

- Molecule 10 is PROTOPORPHYRIN IX CONTAINING FE (three-letter code: HEM) (formula:  $\text{C}_{34}\text{H}_{32}\text{FeN}_4\text{O}_4$ ).



Mol	Chain	Residues	Atoms					ZeroOcc	AltConf
10	C	1	Total	C	Fe	N	O	0	0
			43	34	1	4	4		

- Molecule 11 is PENTACHLOROPHENOL (three-letter code: PCI) (formula:  $C_6HCl_5O$ ).



Mol	Chain	Residues	Atoms				ZeroOcc	AltConf
11	D	1	Total	C	Cl	O	0	0
			12	6	5	1		

- Molecule 12 is water.

Mol	Chain	Residues	Atoms		ZeroOcc	AltConf
12	A	76	Total	O	0	0
			76	76		
12	B	30	Total	O	0	0
			30	30		
12	C	15	Total	O	0	0
			15	15		
12	D	9	Total	O	0	0
			9	9		

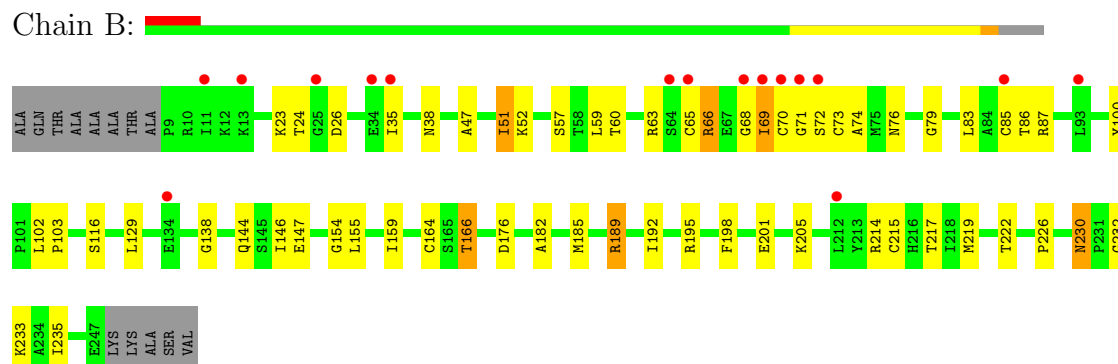
### 3 Residue-property plots

These plots are drawn for all protein, RNA and DNA chains in the entry. The first graphic for a chain summarises the proportions of errors displayed in the second graphic. The second graphic shows the sequence view annotated by issues in geometry and electron density. Residues are color-coded according to the number of geometric quality criteria for which they contain at least one outlier: green = 0, yellow = 1, orange = 2 and red = 3 or more. A red dot above a residue indicates a poor fit to the electron density ( $RSRZ > 2$ ). Stretches of 2 or more consecutive residues without any outlier are shown as a green connector. Residues present in the sample, but not in the model, are shown in grey.

- Molecule 1: Succinate dehydrogenase [ubiquinone] flavoprotein subunit, mitochondrial



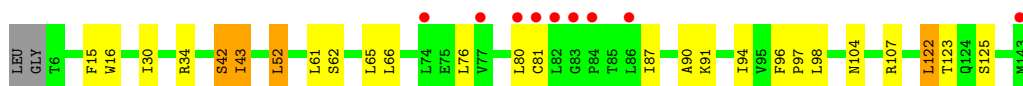
- Molecule 2: Succinate dehydrogenase [ubiquinone] iron-sulfur subunit, mitochondrial



- Molecule 3: Succinate dehydrogenase cytochrome b560 subunit, mitochondrial

Chain C: 





- Molecule 4: Succinate dehydrogenase [ubiquinone] cytochrome b small subunit, mitochondrial

Chain D:



## 4 Data and refinement statistics

Property	Value	Source
Space group	P 21 21 21	Depositor
Cell constants a, b, c, $\alpha$ , $\beta$ , $\gamma$	70.31Å 83.36Å 293.10Å 90.00° 90.00° 90.00°	Depositor
Resolution (Å)	50.00 – 2.61 48.85 – 2.61	Depositor EDS
% Data completeness (in resolution range)	75.3 (50.00-2.61) 75.5 (48.85-2.61)	Depositor EDS
$R_{merge}$	0.14	Depositor
$R_{sym}$	(Not available)	Depositor
$\langle I/\sigma(I) \rangle$ <sup>1</sup>	12.57 (at 2.61Å)	Xtriage
Refinement program	REFMAC 5.5.0088	Depositor
R, $R_{free}$	0.242 , 0.286 0.242 , 0.284	Depositor DCC
$R_{free}$ test set	2055 reflections (5.37%)	DCC
Wilson B-factor (Å <sup>2</sup> )	55.3	Xtriage
Anisotropy	0.129	Xtriage
Bulk solvent $k_{sol}$ (e/Å <sup>3</sup> ), $B_{sol}$ (Å <sup>2</sup> )	0.34 , 38.5	EDS
Estimated twinning fraction	No twinning to report.	Xtriage
L-test for twinning	$\langle  L  \rangle = 0.48$ , $\langle L^2 \rangle = 0.32$	Xtriage
Outliers	0 of 40348 reflections	Xtriage
$F_o, F_c$ correlation	0.90	EDS
Total number of atoms	8746	wwPDB-VP
Average B, all atoms (Å <sup>2</sup> )	60.0	wwPDB-VP

Xtriage's analysis on translational NCS is as follows: *The largest off-origin peak in the Patterson function is 3.42% of the height of the origin peak. No significant pseudotranslation is detected.*

<sup>1</sup>Intensities estimated from amplitudes.

## 5 Model quality i

### 5.1 Standard geometry i

Bond lengths and bond angles in the following residue types are not validated in this section: PCI, OAA, SF4, F3S, FES, HEM, FAD

The Z score for a bond length (or angle) is the number of standard deviations the observed value is removed from the expected value. A bond length (or angle) with  $|Z| > 5$  is considered an outlier worth inspection. RMSZ is the root-mean-square of all Z scores of the bond lengths (or angles).

Mol	Chain	Bond lengths		Bond angles	
		RMSZ	$\# Z  > 5$	RMSZ	$\# Z  > 5$
1	A	0.37	0/4828	0.57	1/6531 (0.0%)
2	B	0.40	0/1964	0.54	0/2648
3	C	0.37	0/1091	0.52	0/1483
4	D	0.38	0/784	0.54	0/1066
All	All	0.38	0/8667	0.55	1/11728 (0.0%)

There are no bond length outliers.

All (1) bond angle outliers are listed below:

Mol	Chain	Res	Type	Atoms	Z	Observed(°)	Ideal(°)
1	A	454	LEU	CA-CB-CG	5.09	127.01	115.30

There are no chirality outliers.

There are no planarity outliers.

### 5.2 Close contacts i

In the following table, the Non-H and H(model) columns list the number of non-hydrogen atoms and hydrogen atoms in the chain respectively. The H(added) column lists the number of hydrogens added by MolProbity. The Clashes column lists the number of clashes within the asymmetric unit, and the number in parentheses is this value normalized per 1000 atoms of the molecule in the chain. The Symm-Clashes column gives symmetry related clashes, in the same way as for the Clashes column.

Mol	Chain	Non-H	H(model)	H(added)	Clashes	Symm-Clashes
1	A	4729	0	4618	127	0
2	B	1922	0	1900	47	0
3	C	1064	0	1104	17	0
4	D	765	0	773	13	0

*Continued on next page...*

*Continued from previous page...*

Mol	Chain	Non-H	H(model)	H(added)	Clashes	Symm-Clashes
5	A	53	0	31	14	0
6	A	9	0	0	5	0
7	B	4	0	0	1	0
8	B	8	0	0	1	0
9	B	7	0	0	3	0
10	C	43	0	30	1	0
11	D	12	0	0	1	0
12	A	76	0	0	6	0
12	B	30	0	0	2	0
12	C	15	0	0	0	0
12	D	9	0	0	1	0
All	All	8746	0	8456	196	0

Clashscore is defined as the number of clashes calculated for the entry per 1000 atoms (including hydrogens) of the entry. The overall clashscore for this entry is 12.

All (196) close contacts within the same asymmetric unit are listed below.

Atom-1	Atom-2	Distance(Å)	Clash(Å)
1:A:57:HIS:NE2	5:A:700:FAD:HM82	1.54	1.23
1:A:57:HIS:CE1	5:A:700:FAD:HM82	1.95	1.01
1:A:58:THR:HG23	5:A:700:FAD:O1A	1.65	0.94
1:A:298:ARG:HH22	6:A:701:OAA:C1	1.86	0.89
1:A:373:THR:HG22	1:A:374:ASN:O	1.72	0.88
1:A:64:GLY:HA2	1:A:154:THR:HG21	1.58	0.84
1:A:171:THR:HB	1:A:173:TYR:CE1	2.12	0.82
2:B:102:LEU:HD22	2:B:166:THR:HG21	1.61	0.82
1:A:303:ARG:HH11	1:A:303:ARG:HG2	1.44	0.81
1:A:152:ASP:HB2	1:A:339:PRO:HD2	1.64	0.80
2:B:164:CYS:SG	2:B:182:ALA:HB2	2.22	0.79
1:A:29:GLY:H	1:A:58:THR:HG21	1.52	0.73
1:A:181:ASP:HA	1:A:237:MET:HG2	1.72	0.72
1:A:61:ALA:HB3	1:A:155:GLY:HA3	1.72	0.71
3:C:42:SER:HB3	11:D:1:PCI:CL4	2.28	0.70
1:A:150:VAL:H	1:A:154:THR:HG23	1.54	0.70
1:A:299:ASP:O	1:A:303:ARG:HB2	1.92	0.69
1:A:58:THR:HG22	5:A:700:FAD:O4'	1.93	0.68
2:B:215:CYS:HA	9:B:304:F3S:S4	2.33	0.68
2:B:69:ILE:O	2:B:159:ILE:HD12	1.94	0.67
1:A:319:LYS:HA	12:A:696:HOH:O	1.95	0.66
3:C:61:LEU:O	3:C:65:LEU:HG	1.96	0.65
1:A:409:ARG:HH22	6:A:701:OAA:C1	2.09	0.65
1:A:222:PHE:HA	1:A:474:GLN:HE21	1.61	0.65

*Continued on next page...*

*Continued from previous page...*

Atom-1	Atom-2	Distance(Å)	Clash(Å)
2:B:70:CYS:SG	2:B:72:SER:OG	2.46	0.64
2:B:129:LEU:HD11	2:B:195:ARG:HB2	1.80	0.64
1:A:51:LEU:HD21	1:A:229:THR:HG21	1.80	0.64
1:A:113:ASN:HD22	2:B:138:GLY:H	1.45	0.64
2:B:52:LYS:HD2	2:B:57:SER:HA	1.80	0.63
1:A:171:THR:HB	1:A:173:TYR:HE1	1.62	0.63
1:A:130:ALA:HB2	1:A:145:HIS:HD2	1.62	0.63
1:A:104:ALA:HB3	1:A:105:PRO:HD3	1.82	0.62
2:B:219:MET:HE1	9:B:304:F3S:S1	2.40	0.62
1:A:57:HIS:NE2	5:A:700:FAD:HM81	2.08	0.62
4:D:60:ALA:HA	4:D:68:MET:HG2	1.82	0.61
2:B:219:MET:HG3	3:C:122:LEU:HD21	1.83	0.61
1:A:26:GLY:O	1:A:31:GLY:HA3	2.01	0.61
2:B:219:MET:HE1	2:B:232:GLY:HA3	1.83	0.60
5:A:700:FAD:H8A	12:A:650:HOH:O	2.01	0.60
3:C:52:LEU:HD21	3:C:98:LEU:HA	1.84	0.60
1:A:414:SER:O	1:A:418:LEU:HD13	2.02	0.60
1:A:72:MET:HE1	1:A:121:THR:HG21	1.84	0.59
1:A:415:LEU:HG	5:A:700:FAD:C2	2.32	0.59
1:A:182:LEU:HD22	1:A:237:MET:HB3	1.85	0.59
2:B:230:ASN:ND2	2:B:233:LYS:H	1.99	0.59
1:A:86:LYS:O	1:A:620:ARG:HD2	2.03	0.58
2:B:35:ILE:HD11	2:B:51:ILE:HG22	1.85	0.58
1:A:361:LEU:HD12	1:A:362:PRO:HD2	1.84	0.58
1:A:113:ASN:ND2	2:B:138:GLY:H	2.01	0.58
3:C:91:LYS:HG3	4:D:134:TRP:CH2	2.37	0.58
2:B:176:ASP:HB3	3:C:16:TRP:CZ2	2.39	0.58
1:A:303:ARG:O	1:A:307:LEU:HB2	2.05	0.57
1:A:150:VAL:H	1:A:154:THR:CG2	2.18	0.56
1:A:72:MET:CE	1:A:121:THR:HG21	2.36	0.56
2:B:154:GLY:O	2:B:185:MET:HE1	2.05	0.56
1:A:322:VAL:HG12	1:A:323:TYR:N	2.20	0.55
1:A:48:VAL:HG12	5:A:700:FAD:H2A	1.87	0.55
2:B:103:PRO:HD2	2:B:166:THR:HG23	1.88	0.55
1:A:486:VAL:HG13	1:A:553:GLU:HB2	1.89	0.55
1:A:264:LEU:CB	5:A:700:FAD:HM73	2.36	0.54
1:A:130:ALA:HB2	1:A:145:HIS:CD2	2.42	0.54
1:A:52:PHE:HB3	1:A:55:ARG:HG2	1.88	0.54
4:D:89:THR:HA	4:D:98:GLN:HE22	1.73	0.54
1:A:463:THR:HG22	1:A:506:HIS:HB3	1.90	0.54
1:A:463:THR:HG23	1:A:464:ILE:HG13	1.90	0.53
3:C:107:ARG:HD2	3:C:125:SER:HB2	1.91	0.53

*Continued on next page...*

*Continued from previous page...*

Atom-1	Atom-2	Distance(Å)	Clash(Å)
3:C:87:ILE:O	3:C:91:LYS:HB2	2.08	0.53
1:A:254:HIS:HB2	1:A:365:HIS:HB2	1.90	0.53
1:A:298:ARG:NH2	6:A:701:OAA:C1	2.66	0.52
2:B:83:LEU:HB2	2:B:86:THR:HG22	1.92	0.52
4:D:47:ARG:NH1	12:D:6:HOH:O	2.41	0.52
1:A:563:ASP:HB3	1:A:571:GLN:HE22	1.75	0.51
1:A:405:HIS:ND1	1:A:409:ARG:HG3	2.26	0.50
1:A:45:THR:HB	1:A:171:THR:HG23	1.93	0.50
1:A:323:TYR:HD2	1:A:357:PRO:HB2	1.76	0.50
2:B:230:ASN:CG	2:B:233:LYS:HB3	2.32	0.50
2:B:51:ILE:HD11	2:B:59:LEU:HD22	1.93	0.50
1:A:258:ILE:HG22	1:A:263:CYS:H	1.76	0.50
1:A:303:ARG:HG2	1:A:303:ARG:NH1	2.22	0.50
1:A:453:ASN:HD21	1:A:527:GLN:HE22	1.59	0.50
1:A:346:MET:O	1:A:350:GLY:N	2.35	0.50
1:A:568:ILE:O	1:A:569:GLN:HB2	2.12	0.50
1:A:288:TYR:HE2	1:A:307:LEU:HD23	1.75	0.49
2:B:230:ASN:ND2	2:B:233:LYS:HB3	2.27	0.49
2:B:76:ASN:HB3	2:B:100:TYR:HB2	1.94	0.49
1:A:254:HIS:HB2	1:A:365:HIS:CB	2.42	0.49
2:B:198:PHE:HD2	2:B:201:GLU:HG3	1.78	0.49
1:A:117:PRO:HA	12:A:629:HOH:O	2.12	0.49
1:A:248:LEU:HD12	1:A:535:GLN:HB2	1.93	0.49
1:A:445:ASN:O	1:A:448:GLU:HB2	2.13	0.49
1:A:374:ASN:OD1	1:A:378:GLN:NE2	2.40	0.48
1:A:265:ILE:HD13	1:A:360:VAL:HG12	1.95	0.48
1:A:66:ASN:HB3	1:A:80:HIS:CE1	2.48	0.48
2:B:219:MET:CE	9:B:304:F3S:S1	3.00	0.48
1:A:88:SER:HB2	1:A:406:GLY:HA3	1.95	0.48
2:B:23:LYS:HB3	2:B:26:ASP:HB2	1.95	0.48
2:B:79:GLY:HA3	3:C:34:ARG:HB2	1.94	0.48
1:A:378:GLN:HG2	1:A:394:TYR:CE2	2.49	0.48
1:A:264:LEU:HB3	5:A:700:FAD:HM73	1.96	0.48
2:B:222:THR:OG1	2:B:230:ASN:ND2	2.47	0.48
2:B:219:MET:CE	2:B:232:GLY:HA3	2.44	0.47
1:A:248:LEU:O	1:A:536:THR:HG23	2.14	0.47
2:B:47:ALA:O	2:B:51:ILE:HG23	2.14	0.47
1:A:52:PHE:O	1:A:53:PRO:C	2.53	0.47
2:B:155:LEU:HD13	2:B:189:ARG:HA	1.96	0.47
1:A:410:LEU:O	1:A:413:ASN:HB2	2.14	0.47
1:A:264:LEU:HD22	5:A:700:FAD:C6	2.44	0.47
3:C:90:ALA:O	3:C:94:ILE:HG12	2.15	0.47

*Continued on next page...*

*Continued from previous page...*

Atom-1	Atom-2	Distance(Å)	Clash(Å)
1:A:492:GLU:O	1:A:496:LYS:HB2	2.14	0.47
12:B:262:HOH:O	4:D:35:SER:HB3	2.15	0.46
1:A:29:GLY:HA3	1:A:418:LEU:HD23	1.97	0.46
2:B:232:GLY:HA2	2:B:235:ILE:HD12	1.96	0.46
1:A:303:ARG:HH11	1:A:303:ARG:CG	2.22	0.46
1:A:493:GLY:O	1:A:497:ILE:HG12	2.15	0.46
4:D:57:LEU:HB2	4:D:58:PRO:HD3	1.97	0.46
1:A:292:ALA:HB3	1:A:622:TYR:HB3	1.97	0.46
1:A:246:GLN:HE22	1:A:600:ARG:HE	1.64	0.46
1:A:480:HIS:HD2	1:A:489:VAL:O	1.99	0.46
1:A:217:TYR:HB3	1:A:232:GLY:HA3	1.97	0.46
2:B:226:PRO:HD2	8:B:303:SF4:S1	2.56	0.46
3:C:104:ASN:ND2	3:C:107:ARG:HE	2.14	0.45
1:A:485:ARG:NE	12:A:673:HOH:O	2.48	0.45
1:A:120:ARG:HG3	2:B:144:GLN:O	2.15	0.45
1:A:310:ARG:HA	12:A:684:HOH:O	2.15	0.45
2:B:116:SER:HB2	3:C:15:PHE:HD1	1.80	0.45
1:A:52:PHE:CE2	1:A:54:THR:HB	2.50	0.45
2:B:65:CYS:O	2:B:66:ARG:HG3	2.16	0.45
2:B:70:CYS:SG	2:B:72:SER:CB	3.04	0.45
2:B:38:ASN:HB2	12:B:264:HOH:O	2.16	0.45
1:A:322:VAL:HG12	1:A:323:TYR:H	1.81	0.45
1:A:97:ILE:HA	1:A:404:VAL:HG23	1.98	0.45
1:A:458:ARG:NH2	1:A:514:MET:HG2	2.32	0.45
4:D:72:LEU:HB3	4:D:126:ILE:HD11	1.98	0.45
1:A:84:THR:HA	1:A:410:LEU:HD22	1.99	0.45
1:A:458:ARG:HH22	1:A:514:MET:HG2	1.81	0.45
1:A:190:ARG:CD	1:A:440:PRO:HB2	2.47	0.44
1:A:322:VAL:CG1	1:A:323:TYR:N	2.79	0.44
1:A:36:PHE:O	1:A:40:GLU:HB2	2.17	0.44
1:A:322:VAL:CG1	1:A:323:TYR:H	2.31	0.44
1:A:563:ASP:H	1:A:571:GLN:NE2	2.16	0.44
2:B:230:ASN:C	2:B:230:ASN:HD22	2.20	0.44
1:A:415:LEU:O	1:A:419:VAL:HG23	2.18	0.44
1:A:59:VAL:HB	1:A:159:LEU:HD23	1.98	0.44
3:C:52:LEU:HB3	10:C:1305:HEM:HAC	2.00	0.43
1:A:52:PHE:CD1	1:A:53:PRO:HD2	2.53	0.43
3:C:43:ILE:H	3:C:43:ILE:HG13	1.42	0.43
2:B:102:LEU:HA	2:B:103:PRO:HD3	1.78	0.43
1:A:52:PHE:CD2	1:A:54:THR:HB	2.53	0.43
1:A:615:VAL:HA	1:A:616:PRO:HD3	1.88	0.43
2:B:66:ARG:HA	2:B:85:CYS:HB2	2.00	0.43

*Continued on next page...*

*Continued from previous page...*

Atom-1	Atom-2	Distance(Å)	Clash(Å)
4:D:49:VAL:HG11	4:D:78:LEU:HD13	2.00	0.43
1:A:516:TRP:HB3	2:B:60:THR:HG21	2.01	0.43
1:A:26:GLY:HA2	5:A:700:FAD:H1B	2.00	0.43
4:D:124:VAL:HG13	4:D:128:LYS:CG	2.49	0.43
1:A:514:MET:HA	1:A:514:MET:CE	2.49	0.43
4:D:53:LEU:HD11	4:D:76:LEU:CD1	2.49	0.43
1:A:76:ASN:HA	12:A:657:HOH:O	2.19	0.42
1:A:550:HIS:CE1	1:A:552:ARG:HG2	2.54	0.42
1:A:559:VAL:HB	1:A:580:TRP:HB2	1.99	0.42
1:A:264:LEU:HD13	1:A:365:HIS:CE1	2.54	0.42
4:D:43:TRP:O	4:D:47:ARG:HG2	2.19	0.42
1:A:72:MET:H	1:A:128:GLN:HE21	1.67	0.42
2:B:68:GLY:HA2	7:B:302:FES:S1	2.59	0.42
2:B:198:PHE:CD2	2:B:201:GLU:HG3	2.54	0.42
1:A:91:LEU:O	1:A:583:HIS:CE1	2.72	0.42
1:A:239:THR:CG2	1:A:588:VAL:HG13	2.49	0.42
2:B:65:CYS:SG	2:B:68:GLY:N	2.92	0.42
1:A:254:HIS:HB2	1:A:365:HIS:CG	2.55	0.42
1:A:63:GLY:N	6:A:701:OAA:O5	2.52	0.42
3:C:52:LEU:CD1	3:C:97:PRO:HB2	2.50	0.42
1:A:149:CYS:HA	1:A:154:THR:CG2	2.50	0.42
1:A:72:MET:HE3	1:A:127:TYR:HA	2.01	0.42
1:A:485:ARG:HB3	1:A:490:LEU:HD11	2.02	0.42
2:B:102:LEU:HD22	2:B:166:THR:CG2	2.41	0.42
1:A:100:MET:SD	1:A:404:VAL:HG21	2.60	0.42
1:A:264:LEU:HD22	5:A:700:FAD:H6	2.01	0.41
2:B:66:ARG:HD2	2:B:66:ARG:O	2.20	0.41
1:A:198:GLU:O	1:A:515:VAL:HG13	2.21	0.41
4:D:124:VAL:HG13	4:D:128:LYS:HG2	2.02	0.41
1:A:81:PHE:O	1:A:85:VAL:HG12	2.20	0.41
1:A:116:MET:HA	1:A:161:THR:HG21	2.02	0.41
1:A:374:ASN:HB3	1:A:376:LYS:H	1.84	0.41
1:A:346:MET:HA	1:A:351:VAL:H	1.85	0.41
1:A:409:ARG:NH2	6:A:701:OAA:O1	2.54	0.41
3:C:96:PHE:HB3	3:C:97:PRO:CD	2.51	0.41
1:A:351:VAL:HG13	1:A:356:GLU:HG3	2.02	0.41
3:C:62:SER:HB2	3:C:66:LEU:HD12	2.02	0.40
4:D:112:THR:O	4:D:116:LEU:HG	2.21	0.40
1:A:57:HIS:NE2	5:A:700:FAD:C8	2.82	0.40
1:A:330:PRO:HA	1:A:331:PRO:HD3	1.96	0.40
1:A:10:SER:C	1:A:12:GLN:H	2.24	0.40
1:A:345:ALA:O	1:A:349:ALA:HB3	2.20	0.40

*Continued on next page...*



*Continued from previous page...*

Atom-1	Atom-2	Distance(Å)	Clash(Å)
1:A:575:PRO:HG2	1:A:578:GLU:HB2	2.02	0.40
1:A:254:HIS:CD2	1:A:256:THR:H	2.39	0.40
2:B:71:GLY:HA3	2:B:159:ILE:CG2	2.52	0.40
1:A:401:CYS:C	1:A:403:SER:H	2.23	0.40

There are no symmetry-related clashes.

## 5.3 Torsion angles

### 5.3.1 Protein backbone ⓘ

In the following table, the Percentiles column shows the percent Ramachandran outliers of the chain as a percentile score with respect to all X-ray entries followed by that with respect to entries of similar resolution. The Analysed column shows the number of residues for which the backbone conformation was analysed, and the total number of residues.

Mol	Chain	Analysed	Favoured	Allowed	Outliers	Percentiles	
1	A	611/622 (98%)	559 (92%)	46 (8%)	6 (1%)	22	44
2	B	237/252 (94%)	217 (92%)	17 (7%)	3 (1%)	18	34
3	C	136/140 (97%)	130 (96%)	6 (4%)	0	100	100
4	D	100/103 (97%)	97 (97%)	3 (3%)	0	100	100
All	All	1084/1117 (97%)	1003 (92%)	72 (7%)	9 (1%)	27	52

All (9) Ramachandran outliers are listed below:

Mol	Chain	Res	Type
1	A	374	ASN
1	A	151	ALA
1	A	569	GLN
2	B	24	THR
2	B	74	ALA
1	A	317	PRO
2	B	73	CYS
1	A	286	GLU
1	A	260	GLY

### 5.3.2 Protein sidechains ⓘ

In the following table, the Percentiles column shows the percent sidechain outliers of the chain as a percentile score with respect to all X-ray entries followed by that with respect to entries of similar resolution. The Analysed column shows the number of residues for which the sidechain conformation was analysed, and the total number of residues.

Mol	Chain	Analysed	Rotameric	Outliers	Percentiles	
1	A	499/506 (99%)	464 (93%)	35 (7%)	21	40
2	B	214/221 (97%)	200 (94%)	14 (6%)	24	46
3	C	117/118 (99%)	108 (92%)	9 (8%)	18	34
4	D	76/76 (100%)	68 (90%)	8 (10%)	10	18
All	All	906/921 (98%)	840 (93%)	66 (7%)	20	38

All (66) residues with a non-rotameric sidechain are listed below:

Mol	Chain	Res	Type
1	A	12	GLN
1	A	32	LEU
1	A	59	VAL
1	A	65	ILE
1	A	73	GLU
1	A	131	PHE
1	A	154	THR
1	A	157	SER
1	A	165	ARG
1	A	167	LEU
1	A	170	ASP
1	A	171	THR
1	A	258	ILE
1	A	298	ARG
1	A	303	ARG
1	A	313	ARG
1	A	315	CYS
1	A	332	GLU
1	A	344	THR
1	A	358	ILE
1	A	368	MET
1	A	374	ASN
1	A	403	SER
1	A	438	LYS
1	A	448	GLU
1	A	453	ASN

*Continued on next page...*

*Continued from previous page...*

Mol	Chain	Res	Type
1	A	458	ARG
1	A	486	VAL
1	A	488	SER
1	A	505	GLN
1	A	514	MET
1	A	561	GLU
1	A	568	ILE
1	A	588	VAL
1	A	590	VAL
2	B	51	ILE
2	B	63	ARG
2	B	66	ARG
2	B	69	ILE
2	B	87	ARG
2	B	146	ILE
2	B	147	GLU
2	B	166	THR
2	B	189	ARG
2	B	192	ILE
2	B	205	LYS
2	B	214	ARG
2	B	217	THR
2	B	230	ASN
3	C	30	ILE
3	C	42	SER
3	C	43	ILE
3	C	52	LEU
3	C	76	LEU
3	C	80	LEU
3	C	81	CYS
3	C	122	LEU
3	C	123	THR
4	D	44	THR
4	D	47	ARG
4	D	56	LEU
4	D	63	ASN
4	D	76	LEU
4	D	78	LEU
4	D	108	LEU
4	D	136	LEU

Some sidechains can be flipped to improve hydrogen bonding and reduce clashes. All (31) such sidechains are listed below:

Mol	Chain	Res	Type
1	A	12	GLN
1	A	44	ASN
1	A	80	HIS
1	A	113	ASN
1	A	128	GLN
1	A	143	GLN
1	A	156	HIS
1	A	160	HIS
1	A	246	GLN
1	A	254	HIS
1	A	321	HIS
1	A	384	ASN
1	A	408	ASN
1	A	453	ASN
1	A	474	GLN
1	A	480	HIS
1	A	527	GLN
1	A	550	HIS
1	A	571	GLN
1	A	579	HIS
2	B	39	ASN
2	B	92	ASN
2	B	121	GLN
2	B	174	ASN
2	B	220	ASN
2	B	230	ASN
3	C	17	ASN
3	C	23	ASN
3	C	29	HIS
3	C	104	ASN
4	D	98	GLN

### 5.3.3 RNA ⓘ

There are no RNA chains in this entry.

## 5.4 Non-standard residues in protein, DNA, RNA chains ⓘ

There are no non-standard protein/DNA/RNA residues in this entry.

## 5.5 Carbohydrates ⓘ

There are no carbohydrates in this entry.

## 5.6 Ligand geometry ⓘ

7 ligands are modelled in this entry.

In the following table, the Counts columns list the number of bonds (or angles) for which Mogul statistics could be retrieved, the number of bonds (or angles) that are observed in the model and the number of bonds (or angles) that are defined in the chemical component dictionary. The Link column lists molecule types, if any, to which the group is linked. The Z score for a bond length (or angle) is the number of standard deviations the observed value is removed from the expected value. A bond length (or angle) with  $|Z| > 2$  is considered an outlier worth inspection. RMSZ is the root-mean-square of all Z scores of the bond lengths (or angles).

Mol	Type	Chain	Res	Link	Bond lengths			Bond angles		
					Counts	RMSZ	# $ Z  > 2$	Counts	RMSZ	# $ Z  > 2$
5	FAD	A	700	1	58,58,58	1.13	5 (8%)	85,89,89	2.07	15 (17%)
6	OAA	A	701	-	6,8,8	18.42	4 (66%)	7,10,10	11.32	1 (14%)
7	FES	B	302	2	0,4,4	0.00	-	0,4,4	0.00	-
8	SF4	B	303	2	12,12,12	3.95	10 (83%)	0,24,24	0.00	-
9	F3S	B	304	2	3,9,9	18.24	3 (100%)	0,15,15	0.00	-
10	HEM	C	1305	3,4	49,50,50	5.84	24 (48%)	46,82,82	2.30	11 (23%)
11	PCI	D	1	-	12,12,12	2.03	5 (41%)	18,18,18	0.91	0

In the following table, the Chirals column lists the number of chiral outliers, the number of chiral centers analysed, the number of these observed in the model and the number defined in the chemical component dictionary. Similar counts are reported in the Torsion and Rings columns. '-' means no outliers of that kind were identified.

Mol	Type	Chain	Res	Link	Chirals	Torsions	Rings
5	FAD	A	700	1	-	0/34/50/50	0/1/6/6
6	OAA	A	701	-	-	1/6/8/8	0/0/0/0
7	FES	B	302	2	-	0/0/4/4	0/0/1/1
8	SF4	B	303	2	-	0/0/48/48	0/0/5/5
9	F3S	B	304	2	-	0/0/24/24	0/0/3/3
10	HEM	C	1305	3,4	-	0/14/114/114	0/0/8/8
11	PCI	D	1	-	-	0/0/0/0	0/1/1/1

All (51) bond length outliers are listed below:

Mol	Chain	Res	Type	Atoms	Z	Observed(Å)	Ideal(Å)
6	A	701	OAA	C2-C1	-37.95	1.26	1.49
6	A	701	OAA	C2-C3	-23.75	1.26	1.51
10	C	1305	HEM	C3D-C4D	-21.37	1.39	1.44
9	B	304	F3S	S3-FE4	-21.05	2.19	2.33
10	C	1305	HEM	C2B-C1B	-19.78	1.39	1.44
10	C	1305	HEM	C2D-C1D	-19.77	1.39	1.44
9	B	304	F3S	S3-FE3	-17.80	2.21	2.33
9	B	304	F3S	S3-FE1	-15.45	2.22	2.33
10	C	1305	HEM	CHB-C1B	8.73	1.48	1.35
10	C	1305	HEM	CHA-C4D	8.17	1.47	1.35
8	B	303	SF4	S2-FE4	-6.66	2.28	2.33
10	C	1305	HEM	CHC-C1C	6.49	1.48	1.36
10	C	1305	HEM	CHD-C4C	6.19	1.48	1.36
8	B	303	SF4	S4-FE3	-5.17	2.29	2.33
8	B	303	SF4	S1-FE3	-4.84	2.30	2.33
10	C	1305	HEM	C3B-C4B	-4.56	1.39	1.44
10	C	1305	HEM	FE-NA	4.34	2.11	1.92
8	B	303	SF4	S1-FE2	-4.28	2.30	2.33
6	A	701	OAA	O3-C3	4.27	1.33	1.23
8	B	303	SF4	S3-FE4	-4.10	2.30	2.33
8	B	303	SF4	S3-FE1	-4.00	2.30	2.33
8	B	303	SF4	S2-FE3	-3.94	2.30	2.33
10	C	1305	HEM	CHC-C4B	3.84	1.48	1.39
10	C	1305	HEM	CHD-C1D	3.72	1.48	1.39
10	C	1305	HEM	C2A-C3A	3.60	1.48	1.37
11	D	1	PCI	C4-CL3	3.58	1.80	1.72
8	B	303	SF4	S4-FE2	-3.37	2.31	2.33
10	C	1305	HEM	FE-ND	3.33	2.09	1.97
10	C	1305	HEM	FE-NC	3.29	2.10	1.97
5	A	700	FAD	C9A-C5X	3.26	1.49	1.42
10	C	1305	HEM	FE-NB	3.24	2.09	1.97
10	C	1305	HEM	C1A-C2A	3.22	1.49	1.43
11	D	1	PCI	C6-CL5	3.21	1.79	1.72
8	B	303	SF4	S2-FE1	-3.18	2.31	2.33
5	A	700	FAD	C1'-C2'	3.13	1.54	1.51
6	A	701	OAA	C3-C4	-3.06	1.45	1.54
5	A	700	FAD	C8-C7	2.99	1.49	1.40
10	C	1305	HEM	C1A-CHA	2.95	1.48	1.39
10	C	1305	HEM	C4A-CHB	2.85	1.47	1.39
11	D	1	PCI	C3-CL2	2.84	1.79	1.72
10	C	1305	HEM	C3C-CAC	2.83	1.49	1.40
11	D	1	PCI	C5-CL4	2.83	1.78	1.72
11	D	1	PCI	C2-CL1	2.67	1.78	1.72

Continued on next page...

*Continued from previous page...*

Mol	Chain	Res	Type	Atoms	Z	Observed(Å)	Ideal(Å)
10	C	1305	HEM	C3B-CAB	2.62	1.48	1.40
10	C	1305	HEM	C4D-ND	-2.53	1.34	1.39
10	C	1305	HEM	C3D-C2D	-2.47	1.39	1.43
5	A	700	FAD	C4A-N9A	-2.32	1.34	1.37
10	C	1305	HEM	C2C-C1C	2.30	1.49	1.43
10	C	1305	HEM	C3C-C2C	2.24	1.47	1.43
8	B	303	SF4	S3-FE2	-2.15	2.31	2.33
5	A	700	FAD	C10-N10	2.01	1.43	1.38

All (27) bond angle outliers are listed below:

Mol	Chain	Res	Type	Atoms	Z	Observed(°)	Ideal(°)
6	A	701	OAA	C1-C2-C3	29.84	168.16	114.01
10	C	1305	HEM	C3A-C4A-NA	9.85	116.85	109.41
5	A	700	FAD	N3A-C2A-N1A	-8.20	121.85	128.71
5	A	700	FAD	O4B-C1B-N9A	7.85	115.74	108.44
5	A	700	FAD	C2-N1-C10	7.10	122.14	114.98
10	C	1305	HEM	C1A-C2A-C3A	-4.81	101.94	106.92
5	A	700	FAD	C4X-N5-C5X	4.77	122.06	116.69
5	A	700	FAD	C2'-C1'-N10	-4.71	106.20	112.45
10	C	1305	HEM	C4A-C3A-C2A	-4.51	103.86	107.00
5	A	700	FAD	C4X-C10-N1	-4.41	118.33	122.73
10	C	1305	HEM	CHC-C1C-NC	-3.97	121.28	124.73
5	A	700	FAD	C9A-N10-C10	-3.49	118.34	121.77
5	A	700	FAD	N3A-C4A-N9A	3.32	131.42	125.43
10	C	1305	HEM	CHD-C1D-ND	-3.23	121.90	124.58
10	C	1305	HEM	CHC-C4B-NB	-2.99	122.10	124.58
10	C	1305	HEM	C2A-C1A-NA	2.82	113.65	109.73
10	C	1305	HEM	C4D-ND-C1D	-2.58	102.52	105.16
5	A	700	FAD	C4A-C5A-N7A	-2.55	107.34	109.52
5	A	700	FAD	C2A-N3A-C4A	2.54	121.24	114.01
5	A	700	FAD	C5A-C4A-N3A	-2.51	120.23	125.70
10	C	1305	HEM	C3B-C4B-NB	-2.45	112.24	114.00
10	C	1305	HEM	C4A-NA-C1A	-2.33	103.69	106.76
10	C	1305	HEM	C3A-C4A-CHB	-2.31	121.63	126.00
5	A	700	FAD	C1'-C2'-C3'	2.24	116.23	109.82
5	A	700	FAD	C3B-C2B-C1B	2.15	104.27	100.91
5	A	700	FAD	C1B-N9A-C4A	-2.09	123.03	126.64
5	A	700	FAD	C4'-C3'-C2'	-2.04	108.65	113.25

There are no chirality outliers.

All (1) torsion outliers are listed below:

Mol	Chain	Res	Type	Atoms
6	A	701	OAA	O5-C4-C3-C2

There are no ring outliers.

## 5.7 Other polymers ⓘ

There are no such residues in this entry.

## 5.8 Polymer linkage issues

There are no chain breaks in this entry.



## 6 Fit of model and data ⓘ

### 6.1 Protein, DNA and RNA chains ⓘ

In the following table, the column labelled ‘#RSRZ> 2’ contains the number (and percentage) of RSRZ outliers, followed by percent RSRZ outliers for the chain as percentile scores relative to all X-ray entries and entries of similar resolution. The OWAB column contains the minimum, median, 95<sup>th</sup> percentile and maximum values of the occupancy-weighted average B-factor per residue. The column labelled ‘Q< 0.9’ lists the number of (and percentage) of residues with an average occupancy less than 0.9.

Mol	Chain	Analysed	<RSRZ>	#RSRZ>2	OWAB(Å <sup>2</sup> )	Q<0.9
1	A	613/622 (98%)	0.38	43 (7%) 16 13	33, 56, 98, 108	0
2	B	239/252 (94%)	0.36	16 (6%) 17 15	37, 52, 72, 76	0
3	C	138/140 (98%)	0.26	9 (6%) 18 15	50, 64, 89, 92	0
4	D	102/103 (99%)	0.34	7 (6%) 17 14	48, 65, 74, 77	0
All	All	1092/1117 (97%)	0.36	75 (6%) 17 14	33, 58, 92, 108	0

All (75) RSRZ outliers are listed below:

Mol	Chain	Res	Type	RSRZ
3	C	82	LEU	6.0
4	D	35	SER	6.0
3	C	80	LEU	5.8
2	B	11	ILE	4.7
1	A	280	GLN	4.6
2	B	65	CYS	4.2
1	A	226	SER	4.1
3	C	84	PRO	3.9
2	B	70	CYS	3.7
2	B	69	ILE	3.6
1	A	317	PRO	3.6
3	C	81	CYS	3.5
2	B	13	LYS	3.4
1	A	263	CYS	3.3
3	C	77	VAL	3.3
4	D	130	VAL	3.1
1	A	227	ALA	3.1
1	A	230	SER	3.0
2	B	25	GLY	2.9
1	A	229	THR	2.9
1	A	57	HIS	2.9

*Continued on next page...*

*Continued from previous page...*

Mol	Chain	Res	Type	RSRZ
3	C	74	LEU	2.9
4	D	126	ILE	2.8
1	A	61	ALA	2.8
2	B	34	GLU	2.8
4	D	95	ASP	2.8
3	C	143	MET	2.8
1	A	216	GLY	2.8
1	A	277	ILE	2.8
1	A	12	GLN	2.8
2	B	64	SER	2.7
1	A	215	GLY	2.7
1	A	322	VAL	2.7
2	B	68	GLY	2.7
1	A	488	SER	2.6
1	A	366	TYR	2.6
1	A	314	GLY	2.5
1	A	54	THR	2.4
2	B	212	LEU	2.4
1	A	155	GLY	2.4
2	B	72	SER	2.4
2	B	71	GLY	2.4
4	D	99	LYS	2.4
1	A	365	HIS	2.4
1	A	58	THR	2.4
1	A	487	GLY	2.3
3	C	86	LEU	2.3
2	B	134	GLU	2.3
1	A	397	GLY	2.3
1	A	572	GLN	2.3
1	A	264	LEU	2.3
1	A	14	PRO	2.3
2	B	85	CYS	2.3
1	A	285	MET	2.3
2	B	35	ILE	2.2
1	A	56	SER	2.2
1	A	355	LYS	2.2
3	C	83	GLY	2.2
1	A	214	THR	2.2
1	A	436	GLY	2.1
1	A	225	THR	2.1
1	A	461	ASN	2.1
1	A	228	HIS	2.1

*Continued on next page...*

*Continued from previous page...*

Mol	Chain	Res	Type	RSRZ
1	A	286	GLU	2.1
1	A	232	GLY	2.1
1	A	313	ARG	2.1
2	B	93	LEU	2.1
1	A	262	GLY	2.1
4	D	135	LYS	2.1
1	A	275	ILE	2.1
1	A	491	GLN	2.1
4	D	62	LEU	2.1
1	A	318	GLU	2.0
1	A	266	THR	2.0
1	A	566	LYS	2.0

## 6.2 Non-standard residues in protein, DNA, RNA chains ⓘ

There are no non-standard protein/DNA/RNA residues in this entry.

## 6.3 Carbohydrates ⓘ

There are no carbohydrates in this entry.

## 6.4 Ligands ⓘ

In the following table, the Atoms column lists the number of modelled atoms in the group and the number defined in the chemical component dictionary. LLDF column lists the quality of electron density of the group with respect to its neighbouring residues in protein, DNA or RNA chains. The B-factors column lists the minimum, median, 95<sup>th</sup> percentile and maximum values of B factors of atoms in the group. The column labelled 'Q< 0.9' lists the number of atoms with occupancy less than 0.9.

Mol	Type	Chain	Res	Atoms	RSR	LLDF	B-factors(Å <sup>2</sup> )	Q<0.9
6	OAA	A	701	9/9	0.30	0.99	77,77,78,78	0
10	HEM	C	1305	43/43	0.22	0.97	69,73,74,75	0
5	FAD	A	700	53/53	0.27	0.02	34,38,41,42	0
8	SF4	B	303	8/8	0.17	-0.47	34,35,36,36	0
9	F3S	B	304	7/7	0.14	-0.55	35,40,41,43	0
7	FES	B	302	4/4	0.20	-1.63	38,39,41,42	0
11	PCI	D	1	12/12	0.12	-1.97	34,35,38,38	0

## 6.5 Other polymers ⓘ

There are no such residues in this entry.