



# wwPDB X-ray Structure Validation Summary Report

Apr 8, 2014 – 11:51 PM EDT

PDB ID : 3SP9  
Title : Structural basis for iloprost as a dual PPARalpha/delta agonist  
Authors : Rong, H.; Li, Y.  
Deposited on : 2011-07-01  
Resolution : 2.30 Å(reported)

This is a wwPDB validation summary report for a publicly released PDB entry.

We welcome your comments at [validation@mail.wwpdb.org](mailto:validation@mail.wwpdb.org)

A user guide is available at <http://wwpdb.org/ValidationPDFNotes.html>

---

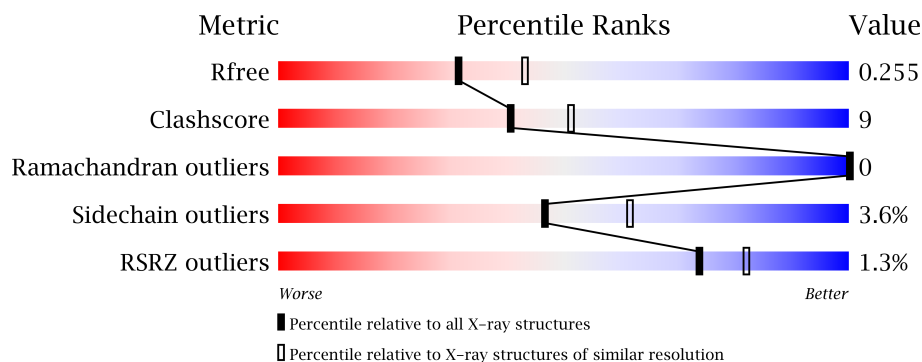
The following versions of software and data (see [references](#)) were used in the production of this report:

MolProbity : 4.02b-467  
Mogul : **FAILED**  
Xtriage (Phenix) : dev-1439  
EDS : stable22978  
Percentile statistics : 21963  
Refmac : 5.8.0049  
CCP4 : 6.3.0 (Settle)  
Ideal geometry (proteins) : Engh & Huber (2001)  
Ideal geometry (DNA, RNA) : Parkinson et. al. (1996)  
Validation Pipeline (wwPDB-VP) : stable22978

# 1 Overall quality at a glance

The reported resolution of this entry is 2.30 Å.

Percentile scores (ranging between 0-100) for global validation metrics of the entry are shown in the following graphic. The table shows the number of entries on which the scores are based.



Metric	Whole archive (#Entries)	Similar resolution (#Entries, resolution range(Å))
$R_{free}$	66092	2929 (2.30-2.30)
Clashscore	79885	3679 (2.30-2.30)
Ramachandran outliers	78287	3642 (2.30-2.30)
Sidechain outliers	78261	3641 (2.30-2.30)
RSRZ outliers	66119	2930 (2.30-2.30)

The table below summarises the geometric issues observed across the polymeric chains and their fit to the electron density. The red, orange, yellow and green segments on the lower bar indicate the fraction of residues that contain outliers for  $\geq 3$ , 2, 1 and 0 types of geometric quality criteria. The upper red bar (where present) indicates the fraction of residues that have poor fit to the electron density.

Mol	Chain	Length	Quality of chain
1	A	281	
1	B	281	

## 2 Entry composition

There are 3 unique types of molecules in this entry. The entry contains 4760 atoms, of which 0 are hydrogen and 0 are deuterium.

In the tables below, the ZeroOcc column contains the number of atoms modelled with zero occupancy, the AltConf column contains the number of residues with at least one atom in alternate conformation and the Trace column contains the number of residues modelled with at most 2 atoms.

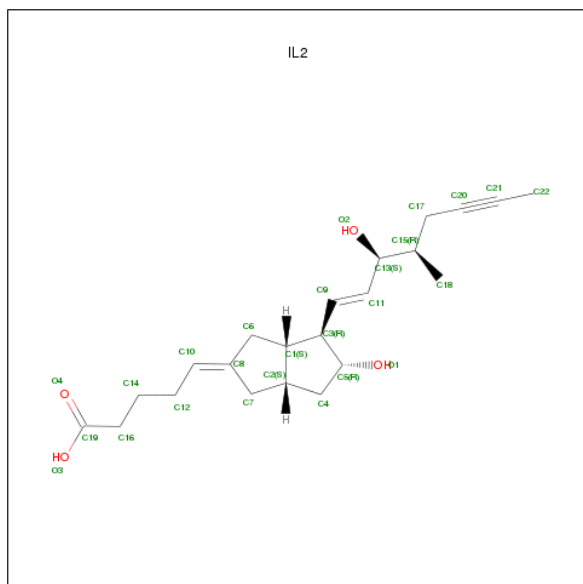
- Molecule 1 is a protein called Peroxisome proliferator-activatedreceptor delta.

Mol	Chain	Residues	Atoms					ZeroOcc	AltConf	Trace
1	A	269	Total	C	N	O	S	0	0	0
			2167	1404	365	388	10			
1	B	267	Total	C	N	O	S	0	0	0
			2156	1398	363	385	10			

There are 24 discrepancies between the modelled and reference sequences:

Chain	Residue	Modelled	Actual	Comment	Reference
A	161	HIS	-	EXPRESSION TAG	UNP Q03181
A	162	HIS	-	EXPRESSION TAG	UNP Q03181
A	163	HIS	-	EXPRESSION TAG	UNP Q03181
A	164	HIS	-	EXPRESSION TAG	UNP Q03181
A	165	HIS	-	EXPRESSION TAG	UNP Q03181
A	166	HIS	-	EXPRESSION TAG	UNP Q03181
A	167	LEU	-	EXPRESSION TAG	UNP Q03181
A	168	VAL	-	EXPRESSION TAG	UNP Q03181
A	169	PRO	-	EXPRESSION TAG	UNP Q03181
A	170	ARG	-	EXPRESSION TAG	UNP Q03181
A	171	GLY	-	EXPRESSION TAG	UNP Q03181
A	172	SER	-	EXPRESSION TAG	UNP Q03181
B	161	HIS	-	EXPRESSION TAG	UNP Q03181
B	162	HIS	-	EXPRESSION TAG	UNP Q03181
B	163	HIS	-	EXPRESSION TAG	UNP Q03181
B	164	HIS	-	EXPRESSION TAG	UNP Q03181
B	165	HIS	-	EXPRESSION TAG	UNP Q03181
B	166	HIS	-	EXPRESSION TAG	UNP Q03181
B	167	LEU	-	EXPRESSION TAG	UNP Q03181
B	168	VAL	-	EXPRESSION TAG	UNP Q03181
B	169	PRO	-	EXPRESSION TAG	UNP Q03181
B	170	ARG	-	EXPRESSION TAG	UNP Q03181
B	171	GLY	-	EXPRESSION TAG	UNP Q03181
B	172	SER	-	EXPRESSION TAG	UNP Q03181

- Molecule 2 is (5E)-5-[(3AS,4R,5R,6AS)-5-HYDROXY-4-[(1E,3S,4R)-3-HYDROXY-4-METHYLOCT-1-EN-6-YN-1-YL]HEXAHYDROPENTALEN-2(1H)-YLIDENE]PENTANOIC ACID (three-letter code: IL2) (formula: C<sub>22</sub>H<sub>32</sub>O<sub>4</sub>).



Mol	Chain	Residues	Atoms			ZeroOcc	AltConf
2	A	1	Total	C	O	0	0
			26	22	4		
2	B	1	Total	C	O	0	0
			26	22	4		

- Molecule 3 is water.

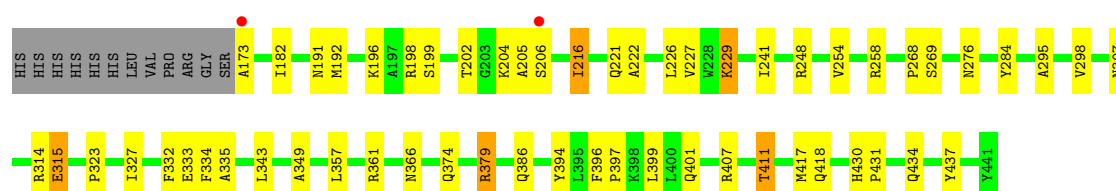
Mol	Chain	Residues	Atoms		ZeroOcc	AltConf
3	A	198	Total	O	0	0
			198	198		
3	B	187	Total	O	0	0
			187	187		

### 3 Residue-property plots

These plots are drawn for all protein, RNA and DNA chains in the entry. The first graphic for a chain summarises the proportions of errors displayed in the second graphic. The second graphic shows the sequence view annotated by issues in geometry and electron density. Residues are color-coded according to the number of geometric quality criteria for which they contain at least one outlier: green = 0, yellow = 1, orange = 2 and red = 3 or more. A red dot above a residue indicates a poor fit to the electron density ( $RSRZ > 2$ ). Stretches of 2 or more consecutive residues without any outlier are shown as a green connector. Residues present in the sample, but not in the model, are shown in grey.

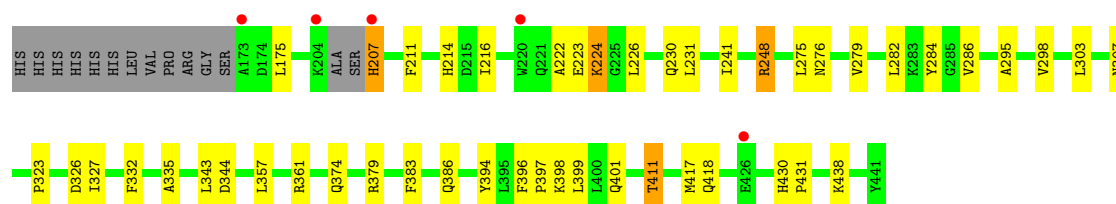
- Molecule 1: Peroxisome proliferator-activatedreceptor delta

Chain A: 



- Molecule 1: Peroxisome proliferator-activatedreceptor delta

Chain B: 



## 4 Data and refinement statistics

Property	Value	Source
Space group	P 1 21 1	Depositor
Cell constants a, b, c, $\alpha$ , $\beta$ , $\gamma$	49.12Å 111.91Å 55.01Å 90.00° 93.15° 90.00°	Depositor
Resolution (Å)	36.88 – 2.30 37.63 – 2.23	Depositor EDS
% Data completeness (in resolution range)	99.3 (36.88-2.30) 99.2 (37.63-2.23)	Depositor EDS
$R_{merge}$	(Not available)	Depositor
$R_{sym}$	(Not available)	Depositor
$\langle I/\sigma(I) \rangle$ <sup>1</sup>	5.62 (at 2.22Å)	Xtriage
Refinement program	PHENIX (phenix.refine: 1.5.2)	Depositor
R, $R_{free}$	0.195 , 0.253 0.200 , 0.255	Depositor DCC
$R_{free}$ test set	1464 reflections (5.11%)	DCC
Wilson B-factor (Å <sup>2</sup> )	17.3	Xtriage
Anisotropy	0.010	Xtriage
Bulk solvent $k_{sol}$ (e/Å <sup>3</sup> ), $B_{sol}$ (Å <sup>2</sup> )	0.33 , 23.7	EDS
Estimated twinning fraction	No twinning to report.	Xtriage
L-test for twinning	$\langle  L  \rangle = 0.49$ , $\langle L^2 \rangle = 0.32$	Xtriage
Outliers	0 of 28679 reflections	Xtriage
$F_o, F_c$ correlation	0.92	EDS
Total number of atoms	4760	wwPDB-VP
Average B, all atoms (Å <sup>2</sup> )	20.0	wwPDB-VP

Xtriage's analysis on translational NCS is as follows: *The largest off-origin peak in the Patterson function is 6.16% of the height of the origin peak. No significant pseudotranslation is detected.*

<sup>1</sup>Intensities estimated from amplitudes.

## 5 Model quality

### 5.1 Standard geometry

Bond lengths and bond angles in the following residue types are not validated in this section: IL2

The Z score for a bond length (or angle) is the number of standard deviations the observed value is removed from the expected value. A bond length (or angle) with  $|Z| > 5$  is considered an outlier worth inspection. RMSZ is the root-mean-square of all Z scores of the bond lengths (or angles).

Mol	Chain	Bond lengths		Bond angles	
		RMSZ	# $ Z  > 5$	RMSZ	# $ Z  > 5$
1	A	0.67	5/2215 (0.2%)	0.62	1/2995 (0.0%)
1	B	0.43	1/2203 (0.0%)	0.54	0/2977
All	All	0.56	6/4418 (0.1%)	0.58	1/5972 (0.0%)

Chiral center outliers are detected by calculating the chiral volume of a chiral center and verifying if the center is modelled as a planar moiety or with the opposite hand. A planarity outlier is detected by checking planarity of atoms in a peptide group, atoms in a mainchain group or atoms of a sidechain that are expected to be planar.

Mol	Chain	#Chirality outliers	#Planarity outliers
1	A	0	1

The worst 5 of 6 bond length outliers are listed below:

Mol	Chain	Res	Type	Atoms	Z	Observed(Å)	Ideal(Å)
1	A	315	GLU	CD-OE1	-13.82	1.10	1.25
1	A	315	GLU	CD-OE2	-11.92	1.12	1.25
1	A	315	GLU	CB-CG	-7.92	1.37	1.52
1	A	315	GLU	C-O	-6.74	1.10	1.23
1	A	206	SER	N-CA	-6.53	1.33	1.46

All (1) bond angle outliers are listed below:

Mol	Chain	Res	Type	Atoms	Z	Observed(°)	Ideal(°)
1	A	315	GLU	OE1-CD-OE2	-10.98	110.12	123.30

There are no chirality outliers.

All (1) planarity outliers are listed below:

Mol	Chain	Res	Type	Group
1	A	205	ALA	Peptide

## 5.2 Close contacts ⓘ

In the following table, the Non-H and H(model) columns list the number of non-hydrogen atoms and hydrogen atoms in the chain respectively. The H(added) column lists the number of hydrogens added by MolProbity. The Clashes column lists the number of clashes within the asymmetric unit, and the number in parentheses is this value normalized per 1000 atoms of the molecule in the chain. The Symm-Clashes column gives symmetry related clashes, in the same way as for the Clashes column.

Mol	Chain	Non-H	H(model)	H(added)	Clashes	Symm-Clashes
1	A	2167	0	2210	47	0
1	B	2156	0	2199	40	0
2	A	26	0	31	0	0
2	B	26	0	31	0	0
3	A	198	0	0	11	0
3	B	187	0	0	7	0
All	All	4760	0	4471	82	0

Clashscore is defined as the number of clashes calculated for the entry per 1000 atoms (including hydrogens) of the entry. The overall clashscore for this entry is 9.

The worst 5 of 82 close contacts within the same asymmetric unit are listed below.

Atom-1	Atom-2	Distance(Å)	Clash(Å)
1:B:230:GLN:HE21	1:B:231:LEU:H	1.08	1.01
1:A:202:THR:OG1	1:A:204:LYS:HE3	1.82	0.80
1:A:268:PRO:O	1:A:269:SER:HB2	1.83	0.77
1:B:230:GLN:NE2	1:B:231:LEU:H	1.83	0.73
1:A:198:ARG:NH2	3:A:553:HOH:O	2.21	0.73

There are no symmetry-related clashes.

## 5.3 Torsion angles

### 5.3.1 Protein backbone ⓘ

In the following table, the Percentiles column shows the percent Ramachandran outliers of the chain as a percentile score with respect to all X-ray entries followed by that with respect to entries of similar resolution. The Analysed column shows the number of residues for which the backbone conformation was analysed, and the total number of residues.



Mol	Chain	Analysed	Favoured	Allowed	Outliers	Percentiles	
1	A	267/281 (95%)	258 (97%)	9 (3%)	0	100	100
1	B	263/281 (94%)	254 (97%)	9 (3%)	0	100	100
All	All	530/562 (94%)	512 (97%)	18 (3%)	0	100	100

There are no Ramachandran outliers to report.

### 5.3.2 Protein sidechains ⓘ

In the following table, the Percentiles column shows the percent sidechain outliers of the chain as a percentile score with respect to all X-ray entries followed by that with respect to entries of similar resolution. The Analysed column shows the number of residues for which the sidechain conformation was analysed, and the total number of residues.

Mol	Chain	Analysed	Rotameric	Outliers	Percentiles	
1	A	237/248 (96%)	229 (97%)	8 (3%)	49	64
1	B	236/248 (95%)	227 (96%)	9 (4%)	44	59
All	All	473/496 (95%)	456 (96%)	17 (4%)	47	61

5 of 17 residues with a non-rotameric sidechain are listed below:

Mol	Chain	Res	Type
1	A	411	THR
1	B	207	HIS
1	B	332	PHE
1	A	386	GLN
1	B	379	ARG

Some sidechains can be flipped to improve hydrogen bonding and reduce clashes. 5 of 11 such sidechains are listed below:

Mol	Chain	Res	Type
1	A	401	GLN
1	A	418	GLN
1	B	276	ASN
1	A	276	ASN
1	B	230	GLN

### 5.3.3 RNA ⓘ

There are no RNA chains in this entry.

## 5.4 Non-standard residues in protein, DNA, RNA chains ⓘ

Mogul failed to run properly - this section will therefore be empty.

## 5.5 Carbohydrates ⓘ

Mogul failed to run properly - this section will therefore be empty.

## 5.6 Ligand geometry ⓘ

Mogul failed to run properly - this section will therefore be empty.

## 5.7 Other polymers ⓘ

Mogul failed to run properly - this section will therefore be empty.

## 5.8 Polymer linkage issues

There are no chain breaks in this entry.

## 6 Fit of model and data

### 6.1 Protein, DNA and RNA chains

In the following table, the column labelled ‘#RSRZ> 2’ contains the number (and percentage) of RSRZ outliers, followed by percent RSRZ outliers for the chain as percentile scores relative to all X-ray entries and entries of similar resolution. The OWAB column contains the minimum, median, 95<sup>th</sup> percentile and maximum values of the occupancy-weighted average B-factor per residue. The column labelled ‘Q< 0.9’ lists the number of (and percentage) of residues with an average occupancy less than 0.9.

Mol	Chain	Analysed	<RSRZ>	#RSRZ>2	OWAB(Å <sup>2</sup> )	Q<0.9
1	A	269/281 (95%)	-0.10	2 (0%) 84 91	8, 18, 34, 46	0
1	B	267/281 (95%)	-0.01	5 (1%) 64 73	9, 19, 36, 52	0
All	All	536/562 (95%)	-0.06	7 (1%) 74 82	8, 18, 36, 52	0

The worst 5 of 7 RSRZ outliers are listed below:

Mol	Chain	Res	Type	RSRZ
1	A	173	ALA	4.8
1	B	173	ALA	4.4
1	B	207	HIS	3.8
1	A	206	SER	2.9
1	B	204	LYS	2.4

### 6.2 Non-standard residues in protein, DNA, RNA chains

There are no non-standard protein/DNA/RNA residues in this entry.

### 6.3 Carbohydrates

There are no carbohydrates in this entry.

### 6.4 Ligands

In the following table, the Atoms column lists the number of modelled atoms in the group and the number defined in the chemical component dictionary. LLDF column lists the quality of electron density of the group with respect to its neighbouring residues in protein, DNA or RNA chains. The B-factors column lists the minimum, median, 95<sup>th</sup> percentile and maximum values of B factors of atoms in the group. The column labelled ‘Q< 0.9’ lists the number of atoms with occupancy less than 0.9.

Mol	Type	Chain	Res	Atoms	RSR	LLDF	B-factors( $\text{\AA}^2$ )	Q<0.9
2	IL2	B	901	26/26	0.16	1.90	10,15,25,34	0
2	IL2	A	901	26/26	0.15	1.35	10,15,22,33	0

## 6.5 Other polymers ⓘ

There are no such residues in this entry.