



Full wwPDB X-ray Structure Validation Report

Feb 28, 2014 – 12:21 PM GMT

PDB ID : 1T5A
Title : Human Pyruvate Kinase M2
Authors : Dombrauckas, J.D.; Santarsiero, B.D.; Mesecar, A.D.
Deposited on : 2004-05-03
Resolution : 2.80 Å(reported)

This is a full wwPDB validation report for a publicly released PDB entry.
We welcome your comments at validation@mail.wwpdb.org
A user guide is available at <http://wwpdb.org/ValidationPDFNotes.html>

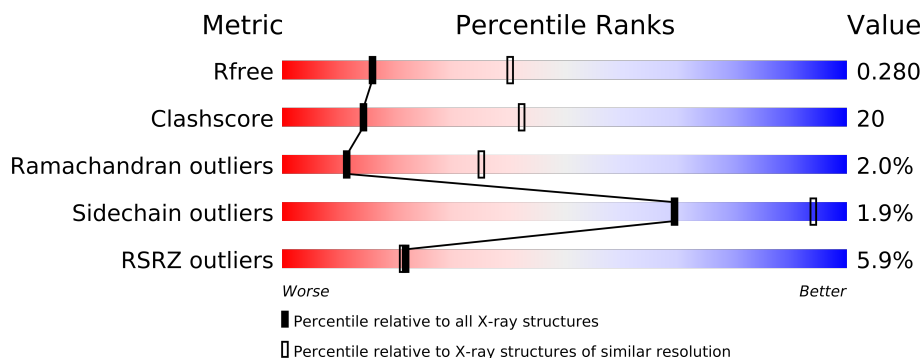
The following versions of software and data (see [references](#)) were used in the production of this report:

MolProbity : 4.02b-467
Mogul : 1.15 2013
Xtriage (Phenix) : dev-1323
EDS : stable22639
Percentile statistics : 21963
Refmac : 5.8.0049
CCP4 : 6.3.0 (Settle)
Ideal geometry (proteins) : Engh & Huber (2001)
Ideal geometry (DNA, RNA) : Parkinson et. al. (1996)
Validation Pipeline (wwPDB-VP) : stable22683

1 Overall quality at a glance

The reported resolution of this entry is 2.80 Å.

Percentile scores (ranging between 0-100) for global validation metrics of the entry are shown in the following graphic. The table shows the number of entries on which the scores are based.



Metric	Whole archive (#Entries)	Similar resolution (#Entries, resolution range(Å))
R_{free}	66092	1799 (2.80-2.80)
Clashscore	79885	2295 (2.80-2.80)
Ramachandran outliers	78287	2252 (2.80-2.80)
Sidechain outliers	78261	2254 (2.80-2.80)
RSRZ outliers	66119	1802 (2.80-2.80)

The table below summarises the geometric issues observed across the polymeric chains and their fit to the electron density. The red, orange, yellow and green segments on the lower bar indicate the fraction of residues that contain outliers for ≥ 3 , 2, 1 and 0 types of geometric quality criteria. The upper red bar (where present) indicates the fraction of residues that have poor fit to the electron density.

Mol	Chain	Length	Quality of chain
1	A	567	
1	B	567	
1	C	567	
1	D	567	

The following table lists non-polymeric compounds that are outliers for geometric or electron-density-fit criteria:

Mol	Type	Chain	Res	Geometry	Electron density
3	OXL	C	533	-	X
5	MG	C	603	-	X
7	GOL	A	703	-	X
7	GOL	B	704	-	X

Continued on next page...

Continued from previous page...

Mol	Type	Chain	Res	Geometry	Electron density
7	GOL	B	705	-	X
7	GOL	C	705	-	X
7	GOL	C	707	-	X
7	GOL	C	709	-	X
7	GOL	D	706	-	X
7	GOL	D	708	-	X
7	GOL	D	709	-	X

2 Entry composition

There are 8 unique types of molecules in this entry. The entry contains 16271 atoms, of which 0 are hydrogen and 0 are deuterium.

In the tables below, the ZeroOcc column contains the number of atoms modelled with zero occupancy, the AltConf column contains the number of residues with at least one atom in alternate conformation and the Trace column contains the number of residues modelled with at most 2 atoms.

- Molecule 1 is a protein called Pyruvate kinase, M2 isozyme.

Mol	Chain	Residues	Atoms					ZeroOcc	AltConf	Trace
1	A	519	Total	C	N	O	S	0	0	0
			3971	2496	704	746	25			
1	B	519	Total	C	N	O	S	0	0	0
			3971	2496	704	746	25			
1	C	519	Total	C	N	O	S	0	0	0
			3971	2496	704	746	25			
1	D	519	Total	C	N	O	S	0	0	0
			3971	2496	704	746	25			

There are 148 discrepancies between the modelled and reference sequences:

Chain	Residue	Modelled	Actual	Comment	Reference
A	-35	MET	-	CLONING ARTIFACT	UNP P14618
A	-34	ARG	-	CLONING ARTIFACT	UNP P14618
A	-33	GLY	-	CLONING ARTIFACT	UNP P14618
A	-32	SER	-	CLONING ARTIFACT	UNP P14618
A	-31	HIS	-	CLONING ARTIFACT	UNP P14618
A	-30	HIS	-	CLONING ARTIFACT	UNP P14618
A	-29	HIS	-	CLONING ARTIFACT	UNP P14618
A	-28	HIS	-	CLONING ARTIFACT	UNP P14618
A	-27	HIS	-	CLONING ARTIFACT	UNP P14618
A	-26	HIS	-	CLONING ARTIFACT	UNP P14618
A	-25	GLY	-	CLONING ARTIFACT	UNP P14618
A	-24	MET	-	CLONING ARTIFACT	UNP P14618
A	-23	ALA	-	CLONING ARTIFACT	UNP P14618
A	-22	SER	-	CLONING ARTIFACT	UNP P14618
A	-21	MET	-	CLONING ARTIFACT	UNP P14618
A	-20	THR	-	CLONING ARTIFACT	UNP P14618
A	-19	GLY	-	CLONING ARTIFACT	UNP P14618
A	-18	GLY	-	CLONING ARTIFACT	UNP P14618
A	-17	GLN	-	CLONING ARTIFACT	UNP P14618
A	-16	GLN	-	CLONING ARTIFACT	UNP P14618
A	-15	MET	-	CLONING ARTIFACT	UNP P14618

Continued on next page...

Continued from previous page...

Chain	Residue	Modelled	Actual	Comment	Reference
A	-14	GLY	-	CLONING ARTIFACT	UNP P14618
A	-13	ARG	-	CLONING ARTIFACT	UNP P14618
A	-12	ASP	-	CLONING ARTIFACT	UNP P14618
A	-11	LEU	-	CLONING ARTIFACT	UNP P14618
A	-10	TYR	-	CLONING ARTIFACT	UNP P14618
A	-9	ASP	-	CLONING ARTIFACT	UNP P14618
A	-8	ASP	-	CLONING ARTIFACT	UNP P14618
A	-7	ASP	-	CLONING ARTIFACT	UNP P14618
A	-6	ASP	-	CLONING ARTIFACT	UNP P14618
A	-5	LYS	-	CLONING ARTIFACT	UNP P14618
A	-4	ASP	-	CLONING ARTIFACT	UNP P14618
A	-3	HIS	-	CLONING ARTIFACT	UNP P14618
A	-2	PRO	-	CLONING ARTIFACT	UNP P14618
A	-1	PHE	-	CLONING ARTIFACT	UNP P14618
A	0	THR	-	CLONING ARTIFACT	UNP P14618
A	1	MET	-	INITIATING MET	UNP P14618
B	-35	MET	-	CLONING ARTIFACT	UNP P14618
B	-34	ARG	-	CLONING ARTIFACT	UNP P14618
B	-33	GLY	-	CLONING ARTIFACT	UNP P14618
B	-32	SER	-	CLONING ARTIFACT	UNP P14618
B	-31	HIS	-	CLONING ARTIFACT	UNP P14618
B	-30	HIS	-	CLONING ARTIFACT	UNP P14618
B	-29	HIS	-	CLONING ARTIFACT	UNP P14618
B	-28	HIS	-	CLONING ARTIFACT	UNP P14618
B	-27	HIS	-	CLONING ARTIFACT	UNP P14618
B	-26	HIS	-	CLONING ARTIFACT	UNP P14618
B	-25	GLY	-	CLONING ARTIFACT	UNP P14618
B	-24	MET	-	CLONING ARTIFACT	UNP P14618
B	-23	ALA	-	CLONING ARTIFACT	UNP P14618
B	-22	SER	-	CLONING ARTIFACT	UNP P14618
B	-21	MET	-	CLONING ARTIFACT	UNP P14618
B	-20	THR	-	CLONING ARTIFACT	UNP P14618
B	-19	GLY	-	CLONING ARTIFACT	UNP P14618
B	-18	GLY	-	CLONING ARTIFACT	UNP P14618
B	-17	GLN	-	CLONING ARTIFACT	UNP P14618
B	-16	GLN	-	CLONING ARTIFACT	UNP P14618
B	-15	MET	-	CLONING ARTIFACT	UNP P14618
B	-14	GLY	-	CLONING ARTIFACT	UNP P14618
B	-13	ARG	-	CLONING ARTIFACT	UNP P14618
B	-12	ASP	-	CLONING ARTIFACT	UNP P14618
B	-11	LEU	-	CLONING ARTIFACT	UNP P14618
B	-10	TYR	-	CLONING ARTIFACT	UNP P14618

Continued on next page...

Continued from previous page...

Chain	Residue	Modelled	Actual	Comment	Reference
B	-9	ASP	-	CLONING ARTIFACT	UNP P14618
B	-8	ASP	-	CLONING ARTIFACT	UNP P14618
B	-7	ASP	-	CLONING ARTIFACT	UNP P14618
B	-6	ASP	-	CLONING ARTIFACT	UNP P14618
B	-5	LYS	-	CLONING ARTIFACT	UNP P14618
B	-4	ASP	-	CLONING ARTIFACT	UNP P14618
B	-3	HIS	-	CLONING ARTIFACT	UNP P14618
B	-2	PRO	-	CLONING ARTIFACT	UNP P14618
B	-1	PHE	-	CLONING ARTIFACT	UNP P14618
B	0	THR	-	CLONING ARTIFACT	UNP P14618
B	1	MET	-	INITIATING MET	UNP P14618
C	-35	MET	-	CLONING ARTIFACT	UNP P14618
C	-34	ARG	-	CLONING ARTIFACT	UNP P14618
C	-33	GLY	-	CLONING ARTIFACT	UNP P14618
C	-32	SER	-	CLONING ARTIFACT	UNP P14618
C	-31	HIS	-	CLONING ARTIFACT	UNP P14618
C	-30	HIS	-	CLONING ARTIFACT	UNP P14618
C	-29	HIS	-	CLONING ARTIFACT	UNP P14618
C	-28	HIS	-	CLONING ARTIFACT	UNP P14618
C	-27	HIS	-	CLONING ARTIFACT	UNP P14618
C	-26	HIS	-	CLONING ARTIFACT	UNP P14618
C	-25	GLY	-	CLONING ARTIFACT	UNP P14618
C	-24	MET	-	CLONING ARTIFACT	UNP P14618
C	-23	ALA	-	CLONING ARTIFACT	UNP P14618
C	-22	SER	-	CLONING ARTIFACT	UNP P14618
C	-21	MET	-	CLONING ARTIFACT	UNP P14618
C	-20	THR	-	CLONING ARTIFACT	UNP P14618
C	-19	GLY	-	CLONING ARTIFACT	UNP P14618
C	-18	GLY	-	CLONING ARTIFACT	UNP P14618
C	-17	GLN	-	CLONING ARTIFACT	UNP P14618
C	-16	GLN	-	CLONING ARTIFACT	UNP P14618
C	-15	MET	-	CLONING ARTIFACT	UNP P14618
C	-14	GLY	-	CLONING ARTIFACT	UNP P14618
C	-13	ARG	-	CLONING ARTIFACT	UNP P14618
C	-12	ASP	-	CLONING ARTIFACT	UNP P14618
C	-11	LEU	-	CLONING ARTIFACT	UNP P14618
C	-10	TYR	-	CLONING ARTIFACT	UNP P14618
C	-9	ASP	-	CLONING ARTIFACT	UNP P14618
C	-8	ASP	-	CLONING ARTIFACT	UNP P14618
C	-7	ASP	-	CLONING ARTIFACT	UNP P14618
C	-6	ASP	-	CLONING ARTIFACT	UNP P14618
C	-5	LYS	-	CLONING ARTIFACT	UNP P14618

Continued on next page...

Continued from previous page...

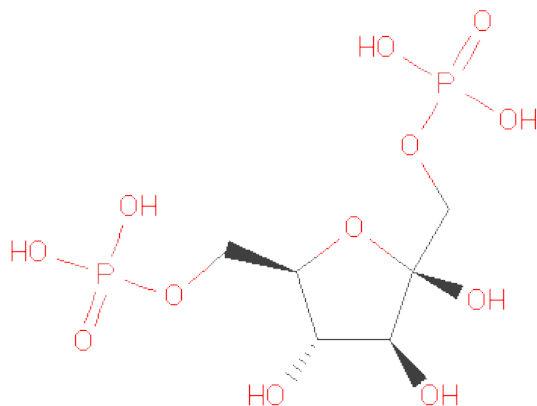
Chain	Residue	Modelled	Actual	Comment	Reference
C	-4	ASP	-	CLONING ARTIFACT	UNP P14618
C	-3	HIS	-	CLONING ARTIFACT	UNP P14618
C	-2	PRO	-	CLONING ARTIFACT	UNP P14618
C	-1	PHE	-	CLONING ARTIFACT	UNP P14618
C	0	THR	-	CLONING ARTIFACT	UNP P14618
C	1	MET	-	INITIATING MET	UNP P14618
D	-35	MET	-	CLONING ARTIFACT	UNP P14618
D	-34	ARG	-	CLONING ARTIFACT	UNP P14618
D	-33	GLY	-	CLONING ARTIFACT	UNP P14618
D	-32	SER	-	CLONING ARTIFACT	UNP P14618
D	-31	HIS	-	CLONING ARTIFACT	UNP P14618
D	-30	HIS	-	CLONING ARTIFACT	UNP P14618
D	-29	HIS	-	CLONING ARTIFACT	UNP P14618
D	-28	HIS	-	CLONING ARTIFACT	UNP P14618
D	-27	HIS	-	CLONING ARTIFACT	UNP P14618
D	-26	HIS	-	CLONING ARTIFACT	UNP P14618
D	-25	GLY	-	CLONING ARTIFACT	UNP P14618
D	-24	MET	-	CLONING ARTIFACT	UNP P14618
D	-23	ALA	-	CLONING ARTIFACT	UNP P14618
D	-22	SER	-	CLONING ARTIFACT	UNP P14618
D	-21	MET	-	CLONING ARTIFACT	UNP P14618
D	-20	THR	-	CLONING ARTIFACT	UNP P14618
D	-19	GLY	-	CLONING ARTIFACT	UNP P14618
D	-18	GLY	-	CLONING ARTIFACT	UNP P14618
D	-17	GLN	-	CLONING ARTIFACT	UNP P14618
D	-16	GLN	-	CLONING ARTIFACT	UNP P14618
D	-15	MET	-	CLONING ARTIFACT	UNP P14618
D	-14	GLY	-	CLONING ARTIFACT	UNP P14618
D	-13	ARG	-	CLONING ARTIFACT	UNP P14618
D	-12	ASP	-	CLONING ARTIFACT	UNP P14618
D	-11	LEU	-	CLONING ARTIFACT	UNP P14618
D	-10	TYR	-	CLONING ARTIFACT	UNP P14618
D	-9	ASP	-	CLONING ARTIFACT	UNP P14618
D	-8	ASP	-	CLONING ARTIFACT	UNP P14618
D	-7	ASP	-	CLONING ARTIFACT	UNP P14618
D	-6	ASP	-	CLONING ARTIFACT	UNP P14618
D	-5	LYS	-	CLONING ARTIFACT	UNP P14618
D	-4	ASP	-	CLONING ARTIFACT	UNP P14618
D	-3	HIS	-	CLONING ARTIFACT	UNP P14618
D	-2	PRO	-	CLONING ARTIFACT	UNP P14618
D	-1	PHE	-	CLONING ARTIFACT	UNP P14618
D	0	THR	-	CLONING ARTIFACT	UNP P14618

Continued on next page...

Continued from previous page...

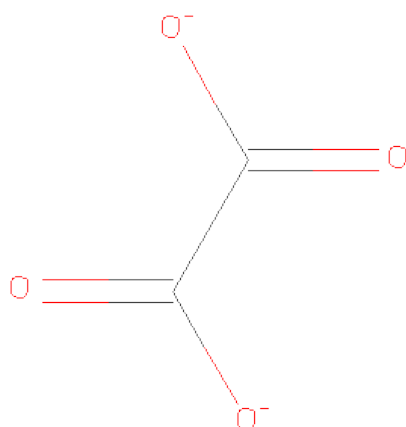
Chain	Residue	Modelled	Actual	Comment	Reference
D	1	MET	-	INITIATING MET	UNP P14618

- Molecule 2 is SUGAR (FRUCTOSE-1,6-DIPHOSPHATE) (three-letter code: FBP) (formula: $C_6H_{14}O_{12}P_2$).



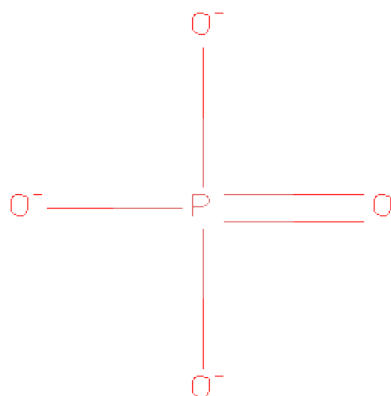
Mol	Chain	Residues	Atoms				ZeroOcc	AltConf
2	A	1	Total	C	O	P	0	0
			20	6	12	2		
2	B	1	Total	C	O	P	0	0
			20	6	12	2		
2	C	1	Total	C	O	P	0	0
			20	6	12	2		
2	D	1	Total	C	O	P	0	0
			20	6	12	2		

- Molecule 3 is OXALATE ION (three-letter code: OXL) (formula: C_2O_4).



Mol	Chain	Residues	Atoms			ZeroOcc	AltConf
3	A	1	Total	C	O	0	0
			6	2	4		
3	B	1	Total	C	O	0	0
			6	2	4		
3	C	1	Total	C	O	0	0
			6	2	4		
3	D	1	Total	C	O	0	0
			6	2	4		

- Molecule 4 is PHOSPHATE ION (three-letter code: PO4) (formula: O₄P).



Mol	Chain	Residues	Atoms	ZeroOcc	AltConf
4	A	1	Total O P 5 4 1	0	0
4	B	1	Total O P 5 4 1	0	0
4	C	1	Total O P 5 4 1	0	0
4	D	1	Total O P 5 4 1	0	0

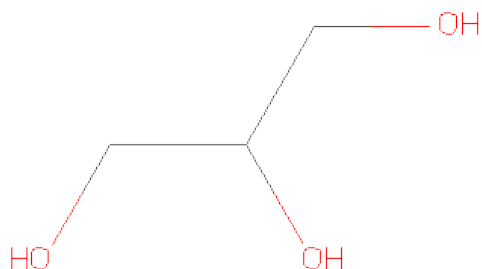
- Molecule 5 is MAGNESIUM ION (three-letter code: MG) (formula: Mg).

Mol	Chain	Residues	Atoms	ZeroOcc	AltConf
5	B	1	Total Mg 1 1	0	0
5	A	1	Total Mg 1 1	0	0
5	D	1	Total Mg 1 1	0	0
5	C	1	Total Mg 1 1	0	0

- Molecule 6 is POTASSIUM ION (three-letter code: K) (formula: K).

Mol	Chain	Residues	Atoms	ZeroOcc	AltConf
6	B	1	Total K 1 1	0	0
6	A	1	Total K 1 1	0	0
6	D	1	Total K 1 1	0	0
6	C	1	Total K 1 1	0	0

- Molecule 7 is GLYCEROL (three-letter code: GOL) (formula: C₃H₈O₃).



Mol	Chain	Residues	Atoms			ZeroOcc	AltConf
7	A	1	Total	C	O	0	0
			6	3	3		
7	B	1	Total	C	O	0	0
			6	3	3		
7	C	1	Total	C	O	0	0
			6	3	3		
7	D	1	Total	C	O	0	0
			6	3	3		
7	A	1	Total	C	O	0	0
			6	3	3		
7	B	1	Total	C	O	0	0
			6	3	3		
7	C	1	Total	C	O	0	0
			6	3	3		
7	D	1	Total	C	O	0	0
			6	3	3		
7	D	1	Total	C	O	0	0
			6	3	3		
7	C	1	Total	C	O	0	0
			6	3	3		
7	C	1	Total	C	O	0	0
			6	3	3		
7	A	1	Total	C	O	0	0
			6	3	3		
7	A	1	Total	C	O	0	0
			6	3	3		
7	B	1	Total	C	O	0	0
			6	3	3		

Continued on next page...

Continued from previous page...

Mol	Chain	Residues	Atoms			ZeroOcc	AltConf
7	C	1	Total 6	C 3	O 3	0	0
7	D	1	Total 6	C 3	O 3	0	0
7	A	1	Total 6	C 3	O 3	0	0
7	B	1	Total 6	C 3	O 3	0	0
7	C	1	Total 6	C 3	O 3	0	0
7	D	1	Total 6	C 3	O 3	0	0

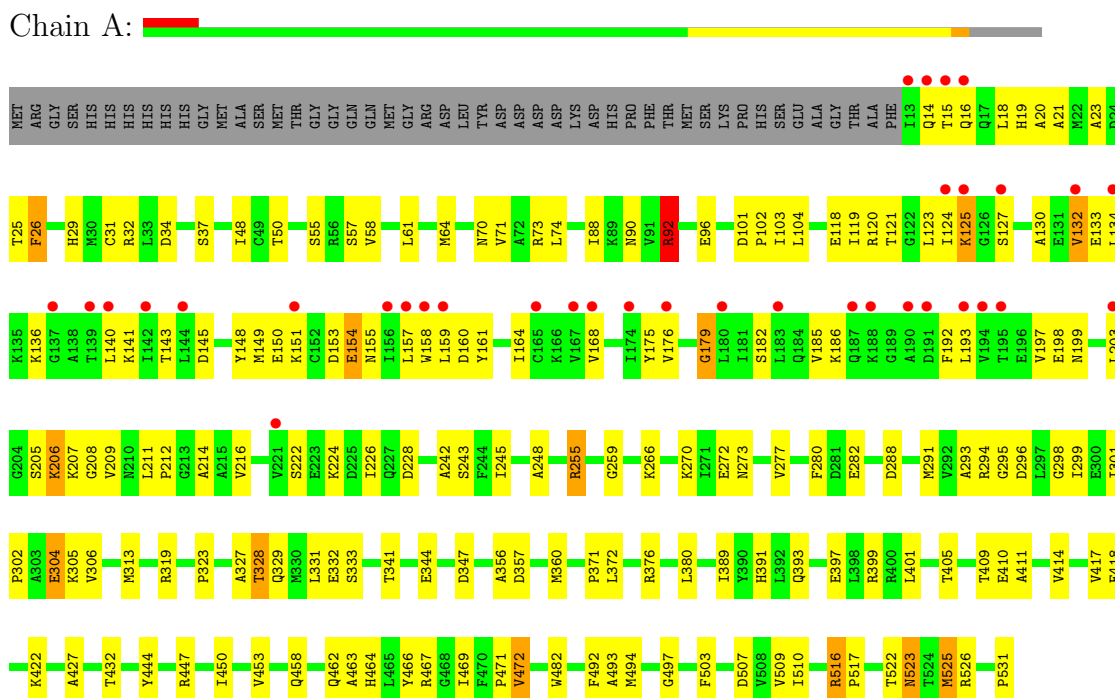
- Molecule 8 is water.

Mol	Chain	Residues	Atoms		ZeroOcc	AltConf
8	A	47	Total 47	O 47	0	0
8	B	28	Total 28	O 28	0	0
8	C	30	Total 30	O 30	0	0
8	D	30	Total 30	O 30	0	0

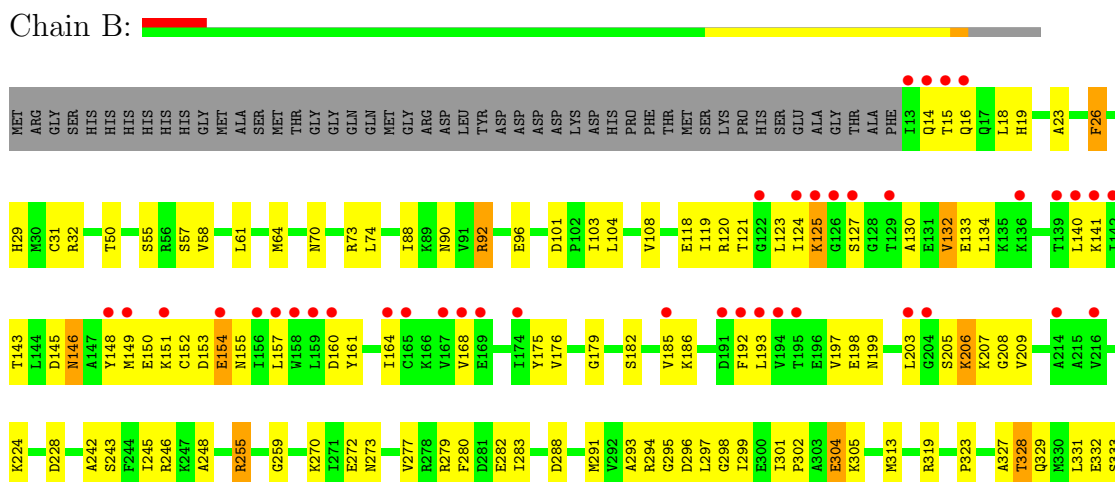
3 Residue-property plots

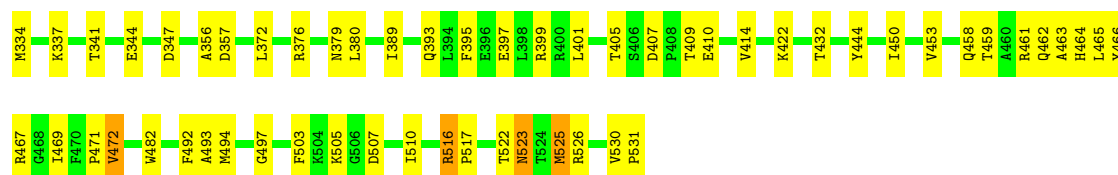
These plots are drawn for all protein, RNA and DNA chains in the entry. The first graphic for a chain summarises the proportions of errors displayed in the second graphic. The second graphic shows the sequence view annotated by issues in geometry and electron density. Residues are color-coded according to the number of geometric quality criteria for which they contain at least one outlier: green = 0, yellow = 1, orange = 2 and red = 3 or more. A red dot above a residue indicates a poor fit to the electron density ($RSRZ > 2$). Stretches of 2 or more consecutive residues without any outlier are shown as a green connector. Residues present in the sample, but not in the model, are shown in grey.

- Molecule 1: Pyruvate kinase, M2 isozyme



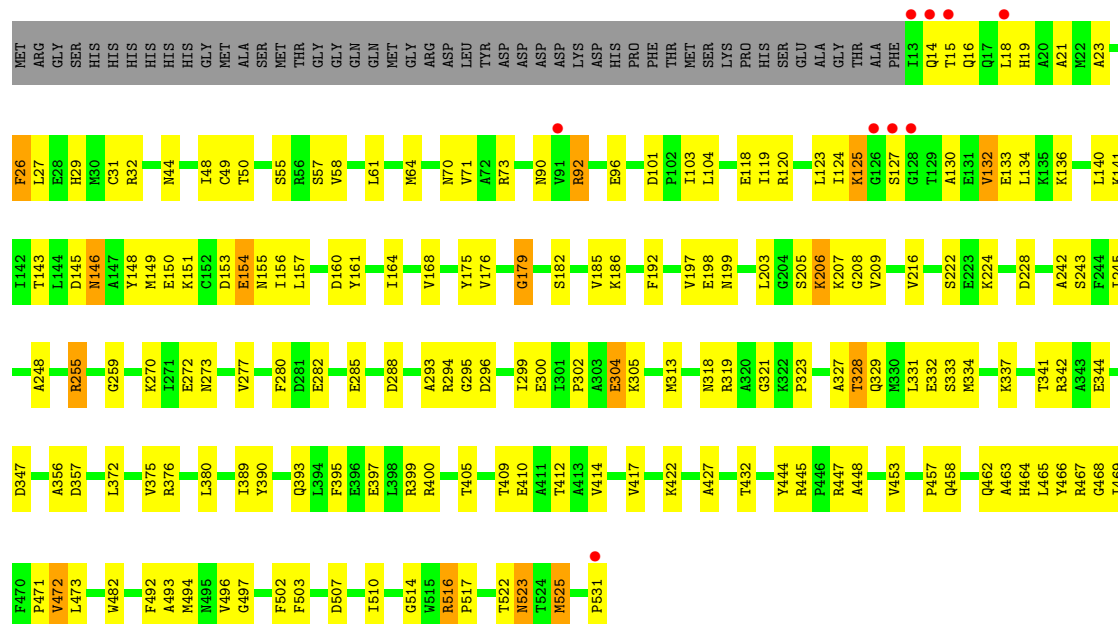
- Molecule 1: Pyruvate kinase, M2 isozyme





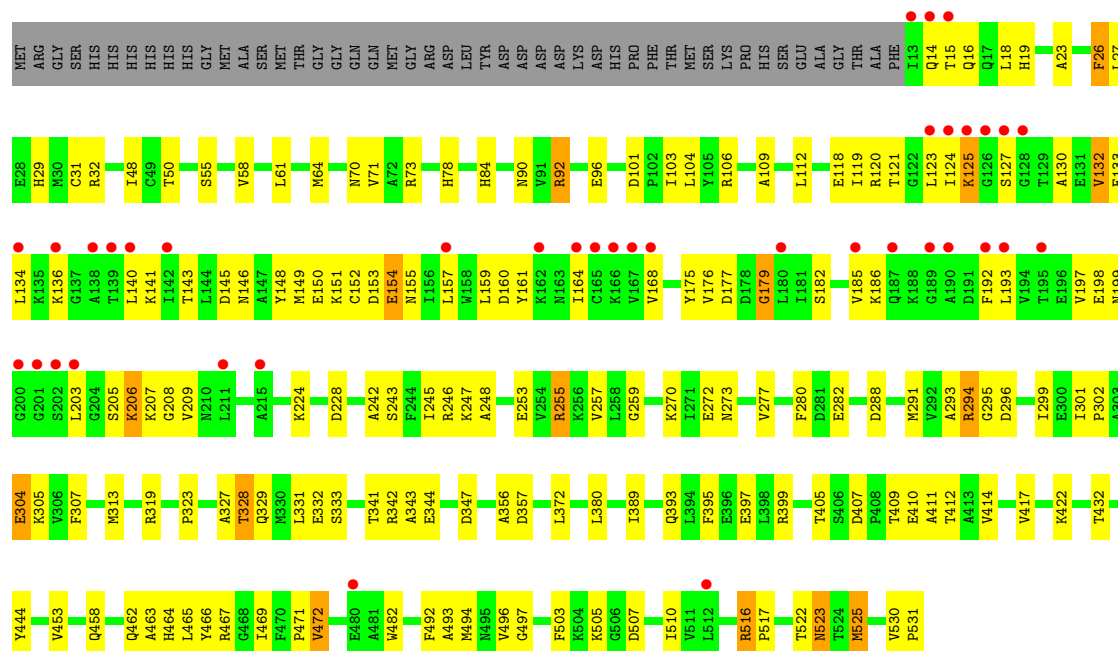
- Molecule 1: Pyruvate kinase, M2 isozyme

Chain C:



- Molecule 1: Pyruvate kinase, M2 isozyme

Chain D:



4 Data and refinement statistics

Property	Value	Source
Space group	P 21 21 21	Depositor
Cell constants a, b, c, α , β , γ	108.21Å 145.01Å 159.26Å 90.00° 90.00° 90.00°	Depositor
Resolution (Å)	20.00 – 2.80 48.30 – 2.80	Depositor EDS
% Data completeness (in resolution range)	96.4 (20.00-2.80) 96.5 (48.30-2.80)	Depositor EDS
R_{merge}	0.11	Depositor
R_{sym}	(Not available)	Depositor
$\langle I/\sigma(I) \rangle$ ¹	1.25 (at 2.81Å)	Xtriage
Refinement program	CNS 1.0	Depositor
R, R_{free}	0.231 , 0.278 0.235 , 0.280	Depositor DCC
R_{free} test set	3022 reflections (5.04%)	DCC
Wilson B-factor (Å ²)	66.9	Xtriage
Anisotropy	0.328	Xtriage
Bulk solvent k_{sol} (e/Å ³), B_{sol} (Å ²)	0.29 , 26.6	EDS
Estimated twinning fraction	No twinning to report.	Xtriage
L-test for twinning	$\langle L \rangle = 0.49$, $\langle L^2 \rangle = 0.32$	Xtriage
Outliers	0 of 60139 reflections	Xtriage
F_o, F_c correlation	0.93	EDS
Total number of atoms	16271	wwPDB-VP
Average B, all atoms (Å ²)	67.0	wwPDB-VP

Xtriage's analysis on translational NCS is as follows: *The largest off-origin peak in the Patterson function is 3.65% of the height of the origin peak. No significant pseudotranslation is detected.*

¹Intensities estimated from amplitudes.

5 Model quality

5.1 Standard geometry

Bond lengths and bond angles in the following residue types are not validated in this section: GOL, MG, FBP, K, OXL, PO4

The Z score for a bond length (or angle) is the number of standard deviations the observed value is removed from the expected value. A bond length (or angle) with $|Z| > 5$ is considered an outlier worth inspection. RMSZ is the root-mean-square of all Z scores of the bond lengths (or angles).

Mol	Chain	Bond lengths		Bond angles	
		RMSZ	# Z >5	RMSZ	# Z >5
1	A	0.53	0/4034	0.74	3/5448 (0.1%)
1	B	0.51	1/4034 (0.0%)	0.69	2/5448 (0.0%)
1	C	0.52	0/4034	0.69	2/5448 (0.0%)
1	D	0.50	0/4034	0.68	2/5448 (0.0%)
All	All	0.51	1/16136 (0.0%)	0.70	9/21792 (0.0%)

All (1) bond length outliers are listed below:

Mol	Chain	Res	Type	Atoms	Z	Observed(Å)	Ideal(Å)
1	B	379	ASN	CB-CG	5.22	1.63	1.51

All (9) bond angle outliers are listed below:

Mol	Chain	Res	Type	Atoms	Z	Observed(°)	Ideal(°)
1	A	92	ARG	NE-CZ-NH1	-14.04	113.28	120.30
1	A	92	ARG	NE-CZ-NH2	13.29	126.95	120.30
1	D	92	ARG	NE-CZ-NH1	7.58	124.09	120.30
1	A	92	ARG	CD-NE-CZ	7.46	134.04	123.60
1	B	92	ARG	NE-CZ-NH2	-6.94	116.83	120.30
1	D	92	ARG	NE-CZ-NH2	-5.87	117.36	120.30
1	B	92	ARG	NE-CZ-NH1	5.79	123.20	120.30
1	C	92	ARG	NE-CZ-NH1	5.39	122.99	120.30
1	C	92	ARG	NE-CZ-NH2	-5.31	117.64	120.30

There are no chirality outliers.

There are no planarity outliers.

5.2 Close contacts ⓘ

In the following table, the Non-H and H(model) columns list the number of non-hydrogen atoms and hydrogen atoms in the chain respectively. The H(added) column lists the number of hydrogens added by MolProbity. The Clashes column lists the number of clashes within the asymmetric unit, and the number in parentheses is this value normalized per 1000 atoms of the molecule in the chain. The Symm-Clashes column gives symmetry related clashes, in the same way as for the Clashes column.

Mol	Chain	Non-H	H(model)	H(added)	Clashes	Symm-Clashes
1	A	3971	0	4059	170	0
1	B	3971	0	4059	160	0
1	C	3971	0	4059	175	0
1	D	3971	0	4059	172	0
2	A	20	0	10	1	0
2	B	20	0	10	1	0
2	C	20	0	10	2	0
2	D	20	0	10	1	0
3	A	6	0	0	0	0
3	B	6	0	0	1	0
3	C	6	0	0	2	0
3	D	6	0	0	1	0
4	A	5	0	0	0	0
4	B	5	0	0	0	0
4	C	5	0	0	0	0
4	D	5	0	0	1	0
5	A	1	0	0	0	0
5	B	1	0	0	0	0
5	C	1	0	0	0	0
5	D	1	0	0	0	0
6	A	1	0	0	0	0
6	B	1	0	0	0	0
6	C	1	0	0	0	0
6	D	1	0	0	0	0
7	A	30	0	40	1	0
7	B	24	0	32	0	0
7	C	36	0	48	11	0
7	D	30	0	40	1	0
8	A	47	0	0	6	0
8	B	28	0	0	3	0
8	C	30	0	0	4	0
8	D	30	0	0	7	0
All	All	16271	0	16436	636	0

Clashscore is defined as the number of clashes calculated for the entry per 1000 atoms (including

hydrogens) of the entry. The overall clashscore for this entry is 20.

All (636) close contacts within the same asymmetric unit are listed below.

Atom-1	Atom-2	Distance(Å)	Clash(Å)
1:C:132:VAL:HG12	1:C:133:GLU:H	1.13	1.08
1:A:132:VAL:HG12	1:A:133:GLU:H	1.14	1.05
1:B:132:VAL:HG12	1:B:133:GLU:H	1.16	1.04
1:B:132:VAL:HG21	1:B:153:ASP:HA	1.42	1.01
1:D:132:VAL:HG12	1:D:133:GLU:H	1.19	1.00
1:D:132:VAL:HG21	1:D:153:ASP:HA	1.40	0.99
1:A:132:VAL:HG21	1:A:153:ASP:HA	1.47	0.97
1:B:380:LEU:HB3	1:D:304:GLU:HG2	1.49	0.94
1:B:248:ALA:HB2	1:B:282:GLU:HG2	1.51	0.93
1:C:132:VAL:HG21	1:C:153:ASP:HA	1.49	0.92
1:D:134:LEU:HD21	1:D:140:LEU:HD22	1.50	0.91
1:C:132:VAL:HG12	1:C:133:GLU:N	1.84	0.91
1:B:134:LEU:HD21	1:B:140:LEU:HD22	1.54	0.90
1:B:132:VAL:HG12	1:B:133:GLU:N	1.87	0.89
1:A:248:ALA:HB2	1:A:282:GLU:HG2	1.54	0.88
1:A:132:VAL:HG12	1:A:133:GLU:N	1.89	0.88
1:B:304:GLU:HG2	1:D:380:LEU:HB3	1.55	0.88
1:C:494:MET:HG2	1:C:531:PRO:HD2	1.57	0.87
1:D:132:VAL:HG12	1:D:133:GLU:N	1.90	0.86
1:D:248:ALA:HB2	1:D:282:GLU:HG2	1.56	0.86
1:A:134:LEU:HD21	1:A:140:LEU:HD22	1.56	0.86
1:A:494:MET:HG2	1:A:531:PRO:HD2	1.58	0.85
1:B:494:MET:HG2	1:B:531:PRO:HD2	1.59	0.85
1:D:494:MET:HG2	1:D:531:PRO:HD2	1.55	0.85
1:A:125:LYS:HE3	1:A:132:VAL:HG22	1.59	0.84
1:C:132:VAL:CG1	1:C:133:GLU:H	1.91	0.84
1:A:58:VAL:HG23	1:A:90:ASN:ND2	1.93	0.84
1:C:333:SER:HB3	1:C:344:GLU:OE1	1.77	0.84
1:C:248:ALA:HB2	1:C:282:GLU:HG2	1.61	0.82
1:C:445:ARG:HH22	7:C:707:GOL:H12	1.42	0.82
1:C:143:THR:HG22	1:C:145:ASP:H	1.45	0.81
1:D:127:SER:HB3	1:D:130:ALA:HB2	1.62	0.81
1:B:333:SER:HB3	1:B:344:GLU:OE1	1.80	0.80
1:A:333:SER:HB3	1:A:344:GLU:OE1	1.81	0.80
1:B:132:VAL:CG1	1:B:133:GLU:H	1.94	0.80
1:A:380:LEU:HB3	1:C:304:GLU:HG2	1.63	0.80
1:D:432:THR:HA	2:D:532:FBP:H61	1.63	0.80
1:A:127:SER:HB3	1:A:130:ALA:HB2	1.64	0.80
1:D:405:THR:HG21	1:D:410:GLU:HG2	1.64	0.80
1:D:132:VAL:HG11	1:D:154:GLU:N	1.97	0.79

Continued on next page...

Continued from previous page...

Atom-1	Atom-2	Distance(Å)	Clash(Å)
1:C:134:LEU:HD21	1:C:140:LEU:HD22	1.62	0.79
1:A:132:VAL:CG1	1:A:133:GLU:H	1.93	0.79
1:B:143:THR:HG22	1:B:145:ASP:H	1.48	0.79
1:B:58:VAL:HG23	1:B:90:ASN:ND2	1.97	0.79
1:A:399:ARG:NH2	1:B:399:ARG:NH2	2.31	0.79
1:D:58:VAL:HG23	1:D:90:ASN:ND2	1.97	0.79
1:C:482:TRP:NE1	1:C:517:PRO:HG3	1.98	0.78
1:D:482:TRP:NE1	1:D:517:PRO:HG3	1.98	0.78
1:C:127:SER:HB3	1:C:130:ALA:HB2	1.66	0.78
1:C:101:ASP:OD2	1:C:104:LEU:HD23	1.84	0.77
1:B:432:THR:HA	2:B:532:FBP:H61	1.66	0.77
1:B:124:ILE:HG23	1:B:132:VAL:HG23	1.65	0.77
1:A:124:ILE:HG23	1:A:132:VAL:HG23	1.66	0.77
1:D:125:LYS:HE3	1:D:132:VAL:HG22	1.67	0.77
1:C:58:VAL:HG23	1:C:90:ASN:ND2	2.00	0.77
1:A:132:VAL:HG11	1:A:154:GLU:N	1.99	0.77
1:B:132:VAL:HG11	1:B:154:GLU:N	1.98	0.77
1:D:143:THR:HG22	1:D:145:ASP:H	1.47	0.77
1:B:494:MET:CG	1:B:531:PRO:HD2	2.15	0.76
1:C:124:ILE:HG23	1:C:132:VAL:HG23	1.68	0.76
1:C:132:VAL:HG11	1:C:154:GLU:N	2.00	0.76
1:A:143:THR:HG22	1:A:145:ASP:H	1.50	0.76
1:D:124:ILE:HG23	1:D:132:VAL:HG23	1.66	0.76
1:C:399:ARG:NH2	1:D:399:ARG:NH2	2.32	0.76
1:A:101:ASP:OD2	1:A:104:LEU:HD23	1.85	0.76
1:B:127:SER:HB3	1:B:130:ALA:HB2	1.68	0.75
1:B:179:GLY:HA3	1:B:299:ILE:HD12	1.69	0.74
1:D:179:GLY:HA3	1:D:299:ILE:HD12	1.69	0.74
1:A:182:SER:OG	1:A:198:GLU:HB2	1.87	0.74
1:D:132:VAL:CG1	1:D:133:GLU:H	1.97	0.74
1:B:482:TRP:NE1	1:B:517:PRO:HG3	2.03	0.74
1:B:101:ASP:OD2	1:B:104:LEU:HD23	1.87	0.74
1:C:125:LYS:HE3	1:C:132:VAL:HG22	1.69	0.73
1:D:494:MET:CG	1:D:531:PRO:HD2	2.17	0.73
1:C:222:SER:HB3	8:C:710:HOH:O	1.88	0.73
1:D:333:SER:HB3	1:D:344:GLU:OE1	1.88	0.73
1:C:516:ARG:HG3	1:C:516:ARG:HH11	1.53	0.73
1:A:494:MET:CG	1:A:531:PRO:HD2	2.18	0.73
1:B:405:THR:HG21	1:B:410:GLU:HG2	1.71	0.73
1:C:445:ARG:HH12	7:C:707:GOL:H31	1.54	0.72
1:B:125:LYS:HE3	1:B:132:VAL:HG22	1.69	0.72
1:A:432:THR:HA	2:A:532:FBP:H61	1.71	0.72

Continued on next page...

Continued from previous page...

Atom-1	Atom-2	Distance(Å)	Clash(Å)
1:A:175:TYR:HB3	1:A:179:GLY:HA2	1.71	0.72
1:A:399:ARG:NH2	1:B:399:ARG:HH21	1.88	0.72
1:C:405:THR:HG21	1:C:410:GLU:HG2	1.71	0.72
1:C:179:GLY:HA3	1:C:299:ILE:HD12	1.71	0.72
1:D:175:TYR:HB3	1:D:179:GLY:HA2	1.71	0.71
1:C:132:VAL:HG11	1:C:154:GLU:H	1.55	0.71
1:C:494:MET:CG	1:C:531:PRO:HD2	2.20	0.71
1:B:132:VAL:HG11	1:B:154:GLU:H	1.55	0.70
1:B:175:TYR:HB3	1:B:179:GLY:HA2	1.73	0.70
1:B:453:VAL:HG21	1:B:493:ALA:HB2	1.74	0.70
1:C:422:LYS:HE3	1:D:405:THR:HG22	1.72	0.70
1:A:132:VAL:HG11	1:A:154:GLU:H	1.56	0.70
1:D:132:VAL:HG11	1:D:154:GLU:H	1.56	0.70
1:D:482:TRP:CD1	1:D:517:PRO:HG3	2.26	0.70
1:C:399:ARG:HH21	1:D:399:ARG:NH2	1.88	0.69
1:C:482:TRP:CD1	1:C:517:PRO:HG3	2.27	0.69
1:A:482:TRP:NE1	1:A:517:PRO:HG3	2.06	0.69
1:A:179:GLY:HA3	1:A:299:ILE:HD12	1.73	0.69
1:A:164:ILE:O	1:A:168:VAL:HG12	1.92	0.69
1:D:101:ASP:OD2	1:D:104:LEU:HD23	1.92	0.69
1:A:19:HIS:ND1	1:A:32:ARG:HD3	2.07	0.69
1:D:103:ILE:HG22	1:D:104:LEU:HD22	1.75	0.69
1:A:21:ALA:HB1	8:A:723:HOH:O	1.91	0.69
1:C:164:ILE:O	1:C:168:VAL:HG12	1.93	0.69
1:A:304:GLU:HG2	1:C:380:LEU:HB3	1.75	0.68
1:D:516:ARG:HH11	1:D:516:ARG:HG3	1.58	0.68
1:A:497:GLY:HA3	1:A:503:PHE:CZ	2.29	0.68
1:C:399:ARG:NH2	1:D:399:ARG:HH21	1.91	0.68
1:C:19:HIS:ND1	1:C:32:ARG:HD3	2.09	0.68
1:B:453:VAL:CG2	1:B:493:ALA:HB2	2.24	0.68
1:A:399:ARG:HH21	1:B:399:ARG:NH2	1.92	0.68
1:D:182:SER:OG	1:D:198:GLU:HB2	1.94	0.67
1:A:405:THR:HG22	1:B:422:LYS:HE3	1.77	0.67
1:C:243:SER:OG	1:C:270:LYS:HE2	1.95	0.67
1:D:255:ARG:HH11	1:D:255:ARG:HG3	1.59	0.67
1:A:482:TRP:CD1	1:A:517:PRO:HG3	2.29	0.67
1:A:141:LYS:HE3	1:A:192:PHE:CD2	2.30	0.67
1:C:175:TYR:HB3	1:C:179:GLY:HA2	1.77	0.66
1:D:329:GLN:HG2	1:D:332:GLU:CG	2.25	0.66
1:A:255:ARG:HG3	1:A:255:ARG:HH11	1.60	0.66
1:C:21:ALA:HB1	8:C:724:HOH:O	1.94	0.66
1:D:510:ILE:HG23	1:D:525:MET:HE2	1.78	0.66

Continued on next page...

Continued from previous page...

Atom-1	Atom-2	Distance(Å)	Clash(Å)
1:A:64:MET:CE	1:A:372:LEU:HD23	2.26	0.66
1:B:482:TRP:CD1	1:B:517:PRO:HG3	2.31	0.65
1:C:516:ARG:HG3	1:C:516:ARG:NH1	2.11	0.65
1:B:15:THR:HG22	1:B:16:GLN:HG2	1.78	0.65
1:C:453:VAL:HG21	1:C:493:ALA:HB2	1.77	0.65
1:A:405:THR:HG21	1:A:410:GLU:HG2	1.76	0.65
1:C:103:ILE:HG22	1:C:104:LEU:HD22	1.78	0.65
1:B:331:LEU:HD23	1:B:344:GLU:HB3	1.79	0.65
1:C:182:SER:OG	1:C:198:GLU:HB2	1.97	0.65
1:C:331:LEU:HD23	1:C:344:GLU:HB3	1.79	0.64
1:B:516:ARG:HG3	1:B:516:ARG:HH11	1.61	0.64
1:C:153:ASP:O	1:C:155:ASN:N	2.31	0.64
1:B:143:THR:CG2	1:B:145:ASP:HB3	2.28	0.64
1:B:182:SER:OG	1:B:198:GLU:HB2	1.97	0.64
1:A:143:THR:CG2	1:A:145:ASP:HB3	2.28	0.64
1:D:331:LEU:HD23	1:D:344:GLU:HB3	1.80	0.64
1:D:143:THR:CG2	1:D:145:ASP:HB3	2.29	0.63
1:B:494:MET:HG2	1:B:531:PRO:CD	2.27	0.63
1:D:494:MET:HG2	1:D:531:PRO:CD	2.28	0.63
1:A:298:GLY:HA3	1:C:342:ARG:NE	2.13	0.63
1:B:19:HIS:ND1	1:B:32:ARG:HD3	2.13	0.63
1:A:141:LYS:HE3	1:A:192:PHE:CG	2.34	0.63
1:B:15:THR:O	1:B:18:LEU:HG	1.99	0.62
1:B:64:MET:CE	1:B:372:LEU:HD23	2.28	0.62
1:D:134:LEU:CD2	1:D:140:LEU:HD22	2.25	0.62
1:A:329:GLN:HG2	1:A:332:GLU:CG	2.29	0.62
1:D:516:ARG:NH1	1:D:516:ARG:HG3	2.14	0.62
1:D:466:TYR:HB2	1:D:469:ILE:HD12	1.82	0.62
1:C:422:LYS:HE3	1:D:405:THR:CG2	2.30	0.62
1:D:19:HIS:ND1	1:D:32:ARG:HD3	2.14	0.62
1:C:280:PHE:CE1	1:C:313:MET:HG2	2.34	0.62
1:D:319:ARG:NH2	8:D:710:HOH:O	2.30	0.62
1:B:164:ILE:O	1:B:168:VAL:HG12	1.99	0.61
1:D:164:ILE:O	1:D:168:VAL:HG12	2.00	0.61
1:D:389:ILE:HD11	1:D:467:ARG:HH21	1.64	0.61
1:A:134:LEU:CD2	1:A:140:LEU:HD22	2.30	0.61
1:C:143:THR:CG2	1:C:145:ASP:HB3	2.30	0.61
1:C:405:THR:HG22	1:D:422:LYS:HE3	1.82	0.61
1:C:64:MET:CE	1:C:372:LEU:HD23	2.31	0.61
1:C:64:MET:HE2	1:C:372:LEU:HD23	1.81	0.61
1:A:389:ILE:HD11	1:A:467:ARG:HH21	1.66	0.61
1:B:466:TYR:HB2	1:B:469:ILE:HD12	1.82	0.61

Continued on next page...

Continued from previous page...

Atom-1	Atom-2	Distance(Å)	Clash(Å)
1:B:329:GLN:HG2	1:B:332:GLU:CG	2.31	0.61
1:A:15:THR:O	1:A:18:LEU:HG	2.00	0.60
1:C:255:ARG:HG3	1:C:255:ARG:HH11	1.64	0.60
1:D:119:ILE:HG12	1:D:161:TYR:HB2	1.84	0.60
1:D:64:MET:HE2	1:D:372:LEU:HD23	1.81	0.60
1:D:64:MET:CE	1:D:372:LEU:HD23	2.31	0.60
1:C:15:THR:O	1:C:18:LEU:HG	2.02	0.60
1:A:302:PRO:HG2	1:A:305:LYS:HD2	1.83	0.60
1:D:302:PRO:HG2	1:D:305:LYS:HD2	1.82	0.60
1:C:494:MET:HG2	1:C:531:PRO:CD	2.30	0.59
1:C:120:ARG:HA	1:C:207:LYS:O	2.02	0.59
1:B:153:ASP:O	1:B:155:ASN:N	2.35	0.59
1:D:453:VAL:HG21	1:D:493:ALA:HB2	1.82	0.59
1:B:302:PRO:HG2	1:B:305:LYS:HD2	1.84	0.59
1:A:242:ALA:HB1	1:A:245:ILE:HD11	1.84	0.59
1:A:453:VAL:HG21	1:A:493:ALA:HB2	1.85	0.59
1:A:15:THR:HG22	1:A:16:GLN:HG2	1.84	0.59
1:C:453:VAL:CG2	1:C:493:ALA:HB2	2.32	0.59
1:D:15:THR:O	1:D:18:LEU:HG	2.03	0.58
1:B:255:ARG:HH11	1:B:255:ARG:HG3	1.67	0.58
1:D:141:LYS:HE3	1:D:192:PHE:CD2	2.38	0.58
1:C:510:ILE:HG23	1:C:525:MET:HE2	1.85	0.58
1:A:472:VAL:HG13	1:A:492:PHE:CE2	2.39	0.58
1:A:329:GLN:HG2	1:A:332:GLU:HG3	1.85	0.58
1:B:516:ARG:NH1	1:B:516:ARG:HG3	2.19	0.58
1:C:389:ILE:HD11	1:C:467:ARG:HH21	1.69	0.58
1:A:120:ARG:HA	1:A:207:LYS:O	2.04	0.58
1:D:118:GLU:OE2	1:D:120:ARG:NH1	2.35	0.58
1:C:482:TRP:CE2	1:C:517:PRO:HG3	2.39	0.58
1:B:389:ILE:HD11	1:B:467:ARG:HH21	1.67	0.58
1:B:92:ARG:O	1:B:96:GLU:HG2	2.03	0.58
1:A:153:ASP:O	1:A:155:ASN:N	2.37	0.58
1:B:141:LYS:HE3	1:B:192:PHE:CG	2.39	0.58
1:C:329:GLN:HG2	1:C:332:GLU:CG	2.34	0.58
1:D:148:TYR:HD2	1:D:151:LYS:HD2	1.69	0.58
1:C:445:ARG:HH12	7:C:707:GOL:C3	2.17	0.57
1:C:321:GLY:HA2	7:C:707:GOL:O2	2.04	0.57
1:D:15:THR:HG22	1:D:16:GLN:HG2	1.86	0.57
1:B:472:VAL:HG13	1:B:492:PHE:CE2	2.39	0.57
1:A:447:ARG:HD3	8:A:753:HOH:O	2.03	0.57
1:A:64:MET:HE2	1:A:372:LEU:HD23	1.87	0.57
1:C:466:TYR:HB2	1:C:469:ILE:HD12	1.86	0.57

Continued on next page...

Continued from previous page...

Atom-1	Atom-2	Distance(Å)	Clash(Å)
1:D:482:TRP:CE2	1:D:517:PRO:HG3	2.39	0.57
1:C:294:ARG:HH22	1:C:347:ASP:CG	2.06	0.57
1:D:141:LYS:HE3	1:D:192:PHE:CG	2.40	0.57
1:A:176:VAL:HA	1:A:208:GLY:O	2.05	0.57
1:C:148:TYR:HD2	1:C:151:LYS:HD2	1.69	0.57
1:A:298:GLY:HA3	1:C:342:ARG:HE	1.68	0.57
1:A:140:LEU:HD21	1:A:157:LEU:HD22	1.85	0.56
1:C:118:GLU:OE2	1:C:120:ARG:NH1	2.34	0.56
1:B:176:VAL:HA	1:B:208:GLY:O	2.04	0.56
1:A:280:PHE:CE1	1:A:313:MET:HG2	2.40	0.56
1:B:140:LEU:HD21	1:B:157:LEU:HD22	1.87	0.56
1:B:482:TRP:CE2	1:B:517:PRO:HG3	2.40	0.56
1:D:463:ALA:HB3	1:D:471:PRO:HG3	1.87	0.56
1:C:294:ARG:NH2	1:C:347:ASP:OD1	2.33	0.56
1:B:148:TYR:HD2	1:B:151:LYS:HD2	1.68	0.56
1:D:395:PHE:CZ	1:D:399:ARG:HD3	2.40	0.56
1:D:255:ARG:HH11	1:D:255:ARG:CG	2.16	0.56
1:C:15:THR:HG22	1:C:16:GLN:HG2	1.87	0.56
1:A:453:VAL:CG2	1:A:493:ALA:HB2	2.34	0.56
1:B:70:ASN:HD22	1:B:464:HIS:CE1	2.24	0.56
1:D:92:ARG:O	1:D:96:GLU:HG2	2.05	0.56
1:D:294:ARG:HH22	1:D:347:ASP:CG	2.09	0.56
1:A:331:LEU:HD23	1:A:344:GLU:HB3	1.87	0.56
1:A:294:ARG:HH22	1:A:347:ASP:CG	2.08	0.56
1:C:92:ARG:O	1:C:96:GLU:HG2	2.06	0.56
1:D:323:PRO:HB3	1:D:465:LEU:O	2.06	0.56
1:A:186:LYS:HE2	1:A:186:LYS:HA	1.88	0.56
1:C:333:SER:CB	1:C:344:GLU:OE1	2.52	0.56
1:B:134:LEU:CD2	1:B:140:LEU:HD22	2.31	0.56
1:A:319:ARG:HH21	1:C:31:CYS:HB3	1.70	0.56
1:A:148:TYR:HD2	1:A:151:LYS:HD2	1.69	0.56
1:D:242:ALA:HB1	1:D:245:ILE:HD11	1.88	0.56
1:B:463:ALA:HB3	1:B:471:PRO:HG3	1.88	0.56
1:B:186:LYS:HE2	1:B:186:LYS:HA	1.87	0.56
1:A:494:MET:HG2	1:A:531:PRO:CD	2.32	0.56
1:A:143:THR:HG22	1:A:145:ASP:HB3	1.87	0.56
1:B:372:LEU:O	1:B:376:ARG:HG3	2.05	0.56
1:D:134:LEU:HB3	1:D:197:VAL:HG21	1.88	0.55
1:D:120:ARG:HA	1:D:207:LYS:O	2.07	0.55
1:C:472:VAL:HG13	1:C:492:PHE:CE2	2.40	0.55
1:A:510:ILE:HG23	1:A:525:MET:HE2	1.86	0.55
1:B:280:PHE:CE1	1:B:313:MET:HG2	2.41	0.55

Continued on next page...

Continued from previous page...

Atom-1	Atom-2	Distance(Å)	Clash(Å)
1:C:432:THR:HA	2:C:532:FBP:H61	1.88	0.55
1:D:356:ALA:O	1:D:467:ARG:NH1	2.39	0.55
1:D:453:VAL:CG2	1:D:493:ALA:HB2	2.36	0.55
1:D:472:VAL:HG13	1:D:492:PHE:CE2	2.41	0.55
1:D:329:GLN:HG2	1:D:332:GLU:HG3	1.87	0.55
1:A:255:ARG:CG	1:A:255:ARG:HH11	2.19	0.55
1:B:143:THR:HG22	1:B:145:ASP:HB3	1.88	0.55
1:B:141:LYS:HE3	1:B:192:PHE:CD2	2.41	0.55
1:C:514:GLY:HA3	2:C:532:FBP:O3	2.06	0.55
1:D:140:LEU:HD21	1:D:157:LEU:HD22	1.90	0.54
1:B:157:LEU:HD13	1:B:203:LEU:HD21	1.89	0.54
1:D:497:GLY:HA3	1:D:503:PHE:CZ	2.41	0.54
1:A:103:ILE:HG22	1:A:104:LEU:HD22	1.90	0.54
1:B:175:TYR:O	1:B:209:VAL:HA	2.07	0.54
1:C:302:PRO:HG2	1:C:305:LYS:HD2	1.89	0.54
1:D:143:THR:HG22	1:D:145:ASP:HB3	1.89	0.54
1:D:280:PHE:CE1	1:D:313:MET:HG2	2.43	0.54
1:D:393:GLN:O	1:D:397:GLU:HG3	2.08	0.54
1:D:153:ASP:O	1:D:155:ASN:N	2.40	0.54
1:D:157:LEU:HD13	1:D:203:LEU:HD21	1.89	0.54
1:B:243:SER:OG	1:B:270:LYS:HE2	2.08	0.54
1:D:224:LYS:HG2	1:D:228:ASP:OD2	2.07	0.54
1:A:466:TYR:HB2	1:A:469:ILE:HD12	1.90	0.54
1:B:333:SER:CB	1:B:344:GLU:OE1	2.52	0.54
1:C:255:ARG:CG	1:C:255:ARG:HH11	2.20	0.54
1:D:84:HIS:HD2	8:D:723:HOH:O	1.90	0.54
1:C:176:VAL:HA	1:C:208:GLY:O	2.08	0.54
1:D:176:VAL:HA	1:D:208:GLY:O	2.07	0.54
1:B:120:ARG:HA	1:B:207:LYS:O	2.07	0.54
1:D:294:ARG:NH2	1:D:347:ASP:OD1	2.40	0.54
1:B:295:GLY:CA	1:B:328:THR:HG21	2.38	0.54
1:A:157:LEU:HD13	1:A:203:LEU:HD21	1.89	0.54
1:C:516:ARG:NH1	1:C:517:PRO:O	2.41	0.54
1:B:294:ARG:NH2	1:B:347:ASP:OD1	2.40	0.54
1:D:153:ASP:HB2	1:D:154:GLU:OE1	2.09	0.53
1:C:157:LEU:HD13	1:C:203:LEU:HD21	1.91	0.53
1:B:327:ALA:O	1:B:328:THR:HB	2.08	0.53
1:C:516:ARG:CG	1:C:516:ARG:HH11	2.20	0.53
1:A:510:ILE:HG23	1:A:525:MET:CE	2.38	0.53
1:B:242:ALA:HB1	1:B:245:ILE:HD11	1.90	0.53
1:C:175:TYR:O	1:C:209:VAL:HA	2.08	0.53
1:A:405:THR:CG2	1:B:422:LYS:HE3	2.38	0.53

Continued on next page...

Continued from previous page...

Atom-1	Atom-2	Distance(Å)	Clash(Å)
1:A:319:ARG:HH21	1:C:31:CYS:CB	2.22	0.53
1:B:409:THR:HG22	1:B:522:THR:HB	1.90	0.53
1:C:119:ILE:HG12	1:C:161:TYR:HB2	1.89	0.53
1:A:92:ARG:O	1:A:96:GLU:HG2	2.08	0.53
1:C:393:GLN:O	1:C:397:GLU:HG3	2.09	0.53
1:A:294:ARG:NH2	1:A:347:ASP:OD1	2.40	0.53
1:D:327:ALA:O	1:D:328:THR:HB	2.07	0.53
1:B:124:ILE:CG2	1:B:132:VAL:HG23	2.37	0.53
1:B:329:GLN:HG2	1:B:332:GLU:HG3	1.91	0.53
1:A:118:GLU:OE2	1:A:120:ARG:NH1	2.37	0.53
1:B:294:ARG:HH22	1:B:347:ASP:CG	2.12	0.53
1:D:295:GLY:CA	1:D:328:THR:HG21	2.39	0.53
1:D:186:LYS:HE2	1:D:186:LYS:HA	1.90	0.53
1:A:134:LEU:HB3	1:A:197:VAL:HG21	1.90	0.53
1:D:26:PHE:O	1:D:29:HIS:HB3	2.09	0.53
1:C:143:THR:HG21	1:C:145:ASP:HB3	1.89	0.53
1:A:175:TYR:O	1:A:209:VAL:HA	2.09	0.52
1:C:134:LEU:CD2	1:C:140:LEU:HD22	2.36	0.52
1:D:243:SER:OG	1:D:270:LYS:HE2	2.09	0.52
1:B:123:LEU:HB2	1:B:150:GLU:HA	1.91	0.52
1:A:341:THR:OG1	1:A:344:GLU:HG3	2.09	0.52
1:C:389:ILE:HD11	1:C:467:ARG:NH2	2.24	0.52
1:A:119:ILE:HG12	1:A:161:TYR:HB2	1.90	0.52
1:D:78:HIS:ND1	7:D:705:GOL:H2	2.24	0.52
1:A:153:ASP:HB2	1:A:154:GLU:OE1	2.10	0.52
1:C:140:LEU:HD21	1:C:157:LEU:HD22	1.91	0.52
1:B:356:ALA:O	1:B:467:ARG:NH1	2.43	0.52
1:D:323:PRO:HA	1:D:357:ASP:OD1	2.09	0.52
1:B:143:THR:HG21	1:B:145:ASP:HB3	1.92	0.52
1:A:26:PHE:O	1:A:29:HIS:HB3	2.10	0.52
1:B:64:MET:HE3	1:B:372:LEU:HD23	1.90	0.52
1:C:327:ALA:O	1:C:328:THR:HB	2.10	0.52
1:D:120:ARG:N	1:D:160:ASP:OD2	2.41	0.51
1:C:186:LYS:HA	1:C:186:LYS:HE2	1.92	0.51
1:C:123:LEU:HB2	1:C:150:GLU:HA	1.91	0.51
1:B:31:CYS:CB	1:D:319:ARG:HH21	2.23	0.51
1:D:389:ILE:HD11	1:D:467:ARG:NH2	2.25	0.51
1:D:175:TYR:O	1:D:209:VAL:HA	2.10	0.51
1:A:243:SER:OG	1:A:270:LYS:HE2	2.11	0.51
1:C:26:PHE:O	1:C:29:HIS:HB3	2.10	0.51
1:C:70:ASN:HD22	1:C:464:HIS:CE1	2.28	0.51
1:C:124:ILE:CG2	1:C:132:VAL:HG23	2.39	0.51

Continued on next page...

Continued from previous page...

Atom-1	Atom-2	Distance(Å)	Clash(Å)
1:C:395:PHE:CZ	1:C:399:ARG:HD3	2.45	0.51
1:D:23:ALA:HB2	1:D:32:ARG:NH1	2.25	0.51
1:C:356:ALA:O	1:C:467:ARG:NH1	2.43	0.51
1:C:463:ALA:HB3	1:C:471:PRO:HG3	1.93	0.51
1:B:26:PHE:O	1:B:29:HIS:HB3	2.10	0.51
1:D:516:ARG:CG	1:D:516:ARG:HH11	2.23	0.51
1:B:103:ILE:HG22	1:B:104:LEU:HD22	1.90	0.51
1:A:64:MET:HE3	1:A:372:LEU:HD23	1.92	0.51
1:C:255:ARG:NH2	1:C:288:ASP:OD1	2.44	0.51
1:A:463:ALA:HB3	1:A:471:PRO:HG3	1.93	0.51
1:C:141:LYS:HE3	1:C:192:PHE:CG	2.46	0.51
1:A:134:LEU:HD12	1:A:134:LEU:N	2.27	0.50
1:B:305:LYS:NZ	8:B:718:HOH:O	2.41	0.50
1:C:372:LEU:O	1:C:376:ARG:HG3	2.11	0.50
1:B:458:GLN:O	1:B:462:GLN:HG3	2.11	0.50
1:D:124:ILE:CG2	1:D:132:VAL:HG23	2.40	0.50
1:B:329:GLN:HA	1:B:332:GLU:HG2	1.94	0.50
1:B:389:ILE:HD11	1:B:467:ARG:NH2	2.26	0.50
1:D:409:THR:HG22	1:D:522:THR:HB	1.93	0.50
1:A:123:LEU:HB2	1:A:150:GLU:HA	1.93	0.50
1:A:333:SER:CB	1:A:344:GLU:OE1	2.55	0.50
1:C:136:LYS:HE2	1:C:198:GLU:O	2.12	0.50
1:B:255:ARG:CG	1:B:255:ARG:HH11	2.25	0.50
1:D:270:LYS:HD2	1:D:291:MET:SD	2.51	0.50
1:B:395:PHE:CZ	1:B:399:ARG:HD3	2.47	0.50
1:A:414:VAL:HG22	1:A:444:TYR:CZ	2.46	0.50
1:C:285:GLU:O	7:C:709:GOL:H32	2.11	0.50
1:B:134:LEU:HB3	1:B:197:VAL:HG21	1.93	0.49
1:C:23:ALA:HB2	1:C:32:ARG:NH1	2.27	0.49
1:A:242:ALA:O	1:A:270:LYS:HG3	2.11	0.49
1:A:143:THR:HG21	1:A:145:ASP:HB3	1.94	0.49
1:A:306:VAL:HB	8:A:719:HOH:O	2.11	0.49
1:D:143:THR:HG21	1:D:145:ASP:HB3	1.93	0.49
1:B:516:ARG:CG	1:B:516:ARG:HH11	2.25	0.49
1:B:323:PRO:HB3	1:B:465:LEU:O	2.12	0.49
1:B:31:CYS:HB3	1:D:319:ARG:HH21	1.77	0.49
1:B:393:GLN:O	1:B:397:GLU:HG3	2.12	0.49
1:A:222:SER:O	1:A:226:ILE:HG13	2.11	0.49
1:A:124:ILE:CG2	1:A:132:VAL:HG23	2.39	0.49
1:D:463:ALA:HB1	1:D:469:ILE:HG21	1.93	0.49
1:A:327:ALA:O	1:A:328:THR:HB	2.12	0.49
1:A:393:GLN:O	1:A:397:GLU:HG3	2.12	0.49

Continued on next page...

Continued from previous page...

Atom-1	Atom-2	Distance(Å)	Clash(Å)
1:B:319:ARG:HH21	1:D:31:CYS:HB3	1.77	0.49
1:B:319:ARG:HH21	1:D:31:CYS:CB	2.25	0.49
1:B:108:VAL:O	1:B:461:ARG:HG2	2.13	0.49
1:D:55:SER:O	1:D:61:LEU:HD13	2.13	0.49
1:A:389:ILE:HD11	1:A:467:ARG:NH2	2.26	0.49
1:C:323:PRO:HB3	1:C:465:LEU:O	2.13	0.49
1:D:253:GLU:O	1:D:257:VAL:HG23	2.13	0.49
1:A:329:GLN:HA	1:A:332:GLU:HG2	1.94	0.48
1:B:64:MET:HE2	1:B:372:LEU:HD23	1.94	0.48
1:A:295:GLY:CA	1:A:328:THR:HG21	2.43	0.48
1:B:119:ILE:HG12	1:B:161:TYR:HB2	1.96	0.48
1:B:55:SER:O	1:B:61:LEU:HD13	2.12	0.48
1:B:341:THR:HB	1:D:329:GLN:OE1	2.13	0.48
1:A:411:ALA:HA	1:B:422:LYS:HG2	1.96	0.48
1:A:526:ARG:HA	1:B:523:ASN:O	2.13	0.48
1:C:141:LYS:HE3	1:C:192:PHE:CD2	2.49	0.48
1:B:510:ILE:HG23	1:B:525:MET:HE2	1.95	0.48
1:B:134:LEU:N	1:B:134:LEU:HD12	2.29	0.48
1:D:341:THR:OG1	1:D:344:GLU:HG3	2.13	0.48
1:D:510:ILE:HG23	1:D:525:MET:CE	2.42	0.48
1:C:329:GLN:HG2	1:C:332:GLU:HG3	1.94	0.48
1:A:121:THR:O	1:A:206:LYS:HA	2.14	0.48
1:C:405:THR:CG2	1:D:422:LYS:HE3	2.43	0.48
1:A:272:GLU:OE2	1:A:296:ASP:OD2	2.30	0.48
1:C:206:LYS:HZ3	7:C:704:GOL:H32	1.78	0.48
1:D:70:ASN:HD22	1:D:464:HIS:CE1	2.32	0.48
1:B:134:LEU:HD23	1:B:197:VAL:HG22	1.96	0.48
1:C:132:VAL:CG1	1:C:133:GLU:N	2.56	0.47
1:D:329:GLN:HA	1:D:332:GLU:HG2	1.95	0.47
1:C:146:ASN:O	1:C:149:MET:HG2	2.14	0.47
1:B:153:ASP:HB2	1:B:154:GLU:OE1	2.13	0.47
1:C:143:THR:HG22	1:C:145:ASP:HB3	1.95	0.47
1:D:255:ARG:NH1	1:D:255:ARG:CG	2.74	0.47
1:D:255:ARG:NH2	1:D:288:ASP:OD1	2.47	0.47
1:B:118:GLU:OE2	1:B:120:ARG:HD2	2.15	0.47
1:D:121:THR:O	1:D:206:LYS:HA	2.14	0.47
1:A:401:LEU:HD12	1:C:27:LEU:HD23	1.96	0.47
1:B:380:LEU:CB	1:D:304:GLU:HG2	2.33	0.47
1:A:422:LYS:HE3	1:B:405:THR:HG22	1.97	0.47
1:C:118:GLU:OE2	1:C:120:ARG:HD2	2.14	0.47
1:A:516:ARG:HG3	1:A:516:ARG:HH11	1.79	0.47
1:A:329:GLN:OE1	1:C:341:THR:HB	2.15	0.47

Continued on next page...

Continued from previous page...

Atom-1	Atom-2	Distance(Å)	Clash(Å)
1:A:272:GLU:HG3	1:A:293:ALA:HB3	1.96	0.47
1:D:123:LEU:O	1:D:152:CYS:HB2	2.15	0.47
1:A:224:LYS:HG2	1:A:228:ASP:OD2	2.14	0.47
1:C:497:GLY:HA3	1:C:503:PHE:CZ	2.49	0.47
1:B:31:CYS:HB3	1:D:319:ARG:NH2	2.30	0.47
1:B:120:ARG:N	1:B:160:ASP:OD2	2.46	0.47
1:A:216:VAL:HG23	1:A:216:VAL:O	2.14	0.47
1:D:134:LEU:N	1:D:134:LEU:HD12	2.30	0.47
1:A:168:VAL:CG2	1:A:185:VAL:HG21	2.44	0.47
1:C:272:GLU:CG	1:C:293:ALA:HB3	2.44	0.47
1:B:118:GLU:OE2	1:B:120:ARG:NH1	2.40	0.47
1:C:458:GLN:O	1:C:462:GLN:HG3	2.14	0.47
1:D:343:ALA:HB3	8:D:728:HOH:O	2.13	0.47
1:B:23:ALA:HB2	1:B:32:ARG:NH1	2.30	0.47
1:C:44:ASN:OD1	1:C:468:GLY:HA2	2.15	0.47
1:B:516:ARG:NH1	1:B:517:PRO:O	2.48	0.47
1:C:16:GLN:OE1	1:C:447:ARG:HD2	2.15	0.47
1:B:121:THR:O	1:B:206:LYS:HA	2.15	0.47
1:D:123:LEU:HB2	1:D:150:GLU:HA	1.95	0.47
1:D:50:THR:HA	1:D:73:ARG:HB3	1.96	0.47
1:B:497:GLY:HA3	1:B:503:PHE:CZ	2.50	0.47
1:C:300:GLU:OE2	7:C:706:GOL:H11	2.15	0.47
1:C:134:LEU:HD12	1:C:134:LEU:N	2.30	0.46
1:A:48:ILE:HG12	1:A:71:VAL:HB	1.98	0.46
1:C:457:PRO:HB3	1:C:473:LEU:HD21	1.97	0.46
1:D:71:VAL:HG22	1:D:109:ALA:HB3	1.97	0.46
1:C:510:ILE:HG23	1:C:525:MET:CE	2.45	0.46
1:A:255:ARG:CG	1:A:255:ARG:NH1	2.76	0.46
1:B:74:LEU:HD11	1:B:88:ILE:HG12	1.96	0.46
1:B:323:PRO:HA	1:B:357:ASP:OD1	2.15	0.46
1:D:333:SER:CB	1:D:344:GLU:OE1	2.60	0.46
1:C:329:GLN:HA	1:C:332:GLU:HG2	1.96	0.46
1:C:295:GLY:CA	1:C:328:THR:HG21	2.46	0.46
1:A:523:ASN:O	1:B:526:ARG:HA	2.15	0.46
1:D:405:THR:HG23	8:D:725:HOH:O	2.16	0.46
1:A:482:TRP:CE2	1:A:517:PRO:HG3	2.49	0.46
1:B:293:ALA:HB1	3:B:533:OXL:C2	2.46	0.46
1:D:516:ARG:NH1	1:D:517:PRO:O	2.49	0.46
1:C:55:SER:O	1:C:61:LEU:HD13	2.15	0.46
1:C:242:ALA:O	1:C:270:LYS:HG3	2.16	0.46
1:A:70:ASN:HD22	1:A:464:HIS:CE1	2.33	0.46
1:C:445:ARG:HH22	7:C:707:GOL:C1	2.19	0.45

Continued on next page...

Continued from previous page...

Atom-1	Atom-2	Distance(Å)	Clash(Å)
1:B:123:LEU:O	1:B:152:CYS:HB2	2.16	0.45
1:C:323:PRO:HA	1:C:357:ASP:OD1	2.16	0.45
1:C:333:SER:HB2	1:C:341:THR:HG23	1.97	0.45
1:C:422:LYS:HG2	1:D:411:ALA:HA	1.98	0.45
1:A:120:ARG:N	1:A:160:ASP:OD2	2.45	0.45
1:D:106:ARG:HG2	8:D:721:HOH:O	2.14	0.45
1:B:273:ASN:O	1:B:277:VAL:HG23	2.17	0.45
1:B:333:SER:HB2	1:B:341:THR:HG23	1.99	0.45
1:C:134:LEU:HB3	1:C:197:VAL:HG21	1.97	0.45
1:D:168:VAL:CG2	1:D:185:VAL:HG21	2.46	0.45
1:D:48:ILE:HG12	1:D:71:VAL:HB	1.99	0.45
1:C:224:LYS:HG2	1:C:228:ASP:OD2	2.16	0.45
1:C:49:CYS:SG	1:C:375:VAL:HG22	2.56	0.45
1:C:205:SER:O	1:C:206:LYS:C	2.54	0.45
1:C:414:VAL:HG22	1:C:444:TYR:CZ	2.51	0.45
1:D:272:GLU:HG3	1:D:293:ALA:HB3	1.99	0.45
1:C:153:ASP:HB2	1:C:154:GLU:OE1	2.16	0.45
1:C:255:ARG:CG	1:C:255:ARG:NH1	2.79	0.45
1:A:327:ALA:HB1	1:A:360:MET:CE	2.45	0.45
1:A:516:ARG:NH1	1:A:516:ARG:HG3	2.31	0.45
1:D:417:VAL:HG21	1:D:444:TYR:HB2	1.98	0.45
1:A:55:SER:O	1:A:61:LEU:HD13	2.17	0.45
1:A:132:VAL:CG1	1:A:133:GLU:N	2.61	0.45
1:C:127:SER:HB3	1:C:130:ALA:CB	2.43	0.45
1:C:120:ARG:N	1:C:160:ASP:OD2	2.48	0.45
1:A:216:VAL:HG21	7:A:704:GOL:O2	2.17	0.45
1:A:409:THR:HG22	1:A:522:THR:HB	1.97	0.45
1:A:21:ALA:HB2	8:A:728:HOH:O	2.16	0.45
1:D:272:GLU:OE2	1:D:296:ASP:OD2	2.35	0.45
1:C:216:VAL:O	1:C:216:VAL:HG23	2.16	0.45
1:C:318:ASN:HA	7:C:707:GOL:H11	1.99	0.44
1:A:301:ILE:HB	1:A:302:PRO:HD2	1.99	0.44
1:A:319:ARG:NH2	1:C:31:CYS:HB3	2.31	0.44
1:D:458:GLN:O	1:D:462:GLN:HG3	2.17	0.44
1:B:168:VAL:CG2	1:B:185:VAL:HG21	2.48	0.44
1:D:168:VAL:HG21	1:D:185:VAL:HG21	2.00	0.44
1:A:34:ASP:HB3	1:A:37:SER:HB2	1.99	0.44
1:B:50:THR:HA	1:B:73:ARG:HB3	1.99	0.44
1:A:356:ALA:O	1:A:467:ARG:NH1	2.50	0.44
1:D:414:VAL:HG22	1:D:444:TYR:CZ	2.52	0.44
1:B:224:LYS:HG2	1:B:228:ASP:OD2	2.17	0.44
1:D:157:LEU:CD1	1:D:203:LEU:HD21	2.47	0.44

Continued on next page...

Continued from previous page...

Atom-1	Atom-2	Distance(Å)	Clash(Å)
1:A:50:THR:HA	1:A:73:ARG:HB3	2.00	0.44
1:B:407:ASP:C	1:B:407:ASP:OD2	2.56	0.44
1:A:136:LYS:HE2	1:A:198:GLU:O	2.17	0.44
1:A:16:GLN:OE1	1:A:447:ARG:HD2	2.18	0.44
1:B:279:ARG:O	1:B:283:ILE:HG13	2.17	0.44
1:A:134:LEU:HD23	1:A:197:VAL:HG22	1.99	0.44
1:B:123:LEU:HD23	1:B:205:SER:HB3	2.00	0.44
1:C:123:LEU:HD23	1:C:205:SER:HB3	2.00	0.44
1:A:458:GLN:O	1:A:462:GLN:HG3	2.17	0.44
1:C:409:THR:HG22	1:C:522:THR:HB	2.00	0.44
1:D:159:LEU:HD22	1:D:209:VAL:HG21	2.00	0.44
1:B:255:ARG:NH2	1:B:288:ASP:OD1	2.51	0.44
1:A:168:VAL:HG21	1:A:185:VAL:HG21	1.99	0.43
1:A:270:LYS:HD2	1:A:291:MET:SD	2.58	0.43
1:D:272:GLU:CG	1:D:293:ALA:HB3	2.48	0.43
1:D:112:LEU:HD23	1:D:112:LEU:C	2.38	0.43
1:A:157:LEU:CD1	1:A:203:LEU:HD21	2.48	0.43
1:C:242:ALA:HB1	1:C:245:ILE:HD11	1.99	0.43
1:B:334:MET:HA	1:B:337:LYS:O	2.18	0.43
1:D:305:LYS:NZ	8:D:736:HOH:O	2.51	0.43
1:B:414:VAL:HG22	1:B:444:TYR:CZ	2.53	0.43
1:A:158:TRP:O	1:A:159:LEU:HD23	2.18	0.43
1:A:450:ILE:HB	1:A:469:ILE:HA	2.00	0.43
1:C:272:GLU:HG3	1:C:293:ALA:HB3	2.00	0.43
1:C:270:LYS:NZ	3:C:533:OXL:O3	2.45	0.43
1:D:120:ARG:NH2	4:D:534:PO4:O2	2.38	0.43
1:C:417:VAL:HG21	1:C:444:TYR:HB2	2.00	0.43
1:A:211:LEU:O	1:A:214:ALA:HB3	2.19	0.43
1:D:333:SER:HB2	1:D:341:THR:HG23	1.99	0.43
1:B:148:TYR:CD2	1:B:151:LYS:HD2	2.52	0.43
1:A:273:ASN:O	1:A:277:VAL:HG23	2.19	0.43
1:D:148:TYR:CD2	1:D:151:LYS:HD2	2.52	0.43
1:D:78:HIS:O	1:D:84:HIS:HE1	2.02	0.43
1:C:48:ILE:HG12	1:C:71:VAL:HB	2.01	0.43
1:B:157:LEU:CD1	1:B:203:LEU:HD21	2.48	0.43
1:C:243:SER:OG	1:C:270:LYS:CE	2.65	0.43
1:A:372:LEU:O	1:A:376:ARG:HG3	2.19	0.43
1:C:285:GLU:O	7:C:709:GOL:C3	2.66	0.43
1:D:246:ARG:HG3	1:D:246:ARG:HH11	1.84	0.43
1:B:459:THR:HG22	8:B:720:HOH:O	2.19	0.43
1:B:248:ALA:HB2	1:B:282:GLU:CG	2.36	0.43
1:C:272:GLU:OE2	1:C:296:ASP:OD2	2.37	0.43

Continued on next page...

Continued from previous page...

Atom-1	Atom-2	Distance(Å)	Clash(Å)
1:B:272:GLU:HG3	1:B:293:ALA:HB3	2.00	0.43
1:A:31:CYS:CB	1:C:319:ARG:HH21	2.32	0.43
1:C:50:THR:HA	1:C:73:ARG:HB3	2.01	0.43
1:D:136:LYS:HE2	1:D:198:GLU:O	2.18	0.42
1:D:270:LYS:NZ	3:D:533:OXL:O4	2.42	0.42
1:B:401:LEU:HD12	1:D:27:LEU:HD23	2.00	0.42
1:D:412:THR:OG1	1:D:523:ASN:HA	2.18	0.42
1:A:102:PRO:HA	8:A:712:HOH:O	2.18	0.42
1:B:450:ILE:HB	1:B:469:ILE:HA	2.00	0.42
1:A:427:ALA:O	1:A:509:VAL:HG13	2.19	0.42
1:C:400:ARG:NH1	8:C:728:HOH:O	2.50	0.42
1:B:298:GLY:HA3	1:D:342:ARG:NE	2.34	0.42
1:A:371:PRO:HG2	1:A:372:LEU:H	1.85	0.42
1:D:177:ASP:OD1	1:D:207:LYS:HD2	2.19	0.42
1:B:270:LYS:HD2	1:B:291:MET:SD	2.59	0.42
1:B:395:PHE:O	1:B:399:ARG:HG3	2.18	0.42
1:A:168:VAL:HG11	1:A:193:LEU:HD11	2.01	0.42
1:A:509:VAL:HG12	1:A:510:ILE:N	2.35	0.42
1:D:149:MET:HG3	1:D:150:GLU:HG3	2.01	0.42
1:B:168:VAL:HG21	1:B:185:VAL:HG21	2.01	0.42
1:C:390:TYR:CE2	1:C:393:GLN:HB2	2.54	0.42
1:A:205:SER:O	1:A:206:LYS:C	2.57	0.42
1:A:272:GLU:CG	1:A:293:ALA:HB3	2.49	0.42
1:A:57:SER:O	1:A:58:VAL:C	2.58	0.42
1:C:273:ASN:HA	1:C:300:GLU:HG2	2.02	0.42
1:D:132:VAL:HG11	1:D:154:GLU:CA	2.50	0.42
1:A:418:GLU:OE1	1:B:399:ARG:NH1	2.53	0.42
1:A:23:ALA:HB2	1:A:32:ARG:NH1	2.34	0.42
1:D:243:SER:HA	1:D:270:LYS:HE2	2.00	0.42
1:D:118:GLU:OE2	1:D:120:ARG:HD2	2.19	0.42
1:B:319:ARG:NH2	1:D:31:CYS:HB3	2.35	0.42
1:B:510:ILE:HG23	1:B:525:MET:CE	2.49	0.42
1:C:341:THR:OG1	1:C:344:GLU:HG3	2.20	0.42
1:A:175:TYR:CE2	1:A:212:PRO:HG2	2.55	0.42
1:D:205:SER:O	1:D:206:LYS:C	2.56	0.42
1:C:273:ASN:O	1:C:277:VAL:HG23	2.20	0.42
1:A:31:CYS:HB3	1:C:319:ARG:HH21	1.85	0.42
1:C:463:ALA:HB1	1:C:469:ILE:HG21	2.02	0.41
1:B:272:GLU:OE2	1:B:296:ASP:OD2	2.37	0.41
1:A:74:LEU:HD11	1:A:88:ILE:HG12	2.02	0.41
1:D:472:VAL:HG21	1:D:496:VAL:HG11	2.01	0.41
1:A:266:LYS:HD3	1:A:266:LYS:HA	1.88	0.41

Continued on next page...

Continued from previous page...

Atom-1	Atom-2	Distance(Å)	Clash(Å)
1:B:297:LEU:O	1:B:301:ILE:HG12	2.20	0.41
1:D:134:LEU:HD23	1:D:197:VAL:HG22	2.02	0.41
1:C:168:VAL:HG21	1:C:185:VAL:HG21	2.02	0.41
1:B:242:ALA:O	1:B:270:LYS:HG3	2.20	0.41
1:A:123:LEU:HD23	1:A:205:SER:HB3	2.01	0.41
1:A:149:MET:HG3	1:A:150:GLU:HG3	2.03	0.41
1:A:391:HIS:HB2	8:A:723:HOH:O	2.21	0.41
1:A:280:PHE:CD1	1:A:313:MET:HG2	2.55	0.41
1:D:472:VAL:CG2	1:D:496:VAL:HG11	2.50	0.41
1:B:246:ARG:HG3	1:B:246:ARG:HH11	1.85	0.41
1:A:323:PRO:HA	1:A:357:ASP:OD1	2.20	0.41
1:A:288:ASP:O	1:A:323:PRO:HD2	2.19	0.41
1:B:132:VAL:HG11	1:B:154:GLU:CA	2.50	0.41
1:B:205:SER:O	1:B:206:LYS:C	2.58	0.41
1:A:417:VAL:HG21	1:A:444:TYR:HB2	2.03	0.41
1:A:118:GLU:OE2	1:A:120:ARG:HD2	2.20	0.41
1:C:148:TYR:CD2	1:C:151:LYS:HD2	2.53	0.41
1:D:407:ASP:C	1:D:407:ASP:OD2	2.59	0.41
1:C:57:SER:OG	8:C:737:HOH:O	2.22	0.41
1:A:132:VAL:HG11	1:A:154:GLU:CA	2.49	0.41
1:C:445:ARG:NH2	7:C:707:GOL:H12	2.23	0.41
1:C:296:ASP:OD2	3:C:533:OXL:O2	2.39	0.41
1:D:242:ALA:O	1:D:270:LYS:HG3	2.21	0.41
1:A:509:VAL:CG1	1:A:510:ILE:N	2.84	0.41
1:C:390:TYR:CD2	1:C:393:GLN:HB3	2.56	0.41
1:D:273:ASN:O	1:D:277:VAL:HG23	2.21	0.41
1:C:334:MET:HA	1:C:337:LYS:O	2.21	0.41
1:C:502:PHE:CD1	1:C:502:PHE:N	2.89	0.41
1:A:333:SER:HB2	1:A:341:THR:HG23	2.03	0.41
1:B:57:SER:O	1:B:58:VAL:C	2.59	0.41
1:D:301:ILE:HB	1:D:302:PRO:HD2	2.03	0.41
1:D:123:LEU:HD23	1:D:205:SER:HB3	2.03	0.41
1:B:505:LYS:O	1:B:530:VAL:HB	2.21	0.41
1:C:132:VAL:HG11	1:C:154:GLU:CA	2.50	0.40
1:B:409:THR:HG21	8:B:711:HOH:O	2.21	0.40
1:B:272:GLU:CG	1:B:293:ALA:HB3	2.51	0.40
1:D:307:PHE:HA	8:D:722:HOH:O	2.20	0.40
1:C:412:THR:OG1	1:C:523:ASN:HA	2.21	0.40
1:A:127:SER:HB3	1:A:130:ALA:CB	2.42	0.40
1:C:134:LEU:HD23	1:C:197:VAL:HG22	2.03	0.40
1:C:168:VAL:CG2	1:C:185:VAL:HG21	2.51	0.40
1:D:78:HIS:O	1:D:84:HIS:CE1	2.74	0.40

Continued on next page...

Continued from previous page...

Atom-1	Atom-2	Distance(Å)	Clash(Å)
1:A:20:ALA:C	1:A:29:HIS:HD1	2.25	0.40
1:D:168:VAL:HG11	1:D:193:LEU:HD11	2.02	0.40
1:C:472:VAL:CG2	1:C:496:VAL:HG11	2.52	0.40
1:C:427:ALA:HA	1:C:448:ALA:HB1	2.02	0.40
1:D:136:LYS:HE3	1:D:136:LYS:HB2	1.89	0.40
1:D:505:LYS:O	1:D:530:VAL:HB	2.21	0.40
1:B:168:VAL:HG11	1:B:193:LEU:HD11	2.04	0.40
1:B:146:ASN:O	1:B:149:MET:HG2	2.22	0.40

There are no symmetry-related clashes.

5.3 Torsion angles

5.3.1 Protein backbone ⓘ

In the following table, the Percentiles column shows the percent Ramachandran outliers of the chain as a percentile score with respect to all X-ray entries followed by that with respect to entries of similar resolution. The Analysed column shows the number of residues for which the backbone conformation was analysed, and the total number of residues.

Mol	Chain	Analysed	Favoured	Allowed	Outliers	Percentiles	
1	A	517/567 (91%)	479 (93%)	28 (5%)	10 (2%)	12	37
1	B	517/567 (91%)	477 (92%)	30 (6%)	10 (2%)	12	37
1	C	517/567 (91%)	482 (93%)	24 (5%)	11 (2%)	11	33
1	D	517/567 (91%)	479 (93%)	27 (5%)	11 (2%)	11	33
All	All	2068/2268 (91%)	1917 (93%)	109 (5%)	42 (2%)	11	35

All (42) Ramachandran outliers are listed below:

Mol	Chain	Res	Type
1	A	154	GLU
1	B	154	GLU
1	C	154	GLU
1	D	154	GLU
1	A	125	LYS
1	A	132	VAL
1	A	523	ASN
1	B	125	LYS
1	B	132	VAL
1	B	523	ASN

Continued on next page...

Continued from previous page...

Mol	Chain	Res	Type
1	C	125	LYS
1	C	259	GLY
1	C	523	ASN
1	D	125	LYS
1	D	132	VAL
1	D	523	ASN
1	A	179	GLY
1	A	206	LYS
1	A	507	ASP
1	B	206	LYS
1	B	259	GLY
1	C	132	VAL
1	C	146	ASN
1	C	206	LYS
1	C	507	ASP
1	D	206	LYS
1	D	507	ASP
1	A	259	GLY
1	B	146	ASN
1	B	507	ASP
1	D	259	GLY
1	A	14	GLN
1	A	328	THR
1	B	14	GLN
1	C	14	GLN
1	D	14	GLN
1	D	146	ASN
1	D	328	THR
1	B	328	THR
1	C	328	THR
1	C	179	GLY
1	D	179	GLY

5.3.2 Protein sidechains ⓘ

In the following table, the Percentiles column shows the percent sidechain outliers of the chain as a percentile score with respect to all X-ray entries followed by that with respect to entries of similar resolution. The Analysed column shows the number of residues for which the sidechain conformation was analysed, and the total number of residues.

Mol	Chain	Analysed	Rotameric	Outliers	Percentiles
1	A	427/466 (92%)	418 (98%)	9 (2%)	66 93

Continued on next page...

Continued from previous page...

Mol	Chain	Analysed	Rotameric	Outliers	Percentiles	
1	B	427/466 (92%)	420 (98%)	7 (2%)	75	96
1	C	427/466 (92%)	419 (98%)	8 (2%)	69	94
1	D	427/466 (92%)	418 (98%)	9 (2%)	66	93
All	All	1708/1864 (92%)	1675 (98%)	33 (2%)	69	94

All (33) residues with a non-rotameric sidechain are listed below:

Mol	Chain	Res	Type
1	A	25	THR
1	A	26	PHE
1	A	92	ARG
1	A	199	ASN
1	A	255	ARG
1	A	304	GLU
1	A	472	VAL
1	A	516	ARG
1	A	525	MET
1	B	26	PHE
1	B	199	ASN
1	B	255	ARG
1	B	304	GLU
1	B	472	VAL
1	B	516	ARG
1	B	525	MET
1	C	26	PHE
1	C	156	ILE
1	C	199	ASN
1	C	255	ARG
1	C	304	GLU
1	C	472	VAL
1	C	516	ARG
1	C	525	MET
1	D	26	PHE
1	D	199	ASN
1	D	247	LYS
1	D	255	ARG
1	D	294	ARG
1	D	304	GLU
1	D	472	VAL
1	D	516	ARG
1	D	525	MET

Some sidechains can be flipped to improve hydrogen bonding and reduce clashes. All (17) such sidechains are listed below:

Mol	Chain	Res	Type
1	A	84	HIS
1	A	90	ASN
1	A	393	GLN
1	A	439	HIS
1	A	464	HIS
1	B	14	GLN
1	B	90	ASN
1	B	393	GLN
1	C	14	GLN
1	C	70	ASN
1	C	84	HIS
1	C	90	ASN
1	C	393	GLN
1	C	439	HIS
1	D	84	HIS
1	D	90	ASN
1	D	393	GLN

5.3.3 RNA ⓘ

There are no RNA chains in this entry.

5.4 Non-standard residues in protein, DNA, RNA chains ⓘ

There are no non-standard protein/DNA/RNA residues in this entry.

5.5 Carbohydrates ⓘ

There are no carbohydrates in this entry.

5.6 Ligand geometry ⓘ

Of 40 ligands modelled in this entry, 8 are monoatomic - leaving 32 for Mogul analysis.

In the following table, the Counts columns list the number of bonds (or angles) for which Mogul statistics could be retrieved, the number of bonds (or angles) that are observed in the model and the number of bonds (or angles) that are defined in the chemical component dictionary. The Link column lists molecule types, if any, to which the group is linked. The Z score for a bond length (or angle) is the number of standard deviations the observed value is removed from the expected

value. A bond length (or angle) with $|Z| > 2$ is considered an outlier worth inspection. RMSZ is the root-mean-square of all Z scores of the bond lengths (or angles).

Mol	Type	Chain	Res	Link	Bond lengths			Bond angles		
					Counts	RMSZ	$\# Z > 2$	Counts	RMSZ	$\# Z > 2$
2	FBP	A	532	-	20,20,20	1.43	4 (20%)	32,32,32	1.08	1 (3%)
3	OXL	A	533	5	0,5,5	0.00	-	0,6,6	0.00	-
4	PO4	A	534	-	4,4,4	1.39	1 (25%)	6,6,6	0.34	0
7	GOL	A	702	-	5,5,5	0.51	0	5,5,5	0.24	0
7	GOL	A	703	-	5,5,5	0.68	0	5,5,5	0.21	0
7	GOL	A	704	-	5,5,5	0.72	0	5,5,5	0.45	0
7	GOL	A	705	-	5,5,5	0.71	0	5,5,5	0.22	0
7	GOL	A	706	-	5,5,5	0.86	0	5,5,5	0.48	0
2	FBP	B	532	-	20,20,20	1.50	4 (20%)	32,32,32	1.00	1 (3%)
3	OXL	B	533	5	0,5,5	0.00	-	0,6,6	0.00	-
4	PO4	B	534	-	4,4,4	1.53	1 (25%)	6,6,6	0.33	0
7	GOL	B	703	-	5,5,5	0.54	0	5,5,5	0.33	0
7	GOL	B	704	-	5,5,5	0.83	0	5,5,5	0.27	0
7	GOL	B	705	-	5,5,5	0.71	0	5,5,5	0.33	0
7	GOL	B	706	-	5,5,5	0.90	0	5,5,5	0.20	0
2	FBP	C	532	-	20,20,20	1.57	5 (25%)	32,32,32	0.99	2 (6%)
3	OXL	C	533	5	0,5,5	0.00	-	0,6,6	0.00	-
4	PO4	C	534	-	4,4,4	1.04	0	6,6,6	0.35	0
7	GOL	C	704	-	5,5,5	0.67	0	5,5,5	0.31	0
7	GOL	C	705	-	5,5,5	0.85	0	5,5,5	0.33	0
7	GOL	C	706	-	5,5,5	0.34	0	5,5,5	0.51	0
7	GOL	C	707	-	5,5,5	0.55	0	5,5,5	0.38	0
7	GOL	C	708	-	5,5,5	0.70	0	5,5,5	0.23	0
7	GOL	C	709	-	5,5,5	0.63	0	5,5,5	0.31	0
2	FBP	D	532	-	20,20,20	1.42	3 (15%)	32,32,32	1.05	1 (3%)
3	OXL	D	533	5	0,5,5	0.00	-	0,6,6	0.00	-
4	PO4	D	534	-	4,4,4	1.43	0	6,6,6	0.33	0
7	GOL	D	705	-	5,5,5	0.68	0	5,5,5	0.29	0
7	GOL	D	706	-	5,5,5	1.04	0	5,5,5	0.45	0
7	GOL	D	707	-	5,5,5	0.51	0	5,5,5	0.26	0
7	GOL	D	708	-	5,5,5	0.93	0	5,5,5	0.42	0
7	GOL	D	709	-	5,5,5	1.06	0	5,5,5	0.38	0

In the following table, the Chirals column lists the number of chiral outliers, the number of chiral centers analysed, the number of these observed in the model and the number defined in the chemical component dictionary. Similar counts are reported in the Torsion and Rings columns. '-' means no outliers of that kind were identified.

Mol	Type	Chain	Res	Link	Chirals	Torsions	Rings
2	FBP	A	532	-	-	0/13/32/32	0/1/1/1
3	OXL	A	533	5	-	0/0/4/4	0/0/0/0
4	PO4	A	534	-	-	0/0/0/0	0/0/0/0
7	GOL	A	702	-	-	0/4/4/4	0/0/0/0
7	GOL	A	703	-	-	0/4/4/4	0/0/0/0
7	GOL	A	704	-	-	0/4/4/4	0/0/0/0
7	GOL	A	705	-	-	0/4/4/4	0/0/0/0
7	GOL	A	706	-	-	0/4/4/4	0/0/0/0
2	FBP	B	532	-	-	0/13/32/32	0/1/1/1
3	OXL	B	533	5	-	0/0/4/4	0/0/0/0
4	PO4	B	534	-	-	0/0/0/0	0/0/0/0
7	GOL	B	703	-	-	0/4/4/4	0/0/0/0
7	GOL	B	704	-	-	0/4/4/4	0/0/0/0
7	GOL	B	705	-	-	0/4/4/4	0/0/0/0
7	GOL	B	706	-	-	0/4/4/4	0/0/0/0
2	FBP	C	532	-	-	0/13/32/32	0/1/1/1
3	OXL	C	533	5	-	0/0/4/4	0/0/0/0
4	PO4	C	534	-	-	0/0/0/0	0/0/0/0
7	GOL	C	704	-	-	0/4/4/4	0/0/0/0
7	GOL	C	705	-	-	0/4/4/4	0/0/0/0
7	GOL	C	706	-	-	0/4/4/4	0/0/0/0
7	GOL	C	707	-	-	0/4/4/4	0/0/0/0
7	GOL	C	708	-	-	0/4/4/4	0/0/0/0
7	GOL	C	709	-	-	0/4/4/4	0/0/0/0
2	FBP	D	532	-	-	0/13/32/32	0/1/1/1
3	OXL	D	533	5	-	0/0/4/4	0/0/0/0
4	PO4	D	534	-	-	0/0/0/0	0/0/0/0
7	GOL	D	705	-	-	0/4/4/4	0/0/0/0
7	GOL	D	706	-	-	0/4/4/4	0/0/0/0
7	GOL	D	707	-	-	0/4/4/4	0/0/0/0
7	GOL	D	708	-	-	0/4/4/4	0/0/0/0
7	GOL	D	709	-	-	0/4/4/4	0/0/0/0

All (18) bond length outliers are listed below:

Mol	Chain	Res	Type	Atoms	Z	Observed(Å)	Ideal(Å)
2	B	532	FBP	P1-O3P	-3.74	1.41	1.54
2	A	532	FBP	P1-O3P	-3.48	1.42	1.54
2	C	532	FBP	P1-O3P	-3.36	1.42	1.54
2	D	532	FBP	P1-O3P	-3.28	1.42	1.54
2	C	532	FBP	O2-C2	3.21	1.46	1.41
2	B	532	FBP	O5-C2	2.92	1.47	1.43
2	D	532	FBP	O5-C2	2.71	1.47	1.43

Continued on next page...

Continued from previous page...

Mol	Chain	Res	Type	Atoms	Z	Observed(Å)	Ideal(Å)
2	B	532	FBP	P1-O2P	-2.55	1.45	1.54
2	A	532	FBP	P2-O5P	-2.51	1.45	1.54
2	C	532	FBP	O5-C2	2.48	1.47	1.43
2	D	532	FBP	P2-O5P	-2.44	1.45	1.54
2	C	532	FBP	C1-C2	2.35	1.55	1.52
2	A	532	FBP	P1-O2P	-2.14	1.46	1.54
2	A	532	FBP	O5-C2	2.08	1.46	1.43
4	B	534	PO4	P-O3	2.08	1.61	1.52
2	C	532	FBP	O3-C3	-2.07	1.38	1.42
2	B	532	FBP	P2-O5P	-2.07	1.47	1.54
4	A	534	PO4	P-O3	2.06	1.61	1.52

All (5) bond angle outliers are listed below:

Mol	Chain	Res	Type	Atoms	Z	Observed(°)	Ideal(°)
2	A	532	FBP	C1-C2-C3	-3.02	109.97	115.80
2	D	532	FBP	C1-C2-C3	-2.84	110.31	115.80
2	C	532	FBP	C1-C2-C3	-2.26	111.44	115.80
2	C	532	FBP	O3-C3-C2	2.21	116.02	111.43
2	B	532	FBP	O2-C2-O5	2.09	113.82	109.47

There are no chirality outliers.

There are no torsion outliers.

There are no ring outliers.

5.7 Other polymers ⓘ

There are no such residues in this entry.

5.8 Polymer linkage issues

There are no chain breaks in this entry.

6 Fit of model and data ⓘ

6.1 Protein, DNA and RNA chains ⓘ

In the following table, the column labelled ‘#RSRZ> 2’ contains the number (and percentage) of RSRZ outliers, followed by percent RSRZ outliers for the chain as percentile scores relative to all X-ray entries and entries of similar resolution. The OWAB column contains the minimum, median, 95th percentile and maximum values of the occupancy-weighted average B-factor per residue. The column labelled ‘Q< 0.9’ lists the number of (and percentage) of residues with an average occupancy less than 0.9.

Mol	Chain	Analysed	<RSRZ>	#RSRZ>2		OWAB(Å ²)	Q<0.9
1	A	519/567 (91%)	0.10	35 (6%)	17 16	23, 60, 99, 99	0
1	B	519/567 (91%)	0.20	40 (7%)	13 12	29, 65, 99, 99	0
1	C	519/567 (91%)	-0.06	9 (1%)	67 68	26, 65, 97, 99	0
1	D	519/567 (91%)	0.19	38 (7%)	15 13	34, 69, 99, 99	0
All	All	2076/2268 (91%)	0.11	122 (5%)	22 21	23, 65, 99, 99	0

All (122) RSRZ outliers are listed below:

Mol	Chain	Res	Type	RSRZ
1	A	13	ILE	6.3
1	A	190	ALA	6.2
1	A	142	ILE	5.9
1	D	168	VAL	5.6
1	D	140	LEU	5.4
1	D	200	GLY	5.4
1	B	13	ILE	5.3
1	A	134	LEU	5.3
1	B	157	LEU	5.2
1	B	168	VAL	5.0
1	C	13	ILE	5.0
1	A	157	LEU	4.9
1	B	148	TYR	4.9
1	A	203	LEU	4.8
1	D	125	LYS	4.8
1	D	14	GLN	4.8
1	B	125	LYS	4.7
1	A	159	LEU	4.5
1	D	195	THR	4.5
1	D	126	GLY	4.5
1	B	165	CYS	4.4

Continued on next page...

Continued from previous page...

Mol	Chain	Res	Type	RSRZ
1	B	185	VAL	4.3
1	D	164	ILE	4.3
1	D	13	ILE	4.3
1	B	159	LEU	4.2
1	B	192	PHE	4.1
1	D	187	GLN	4.0
1	D	142	ILE	4.0
1	A	14	GLN	3.9
1	B	124	ILE	3.9
1	B	164	ILE	3.9
1	A	167	VAL	3.8
1	D	139	THR	3.8
1	B	140	LEU	3.8
1	B	195	THR	3.8
1	A	132	VAL	3.7
1	C	127	SER	3.7
1	B	193	LEU	3.7
1	B	194	VAL	3.7
1	A	156	ILE	3.7
1	D	165	CYS	3.6
1	D	190	ALA	3.5
1	A	125	LYS	3.4
1	A	168	VAL	3.4
1	C	15	THR	3.4
1	B	141	LYS	3.4
1	A	140	LEU	3.3
1	D	134	LEU	3.3
1	A	151	LYS	3.3
1	A	195	THR	3.2
1	B	167	VAL	3.2
1	D	157	LEU	3.2
1	D	167	VAL	3.2
1	A	165	CYS	3.2
1	B	151	LYS	3.2
1	D	201	GLY	3.2
1	C	91	VAL	3.1
1	B	156	ILE	3.1
1	B	14	GLN	3.1
1	C	14	GLN	3.1
1	A	183	LEU	3.1
1	A	193	LEU	3.0
1	D	136	LYS	3.0

Continued on next page...

Continued from previous page...

Mol	Chain	Res	Type	RSRZ
1	B	15	THR	2.9
1	D	202	SER	2.9
1	B	203	LEU	2.9
1	B	142	ILE	2.9
1	A	191	ASP	2.8
1	B	169	GLU	2.8
1	B	216	VAL	2.8
1	D	480	GLU	2.8
1	A	127	SER	2.8
1	C	128	GLY	2.7
1	D	166	LYS	2.7
1	B	129	THR	2.7
1	A	124	ILE	2.7
1	D	193	LEU	2.7
1	D	215	ALA	2.7
1	A	187	GLN	2.7
1	D	180	LEU	2.7
1	B	122	GLY	2.6
1	B	126	GLY	2.6
1	A	174	ILE	2.5
1	B	214	ALA	2.5
1	B	204	GLY	2.5
1	A	139	THR	2.5
1	D	189	GLY	2.5
1	B	174	ILE	2.5
1	C	531	PRO	2.4
1	B	136	LYS	2.4
1	C	126	GLY	2.4
1	D	123	LEU	2.4
1	A	137	GLY	2.4
1	D	124	ILE	2.4
1	A	144	LEU	2.4
1	A	16	GLN	2.4
1	D	15	THR	2.4
1	B	158	TRP	2.3
1	D	512	LEU	2.3
1	D	138	ALA	2.3
1	D	127	SER	2.3
1	A	176	VAL	2.2
1	A	194	VAL	2.2
1	B	139	THR	2.2
1	A	180	LEU	2.2

Continued on next page...

Continued from previous page...

Mol	Chain	Res	Type	RSRZ
1	D	203	LEU	2.2
1	B	160	ASP	2.2
1	B	154	GLU	2.2
1	A	188	LYS	2.1
1	D	128	GLY	2.1
1	D	192	PHE	2.1
1	A	15	THR	2.1
1	B	149	MET	2.1
1	B	16	GLN	2.1
1	D	185	VAL	2.1
1	D	162	LYS	2.1
1	D	211	LEU	2.0
1	A	158	TRP	2.0
1	B	127	SER	2.0
1	B	191	ASP	2.0
1	A	221	VAL	2.0
1	C	18	LEU	2.0

6.2 Non-standard residues in protein, DNA, RNA chains ⓘ

There are no non-standard protein/DNA/RNA residues in this entry.

6.3 Carbohydrates ⓘ

There are no carbohydrates in this entry.

6.4 Ligands ⓘ

In the following table, the Atoms column lists the number of modelled atoms in the group and the number defined in the chemical component dictionary. LLDF column lists the quality of electron density of the group with respect to its neighbouring residues in protein, DNA or RNA chains. The B-factors column lists the minimum, median, 95th percentile and maximum values of B factors of atoms in the group. The column labelled 'Q< 0.9' lists the number of atoms with occupancy less than 0.9.

Mol	Type	Chain	Res	Atoms	RSR	LLDF	B-factors(Å ²)	Q<0.9
7	GOL	D	709	6/6	0.35	11.15	42,42,42,42	0
7	GOL	B	704	6/6	0.36	8.99	66,66,66,66	0
7	GOL	C	707	6/6	0.42	7.90	66,66,66,66	0
5	MG	C	603	1/1	0.33	7.27	66,66,66,66	0

Continued on next page...

Continued from previous page...

Mol	Type	Chain	Res	Atoms	RSR	LLDF	B-factors(\AA^2)	Q<0.9
7	GOL	C	705	6/6	0.52	5.77	66,66,66,66	0
7	GOL	A	703	6/6	0.29	4.25	66,66,66,66	0
7	GOL	D	706	6/6	0.36	3.17	66,66,66,66	0
7	GOL	C	709	6/6	0.23	2.93	42,42,42,42	0
7	GOL	D	708	6/6	0.30	2.92	66,66,66,66	0
3	OXL	C	533	6/6	0.27	2.60	66,66,66,66	0
7	GOL	B	705	6/6	0.26	2.28	66,66,66,66	0
5	MG	A	601	1/1	0.24	1.90	66,66,66,66	0
3	OXL	D	533	6/6	0.19	1.87	66,66,66,66	0
7	GOL	A	705	6/6	0.24	1.66	66,66,66,66	0
4	PO4	D	534	5/5	0.17	1.32	66,66,66,66	0
7	GOL	A	704	6/6	0.31	1.31	66,66,66,66	0
5	MG	D	604	1/1	0.17	1.20	66,66,66,66	0
2	FBP	A	532	20/20	0.17	0.67	66,66,66,66	0
5	MG	B	602	1/1	0.22	0.67	66,66,66,66	0
7	GOL	A	706	6/6	0.40	0.64	42,42,42,42	0
7	GOL	C	708	6/6	0.28	0.45	66,66,66,66	0
7	GOL	D	705	6/6	0.22	0.43	66,66,66,66	0
7	GOL	D	707	6/6	0.24	0.35	66,66,66,66	0
6	K	A	701	1/1	0.17	0.22	66,66,66,66	0
2	FBP	B	532	20/20	0.15	0.14	66,66,66,66	0
6	K	B	702	1/1	0.15	-0.22	66,66,66,66	0
3	OXL	B	533	6/6	0.17	-0.26	66,66,66,66	0
4	PO4	A	534	5/5	0.16	-0.26	66,66,66,66	0
7	GOL	C	706	6/6	0.18	-0.31	66,66,66,66	0
7	GOL	B	706	6/6	0.16	-0.39	42,42,42,42	0
4	PO4	C	534	5/5	0.14	-0.41	66,66,66,66	0
7	GOL	B	703	6/6	0.16	-0.43	66,66,66,66	0
4	PO4	B	534	5/5	0.15	-0.46	66,66,66,66	0
7	GOL	C	704	6/6	0.14	-0.80	66,66,66,66	0
6	K	C	703	1/1	0.13	-0.84	66,66,66,66	0
7	GOL	A	702	6/6	0.15	-0.85	66,66,66,66	0
2	FBP	D	532	20/20	0.13	-0.97	66,66,66,66	0
2	FBP	C	532	20/20	0.11	-1.41	66,66,66,66	0
3	OXL	A	533	6/6	0.13	-1.55	66,66,66,66	0
6	K	D	704	1/1	0.07	-5.15	66,66,66,66	0

6.5 Other polymers ⓘ

There are no such residues in this entry.