



wwPDB X-ray Structure Validation Summary Report

Feb 28, 2014 – 10:51 PM GMT

PDB ID : 3TB5
Title : Crystal Structure of the Enterococcus faecalis Methionine aminopeptidase apo form
Authors : Kishor, C.; Gumpena, R.; Reddi, R.; Addlagatta, A.
Deposited on : 2011-08-05
Resolution : 2.30 Å(reported)

This is a wwPDB validation summary report for a publicly released PDB entry.

We welcome your comments at validation@mail.wwpdb.org

A user guide is available at <http://wwpdb.org/ValidationPDFNotes.html>

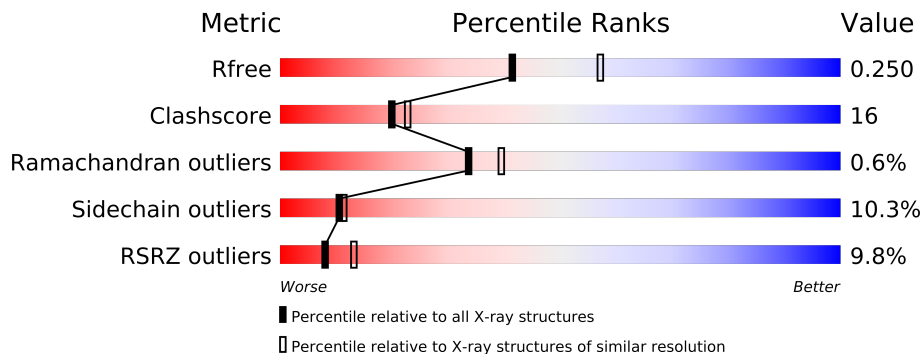
The following versions of software and data (see [references](#)) were used in the production of this report:

MolProbity	:	4.02b-467
Mogul	:	1.15 2013
Xtriage (Phenix)	:	dev-1323
EDS	:	stable22639
Percentile statistics	:	21963
Refmac	:	5.8.0049
CCP4	:	6.3.0 (Settle)
Ideal geometry (proteins)	:	Engh & Huber (2001)
Ideal geometry (DNA, RNA)	:	Parkinson et. al. (1996)
Validation Pipeline (wwPDB-VP)	:	stable22683

1 Overall quality at a glance

The reported resolution of this entry is 2.30 Å.

Percentile scores (ranging between 0-100) for global validation metrics of the entry are shown in the following graphic. The table shows the number of entries on which the scores are based.



Metric	Whole archive (#Entries)	Similar resolution (#Entries, resolution range(Å))
R_{free}	66092	2929 (2.30-2.30)
Clashscore	79885	3679 (2.30-2.30)
Ramachandran outliers	78287	3642 (2.30-2.30)
Sidechain outliers	78261	3641 (2.30-2.30)
RSRZ outliers	66119	2930 (2.30-2.30)

The table below summarises the geometric issues observed across the polymeric chains and their fit to the electron density. The red, orange, yellow and green segments on the lower bar indicate the fraction of residues that contain outliers for ≥ 3 , 2, 1 and 0 types of geometric quality criteria. The upper red bar (where present) indicates the fraction of residues that have poor fit to the electron density.

Mol	Chain	Length	Quality of chain
1	A	264	
1	B	264	
1	C	264	

The following table lists non-polymeric compounds that are outliers for geometric or electron-density-fit criteria:

Mol	Type	Chain	Res	Geometry	Electron density
2	CIT	B	265[A]	-	X

2 Entry composition

There are 3 unique types of molecules in this entry. The entry contains 5897 atoms, of which 0 are hydrogen and 0 are deuterium.

In the tables below, the ZeroOcc column contains the number of atoms modelled with zero occupancy, the AltConf column contains the number of residues with at least one atom in alternate conformation and the Trace column contains the number of residues modelled with at most 2 atoms.

- Molecule 1 is a protein called Methionine aminopeptidase.

Mol	Chain	Residues	Atoms					ZeroOcc	AltConf	Trace
1	A	254	Total	C	N	O	S	0	11	0
			2033	1290	335	392	16			
1	B	254	Total	C	N	O	S	0	11	0
			2034	1290	335	391	18			
1	C	207	Total	C	N	O	S	0	2	0
			1619	1021	272	311	15			

There are 30 discrepancies between the modelled and reference sequences:

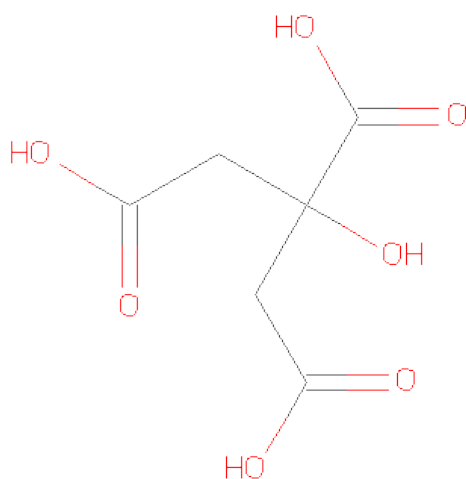
Chain	Residue	Modelled	Actual	Comment	Reference
A	255	LEU	-	EXPRESSION TAG	UNP C7VIN6
A	256	GLU	-	EXPRESSION TAG	UNP C7VIN6
A	257	HIS	-	EXPRESSION TAG	UNP C7VIN6
A	258	HIS	-	EXPRESSION TAG	UNP C7VIN6
A	259	HIS	-	EXPRESSION TAG	UNP C7VIN6
A	260	PRO	-	EXPRESSION TAG	UNP C7VIN6
A	261	PRO	-	EXPRESSION TAG	UNP C7VIN6
A	262	THR	-	EXPRESSION TAG	UNP C7VIN6
A	263	GLU	-	EXPRESSION TAG	UNP C7VIN6
A	264	GLU	-	EXPRESSION TAG	UNP C7VIN6
B	255	LEU	-	EXPRESSION TAG	UNP C7VIN6
B	256	GLU	-	EXPRESSION TAG	UNP C7VIN6
B	257	HIS	-	EXPRESSION TAG	UNP C7VIN6
B	258	HIS	-	EXPRESSION TAG	UNP C7VIN6
B	259	HIS	-	EXPRESSION TAG	UNP C7VIN6
B	260	PRO	-	EXPRESSION TAG	UNP C7VIN6
B	261	PRO	-	EXPRESSION TAG	UNP C7VIN6
B	262	THR	-	EXPRESSION TAG	UNP C7VIN6
B	263	GLU	-	EXPRESSION TAG	UNP C7VIN6
B	264	GLU	-	EXPRESSION TAG	UNP C7VIN6
C	255	LEU	-	EXPRESSION TAG	UNP C7VIN6
C	256	GLU	-	EXPRESSION TAG	UNP C7VIN6
C	257	HIS	-	EXPRESSION TAG	UNP C7VIN6

Continued on next page...

Continued from previous page...

Chain	Residue	Modelled	Actual	Comment	Reference
C	258	HIS	-	EXPRESSION TAG	UNP C7VIN6
C	259	HIS	-	EXPRESSION TAG	UNP C7VIN6
C	260	PRO	-	EXPRESSION TAG	UNP C7VIN6
C	261	PRO	-	EXPRESSION TAG	UNP C7VIN6
C	262	THR	-	EXPRESSION TAG	UNP C7VIN6
C	263	GLU	-	EXPRESSION TAG	UNP C7VIN6
C	264	GLU	-	EXPRESSION TAG	UNP C7VIN6

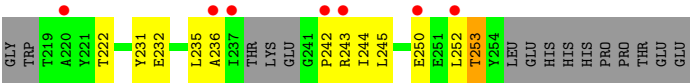
- Molecule 2 is CITRIC ACID (three-letter code: CIT) (formula: $C_6H_8O_7$).



Mol	Chain	Residues	Atoms			ZeroOcc	AltConf
2	A	1	Total	C	O	0	1
			26	12	14		
2	B	1	Total	C	O	0	1
			26	12	14		

- Molecule 3 is water.

Mol	Chain	Residues	Atoms		ZeroOcc	AltConf
3	A	77	Total	O	0	0
			77	77		
3	B	74	Total	O	0	0
			74	74		
3	C	8	Total	O	0	0
			8	8		



4 Data and refinement statistics

Property	Value	Source
Space group	C 1 2 1	Depositor
Cell constants a, b, c, α , β , γ	120.74Å 132.13Å 85.30Å 90.00° 133.36° 90.00°	Depositor
Resolution (Å)	36.47 – 2.30 36.47 – 2.30	Depositor EDS
% Data completeness (in resolution range)	99.9 (36.47-2.30) 99.9 (36.47-2.30)	Depositor EDS
R_{merge}	0.05	Depositor
R_{sym}	0.03	Depositor
$\langle I/\sigma(I) \rangle$ ¹	4.47 (at 2.29Å)	Xtriage
Refinement program	REFMAC 5.5.0109	Depositor
R, R_{free}	0.197 , 0.255 0.196 , 0.250	Depositor DCC
R_{free} test set	2157 reflections (5.27%)	DCC
Wilson B-factor (Å ²)	30.0	Xtriage
Anisotropy	0.096	Xtriage
Bulk solvent k_{sol} (e/Å ³), B_{sol} (Å ²)	0.35 , 26.4	EDS
Estimated twinning fraction	0.104 for h+2*l,k,-h-l 0.025 for -h-2*l,-k,l 0.013 for h,-k,-h-l	Xtriage
L-test for twinning	$\langle L \rangle = 0.50$, $\langle L^2 \rangle = 0.33$	Xtriage
Outliers	0 of 43082 reflections	Xtriage
F_o, F_c correlation	0.94	EDS
Total number of atoms	5897	wwPDB-VP
Average B, all atoms (Å ²)	37.0	wwPDB-VP

Xtriage's analysis on translational NCS is as follows: *The largest off-origin peak in the Patterson function is 4.90% of the height of the origin peak. No significant pseudotranslation is detected.*

¹Intensities estimated from amplitudes.

5 Model quality

5.1 Standard geometry

Bond lengths and bond angles in the following residue types are not validated in this section: CIT

The Z score for a bond length (or angle) is the number of standard deviations the observed value is removed from the expected value. A bond length (or angle) with $|Z| > 5$ is considered an outlier worth inspection. RMSZ is the root-mean-square of all Z scores of the bond lengths (or angles).

Mol	Chain	Bond lengths		Bond angles	
		RMSZ	# Z >5	RMSZ	# Z >5
1	A	1.24	4/2105 (0.2%)	1.20	12/2846 (0.4%)
1	B	1.25	6/2106 (0.3%)	1.14	14/2844 (0.5%)
1	C	0.84	0/1650	0.82	2/2221 (0.1%)
All	All	1.14	10/5861 (0.2%)	1.09	28/7911 (0.4%)

Chiral center outliers are detected by calculating the chiral volume of a chiral center and verifying if the center is modelled as a planar moiety or with the opposite hand. A planarity outlier is detected by checking planarity of atoms in a peptide group, atoms in a mainchain group or atoms of a sidechain that are expected to be planar.

Mol	Chain	#Chirality outliers	#Planarity outliers
1	A	0	1
1	B	0	1
All	All	0	2

The worst 5 of 10 bond length outliers are listed below:

Mol	Chain	Res	Type	Atoms	Z	Observed(Å)	Ideal(Å)
1	B	135	GLU	CG-CD	7.98	1.64	1.51
1	A	49	GLU	CB-CG	-6.84	1.39	1.52
1	A	44	VAL	CB-CG1	5.96	1.65	1.52
1	B	115	SER	CB-OG	-5.93	1.34	1.42
1	B	254	TYR	CD2-CE2	5.90	1.48	1.39

The worst 5 of 28 bond angle outliers are listed below:

Mol	Chain	Res	Type	Atoms	Z	Observed(°)	Ideal(°)
1	B	81	ARG	NE-CZ-NH1	13.51	127.05	120.30
1	B	81	ARG	NE-CZ-NH2	-12.82	113.89	120.30
1	A	81	ARG	NE-CZ-NH1	12.20	126.40	120.30

Continued on next page...

Continued from previous page...

Mol	Chain	Res	Type	Atoms	Z	Observed(°)	Ideal(°)
1	A	81	ARG	NE-CZ-NH2	-11.95	114.33	120.30
1	A	163	ARG	NE-CZ-NH1	-11.22	114.69	120.30

There are no chirality outliers.

All (2) planarity outliers are listed below:

Mol	Chain	Res	Type	Group
1	A	188	LYS	Peptide
1	B	188	LYS	Peptide

5.2 Close contacts ⓘ

In the following table, the Non-H and H(model) columns list the number of non-hydrogen atoms and hydrogen atoms in the chain respectively. The H(added) column lists the number of hydrogens added by MolProbity. The Clashes column lists the number of clashes within the asymmetric unit, and the number in parentheses is this value normalized per 1000 atoms of the molecule in the chain. The Symm-Clashes column gives symmetry related clashes, in the same way as for the Clashes column.

Mol	Chain	Non-H	H(model)	H(added)	Clashes	Symm-Clashes
1	A	2033	0	2019	64	0
1	B	2034	0	2022	77	0
1	C	1619	0	1600	41	0
2	A	26	0	10	2	0
2	B	26	0	10	4	0
3	A	77	0	0	2	0
3	B	74	0	0	4	0
3	C	8	0	0	0	0
All	All	5897	0	5661	182	0

Clashscore is defined as the number of clashes calculated for the entry per 1000 atoms (including hydrogens) of the entry. The overall clashscore for this entry is 16.

The worst 5 of 182 close contacts within the same asymmetric unit are listed below.

Atom-1	Atom-2	Distance(Å)	Clash(Å)
1:A:119:ILE:HG22	1:A:123:MET:CE	1.72	1.18
1:A:119:ILE:CG2	1:A:123:MET:CE	2.23	1.17
1:B:148:HIS:CB	1:B:186:ALA:HB2	1.77	1.13
1:B:111:VAL:HG11	1:B:115:SER:HB3	1.12	1.11
1:B:148:HIS:HB3	1:B:186:ALA:HB2	1.17	1.10

There are no symmetry-related clashes.

5.3 Torsion angles

5.3.1 Protein backbone ⓘ

In the following table, the Percentiles column shows the percent Ramachandran outliers of the chain as a percentile score with respect to all X-ray entries followed by that with respect to entries of similar resolution. The Analysed column shows the number of residues for which the backbone conformation was analysed, and the total number of residues.

Mol	Chain	Analysed	Favoured	Allowed	Outliers	Percentiles	
1	A	263/264 (100%)	259 (98%)	4 (2%)	0	100	100
1	B	263/264 (100%)	257 (98%)	5 (2%)	1 (0%)	43	52
1	C	196/264 (74%)	182 (93%)	11 (6%)	3 (2%)	15	13
All	All	722/792 (91%)	698 (97%)	20 (3%)	4 (1%)	33	39

All (4) Ramachandran outliers are listed below:

Mol	Chain	Res	Type
1	C	48	ILE
1	C	135	GLU
1	B	242	PRO
1	C	6	SER

5.3.2 Protein sidechains ⓘ

In the following table, the Percentiles column shows the percent sidechain outliers of the chain as a percentile score with respect to all X-ray entries followed by that with respect to entries of similar resolution. The Analysed column shows the number of residues for which the sidechain conformation was analysed, and the total number of residues.

Mol	Chain	Analysed	Rotameric	Outliers	Percentiles	
1	A	223/223 (100%)	205 (92%)	18 (8%)	17	20
1	B	223/223 (100%)	199 (89%)	24 (11%)	9	10
1	C	178/223 (80%)	152 (85%)	26 (15%)	5	4
All	All	624/669 (93%)	556 (89%)	68 (11%)	10	10

5 of 68 residues with a non-rotameric sidechain are listed below:

Mol	Chain	Res	Type
1	B	180[A]	ILE
1	B	235	LEU
1	C	139	VAL
1	B	180[B]	ILE
1	B	197	VAL

Some sidechains can be flipped to improve hydrogen bonding and reduce clashes. All (3) such sidechains are listed below:

Mol	Chain	Res	Type
1	A	248	GLN
1	B	248	GLN
1	C	138	GLN

5.3.3 RNA ⓘ

There are no RNA chains in this entry.

5.4 Non-standard residues in protein, DNA, RNA chains ⓘ

There are no non-standard protein/DNA/RNA residues in this entry.

5.5 Carbohydrates ⓘ

There are no carbohydrates in this entry.

5.6 Ligand geometry ⓘ

4 ligands are modelled in this entry.

In the following table, the Counts columns list the number of bonds (or angles) for which Mogul statistics could be retrieved, the number of bonds (or angles) that are observed in the model and the number of bonds (or angles) that are defined in the chemical component dictionary. The Link column lists molecule types, if any, to which the group is linked. The Z score for a bond length (or angle) is the number of standard deviations the observed value is removed from the expected value. A bond length (or angle) with $|Z| > 2$ is considered an outlier worth inspection. RMSZ is the root-mean-square of all Z scores of the bond lengths (or angles).

Mol	Type	Chain	Res	Link	Bond lengths			Bond angles		
					Counts	RMSZ	$\# Z > 2$	Counts	RMSZ	$\# Z > 2$
2	CIT	A	265[A]	-	12,12,12	0.96	0	17,17,17	1.99	4 (23%)

Mol	Type	Chain	Res	Link	Bond lengths			Bond angles		
					Counts	RMSZ	# Z > 2	Counts	RMSZ	# Z > 2
2	CIT	A	265[B]	-	12,12,12	0.95	0	17,17,17	1.93	4 (23%)
2	CIT	B	265[A]	-	12,12,12	0.96	0	17,17,17	1.51	2 (11%)
2	CIT	B	265[B]	-	12,12,12	0.95	0	17,17,17	1.81	5 (29%)

In the following table, the Chirals column lists the number of chiral outliers, the number of chiral centers analysed, the number of these observed in the model and the number defined in the chemical component dictionary. Similar counts are reported in the Torsion and Rings columns. '-' means no outliers of that kind were identified.

Mol	Type	Chain	Res	Link	Chirals	Torsions	Rings
2	CIT	A	265[A]	-	-	0/16/16/16	0/0/0/0
2	CIT	A	265[B]	-	-	0/16/16/16	0/0/0/0
2	CIT	B	265[A]	-	-	0/16/16/16	0/0/0/0
2	CIT	B	265[B]	-	-	0/16/16/16	0/0/0/0

There are no bond length outliers.

The worst 5 of 15 bond angle outliers are listed below:

Mol	Chain	Res	Type	Atoms	Z	Observed(°)	Ideal(°)
2	A	265[B]	CIT	O6-C6-C3	5.61	121.04	112.89
2	A	265[A]	CIT	O6-C6-C3	5.08	120.27	112.89
2	B	265[B]	CIT	O6-C6-C3	3.96	118.65	112.89
2	B	265[B]	CIT	C2-C3-C6	-3.54	101.92	110.12
2	B	265[A]	CIT	O6-C6-C3	2.96	117.19	112.89

There are no chirality outliers.

There are no torsion outliers.

There are no ring outliers.

5.7 Other polymers ⓘ

There are no such residues in this entry.

5.8 Polymer linkage issues

There are no chain breaks in this entry.

6 Fit of model and data ⓘ

6.1 Protein, DNA and RNA chains ⓘ

In the following table, the column labelled ‘#RSRZ> 2’ contains the number (and percentage) of RSRZ outliers, followed by percent RSRZ outliers for the chain as percentile scores relative to all X-ray entries and entries of similar resolution. The OWAB column contains the minimum, median, 95th percentile and maximum values of the occupancy-weighted average B-factor per residue. The column labelled ‘Q< 0.9’ lists the number of (and percentage) of residues with an average occupancy less than 0.9.

Mol	Chain	Analysed	<RSRZ>	#RSRZ>2	OWAB(Å ²)	Q<0.9
1	A	254/264 (96%)	-0.08	2 (0%) 83 90	12, 22, 45, 57	0
1	B	254/264 (96%)	-0.24	3 (1%) 75 83	14, 24, 45, 57	0
1	C	207/264 (78%)	1.59	65 (31%) 1 1	44, 66, 90, 99	0
All	All	715/792 (90%)	0.35	70 (9%) 8 13	12, 27, 80, 99	0

The worst 5 of 70 RSRZ outliers are listed below:

Mol	Chain	Res	Type	RSRZ
1	C	7	PRO	5.9
1	C	66	ALA	5.8
1	C	4	LEU	5.4
1	C	96	CYS	5.3
1	C	139	VAL	4.9

6.2 Non-standard residues in protein, DNA, RNA chains ⓘ

There are no non-standard protein/DNA/RNA residues in this entry.

6.3 Carbohydrates ⓘ

There are no carbohydrates in this entry.

6.4 Ligands ⓘ

In the following table, the Atoms column lists the number of modelled atoms in the group and the number defined in the chemical component dictionary. LLDF column lists the quality of electron density of the group with respect to its neighbouring residues in protein, DNA or RNA chains. The B-factors column lists the minimum, median, 95th percentile and maximum values of B factors

of atoms in the group. The column labelled 'Q< 0.9' lists the number of atoms with occupancy less than 0.9.

Mol	Type	Chain	Res	Atoms	RSR	LLDF	B-factors(\AA^2)	Q<0.9
2	CIT	B	265[A]	13/13	0.17	2.30	36,40,42,43	13
2	CIT	B	265[B]	13/13	0.17	1.87	33,38,39,40	13
2	CIT	A	265[B]	13/13	0.20	1.53	39,42,43,44	13
2	CIT	A	265[A]	13/13	0.20	1.47	44,48,52,52	13

6.5 Other polymers ⓘ

There are no such residues in this entry.