



Full wwPDB X-ray Structure Validation Report i

Feb 28, 2014 – 07:58 PM GMT

PDB ID : 1TPU
Title : S96P CHANGE IS A SECOND-SITE SUPPRESSOR FOR H95N SLUGGISH
MUTANT TRIOSEPHOSPHATE ISOMERASE
Authors : Zhang, Z.; Sugio, S.; Komives, E.A.; Liu, K.D.; Stock, A.M.; Narayana, N.;
Xuong, Ng.H.; Knowles, J.R.; Petsko, G.A.; Ringe, D.
Deposited on : 1994-11-07
Resolution : 1.90 Å(reported)

This is a full wwPDB validation report for a publicly released PDB entry.
We welcome your comments at validation@mail.wwpdb.org
A user guide is available at <http://wwpdb.org/ValidationPDFNotes.html>

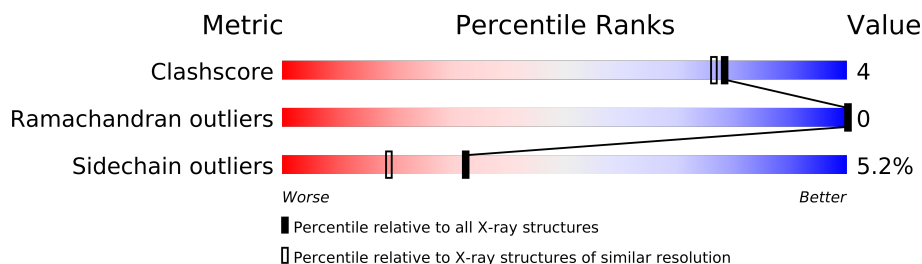
The following versions of software and data (see [references](#)) were used in the production of this report:

MolProbity	:	4.02b-467
Mogul	:	1.15 2013
Xtriage (Phenix)	:	NOT EXECUTED
EDS	:	NOT EXECUTED
Percentile statistics	:	21963
Ideal geometry (proteins)	:	Engh & Huber (2001)
Ideal geometry (DNA, RNA)	:	Parkinson et. al. (1996)
Validation Pipeline (wwPDB-VP)	:	stable22683

1 Overall quality at a glance

The reported resolution of this entry is 1.90 Å.



Percentile scores (ranging between 0-100) for global validation metrics of the entry are shown in the following graphic. The table shows the number of entries on which the scores are based.



Metric	Whole archive (#Entries)	Similar resolution (#Entries, resolution range(Å))
Clashscore	79885	4465 (1.90-1.90)
Ramachandran outliers	78287	4413 (1.90-1.90)
Sidechain outliers	78261	4414 (1.90-1.90)

The table below summarises the geometric issues observed across the polymeric chains and their fit to the electron density. The red, orange, yellow and green segments on the lower bar indicate the fraction of residues that contain outliers for ≥ 3 , 2, 1 and 0 types of geometric quality criteria. The upper red bar (where present) indicates the fraction of residues that have poor fit to the electron density.

Note EDS was not executed.

Mol	Chain	Length	Quality of chain
1	A	247	
1	B	247	

2 Entry composition

There are 3 unique types of molecules in this entry. The entry contains 4014 atoms, of which 0 are hydrogen and 0 are deuterium.

In the tables below, the ZeroOcc column contains the number of atoms modelled with zero occupancy, the AltConf column contains the number of residues with at least one atom in alternate conformation and the Trace column contains the number of residues modelled with at most 2 atoms.

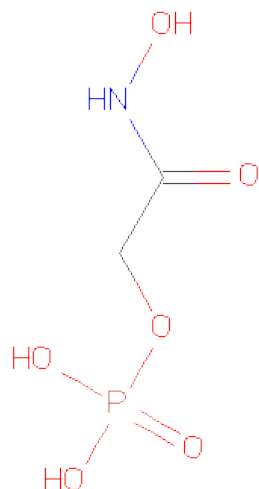
- Molecule 1 is a protein called TRIOSEPHOSPHATE ISOMERASE.

Mol	Chain	Residues	Atoms					ZeroOcc	AltConf	Trace
1	A	245	Total	C	N	O	S	0	0	0
			1854	1174	324	350	6			
1	B	245	Total	C	N	O	S	0	0	0
			1854	1174	324	350	6			

There are 4 discrepancies between the modelled and reference sequences:

Chain	Residue	Modelled	Actual	Comment	Reference
A	95	ASN	HIS	ENGINEERED MUTATION	UNP P00940
A	194	THR	SER	CONFLICT	UNP P00940
B	95	ASN	HIS	ENGINEERED MUTATION	UNP P00940
B	194	THR	SER	CONFLICT	UNP P00940

- Molecule 2 is PHOSPHOGLYCOLOHYDROXAMICACID (three-letter code: PGH) (formula: C₂H₆NO₆P).



Mol	Chain	Residues	Atoms					ZeroOcc	AltConf
2	A	1	Total	C	N	O	P	0	0
			10	2	1	6	1		
2	B	1	Total	C	N	O	P	0	0
			10	2	1	6	1		

- Molecule 3 is water.

Mol	Chain	Residues	Atoms		ZeroOcc	AltConf
3	A	142	Total	O	0	0
			142	142		
3	B	144	Total	O	0	0
			144	144		

3 Residue-property plots

These plots are drawn for all protein, RNA and DNA chains in the entry. The first graphic for a chain summarises the proportions of errors displayed in the second graphic. The second graphic shows the sequence view annotated by issues in geometry and electron density. Residues are color-coded according to the number of geometric quality criteria for which they contain at least one outlier: green = 0, yellow = 1, orange = 2 and red = 3 or more. A red dot above a residue indicates a poor fit to the electron density ($RSRZ > 2$). Stretches of 2 or more consecutive residues without any outlier are shown as a green connector. Residues present in the sample, but not in the model, are shown in grey.

Note EDS was not executed.

• Molecule 1: TRIOSEPHOSPHATE ISOMERASE

Chain A: 



• Molecule 1: TRIOSEPHOSPHATE ISOMERASE

Chain B: 



4 Data and refinement statistics

Xtriage (Phenix) and EDS were not executed - this section will therefore be incomplete.

Property	Value	Source
Space group	P 21 21 21	Depositor
Cell constants a, b, c, α , β , γ	136.30Å 74.10Å 57.30Å 90.00° 90.00° 90.00°	Depositor
Resolution (Å)	(Not available) – 1.90	Depositor
% Data completeness (in resolution range)	(Not available) ((Not available)-1.90)	Depositor
R_{merge}	(Not available)	Depositor
R_{sym}	(Not available)	Depositor
Refinement program	X-PLOR	Depositor
R, R_{free}	0.176 , (Not available)	Depositor
Estimated twinning fraction	No twinning to report.	Xtriage
Total number of atoms	4014	wwPDB-VP
Average B, all atoms (Å ²)	16.0	wwPDB-VP

5 Model quality

5.1 Standard geometry

Bond lengths and bond angles in the following residue types are not validated in this section: PGH

The Z score for a bond length (or angle) is the number of standard deviations the observed value is removed from the expected value. A bond length (or angle) with $|Z| > 5$ is considered an outlier worth inspection. RMSZ is the root-mean-square of all Z scores of the bond lengths (or angles).

Mol	Chain	Bond lengths		Bond angles	
		RMSZ	$\# Z > 5$	RMSZ	$\# Z > 5$
1	A	0.83	0/1888	1.34	16/2548 (0.6%)
1	B	0.80	0/1888	1.34	15/2548 (0.6%)
All	All	0.82	0/3776	1.34	31/5096 (0.6%)

There are no bond length outliers.

All (31) bond angle outliers are listed below:

Mol	Chain	Res	Type	Atoms	Z	Observed(°)	Ideal(°)
1	B	157	TRP	CD1-CG-CD2	8.64	113.21	106.30
1	A	90	TRP	CD1-CG-CD2	8.57	113.16	106.30
1	B	90	TRP	CD1-CG-CD2	7.87	112.59	106.30
1	B	168	TRP	CD1-CG-CD2	7.71	112.47	106.30
1	A	157	TRP	CD1-CG-CD2	7.70	112.46	106.30
1	A	168	TRP	CD1-CG-CD2	7.70	112.46	106.30
1	A	12	TRP	CD1-CG-CD2	7.45	112.26	106.30
1	B	90	TRP	CE2-CD2-CG	-7.38	101.40	107.30
1	A	168	TRP	CE2-CD2-CG	-7.36	101.41	107.30
1	A	90	TRP	CE2-CD2-CG	-7.35	101.42	107.30
1	A	157	TRP	CE2-CD2-CG	-7.30	101.46	107.30
1	B	157	TRP	CE2-CD2-CG	-7.10	101.62	107.30
1	B	191	TRP	CD1-CG-CD2	7.08	111.97	106.30
1	B	12	TRP	CD1-CG-CD2	7.00	111.90	106.30
1	B	12	TRP	CE2-CD2-CG	-6.71	101.93	107.30
1	B	191	TRP	CE2-CD2-CG	-6.69	101.95	107.30
1	A	12	TRP	CE2-CD2-CG	-6.64	101.99	107.30
1	A	157	TRP	CG-CD2-CE3	6.53	139.77	133.90
1	B	52	ARG	NE-CZ-NH2	-6.47	117.06	120.30
1	B	168	TRP	CE2-CD2-CG	-6.38	102.20	107.30
1	A	191	TRP	CE2-CD2-CG	-6.33	102.24	107.30
1	B	52	ARG	NE-CZ-NH1	6.23	123.42	120.30

Continued on next page...

Continued from previous page...

Mol	Chain	Res	Type	Atoms	Z	Observed(°)	Ideal(°)
1	A	191	TRP	CD1-CG-CD2	6.18	111.25	106.30
1	B	98	ARG	NE-CZ-NH1	6.18	123.39	120.30
1	B	157	TRP	CG-CD1-NE1	-5.81	104.29	110.10
1	A	90	TRP	CG-CD1-NE1	-5.65	104.45	110.10
1	A	168	TRP	CB-CG-CD1	-5.36	120.03	127.00
1	A	12	TRP	CG-CD1-NE1	-5.27	104.83	110.10
1	A	157	TRP	CG-CD1-NE1	-5.20	104.90	110.10
1	B	168	TRP	CG-CD1-NE1	-5.16	104.94	110.10
1	A	168	TRP	CG-CD2-CE3	5.03	138.43	133.90

There are no chirality outliers.

There are no planarity outliers.

5.2 Close contacts ⓘ

In the following table, the Non-H and H(model) columns list the number of non-hydrogen atoms and hydrogen atoms in the chain respectively. The H(added) column lists the number of hydrogens added by MolProbity. The Clashes column lists the number of clashes within the asymmetric unit, and the number in parentheses is this value normalized per 1000 atoms of the molecule in the chain. The Symm-Clashes column gives symmetry related clashes, in the same way as for the Clashes column.

Mol	Chain	Non-H	H(model)	H(added)	Clashes	Symm-Clashes
1	A	1854	0	1862	14	0
1	B	1854	0	1862	13	0
2	A	10	0	4	0	0
2	B	10	0	4	3	0
3	A	142	0	0	1	0
3	B	144	0	0	1	0
All	All	4014	0	3732	27	0

Clashscore is defined as the number of clashes calculated for the entry per 1000 atoms (including hydrogens) of the entry. The overall clashscore for this entry is 4.

All (27) close contacts within the same asymmetric unit are listed below.

Atom-1	Atom-2	Distance(Å)	Clash(Å)
1:B:127:ILE:HD11	1:B:188:LEU:HD21	1.74	0.69
1:A:45:SER:HA	1:A:48:LEU:HD22	1.73	0.68
1:A:213:THR:H	1:A:216:ASN:HD21	1.48	0.60
1:B:25:ILE:HG21	1:B:54:LYS:HB3	1.84	0.60
1:B:165:GLU:HB2	1:B:170:ILE:HD11	1.84	0.59

Continued on next page...

Continued from previous page...

Atom-1	Atom-2	Distance(Å)	Clash(Å)
1:A:131:LEU:O	1:A:135:GLU:HG2	2.04	0.58
1:A:213:THR:H	1:A:216:ASN:ND2	2.03	0.55
1:A:218:LYS:HG3	1:A:246:ALA:O	2.07	0.54
1:A:167:VAL:HA	1:A:170:ILE:HD12	1.89	0.53
1:B:213:THR:H	1:B:216:ASN:HD21	1.56	0.51
1:B:213:THR:H	1:B:216:ASN:ND2	2.09	0.50
1:B:232:GLY:HA3	2:B:250:PGH:H21	1.93	0.49
1:A:80:PRO:HB2	1:A:119:GLU:HG3	1.95	0.49
1:B:236:LEU:O	1:B:237:LYS:HE3	2.14	0.48
1:A:4:ARG:HD3	1:A:202:GLN:O	2.16	0.46
1:B:193:LYS:HD3	3:B:623:HOH:O	2.16	0.45
1:A:196:VAL:HG11	1:A:200:VAL:HG11	1.99	0.44
1:B:232:GLY:CA	2:B:250:PGH:H21	2.47	0.44
1:A:165:GLU:HB2	1:A:170:ILE:HD11	1.99	0.44
1:B:232:GLY:N	2:B:250:PGH:H21	2.31	0.44
1:A:125:ALA:HB1	1:A:150:ILE:HD13	2.00	0.44
1:B:216:ASN:HD22	1:B:216:ASN:C	2.21	0.44
1:A:135:GLU:HG3	3:A:736:HOH:O	2.18	0.43
1:A:122:GLY:HA2	1:A:159:LYS:HB3	2.02	0.42
1:B:84:LYS:HG3	1:B:121:LEU:HD21	2.02	0.41
1:A:164:TYR:CE2	1:A:166:PRO:HD3	2.55	0.41
1:B:148:LYS:HE3	1:B:148:LYS:HA	2.01	0.40

There are no symmetry-related clashes.

5.3 Torsion angles

5.3.1 Protein backbone ⓘ

In the following table, the Percentiles column shows the percent Ramachandran outliers of the chain as a percentile score with respect to all X-ray entries followed by that with respect to entries of similar resolution. The Analysed column shows the number of residues for which the backbone conformation was analysed, and the total number of residues.

Mol	Chain	Analysed	Favoured	Allowed	Outliers	Percentiles	
1	A	243/247 (98%)	237 (98%)	6 (2%)	0	100	100
1	B	243/247 (98%)	238 (98%)	5 (2%)	0	100	100
All	All	486/494 (98%)	475 (98%)	11 (2%)	0	100	100

There are no Ramachandran outliers to report.

5.3.2 Protein sidechains ⓘ

In the following table, the Percentiles column shows the percent sidechain outliers of the chain as a percentile score with respect to all X-ray entries followed by that with respect to entries of similar resolution. The Analysed column shows the number of residues for which the sidechain conformation was analysed, and the total number of residues.

Mol	Chain	Analysed	Rotameric	Outliers	Percentiles	
1	A	191/192 (100%)	181 (95%)	10 (5%)	32	19
1	B	191/192 (100%)	181 (95%)	10 (5%)	32	19
All	All	382/384 (100%)	362 (95%)	20 (5%)	32	19

All (20) residues with a non-rotameric sidechain are listed below:

Mol	Chain	Res	Type
1	A	8	VAL
1	A	32	LYS
1	A	48	LEU
1	A	95	ASN
1	A	127	ILE
1	A	162	LEU
1	A	165	GLU
1	A	205	ARG
1	A	216	ASN
1	A	224	HIS
1	B	40	VAL
1	B	86	ILE
1	B	95	ASN
1	B	130	LYS
1	B	141	LYS
1	B	148	LYS
1	B	165	GLU
1	B	188	LEU
1	B	216	ASN
1	B	237	LYS

Some sidechains can be flipped to improve hydrogen bonding and reduce clashes. All (11) such sidechains are listed below:

Mol	Chain	Res	Type
1	A	65	ASN
1	A	100	HIS
1	A	111	GLN
1	A	115	HIS

Continued on next page...

Continued from previous page...

Mol	Chain	Res	Type
1	A	179	GLN
1	A	216	ASN
1	A	248	HIS
1	B	100	HIS
1	B	115	HIS
1	B	179	GLN
1	B	216	ASN

5.3.3 RNA ⓘ

There are no RNA chains in this entry.

5.4 Non-standard residues in protein, DNA, RNA chains ⓘ

There are no non-standard protein/DNA/RNA residues in this entry.

5.5 Carbohydrates ⓘ

There are no carbohydrates in this entry.

5.6 Ligand geometry ⓘ

2 ligands are modelled in this entry.

In the following table, the Counts columns list the number of bonds (or angles) for which Mogul statistics could be retrieved, the number of bonds (or angles) that are observed in the model and the number of bonds (or angles) that are defined in the chemical component dictionary. The Link column lists molecule types, if any, to which the group is linked. The Z score for a bond length (or angle) is the number of standard deviations the observed value is removed from the expected value. A bond length (or angle) with $|Z| > 2$ is considered an outlier worth inspection. RMSZ is the root-mean-square of all Z scores of the bond lengths (or angles).

Mol	Type	Chain	Res	Link	Bond lengths			Bond angles		
					Counts	RMSZ	$\# Z > 2$	Counts	RMSZ	$\# Z > 2$
2	PGH	A	250	-	9,9,9	1.07	0	12,12,12	1.09	0
2	PGH	B	250	-	9,9,9	0.96	1 (11%)	12,12,12	1.89	4 (33%)

In the following table, the Chirals column lists the number of chiral outliers, the number of chiral centers analysed, the number of these observed in the model and the number defined in the chemical component dictionary. Similar counts are reported in the Torsion and Rings columns. '-' means

no outliers of that kind were identified.

Mol	Type	Chain	Res	Link	Chirals	Torsions	Rings
2	PGH	A	250	-	-	2/8/8/8	0/0/0/0
2	PGH	B	250	-	-	0/8/8/8	0/0/0/0

All (1) bond length outliers are listed below:

Mol	Chain	Res	Type	Atoms	Z	Observed(Å)	Ideal(Å)
2	B	250	PGH	P-O4P	-2.17	1.46	1.54

All (4) bond angle outliers are listed below:

Mol	Chain	Res	Type	Atoms	Z	Observed(°)	Ideal(°)
2	B	250	PGH	O1P-C2-C1	3.92	116.66	110.20
2	B	250	PGH	C2-C1-N2	-3.06	110.91	116.31
2	B	250	PGH	O1-C1-N2	2.05	125.94	123.47
2	B	250	PGH	P-O1P-C2	-2.01	113.99	121.22

There are no chirality outliers.

All (2) torsion outliers are listed below:

Mol	Chain	Res	Type	Atoms
2	A	250	PGH	O1-C1-N2-O2
2	A	250	PGH	C2-C1-N2-O2

There are no ring outliers.

5.7 Other polymers ⓘ

There are no such residues in this entry.

5.8 Polymer linkage issues

There are no chain breaks in this entry.

6 Fit of model and data ⓘ

6.1 Protein, DNA and RNA chains ⓘ

EDS was not executed - this section will therefore be empty.

6.2 Non-standard residues in protein, DNA, RNA chains ⓘ

EDS was not executed - this section will therefore be empty.

6.3 Carbohydrates ⓘ

EDS was not executed - this section will therefore be empty.

6.4 Ligands ⓘ

EDS was not executed - this section will therefore be empty.

6.5 Other polymers ⓘ

EDS was not executed - this section will therefore be empty.