



# Full wwPDB X-ray Structure Validation Report ⓘ

Feb 28, 2014 – 08:53 PM GMT

PDB ID : 2TPS  
Title : THIAMIN PHOSPHATE SYNTHASE  
Authors : Chiu, H.-J.; Reddick, J.J.; Begley, T.P.; Ealick, S.E.  
Deposited on : 1999-03-09  
Resolution : 1.25 Å(reported)

This is a full wwPDB validation report for a publicly released PDB entry.  
We welcome your comments at [validation@mail.wwpdb.org](mailto:validation@mail.wwpdb.org)  
A user guide is available at <http://wwpdb.org/ValidationPDFNotes.html>

---

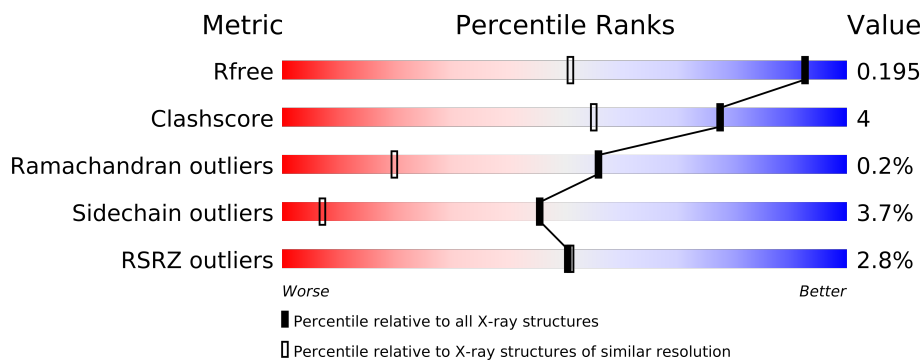
The following versions of software and data (see [references](#)) were used in the production of this report:

MolProbity : 4.02b-467  
Mogul : 1.15 2013  
Xtriage (Phenix) : dev-1323  
EDS : stable22639  
Percentile statistics : 21963  
Refmac : 5.8.0049  
CCP4 : 6.3.0 (Settle)  
Ideal geometry (proteins) : Engh & Huber (2001)  
Ideal geometry (DNA, RNA) : Parkinson et. al. (1996)  
Validation Pipeline (wwPDB-VP) : stable22683

# 1 Overall quality at a glance

The reported resolution of this entry is 1.25 Å.

Percentile scores (ranging between 0-100) for global validation metrics of the entry are shown in the following graphic. The table shows the number of entries on which the scores are based.



Metric	Whole archive (#Entries)	Similar resolution (#Entries, resolution range(Å))
$R_{free}$	66092	1021 (1.30-1.22)
Clashscore	79885	1125 (1.30-1.22)
Ramachandran outliers	78287	1075 (1.30-1.22)
Sidechain outliers	78261	1073 (1.30-1.22)
RSRZ outliers	66119	1021 (1.30-1.22)

The table below summarises the geometric issues observed across the polymeric chains and their fit to the electron density. The red, orange, yellow and green segments on the lower bar indicate the fraction of residues that contain outliers for  $\geq 3$ , 2, 1 and 0 types of geometric quality criteria. The upper red bar (where present) indicates the fraction of residues that have poor fit to the electron density.

Mol	Chain	Length	Quality of chain
1	A	227	
1	B	227	

## 2 Entry composition

There are 5 unique types of molecules in this entry. The entry contains 3922 atoms, of which 0 are hydrogen and 0 are deuterium.

In the tables below, the ZeroOcc column contains the number of atoms modelled with zero occupancy, the AltConf column contains the number of residues with at least one atom in alternate conformation and the Trace column contains the number of residues modelled with at most 2 atoms.

- Molecule 1 is a protein called PROTEIN (THIAMIN PHOSPHATE SYNTHASE).

Mol	Chain	Residues	Atoms					ZeroOcc	AltConf	Trace
1	A	226	Total	C	N	O	S	0	6	0
			1713	1061	306	337	9			
1	B	227	Total	C	N	O	S	0	5	1
			1701	1053	304	336	8			

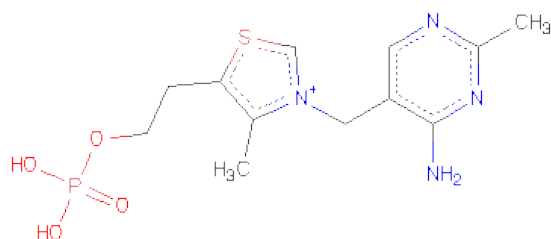
There are 10 discrepancies between the modelled and reference sequences:

Chain	Residue	Modelled	Actual	Comment	Reference
A	9	HIS	-	SEE REMARK 999	UNP P39594
A	10	HIS	-	SEE REMARK 999	UNP P39594
A	11	GLY	-	SEE REMARK 999	UNP P39594
A	12	ILE	-	SEE REMARK 999	UNP P39594
A	13	ARG	-	SEE REMARK 999	UNP P39594
B	9	HIS	-	SEE REMARK 999	UNP P39594
B	10	HIS	-	SEE REMARK 999	UNP P39594
B	11	GLY	-	SEE REMARK 999	UNP P39594
B	12	ILE	-	SEE REMARK 999	UNP P39594
B	13	ARG	-	SEE REMARK 999	UNP P39594

- Molecule 2 is MAGNESIUM ION (three-letter code: MG) (formula: Mg).

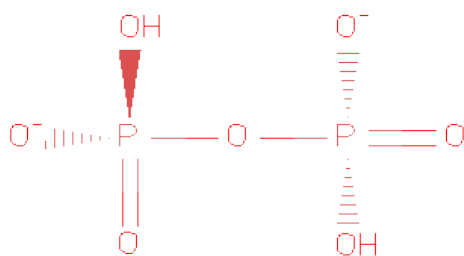
Mol	Chain	Residues	Atoms		ZeroOcc	AltConf
2	B	1	Total	Mg	0	0
			1	1		
2	A	1	Total	Mg	0	0
			1	1		

- Molecule 3 is THIAMIN PHOSPHATE (three-letter code: TPS) (formula: C<sub>12</sub>H<sub>18</sub>N<sub>4</sub>O<sub>4</sub>PS).



Mol	Chain	Residues	Atoms						ZeroOcc	AltConf
3	A	1	Total	C	N	O	P	S	0	0
			22	12	4	4	1	1		
3	B	1	Total	C	N	O	P	S	0	0
			22	12	4	4	1	1		

- Molecule 4 is PYROPHOSPHATE 2- (three-letter code: POP) (formula:  $\text{H}_2\text{O}_7\text{P}_2$ ).



Mol	Chain	Residues	Atoms		ZeroOcc	AltConf
4	A	1	Total	O P	0	0
			9 7 2			
4	B	1	Total	O P	0	0
			9 7 2			

- Molecule 5 is water.

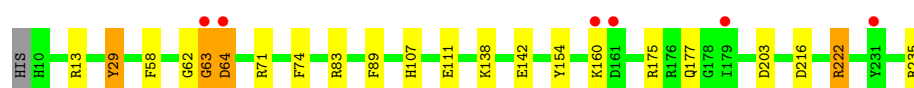
Mol	Chain	Residues	Atoms		ZeroOcc	AltConf
5	A	225	Total 225	O 225	0	0
5	B	219	Total 219	O 219	0	0

### 3 Residue-property plots

These plots are drawn for all protein, RNA and DNA chains in the entry. The first graphic for a chain summarises the proportions of errors displayed in the second graphic. The second graphic shows the sequence view annotated by issues in geometry and electron density. Residues are color-coded according to the number of geometric quality criteria for which they contain at least one outlier: green = 0, yellow = 1, orange = 2 and red = 3 or more. A red dot above a residue indicates a poor fit to the electron density ( $RSRZ > 2$ ). Stretches of 2 or more consecutive residues without any outlier are shown as a green connector. Residues present in the sample, but not in the model, are shown in grey.

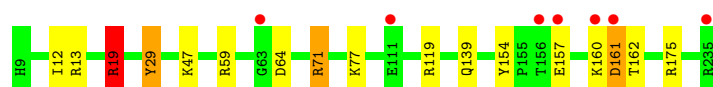
- Molecule 1: PROTEIN (THIAMIN PHOSPHATE SYNTHASE)

Chain A: 



- Molecule 1: PROTEIN (THIAMIN PHOSPHATE SYNTHASE)

Chain B: 



## 4 Data and refinement statistics

Property	Value	Source
Space group	P 43 21 2	Depositor
Cell constants a, b, c, $\alpha$ , $\beta$ , $\gamma$	76.83Å 76.83Å 140.10Å 90.00° 90.00° 90.00°	Depositor
Resolution (Å)	8.00 – 1.25 19.50 – 1.25	Depositor EDS
% Data completeness (in resolution range)	81.6 (8.00-1.25) 78.9 (19.50-1.25)	Depositor EDS
$R_{merge}$	(Not available)	Depositor
$R_{sym}$	0.06	Depositor
$\langle I/\sigma(I) \rangle$ <sup>1</sup>	3.33 (at 1.25Å)	Xtriage
Refinement program	SHELXL-97	Depositor
R, $R_{free}$	0.181 , 0.222 0.188 , 0.195	Depositor DCC
$R_{free}$ test set	4645 reflections (5.34%)	DCC
Wilson B-factor (Å <sup>2</sup> )	10.6	Xtriage
Anisotropy	0.037	Xtriage
Bulk solvent $k_{sol}$ (e/Å <sup>3</sup> ), $B_{sol}$ (Å <sup>2</sup> )	0.44 , 56.7	EDS
Estimated twinning fraction	No twinning to report.	Xtriage
L-test for twinning	$\langle  L  \rangle = 0.49$ , $\langle L^2 \rangle = 0.32$	Xtriage
Outliers	0 of 94563 reflections	Xtriage
$F_o, F_c$ correlation	0.96	EDS
Total number of atoms	3922	wwPDB-VP
Average B, all atoms (Å <sup>2</sup> )	17.0	wwPDB-VP

Xtriage's analysis on translational NCS is as follows: *The analyses of the Patterson function reveals a significant off-origin peak that is 35.04 % of the origin peak, indicating pseudo translational symmetry. The chance of finding a peak of this or larger height randomly in a structure without pseudo translational symmetry is equal to 6.2108e-04. The detected translational NCS is most likely also responsible for the elevated intensity ratio.*

<sup>1</sup>Intensities estimated from amplitudes.

## 5 Model quality i

### 5.1 Standard geometry i

Bond lengths and bond angles in the following residue types are not validated in this section: MG, TPS, POP

The Z score for a bond length (or angle) is the number of standard deviations the observed value is removed from the expected value. A bond length (or angle) with  $|Z| > 5$  is considered an outlier worth inspection. RMSZ is the root-mean-square of all Z scores of the bond lengths (or angles).

Mol	Chain	Bond lengths		Bond angles	
		RMSZ	# Z  >5	RMSZ	# Z  >5
1	A	0.64	0/1762	1.35	19/2370 (0.8%)
1	B	0.60	0/1746	1.35	15/2352 (0.6%)
All	All	0.62	0/3508	1.35	34/4722 (0.7%)

There are no bond length outliers.

All (34) bond angle outliers are listed below:

Mol	Chain	Res	Type	Atoms	Z	Observed(°)	Ideal(°)
1	B	19	ARG	CD-NE-CZ	14.62	144.06	123.60
1	A	175	ARG	NE-CZ-NH1	13.47	127.04	120.30
1	B	175	ARG	NE-CZ-NH1	11.05	125.83	120.30
1	B	19	ARG	NE-CZ-NH1	10.95	125.78	120.30
1	B	59	ARG	NE-CZ-NH2	-10.88	114.86	120.30
1	B	71	ARG	NE-CZ-NH2	-10.38	115.11	120.30
1	A	175	ARG	NE-CZ-NH2	-9.55	115.52	120.30
1	B	175	ARG	NE-CZ-NH2	-8.93	115.83	120.30
1	B	71	ARG	NE-CZ-NH1	8.85	124.73	120.30
1	A	216	ASP	CB-CG-OD1	8.54	125.99	118.30
1	A	13	ARG	NE-CZ-NH2	-8.21	116.19	120.30
1	A	13	ARG	NE-CZ-NH1	7.87	124.24	120.30
1	B	13[A]	ARG	NE-CZ-NH1	7.68	124.14	120.30
1	B	13[B]	ARG	NE-CZ-NH1	7.68	124.14	120.30
1	A	107	HIS	CG-ND1-CE1	7.59	118.82	108.20
1	A	71	ARG	NE-CZ-NH1	7.58	124.09	120.30
1	A	58	PHE	CB-CG-CD1	-7.31	115.68	120.80
1	B	119	ARG	CD-NE-CZ	7.23	133.72	123.60
1	A	29	TYR	CB-CG-CD1	7.16	125.30	121.00
1	A	222[A]	ARG	NE-CZ-NH1	6.41	123.51	120.30
1	A	222[B]	ARG	NE-CZ-NH1	6.41	123.51	120.30
1	A	154	TYR	CB-CG-CD1	6.04	124.62	121.00

*Continued on next page...*



*Continued from previous page...*

Mol	Chain	Res	Type	Atoms	Z	Observed(°)	Ideal(°)
1	B	13[A]	ARG	NE-CZ-NH2	-5.89	117.36	120.30
1	B	13[B]	ARG	NE-CZ-NH2	-5.89	117.36	120.30
1	B	59	ARG	NE-CZ-NH1	5.88	123.24	120.30
1	A	58	PHE	CB-CG-CD2	5.59	124.72	120.80
1	A	222[A]	ARG	NE-CZ-NH2	-5.56	117.52	120.30
1	A	222[B]	ARG	NE-CZ-NH2	-5.56	117.52	120.30
1	B	154	TYR	CB-CG-CD2	5.45	124.27	121.00
1	A	83	ARG	NE-CZ-NH1	5.29	122.94	120.30
1	B	29	TYR	CB-CG-CD1	5.24	124.14	121.00
1	A	89	PHE	CB-CG-CD2	-5.22	117.15	120.80
1	A	203	ASP	CB-CG-OD2	-5.14	113.68	118.30
1	A	74	PHE	CB-CG-CD2	-5.08	117.24	120.80

There are no chirality outliers.

There are no planarity outliers.

## 5.2 Close contacts ⓘ

In the following table, the Non-H and H(model) columns list the number of non-hydrogen atoms and hydrogen atoms in the chain respectively. The H(added) column lists the number of hydrogens added by MolProbity. The Clashes column lists the number of clashes within the asymmetric unit, and the number in parentheses is this value normalized per 1000 atoms of the molecule in the chain. The Symm-Clashes column gives symmetry related clashes, in the same way as for the Clashes column.

Mol	Chain	Non-H	H(model)	H(added)	Clashes	Symm-Clashes
1	A	1713	0	0	5	0
1	B	1701	0	0	8	0
2	A	1	0	0	0	0
2	B	1	0	0	0	0
3	A	22	0	0	0	0
3	B	22	0	0	0	0
4	A	9	0	0	0	0
4	B	9	0	0	0	0
5	A	225	0	0	1	0
5	B	219	0	0	6	0
All	All	3922	0	0	13	0

Clashscore is defined as the number of clashes calculated for the entry per 1000 atoms (including hydrogens) of the entry. The overall clashscore for this entry is 4.

All (13) close contacts within the same asymmetric unit are listed below.

Atom-1	Atom-2	Distance(Å)	Clash(Å)
1:A:62:GLY:O	1:A:63:GLY:C	2.54	0.46
1:A:64:ASP:O	1:A:64:ASP:CG	2.55	0.45
1:B:71:ARG:NH2	5:B:3293:HOH:O	2.49	0.45
1:B:77:LYS:NZ	5:B:3116:HOH:O	2.50	0.45
1:B:64:ASP:N	1:B:64:ASP:OD1	2.50	0.45
1:B:77:LYS:NZ	5:B:3172:HOH:O	2.50	0.45
1:A:138:LYS:NZ	1:A:177:GLN:OE1	2.50	0.44
1:B:139:GLN:NE2	5:B:3320:HOH:O	2.50	0.44
1:A:222[B]:ARG:NH2	5:A:3337:HOH:O	2.50	0.43
1:B:161:ASP:N	1:B:161:ASP:OD2	2.51	0.43
1:B:19:ARG:NH1	5:B:3038:HOH:O	2.52	0.42
1:A:62:GLY:O	1:A:63:GLY:O	2.38	0.42
1:B:47:LYS:NZ	5:B:3193:HOH:O	2.53	0.41

There are no symmetry-related clashes.

## 5.3 Torsion angles

### 5.3.1 Protein backbone ⓘ

In the following table, the Percentiles column shows the percent Ramachandran outliers of the chain as a percentile score with respect to all X-ray entries followed by that with respect to entries of similar resolution. The Analysed column shows the number of residues for which the backbone conformation was analysed, and the total number of residues.

Mol	Chain	Analysed	Favoured	Allowed	Outliers	Percentiles	
1	A	230/227 (101%)	223 (97%)	6 (3%)	1 (0%)	43	11
1	B	230/227 (101%)	225 (98%)	5 (2%)	0	100	100
All	All	460/454 (101%)	448 (97%)	11 (2%)	1 (0%)	56	20

All (1) Ramachandran outliers are listed below:

Mol	Chain	Res	Type
1	A	63	GLY

### 5.3.2 Protein sidechains ⓘ

In the following table, the Percentiles column shows the percent sidechain outliers of the chain as a percentile score with respect to all X-ray entries followed by that with respect to entries of similar resolution. The Analysed column shows the number of residues for which the sidechain conformation was analysed, and the total number of residues.

Mol	Chain	Analysed	Rotameric	Outliers	Percentiles	
1	A	180/175 (103%)	174 (97%)	6 (3%)	50	9
1	B	179/175 (102%)	172 (96%)	7 (4%)	43	6
All	All	359/350 (103%)	346 (96%)	13 (4%)	45	8

All (13) residues with a non-rotameric sidechain are listed below:

Mol	Chain	Res	Type
1	A	29	TYR
1	A	64	ASP
1	A	111	GLU
1	A	142	GLU
1	A	160	LYS
1	A	235	ARG
1	B	12	ILE
1	B	19	ARG
1	B	29	TYR
1	B	157	GLU
1	B	160	LYS
1	B	161	ASP
1	B	162	THR

Some sidechains can be flipped to improve hydrogen bonding and reduce clashes. There are no such sidechains identified.

### 5.3.3 RNA ⓘ

There are no RNA chains in this entry.

## 5.4 Non-standard residues in protein, DNA, RNA chains ⓘ

There are no non-standard protein/DNA/RNA residues in this entry.

## 5.5 Carbohydrates ⓘ

There are no carbohydrates in this entry.

## 5.6 Ligand geometry ⓘ

Of 6 ligands modelled in this entry, 2 are monoatomic - leaving 4 for Mogul analysis.

In the following table, the Counts columns list the number of bonds (or angles) for which Mogul statistics could be retrieved, the number of bonds (or angles) that are observed in the model and the number of bonds (or angles) that are defined in the chemical component dictionary. The Link column lists molecule types, if any, to which the group is linked. The Z score for a bond length (or angle) is the number of standard deviations the observed value is removed from the expected value. A bond length (or angle) with  $|Z| > 2$  is considered an outlier worth inspection. RMSZ is the root-mean-square of all Z scores of the bond lengths (or angles).

Mol	Type	Chain	Res	Link	Bond lengths			Bond angles		
					Counts	RMSZ	$\# Z  > 2$	Counts	RMSZ	$\# Z  > 2$
3	TPS	A	2001	-	23,23,23	1.09	2 (8%)	33,33,33	1.45	4 (12%)
4	POP	A	2003	2	8,8,8	1.24	0	13,13,13	0.65	0
3	TPS	B	2002	-	23,23,23	1.44	4 (17%)	33,33,33	1.75	8 (24%)
4	POP	B	2004	2	8,8,8	1.14	1 (12%)	13,13,13	0.97	0

In the following table, the Chirals column lists the number of chiral outliers, the number of chiral centers analysed, the number of these observed in the model and the number defined in the chemical component dictionary. Similar counts are reported in the Torsion and Rings columns. '-' means no outliers of that kind were identified.

Mol	Type	Chain	Res	Link	Chirals	Torsions	Rings
3	TPS	A	2001	-	-	0/11/11/11	0/2/2/2
4	POP	A	2003	2	-	0/6/6/6	0/0/0/0
3	TPS	B	2002	-	-	0/11/11/11	0/2/2/2
4	POP	B	2004	2	-	0/6/6/6	0/0/0/0

All (7) bond length outliers are listed below:

Mol	Chain	Res	Type	Atoms	Z	Observed(Å)	Ideal(Å)
3	B	2002	TPS	C4-N3	-3.83	1.35	1.39
3	B	2002	TPS	C7A-N3	3.44	1.55	1.48
3	B	2002	TPS	C2A-N3A	-2.54	1.28	1.34
3	A	2001	TPS	C7A-N3	2.43	1.53	1.48
3	A	2001	TPS	C2A-N3A	-2.21	1.29	1.34
3	B	2002	TPS	C5-S1	2.16	1.75	1.73
4	B	2004	POP	P2-O5	-2.15	1.46	1.55

All (12) bond angle outliers are listed below:

Mol	Chain	Res	Type	Atoms	Z	Observed(°)	Ideal(°)
3	B	2002	TPS	C7-C6-C5	5.00	125.91	112.48
3	A	2001	TPS	C5-C4-N3	3.63	114.90	107.53
3	A	2001	TPS	CM4-C4-N3	-3.31	118.22	122.53
3	A	2001	TPS	P1-O7-C7	3.09	127.13	118.19

*Continued on next page...*

*Continued from previous page...*

Mol	Chain	Res	Type	Atoms	Z	Observed(°)	Ideal(°)
3	B	2002	TPS	C5-C4-N3	3.04	113.71	107.53
3	B	2002	TPS	CM4-C4-N3	-2.81	118.88	122.53
3	B	2002	TPS	C2-S1-C5	-2.67	89.84	91.63
3	B	2002	TPS	C5A-C7A-N3	-2.43	109.12	113.28
3	B	2002	TPS	C7A-N3-C2	-2.34	120.08	125.05
3	B	2002	TPS	N1A-C2A-N3A	-2.31	121.47	125.65
3	B	2002	TPS	O3-P1-O7	2.10	112.45	106.65
3	A	2001	TPS	C2-S1-C5	-2.03	90.27	91.63

There are no chirality outliers.

There are no torsion outliers.

There are no ring outliers.

## 5.7 Other polymers ⓘ

There are no such residues in this entry.

## 5.8 Polymer linkage issues

There are no chain breaks in this entry.

## 6 Fit of model and data ⓘ

### 6.1 Protein, DNA and RNA chains ⓘ

In the following table, the column labelled ‘#RSRZ> 2’ contains the number (and percentage) of RSRZ outliers, followed by percent RSRZ outliers for the chain as percentile scores relative to all X-ray entries and entries of similar resolution. The OWAB column contains the minimum, median, 95<sup>th</sup> percentile and maximum values of the occupancy-weighted average B-factor per residue. The column labelled ‘Q< 0.9’ lists the number of (and percentage) of residues with an average occupancy less than 0.9.

Mol	Chain	Analysed	<RSRZ>	#RSRZ>2	OWAB(Å <sup>2</sup> )	Q<0.9
1	A	226/227 (99%)	0.04	6 (2%) 52 53	7, 13, 33, 52	0
1	B	227/227 (100%)	0.03	7 (3%) 47 47	7, 13, 33, 58	0
All	All	453/454 (99%)	0.03	13 (2%) 50 50	7, 13, 33, 58	0

All (13) RSRZ outliers are listed below:

Mol	Chain	Res	Type	RSRZ
1	B	161	ASP	5.0
1	A	63	GLY	4.9
1	B	235	ARG	4.6
1	B	63	GLY	4.5
1	B	160	LYS	4.5
1	A	64	ASP	3.8
1	B	157	GLU	3.4
1	A	160	LYS	2.7
1	B	156	THR	2.2
1	A	231	TYR	2.2
1	A	179	ILE	2.1
1	B	111	GLU	2.1
1	A	161	ASP	2.0

### 6.2 Non-standard residues in protein, DNA, RNA chains ⓘ

There are no non-standard protein/DNA/RNA residues in this entry.

### 6.3 Carbohydrates ⓘ

There are no carbohydrates in this entry.

## 6.4 Ligands

In the following table, the Atoms column lists the number of modelled atoms in the group and the number defined in the chemical component dictionary. LLDF column lists the quality of electron density of the group with respect to its neighbouring residues in protein, DNA or RNA chains. The B-factors column lists the minimum, median, 95<sup>th</sup> percentile and maximum values of B factors of atoms in the group. The column labelled 'Q< 0.9' lists the number of atoms with occupancy less than 0.9.

Mol	Type	Chain	Res	Atoms	RSR	LLDF	B-factors(Å <sup>2</sup> )	Q<0.9
3	TPS	B	2002	22/22	0.08	0.10	8,11,14,15	22
4	POP	B	2004	9/9	0.06	-0.82	8,9,12,12	9
4	POP	A	2003	9/9	0.05	-0.99	8,9,10,10	9
2	MG	B	2006	1/1	0.06	-1.03	10,10,10,10	1
3	TPS	A	2001	22/22	0.05	-1.52	7,10,11,13	0
2	MG	A	2005	1/1	0.05	-2.99	8,8,8,8	1

## 6.5 Other polymers

There are no such residues in this entry.