



# Full wwPDB X-ray Structure Validation Report

Feb 28, 2014 – 03:26 AM GMT

PDB ID : 1TQW  
Title : Golgi alpha-Mannosidase II In Complex With A Diastereomer of Seleno-Salacinol  
Authors : Kuntz, D.A.; Ghavami, A.; Johnston, B.D.; Pinto, B.M.; Rose, D.R.  
Deposited on : 2004-06-18  
Resolution : 1.20 Å(reported)

This is a full wwPDB validation report for a publicly released PDB entry.  
We welcome your comments at [validation@mail.wwpdb.org](mailto:validation@mail.wwpdb.org)  
A user guide is available at <http://wwpdb.org/ValidationPDFNotes.html>

---

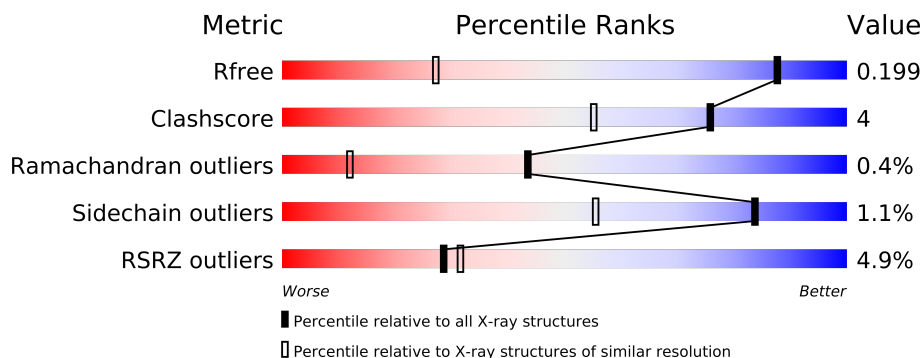
The following versions of software and data (see [references](#)) were used in the production of this report:

MolProbity : 4.02b-467  
Mogul : 1.15 2013  
Xtriage (Phenix) : dev-1323  
EDS : stable22639  
Percentile statistics : 21963  
Refmac : 5.8.0049  
CCP4 : 6.3.0 (Settle)  
Ideal geometry (proteins) : Engh & Huber (2001)  
Ideal geometry (DNA, RNA) : Parkinson et. al. (1996)  
Validation Pipeline (wwPDB-VP) : stable22683

# 1 Overall quality at a glance


The reported resolution of this entry is 1.20 Å.

Percentile scores (ranging between 0-100) for global validation metrics of the entry are shown in the following graphic. The table shows the number of entries on which the scores are based.



Metric	Whole archive (#Entries)	Similar resolution (#Entries, resolution range(Å))
$R_{free}$	66092	1038 (1.26-1.14)
Clashscore	79885	1158 (1.26-1.14)
Ramachandran outliers	78287	1106 (1.26-1.14)
Sidechain outliers	78261	1104 (1.26-1.14)
RSRZ outliers	66119	1038 (1.26-1.14)

The table below summarises the geometric issues observed across the polymeric chains and their fit to the electron density. The red, orange, yellow and green segments on the lower bar indicate the fraction of residues that contain outliers for  $\geq 3$ , 2, 1 and 0 types of geometric quality criteria. The upper red bar (where present) indicates the fraction of residues that have poor fit to the electron density.

Mol	Chain	Length	Quality of chain
1	A	1045	

The following table lists non-polymeric compounds that are outliers for geometric or electron-density-fit criteria:

Mol	Type	Chain	Res	Geometry	Electron density
2	NAG	A	1046	-	X
4	BLT	A	1300	-	X
5	MRD	A	1200	-	X

## 2 Entry composition

There are 6 unique types of molecules in this entry. The entry contains 9432 atoms, of which 0 are hydrogen and 0 are deuterium.

In the tables below, the ZeroOcc column contains the number of atoms modelled with zero occupancy, the AltConf column contains the number of residues with at least one atom in alternate conformation and the Trace column contains the number of residues modelled with at most 2 atoms.

- Molecule 1 is a protein called Alpha-mannosidase II.

Mol	Chain	Residues	Atoms					ZeroOcc	AltConf	Trace
1	A	1014	Total	C	N	O	S	0	31	0
			8290	5268	1456	1523	43			

There are 13 discrepancies between the modelled and reference sequences:

Chain	Residue	Modelled	Actual	Comment	Reference
A	1	ARG	-	EXPRESSION TAG	UNP Q24451
A	2	SER	-	EXPRESSION TAG	UNP Q24451
A	3	SER	-	EXPRESSION TAG	UNP Q24451
A	4	HIS	-	EXPRESSION TAG	UNP Q24451
A	5	HIS	-	EXPRESSION TAG	UNP Q24451
A	6	HIS	-	EXPRESSION TAG	UNP Q24451
A	7	HIS	-	EXPRESSION TAG	UNP Q24451
A	8	HIS	-	EXPRESSION TAG	UNP Q24451
A	9	HIS	-	EXPRESSION TAG	UNP Q24451
A	10	GLY	-	EXPRESSION TAG	UNP Q24451
A	11	GLU	-	EXPRESSION TAG	UNP Q24451
A	12	PHE	-	EXPRESSION TAG	UNP Q24451
A	907	LYS	GLU	SEE REMARK 999	UNP Q24451

- Molecule 2 is SUGAR (N-ACETYL-D-GLUCOSAMINE) (three-letter code: NAG) (formula:  $C_8H_{15}NO_6$ ).

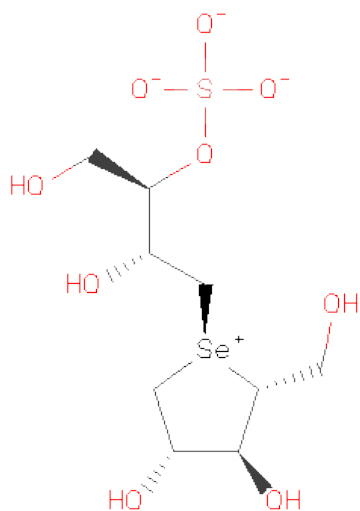


Mol	Chain	Residues	Atoms				ZeroOcc	AltConf
2	A	1	Total	C	N	O	0	0
			14	8	1	5		

- Molecule 3 is ZINC ION (three-letter code: ZN) (formula: Zn).

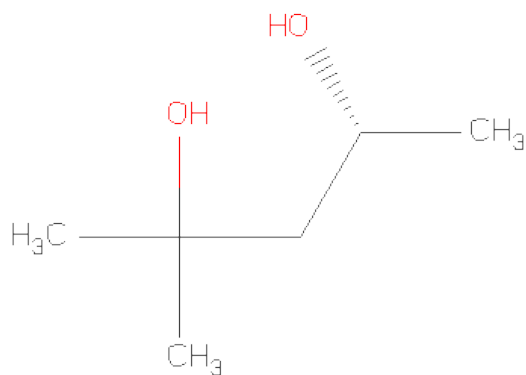
Mol	Chain	Residues	Atoms		ZeroOcc	AltConf
3	A	1	Total	Zn	0	0
			1	1		

- Molecule 4 is 1,4-DIDEOXY-1,4-[[2R,3R)-2,4-DIHYDROXY-3-(SULFOXY)BUTYL]EPISELENONIUMYLIDENE]-D-ARABINITOLINNER SALT (three-letter code: BLT) (formula: C<sub>9</sub>H<sub>18</sub>O<sub>9</sub>SSe).



Mol	Chain	Residues	Atoms					ZeroOcc	AltConf
4	A	1	Total	C	O	S	Se	0	0
			20	9	9	1	1		

- Molecule 5 is (4R)-2-METHYLPENTANE-2,4-DIOL (three-letter code: MRD) (formula: C<sub>6</sub>H<sub>14</sub>O<sub>2</sub>).



Mol	Chain	Residues	Atoms			ZeroOcc	AltConf
5	A	1	Total	C	O	0	0
			8	6	2		
5	A	1	Total	C	O	0	0
			8	6	2		

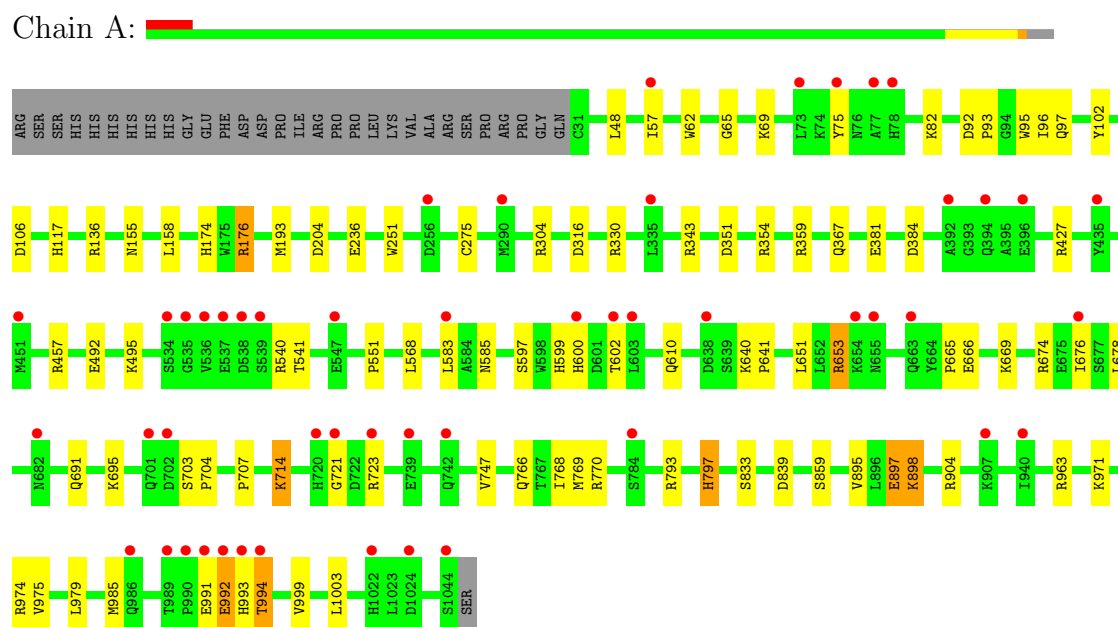
- Molecule 6 is water.

Mol	Chain	Residues	Atoms		ZeroOcc	AltConf
6	A	1091	Total	O	0	0
			1091	1091		

### 3 Residue-property plots

These plots are drawn for all protein, RNA and DNA chains in the entry. The first graphic for a chain summarises the proportions of errors displayed in the second graphic. The second graphic shows the sequence view annotated by issues in geometry and electron density. Residues are color-coded according to the number of geometric quality criteria for which they contain at least one outlier: green = 0, yellow = 1, orange = 2 and red = 3 or more. A red dot above a residue indicates a poor fit to the electron density ( $RSRZ > 2$ ). Stretches of 2 or more consecutive residues without any outlier are shown as a green connector. Residues present in the sample, but not in the model, are shown in grey.

- Molecule 1: Alpha-mannosidase II



## 4 Data and refinement statistics

Property	Value	Source
Space group	P 21 21 21	Depositor
Cell constants a, b, c, $\alpha$ , $\beta$ , $\gamma$	69.01Å 110.04Å 138.95Å 90.00° 90.00° 90.00°	Depositor
Resolution (Å)	29.37 – 1.20 29.86 – 1.20	Depositor EDS
% Data completeness (in resolution range)	95.9 (29.37-1.20) 96.1 (29.86-1.20)	Depositor EDS
$R_{merge}$	0.06	Depositor
$R_{sym}$	(Not available)	Depositor
$\langle I/\sigma(I) \rangle$ <sup>1</sup>	1.98 (at 1.20Å)	Xtriage
Refinement program	CNS 1.1	Depositor
R, $R_{free}$	0.175 , 0.184 0.194 , 0.199	Depositor DCC
$R_{free}$ test set	No test flags present.	DCC
Wilson B-factor (Å <sup>2</sup> )	8.7	Xtriage
Anisotropy	0.107	Xtriage
Bulk solvent $k_{sol}$ (e/Å <sup>3</sup> ), $B_{sol}$ (Å <sup>2</sup> )	0.37 , 35.8	EDS
Estimated twinning fraction	No twinning to report.	Xtriage
L-test for twinning	$\langle  L  \rangle = 0.49$ , $\langle L^2 \rangle = 0.33$	Xtriage
Outliers	0 of 324633 reflections	Xtriage
$F_o, F_c$ correlation	0.97	EDS
Total number of atoms	9432	wwPDB-VP
Average B, all atoms (Å <sup>2</sup> )	12.0	wwPDB-VP

Xtriage's analysis on translational NCS is as follows: *The largest off-origin peak in the Patterson function is 4.33% of the height of the origin peak. No significant pseudotranslation is detected.*

<sup>1</sup>Intensities estimated from amplitudes.

## 5 Model quality i

### 5.1 Standard geometry i

Bond lengths and bond angles in the following residue types are not validated in this section: MRD, BLT, ZN, NAG

The Z score for a bond length (or angle) is the number of standard deviations the observed value is removed from the expected value. A bond length (or angle) with  $|Z| > 5$  is considered an outlier worth inspection. RMSZ is the root-mean-square of all Z scores of the bond lengths (or angles).

Mol	Chain	Bond lengths		Bond angles	
		RMSZ	$\# Z  > 5$	RMSZ	$\# Z  > 5$
1	A	0.95	5/8673 (0.1%)	0.99	21/11769 (0.2%)

Chiral center outliers are detected by calculating the chiral volume of a chiral center and verifying if the center is modelled as a planar moiety or with the opposite hand. A planarity outlier is detected by checking planarity of atoms in a peptide group, atoms in a mainchain group or atoms of a sidechain that are expected to be planar.

Mol	Chain	#Chirality outliers	#Planarity outliers
1	A	0	2

All (5) bond length outliers are listed below:

Mol	Chain	Res	Type	Atoms	Z	Observed(Å)	Ideal(Å)
1	A	381	GLU	CD-OE1	-7.46	1.17	1.25
1	A	859	SER	CB-OG	-5.58	1.34	1.42
1	A	833	SER	CB-OG	-5.47	1.35	1.42
1	A	359	ARG	CZ-NH1	5.29	1.40	1.33
1	A	597	SER	CB-OG	-5.20	1.35	1.42

All (21) bond angle outliers are listed below:

Mol	Chain	Res	Type	Atoms	Z	Observed(°)	Ideal(°)
1	A	193[A]	MET	CG-SD-CE	-13.25	79.00	100.20
1	A	193[B]	MET	CG-SD-CE	-13.25	79.00	100.20
1	A	963	ARG	NE-CZ-NH2	-10.01	115.29	120.30
1	A	427	ARG	NE-CZ-NH2	-8.08	116.26	120.30
1	A	359	ARG	NE-CZ-NH2	-7.26	116.67	120.30
1	A	974	ARG	NE-CZ-NH2	-6.46	117.07	120.30
1	A	839	ASP	CB-CG-OD2	-6.39	112.55	118.30
1	A	793	ARG	NE-CZ-NH2	6.28	123.44	120.30

*Continued on next page...*



Continued from previous page...

Mol	Chain	Res	Type	Atoms	Z	Observed(°)	Ideal(°)
1	A	384	ASP	CB-CG-OD2	-6.25	112.67	118.30
1	A	974	ARG	NE-CZ-NH1	6.24	123.42	120.30
1	A	427	ARG	NE-CZ-NH1	6.17	123.38	120.30
1	A	540	ARG	NE-CZ-NH1	6.10	123.35	120.30
1	A	793	ARG	NE-CZ-NH1	-5.80	117.40	120.30
1	A	674	ARG	NE-CZ-NH2	-5.73	117.43	120.30
1	A	897	GLU	OE1-CD-OE2	5.63	130.06	123.30
1	A	457	ARG	NE-CZ-NH2	-5.61	117.50	120.30
1	A	330	ARG	NE-CZ-NH2	-5.31	117.65	120.30
1	A	665	PRO	N-CA-C	5.23	125.69	112.10
1	A	343	ARG	NE-CZ-NH2	-5.20	117.70	120.30
1	A	963	ARG	NE-CZ-NH1	5.16	122.88	120.30
1	A	176	ARG	NE-CZ-NH1	-5.12	117.74	120.30

There are no chirality outliers.

All (2) planarity outliers are listed below:

Mol	Chain	Res	Type	Group
1	A	102	TYR	Sidechain
1	A	797[B]	HIS	Mainchain

## 5.2 Close contacts ⓘ

In the following table, the Non-H and H(model) columns list the number of non-hydrogen atoms and hydrogen atoms in the chain respectively. The H(added) column lists the number of hydrogens added by MolProbity. The Clashes column lists the number of clashes within the asymmetric unit, and the number in parentheses is this value normalized per 1000 atoms of the molecule in the chain. The Symm-Clashes column gives symmetry related clashes, in the same way as for the Clashes column.

Mol	Chain	Non-H	H(model)	H(added)	Clashes	Symm-Clashes
1	A	8290	0	8088	62	2
2	A	14	0	13	0	0
3	A	1	0	0	0	0
4	A	20	0	12	0	0
5	A	16	0	28	3	0
6	A	1091	0	0	25	0
All	All	9432	0	8141	64	2

Clashscore is defined as the number of clashes calculated for the entry per 1000 atoms (including hydrogens) of the entry. The overall clashscore for this entry is 4.

All (64) close contacts within the same asymmetric unit are listed below.

Atom-1	Atom-2	Distance(Å)	Clash(Å)
1:A:117[B]:HIS:NE2	6:A:1493:HOH:O	2.00	0.94
1:A:117[B]:HIS:HE1	1:A:354:ARG:HE	1.12	0.91
1:A:75[B]:TYR:HD1	6:A:1524:HOH:O	1.59	0.86
1:A:117[B]:HIS:CE1	1:A:354:ARG:HE	1.93	0.85
1:A:991:GLU:O	1:A:992:GLU:HG3	1.77	0.84
1:A:714:LYS:HD2	6:A:2347:HOH:O	1.78	0.84
1:A:117[B]:HIS:CE1	6:A:1493:HOH:O	2.32	0.80
1:A:351:ASP:HA	6:A:1493:HOH:O	1.82	0.80
1:A:766[B]:GLN:NE2	6:A:1878:HOH:O	2.16	0.76
1:A:541:THR:HG23	6:A:2104:HOH:O	1.86	0.76
1:A:971[B]:LYS:HB2	1:A:971[B]:LYS:NZ	2.01	0.75
5:A:1100:MRD:H1C1	6:A:1634:HOH:O	1.86	0.74
1:A:992:GLU:HG2	6:A:2384:HOH:O	1.87	0.73
1:A:994:THR:HA	6:A:1938:HOH:O	1.86	0.73
1:A:599[A]:HIS:CD2	1:A:610:GLN:NE2	2.57	0.72
1:A:599[A]:HIS:CD2	1:A:610:GLN:HE21	2.08	0.71
1:A:117[B]:HIS:HE1	1:A:354:ARG:NE	1.86	0.71
1:A:707:PRO:HG2	1:A:797[B]:HIS:CE1	2.26	0.71
1:A:979:LEU:HD21	1:A:999:VAL:HG11	1.73	0.70
1:A:82:LYS:HE3	6:A:1513:HOH:O	1.94	0.66
1:A:991:GLU:O	1:A:992:GLU:CG	2.44	0.66
5:A:1100:MRD:H1C3	6:A:1577:HOH:O	1.97	0.64
1:A:651:LEU:CD1	1:A:653:ARG:HG2	2.29	0.61
1:A:57[A]:ILE:HD11	6:A:1587:HOH:O	2.01	0.60
1:A:992:GLU:C	1:A:992:GLU:OE2	2.40	0.59
1:A:904:ARG:HG2	1:A:985:MET:SD	2.42	0.59
1:A:971[B]:LYS:HZ3	1:A:971[B]:LYS:HB2	1.65	0.58
1:A:136:ARG:HD3	6:A:1764:HOH:O	2.04	0.57
1:A:975:VAL:HG21	1:A:1003:LEU:CD1	2.35	0.56
1:A:678:LEU:HD12	1:A:769:MET:HE1	1.88	0.54
1:A:895:VAL:HG12	1:A:897:GLU:HG3	1.90	0.54
1:A:106:ASP:OD1	5:A:1200:MRD:HMC3	2.07	0.53
1:A:703:SER:HB2	1:A:704:PRO:CD	2.39	0.53
1:A:155:ASN:ND2	6:A:1442:HOH:O	2.43	0.52
1:A:251:TRP:C	1:A:251:TRP:CD1	2.83	0.51
1:A:62:TRP:CD2	1:A:65:GLY:HA3	2.47	0.49
1:A:568:LEU:HD12	1:A:770[B]:ARG:HD3	1.93	0.49
1:A:797[B]:HIS:HB2	6:A:1825:HOH:O	2.12	0.48
1:A:766[B]:GLN:HG2	1:A:768:ILE:HG13	1.96	0.47
1:A:602:THR:HG22	6:A:2467:HOH:O	2.15	0.47
1:A:600:HIS:C	1:A:600:HIS:CD2	2.87	0.46
1:A:551:PRO:HG2	6:A:2394:HOH:O	2.16	0.46

*Continued on next page...*

Continued from previous page...

Atom-1	Atom-2	Distance(Å)	Clash(Å)
1:A:174:HIS:CE1	1:A:176:ARG:HD3	2.50	0.46
1:A:651:LEU:HD12	1:A:653:ARG:HG2	1.98	0.46
1:A:69:LYS:HE2	6:A:1655:HOH:O	2.16	0.45
1:A:703:SER:HB2	1:A:704:PRO:HD2	1.99	0.44
1:A:640:LYS:HA	1:A:641:PRO:HD3	1.85	0.44
1:A:367:GLN:HG3	6:A:1691:HOH:O	2.18	0.43
1:A:669[A]:LYS:HG3	6:A:2461:HOH:O	2.18	0.42
1:A:492:GLU:OE1	1:A:495:LYS:NZ	2.44	0.42
1:A:797[B]:HIS:HB2	6:A:1826:HOH:O	2.18	0.42
1:A:48:LEU:HD11	1:A:236:GLU:HG2	2.01	0.42
1:A:75[B]:TYR:CD1	6:A:1524:HOH:O	2.45	0.41
1:A:75[B]:TYR:HE1	6:A:1525:HOH:O	2.02	0.41
1:A:676:ILE:HD13	1:A:747:VAL:HG21	2.01	0.41
1:A:640:LYS:HG3	6:A:2006:HOH:O	2.20	0.41
1:A:304[A]:ARG:NH1	1:A:304[A]:ARG:HG3	2.35	0.41
1:A:678:LEU:HD13	1:A:769:MET:HE3	2.03	0.41
1:A:721:GLY:O	1:A:723:ARG:HD2	2.21	0.41
1:A:304[A]:ARG:HG3	1:A:304[A]:ARG:HH11	1.86	0.41
1:A:96:ILE:HD12	1:A:97:GLN:HG3	2.03	0.41
1:A:92:ASP:HA	1:A:93:PRO:HD3	1.96	0.40
1:A:898:LYS:HA	1:A:898:LYS:HD2	1.83	0.40
1:A:583:LEU:HD12	1:A:583:LEU:HA	1.93	0.40

All (2) symmetry-related close contacts are listed below. The label for Atom-2 includes the symmetry operator and encoded unit-cell translations to be applied.

Atom-1	Atom-2	Distance(Å)	Clash(Å)
1:A:316:ASP:OD1	1:A:797[B]:HIS:ND1[2.565]	1.88	0.32
1:A:316:ASP:OD1	1:A:797[B]:HIS:CE1[2.565]	2.05	0.15

## 5.3 Torsion angles

### 5.3.1 Protein backbone ⓘ

In the following table, the Percentiles column shows the percent Ramachandran outliers of the chain as a percentile score with respect to all X-ray entries followed by that with respect to entries of similar resolution. The Analysed column shows the number of residues for which the backbone conformation was analysed, and the total number of residues.

Mol	Chain	Analysed	Favoured	Allowed	Outliers	Percentiles
1	A	1043/1045 (100%)	1017 (98%)	22 (2%)	4 (0%)	43 12

All (4) Ramachandran outliers are listed below:

Mol	Chain	Res	Type
1	A	993	HIS
1	A	994	THR
1	A	95	TRP
1	A	204	ASP

### 5.3.2 Protein sidechains ⓘ

In the following table, the Percentiles column shows the percent sidechain outliers of the chain as a percentile score with respect to all X-ray entries followed by that with respect to entries of similar resolution. The Analysed column shows the number of residues for which the sidechain conformation was analysed, and the total number of residues.

Mol	Chain	Analysed	Rotameric	Outliers	Percentiles	
1	A	932/929 (100%)	922 (99%)	10 (1%)	84	55

All (10) residues with a non-rotameric sidechain are listed below:

Mol	Chain	Res	Type
1	A	158	LEU
1	A	275	CYS
1	A	585	ASN
1	A	653	ARG
1	A	666	GLU
1	A	691	GLN
1	A	695	LYS
1	A	714	LYS
1	A	898	LYS
1	A	992	GLU

Some sidechains can be flipped to improve hydrogen bonding and reduce clashes. All (3) such sidechains are listed below:

Mol	Chain	Res	Type
1	A	600	HIS
1	A	610	GLN
1	A	919	HIS

### 5.3.3 RNA ⓘ

There are no RNA chains in this entry.

## 5.4 Non-standard residues in protein, DNA, RNA chains ⓘ

There are no non-standard protein/DNA/RNA residues in this entry.

## 5.5 Carbohydrates ⓘ

There are no carbohydrates in this entry.

## 5.6 Ligand geometry ⓘ

Of 5 ligands modelled in this entry, 1 is monoatomic - leaving 4 for Mogul analysis.

In the following table, the Counts columns list the number of bonds (or angles) for which Mogul statistics could be retrieved, the number of bonds (or angles) that are observed in the model and the number of bonds (or angles) that are defined in the chemical component dictionary. The Link column lists molecule types, if any, to which the group is linked. The Z score for a bond length (or angle) is the number of standard deviations the observed value is removed from the expected value. A bond length (or angle) with  $|Z| > 2$  is considered an outlier worth inspection. RMSZ is the root-mean-square of all Z scores of the bond lengths (or angles).

Mol	Type	Chain	Res	Link	Bond lengths			Bond angles		
					Counts	RMSZ	$\# Z  > 2$	Counts	RMSZ	$\# Z  > 2$
2	NAG	A	1046	1	12,14,15	0.56	0	15,19,21	1.06	2 (13%)
5	MRD	A	1100	-	7,7,7	0.72	0	10,10,10	0.54	0
5	MRD	A	1200	-	7,7,7	0.38	0	10,10,10	0.43	0
4	BLT	A	1300	3	19,20,20	1.70	3 (15%)	24,29,29	3.60	9 (37%)

In the following table, the Chirals column lists the number of chiral outliers, the number of chiral centers analysed, the number of these observed in the model and the number defined in the chemical component dictionary. Similar counts are reported in the Torsion and Rings columns. '-' means no outliers of that kind were identified.

Mol	Type	Chain	Res	Link	Chirals	Torsions	Rings
2	NAG	A	1046	1	-	0/6/23/26	0/1/1/1
5	MRD	A	1100	-	-	0/5/5/5	0/0/0/0
5	MRD	A	1200	-	-	0/5/5/5	0/0/0/0
4	BLT	A	1300	3	-	0/13/33/33	0/1/1/1

All (3) bond length outliers are listed below:

Mol	Chain	Res	Type	Atoms	Z	Observed(Å)	Ideal(Å)
4	A	1300	BLT	SE4-C7	-3.77	1.85	1.97
4	A	1300	BLT	C6-C5	3.42	1.58	1.51

*Continued on next page...*

*Continued from previous page...*

Mol	Chain	Res	Type	Atoms	Z	Observed(Å)	Ideal(Å)
4	A	1300	BLT	C3-C2	3.31	1.56	1.51

All (11) bond angle outliers are listed below:

Mol	Chain	Res	Type	Atoms	Z	Observed(°)	Ideal(°)
4	A	1300	BLT	SE4-C5-C1	-13.89	99.44	104.01
4	A	1300	BLT	C9-O9-S9	5.40	126.12	118.31
4	A	1300	BLT	C7-SE4-C3	4.84	107.69	97.36
4	A	1300	BLT	O9-C9-C10	3.72	113.82	107.78
4	A	1300	BLT	C3-C2-C1	-3.54	103.90	107.24
4	A	1300	BLT	O13-S9-O12	-2.92	111.81	113.77
2	A	1046	NAG	C3-C2-N2	-2.53	107.91	111.76
4	A	1300	BLT	O12-S9-O11	-2.38	112.17	113.77
4	A	1300	BLT	O13-S9-O11	-2.33	112.20	113.77
2	A	1046	NAG	O5-C5-C4	2.19	113.44	110.65
4	A	1300	BLT	O6-C6-C5	-2.13	105.25	111.08

There are no chirality outliers.

There are no torsion outliers.

There are no ring outliers.

## 5.7 Other polymers ⓘ

There are no such residues in this entry.

## 5.8 Polymer linkage issues

There are no chain breaks in this entry.

## 6 Fit of model and data ⓘ

### 6.1 Protein, DNA and RNA chains ⓘ

In the following table, the column labelled ‘#RSRZ> 2’ contains the number (and percentage) of RSRZ outliers, followed by percent RSRZ outliers for the chain as percentile scores relative to all X-ray entries and entries of similar resolution. The OWAB column contains the minimum, median, 95<sup>th</sup> percentile and maximum values of the occupancy-weighted average B-factor per residue. The column labelled ‘Q< 0.9’ lists the number of (and percentage) of residues with an average occupancy less than 0.9.

Mol	Chain	Analysed	<RSRZ>	#RSRZ>2		OWAB(Å <sup>2</sup> )	Q<0.9
1	A	1014/1045 (97%)	0.21	50 (4%)	28 31	5, 10, 19, 57	1 (0%)

All (50) RSRZ outliers are listed below:

Mol	Chain	Res	Type	RSRZ
1	A	993	HIS	6.2
1	A	701	GLN	5.6
1	A	702	ASP	5.5
1	A	720	HIS	5.4
1	A	602	THR	5.3
1	A	78	HIS	5.1
1	A	603	LEU	4.6
1	A	600	HIS	4.3
1	A	534	SER	4.3
1	A	991	GLU	4.3
1	A	638	ASP	4.2
1	A	992	GLU	4.1
1	A	583	LEU	4.1
1	A	538	ASP	4.0
1	A	682	ASN	4.0
1	A	784	SER	3.8
1	A	990	PRO	3.7
1	A	435	TYR	3.6
1	A	396	GLU	3.4
1	A	290	MET	3.4
1	A	547	GLU	3.3
1	A	1024	ASP	3.3
1	A	721	GLY	3.1
1	A	742	GLN	3.0
1	A	940	ILE	3.0
1	A	536	VAL	2.9
1	A	1044	SER	2.9

*Continued on next page...*

*Continued from previous page...*

Mol	Chain	Res	Type	RSRZ
1	A	994	THR	2.9
1	A	451	MET	2.8
1	A	537	GLU	2.8
1	A	654	LYS	2.7
1	A	723	ARG	2.6
1	A	655	ASN	2.6
1	A	676	ILE	2.6
1	A	907	LYS	2.5
1	A	77	ALA	2.4
1	A	394	GLN	2.4
1	A	986	GLN	2.4
1	A	57[A]	ILE	2.3
1	A	739	GLU	2.3
1	A	75[A]	TYR	2.3
1	A	1022	HIS	2.3
1	A	335	LEU	2.3
1	A	535	GLY	2.2
1	A	539	SER	2.2
1	A	392	ALA	2.2
1	A	256	ASP	2.2
1	A	73	LEU	2.1
1	A	989	THR	2.0
1	A	663	GLN	2.0

## 6.2 Non-standard residues in protein, DNA, RNA chains ⓘ

There are no non-standard protein/DNA/RNA residues in this entry.

## 6.3 Carbohydrates ⓘ

There are no carbohydrates in this entry.

## 6.4 Ligands ⓘ

In the following table, the Atoms column lists the number of modelled atoms in the group and the number defined in the chemical component dictionary. LLDF column lists the quality of electron density of the group with respect to its neighbouring residues in protein, DNA or RNA chains. The B-factors column lists the minimum, median, 95<sup>th</sup> percentile and maximum values of B factors of atoms in the group. The column labelled 'Q< 0.9' lists the number of atoms with occupancy less than 0.9.



Mol	Type	Chain	Res	Atoms	RSR	LLDF	B-factors( $\text{\AA}^2$ )	Q<0.9
4	BLT	A	1300	20/20	0.18	14.13	6,16,21,21	0
5	MRD	A	1200	8/8	0.27	8.54	34,35,35,35	0
2	NAG	A	1046	14/15	0.30	6.11	52,60,60,60	0
5	MRD	A	1100	8/8	0.12	1.46	10,12,15,17	0
3	ZN	A	1400	1/1	0.03	-7.09	6,6,6,6	0

## 6.5 Other polymers ⓘ

There are no such residues in this entry.