



# Full wwPDB X-ray Structure Validation Report

Sep 25, 2014 – 06:29 AM EDT

PDB ID : 4TQC  
Title : The co-complex structure of the translation initiation factor eIF4E with the inhibitor 4EGI-1 reveals an allosteric mechanism for dissociating eIF4G  
Authors : Papadopoulos, E.; Jenni, S.; Wagner, G.  
Deposited on : 2014-06-10  
Resolution : 1.80 Å(reported)

This is a full wwPDB validation report for a publicly released PDB entry.  
We welcome your comments at [validation@mail.wwpdb.org](mailto:validation@mail.wwpdb.org)  
A user guide is available at <http://wwpdb.org/ValidationPDFNotes.html>

---

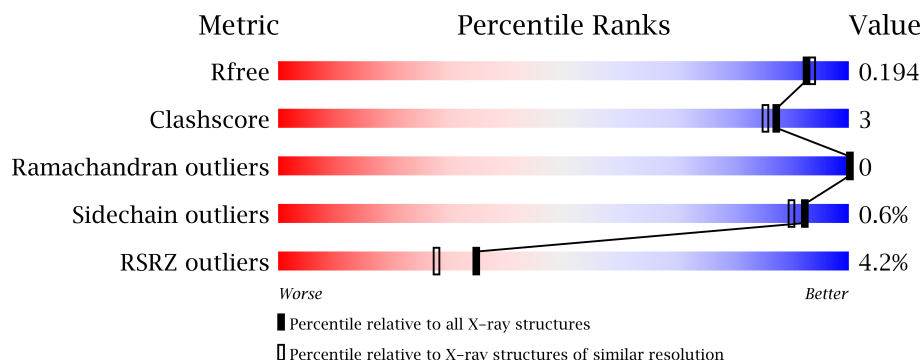
The following versions of software and data (see [references](#)) were used in the production of this report:

MolProbity : 4.02b-467  
Mogul : 1.16 November 2013  
Xtriage (Phenix) : dev-1439  
EDS : stable23489  
Percentile statistics : 21963  
Refmac : 5.8.0049  
CCP4 : 6.3.0 (Settle)  
Ideal geometry (proteins) : Engh & Huber (2001)  
Ideal geometry (DNA, RNA) : Parkinson et. al. (1996)  
Validation Pipeline (wwPDB-VP) : stable23489

# 1 Overall quality at a glance

The reported resolution of this entry is 1.80 Å.

Percentile scores (ranging between 0-100) for global validation metrics of the entry are shown in the following graphic. The table shows the number of entries on which the scores are based.



Metric	Whole archive (#Entries)	Similar resolution (#Entries, resolution range(Å))
$R_{free}$	66092	3513 (1.80-1.80)
Clashscore	79885	4461 (1.80-1.80)
Ramachandran outliers	78287	4404 (1.80-1.80)
Sidechain outliers	78261	4403 (1.80-1.80)
RSRZ outliers	66119	3515 (1.80-1.80)

The table below summarises the geometric issues observed across the polymeric chains and their fit to the electron density. The red, orange, yellow and green segments on the lower bar indicate the fraction of residues that contain outliers for  $\geq 3$ , 2, 1 and 0 types of geometric quality criteria. The upper red bar (where present) indicates the fraction of residues that have poor fit to the electron density.

Mol	Chain	Length	Quality of chain
1	A	191	
1	B	191	

## 2 Entry composition i

There are 4 unique types of molecules in this entry. The entry contains 6370 atoms, of which 2932 are hydrogens and 0 are deuterium.

In the tables below, the ZeroOcc column contains the number of atoms modelled with zero occupancy, the AltConf column contains the number of residues with at least one atom in alternate conformation and the Trace column contains the number of residues modelled with at most 2 atoms.

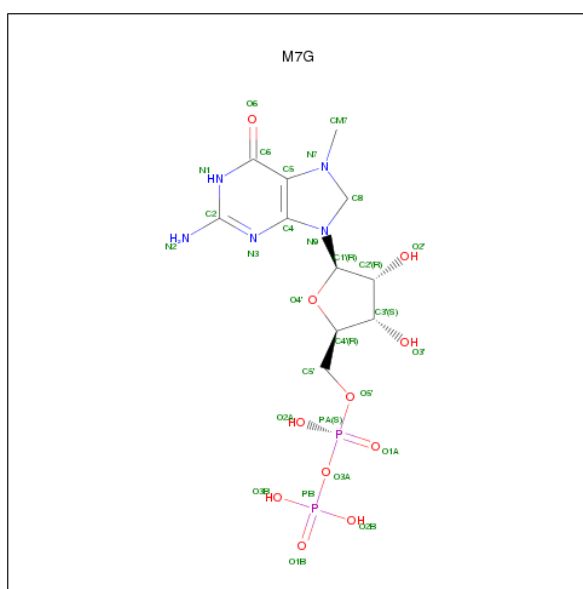
- Molecule 1 is a protein called Eukaryotic translation initiation factor 4E.

Mol	Chain	Residues	Atoms						ZeroOcc	AltConf	Trace
1	A	176	Total	C	H	N	O	S	0	0	0
			2893	932	1434	258	263	6			
1	B	179	Total	C	H	N	O	S	0	0	0
			2939	945	1458	262	268	6			

There are 2 discrepancies between the modelled and reference sequences:

Chain	Residue	Modelled	Actual	Comment	Reference
A	27	MET	-	initiating methionine	UNP P06730
B	27	MET	-	initiating methionine	UNP P06730

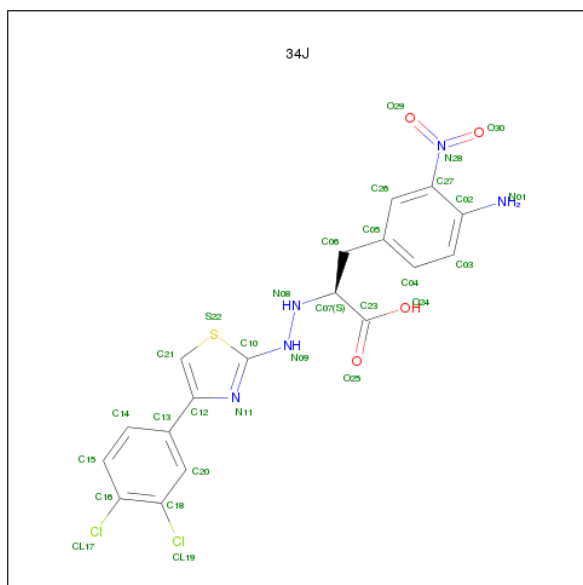
- Molecule 2 is 7N-METHYL-8-HYDROGUANOSINE-5'-DIPHOSPHATE (three-letter code: M7G) (formula:  $C_{11}H_{19}N_5O_{11}P_2$ ).



Continued from previous page...

Mol	Chain	Residues	Atoms					ZeroOcc	AltConf	
2	B	1	Total	C	H	N	O	P	0	0
			43	11	14	5	11	2		

- Molecule 3 is (2S)-3-(4-amino-3-nitrophenyl)-2-{2-[4-(3,4-dichlorophenyl)-1,3-thiazol-2-yl]hydrazinyl}propanoic acid (three-letter code: 34J) (formula:  $C_{18}H_{15}Cl_2N_5O_4S$ ).



Mol	Chain	Residues	Atoms							ZeroOcc	AltConf
3	A	1	Total	C	Cl	H	N	O	S	0	0
			42	18	2	12	5	4	1		

- Molecule 4 is water.

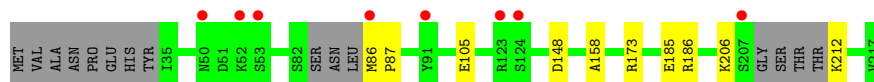
Mol	Chain	Residues	Atoms	ZeroOcc	AltConf
4	A	179	Total O 179 179	0	0
4	B	231	Total O 231 231	0	0

### 3 Residue-property plots

These plots are drawn for all protein, RNA and DNA chains in the entry. The first graphic for a chain summarises the proportions of errors displayed in the second graphic. The second graphic shows the sequence view annotated by issues in geometry and electron density. Residues are color-coded according to the number of geometric quality criteria for which they contain at least one outlier: green = 0, yellow = 1, orange = 2 and red = 3 or more. A red dot above a residue indicates a poor fit to the electron density ( $RSRZ > 2$ ). Stretches of 2 or more consecutive residues without any outlier are shown as a green connector. Residues present in the sample, but not in the model, are shown in grey.

- Molecule 1: Eukaryotic translation initiation factor 4E

Chain A: 



- Molecule 1: Eukaryotic translation initiation factor 4E

Chain B: 



## 4 Data and refinement statistics

Property	Value	Source
Space group	P 1 21 1	Depositor
Cell constants a, b, c, $\alpha$ , $\beta$ , $\gamma$	40.21Å 73.64Å 66.98Å 90.00° 74.92° 90.00°	Depositor
Resolution (Å)	19.50 – 1.80 19.55 – 1.80	Depositor EDS
% Data completeness (in resolution range)	93.9 (19.50-1.80) 93.9 (19.55-1.80)	Depositor EDS
$R_{merge}$	(Not available)	Depositor
$R_{sym}$	(Not available)	Depositor
$\langle I/\sigma(I) \rangle$ <sup>1</sup>	3.00 (at 1.80Å)	Xtriage
Refinement program	PHENIX (phenix.refine: 1.9_1692)	Depositor
R, $R_{free}$	0.161 , 0.194 0.161 , 0.194	Depositor DCC
$R_{free}$ test set	1432 reflections (4.38%)	DCC
Wilson B-factor (Å <sup>2</sup> )	23.7	Xtriage
Anisotropy	0.227	Xtriage
Bulk solvent $k_{sol}$ (e/Å <sup>3</sup> ), $B_{sol}$ (Å <sup>2</sup> )	0.42 , 48.9	EDS
Estimated twinning fraction	0.035 for h,-k,h-l	Xtriage
L-test for twinning	$\langle  L  \rangle = 0.48$ , $\langle L^2 \rangle = 0.31$	Xtriage
Outliers	1 of 32707 reflections (0.003%)	Xtriage
$F_o, F_c$ correlation	0.96	EDS
Total number of atoms	6370	wwPDB-VP
Average B, all atoms (Å <sup>2</sup> )	39.0	wwPDB-VP

Xtriage's analysis on translational NCS is as follows: *The largest off-origin peak in the Patterson function is 6.14% of the height of the origin peak. No significant pseudotranslation is detected.*

<sup>1</sup>Intensities estimated from amplitudes.

## 5 Model quality

### 5.1 Standard geometry

Bond lengths and bond angles in the following residue types are not validated in this section: M7G, 34J

The Z score for a bond length (or angle) is the number of standard deviations the observed value is removed from the expected value. A bond length (or angle) with  $|Z| > 5$  is considered an outlier worth inspection. RMSZ is the root-mean-square of all Z scores of the bond lengths (or angles).

Mol	Chain	Bond lengths		Bond angles	
		RMSZ	$\# Z  > 5$	RMSZ	$\# Z  > 5$
1	A	0.25	0/1494	0.44	0/2015
1	B	0.25	0/1517	0.43	0/2048
All	All	0.25	0/3011	0.43	0/4063

There are no bond length outliers.

There are no bond angle outliers.

There are no chirality outliers.

There are no planarity outliers.

### 5.2 Close contacts

In the following table, the Non-H and H(model) columns list the number of non-hydrogen atoms and hydrogen atoms in the chain respectively. The H(added) column lists the number of hydrogens added by MolProbity. The Clashes column lists the number of clashes within the asymmetric unit, and the number in parentheses is this value normalized per 1000 atoms of the molecule in the chain. The Symm-Clashes column gives symmetry related clashes, in the same way as for the Clashes column.

Mol	Chain	Non-H	H(model)	H(added)	Clashes	Symm-Clashes
1	A	1459	1434	0	9	0
1	B	1481	1458	0	5	0
2	A	29	14	2	0	0
2	B	29	14	2	0	0
3	A	30	12	0	1	0
4	A	179	0	0	9	2
4	B	231	0	0	4	1
All	All	3438	2932	4	15	2

Clashscore is defined as the number of clashes calculated for the entry per 1000 atoms (including

hydrogens) of the entry. The overall clashscore for this entry is 3.

All (15) close contacts within the same asymmetric unit are listed below.

Atom-1	Atom-2	Distance(Å)	Clash(Å)
1:A:186:ARG:NH2	4:A:568:HOH:O	1.93	1.00
1:B:171:GLU:OE2	4:B:1282:HOH:O	1.84	0.95
1:A:185:GLU:OE1	4:A:558:HOH:O	2.00	0.78
1:A:212:LYS:N	4:A:536:HOH:O	2.18	0.75
1:A:173:ARG:NH2	4:A:402:HOH:O	2.24	0.70
3:A:302:34J:S22	4:A:427:HOH:O	2.51	0.68
1:A:185:GLU:OE2	4:A:537:HOH:O	2.14	0.65
1:B:105:GLU:OE1	1:B:109:ARG:NH2	2.32	0.62
1:A:206:LYS:NZ	4:A:560:HOH:O	2.34	0.61
1:B:79:ILE:HD11	4:B:1243:HOH:O	2.01	0.59
1:A:158:ALA:N	4:A:403:HOH:O	2.25	0.56
1:B:64:SER:OG	4:B:1194:HOH:O	2.10	0.52
1:A:105:GLU:OE1	4:A:401:HOH:O	2.19	0.51
1:A:86:MET:N	1:A:87:PRO:CD	2.76	0.48
1:B:181:ARG:HD3	4:B:1310:HOH:O	2.13	0.47

All (2) symmetry-related close contacts are listed below. The label for Atom-2 includes the symmetry operator and encoded unit-cell translations to be applied.

Atom-1	Atom-2	Distance(Å)	Clash(Å)
4:A:447:HOH:O	4:A:539:HOH:O[2_655]	1.95	0.25
4:A:428:HOH:O	4:B:1141:HOH:O[1_554]	2.10	0.10

## 5.3 Torsion angles

### 5.3.1 Protein backbone ⓘ

In the following table, the Percentiles column shows the percent Ramachandran outliers of the chain as a percentile score with respect to all X-ray entries followed by that with respect to entries of similar resolution.

The Analysed column shows the number of residues for which the backbone conformation was analysed, and the total number of residues.

Mol	Chain	Analysed	Favoured	Allowed	Outliers	Percentiles	
1	A	170/191 (89%)	165 (97%)	5 (3%)	0	100	100
1	B	175/191 (92%)	171 (98%)	4 (2%)	0	100	100
All	All	345/382 (90%)	336 (97%)	9 (3%)	0	100	100



There are no Ramachandran outliers to report.

### 5.3.2 Protein sidechains ⓘ

In the following table, the Percentiles column shows the percent sidechain outliers of the chain as a percentile score with respect to all X-ray entries followed by that with respect to entries of similar resolution. The Analysed column shows the number of residues for which the sidechain conformation was analysed, and the total number of residues.

Mol	Chain	Analysed	Rotameric	Outliers	Percentiles	
1	A	157/170 (92%)	156 (99%)	1 (1%)	92	90
1	B	160/170 (94%)	159 (99%)	1 (1%)	92	90
All	All	317/340 (93%)	315 (99%)	2 (1%)	92	90

All (2) residues with a non-rotameric sidechain are listed below:

Mol	Chain	Res	Type
1	A	148	ASP
1	B	148	ASP

Some sidechains can be flipped to improve hydrogen bonding and reduce clashes. There are no such sidechains identified.

### 5.3.3 RNA ⓘ

There are no RNA chains in this entry.

## 5.4 Non-standard residues in protein, DNA, RNA chains ⓘ

There are no non-standard protein/DNA/RNA residues in this entry.

## 5.5 Carbohydrates ⓘ

There are no carbohydrates in this entry.

## 5.6 Ligand geometry ⓘ

3 ligands are modelled in this entry.

In the following table, the Counts columns list the number of bonds (or angles) for which Mogul statistics could be retrieved, the number of bonds (or angles) that are observed in the model and

the number of bonds (or angles) that are defined in the chemical component dictionary. The Link column lists molecule types, if any, to which the group is linked. The Z score for a bond length (or angle) is the number of standard deviations the observed value is removed from the expected value. A bond length (or angle) with  $|Z| > 2$  is considered an outlier worth inspection. RMSZ is the root-mean-square of all Z scores of the bond lengths (or angles).

Mol	Type	Chain	Res	Link	Bond lengths			Bond angles		
					Counts	RMSZ	# Z  > 2	Counts	RMSZ	# Z  > 2
2	M7G	A	301	-	31,31,31	5.11	14 (45%)	47,49,49	1.58	9 (19%)
3	34J	A	302	-	32,32,32	2.70	8 (25%)	41,45,45	2.44	11 (26%)
2	M7G	B	1000	-	31,31,31	5.11	14 (45%)	47,49,49	1.60	10 (21%)

In the following table, the Chirals column lists the number of chiral outliers, the number of chiral centers analysed, the number of these observed in the model and the number defined in the chemical component dictionary. Similar counts are reported in the Torsion and Rings columns. '-' means no outliers of that kind were identified.

Mol	Type	Chain	Res	Link	Chirals	Torsions	Rings
2	M7G	A	301	-	-	0/16/44/44	0/3/3/3
3	34J	A	302	-	-	0/19/21/21	0/3/3/3
2	M7G	B	1000	-	-	0/16/44/44	0/3/3/3

All (36) bond length outliers are listed below:

Mol	Chain	Res	Type	Atoms	Z	Observed(Å)	Ideal(Å)
2	B	1000	M7G	C8-N9	-17.92	1.32	1.46
2	A	301	M7G	C8-N9	-17.90	1.32	1.46
3	A	302	34J	C13-C12	-10.84	1.32	1.48
2	A	301	M7G	C2-N3	10.09	1.45	1.33
2	B	1000	M7G	C2-N3	10.05	1.45	1.33
2	B	1000	M7G	C2'-C3'	-9.34	1.27	1.53
2	A	301	M7G	C2'-C3'	-9.27	1.27	1.53
2	A	301	M7G	C4-N3	8.21	1.45	1.34
2	B	1000	M7G	C4-N3	8.15	1.45	1.34
2	A	301	M7G	C6-C5	6.73	1.50	1.41
2	B	1000	M7G	C6-C5	6.29	1.49	1.41
3	A	302	34J	C07-N08	-5.69	1.35	1.48
2	A	301	M7G	O4'-C4'	5.51	1.57	1.45
2	B	1000	M7G	O4'-C1'	-5.46	1.28	1.42
2	B	1000	M7G	O4'-C4'	5.41	1.57	1.45
2	A	301	M7G	O4'-C1'	-5.37	1.28	1.42
2	A	301	M7G	C2'-C1'	5.10	1.70	1.53
2	B	1000	M7G	C2'-C1'	5.09	1.70	1.53
3	A	302	34J	N09-N08	-5.04	1.31	1.40

*Continued on next page...*

*Continued from previous page...*

Mol	Chain	Res	Type	Atoms	Z	Observed(Å)	Ideal(Å)
2	A	301	M7G	C2-N2	4.77	1.39	1.32
2	B	1000	M7G	C2-N2	4.75	1.39	1.32
2	B	1000	M7G	C5'-C4'	-4.42	1.37	1.51
2	A	301	M7G	C5'-C4'	-4.35	1.37	1.51
2	B	1000	M7G	C2-N1	4.28	1.43	1.36
2	A	301	M7G	C2-N1	4.23	1.43	1.36
3	A	302	34J	C10-N09	4.04	1.51	1.35
2	B	1000	M7G	C1'-N9	-3.40	1.37	1.44
2	B	1000	M7G	O3'-C3'	3.40	1.51	1.43
2	B	1000	M7G	C6-N1	3.36	1.41	1.36
2	A	301	M7G	O3'-C3'	3.35	1.51	1.43
2	A	301	M7G	C1'-N9	-3.13	1.38	1.44
2	A	301	M7G	C6-N1	3.04	1.41	1.36
3	A	302	34J	O29-N28	2.90	1.29	1.22
3	A	302	34J	O25-C23	2.69	1.31	1.22
3	A	302	34J	C02-N01	2.33	1.45	1.38
3	A	302	34J	O30-N28	2.12	1.27	1.22

All (30) bond angle outliers are listed below:

Mol	Chain	Res	Type	Atoms	Z	Observed(°)	Ideal(°)
3	A	302	34J	C12-C21-S22	-5.90	105.09	111.97
3	A	302	34J	C21-C12-C13	-5.33	122.32	129.40
3	A	302	34J	C06-C07-N08	5.29	121.81	110.07
2	A	301	M7G	N7-C8-N9	5.28	110.15	103.13
3	A	302	34J	C07-N08-N09	5.26	123.71	112.17
2	B	1000	M7G	N7-C8-N9	5.03	109.81	103.13
3	A	302	34J	C27-C02-N01	-4.64	120.98	125.20
3	A	302	34J	C03-C02-C27	4.62	119.83	115.97
3	A	302	34J	C21-C12-N11	3.96	115.29	109.64
3	A	302	34J	C21-S22-C10	3.88	96.42	90.49
2	A	301	M7G	C5-C4-N3	-3.38	120.69	126.61
2	B	1000	M7G	C5-C4-N3	-3.37	120.71	126.61
2	B	1000	M7G	C3'-C2'-C1'	3.25	107.84	101.38
2	A	301	M7G	C3'-C2'-C1'	3.14	107.62	101.38
2	B	1000	M7G	N3-C4-N9	3.06	131.63	126.80
2	B	1000	M7G	C6-C5-C4	2.96	120.04	116.01
3	A	302	34J	C26-C27-C02	-2.96	119.80	121.67
2	A	301	M7G	N3-C4-N9	2.95	131.47	126.80
3	A	302	34J	C06-C07-C23	2.83	116.39	110.54
2	B	1000	M7G	N2-C2-N1	2.83	120.85	117.82
2	A	301	M7G	O3A-PA-O5'	2.82	110.39	102.91

*Continued on next page...*

*Continued from previous page...*

Mol	Chain	Res	Type	Atoms	Z	Observed(°)	Ideal(°)
3	A	302	34J	C23-C07-N08	2.74	118.70	109.66
2	B	1000	M7G	O3A-PA-O5'	2.61	109.82	102.91
2	A	301	M7G	N2-C2-N1	2.59	120.60	117.82
2	A	301	M7G	C6-C5-C4	2.51	119.42	116.01
2	B	1000	M7G	C8-N9-C1'	2.47	127.89	121.06
2	A	301	M7G	C8-N9-C1'	2.41	127.71	121.06
2	B	1000	M7G	C2'-C1'-N9	-2.40	109.11	114.61
2	A	301	M7G	C2'-C1'-N9	-2.36	109.18	114.61
2	B	1000	M7G	PA-O3A-PB	-2.02	126.34	131.93

There are no chirality outliers.

There are no torsion outliers.

There are no ring outliers.

## 5.7 Other polymers ⓘ

There are no such residues in this entry.

## 5.8 Polymer linkage issues

There are no chain breaks in this entry.

## 6 Fit of model and data

### 6.1 Protein, DNA and RNA chains

In the following table, the column labelled ‘#RSRZ> 2’ contains the number (and percentage) of RSRZ outliers, followed by percent RSRZ outliers for the chain as percentile scores relative to all X-ray entries and entries of similar resolution. The OWAB column contains the minimum, median, 95<sup>th</sup> percentile and maximum values of the occupancy-weighted average B-factor per residue. The column labelled ‘Q< 0.9’ lists the number of (and percentage) of residues with an average occupancy less than 0.9.

Mol	Chain	Analysed	<RSRZ>	#RSRZ>2		OWAB(Å <sup>2</sup> )	Q<0.9
1	A	176/191 (92%)	0.02	8 (4%)	32 25	17, 33, 65, 93	0
1	B	179/191 (93%)	-0.13	7 (3%)	37 30	16, 29, 61, 86	0
All	All	355/382 (92%)	-0.06	15 (4%)	35 28	16, 30, 64, 93	0

All (15) RSRZ outliers are listed below:

Mol	Chain	Res	Type	RSRZ
1	A	86	MET	6.2
1	A	123	ARG	5.5
1	B	35	ILE	3.5
1	A	53	SER	3.4
1	B	123	ARG	3.2
1	A	207	SER	3.2
1	B	86	MET	2.9
1	B	52	LYS	2.6
1	B	144	ASP	2.6
1	A	124	SER	2.5
1	A	50	ASN	2.2
1	A	52	LYS	2.1
1	B	53	SER	2.1
1	A	91	TYR	2.1
1	B	207	SER	2.0

### 6.2 Non-standard residues in protein, DNA, RNA chains

There are no non-standard protein/DNA/RNA residues in this entry.

### 6.3 Carbohydrates

There are no carbohydrates in this entry.

## 6.4 Ligands

In the following table, the Atoms column lists the number of modelled atoms in the group and the number defined in the chemical component dictionary. LLDF column lists the quality of electron density of the group with respect to its neighbouring residues in protein, DNA or RNA chains. The B-factors column lists the minimum, median, 95<sup>th</sup> percentile and maximum values of B factors of atoms in the group. The column labelled 'Q < 0.9' lists the number of atoms with occupancy less than 0.9.

Mol	Type	Chain	Res	Atoms	RSR	LLDF	B-factors(Å <sup>2</sup> )	Q<0.9
2	M7G	A	301	29/29	0.10	-0.11	27,41,60,76	0
3	34J	A	302	30/30	0.10	-0.26	39,48,60,65	0
2	M7G	B	1000	29/29	0.10	-0.32	23,42,70,84	0

## 6.5 Other polymers

There are no such residues in this entry.