



Full wwPDB X-ray Structure Validation Report

Feb 27, 2014 – 01:43 AM GMT

PDB ID : 1TX2
Title : Dihydropteroate Synthetase, With Bound Inhibitor MANIC, From Bacillus anthracis
Authors : Babaoglu, K.; Qi, J.; Lee, R.E.; White, S.W.
Deposited on : 2004-07-01
Resolution : 1.83 Å(reported)

This is a full wwPDB validation report for a publicly released PDB entry.
We welcome your comments at validation@mail.wwpdb.org
A user guide is available at <http://wwpdb.org/ValidationPDFNotes.html>

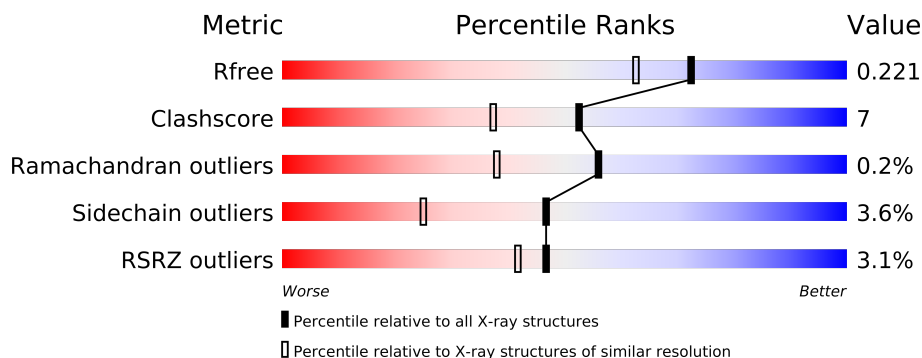
The following versions of software and data (see [references](#)) were used in the production of this report:

MolProbity : 4.02b-467
Mogul : 1.15 2013
Xtriage (Phenix) : dev-1323
EDS : stable22639
Percentile statistics : 21963
Refmac : 5.8.0049
CCP4 : 6.3.0 (Settle)
Ideal geometry (proteins) : Engh & Huber (2001)
Ideal geometry (DNA, RNA) : Parkinson et. al. (1996)
Validation Pipeline (wwPDB-VP) : stable22683

1 Overall quality at a glance

The reported resolution of this entry is 1.83 Å.

Percentile scores (ranging between 0-100) for global validation metrics of the entry are shown in the following graphic. The table shows the number of entries on which the scores are based.



Metric	Whole archive (#Entries)	Similar resolution (#Entries, resolution range(Å))
R_{free}	66092	1857 (1.86-1.82)
Clashscore	79885	2149 (1.86-1.82)
Ramachandran outliers	78287	2124 (1.86-1.82)
Sidechain outliers	78261	2125 (1.86-1.82)
RSRZ outliers	66119	1857 (1.86-1.82)

The table below summarises the geometric issues observed across the polymeric chains and their fit to the electron density. The red, orange, yellow and green segments on the lower bar indicate the fraction of residues that contain outliers for ≥ 3 , 2, 1 and 0 types of geometric quality criteria. The upper red bar (where present) indicates the fraction of residues that have poor fit to the electron density.

Mol	Chain	Length	Quality of chain
1	A	297	
1	B	297	

The following table lists non-polymeric compounds that are outliers for geometric or electron-density-fit criteria:

Mol	Type	Chain	Res	Geometry	Electron density
2	SO4	A	405	-	X
2	SO4	A	408	-	X
2	SO4	A	409	-	X
2	SO4	B	402	-	X
2	SO4	B	403	-	X
2	SO4	B	410	-	X

2 Entry composition

There are 4 unique types of molecules in this entry. The entry contains 4584 atoms, of which 0 are hydrogen and 0 are deuterium.

In the tables below, the ZeroOcc column contains the number of atoms modelled with zero occupancy, the AltConf column contains the number of residues with at least one atom in alternate conformation and the Trace column contains the number of residues modelled with at most 2 atoms.

- Molecule 1 is a protein called DHPS, Dihydropteroate synthase.

Mol	Chain	Residues	Atoms					ZeroOcc	AltConf	Trace
1	A	269	Total	C	N	O	S	0	0	0
			2087	1313	357	401	16			
1	B	261	Total	C	N	O	S	0	0	0
			2022	1271	348	387	16			

There are 40 discrepancies between the modelled and reference sequences:

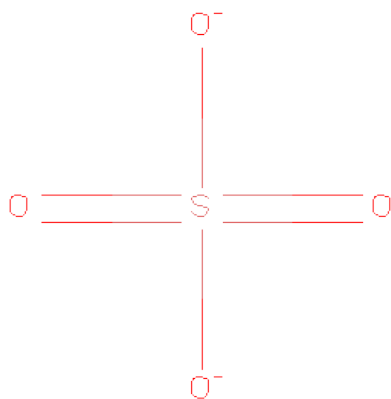
Chain	Residue	Modelled	Actual	Comment	Reference
A	-19	MET	-	EXPRESSION TAG	UNP Q81VW8
A	-18	GLY	-	EXPRESSION TAG	UNP Q81VW8
A	-17	SER	-	EXPRESSION TAG	UNP Q81VW8
A	-16	SER	-	EXPRESSION TAG	UNP Q81VW8
A	-15	HIS	-	EXPRESSION TAG	UNP Q81VW8
A	-14	HIS	-	EXPRESSION TAG	UNP Q81VW8
A	-13	HIS	-	EXPRESSION TAG	UNP Q81VW8
A	-12	HIS	-	EXPRESSION TAG	UNP Q81VW8
A	-11	HIS	-	EXPRESSION TAG	UNP Q81VW8
A	-10	HIS	-	EXPRESSION TAG	UNP Q81VW8
A	-9	SER	-	EXPRESSION TAG	UNP Q81VW8
A	-8	SER	-	EXPRESSION TAG	UNP Q81VW8
A	-7	GLY	-	EXPRESSION TAG	UNP Q81VW8
A	-6	LEU	-	EXPRESSION TAG	UNP Q81VW8
A	-5	VAL	-	EXPRESSION TAG	UNP Q81VW8
A	-4	PRO	-	EXPRESSION TAG	UNP Q81VW8
A	-3	ARG	-	EXPRESSION TAG	UNP Q81VW8
A	-2	GLY	-	EXPRESSION TAG	UNP Q81VW8
A	-1	SER	-	EXPRESSION TAG	UNP Q81VW8
A	0	HIS	-	EXPRESSION TAG	UNP Q81VW8
B	-19	MET	-	EXPRESSION TAG	UNP Q81VW8
B	-18	GLY	-	EXPRESSION TAG	UNP Q81VW8
B	-17	SER	-	EXPRESSION TAG	UNP Q81VW8
B	-16	SER	-	EXPRESSION TAG	UNP Q81VW8
B	-15	HIS	-	EXPRESSION TAG	UNP Q81VW8

Continued on next page...

Continued from previous page...

Chain	Residue	Modelled	Actual	Comment	Reference
B	-14	HIS	-	EXPRESSION TAG	UNP Q81VW8
B	-13	HIS	-	EXPRESSION TAG	UNP Q81VW8
B	-12	HIS	-	EXPRESSION TAG	UNP Q81VW8
B	-11	HIS	-	EXPRESSION TAG	UNP Q81VW8
B	-10	HIS	-	EXPRESSION TAG	UNP Q81VW8
B	-9	SER	-	EXPRESSION TAG	UNP Q81VW8
B	-8	SER	-	EXPRESSION TAG	UNP Q81VW8
B	-7	GLY	-	EXPRESSION TAG	UNP Q81VW8
B	-6	LEU	-	EXPRESSION TAG	UNP Q81VW8
B	-5	VAL	-	EXPRESSION TAG	UNP Q81VW8
B	-4	PRO	-	EXPRESSION TAG	UNP Q81VW8
B	-3	ARG	-	EXPRESSION TAG	UNP Q81VW8
B	-2	GLY	-	EXPRESSION TAG	UNP Q81VW8
B	-1	SER	-	EXPRESSION TAG	UNP Q81VW8
B	0	HIS	-	EXPRESSION TAG	UNP Q81VW8

- Molecule 2 is SULFATE ION (three-letter code: SO4) (formula: O₄S).



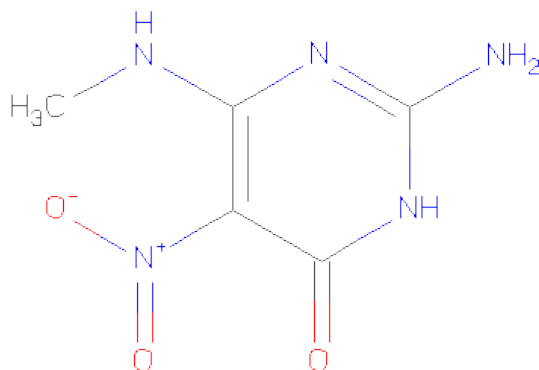
Mol	Chain	Residues	Atoms			ZeroOcc	AltConf
2	A	1	Total	O	S	0	0
			5	4	1		
2	B	1	Total	O	S	0	0
			5	4	1		
2	B	1	Total	O	S	0	0
			5	4	1		
2	A	1	Total	O	S	0	0
			5	4	1		

Continued on next page...

Continued from previous page...

Mol	Chain	Residues	Atoms			ZeroOcc	AltConf
2	A	1	Total	O	S	0	0
			5	4	1		
2	B	1	Total	O	S	0	0
			5	4	1		
2	B	1	Total	O	S	0	0
			5	4	1		
2	A	1	Total	O	S	0	0
			5	4	1		
2	A	1	Total	O	S	0	0
			5	4	1		
2	B	1	Total	O	S	0	0
			5	4	1		

- Molecule 3 is 6-METHYLAMINO-5-NITROISOCYTOSINE (three-letter code: 680) (formula: C₅H₇N₅O₃).



Mol	Chain	Residues	Atoms				ZeroOcc	AltConf
3	B	1	Total	C	N	O	0	0
			13	5	5	3		
3	A	1	Total	C	N	O	0	0
			13	5	5	3		

- Molecule 4 is water.

Mol	Chain	Residues	Atoms		ZeroOcc	AltConf
4	A	211	Total	O	0	0
			211	211		

Continued on next page...

Continued from previous page...

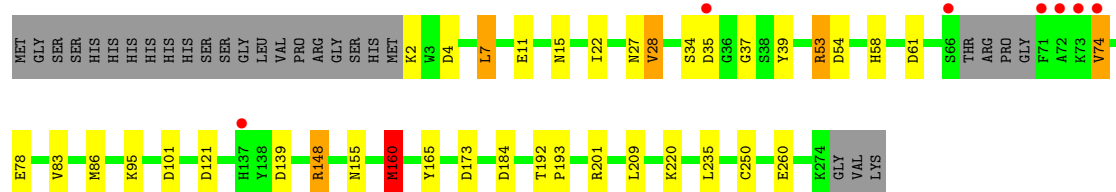
Mol	Chain	Residues	Atoms		ZeroOcc	AltConf
4	B	188	Total 188	O 188	0	0

3 Residue-property plots

These plots are drawn for all protein, RNA and DNA chains in the entry. The first graphic for a chain summarises the proportions of errors displayed in the second graphic. The second graphic shows the sequence view annotated by issues in geometry and electron density. Residues are color-coded according to the number of geometric quality criteria for which they contain at least one outlier: green = 0, yellow = 1, orange = 2 and red = 3 or more. A red dot above a residue indicates a poor fit to the electron density ($RSRZ > 2$). Stretches of 2 or more consecutive residues without any outlier are shown as a green connector. Residues present in the sample, but not in the model, are shown in grey.

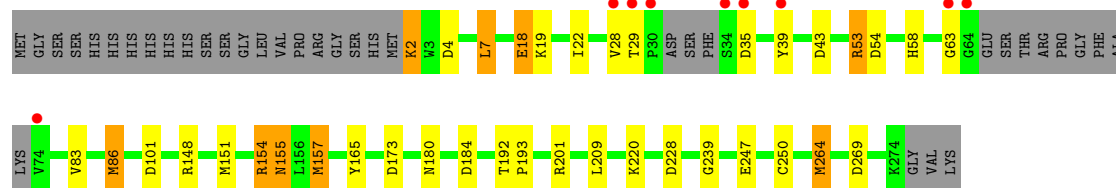
- Molecule 1: DHPS, Dihydropteroate synthase

Chain A: 



- Molecule 1: DHPS, Dihydropteroate synthase

Chain B: 



4 Data and refinement statistics

Property	Value	Source
Space group	P 62 2 2	Depositor
Cell constants a, b, c, α , β , γ	98.39Å 98.39Å 263.24Å 90.00° 90.00° 120.00°	Depositor
Resolution (Å)	81.70 – 1.83 61.13 – 1.83	Depositor EDS
% Data completeness (in resolution range)	93.6 (81.70-1.83) 93.6 (61.13-1.83)	Depositor EDS
R_{merge}	(Not available)	Depositor
R_{sym}	0.07	Depositor
$\langle I/\sigma(I) \rangle$ ¹	3.68 (at 1.83Å)	Xtriage
Refinement program	REFMAC 5.1.24	Depositor
R, R_{free}	0.182 , 0.209 0.197 , 0.221	Depositor DCC
R_{free} test set	3220 reflections (5.39%)	DCC
Wilson B-factor (Å ²)	28.2	Xtriage
Anisotropy	0.774	Xtriage
Bulk solvent k_{sol} (e/Å ³), B_{sol} (Å ²)	0.38 , 39.9	EDS
Estimated twinning fraction	No twinning to report.	Xtriage
L-test for twinning	$\langle L \rangle = 0.51$, $\langle L^2 \rangle = 0.35$	Xtriage
Outliers	3 of 62974 reflections (0.005%)	Xtriage
F_o, F_c correlation	0.96	EDS
Total number of atoms	4584	wwPDB-VP
Average B, all atoms (Å ²)	23.0	wwPDB-VP

Xtriage's analysis on translational NCS is as follows: *The analyses of the Patterson function reveals a significant off-origin peak that is 40.96 % of the origin peak, indicating pseudo translational symmetry. The chance of finding a peak of this or larger height randomly in a structure without pseudo translational symmetry is equal to 2.5344e-04. The detected translational NCS is most likely also responsible for the elevated intensity ratio.*

¹Intensities estimated from amplitudes.

5 Model quality

5.1 Standard geometry

Bond lengths and bond angles in the following residue types are not validated in this section: SO4, 680

The Z score for a bond length (or angle) is the number of standard deviations the observed value is removed from the expected value. A bond length (or angle) with $|Z| > 5$ is considered an outlier worth inspection. RMSZ is the root-mean-square of all Z scores of the bond lengths (or angles).

Mol	Chain	Bond lengths		Bond angles	
		RMSZ	$\# Z > 5$	RMSZ	$\# Z > 5$
1	A	0.93	2/2118 (0.1%)	1.12	18/2855 (0.6%)
1	B	0.95	4/2050 (0.2%)	1.01	12/2763 (0.4%)
All	All	0.94	6/4168 (0.1%)	1.07	30/5618 (0.5%)

Chiral center outliers are detected by calculating the chiral volume of a chiral center and verifying if the center is modelled as a planar moiety or with the opposite hand. A planarity outlier is detected by checking planarity of atoms in a peptide group, atoms in a mainchain group or atoms of a sidechain that are expected to be planar.

Mol	Chain	#Chirality outliers	#Planarity outliers
1	A	0	1
1	B	0	1
All	All	0	2

All (6) bond length outliers are listed below:

Mol	Chain	Res	Type	Atoms	Z	Observed(Å)	Ideal(Å)
1	B	264	MET	SD-CE	-11.04	1.16	1.77
1	B	157	MET	SD-CE	7.00	2.17	1.77
1	B	247	GLU	CD-OE2	6.50	1.32	1.25
1	A	160	MET	CG-SD	5.82	1.96	1.81
1	B	18	GLU	CD-OE2	5.63	1.31	1.25
1	A	165	TYR	CB-CG	-5.19	1.43	1.51

All (30) bond angle outliers are listed below:

Mol	Chain	Res	Type	Atoms	Z	Observed(°)	Ideal(°)
1	A	53	ARG	NE-CZ-NH1	16.59	128.59	120.30
1	A	53	ARG	NE-CZ-NH2	-14.82	112.89	120.30
1	A	148	ARG	NE-CZ-NH2	-12.44	114.08	120.30

Continued on next page...

Continued from previous page...

Mol	Chain	Res	Type	Atoms	Z	Observed(°)	Ideal(°)
1	B	53	ARG	NE-CZ-NH1	11.86	126.23	120.30
1	B	53	ARG	NE-CZ-NH2	-11.12	114.74	120.30
1	B	201	ARG	NE-CZ-NH1	10.52	125.56	120.30
1	A	148	ARG	NE-CZ-NH1	8.67	124.64	120.30
1	A	121	ASP	CB-CG-OD2	8.04	125.53	118.30
1	A	184	ASP	CB-CG-OD2	7.87	125.39	118.30
1	B	269	ASP	CB-CG-OD2	7.61	125.15	118.30
1	A	139	ASP	CB-CG-OD2	7.29	124.87	118.30
1	A	61	ASP	CB-CG-OD2	7.10	124.69	118.30
1	A	4	ASP	CB-CG-OD2	7.10	124.69	118.30
1	B	184	ASP	CB-CG-OD2	7.06	124.65	118.30
1	A	201	ARG	NE-CZ-NH1	6.94	123.77	120.30
1	A	37	GLY	N-CA-C	-6.88	95.89	113.10
1	B	201	ARG	NE-CZ-NH2	-6.76	116.92	120.30
1	B	101	ASP	CB-CG-OD2	6.24	123.92	118.30
1	B	228	ASP	CB-CG-OD2	6.22	123.89	118.30
1	B	148	ARG	NE-CZ-NH2	-6.21	117.19	120.30
1	A	160	MET	CA-CB-CG	6.20	123.84	113.30
1	A	7	LEU	CA-CB-CG	6.12	129.38	115.30
1	B	7	LEU	CA-CB-CG	6.02	129.15	115.30
1	A	27	ASN	CB-CA-C	5.99	122.38	110.40
1	A	101	ASP	CB-CG-OD2	5.90	123.61	118.30
1	A	173	ASP	CB-CG-OD2	5.63	123.37	118.30
1	A	53	ARG	CD-NE-CZ	5.31	131.04	123.60
1	B	4	ASP	CB-CG-OD2	5.27	123.04	118.30
1	B	173	ASP	CB-CG-OD2	5.24	123.02	118.30
1	A	7	LEU	CB-CG-CD2	5.21	119.86	111.00

There are no chirality outliers.

All (2) planarity outliers are listed below:

Mol	Chain	Res	Type	Group
1	A	35	ASP	Peptide
1	B	2	LYS	Peptide

5.2 Close contacts ⓘ

In the following table, the Non-H and H(model) columns list the number of non-hydrogen atoms and hydrogen atoms in the chain respectively. The H(added) column lists the number of hydrogens added by MolProbity. The Clashes column lists the number of clashes within the asymmetric unit, and the number in parentheses is this value normalized per 1000 atoms of the molecule in the

chain. The Symm-Clashes column gives symmetry related clashes, in the same way as for the Clashes column.

Mol	Chain	Non-H	H(model)	H(added)	Clashes	Symm-Clashes
1	A	2087	0	2096	21	0
1	B	2022	0	2039	40	0
2	A	25	0	0	0	0
2	B	25	0	0	0	0
3	A	13	0	7	2	0
3	B	13	0	7	2	0
4	A	211	0	0	8	0
4	B	188	0	0	5	1
All	All	4584	0	4149	59	1

Clashscore is defined as the number of clashes calculated for the entry per 1000 atoms (including hydrogens) of the entry. The overall clashscore for this entry is 7.

All (59) close contacts within the same asymmetric unit are listed below.

Atom-1	Atom-2	Distance(Å)	Clash(Å)
1:A:86:MET:SD	1:A:86:MET:CE	2.04	1.44
1:B:157:MET:CE	1:B:157:MET:SD	2.17	1.33
1:A:250:CYS:HB3	4:A:705:HOH:O	1.13	1.29
1:B:264:MET:CE	1:B:264:MET:SD	1.16	1.24
1:B:250:CYS:HB3	4:B:680:HOH:O	1.02	1.18
1:B:264:MET:HE2	1:B:264:MET:SD	1.74	1.14
1:B:264:MET:CE	1:B:264:MET:CG	2.26	1.14
1:B:264:MET:HE1	1:B:264:MET:SD	1.74	1.12
1:B:264:MET:HE3	1:B:264:MET:SD	1.74	1.08
1:B:165:TYR:CZ	1:B:209:LEU:HD22	2.03	0.94
1:B:39:TYR:CE1	1:B:43:ASP:HB2	2.03	0.94
1:A:22:ILE:H	1:A:58:HIS:HD1	1.22	0.86
1:B:22:ILE:H	1:B:58:HIS:HD1	1.25	0.85
1:B:165:TYR:CZ	1:B:209:LEU:CD2	2.65	0.78
1:A:209:LEU:CD2	4:A:695:HOH:O	2.32	0.77
1:B:165:TYR:CE1	1:B:209:LEU:CD2	2.68	0.77
1:A:2:LYS:N	4:A:678:HOH:O	2.21	0.74
1:A:15:ASN:O	4:A:696:HOH:O	2.07	0.73
1:B:220:LYS:NZ	3:B:501:680:O2	2.21	0.70
1:B:19:LYS:NZ	1:B:58:HIS:NE2	2.38	0.68
1:A:28:VAL:HG22	1:A:86:MET:SD	2.34	0.68
1:B:239:GLY:HA3	1:B:264:MET:HE1	1.77	0.65
1:B:264:MET:HE2	1:B:264:MET:HG3	1.78	0.65
1:B:63:GLY:HA3	4:B:537:HOH:O	1.96	0.65
1:B:18:GLU:HG3	4:B:581:HOH:O	1.97	0.64

Continued on next page...

Continued from previous page...

Atom-1	Atom-2	Distance(Å)	Clash(Å)
1:B:264:MET:HE2	1:B:264:MET:CG	2.10	0.64
1:B:165:TYR:CE1	1:B:209:LEU:HD21	2.35	0.61
1:A:53:ARG:HD2	1:A:54:ASP:OD1	2.01	0.60
1:B:63:GLY:CA	4:B:537:HOH:O	2.49	0.59
1:A:39:TYR:HD1	1:B:39:TYR:HD1	1.51	0.57
1:A:220:LYS:NZ	3:A:502:680:O2	2.39	0.56
1:A:39:TYR:CD1	1:B:39:TYR:HD1	2.24	0.56
1:B:151:MET:HE3	1:B:192:THR:HG23	1.87	0.55
1:B:155:ASN:HD22	1:B:155:ASN:C	2.10	0.55
1:A:209:LEU:HD22	4:A:695:HOH:O	1.98	0.54
1:A:155:ASN:ND2	4:A:657:HOH:O	2.32	0.53
1:A:220:LYS:CE	3:A:502:680:O2	2.57	0.52
1:B:53:ARG:HD2	1:B:54:ASP:OD1	2.10	0.51
1:A:250:CYS:CB	4:A:705:HOH:O	1.98	0.51
1:B:151:MET:HE3	1:B:192:THR:CG2	2.42	0.50
1:B:39:TYR:CD1	1:B:43:ASP:HB2	2.47	0.49
1:B:28:VAL:HG22	1:B:86:MET:CE	2.44	0.47
1:B:192:THR:HB	1:B:193:PRO:HD2	1.96	0.47
1:B:39:TYR:CE1	1:B:43:ASP:CB	2.90	0.46
1:B:18:GLU:CG	4:B:581:HOH:O	2.61	0.46
1:A:160:MET:HB2	1:A:160:MET:HE2	1.72	0.46
1:B:220:LYS:CE	3:B:501:680:O2	2.64	0.46
1:A:28:VAL:HG22	1:A:86:MET:CE	2.46	0.45
1:B:165:TYR:CE1	1:B:209:LEU:HD22	2.39	0.44
1:B:28:VAL:HG22	1:B:86:MET:HE1	2.00	0.43
1:A:74:VAL:HG23	1:A:78:GLU:CB	2.48	0.43
1:B:165:TYR:OH	1:B:209:LEU:CD2	2.66	0.42
1:B:154:ARG:HG2	1:B:155:ASN:N	2.33	0.42
1:A:235:LEU:HD21	1:A:260:GLU:HG2	2.02	0.42
1:B:180:ASN:HD22	1:B:180:ASN:HA	1.74	0.41
1:B:151:MET:CE	1:B:192:THR:HG22	2.51	0.41
1:A:209:LEU:HD23	4:A:695:HOH:O	2.10	0.41
1:B:239:GLY:CA	1:B:264:MET:HE1	2.50	0.40
1:A:192:THR:HB	1:A:193:PRO:HD2	2.03	0.40

All (1) symmetry-related close contacts are listed below. The label for Atom-2 includes the symmetry operator and encoded unit-cell translations to be applied.

Atom-1	Atom-2	Distance(Å)	Clash(Å)
4:B:622:HOH:O	4:B:622:HOH:O[4_465]	1.99	0.21

5.3 Torsion angles

5.3.1 Protein backbone ⓘ

In the following table, the Percentiles column shows the percent Ramachandran outliers of the chain as a percentile score with respect to all X-ray entries followed by that with respect to entries of similar resolution. The Analysed column shows the number of residues for which the backbone conformation was analysed, and the total number of residues.

Mol	Chain	Analysed	Favoured	Allowed	Outliers	Percentiles	
1	A	265/297 (89%)	262 (99%)	3 (1%)	0	100	100
1	B	255/297 (86%)	252 (99%)	2 (1%)	1 (0%)	43	25
All	All	520/594 (88%)	514 (99%)	5 (1%)	1 (0%)	56	38

All (1) Ramachandran outliers are listed below:

Mol	Chain	Res	Type
1	B	29	THR

5.3.2 Protein sidechains ⓘ

In the following table, the Percentiles column shows the percent sidechain outliers of the chain as a percentile score with respect to all X-ray entries followed by that with respect to entries of similar resolution. The Analysed column shows the number of residues for which the sidechain conformation was analysed, and the total number of residues.

Mol	Chain	Analysed	Rotameric	Outliers	Percentiles	
1	A	224/247 (91%)	215 (96%)	9 (4%)	42	20
1	B	217/247 (88%)	210 (97%)	7 (3%)	51	30
All	All	441/494 (89%)	425 (96%)	16 (4%)	47	25

All (16) residues with a non-rotameric sidechain are listed below:

Mol	Chain	Res	Type
1	A	7	LEU
1	A	11	GLU
1	A	28	VAL
1	A	34	SER
1	A	74	VAL
1	A	83	VAL
1	A	95	LYS
1	A	148	ARG

Continued on next page...

Continued from previous page...

Mol	Chain	Res	Type
1	A	160	MET
1	B	2	LYS
1	B	7	LEU
1	B	35	ASP
1	B	83	VAL
1	B	86	MET
1	B	154	ARG
1	B	155	ASN

Some sidechains can be flipped to improve hydrogen bonding and reduce clashes. All (6) such sidechains are listed below:

Mol	Chain	Res	Type
1	A	88	GLN
1	A	155	ASN
1	A	180	ASN
1	B	88	GLN
1	B	155	ASN
1	B	180	ASN

5.3.3 RNA ⓘ

There are no RNA chains in this entry.

5.4 Non-standard residues in protein, DNA, RNA chains ⓘ

There are no non-standard protein/DNA/RNA residues in this entry.

5.5 Carbohydrates ⓘ

There are no carbohydrates in this entry.

5.6 Ligand geometry ⓘ

12 ligands are modelled in this entry.

In the following table, the Counts columns list the number of bonds (or angles) for which Mogul statistics could be retrieved, the number of bonds (or angles) that are observed in the model and the number of bonds (or angles) that are defined in the chemical component dictionary. The Link column lists molecule types, if any, to which the group is linked. The Z score for a bond length

(or angle) is the number of standard deviations the observed value is removed from the expected value. A bond length (or angle) with $|Z| > 2$ is considered an outlier worth inspection. RMSZ is the root-mean-square of all Z scores of the bond lengths (or angles).

Mol	Type	Chain	Res	Link	Bond lengths			Bond angles		
					Counts	RMSZ	# Z > 2	Counts	RMSZ	# Z > 2
2	SO4	A	401	-	4,4,4	0.66	0	6,6,6	0.67	0
2	SO4	A	404	-	4,4,4	0.21	0	6,6,6	0.48	0
2	SO4	A	405	-	4,4,4	0.17	0	6,6,6	0.27	0
2	SO4	A	408	-	4,4,4	0.44	0	6,6,6	0.57	0
2	SO4	A	409	-	4,4,4	0.33	0	6,6,6	0.35	0
3	680	A	502	-	13,13,13	2.24	3 (23%)	16,18,18	2.16	7 (43%)
2	SO4	B	402	-	4,4,4	0.62	0	6,6,6	0.39	0
2	SO4	B	403	-	4,4,4	0.52	0	6,6,6	0.82	0
2	SO4	B	406	-	4,4,4	0.18	0	6,6,6	0.15	0
2	SO4	B	407	-	4,4,4	0.26	0	6,6,6	1.17	1 (16%)
2	SO4	B	410	-	4,4,4	0.33	0	6,6,6	0.35	0
3	680	B	501	-	13,13,13	2.87	4 (30%)	16,18,18	2.05	3 (18%)

In the following table, the Chirals column lists the number of chiral outliers, the number of chiral centers analysed, the number of these observed in the model and the number defined in the chemical component dictionary. Similar counts are reported in the Torsion and Rings columns. '-' means no outliers of that kind were identified.

Mol	Type	Chain	Res	Link	Chirals	Torsions	Rings
2	SO4	A	401	-	-	0/0/0/0	0/0/0/0
2	SO4	A	404	-	-	0/0/0/0	0/0/0/0
2	SO4	A	405	-	-	0/0/0/0	0/0/0/0
2	SO4	A	408	-	-	0/0/0/0	0/0/0/0
2	SO4	A	409	-	-	0/0/0/0	0/0/0/0
3	680	A	502	-	-	0/4/6/6	0/1/1/1
2	SO4	B	402	-	-	0/0/0/0	0/0/0/0
2	SO4	B	403	-	-	0/0/0/0	0/0/0/0
2	SO4	B	406	-	-	0/0/0/0	0/0/0/0
2	SO4	B	407	-	-	0/0/0/0	0/0/0/0
2	SO4	B	410	-	-	0/0/0/0	0/0/0/0
3	680	B	501	-	-	0/4/6/6	0/1/1/1

All (7) bond length outliers are listed below:

Mol	Chain	Res	Type	Atoms	Z	Observed(Å)	Ideal(Å)
3	B	501	680	C2-N3	-7.14	1.35	1.46
3	A	502	680	O1-C3	4.98	1.34	1.24
3	A	502	680	C2-N3	-4.78	1.39	1.46

Continued on next page...

Continued from previous page...

Mol	Chain	Res	Type	Atoms	Z	Observed(Å)	Ideal(Å)
3	B	501	680	O1-C3	4.46	1.33	1.24
3	B	501	680	O2-N3	-3.83	1.17	1.23
3	A	502	680	O2-N3	-2.75	1.19	1.23
3	B	501	680	C2-C1	-2.30	1.41	1.43

All (11) bond angle outliers are listed below:

Mol	Chain	Res	Type	Atoms	Z	Observed(°)	Ideal(°)
3	B	501	680	C3-C2-C1	5.55	118.35	114.55
3	A	502	680	O3-N3-O2	-4.54	112.17	121.35
3	A	502	680	C3-C2-C1	4.30	117.50	114.55
3	B	501	680	O3-N3-O2	-3.58	114.12	121.35
3	B	501	680	C4-N1-C1	2.93	121.77	117.61
3	A	502	680	O3-N3-C2	2.53	125.51	117.76
3	A	502	680	N5-C4-N4	2.43	120.53	117.86
2	B	407	SO4	O4-S-O3	2.36	119.04	109.08
3	A	502	680	C5-N2-C1	-2.35	120.79	122.85
3	A	502	680	C4-N1-C1	2.28	120.85	117.61
3	A	502	680	C2-C3-N4	2.02	121.28	115.28

There are no chirality outliers.

There are no torsion outliers.

There are no ring outliers.

5.7 Other polymers ⓘ

There are no such residues in this entry.

5.8 Polymer linkage issues

There are no chain breaks in this entry.

6 Fit of model and data ⓘ

6.1 Protein, DNA and RNA chains ⓘ

In the following table, the column labelled ‘#RSRZ> 2’ contains the number (and percentage) of RSRZ outliers, followed by percent RSRZ outliers for the chain as percentile scores relative to all X-ray entries and entries of similar resolution. The OWAB column contains the minimum, median, 95th percentile and maximum values of the occupancy-weighted average B-factor per residue. The column labelled ‘Q< 0.9’ lists the number of (and percentage) of residues with an average occupancy less than 0.9.

Mol	Chain	Analysed	<RSRZ>	#RSRZ>2	OWAB(Å ²)	Q<0.9
1	A	269/297 (90%)	0.10	7 (2%) 53 49	13, 18, 34, 65	0
1	B	261/297 (87%)	0.05	9 (3%) 43 38	13, 19, 33, 52	0
All	All	530/594 (89%)	0.08	16 (3%) 47 44	13, 18, 34, 65	0

All (16) RSRZ outliers are listed below:

Mol	Chain	Res	Type	RSRZ
1	A	74	VAL	9.2
1	A	66	SER	4.9
1	A	71	PHE	4.3
1	B	29	THR	3.9
1	B	30	PRO	3.9
1	B	35	ASP	3.9
1	B	74	VAL	3.6
1	A	73	LYS	3.3
1	B	39	TYR	3.3
1	B	28	VAL	2.7
1	A	72	ALA	2.7
1	B	64	GLY	2.6
1	A	137	HIS	2.5
1	B	63	GLY	2.3
1	A	35	ASP	2.1
1	B	34	SER	2.0

6.2 Non-standard residues in protein, DNA, RNA chains ⓘ

There are no non-standard protein/DNA/RNA residues in this entry.

6.3 Carbohydrates ⓘ

There are no carbohydrates in this entry.

6.4 Ligands ⓘ

In the following table, the Atoms column lists the number of modelled atoms in the group and the number defined in the chemical component dictionary. LLDF column lists the quality of electron density of the group with respect to its neighbouring residues in protein, DNA or RNA chains. The B-factors column lists the minimum, median, 95th percentile and maximum values of B factors of atoms in the group. The column labelled 'Q< 0.9' lists the number of atoms with occupancy less than 0.9.

Mol	Type	Chain	Res	Atoms	RSR	LLDF	B-factors(Å ²)	Q<0.9
2	SO4	A	409	5/5	0.42	14.30	91,92,92,93	0
2	SO4	B	402	5/5	0.13	5.31	43,45,51,52	0
2	SO4	B	410	5/5	0.23	3.78	85,86,86,87	0
2	SO4	B	403	5/5	0.22	3.13	56,56,57,58	0
2	SO4	A	408	5/5	0.15	2.56	69,69,72,72	0
2	SO4	A	405	5/5	0.18	2.19	78,78,79,80	0
2	SO4	B	406	5/5	0.21	1.58	86,87,88,89	0
2	SO4	A	404	5/5	0.16	0.80	54,56,58,58	0
2	SO4	B	407	5/5	0.11	0.71	55,56,59,60	0
3	680	A	502	13/13	0.11	0.43	29,34,52,53	0
3	680	B	501	13/13	0.10	0.16	32,36,57,58	0
2	SO4	A	401	5/5	0.07	-0.59	45,46,49,50	0

6.5 Other polymers ⓘ

There are no such residues in this entry.