



# Full wwPDB X-ray Structure Validation Report

Feb 28, 2014 – 10:51 PM GMT

PDB ID : 3TXO  
Title : PKC eta kinase in complex with a naphthyridine  
Authors : Stark, W.; Rummel, G.; Cowan-Jacob, S.W.  
Deposited on : 2011-09-23  
Resolution : 2.05 Å(reported)

This is a full wwPDB validation report for a publicly released PDB entry.  
We welcome your comments at [validation@mail.wwpdb.org](mailto:validation@mail.wwpdb.org)  
A user guide is available at <http://wwpdb.org/ValidationPDFNotes.html>

---

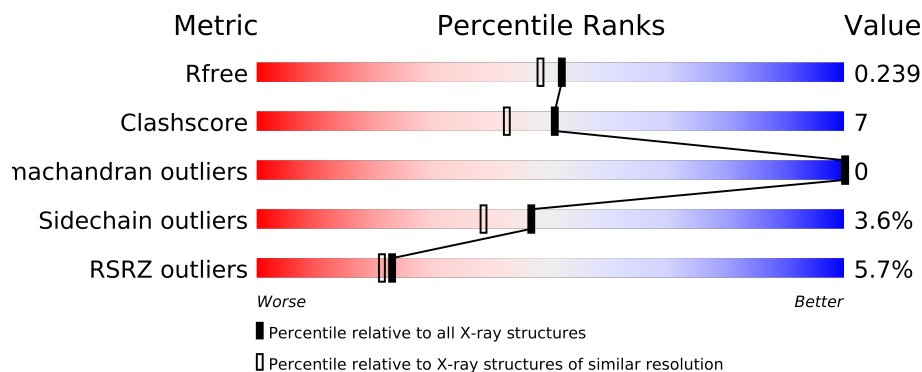
The following versions of software and data (see [references](#)) were used in the production of this report:

MolProbity : 4.02b-467  
Mogul : 1.15 2013  
Xtriage (Phenix) : dev-1323  
EDS : stable22639  
Percentile statistics : 21963  
Refmac : 5.8.0049  
CCP4 : 6.3.0 (Settle)  
Ideal geometry (proteins) : Engh & Huber (2001)  
Ideal geometry (DNA, RNA) : Parkinson et. al. (1996)  
Validation Pipeline (wwPDB-VP) : stable22683

# 1 Overall quality at a glance

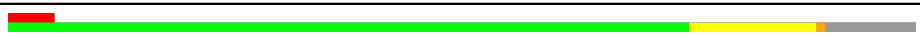
The reported resolution of this entry is 2.05 Å.

Percentile scores (ranging between 0-100) for global validation metrics of the entry are shown in the following graphic. The table shows the number of entries on which the scores are based.



Metric	Whole archive (#Entries)	Similar resolution (#Entries, resolution range(Å))
$R_{free}$	66092	1380 (2.06-2.02)
Clashscore	79885	1577 (2.06-2.02)
Ramachandran outliers	78287	1565 (2.06-2.02)
Sidechain outliers	78261	1565 (2.06-2.02)
RSRZ outliers	66119	1381 (2.06-2.02)

The table below summarises the geometric issues observed across the polymeric chains and their fit to the electron density. The red, orange, yellow and green segments on the lower bar indicate the fraction of residues that contain outliers for  $\geq 3$ , 2, 1 and 0 types of geometric quality criteria. The upper red bar (where present) indicates the fraction of residues that have poor fit to the electron density.

Mol	Chain	Length	Quality of chain
1	A	353	

## 2 Entry composition i

There are 3 unique types of molecules in this entry. The entry contains 2755 atoms, of which 0 are hydrogen and 0 are deuterium.

In the tables below, the ZeroOcc column contains the number of atoms modelled with zero occupancy, the AltConf column contains the number of residues with at least one atom in alternate conformation and the Trace column contains the number of residues modelled with at most 2 atoms.

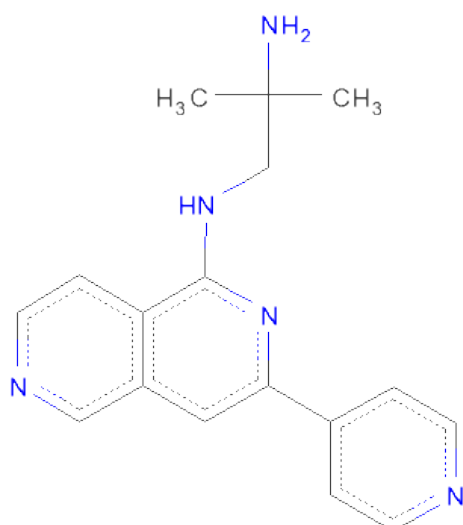
- Molecule 1 is a protein called Protein kinase C eta type.

Mol	Chain	Residues	Atoms						ZeroOcc	AltConf	Trace
			Total	C	N	O	P	S			
1	A	318	2594	1666	432	476	1	19	0	0	0

There are 3 discrepancies between the modelled and reference sequences:

Chain	Residue	Modelled	Actual	Comment	Reference
A	331	GLY	-	EXPRESSION TAG	UNP P24723
A	332	PRO	-	EXPRESSION TAG	UNP P24723
A	675	GLU	SER	ENGINEERED MUTATION	UNP P24723

- Molecule 2 is 2-METHYL-N 1 -[3-(PYRIDIN-4-YL)-2,6-NAPHTHYRIDIN-1-YL]PROPAN E-1,2-DIAMINE (three-letter code: 07U) (formula: C<sub>17</sub>H<sub>19</sub>N<sub>5</sub>).



Mol	Chain	Residues	Atoms			ZeroOcc	AltConf
			Total	C	N		
2	A	1	22	17	5	0	0

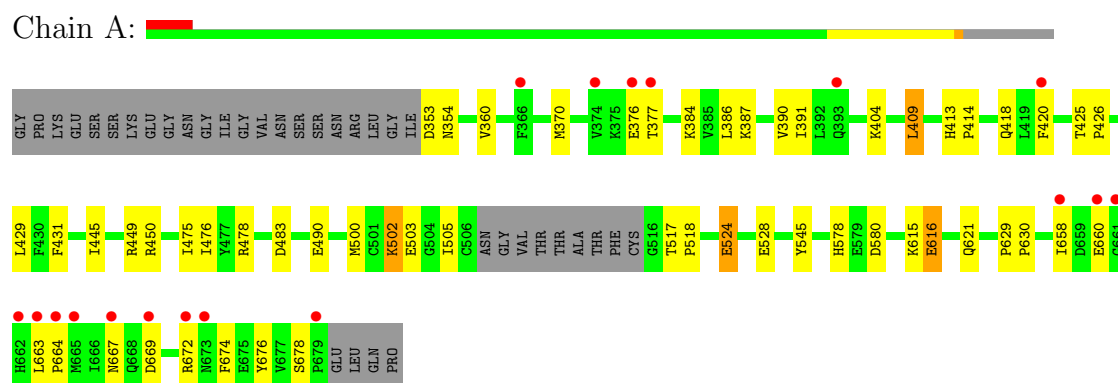
- Molecule 3 is water.

Mol	Chain	Residues	Atoms		ZeroOcc	AltConf
3	A	139	Total 139	O 139	0	0

### 3 Residue-property plots

These plots are drawn for all protein, RNA and DNA chains in the entry. The first graphic for a chain summarises the proportions of errors displayed in the second graphic. The second graphic shows the sequence view annotated by issues in geometry and electron density. Residues are color-coded according to the number of geometric quality criteria for which they contain at least one outlier: green = 0, yellow = 1, orange = 2 and red = 3 or more. A red dot above a residue indicates a poor fit to the electron density ( $RSRZ > 2$ ). Stretches of 2 or more consecutive residues without any outlier are shown as a green connector. Residues present in the sample, but not in the model, are shown in grey.

- Molecule 1: Protein kinase C eta type



## 4 Data and refinement statistics

Property	Value	Source
Space group	P 21 21 2	Depositor
Cell constants a, b, c, $\alpha$ , $\beta$ , $\gamma$	113.53Å 56.86Å 63.37Å 90.00° 90.00° 90.00°	Depositor
Resolution (Å)	56.89 – 2.05 56.77 – 2.05	Depositor EDS
% Data completeness (in resolution range)	99.9 (56.89-2.05) 99.9 (56.77-2.05)	Depositor EDS
$R_{merge}$	0.09	Depositor
$R_{sym}$	(Not available)	Depositor
$\langle I/\sigma(I) \rangle$ <sup>1</sup>	3.40 (at 2.05Å)	Xtriage
Refinement program	REFMAC 5.5.0102	Depositor
R, $R_{free}$	0.194 , 0.241 0.195 , 0.239	Depositor DCC
$R_{free}$ test set	1321 reflections (5.26%)	DCC
Wilson B-factor (Å <sup>2</sup> )	34.0	Xtriage
Anisotropy	0.052	Xtriage
Bulk solvent $k_{sol}$ (e/Å <sup>3</sup> ), $B_{sol}$ (Å <sup>2</sup> )	0.36 , 46.4	EDS
Estimated twinning fraction	No twinning to report.	Xtriage
L-test for twinning	$\langle  L  \rangle = 0.48$ , $\langle L^2 \rangle = 0.31$	Xtriage
Outliers	0 of 26481 reflections	Xtriage
$F_o, F_c$ correlation	0.95	EDS
Total number of atoms	2755	wwPDB-VP
Average B, all atoms (Å <sup>2</sup> )	41.0	wwPDB-VP

Xtriage's analysis on translational NCS is as follows: *The largest off-origin peak in the Patterson function is 5.44% of the height of the origin peak. No significant pseudotranslation is detected.*

<sup>1</sup>Intensities estimated from amplitudes.

## 5 Model quality

### 5.1 Standard geometry

Bond lengths and bond angles in the following residue types are not validated in this section: TPO, 07U

The Z score for a bond length (or angle) is the number of standard deviations the observed value is removed from the expected value. A bond length (or angle) with  $|Z| > 5$  is considered an outlier worth inspection. RMSZ is the root-mean-square of all Z scores of the bond lengths (or angles).

Mol	Chain	Bond lengths		Bond angles	
		RMSZ	$\# Z  > 5$	RMSZ	$\# Z  > 5$
1	A	1.11	1/2648 (0.0%)	0.96	3/3575 (0.1%)

All (1) bond length outliers are listed below:

Mol	Chain	Res	Type	Atoms	Z	Observed(Å)	Ideal(Å)
1	A	545	TYR	CD2-CE2	6.26	1.48	1.39

All (3) bond angle outliers are listed below:

Mol	Chain	Res	Type	Atoms	Z	Observed(°)	Ideal(°)
1	A	409	LEU	CA-CB-CG	8.21	134.19	115.30
1	A	524	GLU	CA-CB-CG	6.89	128.56	113.40
1	A	524	GLU	CB-CA-C	-5.22	99.96	110.40

There are no chirality outliers.

There are no planarity outliers.

### 5.2 Close contacts

In the following table, the Non-H and H(model) columns list the number of non-hydrogen atoms and hydrogen atoms in the chain respectively. The H(added) column lists the number of hydrogens added by MolProbity. The Clashes column lists the number of clashes within the asymmetric unit, and the number in parentheses is this value normalized per 1000 atoms of the molecule in the chain. The Symm-Clashes column gives symmetry related clashes, in the same way as for the Clashes column.

Mol	Chain	Non-H	H(model)	H(added)	Clashes	Symm-Clashes
1	A	2594	0	2522	38	0
2	A	22	0	19	0	0

*Continued on next page...*

*Continued from previous page...*

Mol	Chain	Non-H	H(model)	H(added)	Clashes	Symm-Clashes
3	A	139	0	0	4	3
All	All	2755	0	2541	38	3

Clashscore is defined as the number of clashes calculated for the entry per 1000 atoms (including hydrogens) of the entry. The overall clashscore for this entry is 7.

All (38) close contacts within the same asymmetric unit are listed below.

Atom-1	Atom-2	Distance(Å)	Clash(Å)
1:A:578:HIS:CD2	1:A:580:ASP:H	1.85	0.94
1:A:476:ILE:HD11	1:A:505:ILE:HG21	1.53	0.90
1:A:404:LYS:HE3	1:A:674:PHE:O	1.90	0.71
1:A:502:LYS:HD3	1:A:505:ILE:HD11	1.76	0.66
1:A:502:LYS:HD3	1:A:505:ILE:CD1	2.26	0.66
1:A:578:HIS:HD2	1:A:580:ASP:H	1.43	0.65
1:A:578:HIS:HB2	3:A:79:HOH:O	1.96	0.65
1:A:387:LYS:HB2	1:A:390:VAL:HG22	1.82	0.62
1:A:621:GLN:HG3	3:A:57:HOH:O	1.99	0.60
1:A:353:ASP:O	1:A:353:ASP:OD1	2.20	0.59
1:A:663:LEU:HB3	1:A:664:PRO:HD3	1.85	0.58
1:A:425:THR:HB	1:A:426:PRO:HD2	1.84	0.57
1:A:404:LYS:HE2	1:A:676:TYR:HB2	1.86	0.57
1:A:503:GLU:O	1:A:505:ILE:HD12	2.06	0.56
1:A:387:LYS:HG2	1:A:658:ILE:HD11	1.89	0.54
1:A:578:HIS:CD2	1:A:580:ASP:N	2.68	0.53
1:A:528:GLU:HG2	3:A:52:HOH:O	2.08	0.52
1:A:449:ARG:HB3	1:A:449:ARG:HH11	1.75	0.51
1:A:475:ILE:CD1	1:A:503:GLU:HG2	2.41	0.51
1:A:616:GLU:CG	1:A:616:GLU:O	2.63	0.47
1:A:420:PHE:O	1:A:678:SER:HB2	2.15	0.47
1:A:404:LYS:CE	1:A:676:TYR:HB2	2.45	0.47
1:A:669:ASP:HB2	1:A:672:ARG:NH2	2.32	0.45
1:A:578:HIS:HD2	1:A:580:ASP:N	2.12	0.45
1:A:517:THR:HA	1:A:518:PRO:HD3	1.91	0.44
1:A:413:HIS:CG	1:A:414:PRO:HD2	2.53	0.44
1:A:384:LYS:HB3	1:A:431:PHE:HB2	2.00	0.44
1:A:478:ARG:NH1	1:A:500:MET:O	2.51	0.43
1:A:629:PRO:HA	1:A:630:PRO:HD2	1.79	0.43
1:A:667:ASN:HB3	1:A:669:ASP:OD2	2.19	0.43
1:A:425:THR:HB	1:A:426:PRO:CD	2.50	0.42
1:A:445:ILE:HD11	1:A:450:ARG:HA	2.02	0.41
1:A:490:GLU:O	1:A:629:PRO:HG2	2.21	0.41
1:A:386:LEU:HB3	1:A:391:ILE:HD11	2.02	0.41

*Continued on next page...*



*Continued from previous page...*

Atom-1	Atom-2	Distance(Å)	Clash(Å)
1:A:360:VAL:HA	1:A:370:MET:HG2	2.04	0.40
1:A:660:GLU:CD	1:A:660:GLU:H	2.24	0.40
1:A:418:GLN:HA	3:A:59:HOH:O	2.22	0.40
1:A:502:LYS:HD3	1:A:505:ILE:HD13	2.03	0.40

All (3) symmetry-related close contacts are listed below. The label for Atom-2 includes the symmetry operator and encoded unit-cell translations to be applied.

Atom-1	Atom-2	Distance(Å)	Clash(Å)
3:A:12:HOH:O	3:A:125:HOH:O[2_555]	2.09	0.11
3:A:157:HOH:O	3:A:157:HOH:O[2_565]	2.09	0.11
3:A:156:HOH:O	3:A:156:HOH:O[2_555]	2.19	0.01

## 5.3 Torsion angles

### 5.3.1 Protein backbone ⓘ

In the following table, the Percentiles column shows the percent Ramachandran outliers of the chain as a percentile score with respect to all X-ray entries followed by that with respect to entries of similar resolution. The Analysed column shows the number of residues for which the backbone conformation was analysed, and the total number of residues.

Mol	Chain	Analysed	Favoured	Allowed	Outliers	Percentiles	
1	A	313/353 (89%)	296 (95%)	17 (5%)	0	100	100

There are no Ramachandran outliers to report.

### 5.3.2 Protein sidechains ⓘ

In the following table, the Percentiles column shows the percent sidechain outliers of the chain as a percentile score with respect to all X-ray entries followed by that with respect to entries of similar resolution. The Analysed column shows the number of residues for which the sidechain conformation was analysed, and the total number of residues.

Mol	Chain	Analysed	Rotameric	Outliers	Percentiles	
1	A	280/308 (91%)	270 (96%)	10 (4%)	47	38

All (10) residues with a non-rotameric sidechain are listed below:

Mol	Chain	Res	Type
1	A	354	ASN
1	A	376	GLU
1	A	377	THR
1	A	409	LEU
1	A	429	LEU
1	A	483	ASP
1	A	502	LYS
1	A	524	GLU
1	A	615	LYS
1	A	616	GLU

Some sidechains can be flipped to improve hydrogen bonding and reduce clashes. All (6) such sidechains are listed below:

Mol	Chain	Res	Type
1	A	446	GLN
1	A	527	GLN
1	A	578	HIS
1	A	602	GLN
1	A	623	ASN
1	A	673	ASN

### 5.3.3 RNA ⓘ

There are no RNA chains in this entry.

## 5.4 Non-standard residues in protein, DNA, RNA chains ⓘ

1 non-standard protein/DNA/RNA residue is modelled in this entry.

In the following table, the Counts columns list the number of bonds (or angles) for which Mogul statistics could be retrieved, the number of bonds (or angles) that are observed in the model and the number of bonds (or angles) that are defined in the chemical component dictionary. The Link column lists molecule types, if any, to which the group is linked. The Z score for a bond length (or angle) is the number of standard deviations the observed value is removed from the expected value. A bond length (or angle) with  $|Z| > 2$  is considered an outlier worth inspection. RMSZ is the root-mean-square of all Z scores of the bond lengths (or angles).

Mol	Type	Chain	Res	Link	Bond lengths			Bond angles		
					Counts	RMSZ	$\# Z  > 2$	Counts	RMSZ	$\# Z  > 2$
1	TPO	A	656	1	10,10,11	6.07	2 (20%)	12,14,16	1.35	2 (16%)

In the following table, the Chirals column lists the number of chiral outliers, the number of chiral

centers analysed, the number of these observed in the model and the number defined in the chemical component dictionary. Similar counts are reported in the Torsion and Rings columns. '-' means no outliers of that kind were identified.

Mol	Type	Chain	Res	Link	Chirals	Torsions	Rings
1	TPO	A	656	1	-	0/9/11/13	0/0/0/0

All (2) bond length outliers are listed below:

Mol	Chain	Res	Type	Atoms	Z	Observed(Å)	Ideal(Å)
1	A	656	TPO	O-C	18.96	1.24	1.11
1	A	656	TPO	CA-C	2.29	1.52	1.48

All (2) bond angle outliers are listed below:

Mol	Chain	Res	Type	Atoms	Z	Observed(°)	Ideal(°)
1	A	656	TPO	OG1-CB-CA	2.66	112.01	107.55
1	A	656	TPO	O2P-P-O1P	2.56	118.81	110.44

There are no chirality outliers.

There are no torsion outliers.

There are no ring outliers.

## 5.5 Carbohydrates ⓘ

There are no carbohydrates in this entry.

## 5.6 Ligand geometry ⓘ

1 ligand is modelled in this entry.

In the following table, the Counts columns list the number of bonds (or angles) for which Mogul statistics could be retrieved, the number of bonds (or angles) that are observed in the model and the number of bonds (or angles) that are defined in the chemical component dictionary. The Link column lists molecule types, if any, to which the group is linked. The Z score for a bond length (or angle) is the number of standard deviations the observed value is removed from the expected value. A bond length (or angle) with  $|Z| > 2$  is considered an outlier worth inspection. RMSZ is the root-mean-square of all Z scores of the bond lengths (or angles).

Mol	Type	Chain	Res	Link	Bond lengths			Bond angles		
					Counts	RMSZ	$\# Z  > 2$	Counts	RMSZ	$\# Z  > 2$
2	07U	A	1	-	24,24,24	2.23	6 (25%)	34,34,34	1.92	10 (29%)

In the following table, the Chirals column lists the number of chiral outliers, the number of chiral centers analysed, the number of these observed in the model and the number defined in the chemical component dictionary. Similar counts are reported in the Torsion and Rings columns. '-' means no outliers of that kind were identified.

Mol	Type	Chain	Res	Link	Chirals	Torsions	Rings
2	07U	A	1	-	-	0/10/10/10	0/1/3/3

All (6) bond length outliers are listed below:

Mol	Chain	Res	Type	Atoms	Z	Observed(Å)	Ideal(Å)
2	A	1	07U	C21-C20	8.02	1.42	1.37
2	A	1	07U	C29-C27	3.19	1.40	1.36
2	A	1	07U	C18-C31	-3.04	1.41	1.45
2	A	1	07U	C18-N19	2.46	1.36	1.33
2	A	1	07U	C3-C6	2.44	1.57	1.53
2	A	1	07U	C24-N26	2.25	1.36	1.32

All (10) bond angle outliers are listed below:

Mol	Chain	Res	Type	Atoms	Z	Observed(°)	Ideal(°)
2	A	1	07U	C6-C3-N1	-5.60	108.38	113.31
2	A	1	07U	C21-C20-N19	-3.63	119.28	121.25
2	A	1	07U	C20-N19-C18	3.58	122.58	117.96
2	A	1	07U	C29-C27-N26	-3.10	120.61	123.84
2	A	1	07U	C3-N1-C18	2.76	126.01	122.72
2	A	1	07U	C20-C21-C23	-2.50	119.30	120.76
2	A	1	07U	C21-C20-C32	-2.34	122.39	123.42
2	A	1	07U	C35-N37-C38	2.27	122.61	116.84
2	A	1	07U	C40-C38-N37	-2.03	119.95	123.63
2	A	1	07U	C24-C23-C31	2.00	119.62	117.72

There are no chirality outliers.

There are no torsion outliers.

There are no ring outliers.

## 5.7 Other polymers ⓘ

There are no such residues in this entry.

## 5.8 Polymer linkage issues

There are no chain breaks in this entry.

## 6 Fit of model and data ⓘ

### 6.1 Protein, DNA and RNA chains ⓘ

In the following table, the column labelled ‘#RSRZ> 2’ contains the number (and percentage) of RSRZ outliers, followed by percent RSRZ outliers for the chain as percentile scores relative to all X-ray entries and entries of similar resolution. The OWAB column contains the minimum, median, 95<sup>th</sup> percentile and maximum values of the occupancy-weighted average B-factor per residue. The column labelled ‘Q< 0.9’ lists the number of (and percentage) of residues with an average occupancy less than 0.9.

Mol	Chain	Analysed	<RSRZ>	#RSRZ>2	OWAB(Å <sup>2</sup> )	Q<0.9
1	A	318/353 (90%)	0.31	18 (5%) 23 21	19, 37, 71, 81	0

All (18) RSRZ outliers are listed below:

Mol	Chain	Res	Type	RSRZ
1	A	665	MET	4.4
1	A	658	ILE	4.0
1	A	664	PRO	3.5
1	A	420	PHE	3.3
1	A	377	THR	3.2
1	A	663	LEU	3.2
1	A	366	PHE	3.1
1	A	661	GLY	3.1
1	A	679	PRO	3.0
1	A	672	ARG	2.9
1	A	673	ASN	2.8
1	A	662	HIS	2.7
1	A	667	ASN	2.7
1	A	374	VAL	2.5
1	A	376	GLU	2.5
1	A	669	ASP	2.4
1	A	660	GLU	2.4
1	A	393	GLN	2.2

### 6.2 Non-standard residues in protein, DNA, RNA chains ⓘ

In the following table, the Atoms column lists the number of modelled atoms in the group and the number defined in the chemical component dictionary. LLDF column lists the quality of electron density of the group with respect to its neighbouring residues in protein, DNA or RNA chains. The B-factors column lists the minimum, median, 95<sup>th</sup> percentile and maximum values of B factors of atoms in the group. The column labelled ‘Q< 0.9’ lists the number of atoms with occupancy less than 0.9.

Mol	Type	Chain	Res	Atoms	RSR	LLDF	B-factors( $\text{\AA}^2$ )	Q<0.9
1	TPO	A	656	11/12	0.12	-1.52	66,67,69,70	0

### 6.3 Carbohydrates

There are no carbohydrates in this entry.

### 6.4 Ligands

In the following table, the Atoms column lists the number of modelled atoms in the group and the number defined in the chemical component dictionary. LLDF column lists the quality of electron density of the group with respect to its neighbouring residues in protein, DNA or RNA chains. The B-factors column lists the minimum, median, 95<sup>th</sup> percentile and maximum values of B factors of atoms in the group. The column labelled 'Q< 0.9' lists the number of atoms with occupancy less than 0.9.

Mol	Type	Chain	Res	Atoms	RSR	LLDF	B-factors( $\text{\AA}^2$ )	Q<0.9
2	07U	A	1	22/22	0.11	-0.33	28,32,36,37	0

### 6.5 Other polymers

There are no such residues in this entry.