



Full wwPDB X-ray Structure Validation Report

Feb 28, 2014 – 05:20 AM GMT

PDB ID : 3U74
Title : Crystal structure of stabilized human uPAR mutant
Authors : Huang, M.D.; Xu, X.; Yuan, C.
Deposited on : 2011-10-13
Resolution : 2.39 Å(reported)

This is a full wwPDB validation report for a publicly released PDB entry.
We welcome your comments at validation@mail.wwpdb.org
A user guide is available at <http://wwpdb.org/ValidationPDFNotes.html>

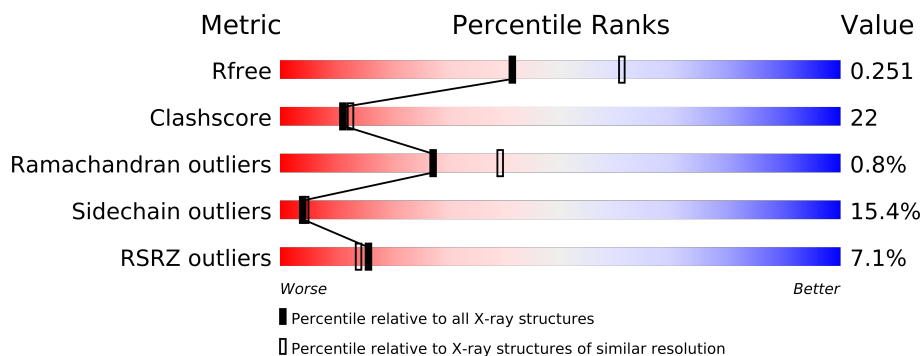
The following versions of software and data (see [references](#)) were used in the production of this report:

MolProbity : 4.02b-467
Mogul : 1.15 2013
Xtriage (Phenix) : dev-1323
EDS : stable22639
Percentile statistics : 21963
Refmac : 5.8.0049
CCP4 : 6.3.0 (Settle)
Ideal geometry (proteins) : Engh & Huber (2001)
Ideal geometry (DNA, RNA) : Parkinson et. al. (1996)
Validation Pipeline (wwPDB-VP) : stable22683

1 Overall quality at a glance


The reported resolution of this entry is 2.39 Å.

Percentile scores (ranging between 0-100) for global validation metrics of the entry are shown in the following graphic. The table shows the number of entries on which the scores are based.



Metric	Whole archive (#Entries)	Similar resolution (#Entries, resolution range(Å))
R_{free}	66092	2207 (2.40-2.40)
Clashscore	79885	2789 (2.40-2.40)
Ramachandran outliers	78287	2736 (2.40-2.40)
Sidechain outliers	78261	2737 (2.40-2.40)
RSRZ outliers	66119	2210 (2.40-2.40)

The table below summarises the geometric issues observed across the polymeric chains and their fit to the electron density. The red, orange, yellow and green segments on the lower bar indicate the fraction of residues that contain outliers for ≥ 3 , 2, 1 and 0 types of geometric quality criteria. The upper red bar (where present) indicates the fraction of residues that have poor fit to the electron density.

Mol	Chain	Length	Quality of chain
1	U	283	

2 Entry composition

There are 4 unique types of molecules in this entry. The entry contains 2081 atoms, of which 0 are hydrogen and 0 are deuterium.

In the tables below, the ZeroOcc column contains the number of atoms modelled with zero occupancy, the AltConf column contains the number of residues with at least one atom in alternate conformation and the Trace column contains the number of residues modelled with at most 2 atoms.

- Molecule 1 is a protein called Urokinase plasminogen activator surface receptor.

Mol	Chain	Residues	Atoms					ZeroOcc	AltConf	Trace
1	U	263	Total	C	N	O	S	0	0	0
			2017	1207	371	403	36			

There are 2 discrepancies between the modelled and reference sequences:

Chain	Residue	Modelled	Actual	Comment	Reference
U	47	CYS	HIS	ENGINEERED MUTATION	UNP Q03405
U	259	CYS	ASN	ENGINEERED MUTATION	UNP Q03405

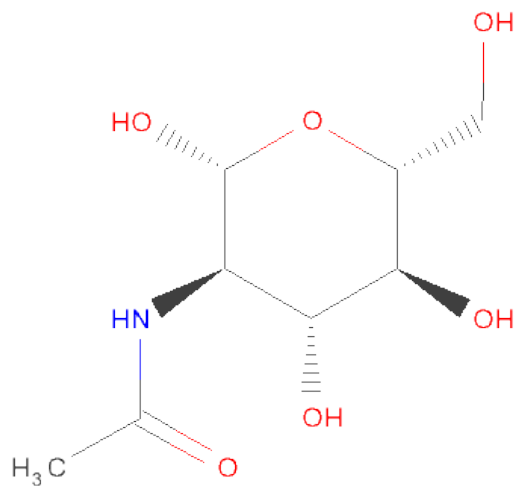
- Molecule 2 is a polymer of unknown type called SUGAR (2-MER).

Mol	Chain	Residues	Atoms				ZeroOcc	AltConf
2	U	2	Total	C	N	O	0	0
			28	16	2	10		

There are 2 discrepancies between the modelled and reference sequences:

Chain	Residue	Modelled	Actual	Comment	Reference
U	47	CYS	HIS	ENGINEERED MUTATION	UNP Q03405
U	259	CYS	ASN	ENGINEERED MUTATION	UNP Q03405

- Molecule 3 is SUGAR (N-ACETYL-D-GLUCOSAMINE) (three-letter code: NAG) (formula: $C_8H_{15}NO_6$).



Mol	Chain	Residues	Atoms				ZeroOcc	AltConf
3	U	1	Total	C	N	O	0	0
			14	8	1	5		

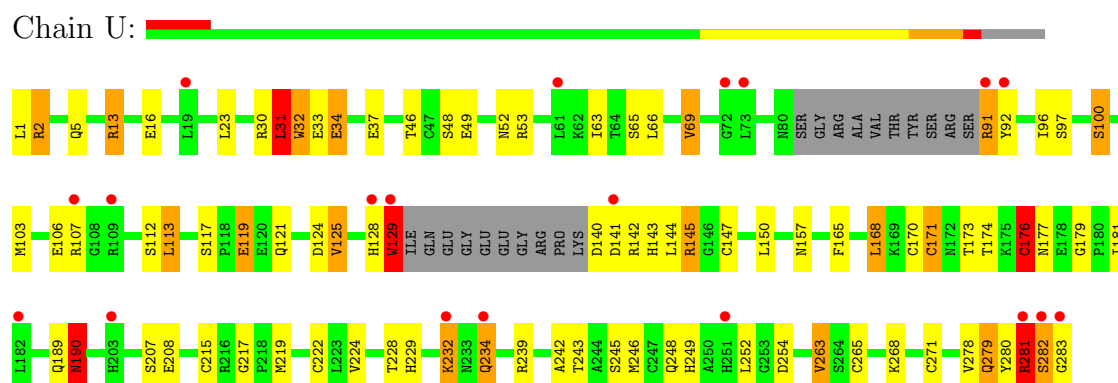
- Molecule 4 is water.

Mol	Chain	Residues	Atoms		ZeroOcc	AltConf
4	U	22	Total	O	0	0
			22	22		

3 Residue-property plots

These plots are drawn for all protein, RNA and DNA chains in the entry. The first graphic for a chain summarises the proportions of errors displayed in the second graphic. The second graphic shows the sequence view annotated by issues in geometry and electron density. Residues are color-coded according to the number of geometric quality criteria for which they contain at least one outlier: green = 0, yellow = 1, orange = 2 and red = 3 or more. A red dot above a residue indicates a poor fit to the electron density ($RSRZ > 2$). Stretches of 2 or more consecutive residues without any outlier are shown as a green connector. Residues present in the sample, but not in the model, are shown in grey.

- Molecule 1: Urokinase plasminogen activator surface receptor



4 Data and refinement statistics

Property	Value	Source
Space group	H 3	Depositor
Cell constants a, b, c, α , β , γ	111.23Å 111.23Å 78.57Å 90.00° 90.00° 120.00°	Depositor
Resolution (Å)	33.04 – 2.39 33.04 – 2.39	Depositor EDS
% Data completeness (in resolution range)	99.0 (33.04-2.39) 99.1 (33.04-2.39)	Depositor EDS
R_{merge}	0.10	Depositor
R_{sym}	(Not available)	Depositor
$\langle I/\sigma(I) \rangle$ ¹	2.52 (at 2.39Å)	Xtriage
Refinement program	REFMAC 5.6.0117	Depositor
R, R_{free}	0.213 , 0.252 0.214 , 0.251	Depositor DCC
R_{free} test set	706 reflections (5.26%)	DCC
Wilson B-factor (Å ²)	54.0	Xtriage
Anisotropy	0.370	Xtriage
Bulk solvent k_{sol} (e/Å ³), B_{sol} (Å ²)	0.31 , 49.1	EDS
Estimated twinning fraction	0.033 for h,-h-k,-l	Xtriage
L-test for twinning	$\langle L \rangle = 0.49$, $\langle L^2 \rangle = 0.32$	Xtriage
Outliers	0 of 14132 reflections	Xtriage
F_o, F_c correlation	0.95	EDS
Total number of atoms	2081	wwPDB-VP
Average B, all atoms (Å ²)	71.0	wwPDB-VP

Xtriage's analysis on translational NCS is as follows: *The largest off-origin peak in the Patterson function is 4.88% of the height of the origin peak. No significant pseudotranslation is detected.*

¹Intensities estimated from amplitudes.

5 Model quality

5.1 Standard geometry

Bond lengths and bond angles in the following residue types are not validated in this section: NAG

The Z score for a bond length (or angle) is the number of standard deviations the observed value is removed from the expected value. A bond length (or angle) with $|Z| > 5$ is considered an outlier worth inspection. RMSZ is the root-mean-square of all Z scores of the bond lengths (or angles).

Mol	Chain	Bond lengths		Bond angles	
		RMSZ	$\# Z > 5$	RMSZ	$\# Z > 5$
1	U	0.84	2/2048 (0.1%)	0.99	8/2756 (0.3%)

All (2) bond length outliers are listed below:

Mol	Chain	Res	Type	Atoms	Z	Observed(Å)	Ideal(Å)
1	U	32	TRP	CD2-CE2	5.20	1.47	1.41
1	U	129	TRP	CD2-CE2	5.13	1.47	1.41

All (8) bond angle outliers are listed below:

Mol	Chain	Res	Type	Atoms	Z	Observed(°)	Ideal(°)
1	U	176	CYS	CA-CB-SG	-8.62	98.49	114.00
1	U	13	ARG	NE-CZ-NH2	-7.99	116.31	120.30
1	U	263	VAL	CB-CA-C	-6.64	98.78	111.40
1	U	239	ARG	NE-CZ-NH2	-6.55	117.02	120.30
1	U	190	ASN	CB-CA-C	-5.96	98.48	110.40
1	U	13	ARG	NE-CZ-NH1	5.93	123.27	120.30
1	U	31	LEU	CA-CB-CG	5.39	127.70	115.30
1	U	150	LEU	CB-CG-CD1	-5.29	102.01	111.00

There are no chirality outliers.

There are no planarity outliers.

5.2 Close contacts

In the following table, the Non-H and H(model) columns list the number of non-hydrogen atoms and hydrogen atoms in the chain respectively. The H(added) column lists the number of hydrogens added by MolProbity. The Clashes column lists the number of clashes within the asymmetric unit, and the number in parentheses is this value normalized per 1000 atoms of the molecule in the

chain. The Symm-Clashes column gives symmetry related clashes, in the same way as for the Clashes column.

Mol	Chain	Non-H	H(model)	H(added)	Clashes	Symm-Clashes
1	U	2017	0	1872	86	0
2	U	28	0	25	3	0
3	U	14	0	13	0	0
4	U	22	0	0	2	0
All	All	2081	0	1910	89	0

Clashscore is defined as the number of clashes calculated for the entry per 1000 atoms (including hydrogens) of the entry. The overall clashscore for this entry is 22.

All (89) close contacts within the same asymmetric unit are listed below.

Atom-1	Atom-2	Distance(Å)	Clash(Å)
1:U:279:GLN:HE22	1:U:283:GLY:CA	1.57	1.18
1:U:280:TYR:HA	1:U:281:ARG:NH1	1.59	1.18
1:U:279:GLN:HE22	1:U:283:GLY:HA2	1.02	1.16
1:U:282:SER:N	1:U:283:GLY:HA2	1.55	1.12
1:U:279:GLN:NE2	1:U:283:GLY:HA2	1.73	1.02
1:U:281:ARG:C	1:U:283:GLY:HA2	1.81	0.98
1:U:281:ARG:C	1:U:283:GLY:CA	2.35	0.94
1:U:232:LYS:HD3	1:U:234:GLN:HE22	1.35	0.92
1:U:280:TYR:HA	1:U:281:ARG:HH11	1.32	0.90
1:U:282:SER:N	1:U:283:GLY:CA	2.37	0.86
1:U:279:GLN:HE22	1:U:283:GLY:C	1.79	0.85
1:U:125:VAL:HB	1:U:168:LEU:HD22	1.57	0.84
1:U:280:TYR:HA	1:U:281:ARG:HH12	1.45	0.82
1:U:49:GLU:HG2	1:U:249:HIS:HB3	1.63	0.81
2:U:501:NAG:O6	2:U:502:NAG:C1	2.29	0.79
1:U:279:GLN:NE2	1:U:283:GLY:C	2.36	0.78
1:U:279:GLN:NE2	1:U:283:GLY:CA	2.38	0.77
1:U:103:MET:HG2	1:U:106:GLU:HG3	1.65	0.76
1:U:279:GLN:HE21	1:U:282:SER:H	1.31	0.76
1:U:279:GLN:NE2	1:U:282:SER:H	1.86	0.74
1:U:232:LYS:HB2	1:U:234:GLN:NE2	2.07	0.70
1:U:279:GLN:NE2	1:U:282:SER:N	2.39	0.69
1:U:103:MET:HG2	1:U:106:GLU:CG	2.26	0.66
1:U:176:CYS:SG	1:U:177:ASN:N	2.68	0.65
1:U:280:TYR:CA	1:U:281:ARG:HH11	2.05	0.65
2:U:501:NAG:O6	2:U:502:NAG:N2	2.30	0.63
1:U:279:GLN:OE1	1:U:283:GLY:C	2.38	0.62
1:U:280:TYR:O	1:U:282:SER:N	2.34	0.60
1:U:281:ARG:CA	1:U:283:GLY:HA2	2.31	0.59

Continued on next page...

Continued from previous page...

Atom-1	Atom-2	Distance(Å)	Clash(Å)
1:U:23:LEU:CD1	1:U:48:SER:HA	2.32	0.59
1:U:113:LEU:HD13	1:U:147:CYS:SG	2.43	0.58
1:U:232:LYS:HD3	1:U:234:GLN:NE2	2.14	0.58
1:U:49:GLU:HG2	1:U:249:HIS:CB	2.32	0.58
1:U:190:ASN:ND2	1:U:217:GLY:O	2.32	0.57
1:U:49:GLU:CG	1:U:249:HIS:HB3	2.33	0.56
1:U:281:ARG:HA	1:U:283:GLY:HA3	1.87	0.56
1:U:281:ARG:CA	1:U:283:GLY:CA	2.84	0.56
1:U:242:ALA:HB1	1:U:246:MET:HB3	1.88	0.56
1:U:281:ARG:HH11	1:U:281:ARG:N	2.03	0.56
1:U:103:MET:HE2	1:U:107:ARG:HG3	1.89	0.55
1:U:281:ARG:HA	1:U:283:GLY:CA	2.37	0.54
1:U:279:GLN:CD	1:U:283:GLY:C	2.66	0.54
1:U:129:TRP:CD2	1:U:129:TRP:C	2.84	0.52
1:U:2:ARG:HB3	1:U:2:ARG:HH11	1.75	0.51
1:U:145:ARG:NH2	1:U:179:GLY:O	2.42	0.51
1:U:32:TRP:CE3	1:U:63:ILE:HD12	2.45	0.51
1:U:279:GLN:OE1	1:U:283:GLY:OXT	2.29	0.50
1:U:281:ARG:C	1:U:283:GLY:HA3	2.30	0.49
1:U:23:LEU:HB2	1:U:46:THR:HG23	1.95	0.49
1:U:268:LYS:O	1:U:271:CYS:SG	2.71	0.49
1:U:23:LEU:HD11	1:U:48:SER:HA	1.95	0.49
1:U:100:SER:O	1:U:103:MET:N	2.44	0.48
1:U:91:ARG:HB3	1:U:92:TYR:CD2	2.48	0.48
1:U:157:ASN:HB3	1:U:245:SER:OG	2.14	0.48
1:U:32:TRP:HB2	1:U:37:GLU:OE1	2.13	0.48
1:U:33:GLU:O	1:U:34:GLU:C	2.52	0.48
1:U:229:HIS:O	1:U:232:LYS:O	2.31	0.47
1:U:128:HIS:HE1	1:U:165:PHE:HD2	1.62	0.47
1:U:106:GLU:CD	1:U:106:GLU:H	2.15	0.47
1:U:173:THR:O	1:U:176:CYS:HB3	2.14	0.47
1:U:32:TRP:HE3	1:U:63:ILE:HD12	1.79	0.47
1:U:96:ILE:HG22	1:U:97:SER:N	2.30	0.47
1:U:124:ASP:CG	1:U:145:ARG:HD2	2.36	0.47
1:U:128:HIS:CE1	1:U:165:PHE:HB3	2.50	0.46
1:U:53:ARG:NE	4:U:605:HOH:O	2.48	0.46
2:U:501:NAG:C6	2:U:502:NAG:HN2	2.28	0.46
1:U:215:CYS:HB3	1:U:219:MET:O	2.16	0.45
1:U:23:LEU:HB2	1:U:46:THR:CG2	2.46	0.45
1:U:52:ASN:OD1	1:U:69:VAL:HA	2.17	0.45
1:U:281:ARG:CA	1:U:283:GLY:HA3	2.47	0.44
1:U:280:TYR:C	1:U:282:SER:N	2.70	0.44

Continued on next page...

Continued from previous page...

Atom-1	Atom-2	Distance(Å)	Clash(Å)
1:U:246:MET:HE2	1:U:252:LEU:HD23	1.99	0.43
1:U:96:ILE:CG2	1:U:97:SER:N	2.81	0.43
1:U:30:ARG:HB2	1:U:65:SER:HB3	2.01	0.43
1:U:2:ARG:NH1	1:U:16:GLU:OE1	2.52	0.43
1:U:31:LEU:HD22	1:U:31:LEU:N	2.34	0.43
1:U:141:ASP:HB3	1:U:143:HIS:CE1	2.54	0.42
1:U:279:GLN:CD	1:U:283:GLY:O	2.58	0.42
1:U:208:GLU:N	1:U:208:GLU:OE1	2.45	0.42
1:U:279:GLN:OE1	1:U:283:GLY:O	2.37	0.42
1:U:280:TYR:C	1:U:281:ARG:HH11	2.22	0.42
1:U:243:THR:HB	4:U:609:HOH:O	2.19	0.42
1:U:121:GLN:HB3	1:U:171:CYS:O	2.20	0.42
1:U:143:HIS:O	1:U:144:LEU:HD23	2.19	0.41
1:U:128:HIS:HB3	1:U:141:ASP:HA	2.02	0.41
1:U:280:TYR:C	1:U:282:SER:H	2.24	0.41
1:U:53:ARG:NH1	1:U:254:ASP:HB3	2.36	0.41
1:U:117:SER:HG	1:U:119:GLU:CD	2.21	0.40
1:U:222:CYS:O	1:U:265:CYS:HA	2.21	0.40

There are no symmetry-related clashes.

5.3 Torsion angles

5.3.1 Protein backbone ⓘ

In the following table, the Percentiles column shows the percent Ramachandran outliers of the chain as a percentile score with respect to all X-ray entries followed by that with respect to entries of similar resolution. The Analysed column shows the number of residues for which the backbone conformation was analysed, and the total number of residues.

Mol	Chain	Analysed	Favoured	Allowed	Outliers	Percentiles	
1	U	257/283 (91%)	245 (95%)	10 (4%)	2 (1%)	27	39

All (2) Ramachandran outliers are listed below:

Mol	Chain	Res	Type
1	U	281	ARG
1	U	34	GLU

5.3.2 Protein sidechains ⓘ

In the following table, the Percentiles column shows the percent sidechain outliers of the chain as a percentile score with respect to all X-ray entries followed by that with respect to entries of similar resolution. The Analysed column shows the number of residues for which the sidechain conformation was analysed, and the total number of residues.

Mol	Chain	Analysed	Rotameric	Outliers	Percentiles
1	U	234/250 (94%)	198 (85%)	36 (15%)	4 4

All (36) residues with a non-rotameric sidechain are listed below:

Mol	Chain	Res	Type
1	U	1	LEU
1	U	2	ARG
1	U	5	GLN
1	U	13	ARG
1	U	31	LEU
1	U	66	LEU
1	U	69	VAL
1	U	91	ARG
1	U	100	SER
1	U	112	SER
1	U	113	LEU
1	U	119	GLU
1	U	125	VAL
1	U	129	TRP
1	U	140	ASP
1	U	142	ARG
1	U	145	ARG
1	U	168	LEU
1	U	170	CYS
1	U	171	CYS
1	U	174	THR
1	U	176	CYS
1	U	181	ILE
1	U	189	GLN
1	U	190	ASN
1	U	207	SER
1	U	224	VAL
1	U	228	THR
1	U	232	LYS
1	U	234	GLN
1	U	248	GLN

Continued on next page...

Continued from previous page...

Mol	Chain	Res	Type
1	U	263	VAL
1	U	278	VAL
1	U	279	GLN
1	U	281	ARG
1	U	282	SER

Some sidechains can be flipped to improve hydrogen bonding and reduce clashes. All (3) such sidechains are listed below:

Mol	Chain	Res	Type
1	U	128	HIS
1	U	234	GLN
1	U	279	GLN

5.3.3 RNA ⓘ

There are no RNA chains in this entry.

5.4 Non-standard residues in protein, DNA, RNA chains ⓘ

There are no non-standard protein/DNA/RNA residues in this entry.

5.5 Carbohydrates ⓘ

2 carbohydrates are modelled in this entry.

In the following table, the Counts columns list the number of bonds (or angles) for which Mogul statistics could be retrieved, the number of bonds (or angles) that are observed in the model and the number of bonds (or angles) that are defined in the chemical component dictionary. The Link column lists molecule types, if any, to which the group is linked. The Z score for a bond length (or angle) is the number of standard deviations the observed value is removed from the expected value. A bond length (or angle) with $|Z| > 2$ is considered an outlier worth inspection. RMSZ is the root-mean-square of all Z scores of the bond lengths (or angles).

Mol	Type	Chain	Res	Link	Bond lengths			Bond angles		
					Counts	RMSZ	$\# Z > 2$	Counts	RMSZ	$\# Z > 2$
2	NAG	U	501	1,2	12,14,15	0.86	1 (8%)	15,19,21	2.12	1 (6%)
2	NAG	U	502	2	12,14,15	0.74	1 (8%)	15,19,21	1.93	5 (33%)

In the following table, the Chirals column lists the number of chiral outliers, the number of chiral centers analysed, the number of these observed in the model and the number defined in the chemical

component dictionary. Similar counts are reported in the Torsion and Rings columns. '-' means no outliers of that kind were identified.

Mol	Type	Chain	Res	Link	Chirals	Torsions	Rings
2	NAG	U	501	1,2	-	0/6/23/26	0/1/1/1
2	NAG	U	502	2	-	0/6/23/26	0/1/1/1

All (2) bond length outliers are listed below:

Mol	Chain	Res	Type	Atoms	Z	Observed(Å)	Ideal(Å)
2	U	501	NAG	O5-C5	-2.15	1.41	1.45
2	U	502	NAG	C2-N2	-2.00	1.44	1.46

All (6) bond angle outliers are listed below:

Mol	Chain	Res	Type	Atoms	Z	Observed(°)	Ideal(°)
2	U	501	NAG	C2-N2-C7	-7.70	110.16	123.09
2	U	502	NAG	C3-C2-N2	-4.08	105.55	111.76
2	U	502	NAG	C2-N2-C7	-3.49	117.23	123.09
2	U	502	NAG	C3-C4-C5	2.43	114.54	110.20
2	U	502	NAG	C6-C5-C4	-2.41	107.17	113.00
2	U	502	NAG	O3-C3-C4	-2.17	105.49	110.35

There are no chirality outliers.

There are no torsion outliers.

There are no ring outliers.

5.6 Ligand geometry ⓘ

1 ligand is modelled in this entry.

In the following table, the Counts columns list the number of bonds (or angles) for which Mogul statistics could be retrieved, the number of bonds (or angles) that are observed in the model and the number of bonds (or angles) that are defined in the chemical component dictionary. The Link column lists molecule types, if any, to which the group is linked. The Z score for a bond length (or angle) is the number of standard deviations the observed value is removed from the expected value. A bond length (or angle) with $|Z| > 2$ is considered an outlier worth inspection. RMSZ is the root-mean-square of all Z scores of the bond lengths (or angles).

Mol	Type	Chain	Res	Link	Bond lengths			Bond angles		
					Counts	RMSZ	$\# Z > 2$	Counts	RMSZ	$\# Z > 2$
3	NAG	U	503	1	12,14,15	1.54	3 (25%)	15,19,21	2.12	5 (33%)

In the following table, the Chirals column lists the number of chiral outliers, the number of chiral centers analysed, the number of these observed in the model and the number defined in the chemical component dictionary. Similar counts are reported in the Torsion and Rings columns. '-' means no outliers of that kind were identified.

Mol	Type	Chain	Res	Link	Chirals	Torsions	Rings
3	NAG	U	503	1	-	0/6/23/26	0/1/1/1

All (3) bond length outliers are listed below:

Mol	Chain	Res	Type	Atoms	Z	Observed(Å)	Ideal(Å)
3	U	503	NAG	O5-C5	-2.79	1.40	1.45
3	U	503	NAG	C7-N2	2.66	1.45	1.34
3	U	503	NAG	O3-C3	-2.28	1.37	1.43

All (5) bond angle outliers are listed below:

Mol	Chain	Res	Type	Atoms	Z	Observed(°)	Ideal(°)
3	U	503	NAG	O5-C5-C4	5.15	117.18	110.65
3	U	503	NAG	O5-C5-C6	3.57	110.73	106.98
3	U	503	NAG	C6-C5-C4	-2.75	106.36	113.00
3	U	503	NAG	C8-C7-N2	2.19	120.38	116.11
3	U	503	NAG	C3-C2-N2	2.16	115.05	111.76

There are no chirality outliers.

There are no torsion outliers.

There are no ring outliers.

5.7 Other polymers ⓘ

There are no such residues in this entry.

5.8 Polymer linkage issues

There are no chain breaks in this entry.

6 Fit of model and data ⓘ

6.1 Protein, DNA and RNA chains ⓘ

In the following table, the column labelled ‘#RSRZ> 2’ contains the number (and percentage) of RSRZ outliers, followed by percent RSRZ outliers for the chain as percentile scores relative to all X-ray entries and entries of similar resolution. The OWAB column contains the minimum, median, 95th percentile and maximum values of the occupancy-weighted average B-factor per residue. The column labelled ‘Q< 0.9’ lists the number of (and percentage) of residues with an average occupancy less than 0.9.

Mol	Chain	Analysed	<RSRZ>	#RSRZ>2	OWAB(Å ²)	Q<0.9
1	U	263/283 (92%)	0.51	19 (7%) 15 13	41, 64, 106, 140	0

All (19) RSRZ outliers are listed below:

Mol	Chain	Res	Type	RSRZ
1	U	19	LEU	5.9
1	U	283	GLY	5.5
1	U	109	ARG	4.6
1	U	182	LEU	4.0
1	U	282	SER	3.9
1	U	234	GLN	3.7
1	U	107	ARG	3.7
1	U	281	ARG	3.6
1	U	61	LEU	3.5
1	U	92	TYR	3.3
1	U	129	TRP	3.0
1	U	72	GLY	2.8
1	U	251	HIS	2.5
1	U	141	ASP	2.3
1	U	203	HIS	2.2
1	U	73	LEU	2.1
1	U	128	HIS	2.1
1	U	91	ARG	2.0
1	U	232	LYS	2.0

6.2 Non-standard residues in protein, DNA, RNA chains ⓘ

There are no non-standard protein/DNA/RNA residues in this entry.

6.3 Carbohydrates ⓘ

In the following table, the Atoms column lists the number of modelled atoms in the group and the number defined in the chemical component dictionary. LLDF column lists the quality of electron density of the group with respect to its neighbouring residues in protein, DNA or RNA chains. The B-factors column lists the minimum, median, 95th percentile and maximum values of B factors of atoms in the group. The column labelled 'Q < 0.9' lists the number of atoms with occupancy less than 0.9.

Mol	Type	Chain	Res	Atoms	RSR	LLDF	B-factors(Å ²)	Q<0.9
2	NAG	U	502	14/15	0.19	-0.19	117,141,160,162	0
2	NAG	U	501	14/15	0.12	-0.50	99,115,141,149	0

6.4 Ligands ⓘ

In the following table, the Atoms column lists the number of modelled atoms in the group and the number defined in the chemical component dictionary. LLDF column lists the quality of electron density of the group with respect to its neighbouring residues in protein, DNA or RNA chains. The B-factors column lists the minimum, median, 95th percentile and maximum values of B factors of atoms in the group. The column labelled 'Q < 0.9' lists the number of atoms with occupancy less than 0.9.

Mol	Type	Chain	Res	Atoms	RSR	LLDF	B-factors(Å ²)	Q<0.9
3	NAG	U	503	14/15	0.24	0.10	99,111,118,131	0

6.5 Other polymers ⓘ

There are no such residues in this entry.