



Full wwPDB X-ray Structure Validation Report

Feb 28, 2014 – 12:10 PM GMT

PDB ID : 1UC2
Title : Hypothetical Extein Protein of PH1602 from Pyrococcus horikoshii
Authors : Okada, C.; Maegawa, Y.; Yao, M.; Tanaka, I.
Deposited on : 2003-04-08
Resolution : 2.15 Å(reported)

This is a full wwPDB validation report for a publicly released PDB entry.
We welcome your comments at validation@mail.wwpdb.org
A user guide is available at <http://wwpdb.org/ValidationPDFNotes.html>

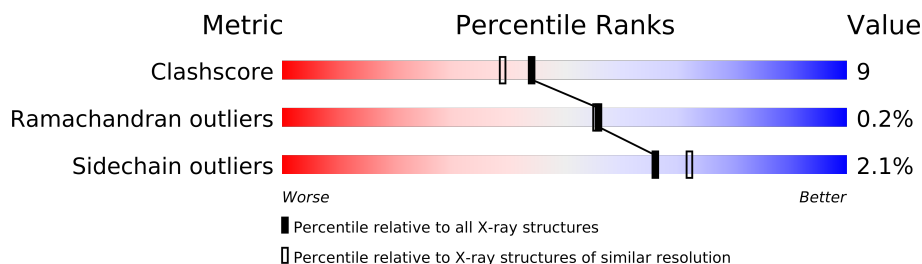
The following versions of software and data (see [references](#)) were used in the production of this report:

MolProbity : 4.02b-467
Mogul : 1.15 2013
Xtriage (Phenix) : NOT EXECUTED
EDS : NOT EXECUTED
Percentile statistics : 21963
Ideal geometry (proteins) : Engh & Huber (2001)
Ideal geometry (DNA, RNA) : Parkinson et. al. (1996)
Validation Pipeline (wwPDB-VP) : stable22683

1 Overall quality at a glance

The reported resolution of this entry is 2.15 Å.

Percentile scores (ranging between 0-100) for global validation metrics of the entry are shown in the following graphic. The table shows the number of entries on which the scores are based.



Metric	Whole archive (#Entries)	Similar resolution (#Entries, resolution range(Å))
Clashscore	79885	1299 (2.18-2.14)
Ramachandran outliers	78287	1272 (2.18-2.14)
Sidechain outliers	78261	1272 (2.18-2.14)

The table below summarises the geometric issues observed across the polymeric chains and their fit to the electron density. The red, orange, yellow and green segments on the lower bar indicate the fraction of residues that contain outliers for ≥ 3 , 2, 1 and 0 types of geometric quality criteria. The upper red bar (where present) indicates the fraction of residues that have poor fit to the electron density.

Note EDS was not executed.

Mol	Chain	Length	Quality of chain
1	A	481	
1	B	481	

2 Entry composition i

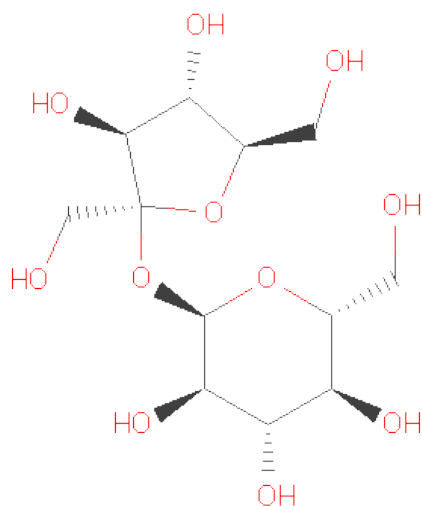
There are 4 unique types of molecules in this entry. The entry contains 8480 atoms, of which 0 are hydrogen and 0 are deuterium.

In the tables below, the ZeroOcc column contains the number of atoms modelled with zero occupancy, the AltConf column contains the number of residues with at least one atom in alternate conformation and the Trace column contains the number of residues modelled with at most 2 atoms.

- Molecule 1 is a protein called hypothetical protein PH1602.

Mol	Chain	Residues	Atoms					ZeroOcc	AltConf	Trace
1	A	480	Total	C	N	O	S	0	0	0
			3759	2370	693	680	16			
1	B	480	Total	C	N	O	S	0	0	0
			3759	2370	693	680	16			

- Molecule 2 is SUGAR (SUCROSE) (three-letter code: SUC) (formula: $C_{12}H_{22}O_{11}$).



Mol	Chain	Residues	Atoms			ZeroOcc	AltConf
2	A	1	Total	C	O	0	0
			23	12	11		
2	B	1	Total	C	O	0	0
			23	12	11		

- Molecule 3 is SULFATE ION (three-letter code: SO4) (formula: O_4S).



Mol	Chain	Residues	Atoms			ZeroOcc	AltConf
3	A	1	Total	O	S	0	0
			5	4	1		
3	A	1	Total	O	S	0	0
			5	4	1		
3	A	1	Total	O	S	0	0
			5	4	1		
3	B	1	Total	O	S	0	0
			5	4	1		
3	A	1	Total	O	S	0	0
			5	4	1		
3	B	1	Total	O	S	0	0
			5	4	1		
3	A	1	Total	O	S	0	0
			5	4	1		
3	B	1	Total	O	S	0	0
			5	4	1		
3	B	1	Total	O	S	0	0
			5	4	1		

- Molecule 4 is water.

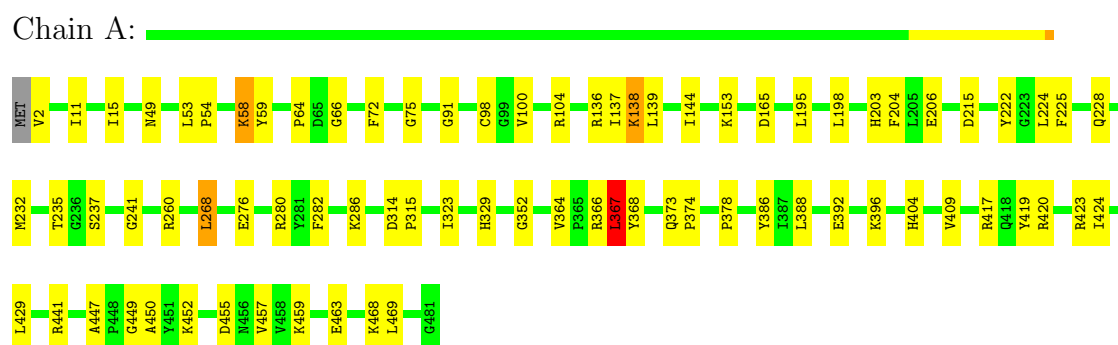
Mol	Chain	Residues	Atoms		ZeroOcc	AltConf
4	A	447	Total	O	0	0
			447	447		
4	B	424	Total	O	0	0
			424	424		

3 Residue-property plots

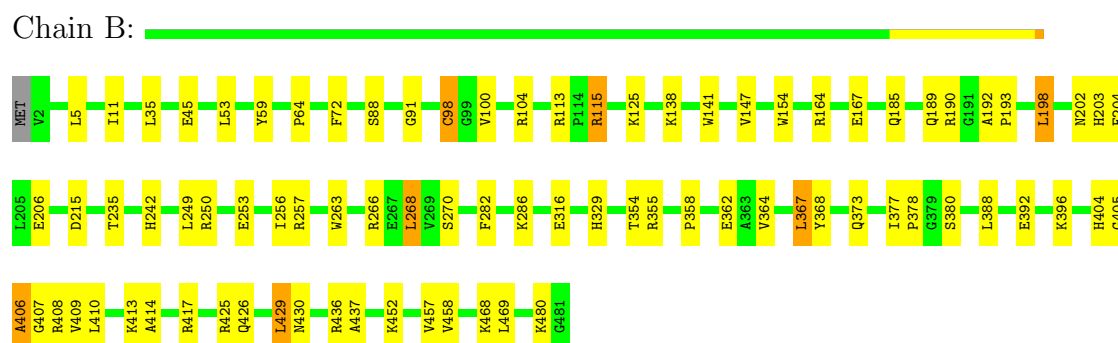
These plots are drawn for all protein, RNA and DNA chains in the entry. The first graphic for a chain summarises the proportions of errors displayed in the second graphic. The second graphic shows the sequence view annotated by issues in geometry and electron density. Residues are color-coded according to the number of geometric quality criteria for which they contain at least one outlier: green = 0, yellow = 1, orange = 2 and red = 3 or more. A red dot above a residue indicates a poor fit to the electron density ($RSRZ > 2$). Stretches of 2 or more consecutive residues without any outlier are shown as a green connector. Residues present in the sample, but not in the model, are shown in grey.

Note EDS was not executed.

- Molecule 1: hypothetical protein PH1602



- Molecule 1: hypothetical protein PH1602



4 Data and refinement statistics

Xtriage (Phenix) and EDS were not executed - this section will therefore be incomplete.

Property	Value	Source
Space group	P 21 21 21	Depositor
Cell constants a, b, c, α , β , γ	81.25Å 137.59Å 148.50Å 90.00° 90.00° 90.00°	Depositor
Resolution (Å)	10.00 – 2.15	Depositor
% Data completeness (in resolution range)	99.7 (10.00-2.15)	Depositor
R_{merge}	0.09	Depositor
R_{sym}	0.08	Depositor
Refinement program	CNS	Depositor
R, R_{free}	0.168 , 0.204	Depositor
Estimated twinning fraction	No twinning to report.	Xtriage
Total number of atoms	8480	wwPDB-VP
Average B, all atoms (Å ²)	28.0	wwPDB-VP

5 Model quality

5.1 Standard geometry

Bond lengths and bond angles in the following residue types are not validated in this section: SUC, SO4

The Z score for a bond length (or angle) is the number of standard deviations the observed value is removed from the expected value. A bond length (or angle) with $|Z| > 5$ is considered an outlier worth inspection. RMSZ is the root-mean-square of all Z scores of the bond lengths (or angles).

Mol	Chain	Bond lengths		Bond angles	
		RMSZ	$\# Z > 5$	RMSZ	$\# Z > 5$
1	A	0.56	0/3836	0.75	3/5175 (0.1%)
1	B	0.59	0/3836	0.74	1/5175 (0.0%)
All	All	0.57	0/7672	0.74	4/10350 (0.0%)

There are no bond length outliers.

All (4) bond angle outliers are listed below:

Mol	Chain	Res	Type	Atoms	Z	Observed(°)	Ideal(°)
1	B	98	CYS	N-CA-C	-7.20	91.56	111.00
1	A	98	CYS	N-CA-C	-6.56	93.30	111.00
1	A	367	LEU	CA-CB-CG	5.13	127.09	115.30
1	A	15	ILE	N-CA-C	-5.02	97.45	111.00

There are no chirality outliers.

There are no planarity outliers.

5.2 Close contacts

In the following table, the Non-H and H(model) columns list the number of non-hydrogen atoms and hydrogen atoms in the chain respectively. The H(added) column lists the number of hydrogens added by MolProbity. The Clashes column lists the number of clashes within the asymmetric unit, and the number in parentheses is this value normalized per 1000 atoms of the molecule in the chain. The Symm-Clashes column gives symmetry related clashes, in the same way as for the Clashes column.

Mol	Chain	Non-H	H(model)	H(added)	Clashes	Symm-Clashes
1	A	3759	0	3783	62	0
1	B	3759	0	3783	74	0
2	A	23	0	22	0	0

Continued on next page...

Continued from previous page...

Mol	Chain	Non-H	H(model)	H(added)	Clashes	Symm-Clashes
2	B	23	0	22	0	0
3	A	25	0	0	2	0
3	B	20	0	0	0	0
4	A	447	0	0	6	0
4	B	424	0	0	9	0
All	All	8480	0	7610	131	0

Clashscore is defined as the number of clashes calculated for the entry per 1000 atoms (including hydrogens) of the entry. The overall clashscore for this entry is 9.

All (131) close contacts within the same asymmetric unit are listed below.

Atom-1	Atom-2	Distance(Å)	Clash(Å)
1:B:53:LEU:HD11	1:B:268:LEU:HD11	1.34	1.05
1:B:329:HIS:HD2	1:B:404:HIS:CD2	1.77	1.01
1:B:329:HIS:CD2	1:B:404:HIS:CD2	2.60	0.90
1:B:100:VAL:HG21	1:B:378:PRO:HG3	1.56	0.87
1:B:185:GLN:HG2	1:B:189:GLN:HE21	1.39	0.85
1:A:423:ARG:HH11	1:A:423:ARG:HA	1.52	0.74
1:B:53:LEU:HD11	1:B:268:LEU:CD1	2.16	0.71
1:B:377:ILE:HG23	1:B:405:GLY:HA3	1.74	0.70
1:A:138:LYS:HZ1	1:B:125:LYS:HE3	1.58	0.68
1:A:64:PRO:HB2	1:A:457:VAL:HG13	1.76	0.67
1:B:215:ASP:OD2	1:B:468:LYS:HE2	1.95	0.66
1:A:409:VAL:HG12	1:A:450:ALA:O	1.96	0.65
1:A:366:ARG:HD3	3:A:1103:SO4:O2	1.95	0.65
1:A:138:LYS:HZ3	1:B:125:LYS:HG3	1.62	0.65
1:B:185:GLN:HG2	1:B:189:GLN:NE2	2.12	0.64
1:A:139:LEU:HD13	1:A:144:ILE:HG22	1.78	0.64
1:A:136:ARG:HH12	1:B:138:LYS:HG2	1.63	0.64
1:A:138:LYS:C	1:A:138:LYS:HD3	2.19	0.62
1:A:388:LEU:CD2	1:A:469:LEU:HD23	2.30	0.61
1:B:329:HIS:CD2	1:B:404:HIS:HD2	2.17	0.61
1:A:53:LEU:HD11	1:A:268:LEU:HD21	1.83	0.61
1:A:276:GLU:OE2	1:A:280:ARG:HD2	2.02	0.59
1:A:409:VAL:HG12	1:A:450:ALA:C	2.22	0.59
1:B:409:VAL:O	1:B:410:LEU:HD23	2.03	0.59
1:B:190:ARG:HD2	4:B:2804:HOH:O	2.02	0.58
1:A:429:LEU:HD23	1:A:429:LEU:O	2.04	0.58
1:A:204:PHE:CD1	1:A:206:GLU:HG3	2.38	0.58
1:B:367:LEU:HD13	1:B:368:TYR:CD2	2.38	0.57
1:B:198:LEU:HD12	1:B:235:THR:HG21	1.85	0.57
1:B:425:ARG:HD3	4:B:2422:HOH:O	2.04	0.56

Continued on next page...

Continued from previous page...

Atom-1	Atom-2	Distance(Å)	Clash(Å)
1:B:185:GLN:HE21	1:B:189:GLN:NE2	2.03	0.56
1:A:417:ARG:HH11	1:A:417:ARG:HG3	1.70	0.56
1:A:49:ASN:HB3	1:A:268:LEU:HD12	1.88	0.56
1:B:202:ASN:ND2	4:B:2075:HOH:O	2.40	0.55
1:A:392:GLU:HG3	1:A:396:LYS:NZ	2.21	0.54
1:B:413:LYS:NZ	1:B:417:ARG:HH12	2.06	0.54
1:B:141:TRP:CH2	1:B:185:GLN:HG3	2.43	0.54
1:B:458:VAL:CG1	1:B:469:LEU:HD21	2.38	0.54
1:B:250:ARG:HH11	1:B:250:ARG:HG2	1.73	0.54
1:B:249:LEU:O	1:B:253:GLU:HG3	2.08	0.53
1:A:392:GLU:HG3	1:A:396:LYS:HZ3	1.74	0.53
1:B:242:HIS:HD2	4:B:2627:HOH:O	1.91	0.53
1:B:256:ILE:HG23	1:B:257:ARG:N	2.24	0.53
1:A:138:LYS:NZ	1:B:125:LYS:HG3	2.24	0.52
1:A:420:ARG:HG3	1:A:420:ARG:HH11	1.75	0.52
1:B:53:LEU:HD21	1:B:268:LEU:HD12	1.91	0.52
1:B:413:LYS:HZ3	1:B:417:ARG:HH12	1.58	0.52
1:A:260:ARG:NH1	4:A:2506:HOH:O	2.41	0.51
1:A:282:PHE:CE1	1:A:286:LYS:HE3	2.45	0.51
1:A:260:ARG:NH1	4:A:2678:HOH:O	2.43	0.51
1:A:367:LEU:HD13	1:A:368:TYR:CD2	2.45	0.51
1:B:204:PHE:CD1	1:B:206:GLU:HG3	2.46	0.51
1:B:115:ARG:HG2	1:B:115:ARG:HH11	1.75	0.51
1:B:64:PRO:HB2	1:B:457:VAL:HG13	1.92	0.51
1:B:5:LEU:HD13	1:B:35:LEU:HD21	1.93	0.50
1:B:141:TRP:CZ3	1:B:185:GLN:HG3	2.47	0.50
1:A:329:HIS:CE1	1:A:404:HIS:CD2	3.00	0.50
1:B:263:TRP:CZ2	1:B:266:ARG:HA	2.47	0.50
1:A:100:VAL:HG23	1:A:329:HIS:CE1	2.47	0.49
1:B:164:ARG:O	1:B:167:GLU:HG2	2.13	0.49
1:A:66:GLY:O	1:A:452:LYS:NZ	2.46	0.49
1:B:413:LYS:NZ	4:B:2510:HOH:O	2.45	0.49
1:B:388:LEU:HD22	1:B:469:LEU:HD23	1.95	0.49
1:A:198:LEU:HD21	1:A:204:PHE:HA	1.94	0.49
1:A:2:VAL:N	4:A:2365:HOH:O	2.46	0.49
1:B:367:LEU:HD13	1:B:368:TYR:CE2	2.48	0.48
1:B:256:ILE:HG23	1:B:257:ARG:HG3	1.94	0.48
1:A:72:PHE:CG	1:A:91:GLY:HA2	2.48	0.48
1:B:45:GLU:HG2	4:B:2350:HOH:O	2.13	0.48
1:B:113:ARG:HD3	4:B:2508:HOH:O	2.12	0.48
1:A:396:LYS:HE3	4:A:2796:HOH:O	2.13	0.48
1:B:192:ALA:HB3	1:B:193:PRO:HD3	1.95	0.48

Continued on next page...

Continued from previous page...

Atom-1	Atom-2	Distance(Å)	Clash(Å)
1:A:53:LEU:HD11	1:A:268:LEU:CD2	2.45	0.47
1:B:429:LEU:HD23	1:B:429:LEU:O	2.15	0.46
1:A:75:GLY:HA2	1:A:352:GLY:O	2.15	0.46
1:A:423:ARG:NH1	1:A:423:ARG:HA	2.25	0.46
1:A:388:LEU:HD22	1:A:469:LEU:HD23	1.97	0.46
1:B:185:GLN:HE21	1:B:189:GLN:HE22	1.64	0.46
1:B:88:SER:HB2	1:B:270:SER:HB3	1.97	0.46
1:B:388:LEU:CD2	1:B:469:LEU:HD23	2.47	0.45
1:B:354:THR:HG22	1:B:355:ARG:O	2.16	0.45
1:B:202:ASN:HD21	1:B:380:SER:HA	1.81	0.45
1:A:203:HIS:CD2	1:A:235:THR:HA	2.52	0.45
1:B:115:ARG:NH1	1:B:115:ARG:HG2	2.31	0.45
1:B:164:ARG:CZ	1:B:316:GLU:OE2	2.65	0.45
1:B:282:PHE:CE1	1:B:286:LYS:HE3	2.52	0.45
1:B:250:ARG:NH1	1:B:250:ARG:HG2	2.32	0.44
1:A:424:ILE:HG13	1:A:447:ALA:HB2	1.98	0.44
1:B:426:GLN:HE21	1:B:430:ASN:CG	2.21	0.44
1:B:426:GLN:HE21	1:B:430:ASN:ND2	2.16	0.44
1:A:419:TYR:OH	1:A:449:GLY:HA3	2.18	0.44
1:A:276:GLU:OE2	1:A:280:ARG:CD	2.66	0.44
1:A:364:VAL:HG22	1:A:373:GLN:HB2	1.99	0.43
1:A:417:ARG:HG3	1:A:417:ARG:NH1	2.33	0.43
1:A:222:TYR:CE2	1:A:374:PRO:HG3	2.53	0.43
1:B:98:CYS:SG	1:B:203:HIS:HE1	2.41	0.43
1:B:437:ALA:HA	1:B:480:LYS:O	2.18	0.43
1:A:139:LEU:HD12	1:A:195:LEU:HD23	1.99	0.43
1:B:408:ARG:N	4:B:2585:HOH:O	2.52	0.42
1:A:329:HIS:ND1	1:A:404:HIS:CD2	2.87	0.42
1:A:441:ARG:HG2	3:A:1105:SO4:O3	2.18	0.42
1:B:396:LYS:HE3	4:B:2452:HOH:O	2.18	0.42
1:A:459:LYS:HE2	1:A:463:GLU:OE2	2.18	0.42
1:A:367:LEU:HD13	1:A:368:TYR:CG	2.55	0.42
1:B:100:VAL:CG2	1:B:378:PRO:HG3	2.40	0.42
1:B:263:TRP:CE2	1:B:266:ARG:HA	2.55	0.42
1:B:72:PHE:CG	1:B:91:GLY:HA2	2.54	0.42
1:A:138:LYS:NZ	1:B:125:LYS:HE3	2.31	0.42
1:A:53:LEU:HA	1:A:54:PRO:HD3	1.85	0.42
1:A:204:PHE:C	1:A:204:PHE:CD1	2.93	0.41
1:A:237:SER:OG	1:A:241:GLY:HA3	2.19	0.41
1:B:364:VAL:HG22	1:B:373:GLN:HB2	2.01	0.41
1:A:58:LYS:NZ	1:A:396:LYS:O	2.53	0.41
1:A:224:LEU:HA	1:A:228:GLN:OE1	2.21	0.41

Continued on next page...

Continued from previous page...

Atom-1	Atom-2	Distance(Å)	Clash(Å)
1:B:426:GLN:NE2	1:B:430:ASN:OD1	2.53	0.41
1:A:137:ILE:HG23	4:A:2426:HOH:O	2.20	0.41
1:A:153:LYS:HD2	4:A:2467:HOH:O	2.19	0.41
1:B:436:ARG:HD2	1:B:436:ARG:HA	1.98	0.41
1:A:165:ASP:HB3	1:A:323:ILE:HD12	2.03	0.41
1:A:386:TYR:OH	1:A:455:ASP:OD1	2.31	0.41
1:A:232:MET:SD	1:A:378:PRO:HA	2.60	0.41
1:B:413:LYS:HG3	1:B:414:ALA:N	2.35	0.41
1:A:215:ASP:OD2	1:A:468:LYS:HE3	2.19	0.41
1:B:147:VAL:HG22	1:B:154:TRP:CD2	2.56	0.41
1:A:225:PHE:CZ	1:A:228:GLN:HB2	2.56	0.41
1:B:407:GLY:C	1:B:452:LYS:HD3	2.42	0.40
1:A:314:ASP:HA	1:A:315:PRO:HD3	1.96	0.40
1:B:329:HIS:HD2	1:B:404:HIS:CG	2.30	0.40
1:B:198:LEU:HD12	1:B:235:THR:CG2	2.51	0.40
1:B:405:GLY:O	1:B:406:ALA:HB2	2.22	0.40
1:B:392:GLU:HG3	1:B:396:LYS:NZ	2.37	0.40

There are no symmetry-related clashes.

5.3 Torsion angles

5.3.1 Protein backbone ⓘ

In the following table, the Percentiles column shows the percent Ramachandran outliers of the chain as a percentile score with respect to all X-ray entries followed by that with respect to entries of similar resolution. The Analysed column shows the number of residues for which the backbone conformation was analysed, and the total number of residues.

Mol	Chain	Analysed	Favoured	Allowed	Outliers	Percentiles	
1	A	478/481 (99%)	464 (97%)	13 (3%)	1 (0%)	56	55
1	B	478/481 (99%)	463 (97%)	14 (3%)	1 (0%)	56	55
All	All	956/962 (99%)	927 (97%)	27 (3%)	2 (0%)	56	55

All (2) Ramachandran outliers are listed below:

Mol	Chain	Res	Type
1	B	406	ALA
1	A	58	LYS

5.3.2 Protein sidechains ⓘ

In the following table, the Percentiles column shows the percent sidechain outliers of the chain as a percentile score with respect to all X-ray entries followed by that with respect to entries of similar resolution. The Analysed column shows the number of residues for which the sidechain conformation was analysed, and the total number of residues.

Mol	Chain	Analysed	Rotameric	Outliers	Percentiles	
1	A	389/390 (100%)	383 (98%)	6 (2%)	76	83
1	B	389/390 (100%)	379 (97%)	10 (3%)	59	62
All	All	778/780 (100%)	762 (98%)	16 (2%)	66	72

All (16) residues with a non-rotameric sidechain are listed below:

Mol	Chain	Res	Type
1	A	11	ILE
1	A	59	TYR
1	A	104	ARG
1	A	138	LYS
1	A	268	LEU
1	A	367	LEU
1	B	11	ILE
1	B	59	TYR
1	B	104	ARG
1	B	115	ARG
1	B	198	LEU
1	B	268	LEU
1	B	358	PRO
1	B	362	GLU
1	B	367	LEU
1	B	429	LEU

Some sidechains can be flipped to improve hydrogen bonding and reduce clashes. All (14) such sidechains are listed below:

Mol	Chain	Res	Type
1	A	203	HIS
1	A	234	HIS
1	A	329	HIS
1	A	404	HIS
1	A	418	GLN
1	B	67	HIS
1	B	189	GLN
1	B	202	ASN

Continued on next page...

Continued from previous page...

Mol	Chain	Res	Type
1	B	203	HIS
1	B	242	HIS
1	B	329	HIS
1	B	404	HIS
1	B	418	GLN
1	B	426	GLN

5.3.3 RNA ⓘ

There are no RNA chains in this entry.

5.4 Non-standard residues in protein, DNA, RNA chains ⓘ

There are no non-standard protein/DNA/RNA residues in this entry.

5.5 Carbohydrates ⓘ

There are no carbohydrates in this entry.

5.6 Ligand geometry ⓘ

11 ligands are modelled in this entry.

In the following table, the Counts columns list the number of bonds (or angles) for which Mogul statistics could be retrieved, the number of bonds (or angles) that are observed in the model and the number of bonds (or angles) that are defined in the chemical component dictionary. The Link column lists molecule types, if any, to which the group is linked. The Z score for a bond length (or angle) is the number of standard deviations the observed value is removed from the expected value. A bond length (or angle) with $|Z| > 2$ is considered an outlier worth inspection. RMSZ is the root-mean-square of all Z scores of the bond lengths (or angles).

Mol	Type	Chain	Res	Link	Bond lengths			Bond angles		
					Counts	RMSZ	$\# Z > 2$	Counts	RMSZ	$\# Z > 2$
2	SUC	A	1001	-	24,24,24	1.18	3 (12%)	36,36,36	0.78	0
3	SO4	A	1101	-	4,4,4	0.55	0	6,6,6	0.83	0
3	SO4	A	1102	-	4,4,4	0.33	0	6,6,6	0.23	0
3	SO4	A	1103	-	4,4,4	0.25	0	6,6,6	0.17	0
3	SO4	A	1105	-	4,4,4	0.23	0	6,6,6	0.13	0
3	SO4	A	1107	-	4,4,4	0.24	0	6,6,6	0.09	0
2	SUC	B	1002	-	24,24,24	1.17	3 (12%)	36,36,36	0.82	0

Mol	Type	Chain	Res	Link	Bond lengths			Bond angles		
					Counts	RMSZ	# Z > 2	Counts	RMSZ	# Z > 2
3	SO4	B	1104	-	4,4,4	0.18	0	6,6,6	0.20	0
3	SO4	B	1106	-	4,4,4	0.29	0	6,6,6	0.10	0
3	SO4	B	1108	-	4,4,4	0.30	0	6,6,6	0.08	0
3	SO4	B	1109	-	4,4,4	0.36	0	6,6,6	0.15	0

In the following table, the Chirals column lists the number of chiral outliers, the number of chiral centers analysed, the number of these observed in the model and the number defined in the chemical component dictionary. Similar counts are reported in the Torsion and Rings columns. '-' means no outliers of that kind were identified.

Mol	Type	Chain	Res	Link	Chirals	Torsions	Rings
2	SUC	A	1001	-	-	0/12/51/51	0/2/2/2
3	SO4	A	1101	-	-	0/0/0/0	0/0/0/0
3	SO4	A	1102	-	-	0/0/0/0	0/0/0/0
3	SO4	A	1103	-	-	0/0/0/0	0/0/0/0
3	SO4	A	1105	-	-	0/0/0/0	0/0/0/0
3	SO4	A	1107	-	-	0/0/0/0	0/0/0/0
2	SUC	B	1002	-	-	0/12/51/51	0/2/2/2
3	SO4	B	1104	-	-	0/0/0/0	0/0/0/0
3	SO4	B	1106	-	-	0/0/0/0	0/0/0/0
3	SO4	B	1108	-	-	0/0/0/0	0/0/0/0
3	SO4	B	1109	-	-	0/0/0/0	0/0/0/0

All (6) bond length outliers are listed below:

Mol	Chain	Res	Type	Atoms	Z	Observed(Å)	Ideal(Å)
2	A	1001	SUC	O5-C5	3.29	1.52	1.44
2	B	1002	SUC	O5-C5	3.12	1.52	1.44
2	A	1001	SUC	O5-C1	2.61	1.48	1.41
2	B	1002	SUC	C4-C5	2.36	1.58	1.53
2	B	1002	SUC	O5-C1	2.31	1.47	1.41
2	A	1001	SUC	C4-C5	2.30	1.58	1.53

There are no bond angle outliers.

There are no chirality outliers.

There are no torsion outliers.

There are no ring outliers.

5.7 Other polymers ⓘ

There are no such residues in this entry.

5.8 Polymer linkage issues

There are no chain breaks in this entry.

6 Fit of model and data ⓘ

6.1 Protein, DNA and RNA chains ⓘ

EDS was not executed - this section will therefore be empty.

6.2 Non-standard residues in protein, DNA, RNA chains ⓘ

EDS was not executed - this section will therefore be empty.

6.3 Carbohydrates ⓘ

EDS was not executed - this section will therefore be empty.

6.4 Ligands ⓘ

EDS was not executed - this section will therefore be empty.

6.5 Other polymers ⓘ

EDS was not executed - this section will therefore be empty.