



Full wwPDB X-ray Structure Validation Report

Feb 28, 2014 – 12:11 PM GMT

PDB ID : 1UC4
Title : Structure of diol dehydratase complexed with (S)-1,2-propanediol
Authors : Shibata, N.; Nakanishi, Y.; Fukuoka, M.; Yamanishi, M.; Yasuoka, N.; Toraya, T.
Deposited on : 2003-04-08
Resolution : 1.80 Å(reported)

This is a full wwPDB validation report for a publicly released PDB entry.
We welcome your comments at validation@mail.wwpdb.org
A user guide is available at <http://wwpdb.org/ValidationPDFNotes.html>

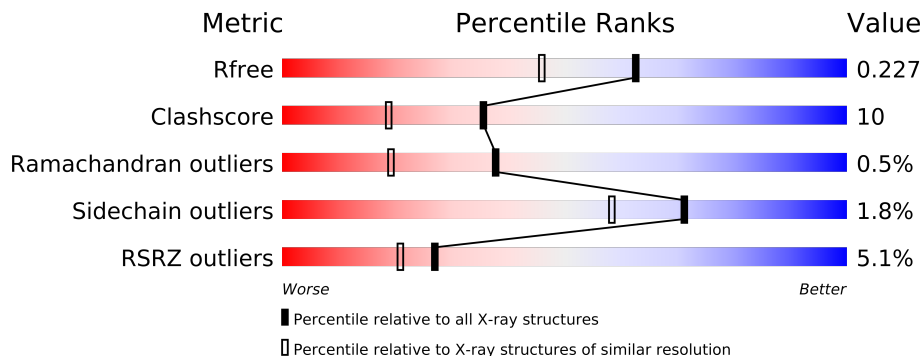
The following versions of software and data (see [references](#)) were used in the production of this report:

MolProbity	:	4.02b-467
Mogul	:	1.15 2013
Xtriage (Phenix)	:	dev-1323
EDS	:	stable22639
Percentile statistics	:	21963
Refmac	:	5.8.0049
CCP4	:	6.3.0 (Settle)
Ideal geometry (proteins)	:	Engh & Huber (2001)
Ideal geometry (DNA, RNA)	:	Parkinson et. al. (1996)
Validation Pipeline (wwPDB-VP)	:	stable22683

1 Overall quality at a glance

The reported resolution of this entry is 1.80 Å.

Percentile scores (ranging between 0-100) for global validation metrics of the entry are shown in the following graphic. The table shows the number of entries on which the scores are based.



Metric	Whole archive (#Entries)	Similar resolution (#Entries, resolution range(Å))
R_{free}	66092	3513 (1.80-1.80)
Clashscore	79885	4461 (1.80-1.80)
Ramachandran outliers	78287	4404 (1.80-1.80)
Sidechain outliers	78261	4403 (1.80-1.80)
RSRZ outliers	66119	3515 (1.80-1.80)

The table below summarises the geometric issues observed across the polymeric chains and their fit to the electron density. The red, orange, yellow and green segments on the lower bar indicate the fraction of residues that contain outliers for ≥ 3 , 2, 1 and 0 types of geometric quality criteria. The upper red bar (where present) indicates the fraction of residues that have poor fit to the electron density.

Mol	Chain	Length	Quality of chain
1	A	554	
1	L	554	
2	B	224	
2	E	224	
3	G	173	
3	M	173	

The following table lists non-polymeric compounds that are outliers for geometric or electron-density-fit criteria:

Mol	Type	Chain	Res	Geometry	Electron density
4	NH4	A	2604	-	X
4	NH4	L	3604	-	X

Continued on next page...

Continued from previous page...

Mol	Type	Chain	Res	Geometry	Electron density
4	NH4	L	3605	-	X
7	PGO	A	2602	-	X
7	PGO	L	3602	-	X

2 Entry composition

There are 8 unique types of molecules in this entry. The entry contains 14904 atoms, of which 0 are hydrogen and 0 are deuterium.

In the tables below, the ZeroOcc column contains the number of atoms modelled with zero occupancy, the AltConf column contains the number of residues with at least one atom in alternate conformation and the Trace column contains the number of residues modelled with at most 2 atoms.

- Molecule 1 is a protein called diol dehydrase alpha subunit.

Mol	Chain	Residues	Atoms					ZeroOcc	AltConf	Trace
1	A	551	Total	C	N	O	S	0	0	0
			4201	2620	727	825	29			
1	L	551	Total	C	N	O	S	0	0	0
			4201	2620	727	825	29			

- Molecule 2 is a protein called diol dehydrase beta subunit.

Mol	Chain	Residues	Atoms					ZeroOcc	AltConf	Trace
2	B	178	Total	C	N	O	S	0	0	0
			1358	859	244	253	2			
2	E	176	Total	C	N	O	S	0	0	0
			1349	854	242	251	2			

- Molecule 3 is a protein called diol dehydrase gamma subunit.

Mol	Chain	Residues	Atoms					ZeroOcc	AltConf	Trace
3	G	137	Total	C	N	O	S	0	0	0
			1093	681	195	214	3			
3	M	137	Total	C	N	O	S	0	0	0
			1093	681	195	214	3			

- Molecule 4 is AMMONIUM ION (three-letter code: NH4) (formula: H₄N).

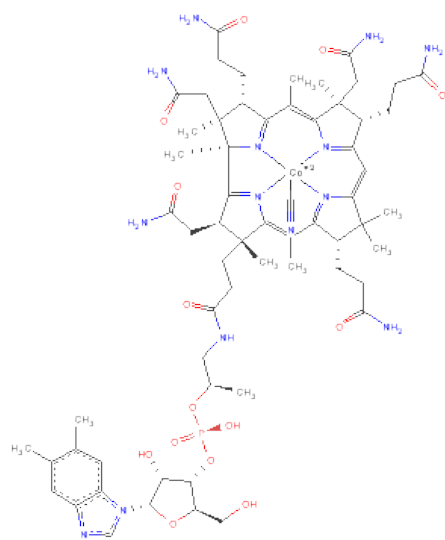


Mol	Chain	Residues	Atoms	ZeroOcc	AltConf
4	A	1	Total N 1 1	0	0
4	A	1	Total N 1 1	0	0
4	L	1	Total N 1 1	0	0
4	L	1	Total N 1 1	0	0

- Molecule 5 is POTASSIUM ION (three-letter code: K) (formula: K).

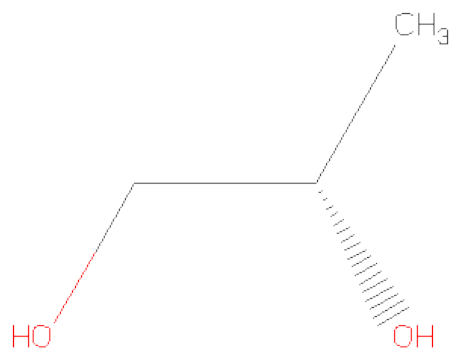
Mol	Chain	Residues	Atoms	ZeroOcc	AltConf
5	A	1	Total K 1 1	0	0
5	L	1	Total K 1 1	0	0

- Molecule 6 is CO-CYANOCOBALAMIN (three-letter code: CNC) (formula: C₆₃H₈₈CoN₁₄O₁₄P).



Mol	Chain	Residues	Atoms						ZeroOcc	AltConf
6	B	1	Total	C	Co	N	O	P	0	0
			91	62	1	13	14	1		
6	E	1	Total	C	Co	N	O	P	0	0
			91	62	1	13	14	1		

- Molecule 7 is S-1,2-PROPANEDIOL (three-letter code: PGO) (formula: C₃H₈O₂).



Mol	Chain	Residues	Atoms			ZeroOcc	AltConf
7	A	1	Total	C	O	0	0
			5	3	2		
7	L	1	Total	C	O	0	0
			5	3	2		

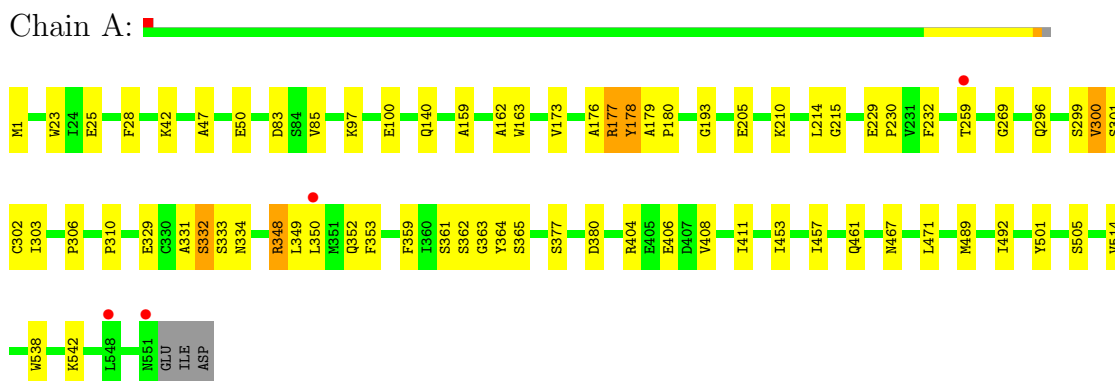
- Molecule 8 is water.

Mol	Chain	Residues	Atoms		ZeroOcc	AltConf
8	A	543	Total 543	O 543	0	0
8	B	141	Total 141	O 141	0	0
8	E	55	Total 55	O 55	0	0
8	G	185	Total 185	O 185	0	0
8	L	360	Total 360	O 360	0	0
8	M	127	Total 127	O 127	0	0

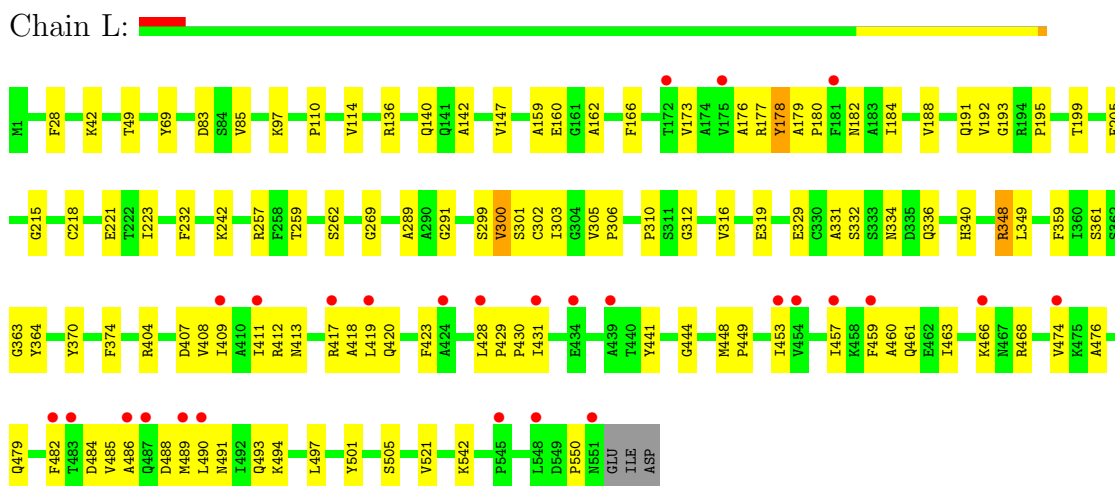
3 Residue-property plots

These plots are drawn for all protein, RNA and DNA chains in the entry. The first graphic for a chain summarises the proportions of errors displayed in the second graphic. The second graphic shows the sequence view annotated by issues in geometry and electron density. Residues are color-coded according to the number of geometric quality criteria for which they contain at least one outlier: green = 0, yellow = 1, orange = 2 and red = 3 or more. A red dot above a residue indicates a poor fit to the electron density ($RSRZ > 2$). Stretches of 2 or more consecutive residues without any outlier are shown as a green connector. Residues present in the sample, but not in the model, are shown in grey.

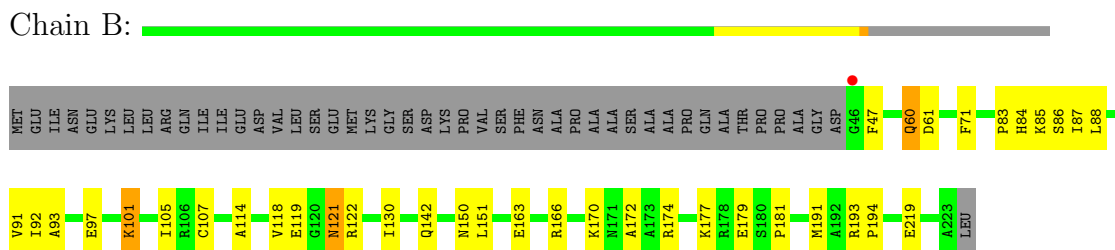
- Molecule 1: diol dehydrase alpha subunit



- Molecule 1: diol dehydrase alpha subunit

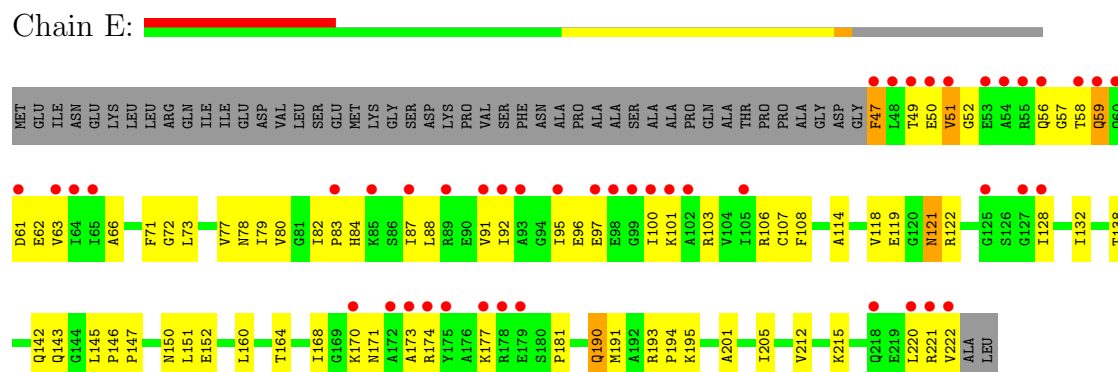


- Molecule 2: diol dehydrase beta subunit



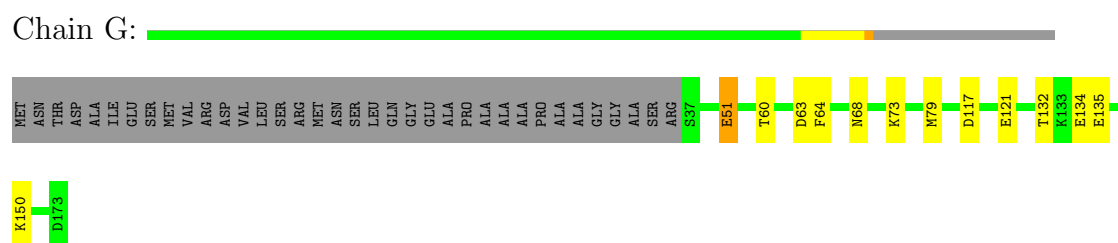
- Molecule 2: diol dehydrase beta subunit

Chain E:



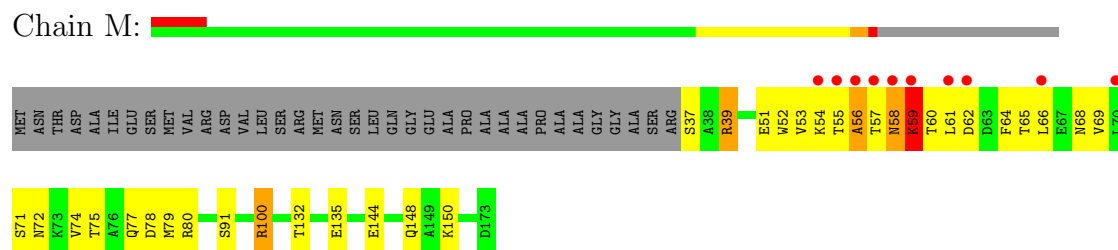
- Molecule 3: diol dehydrase gamma subunit

Chain G:



- Molecule 3: diol dehydrase gamma subunit

Chain M:



4 Data and refinement statistics

Property	Value	Source
Space group	P 21 21 21	Depositor
Cell constants a, b, c, α , β , γ	73.83Å 121.95Å 208.24Å 90.00° 90.00° 90.00°	Depositor
Resolution (Å)	36.92 – 1.80 36.91 – 1.80	Depositor EDS
% Data completeness (in resolution range)	(Not available) (36.92-1.80) 82.8 (36.91-1.80)	Depositor EDS
R_{merge}	0.06	Depositor
R_{sym}	(Not available)	Depositor
$\langle I/\sigma(I) \rangle$ ¹	1.14 (at 1.81Å)	Xtriage
Refinement program	CNS	Depositor
R, R_{free}	0.195 , 0.230 0.193 , 0.227	Depositor DCC
R_{free} test set	14380 reflections (11.08%)	DCC
Wilson B-factor (Å ²)	18.8	Xtriage
Anisotropy	0.893	Xtriage
Bulk solvent k_{sol} (e/Å ³), B_{sol} (Å ²)	0.37 , 50.7	EDS
Estimated twinning fraction	No twinning to report.	Xtriage
L-test for twinning	$\langle L \rangle = 0.49$, $\langle L^2 \rangle = 0.32$	Xtriage
Outliers	0 of 144440 reflections	Xtriage
F_o, F_c correlation	0.95	EDS
Total number of atoms	14904	wwPDB-VP
Average B, all atoms (Å ²)	30.0	wwPDB-VP

Xtriage's analysis on translational NCS is as follows: *The largest off-origin peak in the Patterson function is 3.36% of the height of the origin peak. No significant pseudotranslation is detected.*

¹Intensities estimated from amplitudes.

5 Model quality ⓘ

5.1 Standard geometry ⓘ

Bond lengths and bond angles in the following residue types are not validated in this section: NH4, K, CNC, PGO

The Z score for a bond length (or angle) is the number of standard deviations the observed value is removed from the expected value. A bond length (or angle) with $|Z| > 5$ is considered an outlier worth inspection. RMSZ is the root-mean-square of all Z scores of the bond lengths (or angles).

Mol	Chain	Bond lengths		Bond angles	
		RMSZ	$\# Z > 5$	RMSZ	$\# Z > 5$
1	A	0.33	0/4273	0.61	2/5787 (0.0%)
1	L	0.30	0/4273	0.58	2/5787 (0.0%)
2	B	0.28	0/1380	0.58	0/1868
2	E	0.26	0/1371	0.52	0/1856
3	G	0.29	0/1108	0.53	0/1497
3	M	0.28	0/1108	0.50	0/1497
All	All	0.30	0/13513	0.58	4/18292 (0.0%)

There are no bond length outliers.

All (4) bond angle outliers are listed below:

Mol	Chain	Res	Type	Atoms	Z	Observed(°)	Ideal(°)
1	A	269	GLY	N-CA-C	5.73	127.43	113.10
1	L	332	SER	N-CA-C	5.32	125.36	111.00
1	A	332	SER	N-CA-C	5.15	124.90	111.00
1	L	269	GLY	N-CA-C	5.01	125.62	113.10

There are no chirality outliers.

There are no planarity outliers.

5.2 Close contacts ⓘ

In the following table, the Non-H and H(model) columns list the number of non-hydrogen atoms and hydrogen atoms in the chain respectively. The H(added) column lists the number of hydrogens added by MolProbity. The Clashes column lists the number of clashes within the asymmetric unit, and the number in parentheses is this value normalized per 1000 atoms of the molecule in the chain. The Symm-Clashes column gives symmetry related clashes, in the same way as for the Clashes column.

Mol	Chain	Non-H	H(model)	H(added)	Clashes	Symm-Clashes
1	A	4201	0	4140	49	0
1	L	4201	0	4140	90	0
2	B	1358	0	1408	28	0
2	E	1349	0	1400	66	0
3	G	1093	0	1101	10	0
3	M	1093	0	1101	45	0
4	A	2	0	0	0	0
4	L	2	0	0	0	0
5	A	1	0	0	0	0
5	L	1	0	0	0	0
6	B	91	0	87	4	0
6	E	91	0	87	6	0
7	A	5	0	6	0	0
7	L	5	0	6	0	0
8	A	543	0	0	4	0
8	B	141	0	0	1	0
8	E	55	0	0	1	0
8	G	185	0	0	3	0
8	L	360	0	0	6	0
8	M	127	0	0	1	0
All	All	14904	0	13476	283	0

Clashscore is defined as the number of clashes calculated for the entry per 1000 atoms (including hydrogens) of the entry. The overall clashscore for this entry is 10.

All (283) close contacts within the same asymmetric unit are listed below.

Atom-1	Atom-2	Distance(Å)	Clash(Å)
1:A:193:GLY:HA2	1:A:411:ILE:HD11	1.32	1.07
2:E:174:ARG:HG2	2:E:181:PRO:HB3	1.50	0.91
2:E:190:GLN:HE21	2:E:190:GLN:H	1.21	0.88
2:B:121:ASN:C	2:B:121:ASN:HD22	1.79	0.85
2:E:190:GLN:NE2	2:E:190:GLN:H	1.79	0.79
3:M:60:THR:HG22	3:M:62:ASP:H	1.48	0.79
2:E:78:ASN:ND2	2:E:82:ILE:HB	1.99	0.78
1:L:179:ALA:HB3	1:L:180:PRO:HD3	1.71	0.71
2:E:49:THR:OG1	2:E:221:ARG:HB3	1.91	0.71
3:G:60:THR:HG22	3:G:63:ASP:CG	2.11	0.71
3:M:54:LYS:HG2	3:M:55:THR:H	1.55	0.70
1:L:497:LEU:HD22	3:M:55:THR:HG22	1.74	0.69
6:B:2601:CNC:H552	6:B:2601:CNC:H531	1.74	0.69
3:G:117:ASP:O	3:G:121:GLU:HG3	1.93	0.68
8:L:3854:HOH:O	2:E:190:GLN:HG3	1.92	0.68
1:L:159:ALA:HB1	1:L:411:ILE:HG22	1.76	0.67

Continued on next page...

Continued from previous page...

Atom-1	Atom-2	Distance(Å)	Clash(Å)
2:E:106:ARG:HB2	2:E:220:LEU:HD11	1.77	0.67
6:E:3601:CNC:H552	6:E:3601:CNC:H531	1.76	0.67
2:E:121:ASN:HD22	2:E:122:ARG:N	1.93	0.67
1:A:163:TRP:HB2	1:A:411:ILE:HD13	1.77	0.66
1:L:476:ALA:HA	1:L:479:GLN:HE21	1.60	0.66
2:E:190:GLN:HE21	2:E:190:GLN:N	1.93	0.65
2:E:78:ASN:HD21	2:E:82:ILE:HB	1.60	0.65
2:E:77:VAL:HG12	2:E:83:PRO:HA	1.79	0.65
3:M:55:THR:HG21	3:M:64:PHE:CZ	2.33	0.64
1:A:489:MET:O	1:A:492:ILE:HG22	1.97	0.64
3:M:59:LYS:HB3	3:M:59:LYS:NZ	2.13	0.64
6:B:2601:CNC:H362	6:B:2601:CNC:H351	1.78	0.63
1:L:331:ALA:HA	1:L:359:PHE:HB2	1.80	0.63
1:A:177:ARG:HB2	1:A:457:ILE:HG23	1.80	0.63
6:E:3601:CNC:H351	6:E:3601:CNC:H362	1.81	0.63
1:L:490:LEU:O	1:L:494:LYS:HG3	1.99	0.63
3:M:56:ALA:HB2	3:M:80:ARG:HB2	1.81	0.62
1:L:140:GLN:OE1	1:L:361:SER:HB2	1.99	0.62
2:B:163:GLU:HG3	8:B:2614:HOH:O	1.99	0.62
2:B:174:ARG:HD2	2:B:181:PRO:HB3	1.83	0.61
2:E:108:PHE:HB3	2:E:212:VAL:HG12	1.81	0.61
1:L:259:THR:HG22	8:L:3888:HOH:O	2.00	0.61
2:B:121:ASN:C	2:B:121:ASN:ND2	2.52	0.61
2:E:121:ASN:C	2:E:121:ASN:HD22	2.03	0.61
1:L:474:VAL:HG11	1:L:490:LEU:HD21	1.84	0.60
1:A:159:ALA:HB1	1:A:411:ILE:HG12	1.82	0.60
2:E:212:VAL:HG11	2:E:215:LYS:HD3	1.84	0.60
1:L:301:SER:HB3	6:E:3601:CNC:H532	1.83	0.60
1:L:494:LYS:HB3	1:L:494:LYS:NZ	2.16	0.60
2:E:164:THR:O	2:E:168:ILE:HG13	2.02	0.60
2:E:132:ILE:HG12	2:E:138:THR:HG23	1.83	0.59
3:M:144:GLU:HG3	3:M:150:LYS:HE3	1.84	0.59
3:M:54:LYS:CD	3:M:58:ASN:HA	2.32	0.59
1:L:420:GLN:HA	1:L:431:ILE:HD12	1.84	0.58
1:L:408:VAL:O	1:L:412:ARG:HG2	2.03	0.58
2:B:177:LYS:HE2	2:B:179:GLU:OE2	2.03	0.58
3:M:132:THR:OG1	3:M:135:GLU:HG3	2.02	0.58
1:L:177:ARG:HA	1:L:461:GLN:NE2	2.18	0.58
3:G:60:THR:HG22	3:G:63:ASP:OD2	2.04	0.58
2:E:63:VAL:HG23	2:E:100:ILE:HG21	1.85	0.58
1:A:408:VAL:O	1:A:411:ILE:HG22	2.04	0.58
1:A:163:TRP:HB2	1:A:411:ILE:CD1	2.33	0.58

Continued on next page...

Continued from previous page...

Atom-1	Atom-2	Distance(Å)	Clash(Å)
3:M:148:GLN:HA	3:M:150:LYS:NZ	2.19	0.58
2:E:122:ARG:HA	2:E:143:GLN:NE2	2.19	0.58
2:E:59:GLN:HB2	2:E:61:ASP:OD1	2.04	0.57
3:G:134:GLU:HG2	8:G:333:HOH:O	2.03	0.57
2:E:114:ALA:O	2:E:118:VAL:HG23	2.04	0.57
2:B:174:ARG:CD	2:B:181:PRO:HB3	2.35	0.57
1:L:69:TYR:HB2	1:L:289:ALA:HB1	1.86	0.57
1:A:214:LEU:HD21	1:A:467:ASN:HD22	1.70	0.57
2:E:87:ILE:O	2:E:91:VAL:HG23	2.05	0.57
1:A:461:GLN:NE2	8:A:3148:HOH:O	2.38	0.56
2:E:121:ASN:O	2:E:143:GLN:HB2	2.05	0.56
1:L:493:GLN:HG2	3:M:79:MET:CE	2.36	0.56
1:L:221:GLU:HG3	1:L:257:ARG:HD2	1.88	0.56
2:B:121:ASN:HD22	2:B:122:ARG:N	2.03	0.55
1:L:463:ILE:HG23	1:L:468:ARG:HB2	1.87	0.55
1:A:179:ALA:HB3	1:A:180:PRO:HD3	1.88	0.55
3:M:54:LYS:HD2	3:M:58:ASN:HA	1.87	0.55
1:L:199:THR:H	1:L:218:CYS:HB2	1.72	0.55
1:L:173:VAL:HG12	1:L:182:ASN:ND2	2.21	0.55
1:L:466:LYS:NZ	1:L:466:LYS:HB3	2.22	0.55
2:E:88:LEU:O	2:E:92:ILE:HG13	2.06	0.54
1:A:42:LYS:HD3	1:A:50:GLU:CD	2.28	0.54
6:B:2601:CNC:C2B	6:B:2601:CNC:H492	2.38	0.54
1:L:159:ALA:HB1	1:L:411:ILE:CG2	2.37	0.54
1:A:140:GLN:OE1	1:A:361:SER:HB2	2.08	0.54
3:G:60:THR:HG23	3:G:63:ASP:H	1.72	0.54
1:L:485:VAL:O	1:L:489:MET:HG2	2.08	0.54
1:L:453:ILE:O	1:L:457:ILE:HG13	2.08	0.53
3:M:53:VAL:HG12	3:M:54:LYS:N	2.23	0.53
2:B:193:ARG:HB3	2:B:194:PRO:HD3	1.91	0.53
2:E:79:ILE:HG23	2:E:80:VAL:HG13	1.90	0.53
1:L:188:VAL:O	1:L:192:VAL:HG23	2.10	0.52
1:A:25:GLU:CD	1:A:25:GLU:H	2.12	0.52
1:L:334:ASN:ND2	1:L:348:ARG:HD3	2.24	0.52
2:E:193:ARG:HB3	2:E:194:PRO:HD3	1.90	0.52
1:A:1:MET:HG2	1:L:441:TYR:CE2	2.44	0.52
1:A:408:VAL:HA	1:A:411:ILE:HG22	1.91	0.52
2:E:170:LYS:O	2:E:174:ARG:HB2	2.10	0.52
3:M:100:ARG:HG3	3:M:100:ARG:HH11	1.74	0.52
1:L:370:TYR:OH	1:L:444:GLY:HA3	2.09	0.52
3:M:100:ARG:NH1	3:M:100:ARG:HG3	2.25	0.52
1:L:484:ASP:OD1	1:L:485:VAL:HG23	2.10	0.52

Continued on next page...

Continued from previous page...

Atom-1	Atom-2	Distance(Å)	Clash(Å)
1:L:205:GLU:HG2	8:E:3633:HOH:O	2.09	0.52
3:G:64:PHE:CE1	3:G:79:MET:HG2	2.44	0.51
2:E:114:ALA:HB2	6:E:3601:CNC:HM62	1.91	0.51
1:L:160:GLU:HG3	1:L:408:VAL:HG13	1.93	0.51
2:E:121:ASN:ND2	2:E:122:ARG:HG3	2.26	0.51
1:A:299:SER:OG	1:A:303:ILE:HA	2.10	0.51
1:A:97:LYS:HB2	1:A:100:GLU:HG3	1.93	0.51
2:B:105:ILE:HG22	2:B:219:GLU:HA	1.92	0.51
1:A:329:GLU:OE2	1:A:505:SER:HA	2.11	0.51
2:B:97:GLU:OE1	2:B:170:LYS:HE2	2.11	0.51
1:L:110:PRO:O	1:L:114:VAL:HG23	2.11	0.51
1:L:69:TYR:HB3	3:M:100:ARG:NH1	2.26	0.50
1:L:413:ASN:O	1:L:417:ARG:HG2	2.11	0.50
2:E:121:ASN:C	2:E:121:ASN:ND2	2.65	0.50
1:L:493:GLN:O	1:L:497:LEU:HG	2.10	0.50
1:L:180:PRO:HG2	1:L:460:ALA:O	2.12	0.50
2:B:107:CYS:HB3	2:B:119:GLU:OE1	2.11	0.50
1:L:418:ALA:HA	1:L:482:PHE:CE2	2.46	0.50
1:A:205:GLU:HG2	8:A:2621:HOH:O	2.12	0.50
1:L:484:ASP:OD1	1:L:485:VAL:N	2.46	0.49
1:A:215:GLY:HA2	8:A:2817:HOH:O	2.12	0.49
2:B:191:MET:C	2:B:194:PRO:HD2	2.32	0.49
1:L:223:ILE:HG22	1:L:242:LYS:HD2	1.94	0.49
1:L:409:ILE:HD13	1:L:441:TYR:HE1	1.78	0.49
2:E:57:GLY:O	2:E:58:THR:HB	2.12	0.49
1:A:310:PRO:HG2	1:L:542:LYS:HD2	1.94	0.49
2:B:142:GLN:NE2	2:B:151:LEU:HD21	2.28	0.49
3:M:57:THR:HG23	3:M:77:GLN:O	2.13	0.48
3:M:148:GLN:HA	3:M:150:LYS:HZ3	1.77	0.48
2:E:128:ILE:N	2:E:128:ILE:HD12	2.28	0.48
1:L:305:VAL:HB	1:L:306:PRO:CD	2.43	0.48
1:L:429:PRO:HD3	1:L:459:PHE:CD2	2.47	0.48
3:M:144:GLU:HG3	3:M:150:LYS:CE	2.42	0.48
2:B:83:PRO:HG2	2:B:86:SER:OG	2.14	0.48
3:M:55:THR:HB	3:M:78:ASP:O	2.13	0.48
1:L:428:LEU:HD23	1:L:459:PHE:HD2	1.78	0.48
2:E:100:ILE:HG13	2:E:173:ALA:HB1	1.94	0.48
3:M:56:ALA:O	3:M:57:THR:HG23	2.13	0.48
1:A:259:THR:CG2	1:A:296:GLN:HE21	2.26	0.48
1:A:350:LEU:HA	1:A:353:PHE:HB3	1.94	0.48
3:M:39:ARG:HG2	3:M:39:ARG:HH11	1.78	0.48
3:G:51:GLU:CD	3:G:51:GLU:H	2.17	0.48

Continued on next page...

Continued from previous page...

Atom-1	Atom-2	Distance(Å)	Clash(Å)
2:E:47:PHE:O	2:E:222:VAL:HA	2.14	0.47
1:L:486:ALA:O	1:L:489:MET:HB2	2.13	0.47
2:B:93:ALA:HB3	2:B:166:ARG:HH12	1.78	0.47
3:M:57:THR:HG1	3:M:59:LYS:HE2	1.80	0.47
2:B:93:ALA:CB	2:B:166:ARG:HH12	2.27	0.47
2:E:142:GLN:NE2	2:E:151:LEU:HD21	2.28	0.47
2:E:108:PHE:HB3	2:E:212:VAL:CG1	2.44	0.47
2:E:107:CYS:HB3	2:E:119:GLU:OE1	2.14	0.47
1:L:453:ILE:HG22	1:L:457:ILE:CD1	2.45	0.47
1:A:538:TRP:O	1:A:542:LYS:HG3	2.14	0.47
2:E:59:GLN:N	2:E:59:GLN:NE2	2.63	0.47
1:L:486:ALA:HB1	3:M:66:LEU:HD21	1.97	0.47
2:E:57:GLY:O	2:E:58:THR:CB	2.62	0.47
3:G:132:THR:OG1	3:G:135:GLU:HG3	2.14	0.47
1:L:419:LEU:HD11	1:L:423:PHE:HE1	1.80	0.47
1:A:210:LYS:O	1:A:210:LYS:HD3	2.14	0.47
1:A:300:VAL:HG12	1:A:301:SER:N	2.30	0.47
1:L:42:LYS:HG2	1:L:49:THR:OG1	2.16	0.46
3:M:59:LYS:HB3	3:M:59:LYS:HZ3	1.80	0.46
1:L:162:ALA:HB3	1:L:193:GLY:HA3	1.97	0.46
1:A:514:VAL:HG12	8:G:203:HOH:O	2.14	0.46
3:M:60:THR:HG22	3:M:61:LEU:N	2.29	0.46
2:B:83:PRO:HG2	2:B:86:SER:CB	2.45	0.46
2:E:92:ILE:O	2:E:96:GLU:HG3	2.16	0.46
1:L:83:ASP:OD2	1:L:85:VAL:HB	2.15	0.46
1:L:291:GLY:HA2	3:M:100:ARG:HB3	1.98	0.46
2:E:191:MET:C	2:E:194:PRO:HD2	2.36	0.46
2:B:130:ILE:HD11	2:B:172:ALA:CB	2.46	0.46
2:E:118:VAL:O	2:E:121:ASN:ND2	2.49	0.46
1:A:42:LYS:HB2	1:A:50:GLU:HB3	1.97	0.46
1:L:334:ASN:ND2	1:L:349:LEU:HA	2.31	0.46
2:B:88:LEU:O	2:B:92:ILE:HG13	2.15	0.46
6:B:2601:CNC:H251	6:B:2601:CNC:H291	1.81	0.45
6:E:3601:CNC:O6R	6:E:3601:CNC:H492	2.16	0.45
1:A:404:ARG:HH21	1:A:406:GLU:CD	2.19	0.45
1:A:334:ASN:ND2	1:A:348:ARG:HD3	2.31	0.45
3:M:54:LYS:HG2	3:M:55:THR:N	2.29	0.45
1:A:334:ASN:ND2	1:A:349:LEU:HA	2.31	0.45
1:L:493:GLN:HG2	3:M:79:MET:HE1	1.99	0.45
1:A:23:TRP:HB2	1:L:550:PRO:HG3	1.98	0.45
2:E:201:ALA:O	2:E:205:ILE:HG13	2.17	0.45
1:L:173:VAL:HG21	1:L:176:ALA:HA	1.99	0.45

Continued on next page...

Continued from previous page...

Atom-1	Atom-2	Distance(Å)	Clash(Å)
1:L:184:ILE:O	1:L:188:VAL:HG23	2.17	0.45
2:E:150:ASN:HD22	2:E:152:GLU:C	2.20	0.45
1:A:365:SER:HB2	1:A:377:SER:HB3	1.98	0.45
3:M:56:ALA:CB	3:M:80:ARG:HB2	2.46	0.45
1:L:147:VAL:HG22	1:L:147:VAL:O	2.17	0.45
2:B:60:GLN:HG2	2:B:60:GLN:O	2.17	0.45
1:L:262:SER:HA	8:L:3677:HOH:O	2.16	0.44
2:E:100:ILE:CG1	2:E:173:ALA:HB1	2.47	0.44
1:L:299:SER:OG	1:L:303:ILE:HA	2.17	0.44
1:A:331:ALA:HA	1:A:359:PHE:HB2	1.99	0.44
3:M:68:ASN:HB3	3:M:74:VAL:HG23	1.98	0.44
2:E:72:GLY:C	2:E:73:LEU:HD12	2.38	0.44
2:E:97:GLU:OE1	2:E:170:LYS:HE2	2.17	0.44
3:M:57:THR:CG2	3:M:77:GLN:HG2	2.47	0.44
1:L:306:PRO:O	1:L:312:GLY:HA3	2.17	0.44
1:A:302:CYS:O	1:A:306:PRO:HD2	2.17	0.44
3:M:51:GLU:HG2	3:M:52:TRP:HD1	1.83	0.44
2:E:96:GLU:HA	2:E:100:ILE:O	2.17	0.44
1:L:428:LEU:O	1:L:429:PRO:C	2.55	0.44
2:E:212:VAL:HG11	2:E:215:LYS:CD	2.48	0.44
1:L:215:GLY:HA2	8:L:3817:HOH:O	2.17	0.44
1:L:316:VAL:O	1:L:319:GLU:HG2	2.16	0.44
2:B:71:PHE:CE1	2:B:84:HIS:HB3	2.53	0.44
2:B:174:ARG:HD2	2:B:181:PRO:CB	2.46	0.44
3:M:55:THR:OG1	3:M:59:LYS:HD3	2.18	0.44
2:B:83:PRO:HG2	2:B:86:SER:HB2	1.99	0.44
1:L:336:GLN:HE22	1:L:374:PHE:HB3	1.82	0.44
1:A:178:TYR:CE2	1:A:453:ILE:HG23	2.53	0.43
3:M:55:THR:HG21	3:M:64:PHE:CE2	2.53	0.43
1:L:474:VAL:CG1	1:L:490:LEU:HD21	2.47	0.43
3:G:150:LYS:HE2	8:G:314:HOH:O	2.17	0.43
1:L:486:ALA:HB3	3:M:66:LEU:HD11	2.00	0.43
2:E:142:GLN:HG2	2:E:145:LEU:HD22	2.00	0.43
1:L:302:CYS:O	1:L:306:PRO:HD2	2.18	0.43
2:E:91:VAL:O	2:E:95:ILE:HG13	2.18	0.43
1:L:300:VAL:HG12	1:L:301:SER:N	2.34	0.43
2:E:160:LEU:HD22	2:E:164:THR:HG21	2.00	0.43
2:E:56:GLN:HG3	2:E:57:GLY:N	2.32	0.43
3:M:75:THR:HB	8:M:254:HOH:O	2.17	0.43
3:G:68:ASN:OD1	3:G:73:LYS:HD3	2.18	0.43
1:L:173:VAL:HG11	1:L:179:ALA:HA	1.99	0.43
2:E:100:ILE:HG22	2:E:101:LYS:N	2.34	0.42

Continued on next page...

Continued from previous page...

Atom-1	Atom-2	Distance(Å)	Clash(Å)
1:L:142:ALA:HB2	1:L:166:PHE:CE1	2.54	0.42
2:B:122:ARG:HG2	2:B:122:ARG:HH11	1.84	0.42
2:E:71:PHE:CE1	2:E:84:HIS:HB3	2.54	0.42
2:E:106:ARG:HD2	2:E:108:PHE:CZ	2.55	0.42
3:M:55:THR:C	3:M:57:THR:H	2.23	0.42
1:L:136:ARG:HD2	1:L:521:VAL:O	2.19	0.42
1:A:178:TYR:HE2	1:A:453:ILE:HG23	1.84	0.42
2:E:212:VAL:HG13	2:E:215:LYS:HB3	2.00	0.42
1:A:83:ASP:OD2	1:A:85:VAL:HB	2.19	0.42
2:E:174:ARG:HG2	2:E:174:ARG:HH11	1.85	0.42
1:L:453:ILE:HG22	1:L:457:ILE:HD11	2.02	0.42
1:A:471:LEU:HA	1:A:471:LEU:HD23	1.91	0.42
1:A:229:GLU:N	1:A:230:PRO:HD2	2.34	0.42
1:A:365:SER:HB3	1:A:380:ASP:HA	2.02	0.42
2:B:47:PHE:CE2	2:B:85:LYS:HA	2.55	0.42
1:A:47:ALA:HB3	8:A:2974:HOH:O	2.19	0.42
1:A:162:ALA:HB3	1:A:193:GLY:HA3	2.01	0.41
1:L:173:VAL:HG12	1:L:182:ASN:CG	2.40	0.41
2:E:142:GLN:HG3	2:E:142:GLN:O	2.18	0.41
1:L:404:ARG:CB	1:L:404:ARG:HH11	2.33	0.41
2:E:77:VAL:HG12	2:E:83:PRO:CA	2.50	0.41
1:L:97:LYS:HG3	8:L:3886:HOH:O	2.20	0.41
2:E:170:LYS:HG3	2:E:171:ASN:N	2.36	0.41
1:A:334:ASN:HD21	1:A:349:LEU:HA	1.85	0.41
3:M:65:THR:O	3:M:69:VAL:HG23	2.20	0.41
1:L:407:ASP:O	1:L:411:ILE:HG12	2.19	0.41
3:M:39:ARG:NH1	3:M:39:ARG:HG2	2.35	0.41
1:L:493:GLN:HG2	3:M:79:MET:HE2	2.03	0.41
1:L:334:ASN:HD21	1:L:349:LEU:HA	1.85	0.41
2:E:66:ALA:HB1	2:E:107:CYS:SG	2.61	0.41
3:M:37:SER:HB2	3:M:91:SER:OG	2.19	0.41
1:A:332:SER:HB2	1:A:352:GLN:HG2	2.02	0.41
1:A:173:VAL:HG21	1:A:176:ALA:HA	2.02	0.41
2:B:87:ILE:O	2:B:91:VAL:HG23	2.20	0.41
1:L:191:GLN:OE1	1:L:195:PRO:HA	2.20	0.41
6:E:3601:CNC:H531	6:E:3601:CNC:C55	2.48	0.41
3:M:100:ARG:HA	3:M:100:ARG:NE	2.35	0.41
1:L:429:PRO:HA	1:L:430:PRO:HD2	1.86	0.41
8:L:3782:HOH:O	3:M:100:ARG:HD3	2.20	0.41
1:L:488:ASP:HA	1:L:491:ASN:HD22	1.85	0.41
1:L:177:ARG:CB	1:L:457:ILE:HG23	2.50	0.41
1:A:300:VAL:HG12	1:A:301:SER:H	1.85	0.41

Continued on next page...

Continued from previous page...

Atom-1	Atom-2	Distance(Å)	Clash(Å)
2:E:62:GLU:OE2	2:E:103:ARG:NH2	2.54	0.41
1:A:542:LYS:HD2	1:L:310:PRO:HG2	2.03	0.41
1:L:142:ALA:HB2	1:L:166:PHE:CD1	2.56	0.41
2:E:146:PRO:HA	2:E:147:PRO:HD3	1.97	0.41
1:L:448:MET:HA	1:L:449:PRO:HD3	1.92	0.41
1:L:476:ALA:HA	1:L:479:GLN:NE2	2.32	0.40
1:A:333:SER:HA	1:A:362:SER:OG	2.21	0.40
3:M:71:SER:O	3:M:72:ASN:HB2	2.21	0.40
2:B:114:ALA:O	2:B:118:VAL:HG23	2.21	0.40
1:L:329:GLU:OE2	1:L:505:SER:HA	2.22	0.40
2:E:100:ILE:HD11	2:E:177:LYS:CG	2.51	0.40
2:B:61:ASP:CG	2:B:101:LYS:HE2	2.42	0.40
1:L:178:TYR:HE2	1:L:453:ILE:HG23	1.87	0.40
1:L:340:HIS:CD2	2:E:195:LYS:HZ2	2.38	0.40
2:E:51:VAL:HG12	2:E:52:GLY:N	2.35	0.40

There are no symmetry-related clashes.

5.3 Torsion angles

5.3.1 Protein backbone ⓘ

In the following table, the Percentiles column shows the percent Ramachandran outliers of the chain as a percentile score with respect to all X-ray entries followed by that with respect to entries of similar resolution. The Analysed column shows the number of residues for which the backbone conformation was analysed, and the total number of residues.

Mol	Chain	Analysed	Favoured	Allowed	Outliers	Percentiles	
1	A	549/554 (99%)	523 (95%)	24 (4%)	2 (0%)	43	25
1	L	549/554 (99%)	522 (95%)	25 (5%)	2 (0%)	43	25
2	B	176/224 (79%)	171 (97%)	5 (3%)	0	100	100
2	E	174/224 (78%)	161 (92%)	11 (6%)	2 (1%)	21	5
3	G	135/173 (78%)	133 (98%)	2 (2%)	0	100	100
3	M	135/173 (78%)	125 (93%)	7 (5%)	3 (2%)	10	1
All	All	1718/1902 (90%)	1635 (95%)	74 (4%)	9 (0%)	38	19

All (9) Ramachandran outliers are listed below:

Mol	Chain	Res	Type
2	E	51	VAL
3	M	58	ASN
3	M	59	LYS
1	A	363	GLY
1	L	363	GLY
2	E	50	GLU
3	M	56	ALA
1	A	300	VAL
1	L	300	VAL

5.3.2 Protein sidechains ⓘ

In the following table, the Percentiles column shows the percent sidechain outliers of the chain as a percentile score with respect to all X-ray entries followed by that with respect to entries of similar resolution. The Analysed column shows the number of residues for which the sidechain conformation was analysed, and the total number of residues.

Mol	Chain	Analysed	Rotameric	Outliers	Percentiles	
1	A	450/453 (99%)	443 (98%)	7 (2%)	75	63
1	L	450/453 (99%)	444 (99%)	6 (1%)	80	71
2	B	146/183 (80%)	142 (97%)	4 (3%)	57	39
2	E	146/183 (80%)	142 (97%)	4 (3%)	57	39
3	G	116/141 (82%)	115 (99%)	1 (1%)	87	83
3	M	116/141 (82%)	113 (97%)	3 (3%)	59	41
All	All	1424/1554 (92%)	1399 (98%)	25 (2%)	71	58

All (25) residues with a non-rotameric sidechain are listed below:

Mol	Chain	Res	Type
1	A	28	PHE
1	A	177	ARG
1	A	178	TYR
1	A	232	PHE
1	A	348	ARG
1	A	364	TYR
1	A	501	TYR
2	B	60	GLN
2	B	101	LYS
2	B	121	ASN
2	B	150	ASN

Continued on next page...

Continued from previous page...

Mol	Chain	Res	Type
3	G	51	GLU
1	L	28	PHE
1	L	178	TYR
1	L	232	PHE
1	L	348	ARG
1	L	364	TYR
1	L	501	TYR
2	E	47	PHE
2	E	59	GLN
2	E	121	ASN
2	E	190	GLN
3	M	39	ARG
3	M	59	LYS
3	M	100	ARG

Some sidechains can be flipped to improve hydrogen bonding and reduce clashes. All (30) such sidechains are listed below:

Mol	Chain	Res	Type
1	A	74	ASN
1	A	334	ASN
1	A	352	GLN
1	A	465	ASN
1	A	467	ASN
1	A	543	ASN
2	B	75	GLN
2	B	121	ASN
2	B	142	GLN
2	B	204	HIS
3	G	58	ASN
1	L	45	ASN
1	L	74	ASN
1	L	334	ASN
1	L	352	GLN
1	L	461	GLN
1	L	465	ASN
1	L	467	ASN
1	L	479	GLN
1	L	543	ASN
2	E	56	GLN
2	E	59	GLN
2	E	75	GLN
2	E	121	ASN

Continued on next page...

Continued from previous page...

Mol	Chain	Res	Type
2	E	142	GLN
2	E	143	GLN
2	E	150	ASN
2	E	182	GLN
2	E	190	GLN
3	M	77	GLN

5.3.3 RNA ⓘ

There are no RNA chains in this entry.

5.4 Non-standard residues in protein, DNA, RNA chains ⓘ

There are no non-standard protein/DNA/RNA residues in this entry.

5.5 Carbohydrates ⓘ

There are no carbohydrates in this entry.

5.6 Ligand geometry ⓘ

Of 10 ligands modelled in this entry, 4 are modelled with single atom and 2 are monoatomic - leaving 4 for Mogul analysis.

In the following table, the Counts columns list the number of bonds (or angles) for which Mogul statistics could be retrieved, the number of bonds (or angles) that are observed in the model and the number of bonds (or angles) that are defined in the chemical component dictionary. The Link column lists molecule types, if any, to which the group is linked. The Z score for a bond length (or angle) is the number of standard deviations the observed value is removed from the expected value. A bond length (or angle) with $|Z| > 2$ is considered an outlier worth inspection. RMSZ is the root-mean-square of all Z scores of the bond lengths (or angles).

Mol	Type	Chain	Res	Link	Bond lengths			Bond angles		
					Counts	RMSZ	$\# Z > 2$	Counts	RMSZ	$\# Z > 2$
7	PGO	A	2602	5	4,4,4	0.44	0	4,4,4	0.30	0
6	CNC	B	2601	-	101,101,103	4.56	15 (14%)	149,166,171	1.26	12 (8%)
6	CNC	E	3601	-	101,101,103	5.13	16 (15%)	149,166,171	1.28	13 (8%)
7	PGO	L	3602	5	4,4,4	0.50	0	4,4,4	0.32	0

In the following table, the Chirals column lists the number of chiral outliers, the number of chiral

centers analysed, the number of these observed in the model and the number defined in the chemical component dictionary. Similar counts are reported in the Torsion and Rings columns. '-' means no outliers of that kind were identified.

Mol	Type	Chain	Res	Link	Chirals	Torsions	Rings
7	PGO	A	2602	5	-	0/2/2/2	0/0/0/0
6	CNC	B	2601	-	-	0/56/223/235	0/1/11/11
6	CNC	E	3601	-	-	0/56/223/235	0/1/11/11
7	PGO	L	3602	5	-	0/2/2/2	0/0/0/0

All (31) bond length outliers are listed below:

Mol	Chain	Res	Type	Atoms	Z	Observed(Å)	Ideal(Å)
6	E	3601	CNC	CO-N21	48.77	1.89	1.79
6	B	2601	CNC	CO-N21	42.66	1.88	1.79
6	E	3601	CNC	C19-N24	7.46	1.52	1.33
6	B	2601	CNC	C19-N24	7.40	1.52	1.33
6	B	2601	CNC	C1-C19	6.83	1.59	1.51
6	E	3601	CNC	C1-C19	6.64	1.58	1.51
6	E	3601	CNC	C5M-C5B	-5.16	1.40	1.51
6	B	2601	CNC	C5M-C5B	-5.00	1.40	1.51
6	B	2601	CNC	C30-C3	3.78	1.60	1.53
6	B	2601	CNC	C48-C13	3.73	1.59	1.53
6	E	3601	CNC	C30-C3	3.57	1.59	1.53
6	B	2601	CNC	C41-C8	3.28	1.59	1.53
6	E	3601	CNC	C13-C14	3.26	1.59	1.52
6	E	3601	CNC	C48-C13	3.23	1.59	1.53
6	E	3601	CNC	C11-C10	-3.19	1.35	1.41
6	B	2601	CNC	C11-C10	-3.12	1.35	1.41
6	E	3601	CNC	C16-C15	2.95	1.49	1.41
6	E	3601	CNC	C41-C8	2.91	1.58	1.53
6	E	3601	CNC	C7-C6	2.91	1.59	1.52
6	B	2601	CNC	O58-C57	2.81	1.29	1.23
6	B	2601	CNC	C7-C6	2.75	1.59	1.52
6	E	3601	CNC	O58-C57	2.68	1.29	1.23
6	B	2601	CNC	C13-C14	2.68	1.58	1.52
6	B	2601	CNC	C16-C15	2.60	1.48	1.41
6	B	2601	CNC	C48-C49	2.60	1.61	1.52
6	E	3601	CNC	C17-C16	2.55	1.58	1.52
6	E	3601	CNC	C48-C49	2.30	1.60	1.52
6	B	2601	CNC	C2R-C1R	2.23	1.56	1.53
6	E	3601	CNC	C2R-C1R	2.22	1.56	1.53
6	B	2601	CNC	C17-C16	2.09	1.57	1.52
6	E	3601	CNC	C1-N21	2.03	1.53	1.50

All (25) bond angle outliers are listed below:

Mol	Chain	Res	Type	Atoms	Z	Observed(°)	Ideal(°)
6	E	3601	CNC	C2-C1-N21	6.28	104.25	101.05
6	B	2601	CNC	C19-C1-N21	-6.11	102.16	105.78
6	B	2601	CNC	C2-C1-N21	4.48	103.33	101.05
6	E	3601	CNC	C19-C1-N21	-4.17	103.31	105.78
6	B	2601	CNC	C55-C17-C16	3.84	122.06	110.84
6	E	3601	CNC	C55-C17-C16	3.61	121.41	110.84
6	E	3601	CNC	C26-C2-C1	3.46	115.31	110.04
6	B	2601	CNC	C53-C15-C16	3.35	123.49	118.64
6	B	2601	CNC	C35-C5-C6	3.03	123.03	118.64
6	E	3601	CNC	C56-C55-C17	2.89	121.59	115.47
6	E	3601	CNC	C53-C15-C16	2.84	122.75	118.64
6	B	2601	CNC	C56-C55-C17	2.68	121.16	115.47
6	E	3601	CNC	C35-C5-C6	2.67	122.50	118.64
6	E	3601	CNC	C7-C37-C38	2.64	122.72	114.52
6	B	2601	CNC	C1-C19-N24	-2.53	107.25	113.79
6	B	2601	CNC	C7-C37-C38	2.49	122.26	114.52
6	B	2601	CNC	C35-C5-C4	-2.42	115.13	118.64
6	B	2601	CNC	C4B-C9B-C8B	-2.42	118.63	121.10
6	E	3601	CNC	C4B-C9B-C8B	-2.38	118.66	121.10
6	E	3601	CNC	C35-C5-C4	-2.34	115.25	118.64
6	E	3601	CNC	C1-C19-N24	-2.17	108.18	113.79
6	E	3601	CNC	O58-C57-C56	-2.11	117.72	121.92
6	B	2601	CNC	O58-C57-C56	-2.10	117.75	121.92
6	E	3601	CNC	C25-C2-C3	-2.07	111.79	115.57
6	B	2601	CNC	C41-C8-C9	-2.07	104.98	111.43

There are no chirality outliers.

There are no torsion outliers.

There are no ring outliers.

5.7 Other polymers ⓘ

There are no such residues in this entry.

5.8 Polymer linkage issues

There are no chain breaks in this entry.

6 Fit of model and data ⓘ

6.1 Protein, DNA and RNA chains ⓘ

In the following table, the column labelled ‘#RSRZ > 2’ contains the number (and percentage) of RSRZ outliers, followed by percent RSRZ outliers for the chain as percentile scores relative to all X-ray entries and entries of similar resolution. The OWAB column contains the minimum, median, 95th percentile and maximum values of the occupancy-weighted average B-factor per residue. The column labelled ‘Q < 0.9’ lists the number of (and percentage) of residues with an average occupancy less than 0.9.

Mol	Chain	Analysed	<RSRZ>	#RSRZ>2	OWAB(Å ²)	Q<0.9
1	A	551/554 (99%)	-0.17	4 (0%) 84 83	13, 18, 30, 66	2 (0%)
1	L	551/554 (99%)	0.31	27 (4%) 28 22	14, 23, 65, 80	1 (0%)
2	B	178/224 (79%)	-0.08	1 (0%) 86 85	17, 29, 48, 54	0
2	E	176/224 (78%)	1.35	46 (26%) 1 1	22, 50, 98, 111	0
3	G	137/173 (79%)	-0.21	0 100 100	15, 23, 39, 47	3 (2%)
3	M	137/173 (79%)	0.40	10 (7%) 15 10	22, 29, 69, 82	1 (0%)
All	All	1730/1902 (90%)	0.19	88 (5%) 27 21	13, 24, 65, 111	7 (0%)

All (88) RSRZ outliers are listed below:

Mol	Chain	Res	Type	RSRZ
2	E	47	PHE	8.7
2	E	51	VAL	7.9
3	M	66	LEU	6.4
2	E	54	ALA	5.7
2	E	99	GLY	5.6
3	M	57	THR	5.2
2	E	60	GLN	5.1
1	L	482	PHE	5.0
3	M	55	THR	4.9
1	L	454	VAL	4.6
2	E	95	ILE	4.5
2	E	222	VAL	4.4
2	E	63	VAL	4.0
2	E	102	ALA	4.0
2	E	100	ILE	4.0
1	L	459	PHE	3.9
3	M	56	ALA	3.8
1	L	453	ILE	3.8
3	M	62	ASP	3.8

Continued on next page...

Continued from previous page...

Mol	Chain	Res	Type	RSRZ
2	E	93	ALA	3.7
2	E	50	GLU	3.7
1	L	490	LEU	3.6
1	L	439	ALA	3.6
1	L	428	LEU	3.5
2	E	61	ASP	3.5
1	L	483	THR	3.5
1	A	259	THR	3.5
2	E	48	LEU	3.5
1	L	431	ILE	3.4
2	E	58	THR	3.4
3	M	58	ASN	3.3
2	E	105	ILE	3.3
2	E	173	ALA	3.2
1	L	181	PHE	3.2
2	E	49	THR	3.2
2	E	97	GLU	3.2
1	L	551	ASN	3.1
2	E	91	VAL	3.1
2	E	178	ARG	3.1
3	M	59	LYS	3.1
1	A	551	ASN	3.0
2	E	220	LEU	3.0
1	L	175	VAL	3.0
2	E	179	GLU	3.0
2	E	55	ARG	3.0
2	E	98	GLU	2.9
1	L	411	ILE	2.9
2	E	221	ARG	2.9
2	E	170	LYS	2.8
2	E	59	GLN	2.8
1	L	486	ALA	2.8
3	M	70	LEU	2.8
2	E	174	ARG	2.7
2	E	172	ALA	2.7
2	E	128	ILE	2.6
2	E	56	GLN	2.6
1	L	548	LEU	2.6
2	E	218	GLN	2.6
1	L	434	GLU	2.5
1	L	545	PRO	2.5
2	E	64	ILE	2.4

Continued on next page...

Continued from previous page...

Mol	Chain	Res	Type	RSRZ
1	L	474	VAL	2.4
2	E	85	LYS	2.4
2	E	101	LYS	2.4
2	E	177	LYS	2.3
2	B	46	GLY	2.3
1	L	417	ARG	2.3
1	L	409	ILE	2.3
2	E	53	GLU	2.3
2	E	175	TYR	2.3
2	E	87	ILE	2.3
1	L	419	LEU	2.2
1	A	350	LEU	2.2
2	E	65	ILE	2.2
1	L	466	LYS	2.2
1	L	457	ILE	2.2
2	E	125	GLY	2.2
1	L	424	ALA	2.2
1	A	548	LEU	2.2
2	E	89	ARG	2.2
1	L	487	GLN	2.2
3	M	61	LEU	2.1
1	L	172	THR	2.1
1	L	489	MET	2.1
3	M	54	LYS	2.1
2	E	83	PRO	2.0
2	E	92	ILE	2.0
2	E	127	GLY	2.0

6.2 Non-standard residues in protein, DNA, RNA chains ⓘ

There are no non-standard protein/DNA/RNA residues in this entry.

6.3 Carbohydrates ⓘ

There are no carbohydrates in this entry.

6.4 Ligands ⓘ

In the following table, the Atoms column lists the number of modelled atoms in the group and the number defined in the chemical component dictionary. LLDF column lists the quality of electron density of the group with respect to its neighbouring residues in protein, DNA or RNA chains.

The B-factors column lists the minimum, median, 95th percentile and maximum values of B factors of atoms in the group. The column labelled 'Q< 0.9' lists the number of atoms with occupancy less than 0.9.

Mol	Type	Chain	Res	Atoms	RSR	LLDF	B-factors(Å ²)	Q<0.9
4	NH4	L	3604	1/1	0.24	4.68	16,16,16,16	0
7	PGO	A	2602	5/5	0.25	4.63	14,15,16,16	0
4	NH4	A	2604	1/1	0.25	4.24	14,14,14,14	0
7	PGO	L	3602	5/5	0.21	2.83	22,23,24,24	0
4	NH4	L	3605	1/1	0.21	2.76	30,30,30,30	0
4	NH4	A	2605	1/1	0.20	1.87	19,19,19,19	0
6	CNC	B	2601	91/93	0.13	0.50	14,17,26,32	0
6	CNC	E	3601	91/93	0.14	0.20	22,27,35,40	0
5	K	A	2603	1/1	0.13	-0.92	15,15,15,15	0
5	K	L	3603	1/1	0.10	-3.55	20,20,20,20	0

6.5 Other polymers ⓘ

There are no such residues in this entry.