



Full wwPDB X-ray Structure Validation Report

Feb 28, 2014 – 12:50 PM GMT

PDB ID : 3UR0
Title : Crystal structures of murine norovirus RNA-dependent RNA polymerase in complex with Suramin
Authors : Milani, M.; Mastrangelo, E.; Bolognesi, M.
Deposited on : 2011-11-21
Resolution : 2.45 Å(reported)

This is a full wwPDB validation report for a publicly released PDB entry.
We welcome your comments at validation@mail.wwpdb.org
A user guide is available at <http://wwpdb.org/ValidationPDFNotes.html>

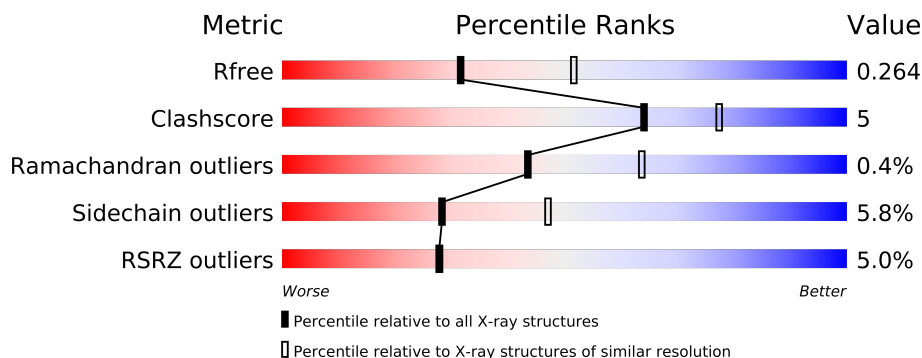
The following versions of software and data (see [references](#)) were used in the production of this report:

MolProbity : 4.02b-467
Mogul : 1.15 2013
Xtriage (Phenix) : dev-1323
EDS : stable22639
Percentile statistics : 21963
Refmac : 5.8.0049
CCP4 : 6.3.0 (Settle)
Ideal geometry (proteins) : Engh & Huber (2001)
Ideal geometry (DNA, RNA) : Parkinson et. al. (1996)
Validation Pipeline (wwPDB-VP) : stable22683

1 Overall quality at a glance

The reported resolution of this entry is 2.45 Å.

Percentile scores (ranging between 0-100) for global validation metrics of the entry are shown in the following graphic. The table shows the number of entries on which the scores are based.



Metric	Whole archive (#Entries)	Similar resolution (#Entries, resolution range(Å))
R_{free}	66092	3566 (2.50-2.42)
Clashscore	79885	4471 (2.50-2.42)
Ramachandran outliers	78287	4383 (2.50-2.42)
Sidechain outliers	78261	4385 (2.50-2.42)
RSRZ outliers	66119	3568 (2.50-2.42)

The table below summarises the geometric issues observed across the polymeric chains and their fit to the electron density. The red, orange, yellow and green segments on the lower bar indicate the fraction of residues that contain outliers for ≥ 3 , 2, 1 and 0 types of geometric quality criteria. The upper red bar (where present) indicates the fraction of residues that have poor fit to the electron density.

Mol	Chain	Length	Quality of chain
1	A	515	
1	B	515	
1	C	515	

2 Entry composition

There are 4 unique types of molecules in this entry. The entry contains 12050 atoms, of which 0 are hydrogen and 0 are deuterium.

In the tables below, the ZeroOcc column contains the number of atoms modelled with zero occupancy, the AltConf column contains the number of residues with at least one atom in alternate conformation and the Trace column contains the number of residues modelled with at most 2 atoms.

- Molecule 1 is a protein called RNA-dependent RNA polymerase.

Mol	Chain	Residues	Atoms					ZeroOcc	AltConf	Trace
1	A	475	Total	C	N	O	S	0	1	0
			3785	2395	666	699	25			
1	B	476	Total	C	N	O	S	0	2	0
			3792	2402	665	700	25			
1	C	474	Total	C	N	O	S	0	2	0
			3776	2388	663	700	25			

There are 24 discrepancies between the modelled and reference sequences:

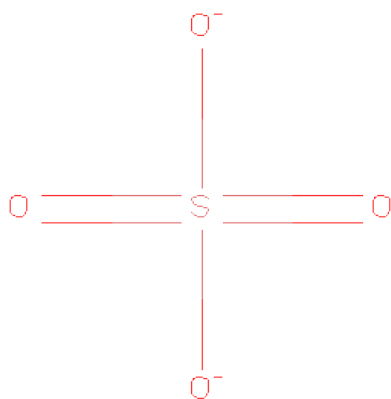
Chain	Residue	Modelled	Actual	Comment	Reference
A	508	LEU	-	EXPRESSION TAG	UNP Q80J95
A	509	GLU	-	EXPRESSION TAG	UNP Q80J95
A	510	HIS	-	EXPRESSION TAG	UNP Q80J95
A	511	HIS	-	EXPRESSION TAG	UNP Q80J95
A	512	HIS	-	EXPRESSION TAG	UNP Q80J95
A	513	HIS	-	EXPRESSION TAG	UNP Q80J95
A	514	HIS	-	EXPRESSION TAG	UNP Q80J95
A	515	HIS	-	EXPRESSION TAG	UNP Q80J95
B	508	LEU	-	EXPRESSION TAG	UNP Q80J95
B	509	GLU	-	EXPRESSION TAG	UNP Q80J95
B	510	HIS	-	EXPRESSION TAG	UNP Q80J95
B	511	HIS	-	EXPRESSION TAG	UNP Q80J95
B	512	HIS	-	EXPRESSION TAG	UNP Q80J95
B	513	HIS	-	EXPRESSION TAG	UNP Q80J95
B	514	HIS	-	EXPRESSION TAG	UNP Q80J95
B	515	HIS	-	EXPRESSION TAG	UNP Q80J95
C	508	LEU	-	EXPRESSION TAG	UNP Q80J95
C	509	GLU	-	EXPRESSION TAG	UNP Q80J95
C	510	HIS	-	EXPRESSION TAG	UNP Q80J95
C	511	HIS	-	EXPRESSION TAG	UNP Q80J95
C	512	HIS	-	EXPRESSION TAG	UNP Q80J95
C	513	HIS	-	EXPRESSION TAG	UNP Q80J95
C	514	HIS	-	EXPRESSION TAG	UNP Q80J95

Continued on next page...

Continued from previous page...

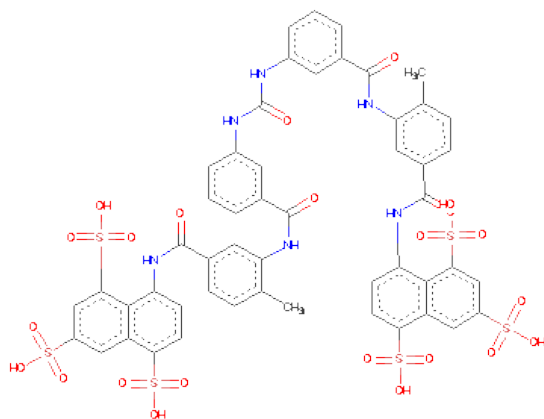
Chain	Residue	Modelled	Actual	Comment	Reference
C	515	HIS	-	EXPRESSION TAG	UNP Q80J95

- Molecule 2 is SULFATE ION (three-letter code: SO₄) (formula: O₄S).



Mol	Chain	Residues	Atoms			ZeroOcc	AltConf
2	A	1	Total	O	S	0	0
			5	4	1		
2	A	1	Total	O	S	0	0
			5	4	1		
2	A	1	Total	O	S	0	0
			5	4	1		
2	B	1	Total	O	S	0	0
			5	4	1		
2	C	1	Total	O	S	0	0
			5	4	1		
2	C	1	Total	O	S	0	0
			5	4	1		
2	C	1	Total	O	S	0	0
			5	4	1		

- Molecule 3 is 8,8'-[CARBONYLBIS[IMINO-3,1-PHENYLENECARBONYLIMINO(4-METHYL-3,1-PHENYLENE)CARBONYLIMINO]]BIS-1,3,5-NAPHTHALENETRISULFONIC ACID (three-letter code: SVR) (formula: C₅₁H₄₀N₆O₂₃S₆).



Mol	Chain	Residues	Atoms					ZeroOcc	AltConf
3	B	1	Total	C	N	O	S	0	0
			26	12	1	10	3		
3	C	1	Total	C	N	O	S	0	0
			26	12	1	10	3		
3	C	1	Total	C	N	O	S	0	0
			54	33	5	13	3		

- Molecule 4 is water.

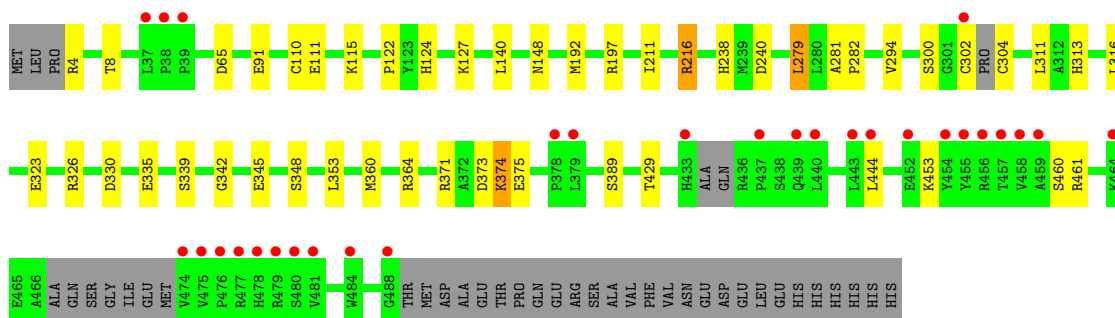
Mol	Chain	Residues	Atoms		ZeroOcc	AltConf
4	A	173	Total	O	0	0
			173	173		
4	B	166	Total	O	0	0
			166	166		
4	C	217	Total	O	0	0
			217	217		

3 Residue-property plots

These plots are drawn for all protein, RNA and DNA chains in the entry. The first graphic for a chain summarises the proportions of errors displayed in the second graphic. The second graphic shows the sequence view annotated by issues in geometry and electron density. Residues are color-coded according to the number of geometric quality criteria for which they contain at least one outlier: green = 0, yellow = 1, orange = 2 and red = 3 or more. A red dot above a residue indicates a poor fit to the electron density ($RSRZ > 2$). Stretches of 2 or more consecutive residues without any outlier are shown as a green connector. Residues present in the sample, but not in the model, are shown in grey.

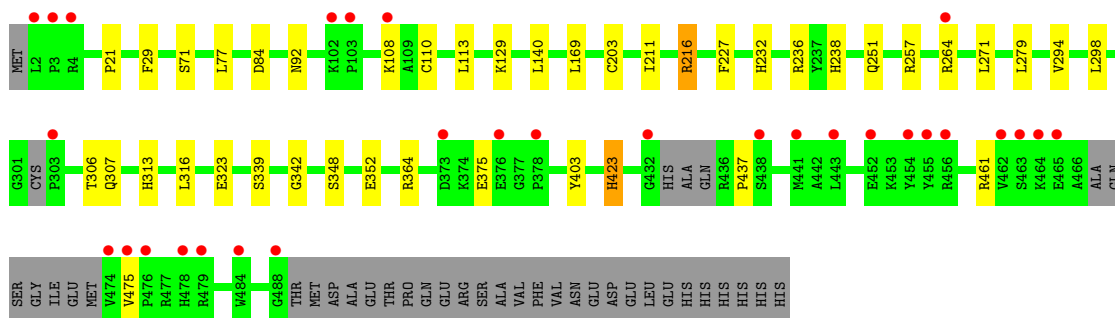
• Molecule 1: RNA-dependent RNA polymerase

Chain A: 



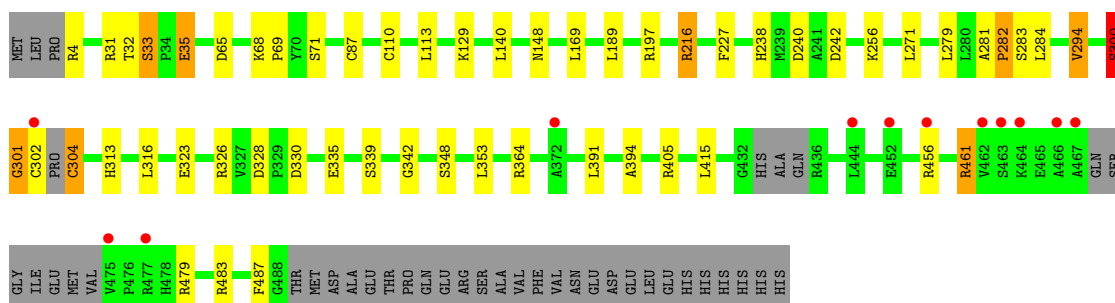
• Molecule 1: RNA-dependent RNA polymerase

Chain B: 



• Molecule 1: RNA-dependent RNA polymerase

Chain C: 



4 Data and refinement statistics

Property	Value	Source
Space group	C 1 2 1	Depositor
Cell constants a, b, c, α , β , γ	120.84Å 196.51Å 109.07Å 90.00° 114.55° 90.00°	Depositor
Resolution (Å)	48.00 – 2.45 48.08 – 2.45	Depositor EDS
% Data completeness (in resolution range)	97.4 (48.00-2.45) 97.4 (48.08-2.45)	Depositor EDS
R_{merge}	(Not available)	Depositor
R_{sym}	(Not available)	Depositor
$\langle I/\sigma(I) \rangle$ ¹	1.79 (at 2.45Å)	Xtriage
Refinement program	REFMAC 5.5.0109	Depositor
R, R_{free}	0.199 , 0.268 0.199 , 0.264	Depositor DCC
R_{free} test set	4102 reflections (5.25%)	DCC
Wilson B-factor (Å ²)	47.8	Xtriage
Anisotropy	0.095	Xtriage
Bulk solvent k_{sol} (e/Å ³), B_{sol} (Å ²)	0.34 , 45.3	EDS
Estimated twinning fraction	No twinning to report.	Xtriage
L-test for twinning	$\langle L \rangle = 0.46$, $\langle L^2 \rangle = 0.29$	Xtriage
Outliers	0 of 82297 reflections	Xtriage
F_o, F_c correlation	0.94	EDS
Total number of atoms	12050	wwPDB-VP
Average B, all atoms (Å ²)	56.0	wwPDB-VP

Xtriage's analysis on translational NCS is as follows: *The largest off-origin peak in the Patterson function is 7.00% of the height of the origin peak. No significant pseudotranslation is detected.*

¹Intensities estimated from amplitudes.

5 Model quality

5.1 Standard geometry

Bond lengths and bond angles in the following residue types are not validated in this section: SVR, SO4

The Z score for a bond length (or angle) is the number of standard deviations the observed value is removed from the expected value. A bond length (or angle) with $|Z| > 5$ is considered an outlier worth inspection. RMSZ is the root-mean-square of all Z scores of the bond lengths (or angles).

Mol	Chain	Bond lengths		Bond angles	
		RMSZ	$\# Z > 5$	RMSZ	$\# Z > 5$
1	A	0.58	0/3879	0.71	2/5250 (0.0%)
1	B	0.54	0/3890	0.64	0/5267
1	C	0.62	0/3872	0.71	1/5241 (0.0%)
All	All	0.58	0/11641	0.69	3/15758 (0.0%)

There are no bond length outliers.

All (3) bond angle outliers are listed below:

Mol	Chain	Res	Type	Atoms	Z	Observed(°)	Ideal(°)
1	A	279	LEU	CA-CB-CG	5.86	128.78	115.30
1	A	65	ASP	CB-CG-OD1	5.26	123.03	118.30
1	C	65	ASP	CB-CG-OD1	5.06	122.85	118.30

There are no chirality outliers.

There are no planarity outliers.

5.2 Close contacts

In the following table, the Non-H and H(model) columns list the number of non-hydrogen atoms and hydrogen atoms in the chain respectively. The H(added) column lists the number of hydrogens added by MolProbity. The Clashes column lists the number of clashes within the asymmetric unit, and the number in parentheses is this value normalized per 1000 atoms of the molecule in the chain. The Symm-Clashes column gives symmetry related clashes, in the same way as for the Clashes column.

Mol	Chain	Non-H	H(model)	H(added)	Clashes	Symm-Clashes
1	A	3785	0	0	22	0
1	B	3792	0	0	10	0
1	C	3776	0	0	23	0

Continued on next page...

Continued from previous page...

Mol	Chain	Non-H	H(model)	H(added)	Clashes	Symm-Clashes
2	A	15	0	0	0	0
2	B	5	0	0	0	0
2	C	15	0	0	0	0
3	B	26	0	0	2	0
3	C	80	0	0	6	0
4	A	173	0	0	2	0
4	B	166	0	0	1	0
4	C	217	0	0	5	0
All	All	12050	0	0	61	0

Clashscore is defined as the number of clashes calculated for the entry per 1000 atoms (including hydrogens) of the entry. The overall clashscore for this entry is 5.

All (61) close contacts within the same asymmetric unit are listed below.

Atom-1	Atom-2	Distance(Å)	Clash(Å)
1:C:110:CYS:SG	4:C:656:HOH:O	2.23	0.96
1:C:301:GLY:CA	1:C:302:CYS:CB	2.44	0.94
1:B:203[B]:CYS:SG	1:B:307:GLN:NE2	2.57	0.77
1:C:302:CYS:O	1:C:304:CYS:N	2.18	0.75
1:B:232:HIS:CE1	1:B:339:SER:OG	2.39	0.75
1:B:29:PHE:O	1:B:423:HIS:CE1	2.44	0.71
1:A:373:ASP:O	1:A:374:LYS:CB	2.40	0.68
1:A:371:ARG:NH2	1:A:373:ASP:OD1	2.27	0.67
1:B:110:CYS:SG	4:B:617:HOH:O	2.52	0.67
1:A:335:GLU:OE1	1:C:326:ARG:NH1	2.29	0.66
1:A:373:ASP:OD2	1:A:375:GLU:N	2.29	0.64
3:C:516:SVR:N63	3:C:516:SVR:S73	2.70	0.63
1:C:323:GLU:OE2	1:C:364:ARG:NH2	2.31	0.62
1:C:238:HIS:CD2	1:C:348:SER:OG	2.55	0.60
1:B:84:ASP:OD1	1:B:257:ARG:NH2	2.35	0.58
1:B:211:ILE:O	1:B:216:ARG:NH2	2.38	0.56
1:A:326:ARG:NH1	1:C:335:GLU:OE1	2.40	0.54
1:A:124:HIS:CE1	4:A:597:HOH:O	2.61	0.53
1:C:216:ARG:NH1	1:C:339:SER:OG	2.41	0.53
1:A:313:HIS:CD2	1:A:342:GLY:O	2.62	0.52
3:C:517:SVR:O25	3:C:517:SVR:N1	2.43	0.52
3:C:517:SVR:C26	3:C:517:SVR:C27	2.86	0.51
1:C:31:ARG:NH1	4:C:528:HOH:O	2.43	0.51
1:C:33:SER:OG	1:C:35:GLU:CG	2.59	0.51
1:C:283:SER:O	1:C:294:VAL:N	2.44	0.50
1:B:313:HIS:CD2	1:B:342:GLY:O	2.65	0.49
1:A:148:ASN:ND2	1:A:197:ARG:NH1	2.62	0.48

Continued on next page...

Continued from previous page...

Atom-1	Atom-2	Distance(Å)	Clash(Å)
1:B:238:HIS:CD2	1:B:348:SER:OG	2.67	0.48
1:C:300:SER:O	1:C:301:GLY:O	2.31	0.47
3:C:517:SVR:S17	3:C:517:SVR:N1	2.88	0.47
1:A:345:GLU:OE2	4:A:653:HOH:O	2.21	0.46
1:A:360[B]:MET:CE	1:A:360[B]:MET:CA	2.93	0.46
1:A:323:GLU:OE2	1:A:364:ARG:NH2	2.49	0.46
3:C:516:SVR:N63	3:C:516:SVR:O78	2.49	0.46
3:C:517:SVR:C42	3:C:517:SVR:N44	2.76	0.45
1:B:77:LEU:CD2	1:B:251:GLN:NE2	2.80	0.45
1:A:110:CYS:O	1:A:115:LYS:NZ	2.49	0.45
1:B:323:GLU:OE2	1:B:364:ARG:NH1	2.50	0.44
1:C:32:THR:OG1	1:C:415:LEU:O	2.34	0.44
1:C:68:LYS:N	1:C:69:PRO:CD	2.81	0.44
3:B:516:SVR:N63	3:B:516:SVR:S73	2.91	0.43
1:C:313:HIS:CD2	1:C:342:GLY:O	2.72	0.43
1:C:148:ASN:ND2	1:C:197:ARG:NH1	2.66	0.43
1:C:240:ASP:OD1	1:C:240:ASP:C	2.57	0.43
1:A:240:ASP:C	1:A:240:ASP:OD1	2.56	0.43
1:A:313:HIS:CE1	1:A:345:GLU:OE2	2.72	0.43
1:A:330:ASP:N	1:A:330:ASP:OD1	2.52	0.42
1:C:87:CYS:SG	4:C:682:HOH:O	2.62	0.42
3:B:516:SVR:O78	3:B:516:SVR:N63	2.53	0.42
1:C:394:ALA:O	1:C:405:ARG:N	2.52	0.42
1:C:281:ALA:O	1:C:282:PRO:C	2.57	0.42
1:C:483:ARG:NH2	4:C:630:HOH:O	2.53	0.42
1:A:281:ALA:O	1:A:282:PRO:C	2.57	0.42
1:A:238:HIS:CD2	1:A:348:SER:OG	2.74	0.41
1:A:127:LYS:NZ	1:A:192:MET:SD	2.93	0.41
1:A:122:PRO:O	1:A:124:HIS:CD2	2.74	0.41
1:A:216:ARG:NH1	1:A:339:SER:OG	2.54	0.41
1:A:371:ARG:CD	1:A:375:GLU:O	2.69	0.40
1:C:461:ARG:NH2	4:C:706:HOH:O	2.54	0.40
1:A:211:ILE:O	1:A:216:ARG:NH2	2.54	0.40

There are no symmetry-related clashes.

5.3 Torsion angles

5.3.1 Protein backbone ⓘ

In the following table, the Percentiles column shows the percent Ramachandran outliers of the chain as a percentile score with respect to all X-ray entries followed by that with respect to entries

of similar resolution. The Analysed column shows the number of residues for which the backbone conformation was analysed, and the total number of residues.

Mol	Chain	Analysed	Favoured	Allowed	Outliers	Percentiles	
1	A	468/515 (91%)	451 (96%)	16 (3%)	1 (0%)	56	77
1	B	470/515 (91%)	449 (96%)	20 (4%)	1 (0%)	56	77
1	C	468/515 (91%)	452 (97%)	12 (3%)	4 (1%)	25	39
All	All	1406/1545 (91%)	1352 (96%)	48 (3%)	6 (0%)	43	64

All (6) Ramachandran outliers are listed below:

Mol	Chain	Res	Type
1	C	301	GLY
1	A	300	SER
1	B	437	PRO
1	C	242	ASP
1	C	300	SER
1	C	282	PRO

5.3.2 Protein sidechains ⓘ

In the following table, the Percentiles column shows the percent sidechain outliers of the chain as a percentile score with respect to all X-ray entries followed by that with respect to entries of similar resolution. The Analysed column shows the number of residues for which the sidechain conformation was analysed, and the total number of residues.

Mol	Chain	Analysed	Rotameric	Outliers	Percentiles	
1	A	407/441 (92%)	387 (95%)	20 (5%)	35	57
1	B	409/441 (93%)	385 (94%)	24 (6%)	28	46
1	C	406/441 (92%)	380 (94%)	26 (6%)	25	41
All	All	1222/1323 (92%)	1152 (94%)	70 (6%)	28	48

All (70) residues with a non-rotameric sidechain are listed below:

Mol	Chain	Res	Type
1	A	4	ARG
1	A	8	THR
1	A	91	GLU
1	A	111	GLU
1	A	140	LEU
1	A	216	ARG

Continued on next page...

Continued from previous page...

Mol	Chain	Res	Type
1	A	279	LEU
1	A	294	VAL
1	A	302	CYS
1	A	304	CYS
1	A	311	LEU
1	A	316	LEU
1	A	353	LEU
1	A	374	LYS
1	A	389	SER
1	A	429	THR
1	A	444	LEU
1	A	453	LYS
1	A	460	SER
1	A	461	ARG
1	B	21	PRO
1	B	71	SER
1	B	92	ASN
1	B	108	LYS
1	B	113	LEU
1	B	129	LYS
1	B	140	LEU
1	B	169	LEU
1	B	216	ARG
1	B	227	PHE
1	B	236	ARG
1	B	264	ARG
1	B	271	LEU
1	B	279	LEU
1	B	294	VAL
1	B	298	LEU
1	B	306	THR
1	B	316	LEU
1	B	352	GLU
1	B	375	GLU
1	B	403	TYR
1	B	423	HIS
1	B	461	ARG
1	B	475	VAL
1	C	4	ARG
1	C	33	SER
1	C	35	GLU
1	C	71	SER

Continued on next page...

Continued from previous page...

Mol	Chain	Res	Type
1	C	113	LEU
1	C	129	LYS
1	C	140	LEU
1	C	169	LEU
1	C	189	LEU
1	C	216	ARG
1	C	227	PHE
1	C	256	LYS
1	C	271	LEU
1	C	279	LEU
1	C	284	LEU
1	C	294	VAL
1	C	300	SER
1	C	304	CYS
1	C	316	LEU
1	C	328	ASP
1	C	353	LEU
1	C	391	LEU
1	C	456	ARG
1	C	461	ARG
1	C	479	ARG
1	C	487	PHE

Some sidechains can be flipped to improve hydrogen bonding and reduce clashes. There are no such sidechains identified.

5.3.3 RNA ⓘ

There are no RNA chains in this entry.

5.4 Non-standard residues in protein, DNA, RNA chains ⓘ

There are no non-standard protein/DNA/RNA residues in this entry.

5.5 Carbohydrates ⓘ

There are no carbohydrates in this entry.

5.6 Ligand geometry ⓘ

10 ligands are modelled in this entry.

In the following table, the Counts columns list the number of bonds (or angles) for which Mogul statistics could be retrieved, the number of bonds (or angles) that are observed in the model and the number of bonds (or angles) that are defined in the chemical component dictionary. The Link column lists molecule types, if any, to which the group is linked. The Z score for a bond length (or angle) is the number of standard deviations the observed value is removed from the expected value. A bond length (or angle) with $|Z| > 2$ is considered an outlier worth inspection. RMSZ is the root-mean-square of all Z scores of the bond lengths (or angles).

Mol	Type	Chain	Res	Link	Bond lengths			Bond angles		
					Counts	RMSZ	$\# Z > 2$	Counts	RMSZ	$\# Z > 2$
2	SO4	A	516	-	4,4,4	0.13	0	6,6,6	0.36	0
2	SO4	A	517	-	4,4,4	0.19	0	6,6,6	0.18	0
2	SO4	A	518	-	4,4,4	0.10	0	6,6,6	0.11	0
3	SVR	B	516	-	26,27,93	1.27	1 (3%)	42,44,145	1.85	10 (23%)
2	SO4	B	517	-	4,4,4	0.18	0	6,6,6	0.20	0
3	SVR	C	516	-	26,27,93	1.24	2 (7%)	42,44,145	1.46	7 (16%)
3	SVR	C	517	-	57,58,93	2.51	15 (26%)	86,88,145	1.92	15 (17%)
2	SO4	C	518	-	4,4,4	0.28	0	6,6,6	0.55	0
2	SO4	C	519	-	4,4,4	0.39	0	6,6,6	0.26	0
2	SO4	C	520	-	4,4,4	0.18	0	6,6,6	0.15	0

In the following table, the Chirals column lists the number of chiral outliers, the number of chiral centers analysed, the number of these observed in the model and the number defined in the chemical component dictionary. Similar counts are reported in the Torsion and Rings columns. '-' means no outliers of that kind were identified.

Mol	Type	Chain	Res	Link	Chirals	Torsions	Rings
2	SO4	A	516	-	-	0/0/0/0	0/0/0/0
2	SO4	A	517	-	-	0/0/0/0	0/0/0/0
2	SO4	A	518	-	-	0/0/0/0	0/0/0/0
3	SVR	B	516	-	-	0/22/22/76	0/0/2/8
2	SO4	B	517	-	-	0/0/0/0	0/0/0/0
3	SVR	C	516	-	-	0/22/22/76	0/0/2/8
3	SVR	C	517	-	-	0/46/46/76	0/3/5/8
2	SO4	C	518	-	-	0/0/0/0	0/0/0/0
2	SO4	C	519	-	-	0/0/0/0	0/0/0/0
2	SO4	C	520	-	-	0/0/0/0	0/0/0/0

All (18) bond length outliers are listed below:

Mol	Chain	Res	Type	Atoms	Z	Observed(Å)	Ideal(Å)
3	C	517	SVR	O54-C51	11.88	1.53	1.25
3	C	517	SVR	C27-C20	-6.73	1.36	1.51
3	C	517	SVR	C49-C51	-5.30	1.40	1.50
3	C	517	SVR	C5-C2	-5.20	1.39	1.50
3	C	517	SVR	C33-C26	-4.37	1.41	1.50
3	B	516	SVR	C69-S73	-3.33	1.70	1.78
3	C	517	SVR	C39-N41	-3.27	1.35	1.41
3	C	517	SVR	C46-N44	-3.24	1.35	1.41
3	C	517	SVR	C3-N1	-2.64	1.33	1.41
3	C	517	SVR	C18-C11	2.46	1.40	1.37
3	C	517	SVR	C13-N19	-2.41	1.37	1.41
3	C	517	SVR	O28-S21	2.17	1.54	1.43
3	C	517	SVR	O29-S21	2.13	1.54	1.43
3	C	516	SVR	C71-C68	-2.11	1.40	1.43
3	C	517	SVR	O36-S31	2.06	1.53	1.43
3	C	517	SVR	O24-S17	2.06	1.53	1.43
3	C	517	SVR	O35-S31	2.03	1.53	1.43
3	C	516	SVR	C65-N63	-2.00	1.35	1.41

All (32) bond angle outliers are listed below:

Mol	Chain	Res	Type	Atoms	Z	Observed(°)	Ideal(°)
3	C	517	SVR	C14-C20-C13	6.30	122.67	117.42
3	C	517	SVR	C3-N1-C2	-5.92	110.40	128.84
3	C	517	SVR	N44-C43-N41	5.64	121.55	112.57
3	B	516	SVR	C74-C69-S73	-5.53	111.65	117.67
3	C	517	SVR	C16-C10-C15	-4.84	117.49	123.20
3	C	517	SVR	O24-S17-C11	4.64	111.46	106.20
3	C	517	SVR	C15-C10-C6	4.44	121.81	118.03
3	B	516	SVR	C66-C69-S73	4.16	125.95	121.05
3	C	516	SVR	O77-S73-C69	4.09	110.83	106.20
3	C	517	SVR	C6-C11-S17	3.72	125.43	121.05
3	C	517	SVR	O28-S21-C15	3.61	110.29	106.20
3	B	516	SVR	O78-S73-C69	3.61	110.29	106.20
3	B	516	SVR	O81-S75-C71	3.46	110.12	106.20
3	C	517	SVR	O45-C43-N41	-3.33	117.94	123.54
3	C	516	SVR	C72-C68-C71	-3.31	119.30	123.20
3	B	516	SVR	C72-C68-C71	-3.27	119.34	123.20
3	C	517	SVR	C46-N44-C43	-3.18	120.44	126.66
3	B	516	SVR	O80-S75-C71	3.16	109.78	106.20
3	C	517	SVR	O25-S17-C11	3.02	109.77	106.09
3	C	517	SVR	C18-C11-S17	-2.83	114.59	117.67
3	C	516	SVR	O81-S75-C71	2.77	109.34	106.20

Continued on next page...

Continued from previous page...

Mol	Chain	Res	Type	Atoms	Z	Observed(°)	Ideal(°)
3	B	516	SVR	C71-C68-C66	2.64	120.28	118.03
3	C	516	SVR	O82-S75-C71	2.64	109.30	106.09
3	C	517	SVR	O30-S21-C15	2.60	109.26	106.09
3	C	516	SVR	C71-C68-C66	2.53	120.18	118.03
3	C	516	SVR	O79-S73-C69	2.46	109.08	106.09
3	B	516	SVR	C72-C76-S83	2.39	124.13	119.92
3	C	517	SVR	O4-C2-C5	-2.20	117.14	121.01
3	B	516	SVR	O82-S75-C71	2.20	108.77	106.09
3	C	517	SVR	O34-S31-C22	2.18	112.56	106.91
3	B	516	SVR	C67-C65-N63	-2.14	116.91	123.07
3	C	516	SVR	C65-C66-C69	-2.02	122.86	126.66

There are no chirality outliers.

There are no torsion outliers.

There are no ring outliers.

5.7 Other polymers ⓘ

There are no such residues in this entry.

5.8 Polymer linkage issues

There are no chain breaks in this entry.

6 Fit of model and data ⓘ

6.1 Protein, DNA and RNA chains ⓘ

In the following table, the column labelled ‘#RSRZ > 2’ contains the number (and percentage) of RSRZ outliers, followed by percent RSRZ outliers for the chain as percentile scores relative to all X-ray entries and entries of similar resolution. The OWAB column contains the minimum, median, 95th percentile and maximum values of the occupancy-weighted average B-factor per residue. The column labelled ‘Q < 0.9’ lists the number of (and percentage) of residues with an average occupancy less than 0.9.

Mol	Chain	Analysed	<RSRZ>	#RSRZ > 2		OWAB(Å ²)	Q < 0.9
1	A	475/515 (92%)	0.16	30 (6%)	19 19	30, 50, 105, 124	7 (1%)
1	B	476/515 (92%)	0.20	30 (6%)	19 19	36, 58, 102, 124	7 (1%)
1	C	474/515 (92%)	-0.03	12 (2%)	54 56	25, 44, 83, 120	7 (1%)
All	All	1425/1545 (92%)	0.11	72 (5%)	28 27	25, 51, 99, 124	21 (1%)

All (72) RSRZ outliers are listed below:

Mol	Chain	Res	Type	RSRZ
1	A	39	PRO	6.7
1	B	103	PRO	5.4
1	B	484	TRP	5.4
1	B	378	PRO	5.2
1	B	2	LEU	5.1
1	A	476	PRO	5.1
1	A	454	TYR	5.0
1	A	475	VAL	4.9
1	B	474	VAL	4.7
1	A	481	VAL	4.7
1	A	484	TRP	4.5
1	A	474	VAL	4.5
1	A	455	TYR	4.4
1	B	456	ARG	4.4
1	B	479	ARG	4.4
1	B	303	PRO	4.2
1	C	302	CYS	4.1
1	A	443	LEU	3.9
1	C	466	ALA	3.9
1	A	477	ARG	3.9
1	B	488	GLY	3.8
1	B	475	VAL	3.7
1	A	480	SER	3.7

Continued on next page...

Continued from previous page...

Mol	Chain	Res	Type	RSRZ
1	B	463	SER	3.7
1	A	444	LEU	3.7
1	B	464	LYS	3.6
1	C	462	VAL	3.6
1	A	379	LEU	3.5
1	C	464	LYS	3.5
1	A	458	VAL	3.5
1	A	378	PRO	3.5
1	B	3	PRO	3.5
1	C	475	VAL	3.4
1	A	459	ALA	3.4
1	A	478	HIS	3.4
1	A	452	GLU	3.2
1	C	456	ARG	3.2
1	B	455	TYR	3.1
1	B	452	GLU	3.0
1	B	462	VAL	2.9
1	A	479	ARG	2.9
1	B	376	GLU	2.9
1	B	478	HIS	2.8
1	B	454	TYR	2.8
1	B	432	GLY	2.8
1	B	443	LEU	2.8
1	A	302	CYS	2.7
1	B	465	GLU	2.7
1	C	463	SER	2.7
1	B	102	LYS	2.7
1	B	476	PRO	2.6
1	B	4	ARG	2.5
1	C	467	ALA	2.5
1	A	456	ARG	2.5
1	A	464	LYS	2.5
1	A	433	HIS	2.4
1	A	457	THR	2.3
1	C	444	LEU	2.3
1	B	108	LYS	2.3
1	C	372	ALA	2.3
1	A	38	PRO	2.3
1	C	452	GLU	2.3
1	B	438	SER	2.2
1	B	441	MET	2.2
1	B	373	ASP	2.1

Continued on next page...

Continued from previous page...

Mol	Chain	Res	Type	RSRZ
1	A	440	LEU	2.1
1	B	264	ARG	2.1
1	A	488	GLY	2.1
1	A	437	PRO	2.1
1	A	37	LEU	2.1
1	C	477	ARG	2.0
1	A	439	GLN	2.0

6.2 Non-standard residues in protein, DNA, RNA chains ⓘ

There are no non-standard protein/DNA/RNA residues in this entry.

6.3 Carbohydrates ⓘ

There are no carbohydrates in this entry.

6.4 Ligands ⓘ

In the following table, the Atoms column lists the number of modelled atoms in the group and the number defined in the chemical component dictionary. LLDF column lists the quality of electron density of the group with respect to its neighbouring residues in protein, DNA or RNA chains. The B-factors column lists the minimum, median, 95th percentile and maximum values of B factors of atoms in the group. The column labelled 'Q < 0.9' lists the number of atoms with occupancy less than 0.9.

Mol	Type	Chain	Res	Atoms	RSR	LLDF	B-factors(Å ²)	Q<0.9
2	SO4	A	518	5/5	0.23	1.74	124,124,125,127	0
3	SVR	C	517	54/86	0.22	1.56	87,95,127,130	0
3	SVR	C	516	26/86	0.18	1.27	82,96,102,104	0
2	SO4	B	517	5/5	0.16	1.10	133,134,135,135	0
3	SVR	B	516	26/86	0.17	0.74	112,121,130,131	0
2	SO4	C	519	5/5	0.15	0.34	92,94,97,98	0
2	SO4	A	516	5/5	0.18	0.00	112,115,116,116	0
2	SO4	A	517	5/5	0.17	-0.16	155,155,155,156	0
2	SO4	C	518	5/5	0.11	-0.60	72,79,86,88	0
2	SO4	C	520	5/5	0.11	-1.70	93,94,96,96	0

6.5 Other polymers ⓘ

There are no such residues in this entry.