



# Full wwPDB X-ray Structure Validation Report

Feb 28, 2014 – 12:48 PM GMT

PDB ID : 3URQ  
Title : Crystal Structure of PTE mutant H254G/H257W/L303T/M317L/I106C/F132I/L271I/K185R/I274N/A80V/R67H with cyclohexyl methylphosphonate inhibitor  
Authors : Tsai, P.; Fox, N.G.; Li, Y.; Barondeau, D.P.; Raushel, F.M.  
Deposited on : 2011-11-22  
Resolution : 2.10 Å (reported)

This is a full wwPDB validation report for a publicly released PDB entry.  
We welcome your comments at [validation@mail.wwpdb.org](mailto:validation@mail.wwpdb.org)  
A user guide is available at <http://wwpdb.org/ValidationPDFNotes.html>

---

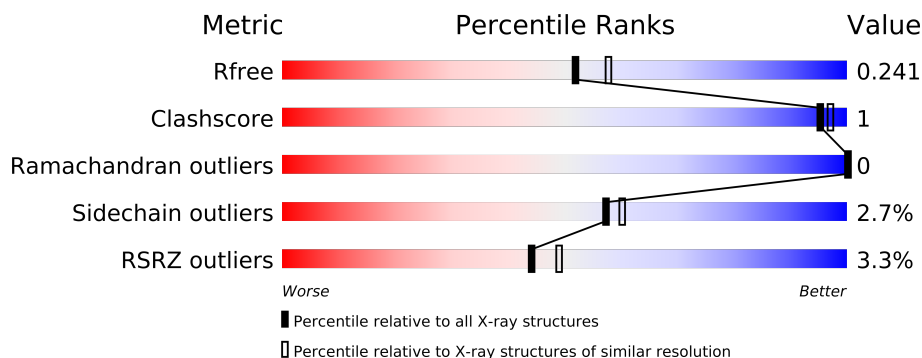
The following versions of software and data (see [references](#)) were used in the production of this report:

MolProbity	:	4.02b-467
Mogul	:	1.15 2013
Xtriage (Phenix)	:	dev-1323
EDS	:	stable22639
Percentile statistics	:	21963
Refmac	:	5.8.0049
CCP4	:	6.3.0 (Settle)
Ideal geometry (proteins)	:	Engh & Huber (2001)
Ideal geometry (DNA, RNA)	:	Parkinson et. al. (1996)
Validation Pipeline (wwPDB-VP)	:	stable22683

# 1 Overall quality at a glance

The reported resolution of this entry is 2.10 Å.

Percentile scores (ranging between 0-100) for global validation metrics of the entry are shown in the following graphic. The table shows the number of entries on which the scores are based.



Metric	Whole archive (#Entries)	Similar resolution (#Entries, resolution range(Å))
$R_{free}$	66092	3012 (2.10-2.10)
Clashscore	79885	3649 (2.10-2.10)
Ramachandran outliers	78287	3610 (2.10-2.10)
Sidechain outliers	78261	3611 (2.10-2.10)
RSRZ outliers	66119	3013 (2.10-2.10)

The table below summarises the geometric issues observed across the polymeric chains and their fit to the electron density. The red, orange, yellow and green segments on the lower bar indicate the fraction of residues that contain outliers for  $\geq 3$ , 2, 1 and 0 types of geometric quality criteria. The upper red bar (where present) indicates the fraction of residues that have poor fit to the electron density.

Mol	Chain	Length	Quality of chain
1	A	327	
1	B	327	

The following table lists non-polymeric compounds that are outliers for geometric or electron-density-fit criteria:

Mol	Type	Chain	Res	Geometry	Electron density
3	QMP	A	902	-	X
3	QMP	B	901	-	X
4	IMD	A	904	-	X
4	IMD	A	906	-	X
4	IMD	B	905	-	X

## 2 Entry composition

There are 5 unique types of molecules in this entry. The entry contains 5319 atoms, of which 0 are hydrogen and 0 are deuterium.

In the tables below, the ZeroOcc column contains the number of atoms modelled with zero occupancy, the AltConf column contains the number of residues with at least one atom in alternate conformation and the Trace column contains the number of residues modelled with at most 2 atoms.

- Molecule 1 is a protein called Parathion hydrolase.

Mol	Chain	Residues	Atoms					ZeroOcc	AltConf	Trace
1	A	327	Total	C	N	O	S	0	0	0
			2497	1576	443	471	7			
1	B	322	Total	C	N	O	S	0	0	0
			2460	1555	437	461	7			

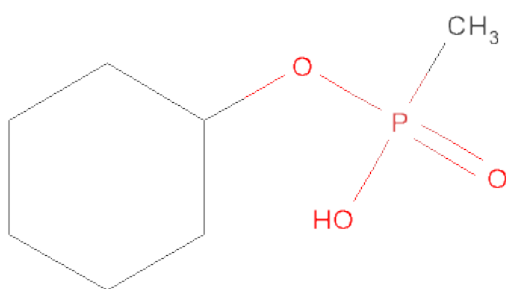
There are 22 discrepancies between the modelled and reference sequences:

Chain	Residue	Modelled	Actual	Comment	Reference
A	67	HIS	ARG	ENGINEERED MUTATION	UNP P0A434
A	80	VAL	ALA	ENGINEERED MUTATION	UNP P0A434
A	106	CYS	ILE	ENGINEERED MUTATION	UNP P0A434
A	132	ILE	PHE	ENGINEERED MUTATION	UNP P0A434
A	185	ARG	LYS	ENGINEERED MUTATION	UNP P0A434
A	254	GLY	HIS	ENGINEERED MUTATION	UNP P0A434
A	257	TRP	HIS	ENGINEERED MUTATION	UNP P0A434
A	271	ILE	LEU	ENGINEERED MUTATION	UNP P0A434
A	274	ASN	ILE	ENGINEERED MUTATION	UNP P0A434
A	303	THR	LEU	ENGINEERED MUTATION	UNP P0A434
A	317	LEU	MET	ENGINEERED MUTATION	UNP P0A434
B	67	HIS	ARG	ENGINEERED MUTATION	UNP P0A434
B	80	VAL	ALA	ENGINEERED MUTATION	UNP P0A434
B	106	CYS	ILE	ENGINEERED MUTATION	UNP P0A434
B	132	ILE	PHE	ENGINEERED MUTATION	UNP P0A434
B	185	ARG	LYS	ENGINEERED MUTATION	UNP P0A434
B	254	GLY	HIS	ENGINEERED MUTATION	UNP P0A434
B	257	TRP	HIS	ENGINEERED MUTATION	UNP P0A434
B	271	ILE	LEU	ENGINEERED MUTATION	UNP P0A434
B	274	ASN	ILE	ENGINEERED MUTATION	UNP P0A434
B	303	THR	LEU	ENGINEERED MUTATION	UNP P0A434
B	317	LEU	MET	ENGINEERED MUTATION	UNP P0A434

- Molecule 2 is COBALT (II) ION (three-letter code: CO) (formula: Co).

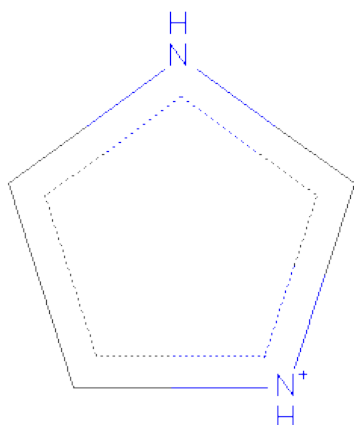
Mol	Chain	Residues	Atoms		ZeroOcc	AltConf
2	B	2	Total	Co	0	0
			2	2		
2	A	2	Total	Co	0	0
			2	2		

- Molecule 3 is CYCLOHEXYL METHYLPHOSPHONATE (three-letter code: QMP) (formula:  $C_7H_{15}O_3P$ ).



Mol	Chain	Residues	Atoms				ZeroOcc	AltConf
3	A	1	Total	C	O	P	0	0
			11	7	3	1		
3	B	1	Total	C	O	P	0	0
			11	7	3	1		

- Molecule 4 is IMIDAZOLE (three-letter code: IMD) (formula:  $C_3H_5N_2$ ).



Mol	Chain	Residues	Atoms			ZeroOcc	AltConf
4	A	1	Total	C	N	0	0
			5	3	2		
4	A	1	Total	C	N	0	0
			5	3	2		
4	A	1	Total	C	N	0	0
			5	3	2		
4	B	1	Total	C	N	0	0
			5	3	2		

- Molecule 5 is water.

Mol	Chain	Residues	Atoms		ZeroOcc	AltConf
5	A	182	Total	O	0	0
			182	182		
5	B	134	Total	O	0	0
			134	134		

### 3 Residue-property plots i

These plots are drawn for all protein, RNA and DNA chains in the entry. The first graphic for a chain summarises the proportions of errors displayed in the second graphic. The second graphic shows the sequence view annotated by issues in geometry and electron density. Residues are color-coded according to the number of geometric quality criteria for which they contain at least one outlier: green = 0, yellow = 1, orange = 2 and red = 3 or more. A red dot above a residue indicates a poor fit to the electron density ( $\text{RSRZ} > 2$ ). Stretches of 2 or more consecutive residues without any outlier are shown as a green connector. Residues present in the sample, but not in the model, are shown in grey.

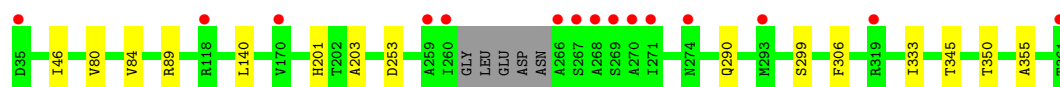
- Molecule 1: Parathion hydrolase

Chain A: 



- Molecule 1: Parathion hydrolase

Chain B: 



## 4 Data and refinement statistics

Property	Value	Source
Space group	P 21 21 2	Depositor
Cell constants a, b, c, $\alpha$ , $\beta$ , $\gamma$	85.49Å 85.28Å 87.87Å 90.00° 90.00° 90.00°	Depositor
Resolution (Å)	50.00 – 2.10 35.52 – 2.10	Depositor EDS
% Data completeness (in resolution range)	99.5 (50.00-2.10) 99.7 (35.52-2.10)	Depositor EDS
$R_{merge}$	(Not available)	Depositor
$R_{sym}$	0.01	Depositor
$\langle I/\sigma(I) \rangle$ <sup>1</sup>	4.25 (at 2.10Å)	Xtriage
Refinement program	CNS	Depositor
R, $R_{free}$	0.203 , 0.235 0.211 , 0.241	Depositor DCC
$R_{free}$ test set	1899 reflections (5.00%)	DCC
Wilson B-factor (Å <sup>2</sup> )	32.0	Xtriage
Anisotropy	0.338	Xtriage
Bulk solvent $k_{sol}$ (e/Å <sup>3</sup> ), $B_{sol}$ (Å <sup>2</sup> )	0.31 , 25.4	EDS
Estimated twinning fraction	0.019 for l,-k,h 0.021 for -h,-l,-k 0.019 for k,h,-l 0.006 for l,h,k 0.006 for k,l,h	Xtriage
L-test for twinning	$\langle  L  \rangle = 0.48$ , $\langle L^2 \rangle = 0.32$	Xtriage
Outliers	1 of 37994 reflections (0.003%)	Xtriage
$F_o, F_c$ correlation	0.95	EDS
Total number of atoms	5319	wwPDB-VP
Average B, all atoms (Å <sup>2</sup> )	38.0	wwPDB-VP

Xtriage's analysis on translational NCS is as follows: *The largest off-origin peak in the Patterson function is 5.73% of the height of the origin peak. No significant pseudotranslation is detected.*

<sup>1</sup>Intensities estimated from amplitudes.

## 5 Model quality

### 5.1 Standard geometry

Bond lengths and bond angles in the following residue types are not validated in this section: QMP, CO, IMD, KCX

The Z score for a bond length (or angle) is the number of standard deviations the observed value is removed from the expected value. A bond length (or angle) with  $|Z| > 5$  is considered an outlier worth inspection. RMSZ is the root-mean-square of all Z scores of the bond lengths (or angles).

Mol	Chain	Bond lengths		Bond angles	
		RMSZ	$\# Z  > 5$	RMSZ	$\# Z  > 5$
1	A	0.62	0/2532	0.76	2/3441 (0.1%)
1	B	0.62	0/2494	0.75	2/3388 (0.1%)
All	All	0.62	0/5026	0.76	4/6829 (0.1%)

There are no bond length outliers.

All (4) bond angle outliers are listed below:

Mol	Chain	Res	Type	Atoms	Z	Observed(°)	Ideal(°)
1	A	203	ALA	N-CA-C	-6.53	93.36	111.00
1	B	203	ALA	N-CA-C	-6.12	94.48	111.00
1	A	253	ASP	N-CA-C	5.23	125.12	111.00
1	B	253	ASP	N-CA-C	5.11	124.79	111.00

There are no chirality outliers.

There are no planarity outliers.

### 5.2 Close contacts

In the following table, the Non-H and H(model) columns list the number of non-hydrogen atoms and hydrogen atoms in the chain respectively. The H(added) column lists the number of hydrogens added by MolProbity. The Clashes column lists the number of clashes within the asymmetric unit, and the number in parentheses is this value normalized per 1000 atoms of the molecule in the chain. The Symm-Clashes column gives symmetry related clashes, in the same way as for the Clashes column.

Mol	Chain	Non-H	H(model)	H(added)	Clashes	Symm-Clashes
1	A	2497	0	2502	6	0
1	B	2460	0	2471	5	0
2	A	2	0	0	0	0

*Continued on next page...*



*Continued from previous page...*

Mol	Chain	Non-H	H(model)	H(added)	Clashes	Symm-Clashes
2	B	2	0	0	0	0
3	A	11	0	14	6	0
3	B	11	0	14	2	0
4	A	15	0	15	0	0
4	B	5	0	5	0	0
5	A	182	0	0	1	0
5	B	134	0	0	0	0
All	All	5319	0	5021	13	0

Clashscore is defined as the number of clashes calculated for the entry per 1000 atoms (including hydrogens) of the entry. The overall clashscore for this entry is 1.

All (13) close contacts within the same asymmetric unit are listed below.

Atom-1	Atom-2	Distance(Å)	Clash(Å)
3:A:902:QMP:H9	3:A:902:QMP:OAC	1.68	0.94
1:A:60:GLY:HA3	3:A:902:QMP:H4	1.49	0.92
1:B:201:HIS:HE1	3:B:901:QMP:H12	1.61	0.65
3:A:902:QMP:CAH	3:A:902:QMP:OAC	2.47	0.60
1:B:201:HIS:CE1	3:B:901:QMP:H12	2.40	0.55
1:A:303:THR:HG21	3:A:902:QMP:H5	1.93	0.50
1:A:306:PHE:CE1	3:A:902:QMP:H3	2.46	0.49
1:B:46:ILE:HG23	1:B:355:ALA:HB1	1.95	0.48
1:B:333:ILE:HD11	1:B:350:THR:HG21	1.98	0.46
1:A:293:MET:HE2	5:A:1169:HOH:O	2.16	0.45
1:A:303:THR:CG2	3:A:902:QMP:H5	2.48	0.43
1:A:169:KCX:OQ1	1:A:201:HIS:HB2	2.20	0.42
1:B:80:VAL:O	1:B:84:VAL:HG23	2.20	0.41

There are no symmetry-related clashes.

## 5.3 Torsion angles

### 5.3.1 Protein backbone ⓘ

In the following table, the Percentiles column shows the percent Ramachandran outliers of the chain as a percentile score with respect to all X-ray entries followed by that with respect to entries of similar resolution. The Analysed column shows the number of residues for which the backbone conformation was analysed, and the total number of residues.

Mol	Chain	Analysed	Favoured	Allowed	Outliers	Percentiles
1	A	324/327 (99%)	312 (96%)	12 (4%)	0	100 100

*Continued on next page...*

*Continued from previous page...*

Mol	Chain	Analysed	Favoured	Allowed	Outliers	Percentiles	
1	B	317/327 (97%)	305 (96%)	12 (4%)	0	100	100
All	All	641/654 (98%)	617 (96%)	24 (4%)	0	100	100

There are no Ramachandran outliers to report.

### 5.3.2 Protein sidechains ⓘ

In the following table, the Percentiles column shows the percent sidechain outliers of the chain as a percentile score with respect to all X-ray entries followed by that with respect to entries of similar resolution. The Analysed column shows the number of residues for which the sidechain conformation was analysed, and the total number of residues.

Mol	Chain	Analysed	Rotameric	Outliers	Percentiles	
1	A	262/262 (100%)	254 (97%)	8 (3%)	52	54
1	B	258/262 (98%)	252 (98%)	6 (2%)	63	66
All	All	520/524 (99%)	506 (97%)	14 (3%)	57	60

All (14) residues with a non-rotameric sidechain are listed below:

Mol	Chain	Res	Type
1	A	140	LEU
1	A	152	ARG
1	A	178	PRO
1	A	262	LEU
1	A	263	GLU
1	A	264	ASP
1	A	299	SER
1	A	306	PHE
1	B	89	ARG
1	B	140	LEU
1	B	290	GLN
1	B	299	SER
1	B	306	PHE
1	B	345	THR

Some sidechains can be flipped to improve hydrogen bonding and reduce clashes. There are no such sidechains identified.

### 5.3.3 RNA ⓘ

There are no RNA chains in this entry.

## 5.4 Non-standard residues in protein, DNA, RNA chains ⓘ

2 non-standard protein/DNA/RNA residues are modelled in this entry.

In the following table, the Counts columns list the number of bonds (or angles) for which Mogul statistics could be retrieved, the number of bonds (or angles) that are observed in the model and the number of bonds (or angles) that are defined in the chemical component dictionary. The Link column lists molecule types, if any, to which the group is linked. The Z score for a bond length (or angle) is the number of standard deviations the observed value is removed from the expected value. A bond length (or angle) with  $|Z| > 2$  is considered an outlier worth inspection. RMSZ is the root-mean-square of all Z scores of the bond lengths (or angles).

Mol	Type	Chain	Res	Link	Bond lengths			Bond angles		
					Counts	RMSZ	$\# Z  > 2$	Counts	RMSZ	$\# Z  > 2$
1	KCX	A	169	1,2	11,11,12	5.40	2 (18%)	10,12,14	2.02	2 (20%)
1	KCX	B	169	1,2	11,11,12	5.37	2 (18%)	10,12,14	2.01	2 (20%)

In the following table, the Chirals column lists the number of chiral outliers, the number of chiral centers analysed, the number of these observed in the model and the number defined in the chemical component dictionary. Similar counts are reported in the Torsion and Rings columns. '-' means no outliers of that kind were identified.

Mol	Type	Chain	Res	Link	Chirals	Torsions	Rings
1	KCX	A	169	1,2	-	0/8/10/12	0/0/0/0
1	KCX	B	169	1,2	-	0/8/10/12	0/0/0/0

All (4) bond length outliers are listed below:

Mol	Chain	Res	Type	Atoms	Z	Observed(Å)	Ideal(Å)
1	A	169	KCX	O-C	17.54	1.23	1.11
1	B	169	KCX	O-C	17.46	1.23	1.11
1	A	169	KCX	CA-C	2.77	1.53	1.48
1	B	169	KCX	CA-C	2.71	1.53	1.48

All (4) bond angle outliers are listed below:

Mol	Chain	Res	Type	Atoms	Z	Observed(°)	Ideal(°)
1	A	169	KCX	C-CA-N	-4.23	109.60	113.83
1	B	169	KCX	OQ1-CX-NZ	-4.17	118.01	124.94
1	A	169	KCX	OQ1-CX-NZ	-4.14	118.05	124.94

*Continued on next page...*

*Continued from previous page...*

Mol	Chain	Res	Type	Atoms	Z	Observed(°)	Ideal(°)
1	B	169	KCX	C-CA-N	-4.06	109.78	113.83

There are no chirality outliers.

There are no torsion outliers.

There are no ring outliers.

## 5.5 Carbohydrates i

There are no carbohydrates in this entry.

## 5.6 Ligand geometry i

Of 10 ligands modelled in this entry, 4 are monoatomic - leaving 6 for Mogul analysis.

In the following table, the Counts columns list the number of bonds (or angles) for which Mogul statistics could be retrieved, the number of bonds (or angles) that are observed in the model and the number of bonds (or angles) that are defined in the chemical component dictionary. The Link column lists molecule types, if any, to which the group is linked. The Z score for a bond length (or angle) is the number of standard deviations the observed value is removed from the expected value. A bond length (or angle) with  $|Z| > 2$  is considered an outlier worth inspection. RMSZ is the root-mean-square of all Z scores of the bond lengths (or angles).

Mol	Type	Chain	Res	Link	Bond lengths			Bond angles		
					Counts	RMSZ	$\# Z  > 2$	Counts	RMSZ	$\# Z  > 2$
3	QMP	A	902	-	11,11,11	1.54	1 (9%)	15,15,15	1.05	1 (6%)
4	IMD	A	903	-	5,5,5	0.72	0	5,5,5	0.50	0
4	IMD	A	904	-	5,5,5	0.70	0	5,5,5	0.54	0
4	IMD	A	906	-	5,5,5	0.68	0	5,5,5	0.54	0
3	QMP	B	901	2	11,11,11	0.94	0	15,15,15	0.48	0
4	IMD	B	905	-	5,5,5	0.69	0	5,5,5	0.46	0

In the following table, the Chirals column lists the number of chiral outliers, the number of chiral centers analysed, the number of these observed in the model and the number defined in the chemical component dictionary. Similar counts are reported in the Torsion and Rings columns. '-' means no outliers of that kind were identified.

Mol	Type	Chain	Res	Link	Chirals	Torsions	Rings
3	QMP	A	902	-	-	0/5/13/13	0/1/1/1
4	IMD	A	903	-	-	0/0/0/0	0/1/1/1
4	IMD	A	904	-	-	0/0/0/0	0/1/1/1

*Continued on next page...*

*Continued from previous page...*

Mol	Type	Chain	Res	Link	Chirals	Torsions	Rings
4	IMD	A	906	-	-	0/0/0/0	0/1/1/1
3	QMP	B	901	2	-	0/5/13/13	0/1/1/1
4	IMD	B	905	-	-	0/0/0/0	0/1/1/1

All (1) bond length outliers are listed below:

Mol	Chain	Res	Type	Atoms	Z	Observed(Å)	Ideal(Å)
3	A	902	QMP	PAK-OAC	4.30	1.61	1.51

All (1) bond angle outliers are listed below:

Mol	Chain	Res	Type	Atoms	Z	Observed(°)	Ideal(°)
3	A	902	QMP	OAC-PAK-CAA	-2.28	105.87	114.23

There are no chirality outliers.

There are no torsion outliers.

There are no ring outliers.

## 5.7 Other polymers ⓘ

There are no such residues in this entry.

## 5.8 Polymer linkage issues

There are no chain breaks in this entry.

## 6 Fit of model and data ⓘ

### 6.1 Protein, DNA and RNA chains ⓘ

In the following table, the column labelled ‘#RSRZ> 2’ contains the number (and percentage) of RSRZ outliers, followed by percent RSRZ outliers for the chain as percentile scores relative to all X-ray entries and entries of similar resolution. The OWAB column contains the minimum, median, 95<sup>th</sup> percentile and maximum values of the occupancy-weighted average B-factor per residue. The column labelled ‘Q< 0.9’ lists the number of (and percentage) of residues with an average occupancy less than 0.9.

Mol	Chain	Analysed	<RSRZ>	#RSRZ>2	OWAB(Å <sup>2</sup> )	Q<0.9
1	A	327/327 (100%)	0.01	7 (2%) 60 65	23, 32, 58, 76	0
1	B	322/327 (98%)	0.20	15 (4%) 30 33	21, 36, 65, 97	0
All	All	649/654 (99%)	0.10	22 (3%) 44 47	21, 34, 62, 97	0

All (22) RSRZ outliers are listed below:

Mol	Chain	Res	Type	RSRZ
1	B	269	SER	6.0
1	B	270	ALA	5.5
1	A	262	LEU	5.2
1	B	274	ASN	4.9
1	B	259	ALA	4.9
1	A	261	GLY	4.7
1	B	260	ILE	3.8
1	B	271	ILE	3.6
1	B	268	ALA	3.5
1	B	35	ASP	3.4
1	B	267	SER	3.4
1	B	361	THR	3.3
1	A	35	ASP	3.2
1	B	266	ALA	3.0
1	A	266	ALA	2.9
1	A	263	GLU	2.8
1	B	319	ARG	2.7
1	A	101	VAL	2.5
1	B	118	ARG	2.5
1	A	106	CYS	2.1
1	B	170	VAL	2.1
1	B	293	MET	2.1

## 6.2 Non-standard residues in protein, DNA, RNA chains ⓘ

In the following table, the Atoms column lists the number of modelled atoms in the group and the number defined in the chemical component dictionary. LLDF column lists the quality of electron density of the group with respect to its neighbouring residues in protein, DNA or RNA chains. The B-factors column lists the minimum, median, 95<sup>th</sup> percentile and maximum values of B factors of atoms in the group. The column labelled 'Q< 0.9' lists the number of atoms with occupancy less than 0.9.

Mol	Type	Chain	Res	Atoms	RSR	LLDF	B-factors(Å <sup>2</sup> )	Q<0.9
1	KCX	B	169	12/13	0.17	0.22	27,31,40,43	0
1	KCX	A	169	12/13	0.17	0.05	25,28,34,35	0

## 6.3 Carbohydrates ⓘ

There are no carbohydrates in this entry.

## 6.4 Ligands ⓘ

In the following table, the Atoms column lists the number of modelled atoms in the group and the number defined in the chemical component dictionary. LLDF column lists the quality of electron density of the group with respect to its neighbouring residues in protein, DNA or RNA chains. The B-factors column lists the minimum, median, 95<sup>th</sup> percentile and maximum values of B factors of atoms in the group. The column labelled 'Q< 0.9' lists the number of atoms with occupancy less than 0.9.

Mol	Type	Chain	Res	Atoms	RSR	LLDF	B-factors(Å <sup>2</sup> )	Q<0.9
4	IMD	B	905	5/5	0.28	6.58	62,62,62,62	0
4	IMD	A	906	5/5	0.24	5.62	52,53,54,54	0
4	IMD	A	904	5/5	0.25	5.16	40,43,44,45	0
3	QMP	B	901	11/11	0.22	3.13	72,72,75,75	0
3	QMP	A	902	11/11	0.24	2.72	62,64,69,69	0
4	IMD	A	903	5/5	0.18	1.09	45,47,48,48	0
2	CO	A	802	1/1	0.10	-1.51	33,33,33,33	0
2	CO	B	803	1/1	0.06	-2.87	37,37,37,37	0
2	CO	B	804	1/1	0.04	-5.63	47,47,47,47	0
2	CO	A	801	1/1	0.03	-5.98	35,35,35,35	0

## 6.5 Other polymers ⓘ

There are no such residues in this entry.