



Full wwPDB X-ray Structure Validation Report ⓘ

Feb 28, 2014 – 03:40 AM GMT

PDB ID : 2UX3
Title : X-RAY HIGH RESOLUTION STRUCTURE OF THE PHOTOSYNTHETIC
REACTION CENTER FROM RB. SPHAEROIDES AT PH 9 IN THE NEU-
TRAL STATE
Authors : Koepke, J.; Diehm, R.; Fritzsche, G.
Deposited on : 2007-03-26
Resolution : 2.50 Å(reported)

This is a full wwPDB validation report for a publicly released PDB entry.
We welcome your comments at validation@mail.wwpdb.org
A user guide is available at <http://wwpdb.org/ValidationPDFNotes.html>

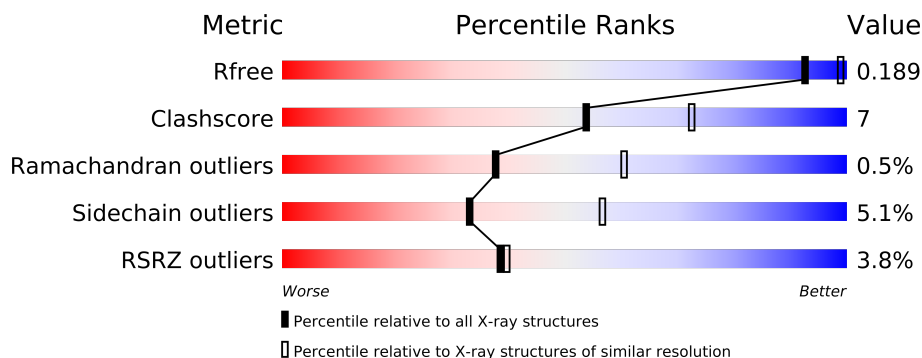
The following versions of software and data (see [references](#)) were used in the production of this report:

MolProbity : 4.02b-467
Mogul : 1.15 2013
Xtriage (Phenix) : dev-1323
EDS : stable22639
Percentile statistics : 21963
Refmac : 5.8.0049
CCP4 : 6.3.0 (Settle)
Ideal geometry (proteins) : Engh & Huber (2001)
Ideal geometry (DNA, RNA) : Parkinson et. al. (1996)
Validation Pipeline (wwPDB-VP) : stable22683

1 Overall quality at a glance

The reported resolution of this entry is 2.50 Å.

Percentile scores (ranging between 0-100) for global validation metrics of the entry are shown in the following graphic. The table shows the number of entries on which the scores are based.



Metric	Whole archive (#Entries)	Similar resolution (#Entries, resolution range(Å))
R_{free}	66092	2784 (2.50-2.50)
Clashscore	79885	3562 (2.50-2.50)
Ramachandran outliers	78287	3480 (2.50-2.50)
Sidechain outliers	78261	3482 (2.50-2.50)
RSRZ outliers	66119	2785 (2.50-2.50)

The table below summarises the geometric issues observed across the polymeric chains and their fit to the electron density. The red, orange, yellow and green segments on the lower bar indicate the fraction of residues that contain outliers for ≥ 3 , 2, 1 and 0 types of geometric quality criteria. The upper red bar (where present) indicates the fraction of residues that have poor fit to the electron density.

Mol	Chain	Length	Quality of chain
1	H	260	
2	L	281	
3	M	307	

The following table lists non-polymeric compounds that are outliers for geometric or electron-density-fit criteria:

Mol	Type	Chain	Res	Geometry	Electron density
10	HTO	L	1288	-	X
13	SPO	M	1315	-	X
14	CDL	M	1316	-	X
4	GOL	H	1251	-	X
4	GOL	H	1252	-	X

Continued on next page...

Continued from previous page...

Mol	Type	Chain	Res	Geometry	Electron density
4	GOL	H	1253	-	X
4	GOL	L	1290	-	X
6	LDA	L	1283	-	X
6	LDA	L	1711	-	X
6	LDA	M	1305	-	X
6	LDA	M	1306	-	X
6	LDA	M	1308	-	X
6	LDA	M	1309	-	X
6	LDA	M	1310	-	X
6	LDA	M	1311	-	X
8	UQ2	L	1285[A]	-	X
8	UQ2	L	1285[B]	-	X

2 Entry composition

There are 15 unique types of molecules in this entry. The entry contains 7606 atoms, of which 0 are hydrogen and 0 are deuterium.

In the tables below, the ZeroOcc column contains the number of atoms modelled with zero occupancy, the AltConf column contains the number of residues with at least one atom in alternate conformation and the Trace column contains the number of residues modelled with at most 2 atoms.

- Molecule 1 is a protein called REACTION CENTER PROTEIN H CHAIN.

Mol	Chain	Residues	Atoms					ZeroOcc	AltConf	Trace
1	H	241	Total	C	N	O	S	0	3	1
			1846	1181	319	337	9			

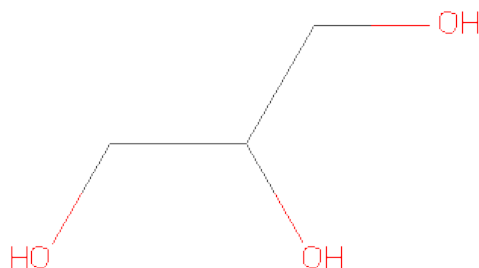
- Molecule 2 is a protein called REACTION CENTER PROTEIN L CHAIN.

Mol	Chain	Residues	Atoms					ZeroOcc	AltConf	Trace
2	L	281	Total	C	N	O	S	0	0	0
			2232	1507	355	362	8			

- Molecule 3 is a protein called REACTION CENTER PROTEIN M CHAIN.

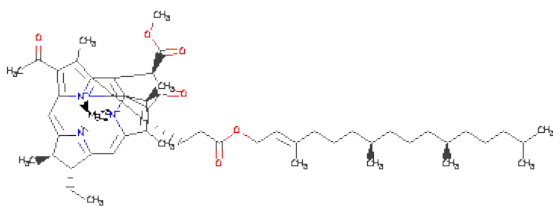
Mol	Chain	Residues	Atoms					ZeroOcc	AltConf	Trace
3	M	303	Total	C	N	O	S	0	1	1
			2419	1616	396	397	10			

- Molecule 4 is GLYCEROL (three-letter code: GOL) (formula: C₃H₈O₃).



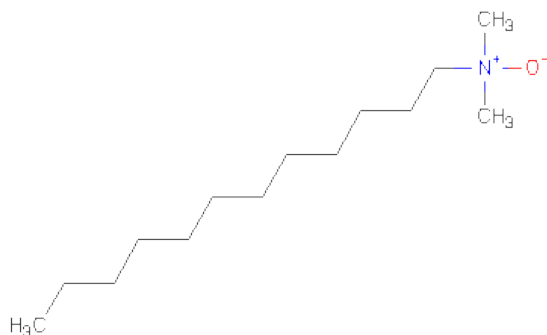
Mol	Chain	Residues	Atoms			ZeroOcc	AltConf
4	H	1	Total	C	O	0	0
			6	3	3		
4	H	1	Total	C	O	0	0
			6	3	3		
4	H	1	Total	C	O	0	0
			6	3	3		
4	H	1	Total	C	O	0	0
			6	3	3		
4	L	1	Total	C	O	0	0
			6	3	3		
4	L	1	Total	C	O	0	0
			6	3	3		

- Molecule 5 is BACTERIOCHLOROPHYLL A (three-letter code: BCL) (formula: $C_{55}H_{74}MgN_4O_6$).



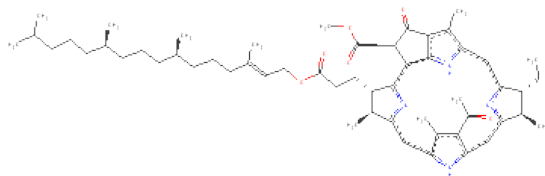
Mol	Chain	Residues	Atoms					ZeroOcc	AltConf
5	L	1	Total	C	Mg	N	O	0	0
			66	55	1	4	6		
5	L	1	Total	C	Mg	N	O	0	0
			66	55	1	4	6		
5	M	1	Total	C	Mg	N	O	0	0
			66	55	1	4	6		
5	M	1	Total	C	Mg	N	O	0	0
			66	55	1	4	6		

- Molecule 6 is LAURYL DIMETHYLAMINE-N-OXIDE (three-letter code: LDA) (formula: $C_{14}H_{31}NO$).



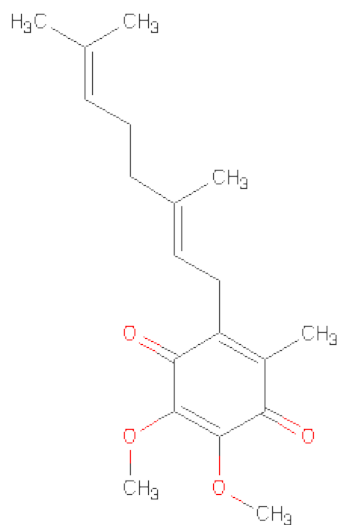
Mol	Chain	Residues	Atoms				ZeroOcc	AltConf
6	L	1	Total	C	N	O	0	0
			16	14	1	1		
6	L	1	Total	C	N	O	0	0
			16	14	1	1		
6	M	1	Total	C	N	O	0	0
			16	14	1	1		
6	M	1	Total	C	N	O	0	0
			16	14	1	1		
6	M	1	Total	C	N	O	0	0
			16	14	1	1		
6	M	1	Total	C	N	O	0	0
			16	14	1	1		
6	M	1	Total	C	N	O	0	0
			16	14	1	1		
6	M	1	Total	C	N	O	0	0
			16	14	1	1		

- Molecule 7 is BACTERIOPHEOPHYTIN A (three-letter code: BPH) (formula: C₅₅H₇₆N₄O₆).



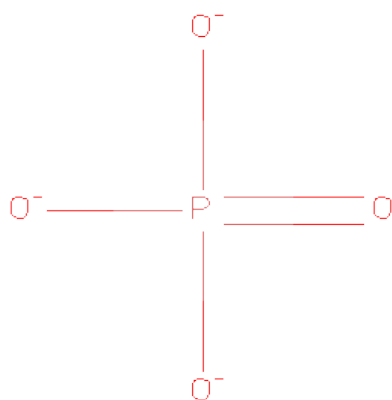
Mol	Chain	Residues	Atoms				ZeroOcc	AltConf
7	L	1	Total	C	N	O	0	0
			65	55	4	6		
7	M	1	Total	C	N	O	0	0
			65	55	4	6		

- Molecule 8 is UBIQUINONE-2 (three-letter code: UQ2) (formula: $C_{19}H_{26}O_4$).



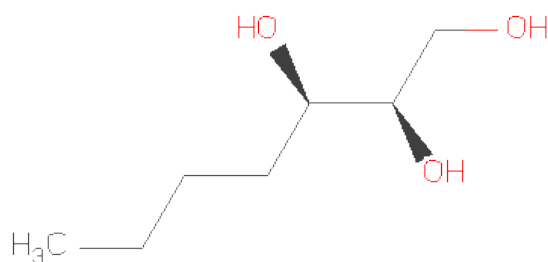
Mol	Chain	Residues	Atoms			ZeroOcc	AltConf
8	L	1	Total	C	O	0	1
			46	38	8		

- Molecule 9 is PHOSPHATE ION (three-letter code: PO4) (formula: O_4P).



Mol	Chain	Residues	Atoms			ZeroOcc	AltConf
9	L	1	Total	O	P	0	0
			5	4	1		

- Molecule 10 is HEPTANE-1,2,3-TRIOL (three-letter code: HTO) (formula: C₇H₁₆O₃).

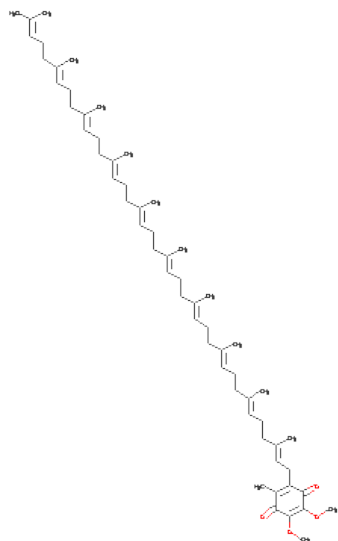


Mol	Chain	Residues	Atoms			ZeroOcc	AltConf
10	L	1	Total	C	O	0	0
			10	7	3		

- Molecule 11 is FE (III) ION (three-letter code: FE) (formula: Fe).

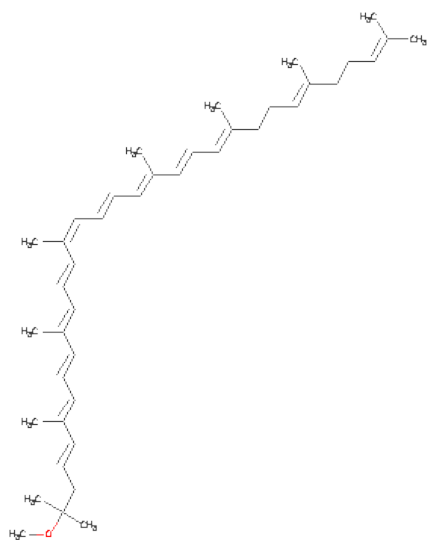
Mol	Chain	Residues	Atoms		ZeroOcc	AltConf
11	M	1	Total	Fe	0	0
			1	1		

- Molecule 12 is UBIQUINONE-10 (three-letter code: U10) (formula: $C_{59}H_{90}O_4$).



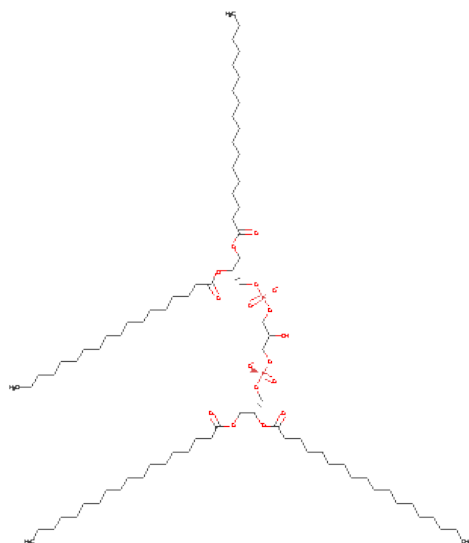
Mol	Chain	Residues	Atoms			ZeroOcc	AltConf
12	M	1	Total	C	O	0	0
			48	44	4		

- Molecule 13 is SPHEROIDENE (three-letter code: SPO) (formula: $C_{41}H_{60}O$).



Mol	Chain	Residues	Atoms			ZeroOcc	AltConf
13	M	1	Total	C	O	0	0
			42	41	1		

- Molecule 14 is CARDIOLIPIN (three-letter code: CDL) (formula: $C_{81}H_{156}O_{17}P_2$).



Mol	Chain	Residues	Atoms				ZeroOcc	AltConf
14	M	1	Total	C	O	P	0	0
			81	62	17	2		

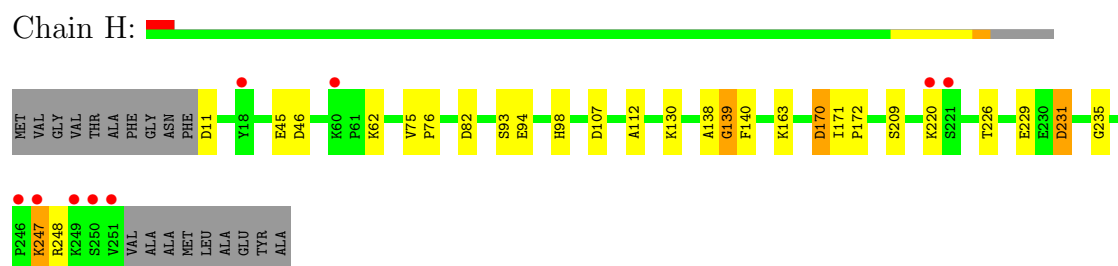
- Molecule 15 is water.

Mol	Chain	Residues	Atoms		ZeroOcc	AltConf
15	H	114	Total	O	0	0
			114	114		
15	L	92	Total	O	0	0
			92	92		
15	M	96	Total	O	0	0
			96	96		

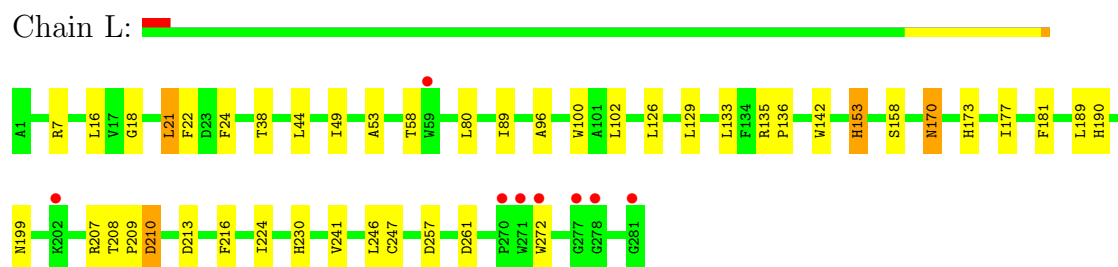
3 Residue-property plots

These plots are drawn for all protein, RNA and DNA chains in the entry. The first graphic for a chain summarises the proportions of errors displayed in the second graphic. The second graphic shows the sequence view annotated by issues in geometry and electron density. Residues are color-coded according to the number of geometric quality criteria for which they contain at least one outlier: green = 0, yellow = 1, orange = 2 and red = 3 or more. A red dot above a residue indicates a poor fit to the electron density ($RSRZ > 2$). Stretches of 2 or more consecutive residues without any outlier are shown as a green connector. Residues present in the sample, but not in the model, are shown in grey.

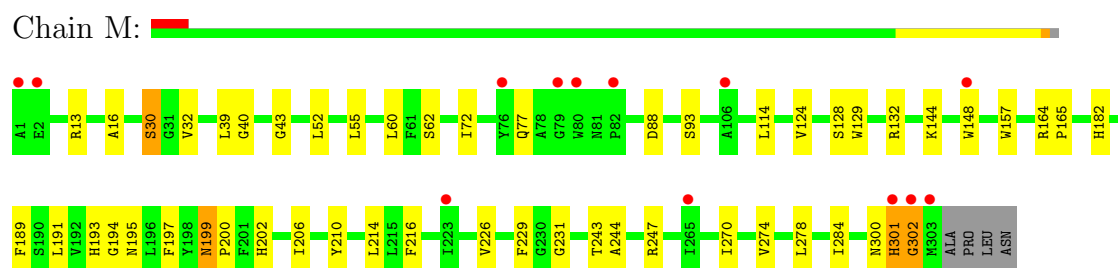
• Molecule 1: REACTION CENTER PROTEIN H CHAIN



• Molecule 2: REACTION CENTER PROTEIN L CHAIN



• Molecule 3: REACTION CENTER PROTEIN M CHAIN



4 Data and refinement statistics

Property	Value	Source
Space group	P 31 2 1	Depositor
Cell constants a, b, c, α , β , γ	139.45Å 139.45Å 184.58Å 90.00° 90.00° 120.00°	Depositor
Resolution (Å)	119.52 – 2.50 36.90 – 2.50	Depositor EDS
% Data completeness (in resolution range)	92.1 (119.52-2.50) 86.6 (36.90-2.50)	Depositor EDS
R_{merge}	0.04	Depositor
R_{sym}	(Not available)	Depositor
$\langle I/\sigma(I) \rangle$ ¹	2.79 (at 2.51Å)	Xtriage
Refinement program	REFMAC 5.1.24	Depositor
R, R_{free}	0.185 , 0.221 0.182 , 0.189	Depositor DCC
R_{free} test set	1904 reflections (3.14%)	DCC
Wilson B-factor (Å ²)	44.7	Xtriage
Anisotropy	0.190	Xtriage
Bulk solvent k_{sol} (e/Å ³), B_{sol} (Å ²)	0.35 , 48.6	EDS
Estimated twinning fraction	0.021 for -h,-k,l	Xtriage
L-test for twinning	$\langle L \rangle = 0.48$, $\langle L^2 \rangle = 0.32$	Xtriage
Outliers	0 of 66473 reflections	Xtriage
F_o, F_c correlation	0.95	EDS
Total number of atoms	7606	wwPDB-VP
Average B, all atoms (Å ²)	51.0	wwPDB-VP

Xtriage's analysis on translational NCS is as follows: *The largest off-origin peak in the Patterson function is 2.99% of the height of the origin peak. No significant pseudotranslation is detected.*

¹Intensities estimated from amplitudes.

5 Model quality

5.1 Standard geometry

Bond lengths and bond angles in the following residue types are not validated in this section: BCL, GOL, LDA, CDL, BPH, PO4, HTO, FE, SPO, U10, UQ2

The Z score for a bond length (or angle) is the number of standard deviations the observed value is removed from the expected value. A bond length (or angle) with $|Z| > 5$ is considered an outlier worth inspection. RMSZ is the root-mean-square of all Z scores of the bond lengths (or angles).

Mol	Chain	Bond lengths		Bond angles	
		RMSZ	$\# Z > 5$	RMSZ	$\# Z > 5$
1	H	0.63	0/1906	0.78	7/2591 (0.3%)
2	L	0.66	0/2320	0.68	4/3175 (0.1%)
3	M	0.61	0/2517	0.68	2/3438 (0.1%)
All	All	0.63	0/6743	0.71	13/9204 (0.1%)

Chiral center outliers are detected by calculating the chiral volume of a chiral center and verifying if the center is modelled as a planar moiety or with the opposite hand. A planarity outlier is detected by checking planarity of atoms in a peptide group, atoms in a mainchain group or atoms of a sidechain that are expected to be planar.

Mol	Chain	#Chirality outliers	#Planarity outliers
3	M	0	1

There are no bond length outliers.

All (13) bond angle outliers are listed below:

Mol	Chain	Res	Type	Atoms	Z	Observed(°)	Ideal(°)
1	H	82	ASP	CB-CG-OD2	7.62	125.16	118.30
1	H	11	ASP	CB-CG-OD2	7.00	124.60	118.30
2	L	213	ASP	CB-CG-OD2	6.80	124.42	118.30
1	H	139	GLY	N-CA-C	-5.99	98.13	113.10
2	L	210	ASP	CB-CG-OD1	5.96	123.67	118.30
1	H	231	ASP	CB-CG-OD2	5.63	123.36	118.30
3	M	88	ASP	CB-CG-OD2	5.47	123.23	118.30
2	L	257	ASP	CB-CG-OD2	5.43	123.19	118.30
1	H	107	ASP	CB-CG-OD2	5.38	123.14	118.30
2	L	261	ASP	CB-CG-OD2	5.14	122.92	118.30
1	H	170	ASP	CB-CG-OD2	5.13	122.92	118.30
1	H	46	ASP	CB-CG-OD2	5.09	122.88	118.30
3	M	302	GLY	O-C-N	-5.00	114.70	122.70

There are no chirality outliers.

All (1) planarity outliers are listed below:

Mol	Chain	Res	Type	Group
3	M	300	ASN	Peptide

5.2 Close contacts ⓘ

In the following table, the Non-H and H(model) columns list the number of non-hydrogen atoms and hydrogen atoms in the chain respectively. The H(added) column lists the number of hydrogens added by MolProbity. The Clashes column lists the number of clashes within the asymmetric unit, and the number in parentheses is this value normalized per 1000 atoms of the molecule in the chain. The Symm-Clashes column gives symmetry related clashes, in the same way as for the Clashes column.

Mol	Chain	Non-H	H(model)	H(added)	Clashes	Symm-Clashes
1	H	1846	0	1861	13	0
2	L	2232	0	2187	28	0
3	M	2419	0	2327	28	0
4	H	24	0	32	1	0
4	L	12	0	16	1	0
5	L	132	0	148	8	0
5	M	132	0	148	18	0
6	L	32	0	62	2	0
6	M	112	0	217	2	0
7	L	65	0	76	9	0
7	M	65	0	76	14	0
8	L	46	0	52	8	0
9	L	5	0	0	0	0
10	L	10	0	16	2	0
11	M	1	0	0	0	0
12	M	48	0	63	2	0
13	M	42	0	60	3	0
14	M	81	0	82	3	0
15	H	114	0	0	0	1
15	L	92	0	0	0	0
15	M	96	0	0	0	0
All	All	7606	0	7423	101	1

Clashscore is defined as the number of clashes calculated for the entry per 1000 atoms (including hydrogens) of the entry. The overall clashscore for this entry is 7.

All (101) close contacts within the same asymmetric unit are listed below.

Atom-1	Atom-2	Distance(Å)	Clash(Å)
2:L:224:ILE:HG22	8:L:1285[A]:UQ2:H8	1.61	0.83
8:L:1285[A]:UQ2:H161	6:L:1711:LDA:H121	1.62	0.81
3:M:197:PHE:HZ	5:M:1304:BCL:HBB2	1.46	0.79
2:L:181:PHE:CD2	7:M:1313:BPH:HBB1	2.18	0.78
3:M:197:PHE:CZ	5:M:1304:BCL:HBB2	2.18	0.78
1:H:62:LYS:HE3	4:H:1251:GOL:H11	1.64	0.78
5:M:1303:BCL:H62	7:M:1313:BPH:HMB1	1.66	0.78
3:M:16:ALA:HB1	3:M:32:VAL:HG11	1.66	0.75
7:L:1284:BPH:HBB2	3:M:210:TYR:HB3	1.75	0.69
7:L:1284:BPH:HHC	7:L:1284:BPH:CBB	2.22	0.69
2:L:181:PHE:HB3	7:M:1313:BPH:HBB2	1.74	0.69
7:L:1284:BPH:HBB3	7:L:1284:BPH:HHC	1.76	0.66
7:M:1313:BPH:HHC	7:M:1313:BPH:HBB3	1.76	0.65
3:M:157:TRP:HB2	5:M:1304:BCL:H71	1.78	0.65
3:M:144:LYS:N	14:M:1316:CDL:OB3	2.26	0.65
2:L:170:ASN:C	2:L:170:ASN:HD22	2.01	0.64
3:M:77:GLN:HE22	3:M:93:SER:H	1.44	0.63
5:M:1303:BCL:HBB3	5:M:1304:BCL:H41	1.79	0.62
7:M:1313:BPH:HBC2	7:M:1313:BPH:HHD	1.80	0.62
2:L:199:ASN:HA	4:L:1289:GOL:H31	1.82	0.61
2:L:199:ASN:O	14:M:1316:CDL:HB22	2.00	0.60
5:M:1303:BCL:H62	7:M:1313:BPH:CMB	2.32	0.59
2:L:181:PHE:HB3	7:M:1313:BPH:CBB	2.33	0.59
1:H:140:PHE:HA	3:M:13:ARG:O	2.03	0.58
2:L:190:HIS:HA	8:L:1285[A]:UQ2:O4	2.04	0.58
5:M:1303:BCL:CBB	13:M:1315:SPO:H243	2.34	0.57
3:M:197:PHE:CE1	5:M:1304:BCL:HHC	2.40	0.57
8:L:1285[A]:UQ2:C16	6:L:1711:LDA:H121	2.34	0.56
6:M:1308:LDA:H71	12:M:1314:U10:H23	1.88	0.56
3:M:199:ASN:HD22	3:M:199:ASN:C	2.09	0.55
5:M:1304:BCL:HBB2	5:M:1304:BCL:HHC	1.90	0.54
3:M:62:SER:OG	3:M:124:VAL:HG22	2.07	0.54
3:M:189:PHE:O	3:M:193:HIS:HD2	1.90	0.53
5:M:1303:BCL:HBB2	13:M:1315:SPO:H243	1.90	0.52
5:L:1286:BCL:HMB1	5:L:1286:BCL:CBB	2.40	0.52
3:M:194:GLY:O	3:M:195:ASN:HB3	2.10	0.51
7:L:1284:BPH:HBB1	3:M:210:TYR:CD2	2.46	0.51
7:M:1313:BPH:HHC	7:M:1313:BPH:CBB	2.38	0.51
7:L:1284:BPH:CHC	7:L:1284:BPH:HBB3	2.40	0.51
5:M:1304:BCL:HAA2	5:M:1304:BCL:HBD	1.93	0.51
2:L:135:ARG:HB3	2:L:136:PRO:HD3	1.94	0.49
5:M:1304:BCL:CBB	5:M:1304:BCL:CHC	2.90	0.49
3:M:55:LEU:HD22	3:M:128:SER:HB2	1.95	0.48

Continued on next page...

Continued from previous page...

Atom-1	Atom-2	Distance(Å)	Clash(Å)
5:L:1282:BCL:HBB3	5:L:1286:BCL:H52	1.95	0.47
2:L:133:LEU:HD13	10:L:1288:HTO:H62	1.95	0.47
8:L:1285[B]:UQ2:H8	8:L:1285[B]:UQ2:H5M1	1.96	0.47
7:L:1284:BPH:CHC	7:L:1284:BPH:CBB	2.91	0.47
3:M:243:THR:O	3:M:247:ARG:HG3	2.14	0.47
1:H:98:HIS:CD2	2:L:7:ARG:HH21	2.32	0.47
1:H:75:VAL:HA	1:H:76:PRO:C	2.36	0.47
2:L:224:ILE:CG2	8:L:1285[A]:UQ2:H8	2.40	0.46
3:M:164:ARG:HB3	3:M:165:PRO:HD3	1.98	0.46
7:M:1313:BPH:CHD	7:M:1313:BPH:HBC2	2.44	0.46
3:M:284:ILE:HG12	5:M:1304:BCL:HED3	1.97	0.46
1:H:209:SER:OG	1:H:247:LYS:HD3	2.16	0.46
3:M:229:PHE:HB2	3:M:244:ALA:HB2	1.98	0.46
2:L:38:THR:HG21	2:L:100:TRP:HE3	1.80	0.45
2:L:22:PHE:HA	2:L:24:PHE:CE2	2.52	0.45
3:M:129:TRP:O	3:M:132:ARG:HB3	2.16	0.45
6:M:1307:LDA:H112	12:M:1314:U10:H202	1.98	0.45
2:L:49:ILE:HG13	2:L:89:ILE:HD13	1.98	0.45
5:M:1304:BCL:CBB	5:M:1304:BCL:HHC	2.47	0.45
2:L:189:LEU:CD2	7:M:1313:BPH:HMD2	2.47	0.45
1:H:226:THR:OG1	1:H:229:GLU:HG3	2.17	0.45
1:H:45:GLU:HG3	1:H:94:GLU:OE1	2.16	0.45
5:L:1282:BCL:HHC	5:L:1282:BCL:HBB2	1.98	0.44
8:L:1285[A]:UQ2:H5M1	8:L:1285[A]:UQ2:H71	1.64	0.44
7:M:1313:BPH:HBB3	7:M:1313:BPH:CHC	2.47	0.44
2:L:96:ALA:HB1	7:L:1284:BPH:H2	2.00	0.44
2:L:241:VAL:HG21	7:L:1284:BPH:HBC3	2.00	0.44
5:M:1303:BCL:HBB1	13:M:1315:SPO:H243	2.00	0.43
1:H:98:HIS:HD2	2:L:7:ARG:HH21	1.67	0.43
1:H:171:ILE:N	1:H:172:PRO:HD2	2.33	0.43
5:L:1282:BCL:H161	5:L:1282:BCL:H122	1.64	0.43
5:M:1304:BCL:H61	7:M:1313:BPH:C4B	2.49	0.43
5:M:1303:BCL:H13	5:M:1303:BCL:H102	1.82	0.43
7:L:1284:BPH:ND	3:M:214:LEU:HD13	2.34	0.43
3:M:189:PHE:O	3:M:193:HIS:CD2	2.71	0.42
1:H:112:ALA:HA	1:H:235:GLY:O	2.19	0.42
2:L:190:HIS:CE1	2:L:230:HIS:CE1	3.07	0.42
1:H:138:ALA:HA	1:H:139:GLY:HA2	1.82	0.42
2:L:173:HIS:CE1	2:L:177:ILE:HD11	2.55	0.42
2:L:189:LEU:HD23	7:M:1313:BPH:HMD2	2.02	0.42
7:M:1313:BPH:H142	7:M:1313:BPH:H111	1.95	0.42
3:M:199:ASN:HD22	3:M:200:PRO:N	2.18	0.42

Continued on next page...

Continued from previous page...

Atom-1	Atom-2	Distance(Å)	Clash(Å)
1:H:98:HIS:CD2	2:L:7:ARG:HE	2.37	0.42
3:M:40:GLY:HA2	3:M:43:GLY:O	2.20	0.42
1:H:130:LYS:HE3	1:H:170:ASP:OD2	2.19	0.42
8:L:1285[B]:UQ2:C8	8:L:1285[B]:UQ2:H5M1	2.50	0.41
3:M:202:HIS:CE1	3:M:206:ILE:HD11	2.55	0.41
2:L:53:ALA:HB1	2:L:58:THR:O	2.19	0.41
3:M:148[B]:TRP:CD1	14:M:1316:CDL:HB62	2.56	0.41
5:L:1282:BCL:O1A	5:L:1282:BCL:H43	2.21	0.41
3:M:226:VAL:HG23	3:M:231:GLY:HA3	2.03	0.41
5:L:1286:BCL:C1C	5:M:1304:BCL:HBB3	2.51	0.41
2:L:142:TRP:CZ2	10:L:1288:HTO:H3	2.54	0.41
3:M:270:ILE:O	3:M:274:VAL:HG13	2.21	0.41
2:L:18:GLY:O	2:L:21:LEU:HB2	2.20	0.40
2:L:153:HIS:CD2	5:L:1282:BCL:NC	2.89	0.40
2:L:208:THR:HB	2:L:209:PRO:HD2	2.04	0.40
5:L:1286:BCL:HBB3	5:L:1286:BCL:HMB1	2.03	0.40

All (1) symmetry-related close contacts are listed below. The label for Atom-2 includes the symmetry operator and encoded unit-cell translations to be applied.

Atom-1	Atom-2	Distance(Å)	Clash(Å)
15:H:2033:HOH:O	15:H:2033:HOH:O[4_555]	2.10	0.10

5.3 Torsion angles

5.3.1 Protein backbone ⓘ

In the following table, the Percentiles column shows the percent Ramachandran outliers of the chain as a percentile score with respect to all X-ray entries followed by that with respect to entries of similar resolution. The Analysed column shows the number of residues for which the backbone conformation was analysed, and the total number of residues.

Mol	Chain	Analysed	Favoured	Allowed	Outliers	Percentiles	
1	H	242/260 (93%)	234 (97%)	7 (3%)	1 (0%)	43	66
2	L	279/281 (99%)	270 (97%)	9 (3%)	0	100	100
3	M	302/307 (98%)	286 (95%)	13 (4%)	3 (1%)	22	38
All	All	823/848 (97%)	790 (96%)	29 (4%)	4 (0%)	38	60

All (4) Ramachandran outliers are listed below:

Mol	Chain	Res	Type
3	M	301	HIS
1	H	248	ARG
3	M	30	SER
3	M	302	GLY

5.3.2 Protein sidechains ⓘ

In the following table, the Percentiles column shows the percent sidechain outliers of the chain as a percentile score with respect to all X-ray entries followed by that with respect to entries of similar resolution. The Analysed column shows the number of residues for which the sidechain conformation was analysed, and the total number of residues.

Mol	Chain	Analysed	Rotameric	Outliers	Percentiles	
1	H	198/208 (95%)	192 (97%)	6 (3%)	53	80
2	L	220/220 (100%)	204 (93%)	16 (7%)	20	36
3	M	237/240 (99%)	225 (95%)	12 (5%)	33	57
All	All	655/668 (98%)	621 (95%)	34 (5%)	33	55

All (34) residues with a non-rotameric sidechain are listed below:

Mol	Chain	Res	Type
1	H	93	SER
1	H	163	LYS
1	H	220[A]	LYS
1	H	220[B]	LYS
1	H	231	ASP
1	H	247	LYS
2	L	16	LEU
2	L	21	LEU
2	L	44	LEU
2	L	80	LEU
2	L	102	LEU
2	L	126	LEU
2	L	129	LEU
2	L	153	HIS
2	L	158	SER
2	L	170	ASN
2	L	207	ARG
2	L	210	ASP
2	L	216	PHE
2	L	246	LEU

Continued on next page...

Continued from previous page...

Mol	Chain	Res	Type
2	L	247	CYS
2	L	272	TRP
3	M	30	SER
3	M	39	LEU
3	M	52	LEU
3	M	60	LEU
3	M	72	ILE
3	M	114	LEU
3	M	182	HIS
3	M	191	LEU
3	M	199	ASN
3	M	216	PHE
3	M	278	LEU
3	M	301	HIS

Some sidechains can be flipped to improve hydrogen bonding and reduce clashes. All (8) such sidechains are listed below:

Mol	Chain	Res	Type
1	H	98	HIS
2	L	159	ASN
2	L	170	ASN
2	L	183	ASN
3	M	77	GLN
3	M	187	ASN
3	M	193	HIS
3	M	199	ASN

5.3.3 RNA ⓘ

There are no RNA chains in this entry.

5.4 Non-standard residues in protein, DNA, RNA chains ⓘ

There are no non-standard protein/DNA/RNA residues in this entry.

5.5 Carbohydrates ⓘ

There are no carbohydrates in this entry.

5.6 Ligand geometry ⓘ

Of 29 ligands modelled in this entry, 1 is monoatomic - leaving 28 for Mogul analysis.

In the following table, the Counts columns list the number of bonds (or angles) for which Mogul statistics could be retrieved, the number of bonds (or angles) that are observed in the model and the number of bonds (or angles) that are defined in the chemical component dictionary. The Link column lists molecule types, if any, to which the group is linked. The Z score for a bond length (or angle) is the number of standard deviations the observed value is removed from the expected value. A bond length (or angle) with $|Z| > 2$ is considered an outlier worth inspection. RMSZ is the root-mean-square of all Z scores of the bond lengths (or angles).

Mol	Type	Chain	Res	Link	Bond lengths			Bond angles		
					Counts	RMSZ	# $ Z > 2$	Counts	RMSZ	# $ Z > 2$
4	GOL	H	1251	-	5,5,5	0.49	0	5,5,5	0.69	0
4	GOL	H	1252	-	5,5,5	0.35	0	5,5,5	0.40	0
4	GOL	H	1253	-	5,5,5	0.30	0	5,5,5	0.40	0
4	GOL	H	1254	-	5,5,5	0.31	0	5,5,5	0.31	0
5	BCL	L	1282	2	74,74,74	2.12	11 (14%)	97,115,115	2.03	27 (27%)
6	LDA	L	1283	-	15,15,15	3.76	1 (6%)	17,17,17	0.69	0
7	BPH	L	1284	-	70,70,70	2.89	14 (20%)	94,101,101	1.70	16 (17%)
8	UQ2	L	1285[A]	-	23,23,23	2.64	6 (26%)	31,31,31	1.70	6 (19%)
8	UQ2	L	1285[B]	-	23,23,23	2.73	7 (30%)	31,31,31	1.21	3 (9%)
5	BCL	L	1286	2	74,74,74	2.11	11 (14%)	97,115,115	2.07	26 (26%)
9	PO4	L	1287	-	4,4,4	0.27	0	6,6,6	0.31	0
10	HTO	L	1288	-	9,9,9	0.41	0	10,10,10	0.80	0
4	GOL	L	1289	-	5,5,5	0.31	0	5,5,5	0.41	0
4	GOL	L	1290	-	5,5,5	0.32	0	5,5,5	0.35	0
6	LDA	L	1711	-	15,15,15	3.94	2 (13%)	17,17,17	0.87	0
5	BCL	M	1303	3	74,74,74	2.11	11 (14%)	97,115,115	2.02	25 (25%)
5	BCL	M	1304	3	74,74,74	2.07	12 (16%)	97,115,115	1.85	21 (21%)
6	LDA	M	1305	-	15,15,15	3.69	1 (6%)	17,17,17	0.99	2 (11%)
6	LDA	M	1306	-	15,15,15	3.70	2 (13%)	17,17,17	0.65	0
6	LDA	M	1307	-	15,15,15	3.76	2 (13%)	17,17,17	1.09	1 (5%)
6	LDA	M	1308	-	15,15,15	3.78	2 (13%)	17,17,17	0.70	0
6	LDA	M	1309	-	15,15,15	3.84	2 (13%)	17,17,17	0.60	0
6	LDA	M	1310	-	15,15,15	3.77	2 (13%)	17,17,17	0.73	0
6	LDA	M	1311	-	15,15,15	3.74	2 (13%)	17,17,17	0.67	0
7	BPH	M	1313	-	70,70,70	3.05	18 (25%)	94,101,101	1.84	18 (19%)
12	U10	M	1314	-	48,48,63	3.09	13 (27%)	59,61,79	1.71	15 (25%)
13	SPO	M	1315	-	41,41,41	4.11	12 (29%)	50,50,50	2.16	13 (26%)

Mol	Type	Chain	Res	Link	Bond lengths			Bond angles		
					Counts	RMSZ	# Z > 2	Counts	RMSZ	# Z > 2
14	CDL	M	1316	-	80,80,99	2.81	22 (27%)	92,92,111	3.51	14 (15%)

In the following table, the Chirals column lists the number of chiral outliers, the number of chiral centers analysed, the number of these observed in the model and the number defined in the chemical component dictionary. Similar counts are reported in the Torsion and Rings columns. '-' means no outliers of that kind were identified.

Mol	Type	Chain	Res	Link	Chirals	Torsions	Rings
4	GOL	H	1251	-	-	0/4/4/4	0/0/0/0
4	GOL	H	1252	-	-	0/4/4/4	0/0/0/0
4	GOL	H	1253	-	-	0/4/4/4	0/0/0/0
4	GOL	H	1254	-	-	0/4/4/4	0/0/0/0
5	BCL	L	1282	2	2/2/21/25	0/41/137/137	0/0/9/9
6	LDA	L	1283	-	-	0/13/13/13	0/0/0/0
7	BPH	L	1284	-	2/2/18/22	0/49/105/105	0/0/6/6
8	UQ2	L	1285[A]	-	-	0/15/39/39	0/1/1/1
8	UQ2	L	1285[B]	-	-	0/15/39/39	0/1/1/1
5	BCL	L	1286	2	2/2/21/25	0/41/137/137	0/0/9/9
9	PO4	L	1287	-	-	0/0/0/0	0/0/0/0
10	HTO	L	1288	-	-	0/10/10/10	0/0/0/0
4	GOL	L	1289	-	-	0/4/4/4	0/0/0/0
4	GOL	L	1290	-	-	0/4/4/4	0/0/0/0
6	LDA	L	1711	-	-	0/13/13/13	0/0/0/0
5	BCL	M	1303	3	2/2/21/25	0/41/137/137	0/0/9/9
5	BCL	M	1304	3	2/2/21/25	0/41/137/137	0/0/9/9
6	LDA	M	1305	-	-	0/13/13/13	0/0/0/0
6	LDA	M	1306	-	-	0/13/13/13	0/0/0/0
6	LDA	M	1307	-	-	0/13/13/13	0/0/0/0
6	LDA	M	1308	-	-	0/13/13/13	0/0/0/0
6	LDA	M	1309	-	-	0/13/13/13	0/0/0/0
6	LDA	M	1310	-	-	0/13/13/13	0/0/0/0
6	LDA	M	1311	-	-	0/13/13/13	0/0/0/0
7	BPH	M	1313	-	2/2/18/22	0/49/105/105	0/0/6/6
12	U10	M	1314	-	-	0/45/69/87	0/1/1/1
13	SPO	M	1315	-	-	0/47/47/47	0/0/0/0
14	CDL	M	1316	-	1/1/9/9	0/91/91/110	0/0/0/0

All (153) bond length outliers are listed below:

Mol	Chain	Res	Type	Atoms	Z	Observed(Å)	Ideal(Å)
6	L	1711	LDA	O1-N1	-15.01	1.25	1.39

Continued on next page...

Continued from previous page...

Mol	Chain	Res	Type	Atoms	Z	Observed(Å)	Ideal(Å)
6	M	1309	LDA	O1-N1	-14.58	1.25	1.39
7	M	1313	BPH	C1D-CHD	14.50	1.51	1.35
6	M	1308	LDA	O1-N1	-14.37	1.25	1.39
6	L	1283	LDA	O1-N1	-14.34	1.25	1.39
6	M	1310	LDA	O1-N1	-14.33	1.25	1.39
6	M	1307	LDA	O1-N1	-14.23	1.26	1.39
6	M	1311	LDA	O1-N1	-14.23	1.26	1.39
6	M	1306	LDA	O1-N1	-14.08	1.26	1.39
6	M	1305	LDA	O1-N1	-14.05	1.26	1.39
5	L	1282	BCL	OBD-CAD	13.17	1.41	1.22
13	M	1315	SPO	C27-C28	13.09	1.47	1.34
5	L	1286	BCL	OBD-CAD	12.71	1.40	1.22
7	M	1313	BPH	OBD-CAD	12.69	1.40	1.22
7	L	1284	BPH	C1D-CHD	12.63	1.49	1.35
5	M	1304	BCL	OBD-CAD	12.61	1.40	1.22
5	M	1303	BCL	OBD-CAD	12.40	1.40	1.22
7	L	1284	BPH	OBD-CAD	12.15	1.40	1.22
13	M	1315	SPO	C9-C7	9.44	1.48	1.35
13	M	1315	SPO	C22-C23	9.17	1.47	1.35
13	M	1315	SPO	C19-C17	9.11	1.47	1.35
13	M	1315	SPO	C14-C12	8.40	1.46	1.35
12	M	1314	U10	C33-C34	8.10	1.49	1.32
14	M	1316	CDL	C43-C42	-8.05	1.51	1.55
12	M	1314	U10	C13-C14	8.04	1.49	1.32
8	L	1285[B]	UQ2	C8-C9	7.96	1.49	1.32
13	M	1315	SPO	C32-C33	7.80	1.48	1.32
7	L	1284	BPH	O1D-CGD	7.69	1.40	1.21
14	M	1316	CDL	C58-C57	-7.66	1.52	1.55
8	L	1285[A]	UQ2	C8-C9	7.57	1.48	1.32
14	M	1316	CDL	C11-CA5	-7.54	1.27	1.50
12	M	1314	U10	C8-C9	7.53	1.48	1.32
14	M	1316	CDL	C84-C83	-7.52	1.52	1.55
7	M	1313	BPH	C2-C3	7.49	1.48	1.32
14	M	1316	CDL	C24-C23	-7.42	1.52	1.55
12	M	1314	U10	C23-C24	7.08	1.47	1.32
7	M	1313	BPH	O1D-CGD	7.07	1.39	1.21
7	L	1284	BPH	C2-C3	7.07	1.47	1.32
12	M	1314	U10	C28-C29	6.91	1.46	1.32
12	M	1314	U10	C38-C39	6.80	1.47	1.34
12	M	1314	U10	C18-C19	6.78	1.46	1.32
14	M	1316	CDL	C12-C11	-6.58	1.26	1.52
14	M	1316	CDL	C32-C31	-6.54	1.26	1.52

Continued on next page...

Continued from previous page...

Mol	Chain	Res	Type	Atoms	Z	Observed(Å)	Ideal(Å)
7	L	1284	BPH	O1A-CGA	6.25	1.41	1.22
5	M	1303	BCL	O1A-CGA	6.15	1.41	1.22
5	M	1304	BCL	O1A-CGA	5.88	1.40	1.22
7	L	1284	BPH	OBb-CAB	5.84	1.42	1.22
5	L	1282	BCL	O1A-CGA	5.84	1.40	1.22
7	M	1313	BPH	O1A-CGA	5.78	1.39	1.22
5	L	1286	BCL	O1A-CGA	5.51	1.39	1.22
5	M	1303	BCL	C4D-C3D	-5.47	1.34	1.41
7	M	1313	BPH	OBb-CAB	5.35	1.41	1.22
14	M	1316	CDL	C33-C32	-5.21	1.19	1.51
13	M	1315	SPO	C37-C38	5.16	1.49	1.32
8	L	1285[A]	UQ2	O2-C2	-5.11	1.23	1.36
5	L	1286	BCL	C4D-C3D	-4.95	1.35	1.41
14	M	1316	CDL	C34-C33	-4.95	1.21	1.51
5	M	1304	BCL	C4D-C3D	-4.88	1.35	1.41
13	M	1315	SPO	C6-C5	4.87	1.46	1.31
8	L	1285[B]	UQ2	C13-C14	4.86	1.48	1.32
8	L	1285[A]	UQ2	C13-C14	4.83	1.48	1.32
8	L	1285[B]	UQ2	O2-C2	-4.79	1.24	1.36
7	M	1313	BPH	C4D-C3D	-4.64	1.35	1.41
8	L	1285[B]	UQ2	O3-C3	-4.61	1.25	1.36
14	M	1316	CDL	OB6-CB5	4.54	1.48	1.34
5	L	1282	BCL	C4D-C3D	-4.54	1.36	1.41
13	M	1315	SPO	C10-C11	4.54	1.46	1.34
8	L	1285[A]	UQ2	O3-C3	-4.52	1.25	1.36
14	M	1316	CDL	OA8-CA7	4.48	1.47	1.33
12	M	1314	U10	O4-C4	-4.48	1.25	1.36
13	M	1315	SPO	C15-C16	4.45	1.46	1.34
5	L	1286	BCL	C2-C3	4.40	1.41	1.32
14	M	1316	CDL	OB8-CB7	4.29	1.46	1.33
14	M	1316	CDL	OA6-CA5	4.23	1.47	1.34
5	L	1282	BCL	C3D-CAD	-4.20	1.38	1.47
12	M	1314	U10	O3-C3	-4.13	1.26	1.36
14	M	1316	CDL	C16-C15	-4.08	1.26	1.51
13	M	1315	SPO	C26-C25	4.08	1.45	1.34
14	M	1316	CDL	C17-C16	-4.02	1.26	1.51
14	M	1316	CDL	C20-C19	-4.00	1.27	1.51
5	M	1303	BCL	C2-C3	3.97	1.40	1.32
7	L	1284	BPH	C3D-CAD	-3.96	1.39	1.47
14	M	1316	CDL	C19-C18	-3.94	1.27	1.51
13	M	1315	SPO	C21-C20	3.91	1.46	1.35
5	L	1286	BCL	C3D-CAD	-3.91	1.39	1.47

Continued on next page...

Continued from previous page...

Mol	Chain	Res	Type	Atoms	Z	Observed(Å)	Ideal(Å)
5	M	1303	BCL	C3D-CAD	-3.74	1.39	1.47
5	L	1286	BCL	C4B-NB	3.73	1.39	1.34
5	L	1282	BCL	C2-C3	3.67	1.40	1.32
5	M	1304	BCL	C3D-CAD	-3.66	1.39	1.47
7	L	1284	BPH	C4D-C3D	-3.64	1.37	1.41
5	M	1304	BCL	C2-C3	3.55	1.40	1.32
5	M	1304	BCL	C1A-NA	3.51	1.40	1.32
7	M	1313	BPH	C3D-CAD	-3.32	1.40	1.47
14	M	1316	CDL	C13-C12	-3.24	1.31	1.51
7	M	1313	BPH	C3D-C2D	3.19	1.50	1.40
5	L	1286	BCL	C1A-NA	3.16	1.39	1.32
8	L	1285[A]	UQ2	C3-C4	-3.13	1.39	1.48
12	M	1314	U10	C4-C5	-3.09	1.39	1.48
8	L	1285[B]	UQ2	C3-C4	-3.05	1.40	1.48
5	M	1303	BCL	C1B-NB	3.04	1.38	1.34
5	M	1303	BCL	C4B-NB	3.01	1.38	1.34
7	M	1313	BPH	CHD-C4C	2.93	1.47	1.41
6	M	1307	LDA	C1-N1	-2.88	1.45	1.51
5	L	1282	BCL	C4B-NB	2.87	1.38	1.34
14	M	1316	CDL	C37-C36	-2.86	1.34	1.51
7	L	1284	BPH	C3D-C2D	2.79	1.48	1.40
14	M	1316	CDL	C79-C78	-2.76	1.34	1.51
8	L	1285[B]	UQ2	C6-C5	2.75	1.41	1.35
5	L	1282	BCL	C1A-NA	2.74	1.38	1.32
14	M	1316	CDL	C22-C21	-2.73	1.34	1.51
5	M	1303	BCL	C1A-NA	2.69	1.38	1.32
14	M	1316	CDL	C80-C79	-2.69	1.35	1.51
12	M	1314	U10	C3-C2	-2.67	1.41	1.48
12	M	1314	U10	C6-C1	2.63	1.41	1.35
8	L	1285[B]	UQ2	C2-C1	-2.61	1.41	1.48
7	L	1284	BPH	O2D-CGD	-2.60	1.26	1.33
5	M	1303	BCL	C1C-NC	-2.59	1.33	1.39
5	L	1286	BCL	C1B-NB	2.58	1.37	1.34
7	M	1313	BPH	O2A-CGA	-2.57	1.25	1.33
7	M	1313	BPH	O2D-CGD	-2.55	1.26	1.33
5	L	1282	BCL	C1B-NB	2.53	1.37	1.34
5	L	1282	BCL	C1C-NC	-2.53	1.33	1.39
7	L	1284	BPH	CHB-C4A	2.52	1.48	1.38
7	L	1284	BPH	CHD-C4C	2.49	1.46	1.41
8	L	1285[A]	UQ2	C6-C1	-2.47	1.39	1.46
7	M	1313	BPH	CHC-C1C	2.47	1.47	1.38
5	M	1304	BCL	C4B-NB	2.47	1.37	1.34

Continued on next page...

Continued from previous page...

Mol	Chain	Res	Type	Atoms	Z	Observed(Å)	Ideal(Å)
5	M	1303	BCL	O2D-CGD	-2.45	1.26	1.33
5	M	1303	BCL	CHD-C4C	2.45	1.47	1.39
5	M	1304	BCL	C3C-C4C	-2.44	1.48	1.51
5	L	1282	BCL	O2A-CGA	-2.40	1.25	1.33
5	M	1304	BCL	C1C-NC	-2.39	1.34	1.39
6	M	1310	LDA	C1-N1	-2.31	1.47	1.51
6	M	1309	LDA	C1-N1	-2.28	1.47	1.51
6	M	1306	LDA	C1-N1	-2.24	1.47	1.51
5	L	1282	BCL	O2D-CGD	-2.23	1.27	1.33
6	L	1711	LDA	C1-N1	-2.22	1.47	1.51
7	M	1313	BPH	C1C-NC	-2.21	1.33	1.38
7	M	1313	BPH	CHB-C4A	2.21	1.46	1.38
7	M	1313	BPH	C4A-NA	-2.21	1.33	1.38
5	M	1304	BCL	CHD-C4C	2.21	1.46	1.39
7	M	1313	BPH	C4D-ND	-2.20	1.35	1.38
5	M	1304	BCL	O2D-CGD	-2.19	1.27	1.33
5	L	1286	BCL	C1C-NC	-2.13	1.34	1.39
7	M	1313	BPH	C1B-NB	-2.12	1.34	1.36
12	M	1314	U10	C41-C39	2.12	1.52	1.40
6	M	1308	LDA	C1-N1	-2.11	1.47	1.51
5	L	1286	BCL	CHD-C4C	2.09	1.45	1.39
7	L	1284	BPH	C1C-NC	-2.08	1.34	1.38
5	L	1286	BCL	O2D-CGD	-2.06	1.27	1.33
6	M	1311	LDA	C1-N1	-2.04	1.47	1.51
5	M	1304	BCL	C1B-NB	2.03	1.37	1.34
7	L	1284	BPH	CHC-C1C	2.02	1.46	1.38

All (187) bond angle outliers are listed below:

Mol	Chain	Res	Type	Atoms	Z	Observed(°)	Ideal(°)
14	M	1316	CDL	C33-C32-C31	17.02	177.43	113.28
14	M	1316	CDL	C12-C11-CA5	12.22	161.41	113.51
14	M	1316	CDL	C17-C16-C15	11.05	174.41	114.61
14	M	1316	CDL	C20-C19-C18	10.79	173.01	114.61
14	M	1316	CDL	C13-C12-C11	10.35	152.29	113.28
14	M	1316	CDL	C34-C33-C32	9.97	168.54	114.61
14	M	1316	CDL	C35-C34-C33	9.90	168.17	114.61
7	M	1313	BPH	C3B-C2B-C1B	-8.30	102.05	107.01
5	M	1304	BCL	CMB-C2B-C1B	-7.98	116.35	128.62
5	L	1286	BCL	CMB-C2B-C1B	-7.95	116.39	128.62
5	L	1282	BCL	CMB-C2B-C1B	-7.52	117.05	128.62
5	L	1286	BCL	C2D-C1D-ND	-7.16	104.00	109.41

Continued on next page...

Continued from previous page...

Mol	Chain	Res	Type	Atoms	Z	Observed(°)	Ideal(°)
5	M	1303	BCL	CMB-C2B-C1B	-6.99	117.87	128.62
7	L	1284	BPH	C3B-C2B-C1B	-6.67	103.02	107.01
13	M	1315	SPO	C26-C27-C28	-6.67	121.53	127.91
5	M	1304	BCL	CMB-C2B-C3B	5.86	134.21	124.97
5	M	1303	BCL	C2D-C1D-ND	-5.85	105.00	109.41
7	M	1313	BPH	C1D-C2D-C3D	-5.81	101.91	106.89
7	M	1313	BPH	O2D-CGD-CBD	5.68	122.89	111.33
5	L	1286	BCL	CMB-C2B-C3B	5.63	133.84	124.97
5	L	1282	BCL	CMB-C2B-C3B	5.21	133.18	124.97
5	L	1282	BCL	O2D-CGD-CBD	5.19	121.90	111.33
5	M	1303	BCL	CMB-C2B-C3B	5.19	133.14	124.97
5	M	1303	BCL	CHC-C4B-NB	-5.18	115.92	124.58
12	M	1314	U10	C30-C29-C31	5.11	123.15	115.39
13	M	1315	SPO	C20-C19-C17	-5.08	119.97	127.29
14	M	1316	CDL	OA6-CA5-C11	4.97	122.44	111.56
5	M	1303	BCL	O2D-CGD-CBD	4.88	121.26	111.33
5	L	1282	BCL	C2D-C1D-ND	-4.77	105.81	109.41
5	M	1303	BCL	C3A-C4A-CHB	-4.76	114.43	124.33
13	M	1315	SPO	C21-C22-C23	-4.57	120.72	127.29
7	M	1313	BPH	OBD-CAD-CBD	-4.54	119.09	125.94
7	L	1284	BPH	OBD-CAD-CBD	-4.52	119.12	125.94
13	M	1315	SPO	C10-C9-C7	-4.51	120.79	127.29
7	L	1284	BPH	CMD-C2D-C1D	4.46	133.03	125.81
7	L	1284	BPH	O2D-CGD-CBD	4.42	120.33	111.33
14	M	1316	CDL	OB6-CB5-C51	4.37	121.14	111.56
7	L	1284	BPH	OBD-CAD-C3D	-4.32	119.88	127.91
5	L	1282	BCL	C2B-C1B-NB	-4.18	106.26	109.41
5	M	1304	BCL	C2D-C1D-ND	-4.16	106.27	109.41
5	L	1286	BCL	C4D-ND-C1D	4.12	111.55	106.57
5	M	1304	BCL	C4B-CHC-C1C	-4.11	121.51	130.06
5	M	1303	BCL	C2B-C1B-NB	-4.03	106.37	109.41
5	M	1303	BCL	C4D-ND-C1D	4.01	111.41	106.57
8	L	1285[A]	UQ2	CM3-O3-C3	4.00	130.06	116.48
13	M	1315	SPO	C15-C14-C12	-3.85	121.75	127.29
5	L	1286	BCL	O2D-CGD-CBD	3.82	119.12	111.33
5	M	1304	BCL	O2D-CGD-CBD	3.81	119.08	111.33
5	L	1286	BCL	C2B-C1B-NB	-3.77	106.57	109.41
5	L	1282	BCL	CMD-C2D-C1D	3.76	133.60	126.16
8	L	1285[A]	UQ2	O1-C1-C6	-3.74	114.80	121.67
5	L	1286	BCL	C4B-CHC-C1C	-3.74	122.29	130.06
13	M	1315	SPO	C29-C28-C30	3.68	120.98	115.39
5	L	1282	BCL	C4-C3-C5	3.57	120.82	115.39

Continued on next page...

Continued from previous page...

Mol	Chain	Res	Type	Atoms	Z	Observed(°)	Ideal(°)
5	L	1282	BCL	CMD-C2D-C3D	-3.57	119.34	124.97
12	M	1314	U10	C27-C28-C29	-3.55	120.14	127.80
5	L	1286	BCL	C2A-C3A-C4A	3.54	106.85	101.40
5	L	1282	BCL	O1D-CGD-CBD	-3.54	117.17	124.42
5	L	1286	BCL	O2A-CGA-CBA	3.44	122.77	111.94
12	M	1314	U10	C10-C9-C11	3.44	120.62	115.39
5	M	1304	BCL	O2A-CGA-CBA	3.42	122.71	111.94
5	L	1282	BCL	C4B-CHC-C1C	-3.39	123.01	130.06
5	M	1303	BCL	C4B-CHC-C1C	-3.38	123.02	130.06
5	M	1304	BCL	CMD-C2D-C1D	3.36	132.79	126.16
8	L	1285[A]	UQ2	CM5-C5-C6	-3.34	117.57	124.20
12	M	1314	U10	C22-C23-C24	-3.30	120.68	127.80
7	M	1313	BPH	C2B-C1B-NB	3.26	114.50	108.16
7	L	1284	BPH	C2B-C1B-NB	3.26	114.50	108.16
7	M	1313	BPH	CMD-C2D-C3D	-3.24	119.87	124.97
5	M	1303	BCL	C1B-CHB-C4A	-3.23	123.33	130.06
5	M	1303	BCL	C1-O2A-CGA	3.22	126.00	116.98
5	L	1286	BCL	CHC-C1C-NC	-3.22	120.76	124.58
12	M	1314	U10	C25-C24-C26	3.18	120.22	115.39
6	M	1307	LDA	C2-C1-N1	-3.17	108.34	113.80
7	M	1313	BPH	CMD-C2D-C1D	3.15	130.91	125.81
5	L	1282	BCL	CHA-C1A-NA	-3.14	119.77	126.22
7	L	1284	BPH	C1D-C2D-C3D	-3.13	104.21	106.89
5	L	1286	BCL	C3A-C4A-CHB	-3.12	117.84	124.33
5	L	1286	BCL	CHC-C4B-NB	-3.11	119.39	124.58
7	L	1284	BPH	C3B-C4B-NB	3.09	110.59	107.10
5	L	1282	BCL	C3A-C4A-CHB	-3.07	117.94	124.33
7	L	1284	BPH	O1D-CGD-CBD	-3.07	118.13	124.42
7	M	1313	BPH	O2D-CGD-O1D	-3.03	117.64	123.79
5	L	1286	BCL	CMD-C2D-C1D	3.02	132.12	126.16
5	L	1282	BCL	CHB-C4A-NA	-3.01	121.00	124.58
5	M	1304	BCL	CED-O2D-CGD	2.97	123.09	116.02
14	M	1316	CDL	OB8-CB7-C71	2.97	121.28	111.94
5	M	1304	BCL	C4-C3-C5	2.95	119.88	115.39
7	L	1284	BPH	O2A-CGA-CBA	2.94	121.19	111.94
7	L	1284	BPH	C1-C2-C3	-2.94	120.95	126.19
12	M	1314	U10	C35-C34-C36	2.92	119.84	115.39
7	M	1313	BPH	CAC-C3C-C4C	2.92	120.73	112.68
5	L	1286	BCL	CMD-C2D-C3D	-2.92	120.37	124.97
5	L	1282	BCL	CHC-C4B-NB	-2.90	119.74	124.58
5	L	1282	BCL	C4D-ND-C1D	2.88	110.05	106.57
7	L	1284	BPH	CED-O2D-CGD	2.88	122.87	116.02

Continued on next page...

Continued from previous page...

Mol	Chain	Res	Type	Atoms	Z	Observed(°)	Ideal(°)
7	M	1313	BPH	C4B-C3B-C2B	2.87	109.68	107.60
5	L	1286	BCL	CED-O2D-CGD	2.87	122.86	116.02
7	M	1313	BPH	CMB-C2B-C1B	-2.87	124.28	128.65
5	M	1303	BCL	C1D-CHD-C4C	-2.86	120.61	125.55
12	M	1314	U10	C17-C18-C19	-2.86	121.63	127.80
8	L	1285[B]	UQ2	C10-C9-C11	2.83	119.69	115.39
12	M	1314	U10	C30-C29-C28	-2.82	117.93	123.52
5	L	1282	BCL	C2A-C3A-C4A	2.82	105.74	101.40
6	M	1305	LDA	O1-N1-C1	2.78	114.06	110.19
7	M	1313	BPH	CED-O2D-CGD	2.77	122.61	116.02
5	M	1304	BCL	C2B-C1B-NB	-2.76	107.33	109.41
7	M	1313	BPH	O2A-CGA-CBA	2.73	120.53	111.94
5	L	1286	BCL	C1-O2A-CGA	2.73	124.62	116.98
13	M	1315	SPO	C4-C5-C6	-2.73	120.44	124.95
5	M	1303	BCL	CHA-C1A-NA	-2.70	120.67	126.22
5	L	1286	BCL	CMA-C3A-C4A	-2.70	103.91	111.76
13	M	1315	SPO	C34-C33-C35	2.70	119.49	115.39
13	M	1315	SPO	C31-C32-C33	-2.69	121.99	127.80
5	M	1303	BCL	C2C-C1C-NC	2.68	114.21	110.95
5	M	1303	BCL	O2A-CGA-CBA	2.67	120.34	111.94
5	M	1303	BCL	OBD-CAD-CBD	-2.64	121.96	125.94
5	M	1304	BCL	C16-C15-C13	-2.64	107.54	115.14
5	L	1282	BCL	C1-C2-C3	-2.64	121.50	126.19
14	M	1316	CDL	OA8-CA7-C31	2.63	120.22	111.94
5	M	1304	BCL	CHC-C4B-NB	-2.63	120.18	124.58
5	M	1304	BCL	O2D-CGD-O1D	-2.63	118.45	123.79
7	L	1284	BPH	C4D-C3D-C2D	-2.62	104.20	107.37
5	M	1304	BCL	CMD-C2D-C3D	-2.61	120.85	124.97
12	M	1314	U10	C15-C14-C16	2.59	119.33	115.39
5	M	1303	BCL	CAA-C2A-C3A	-2.58	106.94	113.04
14	M	1316	CDL	C21-C22-C23	2.57	123.52	113.78
7	M	1313	BPH	C1-C2-C3	-2.55	121.65	126.19
5	M	1303	BCL	CMA-C3A-C4A	-2.54	104.40	111.76
5	M	1304	BCL	CAC-C3C-C4C	-2.52	106.99	112.58
5	L	1282	BCL	C1C-NC-C4C	-2.50	104.75	107.79
5	M	1303	BCL	C2A-C3A-C4A	2.49	105.23	101.40
5	M	1303	BCL	O2A-C1-C2	2.48	113.93	108.55
5	M	1304	BCL	C4D-ND-C1D	2.47	109.55	106.57
5	L	1286	BCL	CHB-C4A-NA	-2.46	121.66	124.58
12	M	1314	U10	C32-C33-C34	-2.46	122.49	127.80
5	M	1304	BCL	CGD-CBD-CHA	-2.46	102.60	110.96
5	L	1282	BCL	C1B-CHB-C4A	-2.45	124.96	130.06

Continued on next page...

Continued from previous page...

Mol	Chain	Res	Type	Atoms	Z	Observed(°)	Ideal(°)
5	M	1304	BCL	C1-C2-C3	-2.45	121.83	126.19
5	M	1303	BCL	O2D-CGD-O1D	-2.44	118.84	123.79
7	M	1313	BPH	O1D-CGD-CBD	-2.43	119.44	124.42
8	L	1285[A]	UQ2	C10-C9-C11	2.42	119.08	115.39
12	M	1314	U10	C20-C19-C21	2.41	119.06	115.39
7	L	1284	BPH	C1B-NB-C4B	-2.41	103.19	108.72
5	L	1286	BCL	C2C-C1C-CHC	-2.38	119.37	124.33
5	L	1282	BCL	O2A-CGA-CBA	2.38	119.43	111.94
5	L	1282	BCL	C2C-C1C-CHC	-2.37	119.41	124.33
5	M	1304	BCL	OB B-CAB-C3B	2.36	123.62	120.07
5	M	1304	BCL	C2A-C1A-NA	2.36	113.85	111.24
5	L	1282	BCL	CBD-CHA-C1A	2.36	131.85	128.77
14	M	1316	CDL	C32-C31-CA7	2.35	122.72	113.51
5	L	1282	BCL	C1D-CHD-C4C	-2.35	121.50	125.55
8	L	1285[B]	UQ2	C5-C6-C1	-2.33	117.33	120.26
14	M	1316	CDL	CA6-OA8-CA7	2.31	123.91	117.13
5	L	1282	BCL	CAA-C2A-C3A	-2.30	107.59	113.04
5	M	1303	BCL	CBD-CHA-C1A	2.30	131.78	128.77
7	M	1313	BPH	OBD-CAD-C3D	-2.30	123.64	127.91
5	L	1282	BCL	C2B-C1B-CHB	2.29	130.35	126.00
5	M	1303	BCL	CMD-C2D-C1D	2.27	130.65	126.16
12	M	1314	U10	C11-C9-C8	-2.27	116.71	121.08
5	L	1286	BCL	CGD-CBD-CHA	2.25	118.61	110.96
12	M	1314	U10	C3M-O3-C3	2.24	124.10	116.48
6	M	1305	LDA	CM2-N1-CM1	-2.24	106.29	108.85
5	M	1304	BCL	C7-C6-C5	-2.23	106.44	113.01
13	M	1315	SPO	C8-C7-C6	2.22	121.68	118.09
5	M	1303	BCL	O1D-CGD-CBD	-2.21	119.89	124.42
13	M	1315	SPO	C14-C15-C16	-2.21	115.79	123.24
8	L	1285[A]	UQ2	C16-C14-C15	2.20	120.23	114.62
12	M	1314	U10	C4M-O4-C4	2.18	123.88	116.48
7	M	1313	BPH	C3C-C4C-CHD	2.17	126.35	121.83
5	L	1282	BCL	O2A-CGA-O1A	-2.14	117.60	123.43
8	L	1285[A]	UQ2	O4-C4-C3	-2.12	116.25	120.96
7	L	1284	BPH	CAC-C3C-C2C	2.12	118.75	113.89
7	L	1284	BPH	O2A-CGA-O1A	-2.10	117.70	123.43
12	M	1314	U10	C12-C13-C14	-2.09	123.28	127.80
5	L	1286	BCL	C2B-C1B-CHB	2.08	129.95	126.00
5	L	1286	BCL	C1B-CHB-C4A	-2.08	125.74	130.06
13	M	1315	SPO	C8-C7-C9	-2.07	119.98	122.92
5	L	1286	BCL	O2D-CGD-O1D	-2.07	119.59	123.79
5	L	1286	BCL	CAA-C2A-C1A	-2.07	106.47	111.62

Continued on next page...

Continued from previous page...

Mol	Chain	Res	Type	Atoms	Z	Observed(°)	Ideal(°)
5	L	1282	BCL	CHC-C1C-NC	-2.05	122.15	124.58
5	M	1303	BCL	C3B-C4B-CHC	-2.04	122.13	126.00
13	M	1315	SPO	C18-C17-C16	2.04	121.39	118.09
8	L	1285[B]	UQ2	C10-C9-C8	-2.03	119.50	123.52
5	L	1286	BCL	C4-C3-C5	2.03	118.47	115.39
7	M	1313	BPH	C4-C3-C5	2.02	118.47	115.39
5	L	1286	BCL	CHA-C1A-NA	-2.01	122.09	126.22

All (13) chirality outliers are listed below:

Mol	Chain	Res	Type	Atom
7	M	1313	BPH	C8
7	M	1313	BPH	C13
14	M	1316	CDL	CA4
5	M	1303	BCL	C8
5	M	1303	BCL	C13
7	L	1284	BPH	C8
7	L	1284	BPH	C13
5	M	1304	BCL	C8
5	M	1304	BCL	C13
5	L	1286	BCL	C8
5	L	1286	BCL	C13
5	L	1282	BCL	C8
5	L	1282	BCL	C13

There are no torsion outliers.

There are no ring outliers.

5.7 Other polymers ⓘ

There are no such residues in this entry.

5.8 Polymer linkage issues

There are no chain breaks in this entry.

6 Fit of model and data ⓘ

6.1 Protein, DNA and RNA chains ⓘ

In the following table, the column labelled ‘#RSRZ > 2’ contains the number (and percentage) of RSRZ outliers, followed by percent RSRZ outliers for the chain as percentile scores relative to all X-ray entries and entries of similar resolution. The OWAB column contains the minimum, median, 95th percentile and maximum values of the occupancy-weighted average B-factor per residue. The column labelled ‘Q < 0.9’ lists the number of (and percentage) of residues with an average occupancy less than 0.9.

Mol	Chain	Analysed	<RSRZ>	#RSRZ>2	OWAB(Å ²)	Q<0.9
1	H	241/260 (92%)	-0.25	9 (3%) 39 41	38, 48, 61, 105	0
2	L	281/281 (100%)	-0.30	8 (2%) 50 53	35, 44, 69, 77	0
3	M	303/307 (98%)	0.04	13 (4%) 34 35	33, 50, 73, 86	0
All	All	825/848 (97%)	-0.16	30 (3%) 38 42	33, 47, 72, 105	0

All (30) RSRZ outliers are listed below:

Mol	Chain	Res	Type	RSRZ
3	M	1	ALA	6.4
1	H	249	LYS	5.8
1	H	250	SER	5.7
3	M	303	MET	5.6
1	H	246	PRO	4.5
2	L	59	TRP	4.1
3	M	148[A]	TRP	3.3
2	L	277	GLY	3.3
2	L	271	TRP	3.1
1	H	220[A]	LYS	3.1
2	L	270	PRO	3.0
2	L	281	GLY	3.0
3	M	80	TRP	2.9
1	H	247	LYS	2.9
2	L	278	GLY	2.8
1	H	251	VAL	2.7
2	L	272	TRP	2.6
3	M	302	GLY	2.5
1	H	60	LYS	2.5
3	M	2	GLU	2.5
3	M	223	ILE	2.4
1	H	221	SER	2.4
2	L	202	LYS	2.4

Continued on next page...

Continued from previous page...

Mol	Chain	Res	Type	RSRZ
3	M	301	HIS	2.3
3	M	106	ALA	2.3
1	H	18	TYR	2.2
3	M	79	GLY	2.2
3	M	82	PRO	2.2
3	M	265	ILE	2.1
3	M	76	TYR	2.0

6.2 Non-standard residues in protein, DNA, RNA chains ⓘ

There are no non-standard protein/DNA/RNA residues in this entry.

6.3 Carbohydrates ⓘ

There are no carbohydrates in this entry.

6.4 Ligands ⓘ

In the following table, the Atoms column lists the number of modelled atoms in the group and the number defined in the chemical component dictionary. LLDF column lists the quality of electron density of the group with respect to its neighbouring residues in protein, DNA or RNA chains. The B-factors column lists the minimum, median, 95th percentile and maximum values of B factors of atoms in the group. The column labelled 'Q < 0.9' lists the number of atoms with occupancy less than 0.9.

Mol	Type	Chain	Res	Atoms	RSR	LLDF	B-factors(Å ²)	Q<0.9
6	LDA	M	1311	16/16	0.59	23.88	115,118,122,122	0
4	GOL	H	1253	6/6	0.39	14.99	103,104,106,106	0
6	LDA	L	1711	16/16	0.48	14.30	108,112,117,117	0
6	LDA	L	1283	16/16	0.39	14.13	78,103,114,115	0
6	LDA	M	1308	16/16	0.37	12.19	96,99,107,108	0
10	HTO	L	1288	10/10	0.42	9.71	83,85,85,86	0
6	LDA	M	1310	16/16	0.64	8.69	101,111,118,118	0
6	LDA	M	1309	16/16	0.53	8.63	118,120,126,126	0
4	GOL	H	1251	6/6	0.32	8.32	70,75,76,76	0
4	GOL	L	1290	6/6	0.33	6.04	98,99,99,100	0
6	LDA	M	1306	16/16	0.45	5.06	70,74,86,87	0
14	CDL	M	1316	81/100	0.45	3.54	91,107,125,126	0
4	GOL	H	1252	6/6	0.32	3.46	93,94,94,95	0
6	LDA	M	1305	16/16	0.29	3.09	70,80,85,85	0

Continued on next page...

Continued from previous page...

Mol	Type	Chain	Res	Atoms	RSR	LLDF	B-factors(\AA^2)	Q<0.9
8	UQ2	L	1285[B]	23/23	0.31	2.57	42,47,53,54	23
13	SPO	M	1315	42/42	0.22	2.41	44,57,77,80	0
8	UQ2	L	1285[A]	23/23	0.31	2.38	38,44,54,55	23
4	GOL	L	1289	6/6	0.29	1.64	65,69,70,73	0
12	U10	M	1314	48/63	0.24	1.27	36,47,75,78	0
7	BPH	M	1313	65/65	0.23	1.24	38,45,98,99	0
6	LDA	M	1307	16/16	0.18	0.69	68,70,76,77	0
5	BCL	M	1303	66/66	0.15	0.67	30,36,89,90	0
5	BCL	M	1304	66/66	0.16	0.56	30,36,58,65	0
5	BCL	L	1286	66/66	0.12	0.21	30,38,51,56	0
7	BPH	L	1284	65/65	0.12	0.02	29,36,45,48	0
9	PO4	L	1287	5/5	0.13	-0.09	100,100,101,101	0
5	BCL	L	1282	66/66	0.12	-0.19	29,35,58,61	0
11	FE	M	1312	1/1	0.09	-4.24	34,34,34,34	0
4	GOL	H	1254	6/6	0.23	-	92,93,93,93	0

6.5 Other polymers ⓘ

There are no such residues in this entry.