



# Full wwPDB X-ray Structure Validation Report ⓘ

Feb 27, 2014 – 01:53 AM GMT

PDB ID : 3UYW  
Title : Crystal structures of globular head of 2009 pandemic H1N1 hemagglutinin  
Authors : Xuan, C.L.; Shi, Y.; Qi, J.X.; Xiao, H.X.; Gao, G.F.  
Deposited on : 2011-12-06  
Resolution : 1.90 Å(reported)

This is a full wwPDB validation report for a publicly released PDB entry.  
We welcome your comments at [validation@mail.wwpdb.org](mailto:validation@mail.wwpdb.org)  
A user guide is available at <http://wwpdb.org/ValidationPDFNotes.html>

---

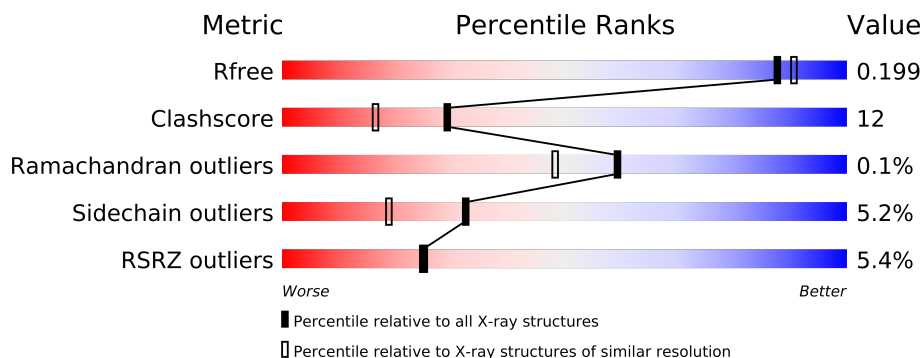
The following versions of software and data (see [references](#)) were used in the production of this report:

MolProbity : 4.02b-467  
Mogul : 1.15 2013  
Xtriage (Phenix) : dev-1323  
EDS : stable22639  
Percentile statistics : 21963  
Refmac : 5.8.0049  
CCP4 : 6.3.0 (Settle)  
Ideal geometry (proteins) : Engh & Huber (2001)  
Ideal geometry (DNA, RNA) : Parkinson et. al. (1996)  
Validation Pipeline (wwPDB-VP) : stable22683

# 1 Overall quality at a glance

The reported resolution of this entry is 1.90 Å.

Percentile scores (ranging between 0-100) for global validation metrics of the entry are shown in the following graphic. The table shows the number of entries on which the scores are based.



Metric	Whole archive (#Entries)	Similar resolution (#Entries, resolution range(Å))
$R_{free}$	66092	3684 (1.90-1.90)
Clashscore	79885	4465 (1.90-1.90)
Ramachandran outliers	78287	4413 (1.90-1.90)
Sidechain outliers	78261	4414 (1.90-1.90)
RSRZ outliers	66119	3686 (1.90-1.90)

The table below summarises the geometric issues observed across the polymeric chains and their fit to the electron density. The red, orange, yellow and green segments on the lower bar indicate the fraction of residues that contain outliers for  $\geq 3$ , 2, 1 and 0 types of geometric quality criteria. The upper red bar (where present) indicates the fraction of residues that have poor fit to the electron density.

Mol	Chain	Length	Quality of chain
1	A	214	
1	B	214	
1	C	214	
1	D	214	

The following table lists non-polymeric compounds that are outliers for geometric or electron-density-fit criteria:

Mol	Type	Chain	Res	Geometry	Electron density
2	TAU	A	1	X	X
2	TAU	C	1	X	X

## 2 Entry composition i

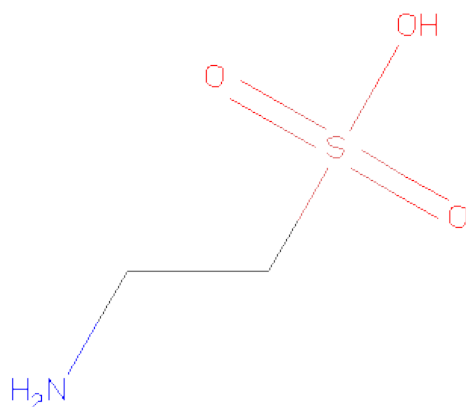
There are 3 unique types of molecules in this entry. The entry contains 7664 atoms, of which 0 are hydrogen and 0 are deuterium.

In the tables below, the ZeroOcc column contains the number of atoms modelled with zero occupancy, the AltConf column contains the number of residues with at least one atom in alternate conformation and the Trace column contains the number of residues modelled with at most 2 atoms.

- Molecule 1 is a protein called Hemagglutinin.

Mol	Chain	Residues	Atoms					ZeroOcc	AltConf	Trace
1	A	214	Total	C	N	O	S	0	0	0
			1703	1087	287	323	6			
1	B	214	Total	C	N	O	S	0	1	0
			1709	1090	288	325	6			
1	C	214	Total	C	N	O	S	0	1	0
			1708	1089	288	325	6			
1	D	214	Total	C	N	O	S	0	1	0
			1709	1090	288	325	6			

- Molecule 2 is 2-AMINOETHANESULFONICACID (three-letter code: TAU) (formula:  $\text{C}_2\text{H}_7\text{NO}_3\text{S}$ ).



Mol	Chain	Residues	Atoms					ZeroOcc	AltConf
2	A	1	Total	C	N	O	S	0	0
			7	2	1	3	1		
2	C	1	Total	C	N	O	S	0	0
			7	2	1	3	1		

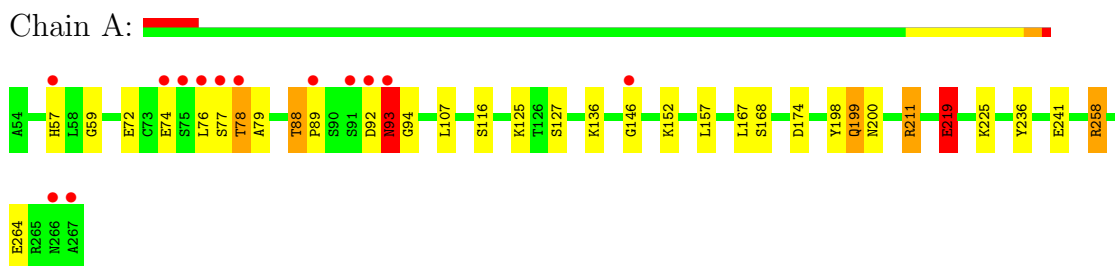
- Molecule 3 is water.

Mol	Chain	Residues	Atoms		ZeroOcc	AltConf
3	A	197	Total 197	O 197	0	0
3	B	203	Total 203	O 203	0	0
3	C	202	Total 202	O 202	0	0
3	D	219	Total 219	O 219	0	0

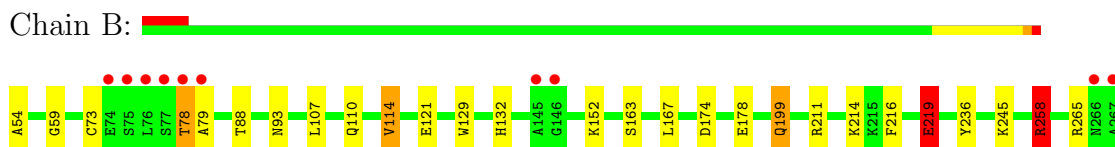
### 3 Residue-property plots

These plots are drawn for all protein, RNA and DNA chains in the entry. The first graphic for a chain summarises the proportions of errors displayed in the second graphic. The second graphic shows the sequence view annotated by issues in geometry and electron density. Residues are color-coded according to the number of geometric quality criteria for which they contain at least one outlier: green = 0, yellow = 1, orange = 2 and red = 3 or more. A red dot above a residue indicates a poor fit to the electron density ( $RSRZ > 2$ ). Stretches of 2 or more consecutive residues without any outlier are shown as a green connector. Residues present in the sample, but not in the model, are shown in grey.

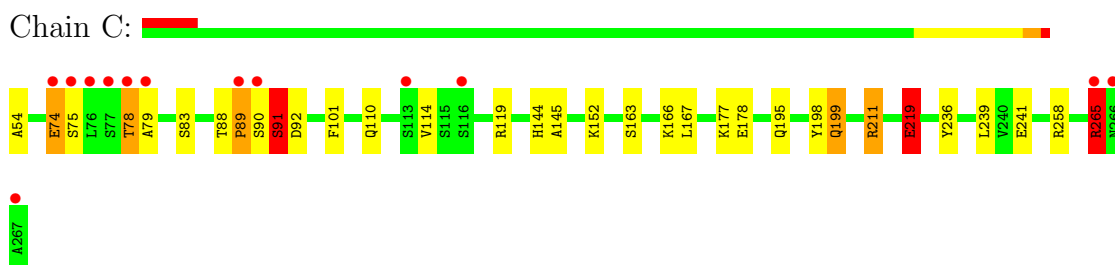
#### • Molecule 1: Hemagglutinin



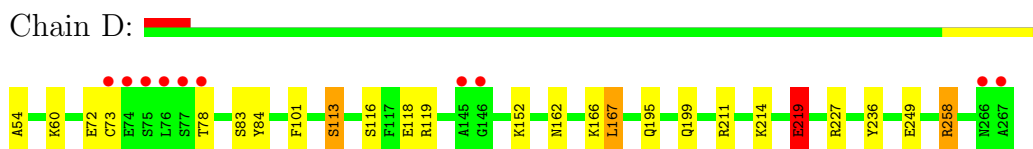
#### • Molecule 1: Hemagglutinin



#### • Molecule 1: Hemagglutinin



#### • Molecule 1: Hemagglutinin



## 4 Data and refinement statistics

Property	Value	Source
Space group	P 1	Depositor
Cell constants a, b, c, $\alpha$ , $\beta$ , $\gamma$	38.67Å 65.92Å 79.48Å 94.46° 89.97° 94.88°	Depositor
Resolution (Å)	35.13 – 1.90 38.53 – 1.90	Depositor EDS
% Data completeness (in resolution range)	95.0 (35.13-1.90) 97.1 (38.53-1.90)	Depositor EDS
$R_{merge}$	(Not available)	Depositor
$R_{sym}$	(Not available)	Depositor
$\langle I/\sigma(I) \rangle$ <sup>1</sup>	4.94 (at 1.91Å)	Xtriage
Refinement program	PHENIX (phenix.refine: 1.5.2)	Depositor
R, $R_{free}$	0.184 , 0.198 0.185 , 0.199	Depositor DCC
$R_{free}$ test set	3015 reflections (5.08%)	DCC
Wilson B-factor (Å <sup>2</sup> )	20.7	Xtriage
Anisotropy	0.449	Xtriage
Bulk solvent $k_{sol}$ (e/Å <sup>3</sup> ), $B_{sol}$ (Å <sup>2</sup> )	0.36 , 36.1	EDS
Estimated twinning fraction	No twinning to report.	Xtriage
L-test for twinning	$\langle  L  \rangle = 0.50$ , $\langle L^2 \rangle = 0.34$	Xtriage
Outliers	0 of 59385 reflections	Xtriage
$F_o, F_c$ correlation	0.95	EDS
Total number of atoms	7664	wwPDB-VP
Average B, all atoms (Å <sup>2</sup> )	27.0	wwPDB-VP

Xtriage's analysis on translational NCS is as follows: *The analyses of the Patterson function reveals a significant off-origin peak that is 22.67 % of the origin peak, indicating pseudo translational symmetry. The chance of finding a peak of this or larger height randomly in a structure without pseudo translational symmetry is equal to 5.4394e-03. The detected translational NCS is most likely also responsible for the elevated intensity ratio.*

<sup>1</sup>Intensities estimated from amplitudes.

## 5 Model quality i

### 5.1 Standard geometry i

Bond lengths and bond angles in the following residue types are not validated in this section: TAU

The Z score for a bond length (or angle) is the number of standard deviations the observed value is removed from the expected value. A bond length (or angle) with  $|Z| > 5$  is considered an outlier worth inspection. RMSZ is the root-mean-square of all Z scores of the bond lengths (or angles).

Mol	Chain	Bond lengths		Bond angles	
		RMSZ	# $ Z  > 5$	RMSZ	# $ Z  > 5$
1	A	0.71	2/1753 (0.1%)	0.69	3/2380 (0.1%)
1	B	0.79	7/1759 (0.4%)	0.63	1/2388 (0.0%)
1	C	0.75	2/1758 (0.1%)	0.79	8/2386 (0.3%)
1	D	0.79	3/1759 (0.2%)	0.73	5/2388 (0.2%)
All	All	0.76	14/7029 (0.2%)	0.71	17/9542 (0.2%)

Chiral center outliers are detected by calculating the chiral volume of a chiral center and verifying if the center is modelled as a planar moiety or with the opposite hand. A planarity outlier is detected by checking planarity of atoms in a peptide group, atoms in a mainchain group or atoms of a sidechain that are expected to be planar.

Mol	Chain	#Chirality outliers	#Planarity outliers
1	A	0	3
1	C	0	1
All	All	0	4

All (14) bond length outliers are listed below:

Mol	Chain	Res	Type	Atoms	Z	Observed(Å)	Ideal(Å)
1	B	219	GLU	CB-CG	-6.93	1.39	1.52
1	A	219	GLU	CB-CG	-6.81	1.39	1.52
1	D	249	GLU	CB-CG	-5.69	1.41	1.52
1	D	113	SER	CB-OG	-5.63	1.34	1.42
1	B	258	ARG	CB-CG	-5.47	1.37	1.52
1	B	178	GLU	CB-CG	-5.34	1.42	1.52
1	B	59	GLY	C-O	-5.32	1.15	1.23
1	B	219	GLU	CG-CD	-5.16	1.44	1.51
1	B	114	VAL	CB-CG2	-5.11	1.42	1.52
1	C	74	GLU	CG-CD	5.11	1.59	1.51
1	B	258	ARG	CG-CD	-5.10	1.39	1.51
1	D	219	GLU	CG-CD	-5.10	1.44	1.51

*Continued on next page...*

*Continued from previous page...*

Mol	Chain	Res	Type	Atoms	Z	Observed(Å)	Ideal(Å)
1	C	219	GLU	CB-CG	-5.07	1.42	1.52
1	A	116	SER	CB-OG	-5.02	1.35	1.42

All (17) bond angle outliers are listed below:

Mol	Chain	Res	Type	Atoms	Z	Observed(°)	Ideal(°)
1	A	258	ARG	NE-CZ-NH1	11.18	125.89	120.30
1	D	119	ARG	NE-CZ-NH1	-10.54	115.03	120.30
1	C	91	SER	N-CA-CB	-9.67	96.00	110.50
1	C	258	ARG	NE-CZ-NH1	9.60	125.10	120.30
1	D	119	ARG	NE-CZ-NH2	9.52	125.06	120.30
1	B	199	GLN	CB-CA-C	-8.78	92.84	110.40
1	A	258	ARG	NE-CZ-NH2	-8.36	116.12	120.30
1	C	258	ARG	NE-CZ-NH2	-8.13	116.23	120.30
1	D	167	LEU	CA-CB-CG	7.87	133.40	115.30
1	C	89	PRO	CB-CA-C	-7.39	93.53	112.00
1	C	119	ARG	NE-CZ-NH1	-6.89	116.86	120.30
1	A	199	GLN	CB-CA-C	-6.75	96.89	110.40
1	C	265	ARG	NE-CZ-NH2	-6.73	116.94	120.30
1	C	119	ARG	NE-CZ-NH2	6.64	123.62	120.30
1	D	258	ARG	NE-CZ-NH1	6.48	123.54	120.30
1	C	199	GLN	CB-CA-C	-6.46	97.48	110.40
1	D	199	GLN	CB-CA-C	-5.34	99.72	110.40

There are no chirality outliers.

All (4) planarity outliers are listed below:

Mol	Chain	Res	Type	Group
1	A	89	PRO	Mainchain,Peptide
1	A	93	ASN	Peptide
1	C	91	SER	Peptide

## 5.2 Close contacts ⓘ

In the following table, the Non-H and H(model) columns list the number of non-hydrogen atoms and hydrogen atoms in the chain respectively. The H(added) column lists the number of hydrogens added by MolProbity. The Clashes column lists the number of clashes within the asymmetric unit, and the number in parentheses is this value normalized per 1000 atoms of the molecule in the chain. The Symm-Clashes column gives symmetry related clashes, in the same way as for the Clashes column.



Mol	Chain	Non-H	H(model)	H(added)	Clashes	Symm-Clashes
1	A	1703	0	0	29	0
1	B	1709	0	0	17	0
1	C	1708	0	0	23	0
1	D	1709	0	0	18	0
2	A	7	0	0	1	0
2	C	7	0	0	0	0
3	A	197	0	0	17	0
3	B	203	0	0	10	0
3	C	202	0	0	11	0
3	D	219	0	0	15	0
All	All	7664	0	0	84	0

Clashscore is defined as the number of clashes calculated for the entry per 1000 atoms (including hydrogens) of the entry. The overall clashscore for this entry is 12.

All (84) close contacts within the same asymmetric unit are listed below.

Atom-1	Atom-2	Distance(Å)	Clash(Å)
1:A:211:ARG:NH2	1:A:241:GLU:CG	1.73	1.48
1:A:59:GLY:O	1:A:88:THR:CG2	1.79	1.28
1:A:92:ASP:O	1:A:94:GLY:N	1.69	1.25
1:D:54:ALA:N	3:D:605:HOH:O	1.82	1.12
1:C:54:ALA:N	3:C:587:HOH:O	1.81	1.11
1:B:110:GLN:NE2	3:B:776:HOH:O	1.83	1.11
1:D:83:SER:CB	3:D:644:HOH:O	1.99	1.08
1:B:54:ALA:N	3:B:693:HOH:O	1.83	1.08
1:A:146:GLY:N	3:A:566:HOH:O	1.90	1.05
2:A:1:TAU:N1	3:A:571:HOH:O	1.95	0.99
1:A:76:LEU:O	3:A:586:HOH:O	1.81	0.98
1:A:211:ARG:NH2	1:A:241:GLU:CD	2.17	0.97
1:C:163:SER:O	3:C:555:HOH:O	1.81	0.97
1:A:136:LYS:NZ	3:A:582:HOH:O	1.99	0.96
1:D:83:SER:C	3:D:644:HOH:O	2.02	0.95
1:A:88:THR:O	3:A:703:HOH:O	1.88	0.92
1:A:211:ARG:NH2	1:A:241:GLU:OE2	2.03	0.92
1:A:168:SER:OG	3:A:327:HOH:O	1.87	0.92
1:A:88:THR:C	3:A:703:HOH:O	2.11	0.88
1:D:83:SER:OG	3:D:644:HOH:O	1.91	0.86
1:A:200:ASN:OD1	3:A:598:HOH:O	1.94	0.85
1:D:83:SER:OG	3:D:605:HOH:O	1.93	0.84
1:D:73:CYS:O	3:D:406:HOH:O	1.94	0.84
1:D:84:TYR:N	3:D:644:HOH:O	2.11	0.83
1:A:78:THR:N	3:A:586:HOH:O	2.13	0.81
1:D:113:SER:N	3:D:294:HOH:O	2.15	0.79

*Continued on next page...*

*Continued from previous page...*

Atom-1	Atom-2	Distance(Å)	Clash(Å)
1:C:166:LYS:NZ	3:C:635:HOH:O	2.17	0.78
1:C:74:GLU:CG	1:C:75:SER:N	2.46	0.77
1:C:83:SER:O	3:C:338:HOH:O	2.03	0.77
1:C:195:GLN:OE1	3:C:524:HOH:O	2.04	0.75
1:C:144:HIS:CD2	3:C:758:HOH:O	2.43	0.71
1:B:199:GLN:O	1:B:199:GLN:CG	2.37	0.70
1:C:211:ARG:CZ	1:C:241:GLU:CG	2.65	0.70
1:D:166:LYS:NZ	3:D:748:HOH:O	2.27	0.68
1:D:84:TYR:CD2	3:D:644:HOH:O	2.48	0.67
1:C:90:SER:O	3:C:695:HOH:O	2.12	0.66
1:D:118:GLU:OE2	3:D:547:HOH:O	2.14	0.66
1:A:127:SER:O	3:A:817:HOH:O	2.13	0.66
1:A:264:GLU:OE1	3:A:765:HOH:O	2.14	0.65
1:C:219:GLU:OE2	3:C:764:HOH:O	2.15	0.65
1:A:57:HIS:ND1	3:A:399:HOH:O	2.30	0.64
1:D:72:GLU:CG	3:D:779:HOH:O	2.47	0.62
1:B:163:SER:CB	3:B:569:HOH:O	2.50	0.59
1:B:174:ASP:OD1	3:B:392:HOH:O	2.15	0.59
1:A:92:ASP:OD1	1:A:93:ASN:N	2.37	0.58
1:B:129:TRP:O	3:B:288:HOH:O	2.17	0.57
1:C:178:GLU:OE1	1:C:265:ARG:NH1	2.39	0.55
1:A:72:GLU:CG	3:A:754:HOH:O	2.55	0.54
1:D:83:SER:CA	3:D:644:HOH:O	2.32	0.53
1:D:227:ARG:NH2	3:D:277:HOH:O	2.42	0.53
1:B:219:GLU:OE1	1:C:236:TYR:OH	2.27	0.52
1:A:77:SER:CA	3:A:586:HOH:O	2.57	0.51
1:B:265:ARG:NH2	3:B:280:HOH:O	2.42	0.51
1:B:211:ARG:O	3:B:433:HOH:O	2.19	0.51
1:D:219:GLU:CG	1:D:219:GLU:O	2.59	0.51
1:B:236:TYR:OH	1:C:219:GLU:OE1	2.28	0.50
1:C:239:LEU:CD1	1:C:265:ARG:NH2	2.75	0.50
1:B:93:ASN:ND2	3:B:500:HOH:O	2.45	0.50
1:C:75:SER:O	1:C:75:SER:OG	2.30	0.50
1:B:73:CYS:O	1:B:152:LYS:NZ	2.44	0.50
1:C:241:GLU:CD	3:C:316:HOH:O	2.51	0.49
1:A:199:GLN:CG	1:A:199:GLN:O	2.60	0.49
1:D:195:GLN:OE1	3:D:766:HOH:O	2.17	0.49
1:B:245:LYS:NZ	3:B:658:HOH:O	2.46	0.49
1:A:78:THR:CG2	1:A:79:ALA:N	2.76	0.48
1:B:78:THR:CG2	1:B:79:ALA:N	2.76	0.48
1:B:214:LYS:CE	1:B:216:PHE:CE2	2.96	0.47
1:A:125:LYS:NZ	3:A:769:HOH:O	2.47	0.47

*Continued on next page...*

Continued from previous page...

Atom-1	Atom-2	Distance(Å)	Clash(Å)
1:A:241:GLU:CD	3:A:320:HOH:O	2.53	0.47
1:C:78:THR:CG2	1:C:79:ALA:N	2.77	0.47
1:C:110:GLN:OE1	1:C:265:ARG:NH2	2.48	0.47
1:A:219:GLU:OE1	1:D:236:TYR:OH	2.33	0.46
1:C:145:ALA:N	3:C:758:HOH:O	2.49	0.46
1:C:199:GLN:O	1:C:199:GLN:CG	2.64	0.45
1:C:88:THR:CG2	1:C:89:PRO:CD	2.95	0.45
1:A:174:ASP:OD2	3:A:592:HOH:O	2.20	0.44
1:C:198:TYR:O	1:C:199:GLN:CB	2.67	0.43
1:A:236:TYR:OH	1:D:219:GLU:OE1	2.36	0.42
1:C:219:GLU:CD	3:C:764:HOH:O	2.55	0.42
1:A:72:GLU:CB	1:A:93:ASN:ND2	2.83	0.41
1:A:198:TYR:O	1:A:199:GLN:CB	2.67	0.41
1:A:74:GLU:C	1:A:76:LEU:N	2.74	0.41
1:B:132:HIS:CD2	3:B:395:HOH:O	2.74	0.41
1:B:121:GLU:OE2	1:B:258:ARG:NH1	2.55	0.40

There are no symmetry-related clashes.

## 5.3 Torsion angles

### 5.3.1 Protein backbone ⓘ

In the following table, the Percentiles column shows the percent Ramachandran outliers of the chain as a percentile score with respect to all X-ray entries followed by that with respect to entries of similar resolution. The Analysed column shows the number of residues for which the backbone conformation was analysed, and the total number of residues.

Mol	Chain	Analysed	Favoured	Allowed	Outliers	Percentiles	
1	A	212/214 (99%)	203 (96%)	8 (4%)	1 (0%)	38	23
1	B	213/214 (100%)	205 (96%)	8 (4%)	0	100	100
1	C	213/214 (100%)	204 (96%)	9 (4%)	0	100	100
1	D	213/214 (100%)	207 (97%)	6 (3%)	0	100	100
All	All	851/856 (99%)	819 (96%)	31 (4%)	1 (0%)	59	48

All (1) Ramachandran outliers are listed below:

Mol	Chain	Res	Type
1	A	93	ASN

### 5.3.2 Protein sidechains ⓘ

In the following table, the Percentiles column shows the percent sidechain outliers of the chain as a percentile score with respect to all X-ray entries followed by that with respect to entries of similar resolution. The Analysed column shows the number of residues for which the sidechain conformation was analysed, and the total number of residues.

Mol	Chain	Analysed	Rotameric	Outliers	Percentiles	
1	A	186/186 (100%)	176 (95%)	10 (5%)	31	17
1	B	187/186 (100%)	180 (96%)	7 (4%)	45	32
1	C	187/186 (100%)	176 (94%)	11 (6%)	28	14
1	D	187/186 (100%)	176 (94%)	11 (6%)	28	14
All	All	747/744 (100%)	708 (95%)	39 (5%)	32	19

All (39) residues with a non-rotameric sidechain are listed below:

Mol	Chain	Res	Type
1	A	78	THR
1	A	88	THR
1	A	107	LEU
1	A	152	LYS
1	A	157	LEU
1	A	167	LEU
1	A	211	ARG
1	A	219	GLU
1	A	225	LYS
1	A	258	ARG
1	B	78	THR
1	B	88	THR
1	B	107	LEU
1	B	114	VAL
1	B	167	LEU
1	B	219	GLU
1	B	258	ARG
1	C	78	THR
1	C	91	SER
1	C	92	ASP
1	C	101	PHE
1	C	114	VAL
1	C	152	LYS
1	C	167	LEU
1	C	177	LYS
1	C	211	ARG

*Continued on next page...*

*Continued from previous page...*

Mol	Chain	Res	Type
1	C	219	GLU
1	C	265	ARG
1	D	60	LYS
1	D	78	THR
1	D	101	PHE
1	D	116	SER
1	D	152	LYS
1	D	162	ASN
1	D	167	LEU
1	D	211	ARG
1	D	214	LYS
1	D	219	GLU
1	D	258	ARG

Some sidechains can be flipped to improve hydrogen bonding and reduce clashes. There are no such sidechains identified.

### 5.3.3 RNA ⓘ

There are no RNA chains in this entry.

## 5.4 Non-standard residues in protein, DNA, RNA chains ⓘ

There are no non-standard protein/DNA/RNA residues in this entry.

## 5.5 Carbohydrates ⓘ

There are no carbohydrates in this entry.

## 5.6 Ligand geometry ⓘ

2 ligands are modelled in this entry.

In the following table, the Counts columns list the number of bonds (or angles) for which Mogul statistics could be retrieved, the number of bonds (or angles) that are observed in the model and the number of bonds (or angles) that are defined in the chemical component dictionary. The Link column lists molecule types, if any, to which the group is linked. The Z score for a bond length (or angle) is the number of standard deviations the observed value is removed from the expected value. A bond length (or angle) with  $|Z| > 2$  is considered an outlier worth inspection. RMSZ is the root-mean-square of all Z scores of the bond lengths (or angles).

Mol	Type	Chain	Res	Link	Bond lengths			Bond angles		
					Counts	RMSZ	# Z  > 2	Counts	RMSZ	# Z  > 2
2	TAU	A	1	-	6,6,6	1.86	3 (50%)	8,8,8	3.96	6 (75%)
2	TAU	C	1	-	6,6,6	2.38	3 (50%)	8,8,8	3.74	6 (75%)

In the following table, the Chirals column lists the number of chiral outliers, the number of chiral centers analysed, the number of these observed in the model and the number defined in the chemical component dictionary. Similar counts are reported in the Torsion and Rings columns. '-' means no outliers of that kind were identified.

Mol	Type	Chain	Res	Link	Chirals	Torsions	Rings
2	TAU	A	1	-	-	0/4/4/4	0/0/0/0
2	TAU	C	1	-	-	0/4/4/4	0/0/0/0

All (6) bond length outliers are listed below:

Mol	Chain	Res	Type	Atoms	Z	Observed(Å)	Ideal(Å)
2	C	1	TAU	O2-S	-3.89	1.36	1.46
2	C	1	TAU	O3-S	-3.26	1.34	1.45
2	A	1	TAU	O2-S	-2.86	1.39	1.46
2	A	1	TAU	O1-S	-2.72	1.36	1.45
2	C	1	TAU	O1-S	-2.65	1.36	1.45
2	A	1	TAU	O3-S	-2.13	1.38	1.45

All (12) bond angle outliers are listed below:

Mol	Chain	Res	Type	Atoms	Z	Observed(°)	Ideal(°)
2	A	1	TAU	O1-S-C2	8.01	113.67	106.81
2	C	1	TAU	O1-S-C2	7.63	113.34	106.81
2	C	1	TAU	C2-C1-N1	4.28	119.65	112.16
2	A	1	TAU	O3-S-C2	-4.07	103.32	106.81
2	C	1	TAU	O3-S-C2	3.80	110.06	106.81
2	A	1	TAU	C1-C2-S	3.67	125.57	113.02
2	A	1	TAU	O2-S-C2	3.46	110.31	105.93
2	A	1	TAU	C2-C1-N1	3.15	117.67	112.16
2	A	1	TAU	O2-S-O3	-3.01	105.27	111.78
2	C	1	TAU	O2-S-O1	-2.91	105.48	111.78
2	C	1	TAU	C1-C2-S	2.34	121.03	113.02
2	C	1	TAU	O2-S-C2	2.21	108.72	105.93

There are no chirality outliers.

There are no torsion outliers.

There are no ring outliers.

## 5.7 Other polymers ⓘ

There are no such residues in this entry.

## 5.8 Polymer linkage issues

There are no chain breaks in this entry.

## 6 Fit of model and data ⓘ

### 6.1 Protein, DNA and RNA chains ⓘ

In the following table, the column labelled ‘#RSRZ> 2’ contains the number (and percentage) of RSRZ outliers, followed by percent RSRZ outliers for the chain as percentile scores relative to all X-ray entries and entries of similar resolution. The OWAB column contains the minimum, median, 95<sup>th</sup> percentile and maximum values of the occupancy-weighted average B-factor per residue. The column labelled ‘Q< 0.9’ lists the number of (and percentage) of residues with an average occupancy less than 0.9.

Mol	Chain	Analysed	<RSRZ>	#RSRZ>2	OWAB(Å <sup>2</sup> )	Q<0.9
1	A	214/214 (100%)	0.28	13 (6%) 21 20	12, 22, 63, 185	0
1	B	214/214 (100%)	0.20	10 (4%) 30 30	13, 23, 47, 170	0
1	C	214/214 (100%)	0.26	13 (6%) 21 20	11, 22, 64, 178	0
1	D	214/214 (100%)	0.14	10 (4%) 30 30	13, 22, 54, 144	0
All	All	856/856 (100%)	0.22	46 (5%) 25 25	11, 22, 57, 185	0

All (46) RSRZ outliers are listed below:

Mol	Chain	Res	Type	RSRZ
1	A	78	THR	15.4
1	C	77	SER	14.9
1	C	76	LEU	12.2
1	A	77	SER	11.2
1	B	267	ALA	10.6
1	A	76	LEU	9.8
1	C	75	SER	8.6
1	B	76	LEU	8.4
1	A	92	ASP	7.3
1	A	75	SER	6.7
1	D	76	LEU	6.6
1	C	78	THR	6.5
1	D	267	ALA	6.3
1	C	267	ALA	6.3
1	B	77	SER	6.0
1	D	75	SER	5.9
1	B	75	SER	5.9
1	B	146	GLY	5.7
1	C	90	SER	5.4
1	D	78	THR	5.4
1	B	78	THR	5.2

*Continued on next page...*



*Continued from previous page...*

Mol	Chain	Res	Type	RSRZ
1	D	77	SER	5.2
1	B	74	GLU	4.6
1	A	74	GLU	4.5
1	D	145	ALA	4.1
1	C	266	ASN	3.6
1	B	145	ALA	3.4
1	D	74	GLU	3.3
1	A	91	SER	3.3
1	C	79	ALA	3.1
1	A	89	PRO	3.0
1	C	74	GLU	2.8
1	A	57	HIS	2.7
1	C	113	SER	2.6
1	A	267	ALA	2.5
1	D	146	GLY	2.5
1	A	146	GLY	2.5
1	B	266	ASN	2.4
1	C	265	ARG	2.4
1	C	89	PRO	2.4
1	A	266	ASN	2.3
1	A	93	ASN	2.2
1	D	266	ASN	2.2
1	D	73	CYS	2.2
1	C	116	SER	2.2
1	B	79	ALA	2.1

## 6.2 Non-standard residues in protein, DNA, RNA chains ⓘ

There are no non-standard protein/DNA/RNA residues in this entry.

## 6.3 Carbohydrates ⓘ

There are no carbohydrates in this entry.

## 6.4 Ligands ⓘ

In the following table, the Atoms column lists the number of modelled atoms in the group and the number defined in the chemical component dictionary. LLDF column lists the quality of electron density of the group with respect to its neighbouring residues in protein, DNA or RNA chains. The B-factors column lists the minimum, median, 95<sup>th</sup> percentile and maximum values of B factors

of atoms in the group. The column labelled 'Q < 0.9' lists the number of atoms with occupancy less than 0.9.

Mol	Type	Chain	Res	Atoms	RSR	LLDF	B-factors( $\text{\AA}^2$ )	Q<0.9
2	TAU	C	1	7/7	0.17	4.71	35,35,35,35	0
2	TAU	A	1	7/7	0.14	2.10	36,36,36,36	0

## 6.5 Other polymers ⓘ

There are no such residues in this entry.