



Full wwPDB X-ray Structure Validation Report

Nov 7, 2014 – 12:46 PM EST

PDB ID : 3V0N
Title : Crystal structure of the Fucosylgalactoside alpha N-acetylgalactosaminyl transferase(GTA, cisAB mutant L266G, G268A) in complex with a novel UDP-GalNAc derived inhibitor (3GW and 4GW)
Authors : Palcic, M.M.; Jorgensen, R.
Deposited on : 2011-12-08
Resolution : 1.75 Å(reported)

This is a full wwPDB validation report for a publicly released PDB entry.
We welcome your comments at validation@mail.wwpdb.org
A user guide is available at <http://wwpdb.org/ValidationPDFNotes.html>

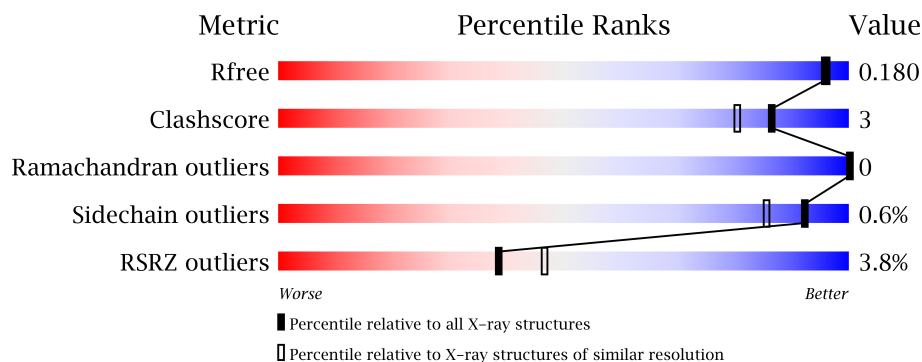
The following versions of software and data (see [references](#)) were used in the production of this report:

MolProbity : 4.02b-467
Mogul : 1.16 November 2013
Xtriage (Phenix) : dev-1439
EDS : stable24103
Percentile statistics : 21963
Refmac : 5.8.0049
CCP4 : 6.1.3
Ideal geometry (proteins) : Engh & Huber (2001)
Ideal geometry (DNA, RNA) : Parkinson et. al. (1996)
Validation Pipeline (wwPDB-VP) : stable24103

1 Overall quality at a glance

The reported resolution of this entry is 1.75 Å.

Percentile scores (ranging between 0-100) for global validation metrics of the entry are shown in the following graphic. The table shows the number of entries on which the scores are based.



Metric	Whole archive (#Entries)	Similar resolution (#Entries, resolution range(Å))
R_{free}	66092	1134 (1.76-1.76)
Clashscore	79885	1304 (1.76-1.76)
Ramachandran outliers	78287	1288 (1.76-1.76)
Sidechain outliers	78261	1288 (1.76-1.76)
RSRZ outliers	66119	1135 (1.76-1.76)

The table below summarises the geometric issues observed across the polymeric chains and their fit to the electron density. The red, orange, yellow and green segments on the lower bar indicate the fraction of residues that contain outliers for ≥ 3 , 2, 1 and 0 types of geometric quality criteria. The upper red bar (where present) indicates the fraction of residues that have poor fit to the electron density.

Mol	Chain	Length	Quality of chain
1	A	298	
1	B	298	

The following table lists non-polymeric compounds that are outliers for geometric or electron-density-fit criteria:

Mol	Type	Chain	Res	Geometry	Electron density
4	GOL	B	404[A]	-	X
4	GOL	B	404[B]	-	X

2 Entry composition

There are 7 unique types of molecules in this entry. The entry contains 5458 atoms, of which 0 are hydrogen and 0 are deuterium.

In the tables below, the ZeroOcc column contains the number of atoms modelled with zero occupancy, the AltConf column contains the number of residues with at least one atom in alternate conformation and the Trace column contains the number of residues modelled with at most 2 atoms.

- Molecule 1 is a protein called Histo-blood group ABO system transferase.

Mol	Chain	Residues	Atoms					ZeroOcc	AltConf	Trace
1	A	288	Total	C	N	O	S	0	7	0
			2396	1558	409	415	14			
1	B	288	Total	C	N	O	S	0	2	0
			2371	1538	407	413	13			

There are 18 discrepancies between the modelled and reference sequences:

Chain	Residue	Modelled	Actual	Comment	Reference
A	57	MET	-	EXPRESSION TAG	UNP P16442
A	58	ALA	-	EXPRESSION TAG	UNP P16442
A	59	ILE	-	EXPRESSION TAG	UNP P16442
A	60	GLY	-	EXPRESSION TAG	UNP P16442
A	61	GLU	-	EXPRESSION TAG	UNP P16442
A	62	PHE	-	EXPRESSION TAG	UNP P16442
A	63	MET	-	EXPRESSION TAG	UNP P16442
A	266	GLY	LEU	ENGINEERED MUTATION	UNP P16442
A	268	ALA	GLY	ENGINEERED MUTATION	UNP P16442
B	57	MET	-	EXPRESSION TAG	UNP P16442
B	58	ALA	-	EXPRESSION TAG	UNP P16442
B	59	ILE	-	EXPRESSION TAG	UNP P16442
B	60	GLY	-	EXPRESSION TAG	UNP P16442
B	61	GLU	-	EXPRESSION TAG	UNP P16442
B	62	PHE	-	EXPRESSION TAG	UNP P16442
B	63	MET	-	EXPRESSION TAG	UNP P16442
B	266	GLY	LEU	ENGINEERED MUTATION	UNP P16442
B	268	ALA	GLY	ENGINEERED MUTATION	UNP P16442

- Molecule 2 is MANGANESE (II) ION (three-letter code: MN) (formula: Mn).

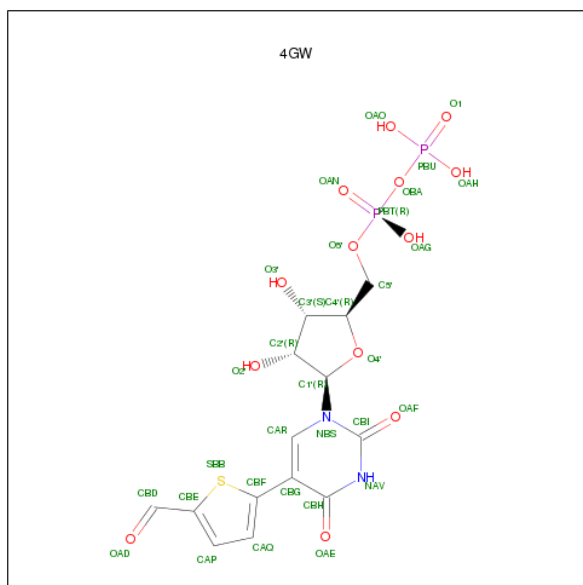
Mol	Chain	Residues	Atoms		ZeroOcc	AltConf
2	B	1	Total	Mn	0	0
			1	1		

Continued on next page...

Continued from previous page...

Mol	Chain	Residues	Atoms		ZeroOcc	AltConf
2	A	1	Total	Mn	0	0
			1	1		

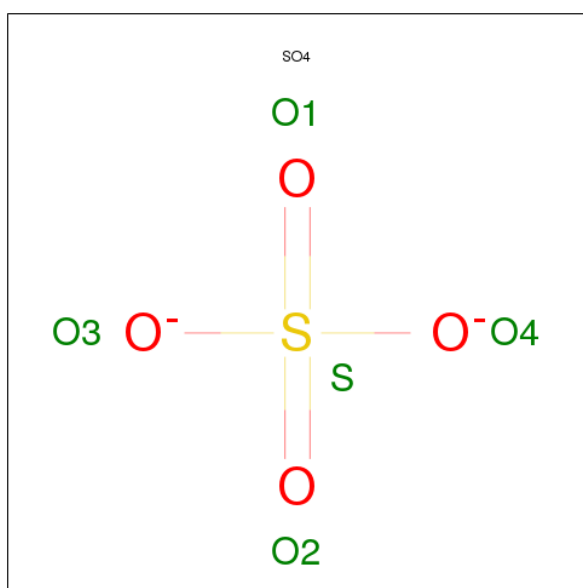
- Molecule 3 is 5-(5-FORMYLTHIOPHEN-2-YL)URIDINE5'-(TRIHYDROGEN DIPHOSPHATE) (three-letter code: 4GW) (formula: $C_{14}H_{16}N_2O_{13}P_2S$).





Mol	Chain	Residues	Atoms			ZeroOcc	AltConf
4	A	1	Total	C	O	0	0
			6	3	3		
4	B	1	Total	C	O	0	1
			12	6	6		

- Molecule 5 is SULFATE ION (three-letter code: SO4) (formula: O₄S).



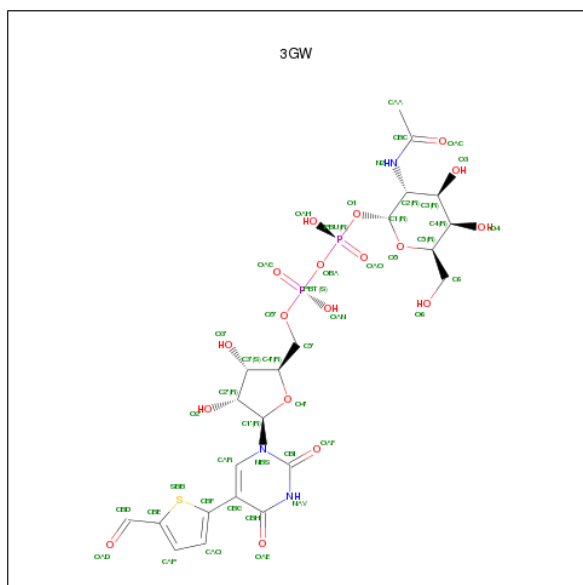
Mol	Chain	Residues	Atoms			ZeroOcc	AltConf
5	A	1	Total	O	S	0	0
			5	4	1		
5	A	1	Total	O	S	0	0
			5	4	1		

Continued on next page...

Continued from previous page...

Mol	Chain	Residues	Atoms			ZeroOcc	AltConf
5	B	1	Total	O	S	0	0
			5	4	1		

- Molecule 6 is 5-(5-FORMYLTHIOPHEN-2-YL)URIDINE-5'-(2-(ACETYLAMINO)-2-DEOXY-ALPHA-D-GALACTOSYL)-DIPHOSPHATE (three-letter code: 3GW) (formula: $C_{22}H_{29}N_3O_{18}P_2S$).



Mol	Chain	Residues	Atoms						ZeroOcc	AltConf
6	B	1	Total	C	N	O	P	S	0	1
			46	22	3	18	2	1		

- Molecule 7 is water.

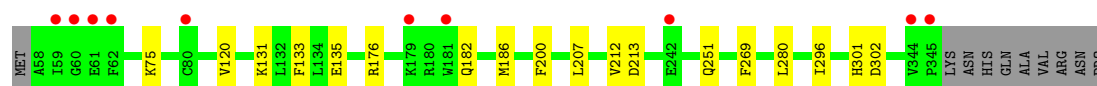
Mol	Chain	Residues	Atoms		ZeroOcc	AltConf
7	A	258	Total	O	0	0
			258	258		
7	B	288	Total	O	0	2
			288	288		

3 Residue-property plots

These plots are drawn for all protein, RNA and DNA chains in the entry. The first graphic for a chain summarises the proportions of errors displayed in the second graphic. The second graphic shows the sequence view annotated by issues in geometry and electron density. Residues are color-coded according to the number of geometric quality criteria for which they contain at least one outlier: green = 0, yellow = 1, orange = 2 and red = 3 or more. A red dot above a residue indicates a poor fit to the electron density ($RSRZ > 2$). Stretches of 2 or more consecutive residues without any outlier are shown as a green connector. Residues present in the sample, but not in the model, are shown in grey.

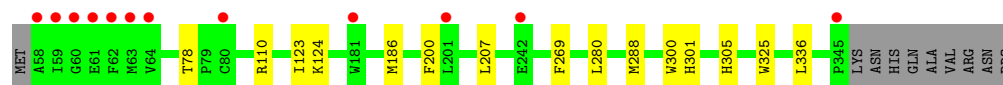
- Molecule 1: Histo-blood group ABO system transferase

Chain A: 



- Molecule 1: Histo-blood group ABO system transferase

Chain B: 



4 Data and refinement statistics

Property	Value	Source
Space group	P 21 21 2	Depositor
Cell constants a, b, c, α , β , γ	78.20Å 153.83Å 52.40Å 90.00° 90.00° 90.00°	Depositor
Resolution (Å)	29.02 – 1.75 29.02 – 1.75	Depositor EDS
% Data completeness (in resolution range)	100.0 (29.02-1.75) 100.0 (29.02-1.75)	Depositor EDS
R_{merge}	0.07	Depositor
R_{sym}	(Not available)	Depositor
$\langle I/\sigma(I) \rangle$ ¹	3.04 (at 1.75Å)	Xtriage
Refinement program	PHENIX (phenix.refine: 1.7.1_743)	Depositor
R, R_{free}	0.157 , 0.184 0.152 , 0.180	Depositor DCC
R_{free} test set	2583 reflections (4.00%)	DCC
Wilson B-factor (Å ²)	18.4	Xtriage
Anisotropy	0.424	Xtriage
Bulk solvent k_{sol} (e/Å ³), B_{sol} (Å ²)	0.39 , 42.9	EDS
Estimated twinning fraction	No twinning to report.	Xtriage
L-test for twinning	$\langle L \rangle = 0.48$, $\langle L^2 \rangle = 0.31$	Xtriage
Outliers	1 of 64658 reflections (0.002%)	Xtriage
F_o, F_c correlation	0.97	EDS
Total number of atoms	5458	wwPDB-VP
Average B, all atoms (Å ²)	22.0	wwPDB-VP

Xtriage's analysis on translational NCS is as follows: *The largest off-origin peak in the Patterson function is 4.70% of the height of the origin peak. No significant pseudotranslation is detected.*

¹Intensities estimated from amplitudes.

5 Model quality

5.1 Standard geometry

Bond lengths and bond angles in the following residue types are not validated in this section: GOL, MN, 4GW, 3GW, SO4

The Z score for a bond length (or angle) is the number of standard deviations the observed value is removed from the expected value. A bond length (or angle) with $|Z| > 5$ is considered an outlier worth inspection. RMSZ is the root-mean-square of all Z scores of the bond lengths (or angles).

Mol	Chain	Bond lengths		Bond angles	
		RMSZ	$\# Z > 5$	RMSZ	$\# Z > 5$
1	A	0.50	0/2484	0.60	1/3371 (0.0%)
1	B	0.47	0/2444	0.60	0/3317
All	All	0.48	0/4928	0.60	1/6688 (0.0%)

There are no bond length outliers.

All (1) bond angle outliers are listed below:

Mol	Chain	Res	Type	Atoms	Z	Observed(°)	Ideal(°)
1	A	213	ASP	CB-CG-OD2	5.56	123.31	118.30

There are no chirality outliers.

There are no planarity outliers.

5.2 Close contacts

In the following table, the Non-H and H(model) columns list the number of non-hydrogen atoms and hydrogen atoms in the chain respectively. The H(added) column lists the number of hydrogens added by MolProbity. The Clashes column lists the number of clashes within the asymmetric unit, and the number in parentheses is this value normalized per 1000 atoms of the molecule in the chain. The Symm-Clashes column gives symmetry related clashes, in the same way as for the Clashes column.

Mol	Chain	Non-H	H(model)	H(added)	Clashes	Symm-Clashes
1	A	2396	0	2400	12	0
1	B	2371	0	2357	11	0
2	A	1	0	0	0	0
2	B	1	0	0	0	0
3	A	32	0	13	0	0
3	B	32	0	13	0	0

Continued on next page...

Continued from previous page...

Mol	Chain	Non-H	H(model)	H(added)	Clashes	Symm-Clashes
4	A	6	0	8	0	0
4	B	12	0	16	4	0
5	A	10	0	0	1	0
5	B	5	0	0	0	0
6	B	46	0	26	1	0
7	A	258	0	0	0	0
7	B	288	0	0	1	0
All	All	5458	0	4833	25	0

Clashscore is defined as the number of clashes calculated for the entry per 1000 atoms (including hydrogens) of the entry. The overall clashscore for this entry is 3.

All (25) close contacts within the same asymmetric unit are listed below.

Atom-1	Atom-2	Distance(Å)	Clash(Å)
1:A:75:LYS:HE2	1:A:75:LYS:HA	1.63	0.81
1:A:131:LYS:NZ	1:A:135:GLU:OE1	2.28	0.66
1:B:200:PHE:CD2	1:B:207:LEU:HD11	2.38	0.59
1:A:120[B]:VAL:HG11	1:A:133:PHE:CZ	2.39	0.57
1:A:120[A]:VAL:HG22	1:A:212:VAL:HB	1.88	0.56
1:A:182:GLN:O	1:A:186[B]:MET:HG3	2.06	0.55
1:B:325:TRP:CZ3	1:B:336:LEU:HD11	2.46	0.50
1:B:123:ILE:HG22	1:B:124:LYS:HG3	1.94	0.50
1:B:78:THR:HG22	1:B:78:THR:O	2.12	0.49
1:A:120[A]:VAL:HG21	1:A:212:VAL:HG23	1.97	0.47
1:B:325:TRP:CE3	1:B:336:LEU:HD11	2.51	0.46
6:B:402[A]:3GW:O4	4:B:404[A]:GOL:O2	2.35	0.45
1:B:280:LEU:HD23	1:B:280:LEU:C	2.38	0.45
1:A:251:GLN:HB3	1:A:296[B]:ILE:HD11	1.99	0.44
1:B:300:TRP:CD2	4:B:404[A]:GOL:H2	2.53	0.44
1:B:300:TRP:CE3	4:B:404[B]:GOL:H32	2.53	0.43
4:B:404[A]:GOL:H32	7:B:739:HOH:O	2.17	0.43
1:B:110:ARG:HD2	1:B:110:ARG:HA	1.86	0.43
1:A:186[B]:MET:CG	1:A:301:HIS:HB3	2.49	0.43
1:A:176:ARG:NH2	5:A:405:SO4:O2	2.46	0.42
1:A:186[B]:MET:HG2	1:A:301:HIS:HB3	2.02	0.41
1:A:200:PHE:CD2	1:A:207:LEU:HD11	2.56	0.40
1:B:288:MET:HG2	1:B:305:HIS:CD2	2.57	0.40
1:B:186:MET:HG3	1:B:301:HIS:HB3	2.04	0.40
1:A:280:LEU:HD23	1:A:280:LEU:C	2.41	0.40

There are no symmetry-related clashes.

5.3 Torsion angles

5.3.1 Protein backbone

In the following table, the Percentiles column shows the percent Ramachandran outliers of the chain as a percentile score with respect to all X-ray entries followed by that with respect to entries of similar resolution.

The Analysed column shows the number of residues for which the backbone conformation was analysed, and the total number of residues.

Mol	Chain	Analysed	Favoured	Allowed	Outliers	Percentiles	
1	A	293/298 (98%)	285 (97%)	8 (3%)	0	100	100
1	B	288/298 (97%)	281 (98%)	7 (2%)	0	100	100
All	All	581/596 (98%)	566 (97%)	15 (3%)	0	100	100

There are no Ramachandran outliers to report.

5.3.2 Protein sidechains

In the following table, the Percentiles column shows the percent sidechain outliers of the chain as a percentile score with respect to all X-ray entries followed by that with respect to entries of similar resolution. The Analysed column shows the number of residues for which the sidechain conformation was analysed, and the total number of residues.

Mol	Chain	Analysed	Rotameric	Outliers	Percentiles	
1	A	261/263 (99%)	259 (99%)	2 (1%)	89	80
1	B	256/263 (97%)	255 (100%)	1 (0%)	95	91
All	All	517/526 (98%)	514 (99%)	3 (1%)	92	85

All (3) residues with a non-rotameric sidechain are listed below:

Mol	Chain	Res	Type
1	A	269	PHE
1	A	302	ASP
1	B	269	PHE

Some sidechains can be flipped to improve hydrogen bonding and reduce clashes. All (2) such sidechains are listed below:

Mol	Chain	Res	Type
1	A	286	GLN

Continued on next page...

Continued from previous page...

Mol	Chain	Res	Type
1	B	253	GLN

5.3.3 RNA ⓘ

There are no RNA chains in this entry.

5.4 Non-standard residues in protein, DNA, RNA chains ⓘ

There are no non-standard protein/DNA/RNA residues in this entry.

5.5 Carbohydrates ⓘ

There are no carbohydrates in this entry.

5.6 Ligand geometry ⓘ

Of 11 ligands modelled in this entry, 2 are monoatomic - leaving 9 for Mogul analysis.

In the following table, the Counts columns list the number of bonds (or angles) for which Mogul statistics could be retrieved, the number of bonds (or angles) that are observed in the model and the number of bonds (or angles) that are defined in the chemical component dictionary. The Link column lists molecule types, if any, to which the group is linked. The Z score for a bond length (or angle) is the number of standard deviations the observed value is removed from the expected value. A bond length (or angle) with $|Z| > 2$ is considered an outlier worth inspection. RMSZ is the root-mean-square of all Z scores of the bond lengths (or angles).

Mol	Type	Chain	Res	Link	Bond lengths			Bond angles		
					Counts	RMSZ	$\# Z > 2$	Counts	RMSZ	$\# Z > 2$
3	4GW	A	402	2	34,34,34	2.33	11 (32%)	48,52,52	2.50	10 (20%)
4	GOL	A	403	-	5,5,5	0.30	0	5,5,5	0.50	0
5	SO4	A	404	-	4,4,4	0.12	0	6,6,6	0.17	0
5	SO4	A	405	-	4,4,4	0.23	0	6,6,6	0.10	0
6	3GW	B	402[A]	2	49,49,49	2.51	19 (38%)	70,74,74	2.71	17 (24%)
3	4GW	B	403[B]	2	34,34,34	2.51	13 (38%)	48,52,52	2.70	12 (25%)
4	GOL	B	404[A]	-	5,5,5	0.33	0	5,5,5	0.49	0
4	GOL	B	404[B]	-	5,5,5	0.36	0	5,5,5	0.22	0
5	SO4	B	405	-	4,4,4	0.20	0	6,6,6	0.12	0

In the following table, the Chirals column lists the number of chiral outliers, the number of chiral centers analysed, the number of these observed in the model and the number defined in the chemical

component dictionary. Similar counts are reported in the Torsion and Rings columns. '-' means no outliers of that kind were identified.

Mol	Type	Chain	Res	Link	Chirals	Torsions	Rings
3	4GW	A	402	2	-	0/16/38/38	0/3/3/3
4	GOL	A	403	-	-	0/4/4/4	0/0/0/0
5	SO4	A	404	-	-	0/0/0/0	0/0/0/0
5	SO4	A	405	-	-	0/0/0/0	0/0/0/0
6	3GW	B	402[A]	2	-	0/27/69/69	0/4/4/4
3	4GW	B	403[B]	2	-	0/16/38/38	0/3/3/3
4	GOL	B	404[A]	-	-	0/4/4/4	0/0/0/0
4	GOL	B	404[B]	-	-	0/4/4/4	0/0/0/0
5	SO4	B	405	-	-	0/0/0/0	0/0/0/0

All (43) bond length outliers are listed below:

Mol	Chain	Res	Type	Atoms	Z	Observed(Å)	Ideal(Å)
6	B	402[A]	3GW	O4'-C1'	6.27	1.49	1.41
3	B	403[B]	4GW	O4'-C1'	6.08	1.48	1.41
6	B	402[A]	3GW	OAD-CBD	5.99	1.40	1.21
3	A	402	4GW	OAE-CBH	5.86	1.38	1.24
3	B	403[B]	4GW	OAE-CBH	5.80	1.38	1.24
6	B	402[A]	3GW	CBE-CBD	5.72	1.55	1.48
3	A	402	4GW	O4'-C1'	5.30	1.47	1.41
3	B	403[B]	4GW	OAD-CBD	5.29	1.38	1.21
6	B	402[A]	3GW	OAE-CBH	5.20	1.36	1.24
3	A	402	4GW	OAD-CBD	5.16	1.38	1.21
6	B	402[A]	3GW	O5-C1	5.04	1.54	1.41
3	B	403[B]	4GW	CBE-SBB	-4.91	1.69	1.75
6	B	402[A]	3GW	CBE-SBB	-4.57	1.69	1.75
3	A	402	4GW	CBE-SBB	-4.35	1.69	1.75
3	A	402	4GW	C2'-C1'	-4.05	1.47	1.53
3	B	403[B]	4GW	CBI-NBS	-3.76	1.34	1.38
3	B	403[B]	4GW	C2'-C1'	-3.65	1.48	1.53
6	B	402[A]	3GW	CBI-NBS	-3.64	1.34	1.38
6	B	402[A]	3GW	C2-N2	3.64	1.51	1.45
6	B	402[A]	3GW	CBC-N2	3.11	1.46	1.34
3	B	403[B]	4GW	CBG-CBF	3.10	1.51	1.48
3	A	402	4GW	CBI-NBS	-3.09	1.35	1.38
6	B	402[A]	3GW	C3-C2	-3.05	1.46	1.53
6	B	402[A]	3GW	O1-C1	-3.01	1.36	1.42
6	B	402[A]	3GW	C2'-C1'	-2.93	1.49	1.53
3	B	403[B]	4GW	CBF-SBB	-2.89	1.70	1.73
3	B	403[B]	4GW	PBU-OBA	-2.71	1.55	1.60
6	B	402[A]	3GW	O3'-C3'	-2.67	1.36	1.43

Continued on next page...

Continued from previous page...

Mol	Chain	Res	Type	Atoms	Z	Observed(Å)	Ideal(Å)
3	B	403[B]	4GW	O3'-C3'	-2.52	1.36	1.43
3	A	402	4GW	CBF-SBB	-2.44	1.71	1.73
3	A	402	4GW	O3'-C3'	-2.37	1.37	1.43
6	B	402[A]	3GW	CAA-CBC	-2.36	1.45	1.50
3	A	402	4GW	CBG-CBF	2.34	1.50	1.48
3	A	402	4GW	O4'-C4'	-2.28	1.39	1.45
6	B	402[A]	3GW	O2'-C2'	-2.28	1.37	1.43
3	B	403[B]	4GW	PBT-OBA	-2.28	1.55	1.59
6	B	402[A]	3GW	CBF-SBB	-2.20	1.71	1.73
3	B	403[B]	4GW	CBH-CBG	-2.19	1.39	1.44
3	B	403[B]	4GW	C2'-C3'	-2.16	1.47	1.53
6	B	402[A]	3GW	C5'-C4'	-2.16	1.44	1.51
3	A	402	4GW	C2'-C3'	-2.05	1.47	1.53
6	B	402[A]	3GW	C2'-C3'	-2.05	1.47	1.53
6	B	402[A]	3GW	CBH-CBG	-2.00	1.39	1.44

All (39) bond angle outliers are listed below:

Mol	Chain	Res	Type	Atoms	Z	Observed(°)	Ideal(°)
6	B	402[A]	3GW	CAR-NBS-CBI	-11.70	119.08	122.41
3	A	402	4GW	OAD-CBD-CBE	-11.33	115.92	124.44
6	B	402[A]	3GW	OAD-CBD-CBE	-10.77	116.34	124.44
3	B	403[B]	4GW	OAD-CBD-CBE	-10.58	116.48	124.44
3	B	403[B]	4GW	CAR-NBS-CBI	-7.46	120.29	122.41
6	B	402[A]	3GW	NAV-CBI-NBS	7.01	121.82	115.97
3	A	402	4GW	NAV-CBI-NBS	6.43	121.34	115.97
3	B	403[B]	4GW	NAV-CBI-NBS	5.84	120.85	115.97
3	A	402	4GW	CBG-CBH-NAV	5.21	121.10	115.86
6	B	402[A]	3GW	CBG-CBH-NAV	5.07	120.97	115.86
6	B	402[A]	3GW	CAQ-CBF-SBB	-4.98	106.05	111.02
6	B	402[A]	3GW	CBG-CBF-SBB	4.91	128.48	116.66
3	B	403[B]	4GW	CBG-CBF-SBB	4.77	128.15	116.66
3	B	403[B]	4GW	CAQ-CBF-SBB	-4.72	106.32	111.02
3	B	403[B]	4GW	CAP-CBE-SBB	-4.45	107.03	111.03
3	A	402	4GW	CBG-CBF-SBB	4.33	127.08	116.66
3	A	402	4GW	CAQ-CBF-SBB	-4.32	106.71	111.02
3	B	403[B]	4GW	CBG-CBH-NAV	4.29	120.18	115.86
6	B	402[A]	3GW	CAP-CBE-SBB	-4.22	107.24	111.03
3	A	402	4GW	CAP-CBE-SBB	-3.82	107.60	111.03
6	B	402[A]	3GW	O5-C1-O1	-3.51	106.77	111.36
3	B	403[B]	4GW	PBT-OBA-PBU	-3.38	122.58	131.93
3	B	403[B]	4GW	CBE-SBB-CBF	3.24	98.55	92.93

Continued on next page...

Continued from previous page...

Mol	Chain	Res	Type	Atoms	Z	Observed(°)	Ideal(°)
3	A	402	4GW	CBH-NAV-CBI	-3.15	118.92	125.39
6	B	402[A]	3GW	CBE-SBB-CBF	3.14	98.37	92.93
6	B	402[A]	3GW	PBT-OBA-PBU	-2.97	123.72	131.93
6	B	402[A]	3GW	O5'-C5'-C4'	2.89	119.57	108.96
3	A	402	4GW	CBE-SBB-CBF	2.85	97.86	92.93
6	B	402[A]	3GW	C1-O5-C5	-2.80	108.32	113.73
3	B	403[B]	4GW	C4'-O4'-C1'	-2.72	106.73	109.72
6	B	402[A]	3GW	CBI-NBS-C1'	2.40	119.71	118.21
6	B	402[A]	3GW	CAA-CBC-N2	2.39	120.63	116.12
6	B	402[A]	3GW	C4'-O4'-C1'	-2.38	107.10	109.72
6	B	402[A]	3GW	CBH-NAV-CBI	-2.37	120.52	125.39
6	B	402[A]	3GW	O5-C5-C6	2.37	112.23	106.34
3	B	403[B]	4GW	O5'-C5'-C4'	2.32	117.50	108.96
3	A	402	4GW	CBG-CAR-NBS	-2.25	118.07	122.40
3	A	402	4GW	C4'-O4'-C1'	-2.15	107.35	109.72
3	B	403[B]	4GW	CBH-NAV-CBI	-2.12	121.04	125.39

There are no chirality outliers.

There are no torsion outliers.

There are no ring outliers.

5.7 Other polymers ⓘ

There are no such residues in this entry.

5.8 Polymer linkage issues

There are no chain breaks in this entry.

6 Fit of model and data ⓘ

6.1 Protein, DNA and RNA chains ⓘ

In the following table, the column labelled ‘#RSRZ> 2’ contains the number (and percentage) of RSRZ outliers, followed by percent RSRZ outliers for the chain as percentile scores relative to all X-ray entries and entries of similar resolution. The OWAB column contains the minimum, median, 95th percentile and maximum values of the occupancy-weighted average B-factor per residue. The column labelled ‘Q< 0.9’ lists the number of (and percentage) of residues with an average occupancy less than 0.9.

Mol	Chain	Analysed	<RSRZ>	#RSRZ>2		OWAB(Å ²)	Q<0.9
1	A	288/298 (96%)	-0.13	10 (3%)	42 50	9, 18, 34, 51	0
1	B	288/298 (96%)	-0.07	12 (4%)	35 42	11, 19, 38, 57	0
All	All	576/596 (96%)	-0.10	22 (3%)	38 47	9, 19, 37, 57	0

All (22) RSRZ outliers are listed below:

Mol	Chain	Res	Type	RSRZ
1	B	60	GLY	5.6
1	B	62	PHE	5.6
1	B	64	VAL	4.4
1	A	62	PHE	3.8
1	A	80	CYS	3.8
1	B	80	CYS	3.3
1	B	63	MET	3.2
1	A	181	TRP	3.1
1	B	61	GLU	2.8
1	B	201	LEU	2.8
1	A	179	LYS	2.6
1	B	59	ILE	2.5
1	B	58	ALA	2.4
1	A	60	GLY	2.4
1	B	345	PRO	2.3
1	A	345	PRO	2.3
1	A	59	ILE	2.2
1	B	242	GLU	2.1
1	A	344	VAL	2.1
1	A	61	GLU	2.1
1	B	181	TRP	2.1
1	A	242	GLU	2.0

6.2 Non-standard residues in protein, DNA, RNA chains ⓘ

There are no non-standard protein/DNA/RNA residues in this entry.

6.3 Carbohydrates ⓘ

There are no carbohydrates in this entry.

6.4 Ligands ⓘ

In the following table, the Atoms column lists the number of modelled atoms in the group and the number defined in the chemical component dictionary. LLDF column lists the quality of electron density of the group with respect to its neighbouring residues in protein, DNA or RNA chains. The B-factors column lists the minimum, median, 95th percentile and maximum values of B factors of atoms in the group. The column labelled 'Q< 0.9' lists the number of atoms with occupancy less than 0.9.

Mol	Type	Chain	Res	Atoms	RSR	LLDF	B-factors(Å ²)	Q<0.9
4	GOL	B	404[A]	6/6	0.14	4.66	33,34,34,36	6
4	GOL	B	404[B]	6/6	0.14	4.66	33,34,35,35	6
5	SO4	A	404	5/5	0.14	1.63	29,33,36,37	5
6	3GW	B	402[A]	46/46	0.13	1.50	18,23,31,34	46
4	GOL	A	403	6/6	0.10	0.51	30,32,32,32	0
3	4GW	B	403[B]	32/32	0.10	0.43	18,21,31,34	32
2	MN	B	401	1/1	0.09	0.24	32,32,32,32	0
5	SO4	B	405	5/5	0.11	0.17	49,49,49,50	5
3	4GW	A	402	32/32	0.09	-0.44	15,21,33,37	0
5	SO4	A	405	5/5	0.15	-0.69	57,58,58,59	5
2	MN	A	401	1/1	0.06	-0.89	24,24,24,24	0

6.5 Other polymers ⓘ

There are no such residues in this entry.