



# Full wwPDB X-ray Structure Validation Report

Feb 28, 2014 – 02:21 PM GMT

PDB ID : 1V1B  
Title : 2-KETO-3-DEOXYGLUCONATE KINASE FROM THERMUS THERMOPHILUS WITH BOUND ATP  
Authors : Tahirov, T.H.; Inagaki, E.  
Deposited on : 2004-04-13  
Resolution : 2.60 Å (reported)

This is a full wwPDB validation report for a publicly released PDB entry.  
We welcome your comments at [validation@mail.wwpdb.org](mailto:validation@mail.wwpdb.org)  
A user guide is available at <http://wwpdb.org/ValidationPDFNotes.html>

---

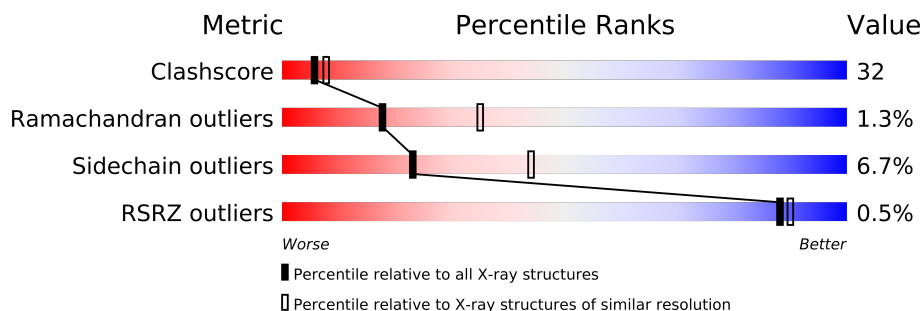
The following versions of software and data (see [references](#)) were used in the production of this report:

MolProbity : 4.02b-467  
Mogul : 1.15 2013  
Xtriage (Phenix) : dev-1323  
EDS : stable22639  
Percentile statistics : 21963  
Refmac : 5.8.0049  
CCP4 : 6.3.0 (Settle)  
Ideal geometry (proteins) : Engh & Huber (2001)  
Ideal geometry (DNA, RNA) : Parkinson et. al. (1996)  
Validation Pipeline (wwPDB-VP) : stable22683

# 1 Overall quality at a glance

The reported resolution of this entry is 2.60 Å.

Percentile scores (ranging between 0-100) for global validation metrics of the entry are shown in the following graphic. The table shows the number of entries on which the scores are based.



Metric	Whole archive (#Entries)	Similar resolution (#Entries, resolution range(Å))
Clashscore	79885	2154 (2.60-2.60)
Ramachandran outliers	78287	2113 (2.60-2.60)
Sidechain outliers	78261	2113 (2.60-2.60)
RSRZ outliers	66119	1718 (2.60-2.60)

The table below summarises the geometric issues observed across the polymeric chains and their fit to the electron density. The red, orange, yellow and green segments on the lower bar indicate the fraction of residues that contain outliers for  $\geq 3$ , 2, 1 and 0 types of geometric quality criteria. The upper red bar (where present) indicates the fraction of residues that have poor fit to the electron density.

Mol	Chain	Length	Quality of chain
1	A	309	
1	B	309	
1	C	309	
1	D	309	

The following table lists non-polymeric compounds that are outliers for geometric or electron-density-fit criteria:

Mol	Type	Chain	Res	Geometry	Electron density
2	ATP	C	1301	-	X

## 2 Entry composition i

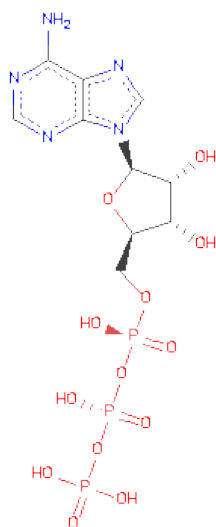
There are 3 unique types of molecules in this entry. The entry contains 9373 atoms, of which 0 are hydrogen and 0 are deuterium.

In the tables below, the ZeroOcc column contains the number of atoms modelled with zero occupancy, the AltConf column contains the number of residues with at least one atom in alternate conformation and the Trace column contains the number of residues modelled with at most 2 atoms.

- Molecule 1 is a protein called 2-KETO-3-DEOXYGLUCONATEKINASE.

Mol	Chain	Residues	Atoms					ZeroOcc	AltConf	Trace
1	A	301	Total	C	N	O	S	0	0	1
			2289	1459	409	418	3			
1	B	301	Total	C	N	O	S	0	0	1
			2289	1459	409	418	3			
1	C	301	Total	C	N	O	S	0	0	1
			2289	1459	409	418	3			
1	D	301	Total	C	N	O	S	0	0	1
			2289	1459	409	418	3			

- Molecule 2 is ADENOSINE-5'-TRIPHOSPHATE (three-letter code: ATP) (formula:  $C_{10}H_{16}N_5O_{13}P_3$ ).



Mol	Chain	Residues	Atoms					ZeroOcc	AltConf
2	A	1	Total	C	N	O	P	0	0
			31	10	5	13	3		
2	B	1	Total	C	N	O	P	0	0
			31	10	5	13	3		

*Continued on next page...*

*Continued from previous page...*

Mol	Chain	Residues	Atoms					ZeroOcc	AltConf
2	C	1	Total	C	N	O	P	0	0
			31	10	5	13	3		
2	D	1	Total	C	N	O	P	0	0
			31	10	5	13	3		

- Molecule 3 is water.

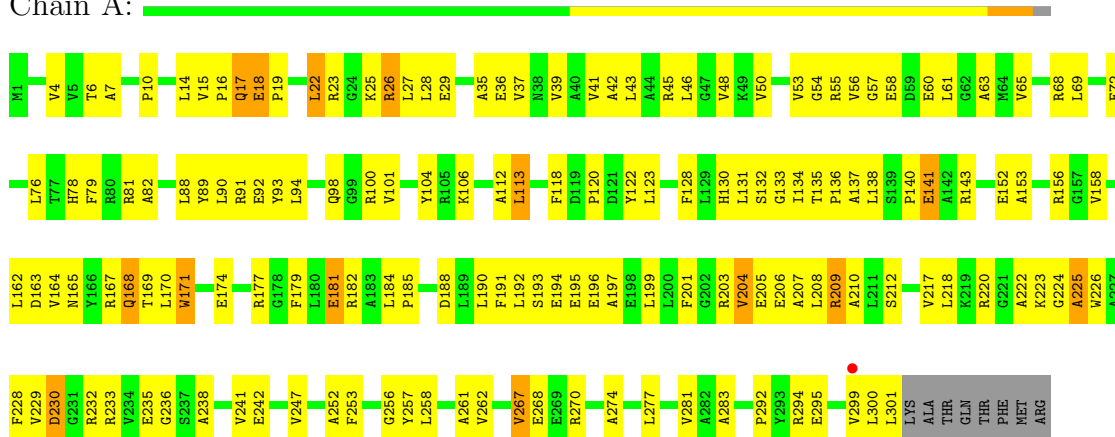
Mol	Chain	Residues	Atoms		ZeroOcc	AltConf
3	A	28	Total	O	0	0
			28	28		
3	B	30	Total	O	0	0
			30	30		
3	C	16	Total	O	0	0
			16	16		
3	D	19	Total	O	0	0
			19	19		

### 3 Residue-property plots

These plots are drawn for all protein, RNA and DNA chains in the entry. The first graphic for a chain summarises the proportions of errors displayed in the second graphic. The second graphic shows the sequence view annotated by issues in geometry and electron density. Residues are color-coded according to the number of geometric quality criteria for which they contain at least one outlier: green = 0, yellow = 1, orange = 2 and red = 3 or more. A red dot above a residue indicates a poor fit to the electron density ( $RSRZ > 2$ ). Stretches of 2 or more consecutive residues without any outlier are shown as a green connector. Residues present in the sample, but not in the model, are shown in grey.

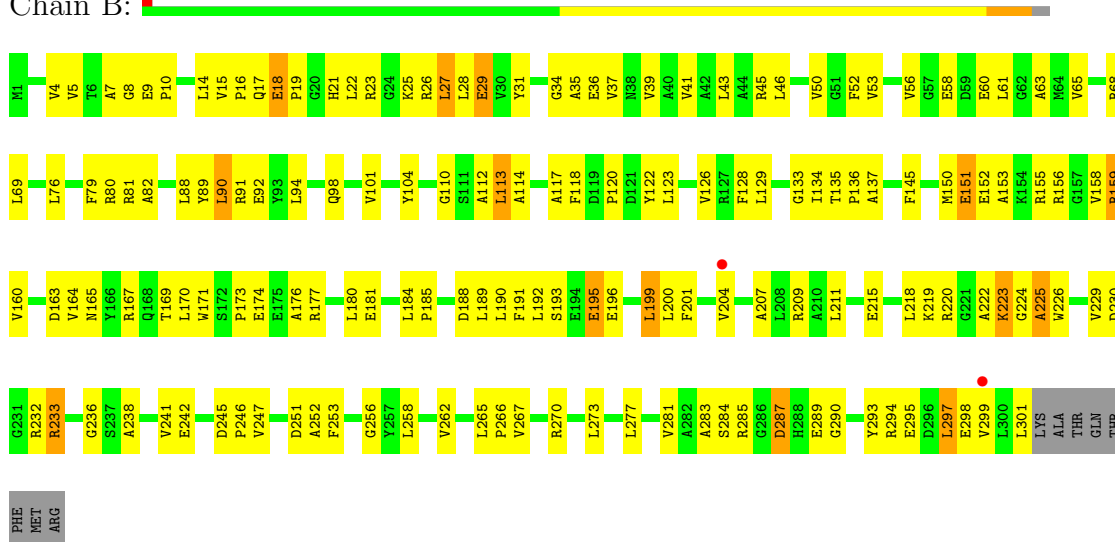
#### • Molecule 1: 2-KETO-3-DEOXYGLUCONATEKINASE

Chain A:



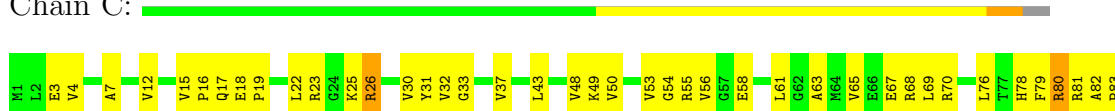
#### • Molecule 1: 2-KETO-3-DEOXYGLUCONATEKINASE

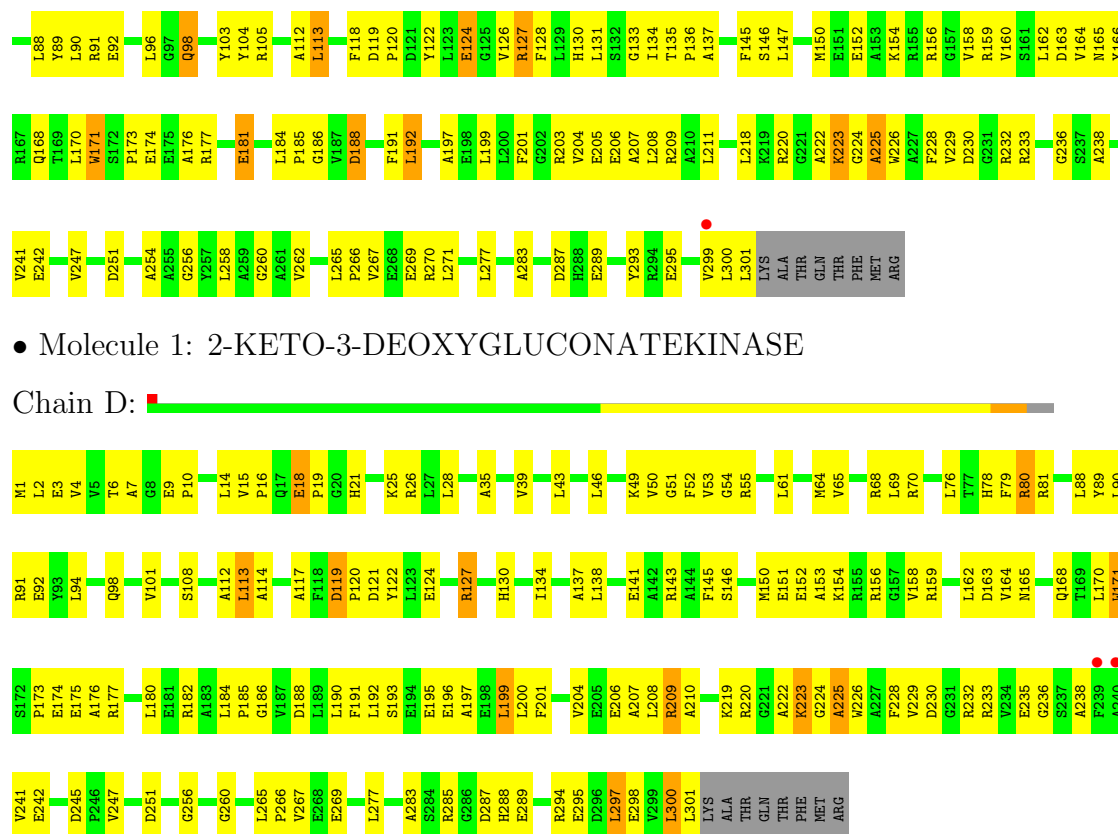
Chain B:



#### • Molecule 1: 2-KETO-3-DEOXYGLUCONATEKINASE

Chain C:





## 4 Data and refinement statistics

Property	Value	Source
Space group	P 63	Depositor
Cell constants a, b, c, $\alpha$ , $\beta$ , $\gamma$	84.72Å 84.72Å 321.61Å 90.00° 90.00° 120.00°	Depositor
Resolution (Å)	29.46 – 2.60 48.37 – 2.59	Depositor EDS
% Data completeness (in resolution range)	85.1 (29.46-2.60) 90.9 (48.37-2.59)	Depositor EDS
$R_{merge}$	0.08	Depositor
$R_{sym}$	(Not available)	Depositor
$\langle I/\sigma(I) \rangle$ <sup>1</sup>	2.62 (at 2.58Å)	Xtriage
Refinement program	CNS 1.1	Depositor
R, $R_{free}$	0.178 , 0.266 0.187 , (Not available)	Depositor DCC
$R_{free}$ test set	No test flags present.	DCC
Wilson B-factor (Å <sup>2</sup> )	36.1	Xtriage
Anisotropy	0.015	Xtriage
Bulk solvent $k_{sol}$ (e/Å <sup>3</sup> ), $B_{sol}$ (Å <sup>2</sup> )	0.34 , 41.7	EDS
Estimated twinning fraction	0.467 for h,-h-k,-l	Xtriage
L-test for twinning	$\langle  L  \rangle = 0.42$ , $\langle L^2 \rangle = 0.25$	Xtriage
Outliers	0 of 36917 reflections	Xtriage
$F_o, F_c$ correlation	0.93	EDS
Total number of atoms	9373	wwPDB-VP
Average B, all atoms (Å <sup>2</sup> )	48.0	wwPDB-VP

Xtriage's analysis on translational NCS is as follows: *The analyses of the Patterson function reveals a significant off-origin peak that is 27.85 % of the origin peak, indicating pseudo translational symmetry. The chance of finding a peak of this or larger height randomly in a structure without pseudo translational symmetry is equal to 2.0448e-03.*

<sup>1</sup>Intensities estimated from amplitudes.

## 5 Model quality

### 5.1 Standard geometry

Bond lengths and bond angles in the following residue types are not validated in this section: ATP

The Z score for a bond length (or angle) is the number of standard deviations the observed value is removed from the expected value. A bond length (or angle) with  $|Z| > 5$  is considered an outlier worth inspection. RMSZ is the root-mean-square of all Z scores of the bond lengths (or angles).

Mol	Chain	Bond lengths		Bond angles	
		RMSZ	$\# Z  > 5$	RMSZ	$\# Z  > 5$
1	A	0.34	0/2337	0.58	0/3168
1	B	0.34	0/2337	0.58	0/3168
1	C	0.34	0/2337	0.58	0/3168
1	D	0.35	0/2337	0.58	1/3168 (0.0%)
All	All	0.34	0/9348	0.58	1/12672 (0.0%)

There are no bond length outliers.

All (1) bond angle outliers are listed below:

Mol	Chain	Res	Type	Atoms	Z	Observed(°)	Ideal(°)
1	D	300	LEU	CA-C-O	5.46	131.58	120.10

There are no chirality outliers.

There are no planarity outliers.

### 5.2 Close contacts

In the following table, the Non-H and H(model) columns list the number of non-hydrogen atoms and hydrogen atoms in the chain respectively. The H(added) column lists the number of hydrogens added by MolProbity. The Clashes column lists the number of clashes within the asymmetric unit, and the number in parentheses is this value normalized per 1000 atoms of the molecule in the chain. The Symm-Clashes column gives symmetry related clashes, in the same way as for the Clashes column.

Mol	Chain	Non-H	H(model)	H(added)	Clashes	Symm-Clashes
1	A	2289	0	2287	161	0
1	B	2289	0	2287	158	0
1	C	2289	0	2287	152	0
1	D	2289	0	2287	129	0

*Continued on next page...*



*Continued from previous page...*

Mol	Chain	Non-H	H(model)	H(added)	Clashes	Symm-Clashes
2	A	31	0	12	1	0
2	B	31	0	12	1	0
2	C	31	0	12	1	0
2	D	31	0	12	1	0
3	A	28	0	0	3	0
3	B	30	0	0	1	0
3	C	16	0	0	4	0
3	D	19	0	0	3	0
All	All	9373	0	9196	583	0

Clashscore is defined as the number of clashes calculated for the entry per 1000 atoms (including hydrogens) of the entry. The overall clashscore for this entry is 32.

All (583) close contacts within the same asymmetric unit are listed below.

Atom-1	Atom-2	Distance(Å)	Clash(Å)
1:A:22:LEU:HD13	1:A:92:GLU:HB2	1.40	1.01
1:C:220:ARG:HH11	1:C:226:TRP:HE1	1.08	1.00
1:D:297:LEU:O	1:D:301:LEU:N	1.96	0.98
1:C:192:LEU:HD11	1:C:197:ALA:HB2	1.43	0.98
1:B:152:GLU:HG3	1:B:156:ARG:HE	1.31	0.94
1:B:176:ALA:O	1:B:180:LEU:HG	1.68	0.93
1:B:46:LEU:HD22	1:B:297:LEU:HD11	1.52	0.91
1:B:120:PRO:HB3	1:B:152:GLU:HG2	1.53	0.89
1:C:260:GLY:HA2	1:C:265:LEU:HD12	1.56	0.87
1:A:209:ARG:HA	1:A:209:ARG:CZ	2.05	0.86
1:C:91:ARG:HD2	1:C:247:VAL:HG21	1.58	0.85
1:D:164:VAL:HG21	1:D:192:LEU:HD13	1.58	0.85
1:C:22:LEU:HD13	1:C:92:GLU:HB2	1.61	0.82
1:A:152:GLU:HG3	1:A:156:ARG:HH21	1.44	0.81
1:D:285:ARG:HH21	1:D:285:ARG:HG3	1.43	0.81
1:A:267:VAL:HA	1:A:270:ARG:HE	1.47	0.79
1:A:267:VAL:HG22	1:A:270:ARG:HH21	1.46	0.79
1:D:70:ARG:HB2	1:D:70:ARG:HH11	1.46	0.79
1:B:295:GLU:HA	1:B:298:GLU:CD	2.03	0.77
1:B:163:ASP:OD1	1:B:165:ASN:HB2	1.85	0.77
1:D:46:LEU:HD22	1:D:297:LEU:HD11	1.67	0.76
1:C:76:LEU:HB3	1:C:79:PHE:HB3	1.65	0.76
1:A:267:VAL:HG22	1:A:270:ARG:NH2	2.00	0.76
1:A:6:THR:OG1	1:A:36:GLU:HB3	1.86	0.75
1:C:220:ARG:HH21	1:C:223:LYS:NZ	1.83	0.75
1:C:12:VAL:HG21	1:C:61:LEU:HD13	1.68	0.75
1:A:27:LEU:O	1:A:28:LEU:HD23	1.87	0.75

*Continued on next page...*

*Continued from previous page...*

Atom-1	Atom-2	Distance(Å)	Clash(Å)
1:C:147:LEU:HA	1:C:150:MET:HE3	1.69	0.74
1:D:15:VAL:HG21	1:D:91:ARG:CZ	2.18	0.74
1:C:98:GLN:CD	1:C:98:GLN:H	1.90	0.74
1:B:15:VAL:HG21	1:B:91:ARG:NH2	2.03	0.74
1:B:35:ALA:HA	1:B:251:ASP:OD1	1.87	0.73
1:D:209:ARG:HA	1:D:209:ARG:HE	1.53	0.73
1:C:206:GLU:HB3	3:C:2011:HOH:O	1.86	0.73
1:A:56:VAL:HG23	1:A:81:ARG:HG3	1.71	0.73
1:D:204:VAL:O	1:D:208:LEU:HG	1.88	0.72
1:C:63:ALA:O	1:C:67:GLU:HG2	1.90	0.72
1:D:173:PRO:O	1:D:177:ARG:HG3	1.89	0.71
1:B:91:ARG:HD2	1:B:247:VAL:HG21	1.72	0.71
1:B:89:TYR:HE2	1:B:91:ARG:HD3	1.54	0.71
1:D:267:VAL:HG23	3:D:2014:HOH:O	1.90	0.71
1:C:130:HIS:O	1:C:131:LEU:HD23	1.91	0.71
1:A:57:GLY:O	1:A:81:ARG:HG2	1.91	0.70
1:D:137:ALA:HB3	1:D:170:LEU:HD13	1.74	0.70
1:A:26:ARG:N	1:A:26:ARG:HD2	2.06	0.69
1:D:295:GLU:HA	1:D:298:GLU:CD	2.11	0.69
1:C:89:TYR:C	1:C:90:LEU:HD12	2.12	0.69
1:B:209:ARG:HA	1:B:209:ARG:NE	2.08	0.69
1:A:137:ALA:HB2	1:A:171:TRP:CE2	2.28	0.69
1:C:63:ALA:HB2	1:C:81:ARG:NH1	2.07	0.69
1:D:127:ARG:HH11	1:D:127:ARG:HG3	1.56	0.69
1:C:254:ALA:O	1:C:258:LEU:HG	1.92	0.69
1:A:22:LEU:HD13	1:A:92:GLU:CB	2.19	0.68
1:A:230:ASP:C	1:A:232:ARG:H	1.96	0.68
1:C:230:ASP:C	1:C:232:ARG:H	1.96	0.68
1:A:277:LEU:HD23	1:A:292:PRO:HD2	1.74	0.68
1:D:230:ASP:C	1:D:232:ARG:H	1.95	0.68
1:A:22:LEU:HD11	1:A:91:ARG:O	1.93	0.67
1:D:1:MET:HE2	1:D:2:LEU:O	1.95	0.67
1:B:230:ASP:C	1:B:232:ARG:H	1.95	0.67
1:A:226:TRP:CD1	1:A:235:GLU:HG3	2.28	0.67
1:A:123:LEU:HB2	1:A:156:ARG:HD2	1.76	0.67
1:C:166:TYR:HE2	1:C:176:ALA:HB2	1.59	0.67
1:B:76:LEU:HD22	1:B:79:PHE:CD2	2.30	0.67
1:A:25:LYS:C	1:A:26:ARG:HD2	2.14	0.67
1:C:267:VAL:HG22	1:C:270:ARG:HH21	1.58	0.67
1:A:63:ALA:HB2	1:A:81:ARG:HH11	1.60	0.67
1:C:150:MET:O	1:C:154:LYS:HG3	1.95	0.66
1:D:70:ARG:CB	1:D:70:ARG:HH11	2.08	0.66

*Continued on next page...*

*Continued from previous page...*

Atom-1	Atom-2	Distance(Å)	Clash(Å)
1:B:137:ALA:HB3	1:B:170:LEU:HD13	1.76	0.66
1:B:256:GLY:CA	1:B:277:LEU:HD22	2.26	0.66
1:A:195:GLU:HG2	1:A:199:LEU:HD11	1.77	0.66
1:A:17:GLN:HE21	1:A:17:GLN:HA	1.61	0.66
1:B:233:ARG:O	1:B:233:ARG:HD3	1.96	0.66
1:C:203:ARG:O	3:C:2011:HOH:O	2.13	0.65
1:B:209:ARG:HA	1:B:209:ARG:HE	1.61	0.65
1:A:63:ALA:HB2	1:A:81:ARG:NH1	2.10	0.65
1:C:137:ALA:HB2	1:C:171:TRP:CE2	2.32	0.65
1:B:29:GLU:HB3	1:B:31:TYR:CE2	2.31	0.65
1:A:68:ARG:HH11	1:A:72:GLU:HG2	1.61	0.65
1:A:93:TYR:OH	1:A:247:VAL:HG23	1.97	0.65
1:A:88:LEU:C	1:A:88:LEU:HD12	2.17	0.65
1:D:150:MET:O	1:D:154:LYS:HG3	1.97	0.64
1:A:16:PRO:HB3	1:A:25:LYS:HG3	1.79	0.64
1:A:228:PHE:CE1	1:A:233:ARG:HG3	2.32	0.64
1:C:15:VAL:HG21	1:C:91:ARG:NH2	2.12	0.64
1:C:166:TYR:CE2	1:C:176:ALA:HB2	2.32	0.64
1:D:134:ILE:HG23	1:D:170:LEU:HD11	1.80	0.64
1:A:294:ARG:HG2	3:A:2028:HOH:O	1.98	0.64
1:B:45:ARG:NH2	1:B:68:ARG:NH2	2.46	0.63
1:A:277:LEU:CD2	1:A:292:PRO:HD2	2.29	0.63
1:B:5:VAL:O	1:B:129:LEU:HD12	1.97	0.63
1:A:36:GLU:OE1	1:A:132:SER:HB3	1.97	0.63
1:C:134:ILE:HD11	1:C:165:ASN:ND2	2.13	0.63
1:D:176:ALA:O	1:D:180:LEU:HG	1.99	0.63
1:D:120:PRO:HB3	1:D:152:GLU:HG2	1.80	0.63
1:B:89:TYR:CE2	1:B:91:ARG:HD3	2.33	0.63
1:A:295:GLU:O	1:A:299:VAL:HG23	1.97	0.63
1:A:241:VAL:HG21	1:A:283:ALA:HB2	1.81	0.63
1:A:35:ALA:O	1:A:39:VAL:HG23	1.97	0.63
1:A:76:LEU:HB3	1:A:79:PHE:HB3	1.81	0.63
1:C:54:GLY:C	1:C:55:ARG:HD2	2.20	0.63
1:B:294:ARG:O	1:B:298:GLU:HG3	1.99	0.62
1:B:189:LEU:HD13	1:B:215:GLU:OE1	2.00	0.62
1:B:220:ARG:NH1	1:B:223:LYS:HB3	2.13	0.62
1:C:295:GLU:O	1:C:299:VAL:HG23	2.00	0.62
1:C:54:GLY:O	1:C:55:ARG:HD2	1.99	0.62
1:D:241:VAL:HG21	1:D:283:ALA:HB2	1.82	0.62
1:A:15:VAL:HG21	1:A:91:ARG:NH2	2.15	0.62
1:C:152:GLU:O	1:C:156:ARG:HD2	1.99	0.62
1:A:300:LEU:HG	1:A:301:LEU:N	2.15	0.62

*Continued on next page...*

*Continued from previous page...*

Atom-1	Atom-2	Distance(Å)	Clash(Å)
1:B:285:ARG:HB2	1:B:285:ARG:HH21	1.63	0.62
1:D:300:LEU:C	1:D:300:LEU:HD23	2.19	0.62
1:D:186:GLY:HA3	3:D:2008:HOH:O	1.99	0.62
1:B:14:LEU:HB2	1:B:90:LEU:HD23	1.81	0.61
1:D:300:LEU:O	1:D:300:LEU:HD23	2.00	0.61
1:A:174:GLU:HG3	1:A:177:ARG:NH2	2.15	0.61
1:D:171:TRP:NE1	1:D:176:ALA:HB2	2.15	0.61
1:D:88:LEU:C	1:D:88:LEU:HD12	2.21	0.61
1:C:91:ARG:CD	1:C:247:VAL:HG21	2.30	0.61
1:A:192:LEU:HD21	1:A:197:ALA:HB2	1.81	0.61
1:B:241:VAL:HG21	1:B:283:ALA:HB2	1.82	0.60
1:D:16:PRO:HB3	1:D:25:LYS:HG3	1.83	0.60
1:D:55:ARG:HH11	1:D:80:ARG:NH2	2.00	0.60
1:B:14:LEU:HD12	1:B:90:LEU:CD2	2.30	0.60
1:A:195:GLU:O	1:A:199:LEU:HG	2.00	0.60
1:B:173:PRO:O	1:B:177:ARG:HG3	2.01	0.60
1:D:124:GLU:HG2	1:D:156:ARG:HD2	1.83	0.60
1:C:220:ARG:HH21	1:C:223:LYS:CE	2.14	0.60
1:C:80:ARG:HG2	1:C:81:ARG:N	2.16	0.60
1:C:16:PRO:HB3	1:C:25:LYS:HG3	1.84	0.60
1:C:88:LEU:C	1:C:88:LEU:HD12	2.22	0.60
1:B:245:ASP:OD1	1:B:285:ARG:HG3	2.02	0.60
1:D:14:LEU:HB2	1:D:90:LEU:HD23	1.84	0.60
1:C:192:LEU:CD1	1:C:197:ALA:HB2	2.26	0.59
1:B:137:ALA:HB1	1:B:170:LEU:HB3	1.84	0.59
1:B:45:ARG:HH22	1:B:68:ARG:NH2	2.01	0.59
1:C:33:GLY:HA3	1:C:287:ASP:OD2	2.02	0.59
1:D:89:TYR:HE2	1:D:91:ARG:HG3	1.67	0.59
1:C:3:GLU:HG3	1:C:49:LYS:HB2	1.84	0.59
1:C:90:LEU:N	1:C:90:LEU:HD12	2.18	0.59
1:D:260:GLY:HA2	1:D:265:LEU:HD12	1.85	0.59
1:C:201:PHE:CZ	1:C:211:LEU:HD21	2.38	0.59
1:D:76:LEU:HB3	1:D:79:PHE:HB3	1.84	0.58
1:A:15:VAL:O	1:A:29:GLU:HG3	2.02	0.58
1:B:195:GLU:OE1	1:B:199:LEU:HD12	2.03	0.58
1:C:120:PRO:HB3	1:C:152:GLU:CG	2.34	0.58
1:A:226:TRP:HE3	1:A:228:PHE:HZ	1.51	0.58
1:A:91:ARG:NH1	1:A:247:VAL:HG11	2.19	0.57
1:C:220:ARG:NH2	1:C:223:LYS:HD2	2.19	0.57
1:A:222:ALA:C	1:A:224:GLY:H	2.08	0.57
1:A:28:LEU:O	1:B:27:LEU:HD23	2.04	0.57
1:D:137:ALA:HB1	1:D:170:LEU:HB3	1.86	0.57

*Continued on next page...*

*Continued from previous page...*

Atom-1	Atom-2	Distance(Å)	Clash(Å)
1:A:267:VAL:CG2	1:A:270:ARG:HH21	2.18	0.57
1:A:37:VAL:HG13	1:A:69:LEU:HD21	1.86	0.57
1:C:58:GLU:HA	1:C:81:ARG:HE	1.69	0.57
1:A:60:GLU:CD	1:B:23:ARG:HH21	2.08	0.57
1:B:219:LYS:HG2	1:B:253:PHE:CE2	2.40	0.57
1:A:141:GLU:N	1:A:141:GLU:OE1	2.38	0.57
1:D:222:ALA:C	1:D:224:GLY:H	2.08	0.57
1:A:164:VAL:HG23	1:A:191:PHE:O	2.03	0.57
1:C:56:VAL:HA	3:C:2003:HOH:O	2.05	0.57
1:A:61:LEU:O	1:A:65:VAL:HG23	2.04	0.57
1:B:222:ALA:C	1:B:224:GLY:H	2.08	0.57
1:B:46:LEU:HD21	1:B:297:LEU:HD21	1.87	0.56
1:A:89:TYR:C	1:A:90:LEU:HD12	2.26	0.56
1:A:192:LEU:O	1:A:218:LEU:HD12	2.05	0.56
1:D:54:GLY:O	1:D:55:ARG:HD2	2.06	0.56
1:B:91:ARG:HG3	1:B:101:VAL:HG22	1.86	0.56
1:C:241:VAL:HG21	1:C:283:ALA:HB2	1.88	0.56
1:C:220:ARG:HE	1:C:223:LYS:HE3	1.70	0.56
1:A:137:ALA:HB1	1:A:170:LEU:HB3	1.87	0.56
1:A:163:ASP:HA	1:A:191:PHE:HB2	1.88	0.56
1:D:127:ARG:NH1	1:D:127:ARG:HG3	2.21	0.56
1:D:199:LEU:C	1:D:200:LEU:HD12	2.26	0.56
1:B:150:MET:HB2	1:B:160:VAL:HG21	1.88	0.55
1:C:222:ALA:C	1:C:224:GLY:H	2.10	0.55
1:D:285:ARG:HH21	1:D:285:ARG:CG	2.15	0.55
1:C:299:VAL:O	1:C:301:LEU:N	2.39	0.55
1:A:300:LEU:CG	1:A:301:LEU:N	2.69	0.55
1:C:220:ARG:NH1	1:C:226:TRP:HE1	1.92	0.55
1:A:168:GLN:CD	1:A:168:GLN:H	2.09	0.55
1:A:209:ARG:HA	1:A:209:ARG:NE	2.22	0.55
1:D:266:PRO:HD2	1:D:269:GLU:OE2	2.06	0.55
1:D:141:GLU:OE2	1:D:141:GLU:N	2.39	0.55
1:B:153:ALA:HB1	1:B:158:VAL:HB	1.88	0.55
1:A:267:VAL:HG13	1:A:270:ARG:HH21	1.72	0.54
1:C:154:LYS:CE	1:C:186:GLY:HA2	2.38	0.54
1:A:25:LYS:HD2	3:A:2002:HOH:O	2.07	0.54
1:A:241:VAL:HG22	1:A:242:GLU:N	2.22	0.54
1:D:55:ARG:HH11	1:D:80:ARG:CZ	2.20	0.54
1:B:7:ALA:HB2	1:B:53:VAL:HB	1.88	0.54
1:B:273:LEU:O	1:B:277:LEU:HD13	2.08	0.54
1:D:184:LEU:HB3	1:D:185:PRO:HD3	1.88	0.54
1:A:91:ARG:CD	1:A:247:VAL:HG21	2.36	0.54

*Continued on next page...*

*Continued from previous page...*

Atom-1	Atom-2	Distance(Å)	Clash(Å)
1:C:22:LEU:HD13	1:C:92:GLU:CB	2.36	0.54
1:D:70:ARG:CB	1:D:70:ARG:NH1	2.70	0.54
1:B:80:ARG:HG2	1:B:81:ARG:N	2.22	0.54
1:A:174:GLU:OE2	1:A:177:ARG:NH2	2.40	0.54
1:D:228:PHE:CE1	1:D:233:ARG:HG2	2.42	0.54
1:C:160:VAL:H	1:C:188:ASP:CG	2.11	0.54
1:C:154:LYS:HE2	1:C:186:GLY:HA2	1.90	0.54
1:A:252:ALA:HB2	1:A:281:VAL:HG21	1.89	0.54
1:B:295:GLU:O	1:B:299:VAL:HG23	2.07	0.54
1:C:137:ALA:HB1	1:C:170:LEU:HB3	1.90	0.54
1:B:14:LEU:HD12	1:B:90:LEU:HD21	1.90	0.54
1:D:196:GLU:O	1:D:200:LEU:HD13	2.08	0.54
1:D:94:LEU:HB2	1:D:98:GLN:O	2.08	0.54
1:A:92:GLU:OE2	1:B:60:GLU:HG3	2.08	0.54
1:B:184:LEU:HD21	1:B:211:LEU:HA	1.90	0.54
1:A:23:ARG:NH1	1:B:63:ALA:HB1	2.22	0.54
1:C:69:LEU:HB3	1:C:76:LEU:HD21	1.90	0.53
1:D:220:ARG:NH1	1:D:223:LYS:HE3	2.24	0.53
1:A:203:ARG:NH1	1:A:203:ARG:HB2	2.23	0.53
1:A:134:ILE:HG23	1:A:170:LEU:HD11	1.90	0.53
1:A:204:VAL:O	1:A:208:LEU:HG	2.08	0.53
1:D:55:ARG:NH2	1:D:78:HIS:O	2.42	0.53
1:B:61:LEU:O	1:B:65:VAL:HG23	2.09	0.53
1:A:60:GLU:HB3	1:B:22:LEU:HB3	1.91	0.53
1:A:131:LEU:O	1:A:162:LEU:HD12	2.09	0.53
1:A:134:ILE:O	1:A:138:LEU:HG	2.09	0.53
1:D:69:LEU:HB3	1:D:76:LEU:HD21	1.91	0.53
1:C:204:VAL:O	1:C:208:LEU:HG	2.09	0.53
1:B:7:ALA:O	1:B:36:GLU:HG2	2.09	0.53
1:A:135:THR:HB	1:A:136:PRO:CD	2.39	0.53
1:C:58:GLU:C	1:C:81:ARG:HH21	2.13	0.52
1:B:151:GLU:OE1	1:B:152:GLU:N	2.42	0.52
1:A:104:TYR:OH	1:B:61:LEU:HD12	2.09	0.52
1:C:56:VAL:HG23	1:C:81:ARG:HG2	1.91	0.52
1:A:184:LEU:HB3	1:A:185:PRO:HD3	1.91	0.52
1:C:163:ASP:HA	1:C:191:PHE:HB2	1.91	0.52
1:D:7:ALA:HB2	1:D:53:VAL:HB	1.91	0.52
1:C:135:THR:HB	1:C:136:PRO:CD	2.40	0.52
1:C:18:GLU:HB2	1:C:19:PRO:CD	2.40	0.52
1:A:232:ARG:NH2	1:A:267:VAL:HG21	2.25	0.52
1:C:12:VAL:HG21	1:C:61:LEU:HB3	1.91	0.52
1:A:56:VAL:CG2	1:A:81:ARG:HG3	2.39	0.52

*Continued on next page...*

*Continued from previous page...*

Atom-1	Atom-2	Distance(Å)	Clash(Å)
1:D:153:ALA:HB1	1:D:158:VAL:HB	1.92	0.52
1:C:127:ARG:HG3	1:C:127:ARG:HH11	1.75	0.52
1:A:294:ARG:NH2	3:A:2028:HOH:O	2.42	0.52
1:C:224:GLY:HA3	1:C:236:GLY:O	2.10	0.52
1:C:3:GLU:O	1:C:127:ARG:HB2	2.10	0.52
1:A:141:GLU:CD	1:A:141:GLU:H	2.13	0.52
1:C:124:GLU:HA	1:C:124:GLU:OE2	2.10	0.52
1:B:224:GLY:HA3	1:B:236:GLY:O	2.10	0.52
1:C:168:GLN:OE1	1:C:199:LEU:HD11	2.10	0.51
1:B:117:ALA:HB3	1:B:145:PHE:CE1	2.45	0.51
1:B:204:VAL:CG1	1:B:218:LEU:HD21	2.40	0.51
1:C:174:GLU:CD	1:C:174:GLU:N	2.63	0.51
1:A:258:LEU:O	1:A:262:VAL:HG23	2.10	0.51
1:D:164:VAL:HG23	1:D:190:LEU:HD11	1.93	0.51
1:B:294:ARG:HG2	1:B:294:ARG:HH11	1.75	0.51
1:D:61:LEU:O	1:D:65:VAL:HG23	2.10	0.51
1:D:294:ARG:O	1:D:298:GLU:HG3	2.10	0.51
1:B:284:SER:OG	1:B:290:GLY:HA3	2.11	0.51
1:D:195:GLU:N	1:D:195:GLU:OE1	2.37	0.51
1:B:88:LEU:HD12	1:B:104:TYR:HB2	1.92	0.51
1:A:152:GLU:HG3	1:A:156:ARG:NH2	2.20	0.51
1:C:30:VAL:HG22	1:D:28:LEU:HD12	1.93	0.51
1:C:226:TRP:HE3	1:C:228:PHE:HZ	1.59	0.50
1:B:177:ARG:NE	1:B:200:LEU:O	2.38	0.50
1:C:256:GLY:CA	1:C:277:LEU:HD22	2.41	0.50
1:B:27:LEU:O	1:B:28:LEU:HD23	2.10	0.50
1:C:230:ASP:C	1:C:232:ARG:N	2.64	0.50
1:A:41:VAL:O	1:A:45:ARG:HG3	2.11	0.50
1:B:201:PHE:CZ	1:B:211:LEU:HD21	2.46	0.50
1:C:96:LEU:HB2	1:C:98:GLN:OE1	2.11	0.50
1:D:235:GLU:HG3	1:D:236:GLY:N	2.27	0.50
1:A:43:LEU:HD22	1:A:48:VAL:HG11	1.94	0.50
1:B:289:GLU:HA	1:B:289:GLU:OE2	2.11	0.50
1:B:184:LEU:HB3	1:B:185:PRO:HD3	1.93	0.50
1:B:39:VAL:O	1:B:43:LEU:HG	2.11	0.50
1:D:154:LYS:HD2	1:D:186:GLY:O	2.12	0.50
1:A:192:LEU:O	1:A:218:LEU:HA	2.12	0.50
1:B:92:GLU:OE1	1:B:94:LEU:HD21	2.12	0.50
1:A:224:GLY:HA3	1:A:236:GLY:O	2.12	0.49
1:A:192:LEU:CD1	1:A:196:GLU:HB2	2.42	0.49
1:B:117:ALA:HB3	1:B:145:PHE:HE1	1.77	0.49
1:B:120:PRO:HB3	1:B:152:GLU:CG	2.36	0.49

*Continued on next page...*



*Continued from previous page...*

Atom-1	Atom-2	Distance(Å)	Clash(Å)
1:D:177:ARG:HA	1:D:180:LEU:HD12	1.93	0.49
1:B:91:ARG:NH1	1:B:287:ASP:OD1	2.44	0.49
1:D:80:ARG:HG2	1:D:81:ARG:N	2.27	0.49
1:B:88:LEU:C	1:B:88:LEU:HD12	2.32	0.49
1:A:54:GLY:O	1:A:55:ARG:HD2	2.13	0.49
1:A:153:ALA:HB1	1:A:158:VAL:HB	1.94	0.49
1:C:220:ARG:HH21	1:C:223:LYS:HZ2	1.56	0.49
1:B:256:GLY:HA2	1:B:277:LEU:HD22	1.94	0.49
1:B:258:LEU:O	1:B:262:VAL:HG23	2.12	0.49
1:B:159:ARG:CG	1:B:159:ARG:HH11	2.25	0.49
1:B:299:VAL:O	1:B:301:LEU:N	2.46	0.49
1:D:224:GLY:HA3	1:D:236:GLY:O	2.13	0.49
1:B:267:VAL:HG23	3:B:2026:HOH:O	2.13	0.49
1:A:58:GLU:HG3	1:A:82:ALA:O	2.13	0.49
1:C:266:PRO:HD2	1:C:269:GLU:OE2	2.12	0.49
1:D:143:ARG:HH21	1:D:182:ARG:NH1	2.11	0.49
1:A:25:LYS:O	1:A:26:ARG:NH1	2.46	0.49
1:B:76:LEU:HB3	1:B:79:PHE:HB3	1.95	0.49
1:A:90:LEU:HD12	1:A:90:LEU:N	2.28	0.49
1:A:60:GLU:CB	1:B:22:LEU:HB3	2.42	0.49
1:A:130:HIS:O	1:A:131:LEU:HD23	2.13	0.49
1:D:89:TYR:HD2	1:D:101:VAL:HG13	1.78	0.49
1:B:295:GLU:HA	1:B:298:GLU:OE2	2.12	0.48
1:A:120:PRO:HB3	1:A:152:GLU:CG	2.43	0.48
1:C:61:LEU:O	1:C:65:VAL:HG23	2.13	0.48
1:C:146:SER:O	1:C:150:MET:HG3	2.13	0.48
1:A:134:ILE:HG12	1:A:167:ARG:HD3	1.94	0.48
1:C:43:LEU:HD22	1:C:48:VAL:HG21	1.94	0.48
1:A:60:GLU:OE2	1:B:23:ARG:NH2	2.42	0.48
1:C:177:ARG:O	1:C:181:GLU:HB2	2.13	0.48
1:C:37:VAL:HG13	1:C:69:LEU:HD21	1.94	0.48
1:B:15:VAL:HG12	1:B:16:PRO:HD2	1.93	0.48
1:C:134:ILE:HD11	1:C:165:ASN:CG	2.34	0.48
1:D:220:ARG:HD2	1:D:226:TRP:CD1	2.48	0.48
1:C:174:GLU:HA	1:C:177:ARG:NH1	2.28	0.48
1:B:265:LEU:O	1:B:270:ARG:NE	2.47	0.48
1:C:112:ALA:O	1:C:113:LEU:C	2.52	0.48
1:D:285:ARG:HG3	1:D:285:ARG:NH2	2.20	0.48
1:A:137:ALA:HB3	1:A:170:LEU:HD13	1.95	0.48
1:B:230:ASP:C	1:B:232:ARG:N	2.64	0.48
1:C:207:ALA:N	3:C:2011:HOH:O	2.36	0.48
1:C:131:LEU:O	1:C:162:LEU:HD12	2.13	0.48

*Continued on next page...*



*Continued from previous page...*

Atom-1	Atom-2	Distance(Å)	Clash(Å)
1:B:8:GLY:HA3	1:B:36:GLU:CD	2.34	0.48
1:D:112:ALA:O	1:D:113:LEU:C	2.52	0.48
1:D:230:ASP:C	1:D:232:ARG:N	2.64	0.48
1:C:104:TYR:OH	1:D:61:LEU:HD12	2.13	0.48
1:A:54:GLY:C	1:A:55:ARG:HD2	2.34	0.48
1:C:4:VAL:O	1:C:50:VAL:HA	2.14	0.48
1:A:60:GLU:HB2	1:B:22:LEU:HD23	1.96	0.48
1:C:30:VAL:CG2	1:D:28:LEU:HD12	2.44	0.48
1:D:164:VAL:HG21	1:D:192:LEU:CD1	2.36	0.48
1:A:120:PRO:HB3	1:A:152:GLU:HG2	1.96	0.48
1:A:195:GLU:HG2	1:A:199:LEU:CD1	2.43	0.48
1:D:228:PHE:CD1	1:D:233:ARG:HG2	2.49	0.48
1:D:89:TYR:CE2	1:D:91:ARG:HG3	2.46	0.47
1:A:201:PHE:HB2	1:A:207:ALA:HB2	1.95	0.47
1:A:69:LEU:HB3	1:A:76:LEU:HD21	1.96	0.47
1:B:17:GLN:HG2	1:B:29:GLU:OE2	2.15	0.47
1:B:177:ARG:O	1:B:181:GLU:HB2	2.15	0.47
1:C:118:PHE:HE1	1:C:122:TYR:HB3	1.79	0.47
1:A:206:GLU:OE2	1:A:210:ALA:HB2	2.15	0.47
1:D:163:ASP:HA	1:D:191:PHE:HB2	1.96	0.47
1:B:112:ALA:O	1:B:113:LEU:C	2.53	0.47
1:B:189:LEU:HG	1:B:191:PHE:CE1	2.49	0.47
1:C:98:GLN:N	1:C:98:GLN:CD	2.65	0.47
1:B:285:ARG:CB	1:B:285:ARG:NH2	2.78	0.47
1:C:135:THR:HB	1:C:136:PRO:HD3	1.97	0.47
1:A:7:ALA:HB2	1:A:53:VAL:HB	1.97	0.47
1:C:56:VAL:HG23	1:C:81:ARG:HA	1.95	0.47
1:B:56:VAL:HG23	1:B:81:ARG:HG2	1.96	0.47
1:A:140:PRO:HB2	1:A:141:GLU:OE1	2.15	0.47
1:D:21:HIS:HA	1:D:92:GLU:OE2	2.14	0.47
1:B:21:HIS:HA	1:B:92:GLU:OE1	2.15	0.47
1:A:42:ALA:O	1:A:46:LEU:HG	2.14	0.47
1:A:60:GLU:OE2	1:B:23:ARG:NE	2.43	0.47
1:A:36:GLU:H	1:A:36:GLU:CD	2.18	0.47
1:C:177:ARG:HG2	1:C:181:GLU:OE1	2.15	0.47
1:C:82:ALA:HB1	1:C:83:PRO:HD2	1.97	0.47
1:D:134:ILE:HD11	1:D:165:ASN:ND2	2.30	0.47
1:D:1:MET:O	1:D:49:LYS:HD3	2.14	0.47
1:C:241:VAL:HG22	1:C:242:GLU:N	2.29	0.47
1:D:4:VAL:O	1:D:50:VAL:HA	2.15	0.47
1:A:256:GLY:CA	1:A:277:LEU:HD12	2.45	0.46
1:C:18:GLU:HB2	1:C:19:PRO:HD2	1.95	0.46

*Continued on next page...*

*Continued from previous page...*

Atom-1	Atom-2	Distance(Å)	Clash(Å)
1:A:230:ASP:C	1:A:232:ARG:N	2.64	0.46
1:B:56:VAL:HG13	1:B:79:PHE:HE1	1.80	0.46
1:C:156:ARG:HG2	1:C:156:ARG:HH11	1.80	0.46
1:C:299:VAL:C	1:C:301:LEU:N	2.68	0.46
1:A:112:ALA:O	1:A:113:LEU:C	2.53	0.46
1:D:3:GLU:O	1:D:127:ARG:HB2	2.15	0.46
1:C:119:ASP:O	1:C:122:TYR:HB2	2.15	0.46
1:A:192:LEU:HD12	1:A:196:GLU:OE2	2.15	0.46
1:A:18:GLU:HB2	1:A:19:PRO:CD	2.45	0.46
1:B:41:VAL:O	1:B:45:ARG:HG3	2.16	0.46
1:D:120:PRO:C	1:D:122:TYR:H	2.19	0.46
1:D:241:VAL:HG22	1:D:242:GLU:N	2.30	0.46
1:C:7:ALA:HB2	1:C:53:VAL:HB	1.96	0.46
1:C:226:TRP:HE3	1:C:228:PHE:CZ	2.32	0.46
1:C:91:ARG:NH1	1:C:247:VAL:HB	2.30	0.46
1:B:133:GLY:HA3	1:B:164:VAL:O	2.16	0.46
1:D:146:SER:O	1:D:150:MET:HG2	2.16	0.46
1:D:143:ARG:HH21	1:D:182:ARG:CZ	2.28	0.46
1:C:184:LEU:HB3	1:C:185:PRO:HD3	1.97	0.46
1:C:90:LEU:CD1	1:C:90:LEU:N	2.79	0.46
1:B:9:GLU:HG3	1:B:110:GLY:HA3	1.98	0.46
1:D:193:SER:HB3	1:D:219:LYS:HZ2	1.81	0.46
1:D:6:THR:HG23	1:D:52:PHE:HD1	1.81	0.46
1:B:163:ASP:HA	1:B:191:PHE:HB2	1.97	0.46
1:C:128:PHE:CD2	1:C:159:ARG:HB2	2.51	0.46
1:C:22:LEU:HD11	1:C:91:ARG:O	2.15	0.46
1:B:164:VAL:CG2	1:B:190:LEU:HD11	2.45	0.46
1:D:171:TRP:CZ2	1:D:176:ALA:HA	2.51	0.46
1:D:117:ALA:HB3	1:D:145:PHE:CE1	2.51	0.46
1:C:23:ARG:HA	1:D:64:MET:HE2	1.96	0.46
1:A:152:GLU:HA	1:A:152:GLU:OE1	2.14	0.46
1:B:167:ARG:HG3	1:B:170:LEU:HD12	1.97	0.46
1:B:45:ARG:HD3	1:B:293:TYR:CE1	2.51	0.46
1:C:133:GLY:HA3	1:C:164:VAL:O	2.16	0.46
1:D:220:ARG:HH12	1:D:223:LYS:HD2	1.80	0.45
1:C:199:LEU:HD23	1:C:199:LEU:O	2.16	0.45
1:D:114:ALA:O	1:D:145:PHE:HD1	1.99	0.45
1:D:201:PHE:HB2	1:D:207:ALA:HB2	1.98	0.45
1:A:192:LEU:HD12	1:A:193:SER:H	1.80	0.45
1:B:10:PRO:HG3	1:B:52:PHE:CZ	2.51	0.45
1:B:18:GLU:HB2	1:B:19:PRO:CD	2.46	0.45
1:A:4:VAL:O	1:A:50:VAL:HA	2.15	0.45

*Continued on next page...*

*Continued from previous page...*

Atom-1	Atom-2	Distance(Å)	Clash(Å)
1:C:201:PHE:HB2	1:C:207:ALA:HB2	1.98	0.45
1:B:285:ARG:HB2	1:B:285:ARG:NH2	2.29	0.45
1:B:128:PHE:CD2	1:B:159:ARG:HB2	2.51	0.45
1:B:4:VAL:O	1:B:50:VAL:HA	2.16	0.45
1:A:253:PHE:CD1	1:A:274:ALA:HB1	2.51	0.45
1:B:256:GLY:HA3	1:B:277:LEU:HD22	1.98	0.45
1:A:94:LEU:HB2	1:A:98:GLN:O	2.17	0.45
1:A:120:PRO:C	1:A:122:TYR:H	2.20	0.45
1:C:120:PRO:C	1:C:122:TYR:H	2.20	0.45
1:C:188:ASP:N	1:C:188:ASP:OD1	2.50	0.45
1:A:78:HIS:CG	1:A:118:PHE:HB2	2.51	0.45
1:C:12:VAL:CG2	1:C:61:LEU:HD13	2.43	0.45
1:D:91:ARG:HH21	1:D:245:ASP:CG	2.20	0.45
1:D:78:HIS:NE2	1:D:119:ASP:HB3	2.32	0.45
1:D:228:PHE:HE1	1:D:233:ARG:NH1	2.14	0.45
1:A:209:ARG:NH2	1:A:212:SER:OG	2.50	0.45
1:D:193:SER:HB3	1:D:219:LYS:NZ	2.32	0.45
1:B:204:VAL:HG11	1:B:218:LEU:HD21	1.99	0.44
1:B:26:ARG:HG3	1:B:26:ARG:HH11	1.83	0.44
1:A:14:LEU:HD12	1:A:90:LEU:CD1	2.47	0.44
1:A:238:ALA:HB1	2:A:1301:ATP:C2	2.53	0.44
1:C:26:ARG:HD2	1:C:26:ARG:N	2.32	0.44
1:A:53:VAL:HG11	1:A:118:PHE:CD2	2.52	0.44
1:B:224:GLY:O	1:B:225:ALA:HB2	2.16	0.44
1:A:232:ARG:NH2	1:A:267:VAL:CG2	2.80	0.44
1:D:138:LEU:HD23	1:D:170:LEU:HD22	1.98	0.44
1:C:145:PHE:CD2	1:C:146:SER:N	2.86	0.44
1:D:21:HIS:CD2	1:D:94:LEU:HD21	2.52	0.44
1:B:88:LEU:CD1	1:B:104:TYR:HB2	2.47	0.44
1:D:256:GLY:HA3	1:D:277:LEU:HD13	1.98	0.44
1:C:258:LEU:O	1:C:262:VAL:HG23	2.17	0.44
1:A:88:LEU:HD12	1:A:89:TYR:N	2.32	0.44
1:A:135:THR:HB	1:A:136:PRO:HD3	1.99	0.44
1:B:114:ALA:O	1:B:145:PHE:HD1	2.01	0.44
1:D:238:ALA:HB1	2:D:1301:ATP:C2	2.53	0.44
1:D:289:GLU:OE2	1:D:289:GLU:HA	2.16	0.44
1:D:295:GLU:HA	1:D:298:GLU:OE2	2.17	0.44
1:B:120:PRO:C	1:B:122:TYR:H	2.21	0.44
1:B:192:LEU:O	1:B:218:LEU:HA	2.18	0.44
1:B:159:ARG:HA	1:B:188:ASP:OD1	2.18	0.44
1:B:26:ARG:HG3	1:B:26:ARG:NH1	2.32	0.44
1:D:50:VAL:HG22	1:D:51:GLY:N	2.33	0.44

*Continued on next page...*

*Continued from previous page...*

Atom-1	Atom-2	Distance(Å)	Clash(Å)
1:B:164:VAL:HG23	1:B:190:LEU:HD11	2.00	0.44
1:A:228:PHE:CD1	1:A:233:ARG:HG3	2.53	0.44
1:A:224:GLY:O	1:A:225:ALA:HB2	2.18	0.44
1:A:78:HIS:HD2	1:A:122:TYR:CD1	2.36	0.43
1:B:53:VAL:HG11	1:B:118:PHE:CD2	2.52	0.43
1:C:238:ALA:HB1	2:C:1301:ATP:C2	2.53	0.43
1:D:26:ARG:HH11	1:D:26:ARG:HG3	1.82	0.43
1:D:15:VAL:HG22	1:D:91:ARG:HB2	1.98	0.43
1:C:174:GLU:HA	1:C:177:ARG:HH12	1.82	0.43
1:B:266:PRO:O	1:B:270:ARG:HG3	2.18	0.43
1:B:34:GLY:O	1:B:37:VAL:HB	2.18	0.43
1:B:58:GLU:HG3	1:B:82:ALA:O	2.19	0.43
1:B:241:VAL:HG22	1:B:242:GLU:N	2.33	0.43
1:B:252:ALA:HB2	1:B:281:VAL:HG21	2.00	0.43
1:C:56:VAL:HG23	1:C:81:ARG:CG	2.48	0.43
1:B:69:LEU:HB3	1:B:76:LEU:HD21	2.01	0.43
1:B:174:GLU:HA	1:B:177:ARG:NH1	2.32	0.43
1:C:118:PHE:CE1	1:C:122:TYR:HB3	2.53	0.43
1:A:192:LEU:HD11	1:A:196:GLU:HB2	2.00	0.43
1:A:133:GLY:HA3	1:A:164:VAL:O	2.18	0.43
1:A:203:ARG:HB2	1:A:203:ARG:CZ	2.47	0.43
1:C:192:LEU:O	1:C:218:LEU:HA	2.19	0.43
1:B:15:VAL:CG1	1:B:16:PRO:HD2	2.48	0.43
1:B:192:LEU:HD12	1:B:193:SER:H	1.83	0.43
1:C:26:ARG:N	1:C:26:ARG:CD	2.81	0.43
1:A:252:ALA:CB	1:A:281:VAL:HG21	2.49	0.43
1:B:267:VAL:HG22	1:B:270:ARG:HH12	1.82	0.43
1:D:209:ARG:HA	1:D:209:ARG:NE	2.27	0.43
1:C:119:ASP:C	1:C:119:ASP:OD1	2.56	0.43
1:B:241:VAL:CG2	1:B:283:ALA:HB2	2.47	0.43
1:A:23:ARG:CZ	1:B:63:ALA:HB1	2.49	0.43
1:B:46:LEU:HA	1:B:46:LEU:HD23	1.81	0.43
1:C:63:ALA:HB2	1:C:81:ARG:HH11	1.81	0.43
1:B:233:ARG:O	1:B:233:ARG:CD	2.65	0.43
1:B:46:LEU:CD2	1:B:297:LEU:HD21	2.48	0.43
1:B:164:VAL:HG23	1:B:191:PHE:O	2.19	0.43
1:C:55:ARG:NH1	1:C:78:HIS:O	2.52	0.43
1:A:177:ARG:O	1:A:181:GLU:HB2	2.19	0.43
1:A:10:PRO:HA	1:A:37:VAL:HG21	2.01	0.42
1:B:220:ARG:HD2	1:B:226:TRP:CD2	2.54	0.42
1:D:121:ASP:O	1:D:124:GLU:HG3	2.19	0.42
1:B:126:VAL:O	1:B:158:VAL:HG13	2.19	0.42

*Continued on next page...*

*Continued from previous page...*

Atom-1	Atom-2	Distance(Å)	Clash(Å)
1:C:82:ALA:HB1	1:C:83:PRO:CD	2.49	0.42
1:B:152:GLU:CG	1:B:156:ARG:HE	2.17	0.42
1:A:138:LEU:HD23	1:A:170:LEU:HD22	2.01	0.42
1:D:224:GLY:O	1:D:225:ALA:HB2	2.19	0.42
1:D:266:PRO:HD2	1:D:269:GLU:CD	2.39	0.42
1:D:206:GLU:OE2	1:D:210:ALA:HB2	2.18	0.42
1:A:89:TYR:HD2	1:A:101:VAL:HG13	1.85	0.42
1:D:130:HIS:HE1	1:D:163:ASP:HB2	1.84	0.42
1:C:126:VAL:O	1:C:158:VAL:HG22	2.19	0.42
1:D:247:VAL:HG13	3:D:2018:HOH:O	2.19	0.42
1:A:194:GLU:HG3	1:A:220:ARG:HA	2.01	0.42
1:C:174:GLU:CD	1:C:174:GLU:H	2.20	0.42
1:B:180:LEU:O	1:B:184:LEU:HB2	2.19	0.42
1:D:15:VAL:CG2	1:D:91:ARG:CZ	2.94	0.42
1:C:124:GLU:CD	1:C:156:ARG:NH1	2.73	0.42
1:C:224:GLY:O	1:C:225:ALA:HB2	2.19	0.42
1:B:238:ALA:HB1	2:B:1301:ATP:C2	2.54	0.42
1:C:31:TYR:CE1	1:C:289:GLU:HG3	2.54	0.42
1:B:218:LEU:HD23	1:B:226:TRP:CE3	2.55	0.42
1:D:9:GLU:OE2	1:D:108:SER:OG	2.33	0.42
1:A:53:VAL:HG11	1:A:118:PHE:HD2	1.84	0.42
1:A:241:VAL:HG22	1:A:242:GLU:H	1.84	0.42
1:B:245:ASP:HA	1:B:246:PRO:HD2	1.83	0.42
1:A:217:VAL:HG21	1:A:257:TYR:CE2	2.55	0.42
1:C:98:GLN:N	1:C:98:GLN:NE2	2.67	0.42
1:C:166:TYR:OH	1:C:173:PRO:N	2.52	0.42
1:C:171:TRP:N	1:C:171:TRP:CD1	2.88	0.42
1:A:128:PHE:HZ	1:A:261:ALA:HB1	1.85	0.42
1:A:91:ARG:HD3	1:A:247:VAL:HG21	2.02	0.42
1:A:27:LEU:HD23	1:B:28:LEU:O	2.19	0.42
1:B:192:LEU:HD12	1:B:196:GLU:OE2	2.20	0.42
1:C:236:GLY:HA3	1:C:271:LEU:HD13	2.01	0.42
1:B:29:GLU:HG2	1:B:31:TYR:OH	2.19	0.41
1:D:300:LEU:CD2	1:D:300:LEU:C	2.87	0.41
1:A:192:LEU:HD12	1:A:193:SER:N	2.35	0.41
1:D:200:LEU:HD12	1:D:200:LEU:N	2.34	0.41
1:C:96:LEU:CB	1:C:98:GLN:OE1	2.67	0.41
1:C:3:GLU:OE1	1:C:262:VAL:CG1	2.68	0.41
1:B:134:ILE:HG23	1:B:170:LEU:HD11	2.01	0.41
1:D:143:ARG:NH2	1:D:182:ARG:CZ	2.83	0.41
1:C:300:LEU:HD12	1:C:300:LEU:HA	1.71	0.41
1:D:294:ARG:O	1:D:297:LEU:HG	2.20	0.41

*Continued on next page...*

*Continued from previous page...*

Atom-1	Atom-2	Distance(Å)	Clash(Å)
1:B:152:GLU:O	1:B:156:ARG:HD2	2.20	0.41
1:C:78:HIS:CG	1:C:118:PHE:HB2	2.56	0.41
1:B:233:ARG:CB	1:C:233:ARG:HD2	2.51	0.41
1:B:201:PHE:HB2	1:B:207:ALA:HB2	2.02	0.41
1:B:16:PRO:HB3	1:B:25:LYS:HG3	2.01	0.41
1:B:123:LEU:HA	1:B:126:VAL:HG21	2.01	0.41
1:A:143:ARG:NH2	1:A:179:PHE:HB2	2.35	0.41
1:A:197:ALA:HB1	1:A:207:ALA:CB	2.50	0.41
1:A:106:LYS:HD3	1:A:106:LYS:C	2.41	0.41
1:D:162:LEU:O	1:D:190:LEU:HD12	2.21	0.41
1:B:277:LEU:N	1:B:277:LEU:CD1	2.83	0.41
1:D:39:VAL:O	1:D:43:LEU:HG	2.21	0.41
1:C:120:PRO:HB3	1:C:152:GLU:HG2	2.01	0.41
1:C:156:ARG:HG2	1:C:156:ARG:NH1	2.35	0.41
1:D:54:GLY:C	1:D:55:ARG:HD2	2.40	0.41
1:D:18:GLU:HB2	1:D:19:PRO:CD	2.51	0.41
1:A:268:GLU:N	1:A:268:GLU:OE1	2.52	0.41
1:A:141:GLU:N	1:A:141:GLU:CD	2.73	0.41
1:A:164:VAL:HG22	1:A:190:LEU:HD11	2.02	0.41
1:B:159:ARG:CG	1:B:159:ARG:NH1	2.82	0.41
1:C:220:ARG:NE	1:C:223:LYS:HE3	2.34	0.41
1:A:53:VAL:HG22	1:A:78:HIS:HB2	2.03	0.41
1:A:56:VAL:HG23	1:A:81:ARG:CG	2.47	0.41
1:A:233:ARG:NH2	1:A:235:GLU:OE1	2.52	0.41
1:C:103:TYR:CE2	1:C:105:ARG:NH1	2.89	0.41
1:C:256:GLY:N	1:C:277:LEU:HD22	2.36	0.41
1:A:58:GLU:HG3	1:A:82:ALA:C	2.41	0.41
1:C:4:VAL:O	1:C:50:VAL:HG23	2.20	0.41
1:B:135:THR:HB	1:B:136:PRO:CD	2.51	0.41
1:C:228:PHE:CE1	1:C:233:ARG:HB3	2.56	0.41
1:D:171:TRP:HB2	1:D:175:GLU:OE2	2.21	0.41
1:D:10:PRO:HG3	1:D:52:PHE:CZ	2.56	0.41
1:B:155:ARG:HG3	1:B:155:ARG:O	2.21	0.41
1:D:46:LEU:HD11	1:D:277:LEU:HD21	2.02	0.40
1:C:295:GLU:H	1:C:295:GLU:HG2	1.62	0.40
1:C:293:TYR:CD1	1:C:293:TYR:N	2.89	0.40
1:B:294:ARG:HG2	1:B:294:ARG:NH1	2.34	0.40
1:B:220:ARG:HD2	1:B:226:TRP:CE2	2.56	0.40
1:B:9:GLU:HA	1:B:10:PRO:HD3	1.92	0.40
1:D:168:GLN:HB3	1:D:168:GLN:HE21	1.67	0.40
1:D:35:ALA:HB1	1:D:251:ASP:OD2	2.21	0.40
1:D:68:ARG:NH1	1:D:288:HIS:NE2	2.69	0.40

*Continued on next page...*

*Continued from previous page...*

Atom-1	Atom-2	Distance(Å)	Clash(Å)
1:C:98:GLN:NE2	1:C:98:GLN:H	2.19	0.40
1:C:166:TYR:CE2	1:C:176:ALA:CB	3.02	0.40
1:D:197:ALA:HB1	1:D:207:ALA:CB	2.52	0.40
1:A:268:GLU:N	1:A:268:GLU:CD	2.75	0.40
1:D:159:ARG:HG2	1:D:159:ARG:H	1.47	0.40
1:A:46:LEU:HD11	1:A:277:LEU:HD11	2.03	0.40
1:B:230:ASP:O	1:B:232:ARG:N	2.55	0.40
1:A:222:ALA:C	1:A:224:GLY:N	2.73	0.40
1:C:226:TRP:N	1:C:226:TRP:CD1	2.88	0.40
1:C:105:ARG:NH2	1:C:170:LEU:HD21	2.35	0.40

There are no symmetry-related clashes.

## 5.3 Torsion angles

### 5.3.1 Protein backbone ⓘ

In the following table, the Percentiles column shows the percent Ramachandran outliers of the chain as a percentile score with respect to all X-ray entries followed by that with respect to entries of similar resolution. The Analysed column shows the number of residues for which the backbone conformation was analysed, and the total number of residues.

Mol	Chain	Analysed	Favoured	Allowed	Outliers	Percentiles	
1	A	299/309 (97%)	276 (92%)	19 (6%)	4 (1%)	18	35
1	B	299/309 (97%)	276 (92%)	19 (6%)	4 (1%)	18	35
1	C	299/309 (97%)	273 (91%)	22 (7%)	4 (1%)	18	35
1	D	299/309 (97%)	277 (93%)	18 (6%)	4 (1%)	18	35
All	All	1196/1236 (97%)	1102 (92%)	78 (6%)	16 (1%)	18	35

All (16) Ramachandran outliers are listed below:

Mol	Chain	Res	Type
1	A	113	LEU
1	C	113	LEU
1	D	113	LEU
1	B	113	LEU
1	A	223	LYS
1	A	225	ALA
1	B	223	LYS
1	B	225	ALA

*Continued on next page...*

*Continued from previous page...*

Mol	Chain	Res	Type
1	C	223	LYS
1	C	225	ALA
1	D	223	LYS
1	D	225	ALA
1	A	229	VAL
1	D	229	VAL
1	B	229	VAL
1	C	229	VAL

### 5.3.2 Protein sidechains ⓘ

In the following table, the Percentiles column shows the percent sidechain outliers of the chain as a percentile score with respect to all X-ray entries followed by that with respect to entries of similar resolution. The Analysed column shows the number of residues for which the sidechain conformation was analysed, and the total number of residues.

Mol	Chain	Analysed	Rotameric	Outliers	Percentiles	
1	A	223/231 (96%)	205 (92%)	18 (8%)	17	32
1	B	223/231 (96%)	209 (94%)	14 (6%)	25	49
1	C	223/231 (96%)	207 (93%)	16 (7%)	21	39
1	D	223/231 (96%)	211 (95%)	12 (5%)	31	57
All	All	892/924 (96%)	832 (93%)	60 (7%)	23	44

All (60) residues with a non-rotameric sidechain are listed below:

Mol	Chain	Res	Type
1	A	17	GLN
1	A	18	GLU
1	A	22	LEU
1	A	26	ARG
1	A	100	ARG
1	A	141	GLU
1	A	165	ASN
1	A	168	GLN
1	A	169	THR
1	A	171	TRP
1	A	181	GLU
1	A	182	ARG
1	A	188	ASP
1	A	204	VAL

*Continued on next page...*



*Continued from previous page...*

Mol	Chain	Res	Type
1	A	205	GLU
1	A	209	ARG
1	A	230	ASP
1	A	267	VAL
1	B	18	GLU
1	B	27	LEU
1	B	29	GLU
1	B	90	LEU
1	B	98	GLN
1	B	151	GLU
1	B	159	ARG
1	B	169	THR
1	B	171	TRP
1	B	195	GLU
1	B	199	LEU
1	B	233	ARG
1	B	287	ASP
1	B	297	LEU
1	C	17	GLN
1	C	26	ARG
1	C	32	VAL
1	C	68	ARG
1	C	70	ARG
1	C	80	ARG
1	C	98	GLN
1	C	124	GLU
1	C	127	ARG
1	C	171	TRP
1	C	181	GLU
1	C	188	ASP
1	C	192	LEU
1	C	205	GLU
1	C	209	ARG
1	C	251	ASP
1	D	18	GLU
1	D	80	ARG
1	D	119	ASP
1	D	127	ARG
1	D	151	GLU
1	D	171	TRP
1	D	174	GLU
1	D	188	ASP

*Continued on next page...*

*Continued from previous page...*

Mol	Chain	Res	Type
1	D	199	LEU
1	D	209	ARG
1	D	287	ASP
1	D	297	LEU

Some sidechains can be flipped to improve hydrogen bonding and reduce clashes. All (8) such sidechains are listed below:

Mol	Chain	Res	Type
1	A	17	GLN
1	A	78	HIS
1	A	168	GLN
1	B	98	GLN
1	B	288	HIS
1	C	17	GLN
1	D	130	HIS
1	D	168	GLN

### 5.3.3 RNA ⓘ

There are no RNA chains in this entry.

## 5.4 Non-standard residues in protein, DNA, RNA chains ⓘ

There are no non-standard protein/DNA/RNA residues in this entry.

## 5.5 Carbohydrates ⓘ

There are no carbohydrates in this entry.

## 5.6 Ligand geometry ⓘ

4 ligands are modelled in this entry.

In the following table, the Counts columns list the number of bonds (or angles) for which Mogul statistics could be retrieved, the number of bonds (or angles) that are observed in the model and the number of bonds (or angles) that are defined in the chemical component dictionary. The Link column lists molecule types, if any, to which the group is linked. The Z score for a bond length (or angle) is the number of standard deviations the observed value is removed from the expected value. A bond length (or angle) with  $|Z| > 2$  is considered an outlier worth inspection. RMSZ is the root-mean-square of all Z scores of the bond lengths (or angles).

Mol	Type	Chain	Res	Link	Bond lengths			Bond angles		
					Counts	RMSZ	# Z  > 2	Counts	RMSZ	# Z  > 2
2	ATP	A	1301	-	33,33,33	1.90	9 (27%)	52,52,52	1.90	11 (21%)
2	ATP	B	1301	-	33,33,33	1.92	9 (27%)	52,52,52	1.90	11 (21%)
2	ATP	C	1301	-	33,33,33	1.92	10 (30%)	52,52,52	1.90	11 (21%)
2	ATP	D	1301	-	33,33,33	1.88	8 (24%)	52,52,52	1.90	11 (21%)

In the following table, the Chirals column lists the number of chiral outliers, the number of chiral centers analysed, the number of these observed in the model and the number defined in the chemical component dictionary. Similar counts are reported in the Torsion and Rings columns. '-' means no outliers of that kind were identified.

Mol	Type	Chain	Res	Link	Chirals	Torsions	Rings
2	ATP	A	1301	-	-	0/22/38/38	0/1/3/3
2	ATP	B	1301	-	-	0/22/38/38	0/1/3/3
2	ATP	C	1301	-	-	0/22/38/38	0/1/3/3
2	ATP	D	1301	-	-	0/22/38/38	0/1/3/3

All (36) bond length outliers are listed below:

Mol	Chain	Res	Type	Atoms	Z	Observed(Å)	Ideal(Å)
2	D	1301	ATP	C4-N3	5.19	1.43	1.35
2	C	1301	ATP	C4-N3	5.10	1.43	1.35
2	B	1301	ATP	C4-N3	5.09	1.43	1.35
2	A	1301	ATP	C4-N3	5.04	1.43	1.35
2	B	1301	ATP	O4'-C1'	4.24	1.47	1.41
2	C	1301	ATP	O4'-C1'	4.20	1.47	1.41
2	B	1301	ATP	O5'-C5'	-4.11	1.27	1.44
2	D	1301	ATP	O5'-C5'	-4.10	1.27	1.44
2	A	1301	ATP	O4'-C1'	4.09	1.47	1.41
2	C	1301	ATP	O5'-C5'	-4.08	1.27	1.44
2	A	1301	ATP	O5'-C5'	-4.08	1.27	1.44
2	D	1301	ATP	O4'-C1'	3.64	1.46	1.41
2	A	1301	ATP	C8-N9	3.14	1.41	1.36
2	C	1301	ATP	C8-N9	3.13	1.41	1.36
2	D	1301	ATP	C8-N9	3.10	1.41	1.36
2	B	1301	ATP	C8-N9	3.10	1.41	1.36
2	C	1301	ATP	C2'-C1'	2.61	1.57	1.53
2	B	1301	ATP	C2'-C1'	2.59	1.57	1.53
2	A	1301	ATP	C2'-C1'	2.48	1.57	1.53
2	D	1301	ATP	C2'-C1'	2.44	1.56	1.53
2	C	1301	ATP	PB-O1B	-2.23	1.42	1.51
2	D	1301	ATP	PA-O5'	-2.22	1.49	1.59

*Continued on next page...*

*Continued from previous page...*

Mol	Chain	Res	Type	Atoms	Z	Observed(Å)	Ideal(Å)
2	D	1301	ATP	PB-O1B	-2.18	1.43	1.51
2	B	1301	ATP	PA-O5'	-2.17	1.49	1.59
2	B	1301	ATP	PB-O2B	-2.16	1.45	1.55
2	A	1301	ATP	PB-O1B	-2.16	1.43	1.51
2	A	1301	ATP	PA-O5'	-2.14	1.49	1.59
2	B	1301	ATP	PB-O1B	-2.14	1.43	1.51
2	C	1301	ATP	PA-O5'	-2.12	1.49	1.59
2	A	1301	ATP	PB-O2B	-2.09	1.45	1.55
2	D	1301	ATP	PB-O2B	-2.08	1.45	1.55
2	C	1301	ATP	C8-N7	-2.06	1.30	1.34
2	C	1301	ATP	PG-O3G	-2.04	1.47	1.54
2	C	1301	ATP	PB-O2B	-2.00	1.46	1.55
2	A	1301	ATP	C8-N7	-2.00	1.30	1.34
2	B	1301	ATP	C8-N7	-2.00	1.30	1.34

All (44) bond angle outliers are listed below:

Mol	Chain	Res	Type	Atoms	Z	Observed(°)	Ideal(°)
2	B	1301	ATP	PB-O3B-PG	-6.25	113.37	131.68
2	C	1301	ATP	PB-O3B-PG	-6.24	113.38	131.68
2	D	1301	ATP	PB-O3B-PG	-6.22	113.43	131.68
2	A	1301	ATP	PB-O3B-PG	-6.20	113.50	131.68
2	B	1301	ATP	PA-O3A-PB	-5.68	115.03	131.68
2	A	1301	ATP	PA-O3A-PB	-5.68	115.03	131.68
2	C	1301	ATP	PA-O3A-PB	-5.67	115.05	131.68
2	D	1301	ATP	PA-O3A-PB	-5.67	115.05	131.68
2	C	1301	ATP	C5'-C4'-C3'	-4.99	95.23	115.21
2	A	1301	ATP	C5'-C4'-C3'	-4.97	95.29	115.21
2	D	1301	ATP	C5'-C4'-C3'	-4.96	95.32	115.21
2	B	1301	ATP	C5'-C4'-C3'	-4.96	95.33	115.21
2	C	1301	ATP	C3'-C2'-C1'	3.76	106.79	100.91
2	A	1301	ATP	C3'-C2'-C1'	3.74	106.76	100.91
2	D	1301	ATP	C3'-C2'-C1'	3.73	106.74	100.91
2	B	1301	ATP	C3'-C2'-C1'	3.70	106.69	100.91
2	C	1301	ATP	O4'-C4'-C3'	3.36	111.99	105.17
2	D	1301	ATP	O4'-C4'-C3'	3.35	111.96	105.17
2	B	1301	ATP	O4'-C4'-C3'	3.34	111.93	105.17
2	A	1301	ATP	O4'-C4'-C3'	3.32	111.90	105.17
2	A	1301	ATP	C4-C5-N7	3.06	112.15	109.52
2	B	1301	ATP	C4-C5-N7	3.06	112.14	109.52
2	D	1301	ATP	O3A-PB-O3B	3.04	107.85	101.66
2	B	1301	ATP	O3A-PB-O3B	3.04	107.84	101.66

*Continued on next page...*

*Continued from previous page...*

Mol	Chain	Res	Type	Atoms	Z	Observed(°)	Ideal(°)
2	C	1301	ATP	O3A-PB-O3B	3.03	107.83	101.66
2	C	1301	ATP	C4-C5-N7	3.03	112.11	109.52
2	D	1301	ATP	C4-C5-N7	2.97	112.07	109.52
2	A	1301	ATP	O3A-PB-O3B	2.97	107.70	101.66
2	A	1301	ATP	N3-C2-N1	-2.82	126.35	128.71
2	B	1301	ATP	C8-N9-C4	-2.75	104.80	106.90
2	C	1301	ATP	C8-N9-C4	-2.74	104.81	106.90
2	B	1301	ATP	N3-C2-N1	-2.74	126.42	128.71
2	D	1301	ATP	C8-N9-C4	-2.73	104.81	106.90
2	C	1301	ATP	N3-C2-N1	-2.66	126.48	128.71
2	D	1301	ATP	N3-C2-N1	-2.66	126.48	128.71
2	A	1301	ATP	C8-N9-C4	-2.64	104.88	106.90
2	D	1301	ATP	C8-N9-C1'	2.31	130.94	126.38
2	B	1301	ATP	C8-N9-C1'	2.29	130.90	126.38
2	C	1301	ATP	C8-N9-C1'	2.29	130.89	126.38
2	A	1301	ATP	C8-N9-C1'	2.27	130.85	126.38
2	B	1301	ATP	O4'-C4'-C5'	-2.08	101.94	109.36
2	A	1301	ATP	O4'-C4'-C5'	-2.06	102.01	109.36
2	D	1301	ATP	O4'-C4'-C5'	-2.05	102.03	109.36
2	C	1301	ATP	O4'-C4'-C5'	-2.01	102.17	109.36

There are no chirality outliers.

There are no torsion outliers.

There are no ring outliers.

## 5.7 Other polymers ⓘ

There are no such residues in this entry.

## 5.8 Polymer linkage issues

There are no chain breaks in this entry.

## 6 Fit of model and data

### 6.1 Protein, DNA and RNA chains

In the following table, the column labelled ‘#RSRZ> 2’ contains the number (and percentage) of RSRZ outliers, followed by percent RSRZ outliers for the chain as percentile scores relative to all X-ray entries and entries of similar resolution. The OWAB column contains the minimum, median, 95<sup>th</sup> percentile and maximum values of the occupancy-weighted average B-factor per residue. The column labelled ‘Q< 0.9’ lists the number of (and percentage) of residues with an average occupancy less than 0.9.

Mol	Chain	Analysed	<RSRZ>	#RSRZ>2	OWAB(Å <sup>2</sup> )	Q<0.9
1	A	301/309 (97%)	-0.46	1 (0%) 91 92	15, 43, 73, 103	0
1	B	301/309 (97%)	-0.37	2 (0%) 84 86	14, 46, 84, 103	0
1	C	301/309 (97%)	-0.44	1 (0%) 91 92	8, 42, 80, 106	0
1	D	301/309 (97%)	-0.40	2 (0%) 84 86	14, 43, 84, 105	0
All	All	1204/1236 (97%)	-0.42	6 (0%) 88 90	8, 43, 82, 106	0

All (6) RSRZ outliers are listed below:

Mol	Chain	Res	Type	RSRZ
1	C	299	VAL	6.9
1	A	299	VAL	6.6
1	D	240	ALA	2.7
1	D	239	PHE	2.6
1	B	299	VAL	2.1
1	B	204	VAL	2.0

### 6.2 Non-standard residues in protein, DNA, RNA chains

There are no non-standard protein/DNA/RNA residues in this entry.

### 6.3 Carbohydrates

There are no carbohydrates in this entry.

### 6.4 Ligands

In the following table, the Atoms column lists the number of modelled atoms in the group and the number defined in the chemical component dictionary. LLDF column lists the quality of electron

density of the group with respect to its neighbouring residues in protein, DNA or RNA chains. The B-factors column lists the minimum, median, 95<sup>th</sup> percentile and maximum values of B factors of atoms in the group. The column labelled 'Q< 0.9' lists the number of atoms with occupancy less than 0.9.

Mol	Type	Chain	Res	Atoms	RSR	LLDF	B-factors(Å <sup>2</sup> )	Q<0.9
2	ATP	C	1301	31/31	0.22	2.10	95,109,121,124	0
2	ATP	A	1301	31/31	0.19	1.39	85,95,119,121	0
2	ATP	B	1301	31/31	0.19	1.06	71,80,114,116	0
2	ATP	D	1301	31/31	0.17	0.40	59,71,113,114	0

## 6.5 Other polymers ⓘ

There are no such residues in this entry.